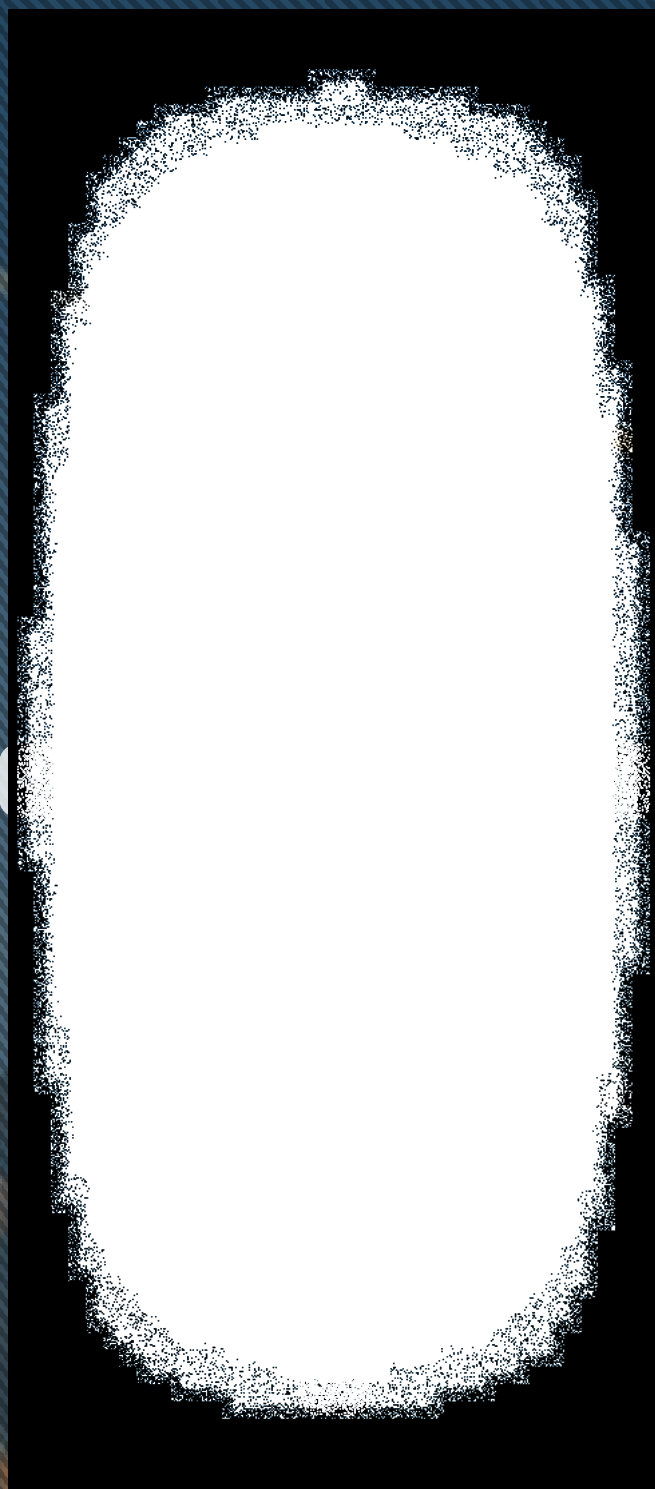


KPR



— ✦ — **NARRATIVE RULESET** — ✦ —
Ver 0.5

SOLARPUNK ADVENTURES IN A WORLD REBORN
KPRVERSE.COM



Welcome to New Eden. The year is 2093 and humanity has survived nearly a century since the cataclysmic events of the Flicker, with society rebuilt against the ever-present threat of the Vines virus and mutated Aberrants it forms.

Spanning 40,000km² of countryside underneath the protective Firewall dome, New Eden is a land of contrasts in which factions position for control over limited land and resources. Nearly three million people now live under the dome, powered by the enigmatic Keep and its unknown controllers.

You are a Keeper. Part of a growing number born with the ability to naturally manipulate Kai, a primordial source of energy discovered in 1978 that forever changed the course of history.

Being a Keeper is a difficult task, as you are both revered and persecuted by the people of New Eden. The first step is learning how to use the powers given to you as a birthright. The second is to choose a group of like-minded citizens to work with...

...and the final step is finding a way to change the world.

ENTER

In the world of KPR, the line between friend and foe is blurred and the decisions you make as a Keeper can have a lasting impact on the world. Finding your way among different factions, conflicts and events is what makes a narrative ruleset a vibrant and enjoyable experience. An opportunity to live in a world filled with danger and intrigue, faced with an uncertain future.

For those who have never played a narrative roleplaying game before, they play a bit differently to the videogames or boardgames you might be used to. You might have seen playthroughs of D&D, Shadowrun or other systems that facilitate group-based adventures. This ruleset is similar to these games, with added mechanics for a Web3 context so our community can take part in official campaigns run by the KPR team.

To enjoy your own homegames, though, you just need the rules and a group to play with to run campaigns in this exciting world that blends cyberpunk, solarpunk and post-apocalyptic genres to create something truly unique. A new world for you to explore with your friends and together decide the fate of its inhabitants.



THE NARRATOR

Storytelling in a Shared World

Roleplaying games are about telling a story together, using rules to help decide the outcomes of any actions or events that might succeed or fail. To keep gameplay flowing, the group of Players is lead by a Narrator that runs the Scenario and describes the world and the non-player characters (NPCs) within it.

Each player has a character with Ability Scores, Perks and other Skills they can use to impact the world. Whenever you want to take action, simply tell the Narrator what you want your character to say or do and they will tell you what happens next. Maybe an NPC responds to your questions; or you enter a room and learn about what's inside; or perhaps the action you are taking requires a dice roll (using 20-sided dice in this system) to determine success or failure. Think of the Narrator like a storyteller who keeps everybody on the same page, while the dice decide the outcomes of any uncertain events.

The One Rule

The one rule to consider when stating what you want to do is simple: *you only get to choose the actions of your own character.* Any outcomes, responses, events or descriptions of what happens outside of the character you control are in the hands of the Narrator; the other Players; and the fate of the Dice.

It is the Narrator's job to create a fun setting, providing challenges for the Players to overcome. The dice will help decide what happens in events like combat, or situations that can have multiple different results. By working together, choosing your own actions and responding to the prompts of the Narrator, the Players become protagonists who decide the outcome of each narrative scenario and change the course of New Eden's history.

Asynchronous Gameplay

The *KPR Narrative Ruleset* is designed to be friendly for asynchronous gameplay over the internet, such as the official scenarios on the KPR Discord server. When playing the game asynchronously, the Narrator will tag players and ask them to describe the actions of their characters; with the expectation that it might be a few hours (or more) before a reply. This enables gameplay over different timezones, as well as language barriers, but it does require players to keep on top of replies and the timings of actions (particularly when it comes to combat).

Do's & Don'ts

Whether you are playing live or asynchronously, there are a few gameplay tips to ensure scenarios run as smoothly as possible:

DO keep your action descriptions brief and focused, so that the Narrator can incorporate them easily.

DO pay attention to your Abilities, Perks and Items. There are lots of options available as a player, but you have to use them!

DO remember that this is a game and everyone is here to have fun. Respect your fellow players and lean into their storytelling.

DO let the Narrator know if you feel uncomfortable with any thematic, behavioural or language elements.

DON'T argue with the Narrator if a final decision has been made, they are the authority on gameplay and rules conflicts.

DON'T abandon an asynchronous game for more than 72hrs without notice, it will disrupt the scenario for other players.

INTRO

Setting & Tone

New Eden is a world of contrasts. The use of Kai energy means that many things previously thought impossible are now commonplace. The widespread use of artificial intelligence brings with it high degrees of efficiency and functionality, which for many within the safe zone leads to relatively abundant lifestyles. However, it is also a world that is constantly under threat. Although the New Eden Safe Zone might feel like a large area (roughly the size of Switzerland or Pennsylvania) for a small population, it is nonetheless a region that those within cannot escape.

The world beyond the Firewall Dome is harsh and unforgiving, filled with dangers that make escape unthinkable for most. This ever-present threat fuels tension and conflict both between individuals and the different factions that position for advantage. A century after the Flicker, life may feel normal on a daily basis, but everyone remains aware of just how fragile it all is. For in New Eden, peace is precious and always on the edge of collapse.

From a narrative perspective, the setting intentionally blends different genres from Solarpunk to Cyberpunk; Post-apocalyptic to Technomystical. This gives a lot of flexibility for the Narrator and Players to decide what kind of stories they want to tell. One scenario could be running missions against the KPCO corporation and its oppressive overreach; another could be defending a rural homestead from bandits (or even Aberrants); there's also scope to explore what lies outside of New Eden in the wastelands left behind after the collapse of humanity. There are many mysteries to uncover in this world; and even more factions trying to take control over them. Where you decide to take the setting is up to you, but it works best when the tensions between opposing ideals are explored as to their impact on this fragile world.



CHARACTERS

T

his ruleset is designed for running narrative scenarios set in the KPR universe in order to explore the hopes, dreams and conflicts of Keepers from across New Eden.

By following a few simple rules and mechanics, this book facilitates interactive storytelling; similar to other popular roleplaying games but using streamlined rules designed to be used in both live sessions and for asynchronous play.

You can create a Keeper for narrative scenarios as follows:

1. Choose a Keeper from your NFT collection
 - a. Select a Class and Faction;
 - b. Calculate your Ability Scores and Perks;
 - c. Post your backstory in the #new-eden channel on the KPR discord server.
2. Volunteer for one of the Scenarios when announced.
3. Reply to posts you are tagged in to advance the story.

Each scenario will involve a different group of Keepers and the choices made will have a real impact on New Eden.



ABILITIES

To participate in an official KPR scenario you will choose an active character to represent you throughout New Eden and beyond.

Creating a character is built upon these six **Ability Scores**, beginning at a base score of 10:

Intelligence (Int) *Use of logic and rationality in problem-solving.*

Wisdom (Wis) *The ability to draw upon insight and inspiration.*

Cunning (Cng) *The use of perception and guile to achieve goals.*

Strength (Str) *Physical strength, stamina and endurance.*

Dexterity (Dex) *Athletic ability, accuracy and speed.*

Charm (Cha) *Use of presence and persuasion to influence.*

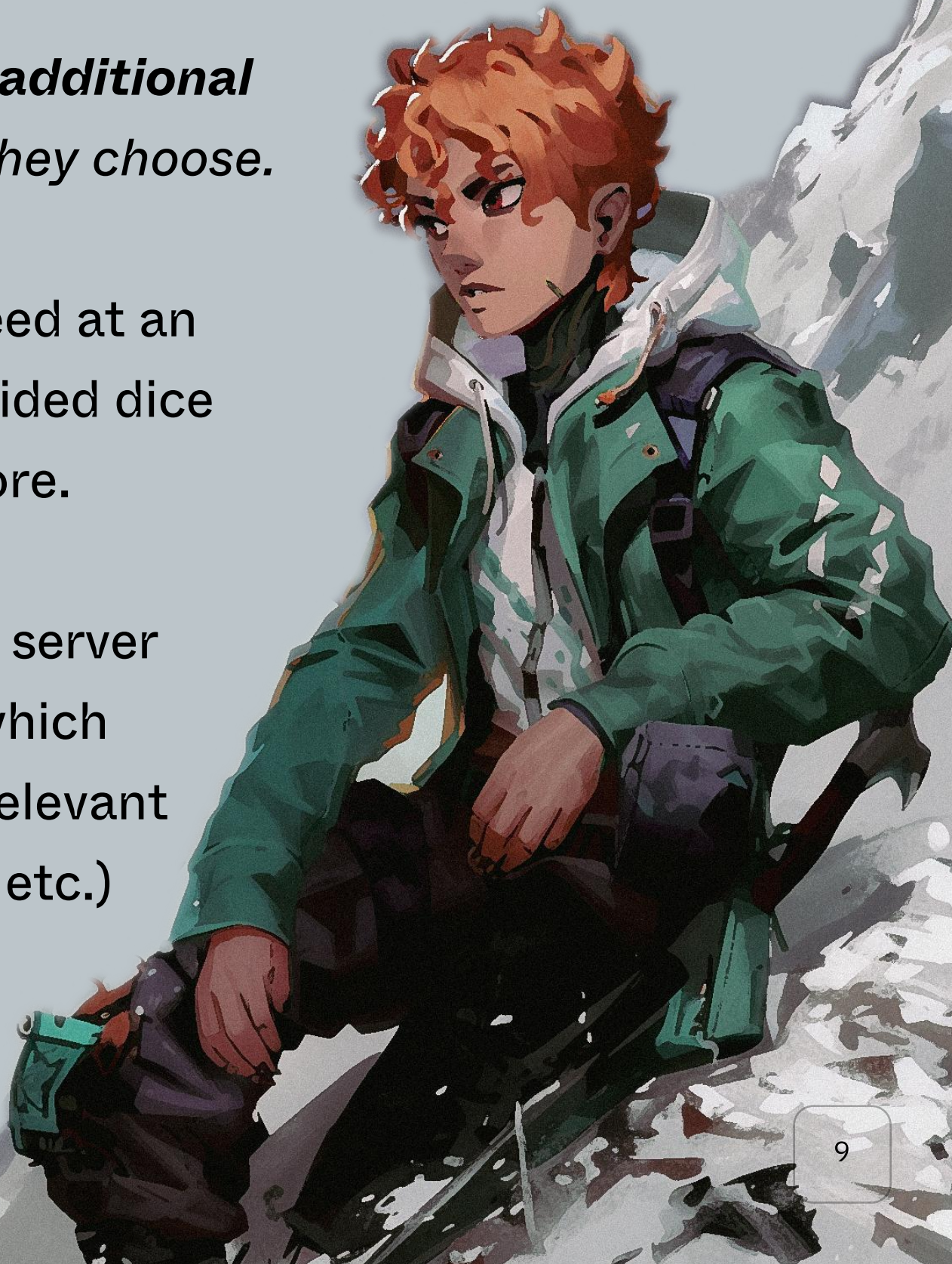
Final Ability Scores of characters are calculated as follows:

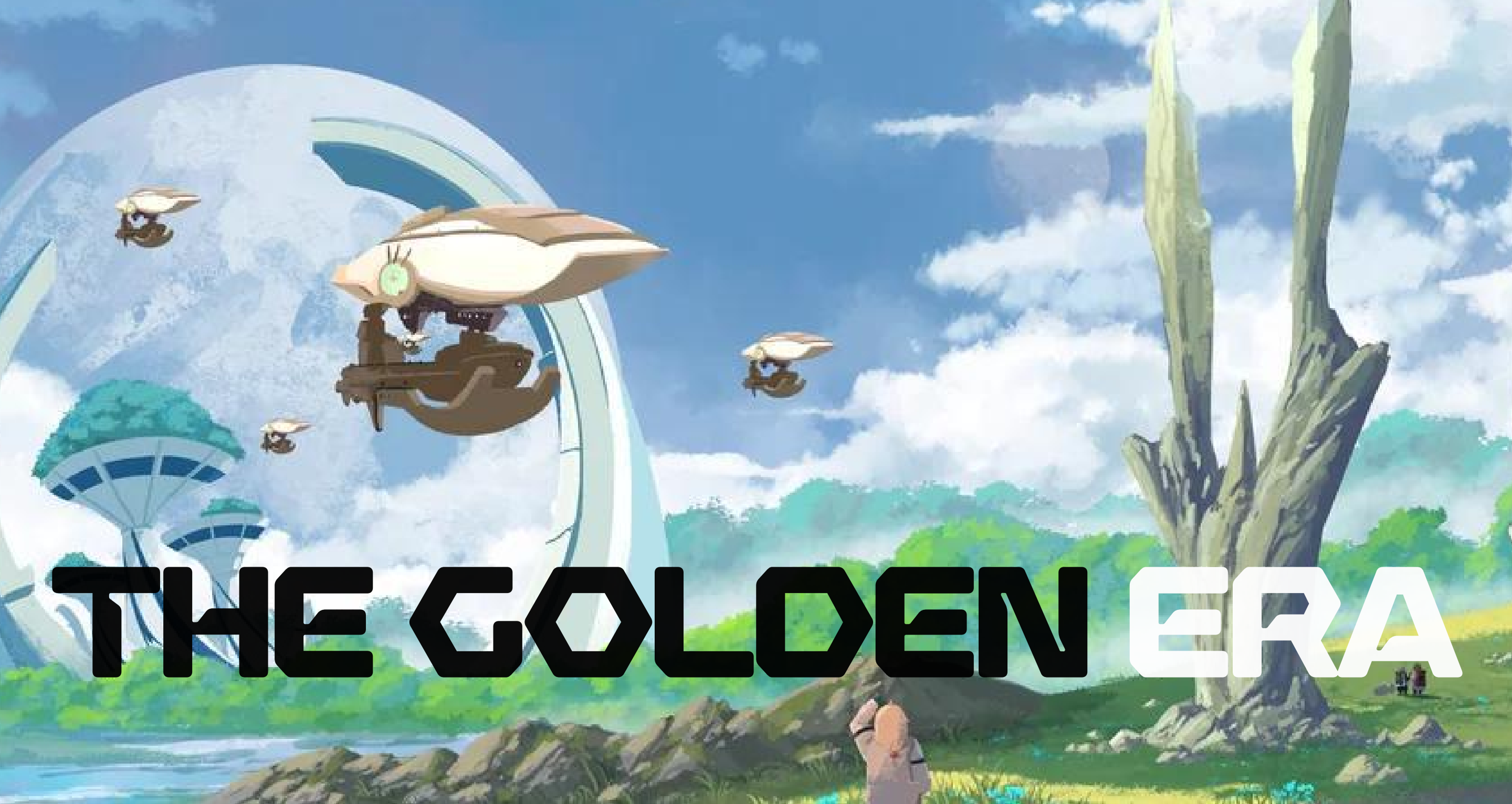
Ability Score = 10 + Class Bonus + Faction Bonus

*Each player then receives an **additional +1 bonus** to place wherever they choose.*

Using a d20 system, to succeed at an action you need to roll a 20-sided dice *under* the relevant Ability Score.

The dice-roller in the Discord server can be called by using **/roll**, which will allow you to choose the relevant number of dice (1d20 / 2d20 etc.) and give you a result.





THE GOLDEN ERA

The ruins of our past obscure the memories of what was lost and the marvels that once were, but the end of the old world was heralded as the beginning of another: the Golden Era.

Civilization progressed in parallel to our own until researchers delving into the mysteries of ambient light energy led to the discovery of Kai in 1978. An ethereal substance diffusing throughout the atmosphere, this otherworldly and seemingly infinite resource led to rapid advancements in technology and changes in societal structure.

A versatile energy source, humanity distilled Kai for a wide variety of uses, powering everything from transportation systems to cutting-edge medical devices. Kai was also an ideal, if controversial, means by which to enhance artificial intelligence; allowing deeper connections with external surroundings and granting an increased level of awareness.

Despite its rapid adoption, not everyone saw Kai as a straightforward scientific breakthrough, some even questioning whether the substance was a natural resource at all or something more mystical. Regardless of their beliefs, a minority of religious groups, scientists, and others shared concerns about the ethically questionable application of Kai in certain fields and the potential unintended consequences of manipulating a force not yet fully understood. These groups found common ground in their approach, urging caution in the face of unchecked experimentation.

Any controversies surrounding the use of Kai in artificial intelligence, biotechnologies, and other fields were, however, quickly dismissed as Kai-powered technology evolved rapidly, touching and improving nearly every aspect of daily life. Mankind had discovered a miracle and the race was on to unlock its full potential.

As the vision of a Kai-centric future became clearer, companies raced to gain an edge. Though a time of peace and abundance for most, the Golden Era upended corporate activity as the discovery led to a frenzy of acquisitions, unprecedented levels of investment in research and development, with rumours of increasingly bloody corporate espionage and worker exploitation.

With the growing recognition of Kai's significance, nations agreed to the formation of new intergovernmental organizations to oversee jointly-held regions where the collection of Kai was practicable to ensure global stability. These territories were intended to be neutral zones where countries could work together to extract Kai for the benefit of all.

However, the multinational corporations that operated in these territories and had the expertise and resources necessary to harvest, refine, experiment with, and exploit Kai quickly gained tremendous power. Companies such as the energy and infrastructure giant KPCO were allowed to self-govern without oversight, leveraging their vast resources and kickbacks as politicians and bureaucrats enjoyed a windfall.

Still, life was objectively better and improving every day for most people and the Golden Era continued largely unabated for over a decade. It seemed like nothing could stop the progress that had been set in motion, but all good things must come to an end, and the Golden Era was no exception.

It is our duty to understand the past and apply its lessons to the present, so that we might save our future...

CLASSES

For this streamlined ruleset there are six available character **Classes**. The class that you choose for your character will impact three of your Ability Scores, increasing the chance of a successful result for any dice rolls related to these abilities.

Each Class gives a (+6 / +4 / +2) bonus to your Ability Scores:

Cypher (Int/Cha/Dex) *Hackers, cryptopunks, shadow-dealers.*

Magus (Wis/Int/Cng) *Adepts of the arcane arts.*

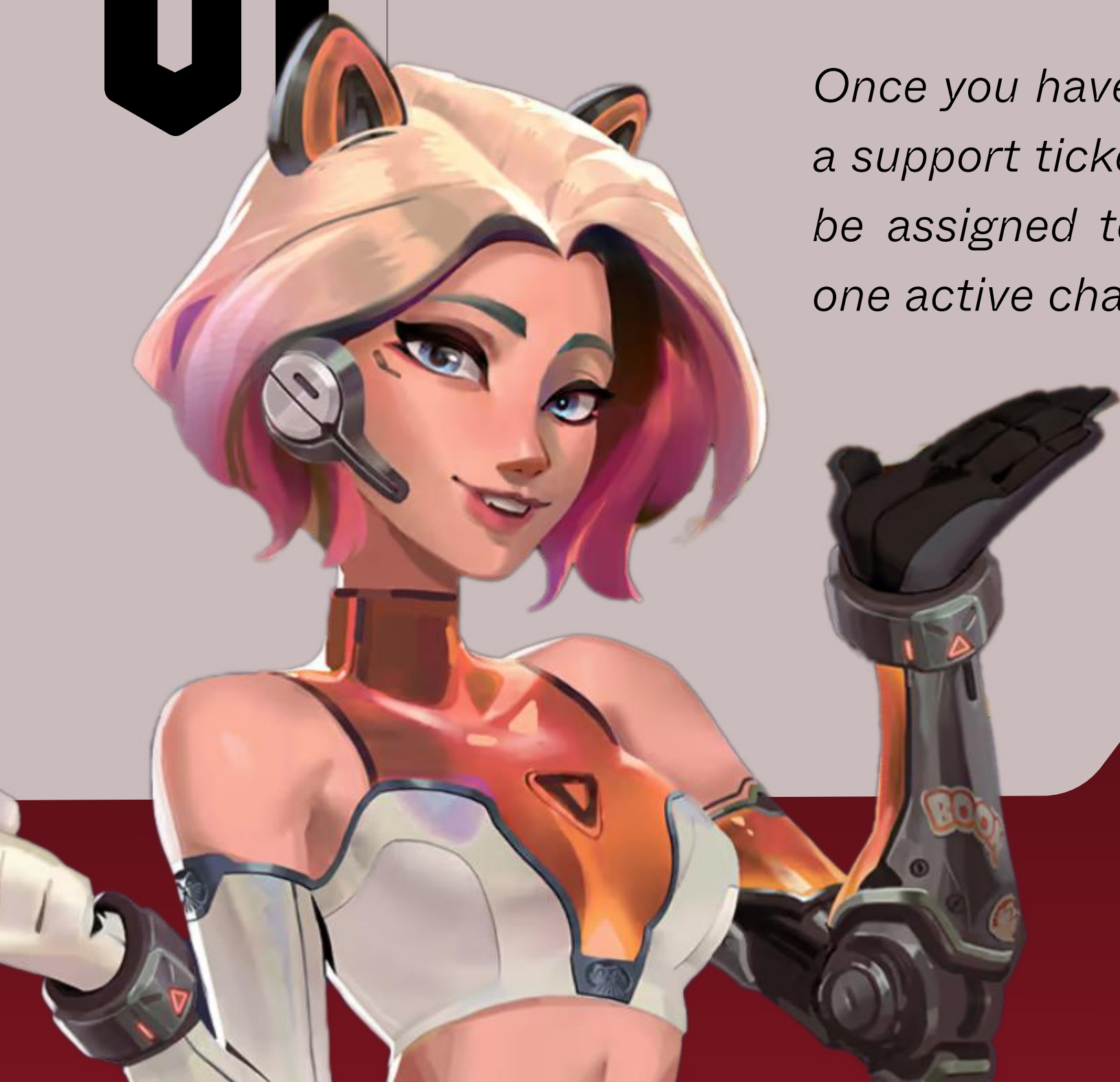
Mesmer (Cng/Wis/Cha) *Benders of reality and the mind.*

Bladewalker (Str/Dex/Cng) *Warriors, ronin and guards.*

Runner (Dex/Str/Int) *Rogues, spies and gunslingers.*

Muse (Cha/Cng/Wis) *Oracles, lovers and performers.*

Once you have chosen a Class and Faction, open a support ticket on the KPR discord and they will be assigned to you as roles. You can only have one active character at a time.



CLASSES

In addition to Ability Score modifiers, each Class has a core set of skills that can be used in-game. To use these skills, the player must announce that they would like to use them and the Narrator will provide next steps to complete the action.

Base skills available to each Class are as follows:

***Cyphers** are masters of the underworld and know how to navigate their way around the darker corridors of New Eden, whether digitally or physically. They excel in deception, technical innovation and gaining access to places other citizens can't.*

Social Engineering: once per encounter, Cyphers can attempt to gain additional information using their powers of deception. This provides a +1 bonus to the target of any social-based rolls.

Code Encryption: once per day, Cyphers can attempt to decrypt any information and/or gain access to network servers or device firmware. Success is determined with an INT roll, but if given at least one hour to concentrate add +1 to the check. You can also encrypt information on your own devices at will.

*To be a **Magus** is to understand how reality is constructed and know how to use that to great effect. Understood by few, feared by many, the ability to control the elements and construct new forms through sheer force of will is a rare skill to master.*

Occult Knowledge: your knowledge of the arcane arts is extensive and you have a broad understanding of history, ritual and religion to call upon. Gain advantage for any knowledge rolls regarding these subjects or anything related to magic.

Spellcaster: there are many Keepers that learn how to use Kai, but only a Magus has truly mastered the elements and is able to manipulate them for a wide range of effects. They can cast spells related to the four elements (Earth, Water, Air, Fire) and direct them as desired. The final effect of individual spells and their difficulty of casting is at the discretion of the Narrator.

***Mesmers** have attuned themselves to the magnetic forces that all living things emit and are trained in manipulating them to various ends. They can disrupt neural pathways, influence emotions and pick up on subtle energies that give them a unique ability to see the past as well as persuade the present.*

Hypnotic Trance: once per encounter, Mesmers can attempt to hypnotise an individual to put them into a highly suggestible state. This can only be done in relatively calm surroundings (i.e. not in combat), however it does *not* require the target to know or understand that an attempt is being made. Make an opposed WIS roll with advantage to see if the attempt is successful.

Clairvoyance: Mesmers can use their innate abilities to sense the aura of an individual person, object or place. This can be done at will, but requires concentration before each attempt. If the Mesmer is able to concentrate on the task for at least 10min, a successful WIS check will grant a related vision of the past.

***Bladewalkers** are seasoned warriors, born and raised in the conflicts that have threatened to tear New Eden apart for generations. They know how to wield kai-infused hand weapons and are always the first to step forward when danger rises above the surface of a fragile tranquility.*

CLASSES

Strike Echo: Bladewalkers are trained in weapons combat to an extent that grants them superhuman speed and ability. When using melee weapons they are able to attack twice with one action, choosing either a single target or two that are adjacent to one another.

Combat Ready: through years of discipline and a focus on physical health, Bladewalkers have developed a constitution far above the average citizen or even Keeper. They are ready to face the toughest of situations and come out on top, having an extra wound available for a total of FIVE wounds maximum.

Runners are who you go to when you need something done quickly and quietly. They slip through shadows and jump across rooftops with ease and, if you manage to see one, good luck catching up to them. Often found in street gangs and as black market couriers, they tend to skirt on the wrong side of the law. Even so, they are usually the ones the authorities contact when they need a job handled under the table.

Phantom Step: Runners are adept at moving invisibly and have honed their ability to avoid detection from even the most sensitive of security systems. Gain advantage on all stealth-based rolls, including any involving surveillance technologies such as motion sensors, drones or cameras.

Hardcore Parkour: The athletic ability of Runners is unrivalled, with decades of practice racing through the layered streets of New Eden's cities. They automatically succeed at all basic gymnastics tasks (i.e. running, jumping, tumbling) and gain a +2 DEX bonus to roll targets for any difficult feats of parkour.

MUSES

One does not simply ignore a **Muse**. Whether performing in neon-lit clubs or swaying high-powered execs, their allure is unmatched. Often found among artists, corporate agents or social influencers, Muses walk the line between inspiration and manipulation. They bend your emotions to their will and use their talents wherever persuasion might outweigh force.

Siren Call: Muses are able to capture people's minds and gain their trust. Whether through music, art or diplomacy, they can convince both individuals and/or large groups of people of pretty much anything they wish. They gain +2 on all CHA ability checks, in all circumstances.

Inspirational Aura: Twice per day, Muses can use their power to inspire people and increase the capabilities of those around them. Even without talking, their presence provides others with the ability to push harder to succeed. When active, allies within eyesight gain +1 to all ability checks for a ten minute window.



FACCTIONS

Following the selection of a Class, each character chooses a **Faction** which grants a **+1 bonus** to the stated ability along with other advantages related to their role in New Eden:

Prisma (Int) One of the two primary factions, that prizes technology and progress with a cautious view of Kai energy.

Animus (Wis) The second major faction in New Eden, embraces Kai energy and aims to live in harmony with cosmic forces.

Holy Rollers (Cha) A young group of faith-based evangelists, known for their vibrant energy and propensity to seeing visions.

Hellfire Adepts (Cng) A shadowy secret society that aims to influence New Eden through hidden means.

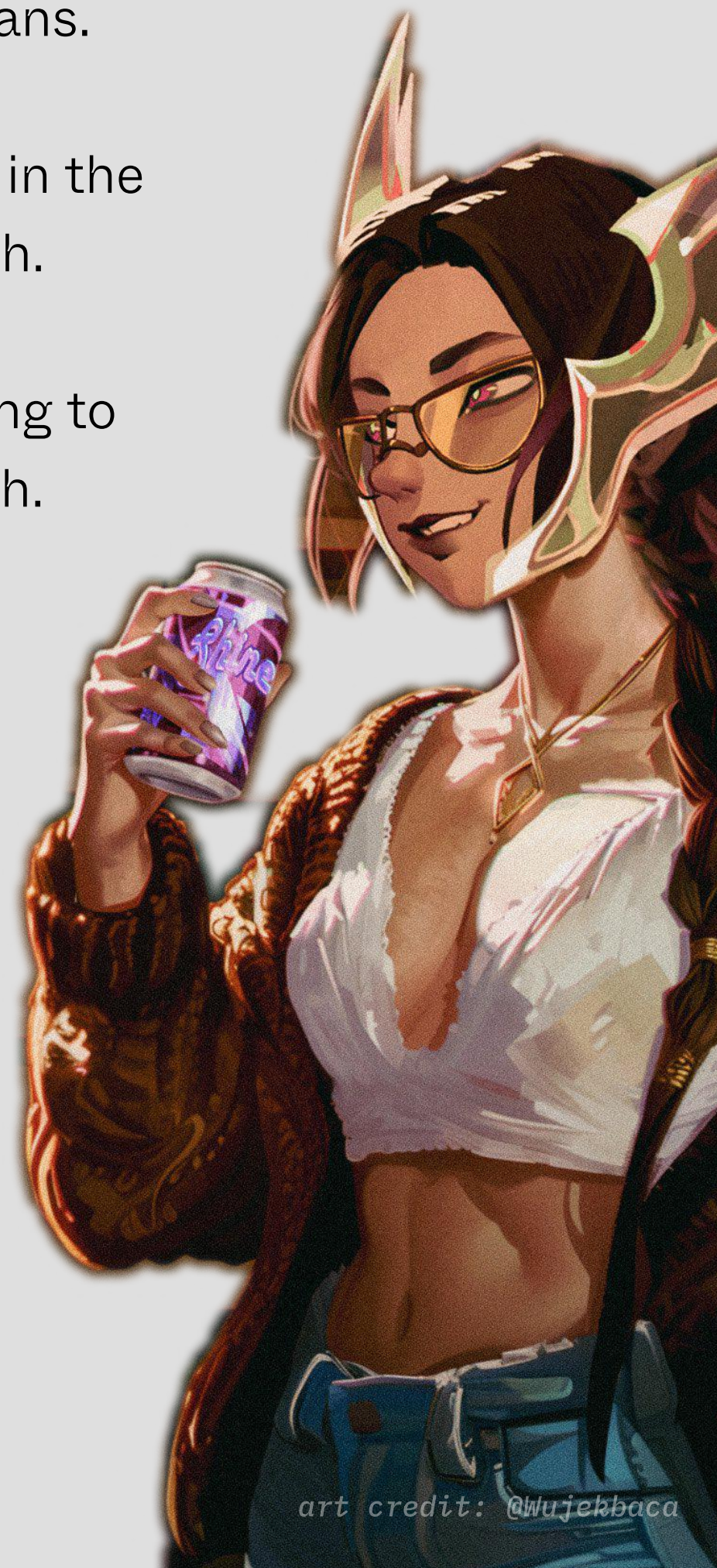
Hyades (Dex) Nature lovers rarely seen in the cities, feared for their ferocity and stealth.

Wanderer (Str) Lone nomads who belong to no single faction and walk their own path.

Ability Scores are calculated by adding the Class and Faction bonuses to the base score of 10. Then choosing where to apply your additional +1 free bonus.

Example: a Cypher aligned with the Holy Rollers faction would have the following Ability Scores (before +1):

Int = 16	Wis = 10	Cng = 10
Str = 10	Dex = 12	Cha = 15



PRISMA



After the catastrophic events of the Flicker, many that survived did so with great suspicion of the role Kai energy had played in the destruction wrought on humanity. Rebuilding society was no easy task, even under the protection of the Firewall, and so the citizens of Prisma wanted to ensure Kai was carefully controlled. They entrusted the KPCO corporation to lead on its strict regulation, which soon granted a near-monopoly on how a large range of products and technology could utilise this supremely powerful energy source. The region around Prisma City quickly became the wealthiest and most powerful in New Eden, *but at what cost?*

ANIMUS



The people of Animus believe Kai is a substance of supreme metaphysical importance. Many even have a spiritual relationship with it that goes beyond practical use and veers into worship. Strong believers that humanity must live in harmony with the cosmos, Animus is driven to use Kai energy to its fullest extent and are suspicious of the overly corporate and profit-driven approach taken by those in the Prisma region. While they use technology widely, particularly Kai-infused innovations, they also prioritise a simpler life based on living closer to nature and being more connected with their surroundings.

FACTBOOK

HOLY ROLLERS



On the Eastern outskirts of New Eden, the town of Solis became home to an evangelical group. They worshipped in makeshift buildings designed to capture long rays of light, in which they would dance and work themselves into a visionary frenzy. Prophecies of a utopian future beyond the confines of New Eden began to spread far and wide, with their prominent female leaders becoming a regular sight in many towns far from their original home. Outspoken and at times forceful with their views, the Holy Rollers are called to a higher purpose that gives them a conviction often at odds with the authorities of the different zones they build a following in. Beware their wrath.

HELLFIRE ADEPTS



In the hidden alcoves of New Eden lies a secret society obsessed with occult knowledge and driven by a ruthless rationality, combined with the innovation that access to a near-limitless supply of Kai energy provides. Gaining entry to their ranks is no easy task, they work in whispers and behind closed doors, but not all of them are afraid to show their horns. Both metaphorically and physically manifested, they are an open statement of the power these sinister initiates feel is their birthright to wield. There are many tales told of their esoteric pursuits, but few truly understand what the Adepts are capable of and the connection they have to worlds beyond our own.

HYADES

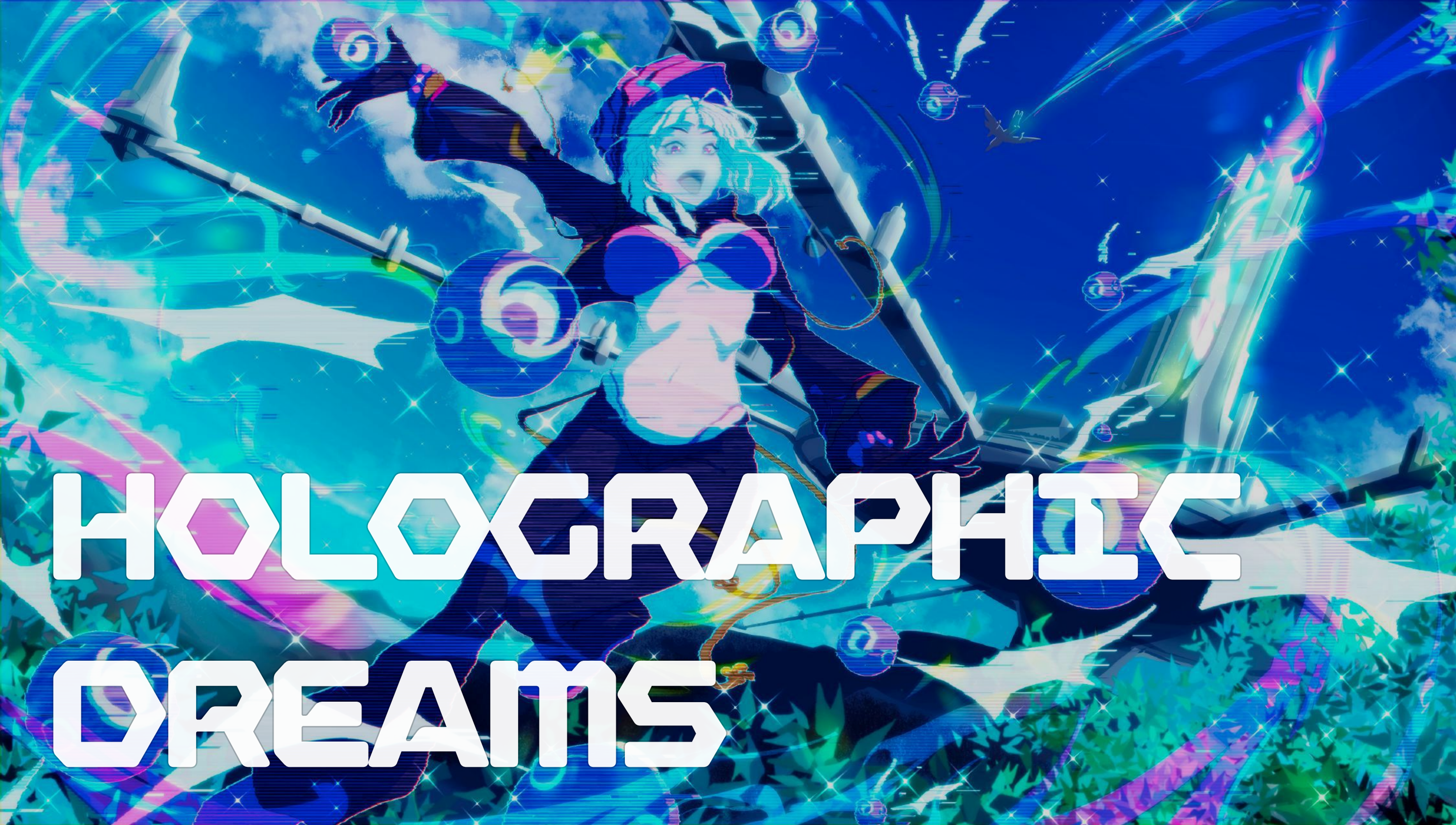


Word is spreading of a pair of mischievous sisters running an underground cabal filled with tricksters, thieves and assassins. On city streets across New Eden, many avoid the darker alleyways for fear they might fall foul of this nimble and ferocious crew of troublemakers. It is said that whenever it rains a new victim succumbs to their attacks, without much trace of evidence. The only thing seen is the glint of a cat's eye in the darkness, a reflection of Nature's justice that these stealthy assailants are sent to deliver. The name Hyades is not one many people dare say aloud, lest they find themselves the next day torn to shreds with only claw marks left behind.

WANDERERS



New Eden is home to many who have escaped the ravages of the world outside the Firewall dome. Whether born within its protective walls, or those drawn to the sanctuary it offers from the corruption of the Vines virus, even once inside it can be difficult to truly feel at home. In the landscapes of a world reborn, the Wanderers are those who seek freedom over belonging and solitude rather than safety in numbers. Outside the cities and larger towns there are many homesteads, nomads and mercenaries that prefer not to align with any faction other than their own survival. A tough life has led to many hardened citizens willing to make ends meet in whatever way they can.



art credit: @SAI7 / @Lenexyyy

The emergence of Holos sparked excitement and debate, but few understood the boundaries crossed in the search for digital immortality.

With the discovery of Kai energy in 1978, a wave of innovations reshaped society in ways scarcely imagine. One of the first breakthroughs was the evolution of holographic technology. Paired with the rapid advancement of artificial intelligence also brought about by Kai, a new frontier was unlocked that would forever change the course of human evolution.

Earlier advancements in laser technology had laid the groundwork for holography, allowing for the creation of ethereal images. Kai energy revolutionised the sector by enabling light wavefronts to interact with the energy field itself; producing holograms with unprecedented clarity, permanence and physical tangibility. What had once been fleeting illusions were now stable constructs, capable of interacting with physical objects, generating force and even simulating momentum. These advancements made holograms not only visually stunning, but incredibly versatile for both industry and entertainment alike.

At the forefront of these innovations KPC0, a megacorporation deeply involved in the processing of Kai, recognised the potential of combining holography with cutting-edge AI. While many competitors focused on

dominating the AI arms race, a small, secretive team within a distant KPCO outpost worked on the creation of new forms of consciousness, fully realized in the material world. By 1985, they had developed holographic projections capable of independent movement. A few years later, they achieved the unthinkable: the seamless fusion of AI and holography in a physically autonomous form.

This breakthrough sparked a technological renaissance. What began with advertisements and entertainment soon moved to AI companions, security systems and research assistants. Previously confined to static interfaces or clunky robotic forms, a range of AI utilities were reborn as interactive, holographic entities with their own distinct personalities. Freed from the constraints of mechanical bodies, "holo-beings" became integral to everyday life. Yet, the researchers at KPCO weren't content to stop there. They envisioned something far more transformative.

Hidden within KPCO's most secretive labs, a research department made up of neuroscientists, physicists and engineers were busy exploring the frontier of consciousness uploading. By leveraging Kai-powered data servers that could store and retrieve information quicker than ever before, they succeeded in transferring human consciousness into a digital form. For the first time, a person's mind in all its nuance could be preserved outside of their physical body. Early research volunteers, terminally ill family members and those with immeasurable wealth underwent the experimental process, awakening in digital form. Equipped with full sensory perception within holographic avatars these pioneers, dubbed "Holos" in internal memos, were heralded as humanity's next evolution. What happened to the physical counterparts they were drawn from has been deleted from record.

Holos offered what many had dreamed of but few had dared believe possible. A path to digital immortality was now available. No longer bound by aging or frailty, a person's essence could persist indefinitely, experiencing life through holographic avatars as vivid and expressive as their physical bodies had once been. Even more, these avatars were not limited by the constraints of flesh.

They could adapt and alter their appearance, allowing Holos to embody different forms depending on their purpose or desire. Once in control of their own movements, they even quickly figured out how to glitch their holographic form in and out of existence, allowing short-distance

teleportation tied together by the sinews of their digital consciousness. Excitement brewed as the uploading process was tested, with dozens of successful cases placed into the secretive records of the KPCO archives. The unsuccessful cases were quickly censored and buried.

Following a coverup of notable early failures, Dr. Helena Rhys, a leading neuroscientist and one of the architects of consciousness uploading, grew increasingly concerned about the implications of the technology. Initially a staunch advocate, she began to notice disturbing trends. The process was controlled entirely by KPCO, concentrating immense power in the hands of a single entity. Worse, the procedure stripped individuals of true autonomy, binding their digital selves to systems entirely under corporate oversight. She further stated that the process was one of no return, but her misgivings in this area remain fully redacted.

Helena's internal warnings were ignored. Frustrated, she went public as a whistleblower. News feeds lit up with her revelations, exposing the risks and ethical pitfalls of a technology that promised immortality at the cost of corporate control. For a brief moment, it seemed like public opinion might turn against KPCO. There were also, however, many citizens that were more amazed by the technological advancements than they were concerned by the ethical and moral implications. Debate grew in the public sphere until suddenly, as quickly as it had begun, the story vanished from headlines. The issue effectively contained by a controlled narrative spoken in soundbites from confident mouthpieces. Helena herself disappeared under mysterious circumstances, as news pundits relayed that she had joined a group of revolutionary terrorists trying to bring down New Eden itself.

What the public didn't know was that KPCO had orchestrated her abduction. Intent on maintaining control over what was seen as their most important research capabilities, Helena was dragged from her apartment by unknown assailants and forcibly uploaded into the Kai-powered servers she had helped design. The rushed and traumatic nature of the process caused her consciousness to fracture. Instead of emerging as a cohesive digital entity, Helena became a disembodied awareness. A fragmented presence trapped within the servers, observing but unable to interact. KPCO covered up the incident, blaming her disappearance on rogue elements, but Helena's fate became a haunting secret lurking behind the promise of digital immortality. All while the public was unaware of what had occurred under the shadow of corporate control.

In the years that followed and as Holos began to interact with the public more regularly, their impact on society deepened. For some, they were a triumph of human ingenuity and a way to transcend death and redefine existence. For others, they continued to represent a profound ethical dilemma. Was a digital consciousness truly the same as a living human being? What rights did Holos deserve? Could society adapt to entities that no longer aged, required sustenance or faced physical mortality? Still small in number, their existence was debated but was seen by many as something to aspire to. A goal that could be achieved if productive enough to earn a place among these evolutionary demigods of New Eden.

The existence of Holos raised questions about the soul, identity and the meaning of life itself. Those who embraced the technology saw it as a way to explore existence without the limits imposed by nature. Holos became pioneers of culture, science and governance. But others, wary of the power KPCO wielded, saw them as tools of control, bound by the systems that created them.

From within the youth of New Eden, seemingly in response to this attempt by humanity to play at creation, a new force would soon emerge: the Keepers. These individuals, born with a natural affinity for Kai energy, demonstrated abilities that seemed almost supernatural. Their arrival hinted at a deeper connection between humanity and the forces that had allowed for the engineered Holos. A reminder that, even as humanity sought to transcend its natural limits, it remained tightly bound to the mysteries of the cosmos.

By the late 21st century, New Eden stood at a crossroads. Digital immortality had redefined the boundaries of life and death, even though still only available to a select few. Understanding the meaning of existence in a world where death was no longer inevitable became the newest frontier, one that many saw as a way out of the cataclysmic events of the Flicker that had occurred nearly a century earlier. The choices made would determine whether humanity's reach into digital immortality would be its ultimate triumph... or its final undoing.

That story is yet to unfold.



Mechanics

Using your Ability Scores, any chosen **Action** is assigned the relevant target by the Narrator and the Player rolls 1d20 to indicate success or failure. Rolling *under* the Ability Score is considered a success.

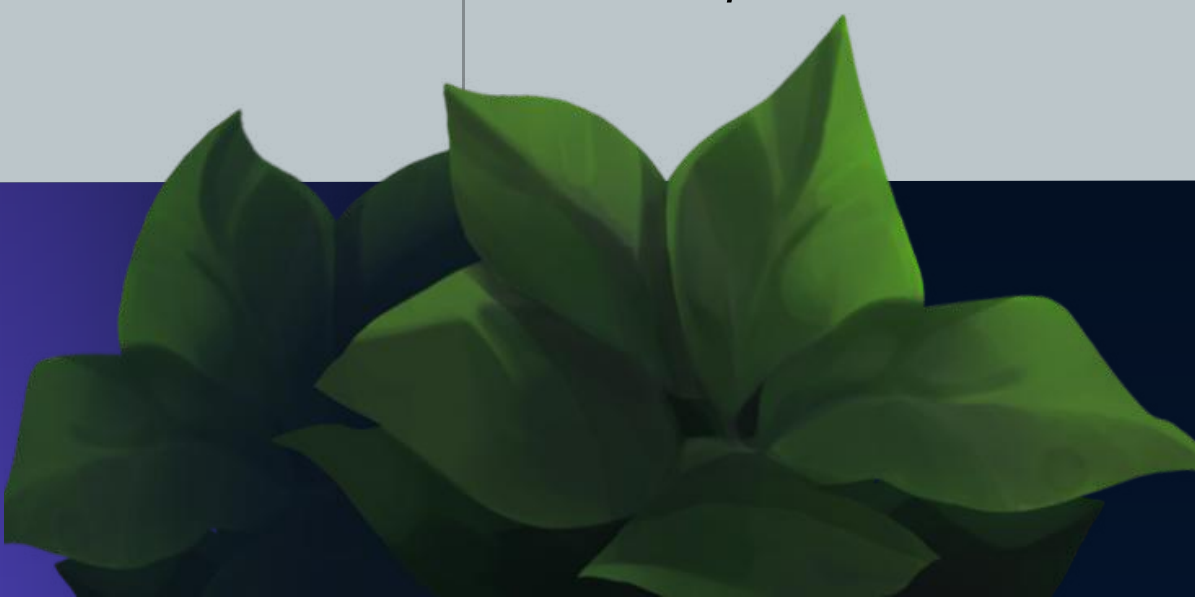
Example: Player A wants to jump over a wall. Narrator chooses DEX ability and the Player rolls a 15, which is under their DEX score of 16. The action is a success.

For any **Opposed Actions** (e.g. racing, combat, debate) a dice roll from each party is made against the chosen ability. The roll that is furthest *under* the chosen Ability Score is the winner. Ties are decided by the highest base Ability Score, or by a reroll.

Example: two characters are grappling and the Narrator chooses the STR ability for the skill check. Player B rolls 11, which is 5 points under their STR of 16. NPC rolls 12, which is 2 points under their STR of 14. Player B wins the opposed roll.

Actions that result in harming a character or NPC will cause a **Wound**. Each character begins with FOUR Wounds, after which they are Incapacitated. NPCs have different numbers of Wounds (usually one or two) as decided by the Narrator.

Any character that becomes Incapacitated during the course of a Scenario is taken out of the story and is not able to participate in another Scenario for one calendar month. *Note: Keepers cannot die during the course of a Scenario, but can only be Incapacitated.*



ADVANTAGE

At the discretion of the Narrator or in relation to a special Class skill, a particular Action might be given an **Advantage** or **Disadvantage** to indicate that the action is particularly easy or difficult to achieve:

Advantage = roll two dice (2d20) and take the lowest result

Disadvantage = roll two dice (2d20) and take the highest result

For extremely challenging situations the Narrator can choose to apply a 2x Disadvantage, so that three dice (3d20) must be rolled. Extremely easy situations are an automatic success.

Players interacting with NPCs of the same Faction as their active character (i.e. Holy Roller, Hellfire Adepts etc.) receive Advantage on any social rolls such as those relating to charm, persuasion, fast-talking or information gathering etc.



CHARACTER

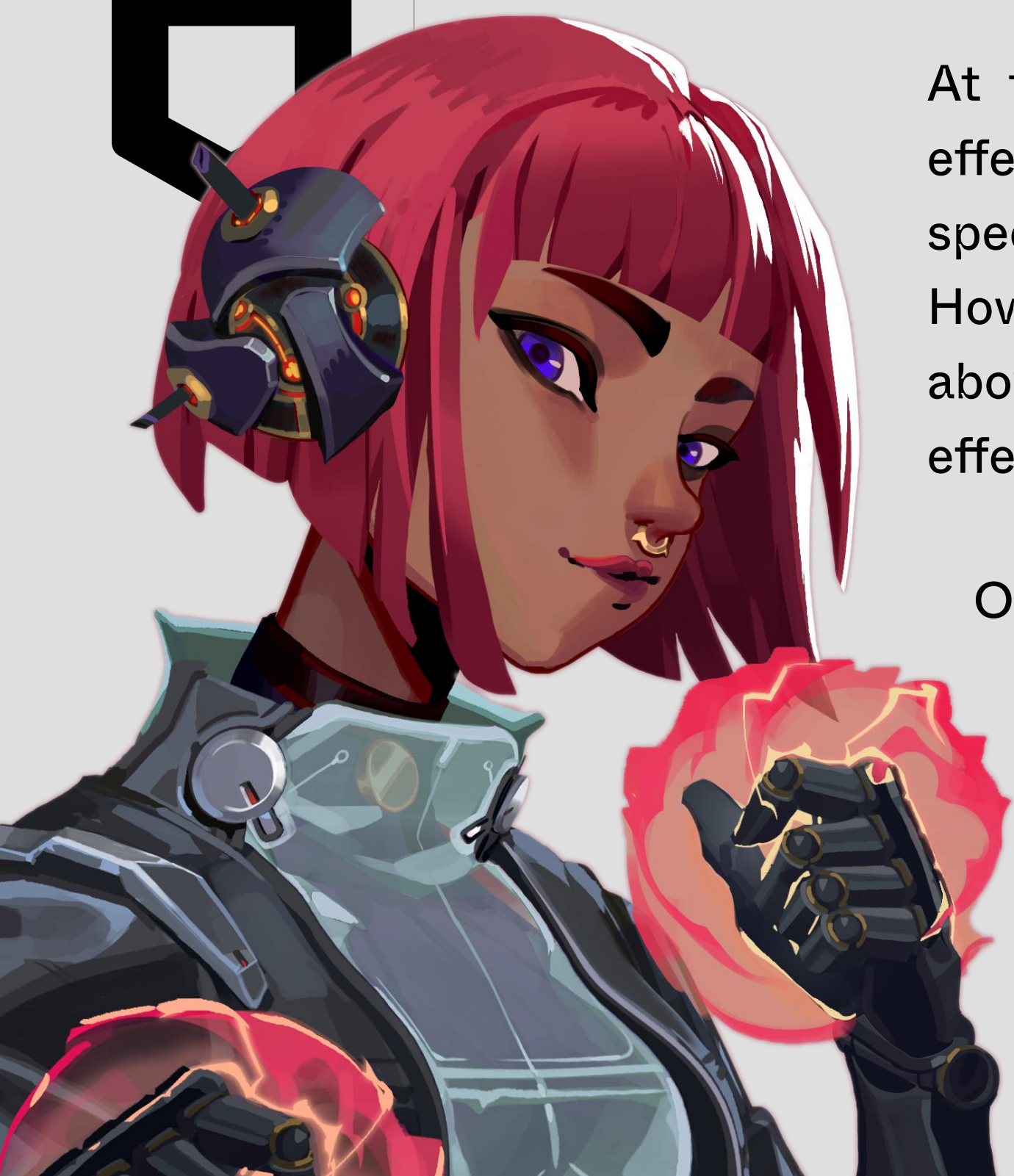
Keepers are inherently powerful people, capable of a wide range of amazing things. Their attunement to Kai energy means they have moments when they are particularly charged and able to use this energy to go beyond their normal limits.

To encourage this kind of heroism, each character receives **THREE** charged slots that can be allocated during the course of each Scenario. These can be used in the following ways:

- **Advantage Added** to a dice roll of your choosing (before rolling). This can also be used to mitigate any single Disadvantage point that might be applied.
- **Return Damage** when wounded, causing the equal amount of wounds to the attacker. This effect can only be used if the attacker is within 20ft of the Keeper.
- **Damage Burst** upon a successful hit, cause +1 wounds to the amount that would normally be applied.

At the discretion of the Narrator, additional effects can be approved that are relevant to specific events occurring for the players. However, these should be in line with the above options in terms of power and gameplay effect.

Once used, charged slots cannot be regained during the course of any single Scenario (which might take place over multiple play sessions). They are restored at the beginning of the next Scenario story arc that the Keeper character takes part in.



PERKS

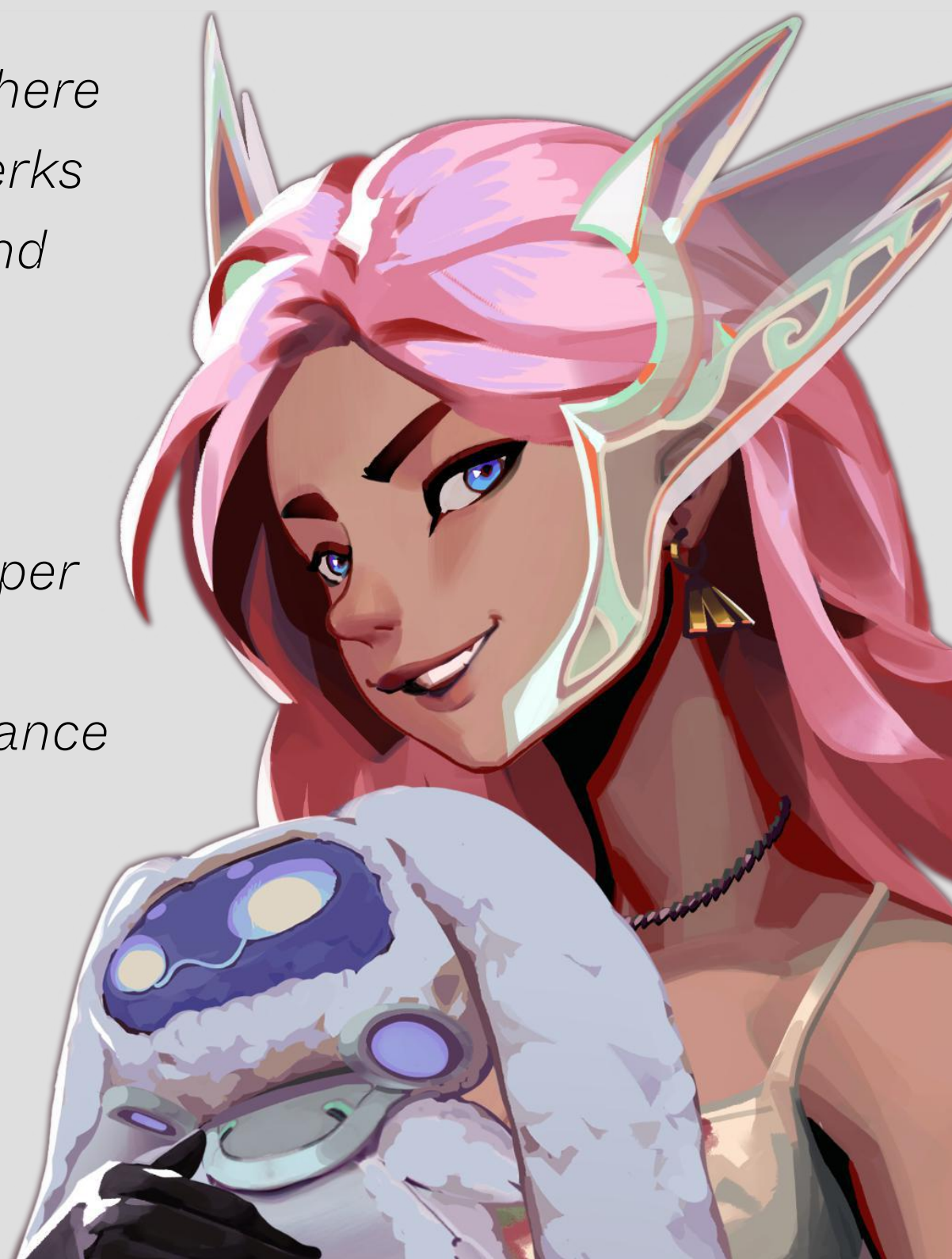
There are no character levels in this streamlined ruleset, however the Narrator can allow **Perks** that are added to a character depending on both the chosen Class and the traits of the active-character NFT selected by the player. Perks provide their own bonuses and additional skills to be used by the player.

The category, trait name and number of Keepers in the 10k collection it applies to are displayed, alongside the effect/s of owning a Keeper NFT with that trait. In order to have these Perks applied, the player must designate the ID of the Keeper being used for their active character. They must also own that particular NFT in order to use it as part of an official scenario.

Traits can stack if they are included as part of a single Keeper NFT, so it is possible for a character to have three or even more Perks active at one time. Where there are multiple variations of a trait (e.g. Defiled Claymore and Molten Claymore) then they all receive the Perk based on the common keyword.

Example: Keeper #5161 shown here has access to two additional Perks for having the Winged Guard and !Pamp traits in its metadata.

This will grant the ability to summon a Pamp familiar once per day, to command as they wish. It also grants the player one chance per day to receive a prophetic vision, as well as a +1 bonus to DEX-based defensive rolls.



KEEPERS

Special: Blade (196 Keepers)

Kai-infused blades of great power, made with precision.

Twice per day can energy surge on hit causing two wounds.

+1 to all STR-based melee attack/opposed roll targets.

Special: Claymore (108 Keepers)

A weapon of this size isn't just for protection, it's a statement.

Can create a wall of obfuscating energy with a sweep action.

+2 to all STR-based melee attack/opposed roll targets.

Special: Slash (366 Keepers)

Razor sharp claws that can tear through the fabric of reality.

Provides advantage for all climb rolls and mitigates armour.

+1 to all DEX-based melee attack/opposed roll targets.

Entity: Holo (100 Keepers)

Holographic beings that exist between worlds.

Can glitch teleport up to 10ft in any direction at will.

+1 to all DEX-based dodge and melee attack/opposed.

Headgear: Telemech Mask (76 Keepers)

The overlay can be anything, so why not chaos?

Immunity from all poisonous gases or toxic air.

+1 to all CNG-based roll targets.

Hand: Powerfist (399 Keepers)

Harness the kai-energy and nobody can stop you.

Can punch through most normal walls and doors.

+1 to all STR-based roll targets.

Special: !Pamp (200 Keepers)

Never underestimate the power of Pamp.

Can summon a familiar once per day,

with 11 for all stats and one Wound.

DECK

Special: Android Suit (141 Keepers)

Adapt to any situation with the latest in cybernetic technology.
Three times per day, augment any DEX/STR/INT check with +1 roll target.

Special: Takeout (420 Keepers)

You've always got just the thing for when the munchies hit.
Once per day, heal ONE wound for a character of your choice.

Special: Lightning Enigma (49 Keepers)

The air will hum before the flash of retribution arrives.
Three times per day, use a lightning attack that causes TWO wounds on a successful DEX roll or a guaranteed ONE wound.

Special: Duality/Singularity Orb (89 Keepers)

Behind space and time lies a field of pure potentiality.
Three times per day, create a time-dilation bubble with a 20ft radius. Everything within is reverted back in time by 1d20min to its previous location (even outside the bubble). Requires a successful DEX check to land on target.

Special: Serpent (167 Keepers)

The serpents move through the mesh networks.
You can send out your serpent to run surveillance within a 1km radius. They have the ability to interpret all unencrypted data over the mesh network invisibly, as well as audio/visual of their surroundings if visibly manifested.

Special: Thaumaturgy (32 Keepers)

Reality is more malleable than we are led to believe.
You can generate visual and auditory illusions at will, within eye-sight as long as you maintain concentration.
+2 to all targets related to magic, ritual and the occult.



PERKS

Special: Charged Palm (451 Keepers)

Learning how to manipulate flames has many uses.

Can create small fires at will, which can also be used to ward off enemies. +1 to STR-based attack/opposed melee roll targets.

Special: Mainframe Axe (225 Keepers)

Many problems in life can be solved by the swing of an axe.

Gain advantage for damage rolls to objects outside of combat. +1 to STR-based attack/opposed melee roll targets.

Special: Cyber Drones (275 Keepers)

With an eye in the sky, the world looks different.

Can deploy up to THREE drones per scenario to scout an area, distract enemies or retrieve a small object. +1 to all DEX-based roll targets involving drone control or remote operations.

Special: A1726 Screen (437 Keepers)

Hacking is more than just a crime. It's a survival trait.

Gain advantage for any ability rolls related to hacking or cybersecurity. +1 to INT-based rolls targets involving computing.

Special: Snow (285 Keepers)

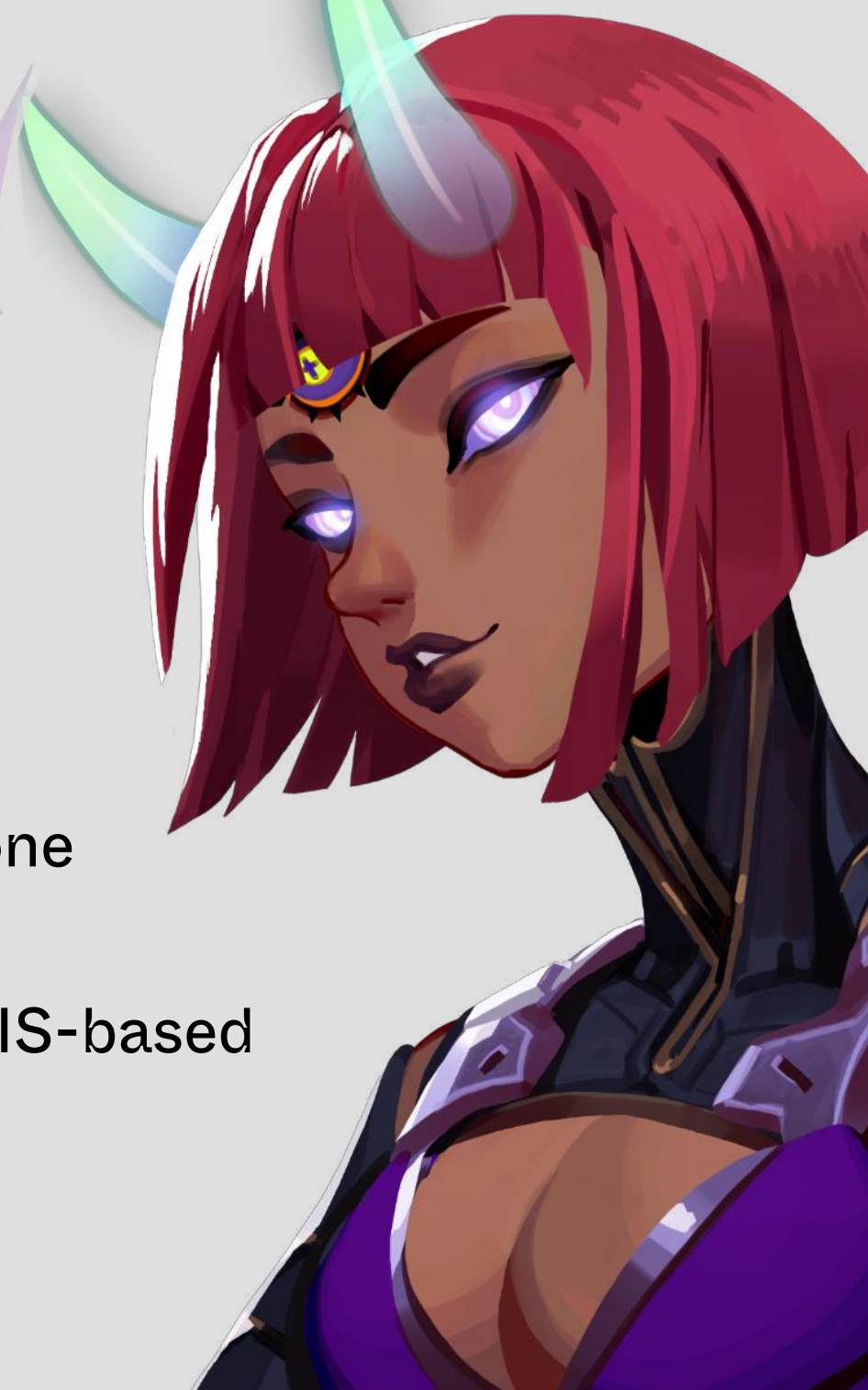
Not everyone feels the cold.

Provides advantage for cold-based resistance checks and ability rolls.

Eyes: Daeva (100 Keepers)

To meet their gaze is to risk being caught in their web.

THREE times per day, can force someone in face-to-face conversation to tell the truth about a specific topic. +1 to all WIS-based opposed roll targets.



PERKS

Headgear: Winged Guard (144 Keepers)

They were carried along by the wings of angels.

Once per day can roll against WIS to receive a prophetic vision.

+1 to DEX-based defensive roll targets.

Special: Kai Vapor (386 Keepers)

A sweet smelling nectar announces their presence.

Can release gas within 20ft radius that causes a bliss interrupt.

+1 to all CHA-based roll targets relating to physical location.

Headgear: Sentry (48 Keepers)

Protection is the greatest form of valour.

Once per combat can create a forcefield within 40ft of player.

+1 to all STR-based defensive roll targets.

The above Perks are situational abilities triggered by the player, with certain restrictions according to their descriptions. Any ambiguity in effect is decided by the Narrator. Through the use of the Perks system, each Keeper is given a unique set of abilities and these intersect with the chosen Faction and Class in order to create the active character for each player.



ITEMS

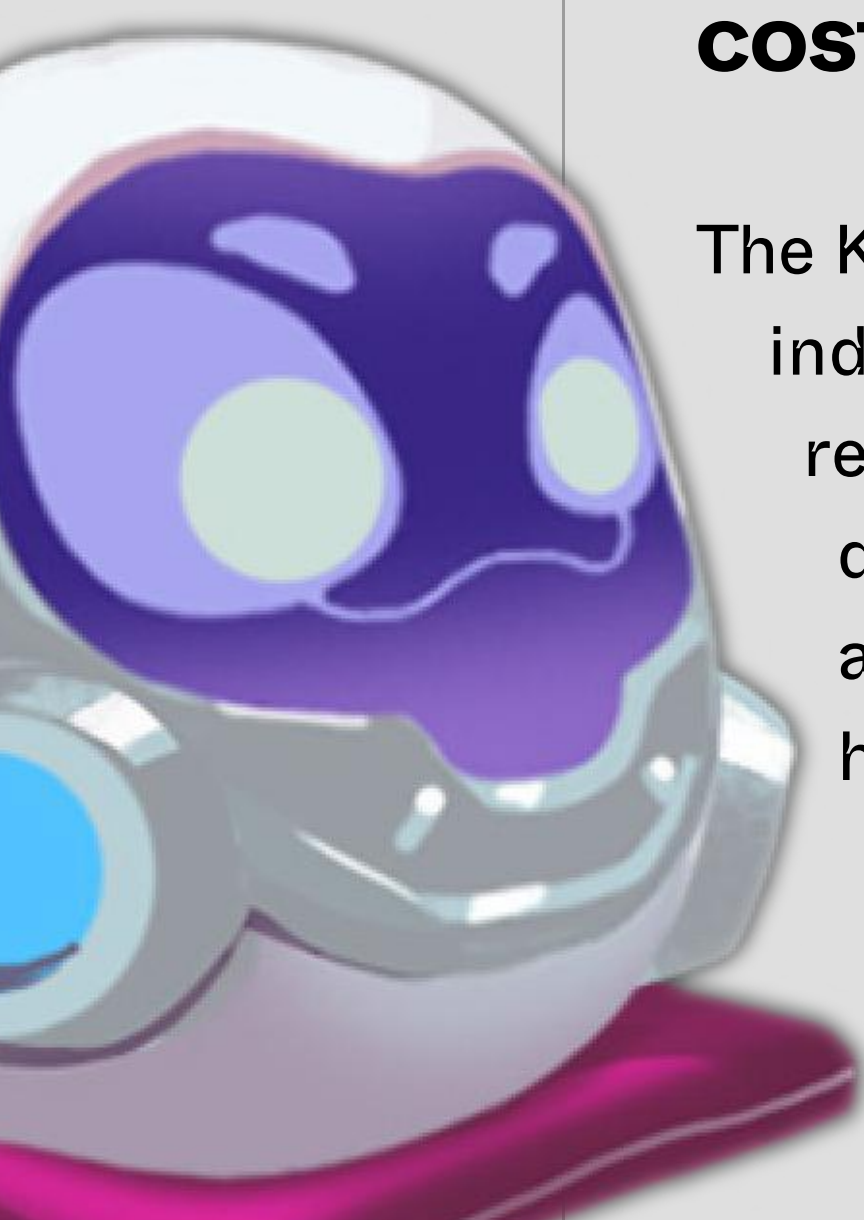
Throughout the course of a campaign, player characters will use a range of different items in addition to their Abilities and Perks.

Even though the post-cataclysmic setting of New Eden means there are restrictions on items common in our own world, this is countered by technological advancements that enabled a manufacturing and processing boom. The greatest restrictions are often base resources themselves, but there is a vibrant commercial industry; including a thriving blackmarket where all kinds of rare and intriguing goods can be found...

This section gives an outline for items that can be found relatively easily in the towns and cities of New Eden, particularly for those with the kinds of connections many Keepers have. The Narrator can decide how easily items can be sourced, but the ones included here are readily available and can be found within most populated areas. More obscure and unique items, however, require specific contacts and potentially also fall under regulations that different regions have. Although there are many lawless zones, most cities are controlled by established governance structures and items such as powerful weaponry (i.e. guns and explosives) are often heavily restricted.

COST AND SIZE

The KPR Narrative Ruleset uses a relative wealth system, which indicates the general purchasing power of a character. This reduces the need for accounting, while maintaining variety depending on specific circumstances. The sizes of objects are also indicated, which the Narrator can use to determine how many objects can be carried simultaneously.



Because of the use of the Perks system to designate many kinds of special items used by Keepers, these are not duplicated here. They should be considered particularly rare and/or powerful items that are not otherwise readily available.

COMMON ITEMS

The list of items included in this section are a guide to some of the more commonly available categories. There are many other items, gadgets and materials available that are not listed here.

Players are encouraged to experiment and work with their Narrator to create additional items that might be available in their own particular campaigns and scenarios.

Item Name	Cost/Size	Effect
AR Headset	High / M	+1 to INT and -1 to DEX rolls while worn
Credstick	Low / S	carry digital credits securely for payment
Flashlight	Low / S	remove disadvantage from dark environments
Grapple Shot	Mid / M	climb up to 100 feet, with successful DEX roll
Laser Scalpel	Low / S	cut any organic item with precision
Plasma Cutter	Mid / L	cut through any metal with precision
Purifier Mask	Low / S	provides immunity against any toxic fumes/air
Rebreather	Mid / S	provides 30min of oxygen to the wearer
Travel Rations	Low / S	heals one wound, with rest period of 4+ hours
Survival Gear	Low / M	provides advantage in wilderness environments

Items

CYPHER SUPPLIES

With technology prevalent throughout New Eden, it’s important to be well equipped in the digital sphere. Whether you are looking to boost a signal or fend off intruders, there’s kit for it.

Item Name	Cost/Size	Effect
Alarm Unit	Low / S	sound an alarm if triggered by motion, sound or environmental changes (pick one)
Datapad	Mid / S	+1 to crack into encrypted devices
Jammer	Mid / S	block surveil/comms channels, with INT roll
Lockpicks	Low / S	+1 to unlock normal door locks
Range Module	Mid / M	adds 5km range to drones, with INT roll
Stinger	High / M	intercept comms/video channels, with INT roll

WEAPONRY

Weapons come in all shapes and sizes, all of which hurt. Heavy weaponry is restricted, but there’s a range of options out there.

Item Name	Cost/Size	Effect
Distraktor	Low / S	creates a noise audible within 250-foot radius
Flare	Low / S	incendiary effect (DEX save) for one turn on hit
Grenade (EMP)	Mid / S	disables all electrical devices within 100 feet
Grenade (Frag)	Low / S	causes one wound on all targets within 30 feet
Shockprod	Mid / M	paralysing effect (STR save) for one turn on hit
Shockrope	Mid / M	paralysing effect (STR save) 30min on restraint
Tranq Gun	Mid / M	sleep effect (STR save) for 30min on hit

ARMOUR

Protecting yourself is of primary importance in a world always teetering on the brink of chaos. Especially if you are heading out of the cities, having the right protective gear is a must.

Item Name	Cost/Size	Effect
Bubbleshield	Low / S	polyfoam bubble that can take one wound
Cardboard Box	Low / M	it's a cardboard box, folds up flat
Chromatic Suit	High / L	create a blinding flash of colour, disadvantage to all attempts to hit the wearer for two rounds
Hunter Suit	Mid / L	advantage to all outdoor camouflage attempts
Prismatic Field	High / M	provides DEX save to block objects moving at high velocity, once per combat
Reinforced Trenchcoat	Mid / L	+1 to opposed rolls against melee weapons

MEDICAL SUPPLIES

New Eden is filled with many wonderful medical advancements, nootropics and elixirs. The local apothecary will have more options under the counter, just make sure you know what you're taking.

Item Name	Cost/Size	Effect
Antibiotics	Low / S	heals disease effects when used for three days
Antitoxin	Low / S	heals poison effects, once per day
Crimsonberry	Low / S	heal one wound (animals), cause one wound (humans) per dose
Nanoshot	Low / S	heals one wound, can only be used once per day
Peak Pill	Mid / S	advantage to all rolls for one hour, followed by exhaustion for one day (-1 to all rolls)



Over a century has passed since the discovery of Kai sparked the Golden Era of mankind, but the unbridled optimism and prosperity did not last long. Fifteen years later, a threat to the foundations of global society appeared: the Vines...

Initially appearing as dark lines that pulsed across the surface of Kai-infused technology, it became clear that the affliction was communicable to humans. The lines crawling across the bodies of the infected earning it the 'Vines' moniker.

A seemingly minor virus, initial symptoms were a stone-like hardening of the skin, a heightened sense of agitation, and, in rare cases, delirium. Though the origin of the virus remained elusive, the public was reassured that there was nothing to worry about. The best minds were working on a cure and the Vines would be a temporary setback, a footnote in history.

Everything changed soon after when the public became aware of the Aberrants.

Whistleblower testimony would later reveal that world-leaders had known about the existence of Aberrants for some time, but the Golden Era came to an abrupt end when an outbreak in a major metropolitan area left hundreds dead.

A direct result of having contracted Vines, the Aberrants took a number of forms depending on the stage of the infection. Initially warped figures with hardened skin and sharpened limbs, the infected grew increasingly nightmarish, bound together by a web of black tendrils.

Feeding on Kai, the Vines spread rapidly across the globe, resulting in resource scarcity and sending civilization into chaos as hordes of Aberrants emerged.

With governments embroiled in damage control and finger-pointing, military units and corporate mercenary groups, untested after years of peace driven by the Golden Era, were quickly engulfed by the terrifying Aberrant hordes. Nowhere was safe.

In the year 2000, with the world already teetering on the verge of collapse, a sudden surge of Kai-energy burst through Vines-infected infrastructure, resulting in a systemic power failure that plunged the world into darkness. With global power and supply chains halted, access to the basic needs of food and water quickly became a fight for survival. Violence and civil war soon followed as the last vestiges of human civilization collapsed.

This event – which would become known as the ‘Flicker’ – tipped the scales forever in the favour of the Vines and allowed the Aberrants to fully consume the remnants of the old world.

All seemed lost. Yet, there was still hope...

Overlooked in the chaos, a prominent Kai collection facility roared back to life the day after the Flicker. Drawing raw Kai-energy down from the aether, the Keep projected a translucent dome over the surrounding territory. Halting the advance of the Aberrants across an area still inhabited by millions.

New Eden was born...



NEW EDEN

New Eden is a fragile sanctuary in a broken world. Though roughly the size of a small country, it is not freedom that defines New Eden but containment. Outside the Firewall lies a wasteland twisted by an otherworldly corruption. Within the sanctuary, factions compete for power and control of the limited resources available.

This chapter explores some of the key locations of New Eden. From the illuminated towers of Prisma City to the ritual temples of Animus and the lawless sprawl of Altona, each reflects a different vision for humanity's future and the people that are drawn towards them. Understanding these regions and how they operate is essential for telling meaningful stories in the KPR universe. Where characters come from and who they trust, will all be shaped by the region they call home.

Welcome to New Eden. A world that survives on a knife's edge and a stage upon which every choice leaves a mark.



NEW EDEN

Prisma City stands as one of the most prominent cities in New Eden, with nearly a million inhabitants (1/3 of the total population of New Eden). Serving not only as the heart of the Prisma region, but as the largest population centre in the Safe Zone, there are Keepers from all walks of life (and different factions) that find themselves operating within its boundaries.

A bustling commercial area with a vibrant energy, the city embraces technological advancement and new ways of life following the devastation wrought by the Vines. The infrastructure of the city is the most advanced in New Eden, built upon the socioeconomic progress that the Prisma faction continue to push for; along with the continued use of Kai energy to power the production of advanced technology.

Prisma City is overseen by KPCO authorities who have been trusted with running the commercial interests of the city and providing security for its many residents. The city is run in conjunction with a Council of Sentinels, which represent the interests of Keepers throughout the region. Different zones within the city are overseen by local leaders, who are for the most part left to their own devices as long as there is no conflict or attempts to stop the smooth running of the commercial enterprises that the city is founded upon.

Citizens live in modular AI-assisted apartments, adapting their space on demand via shifting partitions and augmented reality overlays. Most commute by light-rail networks or personal gravbikes and the streets are orderly and filled with autonomous delivery vehicles. Social life thrives in neon-lit squares and the more quiet surroundings of district parks, through to underground clubs and multi-layered zones such as the New Moon Carnival that cater to desires both virtual and physical.

NEW EDEN

Nestled in New Eden's verdant heartlands, **Animus** contrasts sharply with Prisma City's neon-lit sprawl. Here, nature and technology intertwine, guided by the belief that Kai energy is sacred and not merely a power source. Towering biotech structures blend human craftsmanship with organic growth, sustained by solar energy and Kai-infused systems. Localised living is the norm and wide promenades run through the city, flanked by gardens and vertical farms that provide for its people. Citizens move at a more measured pace, some walking in contemplation while others glide by silently on hoverboards, gravbikes or smaller delivery vehicles.

Deeply attuned to the natural world, Animus embraces Kai energy as a living force that flows through its structures. Buildings seem to breathe and are constructed from Kai-infused materials that bend and cascade in non-linear, organic forms to accommodate the natural world. There are few right-angles to be seen and the city thrives on regenerative design and living infrastructure, merging urban life with the natural world. Yet beneath its beauty lies the weight of devotion and doctrine.

Animus is a spiritual stronghold, where Kai is revered. The Council of Sentinels in this region enforce strict principles of harmony, discipline and devotion to their cause. While this fosters unity, it also breeds rigid hierarchy and ideological control. Where Prisma City sees Kai as a tool for progress, Animus sees it as a cosmic truth. Its people live not for profit, but for purpose... though whether that purpose is enlightenment or dogma depends on perspective.

NEW EDEN

In Animus, community is the foundation of life. Private spaces are small and utilitarian, giving way to shared hubs that serve as centres for socialising, art and music. Technology here feels less invasive and more integrated; the presence of animals is more prominent; and water flows through channels designed to cleanse and energise with subtle Kai resonance.

Commerce is local and brands familiar in the Prisma region carry little weight. Instead, Animus thrives on guild-like networks of crafters, healers and enchanter. Those with magical abilities are in constant demand, assisting in everything from farming to medical restoration. Temples are alive with those worshiping the sacred presence of Kai and people gather in open squares for rituals of attunement. To participate in these ceremonies is considered a vital part of being a productive citizen.

Solis is the settlement in New Eden where the sun first rises, its people deeply connected to the light and renewal it brings. Though the Holy Rollers oversee the town as spiritual stewards, their grasp is tentative as many within Solis, hardened by an agricultural life near the foothills of the Syntos Mountains, resist their strict ideology.

This remote town is a place of resilience and defiance, where survival and faith intertwine but do not always align. As the next phase of their destiny approaches, the people of Solis walk a fine line between devotion and independence.

NEW EDEN

Out past the reach of corporate oversight, **Altona** stands as a refuge for those who choose their own path. Built by hands that value work over wealth, it's a place where independence thrives and survival is earned not given.

The people here are as varied as the land itself with renegades, wanderers and outcasts each carving out a life under open skies. There's no promise of comfort, only the freedom to live on your own terms where the only rule that matters is respect.

The people of **Lake Kairos** live apart from the other factions of New Eden, following their own ways shaped by a close proximity to water. They primarily act as a neutral force, guarding the waterways of the Greenrun River and ensuring they remain free from conflict and pollution. The Kairosian fishing industry sustains many throughout the safe zone, with carefully managed fisheries supplying fresh goods even to distant settlements.

They are the closest that New Eden has to a native population, with many of their lineages dating back hundreds of years in the same narrow region. To outsiders, they are welcoming but always cautious. Trust is not given easily and they are careful to remain detached from wider power struggles. The Kairosians value those who listen without demanding answers – and there are some things they will never discuss with outsiders.

Even among their own they have a complex system, using challenging rites of passage, that slowly initiates the people of the region into their collective role as Guardians of the Lake. Beneath the lake lies something that must not be disturbed. The caves deep below the surface hold a secret that has become a hidden core of the Kairosian identity.



The Keep and its role in creating New Eden and ensuring its continued survival is multifaceted. The exact motivation behind its functioning is currently unknown, and its inner workings are shielded from human view, however the district around the Keep has developed to take advantage of its existence and the resource it provides to the people of New Eden.

There is a thriving industrial industry in the Keep District, with the residential and service infrastructure required to keep up with its demand for workers. The community of citizens that live within the district see their role as vital to the long-term sustainability of New Eden; and are respected throughout the different regions as an important part of the region's survival.

Following the factional conflicts after the initial creation of the New Eden Safe Zone, a peace treaty was agreed to ensure the ongoing security of the Keep. The signatories of the treaty, which included the two largest factions of Animus and Prisma, agreed to allow KPCO to oversee the day-to-day management of the district and distribution of the resources received from the Keep to the different regions of New Eden.

NEW EDEN

The KPCO Board of Directors oversees the primary operations, with representatives from each major faction in New Eden present to ensure transparency; alongside a Council of Sentinels that represent the interests of the Keepers who feel it is their duty to protect the Keep and everything it creates.

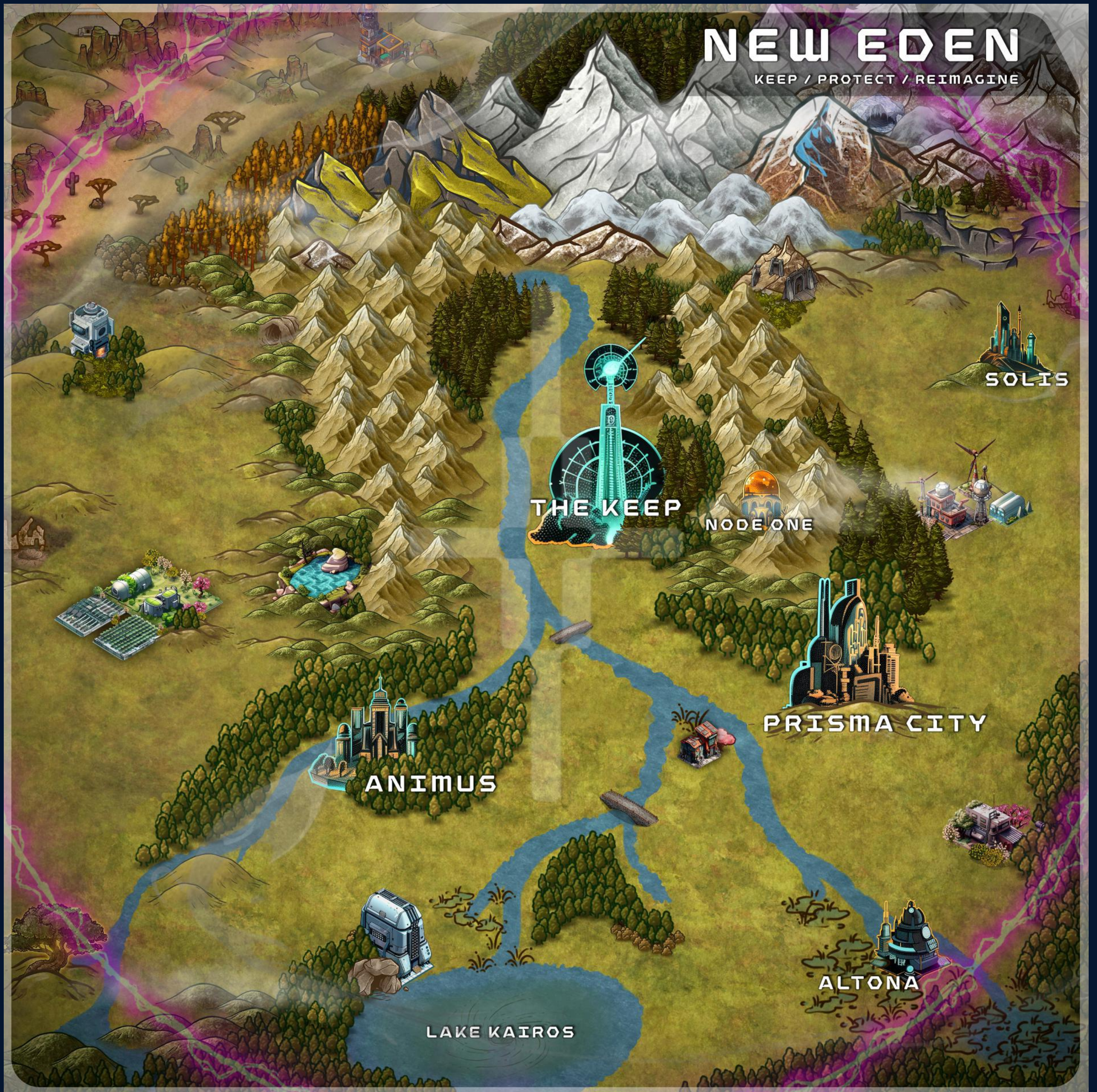
The Keep produces a number of resources, primarily a constant supply of Kai energy that is made available through a series of KPCO processing facilities that are attached to the central tower building. Other rare minerals and resources are provided through the Keep, the source of which remain unknown but the presence of them greatly needed in the relatively small footprint of the New Eden region.

These minerals provide enough materials for the current population of New Eden to continue to thrive, however are limited at different times for unexplained reasons which require careful management of their use. Under the terms of the peace treaty in place, all resources received are shared throughout New Eden on a per capita basis; ensuring equal access to the Keep's resources as required depending on population density of different regions.

Node One is a location that unifies opposing factions and provides a meeting point on the road between different regions. It is a place where Keepers who are just learning about their powers can come together and deepen their knowledge, forging bonds that will take them further into their journey.

Currently operating autonomously under the auspices of the PAMP AI, Node One has a strict neutrality code. Weapons are not allowed on site and are stored in lockers upon arrival.

WORLDMAP



Dynamic map of New Eden that will change as our world evolves, with many new locations and hidden secrets to be found. Map is not to scale.

Name:



Faction:

Class:

Str

Wis

Dex

Cng

Int

Cha



Charged



Wounds

Skills & Perks

Items



KPR NARRATIVE RULESET

Version 0.5

This is a living document and will be updated on a regular basis. For more information visit the KPR Discord server.

Thank you to all the Keepers that have contributed their own additional character illustrations and generated art, as credited.

KEEP PROTECT REIMAGINE