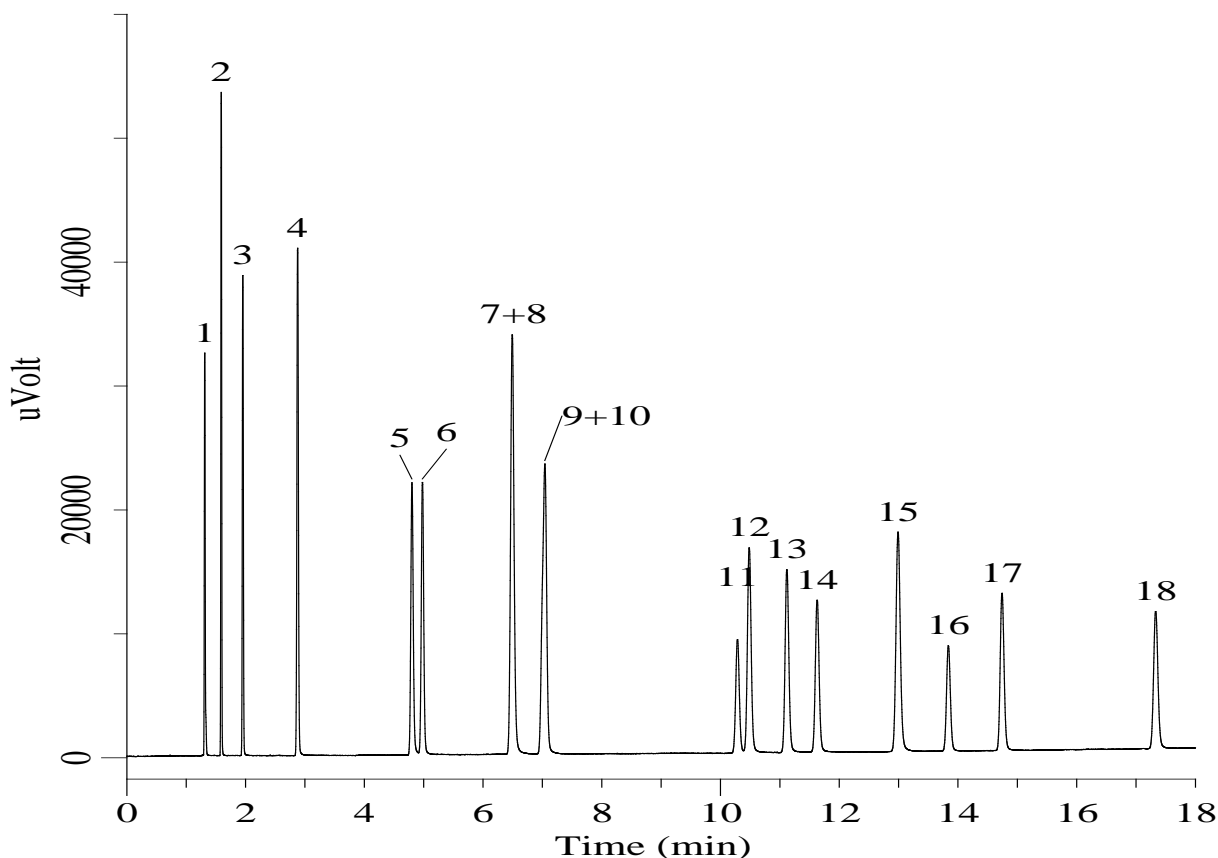


# InertSearch™ for GC

InertCap® Applications

## Hydrocarbons C1-C5

Data No. GA198-0410



### Conditions

**System** : GC/FID  
**Column** : TC-BOND Alumina/KCl  
0.53 mm I.D. x 30 m df = 10 µm  
**Col. Cat. No.** : 1010-40143  
**Col. Temp.** : 40 °C - 5 °C/min - 200 °C  
**Carrier Gas** : He 30 kPa  
**Injection** : Split flow 50 mL/min  
200 °C  
**Detection** : FID Range 10<sup>0</sup>  
200 °C  
**Sample Size** : 100 ppm Vd/Vd in He  
200 µL

### Analyte

1. Methane  
2. Ethane  
3. Ethylene  
4. Propane  
5. Cyclopropane  
6. Propylene  
7. Acetylene  
8. Isobutane  
9. Propadiene  
10. *n*-Butane  
11. *trans*-2-Butene  
12. 1-Butene  
13. Isobutene  
14. *cis*-2-Butene  
15. Isopentane  
16. Methylacetylene  
17. 1,3-Butadiene  
18. 2-Methyl-1-butene