



JANUARY 18-29, 2025

with optional Buenos Aires pre-tour
and Iguazú Falls post-tour

ANTARCTICA DISCOVERY

A MODERN POLAR EXPERIENCE



Orbridge



Dear Alumni and Friends,

We invite you to join us for a once-in-a-lifetime odyssey to the White Continent, where discovery and adventure converge, and polar wilderness awaits. Every moment of this specially curated itinerary immerses you in stark and surprising landscapes that define this breathtaking region.

Traverse Antarctica's icy expanse and witness the majestic beauty of untouched vistas—a true testament to the raw power of nature. This unforgettable journey offers up-close encounters with a diverse array of wildlife that call this pristine environment home—from penguins waddling along the snow to fur seals lounging on ice floes.

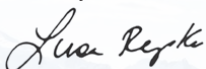
Your expedition vessel for this voyage is the modern, 190-guest *Ocean Victory*, a nimble craft designed specifically for polar cruising, featuring the unique agility to maneuver narrow channels and bays that are inaccessible to larger ships.

Aboard *Ocean Victory*, your home amongst the polar backdrop, peruse the extensive selection of books in the cozy library, master a workout in the well-equipped fitness room, or contemplate upon the unparalleled landscape from the outdoor viewing platform. Fine dining is a priority. Enjoy gourmet cuisine, and partake in an interactive dining experience where talented chefs demonstrate cooking on lava rock. In the evenings, retire to your plush stateroom—a sanctuary of tranquility.

This is a peak-season sailing for university and college alumni association travelers. With significant savings of more than \$1,000 per couple, we anticipate this program will fill quickly.

To reserve, visit tju.orbridge.com, call (866) 639-0079 or return the attached reservation form.

Sincerely,



Lisa Repko, JD
Vice President, Development & Planned Giving
Thomas Jefferson University

The 7th Continent | Itinerary and Highlights

Due to weather and ice patterns, the itinerary below may change in order to maximize wildlife and natural encounters.

- Day 1:** **EN ROUTE FROM U.S.** (Travel time from/to U.S. may take up to two days depending on flight schedules.)
- Day 2:** **ARRIVE IN USHUAIA, ARGENTINA** Unwind at an exceptional property within the Cerro Alarkén Natural Reserve. This evening become acquainted with fellow travelers during a welcome reception.
Overnight: Arakur Ushuaia Resort & Spa (R)
- Day 3:** **USHUAIA – EMBARKATION** Before boarding the ship in late afternoon, relax at the hotel or join an optional guided walk through Tierra del Fuego National Park.
Overnight: Ocean Victory (B,D)
- Days 4-5:** **DRAKE PASSAGE** During this two-day crossing take advantage of the ship's five-star amenities, including the observation lounge, library and outdoor bar and viewing platform.
Overnight: Ocean Victory (B,L,D daily)
- Days 6-9:** **SOUTH SHETLAND ISLANDS | ANTARCTIC PENINSULA** While the captain maximizes opportunities to anchor, the flexible daily itinerary includes a multitude of activities. Ocean Victory is well-equipped with Zodiac boats and a fleet of kayaks allowing you to discover remote coastlines and wildlife-rich areas up close. Expert guides, scientists and lecturers seamlessly enrich the learning experience throughout the tour.
Overnight: Ocean Victory (B,L,D daily)
- Days 10-11:** **DRAKE PASSAGE** As we retrace the route through the Drake Passage, gather on deck for a last look at the endless panorama of ice and sea—a serene setting for retrospection and camaraderie.
Overnight: Ocean Victory (B,L,D daily)
- Day 12:** **USHUAIA – DISEMBARKATION | DEPART FOR U.S.** After breakfast, transfer to the airport for flights home. (B)

(B = Breakfast, L = Lunch, D = Dinner, R = Reception)

Activity Level: This program offers a variety of activities, including shore excursions and small boat cruises. Guests should be sure-footed on stairs and ramps, be able to walk or hike at least one mile on uneven and slippery terrain.



What's Included

- 1 night luxury hotel accommodations (including breakfast) in Ushuaia prior to embarkation
- 9 nights aboard Ocean Victory, including all onboard meals (with select wines and beers at lunch and dinner)
- 24-hour self-service coffee and tea facilities onboard
- All scheduled landings and excursions listed in the itinerary (all subject to weather and ice conditions)
- An insulated waterproof/windproof expedition parka, which is yours to keep
- A pair of insulated rubber boots for shore landings for duration of the cruise (to be returned prior to disembarkation)
- Access to a photographic trip log (shared with guests after the voyage via an online link)
- All shipboard gratuities
- All luggage portorage
- All port fees
- Transfers from the hotel to the ship on embarkation day
- Airport transfers for guests arriving and departing during the suggested times

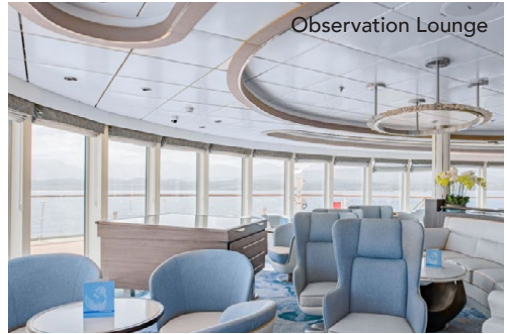
Important Note: Due to the remote location of this tour, medical insurance and medical evacuation insurance is required with a minimum coverage of \$200,000. Orbridge's Guest Services team can assist with questions regarding evacuation insurance.

Onboard Ocean Victory

Accommodating 190 guests, *Ocean Victory* boasts a delicate balance between modern refinement and responsible travel. From the vessel's energy-efficient systems to its minimized carbon footprint, every detail has been meticulously crafted to ensure a minimal impact on the environments we explore. This vessel holds the highest Polar code 6 and Ice class 1A designations, making it ideal for expedition cruising. Sturdy construction and a patented X-Bow design create excellent maneuverability and pleasant travel by reducing seasickness, noise and vibration. All cabins are well-appointed and feature exceptional space, amenities and ocean views.



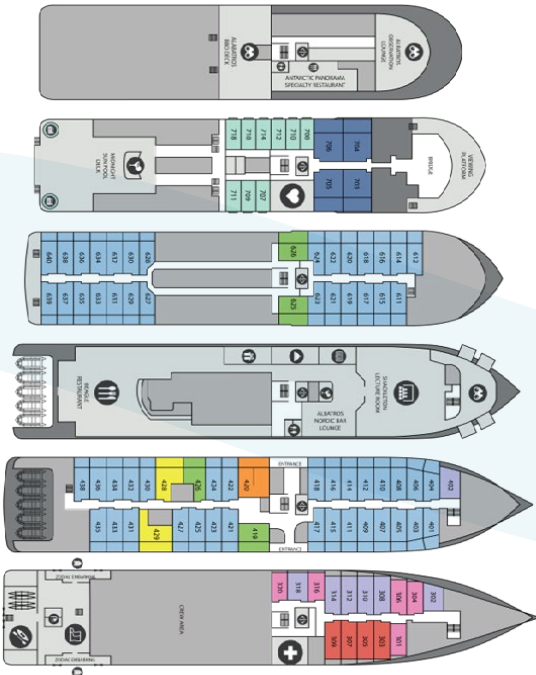
BBQ Deck



Observation Lounge



Dining





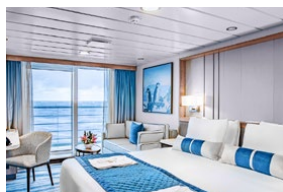
Albatros State Porthole (D)

Porthole window (located on Decks 3 and 4; approx. 236 sq.ft.)



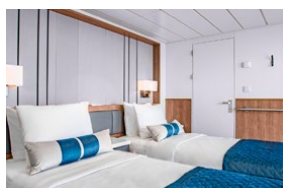
French Balcony Suite (E)

Floor-to-ceiling windows (located on Deck 7; approx. 172 sq.ft.)



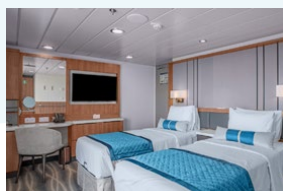
Balcony State (C)

Private balcony with floor-to-ceiling windows (located on Decks 4 and 6; approx. 258 sq.ft.)



Balcony Suite (B1)

Sitting area and private balcony with floor-to-ceiling windows (located on Deck 4; approx. 376 sq.ft.)



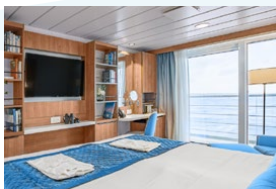
Junior Balcony Suite (B2)

Sitting area and private balcony with floor-to-ceiling windows (located on Decks 4 and 6; approx. 301 sq.ft.)



Junior Suite (A)

Additional sofa bed, sitting area and private balcony with floor-to-ceiling windows (located on Deck 7; approx. 452 sq.ft.)



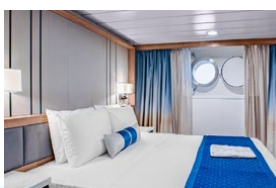
Premium Suite (PS)

Two-room suite, additional sofa bed, table and chairs and private balcony with floor-to-ceiling windows (located on Deck 4; approx. 484 sq.ft.)



Single (G)

Porthole window (located on Deck 3; approx. 193 sq.ft.)



Triple (F)

Porthole window with additional sofa bed (located on Deck 3; approx. 236 sq.ft.)

Optional Pre-Tour Buenos Aires

Experience the vibrant and sultry beauty of Buenos Aires, Argentina's sophisticated capital city. Rich historic sites, charming shops and restaurants, and welcoming locals create a notable setting for leisurely exploration.

Day +1: EN ROUTE FROM U.S. (*Travel time from U.S. may take up to two days depending on flight schedules.*)

Day +2: ARRIVE IN BUENOS AIRES, ARGENTINA
Settle in at the hotel with time to freshen up before gathering with fellow travelers for a gastronomic experience and live tango performance at one of Buenos Aires' most iconic theaters.
Overnight: Alvear Palace Hotel (D)

Day +3: BUENOS AIRES After breakfast set out on a panoramic tour to discover some of the city's most iconic neighborhoods and landmarks. See the Palermo district, Recoleta Cemetery and Plaza de Mayo. The afternoon and evening are at leisure to enjoy the city's many fantastic restaurants or the Buenos Aires nightlife.
Overnight: Alvear Palace Hotel (B, Snack)

Day +4: BUENOS AIRES | FLIGHT TO USHUAIA | MAIN PROGRAM BEGINS After breakfast, fly to Ushuaia to join the group for the main program. (B)

What's Included

- 2 nights at Alvear Palace Hotel (or similar) with breakfast each morning
- Special 3-course dinner and tango performance
- Panoramic city tour of Buenos Aires
- All gratuities and portorage
- All airport and hotel transfers for guests arriving and departing during the suggested times



Optional Post-Tour Iguazú Falls

Experience the thundering roar and huge clouds of spray from one of the most spectacular waterfalls in the world. Spanning more than two miles, Iguazú Falls is four times the width of Niagara Falls and includes 275 separate falls.



Day 12: **FLIGHT TO BUENOS AIRES** Arriving at Aeroparque Jorge Newbery take the group transfer to the hotel for a relaxing evening.
Overnight: Alvear Icon Hotel

Day 13: **FLIGHT TO IGUAZÚ FALLS | GUIDED TOUR**
After breakfast fly to Iguazú Falls for an afternoon of guided exploration around the falls. Your luxury hotel is the only property located within the park.
Overnight: Gran Meliá Iguazú (B,L,D)

Day 14: **IGUAZÚ FALLS TOUR** This morning enjoy a second guided visit to the falls. This afternoon enjoy free time on your own, or choose to join the optional Gran Aventura Safari Boat excursion (\$95 per person; can be booked on-site).
Overnight: Gran Meliá Iguazú (B)

Day 15: **IGUAZÚ FALLS | FLIGHT TO BUENOS AIRES | DEPART FOR U.S.** After breakfast, fly to Buenos Aires to connect with flights home. (B)

What's Included

- 1 night at Alvear Icon Hotel in Buenos Aires (or similar) and 2 nights at Gran Meliá Iguazú (or similar) with breakfast each morning
- 1 box lunch and 1 dinner
- 2 guided tours of Iguazú Falls
- All gratuities and portorage
- All airport and hotel transfers
- Internal round-trip airfare between Buenos Aires and Iguazú Falls



ANTARCTICA DISCOVERY

JANUARY 18-29, 2025

Buenos Aires Pre-Tour: January 16-19, 2025

Iguazú Falls Post-Tour: January 29 - February 1, 2025

Reserve by Credit Card:

Online: tju.orbridge.com

Phone: (866) 639-0079

Fax: (206) 452-5655

Reserve by Check:

Made payable to **Orbridge, LLC**

Mail to: Orbridge, P.O. Box 1376

Poulsbo, WA 98370

Stateroom Category	Standard Rate	Special Rate*
Albatros State Porthole (D)	\$11,499	\$10,995
French Balcony Suite (E)	\$13,499	\$12,995
Balcony State (C)	\$15,499	\$14,995
Balcony Suite (B2)	\$17,499	\$16,995
Balcony Suite (B1)	\$18,999	\$18,495
Junior Suite (A)	\$21,499	\$20,995
Premium Suite (PS)	\$23,999	\$23,495
Single (G)	\$17,499	\$16,995
Triple Porthole† (F)	\$9,399	\$8,995

Buenos Aires Pre-Tour: \$1,895* | Single Pre-Tour: \$2,295
Iguazú Falls Post-Tour: \$2,595* | Single Post-Tour: \$3,995

Rates are per person based on double occupancy except where noted as †Triple Porthole (per person rate; triple occupancy) or Single per person, in U.S. dollars.

GUEST INFORMATION:

Guest #1 Name (Title/Salutation): _____

Email: _____ Class Year: _____

Home Phone: _____ Alt. Phone: _____

Address: _____

City: _____ State: _____ Zip: _____

Guest #2 Name (Title/Salutation): _____

Email: _____ Class Year: _____

Home Phone: _____ Alt. Phone: _____

DEPOSIT PAYMENT:

Check ACH (Automated Clearing House) MasterCard/Visa American Express Discover

Card #: _____ Exp. Date: _____ CVV: _____

Name (as printed on card): _____

Billing Address (if different from above): _____

City: _____ State: _____ Zip: _____

CATEGORY SELECTION & DEPOSIT:

Category Preference: 1st choice _____ 2nd choice _____


_____ guests joining pre-tour (\$500/person) +

_____ guests joining program (\$2,500/person) +

_____ guests joining post-tour (\$500/person) = **TOTAL DEPOSIT: \$** _____

I/we have read, understand, and agree to the full Terms & Conditions at terms.orbridge.com; and I/we agree that Orbridge, LLC is authorized to charge my credit card above and/or take my/our deposit for this program.

Signature: _____ Date: _____

 Orbridge takes seriously the responsibility to minimize our global environmental impact. Each year we plant 100,000 trees in U.S. State Forests with afforestation needs as an ongoing initiative among our evolving sustainability efforts. Learn more at orbridge.com/going-green.

*Special group rate; limited offer. Airfare not included. Single and Triple availability limited. Pre-tour rate is per person based on double occupancy except where noted as Single, in U.S. dollars. Single availability limited. Airfare, including flights from Buenos Aires to Ushuaia, is not included. Post-tour rate is per person based on double occupancy, in U.S. dollars. Internal round-trip airfare between Buenos Aires and Iguazú Falls is included. General airfare, and the airfare for the internal flight from Ushuaia to Buenos Aires, is not included. **A complement to the educational component of this journey, Expedition Libraries are curated collections of useful resources and background reading tailored to this program. Place your deposit on or before the specified date, and one Expedition Library per room will be sent after receipt of final payment. Libraries may be purchased; please call for details.

CUT HERE



Jefferson
Thomas Jefferson University
HOME OF SIDNEY KIMMEL MEDICAL COLLEGE

Jefferson Office of Alumni Relations
1020 Locust St, Suite 210
Philadelphia, PA 19107

ANTARCTICA DISCOVERY

JANUARY 18-29, 2025

Special Alumni Rate:

Save more than **\$1,000** per couple

30-DAY REFUND GUARANTEE



What Guests Are Saying...

The ship was amazing. Just the right size for the expeditions and large enough to be comfortable. The crew on the ship was wonderful—room staff, hotel staff and expedition guides were all great!

~Alan R., Towson, MD

We felt that Orbridge went above and beyond our expectations. I was impressed with the concern of the staff for our safety at all times. I was also impressed that everyone seemed so interested and concerned that we have the best experience possible in all ways. The lectures were a wonderful addition. It allowed for meeting other people, as well as educating us on the continent, wildlife and many other aspects of Antarctica.

~Sarah & Frank L., Norwood, NC

We've done a lot of international traveling and, overall, I rate this as one of, if not the best, trips of my life!

~Art B., Tucson, AZ

FREE EXPEDITION LIBRARY
AN EXCLUSIVE EARLY
RESERVATION BONUS

Reserve by
August 23, 2024**

PRSR1 STD
U.S. POSTAGE
PAID
PERMIT NO. 825
SAN DIEGO, CA