



Surgical Esthetics™
passionate about regeneration

Regeneratives

By Dental Professionals

Bone

Membranes

Amnion

Sutures

Instruments



clinic@surgicalesthetics.com | www.surgicalesthetics.com

833-701-5245

©2024 Surgical Esthetics. All rights reserved.

Bone Particulates

Allograft	Volume	0.25-1.0mm	0.5-1.0mm	0.6-1.25mm	1-2mm
OSSIFY Mineralized Cancellous	0.5cc	BG-010050			BG-011050
	1.0cc	BG-010100			BG-011100
	2.0cc	BG-010200			BG-011200
	5.0cc	BG-010500			
OSSIFY Mineralized Cortical Cancellous	0.25cc			BG-012025	
	0.5cc			BG-012050	BG-013050
	1.0cc			BG-012100	BG-013100
	2.0cc			BG-012200	BG-013200
	5.0cc			BG-012500	
OSSIFY Mineralized Cortical	0.5cc	BG-014050			
	1.0cc	BG-014100			
	2.0cc	BG-014200			
OSSIFY Min/Demin Cortical Cancellous	0.5cc		BG-017050		
	1.0cc		BG-017100		
	2.0cc		BG-017200		
OSSIFY Demineralized Cortical	0.5cc	BG-020050			
	1.0cc	BG-020100			
	2.0cc	BG-020200			

Sponge Strips

Allograft	Size	SKU
OSSIFY Demineralized Sponge Strip	10x6x7	BG-024010
	20x6x7	BG-024020

Sponge Filler

Allograft	Volume	1-4mm
OSSIFY Demineralized Sponge Particulate	0.75cc	BG-025075
	1.0cc	BG-025100

Cortical Fibers

Allograft	Volume	SKU
OSSIFY Demineralized Cortical Fibers	0.5c	CF-028050
	1.0cc	CF-028100
	2.5cc	CF-028250
OSSIFY Demineralized Cortical Fibers w/ Canc. Chips	0.5cc	CF-029050
	1.0cc	CF-029100
	2.5cc	CF-029250

DBM Putty

Allograft	Volume	SKU
OSSIFY DBM Putty	0.5cc	P03005
	1.0cc	P03010
	2.5cc	P03025
OSSIFY DBM Putty w/ Canc. Chips	0.5cc	PC03105
	1.0cc	PC03110
	2.5cc	PC03125

Dermis

Allograft Products	Size	1.0-1.4mm Thickness	2.5-3.0mm Thickness
GingiDerm Acellular Dermis	10x10mm	GD10X10	GDP10X10
	10x20mm	GD10X20	GDP10X20
	10x40mm	GD10X40	GDP10X40
	20x40mm	GD20X40	GDP10X40

Amnion-Chorion

Allograft Products	Size	SKU
AmnioGain Amnion-Chorion Membrane	8x8mm	AGAC8x8
	12x12mm	AGAC12X12
	10x20mm	AGAC10X20
	15x20mm	AGAC15X20
	15x25mm	AGAC15X25
	20x30mm	AGAC20X30

Laminar Bone Sheets

Allograft	15x20mm	20x30mm
Demineralized Cortical Sheet	LBS15X20	LBS20X30

Pericardium

Allograft	10x10mm	15x20mm	20x30mm
OSSIFY Allograft Pericardium	OPCM10X10	OPCM15X20	OPCM20X30

Xenograft, Synthetic, Collagen

Xenograft	Volume	0.25-1.0mm
InterOss Xenograft Particulate	0.25g/0.5cc	IX-010025
	0.5g/1.0cc	IX-010050
	1.0g/2.0cc	IX-010100
	2.0g/4.0cc	IX-010200

Synthetic Membranes	Size	12x24mm	25x30mm
Cytoflex-SE PTFE Membrane	Single	PTFE12X24	PTFE25X30
	5 pack	PTFE12X24-5	PTFE25X30-5
Cytoflex Titanium Reinforced PTFE Membrane	Single	PTFE12X24TI	PTFE25X30TI

Xenograft Products	Size	SKU
CollaShield Collagen Membrane (3-4 mo. resorption)	15x20mm	CS15X20
	20x30mm	CS20X30
	30x40mm	CS30X40
CollaShield Extend Collagen Membrane (6-9 mo. resorption)	15x20mm	CSE15X20
	20x30mm	CSE20X30
	30x40mm	CSE30X40
CollaFill Collagen Plug**	10x20mm	CFP10
HealiAid Collagen Plug**	10x20mm	HACOLLP
	15x20mm	HACOLLPL

**10 plugs per box

Synthetic Graft	10x20mm	6x25mm
RegenaFill Bone Graft Plug*	RFP10x20	RFP6X25

*5 plugs per box

Sutures

Material	Needle	3/0	4/0	5/0	6/0
PTFE	FS-2	TE153019F4P			
	FS-3		TE154016F4P		
	P-3		TE154013F13M	TE155013F13M	
Silk	FS-2	SK163019F4P			
	FS-3		SK164016F4P		
Chromic Gut	FS-2	CC123019F4P			
	FS-3		CC124016F4P		
Polypropylene	FS-3			PM195016F4P	
	P-3			PM195013F13M	PM196013F13M
PGLA	FS-2	G183019F4P	G184019F4P		
	PS-2		G184019F13M		
	P-3			G185013F13M	
PGCL	FS-2	MO173019F4P	MO174019F4P		
	PS-2		MO174019F13M		
	P-3			MO175013F13M	

Instruments

Instrument Kits	SKU
Dr. Frawley Grafting Kit	FGK-Mini
Dr. Frawley Grafting Kit + Sinus Kit	FRAGRAFT-2
Dr. Frawley Sinus Kit	FGK-Sinus



Surgical Esthetics™

passionate about regeneration

Safety & Testing

Premium Quality Bone Allografts



Our Tissue Bank Quality Systems meet or exceed all:

- FDA Regulations
- AATB Standards
- Federally mandated Current Good Tissue Practice guidelines

Donor Eligibility Screening

- Strict quality systems and validated processes ensure patient safety from the initial donor consultation to the surgeon's transplantation of our allograft
- Comprehensive medical and social histories are thoroughly reviewed by qualified personnel on every donor
- All donations are reviewed for eligibility by a qualified and trained Medical Director Recovery technicians are trained by their respective agencies, receiving continuing education to assure consistent knowledge and application of our strict donor acceptance standards
- All our cadaveric tissue donations come from not-for-profit OPOs and recovery agencies

Bone Allograft Testing

- All tissue and blood samples are tested for infectious diseases by a CLIA Certified Lab Tissue is thoroughly tested for AIDS, using Nucleic Acid Testing (NAT by TMA), the newest and most reliable test to confirm the absence of HIV and HCV As an accredited member of the American Association of Tissue Banks (AATB), our tissue bank's testing and processing of donated tissue meet or exceed all FDA and AATB regulations, and are tested using FDA-required test kits Comprehensive battery of testing includes:
 - HBsAG: Hepatitis B Surface Antigen
 - HBcAb: Hepatitis B Core Antibody
 - HCVAb: Hepatitis C Antibody
 - HBV NAT RPR/STS or Equivalent: Syphilis
 - HCV NAT: Hepatitis C Virus
 - HIV NAT: Human Immunodeficiency Virus
 - HIV1/2/Ab: Human Immunodeficiency Virus Types 1/2 and O Antibody

Bone Allograft Sterilization

- Our allografts are terminally sterilized via low dose gamma irradiation Gamma irradiation dosage was determined by performing a VDMAX validation, and is verified on a quarterly basis Our allografts have a Sterility Assurance Level (SAL) of 10⁻⁶



Mineralized Cortical-Cancellous Mix

- Mixture mimics native composition of human bone Cancellous (~30–40%) provides ideal porosity for rapid clot formation
- Cortical (~60–70%) provides excellent space maintenance with slower resorption



Mineralized Cancellous

- Ideal inner surface area and porosity allows for immediate, stable clot formation
- Mineralized bone provides osteoconductive scaffold for efficient turnover to vital host bone
- Optimal particle structure and shape for natural and complete bone fill

Mineralized Cortical

- Mineralized bone provides osteoconductive scaffold for efficient turnover to vital host bone
- Cortical bone provides excellent space maintenance with slower resorption
- Optimal particle density for long-term volume maintenance



Mineralized – Demineralized / Cortical-Cancellous Mix

- 50% Cancellous / 50% Cortical
- 70% Mineralized / 30% Demineralized
- Osteoconductive matrix combined with osteoinductive potential
- Every allograft configuration in one graft
- One graft for every situation

Demineralized Cortical

- Demineralized bone can promote osteoinductive BMP activity
- Excellent for small periodontal defects
- Optimal particle density for clot stability

Demineralized Cancellous Sponge

- Demineralized bone promotes osteoinductive BMP activity for ectopic bone generation
- Compresses during placement, yet expands to maintain space
- Rapidly absorbs blood for quick, stable clot formation
- Unlike block grafts, Sponge Strip won't cause exposures or soft tissue perforation



Surgical Esthetics™
passionate about regeneration

OSSIFY® Bone Allograft

DBM Putty



Common Uses:

- Extraction ridge preservation
- Ridge augmentation
- Lateral sinus lifts
- Crestal sinus lifts

Advantages

- 100% human allograft
- 0% fillers or additives
- Ideal remineralization profile
- Available w/ bone graft



Configurations:

- OSSIFY DBM Allograft Putty, 0.5cc syringe (curved) - P03005
- OSSIFY DBM Allograft Putty, 1.0cc syringe (curved) - P03010
- OSSIFY DBM Allograft Putty, 2.5cc syringe (curved) - P03025
- OSSIFY DBM Allograft Putty w/ Min. Canc. Chips, 0.5cc syringe (curved) - PC03105
- OSSIFY DBM Allograft Putty w/ Min. Canc. Chips, 1.0cc syringe (curved) - P03110
- OSSIFY DBM Allograft Putty w/ Min. Canc. Chips, 2.5cc syringe (curved) - P03125





Surgical Esthetics™

passionate about regeneration

OSSIFY® Bone Allograft

DBM Cortical Fiber



Common Uses:

- Extraction ridge preservation
- Ridge augmentation
- Lateral sinus lifts
- Crestal sinus lifts

Advantages

- Unique scaffold for bone formation
- High surface area
- Shape conforming
- Available w/ particulate



Configurations:

- OSSIFY DBM Cortical Fiber, 0.5cc - CF-028050
- OSSIFY DBM Cortical Fiber, 1.0cc - CF-028100
- OSSIFY DBM Cortical Fiber, 2.5cc - CF-028250
- OSSIFY DBM Cortical Fiber with chips, 0.5cc - CF-029050
- OSSIFY DBM Cortical Fiber with chips, 1.0cc - CF-029100
- OSSIFY DBM Cortical Fiber with chips, 2.5cc - CF-029250



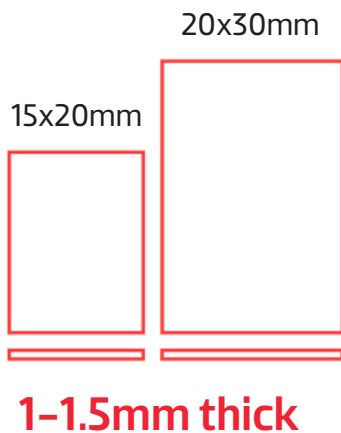
Surgical Esthetics™
passionate about regeneration

OSSIFY® Bone Allograft

LamBone Cortical Bone Sheet

Common Uses:

- Extraction socket preservation
- As a membrane for GBR
- Lateral sinus lifts
- Alternate to bone block when used with particulate
- Can be tacked or sutured



Advantages

- Osteoinductive potential
- Can be cut and shaped to size
- Very flexible but holds shape
- Biocompatible – 100% allograft

Configurations:

OSSIFY LamBone Demineralized Cortical Bone Sheet, 15x20mm – LBS15X20

OSSIFY LamBone Demineralized Cortical Bone Sheet, 15x20mm – LBS20X30



Surgical Esthetics™
passionate about regeneration

OSSIFY® Bone Allograft

DBM Sponge Block & Particulate

Common Uses:

- Extraction ridge preservation
- Vertical & horizontal ridge augmentation
- Advanced Guided Bone Regeneration
- Sinus augmentation
- Block graft alternative



Features & Benefits:

- 100% human allograft · 0% fillers or additives
- Will hold spacial dimension in a defect* Soft texture doesn't perforate soft tissue*
- Remineralizes in 6-9 months*
- Typically doesn't require fixation (when passive stability is achieved)*
- Can be trimmed to size

Sizes:

OSSIFY DBM Sponge Block, 10x6x7mm BG-024010

OSSIFY DBM Sponge Block, 20x6x7mm - BG-024020

OSSIFY DBM Sponge Particulate, 1.0-4.0mm, 0.75cc - BG-025075

OSSIFY DBM Sponge Particulate, 1.0-4.0mm, 1.0cc - BG-025100



Pre-op



3mos PO tunnel



3mos PO tunnel



6mos implant placement



Surgical Esthetics™

passionate about regeneration

OSSIFY Allograft

Pericardium Membrane

Features:

- Natural biocompatibility
- 16–24 week resorption time
- High inherent tensile strength
- Stretches and highly flexible
- Excellent as a barrier membrane for GBR procedures



Sizes:

OSSIFY Pericardium 10x10mm – OPCM10X10

OSSIFY Pericardium 15x20mm – OPCM15x20

OSSIFY Pericardium 20X30mm – OPCM20x30

OSSIFY Pericardium Membrane is a high-quality, biocompatible allograft membrane specifically designed for use in dental procedures such as GBR, periodontal regeneration, and soft tissue grafting. The membrane serves as a natural, durable barrier that promotes optimal healing and bone regeneration.



Surgical Esthetics™

passionate about regeneration

AmnioGain®

Amniotic Allografts



Versatility:

- Socket ridge preservation
- Sinus perforation repair
Implants
- Guided Bone Regeneration
- Guided Tissue Regeneration
- Wound or Defect Repair

Amnion + Chorion

- Flexible & Easy to Handle
- Strong & Protective Covering
- Natural Cushion
- Cellular Scaffold
- Immunogenic Properties
- Growth Factors & Cytokines
- Safe, Screened, Cleansed
- Shelf-stable

Sizes:

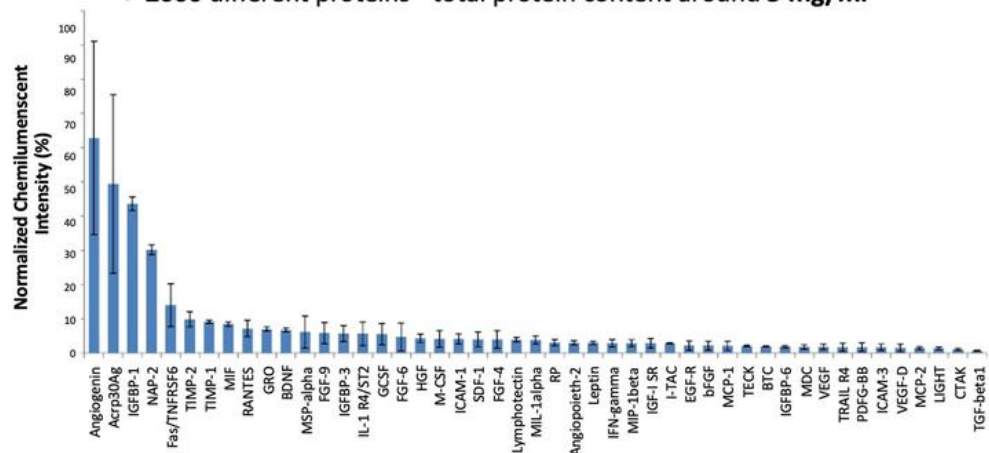
8x8mm	AGAC8X8
12x12mm	AGAC12X12
10x20mm	AGAC10X20
15x20mm	AGAC15X20
15x25mm	AGAC15X25
20x30mm	AGAC20X30

When Outcomes Matter... Biology Matters



Patented Process!

> 2600 different proteins - total protein content around 3 mg/ml





Surgical Esthetics™

passionate about regeneration

GingiDerm / Gingiderm Plus®

Acellular Dermis

Common Uses:

- Gingival recession
- Alternative to connective tissue graft
- Biotype conversion
- Gingival augmentation around implants
- Socket ridge preservation



Advanced Technology

- 1-1.4mm and 2.5-3.0mm thickness
- Absent of cellular components
- Preserved biological properties essential for regeneration
- Ideal thickness for hard- and soft-tissue procedures
- 100% human dermal tissue
- Orientation not required!
- There's no "right-side-up/down", for easy placement
- Ambient room temperature storage
- Promotes revascularization



Sizes:

Gingiderm

10x10mm	GD10x10
10x20mm	GD10x20
10x40mm	GD10x40
20x40mm	GD20x40

Gingiderm Plus

10x10mm	GDP10x10
10x20mm	GDP10x20
10x40mm	GDP10x40
20x40mm	GDP20x40



Surgical Esthetics™

passionate about regeneration

Regenafill®

Bone Graft Plug



.....It's so easy, it's
PLUG and play

Socket Grafting Made Simple

6 x 25 mm

Anteriors



RFP6X25 6 x 25mm (5-pack)



10 x 20 mm

Posteriors

RFP10X20 10 x 20mm (5-pack)

Mineral structure
similar to bone

80% mineral
20% Collagen

Cost Effective
bone graft

No membrane needed
in most cases

Stable clot for
excellent bone fill



Surgical Esthetics™

passionate about regeneration

HealiAid® & CollaFill® Collagen



Features & Benefits:

- Highly purified Type I bovine collagen
- High-density for added resilience
- Easily trimmed according to clinical needs
- Fully Absorbable
- Can easily be shaped by hand
- Extraction socket graft coverage
- Hemostasis
- 3rd molar extractions
- Soft tissue repair
- Free gingival graft donor sites



SKU

CFP10	CollaFill 10x20mm	10-pack
HACOLLP	HealiAid 10x20mm	10-pack
HACOLLPL	HealiAid 15x20mm	10-pack



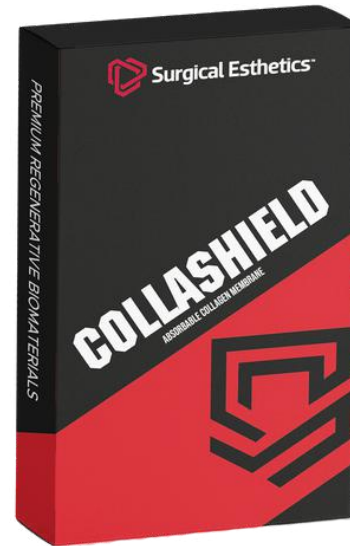
Surgical Esthetics™
passionate about regeneration

CollaShield®

Absorbable Membranes

Common Uses:

- Extraction ridge preservation
- Periodontal defect repair
- Vertical & horizontal ridge augmentation
- Bone regeneration around teeth and implants
- Sinus augmentation
- Membrane technique utilizing tacks



Features & Benefits:

- Highly purified porcine peritoneum tissue
- Excellent biocompatibility
- Easily trimmed & adapted to defect site
- Mechanically strong, yet drapable
- Fully Absorbable (~3-4months)
- Cell Occlusive - inhibits undesired epithelial ingrowth
- Can be tacked or sutured in place



15x20mm
CS15x20



20x30mm
CS20x30



30x40mm
CS30x40





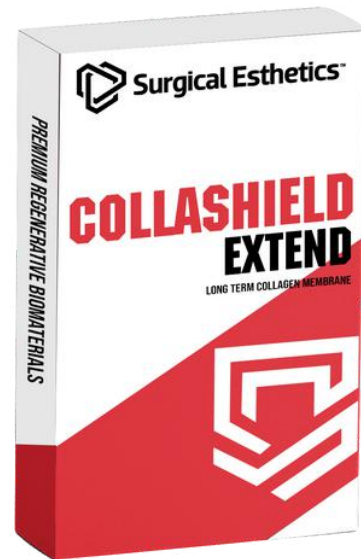
Surgical Esthetics™
passionate about regeneration

CollaShield Extend®

Absorbable Membranes

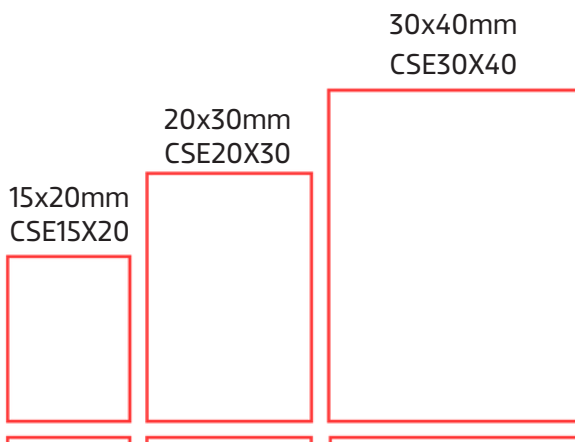
Common Uses:

- Extraction ridge preservation
- Performs well without primary closure
- Long resorption time
- Vertical & horizontal ridge augmentation
- Bone regeneration around teeth and implants
- Sinus augmentation



Features & Benefits:

- Highly purified intact porcine dermal tissue
- Excellent biocompatibility
- Easily trimmed & adapted to defect site
- High mechanical strength
- Fully Absorbable (~6-9 months)
- Cell Occlusive - inhibits undesired epithelial ingrowth
- Can be tacked or sutured in place



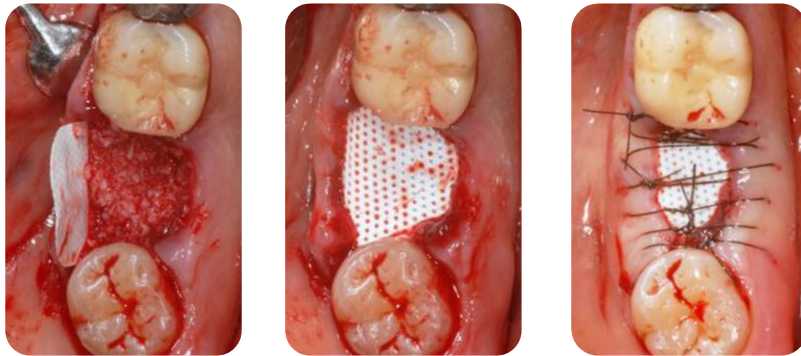
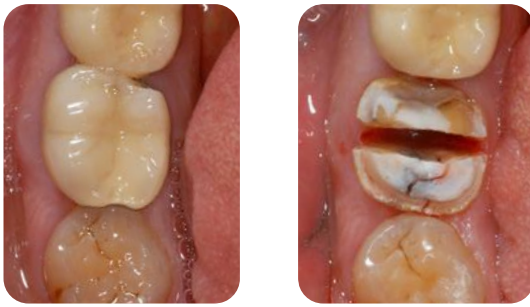


Surgical Esthetics™

passionate about regeneration

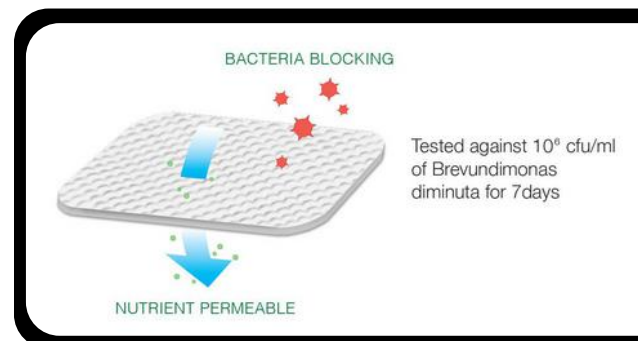
Cytoflex-SE® PTFE

Non-Absorbable Membranes



Common Uses:

- Extraction ridge preservation
- Periodontal defect repair
- Guided bone regeneration (GBR)
- Guided tissue regeneration (GTR)



Features & Benefits:

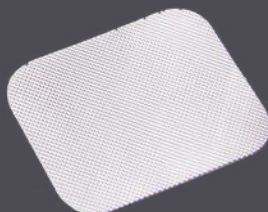
- Easily trimmed & adapted to tissue contours
- Microporous structure inhibits bacterial penetration
- Allows interstitial fluid flow for improved healing
- Textured surface holds membrane position during healing
- Can be tacked in place

Cytoflex-SE®



12x24mm

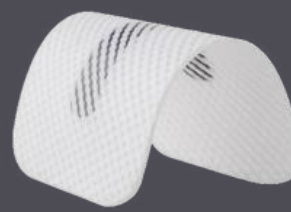
(Single: PTFE12x24)
(5-pack: PTFE12x24-5)
(10-pack: PTFE12x24-10)



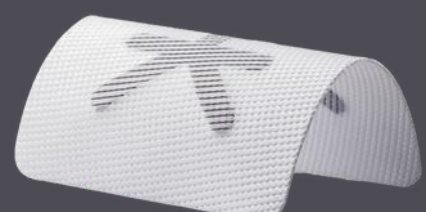
25x30mm

(Single: PTFE25x30) (5-pack: PTFE25x30-5)

Cytoflex® Titanium Reinforced



12x24mm
(PTFE12x24Ti)



25x30mm
(PTFE25x30Ti)







Surgical Esthetics™
passionate about regeneration

Premium Sutures

Absorbable & Non-Absorbable



			
FS-2 Reverse Cutting 19mm 3/8 Circle	FS-3 Reverse Cutting 16mm 3/8 Circle	P-3 Premium Reverse Cutting 13mm 3/8 Circle	PS-2 Premium Reverse Cutting 19mm 3/8 Circle

Material	Needle	3/0	4/0	5/0	6/0
PTFE	FS-2	TE153019F4P			
	FS-3		TE154016F4P		
	P-3		TE154013F13M	TE155013F13M	
Silk	FS-2	SK163019F4P			
	FS-3		SK164016F4P		
Chromic Gut	FS-2	CC123019F4P			
	FS-3		CC124016F4P		
Polypropylene	FS-3			PM195016F4P	
	P-3			PM195013F13M	PM196013F13M
PGLA	FS-2	G183019F4P	G184019F4P		
	PS-2		G184019F13M		
	P-3			G185013F13M	
PGCL	FS-2	MO173019F4P	MO174019F4P		
	PS-2		MO174019F13M		
	P-3			MO175013F13M	



Surgical Esthetics™

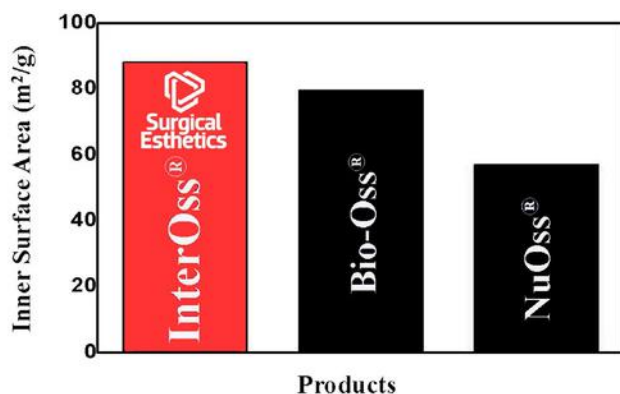
passionate about regeneration

InterOss® Bone Xenograft

Bovine Particulate

Indications:

- Sinus elevation
- Periodontal defect repair
- Vertical & horizontal ridge augmentation
- Advanced guided bone regeneration (GBR)



InterOss

is a natural hydroxyapatite bone grafting material derived from a closed, BSE-free Australian herd. The highly purified osteoconductive material is produced from natural bone through a multi-step purification process, and yields a nanocrystalline structure similar to mineralized human bone. The macroporous structure, with excellent inner surface area, promotes cellular ingrowth while fostering a favorable resorption and dissolution profile.



.25-1mm Particles	IX-010025	InterOss Anorganic Cancellous Xenograft, .25-1mm, .25g / 0.5cc
	IX-010050	InterOss Anorganic Cancellous Xenograft, .25-1mm, 0.5g / 1.0cc
	IX-010100	InterOss Anorganic Cancellous Xenograft, .25-1mm, 1.0g / 2.0cc
	IX-010200	InterOss Anorganic Cancellous Xenograft, .25-1mm, 2.0g / 4.0cc

Sterilization: InterOss is sterilized using gamma irradiation. Appropriate aseptic technique should be observed in all procedures, and packaging should be inspected prior to use, to ensure that the sterile seal has not been compromised.

Storage: InterOss should be stored in a dry, clean, ventilated area at ambient temperature 59-77°F

Ref: https://www.surgicalesthetics.com/inteross-xenograft_study_1-surface-area-only/



Surgical Esthetics

passionate about regeneration

Graft & Implant Surgery

Dr. Frawley Grafting Instrument Kit

Incise & Release



Adjustable Scalpel Handle #S1192



Microblade Handle #S1280



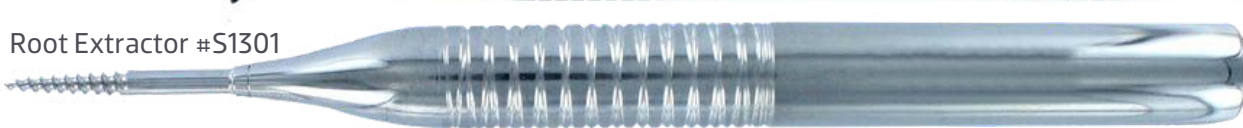
Molt #S1117



Microperiosteal Elevator #S1018T



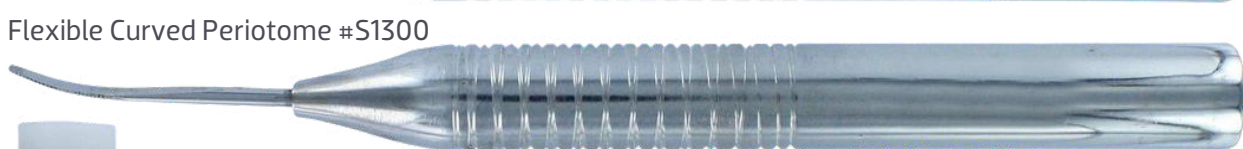
Woodson Elevator #S1109



Root Extractor #S1301



Flexible Periotome #S1300C



Flexible Curved Periotome #S1300



Mallet #S1127



Minnesota Retractor #S1180

Extraction
Aids



Serrated Scissor #S1179TC



Cassette
#S1261

Serrated Curettes Set of 4: 2.4mm-5mm (#S1110S, S1111S, S1112S, S1114S)



Site
Preparation

Regenerative Material
Placement



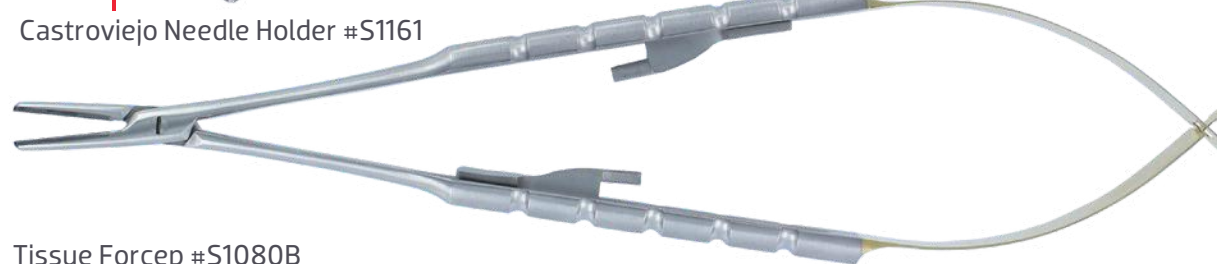
Bone Syringe #S1060

Bone Condenser #S1038



Spoon Curette #S1113

Castroviejo Needle Holder #S1161



Tissue Forcep #S1080B

Corn Suture Forcep #S1081

Suturing

Upgrade with the DR. Frawley Sinus Kit



(sku FGK-Sinus)

Osteotomes: 2-5mm: #S1320C, S1321C, S1322C, S1323C, S1324C, S1325C
Sinus Gold 1: #S1505G
Sinus Gold 2: #S1506G
Sinus Membrane Detacher: #S1309

Build

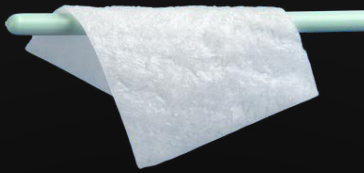
Protect

Secure



Bone Allograft

+

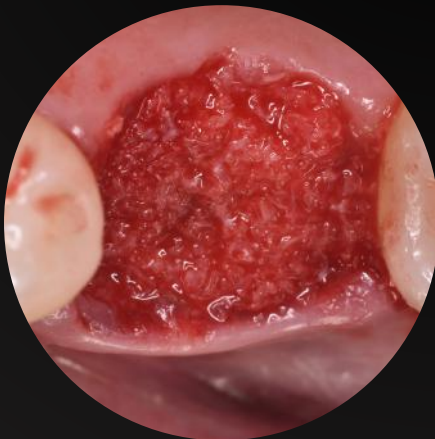
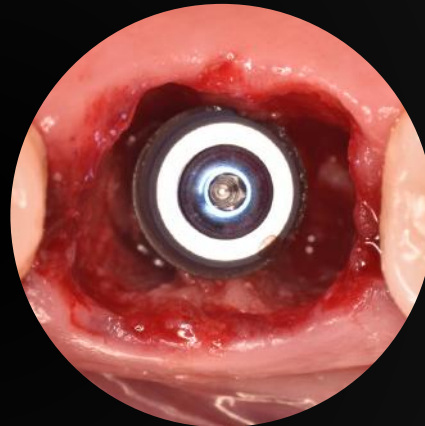


Membrane

+



Suture



Surgical Esthetics™



We are truly passionate about regeneration. Surgical Esthetics was founded by dentists to serve dentists. We understand the daily challenges dentists face in providing care to their patients. We also understand the helpful role a company can play in supporting dentists in delivering that care.

Everything we do is with dentists and patients in mind, not shareholders. We strive to provide the highest quality dental regenerative materials coupled with supportive education and world class customer service. The value we provide to dentists extends far beyond the products we sell.

Dr. Shawn Frawley

President

747-788-6449

sfrawleydds@surgicalesthetics.com



Justin Pugmire

Director of Operations

818-514-9794

justinp@surgicalesthetics.com