



# Catalog

2025

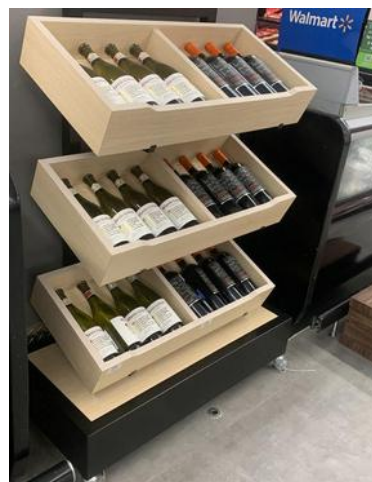
# Our Clients



Walmart



# Innovative furniture





# Who is GID?

**GID** began operations in 1994 as a manufacturer of furniture for prisons, hospitals, laboratories, industrial kitchens, offices and special designs.

In 1996, it received recognition in the sixth Latin American Applied Design Competition for the manufacture of the “Combo” (integrated toilet and sink), designed in stainless steel.

Since 2005, **GID** has been certified with ISO 9001.



# What does GID manufacture?

**GID is a company with a strong presence in the market, specializing in the manufacture of resistant and functional solutions, including security equipment, clinical furniture, architectural structures and customized elements for various applications. Our track record covers projects on a global scale, highlighting our participation in the adaptation of penitentiary centers and hospitals in different countries. At a national level, we have developed innovative products for prison facilities, clinics and architectural spaces, including metal cladding, structural ceilings and other custom components. Each piece we produce is made with highly durable materials, such as stainless steel and carbon steel, with specific finishes that guarantee resistance and aesthetics. In addition, we adapt to the needs of each project, offering customized dimensions and tailored solutions to optimize functionality and performance. If you want to add additional information or make adjustments, let me know and we will perfect it.**





# INNOVATIVE ELEMENTS



**Display rack**



**Display rack**



**Bookcase for offices**



**Water  
dispenser**



**Bookcase with 5 shelves**

Dimensions can be adjusted according to project. Made of stainless steel or carbon steel.



**Bed with integrated locker**



**Charging station**



**Suitcase carrier cart**

Dimensions can be adjusted according to project. Made of stainless steel or carbon steel.



# ESTANTES PARA SUPER MERCADO



**Multiple support table**



**Lego-style rack for sauces and  
spices**



**Fast food table**



**Support table for bakery and  
pastry shop**

Dimensions can be adjusted according to project. Made of stainless steel or carbon steel.





**Triple wine rack**



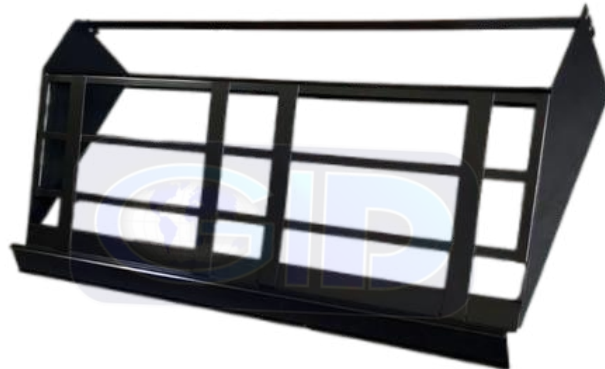
**Skeleton for a bakery cabinet**



**Double wine rack**



**Transport truck for pick up**

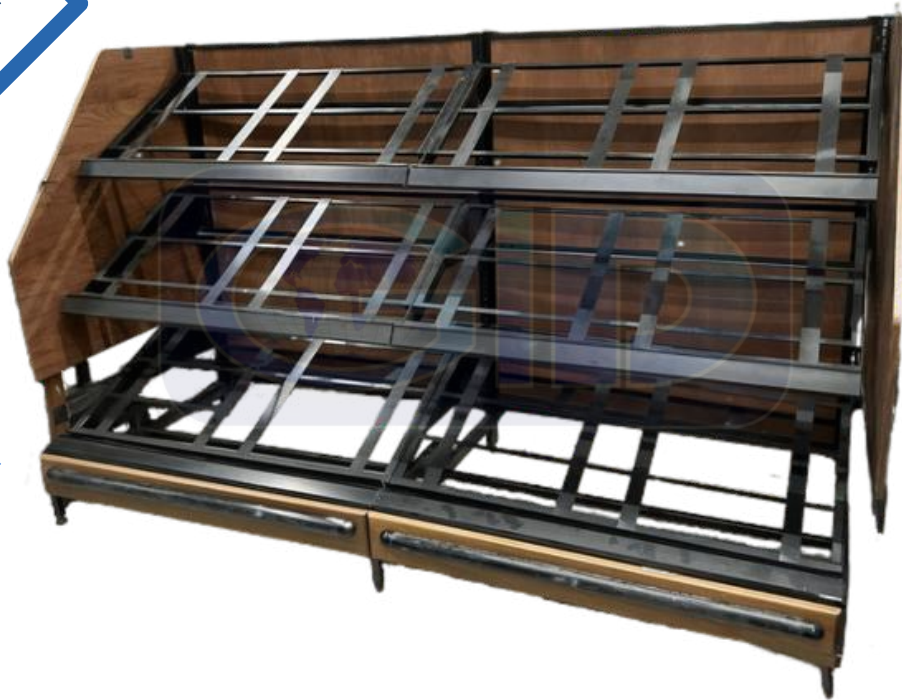


**Supermarket shelf**

Dimensions can be adjusted according to project. Made of stainless steel or carbon steel.

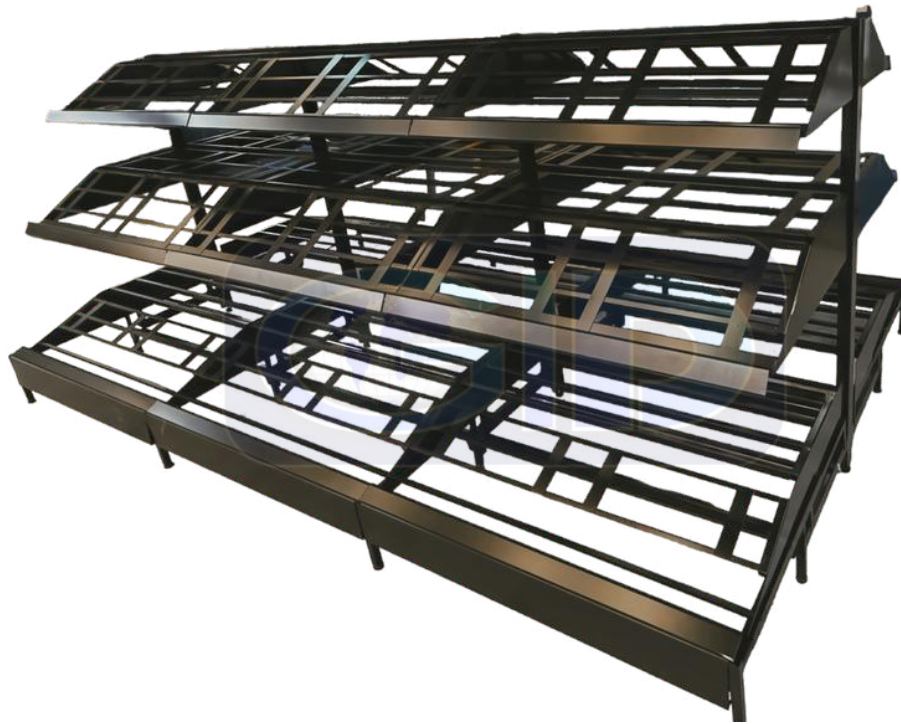


# ISLAND FOR FRUITS AND VEGETABLES



Dimensions can be adjusted according to project. Made of stainless steel or carbon steel.





Dimensions can be adjusted according to project. Made of stainless steel or carbon steel.





**"DESIGN THAT FLOWS,  
PERFORMANCE THAT LASTS."**

# Sanitary Hand Wash Basins for Fast Food



Pedal Washbasin



Fixed Sink in Fast Food

Rolling washbasin



Dimensions can be adjusted according to project. Made of stainless steel or carbon steel.



# DRINKING FOUNTAINS



**BG2SAI-16+LLB-40**



**PTBGAMAI+LLB-24**



**PTBGAMAI+REF-44**



**PTBGAMAI+REF-42**

Dimensions can be adjusted according to project. Made of stainless steel or carbon steel.



**BDR1EAI-43**



**BDR1EAI+LLB-45**



**BDR3EAI+LLB+LUV-49**



**BDR1ECR+LLB-47**



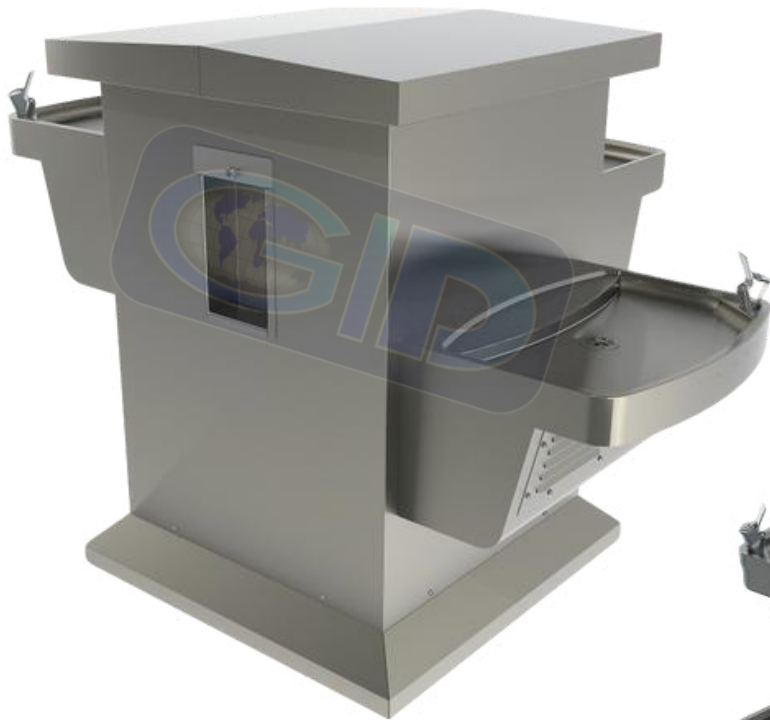
**BDR2ECR+LLB-37**



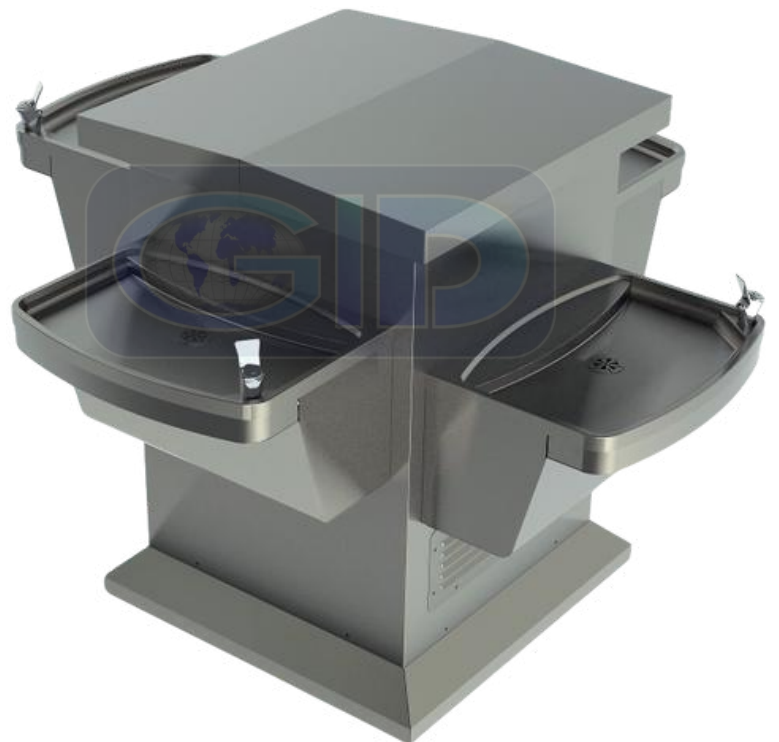
**BDR3ECR+LLB-39**

Dimensions can be adjusted according to project. Made of stainless steel or carbon steel.

**PTB2AI+REF-27**



**PTBG3ELBAI+REF-53**



**PTBG4EAI-09**

Dimensions can be adjusted according to project. Made of stainless steel or carbon steel.



**PTBGDPAUAI+LLB-32**



**PTBGDPAUAI-03**



**PTBGSPAI-02**



**PTBGSPAI+LLB-30**

Dimensions can be adjusted according to project. Made of stainless steel or carbon steel.

# SCHOOL DRINKING FOUNTAINS



**3S SC-01**



**4S SC-02**



**7S SC-03**



**8S SC-04**

Dimensions can be adjusted according to project. Made of stainless steel or carbon steel.



# Workstations



**Administrator Workstation**



**Module for link**



**Dividing module**



**Workstation for an advisor**



**Double workstation for operator**

# RESIDENTIAL EQUIPMENT

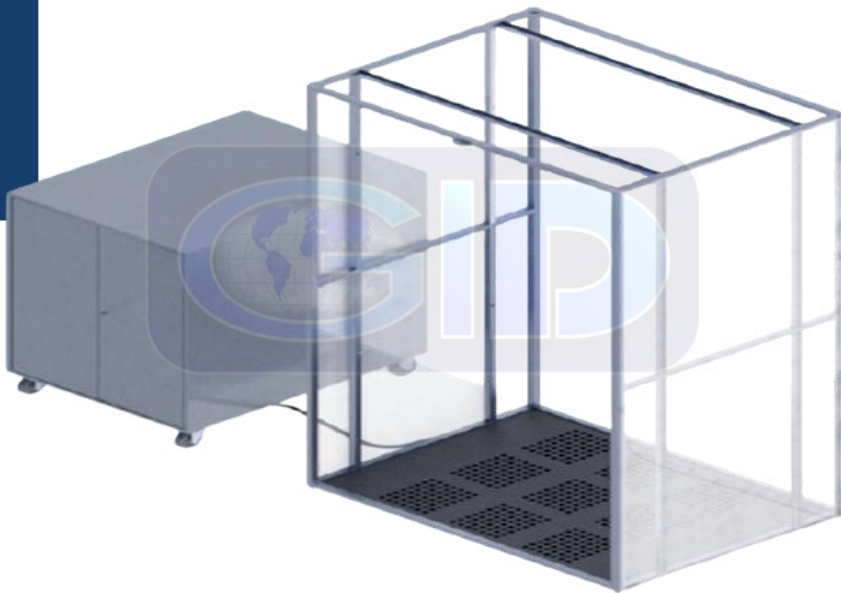


Dimensions can be adjusted according to project. Made of stainless steel or carbon steel.



# DISINFECTION

Disinfection tunnel



Disinfection arch

GIDSA disinfection tunnel



Dimensions can be adjusted according to project. Made of stainless steel or carbon steel.



**Gel dispenser with pedal for advertising space**



**Pedal gel dispenser**



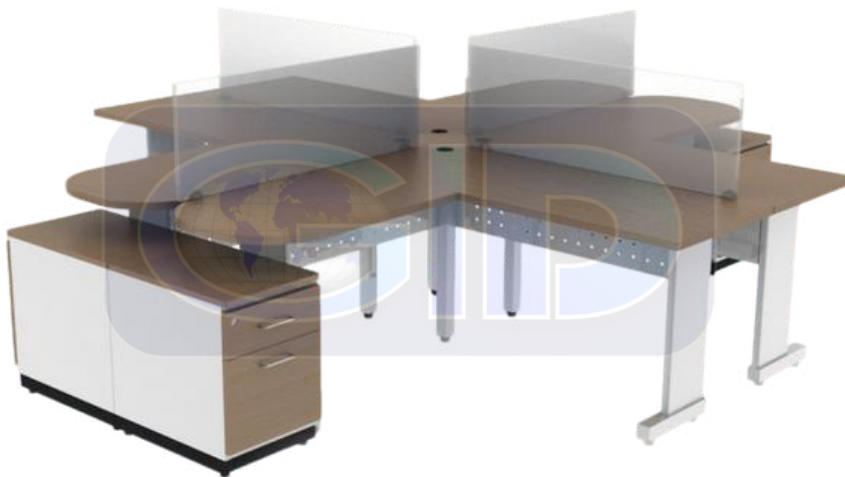
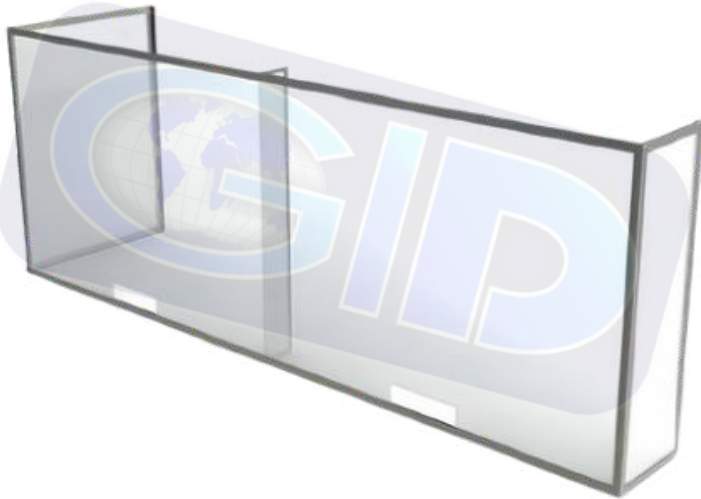
**Simple gel dispenser**

Dimensions can be adjusted according to project. Made of stainless steel or carbon steel.





# PARTITION PANEL



**Comprehensive office module**

Dimensions can be adjusted according to project. Made of stainless steel or carbon steel.





## Quality and Innovation in Furniture

At GID, we combine quality and innovation to design and manufacture high-performance hospital, prison and architectural furniture. With high-strength steel and custom finishes, we offer durable and safe solutions, adapted to each project. We guarantee functionality, design and cutting-edge technology in each piece.

# DISCOVER MORE



Hospital furniture

Vandal-proof furniture



Architectural Designs





# GET A QUOTE WITH US



**(55) 5236 5639**



**www.gidsa.com**



**edgarez@gidsa.com**



**sairaalvarez@gidsa.com**



**israelnunez@gidsa.com**



**ie\_reyes@gidsa.com**



**@GIDSAMX**



**@mxgidsa**

**You will find the best quality on the market here.**