

# With ColorVu, You'll Enjoy

Images shot by ColorVu camera were with supplementary light OFF

## True Color Information

- Accurate color rendering
- Excellent performance in low-light environments



Unable to identify color



Accurate color

## More Details

- Clearly captured color information
- Richer details compared to black and white imaging



Lost details



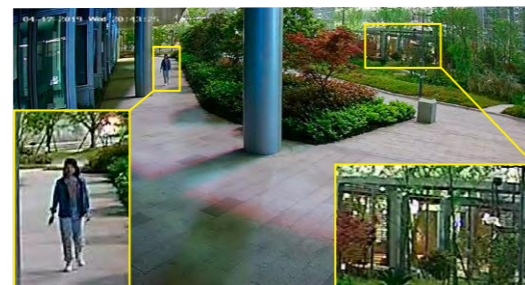
Rich color-related details

## Better Visual Experience

- Balanced brightness
- F1.0 super aperture and advanced sensor guarantee realistic rendering



Blurry



Sharp

# 24/7 Colorful Imaging

View in Color,  
Even in Darkness

**ColorVu**  
Turbo HD Camera



**Headquarters**  
No.555 Qianmo Road, Binjiang District,  
Hangzhou 310051, China  
T +86-571-8807-5998  
overseasbusiness@hikvision.com



**HIKVISION**  
www.hikvision.com

# Combining Great Technologies for Greater Image Quality

**F1.0 Super Aperture**  
Collects more light to produce brighter image.

**Friendly Lighting**  
Soft and warm supplemental light works to guarantee colorful images when in zero-light environments.



**Advanced Sensor**  
Vastly improves the utilization of available light.

## ColorVu Camera

Bullet



**DS-2CE10DF0T-F**  
2 MP ColorVu Mini Bullet Camera

- 24/7 color imaging with F1.0 aperture
- 0.001 lux
- DWDR, 3D DNR technology
- Smartlight 20 m
- IP67
- Metal casing
- 2.8, 3.6 or 6 mm lens



**DS-2CE10DF0T-PF**  
2 MP ColorVu Mini Bullet Camera

- 24/7 color imaging with F1.0 aperture
- 0.001 lux
- DWDR, 3D DNR technology
- Smartlight 20 m
- IP67
- Plastic casing
- 2.8, 3.6 or 6 mm lens



**DS-2CE12DF0T-F**  
2 MP ColorVu Bullet Camera

- 24/7 color imaging with F1.0 aperture
- 0.001 lux
- DWDR, 3D DNR technology
- Smartlight 40 m
- IP67
- Metal casing
- 2.8, 3.6 or 6 mm lens

Turret



**DS-2CE70DF0T-MF**  
2 MP ColorVu Turret Camera

- 24/7 color imaging with F1.0 aperture
- 0.001 lux
- DWDR, 3D DNR technology
- Smartlight 20 m
- IP67
- Metal casing
- 2.8, 3.6 or 6 mm lens



**DS-2CE70DF0T-PF**  
2 MP ColorVu Turret Camera

- 24/7 color imaging with F1.0 aperture
- 0.001 lux
- DWDR, 3D DNR technology
- Smartlight 20 m
- Plastic casing
- 2.8, 3.6 or 6 mm lens



**DS-2CE72DF0T-F**  
2 MP ColorVu Turret Camera

- 24/7 color imaging with F1.0 aperture
- 0.001 lux
- DWDR, 3D DNR technology
- Smartlight 40 m
- IP67
- Metal camera body, plastic enclosure
- 2.8, 3.6 or 6 mm lens

## DVR



**DS-7204HUHI-K1/2**  
4-Channel DVR

- HDTVI / AHD / CVI / CVBS / IP Video Inputs
- H.265Pro+ / H.265Pro / H.265
- 5 MP @ 12 fps (CH1: supports 8 MP @ 8fps)
- Maximum 8 IP Camera Inputs (up to 8 MP)



**DS-7208HUHI-K1/2**  
8-Channel DVR

- HDTVI / AHD / CVI / CVBS / IP Video Inputs
- H.265Pro+ / H.265Pro / H.265
- 8 MP @ 8fps / 5 MP @ 12 fps
- Maximum 16 IP Camera Inputs (up to 8 MP)



**DS-7216HUHI-K2**  
16-Channel DVR

- HDTVI / AHD / CVI / CVBS / IP video inputs
- H.265Pro+ / H.265Pro / H.265
- 8 MP @ 8fps / 5 MP @ 12 fps
- Maximum 32 IP Camera Inputs (up to 8 MP)



**DS-7204HQHI-K1**  
4-Channel DVR

- HDTVI / AHD / CVI / CVBS / IP Video Inputs
- H.265Pro+ / H.265Pro / H.265
- 4 MP Lite @ 15 fps / 1080p @ 15fps
- Maximum 6 IP Camera Inputs (up to 6 MP)



**DS-7208HQHI-K1/2**  
8-Channel DVR

- HDTVI / AHD / CVI / CVBS / IP Video Inputs
- H.265Pro+ / H.265Pro / H.265
- 4 MP Lite @ 15 fps / 1080p @ 15fps
- Maximum 12 IP Camera Inputs (up to 6 MP)



**DS-7216HQHI-K1/2**  
16-Channel DVR

- HDTVI / AHD / CVI / CVBS / IP Video Inputs
- H.265Pro+ / H.265Pro / H.265
- 4 MP Lite @ 15 fps / 1080p @ 15fps
- Maximum 24 IP Camera Inputs (up to 6 MP)

## AcuSense DVR



**iDS-7204HUHI-M1(2)/S**  
4-Channel AcuSense DVR

- Deep learning-based facial detection or behavior analysis
- 1-ch human face capture or 4-ch false alarm reduction
- HDTVI / AHD / CVI / CVBS / IP Video Inputs
- H.265Pro+ / H.265Pro / H.265
- 5 MP @ 12 fps (CH1: supports 8 MP @ 8fps)
- Maximum 8 IP Camera Inputs (up to 8 MP)



**iDS-7208HUHI-M1(2)/S**  
8-Channel AcuSense DVR

- Deep learning-based facial detection or behavior analysis
- 1-ch human face capture or 4-ch false alarm reduction
- HDTVI / AHD / CVI / CVBS / IP Video Inputs
- H.265Pro+ / H.265Pro / H.265
- 8 MP @ 8fps / 5 MP @ 12 fps
- Maximum 16 IP Camera Inputs (up to 8 MP)



**iDS-7204HQHI-M1/S**  
4-Channel AcuSense DVR

- Deep learning-based facial detection or behavior analysis
- 1-ch human face capture or 2-ch false alarm reduction
- HDTVI / AHD / CVI / CVBS / IP Video Inputs
- H.265Pro+ / H.265Pro / H.265
- 4 MP Lite @ 15 fps / 1080p @ 15fps
- Maximum 6 IP Camera Inputs (up to 6 MP)



**iDS-7208HQHI-M1(2)/S**  
8-Channel AcuSense DVR

- Deep learning-based facial detection or behavior analysis
- 1-ch human face capture or 4-ch false alarm reduction
- HDTVI / AHD / CVI / CVBS / IP Video Inputs
- H.265Pro+ / H.265Pro / H.265
- 4 MP Lite @ 15 fps / 1080p @ 15fps
- Maximum 12 IP Camera Inputs (up to 6 MP)



**iDS-7216HQHI-M1(2)/S**  
16-Channel AcuSense DVR

- Deep learning-based facial detection or behavior analysis
- 1-ch human face capture or 4-ch false alarm reduction
- HDTVI / AHD / CVI / CVBS / IP Video Inputs
- H.265Pro+ / H.265Pro / H.265
- 4 MP Lite @ 15 fps / 1080p @ 15fps
- Maximum 24 IP Camera Inputs (up to 6 MP)