

SHOWCASE PORTFOLIO



**ALVEAR** ARQUITECTOS

A consolidated track record shows the experience of more than thirty years.



## Juan Carlos Alvear

*Architect / Master of Science in Structural Engineering & Construction Management / MBA Founding Partner and Director*

Mr. Alvear is the founding partner of ALVEAR ARQUITECTOS and brings to the firm a vast experience in diverse type and size of architectural projects. Since obtaining his Bachelor in Architecture from Universidad Iberoamericana in 1994 (with higher honours), Mr. Alvear has gained professional experience from projects of different categories: Hospitality, Residential, Mixed Use, Educational, Health, Corporate, Commercial, Government, Industrial and Master Planning. Mr. Alvear holds a Master of Science in Structural

Engineering & Construction Management from the University of Newcastle upon Tyne in the UK, and a Master in Business Administration (MBA) from the University of Bath, also in the UK. Based on his professional experience Mr. Alvear believes that successful projects are the result of good planning and teamwork. Mr. Alvear is committed to achieving excellence, to which he suggests high interaction between Architects, Clients, Consultants and Contractors. Before the foundation of the firm Mr. Alvear was Project Director for the NIZUC project in Cancun (formerly for Becker Arquitectos and later on for Brisas already as ALVEAR ARQUITECTOS). Before Nizuc, he was HOK Design Director for the global firm's Mexico City office. Alvear has previously served in design and project management positions, through employment or affiliations with several prominent firms,

including Buro Happold Consulting Engineers, England; WAT&G (Wimberly Allison Tong & Goo), California; and the Mexico practices of GICSA (Grupo Inmobiliario Cababie); PLAN Arquitectos; and KMD (Kaplan-McLaughlin-Diaz). Mr. Alvear has given lectures in architectural design since year 2000, at Universidad Iberoamericana, Tec de Monterrey and Anahuac University in México; and abroad at the ETH in Zurich, the Liechtenstein Institute of Technology and Jonköping University in Sweden. He has gained national and international recognition and project design awards in Mexico, Italy, Brazil, USA, Costa Rica, South and North America and recently a world wide award. His work has been published in national and international journals. Professional, personal, architectural and academic extensive global travel - builds primarily into his humanistic life, as well as into a designer with a broader perspective and knowledge.

# Partners

---



## Ricardo García

*Engineer-Architect*

---

With more than 25 years of experience in the field, Ricardo García González graduated from the Higher School of Engineering and Architecture of the IPN. He has participated in planning, programming, and coordinating multiple projects in both public and private sectors. Within the public sector he has participated in the coordination of the renovation of the Oaxtepec complex for the IMSS, changes of headquarters and remodeling for the Secretary of Tourism, Fonatur, Petroleum Institute, Senate of the Republic and National Indigenous Institute. Within the public sector, he has worked as a designer and coordinator for companies such as

Frisa in the subdivision and urbanization of land within the Lomas Country and Bosque Real golf clubs; with the firm A+A Arquitectos in the project, coordination and construction of commercial premises, remodeling of changing rooms of the Palacio de los Deportes and residential projects; and as a project manager for Citi-Banamex participating in the creation and remodeling of more than 50 branches, offices and Call Centers, among others. After completing a master's degree in Emotional Ecology, he joined Alvear Arquitectos in 2016.

# Partners

---



## Rubén Nesme

*Architect / Master in Urban Planning*

Rubén Nesme is an Architect graduated from Tecnológico de Monterrey with a Master's degree in Urban and Regional Planning from the Università Iuav di Venezia, Italy. Rubén has collaborated in important architecture firms in Mexico, Spain and the United States, such as Springall + Lira Arquitectos in Barcelona, G Tects in New York, Callison in Mexico and Seattle, and currently in Alvear Arquitectos in Mexico, where he is partner and Design Director. He has also collaborated with urban planning agencies in Venice, Italy and Praia, Cape Verde.

Rubén has participated in the design of architectural and urban projects in Mexico, Italy, Cape Verde, Spain, Romania, the United States, the United Arab Emirates, China, Costa Rica and Belize, where he has developed multiple projects in different architectural typologies such as: hospitality, residential, commercial, mixed-uses, cultural, public spaces; as well as urban master plans and master plans for hospital complexes. Rubén has also been a professor and consultant for the Tec de Monterrey since 2009, where he teaches the Project workshop in different semesters. As a Tec consultant, he has participated in the Accessibility Master Plan for the 3 Mexico City campuses, the Academic Support for the Reconstruction of the Mexico City Campus after the 2017 earth-

quake, the elaboration of the Guidelines for the reconstruction of two schools in the State of Mexico, and the updating of Public-School Prototypes in the State of Mexico, with the Alberto Bailleres Foundation and the State of Mexico's Institute of Educational Facilities.

Rubén has also participated as instructor in the Course "Complete Streets", organized for different municipalities by the German Cooperation Agency GIZ, SEDATU, SEMARNAT, Steer and UNAM.

Rubén speaks 7 languages.

# Partners

---



## Gerardo Godoy

*Engineer-Architect*

---

Gerardo Godoy Martínez graduated from the Higher School of Engineering and Architecture of the IPN, Tecamachalco, Mexico. He has worked in different firms such as Fryso Arquitectos, Proyectos y Cálculos Arquitectónicos, Soluciones en Ingeniería y Construcción, Proyectos Arquitectónicos UMA, Segura Soluciones Integral SA de CV, Andamios Atlas SA de CV, Ingeniería en Redes Electrónicas, and Telmex. These jobs allowed him gain knowledge and experience of the construction and project

management methodologies, which are reflected in his work.

Gerardo joined Alvear Arquitectos in 2012, and today he takes care of most of the office management as well as consultants coordinations.

# The team









## Work philosophy

*Based on his professional experience Mr. Alvear believes that successful projects are the result of good planning and teamwork. Mr. Alvear is committed to achieve excellency, to which he suggests high interaction between Architects, Clients, Consultants and Contractors.*

Alvear has previously served in design and project management positions, through employment or affiliations with several prominent firms, including Buro Happold Consulting Engineers, England; WAT&G (Wimberly Allison Tong & Goo), California; and the Mexico practices of GICSA (Grupo Inmobiliario Cababie); PLAN Arquitectos; and KMD (Kaplan-McLaughlin-Diaz).

*Workshop with the architect Ryūe Nishizawa*



*Workshop with the architect Glenn Murcutt*

## Speaker and Professor

*Mr. Alvear has given lectures in architectural design since year 2000, at Iberoamericana University, Tec de Monterrey and Anahuac University in México; and abroad at the ETH in Zurich, the Liechtenstein Institute of Technology and Jonköping University in Sweden.*

---

Our level of participation in each project is defined by the following icons



Conceptual Design



Schematic Design



Design Development



Construction Documents



Construction Management

# Hotel Design

---





## Nizuc Spa



Currently awarded and operating as one of the best hotels in the world. The project had two stages: the first stage with a Mexican real estate investment group, which later sold the property to a second hotel investment group.

We had the opportunity to collaborate on this project from A to Z, during the two stages. We were involved for more than five years from the initial designs to its inauguration. It is proudly a Mexican iconic project, with the highest global comfort standards. After seven years of having been inaugurated, it is already a worldwide reference in terms of luxury and hospitality.



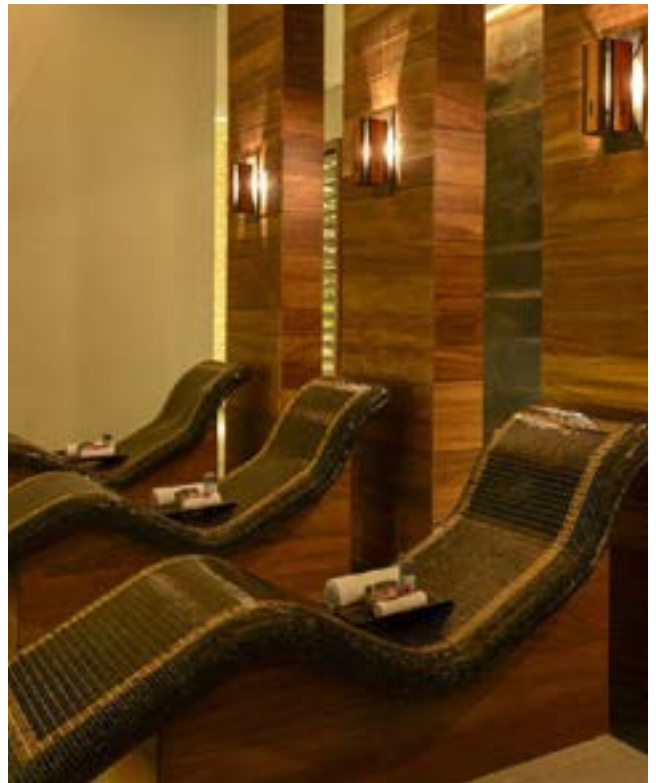


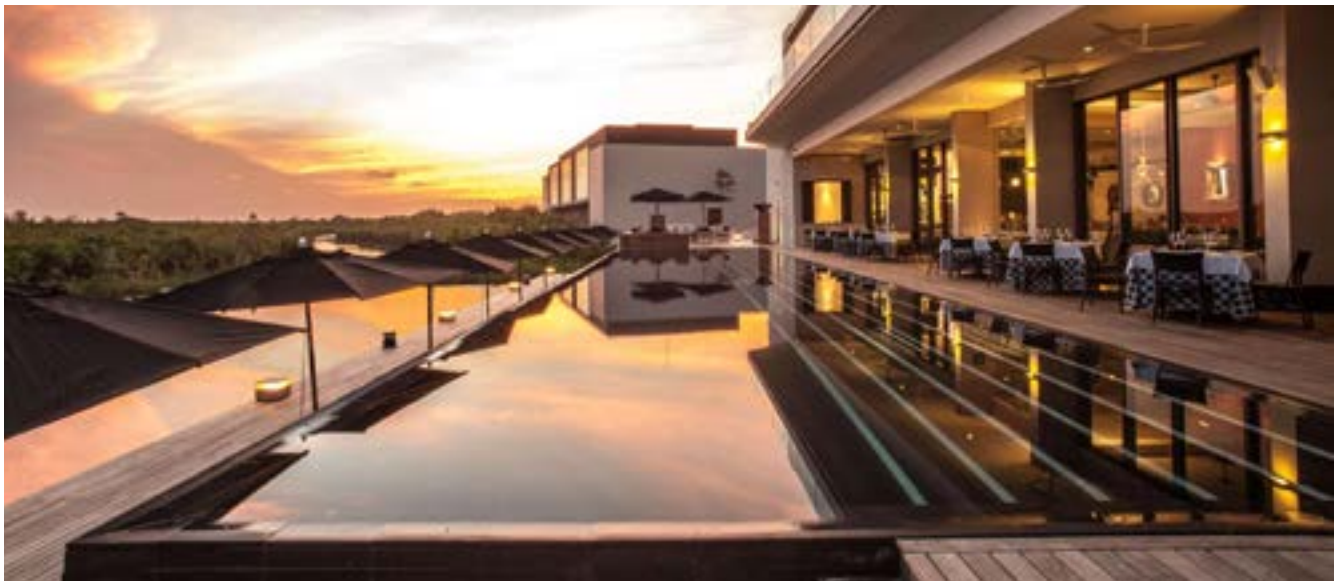












---

## Marquis Los Cabos

Thanks to the call for a contest by Marquis, they invited Jacobo Micha from Archetonic; he in turn invited us (Juan Carlos Alvear, Homero Hernández and Víctor Márquez) as collaborators.

Having won the competition, we developed the project, with collaboration of other architects such as Omar Parra (RIP), Juan Fabila and many other collaborators in engineering and consulting.

The conceptual project proposal has a spectacular lobby with a large arch; and the proposal that made us win the contest was that we managed to ensure that all the rooms had ocean views.







---

## Secrets



Secrets Maroma Beach Riviera Cancun is a AAA 5 diamond hotel and has 12 outdoor pools, 9 different restaurants and 1 cafeteria. This all-inclusive resort offers a variety of activities, including dance classes, beach and pool volleyball, water aerobics, and archery, among others.

For the year 2018, it was proposed to carry out an expansion and remodeling of this complex, adding new blocks of rooms, pools, villas, restaurants and other facilities of entertainment. Looking for an elegant design language that corresponds and fits into the quality of this resort complex.











## Glamping Huasca de Ocampo

The Hotel Huasca de Ocampo is a project located in Hidalgo, Mexico. The hotel is designed by the concept of Glamping, a new global trend in the hospitality business that combines the experience of camping in the wild with all the luxury and comfort of the best hotels. This new concept of Glamping is growing worldwide because it is a really interesting way of living the nature and at the same time, living in a space of high quality in terms of comfort and design.









---

## Spa Belize



The Spa is located in Belize. It is an important part of a resort master plan that seeks to meet the highest quality standards in terms of luxury. The project's premise and concept is to use certain elements of Mayan architecture, such as the Sacbé, the cenotes, and sacred geometry. The volumes that make up the spa, seek to blend into the privileged nature of the island context.











## ME Cancún



ME Cancun is a lifestyle resort located on the spectacular beach of the Cancun touristic zone, very close to the main shopping centers, first-class restaurants, trendy places and nightclubs in the area.

In 2017, an expansion and remodeling of this hotel was proposed, adding new blocks of rooms, pools, villas, restaurants and other entertainment facilities. Achieving a dignified design that corresponds to the quality of this hotel complex.



---

## IXEC



SPA Ixtapan is a project developed in Ixtapan de la Sal, Mexico. The project is mainly focusing on the user and the going through the experiences that a spa has. The main element of these experiences is the Dornbracht, Effegibi and DURAVIT pieces. The project has seven experiences that are the Hamman, aqua moon, sauna, leg shower, blue moon, horizontal shower and vertical shower. Each experience was thought to be in specific order to provide a comfortable and memorable transition between each space.







## Cosmopolitan by the Sea

Cosmopolitan by the Sea "Resort and Residence" will be the newest development in Ensenada, Baja California, Mexico near the USA southern border. This 6,000 sqm mixed-use development will contemplate a 50-room hotel and a residential two towers development with 170 apartments. The two, three or four bedroom apartments are designed in a modular prototype, which allows different layouts. The program is complemented by amenities such as a social hall, pools, spa, fitness club, padel court, driving golf range, and a yacht dock. It will have a roof-top restaurant with amazing ocean views.









# Residential Design

---







## Tepoztlán House

At the invitation of Marco Rocha, we collaborated to build a residence, of approximately 1,000 to 1,100 square meters of construction on a 5,000-meter site, in which the builder was Octavio Rocha. Local materials or materials of common use in the town of Tepoztlán were used, such as stone, adobe and quarry. Likewise, some materials that are normally made of wood were replaced by steel elements, which gained in longevity and construction structure. The house has 5 bedrooms, 3 for the family and two for visitors; service bedroom, guard room, game room, dining room, kitchen, outdoor dining room, cinema, barbecue etc. This project won the "Ex-Aequo, Categoria Edificações" Award by the 1997 International Architecture Bienal in Sao Paulo, Brazil"







---

## M House



M House is based on a very particular concept and the special requests of the client. This residential project was developed with a large format of materials, such as stone finishes and polished concrete, as well as oak and walnut wood finishes that give a great warmth and a feeling of tranquility in the interior of the residence. Lastly, the use of Duovent window frames was chosen for acoustic insulation of the rooms and in addition, to integrate the interior spaces of the house into the terraces and gardens.

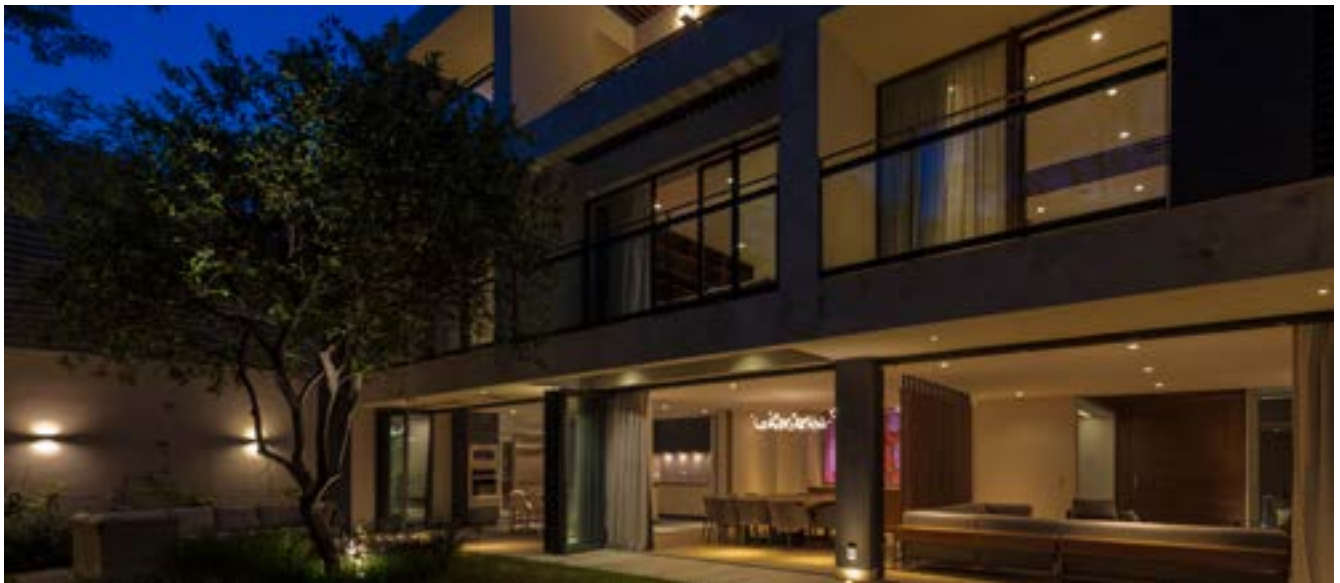
















---

## Moliere Building

This project is composed of 7 apartments that were designed in a very complicated site, since the lot measures were 10 meters of front by 40 meters of depth, and the apartments had to have a good size according to its location. This was achieved with a structural and homogeneous system with boxes, modules and some bridges. In addition, the vertical circulation was sent to the front in order not to lose space. The structure is made of concrete and some wood and brick on the facades.







## Penthouse Loft

This 62 sqm Mini Loft - Penthouse is located on a 20th floor, with beautiful views of the entire city. This tiny apartment has all the technology and amenities for a comfortable and futuristic operation. It has screens in each space to connect wireless in videoconferences, as well as a sound system and a generalized automation in all controls. The entire loft works with telephone applications. The systems are digital and hydroelectric, this means, to avoid the consumption of gas due to risk and space. This apartment will work as a hotel suite with all the comforts that it brings.





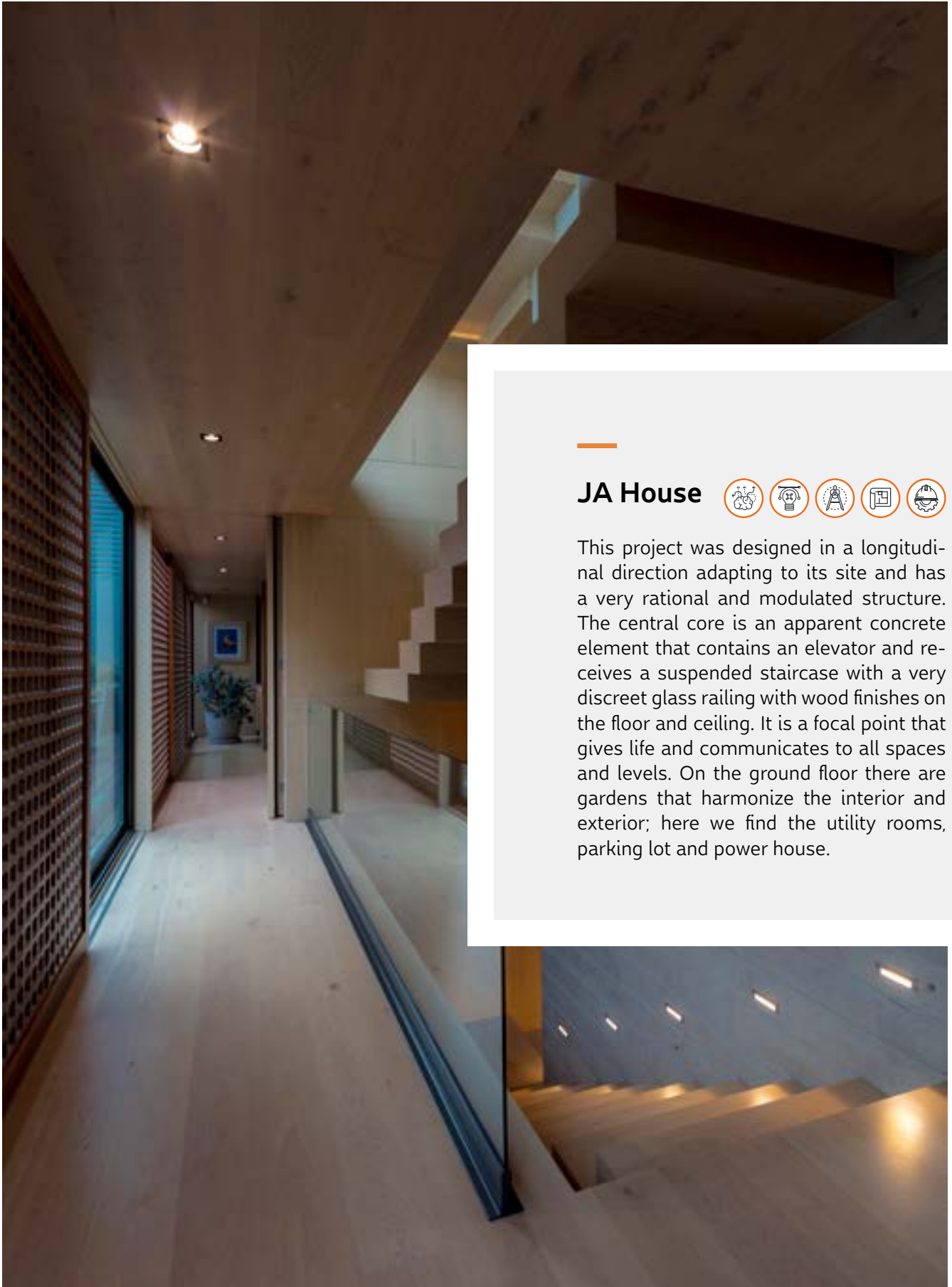












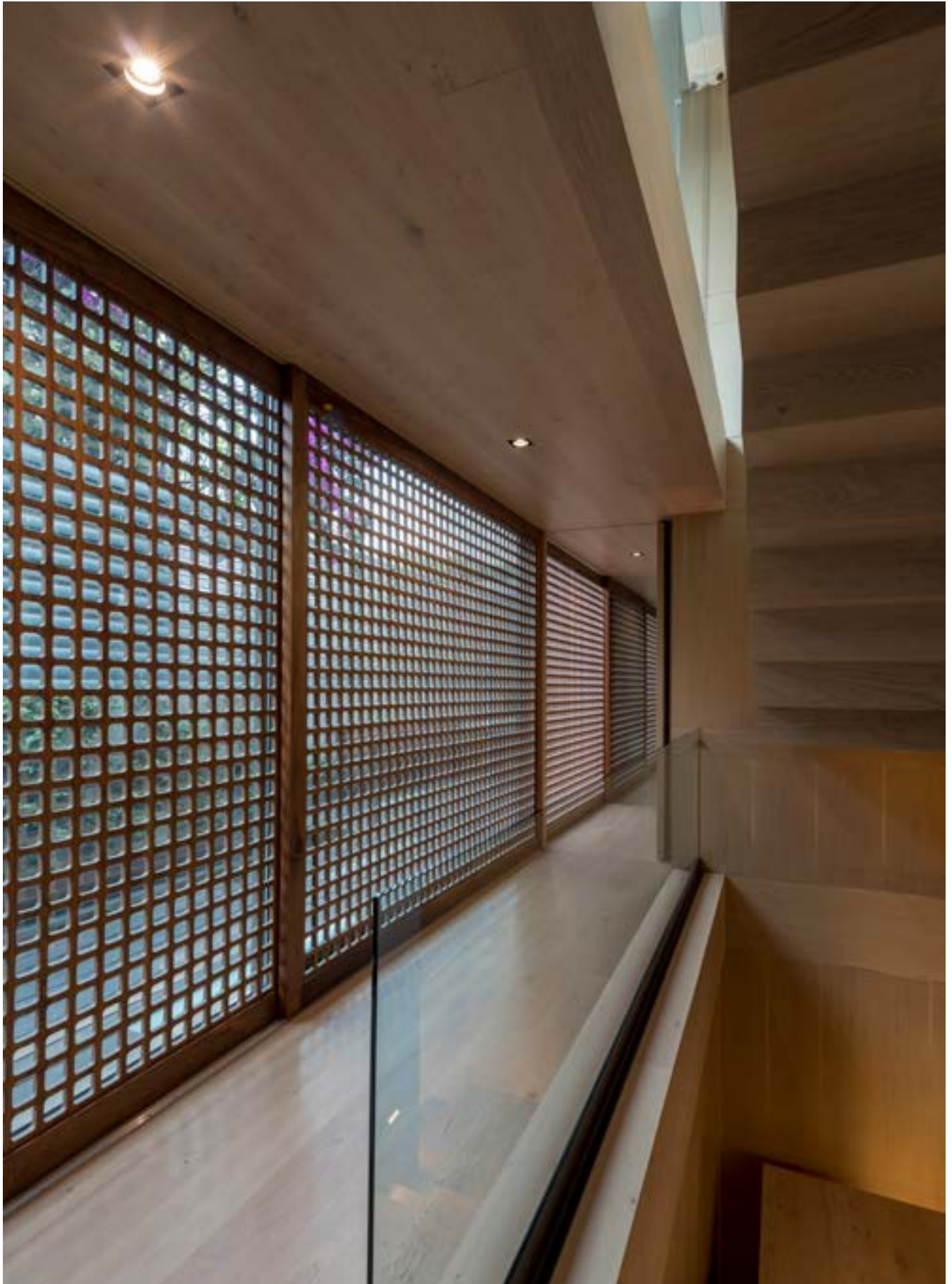
---

## JA House

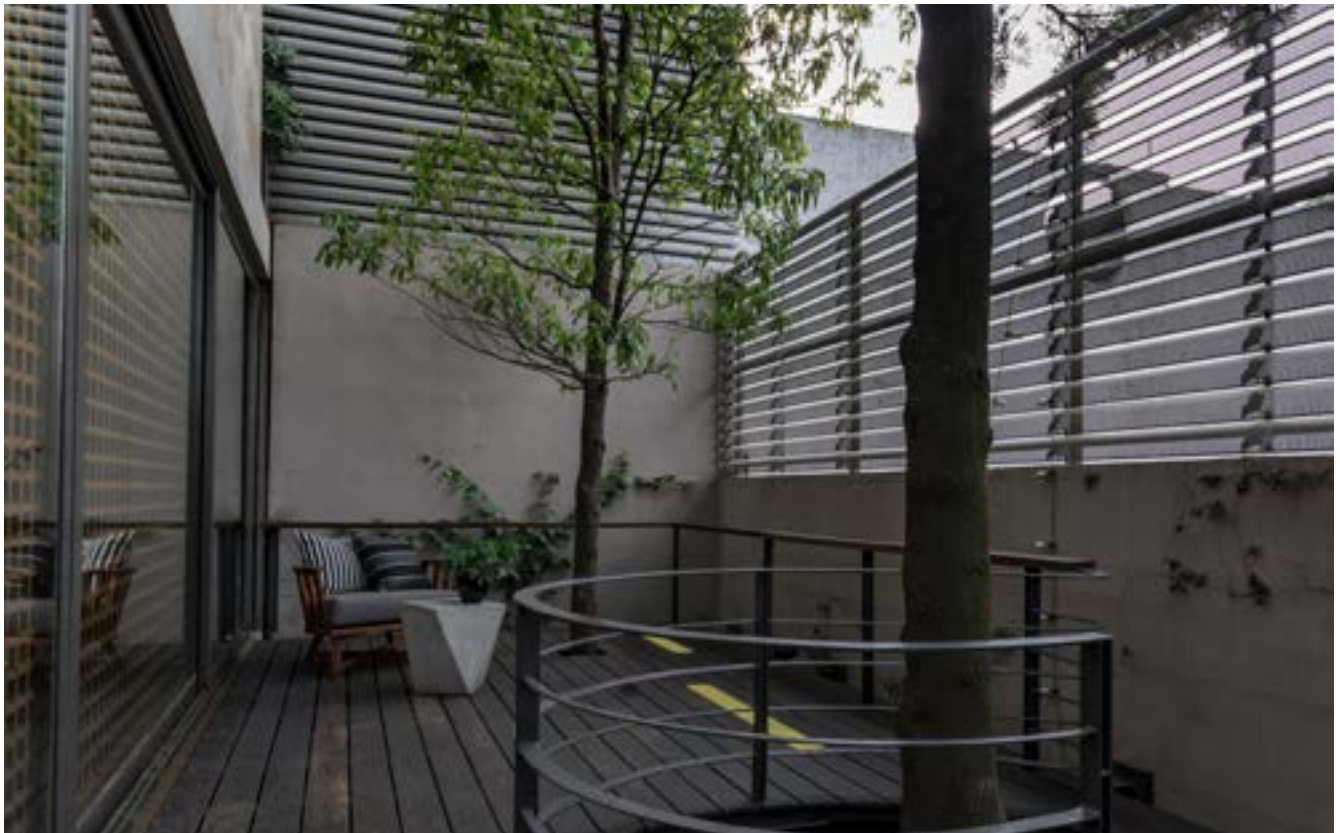


This project was designed in a longitudinal direction adapting to its site and has a very rational and modulated structure. The central core is an apparent concrete element that contains an elevator and receives a suspended staircase with a very discreet glass railing with wood finishes on the floor and ceiling. It is a focal point that gives life and communicates to all spaces and levels. On the ground floor there are gardens that harmonize the interior and exterior; here we find the utility rooms, parking lot and power house.













## GG House

This house was designed with an apparent concrete structure. It is a house that looks like a single family house but is actually a duplex where two people live, an art collector and a social anthropologist, each in their own home and sharing the common areas. Formwork systems were used to achieve good finishes in the apparent concretes. This house won the national Cemex Works award.









## D 27 Lofts



D 27 Lofts is a residential project located in "La Roma Norte", Mexico City. The intervention comprehends the modification of the third floor of an apartment building already built. The client decided to change the floor plan distribution in order to meet the housing demands of the market. That is why the project evolved from three to six apartments. The concept is space harnessing and luxury, and it is represented not only in the materials, finishes and lightening environment but also in space distribution. The square meters of each apartment increased by adding a beautiful private terrace. Finally the essence of the studio is represented in the way users enjoy the space.





## Popocatépetl Building

It was an exercise of a multi-family housing requested by a developer to build apartments in Popocatepetl Avenue, in the south of Mexico City.

The architectural language was thought to be in contemporary materials such as glass, concrete and steel.









---

## Tlalpan Complex



It is a complex of four apartment towers with 15 levels each, and is located in the south of Mexico City, in Coyoacán. The general complex has four and a half basements shared with the 4 parking towers, and a half basement for the general amenities of the entire complex which have an indoor pool, gym, playroom, multipurpose room. On the ground floor of the complex, each building has landscaped walkways that give access to each of the towers.



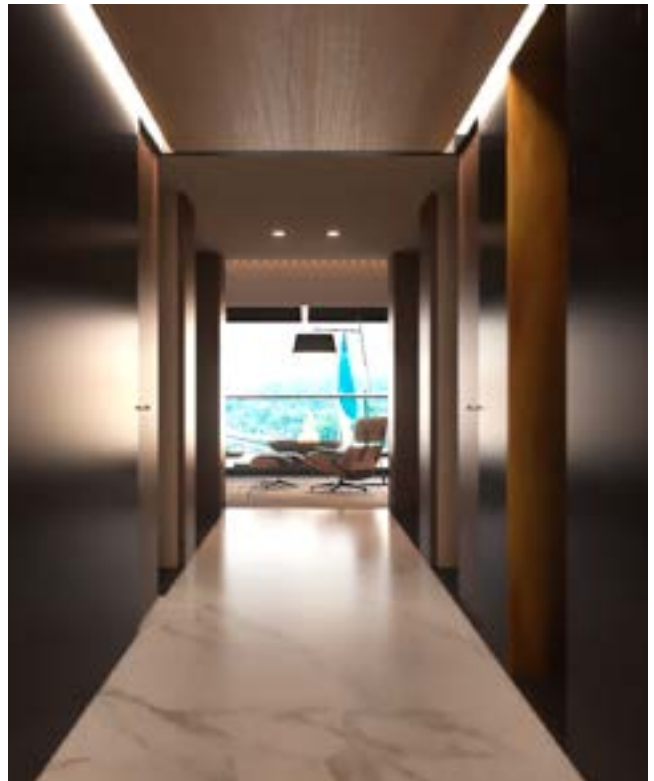




## Penthouse Polanco

This project is located in Mexico City. It is a luxury penthouse of 650 m<sup>2</sup> in which the views are the premise of the design itself.

This apartment has a spectacular terrace achieving the best sightseeing over the Chapultepec Park and the Castle.











---

## Príncipes Luxury Apartments

The image of the Principe Luxury Apartments is born from the image of quality and sobriety, conceived from the beginning in a structured and logical way. The ideals of luxury and interior comfort are brought into consideration as well as the design of the four facades that, despite presenting four different cardinal points, a cozy and pleasant result is achieved for both residents and visitors. The biggest challenge was the main facade, having to cover a central volume of services and facilities with ventilation requirements. The building is located within a beautiful site of 20,000 sqm. surrounded by forest and nature.

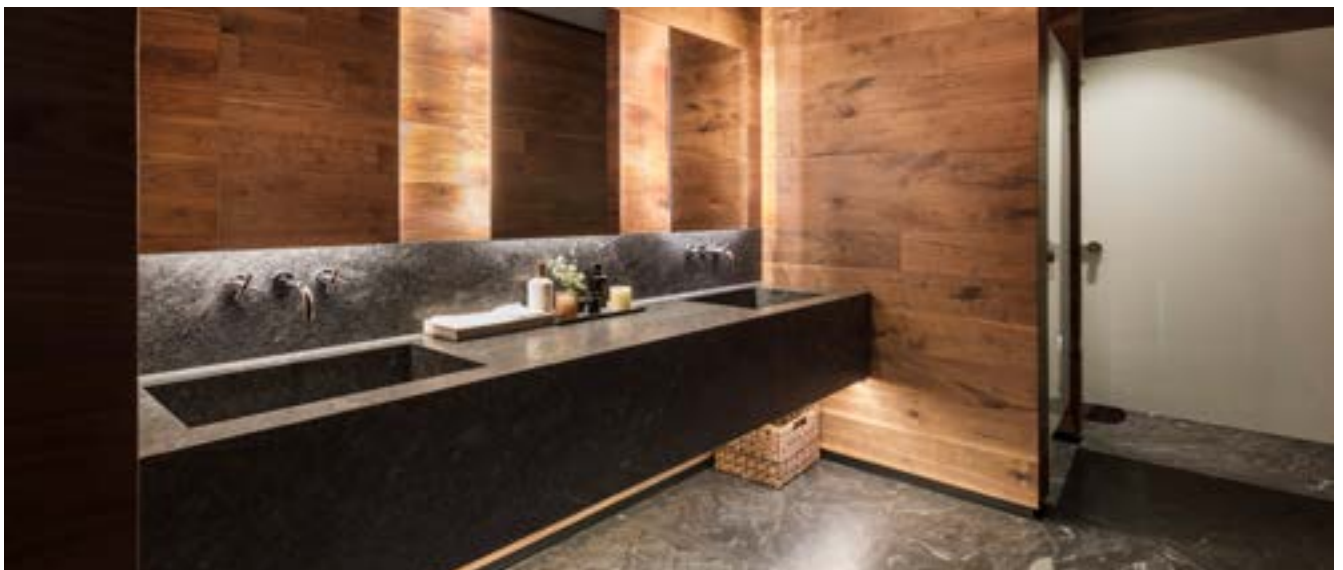


















---

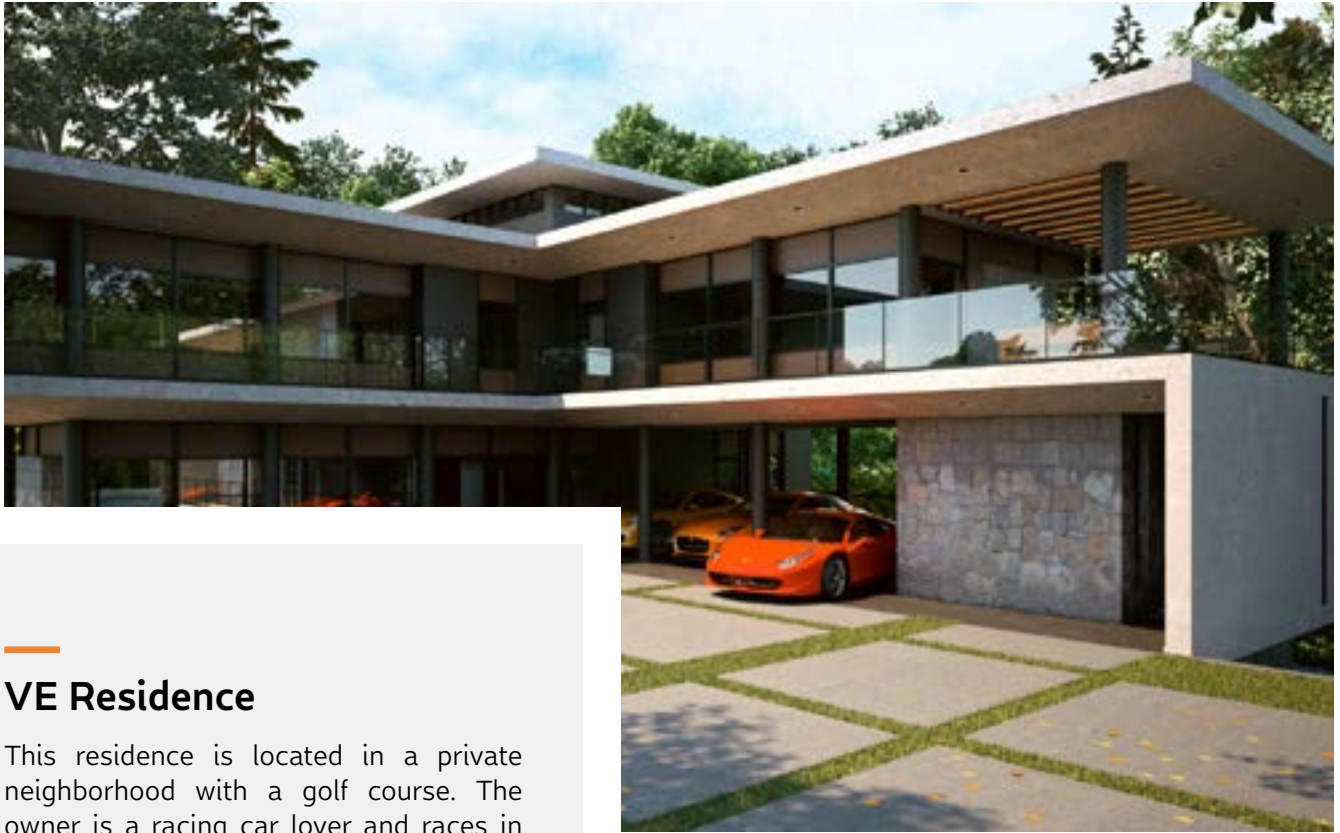
## RN 47 Apartments

RN 47 Apartments is a residential project with 72 apartments located in Mexico City. The complex has different common areas, such as a barbecue area, a children's area, a walking circuit among other amenities. It was designed on a 1,487 sqm area, where there is also a property considered of Urban Architectural Value by SEDUVI, since it is located within the Heritage Conservation Area and has a facade belonging to the first half of the 20th century.









## VE Residence

This residence is located in a private neighborhood with a golf course. The owner is a racing car lover and races in NASCAR. The house meets the request of being very linear, aerodynamic and open to all green areas and gardens. The house is conceived with a modular construction system, making the "performance" really efficient during the construction process; and in all subsequent interiors and finishes modulations.









# Health Design

---



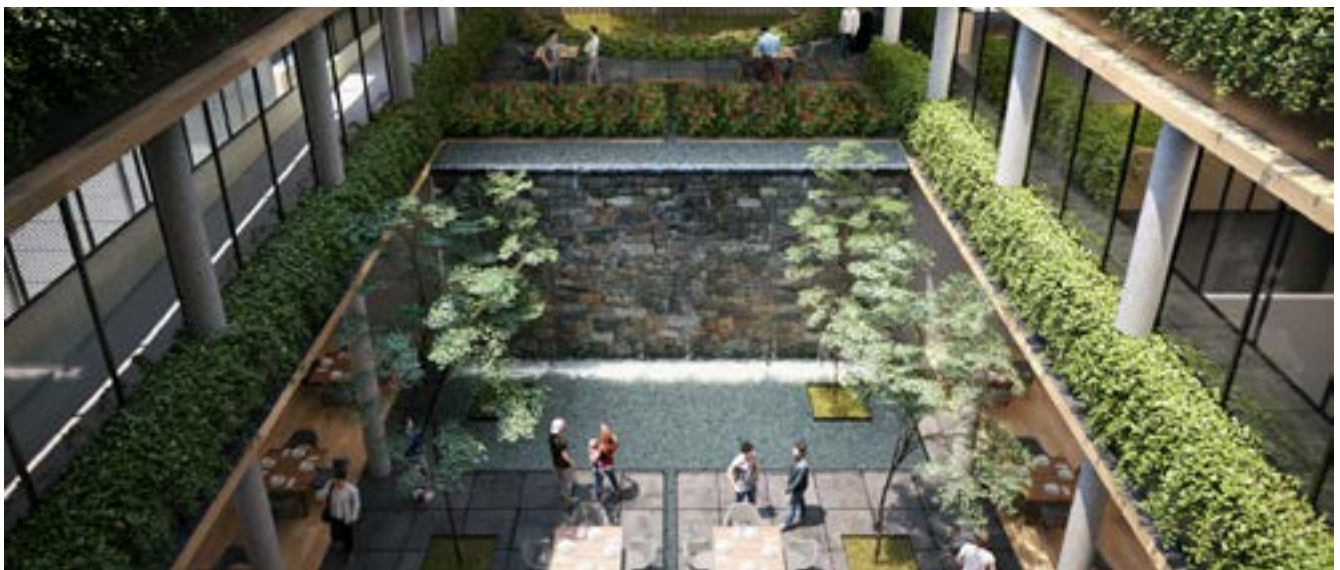


---

## HPHA - Hospital

HPHA Hospital is a highly specialized healthcare facility in cancer treatments. It is placed in an existing campus which becomes a challenge, but also an opportunity to connect and improve the existing conditions. It is a tower that begins with a bunker in the deepest basement, then has a podium which connects with the existing hospital and finally from this podium the tower emerges. In the bunker there is a PET-CT, Linear Accelerator, Brachithery, Radiotherapy and a Ciclothron.











## HPHA – Annex



HPHA Andares Annex is an extension of the existing Hospital, which is a highly specialized healthcare facility in Guadalajara, Jalisco. It is placed in an existing campus, where the basement was reinforced and two of its major buildings (Annex and Ambulatory sections) of the same hospital were connected to improve paths on the ground floor.





## HPHL - Hospital



HPHL Hospital is a medical hub in León, Guanajuato, México. This 30,000 sqm medical tower will be located in the newest part of the city, with outstanding views of “El Palote” dam and the Metropolitan Park . It is conceived as an iconic lighthouse building of institutional reference, and timeless quality architecture. It contemplates a third-degree medical assistance by Hospitales Puerta de Hierro, complemented by 150 consulting rooms, sky lobbies and parking lot. Having a central atrium, all spaces have natural lighting, something unusual in other hospitals. The separation of vehicular and pedestrian flows allow minimal vehicle and pedestrian contact on the ground floor.













## Villazul



Villazul is an Elderly People's Residence located in Buenavista, State of Mexico. The design itself is aimed to create the sensation of being at home, instead of being in a hospital. The architectural proposal is focused on this duality between a building that carries out medical services for elderly people and also a building that carries out sensory stimulation into open and closed spaces. The frontal block of public spaces and suites have views to a golf course. All of the suites within the complex have beautiful views to the central garden and adjacent gardens and plenty of natural light.









## Wen Living



A “Holistic Wellness Sanctuary” surrounded by nature. Wen Living is a shelter to rest from hectic urban lives. Wen Living is about loving the life and enjoying every moment of every day. It is a place to live extraordinarily: 42 high end residence apartments for 55+ active lifestyle adults. It is a place to heal and restore physical, mental, and emotional health. The project will comply with higher standards of design and well-being and will be certified in Leed. One of the key elements is the respect to the natural environment and saving energy and natural resources with a total Eco friendly strategy. This project won the “International Home of the Year” by the 2020 Global Innovation Awards.

















## DMCQ



DMCQ is a hospital developed in Querétaro, Mexico. The DMCQ building is a hospital designed for people with diabetes and other obesity-related diseases. The project is located in one of the suburbs of the city of Querétaro called "El Pueblito" and it is part of a master plan that has various uses such as housing, hotel, commerce and school. Architecturally, the project consists of 3 orthogonal volumes, connected by another volume that intersects them in front of the building where there are public areas and administrative areas. The building has 120 rooms as well as a treatment area, with all the accessories and equipment that are required to treat patients with these aforementioned characteristics.





---

## CUP - Hospital



CUP - University Hospital is located in the State of Mexico on a top of a hill. This condition was taken in consideration for the design of the façade. The relationship with the topography was the reason of its curved shape. The hospital has 150 beds in an area of 70,000m<sup>2</sup>.











## Cosmopolitan Health District

Health District by Cosmopolitan Group is a medical hub in Tijuana, Mexico, near the border with the U.S.A. This 60,000 sqm medical tower contemplates a one-of-a-kind, highly specialized model with third degree medical assistance by Hospitales Puerta de Hierro, and will be one of the tallest buildings in the city. The program is complemented by 150 consulting rooms, a Residence Inn, a Sky Lobby and parking lot. The building has several public points to generate beautiful open spaces, such as the terrace for the Residence Inn, the Hotel terrace with diverse outdoor amenities and the Sky Lobby on the 15th floor with outstanding views of the city.

















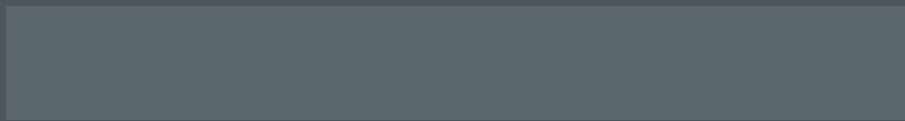
## Ballesol

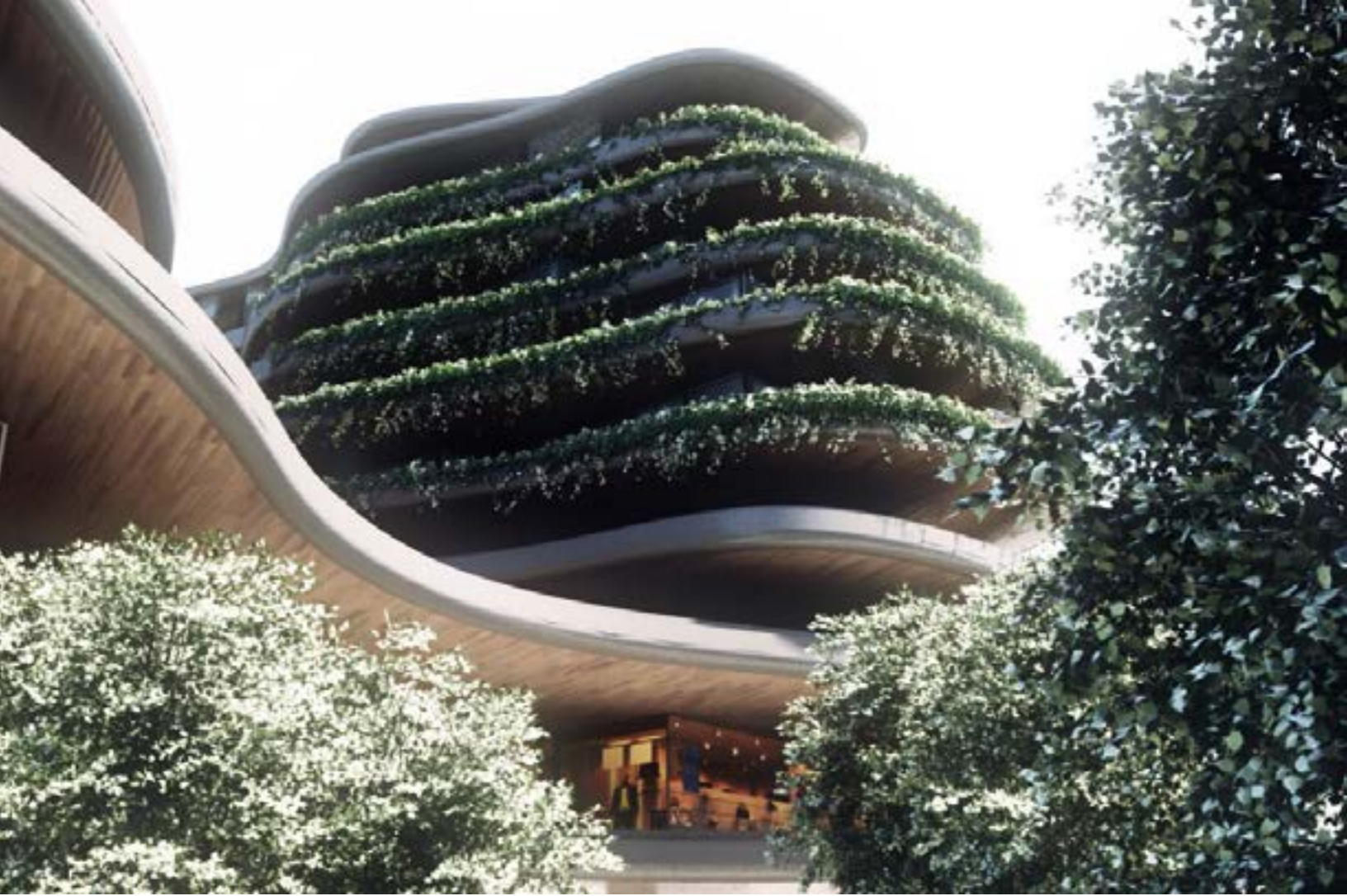
BALLESOL is the brand of RETIREMENT HOUSES with the greatest recognition in Spain. They have allied with GRUPO PRESIDENTE, a prestigious hotel operator, in Mexico. This first project aims to be the “flagship” of this alliance under Mexican market demands, in terms of programmatic and spatial premises. The great architectural challenge is to make a building with an extended public program that makes you feel like “A HOUSE”, as it is neither a hospital nor a hotel. A “house” where the two types of inhabitants (assisted and unassisted), manage to live in harmony but also in the possibility of creating new friendly bonds.



# Mixed use Design

---



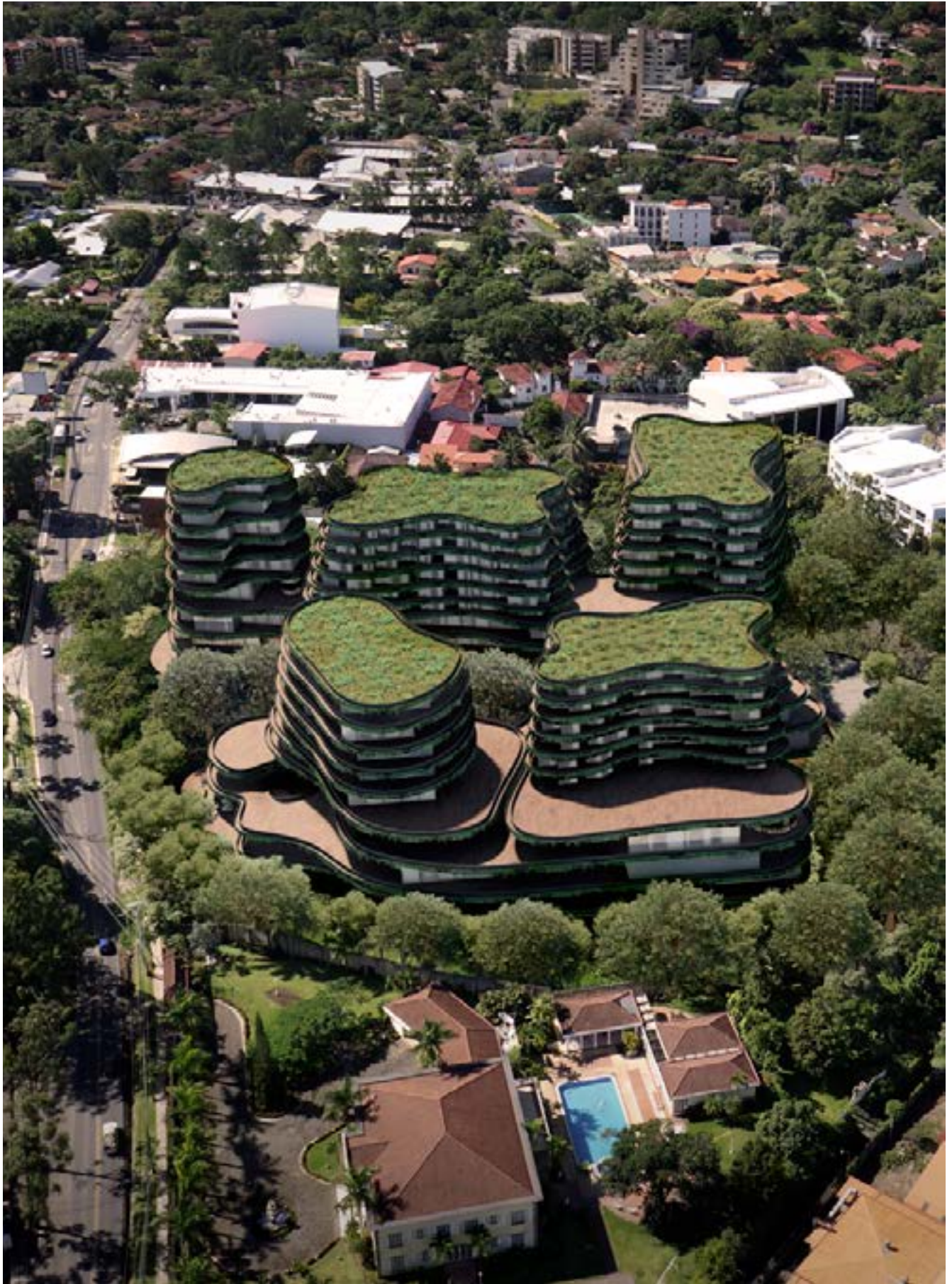


## RCR Costa Rica



RCR is a mixed use project located in Costa Rica, done in collaboration with Dialog and Rojkind Arquitectos. The design concept starts from creating a building whose green spaces are predominant, contemporary and alive, with public spaces, interactive and dynamic for the pedestrians and the people coming to the project, as well as the people living there. Based on these premises the design responds totally to the site, a privileged area with monumental trees that become the central element of the architectural proposal. The central space is a tribute to these beings who become master elements within the architecture.







## Landmark Tijuana I

Located in one of the most valuable areas of the city, Landmark Tijuana is a mixed-use complex under the Lifestyle Retail Center concept which includes a shopping center, a hotel, an office building and a residential tower. The residential tower was designed by Alvear Arquitectos to provide residents with the experience of enjoying the amenities and services that the complex comprises without having to travel significantly. The design of the tower has changed the dynamic of the real estate market within Tijuana. The project was sold in an 80% before even starting foundations. Due to the fantastic results within the market we are about to start a second phase of residential towers within the complex.



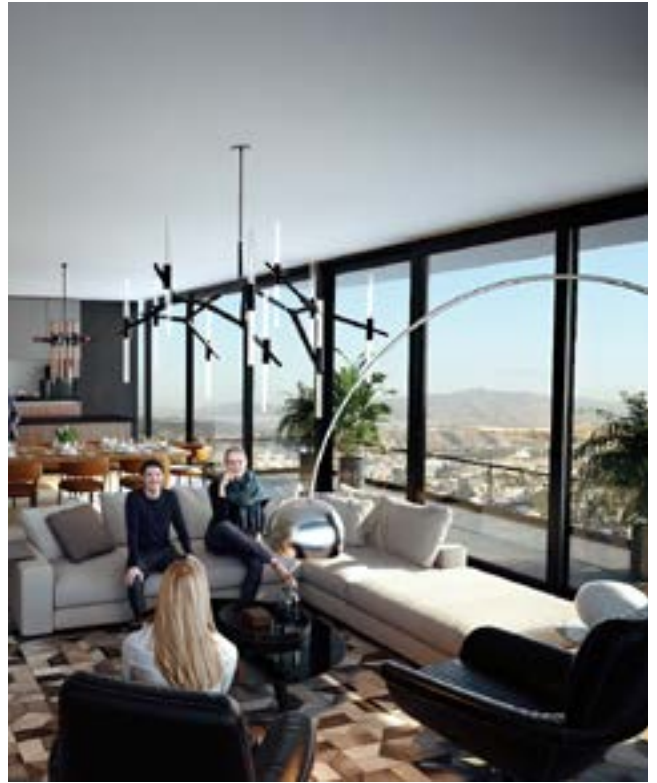










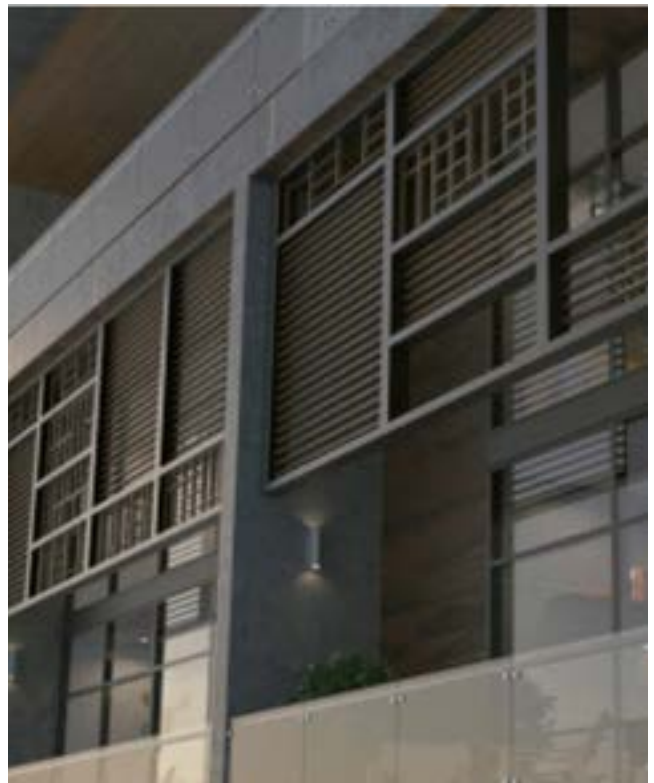


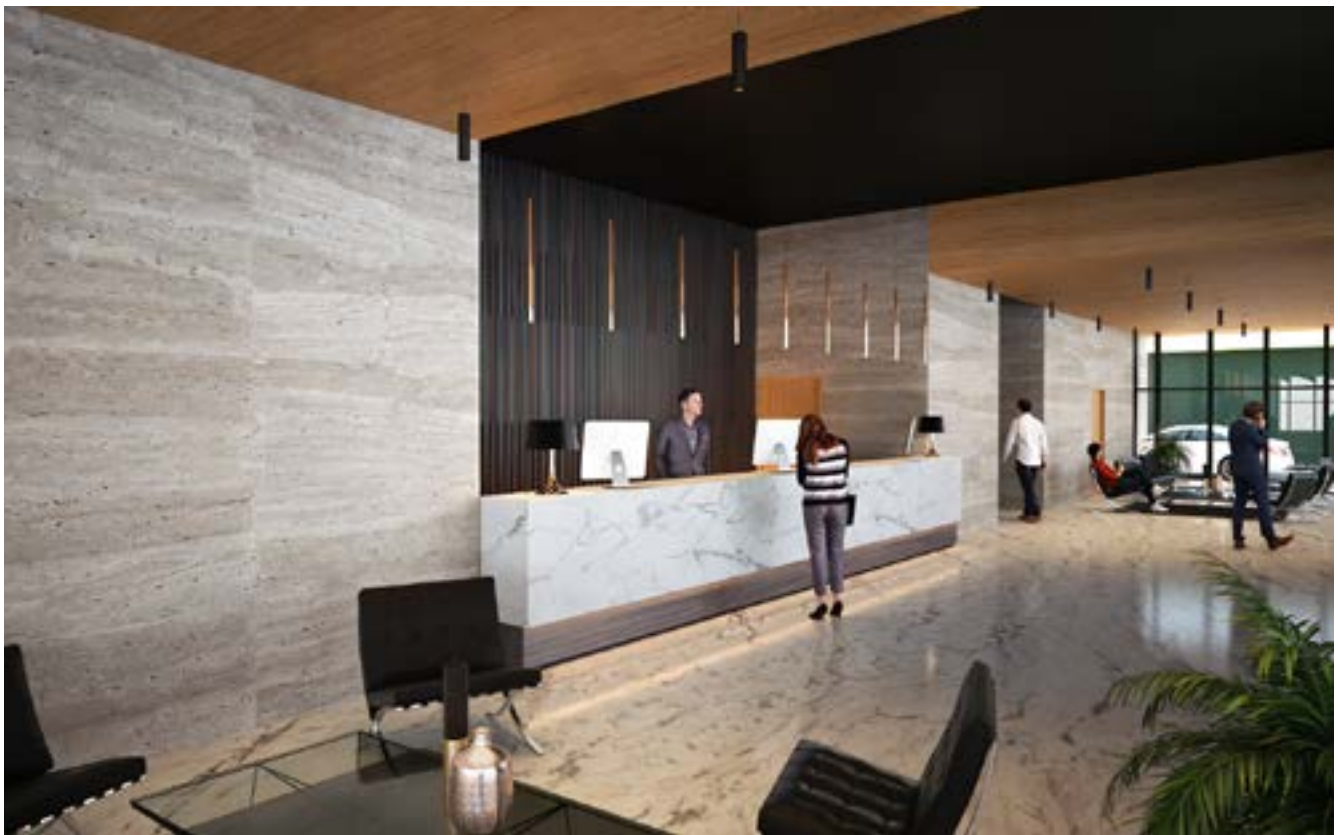
---

## Chihuahua Complex

It is a Project carried out in partnership with AECOM Los Angeles, invited by a developer, from Monterrey, called ORANGE. It is a mixed-use project, with a commercial area where in addition to boutiques it has a luxury market, offices, a co-working area, two 65-story apartment towers with 2 apartments each floor.









## LV Complex



It is a mixed use project located in Lomas Verdes, State of Mexico. It is a project that has retail, offices, a boutique hotel, restaurants and housing. The project was located strategically in the main street for commercial reasons. On the other hand, the housing elements were located in the upper floors in order to generate privacy. The building has open walkways all over the project and restaurants in the higher floors. In the back part of the building, the topography gets incorporated into the landscape, generating a unified natural design.





# Recreational Design

---



---

## Zhana Center



ZHANA CENTER is a tourist center located in Los Cabos, Mexico. The project is part of a set of initiatives that work together to consolidate a shared project, which proposes to provide a comprehensive approach through a very diverse architectural program.

Architecturally, the proposal opts for a traditional appearance with several similarities to the Californian style, but with the addition of technologies that make the project more efficient.







# Corporate Design

---





## Lomas Building

It is a corporate project, whose objective was to achieve offices with spaces with natural ventilation, using terraces, cross ventilation, balconies; for a contemporary and more hybrid work environment, with a minimum of fixed workstations.

The building has a roof garden for common events and on the ground floor there is space for a cafeteria and a restaurant and has 4 parking floors.















---

## Gerdau Corsa



Gerdau Corsa is a Brazilian company dedicated to the production of steel with three plants operating in Mexico and with several plants around the world.

The project was a contest won by Alvear Arquitectos for the construction of a campus for its offices located in the state of Hidalgo Mexico.

---

## Paradygm



Paradygm is an office project located in Polanco, one of the most exclusive neighborhoods in Mexico City.

The materials used in this project were defined by a contemporary language, such as wood, concrete, and steel.

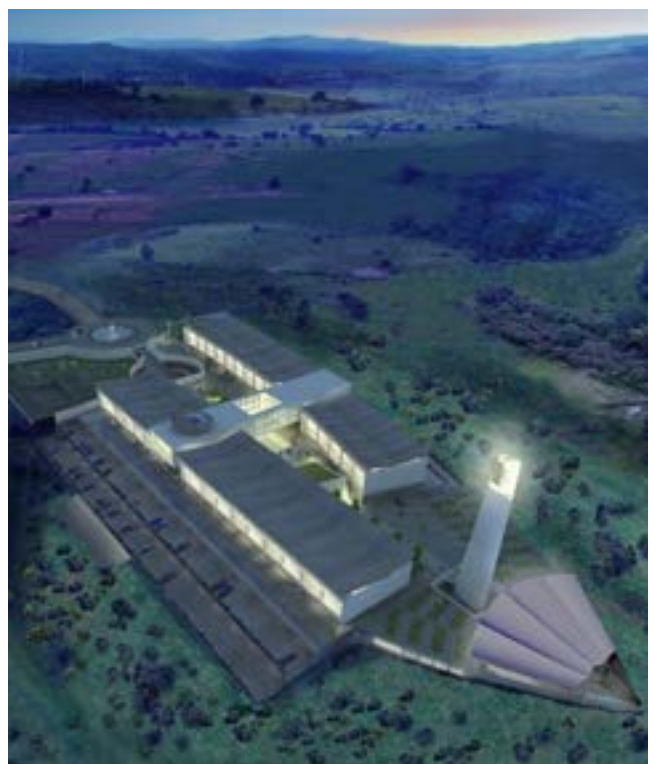




---

## Cinepolis Corporate

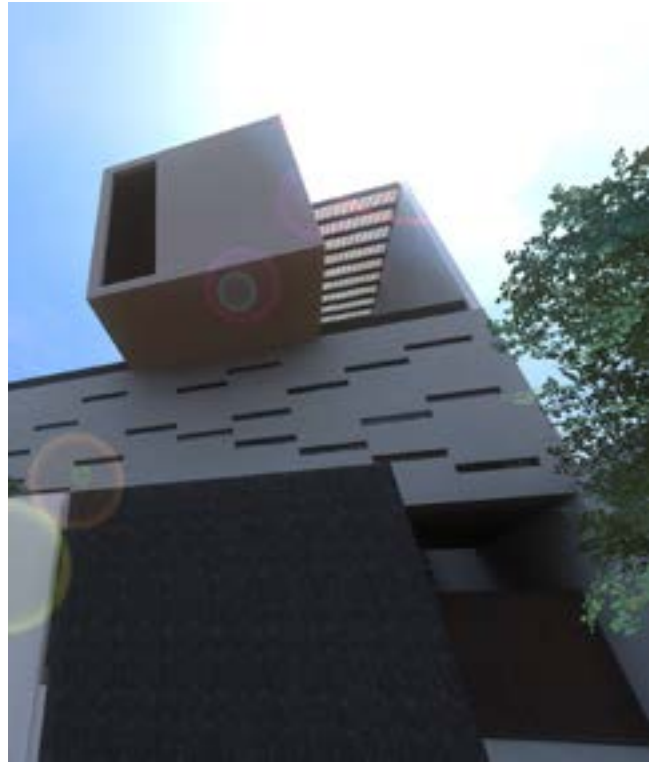
This Project is in a place called "Tres Mariás" in Morelia, in the state of Michoacán. It was also an invitation to a contest and we got second place.



---

## Centrum Corporate

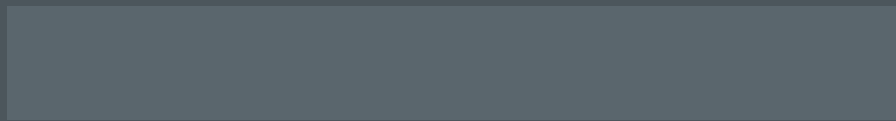
Centrum is a company dedicated to the supply of medical equipment. It was also a contest, in which second place was achieved.



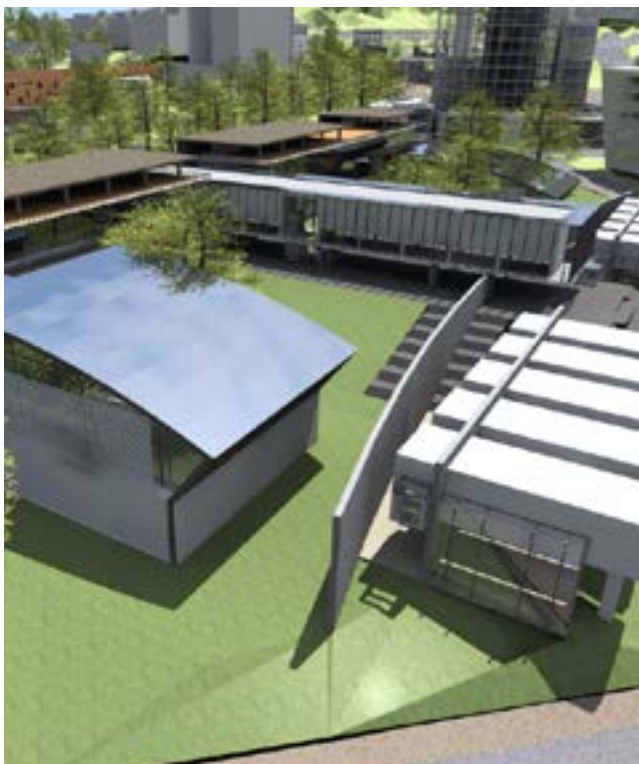


# Urban Design

---







## Knowledge and Culture City

It is a technological complex developed in a "3 part" scheme between academy, government and enterprises. It is located in the urban context of the city of Pachuca, Hgo. This complex concentrates Universities with high academic quality programs, important companies with turns in science and technology, linked to research, development and innovation and cultural spaces. The master plan consisted of the location of educational institutions, research and technological development centers, parks for the promotion of science and culture, all this inscribed in a large area of 178 hectares, delimited by adjoining walls and organized in the manner of an urban center.









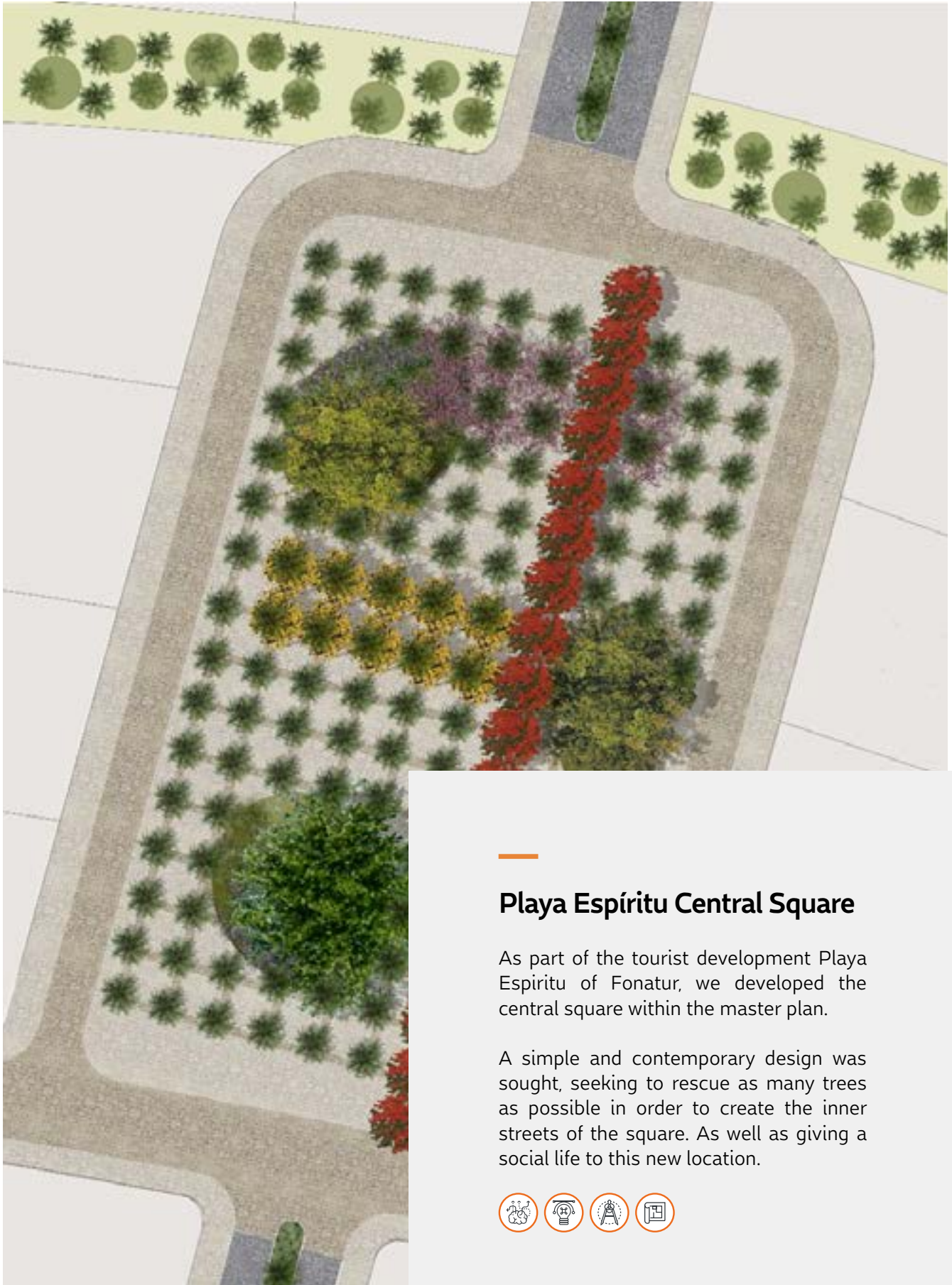
## BRT Querétaro



BRTQ is an urban project Located in Querétaro, México. The project is an initiative of the government of Querétaro to have a public transportation system in one of the most important avenues of the city, Avenida Constituyentes. This transportation system will be very similar to the Metrobus project that exists in Mexico City, in several avenues, and will be one of the largest infrastructure projects of the last decade in Querétaro. Architecturally, the different typologies of stations have a purist design, with volumes completely orthogonal and solid. The complete route has 9 side single stations, 6 central stations of one floor and 3 central stations of 2 floors that will be located in the most important places of Avenida Constituyentes.







---

## Playa Espíritu Central Square

As part of the tourist development Playa Espiritu of Fonatur, we developed the central square within the master plan.

A simple and contemporary design was sought, seeking to rescue as many trees as possible in order to create the inner streets of the square. As well as giving a social life to this new location.









# Government Design

---



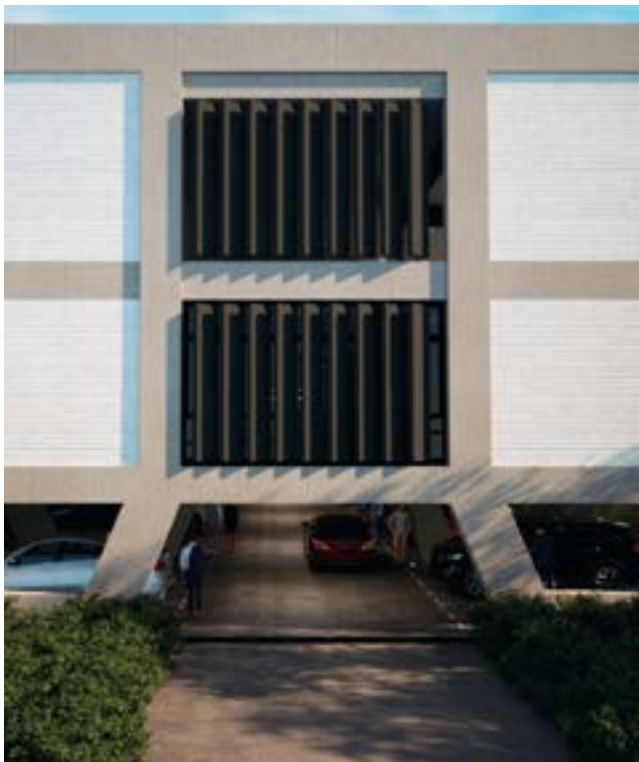


---

## Mexicable

It is the first mass transportation project known as Cable Car, in the Metropolitan area, more specifically to the north of Mexico City, in the municipality of Ecatepec, Edo. de Mexico. It is a system that runs along 4.9 km. made up of 7 boarding stations, which begins on the Via Morelos, crosses the México - Pachuca highway, continues its route parallel to Av. San Andrés until it reaches the La Cañada region.





## CAPASEG

It is an office building project done to hold the administration of the water treatment system for the government in Guerrero. The building itself was designed taking into consideration the natural context of the site, using natural light to enter the spaces. The materials used in this project, such as water pipes in the façade louver system, were thought to reduce the maintenance costs as a design gesture of recycling elements. Architecturally, the building is a big orthogonal volume, with openings that give views to the access fountain and the rich vegetation of the site.





# Recognitions and Awards





NIZUC RESORT & SPA NAMED  
THE 'MOST INSTAGRAMMABLE HOTEL IN THE WORLD'



## Recognitions & Awards

He has gained recognition and project design awards in Mexico, Italy, Brazil, USA, Costa Rica, South and North America and recently a world wide Award. National and international magazines have published projects from Alvear Arquitectos.





---

**Phone:**

55 6325.6489

---

**Email:**

[jalvear@alveerarquitectos.com](mailto:jalvear@alveerarquitectos.com)

---

**Web page:**

[www.alveerarquitectos.com](http://www.alveerarquitectos.com)





**ALVEAR** ARQUITECTOS