

 **DGSHAPE**  
A Roland DG Group Company

From Design to Perfection  
***Mill with Confidence***

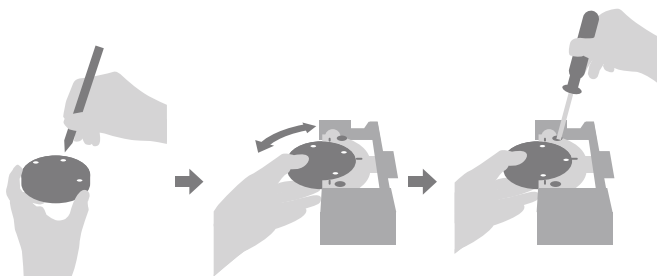


## DWX-52Di Plus

## Precision Performe and Efficiency Expert

### Introducing the New DWX 52Di Plus 5-Axis Dental Mill for Maximum Efficiency and Production

When designing this new model of the industry's best-selling series of dental mill. It was important to keep everything users love. Then make it even better, capable of producing a wide range of restorations, including crowns, copings, bridges, inlays and onlays, veneers, abutments, implant bars, screw-retained crowns, the DWX-52Di Plus 5-Axis dental mill offers a high reliable, precise, enhanced capabilities to make your lab more efficient and productive.



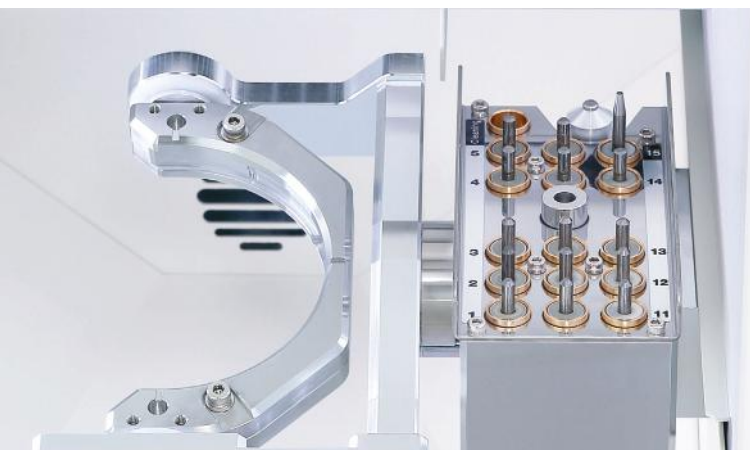
### New C-type Clamping System

The new C-type clamp system for 98.5mm discs offers fast and secure set-up of Zirconia, Wax, PMMA, gypsum, PEEK, glass fiber-reinforced resin, composite resin and CoCr sinter metal materials. The new C-type clamp enables greater material utilization.



### More Comprehensive Solution

The DWX-52Di Plus 5-Axis dental mill can produce a wide range of restorations, including crowns, copings, bridges, inlays and onlays, veneers, abutments, implant bars, screw-retained crowns.

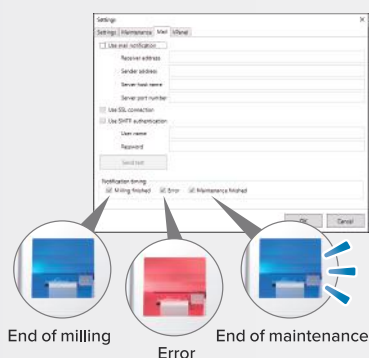


### 15-Station Automatic Tool Changer (ATC)

The DWX-52Di Plus provides continuous, unattended milling with a 15-station Automatic Tool Changer (ATC) and includes dedicated slot for an included cleaning tool. Now you can load the included cleaning tool into the ATC and set it up to automatically sweep away zirconia powder and other material dust for a cleaner milling surface.

### User-friendly Design

A user-friendly Virtual Machine Panel (Vpanel) enables convenient production and device monitoring from computer. Email notifications keep you informed of operational status, including milling and maintenance completion, or any errors in order to minimize down time.



### Precision 5-Axis Milling

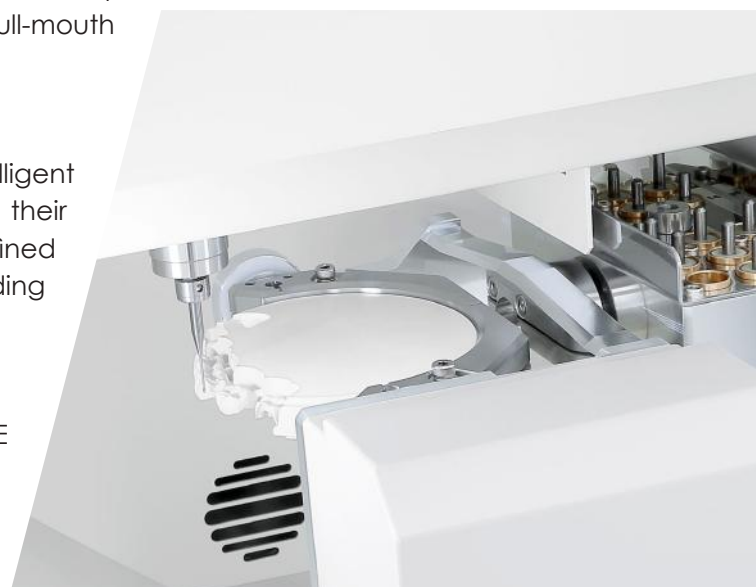
The DWX-52Di Plus simultaneously rotates and tilts discs for deep undercuts and milling large arch applications and other full-mouth restorations with ease.

### Intelligent Tool Control

Vpanel operation has upgraded to include the Intelligent Tool Control function that intuitively swaps out tools from their stocker position when they have reached their user-defined lifespan with a designated replacement tool without needing to pause production.

### Comprehensive Support Network

In addition to online or telephone assistance, DGSHAPE also offers educational seminars aimed at increasing customers' familiarity and confidence with products and services. Service engineers are also available worldwide to assist customers with any questions they may have.



Specifications		
<b>Millable Material</b>	Zirconia, Wax, PMMA, Composite Resin, PEEK, Gypsum, Glass-Fiber-Reinforced Resin, CoCR sinter metal	
<b>Loadable workpiece shape</b>	Disc-type (with step)	Step section: 98.5 mm (3.88 in.) (diameter), height 10 mm (0.39 in.) Body section: 95 mm (3.74 in.) (diameter), height max. 60 mm (2.36 in.)
<b>Operating speed</b>	XYZ axis: 6 to 1,800 mm/min. (0.24 to 70.9 in./min.)	
<b>Spindle motor</b>	Brushless DC Motor	
<b>Spindle rotating speed</b>	6,000 to 30,000 rpm	
<b>Rotatry axis travel angle</b>	A: $\pm 360^{\circ}$ , B: $\pm 30^{\circ}$	
<b>Number of milling burs housed</b>	15	
<b>Attachable milling bur</b>	Shank diameter: 4 mm (0.16 in.), Length: 40 to 55 mm (1.57 to 2.17 in.)	
<b>Compatible compressed air</b>	0.02 to 0.2 Mpa	
<b>Control command set</b>	RML-1, NC code	
<b>Interface</b>	USB	
<b>Power requirements</b>	AC 100 V to 240 V $\pm 10\%$ , 50/60 Hz (overvoltage category II, IEC60664-1), 2.0 A	
<b>Power Consumption</b>	Approx. 200 W	
<b>Operating noise</b>	During operating: 70 dB (A) or less (when not cutting), During standby: 45 dB (A) or less	
<b>External dimensions</b>	Widht x Depth x Height: 495 x 660 x 600 mm (19.5 x 26.0 x 23.6 in.)	
<b>Weight</b>	67 kg (147.7 lbs.)	
<b>Installation environment</b>	Indoor use, Altitude: Up to 2,000 m (6,562 ft.), Temperature: 5 to 40°C (41 to 104°F), Humidity: 35 to 80% (no condensation), Ambient pollution degree: 2 (as specified by IEC 60664-1), Short-term temporary overvoltage: 1,440 V, Long-term temporary overvoltage: 490V	
<b>Included Items</b>	Power cord, USB cable, Manuals, DGSHAPE Software Package CD, Detection pin, Automatic correction jig, Material Adapter Rack, Pin-type material adapter, Hexagonal driver, Spanner (for clamp), Spanner (for spindle), Milling bur holders, Milling bur positioner, Cleaning tool, Option adapter ID labels, Dust collection hoses, Dust collection hose adapter, Regulator, Cleaning brush etc.	



## DWX-52D Plus

### New Clamping System:

A new snap-on clamp system with 6 included adapters for 98.5mm discs offer fast and secure set-up of different materials.

### User-friendly Design:

A user-friendly Virtual Machine Panel (Vpanel) enables convenient production and device monitoring from your computer.



5  
Axis

15  
Tools

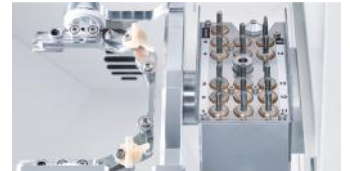
Dry

Mill

6  
Adapter

### **Adaptor Rack for Increased Efficiency:**

6 adapters for 98.5mm material discs are included as standard with the DWX- 52D Plus allowing you to queue up multiple milling jobs for efficient job management. An optional disc adapter rack is also available.



Specifications	
<b>Millable Material</b>	Zirconia, Wax, PMMA, Composite resin, PEEK, Gypsum, Glass fiber reinforced resin, CoCr sinter metal
<b>Spindle Rotating Speed</b>	6,000 to 30,000 rpm
<b>Rotary Axis Travel Angle</b>	A : $\pm 360^\circ$ , B: $\pm 30^\circ$
<b>Number Of Milling Burs Housed</b>	15
<b>Compatible Compressed Air</b>	0.02 to 0.2 Mpa
<b>Interface</b>	USB
<b>Power Consumption</b>	Approx. 200 W
<b>Weight</b>	67 KG (147.7 lbs.)

## DWX-52DCi Plus

### Increased productivity and maximum versatility:

A snap-on clamp system for the Automatic Disc Changer enables loading of up to six 98.5mm discs for continuous milling of multiple jobs

**DWINDEX Software Monitors Your Milling Performance:** Monitor milling operations and help you determine ROI so you can better plan, identify and manage machine productivity and lab profitability.

**Reliable, Unattended Milling:** Load the 15-station Automatic Tool Changer

**Precision 5-Axis Milling:** A smooth and steady ball screw-driven system offers exceptionally precise results.

The ultimate in 24-hour productivity



5  
Axis

15  
Tools

Dry

Mill

6 Automatic  
Disc Changer



### Specifications

<b>Millable Material</b>	Zirconia, Wax, PMMA, Composite resin, PEEK, Gypsum, Glass fiber reinforced resin, CoCr sinter metal
<b>Spindle Rotating Speed</b>	6,000 to 30,000 rpm
<b>Rotary Axis Travel Angle</b>	A : $\pm 360^\circ$ , B: $\pm 30^\circ$
<b>Number Of Milling Burs Housed</b>	15
<b>Compatible Compressed Air</b>	0.02 to 0.2 Mpa
<b>Interface</b>	USB
<b>Power Consumption</b>	Approx. 200 W
<b>Weight</b>	105 KG (231.5 lbs.)

## DWX-53DC

## ADVANCED MILLING TECHNOLOGY The Best Is Now Even Better

The completely new design allows for high-precision and rapid milling.

**Storage:** All the accessories can be stored at the storage space.

**Tablet stand:** By loosening the screws on the top of the storage, the tablet stand can be pulled out.

**ZS-53DC:** The tool gripping force has been increased compared to the ZS-52D, resulting in further improvement of machining stability.

**Auto Tool Changer (ATC)** Milling bur change operation is performed by the ATC motor. Compressed air is not necessary for ATC. (Compressor is not used for ATC.)

**Adapter replacement:** In the DWX-53DC, the changer unit operates in the vertical direction. For the desired adapter, the AB axis unit moves forward and changes the adapter.

**ATC Magazine and Milling Bur Sensor:** 15 milling burs can be set to the ATC magazine.

**Air Flow Sensor:** Cutting waste is taken out using dust collector. The air flow sensor monitors the air flow to prevent the machine from operating when the dust collector is not used.

**Milling burs:** Only milling burs with a shank diameter of 4 mm can be used. Use the milling bur positioning jig to match the length of the milling bur.



**5  
Axis**

**15  
Tools**

**Dry  
Mill**

**Automatic  
Disc Changer**

### Specifications

<b>Millable Material</b>	PMMA, Zirconia, Wax, Composite Resin, PEEK, Gypsum, Glass-Fiber-Reinforced Resin, Pre-Sintered Chromium Cobalt
<b>Spindle Speed</b>	30,000 RPM
<b>Rotary Axis</b>	A : $\pm 360^\circ$ , B: $\pm 35^\circ$
<b>Air Pressure Requirements</b>	0.4 Mpa
<b>External Dimensions (WxDxH)</b>	23.62 in. x 29.25 in. x 32.75 in.
<b>Weight</b>	264.55 lbs. (120 kg)
<b>Disc Changing Time</b>	1 minute, 7 seconds
<b>Material Adapter Compatibility</b>	Standard Adapter: ZMA-53DC, Open-Edge Adapter: ZMA2-53DC
<b># of Material Adapter Patterns</b>	100
<b>Additional Features</b>	Redesigned, more robust spindle for 3x the gripping power with PMMA applications. Built-In Integrated Webcam, Automatic Extractor Filter Cleaning, Thermohydrrometer Accelerometer Sensors
<b>Accessories Included</b>	Dedicated Extraction Unit and Connection Cable, Built-In Integrated Webcam, Material Adapter Disc Rack (ZR-53DC), Standard Material Adapters (6-Pack, ZMA-53DC), Open-Edge Material Adapter (ZMA-53DC), 4.0 mm Roughing Tool (ZRB-200D), Diamond-Like Coated (DLC) Milling Tool Set (ZPB-100D, ZPD-50D, & ZPB-30D)
<b>Attachable Bur</b>	Shank 4 mm (Diameter), 40-55 mm (Length)
<b>Loadable Workplace</b>	Step Section: 98.5 mm Diameter, 10 mm Height; Body Section: Max Height 60 mm

Specifications		
<b>Millable Material</b>	Zirconia, Wax, PMMA, Composite Resin, PEEK, Gypsum, Glass-Fiber-Reinforced Resin, CoCR sinter metal	
<b>Loadable workpiece shape</b>	Disc-type (with step)	Step section: 98.5 mm (3.88 in.) (diameter), height 10 mm (0.39 in.) Body section: 95 mm (3.74 in.) (diameter), height max. 60 mm (2.36 in.)
<b>Operating speed</b>	XYZ axis: 6 to 1,800 mm/min. (0.24 to 70.9 in./min.)	
<b>Air Pressure Requirement</b>	0.4 Mpa	
<b>Spindle rotating speed</b>	6,000 to 30,000 rpm	
<b>Rotatry axis travel angle</b>	A: $\pm 360^\circ$ , B: $\pm 35^\circ$	
<b>Number of milling burs housed</b>	15	
<b>Attachable milling bur</b>	Shank diameter: 4 mm (0.16 in.), Length: 40 to 55 mm (1.57 to 2.17 in.)	
<b>Disc Changing Time</b>	1 min. 7 sec.	
<b>Control command set</b>	RML-1, NC code	
<b>Interface</b>	USB	
<b>Power requirements</b>	AC 100 V to 240 V $\pm 10\%$ , 50/60 Hz (overvoltage category II, IEC60664-1), 2.0 A	
<b>Power Consumption</b>	Approx. 250 W	
<b>External dimensions</b>	Widht x Depth x Height: 495 x 660 x 600 mm (23.62 x 29.25 x 32.75 in.)	
<b>Weight</b>	264.55 lbs (120 kg)	
<b>Additional Features</b>	Redesigned, more robust spindle for 3x the gripping power with PMMA applications. Built-In Integrated Webcam, Automatic Extractor Filter Cleaning, Thermohydrometer Accelerometer Sensors	
<b>Accessories Included</b>	Dedicated Extraction Unit and Connection Cable, Built-In Integrated Webcam, Material Adapter Disc Rack (ZR-53DC), Standard Material Adapters (6-Pack, ZMA-53DC), Open-Edge Material Adapter (ZMA-53DC), 4.0 mm Roughing Tool (ZRB-200D), Diamond-Like Coated (DLC) Milling Tool Set (ZPB-100D, ZPD-50D, & ZPB-30D)	





WHERE **TRUST** COMES **FIRST**



**Warranty Ke Saath Bhi  
Warranty Ke Baad Bhi**

### For Sales Queries

 85277 00805

 [cadcamcrm@unicorndenmart.com](mailto:cadcamcrm@unicorndenmart.com)

### Customer Care

 011-45551250, 95994 48518

 [care@unicorndenmart.com](mailto:care@unicorndenmart.com) | [care1@unicorndenmart.com](mailto:care1@unicorndenmart.com)



SCAN TO VISIT OUR WEBSITE



Corporate Office: 3 Local Shopping Centre, MOR Land, Near J Block DDA Market,  
New Rajender Nagar, New Delhi – 110060

    /unicorndenmart.com

\* Accessories shown may not be a part of standard equipment. Specifications are subject to change without notice.

Ver 03/2025