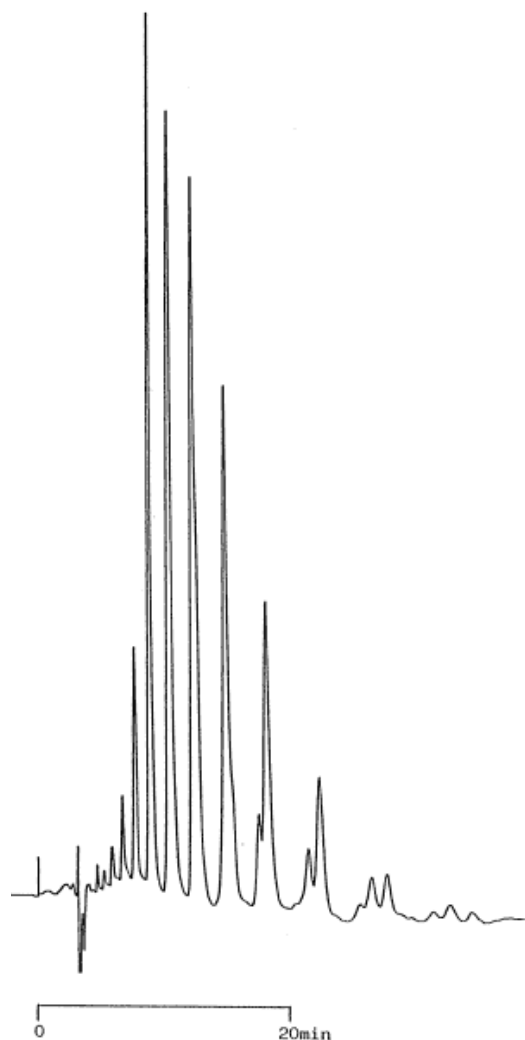


# InertSearch™ for LC

Inertsil® Applications

## 9. Coconut oil

Data No. LA064-0000



Column :Inertsil ODS

5 $\mu$ m

250  $\times$  4.6 mm I.D.

Column Cat. No. :5020-02102

Eluent :CH<sub>3</sub>CN/THF/CH<sub>2</sub>Cl<sub>2</sub> = 70/20/10

Flow rate :1.0 mL/min.

Col. Temp. :Ambient

Detection :RI

Injection Vol. :

Sample :Coconut Oil

Solutes :Coconut Oil