

TITAN

Automation Control

Technologies



**KEEPING OUR EYE ON
YOUR SECURITY**

INDEX

| Service | Page |
|-----------------------------|------|
| Gate Automation..... | 3 |
| GSM Intercoms..... | 4 |
| Electric Fencing..... | 5 |
| Perimeter Patrol..... | 6 |
| Garage Doors..... | 7 |
| Garage Door Automation..... | 8 |
| Automated Doors..... | 9 |
| ZKBio CVSecurity..... | 11 |
| Access Control..... | 13 |
| Security Barriers..... | 15 |
| CCTV..... | 17 |
| Turnstiles..... | 19 |
| Traffic Barriers..... | 21 |



COMPANY INTRODUCTION

With over 20 years of experience in the industry, Grace Integrated Systems (Pty) Ltd emerged in 2015 from Censys Integration Technologies. By 2020, Grace Integrated Systems (Pty) Ltd evolved into a holding company, demonstrating significant growth and development.

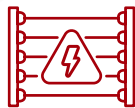
Titan Technologies, a division of Grace Integrated Systems, is a trusted provider for many large industries, estates, and body corporate management companies. We are frequently called upon to service various factories and complexes in Pietermaritzburg and surrounding areas.

In recent years, we have expanded our offerings to include electric fencing. Our dedicated team manages the installation and maintenance of electric fencing for large estates in and around Pietermaritzburg, extending into the Midlands.

Our Range of Services



Gate Automation



Electric Fencing



Garage Doors



Automated Doors



Access Control



Security Barriers



CCTV



Turnstiles



Traffic Barriers

We are an accredited installer for iMAT turnstiles, AccentroniX intercoms, Impro products and software, and Centurion gate motors, booms, garage door automation systems, and G-Speak systems.



At Titan Technologies, we are committed to staying at the forefront of technological advancements. We continuously research and offer the best solutions for our customers, supported by our dedicated customer service teams and reliable suppliers. We take pride in delivering competitive, efficient, and dependable services to the Pietermaritzburg community. All our work is carried out by our skilled in-house team, ensuring high-quality results without the use of subcontractors.

GATE AUTOMATION



Centurion - D5-Evo SMART

- Seamless Control: Easily manage your gate with a user-friendly smartphone app
- Intelligent Insights: Get advanced notifications, alarms, and monitoring to stay informed
- Uninterrupted Security: Reliable battery technology ensures operation during power outages
- Effortless Setup: Wireless configuration and smartphone control simplify installation
- Enhanced Security: Theft-resistant design and advanced position control offer peace of mind
- Ultimate Versatility: Configurable inputs and outputs integrate smoothly with your SMART ecosystem



Centurion - D10 SMART

- Supports gates up to 1t with 750 daily operations
- SMART hardware and connectivity
- Intelligent theft protection with a vibration sensor and patented theft-deterrent cage
- Extra space and accessory tray for GSM devices and more
- Sealed gearbox and secure manual release
- Die-cast aluminium gearbox and high-torque DC motor
- 24V battery backup for continuous security and convenience
- Real-time diagnostics and system health monitoring via app
- Safe, precise position control using Hall Effect technology
- Enhanced wire routing
- SMART universal controller

Centurion - Vantage



- Exceptionally easy system setup via LCD user interface
- Supports inward- and outward-opening gates without needing mechanical endstops
- High push force
- Full position control
- Fast operating speed, with smooth acceleration and deceleration
- Safe anti-crushing protection
- Multiple operating features including Intruder-detection Alarm Modes (a world first)
- Onboard CENTURION code-hopping multichannel receiver
- Battery backup for operation during power failures

GSM INTERCOMS



Centurion - G-SPEAK ULTRA

- Calls directly to your fixed line or cell phone
- Missed-call and please-call-me access control
- Main and pedestrian gate outputs
- Free welcome SMSs to new users
- 10 000 programmable users
- Access control reports by email
- Secure online programming
- Advanced audio DSP
- High quality 316 marine grade stainless steel
- Security screws
- Size: 184 x 135 x 71mm



AccentroniX - GSM Mini Intercom

- Calls directly to your fixed line or cell phone
- No more lost or stolen remote controls
- 10 000 programmable users
- Free welcome SMSs to new users
- Easy to use online management website
- Missed-call and please-call-me access control
- Main and pedestrian gate outputs
- Advanced audio DSP
- Size: 184 x 135 x 71mm



ELECTRIC FENCING



JVA - ZLM4 Low Voltage 4 Zone Monitor

The JVA ZLM4 is a 4 zone low voltage electric fence monitor. The ZLM4 may be used by itself or in conjunction with a number of high voltage security electric fence Energizers. The ZLM4 monitors up to 4 loops of fence wire, each up to several hundred meters long, to detect someone tampering with the fence by cutting or shorting the wires using intrinsically safe, isolated Extra-Low Voltage (ELV) DC.



JVA - Z14, Z18 Energizers

The JVA Z-Range of One-Zone Security Energizers with LCD displays are top-of-the-range energizers meeting all requirements from the basic home security fence to fully integrated high-profile installations. These energizers have LCD displays showing out and return voltages, battery condition and fence programming settings. The units are fully compatible with the Z-Range keypad and when wired up to a keypad are fully programmable. The energizers can be networked with other Z-Range energizers to synchronise pulses and become a multi-zone group for larger sites where many zones are required. These energizers can be controlled by a PC or up to 3 keypads or 1 keypad up to 14 Z-Range energizers.



JVA - Z28 Standard Energizer

The JVA Z28 Two-Zone Security Energizer with LCD display is a high-powered unit designed for precise zone identification in installations ranging from long wall-top fences to industrial sites. It features an LCD display for showing zone voltages, battery status, and programming settings. Compatible with the optional Z-Range keypad, it can be fully programmed and linked with other Z-Range energizers for multi-zone setups. The Z28 can be controlled via a PC or up to three keypads, with a single keypad capable of managing up to 14 Z-Range energizers.

PERIMETER PATROL

JVA - Perimeter Patrol Monitoring Software

Perimeter Patrol™ adds PC connectivity, communications and control to your security electric fence, giving you the peace of mind that comes from being able to check that your fence is working wherever you are.

Perimeter Patrol™ runs on a standard Microsoft Windows PC connected to JVA Security Electric Fence Energizers via PAE223 (USB), PAE100 (RS485) or PAE212 (TCP/IP Ethernet) adaptors.

JVA Perimeter Patrol™ can be used to quickly view the status and voltages of electric fences and devices; alert and email the user when the fences, gates or other devices need attention; arm and disarm electric fences according to a custom schedule and remotely access electric fence systems. Icons representing the energized zones are positioned over an image of the site map. Status and voltage information from the various zones throughout the site are updated in real time from a remote or central location. The PC speaker or external Input/Output Interface Board can be used to generate an audible alarm.

Features:

- View & Control Energiser Zones
- View & Control Zone Monitors
- Support Multiple Sectors Per Zone
- Map-Oriented Zone Mimic Screen
- Automatically Control on Schedule
- Alarm Display and Sound
- Email on Alarm
- Serial Communication Mode
- Ethernet (TCP/IP) Communication Mode
- User Authentication
- Full Screen Mode Preventing Access to Other Applications
- Event Logging with Viewer and Automatic Archival
- Administrator's Full System Controller



GARAGE DOORS



Steel Sectional Garage Doors

Titan Technologies offers secure and durable garage doors with double skin construction and foam-filled options for added strength and thermal efficiency. These doors operate quietly, are easy to clean, and feature a proprietary hinge technology for long-lasting performance. The company also provides customisable window designs that improve energy efficiency and enhance the appearance of properties. Their sectional doors are known for smooth operation, increased headroom clearance, and space optimisation, available in both foam-filled and open-back versions, contributing to a property's value and architectural appeal.



Wooden Garage Doors

Titan Technologies offers wooden garage doors in various sizes, styles, and finishes, including solid meranti, which enhance the appearance of any home with their natural beauty. The doors are treated with clear oil to highlight the grain of the wood and are available in slatted or panelled designs. Standard single or double sizes are in stock, and custom sizes can be made on request. It's important to note that these wooden doors require oiling six weeks after installation and then every three to four months to maintain their condition.



Steel Roll-Up Garage Doors

Titan Technologies installs high-quality, secure steel roll-up garage doors that are ideal for space-saving needs. These doors are easily automated for added convenience and come with a superior double-throw lock made from round steel tubing for enhanced security. The fully encased design not only improves appearance but also enhances child safety, extends the door's life, and increases reliability. Made from 0.4mm Aluzinc for corrosion resistance, the doors feature a unique "roll over lip" that boosts wind resistance, making them particularly effective in areas with strong winds and deterring theft.

GARAGE DOOR AUTOMATION



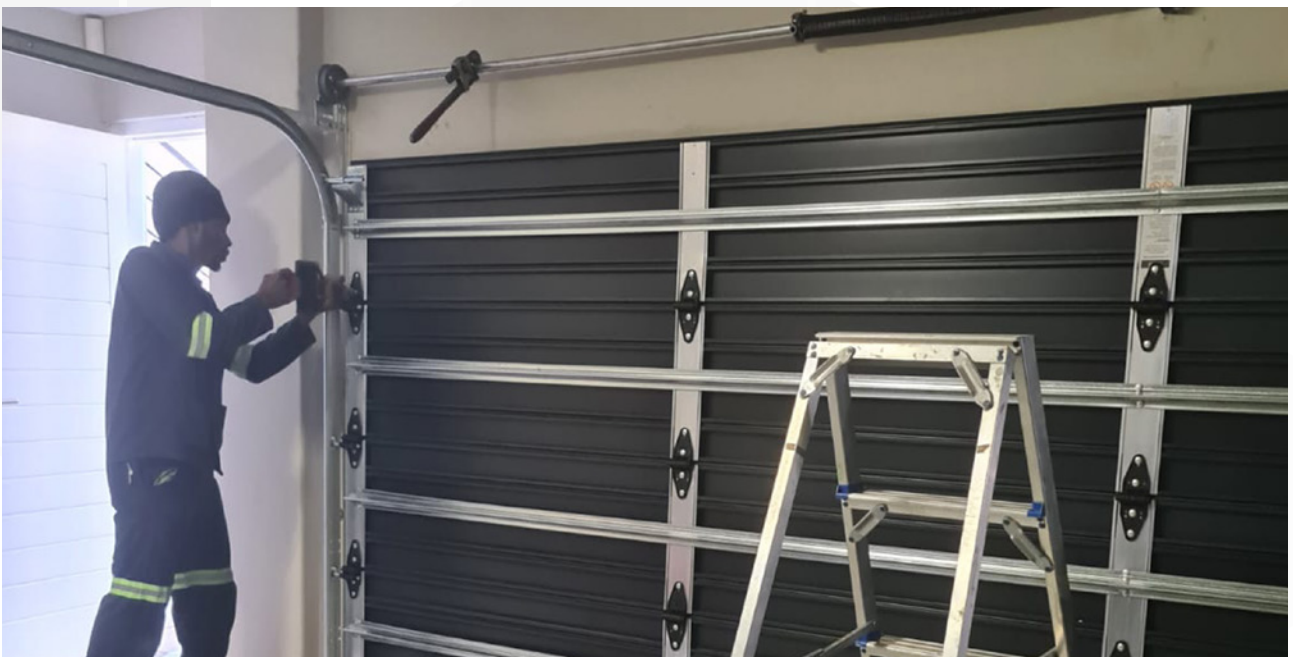
Centurion - SDO4 SMART Garage Door Motor

Experience intelligence in motion with the SDO4 SMART garage door operator, boasting whisper-quiet operation thanks to its state-of-the-art mechanical design, extended battery life for uninterrupted convenience during power outages and our pioneering SMART technology for quick and easy setup.



Centurion - RDO II Garage Door Motor

This is the way we roll! With our RDO II roll-up garage door motor that is. A 24V DC high-torque motor, operating so quietly you'll need to look at the door just to be sure that it's moving. With an RDO II not even power outages can close you down. Its reliable battery backup will keep you coming and going like there's no tomorrow. All this opening and closing had better be safe and secure. Utilising CENTURION's ultra-secure code-hopping remote controls, and coupled with its anti-crushing sensitivity, the RDO II has you covered.

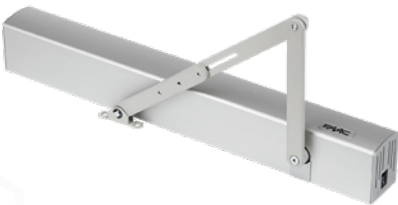


AUTOMATED DOORS



FAAC - 950N Swing Doors

The FAAC 950N automated system with integrated spring opens and closes doors smoothly and quietly. It can be installed on the lintel or directly onto the door structure, ensuring compatibility with previous 950BM BSM models. The housing is available in anodised aluminium or moulded ABS, with space for a passive infrared sensor. The 950N can also automate double-leaf entrances by linking two units in a master-slave configuration, allowing both leaves to be moved by a single system.



FAAC - 951N Swing Doors

The FAAC A951 automated system controls door opening and closing with silent and smooth operation. It allows users to easily open doors via a button, sensor or a remote control. Thanks to the PUSH&GO function, just a touch completely opens the door.

The housing cover is made from anodised aluminium that complements its aesthetics. The A951 automated system is also able to automate double-leaf entrances by interfacing the two units in a master/slave configuration. The double leaf will be driven by a single automated system for the highest degree of synchronisation of the leaves guaranteed through CAN BUS communication.



FAAC - A1000 Sliding Doors

Thanks to its compact dimensions, the FAAC A1000 system can be adapted to suit virtually any type of architectural environment, even in limited space conditions. All the most innovative technical features in just a few centimetres. For the utmost versatility of use, the A1000 Series can be adapted to sliding doors with single leaves with a maximum weight of 110kg or with double leaves with maximum weight of 70kg per leaf.

A microprocessor verifies in real-time all door activities and guarantees intelligent control. The operation logic can be selected by means of a functions keypad.

AUTOMATED DOORS



FAAC - A1400 Sliding Doors

The first automated system for sliding doors designed to meet the needs of the market as well as protect our environment. Thanks to the system's innovative "Energy Saving" device it identifies the direction of transit and perfectly optimises opening/closing times to avoid unnecessary air dispersion, even in the event of sideways transit. This device allows energy saving and optimises sudden temperature changes in the room and in the vicinity of doors. All in absolute safety.

The A1400 Air features an ethernet interface for setting the operating parameters of the automated system and viewing the fault diagnostics with a PC connected to the network.



ZKBio CVSecurity

All-in-One Biometric Security Advanced Solutions



ZKBio CVSecurity provides a comprehensive web-based security platform with the adoption of hybrid biometric and computer vision technology. It contains multiple modules: Personnel, Time & Attendance, Access Control, Visitor Management, Parking, Elevator Control, FaceKiosk, Video Management, Mask and Temperature Detection, Online/Offline Consumption, Guard Patrol, Intelligent Video Analytics, Locker Management, Intrusion Alarm, Service Center, and other smart sub-system.

The platform adopts micro-service development framework with robust system performance characteristics, such as high availability, scalable modules, fully secure communication, and solid third-party integration scalability.

By taking full advantage of our extensive experience in the access control industry, ZKTeco integrates video surveillance and smart analysis to study real-time video content and collect meta data to create an effective early warning system and issue a prompt response. So that ZKBio CVSecurity offers a precise verification after the incident, establishing a practical security ecosystem. The system ensures safety protection for people, vehicles and properties.

ZKBio CVSecurity attained ISO certifications for information security management and data protection measures.

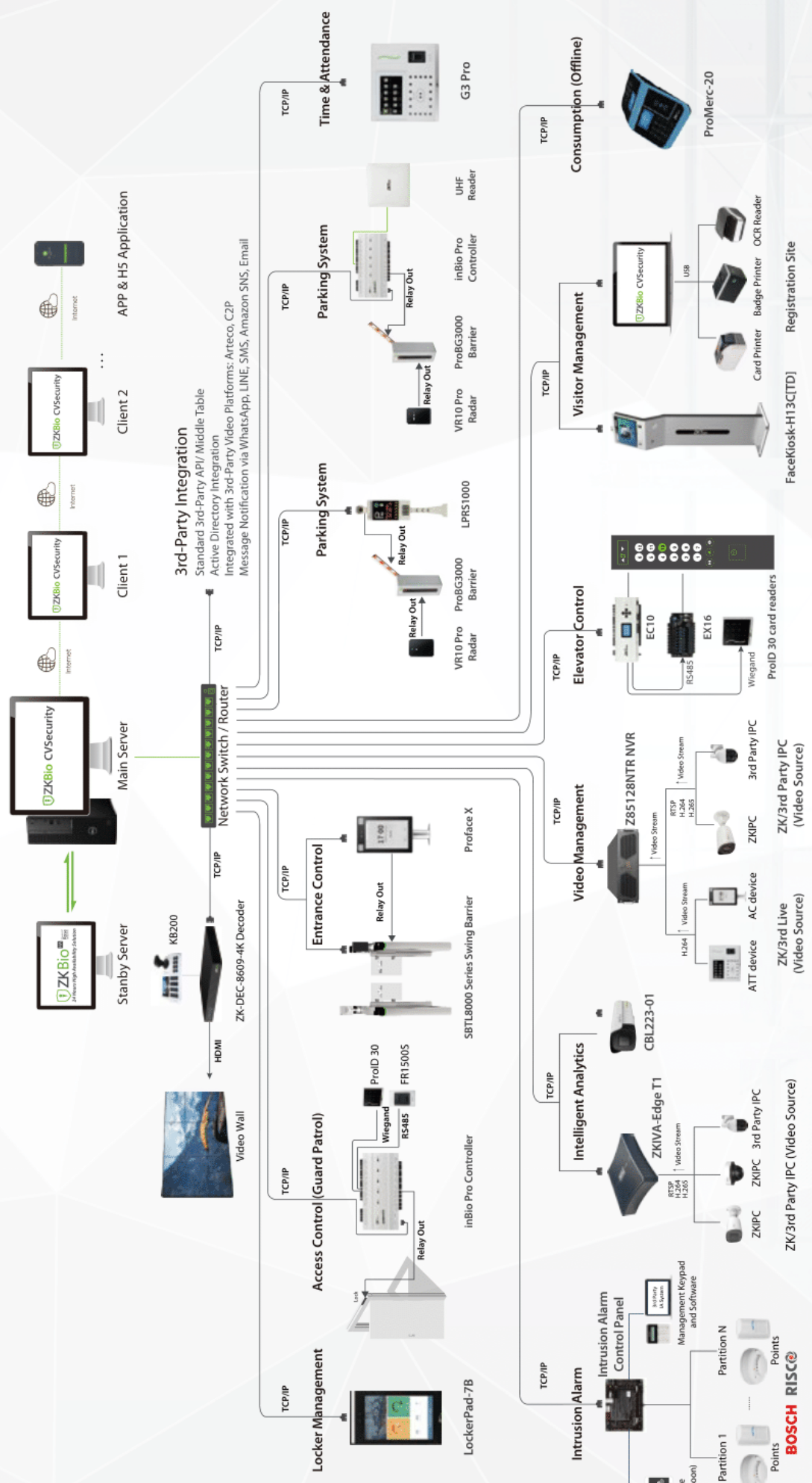
ZKBio CVSecurity is compliant with ISO/IEC 27001:2013, ISO/IEC 27701:2019 & ISO9001.

Furthermore, ZKTeco's after-sales service attained a high standard and reached ISO20000.

Features

- | | | | |
|--------------------------------|--|--|--|
| Web Application | Multi-point Deployment | Flexible 3rd-Party System Integration | High Availability ZKBio HA Integration |
| Visual Data Panel | Scramble(Dynamic) QR Code Credential | Mask & Temperature Detection Supported | Visible Light Facial Recognition |
| Video Patrol | Global Anti-Passback and Linkage | Entrance Terminal Management | LPR Camera for Parking |
| Flexible Elevator Control | Smooth and Advanced Visitor Management | Self-Service Visitor Management | WhatsApp, LINE, SMS, Amazon SNS Notification |
| FaceKiosk Information Screen | Time & Attendance | Professional Video Management System | Intelligent Video Linkage |
| Personal Trajectory | Intelligent Target Search | Smart Camera Perimeter Protection | People Counting |
| Smart Camera Tailing Detection | Smart Camera Personnel Control | Smart Camera Attendance Checking | GIS Map |
| Microsoft Active Directory | Card Printer | OCR | Consumption Management (Online & Offline) |

System Topology



ACCESS CONTROL



ZKTeco

ZKTeco is a global leader in biometric and security solutions, offering advanced products for identity verification, access control, and smart office environments. Their solutions integrate cutting-edge technologies such as facial recognition, fingerprint scanning, and palm vein recognition, enhancing both security and operational efficiency. With applications ranging from time attendance management to comprehensive security systems for homes and businesses, ZKTeco's innovations cater to a variety of industries. Their focus on AI-driven technology and smart integration makes them a key player in the modern security and automation landscape.



Impro Technologies

Impro Technologies is a leading innovator in access control solutions, specialising in RFID technology. With over 30 years of experience, the company provides state-of-the-art systems for residential estates, education facilities, and enterprises. Their offerings include a wide range of software and hardware products, from access control readers to sophisticated credentials, ensuring security across various industries. Serving over 65 countries, Impro Technologies continues to pioneer cutting-edge solutions that support organisations in enhancing security and efficiency. They prioritise reliability and durability, with products designed for long-term performance.





**KEEPING YOU
AND YOUR HOME
PROTECTED**

SECURITY BARRIERS



Limax - D14 Security Gate

- Easy sliding security gate
- No rust
- Our strongest security gate
- 10 Year Guarantee
- Low maintenance
- Quality powder coated



Limax - SU20 Security Gate

- Value for money security gate
- No rust
- Casual security gate
- 10 Year Guarantee
- Low maintenance
- Quality paint finish



Limax - RS 20 Swing Gate

- DIY Installation
- Light weight
- 2 Year Guarantee
- Retracts easily and fold away
- Available in brown or white

SECURITY BARRIERS



Limax - Swing Gate

- Double doors and passages gate sizes
- No rust
- Strong and durable
- Slam lock
- Double lock option



Limax - Monkey Proof Gate

- Keep monkeys out
- No rust
- 10 Year Guarantee
- Low maintenance
- Quality powder coated finish



CCTV



Hikvision - 4 MP IR Fixed Bullet Network Camera

- Max. 2688 × 1520 @ 25fps
- 2.8 mm/4 mm/6 mm fixed lens
- H.265, H.264
- 120dB WDR
- False alarm filter by target classification
- Powered by Darkfighter
- 12 VDC & PoE (802.3at, class 4)
- IR range: Up to 50 m, 80 m, optional
- Support on-board storage, up to 128 GB
- IP67
- BLC/3D DNR/ROI
- Colour: 0.007 Lux @ (F1.2, AGC ON), 0.012 Lux @ (F1.6, AGC ON)



Hikvision - Thermal & Optical Bi-spectrum Network Stable PTZ Camera

- Leading image processing technology: Adaptive AGC, DDE, 3D DNR, NETD < 40mk (@25°C, F#=1.0)
- Smart tracking, Panorama tracking, Event and Multi-scene patrol tracking
- Smart tracking linkage: thermal view and optical view
- Powerful behaviour analysis algorithm: Line crossing, Intrusion, Entrance & Exit
- Reliable temperature exception alarm function
- Advanced fire detection algorithm
- 640*512 resolution, high sensitivity sensor, support contrast adjustment
- Support shutter adjustment in various modes
- 3D DNR, 15 palettes of colour adjustable, image detail enhancement

HIKVISION®

CCTV



Hikvision - DIS & PICADIS Camera

- Compact design
- DIS sensor
- Auto white balance, auto gain control and electronic shutter control
- OSD menu
- IR cut filter with auto switch
- Built-in microphone
- Internal synchronization
- 3-axis (pan/tilt/rotation) positioning allows adjustment for optimum surveillance angles and position
- Impact Protection: IEC60068-2-75 test, Eh, 50J; EN50102, up to IK07

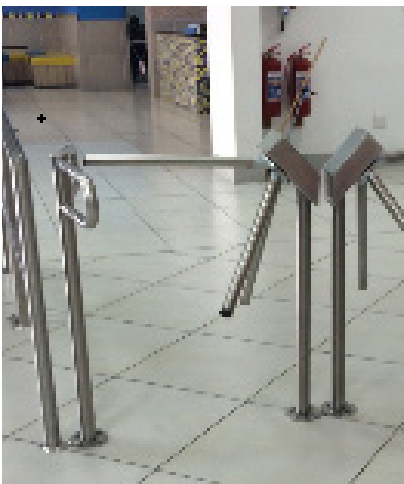


TURNSTILES



iMAT - Single and Double Waist High Turnstile

Waist High Turnstiles are available in a single and double option. They are suitable for handling large volumes of people when installed at the entrances to offices, metros, industrial premises and airports. iMAT's turnstiles can also be integrated with keypads, code locks, card readers, biometric devices and other access control systems.



iMAT - Side Winder Turnstile

Sidewinder Turnstile boasts high-end quality with style. These turnstiles can be installed in environments where low security access is needed. Sidewinders can be installed in indoor and outdoor environments, and are mostly installed in leisure areas, they also fit perfectly as an economical option for entrances or exits for office buildings and various other environments.



iMAT - Single Full Height Turnstile with Cage

iMAT's range of turnstiles are designed for environments which require a high degree of security. Our turnstiles are the perfect solution for crowd control, ensuring safety, convenience, and security. They are durable, weather resistant and come with smooth, reliable operation. iMAT's turnstiles can be integrated with keypads, code locks, card readers, biometric devices and other access control systems.

TURNSTILES



Single and Double Pedestrian Barrier

iMAT's single and double pedestrian barriers are suitable for exit and entrance points in monitored environments such as the entrances to offices, metros, industrial premises and airports. iMAT's pedestrian barriers can be integrated with keypads, code locks, card readers, biometric devices and other access control systems.



TRAFFIC BARRIERS

Centurion - SECTOR II



- Battery backup
- Rapid boom pole raising (<1.2 seconds for 3m)
- Smooth, intelligent speed control
- High-torque pole operation
- LCD interface for easy setup
- Onboard multichannel receiver with selective add/delete
- Integrated timer functionality
- Pre-galvanised enclosure for corrosion resistance (mild steel variant)
- Powder-coated aluminium lid with moisture protection
- Easy AC/DC isolation
- Available in 3 colours, with a premium on gunmetal grey

Centurion - CLAWS



- Modular system ensures stock continuity
- High-torque DC motor ensures reliability and responsive operation
- Offers high security and safety modes
- Battery backup ensures operation during power outages
- Four configurations to fit various applications
- External limit switches for failsafe operation
- Indirect drive models work independently of barrier units
- Adjustable orientation for traffic flow
- Supports robot interface output
- Variable models with adjustable speed for different installations

Centurion - TRAPEX



- Modular sections length: 1.5 metres, pre-assembled.
- Vertical members: six per 1.5m length @ 250mm spacing.
- Vertical member length that extends above barrier pole: 95mm.
- Vertical member length below barrier pole: 692mm.
- Fence members: Ø19 aluminium round tube.
- Mass: 1.3kg/m (1.5m module = 2kg).
- Aluminium flatbar section: 25mm x 5mm.
- Rivets used to fit the aluminium flatbar: 5mm.
- It's advisable to lubricate the moving parts of the linkage assembly with easy to obtain Q20.

TRAFFIC BARRIERS



Centurion - Midi Traffic Light

- Pedestal- and wall-mount configurations available – allows traffic light to be used alongside traffic barriers, sliding gates or virtually any automated access system
- Exceptionally easy assembly
- Impressive lifespan – approximately 50 000 hours
- Flexible input voltage range
- Durable aluminium construction
- Compact design
- High-quality LEDs visible in bright and low-light conditions
- Low power consumption – <6 watts
- Wing brackets allow traffic light to swivel left and right



Centurion - CENTINEL

- Internal spring counterbalance: Ensures a sleek design and makes raising and lowering nearly automatic.
- Professional, compact appearance: Slim and stylish, it seamlessly blends into modern business parks.
- Comfortable operating handle: Designed for easy, comfortable handling—no tough grip required.
- Simple locking system: A convenient thumbwheel locks the pole in place, even during heavy traffic.
- Strong and durable: Built to withstand tough conditions while remaining responsive to the operator's touch.



Address:

3 Chasedene Road, Chasedene,
Pietermaritzburg, 3201

Email:

info@titantech.co.za

Phone:

033 394 3776
072 191 6415

After-Hours:

082 376 8657

Website:

www.titantech.co.za