

HLB Life Science Medicare





**We
Create
Customers
Trust.**

OVERVIEW

Company Overview



Company	HLB Life Science Co.,Ltd.
Established	July 24, 1998
Representatives	Sang-woo Nam, Yong-hae Han
Business Division	Medicare Division
Division Head	President Yong-ho Cho
Website	www.hlb-lsmc.com
Main Business	Diagnostic medical device and components, OEM/ODM buisness

OVERVIEW

HLB Group



Human Life Better



Pharma · Bio

HLB Life Science Co., Ltd.

Medicare Division

Elevor Therapeutics

Immunomic Therapeutics

Verismo Therapeutics

HLB Therapeutics

HLB Pharma

HLB Cell

HLB Bio-step

Shinhwa Advance Co., Ltd.

HLB Science

HLB Healthcare

HLB Panagene



Ship · Plant · Energy

HLB Global

BADA Heavy Industries Co., Ltd.

HLB Networks Industries Co., Ltd.

HLB Energy Industries Co., Ltd.



Life / Health / Leisure

HLB Life & Healthcare

Freshico

Hyundai Yachts

Penguin Ocean Leisure Industries

Finance

HLB Investment

OVERVIEW

HLB's ESG

HLB's ESG management begins with recognizing the essence of our business as an opportunity to create social value beyond simply responding to risks or regulations. Through innovative technology and production infrastructure, we protect humanity from public health crises and contribute to improving health.

We will continue our efforts to become a sustainable company that pursues the happiness of our stakeholders, including the local community.



HLB LIFE SCIENCE CO LTD (GROUP)

Suwon - South Korea | Scientific research and development

Company size: M | Assessment scope: Group

Overall score

↗ **54**/100

Percentile

55th

Overall score

Percentile
55th

↗ **54**/100



Environment

Medium impact on score



Labor & Human Rights

High impact on score



Ethics

Low impact on score



Sustainable Procurement

Low impact on score



Mission

A global Pharma / bio company growing into a global healthcare company

Vision

Providing growth solutions that continuously create the best future value by creating synergies and maximizing profits in the pharmaceutical and bio business of the HLB Group

ESG Vision

Practical business ethics, mature corporate citizenship, warm capitalism

ESG Direction

- * Establishment of eco-friendly management system
- * Pursuit of stakeholder happiness
- * Sustainable and Building transparent governance

ESG Goal

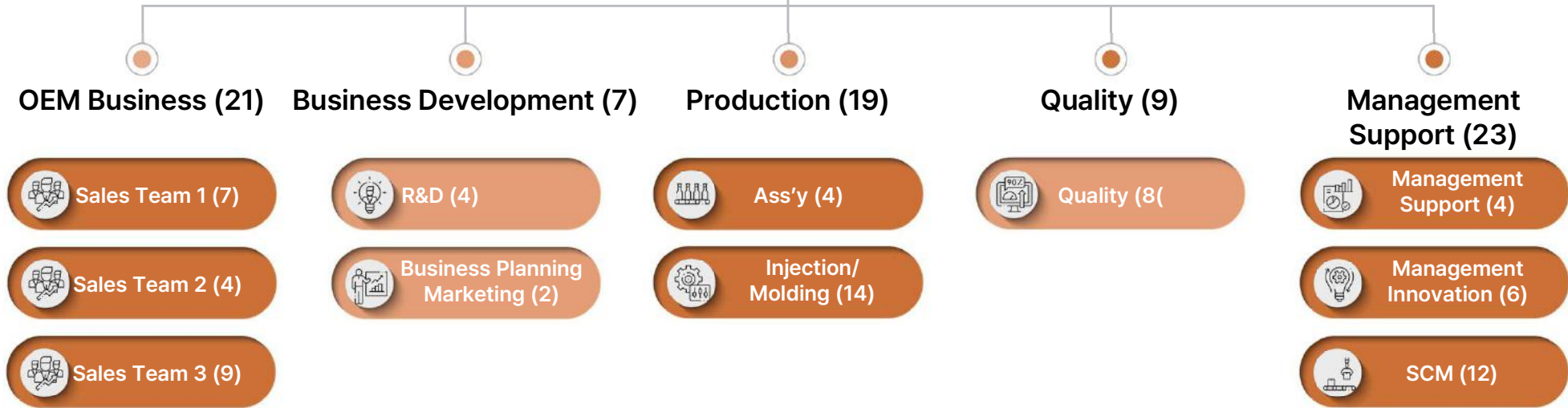
- * Advancement of environmental management system
- * Building a climate change strategy
- * Expansion of talent / compliance management
- * Social value creation
- * Internalization of ESG management
- * Reinforcing board – centered management

Organization



HLB Life Science

Medicare Division
(57)



OVERVIEW

Company Facilities



HLB Life Sciences Medicare Suwon Office

803, 101-dong, 88 Sinwon-ro, Yeongtong-gu, Suwon-si, Gyeonggi-do



HLB Life Sciences Medicare Headquarters

104 Yongmeorikeun-gil, Anseong-si, Gyeonggi-do

OVERVIEW

Certifications



CE



FDA



ISO9001



ISO13485



ISO45001



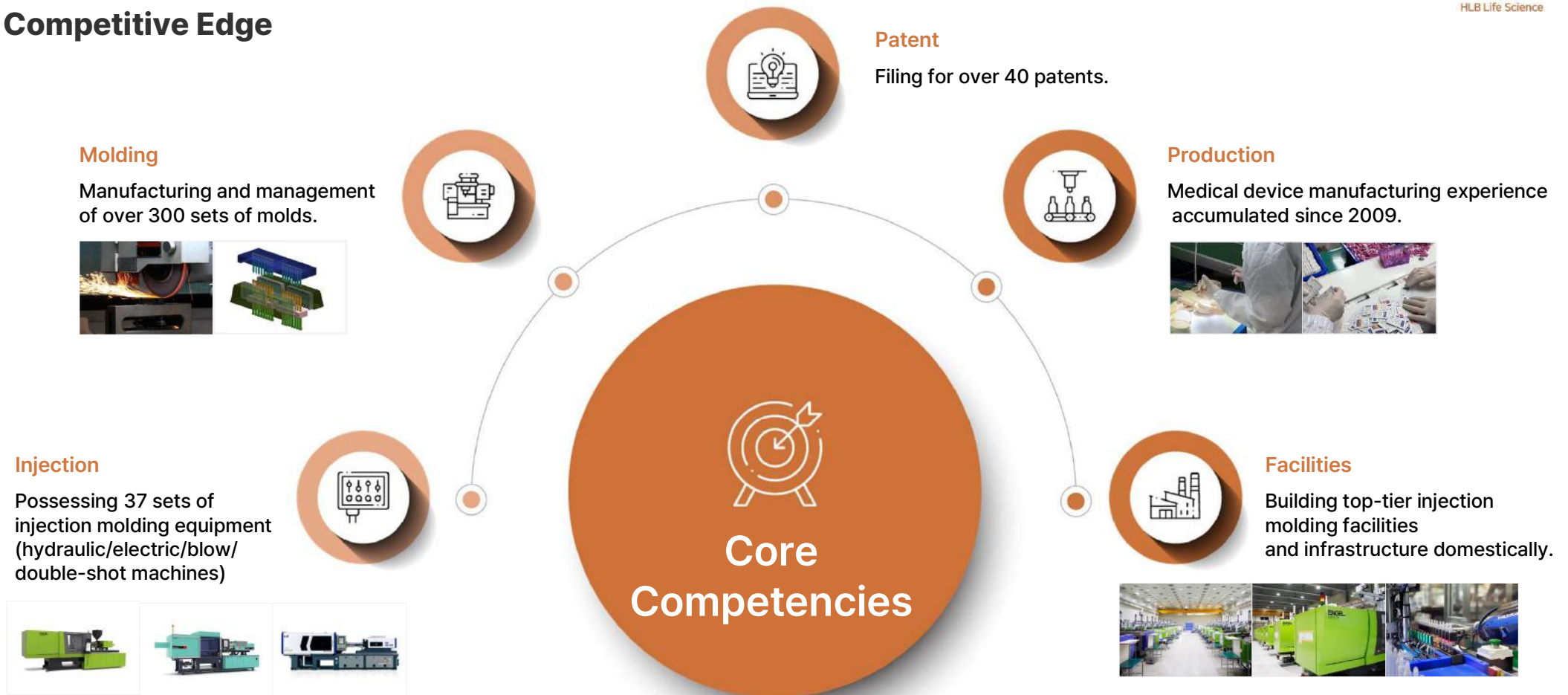
KGMP



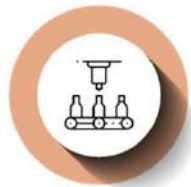
IATF16949

OUR BUSINESS

Competitive Edge



OUR BUSINESS



OEM/ODM Business

- Rapid Diagnostic Products
- Cosmetic Case
- Medical Device Components
- Electronic components
- Injection mold design and fabrication



Medical Device Business

- Composite products (syringe + foam)
- Filter syringe
- Safety syringe



Medi-Supply Business

- Regional hub hospital supply network distribution



Consulting Business

- GMP consulting
- GEP consulting
- Validation consulting



Brand Business

- B2C-based baby products
- Medical device + baby products development

OUR BUSINESS

OEM/ODM BUSINESS

Business Start Year

2009

Main Fields

In-Vitro Diagnostics(IVD), Medical,
Cosmetic, F&B, Electronic

Competitive Edge

Equipped with a mass production system
including Ass'y, plastic mold, and injection
technologies
Providing Total-Solution through One-Stop
Process

Key Certifications

ISO 13485, ISO 9001, ISO 45001, KGMP,
CE/IVDR, FDA

Copyright 2025. HLB Life Science. all rights reserved.



Business Area



Our Final Customer



Abbott

SD BIOSENSOR



SAMHWA



OUR BUSINESS

PRODUCT INFORMATION

Copyright 2025. HLB Life Science. all rights reserved.



Mini-Tip R type

R-type Mini tip consists of simple tips and silicon plunger, patented for capillary action in large blood volume and optimized for blood collection and dispensing.

The tip has a patented design that avails 10 μ l, 20 μ l, 50 μ l of capillary action and feature prevention of unintended actions.



Mini-Tip Q type

Mini Tip Q-type is a varied design from the Inverted Cup Blood Transfer Device that enables intuitive and fast blood collection and dispensing when used in the Rapid Kit Device starting from 10 μ l



Mini-Tip QP type

Mini tip QP type is a varied design from the Inverted Cup Blood Transfer Device that enables intuitive and fast blood collection and dispensing.

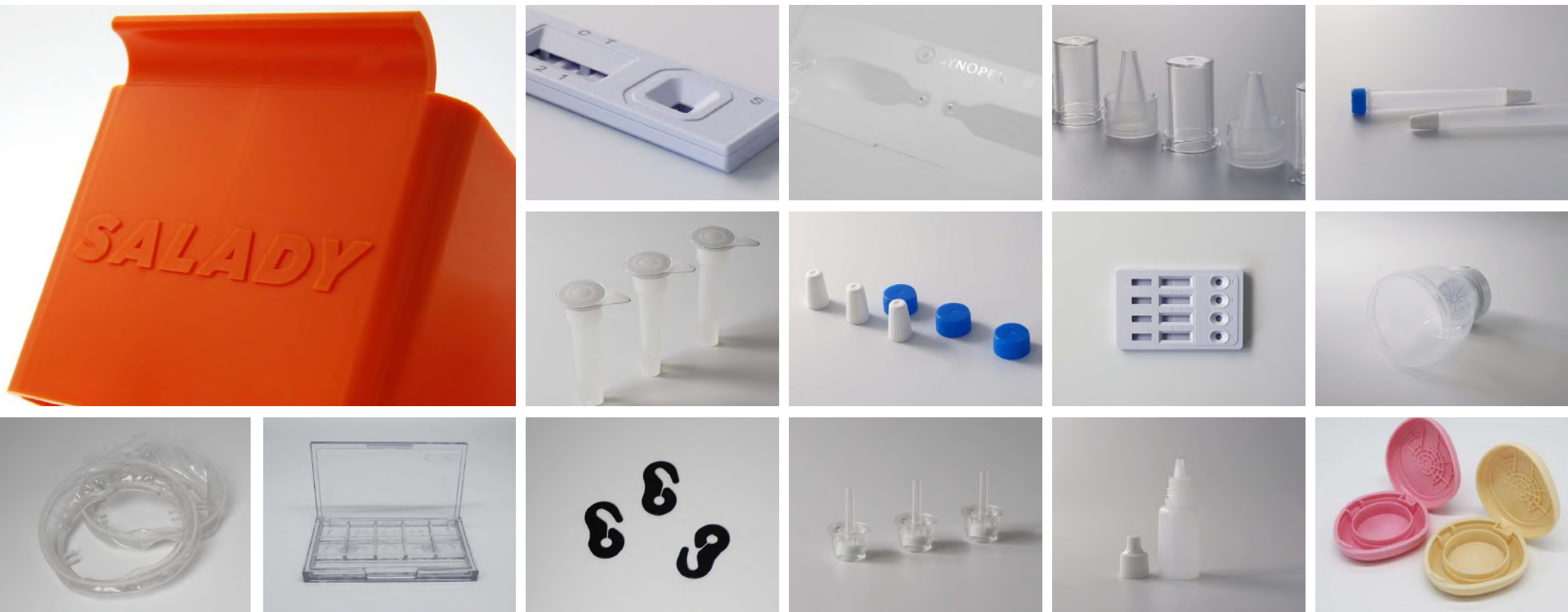
A plunger may be utilized when the blood dispensing area is limited in size.

OUR BUSINESS
Portfolio

Copyright 2025. HLB Life Science. all rights reserved.

OUR BUSINESS

Portfolio



OVERVIEW

Injection Development PROCESS



Application of polymer material and thermodynamics-based mold design,
injection process technology.



**Understanding of
product concepts**



**Material and
process selection**

Material selection /
Injection method
selection



**Mold fabrication
and trial injection**

Process conditions,
Material conditions
Usage, Tack time



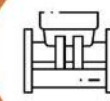
Defect analysis

Injection process
Product defects

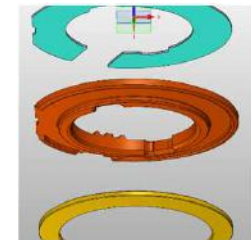


Mold design

Number of molds
Design considering
product
characteristics



**Mold fabrication
and injection
process**





OVERVIEW

Possessing injection molding equipment

■ Two-shot molding machines



Brand	Sumitomo
Capacity	230Ton
possessed	3

■ Blow molding machines



Brand	ENGEL / LS Mtron
Capacity	120 · 150Ton
possessed	4

■ Hydraulic and electric injection molding machines



Brand	Woojin Plaimm
Capacity	160 · 170 · 200Ton
possessed	14



Brand	ENGEL
Capacity	120 · 160Ton
possessed	16

OVERVIEW

Production Equipment Inventory

POCT Dispensor



Semi-Auto Dispensor



Laser marking machine



Equipment	Owned	Production Output (per 8-hour day)
4PARTS Dispensor	1	4,800EA
Pre-Filled Dispensor	1	23,000EA
Semi-Auto Dispensor	9	24,000EA

Equipment	Owned	Production Output (per 8-hour day)
Three-side sealing machine	5	28,000EA
POCT Dispensor	1	43,200EA
FOB Dispensor	1	33,600EA

OUR BUSINESS

MEDICAL DEVICE BUSINESS

Business Start Year

2024

Main Products

HLB MULTI SYRINGE
HLB CLEAN SYRINGE
OPI FOAM
OPI FOAM SILICONE
OPILEX INNOPAD

Competitive Edge

By collaborating with partner companies possessing excellent technology, it is possible to launch improved products by addressing the shortcomings of existing ones, enabling market entry and expansion.

Products



HLB MULTI SYRINGE



HLB CLEAN SYRINGE



OPI FOAM



OPI FOAM SILICONE



OPILEX INNOPAD

OUR BUSINESS

MEDI-SUPPLY BUSINESS

Business Start Year

2024

Main Fields

Medical Consumable / Medical Device



Business Area

- Regional hub hospitals Identify various suppliers for products needed in hospitals, and deliver through Supply Chain Management.

Our Final Customer



OUR BUSINESS

CONSULTING BUSINESS

Business Start Year

2023

Business targets

Domestic pharmaceutical / medical device companies

Competitive Edge

From validation services to manufacturing facility setup and certification,
Comprehensive service provision

Business Area

Conceptual
Design
Execution
or Review

GMP
Consulting

GEP
Consulting

Validation
Consulting

Consulting Scope



Solid dosage
form



Antineoplastic
agent



Health
functional food



Liquid
dosage form



APIs
(synthetic, fermentation,
extraction)



Medical Device



Injectable



Biopharma
ceuticals
(Vaccines)



CGMP manufacturing facility
for cosmetics and other
products



Ointment



Cell therapy
specialist

OUR BUSINESS

BRAND BUSINESS

Business Start Year

2024

Main Fields

Manufacturing/Distribution of Baby Products

Competitive Edge

Production of Pediatric (Home-Use) Medical Devices Based on Experience in Medical Device Manufacturing

Business Area

- **Manufacturing**
Development of Home-Use Medical Devices for Childcare



- **Distribution**
Discovery and Distribution of Overseas Items/Brands



**We
Create
Customers
Trust.**

HLB Life Science Medicare