



Regent
College
London

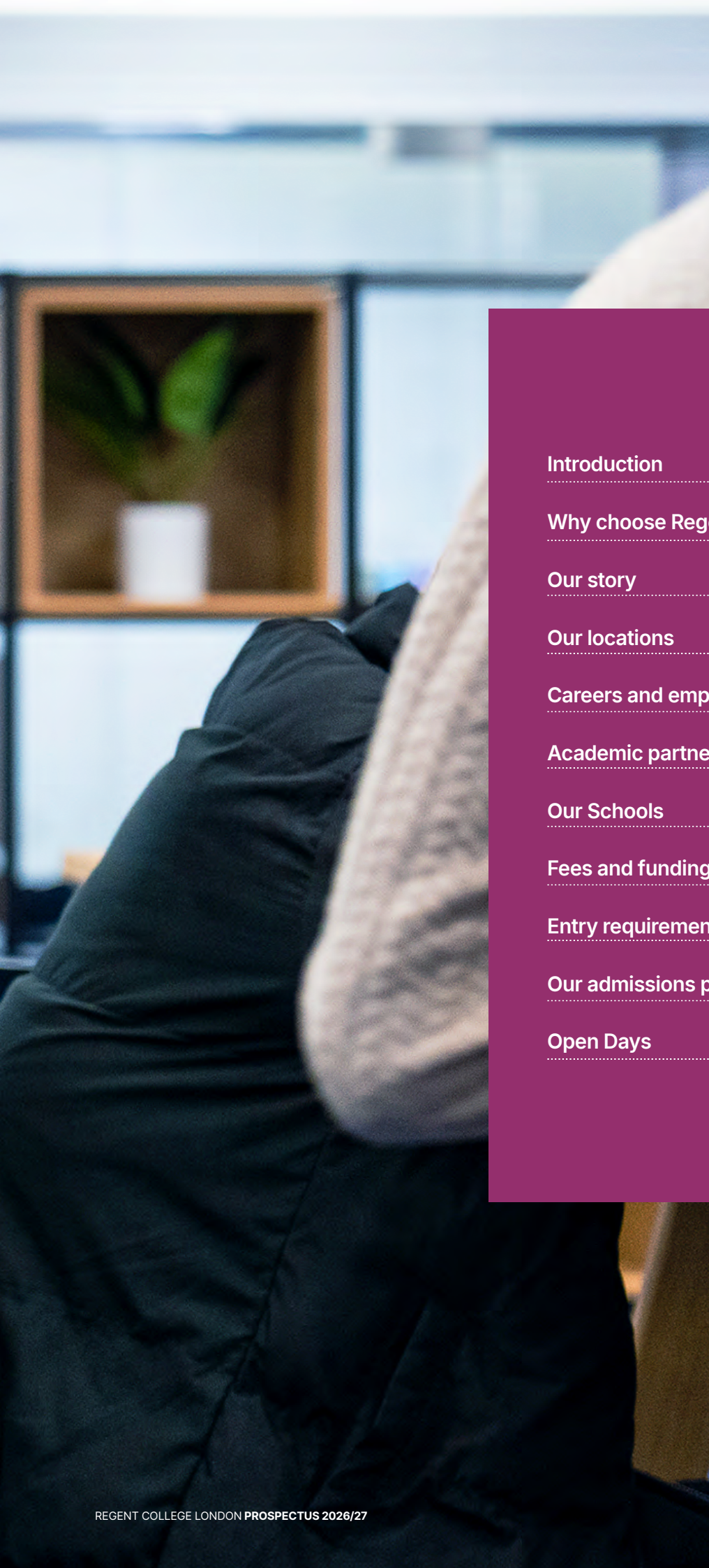
25+ years of
changing
lives



Believe it.
BUILD IT.

Prospectus | 2026/2027 academic year





Introduction	04
Why choose Regent College London?	06
Our story	07
Our locations	08
Careers and employability	10
Academic partnerships	11
Our Schools	12
Fees and funding	56
Entry requirements	58
Our admissions process	60
Open Days	61

INTRODUCTION

It is our great pleasure to welcome you to Regent College London (RCL). We are delighted to introduce you to a place where education is not just a pathway, but a transformational experience. At RCL, we understand the delicate balance between personal commitments and academic ambitions, and we are committed to supporting you every step of the way as you navigate this journey with confidence.

Our mission is simple yet impactful: to empower individuals from all backgrounds with flexible learning opportunities that allow you to broaden your horizons, reach your goals and advance your career. Whether you are embarking on a new educational journey or seeking to enhance your professional qualifications, RCL offers a diverse range of high-quality, industry-relevant programmes – from Higher National Certificates (HNCs) to master's degrees.

In collaboration with our partner institutions, our courses are developed with practical, real-world applications at the forefront. Together with our partners, we work closely with employers to ensure our curriculum equips you with the in-demand skills that are essential in today's competitive job market, boosting both your employability and career prospects.

What makes RCL truly special is not just the education we provide but the supportive community we foster. Our dedicated academic team and

comprehensive Student Support services are here to offer personalised guidance at every stage of your journey. In addition, all students have access to our complimentary Thinking into Character™ programme – a unique growth mindset course designed to foster creative thinking, build resilience and develop the character needed to succeed in your studies and beyond.

Our commitment to excellence is consistently reflected in the strong results we achieve in the National Student Survey, year after year. We take great pride in seeing our students excel, whether that is progressing in their current careers or continuing with further studies.

We warmly invite you to explore our prospectus, attend one of our Open Days and imagine the exciting opportunities that await you here at RCL. We look forward to welcoming you into our vibrant, diverse community and watching you accomplish great things as part of the RCL family.

With warm regards,

Dr Tharshiny Pankaj,
Principal

Professor Selva Pankaj,
Group Chairman, Regent Global



**PROFESSOR SELVA AND
DR THARSHINY PANKAJ**

WHY CHOOSE REGENT COLLEGE LONDON?

Flexible learning

RCL is proud to offer flexible learning schedules. Students can choose from versatile delivery modes that align with their lifestyles – including in-person delivery, synchronous online delivery or blended learning.

We offer several enrolment dates each year and multiple study locations across London for enhanced accessibility and convenience.

Career-focused learning

Our degrees are awarded by one of our respected academic partners, while our programmes are developed in collaboration with employers – focusing on practical, in-demand skills that enhance employability and support career progression.

Informed by research and relevant to the real world, RCL's courses enable students and graduates to enter the job market with confidence.

High student satisfaction

RCL consistently achieves excellent results above the UK average in the annual National Student Survey, reflecting the quality, experience and impact of our educational offerings.

Extensive student support

Our students can access a comprehensive support network designed to enrich their educational journey, including:

- Academic advice
- Study skills support
- Career guidance
- Mental health and wellbeing support
- Financial guidance, including student loan and budgeting assistance

In addition, each student is assigned a Personal Academic Tutor (PAT), who will be their main contact for all academic-related queries throughout their programme.

Value-added education

RCL students receive complimentary access to our exclusive Thinking into Character™ programme – a series of 12 online lessons specially developed to accelerate personal growth and professional success.

Designed and led by our Co-founder and Group Chairman (Regent Global) Professor Selva Pankaj, the programme is based on pioneering research into the science and methodology of personal achievement.



OUR STORY

1999

Selva and Tharshiny Pankaj start providing A-level tutoring to students who require extra support.



2000

The Pankaj family establish Regent Global. Their tutoring initiative expands from their home to a dedicated facility in Rayners Lane, north-west London.

2010

The first RCL campus is established in Wembley. The College delivers BTEC Higher National Certificates and provides students with alternative progression routes into higher education.



2013

RCL opens admissions to the public to reflect our commitment to widening access and participation.



Today

RCL now works with respected academic partners, the University of Greater Manchester and Pearson, to deliver high-quality, career-focused Higher National Certificates, Higher National Diplomas, foundation degrees, bachelor's degrees, top-up degrees and master's degrees.

OUR LOCATIONS

6 Harrow

Pankaj House, 167 Imperial Drive
Harrow, Middlesex HA2 7HD

Travel connections

Rayners Lane
Metropolitan and Piccadilly Lines
3-minute walk

Buses

398 – H9 – H12 – H10

5 Wembley

Madison House, 24-28 London Road
Wembley, HA9 7EX

Travel connections

Wembley Central
Bakerloo and Overground Lines
5-minute walk

Buses

18 – 79 – 204 – 223 – 297 – N18 – 483

4 Southall

Regent College London
39-47 High Street, Southall, UB1 3HF

Travel connections

Southall
Elizabeth Line and National Rail
10-minute walk

Buses

SL8 – 207 – 483



1 Kingsbury

Masons House, 1-3 Valley Drive
London, NW9 9NG

Travel connections

Kingsbury
Jubilee Line
5-minute walk

Buses

183 – 204 – 324

2 Fitzrovia

Regent Hill House
153 Great Titchfield Street
London, W1W 5BD

Travel connections

Great Portland Street
Hammersmith & City, Circle and
Metropolitan Lines
5-minute walk

Warren Street
Northern and Victoria Lines
7-minute walk

Goodge Street
Northern Line
11-minute walk

Buses

1 – 18 – 205 – 27 – 29 – 7

3 Holborn

2-10 Princeton St
London, WC1R 4BH

Study facilities

- IT Support Desk
- Virtual Reality Lab
- Sports and Nutrition Lab
- Electrical and Mechanical Labs

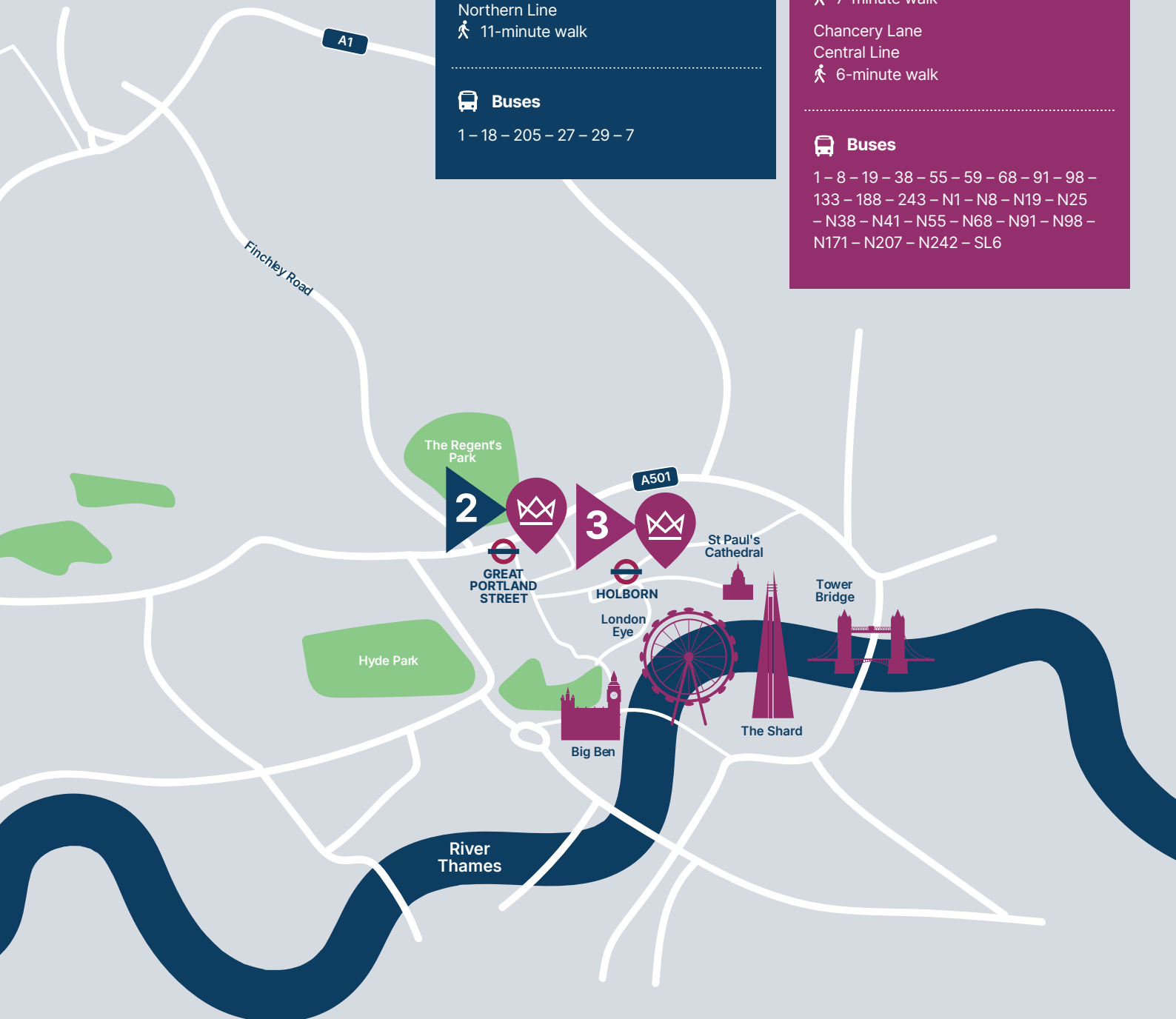
Travel connections

Holborn
Piccadilly and Central Lines
7-minute walk

Chancery Lane
Central Line
6-minute walk

Buses

1 – 8 – 19 – 38 – 55 – 59 – 68 – 91 – 98 –
133 – 188 – 243 – N1 – N8 – N19 – N25
– N38 – N41 – N55 – N68 – N91 – N98 –
N171 – N207 – N242 – SL6



CAREERS AND EMPLOYABILITY

RCL provides a rewarding student experience that develops highly valued, transferable employability skills, including communication, decision-making, teamwork and problem-solving.

In addition, our Employability and Graduate Outcomes team offer personalised support to help you achieve your professional goals, including one-to-one careers coaching.

Career Connect

Career Connect is RCL's dedicated careers and employability platform, where students can access a wide range of career tools and resources, including:

- Personalised careers coaching
- Employability skills courses
- CV and cover letter support
- Job application guidance

Engaging events

Our Employability team curates a calendar of events designed to give students a head start in the job market. These include workshops, job fairs, networking events and career talks featuring accomplished professionals sharing their insights.



ACADEMIC PARTNERSHIPS

RCL is proud to work with esteemed academic institutions that share our values and commitment to student success.

These partnerships provide our students with access to enriching opportunities and the qualifications they need to achieve their goals.

From HNCs to master's degrees, all of our qualifications are awarded by one of our trusted academic partners.

University of Greater Manchester

The University of Greater Manchester (UoGM) is known for its student-centred, industry-focused approach. Offering undergraduate and postgraduate programmes, the university prioritises hands-on learning and employability. With modern facilities, industry placements and professional accreditation opportunities, UoGM provides a supportive community and practical education to equip students with career-ready skills.

Pearson

Pearson is a well-known and respected operator in the education sector. Pearson's BTEC qualifications provide a more practical, real-world approach to learning and skills development alongside a key theoretical background in comparison with traditional academic qualifications.



BUSINESS

Welcome from the Dean



Kashif Khan
Dean of Business
MS, MSc, BCS, FHEA, Prince 2

Welcome to the School of Business (SoB) at RCL.

Established in 2010, our School offers a wide range of respected business courses, covering key areas such as marketing, business management, business administration and international management. As a student at RCL, you will delve into essential business disciplines that foster critical thinking, creativity and an understanding of the broader societal impact of business decisions.

Our programmes are designed not only to spark stimulating debates but also to nurture an interest in social justice and responsible business practices. Throughout your journey with us, you will develop advanced professional skills, preparing you to influence key decisions in today's complex and interconnected world, whether you wish to advance your own career or start your own business.

We offer HNCs, HNDs, foundation degrees, bachelor's degrees, top-up degrees and master's degrees. These courses are crafted to develop entrepreneurial leaders and innovators, equipped to navigate and excel in the globalised economy of tomorrow.

With dedicated support throughout your studies, you will have access to the skills, resources and networks needed to achieve your ambitions.

Our graduates are well-prepared for a wide variety of career paths, including advertising, marketing, finance, project management, human resources and business development.

Higher National Certificates

Pearson BTEC Level 4 HNC in Business

Higher National Diplomas

Pearson BTEC Level 5 HND in Business (Management)

Foundation Year

BSc (Hons) Business Management with Foundation Year

Undergraduate

BSc (Hons) Business Management

Top-up

BSc (Hons) Business Management (Top-up)

Postgraduate

Master of Business Administration (MBA)

MSc International Management





Pearson BTEC Level 4 HNC in Business

Course overview

Our Pearson BTEC Level 4 HNC in Business programme is an industry-focused qualification that will prepare you for a successful career by providing a solid understanding of essential business management principles and practices. Through case studies, engaging projects and group work, you will explore the real-world business situations faced by today's managers.

Modules

This list is not exhaustive. Please see the course webpage for full details.

- The Contemporary Business Environment
- Marketing Processes and Planning
- Management of Human Resources
- Leadership and Management
- Accounting Principles
- Managing a Successful Business Project
- Innovation and Commercialisation
- Entrepreneurial Ventures

Why study this course?

- ✓ Develop a solid understanding of essential business management principles and practices.
- ✓ Get personalised attention from experienced academics and friendly staff.
- ✓ Gain a globally recognised qualification.

Career progression

Upon successful completion of this one-year course, students will have strong career prospects in diverse areas of business, including advertising, marketing, project management, human resources and business development.



Course details

Awarding body
Pearson

Duration
One year

Fees
Home students: £9,790
per year

Location
Kingsbury, Wembley, Fitzrovia and
Holborn

Study mode
Full-time

► Find out more

For up-to-date information about this course, including delivery modes, please visit our website.



Pearson BTEC Level 5 HND in Business (Management)

Course overview

Our two-year HND in Business will help you prepare for a successful business career. Develop specialist knowledge, practical skills and professional confidence through real-world learning. Tailor your studies to your career goals while preparing for employment or progression to the final year of a bachelor's degree.

Modules

This list is not exhaustive. Please see the course webpage for full details.

- The Contemporary Business Environment
- Marketing Processes and Planning
- Management of Human Resources
- Leadership and Management
- Accounting Principles
- Managing a Successful Business Project
- Innovation and Commercialisation
- Entrepreneurial Ventures
- Research Project
- Organisational Behaviour Management
- Managing and Leading Change
- Global Business Environment
- Principles of Operations Management
- Business Strategy
- Planning for Growth

Why study this course?

- ✓ Develop critical, in-demand skills to succeed in today's competitive business environment.
- ✓ Progress confidently into employment or further higher education with a recognised qualification.
- ✓ Learn through an industry-aligned curriculum shaped by current professional standards.
- ✓ Benefit from small class sizes and personalised support from experienced academics.

Career progression

Upon completion, this HND can provide entry onto the final year of a range of business-related bachelor's degrees. It also equips you with the knowledge and professional skills to enter a wide range of business and management roles. Typical entry-level positions may include People and Culture Coordinator, Marketing Executive, Digital Marketing Executive, Finance Officer, Accounts Assistant, Contracts Officer and Supply Chain Executive.



Course details

Awarding body

Pearson

Duration

Two years

Fees

Home students: £9,790

per year

Location

Fitzrovia, Holborn, Kingsbury, Wembley, Southall

Study mode

Full-time

► Find out more

For up-to-date information about this course, including delivery modes, please visit our website.



BSc (Hons) Business Management with Foundation Year

Course overview

Our BSc (Hons) Business Management with Foundation Year programme covers people management, business law, marketing, strategic management, information systems, big data, project management, finance and innovation. This full-time programme develops critical thinking, problem-solving and data analysis skills to enhance employability.

Modules

This list is not exhaustive. Please see the course webpage for full details.

- Business in Practice
- World of Work
- Applied Business Finance
- Practical Digital Marketing
- Professional and Academic Skills Development
- Financial Decision Making in Business
- Business Environment
- Contemporary Issues in Marketing
- Information Systems and Big Data Analysis
- People and Performance
- Business Management and Career Development
- Leadership Management and Organisational Culture
- Project Management
- Strategic Management
- Enterprise, Innovation and Creativity
- Business Case Study Analysis

Why study this course?

- ✓ Improve your employability.
- ✓ Develop essential, in-demand skills in communication, data analysis, teamwork and problem-solving.
- ✓ Understand the business environment in local, national and international contexts.

Career progression

This foundation year course equips you with specialist knowledge and a broad understanding of business operations. Graduates gain a competitive edge in the job market or entrepreneurship, ready for diverse roles or further studies in marketing, finance, HR, computing or international business.



Course details

Awarding body

University of Greater Manchester

Duration

Four years

Fees

Home students: £9,790
per year

Location

Holborn, Fitzrovia, Southall,
Wembley or Kingsbury

Study mode

Full-time

► Find out more

For up-to-date information about this course, including delivery modes, please visit our website.



BSc (Hons) Business Management

Course overview

Our BSc (Hons) Business Management programme will prepare you for a global career, covering people management, business law, marketing, strategic management, information systems, big data, project management, finance and innovation. The course develops key employability skills like critical thinking, problem-solving and data analysis.

Modules

This list is not exhaustive. Please see the course webpage for full details.

- Professional and Academic Skills Development
- Financial Decision Making in Business
- Business Environment
- Contemporary Issues in Marketing
- Information Systems and Big Data Analysis
- People and Performance
- Business Management and Career Development
- Leadership Management and Organisational Culture
- Project Management
- Enterprise, Innovation and Creativity
- Business Case Study Analysis

Why study this course?

- ✓ Develop sought-after skills in communication, analysis and problem-solving.
- ✓ Enhance your employability.
- ✓ Understand the business landscape in a local, national and international context.
- ✓ Gain highly transferable skills.

Career progression

Our three-year BSc (Hons) Business Management course prepares you for general management and specialisations in business accounting, finance, enterprise, HR management, business law, marketing, retail or supply chain management. This degree equips you with essential skills to thrive and adapt in a changing world.



Course details

Awarding body

University of Greater Manchester

Duration

Three years

Fees

Home students: £9,790
per year

International students: £17,500
per year

Location

Holborn, Fitzrovia, Southall,
Wembley or Kingsbury

Study mode

Full-time

► Find out more

For up-to-date information about this course, including delivery modes, please visit our website.



BSc (Hons) Business Management (Top-up)

Course overview

Our BSc (Hons) Business Management (Top-up) programme will equip you with essential skills – whether you are looking to pursue a career in business or advance in your current career. Discover key concepts such as people management, business law, marketing, strategic management, information systems and big data, project management and finance.

Modules

This list is not exhaustive. Please see the course webpage for full details.

- Business Project
- Dissertation
- Strategic Management
- International HRM
- Learning and Development
- Work and the Employment Relationship
- E-Commerce and Contemporary Marketing Practice
- Global Consumer Behaviour
- Integrated Digital Marketing Strategy
- Retail Management
- Advanced Data Analytics
- Information Security and Risk Management

Why study this course?

- ✓ This course is ideal if you are looking to pursue a career in business or advance in your current career.
- ✓ The course is designed to help you to understand the business environment and the needs of employers in local, national and international contexts.
- ✓ Develop highly sought-after skills such as communication, data analysis, time management, team working and problem-solving.

Career progression

The BSc (Hons) Business Management Top-up course offers you a route into general management as well as specialist areas, such as business accounting and finance, enterprise, human resource management, business law, marketing, and retail or supply chain management.



Course details

Awarding body

University of Greater Manchester

Duration

One year

Fees

Home students: £9,790
per year

International students: £17,500
per year

Location

Holborn, Fitzrovia, Southall,
Wembley or Kingsbury

Study mode

Full-time

► Find out more

For up-to-date information about this course, including delivery modes, please visit our website.



Master of Business Administration (MBA)

Course overview

Our Master of Business Administration (MBA) programme develops strategic thinking, critical knowledge of organisations and leadership practices. It enhances analytical and creative approaches to business issues, preparing professionals for career advancement and improving business management practices in today's global economy.

Modules

This list is not exhaustive. Please see the course webpage for full details.

- Leadership and Management
- Marketing and Operations
- Financial Management and Decision Making
- Strategy
- Professional Project
- Academic Skills and Professional Practice

Why study this course?

- ✓ This qualification has a global appeal and can dramatically improve your employability.
- ✓ Gain necessary business skills and knowledge needed for roles in various industries.
- ✓ Create opportunities for promotion or a career change.

Career progression

Our Master of Business Administration qualification opens global career opportunities across private, public and voluntary sectors. These include finance, technology, blue-chip companies, SMEs and sectors like accountancy, PR, financial management, media, advertising, banking, logistics, project management and more.



Course details

Awarding body

University of Greater Manchester

Duration

12-15 months

Fees

Home students: £9,720

per year

International students: £17,500

per year

Location

Holborn, Fitzrovia, Southall,
Wembley or Kingsbury

Study mode

Full-time

► Find out more

For up-to-date information about this course, including delivery modes, please visit our website.



MSc International Management

Course overview

Our MSc International Management programme prepares aspiring managers for global careers in both the public and private sector. It covers global management theories, cultural contexts and topics like corporate strategy, HR, sustainability and finance, enhancing analytical and decision-making skills for diverse roles.

Modules

This list is not exhaustive. Please see the course webpage for full details.

- International Marketing Management
- Information Systems for Business Performance
- HR in a Global Context
- Research Methods
- Dissertation
- Strategy
- Innovation and Entrepreneurship
- Academic Skills and Professional Practice
- Financial Management and Decision Making

Why study this course?

- ✓ Learn how to adapt to the complex challenges that shape today's globalised marketplace.
- ✓ Get empowered with essential business skills and knowledge.
- ✓ Gain a globally recognised qualification and make your mark in your chosen field.

Career progression

This master's degree prepares graduates for global management careers in various sectors, including private, public and voluntary. Graduates can explore roles in marketing, HR, finance, information systems, strategic management, consultancy, international banking and commodities markets.



Course details

Awarding body

University of Greater Manchester

Duration

12-15 months

Fees

Home students: £8,496
per year

International students: £17,500
per year

Location

Holborn, Fitzrovia, Southall,
Wembley or Kingsbury

Study mode

Full-time

► Find out more

For up-to-date information about this course, including delivery modes, please visit our website.





LAW

Welcome from the Dean



Samira Hussain
Dean of Law

Welcome to the School of Law (SoL) at RCL.

Our foundation year, undergraduate and postgraduate Law courses are designed to provide a robust understanding of UK law, spark engaging debates and inspire creative thinking with a focus on social justice.

As a Law student at RCL, you will become immersed in areas such as criminal law, human rights and civil litigation, examining legal frameworks while gaining hands-on experience through case studies and mock trials.

We equip our students with key analytical and transferable skills that are highly valued by employers, enhancing employability and professional worth in the workplace.

Undergraduate students are encouraged to develop an in-depth knowledge of their subject, supported every step of the way to achieve their goals and ambitions. Postgraduate students have the opportunity to specialise in areas such as international law, human rights or corporate law, furthering their expertise while boosting career prospects in academia, legal practice and policy-making.

Our graduates are prepared to explore a wide range of career paths, from government legal policy and the civil service to forensic accounting, business leadership and corporate law.

We invite you to explore our Law courses and discover how you can shape the future of this dynamic field.

Foundation year

LLB (Hons) Law
with Foundation Year

Undergraduate

LLB (Hons) Law

Postgraduate

LLM International Business Law





LLB (Hons) Law with Foundation Year

Course overview

Our LLB (Hons) Law with Foundation Year programme will provide you with the professional competencies of functioning legal knowledge and applied skills as required for the Solicitors Qualifying Examination to become a solicitor in England and Wales. It also satisfies the academic stage of training to become a barrister and allows you to proceed to the vocational state of training.

Modules

This list is not exhaustive. Please see the course webpage for full details.

- Academic and Research Skills
- Law in Context
- Mooting and Interviewing
- Core Legal Principles

Why study this course?

- ✓ Develop the professional competencies of functioning legal knowledge and applied skills as required for the Solicitors Qualifying Examination.
- ✓ Learn the knowledge and transferable skills needed to stand out to future employers.
- ✓ Online learning provides additional flexibility.

Career progression

Graduates can pursue various careers, including becoming a barrister or advocate, working in-house in legal teams, or roles such as civil service administrator, consumer rights advisor, legal executive, customs officer, probation officer, charity officer, detective and more.



Course details

Awarding body

University of Greater Manchester

Duration

Four years

Fees

Home students: £9,790

(First year fee, tuition fees for the remaining three years of study will be higher)

Location

Holborn, Fitzrovia, Southall, Wembley or Kingsbury

Study mode

Full-time

► Find out more

For up-to-date information about this course, including delivery modes, please visit our website.



LLB (Hons) Law

Course overview

Delivered by a range of expert tutors and academics, our LLB (Hons) Law programme will give you in-demand analytical and transferable skills that will enhance your employability and value in the workplace. This course offers many flexible study options, meaning you can choose which style of learning suits your lifestyle.

Modules

This list is not exhaustive. Please see the course webpage for full details.

- English Legal System and Foundation Legal Skills
- Criminal Law
- Public Law
- Equity and Trusts
- Contract Law
- Professionals in Practice

Why study this course?

- ✓ Ideal for students who wish to enter a career in the legal profession.
- ✓ Learn the knowledge and transferable skills needed to stand out to future employers.
- ✓ If you have a passion for law, and want to challenge injustice, this is the degree for you.
- ✓ Graduates can explore different job roles within the field of law.
- ✓ Online learning provides additional flexibility.

Career progression

Our LLB Law degree is ideal for students interested in becoming a solicitor, barrister or in-house lawyer. It also prepares students for diverse careers in the civil service, criminal justice, social services, probation, the charitable sector and business.



Course details

Awarding body
University of Greater Manchester

Duration
Three years

Fees
Home students: £9,790
per year

Location
Holborn, Fitzrovia, Southall,
Wembley or Kingsbury

Study mode
Full-time

► Find out more

For up-to-date information about this course, including delivery modes, please visit our website.



LLM International Business Law

Course overview

Whether your first degree is in law or business, LLM International Business Law programme provides specialist legal knowledge for advising or managing businesses globally. Learn how to think critically, construct arguments and process large amounts of data.

Modules

This list is not exhaustive. Please see the course webpage for full details.

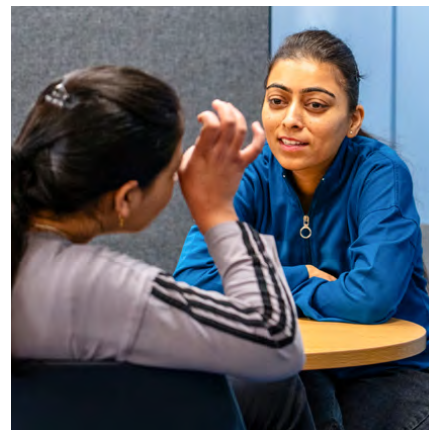
- Fundamental Academic Legal Skills and the English Legal System
- Corporate Governance
- International Business Law
- International Human Rights Law
- Individual Employment Law
- Public International Law
- Independent Legal Research Project
- Financial and Economic Crime
- Legal Tech/Fin Tech
- International Dispute Resolution
- Islamic Insurance (Takaful)
- Islamic Business Transaction Law
- International Marketing Management
- Corporate and Social Responsibility
- Corporate Reporting
- Strategic Management and Leadership
- Dissertation
- Research Skills and Methods in Law

Why study this course?

- ✓ Develop the analytical and critical skills essential for formulating legal arguments.
- ✓ Learn the knowledge and transferable skills needed to stand out to future employers.
- ✓ Online learning provides additional flexibility.

Career progression

Graduates can achieve career progression in law or business, such as working in-house in various professions, government legal policy roles, civil service, forensic accounting, local government, business management and corporate roles.



Course details

Awarding body

University of Greater Manchester

Duration

One year

Fees

Home students: £8,496
per year

International students: £17,500
per year

Location

Holborn, Fitzrovia, Southall,
Wembley or Kingsbury

Study mode

Full-time

► Find out more

For up-to-date information about this course, including delivery modes, please visit our website.





ENGINEERING AND COMPUTING

Welcome from the Dean



Professor Faisal Mustafa
Dean of Engineering and Computing
PhD

Hello and welcome to the School of Engineering and Computing (SoEC) at RCL.

We are committed to developing the next generation of high-achieving, ambitious and confident professionals who will go on to shape business and society.

Studying our Engineering and Computing programmes will equip you with knowledge and skills that will enable you to extend your development capabilities and give you valuable experience of real-life scenarios. It is an excellent way for prospective employers to assess your skills for your first job or for career development.

As a student, you will be at the forefront of everything we do. We aim to make your learning experience stimulating and challenging, taught by staff who are passionate about their subjects. We will:

- Provide a high-quality educational experience that is in line with good academic practice and protect your study interests.

- Ensure that your educational journey is supported by state-of-the-art Engineering and Computing labs and workshop facilities.
- Give timely and constructive feedback for formative and summative assessments, where appropriate, to enhance your learning and achievement.
- Provide opportunities for you to give feedback about the quality of your programme and constituent modules/units of study, facilities and services that you receive, and respond to your feedback in a clear and transparent manner, acting upon it wherever practically possible.

Finally, on behalf of all my colleagues at the SoEC and RCL as a whole, I would like to thank you for your interest in our programmes and hope to see you at the College soon.

Higher National Certificates

HNC in Engineering

HNC in Digital Technologies

Higher National Diplomas

HND in Engineering

HND in Digital Technologies

Foundation Year

BSc (Hons) Computer Science with Foundation Year

BEng (Hons) Software Engineering with Foundation Year

BEng (Hons) Electrical and Electronic Engineering with Foundation Year

BEng (Hons) Mechanical Engineering with Foundation Year

Undergraduate

BSc (Hons) Computer Science

BEng (Hons) Electrical and Electronic Engineering

BEng (Hons) Software Engineering

BSc (Hons) Computing

Top-up

BSc (Hons) Computer Science (Top-up)

BEng (Hons) Software Engineering (Top-up)

BEng (Hons) Electrical and Electronic Engineering (Top-up)

Postgraduate

MSc Software Engineering



HNC in Engineering

Course overview

Our HNC in Engineering programme blends study with practical learning. It is ideal for anyone looking to take their first steps into higher education, with a hands-on approach, before either going on to employment or a degree.

Modules

This list is not exhaustive. Please see the course webpage for full details.

Electrical / Electronic Engineering modules

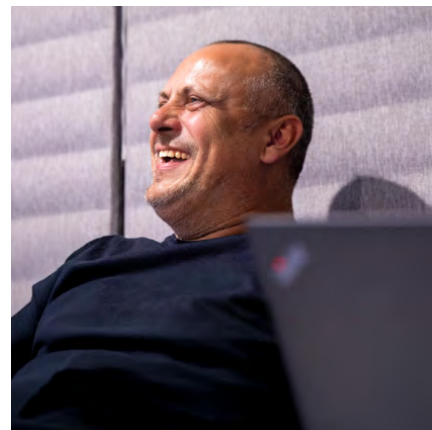
- Engineering Design
- Engineering Maths
- Managing a Professional Engineering Project (Pearson-set unit)
- Mechatronics
- Mechanical Principles
- Production Engineering for Manufacture
- Quality and Process Improvement
- Digital Principles

Why study this course?

- ✓ Designed to help set you apart from the crowd.
- ✓ Developed to suit both aspiring engineers and those currently working in the sector.
- ✓ No matter what sort of engineering interests you, this course will help you achieve your goals.
- ✓ Gain a recognised qualification that enhances your employability and academic progression.

Career progression

This HNC prepares students for a wide range of employment opportunities across private and public sector organisations. Job roles for successful candidates include electronic engineer, mechanical engineer, automotive engineer and maintenance engineer. Further study and experience in engineering can also prepare you for roles such as senior quality engineer and senior geotechnical engineer.



Course details

Awarding body
Pearson

Duration
One year

Fees
Home students: £9,790
per year

Location
Holborn

Study mode
Full-time

► Find out more

For up-to-date information about this course, including delivery modes, please visit our website.



HNC in Digital Technologies

Course overview

Our HNC in Digital Technologies programme blends theoretical learning with practical application, preparing students for advanced roles in the tech industry or further academic study. Graduates will gain competencies in digital transformation, programming, network management and data visualisation, enhancing their employability and career prospects in various technology sectors.

Modules

This list is not exhaustive. Please see the course webpage for full details.

- Professional Practice in the Digital Economy
- Innovation and Digital Transformation
- Cyber Security
- Programming
- Big Data & Visualisation
- Cloud Fundamentals
- Software Development Lifecycles

Why study this course?

- ✓ Designed to help set you apart from the crowd.
- ✓ Key areas include cyber security, software development, data analytics and cloud networking.
- ✓ No matter what kind of digital technology interests you, this course will help you achieve your goals.
- ✓ Benefit from academic advice, personal tutoring and career guidance.
- ✓ Gain a recognised qualification that enhances your employability and academic progression.

Career progression

This HNC prepares students for a wide range of employment opportunities across private and public sector organisations. Potential job roles include business analyst, cyber security technologist, data analyst, digital community manager, junior animator, network engineer, software developer, and software tester.



Course details

Awarding body

Pearson

Duration

One year

Fees

Home students: £9,790

per year

Location

Kingsbury, Wembley, Fitzrovia and Holborn

Study mode

Full-time

► Find out more

For up-to-date information about this course, including delivery modes, please visit our website.



HND in Engineering

Course overview

Build the knowledge and practical skills needed for a successful engineering career with our two-year HND in Engineering. Develop technical expertise, problem-solving and professional confidence through hands-on learning, preparing you for employment in the engineering sector or progression to the final year of a related degree.

Modules

This list is not exhaustive. Please see the course webpage for full details.

Electrical / Electronic Engineering modules

- Engineering Design (Level 4)
- Engineering Maths (Level 4)
- Managing a Professional Engineering Project (Pearson Set) (Level 4)
- Mechatronics (Level 4)
- Mechanical Principles (Level 4)
- Production Engineering for Manufacture (Level 4)
- Quality and Process Improvement (Level 4)
- Digital Principles (Level 4)
- Professional Engineering Management (Pearson Set) (Level 5)
- Further Mathematics (Level 5)
- Commercial Programming Software (Level 5)
- Distributed Control Systems Unit (Level 5)
- Further Electrical Machines and Drives (Level 5)
- Embedded Systems (Level 5)
- Analogue Electronic Systems (Level 5)
- Further Control Systems Engineering (Level 5)

Why study this course?

- ✓ Gain the specialist knowledge and practical skills you need to start your engineering career.
- ✓ Progress confidently into employment or further higher education with a recognised qualification.
- ✓ Learn through an industry-aligned curriculum shaped by current professional standards.
- ✓ Benefit from small class sizes and personalised support from experienced academics.

Career progression

This HND prepares students for a wide range of employment opportunities across private and public sector organisations. Job roles for successful candidates include electronic engineer, mechanical engineer, automotive engineer and maintenance engineer. Further study and experience in engineering can also prepare you for roles such as senior quality engineer and senior geotechnical engineer.



Course details

Awarding body
Pearson

Duration
Two years

Fees
Home students: £9,790
per year

Location
Holborn

Study mode
Full-time

► Find out more

For up-to-date information about this course, including delivery modes, please visit our website.



HND in Digital Technologies

Course overview

Our HND in Digital Technologies programme will help you develop specialist digital technology skills. Build technical knowledge, problem-solving and professional expertise for careers in the digital sector or progression to the final year of a degree. Tailor your studies to your chosen pathway and gain practical, industry-relevant experience.

Modules

This list is not exhaustive. Please see the course webpage for full details.

- Professional Practice in the Digital Economy
- Innovation & Digital Transformation
- Business Intelligence
- Internet of Things
- Emerging Technologies

Why study this course?

- ✓ Build in-demand skills by developing practical, interpersonal and critical thinking abilities.
- ✓ Benefit from industry-aligned learning designed to meet current professional standards.
- ✓ Gain real-world experience through live projects and client-focused briefs.
- ✓ Progress with confidence into employment or further higher education with a recognised qualification.

Career progression

Our HND in Digital Technologies programme is widely recognised by universities and can provide entry onto the final year of a related bachelor's degree. It also prepares you to move directly into employment within the digital technology sector.



Course details

Awarding body
Pearson

Duration
Two years

Fees
Home students: £9,790
per year

Location
Fitzrovia, Holborn, Kingsbury,
Wembley, Southall

Study mode
Full-time

► Find out more

For up-to-date information about this course, including delivery modes, please visit our website.



BSc (Hons) Computer Science with Foundation Year

Course overview

Our BSc (Hons) Computer Science with Foundation Year programme will help you develop practical, technical and problem-solving skills. Gain a strong understanding of software development, algorithms and innovation while learning to adapt to emerging technologies, preparing you for employment or further study in the computing industry.

Modules

This list is not exhaustive. Please see the course webpage for full details.

- Fundamentals of Programming
- Logical Analysis and Problem Solving
- Computer Systems
- Foundation Project
- Maths for Computing
- Computer Science Fundamentals
- Computing Infrastructure
- Databases
- Object Oriented Programming
- Data Structures and Algorithms
- Computer Systems Architecture
- Research and Professional Issues
- Undergraduate Project

Why study this course?

- ✓ A Foundation Year gives you a firm grounding in academic and technical skills.
- ✓ Study a comprehensive range of relevant topics that align with real-world applications and career demands.
- ✓ Curriculum developed in collaboration with industry partners to reflect current trends, technologies and employer expectations.
- ✓ Benefit from small class sizes and receive personalised attention from our dedicated academic team.
- ✓ A strong emphasis on practical learning, with hands-on laboratory work playing a key role in developing essential skills.

Career progression

Upon completion of this programme, graduates can explore careers in wide range of areas, including:

Network design, Programming, Web development, Software application, Interactive multimedia roles, IT support Consultancy and operations, E-commerce, Business analysis.

Graduates can use the qualification as a stepping-stone into a range of other careers. Some of these roles may require relevant experience and/or postgraduate study. Some possibilities include:

Teaching, Research and development, Network engineering, Cyber security, Information systems management, Games development.



Course details

Awarding body

University of Greater Manchester

Duration

Four years

Fees

Home students: £9,790
per year

Location

Holborn, Fitzrovia, Southall,
Wembley or Kingsbury

Study mode

Full-time

► Find out more

For up-to-date information about this course, including delivery modes, please visit our website.



BEng (Hons) Software Engineering with Foundation Year

Course overview

Our BEng (Hons) in Software Engineering with Foundation Year programme tasks you with building and maintaining software systems and other computer-based solutions. By examining all elements of the process, this degree offers you a focused yet fully rounded education. Explore the underlying principles of software engineering while gaining knowledge and practical experience of the latest technologies.

Modules

This list is not exhaustive. Please see the course webpage for full details.

- Fundamentals of Programming
- Logical Analysis and Problem-Solving
- Computer Systems
- Foundation Project
- Math for Computing
- Computer Science Fundamentals
- Computing Infrastructure
- Databases
- Object Oriented Programming
- Advanced Programming
- Data Structures and Algorithms
- Applied Software Engineering
- Systems Analysis and Design
- Research and Professional Issues
- Undergraduate Project
- Agile Programming

Why study this course?

- ✓ Develop the technical knowledge needed to successfully progress within the software systems field.
- ✓ Gain experience in communication and presentation, problem-solving and time management.
- ✓ Learn in-demand skills that prepare you for a career in software engineering.

Career progression

Software engineering graduates often start out as programmers and work their way up to positions of greater responsibility. Relevant jobs include games development, systems development, web design, web development, search engine optimisation, information systems management and business analysis.



Course details

Awarding body

University of Greater Manchester

Duration

Four years

Fees

Home students: £9,790 per year

Location

Holborn, Fitzrovia, Southall, Wembley or Kingsbury

Study mode

Full-time

► Find out more

For up-to-date information about this course, including delivery modes, please visit our website.



BEng (Hons) Electrical and Electronic Engineering with Foundation Year

Course overview

Our four-year BEng (Hons) in Electrical and Electronic Engineering with Foundation Year programme covers essential engineering practices and theories. The first year provides a grounding in engineering, electronics and mathematics. Delivered in partnership with the University of Greater Manchester, the course prepares you for a global engineering career with optional modules in renewable energies and advanced embedded systems.

Modules

This list is not exhaustive. Please see the course webpage for full details.

- Foundation Principles 0
- Foundation Principles 1
- Foundation Principles 2
- Engineering Study Skills
- Engineering Technology
- Engineering Environment
- Introductory Engineering Mathematics
- Introductory Electrical Principles
- Introductory Analogue Electronics
- Introductory Embedded Systems
- Engineering Modelling and Analysis
- Instrumentation and Control
- Intermediate Digital Electronics and Communications
- Intermediate Electrical Principles and Enabling Power Electronics
- Intermediate Embedded Systems
- Analogue Signal Processing and Communications
- Management and Enterprise in Engineering
- Major Project
- Electrical Machines and Power Electronic Drives
- Engineering Electromagnetism

Why study this course?

- ✓ Develop the capabilities to pursue a successful career in engineering.
- ✓ Prepare for the workplace with professional management and leadership skills.
- ✓ Apply engineering principles to critically analyse key engineering processes.
- ✓ Graduates can progress into relevant fields, such as advanced manufacturing, product design, biomedical engineering or artificial intelligence.

Career progression

Demand for creative, skilled engineers – both nationally and internationally – is growing rapidly. In addition to technical knowledge, students will develop highly transferrable skills, such as IT, finance and management. Graduates can also pursue further study in a specialist field of research, such as an MSc or PhD in internet engineering, nanotechnology, wireless and optical communications, and telecommunications.



Course details

Awarding body
University of Greater Manchester

Duration
Four years

Fees
Home students: £9,790
per year

Location
Holborn

Study mode
Full-time

► Find out more

For up-to-date information about this course, including delivery modes, please visit our website.



BEng (Hons) Mechanical Engineering with Foundation Year

Course overview

Our BEng (Hons) Mechanical Engineering with Foundation Year programme equips you with the skills and knowledge to thrive in the diverse field of mechanical engineering. The course covers mathematical and statistical methods for solving complex problems, workload management and communication skills, providing a strong foundation in engineering principles.

Modules

This list is not exhaustive. Please see the course webpage for full details.

- Foundation Principles 1
- Foundation Principles 2
- Engineering Study Skills
- Engineering Technology
- Engineering Environment
- Engineering Principles 1
- Engineering Principles 2
- Projects and Systems
- Graphical Communications and Computer Modelling
- Engineering Applications
- Mechanics of Materials and Machines
- Thermofluids and Control Systems
- Engineering Modelling and Analysis
- Engineering in Business and Society
- Major Project (AME6011)
- Advanced Materials and Structures
- Management and Enterprise in Engineering
- Advanced Thermofluids and Control
- Finite Element and Difference Solutions

Why study this course?

- ✓ Prepare for a rewarding career in the sector, where talent is in high demand.
- ✓ Develop cognitive, intellectual and problem-solving skills via key principles of mechanical engineering.
- ✓ Graduates can pursue careers in many relevant sectors, including advanced manufacturing, product design, biomedical engineering and artificial intelligence.

Career progression

This degree is recognised nationally and internationally. Graduates can explore a range of careers in engineering and relevant sectors, including aerospace, automotive, chemical, construction, medicine, sport and consumer goods. The demand for skilled and qualified mechanical engineers is increasing, which is fostered by a transforming economic landscape, driven by the need for advanced engineering solutions.



Course details

Awarding body

University of Greater Manchester

Duration

Four years

Fees

Home students: £9,790 per year

Location

Holborn

Study mode

Full-time

► Find out more

For up-to-date information about this course, including delivery modes, please visit our website.



BSc (Hons) Computer Science

Course overview

Our BSc (Hons) Computer Science programme will help you develop the practical, technical and problem-solving skills needed for success in the computing industry. Gain expertise in software development, algorithms and innovation while learning to adapt to emerging technologies, preparing you for employment or further study.

Modules

This list is not exhaustive. Please see the course webpage for full details.

- Maths for Computing
- Computer Science Fundamentals
- Computing Infrastructure
- Databases
- Object Oriented Programming
- Data Structures and Algorithms
- Computer Systems Architecture
- Systems Analysis and Design
- Research and Professional Issues
- Undergraduate Project

Why study this course?

- ✓ Study a comprehensive range of relevant topics that align with real-world applications and career demands.
- ✓ A strong emphasis on practical learning, with hands-on laboratory work playing a key role in developing essential skills.
- ✓ Curriculum developed in collaboration with industry partners to reflect current trends, technologies and employer expectations.
- ✓ Benefit from small class sizes and receive personalised attention from our dedicated academic team.

Career progression

Upon completion of this programme, graduates can explore careers in wide range of areas, including: network design, programming, web development, software application, interactive multimedia roles, IT support, consultancy and operations, e-commerce, and business analysis.



Course details

Awarding body
University of Greater Manchester

Duration
Three years

Fees
Home students: £9,790 per year
International students: £17,500 per year

Location
Holborn, Fitzrovia, Southall, Wembley or Kingsbury

Study mode
Full-time

► Find out more

For up-to-date information about this course, including delivery modes, please visit our website.



BEng (Hons) Electrical and Electronic Engineering

Course overview

Our BEng (Hons) Electrical and Electronic Engineering programme, validated by the University of Greater Manchester, equips you with essential skills. It covers circuit design, signal processing and control systems, preparing you for professional roles in the industry. The course supports lifelong learning and prepares engineers for global career opportunities.

Modules

This list is not exhaustive. Please see the course webpage for full details.

- Engineering Environment
- Introductory Engineering Mathematics
- Introductory Electrical Principles
- Introductory Analogue Electronics
- Introductory Embedded Systems
- Engineering Modelling and Analysis
- Instrumentation and Control
- Intermediate Digital Electronics and Communications
- Intermediate Electrical Principles and Enabling Power Electronics
- Intermediate Embedded Systems
- Analogue Signal Processing and Communications
- Management and Enterprise in Engineering
- Major Project
- Electrical Machines and Power Electronic Drives
- Engineering Electromagnetism

Why study this course?

- ✓ Develop real-world engineering knowledge and skills through a combination of theory and practical applications.
- ✓ Learn about cutting-edge and emerging technologies such as Smart Grids that are transforming global electricity delivery systems.
- ✓ Graduates will demonstrate systematic knowledge, such as applying engineering principles to critically analyse key processes.
- ✓ Graduates can progress into a career in many fields including advanced manufacturing, product design, biomedical engineering or artificial intelligence, among many others. You may also choose to study a master's degree.
- ✓ Gain the confidence to explore a career in various engineering disciplines.

Career progression

Graduates can work in local authorities, manufacturing, power and water companies, renewable energy firms or building services. Alternatively, you can pursue further study with an MSc or PhD in internet engineering, nanotechnology, wireless and optical communications or telecommunications.



Course details

Awarding body

University of Greater Manchester

Duration

Full-time: Three years

Part-time: Four to five years

Fees

Home students: £9,790 per year

Part-time: £6,526 per year

Location

Holborn

Study mode

Full-time, Part-time

► Find out more

For up-to-date information about this course, including delivery modes, please visit our website.



BEng (Hons) Software Engineering

Course overview

Our BEng (Hons) Software Engineering programme enables you to forge your own path into specialisms and potential career options within various sectors. The course provides a comprehensive education in software development, from foundational principles to advanced techniques in programming, system design and software project management.

Modules

This list is not exhaustive. Please see the course webpage for full details.

- Maths for Computing
- Computer Science Fundamentals
- Computing Infrastructure
- Databases
- Object Oriented Programming
- Advanced Programming
- Data Structures and Algorithms
- Applied Software Engineering
- Systems Analysis and Design
- Research and Professional Issues
- Undergraduate Project
- Agile Programming

Why study this course?

- ✓ Explore the underlying principles of software engineering, while gaining knowledge and practical experience of the latest technologies.
- ✓ Learn about the technical and human aspects involved in software systems and design, systems analysis, programming, database specification and design, and system security.
- ✓ Students will also gain experience in communication and presentation, problem-solving and time management.
- ✓ Develop industry-relevant skills that prepare you for a career in software engineering.

Career progression

Software engineers work across the software development lifecycle, including requirements, coding, testing, deployment and maintenance. Graduates gain technical and transferable skills like advanced IT, analytical, communication, creativity and project management. Demand for qualified software engineers is rising due to economic transformation and technology needs.



Course details

Awarding body

University of Greater Manchester

Duration

Full-time: Three years

Part-time: Six years

Fees

Home students: £9,790 per year

Part-time blended: £4,895 per year

Location

Holborn, Fitzrovia, Southall, Wembley or Kingsbury

Study mode

Full-time, Part-time

► Find out more

For up-to-date information about this course, including delivery modes, please visit our website.



BSc (Hons) Computing

Course overview

Our three-year BSc (Hons) Computing course is a flexible and far-reaching undergraduate course designed to support you with focused attention, industry insights and excellent IT resources. The programme combines theoretical study with practical projects, equipping you with the skills you require to excel in the ever-evolving world of computing.

Modules

This list is not exhaustive. Please see the course webpage for full details.

- Maths for Computing
- Computer Science Fundamentals
- Databases
- Object Oriented Programming
- Systems Analysis and Design
- Web Design and Programming
- Cloud Technologies
- Research Professional Issues
- Undergraduate Project
- Emerging Technologies

Why study this course?

- ✓ Gain a broad, industry-informed education that brings together key elements from a range of subject areas, helping you develop versatile knowledge and skills.
- ✓ Tailor your studies as you progress by exploring the topics that match your interests, strengths and future career ambitions.
- ✓ Benefit from small class sizes that support personalised learning, with dedicated lecturers who bring valuable industry experience and real-world insight to the classroom.

Career progression

Graduates can explore careers across a wide range of industries. Popular areas include network design, programming, web development, software application, interactive multi-media roles, IT support, consultancy and operations, e-commerce and business analysis.



Course details

Awarding body

University of Greater Manchester

Duration

Three years

Fees

Home students: £9,790
per year

Location

Holborn, Fitzrovia, Wembley,
Southall, Kingsbury

Study mode

Full-time

► Find out more

For up-to-date information about this course, including delivery modes, please visit our website.



BSc (Hons) Computer Science (Top-up)

Course overview

Our BSc (Hons) Computer Science (Top-up) programme will help you develop advanced computing, software development and problem-solving skills while exploring emerging technologies, professional practice and industry-relevant techniques, preparing you for employment or further study in the computing sector.

Modules

This list is not exhaustive. Please see the course webpage for full details.

- Research and Professional Issues
- Undergraduate Project
- Applied Machine Learning
- Software Quality Management
- Emerging Technologies
- Natural Language Processing
- Information Security Management
- Operations Management

Why study this course?

- ✓ Study a comprehensive range of relevant topics that align with real-world applications and career demands.
- ✓ A strong emphasis on practical learning, with hands-on laboratory work playing a key role in developing essential skills.
- ✓ Curriculum developed in collaboration with industry partners to reflect current trends, technologies and employer expectations.
- ✓ Upon completing this top-up programme, you can progress from a suitable prior qualification to a full honour's degree.
- ✓ Benefit from small class sizes and receive personalised attention from our dedicated academic team.

Career progression

Upon completion of this programme, graduates can explore careers in wide range of areas, including: network design, programming, web development, software application, interactive multimedia roles, IT support, consultancy and operations, e-commerce and business analysis.



Course details

Awarding body

University of Greater Manchester

Duration

One year

Fees

Home students: £9,790
per year

Location

Holborn, Fitzrovia, Southall,
Wembley or Kingsbury

Study mode

Full-time

► Find out more

For up-to-date information about this course, including delivery modes, please visit our website.



BEng (Hons) Software Engineering (Top-up)

Course overview

The BEng (Hons) Software Engineering (Top-up) programme is designed for those who have completed a relevant foundation degree or HNC and want to advance their career in software engineering. It offers a blend of academic and practical training, focusing on key areas like software lifecycle, design, systems analysis, programming, databases, and security. You'll also develop essential soft skills such as teamwork, communication, and time management, supported by experienced staff with industry expertise.

Modules

This list is not exhaustive. Please see the course webpage for full details.

- Research and Professional Issues
- Undergraduate Project
- Agile Programming
- Applied Machine Learning
- Software Quality Management
- Computer Graphics
- Operations Management

Why study this course?

- ✓ This top-up course will complement related foundation degree or HNC qualifications, equipping you with the skills you need for a rewarding career.
- ✓ The course has been designed in collaboration with industrial partners, exploring highly relevant topics and utilising realistic scenarios.
- ✓ Prepare for international career opportunities with modules that cover culture, socialisation, localisation, and international computer and communications standards.

Career progression

Graduates in software engineering typically begin their careers as programmers and can progress to roles like software architects or project managers. Career paths directly linked to the degree include games and systems development, web design and development, SEO, information systems management, and business analysis. Opportunities also span diverse sectors such as business, healthcare, gaming, publishing, IT, education, aerospace, and cyber security.



Course details

Awarding body

University of Greater Manchester

Duration

One year

Fees

Home students: £9,790
per year

Location

Holborn, Fitzrovia, Southall,
Wembley or Kingsbury

Study mode

Full-time

► Find out more

For up-to-date information about this course, including delivery modes, please visit our website.



BEng (Hons) Electrical and Electronic Engineering (Top-up)

Course overview

The BEng (Hons) Electrical and Electronic Engineering (Top-up) programme explores an array of exciting topics, including the key principles of instrumentation and control, engineering electromagnetism, and renewable energies. Modern and career-focused, this degree programme offers you the grounding needed to excel within engineering.

Modules

This list is not exhaustive. Please see the course webpage for full details.

- Major Project
- Management and Enterprise in Engineering
- Electrical Machines and Power Electronic Drives
- Engineering Electromagnetism
- Digital Signal Processing
- Integrated Circuit Design
- Power Systems and Smart Grids
- Renewable Energies
- Advanced Embedded Systems

Why study this course?

- ✓ Top-up your existing qualification to a full honours degree in just one year.
- ✓ Develop cognitive, intellectual, and problem-solving skills via key principles of electrical and electronic engineering.
- ✓ The programme integrates transferable skills such as leadership, team management and professional communication to enhance employability.

Career progression

This programme allows you to top-up your existing qualification to a full honours degree in just one year. Graduates will be prepared for a range of potential career routes. These include civil engineering, software engineering, environmental engineering and electrical engineering.



Course details

Awarding body
University of Greater Manchester

Duration
One year

Fees
Home students: £9,790
per year

Location
Holborn

Study mode
Full-time

► Find out more

For up-to-date information about this course, including delivery modes, please visit our website.



MSc Software Engineering

Course overview

Our MSc Software Engineering programme offers advanced understanding of software methodologies, development and resource analysis. Graduates can pursue careers in games, systems, web development, SEO, information systems management, web design and business analysis. RCL provides dedicated student support throughout your studies.

Modules

This list is not exhaustive. Please see the course webpage for full details.

- Professional Practice
- Research Methods
- Contemporary Software Engineering Practices
- Advanced Software Development
- Dev Ops
- Data Analysis and Visualisation
- InfoSec
- Project

Why study this course?

- ✓ Gain cognitive, intellectual and transferable skills that are valued in the job market.
- ✓ Our excellent academic teams deliver engaging lessons to our students.
- ✓ Small class sizes ensure one-to-one advice and help when needed.
- ✓ Graduates can explore careers in various engineering disciplines, such as web development, quality assurance and much more.
- ✓ Related fields including advanced manufacturing, product design, biomedical engineering or artificial intelligence.

Career progression

Our MSc Software Engineering degree will stimulate your levels of creative thinking and enhance your problem-solving and decision-making techniques, allowing you to impress employers and make your mark within the industry. This course also paves the way for PhD research studies in software engineering and computing-related subjects.



Course details

Awarding body
University of Greater Manchester

Duration
One year

Fees
Home students: £8,496 per year
International students: £17,500 per year

Location
Holborn, Fitzrovia, Southall, Wembley or Kingsbury

Study mode
Full-time

► Find out more

For up-to-date information about this course, including delivery modes, please visit our website.



SCHOOL OF HEALTH AND SPORTS SCIENCE

Welcome from the Dean



Dr Morris Anglin
Dean of Health and Sports Science
PhD, MSPH, FRSPH, PFHEA

Welcome to the School of Health and Sports Science (SoHSS) at RCL

The School is dedicated to advancing knowledge and understanding of health, wellbeing, human behaviour, physical activity and social care. Through an interdisciplinary approach, we bring together the study of health and social care, psychology, sport and exercise science, and nutrition to address the complex challenges facing individuals and communities today.

Our programmes combine academic study with practical application, enabling students to develop the knowledge, skills and professional attributes required for success in their chosen fields.

The School draws upon a range of disciplines, including:

- Health and Social Care
- Psychology
- Sociology

- Physiology
- Nutrition
- Anatomy
- Biomechanics
- Research Methods
- Sport and Exercise Science

We offer a range of undergraduate and postgraduate programmes designed to support students at different stages of their academic and professional journey. Our students benefit from experienced academic staff, a supportive learning environment and opportunities to engage with employers, industry professionals and contemporary research.

As technology continues to transform society, we are committed to preparing students for the future world of work. This includes developing digital capabilities and an understanding of how emerging technologies, including artificial intelligence (AI), are shaping health, social care, psychology, sport, research and professional practice. We encourage students to engage critically and ethically with these developments while building the skills needed to thrive in an increasingly technology-enabled world.

Graduates from the School pursue careers across a wide range of sectors, including healthcare, social care, sport and exercise, health promotion, education, research, community services and related professions.

Whether you are beginning your studies or continuing your professional development, we are committed to supporting you in achieving your ambitions and reaching your full potential.

Foundation Year

BSc (Hons) Health and Social Care with Foundation Year

Undergraduate

BSc (Hons) Health and Social Care

Top-up

BSc (Hons) Health and Social Care (Top-up)

Postgraduate

MSc Social Care, Health and Wellbeing





BSc (Hons) Health and Social Care with Foundation Year

Course overview

Our BSc (Hons) Health and Social Care with Foundation Year programme is designed to help you become a knowledgeable and compassionate professional, ready to address the challenges of today's healthcare environment. Led by a highly experienced and dedicated team, the programme focuses on exploring fundamental principles of care, professional values, ethical practice, promoting physical and mental health, emotional wellbeing and safeguarding diversity and inclusion.

Modules

This list is not exhaustive. Please see the course webpage for full details.

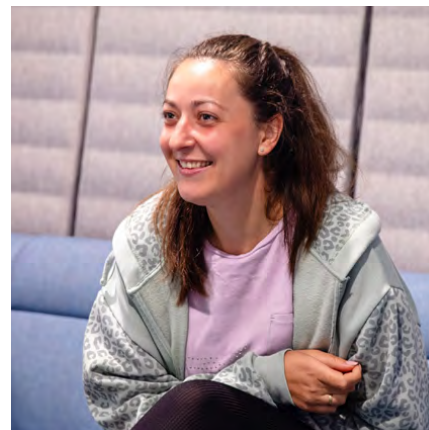
- Reading Modern Society
- The Individual and Society
- Research Methods in Social Science
- The World of Work
- Reading Contemporary Society
- Self-Reflection and Academic Skill Development
- Legal and Ethical Issues
- Introduction to Social Policy
- Principles of Care
- Anatomy and Physiology for Health and Social Care
- Introduction to Research and Evidence-Based Practice
- Enhancing Communication and Academic Skills
- Group Dynamics and Working in Teams
- Work-Based Experience
- Health Promotion – Challenges and Opportunities
- Social Inclusion, Empowerment and Health
- Employability Skills
- Person Centred Health and Social Care
- Research Proposal/Methods
- Compassionate Health and Social Care
- Dissertation/Research Project

Why study this course?

- ✓ This degree will give you a good foundation, allowing you to work in a wide range of statutory, voluntary and independent settings.
- ✓ Graduates with a health and social care background may also be considered for careers in health education and health promotion, welfare, health research, community mental health and care management services.
- ✓ Graduates may seek roles as service managers and coordinators, in advocacy, education and training, or as technicians and support workers helping children and families, older and disabled people, drug and alcohol abusers, and people with mental health problems.

Career progression

There is a growing demand for health and social care workers who can work flexibly to accommodate the complex health and social care needs of individuals, families and communities. This Foundation Year degree will also enable you to develop a range of key transferable employability skills, including written and verbal communication skills, IT skills, the ability to work independently and in a team, research and data analysis skills, and the ability to provide support and guidance.



Course details

Awarding body
University of Greater Manchester

Duration
Four years

Fees
Home students: £9,790
per year

Location
Holborn, Fitzrovia, Southall,
Wembley or Kingsbury

Study mode
Full-time

► Find out more

For up-to-date information about this course, including delivery modes, please visit our website.



BSc (Hons) Health and Social Care

Course overview

Our BSc (Hons) Health and Social Care programme prepares you to make a positive impact on the lives of vulnerable people and work in diverse settings, including local authorities, health promotion and care units. Graduates can pursue careers in health education, welfare, community mental health and various support roles.

Modules

This list is not exhaustive. Please see the course webpage for full details.

- Legal and Ethical Issues
- Introduction to Social Policy
- Principles of Care
- Anatomy and Physiology for Health and Social Care
- Introduction to Research and Evidence-Based Practice
- Enhancing Communication and Academic Skills
- Group Dynamics and Working in Teams
- Work-Based Experience
- Health Promotion – Challenges and Opportunities
- Social Inclusion, Empowerment and Health
- Employability Skills
- Person-Centred Health and Social Care
- Research Proposal/Methods
- Compassionate Health and Social Care
- Dissertation/Research Project

Why study this course?

- ✓ Develop the values, practical skills and knowledge necessary for a successful career in the global health and social care environment.
- ✓ Explore the principles of care, professional values, attitudes and behaviour, ethical practice of care, promoting physical and mental health and emotional wellbeing, safeguarding, and promoting diversity and inclusion.
- ✓ Become a knowledgeable and compassionate care professional.

Career progression

There is a growing demand for health and social care workers who can work flexibly to accommodate the needs of individuals, families and communities. Students will develop a range of transferable skills to boost employability, including written and verbal communication skills, IT skills, the ability to work independently and in a team, research and data analysis skills, and the ability to provide support and guidance.



Course details

Awarding body
University of Greater Manchester

Duration
Three years

Fees
Home students: £9,790
per year

Location
Holborn, Fitzrovia, Southall,
Wembley or Kingsbury

Study mode
Full-time

► Find out more

For up-to-date information about this course, including delivery modes, please visit our website.



BSc (Hons) Health and Social Care (Top-up)

Course overview

Our BSc (Hons) Health and Social Care (Top-up) programme will help you positively impact the lives of vulnerable people. This course covers key topics like safeguarding, elder care and mental health. It builds on previous healthcare studies, preparing you for senior roles or your own healthcare business, offering extensive employment opportunities.

Modules

This list is not exhaustive. Please see the course webpage for full details.

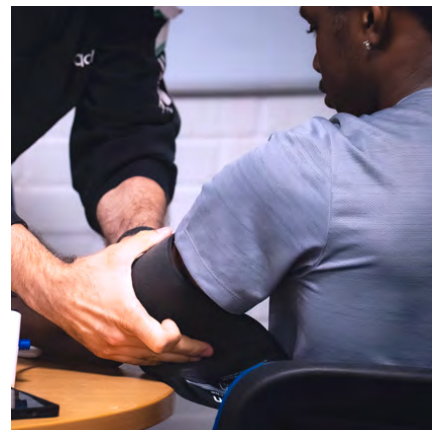
- Research Proposal/Methods
- Compassionate Health and Social Care
- Dissertation/Research Project

Why study this course?

- ✓ This one-year course is particularly aimed at those who wish to develop critical, cognitive, professional and intellectual approaches to healthcare.
- ✓ Suitable for those who already have a broad healthcare-related HNC, foundation degree or Level 5 equivalent.
- ✓ We offer flexible study modes to help you fit your studies around your busy life.

Career progression

Throughout the course, you will develop new skills and enhance your current knowledge. Upon completion, you will be well-positioned for employment in the healthcare sector or further study. Graduates can work in health education, promotion, research, community mental health, care management services, social work and nursing (additional training required).



Course details

Awarding body

University of Greater Manchester

Duration

One year

Fees

Home students: £9,790 per year

International students: £17,500 per year

Location

Holborn, Fitzrovia, Southall, Wembley or Kingsbury

Study mode

Full-time

► Find out more

For up-to-date information about this course, including delivery modes, please visit our website.



MSc Social Care, Health and Wellbeing

Course overview

Our MSc Social Care, Health and Wellbeing programme provides an advanced understanding of the health and social care sector, including equality, diversity and collaboration. You will gain critical awareness of current issues and develop practical skills for your career. We also emphasise lifelong learning skills for personal and professional growth.

Modules

This list is not exhaustive. Please see the course webpage for full details.

- Dissertation
- Postgraduate Preparation for Research Design
- Critical Reading and Writing Skills
- Equality and Diversity for Human Services
- Leadership and Innovation
- Contemporary Issues, Policy and Practice
- Collaborative and Integration in Health and Social Care
- Person-Centered Approaches and Service User Involvement in Health and Social Care

Why study this course?

- ✓ Graduates will be able to demonstrate systematic knowledge and understanding of a range of health and social care-related principles, concepts and values.
- ✓ This degree will allow you to work in a wide range of statutory, voluntary and independent settings – including local authority teams, health promotion projects, refugee and asylum service hospitals, sheltered accommodation, hospices and day centres, and residential care units.
- ✓ Demand for skilled and qualified health and social care workers is increasing.

Career progression

This qualification provides the opportunity to develop your knowledge for an existing role, improve your prospects or make a career change. It can also be a first step towards an academic career. Graduates can explore many different fields – both in the UK and abroad – including multi-agency teams, health promotion projects, refugee and asylum services, hospitals, sheltered accommodation, hospices, day centres and residential care units.



Course details

Awarding body
University of Greater Manchester

Duration
One year

Fees
Home students: £8,496 per year
International students: £17,500 per year

Location
Holborn, Fitzrovia, Southall, Wembley or Kingsbury

Study mode
Full-time

► Find out more

For up-to-date information about this course, including delivery modes, please visit our website.



DEPARTMENT OF PSYCHOLOGY AND NEUROSCIENCE

Welcome from the Head of Department



Professor Joanne Lusher
Head of Department of Psychology and Neuroscience

PhD MSc BSc (Hon's) PGC(TL)HE CSci CPsychol
AFBPsS PFHEA

Hello and welcome to our brand-new Department of Psychology and Neuroscience at RCL.

Psychology it is all around us – in our home, work and everyday life. Everything from how stressed we feel, to when we instinctively check our phone is driven by psychology. Even something as small as scrolling instead of sleeping comes down to psychological cues. Whether we stick to a goal or give up depends on our belief systems, and choosing comfort food can be explained by emotional regulation.

Psychology is a broad field that encompasses multiple disciplines. It focuses on how biological, psychological and social factors work together to influence how we think, feel, behave and act in different contexts.

Psychology integrates scientific principles, research and theory with practical application to develop a comprehensive understanding of human behaviour and mental processes in the social world.

We offer a full-time BSc (Hons) Psychology with Foundation Year programme and a one-year MSc Psychology programme with a positive psychology, mental health and wellbeing focus.

Graduates will be prepared for diverse careers in mental health support, positive wellbeing and a range of other people-focused roles in related professions, enabling them to make a positive impact in their communities and workplaces.

Our programmes are taught by experienced practitioners, field experts and chartered psychologists. We are excited to be expanding our portfolio of courses with a three-year full time BSc (Hons) Psychology and a one-year full-time MSc Conversion degree in Psychology from September 2027, widening access for all students.

Foundation year

BSc (Hons) Psychology with Foundation Year

Postgraduate

MSc Psychology





BSc (Hons) Psychology with Foundation Year

Course overview

Our BSc (Hons) Psychology with Foundation Year programme provides an in-depth understanding of the science and theories in psychology and their application to everyday life. Upon completion of the foundation year, you will be ready to deepen your knowledge through our range of core modules. Plus, choose specialised option modules according to your areas of interest or desired career path.

Modules

This list is not exhaustive. Please see the course webpage for full details.

- Perspectives in Psychology
- Key Studies in Psychology
- Understanding the Person
- Contemporary Issues in Psychology
- Application of Psychology
- Introduction to Research Methods in Psychology
- Cognitive and Biopsychological Perspectives
- Exploring Psychology
- Cognitive Psychology
- Biopsychology
- Social and Critical Psychology
- Research Methods in Psychology
- Personality and Developmental Psychology
- Assessment in Psychology
- The Honours Project

Why study this course?

- ✓ This degree provides a foundation for work across statutory, voluntary and independent health and social care settings.
- ✓ Graduates are well placed for careers in health education and promotion, welfare, research, community mental health and care commissioning.
- ✓ Career options include service management, advocacy, education and training, and support roles working with diverse community groups.

Career progression

Graduates can pursue a wide range of career pathways. Common roles include Assistant Psychologist (AP), Trainee Psychological Wellbeing Practitioner (PWP), Education Mental Health Practitioner (EMHP), Children's Wellbeing Practitioner and Research Assistant.



Course details

Awarding body
University of Greater Manchester

Duration
Four years

Fees
Home students: £9,790 per year

Location
Holborn, Fitzrovia, Southall, Wembley or Kingsbury

Study mode
Full-time

► Find out more

For up-to-date information about this course, including delivery modes, please visit our website.



MSc Psychology

Course overview

Our MSc Psychology programme provides advanced knowledge of psychological principles and practices, preparing students for versatility in their career pathway. Ideal for those seeking to develop their theoretical knowledge and practical skills to make a meaningful impact in a variety of professional settings. The degree applies theory and research in positive psychology, mental health and wellbeing to real-world contexts, equipping graduates with the skills, insight and confidence to work in a range of professional settings.

Modules

This list is not exhaustive. Please see the course webpage for full details.

- Positive Psychology in Practice
- Qualitative and Quantitative Inquiry
- Current Debates in Psychology
- Psychology Dissertation
- Professional Issues in Psychology

Why study this course?

- ✓ Demonstrate a deep understanding of advanced psychological theories and methodologies.
- ✓ Conduct independent research, contribute to the field of psychology through empirical studies and critically evaluate psychological research and literature.
- ✓ Apply psychological principles to solve real-world problems and improve individual and community well-being.

Career progression

Graduates of the MSc Psychology programme are well-prepared for a range of careers, including mental health and wellbeing support roles, coaching, academic and applied research, human resources and organisational development. The programme also serves as a solid foundation for those wishing to pursue doctoral studies in psychology.



Course details

Awarding body

University of Greater Manchester

Duration

One year

Fees

Home students: £8,496

per year

International students: £17,500

per year

Location

Holborn, Fitzrovia, Southall,

Wembley or Kingsbury

Study mode

Full-time

► Find out more

For up-to-date information about this course, including delivery modes, please visit our website.



FEES AND FUNDING

For home students

Tuition fees (by level of study)

Programme/Level of study	2026/2027 UK Home Fee per academic year
Higher National Certificate (HNC)	£9,790
Higher National Diploma (HND)	£9,790
Foundation degree (FdSc)	£9,790
Foundation year routes	£9,790**
Bachelor's degrees	Full-time: £9,790. Part-time fees vary. Check individual course pages.
Top-up degrees	£9,790
Master's degrees	£8,496
Master of Business Administration (MBA)	£9,720 (MBA 3-year part-time – £3,240 per year)

***An additional one-off Pearson registration fee also applies to students studying an HNC programme. The applicable fees are as follows:**

HNC Engineering: £278.00

All other HNCs: £278.00

****From 1 August 2025, certain classroom-based foundation year courses will fall under a new lower tuition fee cap of £5,760 per year, subject to Parliamentary approval. These courses are limited to specific subjects defined as "classroom-based" under OfS Price Group D at the time of publication.**

Foundation years will be classified as either lower-fee (£5,760) or higher-fee (£9,790 for 2026/27) depending on the subject area. These fee limits apply to full-time foundation years offered by approved HE providers with an Access and Participation Plan (APP) and a Teaching Excellence Framework (TEF) award. Part-time foundation year fees will also be capped, with details outlined in the official guidance.





ENTRY REQUIREMENTS

In this section, you will find the entry requirements for RCL's range of qualifications.

Please note

- Proof of English (POE) is required for all applicants (exemptions may apply as per the admission policy).
- When providing your reference, we require a company email with email signature or letter headed paper from employer/ other referee.
- Translations are not required for qualifications in Latin. Qualifications in any other language will require translation from a certified authority.
- If your British passport is expired, then a valid driving license, birth certificate, naturalisation certificate or BRP card is required.
- If your passport for any other nationality has expired, then we will require a valid national identity card.

Higher National Certificates

Standard	Non-standard
<ul style="list-style-type: none">• Application form via online portal• Valid proof of ID. If you are a non-UK citizen, please share code or residence card permit (back and front pages).• GCSE passes at grades 'A to C' including English Language, and either a minimum of one A Level at grades A to E, or a BTEC Level 3 Certificate or Diploma, or an Access to Higher Education Certificate awarded by an approved further education institution; or a College-recognised certificated learning equivalent to the above.• Personal statement (approx. 450 words and relevant to your chosen course)• Photo (passport size headshot only)• Proof of address (dated within the last three months)• Intention to Study Meeting (ISM) (if applicable)• Proof of English Language Proficiency at IELTS 5.5 level (with no component below 5.0 and a minimum score of 5.5 in Reading and Writing)	<ul style="list-style-type: none">• Application form via online portal• Valid proof of ID. If you are a non-UK citizen, share code or residence card permit (back and front pages).• Up-to-date CV detailing work experience• Work reference (dated in the last six months) and/or evidence of employment covering a minimum of two years (full-time or part-time)• Personal statement (approx. 450 words and relevant to your chosen course)• Intention to Study Meeting (ISM)• Photo (passport size headshot only)• Proof of address (dated within the last three months)• Proof of English Language Proficiency at IELTS 5.5 level (with no component below 5.0 and a minimum score of 5.5 in Reading and Writing)

Higher National Diplomas

Standard	Non-standard
<ul style="list-style-type: none">• Application form via online portal• Valid proof of ID. If you are a non-UK citizen, please share code or residence card permit (back and front pages).• GCSE passes at grades 'A to C' including English Language, and either a minimum of one A Level at grades A to E, or a BTEC Level 3 Certificate or Diploma, or an Access to Higher Education Certificate awarded by an approved further education institution; or a College-recognised certificated learning equivalent to the above.• Personal statement (approx. 450 words and relevant to your chosen course)• Photo (passport size headshot only)• Proof of address (dated within the last three months)• Intention to Study Meeting (ISM) (if applicable)• Proof of English Language Proficiency at IELTS 5.5 level (with no component below 5.0 and a minimum score of 5.5 in Reading and Writing)	<ul style="list-style-type: none">• Application form via online portal• Valid proof of ID. If you are a non-UK citizen, share code or residence card permit (back and front pages).• Up-to-date CV detailing work experience• Work reference (dated in the last six months) and/or evidence of employment covering a minimum of two years (full-time or part-time)• Personal statement (approx. 450 words and relevant to your chosen course)• Intention to Study Meeting (ISM)• Photo (passport size headshot only)• Proof of address (dated within the last three months)• Proof of English Language Proficiency at IELTS 5.5 level (with no component below 5.0 and a minimum score of 5.5 in Reading and Writing)

Degree with foundation year

Standard	Non-standard
<ul style="list-style-type: none">• Application form via online portal• Valid proof of ID. If you are a non-UK citizen, please share code or residence card permit (back and front pages).• A minimum of two GCE A2-level passes (or equivalent), including any subjects; and five GCSEs at grade C or above (or equivalent), including English Language.• Personal statement (approx. 450 words and relevant to the course applied)• Photo (passport size headshot only)• Proof of address (dated within the last three months)• Intention to Study Meeting (ISM) (if applicable)• Proof of English Language Proficiency at IELTS 5.0 level, with no less than 4.5 in any band (or equivalent)	<ul style="list-style-type: none">• Application form via online portal• Valid proof of ID. If you are a non-UK citizen, please share code or residence card permit (back and front pages).• Up-to-date CV detailing work experience• Work reference (dated in the last six months) and/or evidence of employment covering a minimum of two years (full-time or part-time).• Personal statement (approx. 450 words and relevant to your chosen course)• Intention to Study Meeting (ISM)• Photo (passport size headshot only)• Proof of address (dated within the last three months)• Proof of English Language Proficiency at IELTS 5.0 level, with no less than 4.5 in any band (or equivalent)

Bachelor's degree

Standard	Non-standard
<ul style="list-style-type: none">• Application form via online portal• Valid proof of ID. If you are a non-UK citizen, please share code or residence card permit (back and front pages).• A minimum of two GCE A2-level passes (or equivalent), including any subjects and five GCSEs at grade C or above (or equivalent), including English Language.• Personal statement (approx. 450 words and relevant to your chosen course)• Photo (passport size headshot only)• Proof of address (dated within the last three months)• Intention to Study Meeting (ISM) (if applicable)• Proof of English Language Proficiency at IELTS 6.0 level, with no less than 5.5 in any band (or equivalent)	<ul style="list-style-type: none">• Application form via online portal• Valid proof of ID. If you are a non-UK citizen, share code or residence card permit (back and front pages).• Up-to-date CV detailing work experience• Work reference (dated in the last six months) and/or evidence of employment covering a minimum of three years (full-time or part-time)• Personal statement (approx. 450 words and relevant to your chosen course)• Intention to Study Meeting (ISM)• Photo (passport size headshot only)• Proof of address (dated within the last three months)• Proof of English Language Proficiency at IELTS 6.0 level, with no less than 5.5 in any band (or equivalent)

Top-up degrees

Standard
<ul style="list-style-type: none">• Application form via online portal• Valid proof of ID. If you are a non-UK citizen, please share code or residence card permit (back and front pages)• A relevant qualification at Level HE5, such as a Foundation Degree or HND, or a professional qualification at an equivalent level• Personal statement (approx. 450 words and relevant to your chosen course)• Photo (passport size headshot only)• Proof of address (dated within the last three months)• Intention to Study Meeting (ISM)• Proof of English Language Proficiency at IELTS 6.0 level, with no less than 5.5 in any band (or equivalent)

Master's degrees

Standard	Non-standard (MBA and MSc Psychology only)
<ul style="list-style-type: none">• Application form via online portal• Valid proof of ID. If you are a non-UK citizen, please share code or residence card permit (back and front pages)• UK honours degree/postgraduate degree (or equivalent) in a relevant subject" with "Honours degree (or equivalent) in a relevant subject and appropriate work experience• Personal statement (approx. 450 words and relevant to your chosen course)• Photo (passport size headshot only)• Proof of address (dated within the last three months)• Intention to Study Meeting (ISM) (if applicable)• Proof of English Language Proficiency at IELTS 6.0 level, with no less than 5.5 in any band (or equivalent)	<ul style="list-style-type: none">• Application form via online portal• Valid proof of ID. If you are a non-UK citizen, please share code or residence card permit (back and front pages)• Up-to-date CV detailing work experience and a UK degree/postgraduate degree (or equivalent) – please check the website for specific entry requirements" with "Up-to-date CV detailing work experience and an honours degree (or equivalent) in a relevant subject – please check the website for specific entry requirements• Work reference (dated in the last six months) and/or evidence of employment covering a minimum of two years (full-time or part-time)• Personal statement (approx. 450 words and relevant to your chosen course)• Intention to Study Meeting (ISM)• Photo (passport size headshot only)• Proof of address (dated within the last three months)• Proof of English Language Proficiency at IELTS 6.0 level, with no less than 5.5 in any band (or equivalent)

OUR ADMISSIONS PROCESS

Start your RCL journey in five steps...

Step 1: Register your interest

Once you have identified your desired course and registered your interest, your first point of contact will be one of our friendly and helpful Course Advisors.

The first step in our recruitment and admissions process will be attending an initial Information, Advice and Guidance (IAG) consultation with our Recruitment team. This online appointment typically takes 20-30 minutes.

Step 2: Make your application

All prospective students are required to fill out the online application form and submit relevant documents. There are two application routes: the standard entry (via academic achievement) and the non-standard entry (via relevant work experience).

Step 3: Provide English Language Requirement and/or attend ISM

If applicants do not have a qualification that demonstrates the required level of English proficiency, they will need to take our Click English test (CET).

In addition, a candidate may be required to attend an Intention to Study (ISM) meeting. The ISM typically lasts around 30 minutes and will assess the following criteria:

- Your academic and/or professional background
- Your understanding of and suitability for the course
- Your understanding of the subject area, related industry and relevant careers

Step 4: Receive offer letter

If all the outlined criteria are met, you will be issued a Conditional Offer/Offer in Principle letter. Your application will then be handed to our Enrolment team.

Partner offer process

If you apply for a programme offered by one of our partner universities, you will receive an Offer in Principle. The final decision will be made by the partner institution. Official offer letters are only issued after the following process:

- Where the prospective student has met all entry criteria, a file is created with the relevant documents.
- The folder is shared with the relevant team members from the partner institution. This is usually done on a weekly basis. The partner institution take up to five working days to process the files.
- Partner institutions send a list with the outcome of each application to RCL's Admissions Manager.
- If there are any outstanding conditions, the Admissions Manager will reassess the file and gather the missing documents as instructed by the university partner. The Admissions Manager will then resubmit the file.
- If there are no outstanding conditions, the applicant will receive an unconditional offer letter from the university partner.

Step 5: Applying for Student Finance

Tip: You can apply for Student Finance at any stage of your application using your preferred course/provider choice details. In fact, the earlier you do this the better, as it can take up to six weeks for Student Finance England (SFE) to process your application.

The quickest and easiest way to apply for funding is by completing SFE's online application form. Depending on your circumstances, the application process should only take around 30 minutes to complete. Your Course Advisor or a member of RCL's Finance team can help you apply.

You will need the following documents to complete your application:

- A valid passport
- Your National Insurance (NI) number
- Bank account details (this account must be in your name). If you do not currently hold a bank account in your name, you will need to open one **before** you can apply for student funding. Most high street banks can help you with this process and many have special offers and accounts for students.

Please note: There is also a paper version of the SFE application form available. The version that you use – whether paper or online – is dependent on your circumstances and could require further evidence for your application to be approved.

COME TO AN OPEN DAY



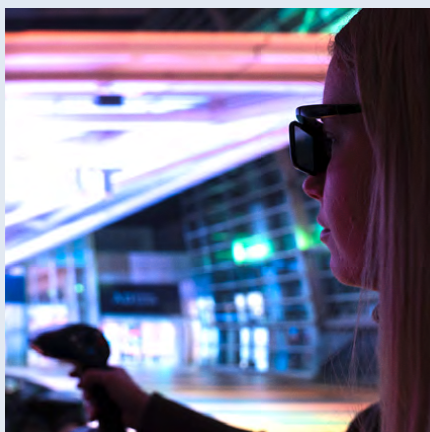
Meet us virtually

If you cannot meet us in-person, our virtual Open Days are an excellent way to experience RCL. Visit our website to book your place.



Meet us on campus

Unless you are considering a synchronous online learning option, the best way to experience RCL is by coming to one of our on-campus Open Days. This will allow you to explore our facilities up close and meet our academics, Student Support team and some of our current students.



We look forward to meeting you!



On-demand

You can watch our most recent virtual Open Day on-demand. Our content is available 24/7 to help you explore your course of interest, learn about the application process and hear from our course leaders and students. Visit our website to get started.



► Find out more
Visit our website



**FOR MORE INFORMATION
ABOUT OUR COURSES,
VISIT ►►► RCL.AC.UK**

► +44 (0)20 3053 6960

► info@rcl.ac.uk

Holborn

2-10 Princeton St
London, WC1R 4BH

Fitzrovia

Regent Hill House
153 Great Titchfield Street
London, W1W 5BD

Wembley

Madison House
24-28 London Road
Wembley, HA9 7EX

Kingsbury

Masons House
1-3 Valley Drive
London, NW9 9NG

Southall

Bishops House
39-47 High Street
Southall, UB1 3HF

Follow us

