


READY WHEN YOU ARE

Prospectus
Academic Year 2024/25







Introduction	04
Why choose Regent College London?	06
Our story	07
Our locations	08
Careers and employability	10
Academic partnerships	11
Our schools	12
Modular acceleration programme (MAP)	60
Fees and funding	61
Entry requirements	62
Our admissions process	64
Come to an Open Day	65

INTRODUCTION

It is our great pleasure to welcome you to Regent College London (RCL). We are delighted to introduce you to a place where education is not just a pathway, but a transformational experience. At RCL, we understand the delicate balance between personal commitments and academic ambitions, and we are committed to supporting you every step of the way as you navigate this journey with confidence.

Our mission is simple yet impactful: to empower individuals from all backgrounds with flexible learning opportunities that allow you to broaden your horizons, reach your goals and advance your career. Whether you are embarking on a new educational journey or seeking to enhance your professional qualifications, RCL offers a diverse range of high-quality, industry-relevant programmes – from Higher National Diplomas (HNDs) to master's degrees.

In collaboration with our partner institutions, our courses are developed with practical, real-world applications at the forefront. Together with our partners, we work closely with employers to ensure our curriculum equips you with the in-demand skills that are essential in today's competitive job market, boosting both your employability and career prospects.

What makes RCL truly special is not just the education we provide but the supportive community we foster. Our dedicated academic team, along with

our comprehensive Student Support services, is here to offer personalised guidance at every stage of your journey. In addition, all students have access to our complimentary Thinking into Character™ programme – a unique growth mindset course designed to foster creative thinking, build resilience and develop the character needed to succeed in your studies and beyond.

Our commitment to excellence is consistently reflected in the strong results we achieve in the National Student Survey, year after year. We take great pride in seeing our students excel, whether that is progressing in their current careers or continuing with further studies.

We warmly invite you to explore our prospectus, attend one of our Open Days, and imagine the exciting opportunities that await you here at RCL. We look forward to welcoming you into our vibrant, diverse community and watching you accomplish great things as part of the RCL family.

With warm regards,

Tharshiny Pankaj,
Group CEO

Dr Selva Pankaj,
CEO/Accountable Officer



**DR SELVA AND
THARSHINY PANKAJ**

WHY CHOOSE REGENT COLLEGE LONDON?

Flexible learning

RCL is proud to offer flexible learning schedules with day, evening and weekend classes. Students can choose from versatile delivery modes that align with their lifestyles – including in-person delivery, synchronous online delivery or blended learning.

We offer four separate enrolment dates each year and five study locations across London for enhanced accessibility and convenience.

Career-focused learning

Our courses are awarded by our UK university partners and authorised accrediting bodies and have been developed in collaboration with employers – focusing on practical, in-demand skills that enhance employability and career progression.

Informed by research and relevant to the real world, RCL's courses enable students and graduates to enter the job market with confidence.

High student satisfaction

RCL consistently achieves excellent results above the UK average in the annual National Student Survey, reflecting the quality, experience and impact of our educational offerings.

Extensive student support

Our students can access our robust Student Support and HubX ecosystems to enrich their educational journey. These include:

- Academic advice
- Study skills
- Career guidance
- Mental health support
- Financial guidance, including student loan and budgeting assistance

In addition, each student is assigned a dedicated Customer Support Officer (CSO) and Academic Support Officer (ASO) for a smooth educational journey.

Value-added education

RCL students receive free access to our exclusive Thinking into Character™ programme as well as Stanford Online courses.

Thinking into Character™ is a series of 12 online lessons specially developed to accelerate personal growth and professional success. The programme is designed and led by our Co-Founder and CEO/Accountable Officer, Dr Selva Pankaj. It is based on pioneering research into the science and methodology of personal achievement.

The Stanford Online portal gives RCL students exclusive access to a series of leadership and innovation courses. The courses are taught by Stanford faculty and are available online and on demand.



OUR STORY

1999

Selva and Tharshiny Pankaj start providing A-Level tutoring to students who require extra support.



2000

The Pankaj family establish Regent Group. Their tutoring initiative expands from their home to a dedicated facility in Rayners Lane, north-west London.

2010

The first Regent College London campus is established in Wembley. The College delivers BTEC Higher National Diplomas and provides students with alternative progression routes into higher education.



2013

RCL opens admissions to the public to reflect our commitment to widening access and participation.



Today

RCL now delivers a range of HND programmes validated by Pearson and is enjoying rapid growth.

We have partnered with University of Bolton, Buckinghamshire New University, St Mary's University and Pearson to deliver foundation year routes, foundation degrees, bachelor's degrees, top-up degrees, and master's degrees in a wide array of subjects.

OUR LOCATIONS

1 Kingsbury

Masons House, 1-3 Valley Drive
London, NW9 9NG

Travel connections

Kingsbury
Jubilee Line
5-minute walk

Buses

183 – 204 – 324

5 Wembley

Madison House, 24-28 London Road
Wembley, HA9 7EX

Travel connections

Wembley Central
Bakerloo and Overground Lines
5-minute walk

Buses

18 – 79 – 204 – 223 – 297 – N18 – 483

4 Southall

Regent College London
39-47 High Street, Southall, UB1 3HF

Travel connections

Southall
Elizabeth Line and National Rail
10-minute walk

Buses

SL8 – 207 – 483





2 Fitzrovia

Regent Hill House
153 Great Titchfield Street
London, W1W 5BD

Travel connections

Great Portland Street
Hammersmith & City, Circle and
Metropolitan Lines
 5-minute walk

Warren Street
Northern and Victoria Lines
 7-minute walk

Goodge Street
Northern Line
 11-minute walk

Buses

1 – 18 – 205 – 27 – 29 – 7


3 Holborn


2-10 Princeton St
London, WC1R 4BH

Study facilities

- IT Support Desk
- Virtual Reality Lab
- Sports and Nutrition Lab
- Electrical and Mechanical Labs

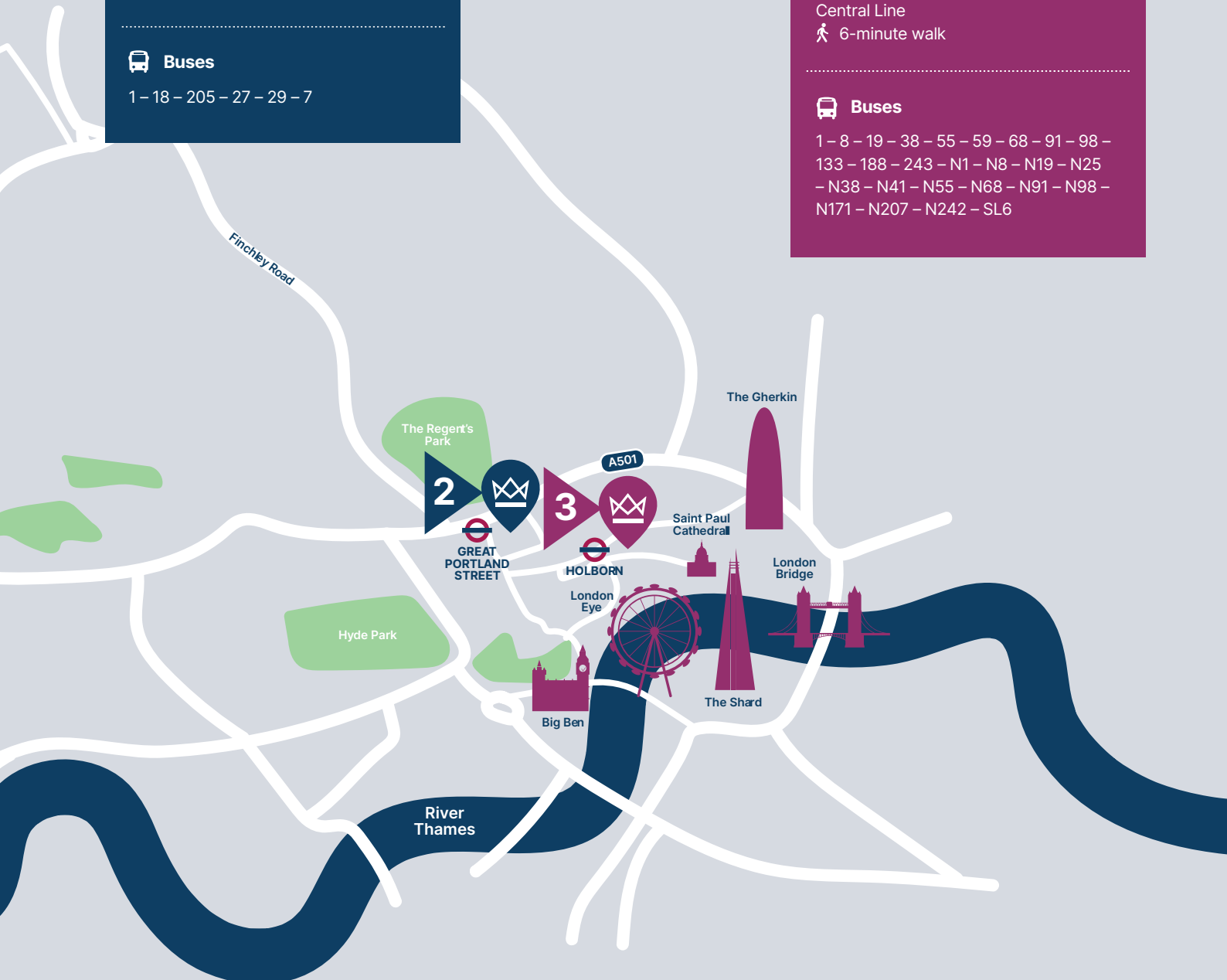
Travel connections

Holborn
Piccadilly and Central Lines
 7-minute walk

Chancery Lane
Central Line
 6-minute walk

Buses

1 – 8 – 19 – 38 – 55 – 59 – 68 – 91 – 98 –
133 – 188 – 243 – N1 – N8 – N19 – N25
– N38 – N41 – N55 – N68 – N91 – N98 –
N171 – N207 – N242 – SL6



CAREERS AND EMPLOYABILITY

We focus on delivering courses that can enhance your career prospects – from vocational courses to career opportunities with local businesses.

We provide a rich and rewarding student experience that instills the skills, insights and capabilities you need to work in many different areas of business. These include communication, decision-making, teamwork and problem-solving.

RCL is proud to offer a comprehensive range of support services, including a dedicated Careers Officer, pastoral support, careers advice and tailored job search assistance, all designed to equip you with the necessary knowledge to meet your career or higher education aspirations.

By focusing on the skills most valued by today's employers, our courses enable you to:

- Develop key business knowledge and skillsets
- Train for specific in-demand job opportunities
- Enhance your career prospects
- Progress to a higher qualification

Did you know?

Our Graduate Outcomes and Student Support teams regularly curate a calendar of events designed to give students a head start in the job market. These include workshops, job fairs, networking events and career talks featuring accomplished professionals sharing their insights.



ACADEMIC PARTNERSHIPS

RCL is proud to work with reputable learning institutions who share our values and commitment to student success.

These partnerships give our students access to enriching opportunities so they can achieve the qualifications they need.

Each of the foundation degrees, foundation year routes, bachelor's degrees, top-up degrees and master's degrees we offer are awarded by one of our four partner institutions.

Buckinghamshire New University

Buckinghamshire New University (BNU) is a modern UK institution known for its industry-focused programmes and ties with professional bodies. BNU offers a range of undergraduate and postgraduate courses in business, creative arts, nursing, sports and aviation. Emphasising hands-on learning, BNU prepares students for real-world careers and provides robust support services, work placements and employability resources to enhance career prospects.



St Mary's University

St Mary's University, Twickenham, is a respected UK institution with roots dating back to 1850. Known for its supportive environment and community spirit, it offers undergraduate and postgraduate courses in sports science, business, education, theology and the arts. Emphasising academic excellence and practical experience, St Mary's prepares students for successful careers and boasts extensive sports facilities, with a reputation for nurturing top athletic talent.

University of Bolton

The University of Bolton in Greater Manchester is known for its student-centred, industry-focused approach. Offering undergraduate and postgraduate programmes in engineering, business, health, creative arts and social sciences, the university prioritises hands-on learning and employability. With modern facilities, industry placements and professional accreditation opportunities, Bolton provides a supportive community and practical education to equip students with career-ready skills.

Pearson

Pearson is a well-known and respected operator in the education sector. Pearson's BTEC qualifications provide a more practical, real-world approach to learning and skills development alongside a key theoretical background in comparison with traditional academic qualifications.



BUSINESS

Welcome from the Dean



Kashif Khan
Dean of Business
MS, MSc, BCS, FHEA, Prince 2

Welcome to the School of Business at RCL.

Established in 2010, our School offers a wide range of respected business courses, covering key areas such as marketing, business management, business administration and international management. As a student at RCL, you will delve into essential business disciplines that foster critical thinking, creativity and an understanding of the broader societal impact of business decisions.

Our programmes are designed not only to spark stimulating debates but also to nurture an interest in social justice and responsible business practices. Throughout your journey with us, you will develop advanced professional skills, preparing you to influence key decisions in today's complex and interconnected world, whether you wish to advance your own career or start your own business.

We offer foundation year routes, Higher National Diplomas, as well as undergraduate and postgraduate programmes. These courses are crafted to develop entrepreneurial leaders and innovators, equipped to navigate and excel in the globalised economy of tomorrow.

With dedicated support throughout your studies, you will have access to the skills, resources and networks needed to achieve your ambitions.

Our graduates are well-prepared for a wide variety of career paths, including advertising, marketing, finance, project management, human resources and business development.

Foundation Year

BSc (Hons) Business Management with Foundation Year*

BA (Hons) Marketing with Foundation Year*

BA (Hons) Business Management with Foundation Year*

Higher National Diplomas

HND in Business (Business Management)*

Undergraduate

BSc (Hons) Business Management*

Top-Up

BSc (Hons) Business Management Top-Up*

Postgraduate

Master of Business Administration (MBA)*

MSc International Management*

MSc Accountancy and Financial Management*

* Full-time





BSc (Hons) Business Management with Foundation Year

Course overview

Our BSc (Hons) Business Management with Foundation Year programme covers people management, business law, marketing, strategic management, information systems, big data, project management, finance and innovation. This full-time programme develops critical thinking, problem-solving and data analysis skills to enhance employability.

Modules

This list is not exhaustive. Please see the course webpage for full details.

- Academic Skills and PDP
- Business in Practice
- Further Academic Skills
- World of Work
- Applied Business Finance
- Practical Digital Marketing
- Professional and Academic Skills Development
- Financial Decision Making in Business
- Business Environment
- Contemporary Issues in Marketing
- Information Systems and Big Data Analysis
- People and Performance
- Business Management and Career Development
- Leadership Management and Organisational Culture
- Project Management
- Strategic Management
- Enterprise, Innovation and Creativity
- Business Case Study Analysis

Why study this course?

- ✓ Improve your employability.
- ✓ Develop essential, in-demand skills in communication, data analysis, teamwork and problem-solving.
- ✓ Understand the business environment in local, national and international contexts.

Career progression

This Foundation Year course equips you with specialist knowledge and a broad understanding of business operations. Graduates gain a competitive edge in the job market or entrepreneurship, ready for diverse roles or further studies in marketing, finance, HR, computing or international business.



Course details

Awarding body
University of Bolton

Duration
Four years

Fees
Domestic students: £9,250
per year

Location
Holborn, Fitzrovia, Southall,
Wembley or Kingsbury

Study mode
Full-time

► Find out more

For up-to-date information about this course, including delivery modes, please visit our website.



BA (Hons) Marketing with Foundation Year

Course overview

Discover marketing with our BA (Hons) Marketing with Foundation Year programme. The first year builds essential academic skills, covering marketing and business concepts. The core curriculum explores consumer behaviour, market research, digital marketing, branding and strategy, with micro modules in finance, management, entrepreneurship and sustainability.

Modules

This list is not exhaustive. Please see the course webpage for full details.

- Business Essentials
- Academic and Professional Development
- Digital Skills Development
- Career and Contemporary Employability Skills
- Global Business Context
- Introducing Inclusive People Management
- Data Analytics and Decision Making
- Accounting and Finance for Managers
- Contemporary Marketing Essentials
- Team Psychology*
- Social Media Fundamentals*
- Enterprise and Opportunity*
- Reflection of Character Development*
- Thinking into Character – Personal Development Plan*

*Micro module

Why study this course?

- ✓ Explore and understand key marketing theories and principles.
- ✓ Learn in-demand skills that employers are actively looking for.
- ✓ Ideal for students who wish to fast-track their journey from the classroom to the workplace.

Career progression

Our BA (Hons) Marketing with Foundation Year programme equips you with a robust understanding of marketing theories, marketing's role in business, as well as practical skills. Graduates are ready for careers in advertising, social media marketing, copywriting, PR, brand management, strategy or further study.



Course details

Awarding body

Buckinghamshire New University

Duration

Four years

Fees

Domestic students: £9,250
per year

Location

Southall and Kingsbury

Study mode

Full-time

► Find out more

For up-to-date information about this course, including delivery modes, please visit our website.



► Please note:

Entry to this course is subject to Buckinghamshire New University's specific English language requirements. For more details, please visit our website.

BA (Hons) Business Management with Foundation Year

Course overview

Our BA (Hons) Business Management with Foundation Year programme provides a solid understanding of business fundamentals and essential academic skills. The course covers organisational behaviour, strategic planning, financial analysis, marketing strategies and innovation management, combining lectures, seminars, case studies and practical projects to apply theory to real-world scenarios.

Modules

This list is not exhaustive. Please see the course webpage for full details.

- Business Essentials
- Academic and Professional Development
- Digital Skills Development
- Career and Contemporary Employability Skills
- Global Business Context
- Introducing Inclusive People Management
- Data Analytics and Decision Making
- Accounting and Finance for Manager
- Contemporary Marketing Essentials
- Team Psychology*
- Social Media Fundamentals*
- Enterprise and Opportunity*
- Reflection of Character Development*
- Thinking into Character – Personal Development Plan*

*Micro module

Why study this course?

- ✓ Develop sought-after skills in communication, analysis and problem-solving.
- ✓ Enhance your employability.
- ✓ Understand the business environment in a local, national and international context.
- ✓ Gain highly transferable skills.

Career progression

Upon completing the BA (Hons) Business Management, you will be ready for management careers or to pursue your own business ambitions. The programme covers all areas of business management. Postgraduate options include a Postgraduate Certificate in Business Leadership, an MA in Leadership and Management, or an MBA.



Course details

Awarding body

Buckinghamshire New University

Duration

Four years

Fees

Domestic students: £9,250 per year

Location

Southall and Kingsbury

Study mode

Full-time

► Find out more

For up-to-date information about this course, including delivery modes, please visit our website.



► Please note:

Entry to this course is subject to Buckinghamshire New University's specific English language requirements. For more details, please visit our website.

HND in Business (Business Management)

Course overview

Our HND in Business (Business Management) is an industry-focused qualification that will prepare you for a successful career by providing a solid understanding of essential business management principles and practices. Through case studies, engaging projects and group work, you will explore the real-world business situations faced by today's managers.

Modules

This list is not exhaustive. Please see the course webpage for full details.

- Business and the Business Environment
- Marketing Processes and Planning
- Human Resource Management
- Leadership and Management
- Accounting Principles
- Managing a Successful Business Project (Pearson Set)

Why study this course?

- ✓ Obtain a globally recognised qualification.
- ✓ Gain the first two years of a degree and progress to a one-year top-up university course to earn a full undergraduate degree.
- ✓ Ideal for managers who require a degree-level business qualification.

Career progression

Upon successful completion of this two-year course, students will have strong career prospects in diverse areas of business, including advertising, marketing, project management, human resources and business development.



Course details

Awarding body
Pearson

Duration
Two years

Fees
Domestic students: £9,250
per year

Location
Kingsbury, Wembley, Fitzrovia and
Holborn

Study mode
Full-time

► Find out more

For up-to-date information about this course, including delivery modes, please visit our website.



BSc (Hons) Business Management

Course overview

Our BSc (Hons) Business Management programme will prepare you for a global career, covering people management, business law, marketing, strategic management, information systems, big data, project management, finance and innovation. The course develops key employability skills like critical thinking, problem-solving and data analysis.

Modules

This list is not exhaustive. Please see the course webpage for full details.

- Professional and Academic Skills Development
- Financial Decision Making in Business
- Business Environment
- Contemporary Issues in Marketing
- Information Systems and Big Data Analysis
- People and Performance
- Business Management and Career Development
- Leadership Management and Organisational Culture
- Project Management
- Enterprise, Innovation and Creativity
- Business Case Study Analysis

Why study this course?

- ✓ Develop sought-after skills in communication, analysis and problem-solving.
- ✓ Enhance your employability.
- ✓ Understand the business landscape in a local, national and international context.
- ✓ Gain highly transferable skills.

Career progression

Our three-year BSc (Hons) Business Management course prepares you for general management and specialisations in business accounting, finance, enterprise, HR management, business law, marketing, retail or supply chain management. This degree equips you with essential skills to thrive and adapt in a changing world.



Course details

Awarding body
University of Bolton

Duration
Three years

Fees
Domestic students: £9,250
per year

International students: £15,950
per year

Location
Holborn, Fitzrovia, Southall,
Wembley or Kingsbury

Study mode
Full-time

► Find out more

For up-to-date information about this course, including delivery modes, please visit our website.



BSc (Hons) Business Management Top-Up

Course overview

Our BSc (Hons) Business Management (Top-Up) programme will equip you with essential skills – whether you are looking to pursue a career in business or advance in your current career. Discover key concepts such as people management, business law, marketing, strategic management, information systems and big data, project management and finance.

Modules

This list is not exhaustive. Please see the course webpage for full details.

- Business Project
- Dissertation
- Strategic Management
- International HRM
- Learning and Development
- Work and the Employment Relationship
- E-Commerce and Contemporary Marketing Practice
- Global Consumer Behaviour
- Integrated Digital Marketing Strategy
- Retail Management
- Advanced Data Analytics
- Information Security and Risk Management

Why study this course?

- ✓ This course is ideal if you are looking to pursue a career in business or advance in your current career.
- ✓ The course is designed to help you to understand the business environment and the needs of employers in local, national and international contexts.
- ✓ Develop highly sought-after skills such as communication, data analysis, time management, team working and problem-solving.

Career progression

The BSc (Hons) Business Management Top-Up course offers you a route into general management as well as specialist areas, such as business accounting and finance, enterprise, human resource management, business law, marketing, and retail or supply chain management.



Course details

Awarding body

University of Bolton

Duration

One year

Fees

Domestic students: £9,250
per year

International students: £15,950
per year

Location

Holborn, Fitzrovia, Southall,
Wembley or Kingsbury

Study mode

Full-time

► Find out more

For up-to-date information about this course, including delivery modes, please visit our website.



Master of Business Administration (MBA)

Course overview

Our Master of Business Administration (MBA) programme develops strategic thinking, critical knowledge of organisations and leadership practices. It enhances analytical and creative approaches to business issues, preparing professionals for career advancement and improving business management practices in today's global economy.

Modules

This list is not exhaustive. Please see the course webpage for full details.

- Leadership and Management
- Marketing and Operations
- Financial Management and Decision Making
- Strategy
- Professional Project
- Academic Skills and Professional Practice

Why study this course?

- ✓ This qualification has a global appeal and can dramatically improve your employability.
- ✓ Gain necessary business skills and knowledge needed for roles in various industries.
- ✓ Create opportunities for promotion or a career change.

Career progression

Our Master of Business Administration qualification opens global career opportunities across private, public and voluntary sectors. These include finance, technology, blue-chip companies, SMEs and sectors like accountancy, PR, financial management, media, advertising, banking, logistics, project management and more.



Course details

Awarding body
University of Bolton

Duration
12-15 months

Fees
Domestic students: £9,720 per year
International students: £15,950 per year

Location
Holborn, Fitzrovia, Southall, Wembley or Kingsbury

Study mode
Full-time

► Find out more

For up-to-date information about this course, including delivery modes, please visit our website.



MSc International Management

Course overview

Our MSc International Management programme prepares aspiring managers for global careers in both the public and private sector. It covers global management theories, cultural contexts and topics like corporate strategy, HR, sustainability and finance, enhancing analytical and decision-making skills for diverse roles.

Modules

This list is not exhaustive. Please see the course webpage for full details.

- International Marketing Management
- Information Systems for Business Performance
- HR in a Global Context
- Research Methods
- Dissertation
- Strategy
- Innovation and Entrepreneurship
- Academic Skills and Professional Practice
- Financial Management and Decision Making

Why study this course?

- ✓ Learn how to adapt to the complex challenges that shape today's globalised marketplace.
- ✓ Get empowered with essential business skills and knowledge.
- ✓ Gain a globally recognised qualification and make your mark in your chosen field.

Career progression

This master's degree prepares graduates for global management careers in various sectors, including private, public and voluntary. Graduates can explore roles in marketing, HR, finance, information systems, strategic management, consultancy, international banking and commodities markets.



Course details

Awarding body

University of Bolton

Duration

12-15 months

Fees

Domestic students: £8,496 per year

International students: £15,950 per year

Location

Holborn, Fitzrovia, Southall, Wembley or Kingsbury

Study mode

Full-time

► Find out more

For up-to-date information about this course, including delivery modes, please visit our website.



MSc Accountancy and Financial Management

Course overview

Our MSc Accountancy and Financial Management programme is tailored for individuals aiming to advance their careers in accounting and finance. This comprehensive programme covers key aspects of accountancy, financial management and strategic financial planning. It equips students with critical analytical skills, technical expertise and a thorough understanding of financial principles, preparing them for leadership roles in various financial sectors.

Modules

This list is not exhaustive. Please see the course webpage for full details.

- Dissertation
- Research Methods for Accountants
- Strategic Business Leader
- Strategic Business Reporting

Why study this course?

- ✓ Designed in collaboration with industry experts, ensuring that the curriculum is aligned with current industry standards and practices.
- ✓ Graduates may receive exemptions from professional accounting bodies, accelerating their path to becoming qualified accountants.
- ✓ Learn from seasoned professionals and academics who bring a wealth of knowledge and practical experience to the classroom.
- ✓ Explore diverse career prospects in finance, including roles in management, consultancy and corporate finance.

Career progression

Graduates of the MSc Accountancy and Financial Management programme can pursue careers as chartered accountants, financial analysts, corporate finance managers, management consultants, tax advisors and internal auditors. The programme equips graduates with essential skills for high-demand financial sector roles, ensuring professional success.



Course details

Awarding body
University of Bolton

Duration
12-15 months

Fees
Domestic students: £8,496 per year
International students: £15,950 per year

Location
Holborn, Fitzrovia, Southall, Wembley or Kingsbury

Study mode
Full-time

► Find out more

For up-to-date information about this course, including delivery modes, please visit our website.





HEALTH AND SPORTS SCIENCE

Welcome from the Dean



Dr Morris Anglin
Dean of Health and Sports Science
PhD, MSPH, FRSPH

Hello and welcome to the School of Health and Sports Science at RCL.

This is an interdisciplinary field that combines aspects of health and social care, social sciences, nutrition and sports to understand how society, health and physical activity and exercise holistically impact the human body and overall health.

Health and Sports Science combines scientific principles with practical applications to improve the quality of life for individuals of all ages and activity levels.

Here is an overview of the key components of Health and Sports Science:

- Sociology
- Psychology
- Public Health
- Physiology
- Nutrition
- Anatomy
- Biomechanics
- Research
- Social Care
- Social Science

We offer a range of health and social care, social science and sports nutrition courses at different study levels, inviting students of all capabilities to enhance their skills and knowledge.

Careers in Health and Sports Science are diverse, offering opportunities in various sectors, including clinical settings, sports organisations, fitness industries, public health and research.

From January 2025, we are excited to offer a new range of psychology courses, which will delve deep into psychological theories, research methods, and practical applications. Students will learn about the various aspects of human behaviour and mental processes, preparing them for a variety of professional roles within the field.

Foundation Year

BSc (Hons) Health and Social Care with Foundation Year*

BSc (Hons) Health and Social Science with Foundation Year*

BSc (Hons) Sport and Exercise Science with Foundation Year*

BSc (Hons) Sport and Exercise Nutrition with Foundation Year*

BSc (Hons) Psychology with Foundation Year* (Subject to approval)

Higher National Diplomas

HND in Health Care Practice*

Undergraduate

BSc (Hons) Health and Social Care*

BSc (Hons) Psychology**
(Subject to approval)

Postgraduate

MSc Social Care, Health and Wellbeing*

MSc Psychology* (Subject to approval)

MSc Psychology (Conversion)*
(Subject to validation)

Top-Up

BSc (Hons) Health and Social Care Top-Up*

* Full-time

** Full-time, Part-time





BSc (Hons) Health and Social Care with Foundation Year

Course overview

Our BSc (Hons) Health and Social Care with Foundation Year programme is designed to help you become a knowledgeable and compassionate professional, ready to address the challenges of today's healthcare environment. Led by a highly experienced and dedicated team, the programme focuses on exploring fundamental principles of care, professional values, ethical practice, promoting physical and mental health, emotional wellbeing and safeguarding diversity and inclusion.

Modules

This list is not exhaustive. Please see the course webpage for full details.

- Reading Modern Society
- The Individual and Society
- Research Methods in Social Science
- The World of Work
- Reading Contemporary Society
- Self-Reflection and Academic Skill Development
- Legal and Ethical Issues
- Introduction to Social Policy
- Principles of Care
- Anatomy and Physiology for Health and Social Care
- Introduction to Research and Evidence-Based Practice
- Enhancing Communication and Academic Skills
- Group Dynamics and Working in Teams
- Work-Based Experience
- Health Promotion – Challenges and Opportunities
- Social Inclusion, Empowerment and Health
- Employability Skills
- Person Centred Health and Social Care
- Research Proposal/Methods
- Compassionate Health and Social Care
- Dissertation/Research Project

Why study this course?

- ✓ This degree will give you a good foundation, allowing you to work in a wide range of statutory, voluntary and independent settings.
- ✓ Graduates with a health and social care background may also be considered for careers in health education and health promotion, welfare, health research, community mental health and care management services.
- ✓ Graduates may seek roles as service managers and coordinators, in advocacy, education and training, or as technicians and support workers helping children and families, older and disabled people, drug and alcohol abusers, and people with mental health problems.

Career progression

There is a growing demand for health and social care workers who can work flexibly to accommodate the complex health and social care needs of individuals, families and communities. This Foundation Year degree will also enable you to develop a range of key transferable employability skills, including written and verbal communication skills, IT skills, the ability to work independently and in a team, research and data analysis skills, and the ability to provide support and guidance.



Course details

Awarding body
University of Bolton

Duration
Four years

Fees
Domestic students: £9,250
per year

Location
Holborn, Fitzrovia, Southall,
Wembley or Kingsbury

Study mode
Full-time

► Find out more

For up-to-date information about this course, including delivery modes, please visit our website.



BSc (Hons) Health and Social Science with Foundation Year

Course overview

Embark on a stimulating journey with our BSc (Hons) Health and Social Science with Foundation Year programme. This course focuses on innovative health and social science research, providing a comprehensive understanding of society's complexities. It equips students with essential skills in critical thinking, communication and research for success.

Modules

This list is not exhaustive. Please see the course webpage for full details.

- Understanding the Social World
- Academic and Personal Professional Development
- Digital Skills Development
- Career and Contemporary Employability Skill
- Health and Wellbeing in the Social World
- The Social World Sociological Perspective on Health
- Understanding Contemporary Society
- Understanding Welfare Policies and Perspectives in Society
- Contemporary Sociological Debates: The World of Media
- Mental Health and Wellbeing of Children and Young People*
- Reflection of Character Development*
- Social Media Fundamentals*
- Personal Development Plan*

*Micro module

Why study this course?

- ✓ Support the most vulnerable people in society while gaining a recognised qualification.
- ✓ Designed for those who aspire to pursue a career in the social, wellbeing, health and voluntary sectors.
- ✓ Develop your knowledge and skills through the core modules to advance your practice and enhance career choices.
- ✓ Learn from our highly qualified academics with expertise across the health and social science field.

Career progression

Graduates have found careers in teaching, youth justice, mental health, medical rehabilitation, housing associations, social care, charity organisations and community development. However, there are plenty of other areas in which your qualification can be an advantage.



Course details

Awarding body

Buckinghamshire New University

Duration

Four years

Fees

Domestic students: £9,250
per year

Location

Southall and Kingsbury

Study mode

Full-time

► Find out more

For up-to-date information about this course, including delivery modes, please visit our website.



► Please note:

Entry to this course is subject to Buckinghamshire New University's specific English language requirements. For more details, please visit our website.

BSc (Hons) Sport and Exercise Science with Foundation Year

Course overview

Our BSc (Hons) Sport and Exercise Science with Foundation Year programme applies scientific principles to human performance through physiology, psychology and biomechanics. Delivered with St Mary's University, it covers modules that will prepare you for careers in sports and physical activity, offering flexible study options and insights from industry experts.

Modules

This list is not exhaustive. Please see the course webpage for full details.

- Introduction to Research Methods and Individual Project
- Critical Skills in Science
- Chemistry of Nature
- Professional Integrity in Science
- Foundations of Life
- Principles of Physics and Mathematics
- Introduction to Research
- Physiology of Exercise
- Fundamentals of Sport Psychology and Skill Acquisition
- Functional Anatomy
- Fundamentals of Biomechanics
- Practical Field Tests in Sport

Why study this course?

- ✓ Designed to enable you to enter an undergraduate degree – even if you do not hold traditional qualifications or cannot meet the necessary requirements to enter the standard three-year degree.
- ✓ Our foundation year will build your confidence, knowledge and skills for further study.
- ✓ Our academic team use their extensive experience to provide an applied focus, exploring the factors that contribute to enhanced sports performance.

Career progression

As there is a growing interest in sport and exercise science, there are increased job opportunities available. Potential job roles for graduates include exercise physiologist, fitness centre manager, personal trainer, primary/secondary school teacher, sports administrator, sports coach or sports development officer.



Course details

Awarding body
St Mary's University

Duration
Four years

Fees
Domestic students: £9,250 per year

Location
Holborn, Fitzrovia, Southall, Wembley and Kingsbury

Study mode
Full-time

► Find out more

For up-to-date information about this course, including delivery modes, please visit our website.



BSc (Hons) Sport and Exercise Nutrition with Foundation Year

Course overview

Our BSc (Hons) Sport and Exercise Nutrition with Foundation Year programme. This course provides essential skills recognised by professional bodies, preparing you for a dynamic global industry. Graduates enter a growing field with diverse career opportunities in sports, health and wellbeing.

Modules

This list is not exhaustive. Please see the course webpage for full details.

- Critical Skills in Science
- Professional Integrity in Science
- Introduction to Research Methods and Individual Project
- The Chemistry of Nature
- Foundation of Life
- Principles of Physics and Mathematics
- Energy and Nutrition
- Research Methods 1
- Micronutrients
- Physiology of Exercise
- Food Science and Novel Foods
- Professional Skills of Nutritionists

Why study this course?

- ✓ Lower entry requirements enable students to study Sport and Exercise Nutrition without the previous qualifications or achievements that most other colleges or universities across the UK require.
- ✓ Our foundation year will help you learn the basics and core modules, so you can take your first steps into this exciting, global business.

Career progression

There is a growing interest in sport and exercise science and job opportunities are steadily increasing too. Upon graduating, you can explore roles across the fitness and sports nutrition industry, as well as in education, health promotion and working with elite sports teams and individual athletes.



Course details

Awarding body
St Mary's University

Duration
Four years

Fees
Domestic students: £9,250
per year

Location
Holborn, Fitzrovia, Southall,
Wembley and Kingsbury

Study mode
Full-time

► Find out more

For up-to-date information about this course, including delivery modes, please visit our website.



BSc (Hons) Psychology with Foundation Year

Course overview

Our BSc (Hons) in Psychology with Foundation Year provides a solid foundation in psychology, social sciences and research methods, preparing you for degree-level study. The foundation year offers essential skills and insights into psychology's core principles. Through diverse modules, you will deepen your understanding of psychology while selecting specialisations aligned with your career goals.

Modules

This list is not exhaustive. Please see the course webpage for full details.

- Introduction to Psychology
- Biological Bases of Behaviour
- Cognitive Psychology
- Developmental Psychology
- Social Psychology
- Research Methods in Psychology

Why study this course?

- ✓ Perfect if you are interested in psychology and would like to gain a good foundation in the subject.
- ✓ Graduates are equipped for careers as professional psychologists or in fields such as teaching, human resources, policing, the armed forces and social work.
- ✓ Graduates are prepared for further study at postgraduate level.

Career progression

Graduates can pursue various career paths, including clinical psychology, counselling, educational psychology, human resources and research. The course also provides a solid foundation for further study at postgraduate level.



Course details

Awarding body
University of Bolton

Duration
Four years

Fees
Domestic students: £9,250 per year

Location
Holborn, Fitzrovia, Southall, Wembley or Kingsbury

Study mode
Full-time
Subject to approval

► Find out more

For up-to-date information about this course, including delivery modes, please visit our website.



HND in Health Care Practice (Integrated Health and Social Care)

Course overview

Studying our HND in Health Care Practice (Integrated Health and Social Care) equips you to positively impact vulnerable individuals. The course covers essential healthcare industry practices, develops professional skills and enhances career prospects. Small class sizes and expert faculty ensure personalised guidance and a strong foundation for further study.

Modules

This list is not exhaustive. Please see the course webpage for full details.

- Law, Policy and Ethical Practice in HSC
- Demonstrating Professional Principles and Values in Health and Social Care Practice
- Supporting the Individual Journey through Integrated Health and Social Care
- Fundamentals of Evidence-Based Practice (Pearson-set Project)

Why study this course?

- ✓ Designed for students who wish to pursue or advance their career in healthcare practice or related fields.
- ✓ Ideal for students who wish to continue their education through applied learning.
- ✓ Explore the principles of care, professional values, attitudes and behaviour and much more.
- ✓ This course will help you become a knowledgeable and compassionate care professional.

Career progression

The HND in Health Care Practice (Integrated Health and Social Care) prepares students for a wide range of employment opportunities across private and public sector organisations. Potential job roles include senior care assistant, senior support worker in a range of health and care settings, integrated support worker, health educator and healthcare manager.



Course details

Awarding body
Pearson

Duration
Two years

Fees
Domestic students: £9,250
per year

Location
Kingsbury, Wembley, Fitzrovia and
Holborn

Study mode
Full-time

► Find out more

For up-to-date information about this course, including delivery modes, please visit our website.



BSc (Hons) Health and Social Care

Course overview

Our BSc (Hons) Health and Social Care programme prepares you to make a positive impact on the lives of vulnerable people and work in diverse settings, including local authorities, health promotion and care units. Graduates can pursue careers in health education, welfare, community mental health and various support roles.

Modules

This list is not exhaustive. Please see the course webpage for full details.

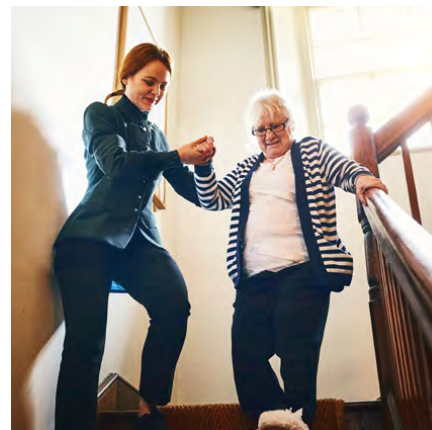
- Legal and Ethical Issues
- Introduction to Social Policy
- Principles of Care
- Anatomy and Physiology for Health and Social Care
- Introduction to Research and Evidence-Based Practice
- Enhancing Communication and Academic Skills
- Group Dynamics and Working in Teams
- Work-Based Experience
- Health Promotion – Challenges and Opportunities
- Social Inclusion, Empowerment and Health
- Employability Skills
- Person-Centred Health and Social Care
- Research Proposal/Methods
- Compassionate Health and Social Care
- Dissertation/Research Project

Why study this course?

- ✓ Develop the values, practical skills and knowledge necessary for a successful career in the global health and social care environment.
- ✓ Explore the principles of care, professional values, attitudes and behaviour, ethical practice of care, promoting physical and mental health and emotional wellbeing, safeguarding, and promoting diversity and inclusion.
- ✓ Become a knowledgeable and compassionate care professional.

Career progression

There is a growing demand for health and social care workers who can work flexibly to accommodate the needs of individuals, families and communities. Students will develop a range of transferable skills to boost employability, including written and verbal communication skills, IT skills, the ability to work independently and in a team, research and data analysis skills, and the ability to provide support and guidance.



Course details

Awarding body
University of Bolton

Duration
Three years

Fees
Domestic students: £9,250 per year
International students: £15,950 per year

Location
Holborn, Fitzrovia, Southall, Wembley or Kingsbury

Study mode
Full-time

► Find out more

For up-to-date information about this course, including delivery modes, please visit our website.



BSc (Hons) Psychology

Course overview

Our BSc (Hons) Psychology programme offers a thorough exploration of psychological theories, research methods and practical applications. The course is designed to provide students with a deep understanding of the various aspects of human behaviour and mental processes, preparing them for a wide range of careers in psychology and related fields.

Modules

This list is not exhaustive. Please see the course webpage for full details.

- Biological Psychology
- Cognitive Psychology
- Developmental Psychology
- Social Psychology
- Research Methods

Why study this course?

- ✓ Gain insights into the complexities of human thought, emotion and behaviour through a diverse range of psychological theories and practical applications.
- ✓ Engage in cutting-edge research projects, developing skills in research design, data analysis and critical evaluation of scientific literature.
- ✓ Prepare for a variety of careers in psychology, including clinical, educational, organisational and research roles, or pursue further studies in specialised postgraduate programmes.
- ✓ The programme is accredited by relevant psychological associations, ensuring that your degree meets professional standards and enhances your career prospects in psychology.

Career progression

Graduates of the BSc (Hons) Psychology programme can pursue careers in clinical psychology, educational psychology, human resources, research and academia, and counselling and therapy. They are well-equipped to diagnose and treat mental health issues, support learning development, improve workplace dynamics and provide therapy and support.



Course details

Awarding body
University of Bolton

Duration
Full-time: Three years
Part-time: Four and a half years

Fees
Domestic students: £9,250 per year
International students: £15,950 per year
Part-time: £6,000 per year
(£3,000 for final six months)

Location
Holborn, Fitzrovia, Southall,
Wembley or Kingsbury

Study mode
Full-time, Part-time
Subject to approval

► Find out more

For up-to-date information about this course, including delivery modes, please visit our website.



BSc (Hons) Health and Social Care Top-Up

Course overview

Our BSc (Hons) Health and Social Care Top-Up programme will help you positively impact the lives of vulnerable people. This course covers key topics like safeguarding, elder care and mental health. It builds on previous healthcare studies, preparing you for senior roles or your own healthcare business, offering extensive employment opportunities.

Modules

This list is not exhaustive. Please see the course webpage for full details.

- Research Proposal/Methods
- Compassionate Health and Social Care
- Dissertation/Research Project

Why study this course?

- ✓ This one-year course is particularly aimed at those who wish to develop critical, cognitive, professional and intellectual approaches to healthcare.
- ✓ Suitable for those who already have a broad healthcare-related HND, foundation degree or Level 5 equivalent.
- ✓ We offer flexible study modes to help you fit your studies around your busy life, and our London campuses run weekend, weekday and evening study options.

Career progression

Throughout the course, you will develop new skills and enhance your current knowledge. Upon completion, you will be well-positioned for employment in the healthcare sector or further study. Graduates can work in health education, promotion, research, community mental health, care management services, social work and nursing (additional training required).



Course details

Awarding body
University of Bolton

Duration
One year

Fees
Domestic students: £9,250 per year

Location
Holborn, Fitzrovia, Southall, Wembley or Kingsbury

Study mode
Full-time

► Find out more

For up-to-date information about this course, including delivery modes, please visit our website.



MSc Psychology

Course overview

Our MSc Psychology programme provides advanced knowledge of psychological principles and practices, preparing students for diverse careers. Ideal for those seeking to deepen their expertise, it focuses on research, clinical practice and professional development, equipping graduates for significant contributions to the field of psychology.

Modules

This list is not exhaustive. Please see the course webpage for full details.

- Advanced Research Methods
- Cognitive Neuroscience
- Clinical Psychology
- Social and Developmental Psychology
- Professional Issues in Psychology

Why study this course?

- ✓ Graduates will demonstrate a deep understanding of advanced psychological theories and methodologies.
- ✓ Conduct independent research and contribute to the field of psychology through empirical studies.
- ✓ Apply psychological principles to solve real-world problems and improve individual and community wellbeing.
- ✓ Critically evaluate psychological research and literature.

Career progression

Graduates of the MSc Psychology programme are well-prepared for a range of careers, including clinical psychology, counselling, academic and applied research, human resources and organisational development. The programme also serves as a solid foundation for those wishing to pursue doctoral studies in psychology.



Course details

Awarding body
University of Bolton

Duration
One year

Fees
Domestic students: £8,496
per year

Location
Holborn, Fitzrovia, Southall,
Wembley or Kingsbury

Study mode
Full-time
Subject to approval

► Find out more

For up-to-date information about this course, including delivery modes, please visit our website.



MSc Psychology (Conversion)

Course overview

Our MSc Psychology (Conversion) programme is ideal for graduates from other fields who wish to pursue a career in psychology. It provides a comprehensive foundation, covering key areas, research methods, theories and practices. Students will develop the ability to conduct research, analyse data and apply psychological knowledge in various settings.

Modules

This list is not exhaustive. Please see the course webpage for full details.

- Foundations of Psychology
- Research Methods
- Biological Psychology
- Cognitive Psychology
- Developmental Psychology
- Social Psychology
- Clinical and Health Psychology
- Individual Differences

Why study this course?

- ✓ Gain a deep understanding of advanced psychological theories and methodologies.
- ✓ Conduct independent research and contribute to the field of psychology through empirical studies.
- ✓ Apply psychological principles to solve real-world problems and improve individual and community-wide wellbeing.
- ✓ Critically evaluate psychological research and literature.

Career progression

The MSc Psychology (Conversion) programme prepares graduates for a range of careers, including clinical psychology, counselling, academic and applied research, human resources and organisational development. The programme also serves as a solid foundation for those wishing to pursue doctoral studies in psychology.



Course details

Awarding body
University of Bolton

Duration
One year

Fees
Domestic students: £8,496
per year

Location
Holborn, Fitzrovia, Southall,
Wembley or Kingsbury

Study mode
Full-time

► Find out more

For up-to-date information about this course, including delivery modes, please visit our website.



MSc Social Care, Health and Wellbeing

Course overview

Our MSc Social Care, Health and Wellbeing programme provides an advanced understanding of the health and social care sector, including equality, diversity and collaboration. You will gain critical awareness of current issues and develop practical skills for your career. We also emphasise lifelong learning skills for personal and professional growth.

Modules

This list is not exhaustive. Please see the course webpage for full details.

- Dissertation
- Postgraduate Preparation for Research Design
- Critical Reading and Writing Skills
- Equality and Diversity for Human Services
- Leadership and Innovation
- Contemporary Issues, Policy and Practice
- Collaborative and Integration in Health and Social Care
- Person-Centered Approaches and Service User Involvement in Health and Social Care

Why study this course?

- ✓ Graduates will be able to demonstrate systematic knowledge and understanding of a range of health and social care-related principles, concepts and values.
- ✓ This degree will allow you to work in a wide range of statutory, voluntary and independent settings – including local authority teams, health promotion projects, refugee and asylum service hospitals, sheltered accommodation, hospices and day centres, and residential care units.
- ✓ Demand for skilled and qualified health and social care workers is increasing.

Career progression

This qualification provides the opportunity to develop your knowledge for an existing role, improve your prospects or make a career change. It can also be a first step towards an academic career. Graduates can explore many different fields – both in the UK and abroad – including multi-agency teams, health promotion projects, refugee and asylum services, hospitals, sheltered accommodation, hospices, day centres and residential care units.



Course details

Awarding body
University of Bolton

Duration
One year

Fees
Domestic students: £8,496 per year
International students: £15,950 per year

Location
Holborn, Fitzrovia, Southall, Wembley or Kingsbury

Study mode
Full-time

► Find out more

For up-to-date information about this course, including delivery modes, please visit our website.



ENGINEERING AND COMPUTING

Welcome from the Dean



Ilias Oraifige

Dean of Engineering and Computing

CEng, FIMechE, FHEA, PhD, MSc, BEng, PGCertHE

Hello and welcome to the School of Engineering and Computing at RCL.

We are committed to developing the next generation of high-achieving, ambitious and confident professionals who will go on to shape business and society. Our academics are recognised, practising experts. They transfer knowledge to you through high-quality teaching.

Studying our Engineering and Computing programmes will equip you with knowledge and skills that will enable you to extend your development capabilities and give you valuable experience of real-life scenarios. It is an excellent way for prospective employers to assess your skills for your first job or for career development.

As a student, you will be at the forefront of everything we do. We aim to make

your learning experience stimulating and challenging, taught by staff who are passionate about their subjects. We will:

- Provide a high-quality educational experience that is in line with good academic practice and protect your study interests.
- Ensure that your educational journey is supported by state-of-the-art Engineering and Computing labs and workshop facilities.
- Give timely and constructive feedback for formative and summative assessments, where appropriate, to enhance your learning and achievement.
- Provide opportunities for you to give feedback about the quality of your programme and constituent modules/units of study, facilities and services that you receive, and respond to your feedback in a clear and transparent manner, acting upon it wherever practically possible.

The School has also been awarded professional accreditation for its undergraduate degrees from the prestigious IET (Institution of Engineering and Technology) and the IMechE (Institution of Mechanical Engineers).

Finally, on behalf of all my colleagues at the SoEC and RCL as a whole, I would like to thank you for your interest in our programmes and hope to see you at the College soon.

Foundation Year

BSc (Hons) Computing with Foundation Year*

BEng (Hons) Software Engineering with Foundation Year*

BEng (Hons) Electrical and Electronic Engineering with Foundation Year*

BEng (Hons) Mechanical Engineering with Foundation Year*

Higher National Diplomas

HND Engineering*

HND Digital Technologies*

Undergraduate

BSc (Hons) Computing*

BEng (Hons) Electrical and Electronic Engineering**

BEng (Hons) Mechanical Engineering*

BEng (Hons) Software Engineering**

Postgraduate

MSc Software Engineering*

* Full-time

** Full-time, Part-time





VR TEDLab

RCL's Holborn campus is home to our state-of-the-art TEDLab. This facility offers unparalleled capabilities and resources to foster transformative teaching, learning and assessment experiences. It is designed to bring complex datasets to life for digital technology, computing and engineering students through a hands-on approach to learning.

The virtual world is brought to life by Virtualis's proprietary Visionary Render software. This allows for the creation of bespoke VR scenes that imitate real life in 1:1 scale.

Students can seamlessly integrate TEDLab into their schedules, accommodating their existing commitments. TEDLab operates seven days a week, including evenings, to ensure optimal accessibility.

As part of our VR TEDLab initiative, students are equipped with VR/AR headsets and simulation software to utilise alongside their individual laptops. By transitioning to cloud-hosted DARE software and eliminating the reliance on technicians, students are liberated from the constraints of campus-bound, timetabled sessions.

While traditional IML setups impose limitations on room occupancy and line-of-sight requirements, the synergy between TEDLab and VR TEDLab enables more students to participate concurrently. This not only maximises flexibility but also optimises cost-effectiveness.

VR TEDLab extends the boundaries of learning by enabling remote access to teaching sessions conducted in TEDLab, as well as facilitating independent practice with VR/AR simulations at any time.

As a result, students can cultivate practical skills autonomously, seamlessly integrating learning into their lives and enhancing their employability. In essence, VR TEDLab bridges the gap between theory and practice, empowering students to develop vital skills while balancing their diverse responsibilities.





BSc (Hons) Computing with Foundation Year

Course overview

Our BSc (Hons) Computing with Foundation Year programme is designed to help you flourish through attentive teaching, industry insights and excellent IT resources. Following their foundation year, students will have the opportunity to focus on aspects of computing that match their personal interests and strengths or support their long-term career or study goals.

Modules

This list is not exhaustive. Please see the course webpage for full details.

- Fundamentals of Programming
- Logical Analysis and Problem-Solving
- Computer Systems
- Foundation Project
- Math for Computing
- Computer Science Fundamentals
- Computing Infrastructure
- Databases
- Object Oriented Programming
- Systems Analysis and Design
- Web Design and Programming
- Cloud Technologies
- Research and Professional Issues
- Undergraduate Project
- Emerging Technologies

Why study this course?

- ✓ This foundation year course will prepare you to move onto the full degree programme.
- ✓ Graduates find their skills in high demand across a wide range of industries.
- ✓ Combines theoretical study and practical projects.
- ✓ Learn subject-specific skills such as programming, systems, databases, computer platforms, website production and networking.
- ✓ Learn soft skills including communication, leadership and organisational skills.

Career progression

Computing skills are essential globally, making graduates employable anywhere. Career areas include network design, programming, web development, software applications, IT support, consultancy, e-commerce and business analysis. Typical employers include IT consultancies, service providers, telecommunications, aerospace, finance, retail, healthcare, manufacturing and the public sector. Graduates might also start their own web design or IT consultancy businesses.



Course details

Awarding body
University of Bolton

Duration
Four years

Fees
Domestic students: £9,250
per year

Location
Holborn, Fitzrovia, Southall,
Wembley or Kingsbury

Study mode
Full-time

► Find out more

For up-to-date information about this course, including delivery modes, please visit our website.



BEng (Hons) Software Engineering with Foundation Year

Course overview

Our BEng (Hons) in Software Engineering with Foundation Year programme tasks you with building and maintaining software systems and other computer-based solutions. By examining all elements of the process, this degree offers you a focused yet fully rounded education. Explore the underlying principles of software engineering while gaining knowledge and practical experience of the latest technologies.

Modules

This list is not exhaustive. Please see the course webpage for full details.

- Fundamentals of Programming
- Logical Analysis and Problem-Solving
- Computer Systems
- Foundation Project
- Math for Computing
- Computer Science Fundamentals
- Computing Infrastructure
- Databases
- Object Oriented Programming
- Advanced Programming
- Data Structures and Algorithms
- Applied Software Engineering
- Systems Analysis and Design
- Research and Professional Issues
- Undergraduate Project
- Agile Programming

Why study this course?

- ✓ Develop the technical knowledge needed to successfully progress within the software systems field.
- ✓ Gain experience in communication and presentation, problem-solving and time management.
- ✓ Learn in-demand skills that prepare you for a career in software engineering.

Career progression

Software engineering graduates often start out as programmers and work their way up to positions of greater responsibility. Relevant jobs include games development, systems development, web design, web development, search engine optimisation, information systems management and business analysis.



Course details

Awarding body
University of Bolton

Duration
Four years

Fees
Domestic students: £9,250
per year

Location
Holborn, Fitzrovia, Southall,
Wembley or Kingsbury

Study mode
Full-time

► Find out more

For up-to-date information about this course, including delivery modes, please visit our website.



BEng (Hons) Electrical and Electronic Engineering with Foundation Year

Course overview

Our four-year BEng (Hons) in Electrical and Electronic Engineering with Foundation Year programme covers essential engineering practices and theories. The first year provides a grounding in engineering, electronics and mathematics. Delivered in partnership with the University of Bolton, the course prepares you for a global engineering career with optional modules in renewable energies and advanced embedded systems.

Modules

This list is not exhaustive. Please see the course webpage for full details.

- Foundation Principles 0
- Foundation Principles 1
- Foundation Principles 2
- Engineering Study Skills
- Engineering Technology
- Engineering Environment
- Introductory Engineering Mathematics
- Introductory Electrical Principles
- Introductory Analogue Electronics
- Introductory Embedded Systems
- Engineering Modelling and Analysis
- Instrumentation and Control
- Intermediate Digital Electronics and Communications
- Intermediate Electrical Principles and Enabling Power Electronics
- Intermediate Embedded Systems
- Analogue Signal Processing and Communications
- Management and Enterprise in Engineering
- Major Project
- Electrical Machines and Power Electronic Drives
- Engineering Electromagnetism

Why study this course?

- ✓ Develop the capabilities to pursue a successful career in engineering.
- ✓ Prepare for the workplace with professional management and leadership skills.
- ✓ Apply engineering principles to critically analyse key engineering processes.
- ✓ Graduates can progress into relevant fields, such as advanced manufacturing, product design, biomedical engineering or artificial intelligence.

Career progression

Demand for creative, skilled engineers – both nationally and internationally – is growing rapidly. In addition to technical knowledge, students will develop highly transferrable skills, such as IT, finance and management. Graduates can also pursue further study in a specialist field of research, such as an MSc or PhD in internet engineering, nanotechnology, wireless and optical communications, and telecommunications.



Course details

Awarding body
University of Bolton

Duration
Four years

Fees
Domestic students: £9,250
per year

Location
Holborn, Fitzrovia, Southall,
Wembley or Kingsbury

Study mode
Full-time

► Find out more

For up-to-date information about this course, including delivery modes, please visit our website.



► **This programme is accredited by the Institution of Engineering and Technology (IET) on behalf of the Engineering Council.**



BEng (Hons) Mechanical Engineering with Foundation Year

Course overview

Our BEng (Hons) Mechanical Engineering degree with Foundation Year programme equips you with the skills and knowledge to thrive in the diverse field of mechanical engineering. The course covers mathematical and statistical methods for solving complex problems, workload management and communication skills, providing a strong foundation in engineering principles.

Modules

This list is not exhaustive. Please see the course webpage for full details.

- Foundation Principles 1
- Foundation Principles 2
- Engineering Study Skills
- Engineering Technology
- Engineering Environment
- Engineering Principles 1
- Engineering Principles 2
- Projects and Systems
- Graphical Communications and Computer Modelling
- Engineering Applications
- Mechanics of Materials and Machines
- Thermofluids and Control Systems
- Engineering Modelling and Analysis
- Engineering in Business and Society
- Major Project (AME6011)
- Advanced Materials and Structures
- Management and Enterprise in Engineering
- Advanced Thermofluids and Control
- Finite Element and Difference Solutions

Why study this course?

- ✓ Prepare for a rewarding career in the sector, where talent is in high demand.
- ✓ Develop cognitive, intellectual and problem-solving skills via key principles of mechanical engineering.
- ✓ Graduates can pursue careers in many relevant sectors, including advanced manufacturing, product design, biomedical engineering and artificial intelligence.

Career progression

This degree is recognised nationally and internationally. Graduates can explore a range of careers in engineering and relevant sectors, including aerospace, automotive, chemical, construction, medicine, sport and consumer goods. The demand for skilled and qualified mechanical engineers is increasing, which is fostered by a transforming economic landscape, driven by the need for advanced engineering solutions.



Course details

Awarding body
University of Bolton

Duration
Four years

Fees
Domestic students: £9,250
per year

Location
Holborn, Fitzrovia, Southall,
Wembley or Kingsbury

Study mode
Full-time

► Find out more

For up-to-date information about this course, including delivery modes, please visit our website.



HND Engineering

Course overview

Our Higher National Diploma (HND) in Engineering programme blends study with practical learning. It is ideal for anyone looking to take their first steps into higher education, with a hands-on approach, before either going on to employment or a degree.

Modules

This list is not exhaustive. Please see the course webpage for full details.

Electrical / Electronic Engineering modules

- Research Project
- Professional Engineering Management (Pearson-set)
- Further Mathematics
- Industrial Power, Electronics and Storage

Mechanical HND Engineering modules

- Research Project
- Professional Engineering Management (Pearson-set)
- Advanced Mechanical Principles
- Virtual Engineering
- Further Mathematics

Why study this course?

- ✓ Designed to help set you apart from the crowd.
- ✓ Developed to suit both aspiring engineers and those currently working in the sector.
- ✓ No matter what sort of engineering interests you, this course will help you to achieve your goals.
- ✓ Ideal for those who would like to gain the first two years of an Engineering degree, and then move onto a one-year top-up at university to gain a full undergraduate degree.

Career progression

This HND prepares students for a wide range of employment opportunities across private and public sector organisations. Job roles for successful candidates include electronic engineer, mechanical engineer, automotive engineer and maintenance engineer. Further study and experience in engineering can also prepare you for roles such as senior quality engineer and senior geotechnical engineer.



Course details

Awarding body
Pearson

Duration
Two years

Fees
Domestic students: £9,250
per year

Location
Kingsbury, Wembley, Fitzrovia and
Holborn

Study mode
Full-time

► Find out more

For up-to-date information about this course, including delivery modes, please visit our website.



HND Digital Technologies

Course overview

Our Higher National Diploma (HND) in Digital Technologies programme blends theoretical learning with practical application, preparing students for advanced roles in the tech industry or further academic study. Graduates will gain competencies in digital transformation, programming, network management and data visualisation, enhancing their employability and career prospects in various technology sectors.

Modules

This list is not exhaustive. Please see the course webpage for full details.

- Professional Practice in the Digital Economy
- Innovation and Digital Transformation
- Business Intelligence
- Internet of Things
- Emerging Technologies

Why study this course?

- ✓ Designed to help set you apart from the crowd.
- ✓ Key areas include cyber security, software development, data analytics and cloud networking.
- ✓ No matter what kind of digital technology interests you, this course will help you achieve your goals.
- ✓ Benefit from academic advice, personal tutoring and career guidance.
- ✓ Gain a recognised qualification that enhances your employability and academic progression.

Career progression

This HND prepares students for a wide range of employment opportunities across private and public sector organisations. Potential job roles include business analyst, cyber security technologist, data analyst, digital community manager, junior animator, network engineer, software developer, and software tester.



Course details

Awarding body
Pearson

Duration
Two years

Fees
Domestic students: £9,250 per year

Location
Kingsbury, Wembley, Fitzrovia and Holborn

Study mode
Full-time

► Find out more

For up-to-date information about this course, including delivery modes, please visit our website.



BSc (Hons) Computing

Course overview

Our BSc (Hons) Computing programme offers focused attention, industry insights and excellent IT resources. It prepares graduates for global careers in network design, programming, web development, software applications, IT support, consultancy, e-commerce and business analysis. Potential employers include IT consultancies, service providers, telecommunications, aerospace, finance, retail, healthcare, manufacturing and the public sector. Graduates may also establish their own web design or IT consultancy businesses.

Modules

This list is not exhaustive. Please see the course webpage for full details.

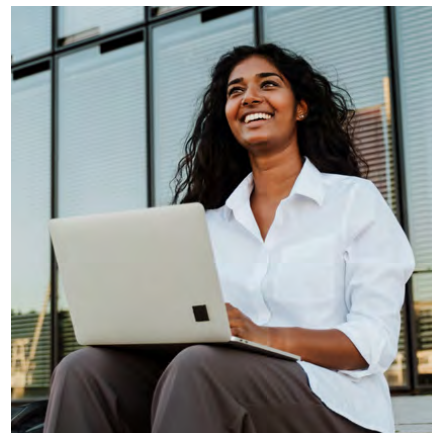
- Maths for Computing
- Computer Science Fundamentals
- Databases
- Object Oriented Programming
- Systems Analysis and Design
- Web Design and Programming
- Cloud Technologies
- Research Professional Issues
- Undergraduate Project
- Emerging Technologies

Why study this course?

- ✓ Gain a wide-ranging, industry-informed degree.
- ✓ As you progress, you can focus on aspects that match your personal interests or support your career or study goals.
- ✓ Small class sizes offer more personalised interaction with our dedicated and enthusiastic lecturers – many of whom come with extensive industry insights and experience.

Career progression

The skills a Computing degree provides are in high demand across diverse industries, blending theoretical study with practical projects in programming, systems, databases, computer platforms, website production and networking. This programme also enhances communication, leadership and organisational skills, which are greatly valued by employers.



Course details

Awarding body
University of Bolton

Duration
Three years

Fees
Domestic students: £9,250
per year

Location
Holborn, Fitzrovia, Southall,
Wembley or Kingsbury

Study mode
Full-time

► Find out more

For up-to-date information about this course, including delivery modes, please visit our website.



BEng (Hons) Electrical and Electronic Engineering

Course overview

Our BEng (Hons) Electrical and Electronic Engineering programme, validated by the University of Bolton, equips you with essential skills. It covers circuit design, signal processing and control systems, preparing you for professional roles in the industry. The course supports lifelong learning and prepares engineers for global career opportunities.

Modules

This list is not exhaustive. Please see the course webpage for full details.

- Engineering Environment
- Introductory Engineering Mathematics
- Introductory Electrical Principles
- Introductory Analogue Electronics
- Introductory Embedded Systems
- Engineering Modelling and Analysis
- Instrumentation and Control
- Intermediate Digital Electronics and Communications
- Intermediate Electrical Principles and Enabling Power Electronics
- Intermediate Embedded Systems
- Analogue Signal Processing and Communications
- Management and Enterprise in Engineering
- Major Project
- Electrical Machines and Power Electronic Drives
- Engineering Electromagnetism

Why study this course?

- ✓ Develop real-world engineering knowledge and skills through a combination of theory and practical applications.
- ✓ Learn about cutting-edge and emerging technologies such as Smart Grids that are transforming global electricity delivery systems.
- ✓ Graduates will demonstrate systematic knowledge, such as applying engineering principles to critically analyse key processes.
- ✓ Graduates can progress into a career in many fields including advanced manufacturing, product design, biomedical engineering or artificial intelligence, among many others. You may also choose to study a master's degree.
- ✓ Gain the confidence to explore a career in various engineering disciplines.

Career progression

Graduates can work in local authorities, manufacturing, power and water companies, renewable energy firms or building services. Alternatively, you can pursue further study with an MSc or PhD in internet engineering, nanotechnology, wireless and optical communications or telecommunications.



Course details

Awarding body
University of Bolton

Duration
Full-time: Three years
Part-time: Four and a half years

Fees
Domestic students: £9,250 per year

Part-time: £6,000 per year
(£3,000 for final six months)

Location
Holborn, Fitzrovia, Southall,
Wembley or Kingsbury

Study mode
Full-time, Part-time

► Find out more

For up-to-date information about this course, including delivery modes, please visit our website.



BEng (Hons) Mechanical Engineering

Course overview

Our BEng (Hons) Mechanical Engineering programme prepares you for global demand in automotive and nanotechnology sectors. This flexible programme covers multiple engineering disciplines, meeting UK-SPEC standards, and provides the knowledge and skills for registration as an Incorporated or Chartered Engineer.

Modules

This list is not exhaustive. Please see the course webpage for full details.

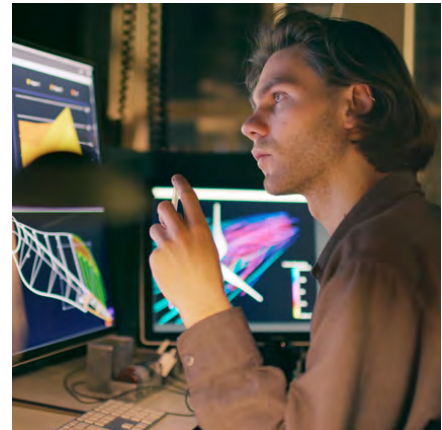
- Engineering Environment
- Engineering Principles 1
- Engineering Principles 2
- Projects and Systems
- Graphical Communications and Computer Modelling
- Engineering Applications
- Mechanics of Materials and Machines
- Thermofluids and Control Systems
- Engineering Modelling and Analysis
- Engineering in Business and Society
- Major Project
- Advanced Materials and Structures
- Management and Enterprise in Engineering
- Advanced Thermofluids and Control
- Finite Element and Difference Solutions

Why study this course?

- ✓ Ideal for those who wish to pursue a career in engineering.
- ✓ Prepares prospective engineers for meaningful professional employment in the mechanical engineering sector.
- ✓ You will develop cognitive, intellectual and problem-solving skills associated with mechanical engineering.
- ✓ The need for skilled and qualified mechanical engineers is increasing, which is fostered by a transforming economic landscape.
- ✓ With a degree in mechanical engineering, you will be able to pursue a career in a wide range of industries including advance manufacturing, product design, biomedical engineering, artificial intelligence and many more.

Career progression

Your qualification will be recognised in both the UK and around the world. After graduation, you can pursue a career in manufacturing or other areas of science and technology, such as sustainable energy. Relevant job roles are often in research and development, design, production and plant management, or you may choose to continue your formal education in the form of an MSc or a research degree.



Course details

Awarding body
University of Bolton

Duration
Three years

Fees
Domestic students: £9,250
per year

Location
Holborn, Fitzrovia, Southall,
Wembley or Kingsbury

Study mode
Full-time

► Find out more

For up-to-date information about this course, including delivery modes, please visit our website.



► **This course is accredited by the Institution of Mechanical Engineers (IMechE) under licence from the UK regulator, the Engineering Council.**

Institution of
**MECHANICAL
ENGINEERS**

Engineering
Council

BEng (Hons) Software Engineering

Course overview

Our BEng (Hons) Software Engineering programme enables you to forge your own path into specialisms and potential career options within various sectors. The course provides a comprehensive education in software development, from foundational principles to advanced techniques in programming, system design and software project management.

Modules

This list is not exhaustive. Please see the course webpage for full details.

- Maths for Computing
- Computer Science Fundamentals
- Computing Infrastructure
- Databases
- Object Oriented Programming
- Advanced Programming
- Data Structures and Algorithms
- Applied Software Engineering
- Systems Analysis and Design
- Research and Professional Issues
- Undergraduate Project
- Agile Programming

Why study this course?

- ✓ Explore the underlying principles of software engineering, while gaining knowledge and practical experience of the latest technologies.
- ✓ Learn about the technical and human aspects involved in software systems and design, systems analysis, programming, database specification and design, and system security.
- ✓ Students will also gain experience in communication and presentation, problem-solving and time management.
- ✓ Develop industry-relevant skills that prepare you for a career in software engineering.

Career progression

Software engineers work across the software development lifecycle, including requirements, coding, testing, deployment and maintenance. Graduates gain technical and transferable skills like advanced IT, analytical, communication, creativity and project management. Demand for qualified software engineers is rising due to economic transformation and technology needs.



Course details

Awarding body
University of Bolton

Duration
Full-time: Three years
Part-time: Six years

Fees
Domestic students: £9,250 per year
International students: £15,950 per year
Part-time blended: £4,625 per year

Location
Holborn, Fitzrovia, Southall,
Wembley or Kingsbury

Study mode
Full-time, Part-time

► Find out more

For up-to-date information about this course, including delivery modes, please visit our website.



MSc Software Engineering

Course overview

Our MSc Software Engineering programme offers advanced understanding of software methodologies, development and resource analysis. Graduates can pursue careers in games, systems, web development, SEO, information systems management, web design and business analysis. RCL provides dedicated student support throughout your studies.

Modules

This list is not exhaustive. Please see the course webpage for full details.

- Professional Practice
- Research Methods
- Contemporary Software Engineering Practices
- Advanced Software Development
- Dev Ops
- Data Analysis and Visualisation
- InfoSec
- Project

Why study this course?

- ✓ Gain cognitive, intellectual and transferable skills that are valued in the job market.
- ✓ Our excellent academic teams deliver engaging lessons to our students.
- ✓ Small class sizes ensure one-to-one advice and help when needed.
- ✓ Graduates can explore careers in various engineering disciplines, such as web development, quality assurance and much more.
- ✓ Related fields including advanced manufacturing, product design, biomedical engineering or artificial intelligence.

Career progression

Our MSc Software Engineering degree will stimulate your levels of creative thinking and enhance your problem-solving and decision-making techniques, allowing you to impress employers and make your mark within the industry. This course also paves the way for PhD research studies in software engineering and computing-related subjects.



Course details

Awarding body
University of Bolton

Duration
One year

Fees
Domestic students: £8,496 per year
International students: £15,950 per year

Location
Holborn, Fitzrovia, Southall, Wembley or Kingsbury

Study mode
Full-time

► Find out more

For up-to-date information about this course, including delivery modes, please visit our website.





LAW

Welcome from the Director



Emma Brett
Director of Law
SFHEA, MSc, PGCert, BA (Hons)

Welcome to the School of Law at RCL.

Our foundation year, undergraduate and postgraduate Law courses are designed to provide a robust understanding of UK law, spark engaging debates and inspire creative thinking with a focus on social justice.

As a Law student at RCL, you will become immersed in areas such as criminal law, human rights and civil litigation, examining legal frameworks while gaining hands-on experience through case studies and mock trials.

We equip our students with key analytical and transferable skills that are highly valued by employers, enhancing employability and professional worth in the workplace.

Undergraduate students are encouraged to develop an in-depth knowledge of their subject, supported every step of the way to achieve their goals and ambitions. Postgraduate students have the opportunity to specialise in areas such as international law, human rights or corporate law, furthering their expertise while boosting career prospects in academia, legal practice and policy-making.

Our graduates are prepared to explore a wide range of career paths, from government legal policy and the civil service to forensic accounting, business leadership and corporate law.

We invite you to explore our Law courses and discover how you can shape the future of this dynamic field.

Foundation Year

LLB (Hons) Law
with Foundation Year*

Undergraduate

LLB (Hons) Law*

Postgraduate

LLM International
Business Law*

* Full-time





LLB (Hons) Law with Foundation Year

Course overview

Our LLB (Hons) Law with Foundation Year programme will provide you with the professional competencies of functioning legal knowledge and applied skills as required for the Solicitors Qualifying Examination to become a solicitor in England and Wales. It also satisfies the academic stage of training to become a barrister and allows you to proceed to the vocational state of training.

Modules

This list is not exhaustive. Please see the course webpage for full details.

- Academic and Research Skills
- Law in Context
- Mooting and Interviewing
- Core Legal Principles
- Academic Language and Skills 3
- English Legal System and Foundation Legal Skills
- Contract Law
- Criminal Law
- Public Law
- Equity and Trusts
- Professionals in Practice
- Law of Tort
- European Law
- Land Law
- Legal Skills
- Preparation for Practice
- Professional Standards and the Commercial Environment
- Dissertation
- Employment Law

Why study this course?

- ✓ Develop the professional competencies of functioning legal knowledge and applied skills as required for the Solicitors Qualifying Examination.
- ✓ Learn the knowledge and transferable skills needed to stand out to future employers.
- ✓ Online learning provides additional flexibility.

Career progression

Graduates can pursue various careers, including becoming a barrister or advocate, working in-house in legal teams, or roles such as civil service administrator, consumer rights advisor, legal executive, customs officer, probation officer, charity officer, detective and more.



Course details

Awarding body
University of Bolton

Duration
Four years

Fees
Domestic students: £9,250
per year

Location
Holborn, Fitzrovia, Southall,
Wembley or Kingsbury

Study mode
Full-time

► Find out more

For up-to-date information about this course, including delivery modes, please visit our website.



LLB (Hons) Law

Course overview

Delivered by a range of expert tutors and academics, our LLB (Hons) Law programme will give you in-demand analytical and transferable skills that will enhance your employability and value in the workplace. This course offers many flexible study options, meaning you can choose which style of learning suits your lifestyle, whether that is during weekends, evenings or the daytime.

Modules

This list is not exhaustive. Please see the course webpage for full details.

- English Legal System and Foundation Legal Skills
- Criminal Law
- Public Law
- Equity and Trusts
- Contract Law
- Professionals in Practice

Why study this course?

- ✓ Ideal for students who wish to enter a career in the legal profession.
- ✓ Learn the knowledge and transferable skills needed to stand out to future employers.
- ✓ If you have a passion for law, and want to challenge injustice, this is the degree for you.
- ✓ Graduates can explore different job roles within the field of law.
- ✓ Online learning provides additional flexibility.

Career progression

Our LLB Law degree is ideal for students interested in becoming a solicitor, barrister or in-house lawyer. It also prepares students for diverse careers in the civil service, criminal justice, social services, probation, the charitable sector and business.



Course details

Awarding body
University of Bolton

Duration
Three years

Fees
Domestic students: £9,250
per year

Location
Holborn, Fitzrovia, Southall,
Wembley or Kingsbury

Study mode
Full-time

► Find out more

For up-to-date information about this course, including delivery modes, please visit our website.



LLM International Business Law

Course overview

Whether your first degree is in law or business, this Postgraduate Law and Business degree provides specialist legal knowledge for advising or managing businesses globally. Learn how to think critically, construct arguments and process large amounts of data. Flexible study options and small group sizes ensure individual support.

Modules

This list is not exhaustive. Please see the course webpage for full details.

- Fundamental Academic Legal Skills and the English Legal System
- Corporate Governance
- International Business Law
- International Human Rights Law
- Individual Employment Law
- Public International Law
- Independent Legal Research Project
- Financial and Economic Crime
- Legal Tech/Fin Tech
- International Dispute Resolution
- Islamic Insurance (Takaful)
- Islamic Business Transaction Law
- International Marketing Management
- Corporate and Social Responsibility
- Corporate Reporting
- Strategic Management and Leadership
- Dissertation
- Research Skills and Methods in Law

Why study this course?

- ✓ Develop the analytical and critical skills essential for formulating legal arguments.
- ✓ Learn the knowledge and transferable skills needed to stand out to future employers.
- ✓ Online learning provides additional flexibility.

Career progression

Graduates can achieve career progression in law or business, such as working in-house in various professions, government legal policy roles, civil service, forensic accounting, local government, business management and corporate roles.



Course details

Awarding body

University of Bolton

Duration

One year

Fees

Domestic students: £8,496 per year

International students: £15,950 per year

Location

Holborn, Fitzrovia, Southall, Wembley or Kingsbury

Study mode

Full-time

► Find out more

For up-to-date information about this course, including delivery modes, please visit our website.





MODULAR ACCELERATION PROGRAMME (MAP)

RCL is delighted to offer the Modular Acceleration Programme (MAP) from January and April 2025.

This fully funded opportunity will enable participants to build credits towards a Higher Technical Qualification (HTQ) free of charge. HTQs are practical and skills-based courses developed with employers, including Level 4 Higher National Certificates (HNC) and Level 5 Higher National Diplomas (HND).

You can choose from eight 30-credit HTQ modules spanning Engineering and Digital Technologies, designed to help you develop practical skills that directly enhance employability and further your career growth.

Who can apply?

This programme is open to anyone who is:

- aged between 19 and 60.
- a resident of England (further conditions may apply – please check eligibility when registering your interest).

MAP benefits

Free tuition

That's right – successful applicants will undertake exciting, career-focused HTQ modules completely free of charge.

Flexibility

The programme offers a flexible timetable that includes weekend classes with options for online or face-to-face learning, making it ideal for those with busy lifestyles.

Progression

The programme allows you to gain credits at your own pace and gives you the option of transferring into and completing a full HTQ, should you choose to do so.

Student support

All participants will receive access to RCL's robust student support ecosystem. Our dedicated team are on hand to provide impartial advice and improve your educational experience – from study skills to mental health and wellbeing.

What modules are available?

There are eight modules to choose from, spanning Engineering and Digital Technologies subjects from our HND programmes. These include:

- Innovative Website Design and Development
- Engineering Design Principles
- Engineering Projects and Systems
- Database Design and Networking

Each module is made up of two units. You must take both units to qualify for free tuition.

► Find out more

For more information about MAP, please visit our website.



Funded by
UK Government



FEES AND FUNDING



For home students

Tuition fees (by level of study)

Programme/Level of study

- Higher National Diplomas (HND)
-
- Foundation degrees (FdSc)
-
- Foundation year routes
-
- Bachelor's degrees
-
- Top-up degrees
-
- Master's degrees
-
- Master of Business Administration (MBA)
-

2024/2025 UK home student fee per academic year

- £9,250*
-
- £9,250
-
- £9,250
-
- £9,250
-
- £9,250
-
- £8,496
-
- £9,720 (MBA three-year part-time –
£3,240 per year)
-

*An additional one-off £323.95 Pearson registration fee also applies to students studying a HND programme. Subject to change 31st July 2024.

ENTRY REQUIREMENTS



In this section, you will find the entry requirements for RCL's range of qualifications.

Please note

- Proof of English (POE) is required for all applicants (exemptions may apply as per the admission policy).
- When providing your reference, we require a company email with email signature or letter headed paper from employer/other referee.
- Translations are not required for qualifications in Latin. Qualifications in any other language will require translation from a certified authority.
- If your British passport is expired, then a valid driving license, birth certificate, naturalisation certificate or BRP card is required.
- If your passport for any other nationality has expired, then we will require a valid national identity card.
- For full English language requirement information, please visit the RCL website. Entry to all Buckinghamshire New University courses will be subject to the University's specific English language requirements.

Foundation degrees

Standard	Non-standard
<ul style="list-style-type: none">• Application form via online portal• Valid proof of ID. If you are a non-UK citizen, please share code or residence card permit (back and front pages).• Five GCSEs (grade A-C/ 9-4 or equivalent) / One AS Level / One A Level / Level 3 Cert / Diploma (minimum 48 UCAS Points)• Personal statement (approx 450 words and relevant to the course applied)• Photo (passport size headshot only)• Proof of address (dated within the last three months)• Intention to Study Meeting (ISM) (if applicable)	<ul style="list-style-type: none">• Application form via online portal• Valid proof of ID. If you are a non-UK citizen, please share code or residence card permit (back and front pages).• Up-to-date CV detailing work experience• Current reference (dated in the last three months) and/or evidence of employment covering a minimum of two years (full-time or part-time).• Personal statement (approx 450 words and relevant to your chosen course)• Intention to Study Meeting (ISM)• Photo (passport size headshot only)• Proof of address (dated within the last three months)

Level 4/Higher National Diplomas

Standard	Non-standard
<ul style="list-style-type: none">• Application form via online portal• Valid proof of ID. If you are a non-UK citizen, please share code or residence card permit (back and front pages).• Two A-Levels / Level 3 90 credits diploma (minimum 104 UCAS points)• Personal statement (approx 450 words and relevant to your chosen course)• Photo (passport size headshot only)• Proof of address (dated within the last three months)• Intention to Study Meeting (ISM) (if applicable)	<ul style="list-style-type: none">• Application form via online portal• Valid proof of ID. If you are a non-UK citizen, share code or residence card permit (back and front pages).• Up-to-date CV detailing work experience or qualifications (minimum 48 UCAS points)• Current reference (dated in the last three months) and/or evidence of employment covering a minimum of two years (full-time or part-time)• Personal statement (approx 450 words and relevant to your chosen course)• Intention to Study Meeting (ISM)• Photo (passport size headshot only)• Proof of address (dated within the last three months)

Top-up degrees

Standard	Non-standard
<ul style="list-style-type: none">• Application form via online portal• Valid proof of ID. If you are a non-UK citizen, please share code or residence card permit (back and front pages).• Level 5 HND at 240 credits or equivalent (modules must map across)• Personal statement (approx 450 words and relevant to your chosen course)• Photo (passport size headshot only)• Proof of address (dated within the last three months)• Intention to Study Meeting (ISM) (if applicable)	<ul style="list-style-type: none">• Application form via online portal• Valid proof of ID. If you are a non-UK citizen, share code or residence card permit (back and front pages).• Up-to-date CV detailing work experience or qualifications (minimum 48 UCAS points)• Current reference (dated in the last three months) and/or evidence of employment covering a minimum of two years (full-time or part-time)• Personal statement (approx 450 words and relevant to your chosen course)• Intention to Study Meeting (ISM)• Photo (passport size headshot only)• Proof of address (dated within the last three months)

Master's degrees

Standard	Non-standard
<ul style="list-style-type: none">• Application form via online portal• Valid proof of ID. If you are a non-UK citizen, please share code or residence card permit (back and front pages).• UK honours degree/postgraduate degree (or equivalent) in a relevant subject• Personal statement (approx 450 words and relevant to your chosen course)• Photo (passport size headshot only)• Proof of address (dated within the last three months)• Intention to Study Meeting (ISM) (if applicable)• Proof of English Language Proficiency at IELTS 6.0 level, with no less than 5.5 in any band (or equivalent)	<ul style="list-style-type: none">• Application form via online portal• Valid proof of ID. If you are a non-UK citizen, please share code or residence card permit (back and front pages).• Up-to-date CV detailing work experience• Current reference (dated in the last three months) and/or evidence of employment covering a minimum of two years (full-time or part-time)• Personal statement (approx 450 words and relevant to your chosen course)• Intention to Study Meeting (ISM)• Photo (passport size headshot only)• Proof of address (dated within the last three months)• Proof of English Language Proficiency at IELTS 6.0 level, with no less than 5.5 in any band (or equivalent)

OUR ADMISSIONS PROCESS

Start your RCL journey in five steps...

Step 1: Register your interest

Once you have identified your desired course and registered your interest, your first point of contact will be one of our friendly and helpful Course Advisors.

The first step in our recruitment and admissions process will be attending an initial Information, Advice and Guidance (IAG) consultation with our Recruitment team. This online appointment typically takes 20-30 minutes.

Step 2: Make your application

All prospective students are required to fill out the online application form and submit relevant documents. There are two application routes: the standard entry (via academic achievement) and the non-standard entry (via relevant work experience).

Step 3: Provide English Language Requirement and/or attend ISM

If applicants do not have a qualification that demonstrates the required level of English proficiency, they will need to take our Click English test (CET).

In addition, a candidate may be required to attend an Intention to Study (ISM) meeting. The ISM typically lasts around 30 minutes and will assess the following criteria:

- Your academic and/or professional background
- Your understanding of and suitability for the course
- Your understanding of the subject area, related industry and relevant careers

Step 4: Receive offer letter

If all the outlined criteria are met, you will be issued a Conditional Offer/Offer in Principle letter. Your application will then be handed to our Enrolment team.

Partner offer process

If you apply for a programme offered by one of our partner universities, you will receive an Offer in Principle. The final decision will be made by the partner institution. Official offer letters are only issued after the following process:

- Where the prospective student has met all entry criteria, a file is created with the relevant documents.
- The folder is shared with the relevant team members from the partner institution. This is usually done on a weekly basis. The partner institution take up to five working days to process the files.
- Partner institutions send a list with the outcome of each application to RCL's Admissions Manager.
- If there are any outstanding conditions, the Admissions Manager will reassess the file and gather the missing documents as instructed by the university partner. The Admissions Manager will then resubmit the file.
- If there are no outstanding conditions, the applicant receives an unconditional offer letter from the university partner.

Step 5: Applying for Student Finance

Tip: You can apply for Student Finance at any stage of your application using your preferred course/provider choice details. In fact, the earlier you do this the better, as it can take up to six weeks for Student Finance England (SfE) to process your application.

The quickest and easiest way to apply for funding is by completing SfE's online application form. Depending on your circumstances, the application process should only take around 30 minutes to complete. Your Course Advisor or a member of RCL's Finance team can help you apply.

You will need the following documents to complete your application:

- A valid passport
- Your National Insurance (NI) number
- Bank account details (this account must be in your name). If you do not currently hold a bank account in your name, you will need to open one **before** you can apply for student funding. Most high street banks can help you with this process and many have special offers and accounts for students.

Please note: There is also a paper version of the SfE application form available. The version that you use – whether paper or online – is dependent on your circumstances and could require further evidence for your application to be approved.

COME TO AN OPEN DAY



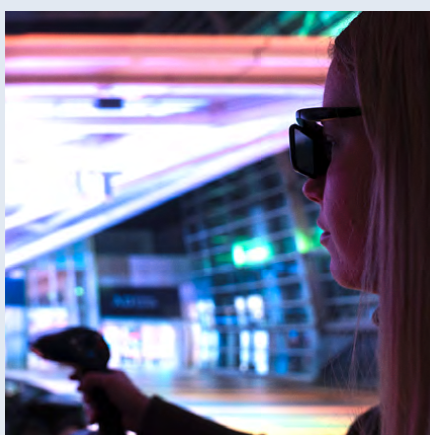
Meet us virtually

If you cannot meet us in-person, our virtual Open Days are an excellent way to experience RCL. Visit our website to book your place.



Meet us on campus

Unless you are considering a synchronous online learning option, the best way to experience RCL is by coming to one of our on-campus Open Days. This will allow you to explore our facilities up close and meet our academics, Student Support team and some of our current students.



We look forward to meeting you!



On-demand

You can watch our most recent virtual Open Day on-demand. Our content is available 24/7 to help you explore your course of interest, learn about the application process and hear from our course leaders and students. Visit our website to get started.



► Find out more
Visit our website



☎ +44 (0)20 3870 6666

✉ info@rcl.ac.uk

For more information about our degree programmes, visit [rcl.ac.uk](https://www.rcl.ac.uk)

Holborn

2-10 Princeton St
London, WC1R 4BH

Fitzrovia

Regent Hill House
153 Great Titchfield Street
London, W1W 5BD

Wembley

Madison House
24-28 London Road
Wembley, HA9 7EX

Kingsbury

Masons House
1-3 Valley Drive
London, NW9 9NG

Southall

Regent College London
39-47 High Street
Southall, UB1 3HF

Follow us

