



FOCAL POINT

Fine Art Gallery

www.KyleWhaleyPhotoArt.com

January 1, 2025



Kyle Whaley

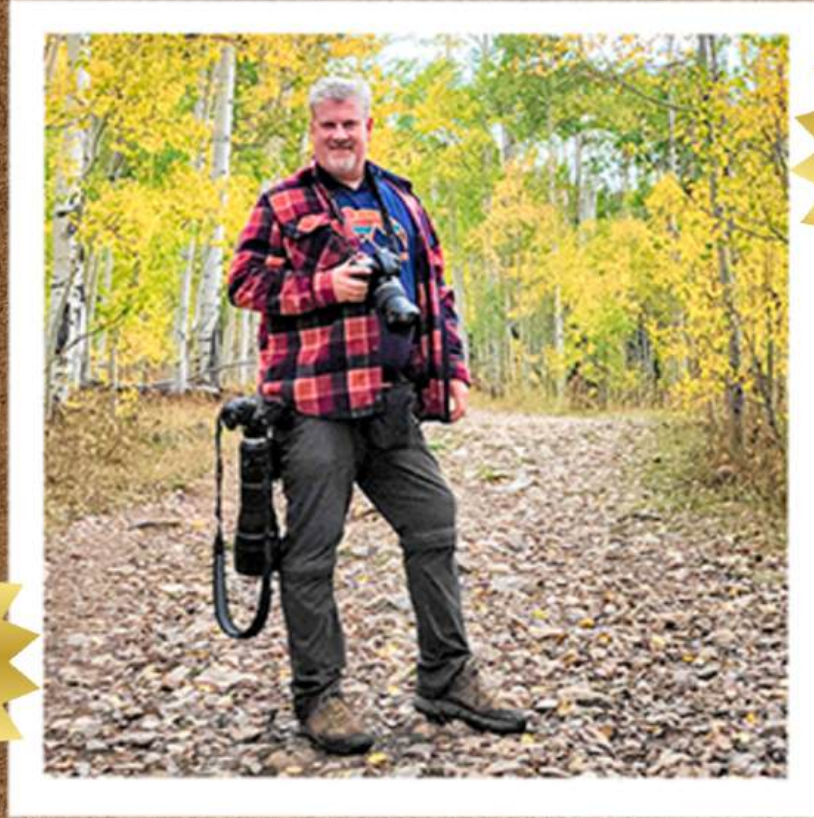
GALLERY CATALOG

Kyle presents a captivating collection of photography prints that capture extraordinary moments from around the world. Each piece is not just visually striking but also sparks conversation and adds character to any space. Dive into Kyle's portfolio and discover the perfect piece to ignite your creativity. With his unique style and storytelling ability, Kyle's art stirs emotions and makes rooms captivating.



Kyle Whaley

www.KyleWhaleyPhotoArt.com



AMBASSADOR
CLUB DISCOUNT
10% OFF
Details on last
pages of
catalog

Please
follow Kyle on
**Instagram or
FaceBook**
Details on last
page!

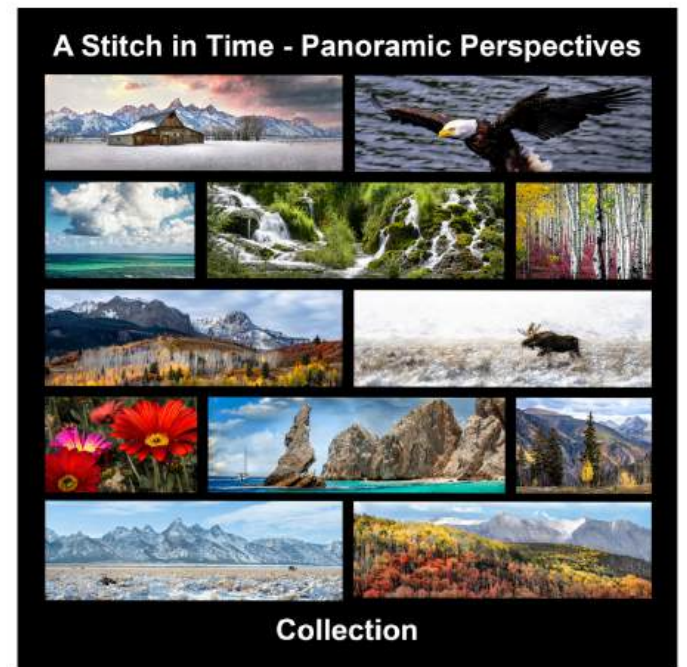
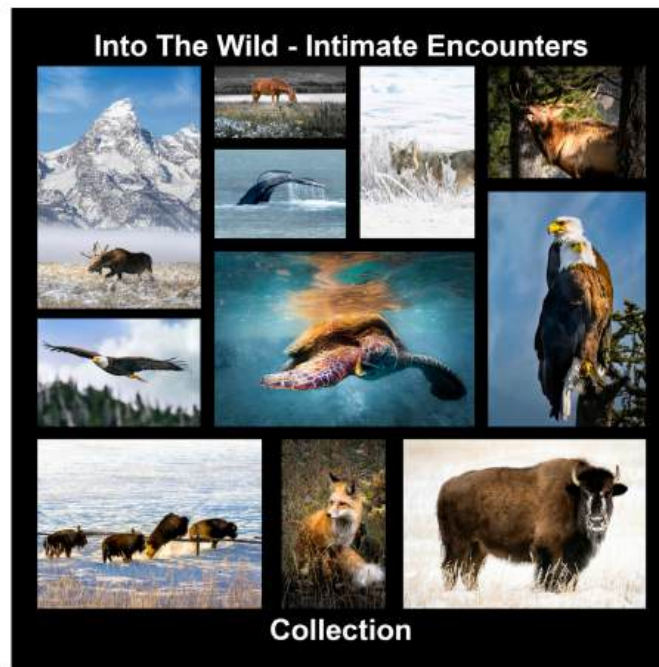
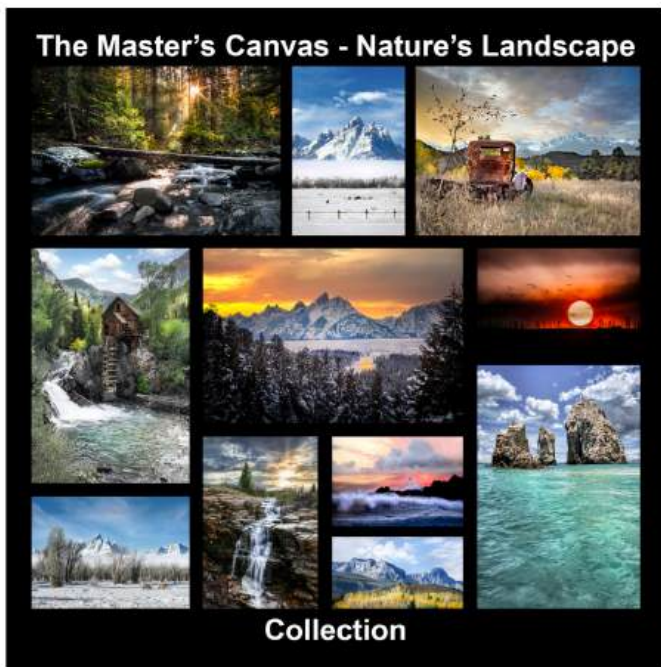
About the Artist

Kyle Whaley is more than just a fine art photographer; he's a visual storyteller, capturing the breathtaking landscapes and wildlife with unparalleled artistry. Based in the heart of the Colorado with his wife Vicki and their two adult children... Kyle's passion for the outdoors infuses every frame he captures. Specializing in museum-quality photo-art, his work is a testament to the awe-inspiring beauty of nature and the delicate balance of life within it. Through his lens, Kyle seeks to share the wonder and magic of God's creation, inviting others to experience the fleeting beauty that unfolds with each click of the shutter.

Ways we give back...

When you purchase from this artist, a portion of all proceeds are donated to help the following 501(c)3 non-profit organizations who are making a difference. For more information [click here](#)





ABOUT THE COLLECTIONS

There are 3 Collections launched in 2024:

1) THE MASTER'S CANVAS - NATURE'S LANDSCAPE

2) INTO THE WILD - INTIMATE ENCOUNTERS

3) A STITCH IN TIME - PANORAMIC PERSPECTIVES

In these **Limited Edition** offerings, each collection is roughly 40 images, that is over 120 images! We are in the works to introduce new collections in the first quarter of 2025, stay tuned.

Most of the images are available in 5 different sizes, which we have made simple by referring to them as Small, Medium, Large, XL, and XXL. Each size has a limited quantity run, thus being a **Limited Edition Print**, they are as follows:

- Small: 100 Editions
- Medium: 50 Editions
- Large: 40 Editions
- XL: 30 Editions
- XXL: 20 Editions

Each Limited Edition comes with a **Certificate of Authenticity**, will have a description of your artwork, the edition number, a unique traceable number with a hologram seal.





ABOUT THE ART

THE QUALITY & THE SUSTAINABILITY PROMISE

Our Printing Process:

- We have **hand selected** various print partners from around the globe. These are niche printers who are the very best at their craft, each one focusing on what they do best (i.e. Canvas, Acrylic, etc.).
- We use only the **finest printing materials**. As well as innovative & precise printing solutions to produce masterpieces that will stand the test of time and conditions, delivering years of viewing joy.
- Our print partners are dedicated to a **fine craftsmanship** experience, **innovation** and an **innate sense of perfection** to produce works of art that inspire our customers to say "wow" each and every time our prints are unwrapped and hung on their walls!
- **Print One. Plant One.** - For every print ordered through our site, a tree is planted by **Trees for the Future** (a non-profit entity). With the help from our friends at **Trees for the Future**, these donations will plant trees with rural communities in the developing world, enabling them to restore their environment, grow more food, and build a more sustainable future. *We have a link to a video of their work on our website so you can learn more.*
- **100% quality satisfaction 30 day guarantee***. We want to give you confidence when ordering from us, by offering you a 30 day quality satisfaction guarantee! If you are not happy with the quality of the product you purchased, and this is due to factors under our control, we will replace your artwork guaranteed.
- **In-House Technical Review for each order.** Our professional in-house designers review all orders to ensure each order for our clients are printed to perfection.
- ***FREE Shipping (regardless of size) on any order that is over \$75 within the contiguous United States (lower 48) and Canada!**
- We do ship internationally with a limited menu, for an added cost.



*Details, terms & conditions are available on our website

DISPLAY OPTIONS GUIDE

FOR LIMITED EDITIONS & ARTIST PROOFS

1) Fine Art Matte Paper

- Our Premium Archival Matte Paper is a smooth, neutral-white, matte paper for high-quality fine art, photo reproduction, and open-edition décor. The paper supports accurate color reproduction and high-contrast, high-resolution output, and is acid-free for a longer print life with pigment inks. It features a heavy weight (230 gsm), thick base (9.5 mil), and an instant-dry coating that resists fingerprints and smudging. Most prints will come with a white border around the artwork (from 1.75" to 2.5" depending on the size of the print). Image to right shows the artwork with optional framing.



2) Museum Quality Stretched Giclee Canvas

- Our canvas is designed to meet art galleries' and museum's longevity requirements and ensure consistency of shades for up to 200 years old. The printing process is Giclee with Pigment Ink on a Premium Fine Art Matte Canvas 410g/m2. Each canvas is finished with a Matte varnish which provides a 'Fine Art' look and provides a great color gammut.

Black edged sides, felt bumper pads to protect your walls, & wire ready to hang! Canvas prints also look amazing in float frames, it takes the look to a whole new level (this option is also available)!



3) ChromaLuxe HD Metal Prints

- The combination of unmatched color brilliance, superior durability and true generational archival qualities makes ChromaLuxe the perfect choice for image reproduction and the ideal choice for professional photo printing. Vibrant & rich colors, scratch resistant, lightweight, weather-proof, easy installation, & easy to clean. Metal prints are usually displayed with a back float mount (meaning they appear to float off the wall), but another option is to frame them with decorative moulding which is available.



4) Signature HD Acrylic Prints

- Premium polished, best-in-class, 99.9% optically pure acrylic, luminous colors and fascinating depth. This High Definition print option is the top of the line, there is nothing better if you are wanting quality.

We use the latest flatbed printing machines and craftsmanship. The combination of HD super-vivid printing, professional-quality materials, and the depth (1/8 inch acrylic)...creates an astonishing effect. This will get complements and be a focal point in whatever room you choose to hang your art! The image to the right shows the option of polished aluminum stand offs instead of the normal back float mounting.



“What you put on your wall matters. Art speaks to the soul & inspires!” - Kyle Whaley

DISPLAY OPTIONS GUIDE

FOR LIMITED EDITIONS & ARTIST PROOFS

Limited Editions & Artist Proofs can be purchased with or without custom framing options. Here's more information on options.

Examples of HD Metal Frameless



Back frame mount



Examples of Float Frames!

Floating Frame box



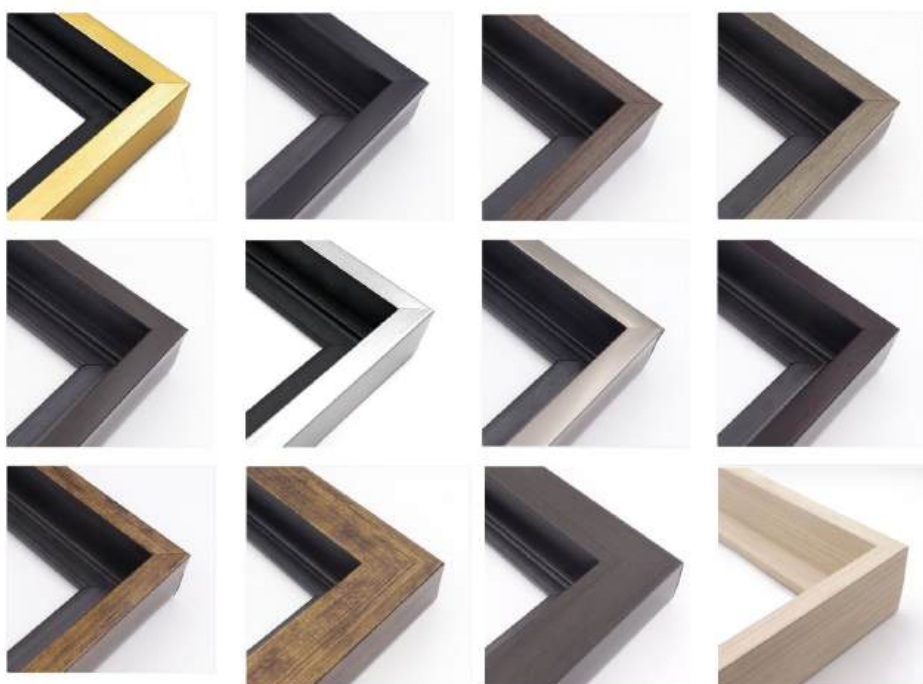
Example of Fine Art Print Framing



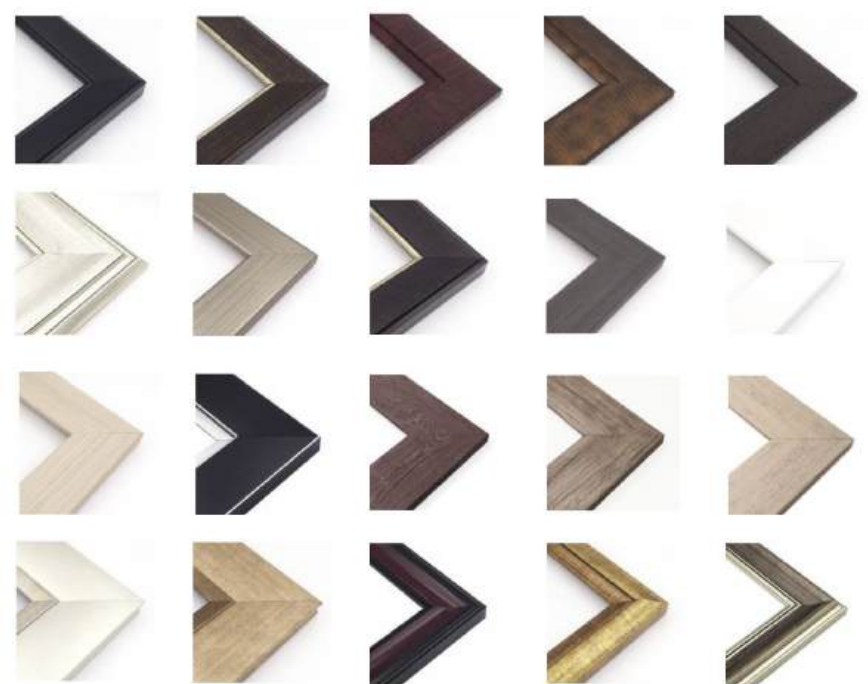
Example of Decorative Moulding Framing



Float Frame Options



Decorative Moulding Frame Options





SIZING GUIDE

These collections will be offered in five different sizes: **S, M, L, XL & XXL.**

Two of our Collections use a 2:3 ratio for our prints, which is the most common picture dimensions. However, the Panoramic Collection uses 2 different ratios you need to be aware of. The first is called **Super Panoramic** which is a 1:3 ratio (meaning it is 3 times wider than high). The second is called **Ultra Panoramic** which is a 1:4.5 ratio (meaning it is 4.5 times wider than high), we currently only have 4 images that are Ultra Panoramic (so check with our website for these).

Also remember that if you are ordering a Fine Art Paper Print, these often come with a white border of 1.75" or 2.5", depending on the size chosen. This white border is "in addition" to the image size shown in the following examples.

SMALL - EDITIONS OF 100

Perfect for your computer desk, office space, countertop, nook area or even a bathroom.

Small Image Size: 8" x 12"

Super Pano Small Image Size: 8" x 24"



SIZING GUIDE

MEDIUM - EDITIONS OF 50

A great size to put in a collection of 2 or 3 images in a hallway, living room or bedroom to have a cohesive space.

Medium Image Size: 12" x 18"

Super Pano Medium Image Size: 10" x 30"



LARGE - EDITIONS OF 40

A great size to put above a bed or small sofa. This size is big enough to get noticed in these kind of areas, but won't overwhelm the space.

Large Image Size: 24" x 36"



Super Pano Large Image Size: 15" x 45"





EXTRA LARGE - EDITIONS OF 30

A great size to put over a king sized bed or large couch.

Extra Large Image Size: 40" x 60"



Super Pano XL Image Size: 20" x 60"



XXL - EDITIONS OF 20

These are big, and fill the space very well. This size commands attention and the detail of the artwork is so amazing at this size. Just make sure you measure before pulling the trigger.

XXL Image Size: 50" x 75"



Super Pano XXL Image Size: 30" x 90"



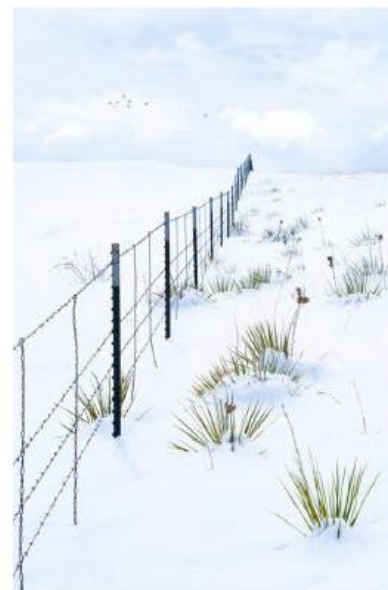
COLLECTION #1

THE MASTER'S CANVAS - NATURE'S LANDSCAPE



COLLECTION #1

THE MASTER'S CANVAS - NATURE'S LANDSCAPE



To learn more about any of these images; like its title, the story behind the image, etc... just go to www.KyleWhaleyPhotoArt.com

COLLECTION #1

THE MASTER'S CANVAS - NATURE'S LANDSCAPE



NEW IMAGE



NEW IMAGE



NEW IMAGE



NEW IMAGE



Let your walls speak!

COLLECTION #1

THE MASTER'S CANVAS - NATURE'S LANDSCAPE

Join the adventure*: Follow our "[Ambassador Club](#)" to get a lifetime discount code for 10% off all purchases, plus various special offers throughout the year.

*More details on the benefits of becoming an Ambassador Club follower on last pages of catalog, and you can JOIN by visiting our website.



Kyle Whaley

www.KyleWhaleyPhotoArt.com

COLLECTION #2

INTO THE WILD - INTIMATE ENCOUNTERS



COLLECTION #2

INTO THE WILD - INTIMATE ENCOUNTERS



COLLECTION #2

INTO THE WILD - INTIMATE ENCOUNTERS



NEW IMAGE



NEW IMAGE

Animals are a window to your soul and a doorway to your spiritual destiny.
- Kim Shotola

COLLECTION #2

INTO THE WILD - INTIMATE ENCOUNTERS

Join the adventure*: Follow our "[Ambassador Club](#)" to get a lifetime discount code for 10% off all purchases, plus various special offers throughout the year.

*More details on the benefits of becoming an Ambassador Club follower on last pages of catalog, and you can JOIN by visiting our website.



Kyle Whaley

www.KyleWhaleyPhotoArt.com

COLLECTION #3

A STITCH IN TIME - PANORAMIC PERSPECTIVES



THE ABOVE IMAGE IS A SUPER PANORAMIC (1:4.5 RATIO)



THE ABOVE IMAGE IS A SUPER PANORAMIC (1:4.5 RATIO)

COLLECTION #3

A STITCH IN TIME - PANORAMIC PERSPECTIVES



THE ABOVE IMAGE IS A SUPER PANORAMIC (1:4.5 RATIO)

THE ABOVE IMAGE IS A SUPER PANORAMIC (1:4.5 RATIO)

COLLECTION #3

A STITCH IN TIME - PANORAMIC PERSPECTIVES



To learn more about any of these images; like its title, the story behind the image, etc... just go to www.KyleWhaleyPhotoArt.com

COLLECTION #3

A STITCH IN TIME - PANORAMIC PERSPECTIVES



NEW
IMAGE



NEW
IMAGE



NEW
IMAGE



NEW
IMAGE

To learn more about any of these images; like its title, the story behind the image, etc... just go to www.KyleWhaleyPhotoArt.com

Panorama fine art prints command the room with its wide format, it somehow draws the viewer into the frame.

COLLECTION #3

A STITCH IN TIME - PANORAMIC PERSPECTIVES

Join the adventure*: Follow our "Ambassador Club" to get a lifetime discount code for 10% off all purchases, plus various special offers throughout the year.

*More details on the benefits of becoming an Ambassador Club follower on last pages of catalog, and you can JOIN by visiting our website.



Kyle Whaley

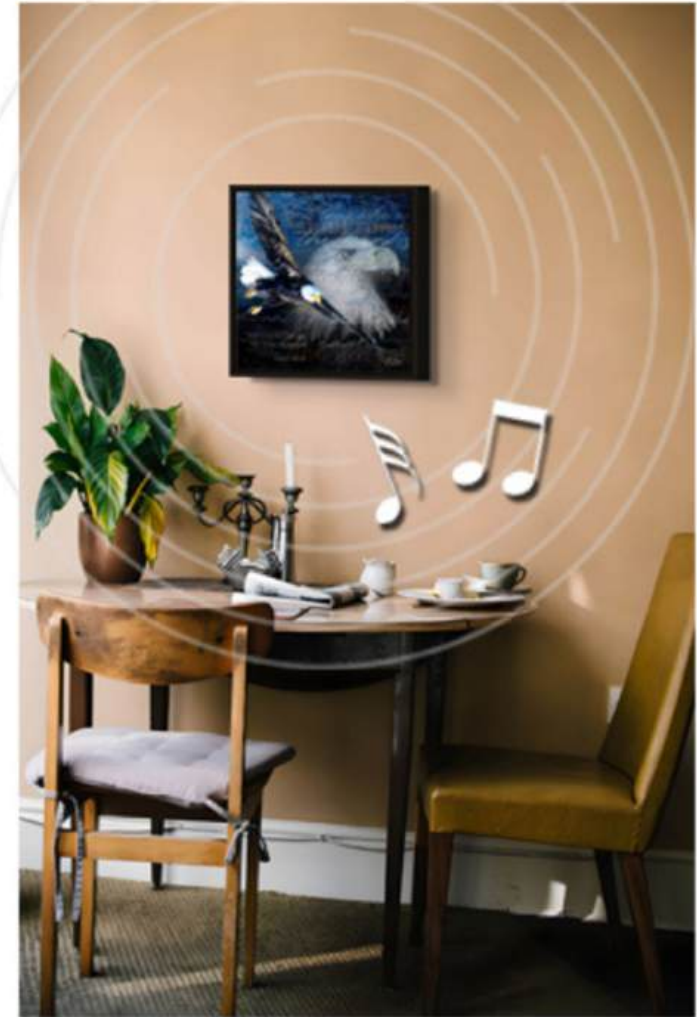
www.KyleWhaleyPhotoArt.com

What's in the Pipeline?

HERE ARE A FEW THINGS WE ARE WORKING ON

1) Wall Art Speakers... Powerful Bluetooth Sound Built Into Our Artwork!

- Dual Purpose: Beautiful canvas artwork on your walls! Then hidden behind the canvas is a powerful Bluetooth surround sound speaker filling the room with your favorite music! No more ugly speakers! This sleek and compact Bluetooth speaker also has a rechargeable lithium battery that provides over 20 hours of use per charge and a built-in USB slot for playing music or messages without any wires.
- Wireless Bluetooth Streaming - Connect your Computer, Laptop, Phone, or Tablet.
- Over 20 hours of Continuous Play - Built-in Battery, USB Cable Included. MP3 Compatible.
- Powerful Dual 45mm Drivers with 45mm x 90mm Passive Speakers / Radiator for Deeper Sound. Easy to Reach Buttons with Audio Prompts
- Mounts Easy with Embed Sawtooth Hanger or place it on a flat surface. Black Wood Frame with Mitered Corners. Inputs - Auxiliary, Blue tooth, USB
- Frame Dimension- 14.5in x 14.5in x 1.5in.
- **Coming Early 2025... we have already started production!**



*Bluetooth speaker built into our
Canvas Wall Art*

A picture is worth a thousand words. A speaker can play a million. Create your audio-visual experience today.

Such a unique artful combination, get yours today!
www.KyleWhaleyPhotoArt.com



2) "Refresh" Wall Art System - Never Get Bored Again!

- With the "Refresh" Wall Art System, you can swap the artwork for your latest favorite in no time at all. On the same patented tension frame. This way you will never get bored of your wall art again! You buy one frame, then either 2 or 4 prints to swap out using the same frame. Available in "**2 Print package**" or "**4 Print package**" options.
 - **REUSABLE** - Only swap the print.
 - **LIGHTWEIGHT** - Light as a feather.
 - **TIGHT & FLAT** - Patented tensioning system.
 - **DROPSHADOW** - Make your artwork float off the wall.
 - **MULTIPLE SIZING OPTIONS** - Small or big, you're covered.

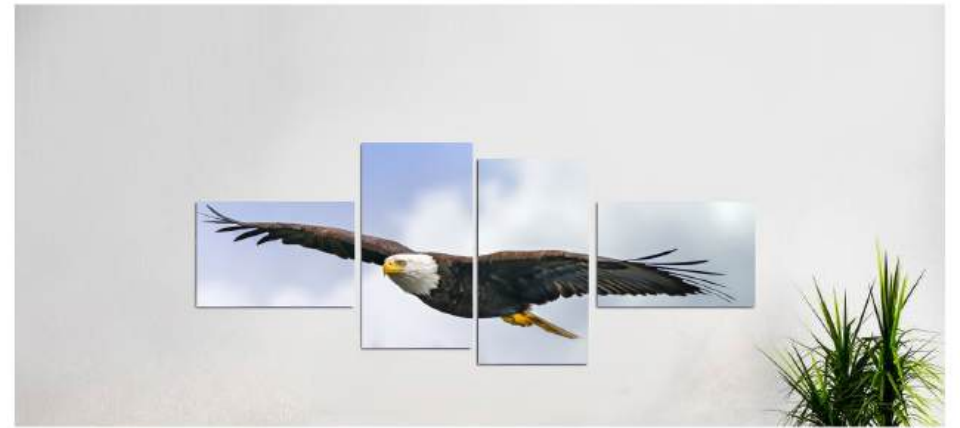
"Refresh" will be available in early 2025. We have already started selling these at live events and it's extremely popular!

What's in the Pipeline?

HERE ARE A FEW THINGS WE ARE WORKING ON

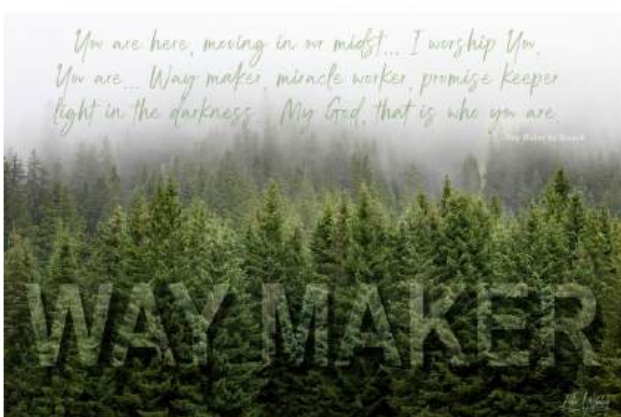
3) Art Installations: Multi-Panel Wall Art Splits

- Art Installations are the latest craze in the art market. The concept is to take a single image or multiple images and divide it onto multiple canvases, incorporating the negative space between the canvases as part of the design. Sometimes called Polyptychs, Wall Clusters or Wall Splits. We have locked down our printer on these, we just need to add them to our website gallery.
- **Arriving Spring 2025** (but if you want sooner... contact us).



4) A New Series: called "Focused Faith"

- Expanding our Phot-Fusion collections, a new series called "Focused Faith" is in production as we speak. We launched the idea at some live events in 2024, using a smaller test product... refrigerator magnets!
- They were one of our best selling items and we got great feedback from our fans... they loved the concept, so we developed it into larger artwork... beyond magnets.
- **So what is the concept:** We take our artwork and infuse the scriptures or worship lyrics directly into the art. Sometimes the lyrics are so tiny you need a magnifying glass to read them, other areas of the art it may be more obvious. I have one image where the entire book of Philippians is infused into the artwork!
- For Christ followers, I think the slogan "What you put of your wall matters" is taken to a whole new level of meaning with this series. The artwork not only is beautiful but also a conversation starter, and a great daily reminder of what is truly important and where our focus should be.
- Some of this series will also be available on the "Wall Art Speakers" offering you read about in section 1. In fact if you look closely at the picture of the **Eagle Soaring** on the previous page in section 1... that is **Isaiah 40:31**. Pretty cool!
- **Arriving Spring 2025.** Here are some of the magnets we did to give you an idea.



What's in the Pipeline?

HERE ARE A FEW THINGS WE ARE WORKING ON

5) We are diversifying our offerings!

- In 2024, Kyle started to do some live events (never done before) at various art shows, craft shows, etc. We learned a lot. We got great feedback from our fans and collectors. We had good success. We also realized that we needed some lower price point items that fit the venue, without sacrificing quality or value. Not everyone is in the market for a 20x60 metal print (even though it will change your life!), so I wanted to appeal to a broader audience. Since we would be offering these items at our live events, why not also offer them through our website and social channels too. Right? Some of the new items will be...



EXAMPLES OF STONE SLATE



- Stone Slate table top artwork
- Polar Fleece Blankets that are 60x80" and super soft
- Acrylic Block double sided table top frames
- Magnets (4x6") - Focused Faith Series
- Premium Drink Coasters
- MixPix (8x8" image) with magnetic black frames
- Small 2x2x1" Acrylic blocks



- Arriving Spring/Summer 2025 to the website

These are just a few things we are working on, but we have more up our sleeve and can't wait to share!

- We will also be introducing other **Limited Edition Series collections** in early 2025, including a collection of **Infrared Fine Art Photography**. We will explain more about what Infrared Photography is later, but an example is located on the previous page; the photo of the Roman Aqueducts with the pink looking tree... that photo was taken on Kyle's infrared camera!

Make sure to join our **Ambassador Club** (see next 2 pages) to hear when these launch, and to receive special discounts!

If you don't join the **Ambassador Club**, then you miss out!

By subscribing to our **Ambassador Club**, you will get:

PEER
PRESSURE:
EVERYONE
IS DOING IT!

- It's **FREE** to join with no obligation to buy anything, you are just agreeing to follow Kyle on his journey and get updates, get discounts and get some freebies along the way!
- **Immediate download access** to our latest catalogs.
- **First to know** previews of new releases!
- Ambassador Club only **VIP DISCOUNT offers**. **You will get a lifetime* discount code of 10% off any purchase, anytime.** You will also get periodic special offers and discounts throughout the year. If you want to pay full price and be the last to know, don't join the club!

*These discount codes are sent via email to you, so make sure you have "white-listed" our email support@KyleWhaleyPhotoArt.com to make sure they don't go into your spam folder. *Lifetime means as long as you are subscribed to the Ambassador Club email list... if you unsubscribe, your discount won't work.*

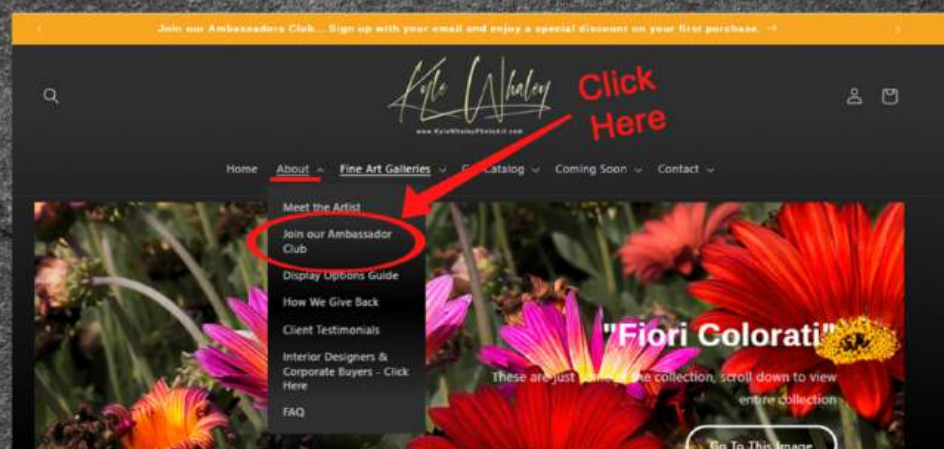
- Special **Advanced Sales Events** - be the first to purchase limited editions prints before they are offered to the public. Why is that important? Lower edition numbers are more valuable in the collection!
- Ambassador Club members get **Free Shipping** on any orders over \$75.
- Along with our occasional email we will send to keep you informed on Kyle's latest art, we will sometimes include some **freebies** (like a "screen saver" download that you can use on your computer monitor).

Note: Following Kyle on his social media feeds (i.e.: Instagram, FaceBook) does not automatically enroll you into the Ambassador Club, you must opt-in to these emails to get these benefits.

How do you join the Ambassador Club?

To subscribe and JOIN our **Ambassador Club**, do the following:

- This only takes 1 to 2 minutes
- Go to our website from your computer or smartphone.
 - www.KyleWhaleyPhotoArt.com
- Once on the website, look for the drop down "About" menu and click on **Join our Ambassador Club**.



- Scroll to the bottom and fill-in the **"Subscribe"** section. Click submit. Then watch for your first email from us in the next few minutes, which will include our latest catalog. That's it, you are now part of the club!

Note: we communicate using your email that you provide and occasionally we might send a SMS notification to your cell, by subscribing you are opting-in to this kind of communication. We never sell your information. If at any point you wish to remove yourself from our communications and our club benefits, just click unsubscribe (but you won't want to!). You only need to subscribe once, but if you accidentally clicked the unsubscribe link, you can always join again.

Other ways you can follow Kyle:

Please follow Kyle on your **Instagram** account and your **FaceBook** feed and if you like what we are posting, please Like & SHARE.



Instagram

[kyle.whaley.photoart](https://www.instagram.com/kyle.whaley.photoart)



facebook

[Kylewhaleyphotoart](https://www.facebook.com/Kylewhaleyphotoart)

A stylized, handwritten signature of Kyle Whaley in gold ink.