

Middlesbrough College Group:

# Building a Greener Future Together



# Contents

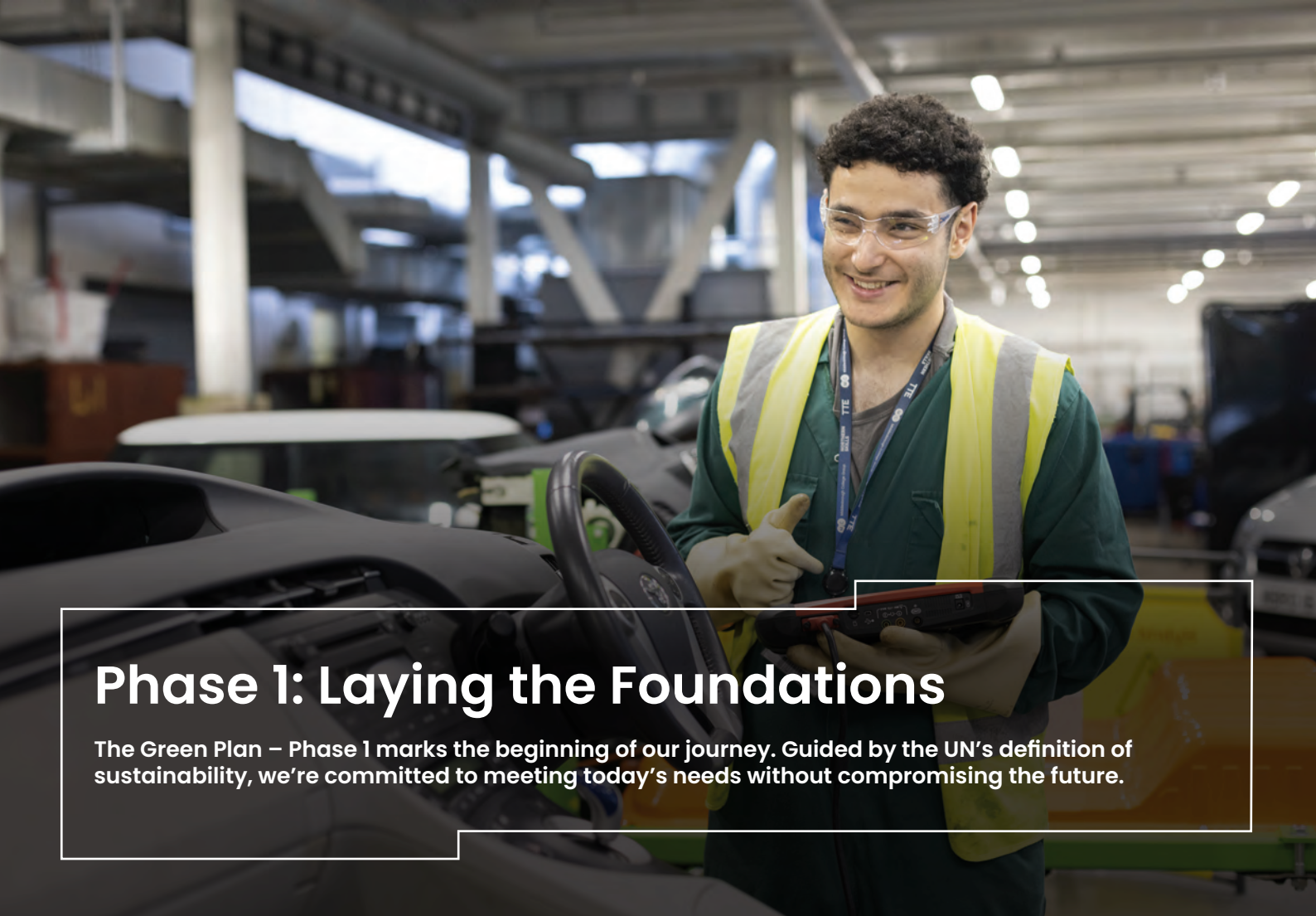
<b>Introduction: Building a Greener Future Together.....</b>	<b>3</b>
<b>Phase 1: Laying the Foundations.....</b>	<b>4</b>
› Strategic Goals	
› Focus Areas	
› Key Initiatives	
› Education for a Greener Future	
<b>Phase 2: From Established to Leading.....</b>	<b>5</b>
› Vision and Focus Areas	
› Progress and 2026 Targets	
<b>SECR Annual Reporting.....</b>	<b>6</b>
› Key Achievements	
› Energy Consumption & Emissions Breakdown	
› Sector Comparison	
<b>Year-on-Year Sustainability Progress.....</b>	<b>7</b>
› Emissions & Energy Data	
› Carbon Intensity Metrics	
<b>Leadership &amp; Governance.....</b>	<b>8</b>
› Policy Integration	
› Energy Management with Schneider Electric	
› Climate Awareness Training	
<b>Teaching, Learning &amp; Research.....</b>	<b>9</b>
› AoC Sustainability Conference Insights	
› Staff Sustainability Survey	
› Curriculum Integration	
› Departmental Highlights	
<b>Green Skills &amp; Vocational Training.....</b>	<b>16</b>
› Wind Turbine Technician Training	
› Retrofit & Solar Thermal Courses	
› Electric & Hybrid Vehicle Training	
<b>Estates &amp; Operations.....</b>	<b>17</b>
› Salix PSDS Funding & Infrastructure Projects	
› Waste & Emissions Baseline	
› Biodiversity Initiatives	
› Energy, Water & Transport Efficiency	
<b>Partnerships &amp; Engagement.....</b>	<b>20</b>
› External Collaborations	
› Marketing & Digital Awareness	
› Green Team Activities	
› JB Recycling Visit	

# Our Commitment to Sustainability

At Middlesbrough College Group (MCG), we're proud to be taking bold steps toward a more sustainable future.

Through our multi-phase Green Plan, we're working to become a sector leader in environmental responsibility by 2030 and a net zero carbon college by 2050.





## Phase 1: Laying the Foundations

The Green Plan – Phase 1 marks the beginning of our journey. Guided by the UN’s definition of sustainability, we’re committed to meeting today’s needs without compromising the future.

### Our Strategic Goals

- › Achieve **“Emerging”** sustainability status by December 2023
- › Reach **“Established”** status by 2026
- › Become a **“Leading”** sustainable college by 2030
- › Commit to net zero carbon emissions by 2050

### Our Focus Areas

We’re aligning with the Climate Action Roadmap for FE Colleges, focusing on:

- › Leadership & Governance
- › Teaching, Learning & Research
- › Estates & Operations
- › Partnerships & Engagement

### Key Initiatives

- › Energy & Carbon: Upgrading to LED lighting, improving heating systems, and exploring on-site renewable energy.
- › Waste Management: Introducing food waste bins, boosting recycling, and running awareness campaigns.

- › Travel & Transport: Encouraging greener commuting and reducing Scope 3 emissions.
- › Biodiversity & Green Spaces: Enhancing gardens and outdoor areas for learning and wellbeing.
- › IT & Infrastructure: Choosing greener tech and moving toward paperless systems.
- › Food Services: Reducing the environmental impact of food production and waste.

### Working Together

We’re collaborating with suppliers, contractors, employers, and local authorities to embed sustainability into everything we do – from procurement to everyday behaviours.

### Education for a Greener Future

Sustainability is being woven into our curriculum, empowering students with the knowledge and skills to lead the green transition.



# Phase 2: From Established to Leading

The Green Plan – Phase 2 builds on our progress and sets the course for becoming a national leader in sustainability by 2030.

## Our Vision

To become a net zero carbon college by 2050, with clear interim targets and a whole-college approach to sustainability.

## Key Focus Areas

### 1. Leadership & Governance

- › Strengthening sustainability leadership at all levels
- › Publishing annual carbon reports
- › Embedding sustainability into policies and strategic plans

### 2. Teaching, Learning & Research

- › Delivering carbon awareness training for staff and students
- › Integrating sustainability across all curriculum areas
- › Expanding green skills qualifications in partnership with employers

### 3. Estates & Operations

- › Reducing carbon emissions by 5% each year
- › Auditing and decarbonising our buildings
- › Managing Scope 1, 2, and 3 emissions
- › Enhancing biodiversity and cutting waste by 10% annually

### 4. Partnerships & Engagement

- › Signing the Global Climate Letter and SDG Accord
- › Hosting annual Green Days and awareness campaigns
- › Collaborating with local councils, suppliers, and community groups
- › Transitioning to 100% renewable energy contracts

## Our Progress So Far

- › Carbon footprint baseline established
- › Green energy procurement in place
- › Sustainability embedded in governance and curriculum planning

## By 2026, we aim to:

- › Be recognised as an Established Sustainable College
- › Publish clear interim decarbonisation targets
- › Engage the entire college community in our Green Plan
- › Launch a new sustainability-aligned curriculum strategy

## Why It Matters

Climate change is already affecting our region. At MCG, we're committed to protecting the environment, supporting our community, and preparing our students for a greener, more sustainable future.





# SECR Annual Reporting

## Middlesbrough College: Leading the Way in Sustainability

### Our Commitment to a Greener Future

Middlesbrough College continues to demonstrate leadership in environmental responsibility through its annual Streamlined Energy and Carbon Reporting (SECR). This report highlights our energy usage, carbon emissions, and progress toward net zero for the academic year ending August 31, 2025.

### Key Achievements

- › **Total Gross Emissions Reduced by 23%**  
From 1,637.57 tCO<sub>2</sub>e in 2023/24 to 1258.65 tCO<sub>2</sub>e in 2023/24
- › **Zero Carbon Electricity Tariff**  
We are proud to be backed by zero carbon electricity generated from nuclear power, showing our genuine commitment to net zero
- › **Carbon Intensity Per Staff Member Down 48%**  
Emissions per full-time staff member dropped from 2.08 tCO<sub>2</sub>e to 1.07tCO<sub>2</sub>e, outperforming many peer institutions

### Energy Consumption Overview

- › **Total Energy Used:** 8,234,774 kWh
- › **Gas:** 2,905,000 kWh
- › **Electricity:** 3,930,958 kWh
- › **Transport Fuel:** 20,205.16 kWh

### Carbon Emissions Breakdown

- › **Scope 1 (Direct Emissions):** 531.50 tCO<sub>2</sub>e
- › **Scope 2 (Indirect from Electricity):** 0 tCO<sub>2</sub>e (due to zero carbon tariff)
- › **Scope 3 (Business Travel):** 31.64 tCO<sub>2</sub>e

### Performance vs. Sector

Compared to other colleges:

- › **Middlesbrough College:** 1.07 tCO<sub>2</sub>e per staff
- › **Sector average:** 1.36–2.76 tCO<sub>2</sub>e per staff

### Looking Ahead

We continue to invest in renewable energy, efficient infrastructure, and sustainable transport. Our SECR data not only meets government standards but reflects our strategic commitment to environmental stewardship.

# Sustainability Progress: Year-on-Year Comparison

## Carbon Emissions: Significant Reduction

Category	2023–2024	2024–2025	Change
Total Emissions (tCO <sub>2</sub> e)	1647.447	1258.644	▼ -23.6%
Scope 1 (Direct) (tCO <sub>2</sub> e)	730.41	563.33	▼ -29.65%
Scope 2 (Electricity Usage kWh)	4,284,931	3,930,958	▼ -8.26%

\*Scope 2 emissions dropped to zero due to Middlesbrough College's adoption of a Zero Carbon Electricity Tariff, powered by nuclear energy.

## Energy Consumption

Source	2023–2024	2024–2025	Change
Total Energy (kWh)	8,121,429	6,835,958	▼ -15.82%
Gas	3,836,498	2,905,000	▼ -24.3%
Electricity	4,284,931	3,930,958	▼ -8.26%
Transport Fleet Mileage reimbursed from staff claims	107,440	113,483	▲ +5.62%

## Carbon Intensity

Metric	2023–2024	2024–2025	Change
tCO <sub>2</sub> e per Staff (FTE)	1.48	1.08	▼ -27.03%
tCO <sub>2</sub> e per Student	0.139	0.106	▼ -27.74%
tCO <sub>2</sub> e per £100,000 Turnover	2.52	1.99	▼ -21.03%

## Key Highlights

- ▶ **Zero Carbon Electricity:** A major milestone achieved in 2023–24, eliminating Scope 2 emissions
- ▶ **Transport Emissions:** Increased due to higher fleet usage but offset by reductions elsewhere
- ▶ **Efficiency Gains:** Despite a slight rise in energy use, overall emissions dropped significantly
- ▶ **Sector Leadership:** Middlesbrough College now ranks among the lowest for carbon intensity per staff member compared to peer institutions

# Leadership and Governance

## Embedding Sustainability into Policy and Practice

To truly embed sustainability across Middlesbrough College, we're reviewing and refreshing our existing policies – both within Business Support and the curriculum. This important work ensures that environmental principles are not just aspirations but are actively shaping how we operate and educate.

By aligning our policies with our sustainability goals, we can:

- › Strengthen our environmental responsibility
- › Reduce our carbon footprint
- › Equip students with the skills and mindset for a greener future

Our Sustainability lead is working closely with departments to lead this transformation – ensuring sustainability is at the heart of both our operations and our academic delivery.

## Smarter Energy Management for a Sustainable Future

Middlesbrough College is working in partnership with Schneider Electric SE to transform how we manage energy across our campus. Through advanced Building Management Systems (BMS) and the newly installed EcoStruxure Sustainability Pack, we're building the tools and expertise to drive real carbon reduction.

### Our Three-Stage Action Plan

- 1. Unlocking Data**  
Expanding access to detailed energy usage data across the college
- 2. Empowering Staff**  
Training teams to use and develop the BMS for smarter decision-making
- 3. Driving Insight**  
Using advanced data visualisation – including Sankey diagrams – to identify inefficiencies and take fast, targeted action

Sankey diagrams are powerful visual tools that show how energy flows and changes over time, helping us pinpoint areas of waste and opportunity.

## Empowering Staff Through Climate Awareness Training

As part of our commitment to sustainability, Middlesbrough College is developing a new Climate Awareness CPD programme to engage staff in understanding their own environmental impact – starting with calculating their personal carbon footprint.

This initiative is designed to spark meaningful conversations around sustainability and support our journey to net zero.

### Rollout Plan: 2025–2026

- › Developed by Sustainability leads
- › Delivered via: CPD Days and the Thrive learning platform
- › In collaboration with: Digital Innovation and Curriculum Leads

Staff and students will have access to a range of engaging content across multiple platforms, making sustainability learning more accessible than ever.

We're also working with Local External businesses to explore new training topics that will be phased into Thrive throughout the academic year – ensuring our learning offer stays fresh, relevant, and impactful.





# Teaching, Learning and Research

## Learning from the Sector: AoC Sustainability & Green Skills Conference 2025

In March 2025, Middlesbrough College took part in the Association of Colleges (AoC) Sustainability and Green Skills Online Conference, reinforcing our commitment to staying at the forefront of environmental education and action.

### Key Themes Explored

- › The UK Government's sustainability strategy for education
- › Embedding green skills into the curriculum
- › Strengthening employer engagement in green industries

### Practical Insights Gained

Our Staff participated in focused breakout sessions on:

- › **Sustainable Procurement:** Exploring responsible purchasing practices that reduce environmental impact
- › **Capital & Estates Funding:** Learning strategies to make college infrastructure more sustainable and secure funding for eco-friendly developments

These sessions provided valuable, actionable ideas for our procurement and estates teams, helping us embed sustainability deeper into our operations and decision-making.

### Why It Matters

Participation in national conferences like this ensures Middlesbrough College remains a leader

in sustainability – continuously learning, adapting, and driving forward impactful change for our students, staff, and community.

## Sustainability Survey

### Staff Voices: Embedding Sustainability Across the Curriculum

As part of our roadmap to embed sustainability into every aspect of college life, Middlesbrough College launched a staff survey to understand how sustainability is already being delivered across the curriculum – and where we can go further.

### What We Learned

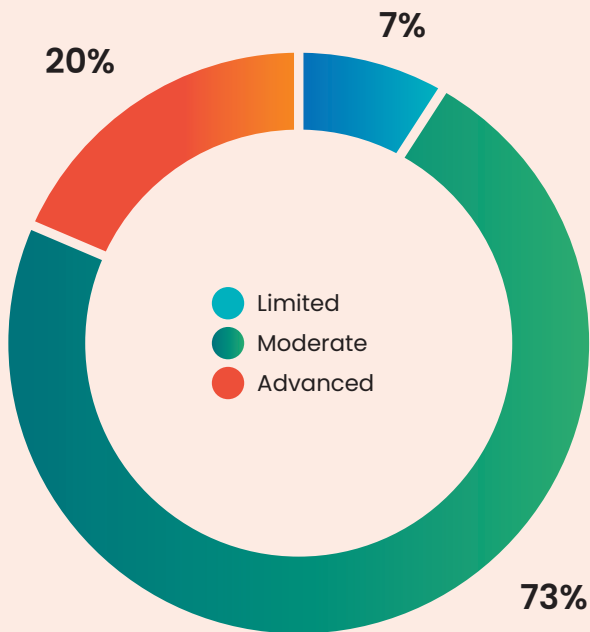
Staff shared a wide range of creative and meaningful ways they're already integrating sustainability into teaching:

- › **English:** Using climate change texts for comprehension
- › **Thrive:** Exploring ethics and sustainability topics
- › **Digital Practices:** Reducing paper use and reusing electronic components
- › **Vocational Courses:** Teaching design life cycles, food choices, and industry sustainability practices
- › **Qualifications:** Courses like AAT and Facilities Management include dedicated sustainability units
- › **Real-World Examples:** From zero-waste kitchens to NHS net-zero goals, staff are helping students connect sustainability to real careers and industries

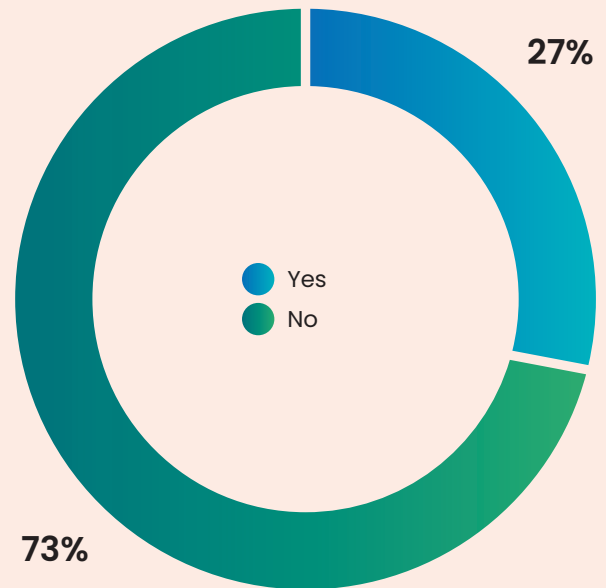
## What Staff Need

The survey also highlighted opportunities to strengthen our approach:

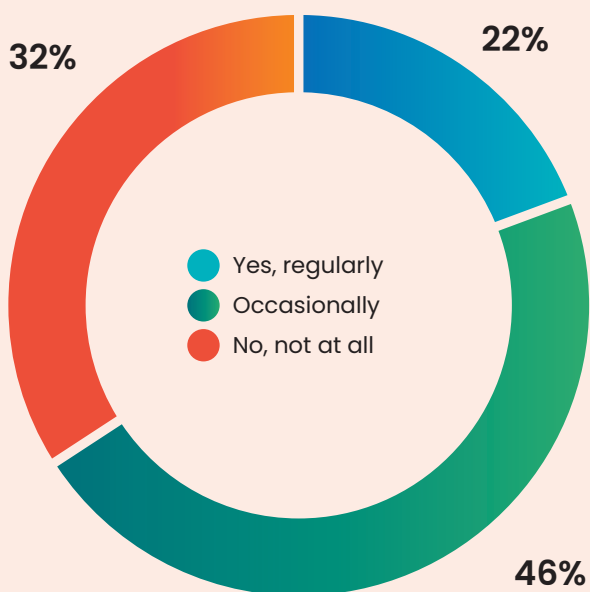
- › **More training and CPD** to help staff confidently embed sustainability in their subject areas
- › **Improved student education** on recycling and waste disposal
- › **Better facilities**, including more recycling bins and energy-efficient systems
- › **Transport incentives**, such as EV schemes and charging points
- › **Clearer communication** about existing initiatives like rewilding projects
- › **Leadership engagement**, with sustainability as a regular agenda item



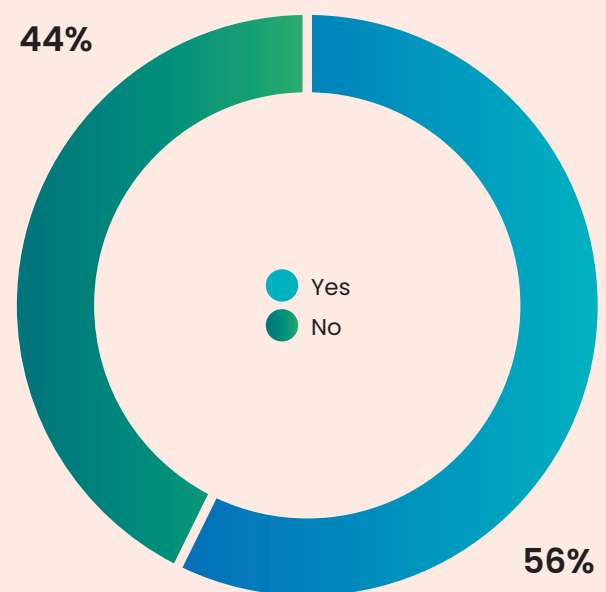
How would you rate your current understanding of climate change and sustainability?



Are you aware of the college mission or goals to achieving new zero emission?



Do you currently incorporate sustainability principles or topics related to climate change into your teaching?



Would you be interested in Carbon Awareness Training?

## Student-Led Sustainability Resources for Teaching

As part of our ongoing commitment to embed sustainability into the curriculum, Middlesbrough College is expanding its Thrive Tutorial Package with new, student-created content.

Following a suggestion from the Green Team, plans are in place for first and second-year Environmental Science students to develop sustainability and environmental awareness training materials during the 2025–2026 academic year. These resources will be added to the Thrive platform, giving teaching staff more tools to integrate sustainability into their lessons.

### What This Means:

- › Students gain real-world experience by creating meaningful content aligned with their course
- › Teachers benefit from a growing bank of high-quality, relevant sustainability resources
- › Sustainability becomes more visible and accessible across all subject areas

Currently, most staff use two core sustainability tutorials with students. As more resources are developed and added, sustainability will become a more prominent and practical part of everyday teaching.

## Embedding Sustainability into the Curriculum

Middlesbrough College is committed to ensuring that sustainability is not just a theme — but a core part of how we teach, learn, and prepare students for the future.

### Collaborative Approach

While curriculum content decisions sit with the Deputy Principal, the Teaching and Learning team plays a vital supporting role in shaping how sustainability is delivered in practice. Together, we're identifying existing initiatives and aligning them with our strategic goals.

### Guided by Professional Standards

All teaching staff operate under a national framework of Professional Standards, which guide their responsibilities and practice. These are grouped into three key domains:

- › Professional Values and Attributes
- › Professional Knowledge and Understanding
- › Professional Skills

### Professional Values and Attributes:

1. Critically reflect on and evaluate your practices, values and beliefs to improve learner outcomes
2. Promote and embed education for sustainable development (ESD) across learning and working practices
3. Inspire, motivate, and raise aspirations of learners by communicating high expectations and a passion for learning
4. Support and develop learners' confidence, autonomy and thinking skills, taking account of their needs and starting points
5. Value and champion diversity, equality of opportunity, inclusion and social equity
6. Develop collaborative and respectful relationships with learners, colleagues and external stakeholders
7. Engage with and promote a culture of continuous learning and quality improvement

Of relevance is Standard 2, which calls on educators to:

*"Promote and embed education for sustainable development (ESD) across learning and working practices."*

This standard reinforces the importance of integrating sustainability into both teaching methods and the wider learning environment.



## Embedding Sustainability Across Departments

Ongoing conversations with personnel across the College have revealed exciting progress in embedding sustainability into teaching and learning.

Many departments are actively exploring how to integrate environmental themes into their curricula, with new courses in development that align with the growing demand for green skills.

**These efforts reflect Middlesbrough College's wider commitment to:**

- › Environmental responsibility
- › Future-focused education
- › Preparing students for careers in a low-carbon economy

By working collaboratively across departments, we're ensuring that sustainability is not just an add-on — but a core part of how we educate and inspire the next generation.



## Construction Department: Learning from Global Leaders in Sustainability

As part of our commitment to delivering cutting-edge, sustainability-focused education, the Construction Department recently undertook an international visit to Ireland to explore best practices in sustainable construction training.

Led by the Assistant Director of Construction, the team engaged with a specialist consultant focused on aligning training with the EU's Net Zero 2030 targets. The visit included tours of four leading training centres, each equipped with advanced rigs and facilities designed to deliver hands-on, sustainability-driven learning.

### Key Areas of Focus:

- › Retrofit techniques for energy-efficient buildings
- › Commercial building design with sustainability in mind
- › Eco-conscious practices in public sector construction
- › Environmentally responsible design and planning
- › Sustainable housing solutions
- › Net-Zero Champion training to prepare future leaders in green construction





## Bringing Innovation Home

The visit provided valuable insights and inspiration for enhancing our own training environments — particularly in Plumbing and Retrofit. Plans are now underway to introduce:

- › New equipment and layout models
- › Updated course content
- › Practical training aligned with the latest sustainable building practices

These developments are part of a broader strategy to ensure Middlesbrough College remains at the forefront of green education, equipping students with the skills and knowledge needed to thrive in a low-carbon economy.

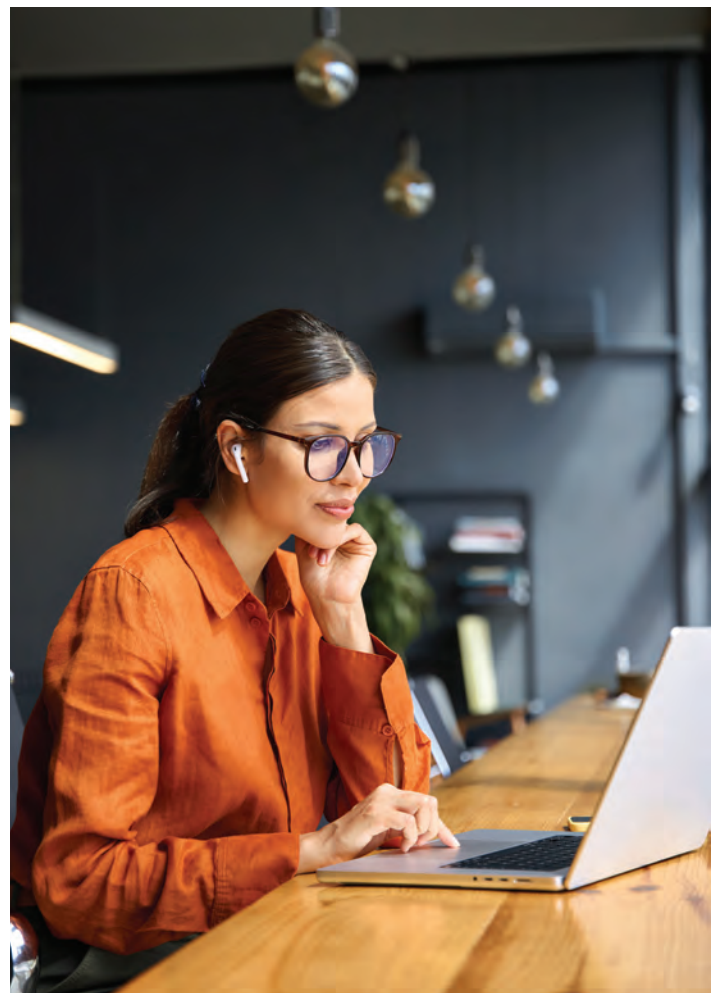
## Expanding Learning Opportunities

- › Plans are underway to broaden the range of Thrive training resources available to teaching staff, making it easier to integrate sustainability into everyday lessons.
- › New content will support staff in delivering engaging, relevant sustainability education across all subject areas.

## Sparking Curiosity with 'Question of the Week'

To raise awareness and encourage everyday engagement, sustainability topics will be introduced into the college's 'Question of the Week' platform, prompting reflection, discussion, and action among students and staff alike.

These initiatives are part of our wider strategy to make sustainability a visible, accessible, and inspiring part of the college experience.



## SIRS in Action: Sustainability Across Curriculum Areas

### Catering: Serving Sustainability

The Curriculum Catering team is leading by example with a strong focus on reducing environmental impact while maintaining exceptional service standards.

- › **Local Sourcing:** Ingredients are sourced locally to ensure freshness and support regional suppliers.
- › **Food Waste Reduction:** Careful planning and full use of ingredients help minimise waste.
- › **Energy Efficiency:** Kitchens implement energy-saving practices, such as switching off fans and lights during downtime.
- › **Waste Management:** Food waste is collected in designated red bags, and glass bottles are recycled – with ongoing work to improve transparency in disposal processes.



### Hair & Beauty: Sustainable Style

Sustainability is woven into the Hair & Beauty curriculum, giving students hands-on experience with eco-conscious practices.

- › **Refillable Products:** Use of refillable dyes reduces single-use plastic waste.
- › **Industry Training:** Students receive L'Oréal sustainability training, earning certifications that enhance their professional credentials.
- › **Smart Resource Use:** The department is exploring digital tools and precision scales to personalise services, reduce waste, and improve efficiency.

### Business & Professional Studies: Teaching Responsible Enterprise

The Business curriculum integrates sustainability and UK ESG (Environmental, Social, and Governance) principles, preparing students to lead in a responsible, future-focused economy.



- › **Real-World Case Studies:** Students explore ethical fashion, green utilities, and fair-trade retail.
- › **Practical Projects:** Activities include town planning with an environmental lens and exploring zero-waste shopping models.
- › **Digital Transformation:** The department has moved to fully digital delivery — reducing paper use and enhancing accessibility through Microsoft Teams and online assessments.

## Childcare & Education: Nurturing Environmental Awareness from the Start

Sustainability is embedded in both theory and practice across the Childcare & Education curriculum.

### Understanding the World (Early Years Framework)

Children explore nature through outdoor learning, recycling projects, and lessons on seasonal changes and plant growth.

### Sustainable Practice in Nurseries

Use of eco-friendly nappies and cleaning products reinforces responsible choices in early years care. Digital Delivery:

All teaching content is hosted on Microsoft Teams, supporting a paperless, streamlined learning environment.

### › Mental Health & Wellbeing

Students explore environmental wellness and create personalised wellness plans as part of their assessments.

### › Health Promotion & Nutrition

Learner's design campaigns promoting healthy lifestyles to reduce pressure on the NHS.

### › Research & Technology

Topics include lung health, vaping, and sustainable healthcare technologies — linking innovation with environmental impact.

## T Level Health: Supporting a Greener NHS

The T Level Health programme aligns with national sustainability goals, including the Greener NHS strategy:

- › Reducing clinical waste and improving segregation
- › Promoting digital patient records to cut paper use
- › Encouraging active travel for health and environmental benefits

Digital-first delivery via Microsoft Teams enhances engagement while reducing environmental impact.



## T Level Digital: Building Sustainable Tech Professionals

The T Level in Digital integrates sustainability into every aspect of the curriculum:

### › Environmental Impact Awareness

Students assess the footprint of digital technologies and explore energy-efficient computing, sustainable sourcing, and green software practices.

### › Inclusive & Accessible Design

Learners apply Web Content Accessibility Guidelines (WCAG) and design with empathy to promote digital equity.

### › Efficient Methodologies

Agile, lean, and cloud-based approaches reduce waste and energy use.

### › Disaster Resilience

Students study digital continuity, cybersecurity, and infrastructure resilience in the face of environmental and societal challenges.

### › Regulatory Compliance

Curriculum includes WEEE Directive, CSR reporting, and global e-waste standards.

# Green Skills for a Low-Carbon Economy

Middlesbrough College is proud to offer Green Skills courses that prepare students for careers in sustainable industries:

## Global Wind Organisation (GWO) – Performing Engineering Operations

This internationally recognised course equips learners with the skills to work as Wind Turbine Technicians in the renewable energy sector.

### Training includes:

- › Mechanical and electrical assembly
- › Wiring and testing systems
- › GWO-certified modules in Hydraulics, Mechanical, and Electrical systems

## Retrofit Training

With a growing demand for retrofit professionals, the college offers:

- › Level 3 NVQ Diploma in Domestic Plumbing and Heating – Solar Thermal

Focused on installing and maintaining solar water heating systems, this course supports the UK's transition to energy-efficient homes.

## Driving the Future: Electric & Hybrid Vehicle Training

As the automotive industry shifts toward cleaner, low-emission technologies, Middlesbrough College is equipping learners with the skills needed to thrive in this evolving sector.

### Courses Offered:

- › **IMI Level 3 Award in Electric/Hybrid Vehicle System Repair and Replacement**  
A foundational qualification for those entering the electric/hybrid vehicle maintenance field.

### › **Electric Vehicle Maintenance Skills Bootcamps – Levels 2 & 3**

Designed for experienced technicians, these bootcamps offer hands-on training in servicing and maintaining electric vehicles.

These Green Skills courses align with national sustainability goals and provide learners with the opportunity to contribute to a greener future while entering a high-demand industry.

## Curriculum Survey: Insights That Shaped Our Strategy

A recent staff survey revealed that sustainability is already being embedded across more curriculum areas than expected.

### Key takeaways included:

- › Digital CPD platforms were identified as the most effective way to support staff in delivering sustainability content.
- › These insights directly informed the development of new initiatives and training programmes planned for 2025–2026, including expanded Thrive resources and curriculum-aligned sustainability content.





# Estates & Operations: Powering a Greener Campus

## £4.9M Secured Through Salix PSDS

In April 2025, Middlesbrough College was awarded £4.9 million through the Public Sector Decarbonisation Scheme (PSDS) — a major step forward in our journey to net zero. This funding supports a £6 million project to transform our campus infrastructure with low-carbon heating and energy efficiency upgrades.

### Project Scope (2025–2029)

The project is being delivered in phases over three years, with design work starting in 2025 and installation beginning in 2026.

#### Key upgrades include:

- › Replacing boilers in the Main Building and STEM Centre with Air Source Heat Pumps (ASHP)
- › Upgrading outdated ASHP systems in MC6
- › Installing 550kWp of solar PV across rooftops and car parks to offset 70% of the additional electricity demand from ASHPs

*Projected savings: £105,000 per year from January 2029, with a 95% reduction in gas usage and a 30% increase in electricity offset by solar PV.*

### Current Low-Carbon Infrastructure

Before the Salix project, the College had already made significant progress:

- › ASHPs installed in MC6, Construction, and TTE buildings
- › Solar PV panels on STEM, MC6, and TTE rooftops
- › Solar thermal systems providing renewable hot water in MC6 and STEM

## Establishing a Waste & Emissions Baseline

To tackle Scope 3 emissions — those outside our direct control, such as travel, waste, and procurement — the College is developing a robust baseline.

#### This involves:

- › Identifying key emission sources (e.g. staff/student travel, waste, supply chain)
- › Implementing clear data collection methods
- › Engaging staff, students, and suppliers in the process

Setting this baseline will allow us to track progress, target reductions, and drive collective action across the College community.



# Biodiversity on Campus: Growing a Greener Future

## Training for Impact

As part of our biodiversity strategy, Middlesbrough Environment City returned to the College to deliver a hands-on training session for our Gardening Club. The session focused on the importance of biodiversity — the rich variety of life on Earth — and its role in supporting healthy ecosystems, clean air and water, food security, and climate regulation.

A key highlight was soil biodiversity, which plays a vital role in plant health and nutrient cycling but is often overlooked. Students learned how to protect biodiversity through sustainable gardening practices such as:

- › Organic gardening
- › Minimal soil disturbance
- › Supporting native plants
- › Creating habitats for pollinators and soil organisms

## Trees on Tees: Planting for the Future

In partnership with the Trees on Tees initiative, Middlesbrough College has planted two mini forests across campus, featuring 300 young trees and plants. These fast-growing woodlands are supported with canes and rabbit guards to ensure healthy growth.

As the College expands, these Tiny Forests offer a unique opportunity to:

- › Mitigate climate change
- › Create habitats for wildlife
- › Enhance wellbeing and ecological awareness among students and staff

Funding has been secured to maintain these trees for three years, with expert guidance ensuring their successful establishment.

- › Tree care and maintenance
- › Environmental training sessions
- › On-campus biodiversity projects

Trees on Tees will also provide free training, equipping Staff & Students with the practical skills to inspect and care for the trees — fostering a deeper connection to nature and a sense of environmental responsibility.



## Estates Sustainability Initiatives: Creating a Greener Campus

As part of Middlesbrough College's commitment to sustainability and carbon reduction, the Estates team has implemented a wide-ranging programme of energy-saving, water conservation, and operational efficiency measures. These initiatives are transforming our buildings into more environmentally responsible spaces for learning and working.

### Renewable Energy Technologies

- › Air Source Heat Pumps (ASHP) installed in MC6, Construction, and TTE buildings reduce reliance on fossil fuels by using ambient air for heating.
- › Solar PV Panels on STEM, MC6, and TTE rooftops generate clean electricity, cutting carbon emissions and reducing demand on the national grid.
- › Solar Thermal Systems in MC6 and STEM provide renewable hot water, lowering gas consumption.

### Water Conservation Measures

- › **STEM Centre:** Switched from storage tanks to mains water, improving efficiency and reducing stagnation risks.
- › **Rainwater Harvesting:**
  - › STEM: Used for toilet flushing.
  - › TTE: Supports curriculum-specific equipment.
- › **Weekly Leak Checks:** Rapid response to dripping taps and leaks.
- › **Bathroom Refurbishments:** Upgraded to water-efficient fixtures.
- › **Digital Building:** Optimised water storage levels.
- › **Auto Flush Valves:** Installed across campus to reduce unnecessary water use.

### Energy Efficiency & Climate Control

- › **Temperature Settings:** Buildings heated to 19°C in winter and cooled to 23°C in summer to reduce energy use in the "dead band."
- › **LED Lighting Rollout:** Lower energy consumption and maintenance costs.
- › **Salix-Funded ASHP Upgrades:** Replacing aging boilers with modern, efficient systems.
  - › Schneider BMS Sustainability Package:
    - › Real-time energy monitoring
    - › Targeted action to reduce consumption
    - › BMS upgrades at MC6 improving HVAC efficiency
    - › Tighter scheduling of Air Handling Units (AHUs)
    - › New alerts for out-of-hours boiler activity
- › **Building Closures During Breaks:** Reducing baseline energy and water use.

### Sustainable Transport

- › EV Charging Stations installed across campus support the shift to electric vehicles for staff, students, and visitors – helping reduce transport-related emissions.

These initiatives reflect our strategic commitment to sustainability, ensuring Middlesbrough College operates as a responsible, future-focused institution.





# Partnerships & Engagement: Working Together for a Greener Future

Middlesbrough College is strengthening its sustainability efforts through meaningful partnerships, cross-departmental collaboration, and increased student and staff engagement.

## Strengthening External Partnerships

We've deepened our ties with key organisations such as J&B Recycling, Middlesbrough Environment City, and the Northeast Rotary Club, aligning our efforts with regional sustainability goals and community development initiatives.

- › Heritage walks and other community-led projects are already underway, with more planned in collaboration with Tees Community Forest and Middlesbrough Council.
- › These partnerships offer students valuable opportunities for experiential learning, civic engagement, and green skills development.

## Marketing & Digital Engagement

- › Head of Marketing joined the Green Team after visiting J&B Recycling and is now actively promoting sustainability through staff and student newsletters.
- › Digital campaigns and screen-based messaging are being used to raise awareness across campus.
- › Feedback from the Student Environmental Officer highlighted the need for better visibility – prompting a coordinated effort with departments, WFD, and Marketing to showcase sustainability initiatives more widely.

## HSES SharePoint & Thrive Integration

- › A dedicated Sustainability Hub has been launched on the HSES SharePoint, featuring department updates and resources.
- › New Thrive content is being developed to explain the AoC Climate Action Roadmap, helping all staff understand the College's journey to net zero.

## Green Team

The Green Team made meaningful progress in advancing sustainability across the College. Staff from Marketing, Teaching & Learning, Enrichment, and Finance collaborated to deliver impactful initiatives that support our climate goals.

### Key Achievements:

- › **Leadership Transition:** New team members stepped into leadership roles, ensuring continuity and fresh momentum following a previous departure.
- › **Sustainability Report Delivery:** A comprehensive report was presented, showcasing energy efficiency improvements and identifying opportunities for further action.
- › **Climate Action Training:** Delivered to staff and met with enthusiasm, sparking practical ideas for reducing both personal and institutional carbon footprints.
- › **Curriculum Integration:** Plans were set in motion to embed Climate Action Training into the Thrive programme, with Environmental Science students supporting delivery.
- › **Student Engagement:** Enrichment activities helped students connect with departmental sustainability efforts and drive change from within.

The Green Team continues to champion cross-college collaboration, with broader representation and renewed focus planned for future terms.

## J&B Recycling Visit: Learning from Industry

On 27th March 2025, Green Team members visited the J&B Recycling plant in Hartlepool to gain insights into waste stream management and explore ways to improve recycling on campus.

### Key takeaways included:

- › Understanding the challenges of waste sorting and sustainable packaging
- › Identifying opportunities to improve bin placement and vape disposal
- › Plans to involve more staff and students in future visits to promote awareness and sustainable behaviours



Top right: J&B Recycling visit  
Left and bottom right: training at Middlesbrough Environment City



Middlesbrough College  
Dock Street  
Middlesbrough  
TS2 1AD

Tel: 01642 333333  
[mbro.ac.uk](http://mbro.ac.uk)

**NORTHERN  
SKILLS**

  
Middlesbrough  
College Group

**TTE**