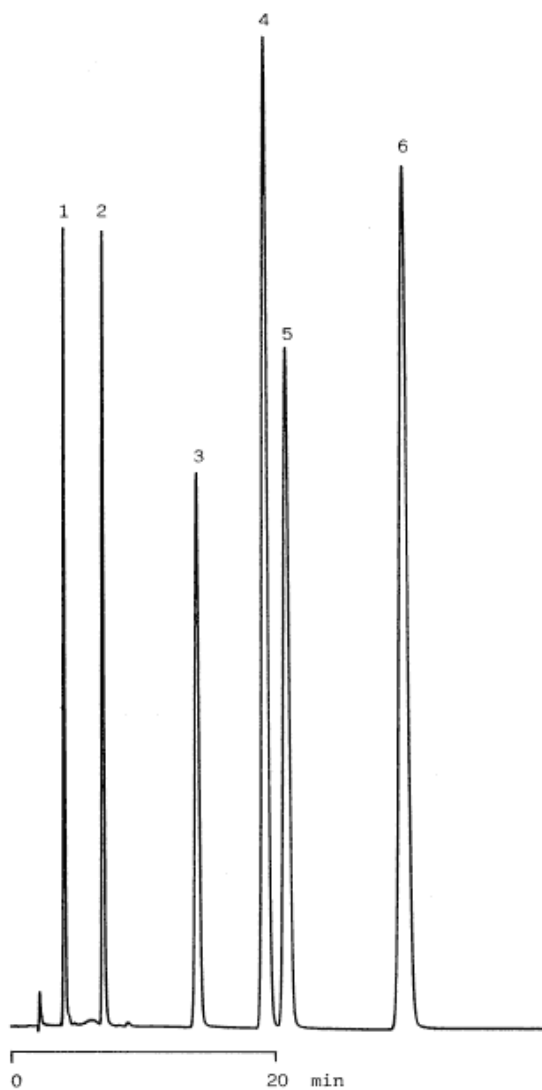


13. Synthetic antibacterials

Data No. LA068-0000



Column : Inertsil C4
5 μ m
150 \times 4.6 mm I.D.

Column Cat. No. : 5020-01401

Eluent : CH₃CN/0.1 % H₃PO₄ = 15/85

Flow rate : 1.0 mL/min.

Col. Temp. : 40°C

Detection : UV 284 nm

Injection Vol. :

Sample : Synthetic Antibacterials

Solutes : 1. Sulfamerazine (40 μ g/mL)
2. Furazolidone (80 μ g/mL)
3. Oxolinic acid (70 μ g/mL)
4. Sulfadimethoxine (70 μ g/mL)
5. Sulfaquinoxaline (90 μ g/mL)
6. Nalidixic acid (290 μ g/mL)