



MARISWE

IMPROVING LIVES
ENGINEERING SOLUTIONS

Company Profile

Transportation \ Water & Sanitation \ Structures \ Infrastructure Planning

Mariswe (Pty) Ltd is a South African-based infrastructure advisory company providing tailored infrastructure services to clients. Over 50 years we have been delivering **civil engineering consulting services** in areas of water and sanitation, structures and transportation while also providing infrastructure planning, project management and diversified services.

With a strong track record of successful project delivery, we have a proud tradition of excellence in providing engineering solutions with integrity across the African continent.

Our people are

- Specialists, revolutionising the way we deliver infrastructure;
- Solutionists, who have the power to get the job done;
- Synergists, engineering improvements;
- Starters, breaking new boundaries; and
- Seekers who understand a need to continually expand our knowledge.

Quality and innovation are the drivers of our company. We rigorously monitor, evaluate and continually improve our performance and effectiveness to produce optimum innovative results for our clients.

Our pledge is to focus on improving people's lives in everything we do.

mariswe – verb (colloq.) Improving lives through engineering solutions.



CONTENTS

02	INTRODUCTION
03	AN EMPOWERED SOUTH AFRICAN COMPANY
03	PROFESSIONAL AFFILIATIONS
04	MANAGEMENT & DIVISIONS
05	OFFICES – SOUTH AFRICA & THE AFRICAN CONTINENT
	Roots in Africa
06	ASSURED OF QUALITY
06	PROFESSIONAL INDEMNITY ASSURANCE
06	ETHICALLY DRIVEN
07	STAFF DEVELOPMENT
	Leadership Development
	Professional Registration
	Young Professionals
08	A RESPONSIBLE CORPORATE CITIZEN
	Socio-economic Development
	Nurture A Girl
	Supplier Development
	Bursary Programme
10	CAPABILITIES
	Transportation
	Water Services
	Structures
	Project Management
	Infrastructure Planning
15	NICHE AND SECTOR SPECIFIC SERVICES
	Integrated Construction Unit (iCU) System
	Agriculture
	Information and Communications Technology (ICT)
	Mining Infrastructure

Mariswe (Pty) Ltd snapshot 2024

OPERATIONS

50+ years experience



People employed at Mariswe (approximately):

145



10

Number of active offices in South Africa.

Mariswe operates subsidiary firms in Ghana and Tanzania and has a branch office in Lesotho.

The company has completed, or is working on, projects in Botswana, Burkina Faso, Democratic Republic of Congo, eSwatini, Kenya, Liberia, Madagascar, Mauritius, Mozambique, Namibia, Rwanda, Sierra Leone, Uganda, and Zimbabwe.

OWNERSHIP

Level 1

BEE Contribution level on the DTI's Construction Sector Codes of Good Practice.

Improved performance in employment equity and preferential procurement.



BLACK SHAREHOLDING



BLACK WOMEN SHAREHOLDING



Investing in communities remains our pride and joy. Our social responsibility programs continue to contribute positively to improving lives of our beneficiaries.

R230 208,68

Spent on uplifting communities through socio-economic development.

SPENDING ON

Skills Development



STAFF DEVELOPMENT

AMOUNT SPENT ON TRAINING

R521 292,41



INTRODUCTION

Since its formation in 1972 Mariswe's¹ objective has been to improve people's lives through the provision of sustainable civil engineering services.

Over 50 years of tried and tested values have provided the foundations upon which Mariswe is built. Despite the prevailing industry challenges within the construction sector, Mariswe remains strong, confident and ready to serve existing and new clients.

Mariswe's strong presence across 9 South African offices allows us to work closely and directly with our clients. The depth of engineering skill in all these offices enables us to deliver projects of scale in our core disciplines of Transportation, Water and Sanitation, Structures and Infrastructure Planning. Our project delivery is largely through civil engineering consulting and project management practices. We have resources throughout the country to ensure project focus, while utilising our the local offices for project context which enables client and community interaction.

We have cut our teeth on the continent, having delivered projects outside South Africa for decades, and are well poised to contribute to delivering the infrastructure required for future generations and economic development.

Our solutions-based culture has led us to broaden our client base, offering a leading role throughout project lifecycles from capital development through operation, maintenance and closure of projects.

Public Private Partnerships

Over the past 6 years we have grown in delivering the Public Private Partnership (PPP's) projects. Our multidisciplinary approach to projects has moved us from being ordinary team members to project leaders. The PPP Advisory Services have become critical to funding public infrastructure in times where public sector financial resources are stretched between competing socio-economic needs. Some of the PPP projects we have delivered include the following:

City of uMhlathuze Wastewater Reuse

Appointed as Transaction Advisors (Project Lead) for the investigation and feasibility studies for the PPP project. Mariswe is the project lead and technical experts on this project.

The New Roche Bois Wastewater Pumping Station and New Baie Du Tombeau

Transaction Advisory Services For The New Roche Bois Wastewater Pumping Station and New Baie Du Tombeau Wastewater Treatment Plant, Mauritius.

National Metrology Institute of South Africa (NMISA)

New Head Office and Laboratories, Transaction Advisor, Technical and Civil/Structural Engineering.

Innovation Hub

New Commercial Building, Transaction Advisor, Technical and Civil/Structural Engineering.

DHET's student infrastructure programme at 4 selected public universities & TVET colleges in SA

The Development Bank of Southern Africa: Appointment of Transaction Advisor for the DHET's student infrastructure programme at 4 selected public universities & TVET colleges in SA-DBSA for Student Accommodation-feasibility study.

Kopanong Precinct

Transaction Advisor for the Kopanong Precinct Project. Project managers for Electrical, Environmental, HVAC, Fire and Traffic Engineering.

Lobatse Prison Rehub

Transaction Advisor Services For Prisoner Rehabilitation Centre At Lobatse For Botswana Prison Service.

Centrum and Virginia Airport Redevelopment Project

Transaction Advisors for this eThekweni project which is a Municipal Asset Transfer Regulation (MATR).



We engineer solutions which build communities because we are passionate about improving people's lives.



Mhlengano Water Supply in Eswatini

AN EMPOWERED SOUTH AFRICAN COMPANY

Mariswe is 100% employee owned with 49.17% direct shareholding, 32.65% by the Mariswe Black Employee Trust (MBET), and 18.18% held by the Mariswe Share Trust.

Level 1

BEE Contribution level on the DTI's Construction Sector Codes of Good Practice

 **60.22%**
BLACK SHAREHOLDING

 **27.73 %**
BLACK WOMEN SHAREHOLDING

50+
YEARS EXPERIENCE

PROFESSIONAL AFFILIATIONS

Mariswe is registered with the following professional organisations:

- The Engineering Council of South Africa (ECSA);
- The South African Black Technical and Allied Careers Organization (SABTACO);
- Consulting Engineers South Africa (CESA);
- The South African Road Federation (SARF);
- The Institute of Municipal Engineering of Southern Africa (IMESA);
- The Water Institute of Southern Africa (WISA);
- Southern African Asset Management Association (SAAMA).



MANAGEMENT & DIVISIONS

The board of directors is responsible for the overall governance of the company. Management and operations are overseen by a management committee (Manco) which includes the CEO, CFO, divisional heads and infrastructure advisors. The CEO (Nonkululeko Sindane), assisted by an executive committee (Exco), manages day-to-day business between meetings of the Board and Manco.

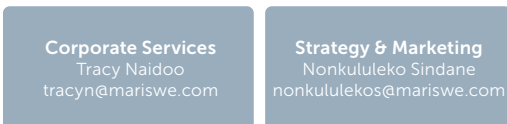
The Company services clients throughout South Africa from the four regional offices namely Gauteng, Eastern Cape, Western Cape, and Kwazulu Natal.

Each office has dedicated executive managers responsible for discipline-specific business units, who report to the division heads. The division heads are responsible for the full operations and ensuring company-wide capacity and providing discipline-specific oversight to projects and business units in the company.

GOVERNANCE



STRATEGY & CORPORATE SERVICES



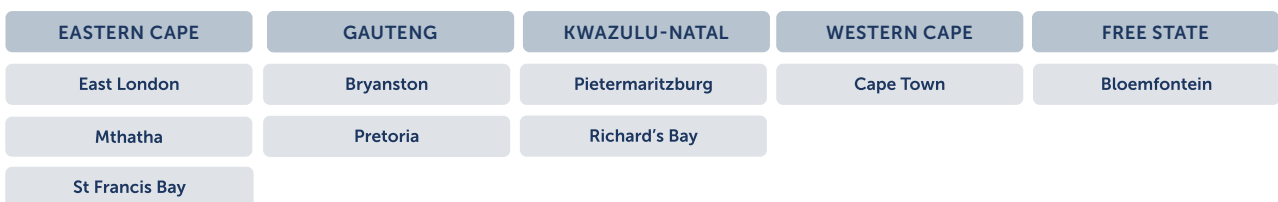
CIVIL ENGINEERING SERVICES



TECHNICAL SUPPORT FUNCTIONS



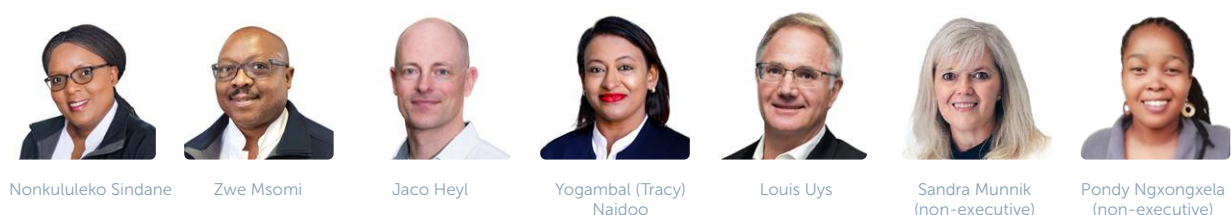
NATIONAL FOOTPRINT



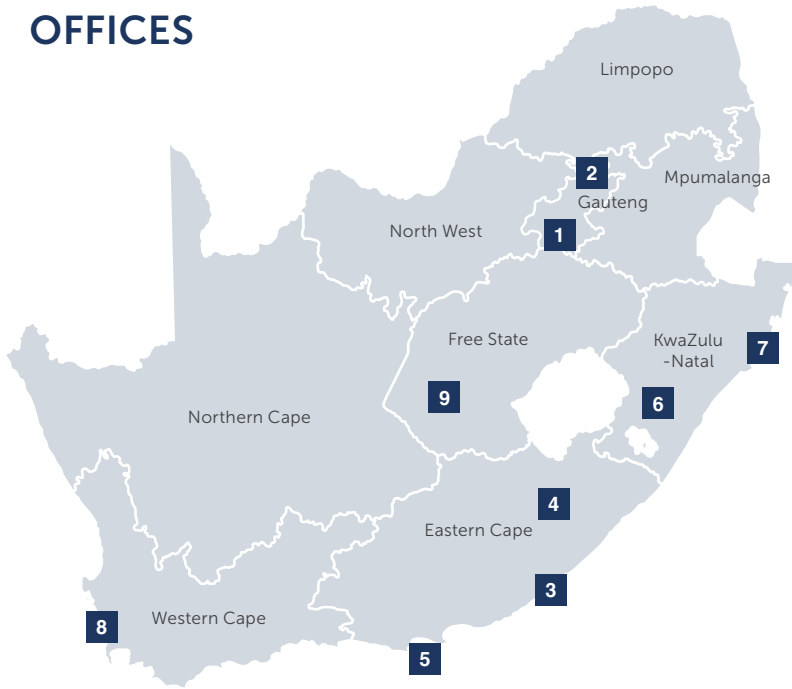
INTERNATIONAL OFFICES



BOARD OF DIRECTORS



OFFICES



SOUTH AFRICA

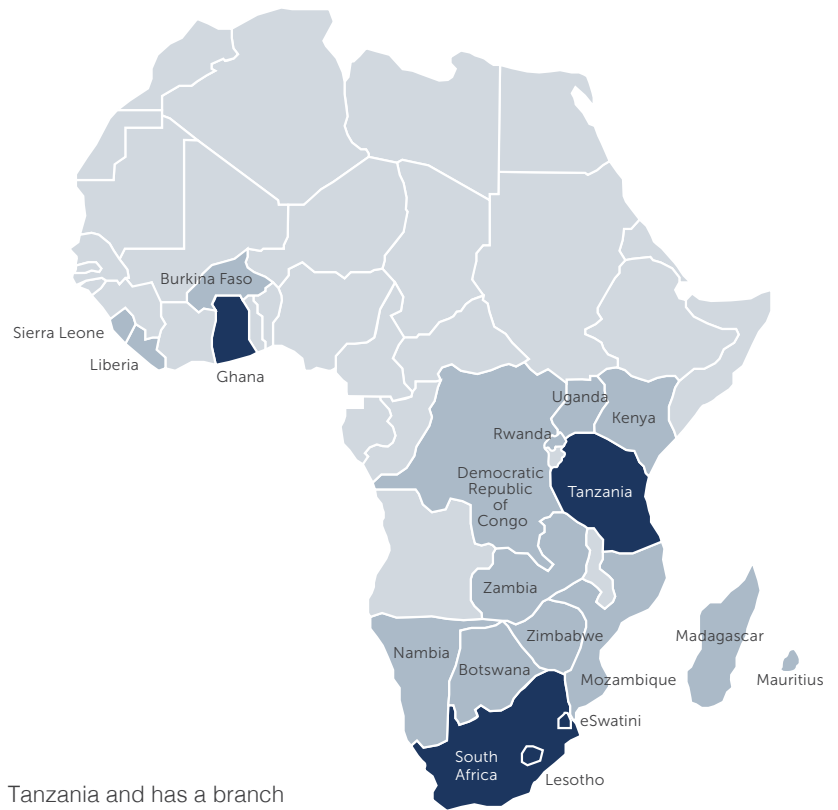
- 1** Johannesburg
- 2** Pretoria
- 3** East London
- 4** Mthatha
- 5** St Francis Bay
- 6** Pietermaritzburg
- 7** Richards Bay
- 8** Cape Town
- 9** Bloemfontein



ROOTS IN AFRICA

Mariswe operates subsidiary firms in Ghana, Tanzania and has a branch office in Lesotho. In addition to significant assignments in these countries, the company has completed or is working on projects in Botswana, Burkina Faso, Democratic Republic of Congo, eSwatini, Kenya, Liberia, Madagascar, Mauritius, Mozambique, Namibia, Rwanda, Sierra Leone, Uganda, Zambia and Zimbabwe.

Mariswe has completed assignments on projects funded by a range of development finance institutions including the European Commission, World Bank, Millennium Challenge Corporation and Development Bank of Southern Africa, among others.



Offices & ongoing projects throughout Africa

- Office
- Project



ASSURED OF QUALITY

Mariswe's Quality Management System has held ISO 9001 certification since 2007 and is currently ISO 9001:2015 certified. The company has an active environmental management system.



PROFESSIONAL INDEMNITY INSURANCE

Mariswe has company professional indemnity insurance of up to R129 million for every claim and is able to increase this figure as required to meet specific project needs.



ETHICALLY DRIVEN

Mariswe's Social and Ethics Committee ensures that the company acts ethically and with integrity in its relationships with internal and external stakeholders. The Mariswe Code of Conduct and a Business Integrity Management Policy serve as anchors for all employees in the company. These are aligned with the codes and policies of Consulting Engineers South Africa (CESA), the Construction Industry Development Board (CIDB), and the International Federation of Consulting Engineers.



STAFF DEVELOPMENT

Mariswe has a policy of recruiting and retaining high quality, professional staff.

Through a well-managed process of staff assessments, combined with client project performance feedback, we strive to ensure that high service levels are maintained.

Our staff development strategy includes induction training, mentoring, coaching, bursary support for undergraduate and postgraduate qualifications, attendance at workshops and conferences, on-the-job training, in-house workshops and Continuing Professional Development (CPD).

Bursaries are available to all permanent Mariswe employees pursuing qualifications that align with their job responsibilities and the company's strategic objectives.

Leadership Development

Mariswe supports careers and not just jobs. As part of its employee development strategy the company offers two programmes to prepare employees for future leadership roles within the company:

- A **Leadership Development Programme (LDP)** providing structured learning for any staff member identified as having leadership potential;
- **Training for Succession**, a programme for individuals identified for growth into specific positions.

The LDP aims to develop selected employees through internal and external training, mentoring and coaching to fill leadership roles in the future. Up to 10 employees are selected annually to join the three-year programme.

Employees who complete the LDP are eligible to be considered for senior management positions as identified by Manco.



Professional Registration

Mariswe encourages and supports its engineering graduates to achieve professional registration through its formal "Blueprint" mentoring programme which has been active for more than 10 years.

Below is a breakdown of the permanently employed engineering, professional technical human resources in Mariswe's South African operations.

- | | |
|-------------------|---------------------------|
| ■ Pr Eng: 16 | ■ Pr Techni Eng: 6 |
| ■ Engineer: 5 | ■ Technician: 10 |
| ■ Pr Tech Eng: 9 | ■ Pr Other Tech: 3 |
| ■ Technologist: 8 | ■ Other Professionals: 13 |

These professionals are backed by a full team of administrative, financial and human resources staff across all our offices.

Young Professionals

Taking their cue from CESA's Young Professionals Forum (YPF) for professionals under the age of 35 in the built environment sector, Mariswe's young professionals have established their own support group within the company known as HYPE (Helping Young Professionals Excel). HYPE provides a platform where the young professionals at Mariswe can network, share issues of common interest, and help one another and the company to grow and prosper.

A RESPONSIBLE CORPORATE CITIZEN

Mariswe believes the long-term sustainability of its business and the environment in which we work can only be achieved by playing a direct role in the empowerment of communities and small enterprises. Responsible corporate citizenship is central to our ethos of *Improving Lives. Engineering Solutions.*

The company's support falls into three broad areas:

- Socio-economic Development;
- Supplier Development;
- External Bursary Programme.

Socio-Economic Development

Mariswe promotes employee involvement and volunteerism in its socio-economic development support programmes. Branch offices identify projects to positively impact beneficiary communities. Aside from individual projects identified annually, the company has launched "Nurture a Girl" programme and supports the CESA Job Shadow as ongoing initiatives.

• Nurture a Girl

Mariswe's Nurture a Girl initiative was launched in 2017 to help empower South African girl learners by reaching into the less privileged communities to support girls in secondary schools.

Mariswe annually sponsors 50 female learners in Grades 8 to 12 around South Africa, some of the beneficiaries remain with the programme over several years. They are also given structured opportunities to attend workshops and presentations on subjects close to their hearts, receive career advice and learn basic skills.

The beneficiaries are chosen by their teachers in schools near Mariswe's offices and mentored by Mariswe staff.

Mariswe invites other businesses to help expand the initiative by sponsoring a girl for a year or contributing to general sponsorships. Mariswe's research to launch the programme yielded a long list of potential beneficiaries at our partner schools – and we are currently addressing just the tip of the iceberg.



Nurture A Girl visiting visiting a school in Pietermaritzburg



Nurture a Girl at school for learners with disabilities, Eastern Cape

Job Shadow Task

- **CESA Job Shadow Initiative**

As part of the effort to ignite a passion in technical careers among scholars, Mariswe's young professionals (YPs) have proudly hosted more than 1 000 learners through CESA's Job Shadowing Initiative and Poster Competition since inception 12 years ago. Every year learners from schools around South Africa are introduced to the work done in our offices by our civil engineers and given a personal view of some of our most interesting projects through guided site visits.



Supplier Development

Mariswe is partnering successfully with several Exempt Micro Enterprises (EMEs) and Qualifying Small Enterprises (QSEs) around South Africa. All are professional service providers in the infrastructure/built environment sector and potential suppliers of services to Mariswe and its clients.

Emerging businesses in Mariswe's supplier development programme receive exposure to potential clients, access to professional guidance, assistance with compliance and cash flow management among other benefits that help them remain sustainable and relevant to industry needs.

Mariswe's supplier development partners have complementary competencies that add value to Mariswe and our clients.

Bursary Programme

Recognising a need to develop not only its own staff but also a broader pool of technical skills, Mariswe has an active bursary and grant programme providing financial support to external applicants and the children of employees.

- **External Bursaries**

Mariswe provides a limited number of bursaries in South Africa to students who have successfully completed at least one year of study in BSc (Eng), BEng, BTech or post graduate studies in civil engineering at recognised South African universities and universities of technology.

- **Children of Employees**

In 2008 Mariswe established an internal fund to assist the children of eligible employees to complete their secondary school education. In the past 12 years the scope of the Mother Theresa Fund has grown to include financial support for primary, secondary and tertiary education depending on the needs of the families concerned. The aim is to give the children of Mariswe employees, as well as children for whom Mariswe employees are legal guardians, opportunities to realise their full potential.



TRANSPORTATION

Mariswe offers integrated transportation services, throughout the infrastructure lifecycle, from concept and design to operation and maintenance. The company employs qualified professionals and places strong emphasis on delivering quality engineering solutions incorporating the latest global technologies. Building on the experience of providing sustainable transportation infrastructure across sub-Saharan Africa for more than 50 years, our multi-disciplinary transportation service offering includes:

Design and rehabilitation of roads and runways

Design investigations, route planning and location, survey, location of construction materials, geometric design, pavement design, preparation of tender/contract documentation, drawings and construction supervision for:

- Rural and urban roads and runways;
- Bus rapid transport routes;
- Mine access roads and plant platforms;
- Roads and parking areas for public and private building developments;
- Airport runways, taxiways and aprons;
- Rehabilitation of existing roads and freeways;
- Rehabilitation and upgrading of existing airport runways.

Transportation planning and traffic engineering

Road based transportation planning ranging from transportation networks to public transportation and traffic engineering studies, including:

- Impact assessments;
- Traffic control and management;
- Public transport, bus and taxi facilities and pedestrian facilities;
- Network planning;
- Cost-benefit analysis;
- All processes involved in the development of integrated transport plans.

Output and Performance Based Road Contracts

Output and Performance Based Contracting (OPRC) OPRC has proven highly beneficial in managing unpaved road networks globally, providing all-weather access for remote communities to vital social services, markets and neighboring areas. It minimizes asset deterioration, maintains an acceptable level of service, and optimizes government funding for these networks.

Mariswe has been involved in several Output Performance Based Roads Contracts (OPRC) projects in Africa over the past decade through all project phases including

- Inception, Assessment and Feasibility Studies
- Concept and Preliminary Design
- Tender Documentation and Bid preparation and
- Construction Monitoring

These projects have been situated in Lesotho, Ghana, Rwanda and Zambia. Mariswe has built capacity among local organizations and governments to manage road assets and understands the importance of these projects to the economic growth of the region they are implemented in.



Eswatini Reservoir



WATER & SANITATION

Mariswe provides comprehensive water engineering services from planning to construction management for the abstraction, conveyance, storage and drainage of raw, potable, treated and waste water. This includes

- Water resource planning and studies;
- Situation assessments and catchment studies;
- Reconnaissance, pre-feasibility and feasibility studies for water resource developments;
- Bankable feasibility studies for new mining and industrial developments;
- Management and co-ordination of multidisciplinary planning studies;
- Infrastructure planning, design and construction;
- Dams, weirs and river abstraction works;
- Bulk raw and treated water pump stations and reservoirs;
- Bulk conveyance systems including canals and large bore pipelines;
- Urban reticulation for water supply and sewage networks;
- Irrigation systems;
- Solid waste disposal;
- Water conservation, demand management, leak detection and leak control;
- Water source development and bulk supply systems for mining and industrial developments;
- Development and support for water services authorities;
- Institutional structures for operation and maintenance;
- Operate, maintain, train and transfer projects;
- Floodlines;
- River diversions;
- Basic water and sanitation services;
- Rural water supply schemes;
- Water treatment works;
- Waste water treatment works;
- Wellfield development and borehole equipment and abstraction;
- Trenchless sewer and water pipe rehabilitation (CIPP and pipe cracking);
- Transactional advisory services for Public Private Partnerships (PPPs).

We have substantial experience in large multidisciplinary water and wastewater treatment projects, including process, civil, mechanical and structural design of new treatment works, upgrading and refurbishment of existing works, process optimisation and review.

Mariswe has undertaken several water resources planning studies, reconnaissance studies and water services master plans for the public sector as well as mining and other private clients.



STRUCTURES

Mariswe's expertise spans a wide variety of structural forms and material types. We offer analytical and design services for civil, commercial, industrial, institutional, health and residential structures.

The individual team members have experience in projects including high rise buildings, bridges, industrial buildings, shopping centres, hospitals, schools, cold storage facilities, distribution warehouses, civil engineering structures, mining structures and water-retaining structures among others.

We aim to create structural schemes that are suitable for purpose, sensibly economical, and not unduly sensitive to change. Uncomplicated structural solutions that are easy to build provide good benchmarks. Our focus on sustainable structures includes reducing carbon footprint through use of recycled materials.

Specific areas of expertise include

- Prestressed and reinforced concrete design for civil engineering and building structures;
- Structural steel design for civil engineering and building structures;
- Facade and curtain walling design and detailing;
- High rise and commercial buildings;
- Advanced finite element design and application in bridge and building design;
- BIM (Building Information Modelling);
- Green buildings and sustainable engineering design;
- Assessment and rehabilitation of buildings and civil engineering structures;
- Dynamic analysis and seismic design;
- Bridge management systems;
- Fast track project management;
- Transactional advisory services for Public Private Partnership (PPP) contracts;
- Water retaining structures (reservoirs and water towers).





PROJECT MANAGEMENT

Overview

- Project management support;
- Scope management;
- Budget control;
- Resource management;
- Communication management;
- Risk management;
- Performance management;
- Supply chain management.

Programme Management

- Support to public and private sectors in managing multi-year infrastructure;
- Development, economic and social programmes;
- Programme design;
- Programme administration;
- Stakeholder management;
- Grant fund management support;
- Financial administration;
- Training and capacity building;
- Procurement support;
- Contract administration.

Construction Management

- Development of project implementation and procurement strategies;
- Management of the procurement process including tender documentation and adjudication;
- Compilation of construction contract documentation using one (or more) of NEC, FIDIC, GCC and Mariswe's own Integrated Construction Unit (iCU) contract methodology;
- Preparation of baseline construction resource schedules, project budgets, construction programmes and management;
- Procurement of materials and services and logistics management;
- Management and administration of capital works, rehabilitation and maintenance contracts;
- Management of public sector construction and maintenance units;
- Engineering, procurement and construction management (EPCM);
- Engineering, procurement and construction (EPC) contracts in partnership with engineering contractors for the rendering of turnkey solutions to clients who prefer to contract with single entities.








Development of a Housing Strategy for Lonmin



INFRASTRUCTURE PLANNING

Mariswe formulates strategic level multi-stakeholder plans for the development and lifecycle management of infrastructure. This takes cognisance of institutional, legislative, social and environmental imperatives in parallel with project constraints such as time and budget.

Infrastructure Financing	Infrastructure Planning & Management	Infrastructure Regulation	Infrastructure Auditing & Mapping
<ul style="list-style-type: none"> • Project identification & scoping; • Pre-feasibility & feasibility studies; • Business plans; • Infrastructure costing; • Project finance structuring; • Funding applications. 	<ul style="list-style-type: none"> • Infrastructure master plans; • Integrated transport plans; • Infrastructure management systems; • Water services development plans; • Traffic impact assessments; • Public transport plans; • Sustainable development plans; • Land use plans; • Road management systems. 	<ul style="list-style-type: none"> • Legal and statutory development advisory & compliance e.g. • Water services; • Municipal systems & municipal services; • Blue Drop & Green Drop compliance; • Land use planning & management; • Roads & transportation; • Human settlement development. 	<ul style="list-style-type: none"> • Economic & social infrastructure audits; • Road safety audits; • Infrastructure mapping; • Geographic information systems. 
			<p>Capacity Building & Institutional Development</p> <ul style="list-style-type: none"> • Stakeholder coordination, engagement, management & facilitation. 

Services include

- Strategic planning, programme development and management consulting services;
- Specialised assistance with feasibility studies and basic services delivery;
- Use of GIS (geographic information systems) and other software platforms;
- Planning for integrated development plans (IDPs), water services development plans (WSDPs), land use and zoning, institutions, forestry and transportation;
- Infrastructure mapping and infrastructure management systems;
- Legal and statutory issues;
- Information communication technology;
- Regional and local economic development;
- Planning and feasibility studies for industrial parks;
- Training and capacity building for clients, emerging consultants and learner contractors;
- Social liaison and facilitation;
- Financial, budget and programme management.

We also consult on socio-economic services including local, regional and sectoral economic development strategies, economic spatial frameworks and economic and social infrastructure audits.

Asset Management

In the past few years, we have undertaken projects with asset management components at differing scales. We have resolved to offer this as a full service to our clients to complement the core services we already provide. Consequently we have complied with registration requirements as a SAAMA member and are offering Asset Management Services as a discipline.



NLD 5/6 project - Combination Plough laying fibre optic infrastructure along the N2

NICHE AND SECTOR SPECIFIC SERVICES

Information and Communications Technology (ICT)

Mariswe has established a comprehensive work group for the effective implementation of telecommunications construction projects. Member firms specialise in telecommunication network (transmission technology and fibre) design, engineering and deployment services as well as the provision of network operations centre services. This is combined with Mariswe's expertise in project management, construction contracts, contract procurement and civil engineering services.

The following services are offered for ICT infrastructure

- Route survey and basic planning;
- Geotechnical investigations;
- Detail designs and construction drawings;
- Wayleaves and permitting;
- Contract strategy and documentation;
- Procurement of contractors and suppliers;
- Risk assessment and management;
- Establishment of project management offices;
- Site supervision and commissioning;
- Site close-out and handover.

The following transmission planning services are provided by member firms:

- Transmission and infrastructure planning;
- Procurement of transmission equipment service providers;
- Planning and installation of active equipment;
- Operation and maintenance of optical fibre network;
- Network operations centre.

Integrated Construction Unit (iCU) System

Mariswe's iCU system is a construction risk management methodology suited to dynamic project environments that need rapid responses to changes in the pace, nature, scope and sequence of the works. Important features of the iCU system are:

- Contractual flexibility;
- Construction cost savings up to 30%;
- Reduced lead times for fast track projects;
- Reduced disputes due to collaborative and team-oriented approach;
- Suitable for FIDIC and NEC4 contract platforms;
- Includes ISO 9001 accredited quality assurance procedures.

Agriculture

Mariswe's experience in the design and supervision of agricultural infrastructure projects extends over more than 25 years. Our clients include government departments and private sector companies. The company has successfully concluded several major private sector development projects in southern Africa incorporating the following:

- Dams;
- Canals;
- Pump stations;
- Large diameter pipelines;
- Irrigation systems;
- Land clearing and preparation;
- Dairies, Piggeries & Broiler farms.



Mining Infrastructure

Mariswe has worked closely with numerous project houses in the mining sector, successfully undertaking design and construction management assignments in South Africa, SADC countries and beyond.

We have also completed a wide variety of projects directly for mining houses. These include capital optimisation studies, restructuring of open pit mining contracts, as well as the design and construction management of mining and civil infrastructure. Our knowledge of the challenges of implementing projects in Africa enables us to provide valuable input into due diligence studies, bankable feasibility studies and project planning.

Mining infrastructure services offered by Mariswe include

- Design and construction management of bulk and mining infrastructure;
- Water resource planning and licensing, together with water balance analyses;
- Storage, conveyance and treatment of raw water;
- Effluent treatment and disposal;
- Access and haul roads (surfaced and gravel) including bridges and drainage structures;
- Heavy duty and special purpose pavements for use by off-highway mining vehicles and equipment;
- Runways and airfields;
- Mining structures: structural steel, reinforced concrete, composite structures, buildings;
- Tailings disposal and return water infrastructure;
- Hydrological studies including floodline determination, storm water management and river diversions;
- Civil services for process plants, mining areas and residential areas;
- Formulation of project specifications and conditions of contract for both underground and open pit mining operations;
- Contract administration incorporating resource management, financial management and contract dispute resolution.



BRANCH CONTACT DETAILS

SOUTH AFRICA

Johannesburg

University House, Eton Office Park West, Harrison Avenue, Bryanston, 2191

+27 (0)11 709 8420

bryanston@mariswe.com

Pretoria

Block 1, Suite 201, Monument Office Park, 79 Steenbok Ave, Monument Park, Pretoria, 0181

+27 (0)12 424 9700

pretoria@mariswe.com

Bloemfontein

43 Jac van Rhyn Drive, Universitasrif, Bloemfontein, 9301

+27 (0)87 802 8568

annalizev@mariswe.com

East London

Clevedon House, 2 Clevedon Road, Selborne, East London, 5241

+27 (0)43 721 0186

eastlondon@mariswe.com

Mthatha

61 Delville Road, Mthatha, 5100

+27 (0)47 531 2965/6

mthatha@mariswe.com

Richards Bay

Office 1.2, First Floor, 15 on Cent, Sanlam Center, 15 Cent Circle, Richards Bay Central, Richards Bay, 3900

+27 (0)35 789 5011

richardsbay@mariswe.com

Pietermaritzburg

No. 7 Bush Shrike Close, Victoria Country Club Estate, 170 Peter Brown Drive, Montrose, Pietermaritzburg, 3201

+27 (0)33 347 7900

maritzburg@mariswe.com

Cape Town

1st Floor, Block D, Greenford Office Estate, Punters Way, Kenilworth 7708

+27 (0)21 761 6999

capetown@mariswe.com

St Francis Bay

139 St Francis Drive, St Francis Bay, 6312

+27 (0)82 899 0578

shaunp@mariswe.com

INTERNATIONAL

Mariswe Ghana, Tanzania & Lesotho

Please contact:

+27 (0)82 941 4805

nonkululekos@mariswe.com