

**UNICORN
DenMart** **UE**[®]
Behind The Best Indian Dentists

Precision Meets Perfection
Crafting Smiles with Every Mill

 **DGSHAPE**
by  Roland

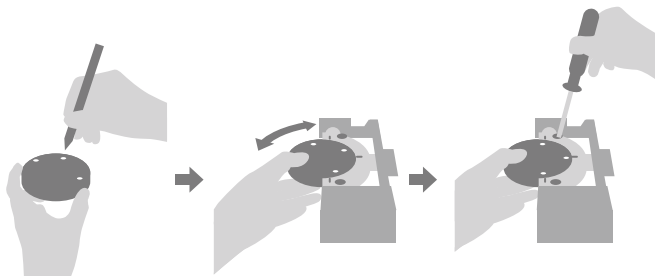


DWX-52Di Plus

Precision Performe and Efficiency Expert

Introducing the New DWX 52Di Plus 5-Axis Dental Mill for Maximum Efficiency and Production

When designing this new model of the industry's best-selling series of dental mill. It was important to keep everything users love. Then make it even better, capable of producing a wide range of restorations, including crowns, copings, bridges, inlays and onlays, veneers, abutments, implant bars, screw-retained crowns, the DWX-52Di Plus 5-Axis dental mill offers a high reliable, precise, enhanced capabilities to make your lab more efficient and productive.



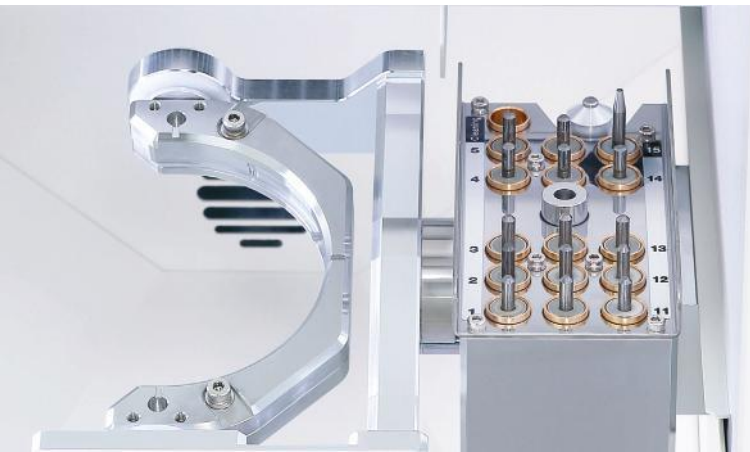
New C-type Clamping System

The new C-type clamp system for 98.5mm discs offers fast and secure set-up of Zirconia, Wax, PMMA, gypsum, PEEK, glass fiber-reinforced resin, composite resin and CoCr sinter metal materials. The new C-type clamp enables greater material utilization.



More Comprehensive Solution

The DWX-52Di Plus 5-Axis dental mill can produce a wide range of restorations, including crowns, copings, bridges, inlays an onlays, veneers, abutments, implant bars, screw-retained crowns.

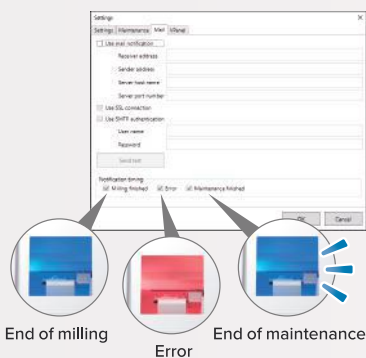


15-Station Automatic Tool Changer (ATC)

The DWX-52Di Plus provides continuous, unattended milling with a 15-station Automatic Tool Changer (ATC) and includes dedicated slot for an included cleaning tool. Now you can load the included cleaning tool into the ATC and set it up to automatically sweep away zirconia powder and other material dust for a cleaner milling surface.

User-friendly Design

A user-friendly Virtual Machine Panel (Vpanel) enables convenient production and device monitoring from computer. Email notifications keep you informed of operational status, including milling and maintenance completion, or any errors in order to minimize down time.



Precision 5-Axis Milling

The DWX-52Di Plus simultaneously rotates and tilts discs for deep undercuts and milling large arch applications and other full-mouth restorations with ease.

Intelligent Tool Control

Vpanel operation has upgraded to include the Intelligent Tool Control function that intuitively swaps out tools from their stocker position when they have reached their user-defined lifespan with a designated replacement tool without needing to pause production.

Comprehensive Support Network

In addition to online or telephone assistance, DGSHAPE also offers educational seminars aimed at increasing customers' familiarity and confidence with products and services. Service engineers are also available worldwide to assist customers with any questions they may have.



Specifications	
Millable Material	Zirconia, Wax, PMMA, Composite Resin, PEEK, Gypsum, Glass-Fiber-Reinforced Resin, CoCR sinter metal
Loadable workpiece shape	Disc-type (with step) Step section: 98.5 mm (3.88 in.) (diameter), height 10 mm (0.39 in.) Body section: 95 mm (3.74 in.) (diameter), height max. 60 mm (2.36 in.)
Operating speed	XYZ axis: 6 to 1,800 mm/min. (0.24 to 70.9 in./min.)
Spindle motor	Brushless DC Motor
Spindle rotating speed	6,000 to 30,000 rpm
Rotatry axis travel angle	A: $\pm 360^{\circ}$, B: $\pm 30^{\circ}$
Number of milling burs housed	15
Attachable milling bur	Shank diameter: 4 mm (0.16 in.), Length: 40 to 55 mm (1.57 to 2.17 in.)
Compatible compressed air	0.02 to 0.2 Mpa
Control command set	RML-1, NC code
Interface	USB
Power requirements	AC 100 V to 240 V $\pm 10\%$, 50/60 Hz (overvoltage category II, IEC60664-1), 2.0 A
Power Consumption	Approx. 200 W
Operating noise	During operating: 70 dB (A) or less (when not cutting), During standby: 45 dB (A) or less
External dimensions	Widht x Depth x Height: 495 x 660 x 600 mm (19.5 x 26.0 x 23.6 in.)
Weight	67 kg (147.7 lbs.)
Installation environment	Indoor use, Altitude: Up to 2,000 m (6,562 ft.), Temperature: 5 to 40°C (41 to 104° F), Humidity: 35 to 80% (no condensation), Ambient pollution degree: 2 (as specified by IEC 60664-1), Short-term temporary overvoltage: 1,440 V, Long-term temporary overvoltage: 490V
Included Items	Power cord, USB cable, Manuals, DGSHAPE Software Package CD, Detection pin, Automatic correction jig, Material Adapter Rack, Pin-type material adapter, Hexagonal driver, Spanner (for clamp), Spanner (for spindle), Milling bur holders, Milling bur positioner, Cleaning tool, Option adapter ID labels, Dust collection hoses, Dust collection hose adapter, Regulator, Cleaning brush etc.

DWX-52D Plus

New Clamping System:

A new snap-on clamp system with 6 included adapters for 98.5mm discs offer fast and secure set-up of different materials.

User-friendly Design:

A user-friendly Virtual Machine Panel (Vpanel) enables convenient production and device monitoring from your computer.



Adaptor Rack for Increased Efficiency:

6 adapters for 98.5mm material discs are included as standard with the DWX- 52D Plus allowing you to queue up multiple milling jobs for efficient job management. An optional disc adapter rack is also available.

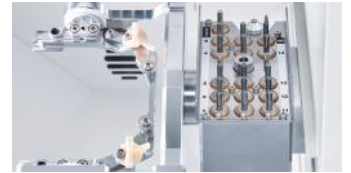
5
Axis

15
Tools

Dry

Mill

6
Adapter



Specifications

Millable Material	Zirconia, Wax, PMMA, Composite resin, PEEK, Gypsum, Glass fiber reinforced resin, CoCr sinter metal
Spindle Rotating Speed	6,000 to 30,000 rpm
Rotary Axis Travel Angle	A : $\pm 360^\circ$, B: $\pm 30^\circ$
Number Of Milling Burs Housed	15
Compatible Compressed Air	0.02 to 0.2 Mpa
Interface	USB
Power Consumption	Approx. 200 W
Weight	67 KG (147.7 lbs.)

DWX-52DCi Plus

The ultimate in 24-hour productivity

Increased productivity and maximum versatility:

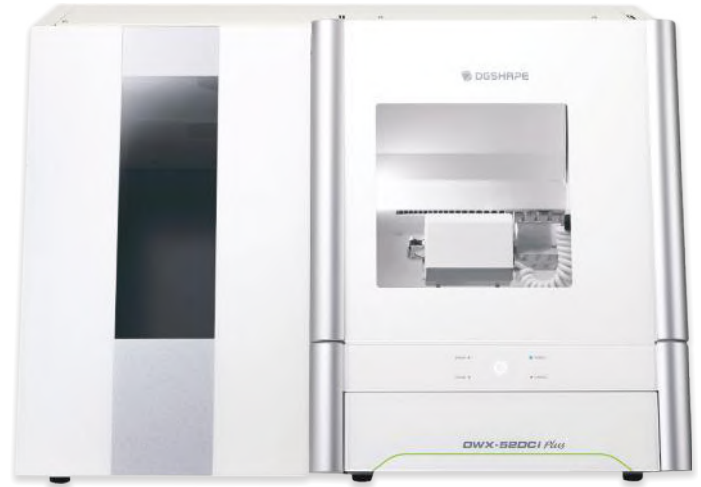
A snap-on clamp system for the Automatic Disc Changer enables loading of up to six 98.5mm discs for continuous milling of multiple jobs

DWINDEX Software Monitors Your Milling Performance:

Monitor milling operations and help you determine ROI so you can better plan, identify and manage machine productivity and lab profitability.

Reliable, Unattended Milling: Load the 15-station Automatic Tool Changer

Precision 5-Axis Milling: A smooth and steady ball screw-driven system offers exceptionally precise results.



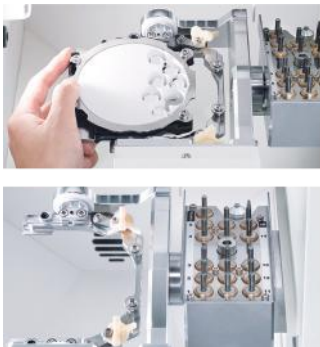
5
Axis

15
Tools

Dry

Mill

6 Automatic
Disc Changer



Specifications	
Millable Material	Zirconia, Wax, PMMA, Composite resin, PEEK, Gypsum, Glass fiber reinforced resin, CoCr sinter metal
Spindle Rotating Speed	6,000 to 30,000 rpm
Rotary Axis Travel Angle	A : ± 360°, B: ± 30°
Number Of Milling Burs Housed	15
Compatible Compressed Air	0.02 to 0.2 Mpa
Interface	USB
Power Consumption	Approx. 200 W
Weight	105 KG (231.5 lbs.)

DWX-53DC

ADVANCED MILLING TECHNOLOGY The Best Is Now Even Better

The completely new design allows for high-precision and rapid milling.

Storage: All the accessories can be stored at the storage space.

Tablet stand: By loosening the screws on the top of the storage, the tablet stand can be pulled out.

ZS-53DC: The tool gripping force has been increased compared to the ZS-52D, resulting in further improvement of machining stability.

Auto Tool Changer (ATC) Milling bur change operation is performed by the ATC motor. Compressed air is not necessary for ATC. (Compressor is not used for ATC.)

Adapter replacement: In the DWX-53DC, the changer unit operates in the vertical direction. For the desired adapter, the AB axis unit moves forward and changes the adapter.

ATC Magazine and Milling Bur Sensor: 15 milling burs can be set to the ATC magazine.

Air Flow Sensor: Cutting waste is taken out using dust collector. The air flow sensor monitors the air flow to prevent the machine from operating when the dust collector is not used.

Milling burs: Only milling burs with a shank diameter of 4 mm can be used. Use the milling bur positioning jig to match the length of the milling bur.



- 5
Axis
- 15
Tools
- Dry
Mill
- Automatic
Disc Changer

Specifications	
Millable Material	PMMA, Zirconia, Wax, Composite Resin, PEEK, Gypsum, Glass-Fiber-Reinforced Resin, Pre-Sintered Chromium Cobalt
Spindle Speed	30,000 RPM
Rotary Axis	A : $\pm 360^\circ$, B: $\pm 35^\circ$
Air Pressure Requirements	0.4 Mpa
External Dimensions (WxDxH)	23.62 in. x 29.25 in. x 32.75 in.
Weight	264.55 lbs. (120 kg)
Disc Changing Time	1 minute, 7 seconds
Material Adapter Compatibility	Standard Adapter: ZMA-53DC, Open-Edge Adapter: ZMA2-53DC
# of Material Adapter Patterns	100
Additional Features	Redesigned, more robust spindle for 3x the gripping power with PMMA applications. Built-In Integrated Webcam, Automatic Extractor Filter Cleaning, Thermohydrometer Accelerometer Sensors
Accessories Included	Dedicated Extraction Unit and Connection Cable, Built-In Integrated Webcam, Material Adapter Disc Rack (ZR-53DC), Standard Material Adapters (6-Pack, ZMA-53DC), Open-Edge Material Adapter (ZMA-53DC), 4.0 mm Roughing Tool (ZRB-200D), Diamond-Like Coated (DLC) Milling Tool Set (ZPB-100D, ZPD-50D, & ZPB-30D)
Attachable Bur	Shank 4 mm (Diameter), 40-55 mm (Length)
Loadable Workplace	Step Section: 98.5 mm Diameter, 10 mm Height; Body Section: Max Height 60 mm

Specifications	
Millable Material	Zirconia, Wax, PMMA, Composite Resin, PEEK, Gypsum, Glass-Fiber-Reinforced Resin, CoCR sinter metal
Loadable workpiece shape	Disc-type (with step) Step section: 98.5 mm (3.88 in.) (diameter), height 10 mm (0.39 in.) Body section: 95 mm (3.74 in.) (diameter), height max. 60 mm (2.36 in.)
Operating speed	XYZ axis: 6 to 1,800 mm/min. (0.24 to 70.9 in./min.)
Air Pressure Requirement	0.4 Mpa
Spindle rotating speed	6,000 to 30,000 rpm
Rotatry axis travel angle	A: $\pm 360^\circ$, B: $\pm 35^\circ$
Number of milling burs housed	15
Attachable milling bur	Shank diameter: 4 mm (0.16 in.), Length: 40 to 55 mm (1.57 to 2.17 in.)
Disc Changing Time	1 min. 7 sec.
Control command set	RML-1, NC code
Interface	USB
Power requirements	AC 100 V to 240 V $\pm 10\%$, 50/60 Hz (overvoltage category II, IEC60664-1), 2.0 A
Power Consumption	Approx. 250 W
External dimensions	Widht x Depth x Height: 495 x 660 x 600 mm (23.62 x 29.25 x 32.75 in.)
Weight	264.55 lbs (120 kg)
Additional Features	Redesigned, more robust spindle for 3x the gripping power with PMMA applications. Built-In Integrated Webcam, Automatic Extractor Filter Cleaning, Thermohydrometer Accelerometer Sensors
Accessories Included	Dedicated Extraction Unit and Connection Cable, Built-In Integrated Webcam, Material Adapter Disc Rack (ZR-53DC), Standard Material Adapters (6-Pack, ZMA-53DC), Open-Edge Material Adapter (ZMA-53DC), 4.0 mm Roughing Tool (ZRB-200D), Diamond-Like Coated (DLC) Milling Tool Set (ZPB-100D, ZPD-50D, & ZPB-30D)



OF
EXCELLENCE



WHERE TRUST COMES FIRST



**Warranty Ke Saath Bhi
Warranty Ke Baad Bhi**

For Sales Queries

 85277 00805

 cadcamcrm@unicorndenmart.com

Customer Care

 011-45551250, 95994 48518

 care@unicorndenmart.com | care1@unicorndenmart.com



SCAN TO VISIT OUR WEBSITE



Corporate Office: 3 Local Shopping Centre, MOR Land, Near J Block DDA Market,
New Rajender Nagar, New Delhi □ 110060

    /unicorndenmart.com

* Accessories shown may not be a part of standard equipment. Specifications are subject to change without notice.

Ver 12/2024