

Redefining
Dental Milling
Tomorrow's Technology Today



INDEX

Product Name :	Page No.
About Arum Dentistry :	01
Arum 5X-300 Pro	02
Arum 5X-200 :	06
Arum 5X-500 :	10
Arum 5X-450 :	14
Intraoral Scanbody :	18

Excellent Precision and Durability



The Leading Company in
Digital Dentistry.

ARUM DENTISTRY

Founded in 2000 as a leader in the digital dentistry solution, ARUM DENTISTRY has been providing Digital Total Solution for prosthetic treatment based on a digital prosthesis production solution (Dental CAD/CAM milling machine, dental materials) such as 3D Printer System (Metal, LCD, DLP, Resin, UV curing machine, etc.), Zirconia Block Implant and CAM Software, thereby leading the digital dentistry market.



ARUM DENTISTRY has invigorated the patent-customized abutment by utilizing industry's first pre-milled blank machining. With the worldwide CAD/CAM processing machining cases accumulated over the last 20 years, ARUM DENTISTRY has built the world's largest library & dental material line-up and is expanding the line-up through continuous product development.

ARUM DENTISTRY is building its unrivalled competitiveness through the meticulous inspection of all products, continued efforts to acquire international licenses (KGMP, FDA, CE, NMPA, PMDA), and customer support and A/S within 24 hours with the aim of realizing the highest-level quality management.

Taking the lead in innovating the world's most differentiated technologies, ARUM DENTISTRY has been exporting its products to more than 70 countries, earning recognition from users around the world for its technology. ARUM DENTISTRY is advancing towards Digital Dentistry Innovation by constantly listening to the voices of customers and endeavouring to research and develop advanced technologies

ARUM 5X-300 Pro Bright Future, Right System



Zirconia

PMMA

Resin

Wax

Ceramic Glass



Efficient C-TYPE JIG

Labial (or Buccal) side texture and undercut area precision processing minimize post-processing time.

Easy and easy material change

You can easily exchange from disk to CAD block as it uses cartridge type materials.



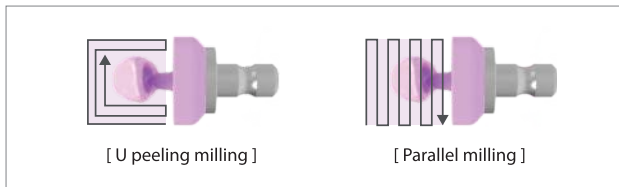


All in One System

An external compressor is not required, and all additional devices (Dust Collector, Coolant System) are built inside the table to overcome installation space constraint and minimize noise. ** German Renfert SILENT compact CAM model is used (optional)

High speed 80,000 RPM

By choosing one from 2 modes of roughing process (U peeling milling, and Parallel milling), you can process glass ceramic materials more effectively.

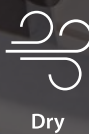
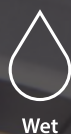


Excellent detail expression

Through groove, labial side texture precision processing using ARUM's exclusive 0.3mm tool for Zirconia, you can process prostheses close to natural teeth.



RPM
80,000





Zirconia Crown



Zirconia Hybrid Abutment



Crown & Coping Bridge

Materials & Applications Info.

Materials		Applications	
Pre-milled Blank (Titanium)	X	Implant Bar	X
Co-Cr & Ni-Cr Disk	X	Screw-Retained Bridge (Crown & Coping)	X
Titanium Disk	X	Customized Abutment	X
Lithium Disilicate	⊙	Hybrid Abutment	⊙
Nanocomposite	⊙	Inlay & Onlay	⊙
Zirconia	⊙	Crown & Coping	⊙
PMMA	⊙	Crown & Coping Bridge	⊙
PEEK	⊙	Model	⊙
Wax	⊙	Bite Splint	⊙
		Denture	⊙

⊙: High Compatibility / O: Compatibility / X: Non-Compatibility



Specifications

Axis	5-Axis	Drive Mechanism	Ball Screw
Processing	Wet and Dry	Way System	Linear Guide
Spindle Power	AC 0.5kw	Machine Size (W*D*H)	570*620*640mm
Max. RPM	80,000	Total Size (W*D*H)	570*620*1580mm
A.T.C	12	Weight (Machine / Table)	90kg / 65kg
Tool Shank (mm)	Ø4	Travel	X,Y,Z axis 159*120*90mm
Motor	Stepping		A / B axis ±30° / 360°

Tool List

	Code	Size	Code	Size
Basic	ZB-46	D2*L18*50	PB-51	D1.0*L10*44
	ZB-47	D1.0*L16*50	DG-52	D2.5*L13*44.5
	ZB-48	D0.6*L10*45	DG-53	D1.5*L10*44.5
	ZB-65	D0.3*L10*45	DG-54	D1.0*L10*44.5
	PB-49	D2*L18*50	DG-55	D0.6*L8*41
	PB-50	D1.5*L14*47		
Special	Code	Size	Code	Size
	MOB-56	D3.0*L20*50	ZF-75	D0.6*L8*45
	ZF-70	D1.7*L18*50	TC-80	D1.8*L08*45

Accessories

	
Disk Cartridge (C-Type)	CAD Block Cartridge

* Products are subject to change without notice to improve quality, function, design or otherwise.

ARUM 5X-200 Complete Ultimate System



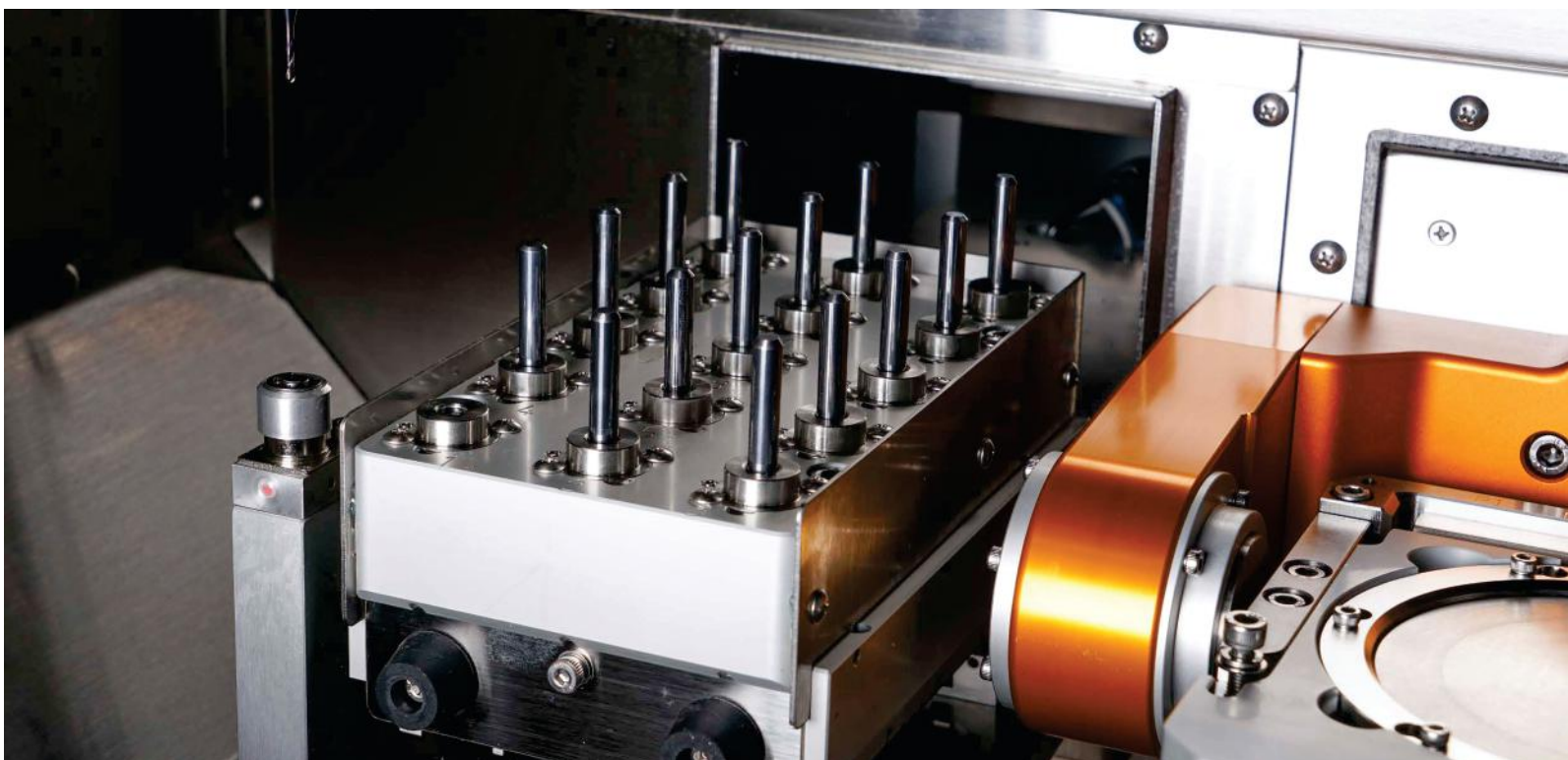
- | | | |
|-------|---------------------|----------|
| Co-Cr | Ni-Cr | Titanium |
| PMMA | Zirconia | Resin |
| Wax | Customized Abutment | |



A standard of METAL milling

This machine can be compared with none of the metal milling machine. You can mill various shapes such as Implant Bar Bridge, Screw-retain Bridge, and Partial Framework using various materials such as Titanium, Co-Cr, and Ni-Cr, etc.

Based on unsurpassed metal milling capability and extensive know-how accumulated over many years, the excellence of our product has been proven in the global market.





Mounting of 5 pre-milled blanks

With a function of mounting of 5 pre-milled blanks simultaneously. Also, you can product Customized Abutment without Connector with AT Holder. In addition, it is possible to process using the Straumann PMAB holder (Bushing type) exclusively for Straumann Pre-milled Blanks, so it has expandability.



Amazing milling power

With DC 3.0kw spindle, Servo Motor & Linear Guide, you can mill any dental material such as Titanium, Co-Cr, Pre-milled Blank, Zirconia, Lithium Disilicate, Nanocomposite, PMMA, PEEK, and WAX and more.



Special tool designed for perfection

The optimal tool designed to increase the completeness of milling. With use of ARUM's special tools such as Drill Tool, Reamer Tool, and Thread Tool, etc., you can achieve the best milling restoration.



DC
3.0kw



Wet



Dry



All Disk



Connectorless



CAD Block



Pre-milled



5Axis

Screw-Retained Bridge Crown & Coping

Co-Cr & Titanium Disk



Implant Bar & Screw-Retained Bridge Coping



Materials & Applications Info.

Materials		Applications	
Pre-milled Blank (Titanium)	◎ (5ea)	Implant Bar	◎
Co-Cr & Ni-Cr Disk	◎	Screw-Retained Bridge (Crown & Coping)	◎
Titanium Disk	◎	Customized Abutment	◎
Lithium Disilicate	○	Hybrid Abutment	◎
Nanocomposite	◎	Inlay & Onlay	◎
Zirconia	◎	Crown & Coping	◎
PMMA	◎	Crown & Coping Bridge	◎
PEEK	◎	Model	◎
Wax	◎	Bite Splint	◎
		Denture	◎

◎: High Compatibility / ○: Compatibility / X: Non-Compatibility

Specifications

Axis	5-Axis	Drive Mechanism	Ball Screw	
Processing	Wet and Dry	Way System	Linear Guide	
Spindle Power	DC 3.0kw	Machine Size (W*D*H)	800*950*940mm	
Max. RPM	60,000	Total Size (W*D*H)	800*950*1760mm	
A.T.C	15	Weight (Machine / Table)	270kg / 135kg	
Tool Shank (mm)	Ø6	Travel	X,Y,Z axis	330*146*145mm
Motor	Servo		A / B axis	360° / ±30°

Tool List

	Code	Size	Code	Size	Code	Size
Basic	ZB-05	D2.0*L20*55	MB-14	D0.6*L03*50	MF-15	D2.0*L18*55
	ZB-06	D1.0*L14*53	MD-18	D1.5*L14*50	MF-45	D1.5*L07*50
	ZB-07	D0.6*L08*50	MD-19	D2.0*L18*55	MF-71	D0.6*L05*50
	MB-09	D3.0*L12*50	DG-21	D1.0*L10*50	MFR-44	D1.5*L05*R0.1*50
	MB-10	D2.0*L12*50	DG-22	D0.6*L08*50	MFR-66	D1.5*L14*50
	MB-11	D1.5*L10*50	DG-37	D2.5*L12*50	MTR-72	M2*P0.4
	MB-12	D1.0*L10*50	DG-38	D1.5*L10*50		
Special	Code	Size	Code	Size	Code	Size
	ZB-01	D2.0*L20*63(Dia)	TC-83	D1.8*L08*50	MR-06	D2.3*L18*55*90°
	ZB-01A	D2.0*L20*63(DLC)	TC-84	D1.5*L08*50	MR-07	D2.3*L18*55*30°
	ZB-02	D1.0*L16*63(Dia)	MD-73	D1.1*L05*50	MR-09	D2.4*L18*55*70°
	ZB-02A	D1.0*L16*63(DLC)	MFR-43	D2.0*L18*R0.2*55	MR-10	D2.6*L18*55*30°
	ZB-03	D0.6*L13*63	MFR_66	D1.5*L14*50	MR-11	D2.4*L18*55*140°
	ZB-04	D0.3*L1.5*63	MTR-74	M1.4*P0.3	MR-12	D2.6*L18*55*90°
	ZB_08	D0.5*L08*50*6°	TH-69	M2.0*P0.4	MR-13	D2.7*L18*55*70°
	ZB-77	D3.0*L20*50	TH-70	M1.4*P0.3	MR-14	D2.3*L18*55*70°
	ZB-78	D0.3*L1.5*50	MR-01	D3.5*L18*55*180°	MR-15	D2.3*L18*55*180°
	MB-67	D1.5*L16*52	MR-02	D2.6*L18*55*180°	MR-16	D2.4*L18*55*90°
TC-82	D2.0*L08*50	MR-05	D2.3*L18*55*120°			

Accessories

				
Disk Cartridge	AT Holder	Attachment	Bushing	Straumann PMAB holder

* Products are subject to change without notice to improve quality, function, design or otherwise.

ARUM 5X-500

The Leader of Middle Class Specialized



Customized Abutment

Titanium

Ni-Cr

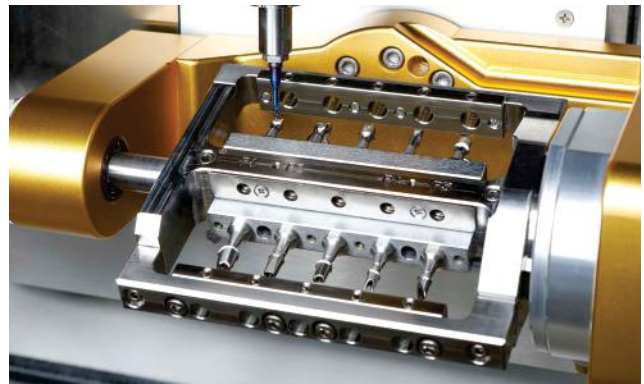
Co-Cr

PMMA

Zirconia

Resin

Wax



Outstanding machining performance

5X-500 is a modal without a loader part. With it you can easily replace 4 types of jigs, which allows you to be able to freely machine from disk to pre-milled blank.



Excellent Precision and Durability

With ZERO Point system, you can achieve excellent origin point precision despite repeated jig replacement, which allows you to machine even complex shape stably. Servo Motor with built-in Absolute Encoder and Auxiliary Support compensates for even fine vibrations.



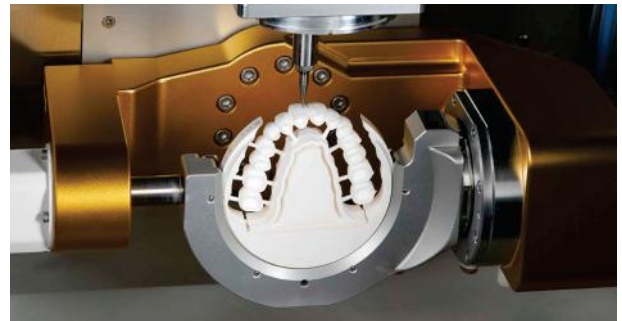
Best-in-class Spindle

With the powerful spindle from Sycotec in Germany, it boasts excellent performance in machining all dental CAD/CAM materials including metal (Co-Cr, Titanium, Ni-Cr)



Labial Side Machining

With Open C Type Jig, you can minimize time spent in precision machining and post-machining of labial (or Buccal) side texture and undercut area.



20
Tool

 Labial

 Occlusal

 Cuff

 All Disk

 CAD Block

Materials & Applications Info.

Materials		Applications	
Pre-milled Blank (Titanium)	⊙ (10ea)	Implant Bar	⊙
Co-Cr & Ni-Cr Disk	○	Screw-Retained Bridge (Crown & Coping)	⊙
Titanium Disk	⊙	Customized Abutment	⊙
Lithium Disilicate	○	Hybrid Abutment	⊙
Nanocomposite	⊙	Inlay & Onlay	⊙
Zirconia	⊙	Crown & Coping	⊙
PMMA	⊙	Crown & Coping Bridge	⊙
PEEK	⊙	Model	⊙
Wax	⊙	Bite Splint	⊙
		Denture	⊙

⊙: High Compatibility / ○: Compatibility / X: Non-Compatibility

Tool List

	Code	Size	Code	Size	Code	Size
Basic	ZB-05	D2.0*L20*55	MB-14	D0.6*L03*50	MF-15	D2.0*L18*55
	ZB-06	D1.0*L14*53	MD-18	D1.5*L14*50	MF-45	D1.5*L07*50
	ZB-07	D0.6*L08*50	MD-19	D2.0*L18*55	MF-71	D0.6*L05*50
	MB-09	D3.0*L12*50	DG-21	D1.0*L10*50	MFR-44	D1.5*L05*R0.1*50
	MB-10	D2.0*L12*50	DG-22	D0.6*L08*50	MFR-66	D1.5*L14*50
	MB-11	D1.5*L10*50	DG-37	D2.5*L12*50	MTR-72	M2*P0.4
	MB-12	D1.0*L10*50	DG-38	D1.5*L10*50		
Special	Code	Size	Code	Size	Code	Size
	ZB-01	D2.0*L20*63(Dia)	TC-83	D1.8*L08*50	MR-06	D2.3*L18*55*90°
	ZB-01A	D2.0*L20*63(DLC)	TC-84	D1.5*L08*50	MR-07	D2.3*L18*55*30°
	ZB-02	D1.0*L16*63(Dia)	MD-73	D1.1*L05*50	MR-09	D2.4*L18*55*70°
	ZB-02A	D1.0*L16*63(DLC)	MFR-43	D2.0*L18*R0.2*55	MR-10	D2.6*L18*55*30°
	ZB-03	D0.6*L13*63	MFR_66	D1.5*L14*50	MR-11	D2.4*L18*55*140°
	ZB-04	D0.3*L1.5*63	MTR-74	M1.4*P0.3	MR-12	D2.6*L18*55*90°
	ZB_08	D0.5*L08*50*6°	TH-69	M2.0*P0.4	MR-13	D2.7*L18*55*70°
	ZB-77	D3.0*L20*50	TH-70	M1.4*P0.3	MR-14	D2.3*L18*55*70°
	ZB-78	D0.3*L1.5*50	MR-01	D3.5*L18*55*180°	MR-15	D2.3*L18*55*180°
	MB-67	D1.5*L16*52	MR-02	D2.6*L18*55*180°	MR-16	D2.4*L18*55*90°
	TC-82	D2.0*L08*50	MR-05	D2.3*L18*55*120°		

Specifications

Axis	5-Axis	Drive Mechanism	Ball Screw	
Processing	Wet and Dry	Way System	Linear Guide	
Spindle Power	AC 2.2kw	Machine Size (W*D*H)	710*910*840mm	
Max. RPM	60,000	Total Size (W*D*H)	710*910*1735mm	
A.T.C	20	Weight (Machine / Table)	230kg / 65kg	
Tool Shank (mm)	Ø6	Travel	X,Y,Z axis	228*128*130mm
Motor	Servo		A / B axis	360° / ±30°

Accessories

			
Premill Jig T Type	Disk Jig	Disk C Type Jig	
			
CAD Block Cartridge	Attachment	Calibration Master & Probe	Straumann PMAB holder

* Products are subject to change without notice to improve quality, function, design or otherwise.

ARUM 5X-450

Faithful Mill for Main Prosthesis



Customized Abutment

Zirconia

PMMA

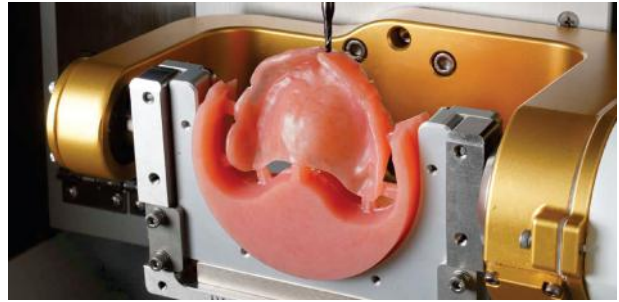
Resin



Milling of various prostheses

With use of open C type cartridge, you can precisely machine Labial Side (Buccal Side) and Under-Cut zone that requires additional machining. With the amazing power of the best-in-class spindle AC 1.28kw, you can machine various shapes and materials such as Denture, Zirconia, CAD Block, and Titanium milled Bar. etc.





C-Type Cartridge

With use of open C type cartridge, you can precisely machine Labial Side (Buccal Side) and Under-Cut zone that requires additional machining.



Excellent Precision Using AT Cartridge

Differentiated round bar machining
You can machine Cuff Side (Gingival area), Occlusal Side, Connectorless, and Retention Groove in simple Top & Bottom Side milling using AT cartridge.



Titanium Disk



Zirconia Crown

Materials & Applications Info.

Materials		Applications	
Pre-milled Blank (Titanium)	⊙ (5ea)	Implant Bar	⊙
Co-Cr & Ni-Cr Disk	X	Screw-Retained Bridge (Crown & Coping)	⊙
Titanium Disk	○	Customized Abutment	⊙
Lithium Disilicate	○	Hybrid Abutment	⊙
Nanocomposite	⊙	Inlay & Onlay	⊙
Zirconia	⊙	Crown & Coping	⊙
PMMA	⊙	Crown & Coping Bridge	⊙
PEEK	⊙	Model	⊙
Wax	⊙	Bite Splint	⊙
		Denture	⊙

⊙: High Compatibility / ○: Compatibility / X: Non-Compatibility

Accessories

		
Disk Cartridge (C-Type)	AT Holder	AT Cartridge
		
CAD Block Cartridge	Attachment	Straumann PMAB holder

Specifications

Axis	5-Axis	Drive Mechanism	Ball Screw	
Processing	Wet and Dry	Way System	Linear Guide	
Spindle Power	AC 1.28kw	Machine Size (W*D*H)	790*790*790mm	
Max. RPM	60,000	Total Size (W*D*H)	790*790*1645mm	
A.T.C	15	Weight (Machine / Table)	185kg / 65kg	
Tool Shank (mm)	Ø6	Travel	X,Y,Z axis	245*116*130mm
Motor	Stepping		A / B axis	360° / ±35°

Tool List

	Code	Size	Code	Size	Code	Size
Basic	ZB-05	D2.0*L20*55	MB-14	D0.6*L03*50	MF-15	D2.0*L18*55
	ZB-06	D1.0*L14*53	MD-18	D1.5*L14*50	MF-45	D1.5*L07*50
	ZB-07	D0.6*L08*50	MD-19	D2.0*L18*55	MF-71	D0.6*L05*50
	MB-09	D3.0*L12*50	DG-21	D1.0*L10*50	MFR-44	D1.5*L05*R0.1*50
	MB-10	D2.0*L12*50	DG-22	D0.6*L08*50	MFR-66	D1.5*L14*50
	MB-11	D1.5*L10*50	DG-37	D2.5*L12*50	MTR-72	M2*P0.4
	MB-12	D1.0*L10*50	DG-38	D1.5*L10*50		
Special	Code	Size	Code	Size	Code	Size
	ZB-01	D2.0*L20*63(Dia)	TC-83	D1.8*L08*50	MR-06	D2.3*L18*55*90°
	ZB-01A	D2.0*L20*63(DLC)	TC-84	D1.5*L08*50	MR-07	D2.3*L18*55*30°
	ZB-02	D1.0*L16*63(Dia)	MD-73	D1.1*L05*50	MR-09	D2.4*L18*55*70°
	ZB-02A	D1.0*L16*63(DLC)	MFR-43	D2.0*L18*R0.2*55	MR-10	D2.6*L18*55*30°
	ZB-03	D0.6*L13*63	MFR_66	D1.5*L14*50	MR-11	D2.4*L18*55*140°
	ZB-04	D0.3*L1.5*63	MTR-74	M1.4*P0.3	MR-12	D2.6*L18*55*90°
	ZB_08	D0.5*L08*50*6°	TH-69	M2.0*P0.4	MR-13	D2.7*L18*55*70°
	ZB-77	D3.0*L20*50	TH-70	M1.4*P0.3	MR-14	D2.3*L18*55*70°
	ZB-78	D0.3*L1.5*50	MR-01	D3.5*L18*55*180°	MR-15	D2.3*L18*55*180°
	MB-67	D1.5*L16*52	MR-02	D2.6*L18*55*180°	MR-16	D2.4*L18*55*90°
	TC-82	D2.0*L08*50	MR-05	D2.3*L18*55*120°		

* Products are subject to change without notice to improve quality, function, design or otherwise.

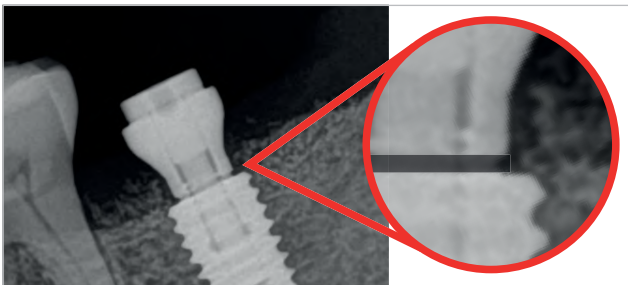
Intraoral Scanbody

- Raw Material Ti 6Al-4V ELI (ASTM F 136) Supplied by Germany
- Accurate tightening indicator "A Line"
- Easy and fast scan data matching
- Minimal gingival pressure and securement of gingiva
- Supports with the industry's largest number of implant systems and libraries



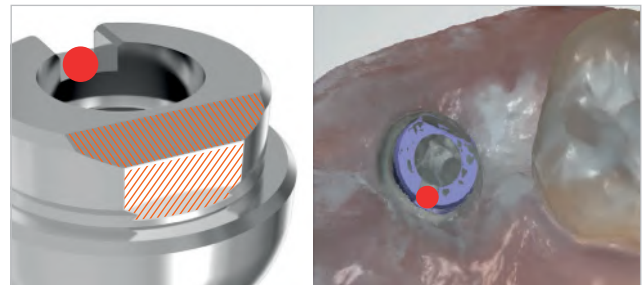
A Line

Indexes for the accurate fastening of implant fixtures and oral scan bodies and the prevention of the rotation of customized abutments.



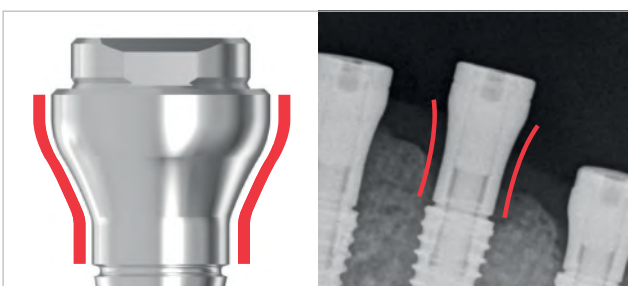
Easy and accurate matching

Easy and accurate scan data and library matching by nuts, D-cut and slope.



Concave Line

Concave Line to increase the completeness of dental procedure.
Minimization of gingival pressure
Securement of thick gingiva



Intraoral Scanbody Holder

Easy connect to fixture with intraoral scanbody holder
It is good for the complex case like molar procedure.
Possibility to select a suitable size with each different oral cavity



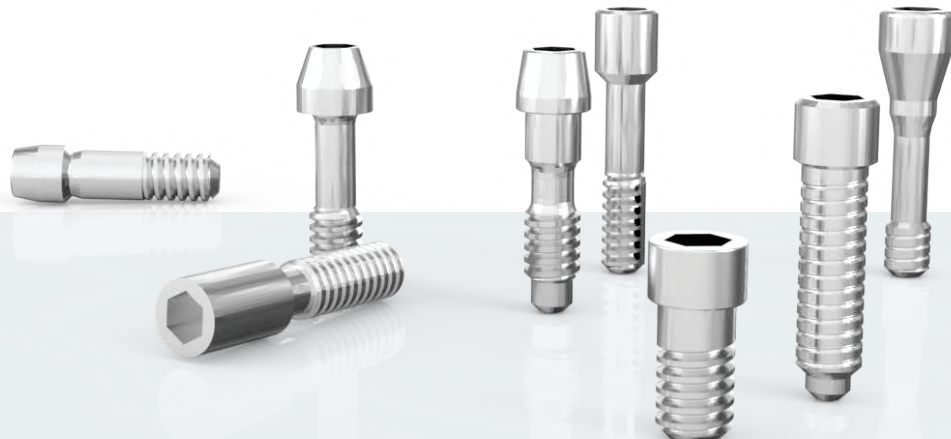
Model Scanbody

- Raw Material Stainless Steel 303F
- Industry's largest library
- Industry's largest implant system compatibility



Screw

- Raw Material Ti 6Al-4V ELI (ASTM F 136) Supplied by Germany
- All hand inspection of thread
- Industry's largest implant system compatibility



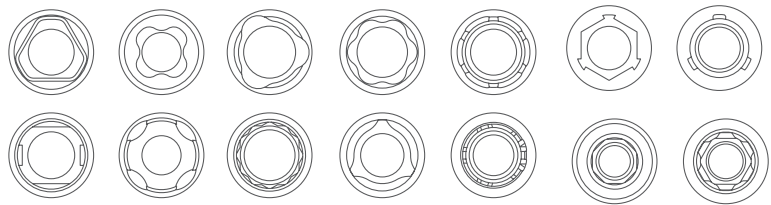
Pre-milled Blank

- Raw Material Ti 6Al-4V ELI (ASTM F 136) Supplied by Germany
- Industry's largest implant system compatibility
- Securement of quality through full-scale inspection
- Precision machined up to $\pm 5\mu\text{m}$



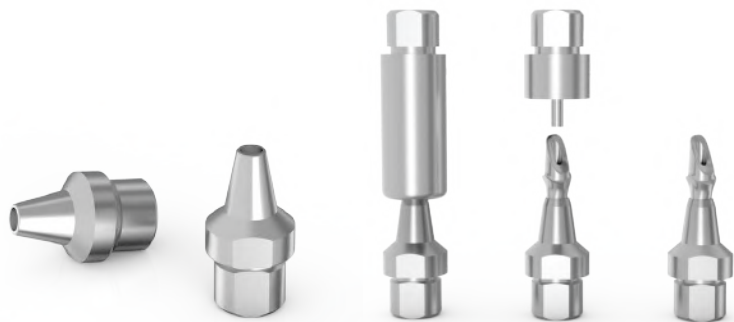
Diameter 10,14mm

We provide diameter of 10 and 14 mm for you to make Customized Abutments appropriate for various conditions of teeth. As they are compatible with more than 500 implant systems, you can machine using ARUM equipment.



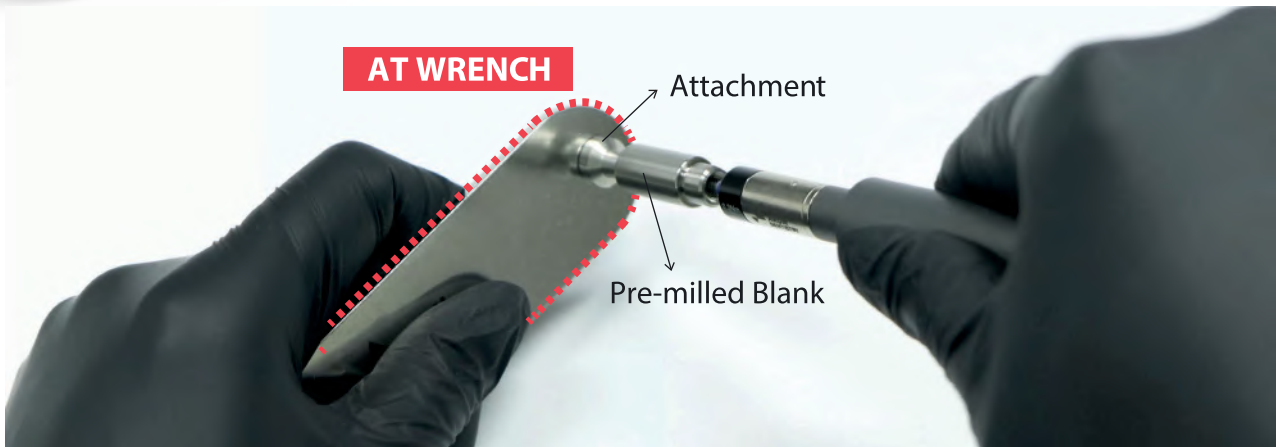
Attachment

With use of Attachment, you can machine more sophisticated and near-perfect Customized Abutment.



AT Wrench

- Easy to use and storage
- Compatible with all ARUM Attachments
- Stainless Steel 304
- 120mm*30mm*3mm / 76g



Use case



5X-500L / 5X-500



5X-450

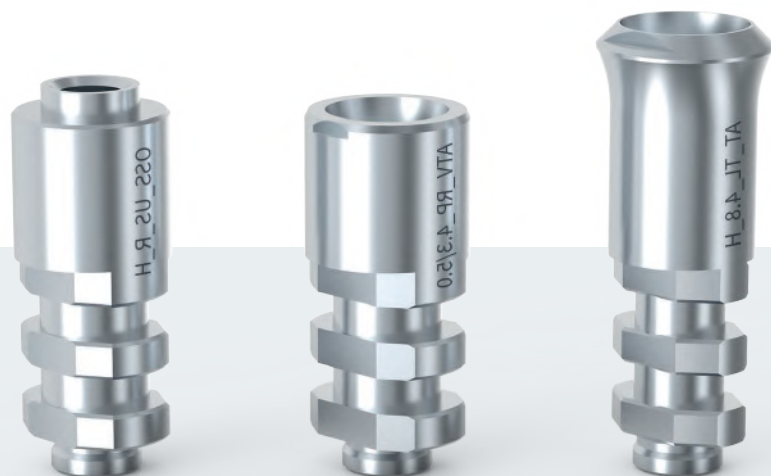
Ti-Base

- Raw Material Ti 6Al-4V ELI (ASTM F 136) Supplied by Germany
- Industry's largest implant system compatibility
- Superior level of biocompatibility
- Combination of high fatigue strength



Analog

- Raw Material Stainless Steel 303F
- Industry's largest implant system compatibility
- Precision machined up to $\pm 5\mu\text{m}$
- For 3D print & stone model



Lab Driver



Screw Driver Tips

- Place the model scanbody and the abutment
- 10 types of tips (compatible with more than 300 implants system)



Analog Insertion Tips

- Place the lab analog to 3D printed model
- Easy and safe to place the lab analog
- Prevent damage of the lab analog internal thread
- 5 types of tips (compatible with more than 300 implants system)










Torque Adapter

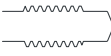
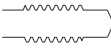
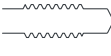
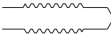
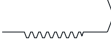
- For clamping Attachment and Premill for connectorless milling
- Prevent screw loosening during milling



Screw Driver Tips Line-Up

SIZE	COLOR	Compatible Implant System
 Hex 1.0	Blue	DENTSPLY Ankylos C/X Implant, etc.
 Hex 1.2	Purple	BIOMET 3i Certain, BIOMET 3i EXTERNAL HEX, DENTIS i-Clean, DENTSPLY Xive, DIO UF, MEGAGEN AnyONE, MEGAGEN Anyridge, NEOBIOTECH, OSSTEM GS(TS), OSSTEM SS, OSSTEM US, SIC Invent, etc.
 Hex 1.25	Black	BEGO Semados, BIOHORIZONS External, BIOHORIZONS Internal, DENTIS s-Clean, LASAK Bioniq, etc.
 Hex 1.27	Red	ALPHABIOTEC Internal Hex, ANTHOGRYR axiom, ASTRA TECH OsseoSpeed TX, CAMLOG, DENTIUM Super-Line, IMPLANT DIRECT Legacy, MIS C1, MIS Internal Hexagon, ZIMMER Tapered Screw-Vent, etc.
 Hex 1.3	Green	ASTRA TECH OsseoSpeed EV, CLC Conic, DYNA Pushin Octalock, KENTEC, PLATON, Type IV Pro, Sweden & Martina, etc.
 Torx 1.7	Brown	STRAUMANN Bone Level, STRAUMANN Conical Bone Level, STRAUMANN synOcta, etc.
 Torx 1.5 (Star)	Yellow	ADIN CLOSEFIT, NOBEL BIOCARE Active, NOBEL BIOCARE Branemark, NOBEL BIOCARE Replace Select, etc.
 Cross	Gray	THOMMEN SPI, etc.
 Ball Torx	Orange	1. Most of angled screws of ARUM Ti-base (screw head size is more than 2.1mm) 2. All implant system for disk angulated screw channels
 Ball Hex	White	Some of angled screws of ARUM Ti-base (screw head size is less than 2.1mm) *Please contact us for a separate list.

Analog Insertion Tips Line-Up



SIZE	COLOR	Compatible Implant System
 M2.0*P0.40	Cocoa	Osstem GS Regular, Dentium Super line, Megagen Anyone, Dentis S-clean, Straumann Tissue level, etc.
 M1.8*P0.35	Light Green	Zimmer TSV, Megagen Anyridge, Biohorizon Internal, Bego Semados, etc.
 M1.6*P0.35	Pink	Straumann Bone level, Osstem GS Mini, Nobel biocare Active Mini, Dentsply Xive, Neodent GM, etc.
 M1.4*P0.30	Sky Blue	Straumann Bone level 2.9, Dio UF Narrow, Megagen Mini, Astra Yellow Most of Multi unit, etc.
 M2.5*P0.45	Ivory	Osstem US Wide, Nobel biocare Branemark WP, etc.

** Aware of the color of analog tip
** Contact us for a complete list of implant compatibility









Clinical Driver

- Use of Trimrite with excellent corrosion resistance
- Easy and simple cleaning
- For angle screw channels
- Heat treatment and hardness of 50 or more




Size	Length	Order Code	Implant System	Recommend Torque
 Ball Torx	22mm	BT1722	1. Most of angled screws of ARUM Ti-Base (screw head size is more than 2.1mm) 2. All implant system for disk angulated screw channels	20 Ncm
	15mm	BT1715		
	8mm	BT1708		
 Ball Hex	22mm	BH1222	Some of angled screws of ARUM Ti-Base (screw head size is less than 2.1mm) *Please contact us for a separate list.	20 Ncm
	15mm	BH1215		
	8mm	BH1208		









Consumable Line-up

ARUM Product List													
No	ARUM System	Compatibility Implant System	Screw	Analog	Ti-Base		Model Scanbody	Intraoral Scanbody	Pre-milled Blank 10mm		Pre-milled Blank 14mm		Attach
					H	NH			H	NH	H	NH	
0	ARUM	ARUM DENTISTRY® NB I / NB II	○	○	○	○	○	○	○	○	○	○	
1	AD-CLOS	ADIN® CLOSEFIT™	○	○	○	○	○		○	○			
2	AD-TOU	ADIN® TOUAREG™ S&OS	○	○	○	○	○		○		○		
3	AB-IH	ALPHABIOTEC® Internal Hex	○	○	○	○	○	○			○		
4	AN	ANTHOGRYR®	○	○	○	○	○		○		○		○
5	AT-EV	ASTRA TECH™ OsseoSpeed™ EV	○	○	○	○	○		○		○		○
6	AT-EVPRO	ASTRA TECH™ OsseoSpeed™ Profile EV					○						
7	AT-OSS	ASTRA TECH™ OsseoSpeed™ TX	○	○	○	○	○	○	○	○	○	○	○
8	BEG	BEGO Semados®	○	○	○	○	○		○	○	○		○
9	BIC	BICON® Integra-CP™		○		○	○			○		○	
10	BD-BL	biodenta® Bone Level	○	○			○		○				
11	BH-EXT	BIOHORIZONS® External®	○	○	○	○	○		○	○			○
12	BH-INT	BIOHORIZONS® Internal®	○	○	○	○	○	○	○	○	○		○
13	BM3I-INT	BIOMET 3i® Certain®	○	○	○	○	○		○		○		○
14	BM3I-EXT	BIOMET 3i® EXTERNAL HEX CINNECTION	○	○	○	○	○		○	○	○		○
15	BT-BIK	BIOTECH DENTAL® KONTACT® / KONTACT S®	○	○	○	○	○		○	○			○
16	BB-MYT	BrainBase Corporation® MYTIS Arrow Implant	○				○		○				
17	BRM-SK	BREDDENT Medical SKY®	○	○	○	○	○		○				○
18	BT-INT	BTI INTERNAL®	○	○	○		○		○				○
19	CAM	CAMLOG®	○	○	○	○	○		○		○		○
20	CON	CAMLOG® CONELOG®	○	○	○	○	○	○			○		○
21	CL-CON	CLC Conic	○				○		○				
22	CRT	CORTEX®	○	○	○		○		○		○		
23	CWM-INT	COWELLMEDI® INNO Internal	○	○	○	○	○		○				
24	CTE-EST	C-TECH® Esthetic Line	○	○	○	○	○		○		○		

ARUM Product List

No	ARUM System	Compatibility Implant System											
			Screw	Analog	Ti-Base		Model Scanbody	Intraoral Scanbody	Pre-milled Blank 10mm		Pre-milled Blank 14mm		Attach
					H	NH			H	NH	H	NH	
25	DP	DEEP®	○	○	○	○	○		○	○			
26	DR-TIO	Dentaurum tioLogic®	○		○		○		○				
27	DTS-ICL	DENTIS® i-Clean	○	○	○	○	○	○	○		○	○	
28	DTS-SCL	DENTIS® s-Clean	○	○	○	○	○		○	○	○	○	
29	DTM-NR	DENTIUM® NR Line	○	○	○	○	○		○				
30	DTM-SIM	DENTIUM® SimpleLine	○	○	○	○	○		○				
31	DTM-SPL	DENTIUM® SuperLine	○	○	○	○	○	○	○	○	○	○	
32	DS-XIV	DENTSPLY® Xive®	○	○	○	○	○		○		○		○
33	DS-ANK	DENTSPLY® Ankylos® C/X Implant	○	○	○	○	○		○	○	○	○	
34	DO-SM	DIO® SM	○	○	○	○	○		○		○		
35	DO-UF	DIO® UF	○	○	○	○	○	○	○	○	○	○	○
36	DO-UFT	DIO® UF(II) Internal Non Submerged	○				○		○				○
37	DYN-PUS	DYNA Pushin Octalock®	○	○	○		○		○				
38	EB	EBI®	○				○		○	○	○	○	
39	GLD-TEK	Global D® Tekka® In-Kone	○	○	○	○	○		○		○		
40	HMT-RA	HumanTech RATIO	○				○		○				
41	ID-LEG	IMPLANT DIRECT® Legacy™	○	○	○	○	○		○		○	○	○
42	IL-GB	INTRA-LOCK® GOLD&BLUET™	○	○			○	○	○				○
43	KENT	KENTEC®	○	○	○		○		○				
44	KS-PRI	KEYSTONE Prima Connex®	○	○	○		○		○		○		○
45	KYO-PO	KYOCERA POIEX	○	○	○	○	○		○		○		
46	KYO-FBL	KYOCERA FINESIA® Bone Level	○				○		○				
47	KYO-FTL	KYOCERA FINESIA® Tissue Level	○				○		○				
48	LSK-BIO	LASAK Bioniq®	○	○	○	○	○		○		○		○
49	MM-IC	Medentis Medical® ICX	○	○	○	○	○	○	○		○		○

Consumable Line-up

ARUM Product List													
No	ARUM System	Compatibility Implant System	Screw	Analog	Ti-Base		Model Scanbody	Intraoral Scanbody	Pre-milled Blank 10mm		Pre-milled Blank 14mm		Attach
					H	NH			H	NH	H	NH	
50	MEG	MEGAGEN®	○	○	○	○	○		○		○		
51	MEG-ONE	MEGAGEN® AnyONE	○	○	○	○	○	○	○	○	○	○	○
52	MEG-RID	MEGAGEN® Anyridge®	○	○	○	○	○		○	○	○		○
53	MEG-EEP	MEGAGEN® Anyridge® Extra EZ POST	○				○		○	○			
54	MEG-EZP	MEGAGEN® EZ Plus	○	○	○	○	○		○	○	○	○	○
55	MEG-RES	MEGAGEN® Rescue	○	○	○	○	○		○	○	○	○	○
56	MS-C	MIS® C1	○	○	○	○	○		○				○
57	MS-INT	MIS® Internal Hexagon	○	○	○		○	○			○		○
58	NEB	NEOBIOTECH®	○	○	○	○	○	○	○	○	○		
59	NED	NEODENT® CM Implant Line	○	○	○		○		○				
60	NED-GM	NEODENT® GM	○	○	○	○	○	○					○
61	NOS-PA	NEOSS Pro Active®	○	○	○	○	○		○		○		○
62	NB-ACT	NOBEL BIO CARE® Active™	○	○	○	○	○	○			○		○
63	NB-BRA	NOBEL BIO CARE® Branemark®	○	○	○	○	○		○		○		○
64	NB-REP	NOBEL BIO CARE® Replace Select™	○	○	○	○	○		○		○		○
65	NCOS	NucleOSS	○		○		○		○				
66	OST-GS	OSSTEM® GS(TS)	○	○	○	○	○	○	○	○	○	○	○
67	OST-SS	OSSTEM® SS	○	○	○	○	○		○	○	○		○
68	OST-US	OSSTEM® US	○	○	○	○	○	○			○		○
69	PLT-IV	PLATON® Type IV Pro	○				○		○				
70	SHN	SHINHUNG®	○	○			○		○				
71	SC-INV	SIC Invent®	○	○	○		○		○		○		○
72	SI-MSC	SOUTHERN IMPLANT MSc EXTERNAL HEX	○	○	○	○	○		○	○			
73	SI-INT	SOUTHERN IMPLANTS M-Series (Internal Hex)	○	○			○						
74	STR-BL	STRAUMANN® Bone Level®	○	○	○	○	○	○	○	○	○		○

ARUM Product List

No	ARUM System	Compatibility Implant System											
			Screw	Analog	Ti-Base		Model Scanbody	Intraoral Scanbody	Pre-milled Blank 10mm		Pre-milled Blank 14mm		Attach
					H	NH			H	NH	H	NH	
75	STR-CBL	STRAUMANN® Conical Bone Level®	○	○	○	○	○		○	○			
76	STR-TL	STRAUMANN® synOcta®	○	○	○	○	○		○	○	○	○	
77	SM	Swedn&Martina	○	○	○		○		○				○
78	THO-SPI	THOMMEN SPI®	○	○	○		○		○		○		○
79	WAR-ONE	WARANTEC® Oneplant	○	○	○	○	○		○		○		
80	ZMR	ZIMMER®	○	○	○	○	○		○		○	○	○
81	ZMR-SPA	ZIMMER® Spline A	○	○			○		○				
82	ZMR-SPB	ZIMMER® Spline B	○	○		○	○		○		○		
83	ZMR-TSV	ZIMMER® Tapered Screw-Vent®	○	○	○	○	○	○	○	○	○	○	○

* Products are subject to change without notice to improve quality, function, design or otherwise.



WHERE TRUST COMES FIRST



Partnering with Dentists for over two decades
creating a world full of healthy smiles together.

For any Sales & Support

 8527700805, 9717892258

 cadcamcrm@unicorndenmart.com



SCAN TO VISIT OUR WEBSITE



Corporate Office: 3 Local Shopping Centre, MOR Land, Near J Block
DDA Market, New Rajender Nagar, New Delhi – 110060

