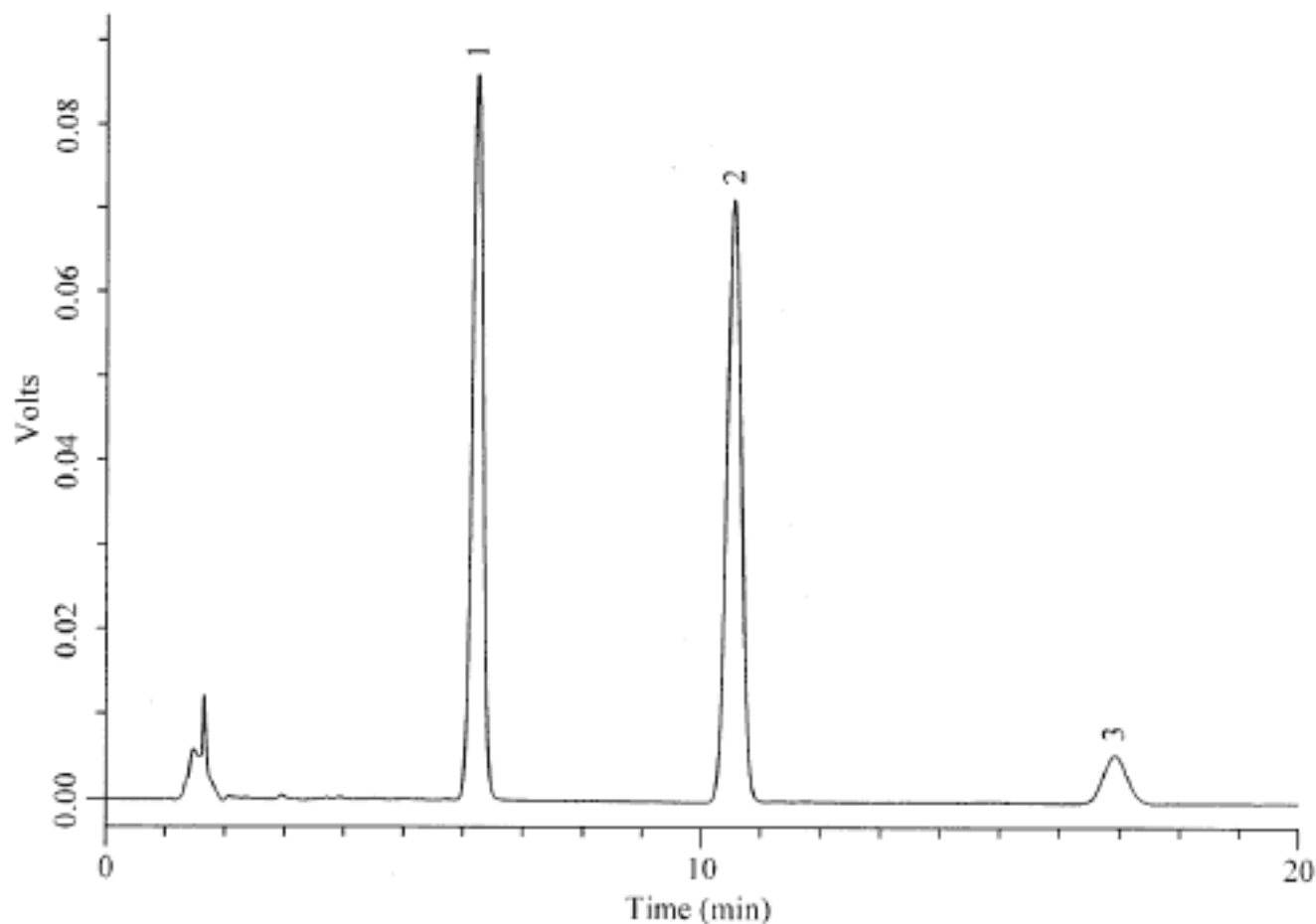


Analysis of Alprostadil

Data No. LA184-0000



Column	: Inertsil ODS-3V 5 μ m 150 \times 4.6mm I.D.	Solutes	: 1. Alprostadil (Prostaglandin E1)(200 μ g/mL) 2. n-Propyl paraben(22 μ g/mL) 3. Prostaglandin A1(5 μ g/mL)
--------	---	---------	--

Column Cat. No. :

Eluent : CH₃CN/20mM KH₂PO₄=40/60

Flow rate : 1.0 mL/min.

Col. Temp. : 25°C

Detection : UV 205 nm

Injection Vol. : 10 μ L

Sample : 1. Alprostadil (Prostaglandin E1)(200 μ g/mL)
2. n-Propyl paraben(22 μ g/mL)
3. Prostaglandin A1(5 μ g/mL)