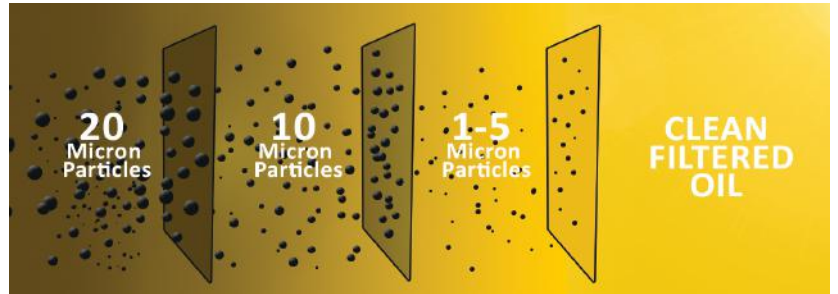


## Oil Filtration System

Minimac's FS series oil filtration systems are high-end technology machines popularly used for superfine stage filtration (fine solid particle removal) of lubricating and hydraulic oils. These are externally attached, independently operating by-pass oil purifying machines.



### Technology: Stagewise Mechanical Filtration



[Watch Video](#)

[Product Details](#)

[Read Article](#)



**Minimac Systems Pvt. Ltd.**  
GST No: 27AAICM4730E1ZL

☎ 1800 1209 003 ✉ enquiry@minimac.in  
🌐 www.minimacsystems.com

Gat No 448/15, Success Industrial Park Nighoje, Khed, Chakan, Pune, Maharashtra 410501

## Why Oil Purification Important

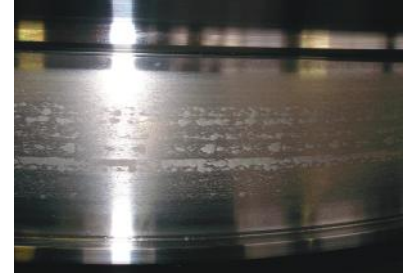
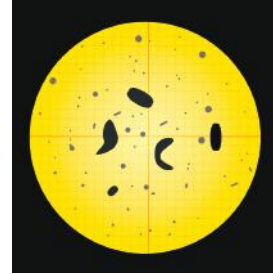
Metallic wear particles (of < 5 micron size) are generated by a lubrication system itself during its operation. Metallic wear particles are highly abrasive in nature

Increase of wear particles is highly damaging to machine components.

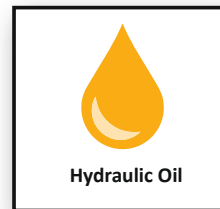
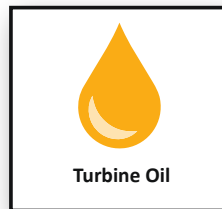
Wear particles typically cause 50% of all failures.

These multiply due to wear and tear of surfaces of machine components.

The most harmful particles are the ones trapped in the dynamic tolerance like in bearings.



## Types of fluid which can be cleaned



## Nomenclature - Model No. FS -

T1

T2

T3

T4

T1	Pump Flow Rate (LPM)	Filtration Capacity (LPM)
5 LPM	5 LPM	5 LPM
10 LPM	10 LPM	10 LPM
20 LPM	20 LPM	20 LPM
40 LPM	40 LPM	40 LPM
60 LPM	60 LPM	60 LPM
80 LPM	80 LPM	80 LPM
100 LPM	100 LPM	100 LPM
150 LPM	150 LPM	150 LPM
200 LPM	200 LPM	200 LPM

T2	No. of Filtration Stages Present
1S	1 stage filtration
2S	2 stage filtration
3S	3 stage filtration

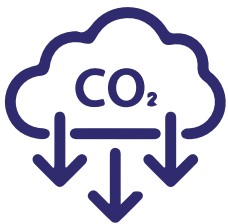
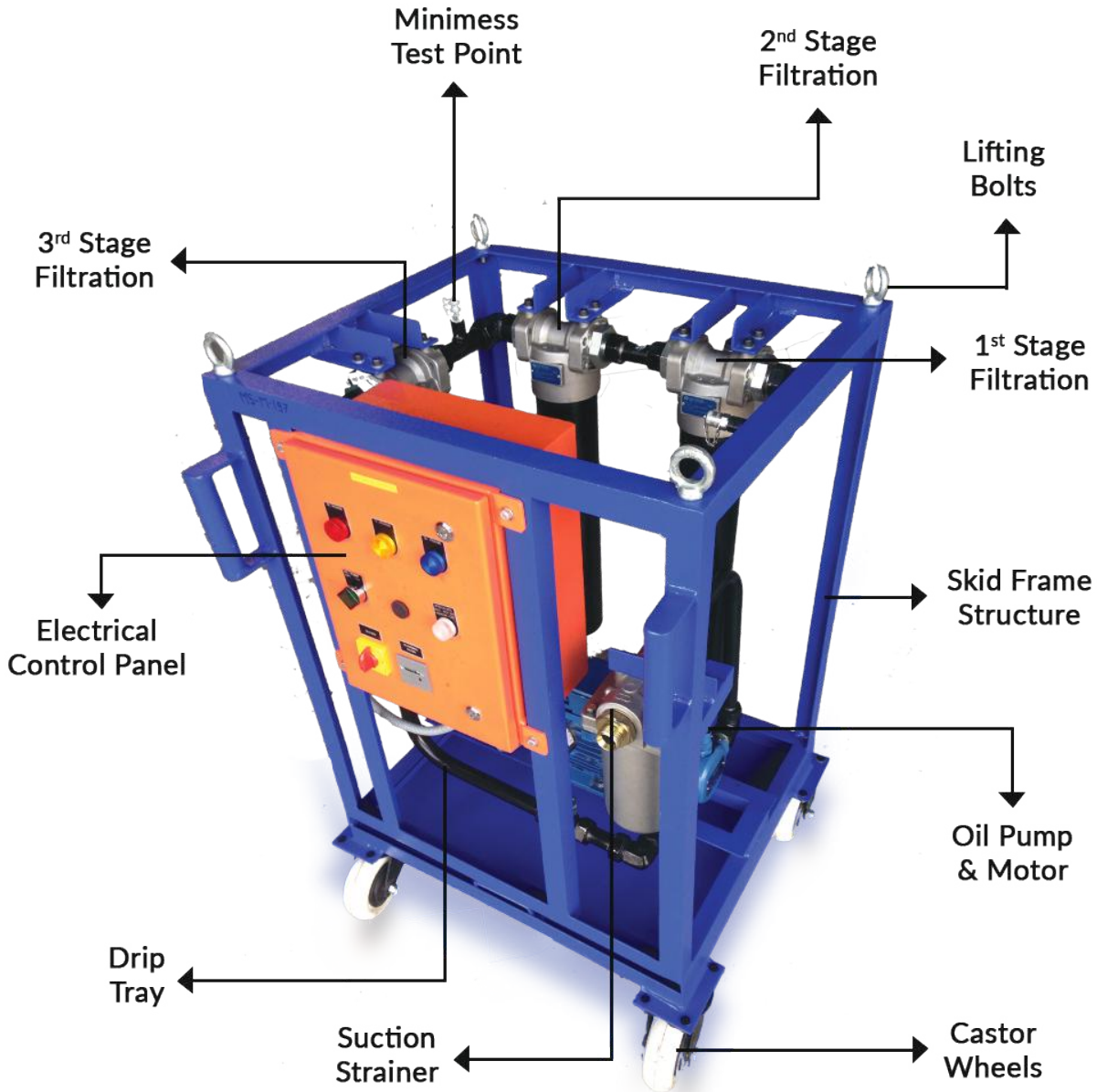
T3	Fluid Type
H	Hydraulic Oil & Lube Oil (upto 220 cSt)
G	Gear Oil (320 cSt & above)
FRF	Synthetic Fluid - FRF (Phosphate Ester)
WG	Water Glycol

T4	Filter Clogging Indications
V	1 stage filtration
E	Electrical Indication

For customizations please contact Minimac® Sales Representative.

All specifications and configurations are indicative and should be verified with Minimac® Sales Office prior to ordering

**Features**



**REDUCE YOUR  
CARBON FOOTPRINT**

## Specifications

<b>Installation Scheme</b>	Trolley Mounted, Portable Machine
<b>Working</b>	Online / Offline. Fitted externally to oil reservoir as a by-pass oil purification system
<b>Operational Principle</b>	Stage Filtration of reducing microns Filters : The filters used in this skid are made of inorganic fiber glass impregnated media in pleated form for better filtration area. The choice of filter rating and size is done to ensure best filter life, efficiency and performance.
<b>Benefits</b> Filtration Capacity Oil Viscosity handled Oil Types handled Prevents oil oxidation Ensures Higher Oil Life Prevents Valve Failures Prevent Pump Failures Increases bearing life	for gear oil NAS $\geq 7$ , for other oil NAS $\leq 4$ 0 – 680 cSt. For higher viscosities customized model to be ordered Hydraulic, Lube, Turbine Oil, Gear Oil, FRFs (Phosphate Esters) By removal of solid particles in oil By retaining Viscosity, TBN, Flash Point, Additive level etc. Due to removal of sticky sludge Due to removal of micron particles Due to moisture & sludge free oil
<b>Oil Flow Systems</b> Oil in-take / delivery system	Gear Type Monobloc / coupled Pump
<b>Filtration Stages</b> Suction line Strainer 1 <sup>st</sup> Stage Filter 2 <sup>nd</sup> Stage Filter 3 <sup>rd</sup> Stage Filter	149 micron (SS mesh type) 25 micron (SS mesh) or 16 / 10 micron (fiber glass, Pleated type) 6 micron (European media - fiber glass, Pleated type) 3 micron (European media - fiber glass, Pleated type)
<b>Oil Drive Systems</b> Pump Motor	20 LPM / 40 LPM / 60 LPM / 80 LPM / 150 LPM / 200 LPM Gear Type 415 V, 3 Phase, 1500 RPM (standard). Other options & flameproof options on request
<b>Electrical Controls</b> Dry Run Protection Overload pump protection Supply Protections Flameproof options	Yes (Optional) Yes (Optional) RCCB / ELCB based (Optional) Optional. Available on request & as per requirement
<b>Indications</b> Oil Pressure Suction Filter Clog Stage Depth Filters Clog Lamp Indications	0 - 15 bar Visual Based or Vacuum Switch Based Visual Based or DP Switch Based Phase, Pumps Operation, Filter Clogging (optional).
<b>Hose Pipes</b> Suction Pipe Delivery Pipe	3 m hydraulic hose pipe (Rubber / PTFE) 3 m hydraulic hose pipe (Rubber / PTFE)
<b>Electrical Cable</b>	10 m, 4 core
<b>Fabrication Structure</b>	MS (powder coated) structure frame Castor Wheels with swivel, bearing and pad brakes