

# Lola

IT'S ABOUT WHAT COMES AFTER.



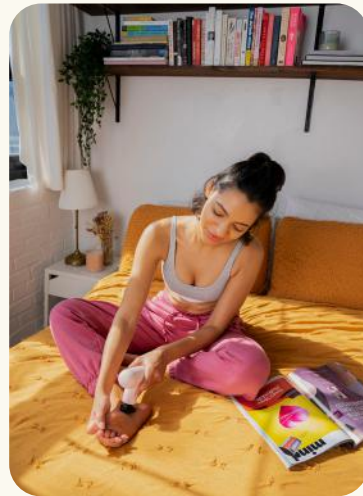


MEET LOLA.

In a lot of ways, Lola is just like the women we know: powerful, graceful, strong, beautiful.

Lola is a massage gun for women who are serious about their training, and their relaxation too.

The massage gun market is dominated by heavy, bulky massage tools aimed at men, that are often cumbersome and unweildy in women's hands.



Lola is different. Lightweight and pocket-sized, but just as powerful and effective as the market-leading technology.





## The Lola woman works hard, plays hard and has time to fit in self-care routines too...

She's often commuting or fitting in other responsibilities alongside her training, which is why Lola's size matters - the same size as an iPhone and ultra lightweight, Lola is perfect to carry in a handbag or gym bag.

She's busy, which is why Lola's efficiency matters - rapid charging, a long battery life and ultra-quiet performance means she can relax and recover on the go.

She's stylish, which is why Lola's looks matter - slimline, elegant and effortlessly modern looking, Lola fits right in with her other technology and accessories.





Lola can be used  
in lots of ways:



To prevent post-exercise soreness and speed up muscle recovery after a workout.



To prevent and break up muscular adhesions (or 'knots'), relieving pain and keeping you moving.



To effectively warm up your muscles before exercise.



To relax, unwind, and have fun at the end of the day, cosy on the sofa while watching TV.



To relieve tension and stiffness after long workdays and travel, reducing the sensations of fatigue and jet lag.



On holiday or while travelling, thanks to its light weight and compact size.



4 interchangeable heads and four massage speeds (up to 3000rpm).

---

Fast-charging lithium battery (Type C, 2000mAh), powering 3-7 hours of massage. Use Lola for 10 minutes every day for 60 days without needing to charge.

---

Automatic power-off after 15 minutes of inactivity.

---

Smaller than an iPhone and easily held in one hand.

---

Weighs > 500 grams, and can withstand up to 3kg of force.

---

Operating volume of 45dB, quieter than a regular rotary fan.

---



Four interchangeable attachments, for different massage techniques.

Flat Attachment



Smoothly massage flat major muscle groups, for example on the back and chest.

U-Shaped Attachment



Targeted massage for narrower parts of the body, such as the neck as well as the ankles and calf muscles.

Cone Attachment



A percussion-style technique for deeper massage, perfect at acupressure points.

Ball Attachment



Gently massage soft tissues and more sensitive areas for relaxation.



## Four interchangeable speeds for different results.

### FIRST GEAR :

At 1400rpm, this speed is designed to arouse and warm up muscle tissue - perfect before a workout.

---

### SECOND GEAR:

At 2000rpm, this speed operates at fascia level, releasing tension, knots and promoting relaxation.

---

### THIRD GEAR:

Get deeper into the muscles to prevent soreness after exercise and decrease inflammation.

---

### FOURTH GEAR:

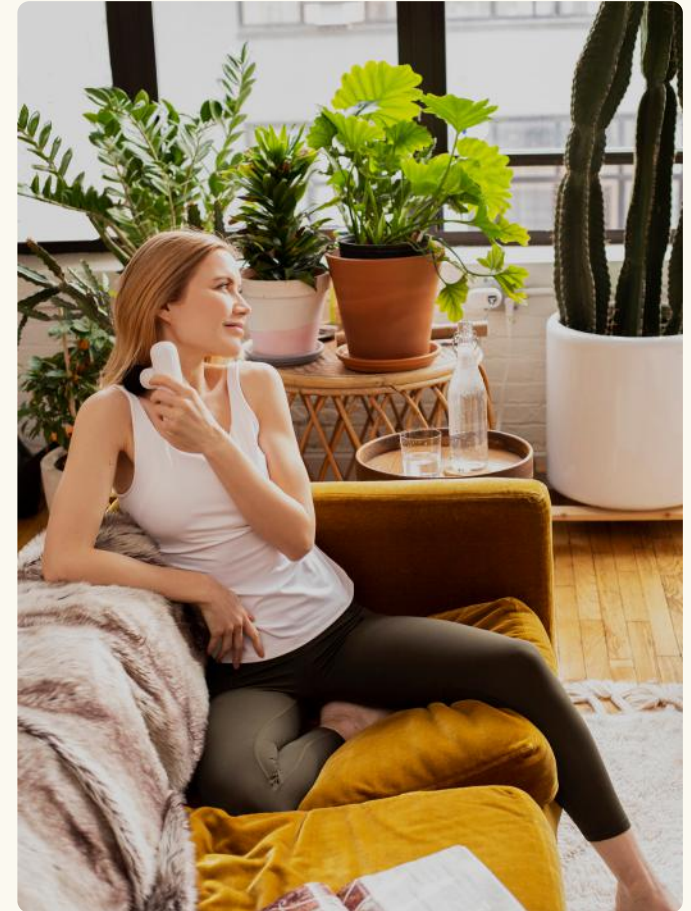
Step it up to a professional sports-massage level with the fastest speed.

---





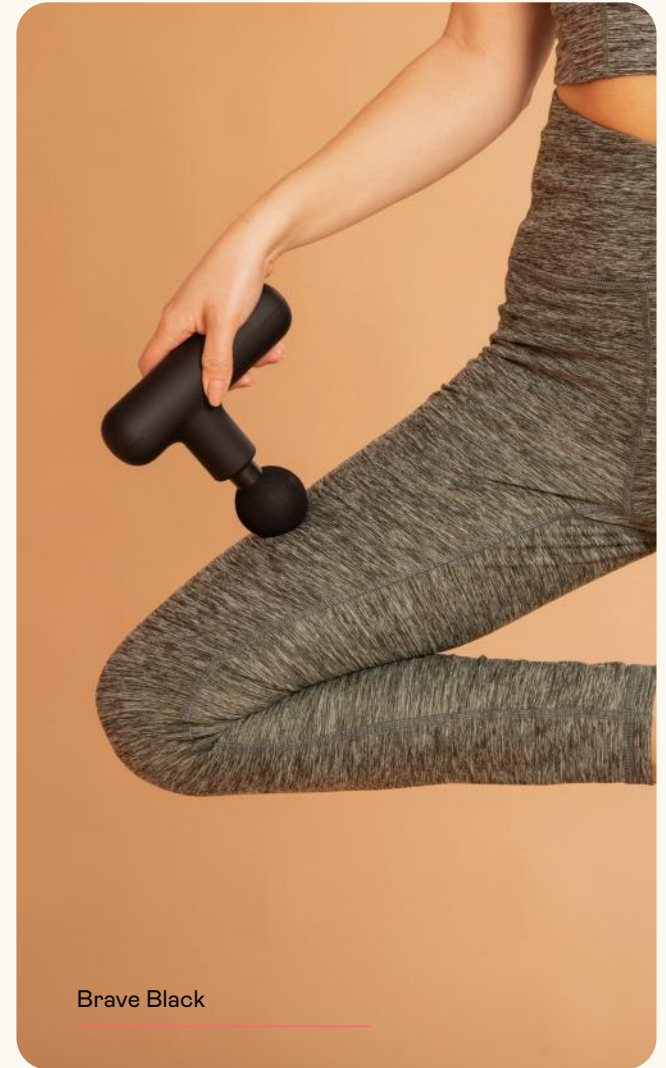
	 THERAGUN MINI	 LOLA
SPEED SETTINGS	3	4
WEIGHT	1.43IBS (650G)	0.95IBS (453G)
HEADS INCLUDED	1	4
BATTERY LIFE	150 MINUTES	150 MINUTES
RAX RPM	2400	3000
DIMENSION	6 IN X 5.3 IN X 2.25 IN 15.2CM X 13.5CM X 7.7CM	6.29 IN X 3.54 IN X 1.88 IN 16CM X 9CM X 4.8CM







AVAILABLE COLOURS. MSRP - £ 8 9 / € 9 9





Lavender Blush

Mint Cream



Peach Crayola



Dusty Rose



Lemon Chiffon



# Lola

THANK YOU.

