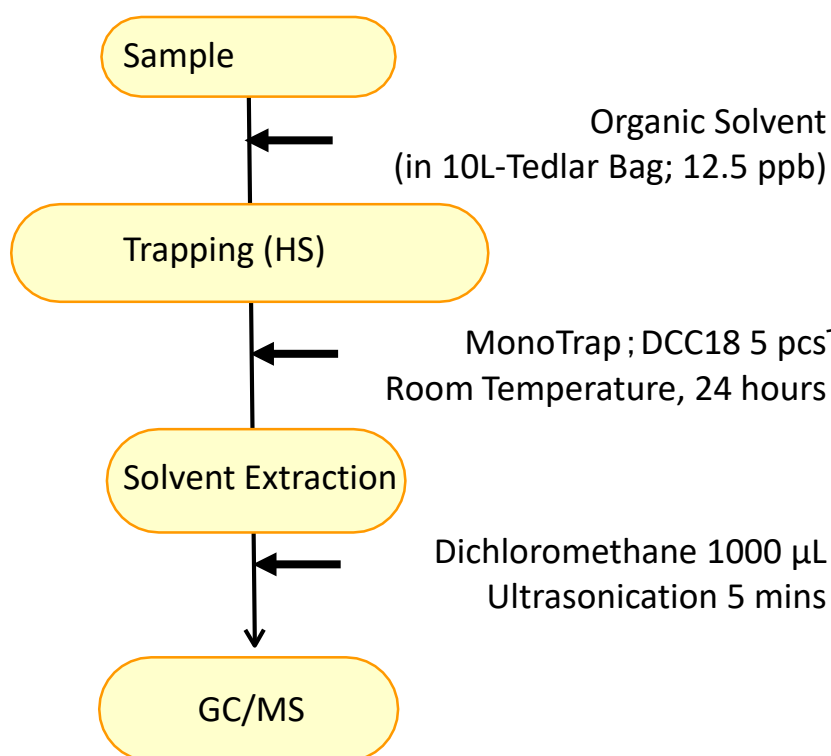


# Analysis of Organic Solvent in Atmosphere with MonoTrap

MonoTrap is a hybrid novel adsorbent that combines a large surface area and the properties of silica gel, activated carbon, and ODS. Utilizing the surface of porous silica, it can be used as a tool that makes use of the large surface area and the adsorbent effect caused by the inclusion of activated carbon for high collection efficiency and for short time and sensitive analysis. This time, we used MonoTrap DCC18 (with activated carbon) to recover aerial organic solvents. The effects of activated carbon allow efficient capture of aromatic hydrocarbons such as Xylene and Styrene. The highly inert WAX-column InertCap Pure-WAX is the optimal column for fragrance components analyses. It is recommended to use this medicine in conjunction with MonoTrap.

Column : InertCap Pure-WAX (Cat.No.1010-68142) 0.25 mm I.D. × 30 m df=0.25 μm

## Protocol



### GC Condition

**System** : SHIMADZU GC-2010, GCMS-QP2010

**Column** : InertCap Pure-WAX  
0.25 mm I.D. × 30m df=0.25 μm

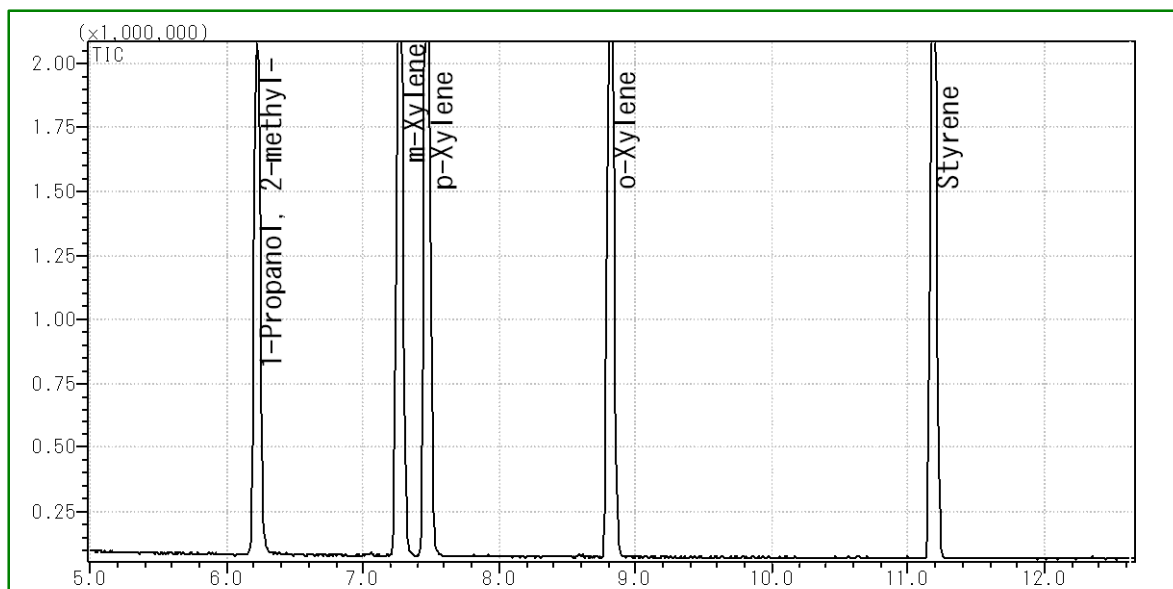
**Column Temp** : 40 °C (5min) → 5 °C/min → 120 °C → 20 °C/min → 250 °C

**Carrier Gas** : He 1.15mL/min

**Injection** : Split 1:100, 1 μL 250 °C  
: MS Scan (*m/z*; 25-450)

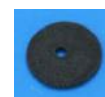
### Detection

Ultra inert WAX column **InertCap Pure-WAX** is highly recommended to analyze aromatic compounds together with **MonoTrap**



### MonoTrap Series

Cat.No	Description	Shape	Size	Active Carbon	Functional Group
1050-72101	MonoTrap DCC18	Disk	O.D.10 mm x thick 1 mm	Yes	C18
1050-72201	MonoTrap RCC18	Rod	5 mm	Yes	C18
1050-71101	MonoTrap DSC18	Disk	O.D. 10 mm x thick 1 mm	No	
1050-71201	MonoTrap RSC18	Rod	5 mm	No	C18



DCC18



RCC18



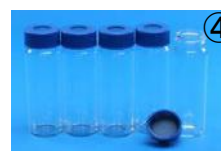
DSC18



RSC18

### MonoTrap Convenient MonoTrap Start-UP-KIT

	Description	Qty.
①	MT Holder	5
②	MT Stand	1
③	MT Extract Cup with Vial (20 mL)	5
④	Clean Pin Hole Septum with vial (40 mL)	5
⑤	200µL Glass Insert (Flat Bottom)	40
⑥	MonoTrap DCC18	20
⑦	MonoTrap RCC18	20
⑧	MonoTrap DSC18	20
⑨	MonoTrap RSC18	20



GL Sciences disclaims any and all responsibility for any injury or damage which may be caused by this data directly or indirectly. We reserve the right to amend this information or data at any time and without any prior announcement.

#### GL Sciences, Inc. Japan

22-1 Nishishinjuku 6-Chome  
Shinjuku-ku, Tokyo,  
163-1130, Japan  
Phone: +81-3-5323-6620  
Fax: +81-3-5323-6621  
Email: [world@gls.co.jp](mailto:world@gls.co.jp)  
Web: [www.glsciences.com](http://www.glsciences.com)

#### GL Sciences B.V.

De Sleutel 9  
5652 AS Eindhoven  
The Netherlands  
Phone: +31 (0)40 254 95 31  
Email: [info@glscienc.es](mailto:info@glscienc.es)  
Web: [www.glsciences.eu](http://www.glsciences.eu)

#### GL Sciences (ShangHai) Ltd.

Tower B, Room 2003,  
Far East International Plaza,  
NO,317 Xianxia Road,  
Changning District.  
Shanghai, China P.C. 200051  
Phone: +86 (0)21-6278-2272  
Email: [contact@glscienc.es.com.cn](mailto:contact@glscienc.es.com.cn)  
Web: [www.glsciences.com.cn](http://www.glsciences.com.cn)

#### GL Sciences, Inc. USA

4733 Torrance Blvd. Suite 255  
Torrance, CA 90503  
Phone: 310-265-4424  
Fax: 310-265-4425  
Email: [info@glscienc.esinc.com](mailto:info@glscienc.esinc.com)  
Web: [www.glsciencesinc.com](http://www.glsciencesinc.com)

#### International Distributors

Visit our Website at:  
<https://www.glsciences.com/company/distributor.html>

