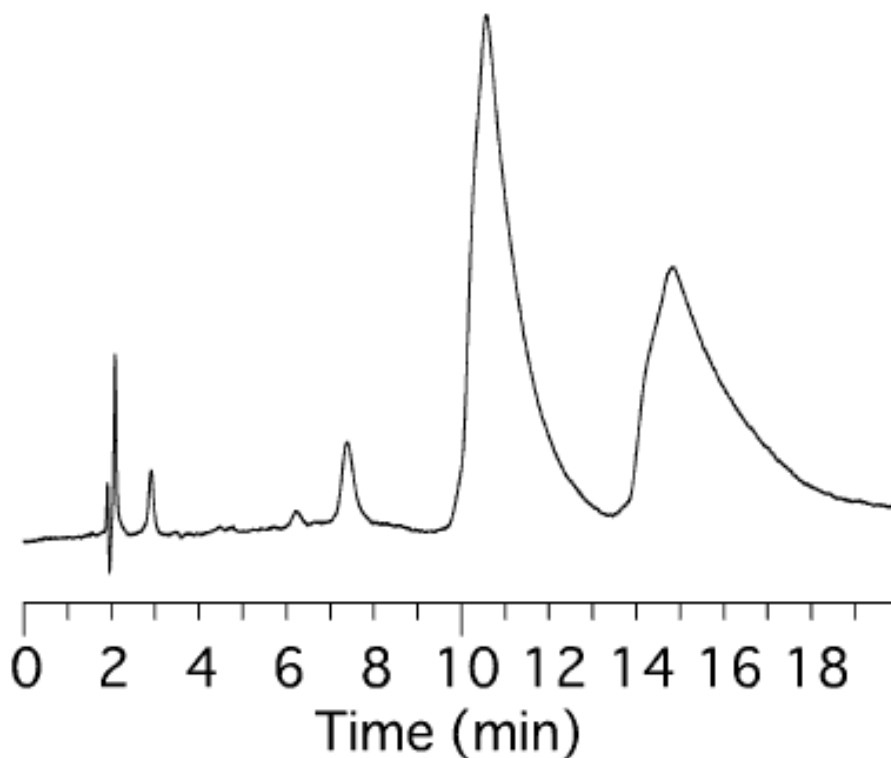


# InertSearch™ for LC

Inertsil® Applications

## Analysis of Trihexyphenidyl

Data No. LA398-0000



Column : Bioptic AV-1  
5 $\mu$ m  
150  $\times$  4.6 mmI.D.

Solutes : D,L-Trihexyphenidyl

Column Cat. No. : 5020-02511

Eluent : MeOH /50mM phosphate buffer (pH6.8) =10 / 90(w / w)

Flow rate : 1.0 mL/min.

Col. Temp. : 40°C

Detection : UV 254 nm

Injection Vol. :

Sample : D,L-Trihexyphenidyl