



COMMUNITY PROGRAMS

Alzheimer's Association®
Florida Chapters
800.272.3900 | [alz.org](https://www.alz.org)®



CONTENTS



The Alzheimer's Association® is proud to coordinate services in Florida through three chapters: Central and North Florida, Florida Gulf Coast, and Southeast Florida. We serve Floridians by providing education, awareness, outreach and support.

Please use this guide to explore local programming. For additional resources visit Community Resource Finder at alz.org/crf.

Welcome	03
Meet Our Team	04
Information & Support	05
Virtual Programs	06
On-Demand Programs	09
Brain Bus	10
Northwest Florida	11
Greater Gainesville & Jacksonville	13
Greater Ocala & The Villages	18
Greater Orlando	21
Greater Tampa Bay	25
Greater Polk	29
Greater Sarasota	32
Southwest Florida	35
Greater Treasure Coast	39
Palm Beach County	42
Broward County	45
Miami-Dade & Monroe Counties	48
Community Engagement.....	51
The Intersection of IDD and Alzheimer's	52
For Professionals	53
For Researchers	54
Other Ways to Get Involved	55

WELCOME

The Alzheimer's Association, Florida Chapters, serves all 67 counties in our beautiful state. We offer education, outreach, and support to everyone facing Alzheimer's and other dementias within our community, including individuals living with the disease, caregivers, professionals, families, and community members. Our commitment extends to advocating for the needs and rights of those confronted with Alzheimer's disease and promoting essential research towards treatment, prevention, and ultimately, a cure.

We provide programs through various formats: virtually, by telephone, on-demand, and in person. Most of our programs are offered at no charge, with some exceptions for professional programs. Additionally, we tailor programs for specific groups such as civic organizations, chambers of commerce, companies, and more. Please reach out to your local Program Manager to arrange a private and personalized program for your group or to invite us to your local event or health fair.

Volunteer with the Alzheimer's Association

Volunteers play a crucial role in positively impacting the lives of those facing Alzheimer's and dementia. By volunteering with the Alzheimer's Association, you become part of a dedicated network working to combat this devastating disease, honor loved ones, and provide care and support to those in need. Learn more at volunteer.alz.org.

Explore Various Opportunities:

- Community Educator
- Support Group Facilitator
- Community Connector
- Awareness Champion
- Alzheimer's Advocate
- Brand Ambassador
- Walk to End Alzheimer's Committee
- The Longest Day Committee
- And more!

LEARN MORE



Meet Our Team

Care and Support

Julie Shatzer
Northwest Florida

Donna Lee
Greater Gainesville & Jacksonville

Stefanie Wardlow
Greater Ocala & The Villages

Lyndsey Taylor
Greater Orlando

Makeba Huntington-Symons, M.A.
Greater Tampa Bay

Jody Streussnig, BAA, CDP, CMDCP
Greater Polk

Silvia Caldwell, LPN
Greater Sarasota

Lisa L. Kiddon
Southwest Florida

Evelyn Espinal, BBA
Greater Treasure Coast

Olivia Curtis, B.S.
Palm Beach

Samrah Mitha, MPH
Broward

Keith Gibson
Miami-Dade & Monroe

Regional

Julie Shatzer, MSW, LCSW, Vice President of Programs

Kasia Sherwin, MNM, Director of Grants and Data

Keith Gibson, Sr. Director, Community Engagement

Katie Fahrenbruch, M.Ed., Director of Community Engagement

Stefanie Wardlow, M.A., Senior Program Manager Quality Initiatives and Brain Bus



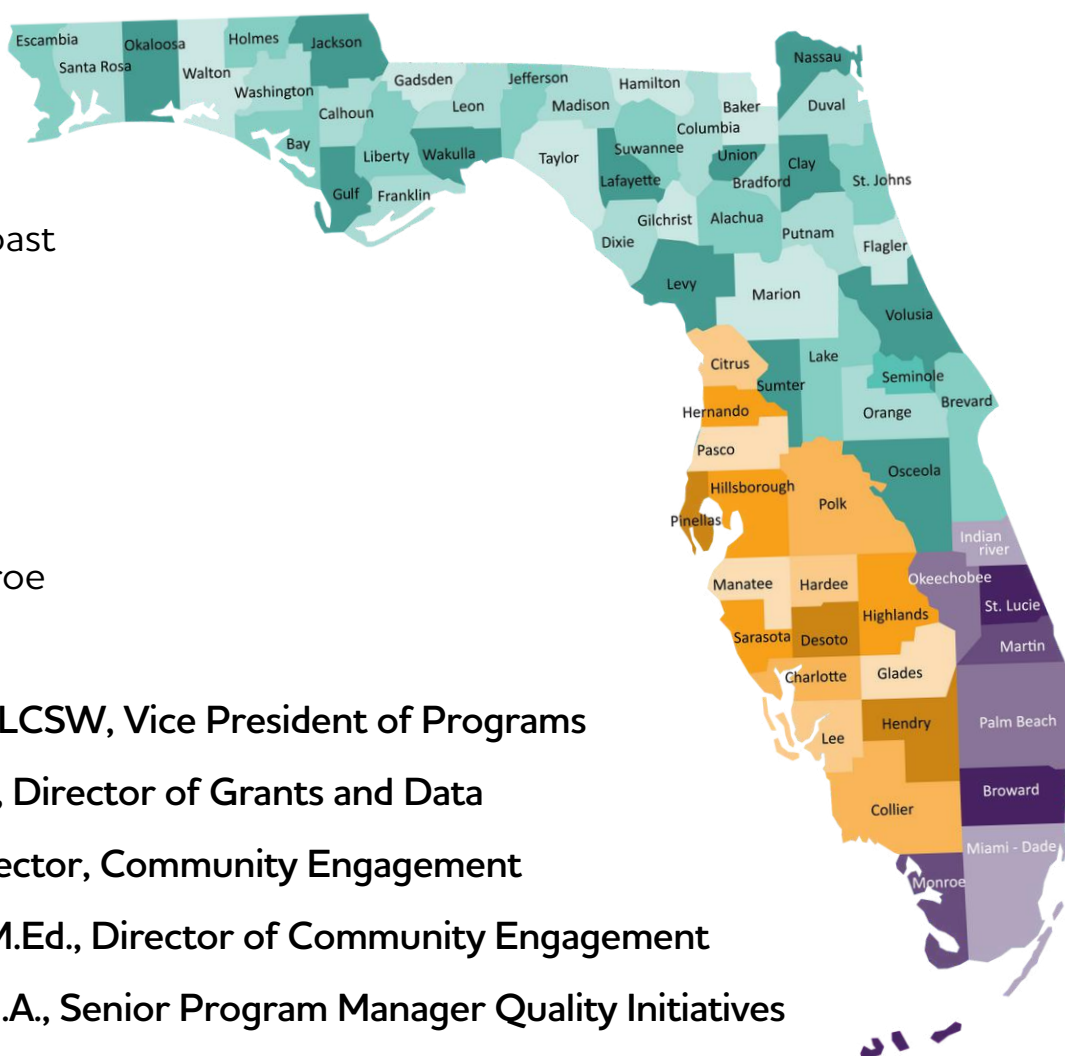
Central & North Florida Chapter



Florida Gulf Chapter



Southeast Florida Chapter



INFORMATION & SUPPORT



Welcome to ALZConnected®

ALZConnected is a dedicated community where people with Alzheimer's, their caregivers, and others affected by the disease can share answers, opinions, ideas, and support. Learn more at alzconnected.org



Care Consultations

Living with mild cognitive impairment, Alzheimer's disease, or other dementia profoundly impacts multiple generations. Each person has a unique role, spouses, siblings, children of all ages, and friends—all contributing to the care team. This journey demands careful consideration, strategic planning, and above all, a well-thought-out plan.

Care Consultations from the Alzheimer's Association can help you to:

- Navigate difficult caregiving decisions and family issues.
- Assess current needs and anticipate future care challenges.
- Develop an effective care plan and problem-solve barriers.
- Receive supportive listening in a confidential, nonjudgmental environment.

Our professional staff has the knowledge to guide you through a variety of topics. People reach out for many different reasons. Not sure what to ask or where to start? That's okay, too. Just give us a call and we'll guide you from there. The service is free and is at no cost to you.

Consultations are available several ways:

- **Phone:** Call 800.272.3900 for 24/7 support; use 711 for TRS operator.
- **Live Chat:** Access via the green button on our website, available 8 a.m. to 8 p.m. ET, Monday to Friday. alz.org/help-support.
- **Online Form:** Fill out a [form](#) for assistance, with a response within 24 hours.

Build an Action Plan with ALZNavigator™

Whether you're a caregiver, a person living with dementia, or someone concerned about memory loss, find the support you need with ALZNavigator. Just answer a few questions about your situation and ALZNavigator will guide you to the resources and tools you need today and throughout each step of the disease — all in one place. alz.org/alznavigator



VIRTUAL PROGRAMS

Virtual Brain Bus

**JUNE
25**

**ARE YOU READY? DISASTER PREPAREDNESS
FOR CAREGIVERS**

12 p.m. ET



Engage ALZ

**JUNE
03**

HEALTHY LIVING FOR YOUR BRAIN AND BODY

10 a.m. ET



**JUNE
10**

10 WARNING SIGNS OF ALZHEIMER'S

10 a.m. ET



**JUNE
10**

MANAGING MONEY

12 p.m. ET



**JUNE
11**

**BEAUTIFUL BRAINS: GIFTS BESTOWED FOR
SCIENTIFIC DISCOVERY**

12 p.m. ET



**JUNE
17**

EFFECTIVE COMMUNICATION STRATEGIES

10 a.m. ET



**JUNE
24**

**UNDERSTANDING AND RESPONDING TO
DEMENTIA RELATED BEHAVIORS**

10 a.m. ET



**JULY
8**

**UNDERSTANDING AND RESPONDING TO
DEMENTIA RELATED BEHAVIORS**

12 p.m. ET



**AUGUST
12**

10 WARNING SIGNS OF ALZHEIMER'S

12 p.m. ET



**SEPT.
9**

**THE EMPOWERED CAREGIVER: BUILDING
FOUNDATIONS OF CAREGIVING**
12 p.m. ET

 **LEARN MORE**

**OCT.
14**

**THE EMPOWERED CAREGIVER: SUPPORTING
INDEPENDENCE**
12 p.m. ET

 **LEARN MORE**

**NOV.
11**

**THE EMPOWERED CAREGIVER:
COMMUNICATING EFFECTIVELY**
12 p.m. ET

 **LEARN MORE**

**DEC.
9**

**THE EMPOWERED CAREGIVER: RESPONDING
TO DEMENTIA-RELATED BEHAVIORS**
12 p.m. ET

 **LEARN MORE**

AAIC FOR ALL

**JULY
31**

SESSION FOR CLINICIANS
9 a.m. -1 p.m. EST or on your own time
if attending virtually


 **LEARN MORE**

**JULY
31**

COMMUNITY SESSION
9 a.m. -1 p.m. EST or on your own time
if attending virtually

 **LEARN MORE**

ADVANCE YOUR ALZHEIMER'S AND DEMENTIA CLINICAL PRACTICE KNOWLEDGE

 **Access to Cutting-Edge Research
Updates Tailored to Busy Providers**

 **Earn CME/CE Credits at No Cost**

 **Participate Live on July 31
or On Your Own Time***

Participate in AAIC For All in Toronto, Canada
or online **July 31, 2025.**
Register by July 31. alz.org/AAICForAllClinicians

*AAIC for All will be recorded and available for playback for 30 days after the event for all registered attendees.



ALZHEIMER'S ASSOCIATION®
AAIC>25 FOR ALL

VIRTUAL PROGRAMS

VIRTUAL SUPPORT GROUPS

When you're facing difficult times, having a good support network you can turn to for advice and encouragement may help you feel connected and give you a sense of belonging and purpose. Connecting with others like you virtually may help put your own experiences living with the disease in perspective, and provide you with the support and encouragement necessary to move beyond your diagnosis. Call the 24/7 Helpline for instructions on how to log into the virtual meeting.

Caregiver Support Groups

- 2nd & 4th Tuesday, 10 a.m. ET
- 2nd Tuesday, 7 p.m. ET
- 2nd Friday, 12:30 p.m./11:30 a.m. ET
- 3rd Tuesday, 3 p.m. ET
- 3rd Tuesday, 6 p.m. ET
- 3rd Thursday, 12:30 p.m. ET
- 4th Monday, 5 p.m. ET
- 4th Thursday, 9:30 a.m. ET
- 4th Saturday, 3:30 p.m. ET

Caregiver Support Group in Spanish

- 1st Thursday, 12:30 p.m. ET
- 2nd Monday, 6 p.m. ET

Adult Children Bilingual Support Group

- 4th Thursday, 6 p.m. ET

Early Stage Support Group

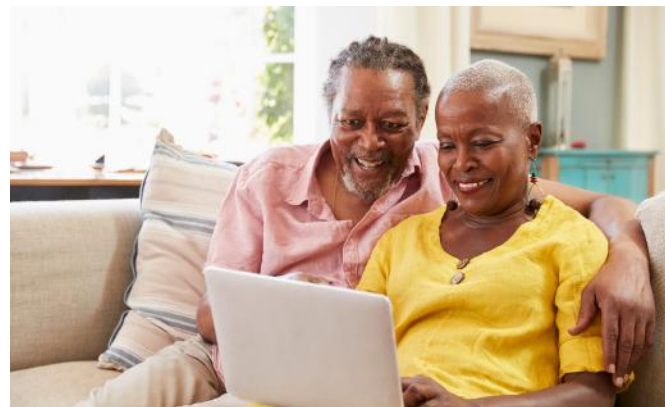
- 1st Friday, 10 a.m. ET
- 3rd Tuesday, 1:30 p.m. ET

Veteran's Caregiver Support Group

- 4th Thursday, 1 p.m. ET

Younger Onset Support Group

- 3rd Wednesday, 11 a.m. ET



ON-DEMAND PROGRAMS

EXPLORE RECORDED WEBINARS

Access on-demand education at [Alzprogramsanytime.org](https://alzprogramsanytime.org)

Featured on-demand webinar

Hurricane Preparedness Tips for Caregivers

Learn tips on preparing for potential disaster

[Click here](#) to register and watch the recording.



We have topics under the following categories:



Caregiver Resources

Learn strategies to help you care for your loved one living with Alzheimer's or other dementia.



Brain Health & Warning Signs

Identify the warning signs of Alzheimer's, learn how to reduce your risk and more.



The Empowered Caregiver

This education series teaches caregivers how to navigate the responsibilities of caring for someone living with dementia.



Latest Research

Discover the latest advancements in Alzheimer's and dementia research.



Community-Specific Resources

Understand how to work with specific communities including those with intellectual and developmental disabilities, deafness or hard of hearing and more.



En Español (Spanish Language Videos)

BRAIN BUS



Rob Harris
Program Manager

The Brain Bus raises awareness of Alzheimer's and related dementias and addresses the benefits of early detection, early diagnosis, brain health and risk reduction. With two mobile units and virtual offerings the Brain Bus is able to travel throughout Florida.



Heike Accorsi
Trilingual Program Manager



The Brain Bus is sponsored in part by State of Florida Department of Elder Affairs and the Area Agency on Aging For Southwest Florida.

NORTHWEST FLORIDA

Bay, Calhoun, Escambia, Franklin, Gadsden, Gulf, Holmes, Leon, Liberty, Okaloosa, Santa Rosa, Wakulla, Walton & Washington Counties

Julie Shatzer, MSW, LCSW

Vice President of Programs | 727.270.9847 | jshatzer@alz.org

For virtual programs see table of contents.

PRIVATE AND PERSONALIZED PROGRAMS

We tailor programs for specific groups such as civic organizations, chambers of commerce, companies, and more. Please reach out to arrange a private, personalized, no-cost program for your group or to invite us to your local event or health fair.

- Rotary Club of South Walton
- Fort Walton Beach Yacht Club
- Rotary Club of Milton

COMMUNITY EDUCATION & OUTREACH

Calhoun County

Brain Bus Stop at Sam Atkins Park

Saturday, October 18, 8 a.m.

Sam Atkins Park, 17316 NW Silas Green St. Blountstown 32424

Escambia County

Healthy Living for Your Brain and Body

Tuesday, June 10, 1 p.m. CST

Bayview Senior Center, 2000 E Lloyd St, Pensacola 32503

Awareness Presentation

Wednesday, June 18, 1 p.m. CST

Baptist Hospital, 123 Baptist Way, Pensacola 32503

Awareness Presentation

Thursday, June 19, Noon CST

Baptist Medical Park Nine Mile, 9400 University Pkwy., Pensacola 32514



NORTHWEST FLORIDA

Bay, Calhoun, Escambia, Franklin, Gadsden, Gulf, Holmes, Leon, Liberty, Okaloosa, Santa Rosa, Wakulla, Walton & Washington Counties

Brain Bus Stop at the Gallery Night Juneteenth: Art of Freedom

Friday, June 20, 5 p.m. CST

405a S Palafox St., Escambia 32502

Santa Rosa County

Awareness Presentation

Friday, June 27, Noon CST

Andrews Institute, 1040 Gulf Breeze Pkwy., Gulf Breeze 32561

Brain Bus Stop at Clyde L. Gracie Community Center

Friday, September 19, 8 a.m. CST

Clyde L. Gracie Community Center, 5629 Byrom St., Milton 32570

Brain Bus Stop at First Baptist Church Milton

Thursday, September 18, 10 a.m. CST

First Baptist Church Milton, 6797 Caroline St., Milton 32570

Walton County

Healthy Living for Your Brain and Body

Tuesday, June 17, 1:30 p.m. CST

The Blake at Miramar Beach, 90 Ponce De Leon St, Miramar Beach 32550

Healthy Living for Your Brain and Body

Tuesday, June 17, 9:00 p.m. CST

The Blake at Miramar Beach, 90 Ponce De Leon St, Miramar Beach 32550

Washington County

Brain Bus Stop at Possum Palace

Saturday, August 2, 8 a.m.

Possum Palace, 3121 Possum Palace Dr. Chipley 32428

CAREGIVER SUPPORT GROUPS

Escambia County

2nd Thursday at 5:45 p.m. CST

Pensacola Library Conference Room, 239 N. Spring St., Pensacola 32502

2nd Friday at 1:30 p.m. CST

Azalea Trace, 10100 Hillview Drive, Pensacola 32514

3rd Friday at 10:39 a.m. CST

Olive Baptist Church, 1836 East Olive Road, Pensacola 32514

Okaloosa County

1st Wednesday at 11:30 a.m.

The Meridian at Westwood, 1001 Mar Walt Drive, Ft Walton Beach 32547

1st Wednesday at 2 p.m. CST

Niceville Senior Center, 201 Campbell Drive, Niceville, FL 32578

2nd Wednesday at 2 p.m. CST

Crestview Senior Activity Center, 205 Stillwell Blvd., Crestview 32539

Santa Rosa County

2nd Monday at 10 a.m. CST

Navarre United Methodist Church, 9474 Navarre Pkwy., Navarre 32566

2nd Thursday at 1 p.m. CST

Milton Community Center, 5629 Byrom Street, Milton 32570

3rd Tuesday at 10 a.m. CST

Beehive, 4702 Gulf Breeze Parkway, Gulf Breeze 32563

Walton County

3rd Monday at 11 a.m. CST

Defuniak Springs, 312 College Ave., DeFuniak Spings 32435



GREATER GAINESVILLE & JACKSONVILLE

Alachua, Baker, Bradford, Columbia, Clay, Duval, Gilchrist, Hamilton, Jefferson, Lafayette, Levy, Madison, Nassau, St. Johns, Suwanee, Taylor & Union Counties



Donna Lee

Program Manager | 850.583.8758 | dmlee@alz.org

For virtual programs see table of contents.

PRIVATE AND PERSONALIZED PROGRAMS

We tailor programs for specific groups such as civic organizations, chambers of commerce, companies, and more. Please reach out to arrange a private, personalized, no-cost program for your group or to invite us to your local event or health fair. Thank you to the following organization(s).

COMMUNITY EDUCATION & OUTREACH

Brain Bus Stop at City of Alachua City Hall

Monday, June 9, 4 p.m.

City of Alachua City Hall, 15100 NW 142 Terrace, Alachua 32615

Brain Bus Stop at Williston Care Center

Friday, July 25, 3:30 p.m.

Williston Care Center, 300 NW 1st Ave., Williston 32696

Brain Bus Stop at Alachua County Sports and Event Center

Saturday, August 16, 9 a.m.

Sports and Event Center, 4870 Celebration Pointe Ave, Gainesville 32608

Brain Bus Stop at Mt Moriah Church

Sunday, August 17, 9 a.m.

Mt Moriah Church, 718 SE 11th St., Gainesville 32641

Brain Bus Stop at Lubee Bat Conservatory

Saturday, October 25, 8 a.m.

Lubee Bat Conservatory, 18405 CR-231, Gainesville 32609

Bradford County

Brain Bus Stop at Bradford ARC Hub

Tuesday, August 12, 10 a.m.

Bradford ARC Hub, 10501 Hampton Ave., Hampton 32091

Brain Bus Stop at Tatem Brother's Park

Thursday, August 14, 10 a.m.

Tatem Brother's Park, 22598 Park St, Lawtey 32058

Brain Bus Stop at Tatem Brother's Park

Thursday, November 13, 10 a.m.

Tatem Brother's Park, 22598 Park St, Lawtey 32058

Clay County

Brain Bus Stop at Thrasher-Horne Conference Center

Saturday, August 9, 10 a.m.

Thrasher-Horne Conference Center, 283 College Dr. Orange Park 32065

Duval County

Brain Bus Stop at River Garden Hebrew Home

Thursday, July 24, 9 a.m.

River Garden Hebrew Home, 11401 Old Saint Augustine Rd., Jacksonville 32258

Brain Bus Stop at Almost Home DayBreak Center

Friday, August 1, 8:30 a.m.

Almost Home DayBreak Center, 3604 Cardinal Point Dr., Jacksonville 32257

Brain Bus Stop at St. Paul Missionary Church

Saturday, August 2, 10 a.m.

St. Paul Missionary Church, 3738 Winton Dr., Jacksonville 32208

10 Warning Signs of Alzheimer's

Monday, August 11, 10 a.m.

North Jacksonville Baptist Church Senior Ministry, 8531 N Main St., Jacksonville

Gilchrist County

Brain Bus Stop at Hart Springs RV and Campground

Saturday, October 18, 9:30 a.m.

Hart Springs RV and Campground, 4183 SW 80th Ct., Bell 32619



GREATER GAINESVILLE & JACKSONVILLE

Alachua, Baker, Bradford, Columbia, Clay, Duval, Gilchrist, Hamilton, Jefferson, Lafayette, Levy, Madison, Nassau, St. Johns, Suwanee, Taylor & Union Counties

Nassau County

Brain Bus Stop at YMCA Wildlight

Saturday, June 7, 10 a.m.

YMCA Wildlight, 251 Breezeway Street, Yulee 32097

Suwanee County

Brain Bus Stop at Live Oak Library

Thursday, September 11, 5:30 p.m.

Live Oak Library, 1848 Ohio Ave S, Live Oak 32064

Union County

Brain Bus Stop at Lake Butler Middle School Gym

Saturday, July 19, 9 a.m.

Lake Butler Middle School Gym, 150 SW 6th St., Lake Butler 32054

CAREGIVER SUPPORT GROUPS

Alachua County

2nd Friday, Noon

Senior Healthcare Center at Crown Pointe, 2205 NW 40th Terr., Gainesville

Duval County

1st Wednesday, 4 p.m.

The Windsor at San Pablo, 4000 San Pablo Parkway, Jacksonville 32224

2nd Wednesday, 3:30 p.m.

River Garden Hebrew Home, 11401 Old, St. Augustine Rd., Jacksonville 32258

2nd Wednesday, 6 p.m.

Palms Presbyterian Church, 3410 3rd St. South, Jacksonville Beach 32250

Levy County

2nd Thursday, 1:30 p.m.

Luther Callaway Public Library, 104 NE 3rd Street, Chiefland 32626

St. Johns County

1st Wednesday, 11:30 a.m.

The Players Community Senior Center, 175 Landrum Lane, Ponte Vedra Beach



GREATER OCALA & THE VILLAGES

Citrus, Hernando, Lake, Marion, Osceola, Putnam & Sumter Counties

Stefanie Wardlow, M.A.

Senior Program Manager | 727.270.9862 | swardlow@alz.org

For virtual programs see table of contents.

PRIVATE AND PERSONALIZED PROGRAMS

We tailor programs for specific groups such as civic organizations, chambers of commerce, companies, and more. Please reach out to arrange a private, personalized, no-cost program for your group or to invite us to your local event or health fair. Thank you to the following organization(s).

MCI/EARLY STAGE/YOUNG ONSET SUPPORT GROUPS

Registration required, please call 800.272.3900.

Lake County

1st Friday, 10 a.m.

Clermont Rec. Center, (South Entrance), Room 6, 3700 S. Hwy. 27, Clermont

Sumter County

1st Friday, 10 a.m.

Charter Research, The Villages 32162. *First Steps, in-person or virtual

CAREGIVER SUPPORT GROUPS

Lake County

1st Thursday, 2 p.m.

Alto Senior Living, 1601 Hooks St., Clermont 34711

3rd Wednesday, 1:30 p.m.

Waterman Village, 445 Waterman Ave., Mt. Dora 32757

Marion County

3rd Friday, 2:30 p.m.

Ocala VA Clinic, 4826 SW 49th Rd., Ocala 34474

*for Veteran caregivers or caregivers of Veterans

GREATER OCALA & THE VILLAGES

Citrus, Hernando, Lake, Marion, Osceola, Putnam & Sumter Counties

4th Tuesday, 1 p.m.

Brookdale Canopy Oaks, 9070 SW 80th Ave., Ocala 34481

4th Thursday, 2:30 p.m.

Marion Senior Services, 1101 SW 20th Ct., Ocala 34471

Sumter County

2nd Thursday, 2 p.m.

Wildwood Community Center, 6500 Powell Rd., Wildwood, FL 34785





GREATER ORLANDO

Brevard, Flagler, Orange, Seminole & Volusia Counties



Lyndsey Taylor

Program Manager | 407.543.9429 | lyctaylor@alz.org

For virtual programs see table of contents.

PRIVATE AND PERSONALIZED PROGRAMS

We tailor programs for specific groups such as civic organizations, chambers of commerce, companies, and more. Please reach out to arrange a private, personalized, no-cost program for your group or to invite us to your local event or health fair. Thank you to the following organization(s).

COMMUNITY EDUCATION & OUTREACH

Brevard County

Brain Bus Stop at The Center for Collaboration

Tuesday, June 24, 10:30 a.m.

The Center for Collaboration, 1100 US-1, Rockledge 32955

Brain Bus Stop at St John the Evangelist Catholic Community

Friday, July 18, 10 a.m.

St John Evangelist Catholic Community, 5655 Stadium Parkway, Brevard 32940

Brain Bus Stop at Viera Government Center

Wednesday, July 30, 10 a.m.

Viera Government Center, 2725 Judge Jamieson Way, Viera 32940

Brain Bus Stop at Titusville Government Center

Thursday, July 31, 9 a.m.

Titusville Government Center, 400 South St., Titusville 32780

Orange County

Brain Bus Stop at Titusville Government Center

Thursday, July 31, 9 a.m.

Titusville Government Center, 400 South St., Titusville 32780



GREATER ORLANDO

Brevard, Flagler, Orange, Seminole & Volusia Counties

Brain Bus Stop at Orange County Convention Center

Saturday, August 23, 10 a.m.

Orange County Convention Center, 9800 International Dr., Orlando 32819

Brain Bus Stop at Orange County Convention Center

Sunday, August 24, 11 a.m.

Orange County Convention Center, 9800 International Dr., Orlando 32819

Seminole County

Brain Bus Stop at Oviedo on the Park

Wednesday, October 22, 8 a.m.

Oviedo on the Park, 299 Center Lake Ln., Oviedo 32765

MCI / Early Stage / Young On-set Group

Registration required, please call 800.272.3900

Seminole County

Art Connects ALZ, early stage Alzheimer's disease art class

Mondays, 1 p.m.

One Senior Place- Greater Orlando, Altamonte Springs 32714

CAREGIVER SUPPORT GROUPS

Brevard County

2nd and 4th Tuesday, 10:30 a.m.

Rockledge Presbyterian Church, 921 Rockledge Dr., Rockledge 32955

Flagler County

2nd Monday, 11 a.m.

Market Street Assisted Living, 2 Corporate Drive, Palm Coast 32137

2nd and 4th Monday, 3:30 p.m.

St. Elizabeth Ann Seton Catholic Church, 4600 Belle Terre Pkwy., Palm Coast

Orange County

1st Monday, 7 p.m.

Forest Lake Seventh Day Adventist Church, 515 Harley Lester Ln., Apopka 32703

GREATER ORLANDO

Brevard, Flagler, Orange, Seminole & Volusia Counties

1st Wednesday, 6 p.m.,
Neurology One, 92 N. Dean Rd., Suite 100, Orlando 32825
*Bilingual/Spanish Caregiver Support Group

2nd Monday, 4 p.m.
One Senior Place- Greater Orlando, 715 Douglas Ave., Altamonte Springs 32714

1st Thursday, 6 p.m.
Spring Hills Lake Mary, 3655 W Lake Mary Blvd., Lake Mary 32746

3rd Thursday, 3 p.m.
The Mayflower, 1850 Mayflower Ct., Winter Park 32792

Volusia County

1st Tuesday, 12 p.m.
Brookdale Deland, 1210 N. Stone St., Deland 32720

1st Friday, 10:30 a.m.
Port Orange Presbyterian Church, 4662 S. Clyde Morris Blvd., Port Orange

3rd Tuesday at 10:30 a.m.
Aberdeen, 50 Allwood Green Blvd., Ormond Beach 32174

3rd Wednesday, 6 p.m.
The Blake @ LPGA, 1635 N Williamson Blvd., Daytona Beach 32117

3rd Thursday, 10:30 a.m.
Arya at Debary, 838 Signature Dr., Debary 32713





GREATER TAMPA BAY

Hillsborough, Pasco & Pinellas Counties



Makeba Huntington-Symons, M.A.

Senior Program Manager | 727.220.4446

mahuntingtonsymons@alz.org

For virtual programs see table of contents.

PRIVATE AND PERSONALIZED PROGRAMS

We tailor programs for specific groups such as civic organizations, chambers of commerce, companies, and more. Please reach out to arrange a private, personalized, no-cost program for your group or to invite us to your local event or health fair.

COMMUNITY EDUCATION & OUTREACH

Hillsborough County

Brain Bus Stop at 100 North Tampa Building

Tuesday, June 17, 11 a.m.

100 North Tampa Building, 100 N. Tampa St., Tampa 33602

Brain Bus Stop at 100 North Tampa Building

Tuesday, June 18, 11 a.m.

100 North Tampa Building, 100 N. Tampa St., Tampa 33602

Healthy Living for your Brain and Body: Tips from the Latest Research

Wednesday, June 18, Noon

BayCare Health Hub, 2470 Bloomingdale Ave., Valrico 33956

Healthy Living for your Brain and Body: Tips from the Latest Research

Wednesday, September 17, Noon

BayCare Health Hub, 2470 Bloomingdale Ave., Valrico 33956

Healthy Living for your Brain and Body: Tips from the Latest Research

Wednesday, November 19, Noon

BayCare Health Hub, 2470 Bloomingdale Ave., Valrico 33956



GREATER TAMPA BAY

Hillsborough, Pasco & Pinellas Counties

Pinellas County

Brain Bus Stop at JB Sanderlin Center

Thursday, September 11, 5:30 p.m.

JB Sanderlin Center, 2335 22nd Ave South St. Petersburg 33712

CAREGIVER SUPPORT GROUPS

Hillsborough County

4th Monday 1 p.m.

St. Andrew Presbyterian Church, 1239 W Del Webb Blvd, Rm 2, Sun City Center

2nd Tuesday, 12 p.m.

Hyde Park Methodist, 500 W. Platt Street, Tampa 33606. RSVP required.
(Hybrid, in-person and virtual via Zoom)

3rd Tuesday, 6:30 p.m. & 4th Wednesday at 2 p.m.

Tessera of Brandon, 1320 Oakfield Drive, Brandon 33511. RSVP required.
(Hybrid, in-person and virtual via Zoom)

3rd Wednesday, 12 p.m.

St. James United Methodist, 16202 Bruce B. Downs Blvd., Tampa 33647

3rd Wednesday, 12 p.m.

St. James United Methodist, 16202 Bruce B. Downs Blvd., Tampa 33647

1st Thursday, 3 p.m.

Phyllis Busansky Adult Day Center, 4102 West Spruce Street, Tampa 33607

2nd Thursday, 3 p.m.

Plant City Adult Day Center, 1205 S. Waller Street, Plant City 33566

4th Thursday at 3 p.m.

Wimauma Adult Day Center, 16621 Lagoon Shore Blvd., Wimauma 33598

*Respite available

Pasco County

2nd Wednesday, 3 p.m.

Compass Rose of Zephyrhills, 37411 Eiland Blvd., Zephyrhills 33542

1st Thursday, 10:30 a.m.

Land O' Lakes Public Library, 2818 Collier Pkwy., Land O' Lakes 34639

2nd Thursday, 1 p.m.

Millpond Estates Club House, 7729 Morningdale Drive, New Port Richey 34653

Pinellas County

Every Monday, 9:30 a.m.

Palm Harbor Centre, 1500 16th Street, Palm Harbor 34683

1st and 3rd Monday, 1 p.m.

Madonna Ptak Memory Disorders Clinic, 430 Morton Plant St., Ste. 401, Clearwater

2nd Tuesday, 9:30 a.m.

Largo Public Library, 120 Central Park Drive, Largo 33771

2nd Tuesday, 10 a.m.

Arden Courts of Palm Harbor, 2895 Tampa Road, Palm Harbor 34684

Every Wednesday, 10 a.m.

Hale Activity Ctr. Dunedin, 330 Douglas Avenue, Dunedin 34698

2nd Wednesday, 1 p.m.

East Lake Public Library, 4125 E. Lake Road S., Palm Harbor 34685

2nd and 4th Wednesday, 10 a.m.

Visiting Angels Tarpon Springs, 35 W. Lemon St., Tarpon Springs 34689



GREATER TAMPA BAY

Hillsborough, Pasco & Pinellas Counties

3rd Wednesday, 6 p.m.

TLC Adult Day Care & Recreation Center, 3970 Tampa Rd., Unit J., Oldsmar 34677

1st and 3rd Thursday, 2 p.m.

2nd Thursday, 6 p.m.

St. Anthony's Memory Disorders Center, Professional Office Building

1201 5th Avenue, N., Suite 309, St. Petersburg 33705

1st Thursday, 6 p.m.

Arden Courts of Largo, 300 Highland Ave., Largo 33770

4th Thursday 10 a.m.

Craft Kafe Downtown 200 Central Avenue, St. Petersburg 33701



GREATER POLK

DeSoto, Hardee, Highlands & Polk Counties



Jody Mathewson, BAA, CDP, CMDCP

Senior Program Manager | 239.294.1729 | jmathewson@alz.org

For virtual programs see table of contents.

PRIVATE AND PERSONALIZED PROGRAMS

We tailor programs for specific groups such as civic organizations, chambers of commerce, companies, and more. Please reach out to arrange a private, personalized, no-cost program for your group or to invite us to your local event or health fair. Thank you to the following organization(s).

- City of Lakeland

COMMUNITY EDUCATION & OUTREACH

Highlands County

The Empowered Caregiver: Communicating Effectively

Monday, August 25, 5 p.m.

Faith Pentecostal House of God, 956 W. Hal McRae Blvd., Avon Park 33825

Polk County

Brain Bus Stop at Munn Park

Saturday, June 14, 10 a.m.

Munn Park, 210 E. Main St, Lakeland 33801

Brain Bus Stop at Christ Memorial Baptist Church

Thursday, June 26, 9 a.m.

Christ Memorial Baptist Church, 2929 Hardin Combee Rd., Lakeland 33801

Polk County Sheriff's Office Back to School Bash

Saturday, July 12, 9 a.m.

Polk County Sheriff's Office, 1100 Dunson Rd., Davenport, 33896

Brain Bus Stop at Central District Substation

Saturday, July 26, 9 a.m.

Central District Substation, 3635 Ave G NW. Winter Haven 33880

Brain Bus Stop at Polk County Sheriff's Office

Monday, November 17, 7:30 a.m.

Polk County Sheriff's Office, 1891 Jim Keene Blvd., Winter Haven 33880

CAREGIVER SUPPORT GROUPS

Polk County

2nd Tuesday 12 p.m.

Hawthorne Inn, 6150 Lakeland Highlands Rd., Lakeland 33813

*lunch provided

3rd Monday, 11 a.m.

Schalamar Creek Clubhouse Garden Room, 4500 US-92, Lakeland 33801

3rd Tuesday, 1:30 p.m.

3601 Cypress Gardens Rd., Winter Haven 33884

4th Thursday, 9:30 a.m.

Solivita Baltic Room, 395 Village Dr., Kissimmee 34759

4th Tuesday, 10:30 a.m.

Beautiful Minds Social Center, 1037 S. FL Ave. Suite #130, Lakeland 33803

*park in back





GREATER SARASOTA

Charlotte, Manatee & Sarasota Counties



Silvia Caldwell, LPN

Program Manager | 727.270.9894 | sicaldwell@alz.org

For virtual programs see table of contents.

PRIVATE AND PERSONALIZED PROGRAMS

We tailor programs for specific groups such as civic organizations, chambers of commerce, companies, and more. Please reach out to arrange a private, personalized, no-cost program for your group or to invite us to your local event or health fair. Thank you to the following organization(s).

- Stone River Retirement Community
- Lorraine Lakes Community

COMMUNITY EDUCATION & OUTREACH

Sarasota County

Health Fair

Saturday, June 7, Noon

Senior Friendship Center, 1888 Brother Geenen Way, Sarasota 34236

10 Warning Signs of Alzheimer's

Wednesday, June 25, 11:30 a.m.

YMCA, 705 Center Rd., Venice 34285

Caregiver Support Groups

Charlotte County

2nd Monday, 5:15 p.m.

ActivAge at Chelsea Place, 3626 Tamiami Trl., Port Charlotte 33952

2nd Tuesday, 3 p.m.

Punta Gorda Isles Civic Association, 2001 Shreve St., Punta Gorda 33950



GREATER SARASOTA

Charlotte, Manatee & Sarasota Counties

Manatee County

1st & 3rd Wednesday, 10 a.m.

Rocky Bluff Library, 6750 US-301, Ellenton 34222

1st Thursday at 10 a.m.

Westminster Bradenton at The Manor, 1700 21st Street West Bradenton 34205

2nd & 4th Thursday, 10 a.m.

Lakewood Ranch YMCA, 5100 Lakewood Ranch Blvd., Bradenton 34211

Sarasota County

1st Tuesday, 11:30 a.m.

Frances T. Bourne Jacaranda Library, 4143 Woodmere Park Blvd., Venice 34293

1st 2nd & 3rd Monday, 10 a.m.

Church of Palms, 3224 Bee Ridge Rd., Sarasota 34239

3rd Wednesday, 10 a.m.

San Pedro Catholic Church, 14380 Tamiami Trail, North Port 34287

2nd Thursday, 3 p.m.

Town Square Sarasota, 3882 Central Sarasota Pkwy., Sarasota 34238

*Respite available



SOUTHWEST FLORIDA

Collier, Glades, Hendry & Lee Counties



Lisa L. Kiddon

Program Manager | 727.316.8341 | llkiddon@alz.org

For virtual programs see table of contents.

PRIVATE AND PERSONALIZED PROGRAMS

We tailor programs for specific groups such as civic organizations, chambers of commerce, companies, and more. Please reach out to arrange a private, personalized, no-cost program for your group or to invite us to your local event or health fair.

COMMUNITY EDUCATION & OUTREACH

Collier County

Brain Bus Stop at Golden Gate Community Center

Wednesday, June 4, 9 a.m.

Golden Gate Community Center, 4701 Golden Gate Parkway, Naples 34116

Advancing the Science

Tuesday, June 17, Noon

Saint John the Evangelist Catholic Church, 625 11th Ave. N., Naples 34108

Lee County

Empowered Caregiver: Exploring Care and Support Services

Tuesday, June 10, 2 p.m.

Lakes Regional Library, 15290 Bass Rd., Fort Myers, 33919

Awareness Presentation

Monday, June 16, 10 a.m.

Well Way Second Floor Health Life Center 609 SE 13th Ct.nd, Cape Coral, 33990

Brain Bus Stop at Mariner's Landing

Monday, July 21, 10 a.m.

Mariner's Landing, 2120 Carrell Rdd., Fort Myers, 33901

Brain Bus Stop at North Fort Myers Regional Park Center

Friday, August 8, 10 a.m.

North Ft. Myers Regional Park Center, 2000 N Recreational Park Way, Fort Myers

Brain Bus Stop at Mount Olive African Methodist Episcopal

Saturday, July 26, 9 a.m.

2160 Veronica S Shoemaker Blvd., Fort Myers 33916

Brain Bus Stop at Area Agency on Aging Third Annual Community Resource Fair

Friday, September 12, 10 a.m.

Area Agency on Aging, 2830 Winkler Ave., Suite 112, Fort Myers 33916

Brain Bus Stop at Riverwoods Plantation Estero

Wednesday, January 14, 10 a.m.

Riverwoods Plantation Estero, 4600 Robert E. Lee Blvd., Estero 33928

CAREGIVER SUPPORT GROUPS

Lee County

1st Wednesday at 11 a.m.

Peace Lutheran Church, 15840 McGregor Blvd., Fort Myers 33908

1st Tuesday at 10 a.m.

Cypress Cove, 10200 Cypress Cove Drive, Fort Myers 33908

2nd Wednesday at 1 p.m. and/or 4th Friday at 10 a.m.

Good Shepherd United Methodist Church, 2951 Trail Dairy Cir., North Fort Myers

2nd Thursday at 10 a.m.

The Terraces at Bonita Springs, 26455 S. Tamiami Trail, Bonita Springs 34134

3rd Tuesday at 10 a.m.

Gulf Coast Village 1333 Santa Barbara Blvd., 4th Floor Craft Room, Cape Coral

3rd Thursday at 10 a.m.

Lee Healthy Life Center, Coconut Point, 23450 Via Coconut Point, Estero 33928





GREATER TREASURE COAST

Indian River, Martin, Okeechobee & St. Lucie Counties



Evelyn Espinal, BBA

Program Manager | 305.503.0468 | eaespinal@alz.org

For virtual programs see table of contents.

PRIVATE AND PERSONALIZED PROGRAMS

We tailor programs for specific groups such as civic organizations, chambers of commerce, companies, and more. Please reach out to arrange a private, personalized, no-cost program for your group or to invite us to your local event or health fair.

COMMUNITY EDUCATION & OUTREACH

Indian River County

Awareness Presentation

Friday, June 27, 6:30 p.m.

Community Missionary Baptist Church, 4229 29th Ave, Vero Beach 32967

Martin County

Health Fair

Saturday, May 31, 10 a.m.

The Children's Museum, 1707 NE Indian River Dr., Jensen Beach 34957

Brain Bus Stop at House of Hope

Wednesday, June 4, 1 p.m.

House of Hope, 2484 SE. Bonita St., Stuart 34997

Brain Bus Stop at House of Hope Hobe Sound

Wednesday, June 5, 9:30 a.m.

House of Hope Hobe Sound, 8937 SE. Bridge Rd., Hobe Sound 33455

Brain Bus Stop at House of Hope Indiantown

Wednesday, June 6, 9:30 a.m.

House of Hope Indiantown, 15549 SW. Warfield Blvd., Indiantown 34956



GREATER TREASURE COAST

Indian River, Martin, Okeechobee & St. Lucie Counties

Health Fair

Wednesday, June 11, 12:30 p.m.

Kane Center 900 SE Salerno Road, Stuart 34997

Brain Bus Stop at Blake Library

Friday, November 14, Noon

Blake Library, 2351 SE Monterey Rd., Stuart 34996

St. Lucie County

Brain Bus Stop at MIDFLORIDA Event Center

Saturday, June 7, 10 a.m.

MIDFLORIDA Event Center, 9221 SE. Event Center Place, Port St Lucie

Brain Bus Stop at Fort Pierce Police Department Recreation Center

Wednesday, July 16, 10 a.m.

Fort Pierce Police Department Recreation Center, 903 S. 21st St., 34950

Health Fair

Tuesday, July 22, 10 a.m.

Villa Seton, 3300 SW. Chartwell Street, Port St. Lucie 34953

Brain Bus Stop at Food Bank at Havert L. Fenn Center

Saturday, August 2, 8:30 a.m.

Food Bank at Havert L. Fenn Center, 2000 Virginia Ave., Fort Pierce 34982

CAREGIVER SUPPORT GROUPS

St. Lucie County

2nd & 4th Tuesday at 10:30 a.m.

Harbor Place, 3700 SE Jennings Road, Port St. Lucie, 34952

2nd Thursday, 10 a.m.

Golden Ponds Home Community, 1800 Golden Ponds Dr., Fort Pierce 34945



PALM BEACH COUNTY



Olivia Curtis, B.S.

Program Manager | 772.236.7607 | omcurtis@alz.org

For virtual programs see table of contents.

PRIVATE AND PERSONALIZED PROGRAMS

We tailor programs for specific groups such as civic organizations, chambers of commerce, companies, and more. Please reach out to arrange a private, personalized, no-cost program for your group or to invite us to your local event or health fair. Thank you to the following organization(s).

- The Glades Initiative
- The Pines at Delray North
- Abbey Delray South

COMMUNITY EDUCATION & OUTREACH

Brain Bus Stop at JFK Middle School

Saturday, August 9, 8 a.m.

JFK Middle School in Riviera Beach, 1901 Ave. S., Riviera Beach 33404

MCI / EARLY STAGE / YOUNG ONSET SUPPORT GROUPS

Registration required, please call 800.272.3900.

2nd Wednesday, 2 p.m.

Brain Matters Research, Delray Beach 33445

1st Thursday, 1:30 p.m.

Palm Beach Premiere Research, West Palm Beach 33407

2nd Wednesday, 4:15 p.m.

JEM Research Institute, Lake Worth 33462

CAREGIVER SUPPORT GROUPS

2nd Tuesday, 10:30 a.m.

Wellington Bay, 2590 Wellington Bay Dr., Wellington 33414

2nd Wednesday, 1 p.m.

Mae Volen Center 1515 W. Palmetto Park Rd., Boca Raton 33486

3rd Tuesday, 11 a.m.

YMCA Boynton Beach Branch, 9600 S Military Trail, Boynton Beach 33436

3rd Wednesday, 11 a.m.

Palm Beach Premiere Research, 4631 N. Congress Ave., West Palm Beach

3rd Thursday, 3 p.m.

Royal Palm Beach Recreation Center, 100 Sweet Bay Lane, Royal Palm Beach

4th Tuesday, 11 a.m.

Brain Matters Research, 800 NW 17th Ave., Delray Beach 33445

4th Tuesday, 4:15 p.m.

JEM Research Institute, 142 John F Kennedy Dr., Lake Worth 33462

4th Wednesday, 1 p.m.

Mae Volen Center, 1515 W Palmetto Park Rd., Boca Raton 33486

4th Thursday, 6 p.m.

New Day Adult Day Care, 301 Ebbtide Dr., Suite H, N., Palm Beach 33408







Samrah Mitha, MPH

Program Manager | 786.847.7456 | snmitha@alz.org

For virtual programs see table of contents.

PRIVATE AND PERSONALIZED PROGRAMS

We tailor programs for specific groups such as civic organizations, chambers of commerce, companies, and more. Please reach out to arrange a private, personalized, no-cost program for your group or to invite us to your local event or health fair.

- The Carl Shechter Southwest Focal Point Community Center

COMMUNITY EDUCATION & OUTREACH

Brain Bus Stop at Wolk Park

Thursday, June 12, 10 a.m.

Wolk Park, 1080 N.W. 42nd Way, Lauderdale 33313

10 Warning Signs of Alzheimer's

Saturday, July 26, 2 p.m.

Southwest Regional Library, 16835 Sheridan St., Pembroke Pines 33331

Brain Bus Stop at Carter Park

Thursday, October 9, 10 a.m.

Carter Park, 1450 W Sunrise Blvd., Fort Lauderdale 33311

CAREGIVER SUPPORT GROUP

1st and 3rd Saturday, 10 a.m.

John Knox Village, 501 SW Sixth Street, Pompano Beach, 33060

2nd Tuesday, 5:30 p.m.

The Meridian Waterways, 3001 E. Oakland Park Blvd., Ft. Lauderdale 33306



BROWARD COUNTY

3rd Wednesday, 2 p.m.

Northwest Regional Library, 3151 University Drive, Rm 214, Coral Springs 33065

3rd Wednesday, 5:30 p.m.

Covenant Living of Florida, 9215 W. Broward Blvd., Fort Lauderdale 33306



MIAMI-DADE & MONROE COUNTIES

Keith Gibson

Sr. Director, Community Engagement

561.414.2365 | kgibson@alz.org

For virtual programs see table of contents.

PRIVATE AND PERSONALIZED PROGRAMS

We tailor programs for specific groups such as civic organizations, chambers of commerce, companies, and more. Please reach out to arrange a private, personalized, no-cost program for your group or to invite us to your local event or health fair.

- DoubleTree by Hilton Grand Hotel Biscayne Bay

COMMUNITY EDUCATION & OUTREACH

Miami-Dade County

Alzheimer's and Dementia; What Do We Know?

Friday, June 22, 10:30 a.m.

Renaissance Ballrooms, 5910 SW 8th St, Miami 33144

Brain Bus Stop at City of Hialeah Annual Health Fair

Thursday, June 19, 11 a.m.

Milander Center for Arts and Entertainment, 4800 Palm Ave., Hialeah 33012

Brain Bus Stop at Second Baptist Church

Sunday, June 22, 8 a.m.

Second Baptist Church, 11111 Pinkston Drive, Miami 33176

Health Fair

Sunday, June 22, 8 a.m.

Second Baptist Church, 11111 Pinkston Drive, Miami 33176

Understanding Alzheimer's and Dementia

Thursday, July 3, 1:30 p.m.

Pine Woods Villa in Cutler Bay, 8420 SW. 188th Terrace, Cutler Bay 33157

Monroe County

Brain Bus Stop at Murray E. Nelson Government Center

Friday, July 25, 11 a.m.

Murray E. Nelson Gov. Center, 102050 Overseas Hwy., Key Largo 33037

CAREGIVER SUPPORT GROUPS

Miami-Dade County

2nd Monday, 6 p.m., In-Spanish

Coral Gables Branch Library, 3443 Segovia Street, Coral Gables 33134

2nd Thursday, 12:30 p.m.

Northeast Dade, Aventura Library, 2930 Aventura Blvd., Aventura 33180

3rd Tuesday, 10:30 a.m.

Grand Living at Coral Gables, 363 Granello Ave., Coral Gables 33146

4th Tuesday, 7 p.m.

The Palace Suites, 11377 SW 84th St., Miami 33173

4th Thursday, 12:30 p.m.

Coral Gables Adult Activity Center, 2 Andalusia Ave., Coral Gables 33134



COMMUNITY ENGAGEMENT



Keith Gibson

Sr. Director, Community Engagement

561.414.2365 | kgibson@alz.org

Although African Americans are more likely than Whites to have Alzheimer's or another dementia, studies show that they are less likely to have a diagnosis. And delays in diagnosis mean that African Americans, Hispanics and others are not getting treatments when they are most likely to be effective at improving quality of life.

Community Forums

As the American population ages and becomes increasingly more diverse, we are committed to identifying and addressing barriers that may prohibit members of these diverse communities from receiving important Alzheimer's diagnosis, treatment and resources.

Thank you to OurFund for their generous support.



THE INTERSECTION OF IDD AND ALZHEIMER'S



Katie Fahrenbruch

Director, Community Engagement

850.696.0814 | kafahrenbruch@alz.org



DID YOU KNOW

Individuals with **Down syndrome** have a higher than **90% lifetime risk** of developing **Alzheimer's disease**.

Family Support Group for IDD/Down Syndrome & Dementia

- 4th Tuesday, 6 p.m. ET

The Exchange

A place for people with IDD, their families, and their providers to come together to learn about IDD and dementia, brainstorm resources, and explore strategies.

- 3rd Tuesday, 3 p.m. ET

Live Webinars

- The Intersection of IDD & ALZ - Calibrating Our Responses, Wednesday May 28, 2 p.m.



Thank you to generous funding from the Golisano and WITH Foundations.

FOR PROFESSIONALS

HEALTH SYSTEMS AND MEDICAL PROFESSIONALS

Continuing Education on Alzheimer's and Dementia

The Alzheimer's Association offers continuing medical education on Alzheimer's and dementia, including free CE options. These resources help physicians, radiologists, neurologists, nurses, advanced practice nurses, physician assistants, psychiatrists, social workers, pharmacists and other clinicians to remain current in this fast-changing field.

- [CME activities](#)
- [Research webinars](#)

The Alzheimer's and Dementia Care ECHO® Program for Health Systems and Medical Professionals

Project ECHO Series helps improve health outcomes and reduce care barriers. [Read the blog post](#) by Judi Lux. She describes how Project ECHO has enhanced her work as a medical social worker in an underserved rural area.

essentiALZ®

Person-centered dementia care training and certification - from the experts.

Feel confident in providing person-centered dementia care with essentiALZ® — Alzheimer's Association training and certification. This training and certification program offers professional care providers:

- Convenient learning through a self-paced, three-hour online curriculum,
- Practical and comprehensive training based on the Alzheimer's Association Dementia Care Practice Recommendations.
- Recognition through the essentiALZ certification exam.

To learn more, visit alz.org/essentiALZ.

Note: Professionals who complete essentiALZ — Alzheimer's Association Training and Certification are eligible to claim continuing education credit at no additional cost. For disclosure and accreditation information, visit alz.org/essentiALZ-credit.

PUBLIC HEALTH SPOTLIGHT

For public health students, educators and professionals, A Public Health Approach to Dementia is a free, online, interactive curriculum featuring videos, knowledge checks and next steps. Each module also includes a downloadable instructor guide with learning objectives, a list of relevant competencies, teaching aids such as case studies, test questions, video resources and additional learning activities. [Learn more.](#)

FOR RESEARCHERS

RESEARCH

Scientific Conferences

The Alzheimer's Association offers year-round opportunities for the scientific community to network and learn about Alzheimer's and dementia research. Events include the Alzheimer's Association International Conference® (AAIC®) — the world's largest meeting dedicated to advancing dementia science — and a variety of in-person and virtual conferences, symposia and other events. [Learn more.](#)

Welcome to the ISTAART Community

The Alzheimer's Association International Society to Advance Alzheimer's Research and Treatment (ISTAART) is a diverse global network of scientists, clinicians and dementia professionals. Members of this professional organization share common goals: the pursuit of knowledge, collaboration and breakthroughs to advance the research and treatment of Alzheimer's disease and other dementia. When you join ISTAART, you'll have the opportunity to connect with colleagues worldwide, explore avenues for networking and mentorship, and stay on the leading edge of scientific advancements. [Learn more.](#)

MEET OUR RESEARCH CHAMPIONS



Keith Gibson
kgibson@alz.org



Lyndsey Taylor
ltaylor@alz.org



Stefanie Wardlow, M.A.
swardlow@alz.org

Our Research Champions provide high-level updates on the latest in Alzheimer's and dementia research and the Association's role in driving and leading global research initiatives. In addition, they network with Florida researchers and bridge the gap between science and the community. To schedule a virtual or in-person presentation please email one of the above staff members.



CREATE YOUR OWN FUNDRAISER AND OUTSHINE THE DARKNESS OF ALZHEIMER'S.



The Longest Day® is the day with the most light – the summer solstice.

Join us to fight Alzheimer's through a fundraising activity of your choice on a day that works for you.

The funds you raise advance the care, support and research efforts of the Alzheimer's Association®.



Start your fundraiser at
alz.org/tld

Thank you to all our volunteers, sponsors and guests who made the 2025 Gala Season a huge success in Florida!

*Inspire,
Imagine & Hope*
GALA



*Purple
Soirée*
HOOPS & HEROES



For 2026 partnership & volunteer opportunities:
Tampa - Christine Feller at clfeller@alz.org
Orlando - Denise Ward at dlward@alz.org
Miami - Liesl Mejias at limejias@alz.org



- Sept. 27 Space Coast
- Sept. 27 Ocala
- Oct. 4 Orlando
- Oct. 4 The Villages
- Oct. 4 Pasco County
- Oct. 4 South Shore
- Oct. 4 Pinellas County
- Oct. 5 Pensacola
- Oct. 11 Gainesville
- Oct. 18 Tampa
- Nov. 1 Emerald Coast - Okaloosa County
- Nov. 1 Volusia County
- Nov. 1 Treasure Coast
- Nov. 2 Emerald Coast - Panama City
- Nov. 8 Jacksonville
- Nov. 8 Lee County
- Nov. 9 Boca Raton
- Nov. 15 Sarasota County
- Nov. 15 Miami
- Nov. 22 Tallahassee
- Nov. 22 Collier County
- Nov. 22 Palm Beach
- Dec. 6 Polk County
- Dec. 6 Broward County



SCAN ME



Register today
at alz.org/walk

We Need Your Voice

BECOME AN ADVOCATE TODAY!



Because of advocates, we've passed critical legislation and increased federal research funding. Our work isn't done.

We'll train you to advocate. Whatever your experience and availability, we're eager to have you on our advocacy team!

- Meet with elected officials.
- Share your story.
- Spark conversation on social media.
- Engage the media.
- Widen our reach.
- Build relationships with officials and staff.

CONTACT US

Jennifer Braisted | jbraisted@alz.org



@alzadvocacyfl



@alzadvocacyfl



Stay Up to Date

Weekly E-News

Every Wednesday, you'll receive the latest information on Alzheimer's care and support, advances in research, upcoming events in your chapter, as well as inspirational stories and resources for people living with the disease and their caregivers. Sign up at alz.org/enews.



Follow & Tag Us on Social!

Chapter Accounts

Central & North Florida Chapter | @AlzCnfl
[Facebook](#) | [Instagram](#) | [X](#)

Florida Gulf Coast Chapter | @AlzFIGulf
[Facebook](#) | [Instagram](#) | [X](#)

Southeast Florida Chapter | @AlzSefl
[Facebook](#) | [Instagram](#) | [X](#)

Statewide Accounts

LinkedIn	Alzheimer's Association, Florida
TikTok	@AlzFlorida
YouTube	@AlzFlorida



Alz MindFL - Florida's Alzheimer's & Dementia Blog

Another great way to stay up to date is by subscribing to our blog, Alz MindFL. The blog features stories from across Florida including care tips, research updates, volunteer spotlights, inspirational stories, upcoming events and more. Check it out and subscribe at alzmindfl.org.





Advancing Alzheimer's and dementia research starts with you. Help shape the next breakthrough with TrialMatch®.



It takes **everyone** to advance Alzheimer's research.

By joining research studies, you can help us develop the next generation of dementia treatments, diagnostic tools, care and prevention strategies.

Get involved through the Alzheimer's Association TrialMatch® — a tool for people with cognitive impairment, dementia, caregivers and healthy participants to quickly and easily learn more about research opportunities taking place throughout the United States and across the world. Confidentially search hundreds of drug and non-drug studies, sign up, receive email notifications about new opportunities or connect with research teams.

Participate in three easy steps:

1. Begin your journey by signing up on our dedicated TrialMatch platform.
2. Answer 10 simple questions about yourself or the person you're helping to sign up to help personalize your study matches.
3. Review your study matches to explore studies that may be a good fit.

Get started today.



alz.org/TrialMatch | 800.272.3900

trialmatch®
ALZHEIMER'S ASSOCIATION®



**Caring for someone with
Alzheimer's isn't easy.**

Reaching us is.

**24/7 Helpline:
800.272.3900**

VISIT ALZ.ORG



*Click for local support,
information,
resources, upcoming
events and more.*

ALZHEIMER'S  ASSOCIATION®

If you have any inquiries, feel free to reach out to us anytime at 800.272.3900.

We want to recognize the essential contributions of our volunteers and everyone who supports our vision: a world without Alzheimer's and all other dementia®.

*Thank
you!*

ALZHEIMER'S  ASSOCIATION®