



# COMMUNITY PROGRAMS & EVENTS

Alzheimer's Association®  
Florida Chapters  
800.272.3900 | [alz.org](https://www.alz.org)®

## CONTENTS



The Alzheimer's Association® is proud to coordinate services in Florida through three chapters: Central and North Florida, Florida Gulf Coast, and Southeast Florida. We serve Floridians by providing education, awareness, outreach and support.

Please use this guide to explore local programming and events. For additional resources visit Community Resource Finder at [alz.org/crf](https://alz.org/crf).

<b>Welcome .....</b>	<b>03</b>
<b>Meet Our Team .....</b>	<b>04</b>
<b>Information &amp; Support .....</b>	<b>05</b>
<b>Virtual Programs .....</b>	<b>06</b>
<b>On-Demand Programs .....</b>	<b>09</b>
<b>Brain Bus .....</b>	<b>10</b>
<b>Panhandle &amp; Greater Tallahassee .....</b>	<b>11</b>
<b>Greater Gainesville, Jacksonville &amp; Ocala.....</b>	<b>14</b>
<b>Greater Orlando, Flagler &amp; Volusia .....</b>	<b>19</b>
<b>Greater Polk &amp; The Villages .....</b>	<b>23</b>
<b>Citrus, Hernando &amp; East Pasco .....</b>	<b>27</b>
<b>Greater Tampa Bay .....</b>	<b>29</b>
<b>Greater Sarasota &amp; Sun City Center .....</b>	<b>32</b>
<b>Southwest Florida .....</b>	<b>35</b>
<b>Greater Treasure Coast, Brevard &amp; Osceola..</b>	<b>39</b>
<b>Palm Beach County .....</b>	<b>42</b>
<b>Broward County .....</b>	<b>45</b>
<b>Miami-Dade County .....</b>	<b>48</b>
<b>Community Engagement.....</b>	<b>51</b>
<b>The Intersection of IDD and Alzheimer's .....</b>	<b>52</b>
<b>For Professionals .....</b>	<b>53</b>
<b>For Researchers .....</b>	<b>54</b>
<b>Other Ways to Get Involved .....</b>	<b>55</b>

# WELCOME

The Alzheimer's Association, Florida Chapters, serves all 67 counties in our beautiful state. We offer education, outreach, and support to everyone facing Alzheimer's and other dementias within our community, including individuals living with the disease, caregivers, professionals, families, and community members. Our commitment extends to advocating for the needs and rights of those confronted with Alzheimer's disease and promoting essential research towards treatment, prevention, and ultimately, a cure.

We provide programs through various formats: virtually, by telephone, on-demand, and in person. Most of our programs are offered at no charge, with some exceptions for professional programs. Additionally, we tailor programs for specific groups such as civic organizations, chambers of commerce, companies, and more. Please reach out to your local Community Engagement Manager to arrange a private and personalized program for your group or to invite us to your local event or health fair.

## Volunteer with the Alzheimer's Association

Volunteers play a crucial role in positively impacting the lives of those facing Alzheimer's and dementia. By volunteering with the Alzheimer's Association, you become part of a dedicated network working to combat this devastating disease, honor loved ones, and provide care and support to those in need. Learn more at [volunteer.alz.org](https://volunteer.alz.org).

### Explore Various Opportunities:

- Community Educator
- Support Group Facilitator
- Community Connector
- Awareness Champion
- Alzheimer's Advocate
- Brand Ambassador
- Walk to End Alzheimer's Committee
- The Longest Day Committee
- And more!

LEARN MORE



# Meet Our Team

## Care and Support

**Alexis Jacobs, JD, FCCM**  
Panhandle & Greater Tallahassee

**Donna Lee**  
Greater Gainesville, Jacksonville, & Ocala

**Lyndsey Taylor**  
Greater Orlando, Volusia & Flagler

**Stefanie Wardlow, M.A.**  
Citrus and Hernando

**Makeba Huntington-Symons, M.A.**  
Greater Tampa Bay

**Jody Streussnig, BAA**  
Greater Polk & The Villages

**Silvia Caldwell, LPN**  
Greater Sarasota & Sun City Center

**Lisa L. Kiddon**  
Southwest Florida

**Evelyn Espinal, MSW**  
Greater Treasure Coast, Brevard & Osceola

**Olivia Matute, B.S.**  
Palm Beach

**Samrah Mitha, MPH**  
Broward

**Joe H. Baldelomar, Psy.M.**  
Miami-Dade

### Regional

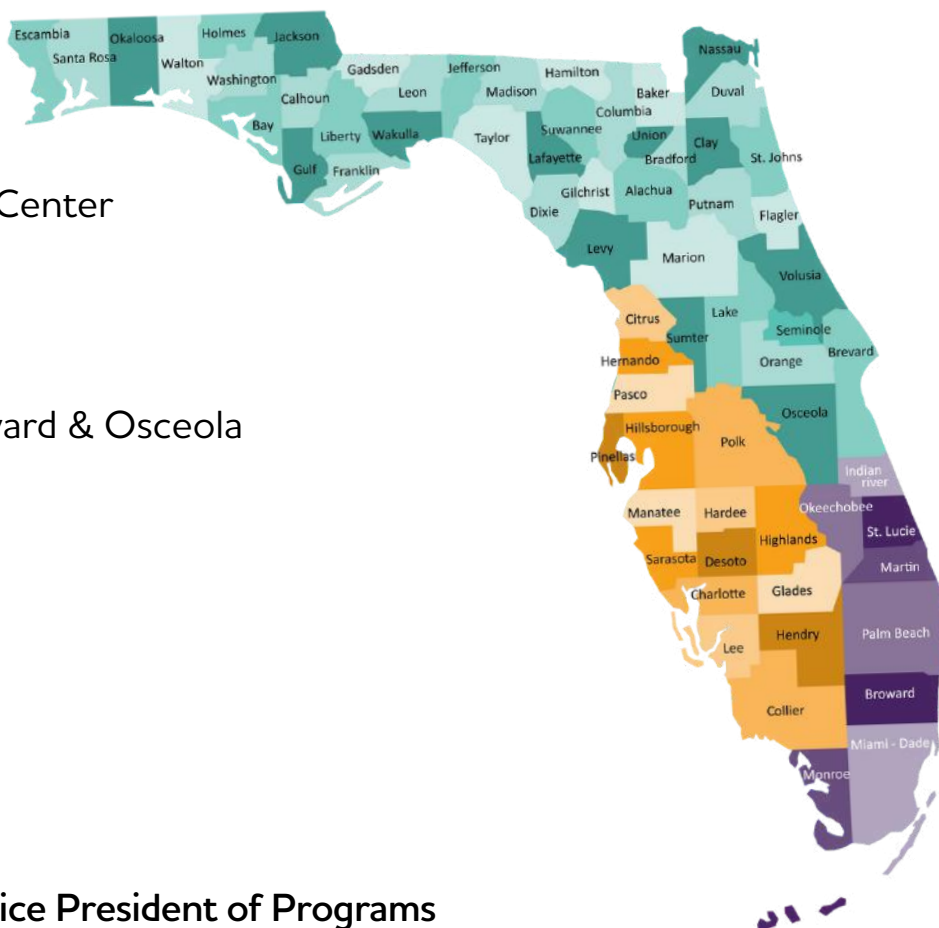
**Julie Shatzer, MSW, LCSW, Vice President of Programs**

**Kasia Sherwin, MNM, Director of Grants and Data**

**Keith Gibson, Senior Director, Community Engagement**

**Katie Fahrenbruch, M.Ed., Director of Community Engagement**

**Stefanie Wardlow, M.A., Senior Community Engagement Manager and Brain Bus**





# INFORMATION & SUPPORT



## Welcome to ALZConnected®

ALZConnected is a dedicated community where people with Alzheimer's, their caregivers, and others affected by the disease can share answers, opinions, ideas, and support. Learn more at [alzconnected.org](https://alzconnected.org)



## Care Consultations

Living with mild cognitive impairment, Alzheimer's disease, or other dementia profoundly impacts multiple generations. Each person has a unique role, spouses, siblings, children of all ages, and friends—all contributing to the care team. This journey demands careful consideration, strategic planning, and above all, a well-thought-out plan.

Care Consultations from the Alzheimer's Association can help you to:

- Navigate difficult caregiving decisions and family issues.
- Assess current needs and anticipate future care challenges.
- Develop an effective care plan and problem-solve barriers.
- Receive supportive listening in a confidential, nonjudgmental environment.

Our professional staff has the knowledge to guide you through a variety of topics. People reach out for many different reasons. Not sure what to ask or where to start? That's okay, too. Just give us a call and we'll guide you from there. The service is free and is at no cost to you.

## Consultations are available several ways:

- **Phone:** Call 800.272.3900 for 24/7 support; use 711 for TRS operator.
- **Live Chat:** Access via the green button on our website, available 8 a.m. to 8 p.m. ET, Monday to Friday. [alz.org/help-support](https://alz.org/help-support).
- **Online Form:** Fill out a [form](#) for assistance, with a response within 24 hours.

## Build an Action Plan with ALZNavigator™

Whether you're a caregiver, a person living with dementia, or someone concerned about memory loss, find the support you need with ALZNavigator. Just answer a few questions about your situation and ALZNavigator will guide you to the resources and tools you need today and throughout each step of the disease — all in one place. [alz.org/alznavigator](https://alz.org/alznavigator)




# VIRTUAL PROGRAMS

## Engage ALZ

**SEPT.  
9**

**THE EMPOWERED CAREGIVER: BUILDING  
FOUNDATIONS OF CAREGIVING**  
12 p.m. ET

 [LEARN MORE](#)

**SEPT.  
16**

**LATEST RESEARCH ADVANCES**  
1 p.m. ET

 [LEARN MORE](#)

**OCT.  
1**

**UNLOCKING POTENTIAL WITH REHABILITATION**  
12 p.m. ET

 [LEARN MORE](#)

**OCT.  
14**

**THE EMPOWERED CAREGIVER: SUPPORTING  
INDEPENDENCE**  
12 p.m. ET

 [LEARN MORE](#)


**NOV.  
11**

**THE EMPOWERED CAREGIVER:  
COMMUNICATING EFFECTIVELY**  
12 p.m. ET

 [LEARN MORE](#)

**DEC.  
9**

**THE EMPOWERED CAREGIVER: RESPONDING  
TO DEMENTIA-RELATED BEHAVIORS**  
12 p.m. ET

 [LEARN MORE](#)





# VIRTUAL PROGRAMS

## VIRTUAL SUPPORT GROUPS

When you're facing difficult times, having a good support network you can turn to for advice and encouragement may help you feel connected and give you a sense of belonging and purpose. Connecting with others like you virtually may help put your own experiences living with the disease in perspective, and provide you with the support and encouragement necessary to move beyond your diagnosis. Call the 24/7 Helpline for instructions on how to log into the virtual meeting.

### Caregiver Support Groups

- 2nd & 4th Tuesday, 10 a.m. ET
- 2nd Tuesday, 7 p.m. ET
- 2nd Wednesday, 12:30 p.m./11:30 a.m. ET
- 3rd Tuesday, 3 p.m. ET
- 3rd Tuesday, 6 p.m. ET
- 3rd Thursday, 12:30 p.m. ET
- 4th Monday, 5 p.m. ET
- 4th Thursday, 9:30 a.m. ET
- 4th Saturday, 3:30 p.m. ET

### Caregiver Support Group in Spanish

- 1st Thursday, 12:30 p.m. ET

### Adult Children Bilingual Support Group

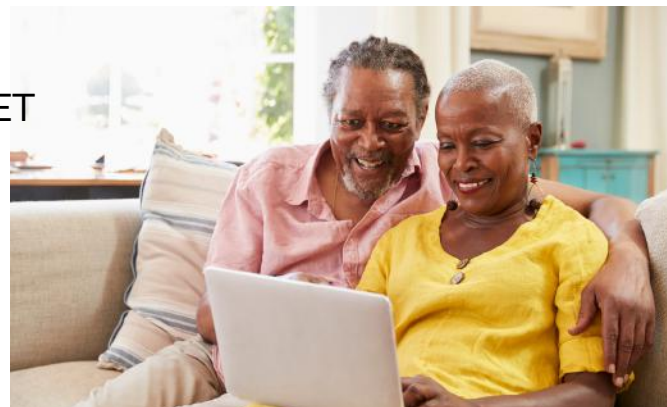
- 4th Thursday, 6 p.m. ET

### Early Stage Support Group

- 1st Friday, 10 a.m. ET
- 3rd Tuesday, 1:30 p.m. ET

### Younger Onset Support Group

- 3rd Wednesday, 11 a.m. ET





# ON-DEMAND PROGRAMS

## EXPLORE RECORDED WEBINARS

Access on-demand education at [Alzprogramsanytime.org](https://alzprogramsanytime.org)

### Featured on-demand webinar

#### Hurricane Preparedness Tips for Caregivers

Learn tips on preparing for potential disaster

[Click here](#) to register and watch the recording.



We have topics under the following categories:



#### Caregiver Resources

Learn strategies to help you care for your loved one living with Alzheimer's or other dementia.



#### Brain Health & Warning Signs

Identify the warning signs of Alzheimer's, learn how to reduce your risk and more.



#### The Empowered Caregiver

This education series teaches caregivers how to navigate the responsibilities of caring for someone living with dementia.



#### Latest Research

Discover the latest advancements in Alzheimer's and dementia research.



#### Community-Specific Resources

Understand how to work with specific communities including those with intellectual and developmental disabilities, deafness or hard of hearing and more.



#### En Español (Spanish Language Videos)

# BRAIN BUS



**Rob Harris**  
Community Engagement  
Manager

The Brain Bus raises awareness of Alzheimer's and related dementias and addresses the benefits of early detection, early diagnosis, brain health and risk reduction. With two mobile units and virtual offerings the Brain Bus program reaches all counties throughout Florida.



**Aramiz Gonzalez**  
Bilingual Community  
Engagement Manager



The Brain Bus is sponsored in part by State of Florida Department of Elder Affairs and the Area Agency on Aging For Southwest Florida.

# PANHANDLE & GREATER TALLAHASSEE

Bay, Calhoun, Escambia, Franklin, Gadsden, Gulf, Hamilton, Holmes, Jackson, Jefferson, Lafayette, Leon, Liberty, Madison, Okaloosa, Santa Rosa, Suwannee, Taylor, Wakulla, Walton & Washington Counties



## **Alexis Jacobs, JD, FCCM**

Community Engagement Manager

407.543.9427 | [amjacobs@alz.org](mailto:amjacobs@alz.org)

For virtual programs see table of contents.

## PRIVATE AND PERSONALIZED PROGRAMS

We tailor programs for specific groups such as civic organizations, chambers of commerce, companies, and more. Please reach out to arrange a private, personalized, no-cost program for your group or to invite us to your local event or health fair.

## COMMUNITY EDUCATION & OUTREACH

### **Bay County**

#### **Dementia Conversations**

Thursday, October 2, 2 p.m.

The Parker Community Building, 1001 W. Park Street; Parker 32404

#### **Brain Bus Stop at Florida State University Panama City**

Thursday, October 9, 11 a.m. CST

Florida State University Panama City, 4750 Collegiate Dr., Panama City 32405

#### **Brain Bus Stop: 10 Warning Signs of Alzheimer's**

Thursday, November 13, 10:30 a.m. CST

Panama City First Baptist Church, 640 Grace Ave, Panama City 32401

### **Calhoun County**

#### **Brain Bus Stop at Sam Atkins Park**

Saturday, October 18, 8 a.m.

Sam Atkins Park, 17316 NW Silas Green St. Blountstown 32424





## **Wakulla County**

### **Brain Bus Stop at Wakulla Community Center**

Saturday, October 18, 10 a.m.

Wakulla Community Center, 318 Shadeville Rd., Crawfordville 32327

## **CAREGIVER SUPPORT GROUPS**

### **Escambia County**

2nd Friday at 1:30 p.m. CST

Azalea Trace, 10100 Hillview Drive, Pensacola 32514

3rd Friday at 10:39 a.m. CST

Olive Baptist Church, 1836 East Olive Road, Pensacola 32514

### **Okaloosa County**

1st Wednesday at 11:30 a.m.

The Meridian at Westwood, 1001 Mar Walt Drive, Ft Walton Beach 32547

1st Wednesday at 2 p.m. CST

Niceville Senior Center, 201 Campbell Drive, Niceville, FL 32578

2nd Wednesday at 2 p.m. CST

Crestview Senior Activity Center, 205 Stillwell Blvd., Crestview 32539

### **Santa Rosa County**

2nd Monday at 9 a.m. CST

Navarre United Methodist Church, 9474 Navarre Pkwy., Navarre 32566

3rd Tuesday at 10 a.m. CST

Beehive, 4702 Gulf Breeze Parkway, Gulf Breeze 32563



# PANHANDLE & GREATER TALLAHASSEE

Bay, Calhoun, Escambia, Franklin, Gadsden, Gulf, Hamilton, Holmes, Jackson, Jefferson, Lafayette, Leon, Liberty, Madison, Okaloosa, Santa Rosa, Suwannee, Taylor, Wakulla, Walton & Washington Counties

## Franklin County

**Brain Bus Stop at Battery Park**

Friday, October 31, 10 a.m.

Battery Park, 1 Bay Ave., Apalachicola 32320

## Holmes County

**Brain Bus Stop at John Clark Park**

Saturday, September 13, 10 a.m. CST

John Clark Park, 1009 Commerce Street, Esto 32425

## Okaloosa County

**Brain Bus Stop at Freedom Tech Center**

Saturday, September 13, 2 p.m.

Freedom Tech Center, 1898 Lewis Turner Blvd., Fort Walton Beach 32547

## Leon County

**Brain Bus Stop at Springtime Tallahassee**

Friday, March 27, 9 a.m.

Springtime Tallahassee Festival, 600 E Park Ave., Tallahassee 32301

## Liberty County

**Brain Bus Stop at Veteran's Memorial Civic Center**

Saturday, September 13, 11 a.m.

Memorial Civic Center, 10405 NW Theo Jacobs Way, Bristol 32321

## Santa Rosa County

**Brain Bus Stop at Clyde L. Gracie Community Center**

Friday, September 19, 8 a.m. CST

Clyde L. Gracie Community Center, 5629 Byrom St., Milton 32570

**Brain Bus Stop at First Baptist Church Milton**

Thursday, September 18, 10 a.m. CST

First Baptist Church Milton, 6797 Caroline St., Milton 32570

## Taylor County

**Brain Bus Stop at Doctor's Memorial Perry Community Health EXPO**

Friday, September 26, 10 a.m.

Doctor's Memorial Hospital, 333 N Byron Butler Pkwy, Perry 32347



# GREATER GAINESVILLE, JACKSONVILLE & OCALA

Alachua, Baker, Bradford, Clay, Columbia, Dixie, Duval, Gilchrist, Levy, Marion, Nassau, Putnam, St. Johns, & Union Counties



## **Donna Lee**

Community Engagement Manager

850.583.8758 | [dmlee@alz.org](mailto:dmlee@alz.org)

For virtual programs see table of contents.

## PRIVATE AND PERSONALIZED PROGRAMS

We tailor programs for specific groups such as civic organizations, chambers of commerce, companies, and more. Please reach out to arrange a private, personalized, no-cost program for your group or to invite us to your local event or health fair. Thank you to the following organization(s).

- Westminster Woods

## COMMUNITY EDUCATION & OUTREACH

### **Alachua County**

#### **Brain Bus Stop at Lubee Bat Conservatory**

Saturday, October 25, 8 a.m.

Lubee Bat Conservatory, 18405 CR-231, Gainesville 32609

#### **Brain Bus Stop at The Florida Gym of UF**

Thursday, November 20, 10 a.m.

The Florida Gym of UF, 250 Gale Lemerand Dr., Gainesville 32611

### **Bradford County**

#### **Brain Bus Stop at Tatem Brother's Park**

Thursday, November 13, 10 a.m.

Tatem Brother's Park, 22598 Park St, Lawtey 32058

### **Columbia County**

#### **Brain Bus Stop at Veteran Stand Down - Lake City**

Wednesday, October 15, 9 a.m.

Veteran Stand Down- Lake City, 2602 SW Main Blvd. Lake City 32035





### **Brain Bus Stop at HCA Florida of Lake City**

Friday, November 14, 9 a.m.

Veterans Summit of Lake City, 340 NW Commerce Dr, Lake City 32055

### **Gilchrist County**

#### **Brain Bus Stop at Hart Springs RV and Campground**

Saturday, October 18, 9:30 a.m.

Hart Springs RV and Campground, 4183 SW 80th Ct., Bell 32619

### **Brain Bus Stop at Legends Center**

Saturday, December 6, 10 a.m.

Legends Center, 5130 Soutel Dr., Jacksonville 32208

### **Marion County**

#### **Brain Bus Stop at Trinity Villas of Ocala**

Tuesday, October 14, 10 a.m.

Trinity Villas of Ocala, 3728 NE 8th Pl, Ocala 34470

### **St. Johns County**

#### **Brain Bus Stop at Dementia Caregiver Conference,**

Saturday, January 10, 9 a.m.

Dementia Caregiver Conference, 179 Marine Street St., Augustine 32084

### **Union County**

#### **Brain Bus Stop at Union County Library**

Tuesday, November 18, 9 a.m.

Union County Library Weekly Senior Program, 250 SE 5th Ave., Lake Butler 32054

### **Brain Bus Stop at Union County Senior Citizens**

Wednesday, November 19, 10 a.m.

Union County Senior Citizens On the Move, 855 SW 6th Ave., Lake Butler 32054

## **CAREGIVER SUPPORT GROUPS**

### **Alachua County**

2nd Friday, Noon

Senior Healthcare Center at Crown Pointe, 2205 NW 40th Terr., Gainesville



# GREATER GAINESVILLE, JACKSONVILLE & OCALA

Alachua, Baker, Bradford, Clay, Columbia, Dixie, Duval, Gilchrist, Levy, Marion, Nassau, Putnam, St. Johns, & Union Counties

## Duval County

1st Wednesday, 4 p.m.

The Windsor at San Pablo, 4000 San Pablo Parkway, Jacksonville 32224

2nd Wednesday, 3:30 p.m.

River Garden Hebrew Home, 11401 Old, St. Augustine Rd., Jacksonville 32258

2nd Wednesday, 6 p.m.

Palms Presbyterian Church, 3410 3rd St. South, Jacksonville Beach 32250

2nd Thursday, 1:30 p.m.

Luther Callaway Public Library, 104 NE 3rd Street, Chiefland 32626

## Marion County

3rd Monday 11 a.m..

Mary Sue Rich Community Center, 1821 NW 21st Ave., Ocala 34475

3rd Friday, 2:30 p.m.

Ocala VA Clinic, 4826 SW 49th Rd., Ocala 34474

\*for Veteran caregivers or caregivers of Veterans









# GREATER ORLANDO, FLAGLER & VOLUSIA

Flagler, Orange, Seminole & Volusia Counties



## **Lyndsey Taylor**

Community Engagement Manager

407.543.9429 | [lyndsey@alz.org](mailto:lyndsey@alz.org)

For virtual programs see table of contents.

## PRIVATE AND PERSONALIZED PROGRAMS

We tailor programs for specific groups such as civic organizations, chambers of commerce, companies, and more. Please reach out to arrange a private, personalized, no-cost program for your group or to invite us to your local event or health fair. Thank you to the following organization(s).

## COMMUNITY EDUCATION & OUTREACH

### **Flagler County**

#### **Brain Bus Stop at Flagler County Fair Grounds**

Sunday, April 26, 11 a.m.

Flagler County Fair Grounds, 150 Sawgrass Rd. Bunnell 32110

### **Orange County**

#### **Brain Bus Stop at Lake Eola Park**

Saturday, October 11, 8:30 a.m.

Lake Eola Park, 512 E Washington St., Orlando 32801

#### **Brain Bus Stop at Southwest Branch Library**

Friday, October 24, 2 p.m.

Southwest Branch Library, 7255 Della Drive, Orlando 32819

### **Seminole County**

#### **Brain Bus Stop at St. Luke's Ministry**

Sunday, October 19, 8:30 a.m.

St. Luke's Ministry Fair, 2021 West State Road 426, Oviedo 32765

#### **Brain Bus Stop at Oviedo on the Park**

Wednesday, October 22, 8 a.m.

Oviedo on the Park, 299 Center Lake Ln., Oviedo 32765



# GREATER ORLANDO, FLAGLER & VOLUSIA

Flagler, Orange, Seminole & Volusia Counties

## Brain Bus Stop at Winter Park Community Center

Saturday, November 15, 9:30 a.m.

50+ FYI resource Expo, 721 W. New England Ave., Winter Park 32789

## Volusia County

### Brain Bus Stop at Port Orange Library

Tuesday, October 7, 10 a.m.

Port Orange Library, 1005 City Center Circle, Port Orange 32129

## MCI / Early Stage / Young On-set Group

Registration required, please call 800.272.3900

## Seminole County

### Art Connects ALZ, early stage Alzheimer's disease art class

Mondays, 1 p.m.

One Senior Place- Greater Orlando, Altamonte Springs 32714

## CAREGIVER SUPPORT GROUPS

## Flagler County

2nd Monday, 11 a.m.

Market Street Assisted Living, 2 Corporate Drive, Palm Coast 32137

2nd and 4th Monday, 3:30 p.m.

St. Elizabeth Ann Seton Catholic Church, 4600 Belle Terre Pkwy., Palm Coast

## Orange County

1st Monday, 7 p.m.

Forest Lake Seventh Day Adventist Church, 515 Harley Lester Ln., Apopka 32703

1st Wednesday, 6 p.m.,

Neurology One, 92 N. Dean Rd., Suite 100, Orlando 32825

\*Bilingual/Spanish Caregiver Support Group

2nd Monday, 4 p.m.

One Senior Place- Greater Orlando, 715 Douglas Ave., Altamonte Springs 32714





1st Thursday, 6 p.m.

Spring Hills Lake Mary, 3655 W Lake Mary Blvd., Lake Mary 32746

3rd Thursday, 3 p.m.

The Mayflower, 1850 Mayflower Ct., Winter Park 32792

### **Volusia County**

1st Tuesday, 12 p.m.

Brookdale Deland, 1210 N. Stone St., Deland 32720

1st Friday, 10:30 a.m.

Port Orange Presbyterian Church, 4662 S. Clyde Morris Blvd., Port Orange

3rd Tuesday at 10:30 a.m.

Aberdeen, 50 Allwood Green Blvd., Ormond Beach 32174

3rd Wednesday, 6 p.m.

The Blake @ LPGA, 1635 N Williamson Blvd., Daytona Beach 32117

3rd Thursday, 10:30 a.m.

Arya at Debary, 838 Signature Dr., Debary 32713





# GREATER POLK & THE VILLAGES

Hardee, Highlands, Lake, Polk & Sumter Counties



**Jody Mathewson, BAA**

Senior Community Engagement Manager

239.294.1729 | [jmathewson@alz.org](mailto:jmathewson@alz.org)

For virtual programs see table of contents.

## PRIVATE AND PERSONALIZED PROGRAMS

We tailor programs for specific groups such as civic organizations, chambers of commerce, companies, and more. Please reach out to arrange a private, personalized, no-cost program for your group or to invite us to your local event or health fair. Thank you to the following organization(s).

## COMMUNITY EDUCATION & OUTREACH

### Hardee County

**Brain Bus Stop at Downtown Wachula**

Saturday, December 6, 6 p.m.

Downtown Wachula, Main St., Wauchula 33873

### Highlands County

**Brain Bus Stop at Sebring Falls**

Thursday, February 26, 9 a.m.

Sebring Falls, 2100 Caribbean Road E. Sebring 33870

### Polk County

**Brain Bus Stop at Polk County Sheriff's Office**

Monday, November 17, 7:30 a.m.

Polk County Sheriff's Office, 1891 Jim Keene Blvd., Winter Haven 33880

**Brain Bus Stop at Mulberry Public Library**

Wednesday, February 11, 10 a.m.

Mulberry Public Library, 905 NE 5th St, Mulberry 33860



# GREATER POLK & THE VILLAGES

Hardee, Highlands, Lake, Polk & Sumter Counties

## Sumter County

Brain Bus Stop at The Brownwood Hotel

Thursday, September 18, 2 p.m.

The Brownwood Hotel & Spa, 3003 Brownwood Blvd, Wildwood 32163

## MCI/EARLY STAGE/YOUNG ONSET SUPPORT GROUPS

Registration required, please call 800.272.3900.

## Sumter County

1st Friday, 10 a.m.

Charter Research, The Villages 32162. \*First Steps, in-person or virtual

## CAREGIVER SUPPORT GROUPS

### Lake County

1st Thursday, 2 p.m.

Alto Senior Living, 1601 Hooks St., Clermont 34711

3rd Wednesday, 1:30 p.m.

Waterman Village, 445 Waterman Ave., Mt. Dora 32757

### Polk County

1st Thursday, 11 a.m.

Methodist Temple, 2700 South Florida Ave., Lakeland 33803

2nd Tuesday, 12 p.m.

Hawthorne Inn, 6150 Lakeland Highlands Rd., Lakeland 33813

\*lunch provided

3rd Monday, 11 a.m.

Schalamar Creek Clubhouse Garden Room, 4500 US-92, Lakeland 33801

3rd Tuesday, 1:30 p.m.

3601 Cypress Gardens Rd., Winter Haven 33884

4th Thursday, 9:30 a.m.

Solivita Baltic Room, 395 Village Dr., Kissimmee 34759

## Sumter County

2nd Thursday, 2 p.m.

Wildwood Community Center, 6500 Powell Rd., Wildwood, FL 34785











# CITRUS & HERNANDO COUNTIES



Stefanie Wardlow, M.A.  
Senior. Community Engagement Manager  
727.270.9862 | [swardlow@alz.org](mailto:swardlow@alz.org)  
For virtual programs see table of contents.

## PRIVATE AND PERSONALIZED PROGRAMS

We tailor programs for specific groups such as civic organizations, chambers of commerce, companies, and more. Please reach out to arrange a private, personalized, no-cost program for your group or to invite us to your local event or health fair.

## COMMUNITY EDUCATION & OUTREACH

### Citrus County

**Brain Bus Stop at Florida Manatee Festival Citrus Avenue in Crystal River**  
Saturday, January 17, 9 a.m.

**Brain Bus Stop at Florida Manatee Festival Citrus Avenue in Crystal River**  
Sunday, January 18, 9 a.m.

### Hernando County

**Brain Bus Stop at Linda Pederson Park**

Friday, March 6, 9 a.m.

Linda Pederson Park, 6400 Shoal Line Boulevard, Spring Hill 34607

**Brain Bus Stop at Linda Pederson Park**

Saturday, March 7, 9 a.m.

Linda Pederson Park, 6400 Shoal Line Boulevard, Spring Hill 34607

**Brain Bus Stop at Linda Pederson Park**

Sunday, March 8, 9 a.m.

Linda Pederson Park, 6400 Shoal Line Boulevard, Spring Hill 34607







# GREATER TAMPA BAY

## Hillsborough, Pinellas & Pasco Counties



### **Makeba Huntington-Symons, M.A.**

Senior Community Engagement Manager  
727.220.4446 [mahuntingtonsymons@alz.org](mailto:mahuntingtonsymons@alz.org)  
For virtual programs see table of contents.

## PRIVATE AND PERSONALIZED PROGRAMS

We tailor programs for specific groups such as civic organizations, chambers of commerce, companies, and more. Please reach out to arrange a private, personalized, no-cost program for your group or to invite us to your local event or health fair.

- Four Seasons MHP

## COMMUNITY EDUCATION & OUTREACH

### **Hillsborough County**

#### **Brain Bus Stop at Lightfoot Recreation Center**

Friday, September 19, 9 a.m.

Lightfoot Recreation Center, 10901 N. 56th Street, Tampa 33617

#### **10 Warning Signs of Alzheimer's**

Friday, September 19, 12 p.m.

Florida Blue, 3758 Park Blvd., Pinellas Park 33781

#### **YMCA Fair**

Monday, September 22, 10 a.m.

YMCA Health Fair, 110 E. Palm Ave., Tampa 33602

#### **YMCA Fair**

Tuesday September 23, 10 a.m.

YMCA Health Fair, 9650 Old Big Bend Rd., Riverview 33578

#### **YMCA Fair**

Wednesday, September 24, 10 a.m.

YMCA Health Fair, 16221 Compton Dr., Tampa 33647





# GREATER TAMPA BAY

## Hillsborough, Pinellas & West Pasco Counties

### Brain Bus Stop at South Tampa YMCA

Thursday, September 25, 10 a.m.

South Tampa YMCA, 4411 S. Himes Ave., Tampa 33611

### Brain Bus Stop at Campo YMCA

Thursday, September 25, 12:30 p.m.

Campo YMCA, 3414 Culbreath Rd., Valrico 33596

### Brain Bus Stop at East Pasco YMCA

Friday, September 26, 10 a.m.

East Pasco YMCA, 37301 Chapel Hill Lp, Zephyrhills 33542

### Brain Bus Stop at Sun City Center Community Hall

Thursday, October 23, 12 p.m.

Sun City Center Community Hall, 1910 Pebble Beach Blvd., Sun City Center 33573

### Healthy Living for your Brain and Body: Tips from the Latest Research

Wednesday, November 19, Noon

BayCare Health Hub, 2470 Bloomingdale Ave., Valrico 33956

### Brain Bus Stop at Brandon Parade of Light

Saturday, December 13, 5:30 p.m.

Brandon Parade of Light, South Lakewood Dr. and Oakfield Dr., Brandon 33511

## Pinellas County

### Healthy Living for Your Brain and Body

Thursday, September 18, 12 p.m.

Largo Community Center, 400 Alt Keene Road, Largo 33771

## CAREGIVER SUPPORT GROUPS

### Hillsborough County

4th Monday 1 p.m.

St. Andrew Presbyterian Church, 1239 W Del Webb Blvd, Rm 2, Sun City Center

2nd Tuesday, 12 p.m.

Hyde Park Methodist, 500 W. Platt Street, Tampa 33606. RSVP required.

(Hybrid, in-person and virtual via Zoom)





3rd Tuesday, 6:30 p.m. & 4th Wednesday at 2 p.m.  
Tessera of Brandon, 1320 Oakfield Drive, Brandon 33511. RSVP required.  
(Hybrid, in-person and virtual via Zoom)

3rd Wednesday, 12 p.m.  
St. James United Methodist, 16202 Bruce B. Downs Blvd., Tampa 33647

1st Thursday, 3 p.m.  
Phyllis Busansky Adult Day Center, 4102 West Spruce Street, Tampa 33607

2nd Thursday, 3 p.m.  
Plant City Adult Day Center, 1205 S. Waller Street, Plant City 33566

3rd Thursday at 3 p.m.  
Wimauma Adult Day Center, 16621 Lagoon Shore Blvd., Wimauma 33598  
\*Respite available

### **Pinellas County**

Every Monday, 9:30 a.m.  
Unity of Palm Harbor, 1960 Tampa Road, Palm Harbor 34683

1st and 3rd Monday, 1 p.m.  
Madonna Ptak Memory Disorders Clinic, 430 Morton Plant St., Ste. 401, Clearwater

2nd Tuesday, 9:30 a.m.  
Largo Public Library, 120 Central Park Drive, Largo 33771

2nd Tuesday, 10 a.m.  
Arden Courts of Palm Harbor, 2895 Tampa Road, Palm Harbor 34684

Every Wednesday, 10 a.m.  
Hale Activity Ctr. Dunedin, 330 Douglas Avenue, Dunedin 34698

2nd Wednesday, 12:15 p.m.  
East Lake Public Library, 4125 E. Lake Road S., Palm Harbor 34685



3rd Wednesday, 6 p.m.

TLC Adult Day Care & Recreation Center, 3970 Tampa Rd., Unit J., Oldsmar 34677

1st and 3rd Thursday, 2 p.m.

St. Anthony's Memory Disorders Center, Professional Office Building  
1201 5th Avenue, N., Suite 309, St. Petersburg 33705

1st Thursday, 6 p.m.

Arden Courts of Largo, 300 Highland Ave., Largo 33770

4th Thursday 10 a.m.

Craft Kafe Downtown 200 Central Avenue, St. Petersburg 33701

4th Thursday 10 a.m.

The Plaza at The Palms of Largo, 385 Alt Keene Rd, Largo 33771

### **Pasco County**

1st Thursday, 10:30 a.m.

Land O' Lakes Public Library, 2818 Collier Pkwy., Land O' Lakes 34639

2nd Thursday, 1 p.m.

Millpond Estates Club House, 7729 Morningdale Drive, New Port Richey 34653

2nd Wednesday, 3 p.m.

Compass Rose of Zephyrhills, 37411 Eiland Blvd., Zephyrhills 33542



# GREATER SARASOTA & SUN CITY CENTER

Desoto, Manatee & Sarasota Counties



## **Silvia Caldwell, LPN**

Community Engagement Manager

727.270.9894 | [sicaldwell@alz.org](mailto:sicaldwell@alz.org)

For virtual programs see table of contents.

## PRIVATE AND PERSONALIZED PROGRAMS

We tailor programs for specific groups such as civic organizations, chambers of commerce, companies, and more. Please reach out to arrange a private, personalized, no-cost program for your group or to invite us to your local event or health fair. Thank you to the following organization(s).

- Harbor Isles Condo Association
- Boar's Head

## COMMUNITY EDUCATION & OUTREACH

### **DeSoto County**

#### **Brain Bus Stop at Desoto County Library**

Thursday, November 20, 2 p.m.

Desoto County Library, 125 N. Hillsborough Ave., Arcadia 34266

### **Manatee County**

#### **Healthy Living for Your Brain and Body**

Wednesday, October 8, 5 p.m.

Lakewood Ranch Library, 16410 Rangeland Pkwy., Bradenton 34211

#### **Waters Edge of Bradenton Fair**

Thursday, October 23, 10 a.m.

Waters Edge of Bradenton, 2015 32nd Ave W, Bradenton 34205

#### **10 Warning Signs of Alzheimer's**

Thursday, November 6, 11 a.m.

Lakewood Ranch Library, 16410 Rangeland Pkwy., Bradenton 34211





# GREATER SARASOTA & SUN CITY CENTER

## Desoto, Manatee & Sarasota Counties

### Healthy Living for Your Brain and Body

Thursday, December 11, 11 a.m.

Lakewood Ranch Library, 16410 Rangeland Pkwy., Bradenton 34211

### Sarasota County

#### Brain Bus Stop at Robert L. Taylor Community Park

Saturday, October 18, Noon

Robert L. Taylor Community Park, 1845 34th St., Sarasota 34234

#### Brain Bus Stop at Booker Middle School

Saturday, November 1, 10 a.m.

Booker Middle School, 2250 Myrtle St., Sarasota 34234

#### Brain Bus Stop at The Del Webb Lakewood Ranch

Sunday, November 9, 8 a.m.

The Del Webb Lakewood Ranch 8100 Lakewood Main St, Lakewood Ranch 34202

#### Brain Bus Stop at San Pedro Catholic Church

Saturday, November 15, Noon

San Pedro Catholic Church, 14380 Tamiami Trail, North Port 34287

#### Brain Bus Stop at GT Bray Rec Center

Saturday, December 13, 4 p.m.

GT Bray Rec Center, 5502 33rd Ave Dr W., Bradenton 34209

## CAREGIVER SUPPORT GROUPS

### Manatee County

1st & 3rd Wednesday, 10 a.m.

Rocky Bluff Library, 6750 US-301, Ellenton 34222

1st Thursday at 10 a.m.

Westminster Bradenton at The Manor, 1700 21st Avenue West, Bradenton 34205

2nd & 4th Thursday, 10 a.m.

Lakewood Ranch YMCA, 5100 Lakewood Ranch Blvd., Bradenton 34211

### Sarasota County

Every Monday at 10 a.m.

Church of Palms, 3224 Bee Ridge Rd., Sarasota 34239

1st Tuesday, 11:30 a.m.

Frances T. Bourne Jacaranda Library, 4143 Woodmere Park Blvd., Venice 34293



3rd Wednesday, 10 a.m.

San Pedro Catholic Church, 14380 Tamiami Trail, North Port 34287

2nd Thursday, 3 p.m.

Town Square Sarasota, 3882 Central Sarasota Pkwy., Sarasota 34238

\*Respite available



# SOUTHWEST FLORIDA

Charlotte, Collier, Glades, Hendry, Lee & Monroe Counties



**Lisa L. Kiddon**

Community Engagement Manager

727.316.8341 | [llkiddon@alz.org](mailto:llkiddon@alz.org)

For virtual programs see table of contents.

## PRIVATE AND PERSONALIZED PROGRAMS

We tailor programs for specific groups such as civic organizations, chambers of commerce, companies, and more. Please reach out to arrange a private, personalized, no-cost program for your group or to invite us to your local event or health fair.

- Freedom Village
- Cascades at Estero

## COMMUNITY EDUCATION & OUTREACH

### Charlotte County

#### Family Services Center Fair

Monday, September 22, 9 a.m.

Family Services Center, 21500 Gibraltar Dr., Port Charlotte 33952.

#### Cypress Falls at the Woodlands Fair

Wednesday, October 1, 2 p.m.

Cypress Falls at the Woodlands, 2605 Arugula Dr., North Port 34289

#### Brain Bus Stop at Taste of Punta Gorda

Friday, March 8, 11 a.m.

Taste of Punta Gorda, 100 Nesbit Street Punta Gorda 33950

### Hendry County

#### Brain Bus Stop at Christ Central Church

Tuesday, October 14, 11 a.m.

Christ Central Church, 813 E. Hickpochee Ave., Labelle 33935





## **Lee County**

### **Brain Bus Stop at Lee Health Coconut Point**

Monday, September 15, 9 a.m.

Lee Health Coconut Point, 23450 Via Coconut Point, Estero 34135

### **10 Warning Signs of Alzheimer's**

Saturday, November 8, 11 a.m.

Sanibel Recreation Center, 3880 Sanibel Captiva Road, Sanibel 33957

### **Brain Bus Stop at Sanibel Recreation Center**

Saturday, November 8, 11 a.m.

Sanibel Recreation Center, 3880 Sanibel Captiva Road, Sanibel 33957

### **Brain Bus Stop at Lee Health Coconut Point**

Thursday, November 13, 8 a.m.

Lee Health Coconut Point, 23450 Via Coconut Point, Estero 34135

### **Brain Bus Stop at Riverwoods Plantation Estero**

Wednesday, January 14, 10 a.m.

Riverwoods Plantation Estero, 4600 Robert E. Lee Blvd., Estero 33928

## **Monroe County**

### **Monroe County Plantation Key Fair**

Wednesday, September 24, 5:30 p.m.

Monroe County Plantation Key Center, 53 High Point Rd, Tavernier 33070

## **CAREGIVER SUPPORT GROUPS**

### **Charlotte County**

2nd Monday, 5:15 p.m.

ActivAge at Chelsea Place, 3626 Tamiami Trl., Port Charlotte 33952

2nd Tuesday, 3 p.m.

Punta Gorda Isles Civic Association, 2001 Shreve St., Punta Gorda 33950

### **Lee County**

1st Tuesday at 10 a.m.

Cypress Cove, 10200 Cypress Cove Drive, Fort Myers 33908



2nd Wednesday at 1 p.m. and/or Last Friday at 10 a.m.  
Good Shepherd United Methodist Church, 2951 Trail Dairy Cir., North Fort Myers

2nd Thursday at 10 a.m.  
The Terraces at Bonita Springs, 26455 S. Tamiami Trail, Bonita Springs 34134

3rd Tuesday at 10 a.m.  
Gulf Coast Village 1333 Santa Barbara Blvd., 4th Floor Craft Room, Cape Coral

3rd Thursday at 10 a.m.  
Lee Healthy Life Center, Coconut Point, 23450 Via Coconut Point, Estero 33928



# GREATER TREASURE COAST, BREVARD & OSCEOLA

Brevard, Indian River, Martin, Okeechobee, Osceola & St. Lucie Counties



## **Evelyn Espinal, BBA**

Community Engagement Manager

305.503.0468 | [eaespinal@alz.org](mailto:eaespinal@alz.org)

For virtual programs see table of contents.

## PRIVATE AND PERSONALIZED PROGRAMS

We tailor programs for specific groups such as civic organizations, chambers of commerce, companies, and more. Please reach out to arrange a private, personalized, no-cost program for your group or to invite us to your local event or health fair.

## COMMUNITY EDUCATION & OUTREACH

### **Brevard County**

#### **Brain Bus Stop at Valiant Air Command Warbird Museum**

Friday, November 7, 9 a.m.

Valiant Air Command Warbird Museum, 6600 Tico Rd, Titusville 32780

### **Martin County**

#### **Brain Bus Stop at Monrovia Park**

Saturday, October 4, 11 a.m.

Monrovia Park, 4455 S.E. Murray Street, Stuart 34997

#### **Brain Bus Stop at Flagger Park**

Sunday, October 26, 9 a.m.

Flagger Park, 221 SW Flagger Ave., Stuart 34994

#### **Brain Bus Stop at Blake Library**

Friday, November 14, Noon

Blake Library, 2351 SE Monterey Rd., Stuart 34996

### **Indian River**

#### **Brain Bus Stop at VNA Family Fun Day**

Saturday, October 4, 11 a.m.

VNA Family Fun Day, 1850 6th Ave, Vero Beach 32960





### **Brain Bus Stop at Indian River Fairgrounds**

Sunday, November 2, 9 a.m.

Indian River Fairgrounds, 7955 58th Ave., Vero Beach 32967

### **Okeechobee County**

#### **Brain Bus Stop at Okeechobee Agri-Civic Center**

Saturday, January 31, 9 a.m.

Okeechobee Agri-Civic Center, 4601 Highway 710, Okeechobee 34974

### **St. Lucie County**

#### **Havert Fenn Center Fair**

Wednesday, September 17, 9 a.m.

Havert Fenn Center, 2000 Virginia Ave., Fort Pierce 34982

#### **St Nicholas Greek Festival**

Saturday, February 21, 12 p.m.

St Nicholas Greek Orthodox Church, 2525 South 25th St. Fort Pierce.34981

## **CAREGIVER SUPPORT GROUPS**

### **Brevard County**

2nd and 4th Tuesday, 10:30 a.m.

Rockledge Presbyterian Church, 921 Rockledge Dr., Rockledge 32955

### **St. Lucie County**

2nd & 4th Tuesday at 10:30 a.m.

Harbor Place, 3700 SE Jennings Road, Port St. Lucie, 34952

2nd Thursday, 10 a.m.

Golden Ponds Home Community, 1800 Golden Ponds Dr., Fort Pierce 34945

.









**Olivia Matute, B.S.**

Community Engagement Manager

772.236.7607 | [omcurtis@alz.org](mailto:omcurtis@alz.org)

For virtual programs see table of contents.

## PRIVATE AND PERSONALIZED PROGRAMS

We tailor programs for specific groups such as civic organizations, chambers of commerce, companies, and more. Please reach out to arrange a private, personalized, no-cost program for your group or to invite us to your local event or health fair. Thank you to the following organization(s).

- The Pines at Delray North

## COMMUNITY EDUCATION & OUTREACH

**Brain Bus Stop at Royal Palm Beach Recreation Center**

Friday, September 19, 10 a.m.

Palm Beach Recreation Center, 100 Sweet Bay Lane, Royal Palm Beach 33411

## MCI / EARLY STAGE / YOUNG ONSET SUPPORT GROUPS

Registration required, please call 800.272.3900.

2nd Wednesday, 2 p.m.

Brain Matters Research, Delray Beach 33445

1st Thursday, 1:30 p.m.

Palm Beach Premiere Research, West Palm Beach 33407

2nd Wednesday, 4:15 p.m.

JEM Research Institute, Lake Worth 33462





## CAREGIVER SUPPORT GROUPS

2nd Tuesday, 10:30 a.m.

Wellington Bay, 2590 Wellington Bay Dr., Wellington 33414

2nd Wednesday, 1 p.m.

Mae Volen Center 1515 W. Palmetto Park Rd., Boca Raton 33486

2nd Thursday, 1:30 p.m.

Palm Beach Premiere Research, 4631 N. Congress Ave., West Palm Beach

3rd Tuesday, 11 a.m.

West Boynton Branch Library, 9451 Jog Road, Boynton Beach 33437

4th Tuesday, 11 a.m.

Brain Matters Research, 800 NW 17th Ave., Delray Beach 33445

4th Tuesday, 4:15 p.m.

JEM Research Institute, 142 John F Kennedy Dr., Lake Worth 33462

4th Wednesday, 1 p.m.

Mae Volen Center, 1515 W Palmetto Park Rd., Boca Raton 33486

4th Thursday, 6 p.m.

New Day Adult Day Care, 301 Ebbtide Dr., Suite H, N., Palm Beach 33408







**Samrah Mitha, MPH**

Community Engagement Manager

786.847.7456 | [snmitha@alz.org](mailto:snmitha@alz.org)

For virtual programs see table of contents.

## PRIVATE AND PERSONALIZED PROGRAMS

We tailor programs for specific groups such as civic organizations, chambers of commerce, companies, and more. Please reach out to arrange a private, personalized, no-cost program for your group or to invite us to your local event or health fair.

- The Carl Shechter Southwest Focal Point Community Center

## COMMUNITY EDUCATION & OUTREACH

### Brain Bus Stop at Carter Park

Thursday, October 9, 10 a.m.

Carter Park, 1450 W Sunrise Blvd., Fort Lauderdale 33311

### Atonement Episcopal Church Fair

Saturday, October 11, 9 a.m.

Atonement Church, 4401 W Oakland Park Blvd, Lauderdale Lakes 33313

### Introduction to Alzheimer's and Dementia

Saturday, October 11, 10:30 a.m.

Atonement Church, 4401 W Oakland Park Blvd, Lauderdale Lakes 33313

## CAREGIVER SUPPORT GROUP

1st and 3rd Saturday, 10 a.m.

John Knox Village, 651 SW 6th St., Pompano Beach, FL 33060

2nd Tuesday, 5:30 p.m.

The Meridian Waterways, 3001 E. Oakland Park Blvd., Ft. Lauderdale 33306





# BROWARD COUNTY

3rd Wednesday, 2 p.m.

Northwest Regional Library, 3151 University Dr., Rm 214, Coral Springs 33065

3rd Wednesday, 5:30 p.m.

Covenant Living of Florida, 9215 W. Broward Blvd., Fort Lauderdale 33306



# MIAMI-DADE COUNTY



## **Joe H. Baldelomar, Psy.M.**

Bilingual Community Engagement Manager

786.761.5524 | [jhbaldelomar@alz.org](mailto:jhbaldelomar@alz.org)

For virtual programs see table of contents.

## **PRIVATE AND PERSONALIZED PROGRAMS**

We tailor programs for specific groups such as civic organizations, chambers of commerce, companies, and more. Please reach out to arrange a private, personalized, no-cost program for your group or to invite us to your local event or health fair.

- Mount Hermon AME Church
- Miami International Airport

## **COMMUNITY EDUCATION & OUTREACH**

### **Miami-Dade County**

#### **InterContinental Hotel Downtown Miami Fair**

Saturday, September 13, 8:30 a.m.

InterContinental Hotel Downtown Miami: 100 Chopin Plaza, Miami 33131

#### **Understanding Alzheimer's and Dementia**

Wednesday, October 15, 11 a.m.

Pinecrest Community Center; 5855 Southwest 111 St., Pinecrest 33156

#### **Intro to Alzheimer's and Dementia**

Wednesday, September 17, 11 a.m.

The Pinecrest Community Center, 5855 SW 111 St., Pinecrest 33156

#### **Overtown Optimist Club Fair**

Saturday, September 27, 9 a.m.

Overtown Optimist Club, 350 NW 12th Street, Miami 33136

#### **Suicide Awareness and Community Resource Fair**

Saturday, September 27, 9 a.m.

Griffing Community Center, 12220 Griffing Boulevard, North Miami 33161



### **Health Fair**

Saturday, October 4, 10 a.m.

Miami Dade College - Hialeah Campus, 1780 W 49th St, Hialeah 33012

### **Milander Center for Arts and Entertainment Fair**

Friday, October 17, 11 a.m.

Milander Center for Arts and Entertainment; 4800 Palm Ave, Hialeah 33012

### **Awareness Presentation**

Friday, October 17, 11 a.m.

Milander Center for Arts and Entertainment; 4800 Palm Ave, Hialeah 33012

### **Living with Low Vision Seminar**

Thursday, October 30, 10 a.m.

Coral Gables Library; 3443 Segovia Street, Coral Gables 33134

### **Brain Bus Stop at Jose Marti Park**

Saturday, November 8, 10 a.m.

Jose Marti Park; 351 SW 4th Ave, Miami 33130

### **Healthy Living for your Brain and Body**

Wednesday, November 12, 11 a.m.

Pinecrest Community Center; 5855 Southwest 111 St. Pinecrest 33156

### **New Advances in Alzheimer's Treatment**

Wednesday, November 19, 11 a.m.

North Dade Regional Library, 2455 NW 183rd St., Miami Gardens 33056

### **Managing Money**

Wednesday, December 17, 11 a.m.

North Dade Regional Library, 2455 NW 183rd St., Miami Gardens 33056

### **Healthy Living for your Brain and Body**

Tuesday, January 21, 11 a.m.

North Dade Regional Library, 2455 NW 183rd St., Miami Gardens 33056



### **Caregiver Stress**

Wednesday, February 18, 11 a.m.

North Dade Regional Library, 2455 NW 183rd St., Miami Gardens 33056

### **Understanding Alzheimer's and Dementia**

Wednesday, March 18, 11 a.m.

North Dade Regional Library, 2455 NW 183rd St., Miami Gardens 33056

### **Understanding Alzheimer's and Dementia**

Wednesday, April 15, 11 a.m.

North Dade Regional Library, 2455 NW 183rd St., Miami Gardens 33056

## **CAREGIVER SUPPORT GROUPS**

### **Miami-Dade County**

2nd Monday, 6 p.m., In-Spanish

Coral Gables Branch Library, 3443 Segovia Street, Coral Gables 33134

2nd Thursday, 12:30 p.m.

Northeast Dade, Aventura Library, 2930 Aventura Blvd., Aventura 33180

4th Tuesday 7 p.m.

The Palace Suites, 11377 SW 84th St., Miami 33173

4th Thursday, 12:30 p.m.

Coral Gables Adult Activity Center, 2 Andalusia Ave., Coral Gables 33134







# COMMUNITY ENGAGEMENT



## **Keith Gibson**

Sr. Director, Community Engagement

561.414.2365 | [kgibson@alz.org](mailto:kgibson@alz.org)

Although African Americans are more likely than Whites to have Alzheimer's or another dementia, studies show that they are less likely to have a diagnosis. And delays in diagnosis mean that African Americans, Hispanics and others are not getting treatments when they are most likely to be effective at improving quality of life.

## **Community Forums**

As the American population ages and becomes increasingly more diverse, we are committed to identifying and addressing barriers that may prohibit members of these diverse communities from receiving important Alzheimer's diagnosis, treatment and resources.

*Thank you to OurFund for their generous support.*





# THE INTERSECTION OF IDD AND ALZHEIMER'S



**Katie Fahrenbruch**

Director, Community Engagement

850.696.0814 | [kafahrenbruch@alz.org](mailto:kafahrenbruch@alz.org)



## DID YOU KNOW

Individuals with **Down syndrome** have a higher than **90% lifetime risk** of developing **Alzheimer's disease**.

## Family Support Group for IDD/Down Syndrome & Dementia

- 4th Tuesday, 6 p.m. ET



*Thank you to generous funding from the Golisano and WITH Foundations.*



## Empowering Professionals in the Fight Against Dementia

### What is ALZPro?

ALZPro is the Alzheimer's Association's hub for professional resources. It unites care resources, research, data platforms, clinical guidelines, continuing education and implementation tools — all on one trusted platform. ALZPro empowers professionals to reduce risk, advance early detection, improve care and expand equitable access.

### The ALZPro Advantage

ALZPro equips you with essential tools to deliver equitable, evidence-informed, person-centered care.

#### ALZPro provides:

- **Instant access to streamlined tools, resources, research**  
and training
- **Timely, relevant scientific findings and clinical insights,**  
tailored for busy professionals  
Practical resources that directly support your work and the people you serve  
The opportunity to connect and collaborate with peers and leading experts
- **Opportunities for continuing education credits, online**  
training and certifications

Join the professionals shaping the future of dementia care at [alz.org/ALZPro](https://alz.org/ALZPro).



# FOR RESEARCHERS

## RESEARCH

### Scientific Conferences

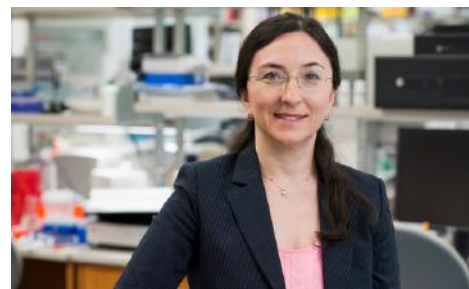
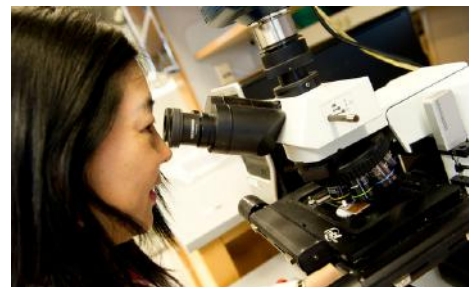
The Alzheimer's Association offers year-round opportunities for the scientific community to network and learn about Alzheimer's and dementia research. Events include the Alzheimer's Association International Conference® (AAIC®) — the world's largest meeting dedicated to advancing dementia science — and a variety of in-person and virtual conferences, symposia and other events. [Learn more.](#)

### Welcome to the ISTAART Community

The Alzheimer's Association International Society to Advance Alzheimer's Research and Treatment (ISTAART) is a diverse global network of scientists, clinicians and dementia professionals. Members of this professional organization share common goals: the pursuit of knowledge, collaboration and breakthroughs to advance the research and treatment of Alzheimer's disease and other dementia. When you join ISTAART, you'll have the opportunity to connect with colleagues worldwide, explore avenues for networking and mentorship, and stay on the leading edge of scientific advancements. [Learn more.](#)

### Grant Programs

The Alzheimer's Association International Research Grant Program (IRGP) funds investigations to advance our understanding of Alzheimer's disease, identify new treatment strategies, improve care for people with dementia and further our knowledge of brain health and disease prevention. [Learn more.](#)







# CREATE YOUR OWN FUNDRAISER AND OUTSHINE THE DARKNESS OF ALZHEIMER'S.

---



The Longest Day® is the day with the most light – the summer solstice.



Join us to fight Alzheimer's through a fundraising activity of your choice on a day that works for you.



The funds you raise advance the care, support and research efforts of the Alzheimer's Association®.

**Start your fundraiser at**  
**[alz.org/tld](http://alz.org/tld)**

# Florida Galas



For sponsorship opportunities and more in the Tampa Bay Area,  
email Christine Feller at [clfeller@alz.org](mailto:clfeller@alz.org)



For sponsorship opportunities and more in Greater Orlando,  
email Denise Ward at [dlward@alz.org](mailto:dlward@alz.org)



For sponsorship opportunities and more in South Florida,  
email Liesl Mejias at [limejias@alz.org](mailto:limejias@alz.org)



- Sept. 27 Space Coast
- Sept. 27 Ocala
- Oct. 4 Orlando
- Oct. 4 The Villages
- Oct. 4 Pasco County
- Oct. 4 South Shore
- Oct. 4 Pinellas County
- Oct. 5 Pensacola
- Oct. 11 Gainesville
- Oct. 18 Tampa
- Nov. 1 Emerald Coast - Okaloosa County
- Nov. 1 Volusia County
- Nov. 1 Treasure Coast
- Nov. 2 Emerald Coast - Panama City
- Nov. 8 Jacksonville
- Nov. 8 Lee County
- Nov. 9 Boca Raton
- Nov. 15 Sarasota County
- Nov. 15 Miami
- Nov. 22 Tallahassee
- Nov. 22 Collier County
- Nov. 22 Palm Beach
- Dec. 6 Polk County
- Dec. 6 Broward County



SCAN ME



Register today  
at [alz.org/walk](https://alz.org/walk)



# We Need Your Voice

## BECOME AN ADVOCATE TODAY!



Because of advocates, we've passed critical legislation and increased federal research funding. Our work isn't done.

We'll train you to advocate. Whatever your experience and availability, we're eager to have you on our advocacy team!

- Meet with elected officials.
- Share your story.
- Spark conversation on social media.
- Engage the media.
- Widen our reach.
- Build relationships with officials and staff.

### CONTACT US

Jennifer Braisted | [jbraisted@alz.org](mailto:jbraisted@alz.org)



@alzadvocacyfl



@alzadvocacyfl



# Stay Up to Date

## Weekly E-News

Every Wednesday, you'll receive the latest information on Alzheimer's care and support, advances in research, upcoming events in your chapter, as well as inspirational stories and resources for people living with the disease and their caregivers. Sign up at [alz.org/enews](https://alz.org/enews).



## Follow & Tag Us on Social!

### Chapter Accounts

Central & North Florida Chapter | @AlzCnfl  
[Facebook](#) | [Instagram](#) | [X](#)

Florida Gulf Coast Chapter | @AlzFIGulf  
[Facebook](#) | [Instagram](#) | [X](#)

Southeast Florida Chapter | @AlzSefl  
[Facebook](#) | [Instagram](#) | [X](#)

### Statewide Accounts

<a href="#">LinkedIn</a>	Alzheimer's Association, Florida
<a href="#">TikTok</a>	@AlzFlorida
<a href="#">YouTube</a>	@AlzFlorida



## Alz MindFL - Florida's Alzheimer's & Dementia Blog

Another great way to stay up to date is by subscribing to our blog, Alz MindFL. The blog features stories from across Florida including care tips, research updates, volunteer spotlights, inspirational stories, upcoming events and more. Check it out and subscribe at [alzmindfl.org](https://alzmindfl.org).





## Advancing Alzheimer's and dementia research starts with you. Help shape the next breakthrough with TrialMatch®.



### It takes **everyone** to advance Alzheimer's research.

By joining research studies, you can help us develop the next generation of dementia treatments, diagnostic tools, care and prevention strategies.

Get involved through the Alzheimer's Association TrialMatch® — a tool for people with cognitive impairment, dementia, caregivers and healthy participants to quickly and easily learn more about research opportunities taking place throughout the United States and across the world. Confidentially search hundreds of drug and non-drug studies, sign up, receive email notifications about new opportunities or connect with research teams.

#### Participate in three easy steps:

1. Begin your journey by signing up on our dedicated TrialMatch platform.
2. Answer 10 simple questions about yourself or the person you're helping to sign up to help personalize your study matches.
3. Review your study matches to explore studies that may be a good fit.

#### Get started today.



[alz.org/TrialMatch](https://alz.org/TrialMatch) | 800.272.3900

**trialmatch**®  
ALZHEIMER'S ASSOCIATION®





Click for local support,  
information,  
resources, upcoming  
events and more.



**VISIT ALZ.ORG**

**Caring for someone with Alzheimer's isn't easy.**

**Reaching us is.**

**24/7 Helpline: 800.272.3900**



## Get empowered in your Alzheimer's journey

Take action with the  
My ALZ Journey app



A diagnosis can feel overwhelming, but My ALZ Journey can help you navigate your diagnosis of Alzheimer's or another dementia and move forward.

Download the app today in the Apple App Store or Google Play Store to learn what to expect and how to plan ahead.

[alz.org/MyALZJourney](https://alz.org/MyALZJourney)

If you have any inquiries, feel free to reach out to us anytime at 800.272.3900.

We want to recognize the essential contributions of our volunteers and everyone who supports our vision: a world without Alzheimer's and all other dementia®.

*Thank  
you!*

ALZHEIMER'S  ASSOCIATION®