



COMMUNITY PROGRAMS & EVENTS

Alzheimer's Association®
Florida Chapters
800.272.3900 | [alz.org](https://www.alz.org)®

CONTENTS



The Alzheimer's Association® is proud to coordinate services in Florida through three chapters: Central and North Florida, Florida Gulf Coast, and Southeast Florida. We serve Floridians by providing education, awareness, outreach and support.

Please use this guide to explore local programming and events. For additional resources visit Community Resource Finder at alz.org/crf.

Welcome	03
Meet Our Team	04
Information & Support	05
Virtual Programs	06
On-Demand Programs	09
Brain Health and Awareness	10
Panhandle & Greater Tallahassee	11
Greater Gainesville, Jacksonville & Ocala.....	15
Greater Orlando, Flagler & Volusia	20
Greater Polk & The Villages	23
Citrus & Hernando	27
Greater Tampa Bay	29
Greater Sarasota & Sun City Center	34
Southwest Florida	37
Greater Treasure Coast, Brevard & Osceola....	40
Palm Beach County	43
Broward County	46
Miami-Dade County	48
Community Engagement.....	52
The Intersection of IDD and Alzheimer's	53
For Professionals	54
Care Providers	54
Public Health	54
For Researchers	55
Other Ways to Get Involved	57

WELCOME

The Alzheimer's Association, Florida Chapters, serves all 67 counties in our beautiful state. We offer education, outreach, and support to everyone facing Alzheimer's and other dementias within our community, including individuals living with the disease, caregivers, professionals, families, and community members. Our commitment extends to advocating for the needs and rights of those confronted with Alzheimer's disease and promoting essential research towards treatment, prevention, and ultimately, a cure.

We provide programs through various formats: virtually, by telephone, on-demand, and in person. Most of our programs are offered at no charge, with some exceptions for professional programs. Additionally, we tailor programs for specific groups such as civic organizations, chambers of commerce, companies, and more. Please reach out to your local Community Engagement Manager to arrange a private and personalized program for your group or to invite us to your local event or health fair.

Volunteer with the Alzheimer's Association

Volunteers play a crucial role in positively impacting the lives of those facing Alzheimer's and dementia. By volunteering with the Alzheimer's Association, you become part of a dedicated network working to combat this devastating disease, honor loved ones, and provide care and support to those in need. Learn more at volunteer.alz.org.

Explore Various Opportunities:

- Community Educator
- Support Group Facilitator
- Community Connector
- Alzheimer's Advocate
- Brand Ambassador
- Event Committees
- And more!

LEARN MORE



Meet Our Team

Care and Support

Alexis Jacobs, JD, FCCM
Panhandle & Greater Tallahassee

Donna Lee
Greater Gainesville, Jacksonville, & Ocala

Lyndsey Taylor
Greater Orlando, Volusia & Flagler

Stefanie Wardlow, M.A.
Citrus & Hernando

Makeba Huntington-Symons, M.A.
Greater Tampa Bay

Jody Streussnig, BAA
Greater Polk & The Villages

Silvia Caldwell, LPN
Greater Sarasota & Sun City Center

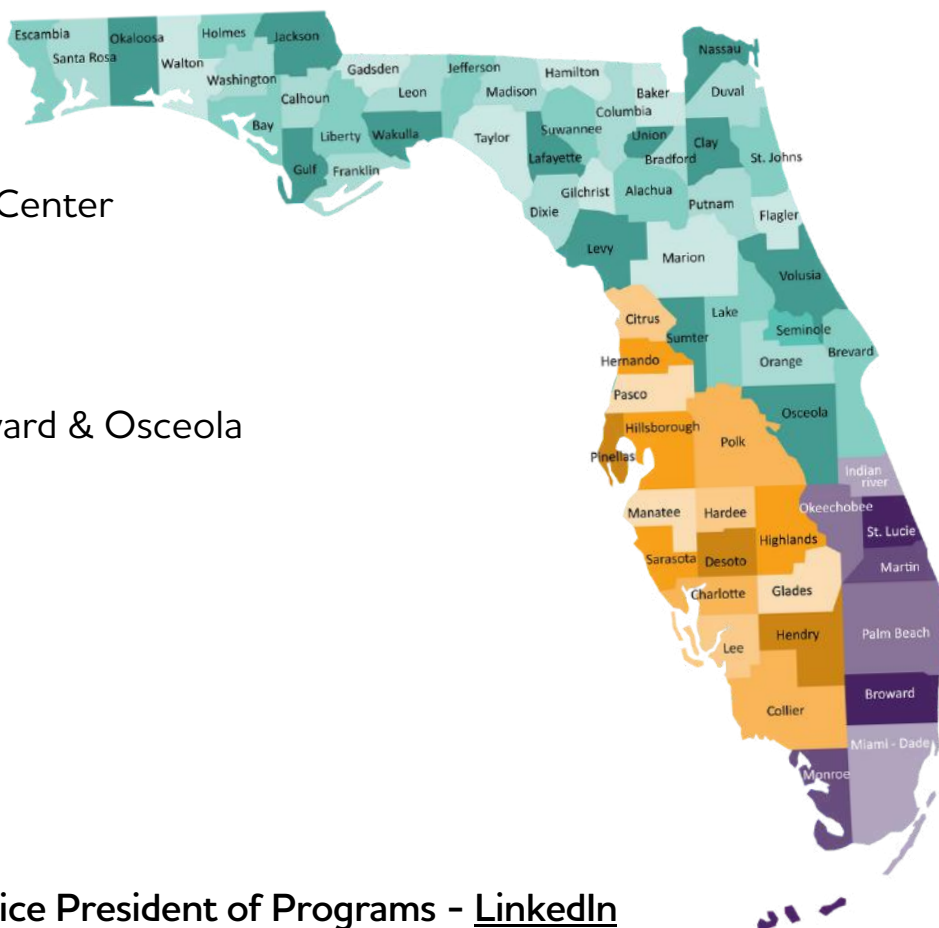
Lisa L. Kiddon
Southwest Florida

Evelyn Espinal, MSW
Greater Treasure Coast, Brevard & Osceola

Olivia Matute, B.S.
Palm Beach

Samrah Mitha, MPH
Broward

Joe H. Baldelomar, Psy.M.
Miami-Dade



Regional

Julie Shatzer, MSW, LCSW, Vice President of Programs - [LinkedIn](#)

Kasia Sherwin, MNM, Director of Grants and Data

Keith Gibson, Senior Director, Community Engagement

Katie Fahrenbruch, M.Ed., Director of Community Engagement

Stefanie Wardlow, M.A., Senior Manager, Community Engagement and Brain Bus

INFORMATION & SUPPORT



Welcome to ALZConnected®

ALZConnected is a dedicated community where people with Alzheimer's, their caregivers, and others affected by the disease can share answers, opinions, ideas, and support. Learn more at alzconnected.org



Care Consultations

Living with mild cognitive impairment, Alzheimer's disease, or other dementia profoundly impacts multiple generations. Each person has a unique role, spouses, siblings, children of all ages, and friends—all contributing to the care team. This journey demands careful consideration, strategic planning, and above all, a well-thought-out plan.

Care Consultations from the Alzheimer's Association can help you to:

- Navigate difficult caregiving decisions and family issues.
- Assess current needs and anticipate future care challenges.
- Develop an effective care plan and problem-solve barriers.
- Receive supportive listening in a confidential, nonjudgmental environment.

Our professional staff has the knowledge to guide you through a variety of topics. People reach out for many different reasons. Not sure what to ask or where to start? That's okay, too. Just give us a call and we'll guide you from there. The service is free and is at no cost to you.

Consultations are available several ways:

- **Phone:** Call 800.272.3900 for 24/7 support; use 711 for TRS operator.
- **Live Chat:** Access via the green button on our website, available 8 a.m. to 8 p.m. ET, Monday to Friday. alz.org/help-support.
- **Online Form:** Fill out a [form](#) for assistance, with a response within 24 hours.

Build an Action Plan with ALZNavigator™

Whether you're a caregiver, a person living with dementia, or someone concerned about memory loss, find the support you need with ALZNavigator. Just answer a few questions about your situation and ALZNavigator will guide you to the resources and tools you need today and throughout each step of the disease — all in one place. alz.org/alznavigator



VIRTUAL PROGRAMS

Engage ALZ

Jan.
13

MANAGING MONEY
12 p.m. ET

[> LEARN MORE](#)

Jan.
29

ALZ TALKS: TAKE CHARGE OF YOUR BRAIN HEALTH
10 a.m. CST

[> LEARN MORE](#)

Feb.
10

UNDERSTANDING ALZHEIMER'S AND DEMENTIA
12 p.m. ET

[> LEARN MORE](#)

Feb.
10

UNDERSTANDING ALZHEIMER'S AND DEMENTIA
6 p.m. CST

[> LEARN MORE](#)

Feb.
26

THE 10 WARNING SIGNS OF ALZHEIMER'S
3 p.m. CST

[> LEARN MORE](#)

Mar.
2

ENTENDER EL ALZHEIMER Y LA DEMENCIA
6 p.m. CST

[> LEARN MORE](#)

Mar.
10

10 WARNING SIGNS OF ALZHEIMER'S
12 p.m. ET

[> LEARN MORE](#)

Apr.
14

HEALTHY LIVING FOR YOUR BRAIN AND BODY
12 p.m. ET

[> LEARN MORE](#)

May
12

IMPACT OF ALZHEIMER'S-PUBLIC SERVICE
12 p.m. ET

[> LEARN MORE](#)

Jun.
9

THE EMPOWERED CAREGIVER: BUILDING FOUNDATIONS OF CAREGIVING
12 p.m. ET

[> LEARN MORE](#)

VIRTUAL PROGRAMS

VIRTUAL SUPPORT GROUPS

When you're facing difficult times, having a good support network you can turn to for advice and encouragement may help you feel connected and give you a sense of belonging and purpose. Connecting with others like you virtually may help put your own experiences living with the disease in perspective, and provide you with the support and encouragement necessary to move beyond your diagnosis.

Caregiver Support Groups

- 2nd & 4th Tuesday, 10 a.m. ET
- 2nd Tuesday, 7 p.m. ET
- 2nd Wed., 12:30 p.m./11:30 a.m. ET
- 3rd Tuesday, 3 p.m. ET
- 3rd Tuesday, 6 p.m. ET
- 3rd Thursday, 12:30 p.m. ET
- 4th Monday, 5 p.m. ET
- 4th Thursday, 9:30 a.m. ET
- 4th Thursday, 1 p.m. ET
- 4th Saturday, 3:30 p.m. ET

Caregiver Support Group in Spanish

- 1st Thursday, 12:30 p.m. ET

Early Stage Support Group

- 1st Friday, 10 a.m. ET
- 3rd Tuesday, 1:30 p.m. ET



Call the 24/7 Helpline at 800.272.3900 for instructions on how to log into the virtual meeting.



ON-DEMAND PROGRAMS

EXPLORE RECORDED PROGRAMS

Transitions in Care

Moving a loved one with dementia into a long-term care community can be emotionally challenging. This program offers tips and support to help caregivers assess needs, explore options, understand coverage and stay involved after the move. [Click to learn more.](#)

Access on-demand webinars at [Alzprogramsanytime.org](https://www.alzprogramsanytime.org)

We have topics under the following categories:



Empowered Caregiver

Learn how to navigate the responsibilities of caring for someone living with dementia.



Brain Health & Warning Signs

Identify the warning signs of Alzheimer's, learn how to reduce your risk and more.



Population-Specific Resources

Understand how to work with specific communities including those with intellectual and developmental disabilities, deafness or hard of hearing and more.



Latest Research

Discover the latest advancements in Alzheimer's and dementia research.



Impact of Alzheimer's & Dementia in the Community

Access education for general audiences, a faith-based audience, corporate/business/provider audiences and public service audience (law enforcement, first responders, EMT and firefighters).



En Español (Spanish Language Videos)

información sobre el Alzheimer y otras demencias.



BRAIN HEALTH AND AWARENESS

BRAIN BUS

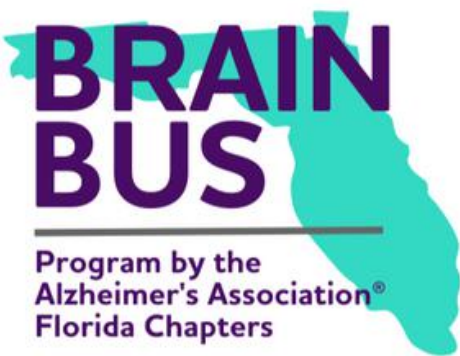


Rob Harris
Community Engagement
Manager

The Brain Bus raises awareness of Alzheimer’s and related dementias and addresses the benefits of early detection, early diagnosis, brain health and risk reduction. With two mobile units and virtual offerings the Brain Bus program reaches all counties throughout Florida. See each county for a full schedule of stops.



Aramiz Gonzalez
Bilingual Community
Engagement Manager



The Brain Bus is sponsored in part by State of Florida Department of Elder Affairs and the Area Agency on Aging For Southwest Florida.

Take charge of your brain health

Make a plan with our free Brain Health Habit Builder.

Brain Health Habit Builder
ALZHEIMER'S ASSOCIATION

START NOW

PANHANDLE & GREATER TALLAHASSEE

Bay, Calhoun, Escambia, Franklin, Gadsden, Gulf, Hamilton, Holmes, Jackson, Jefferson, Lafayette, Leon, Liberty, Madison, Okaloosa, Santa Rosa, Suwannee, Taylor, Wakulla, Walton & Washington Counties



Alexis Jacobs, JD, FCCM

Community Engagement Manager

407.543.9427 | amjacobs@alz.org | [LinkedIn](#)

For virtual programs see table of contents.

PRIVATE AND PERSONALIZED PROGRAMS

We tailor programs for specific groups such as civic organizations, chambers of commerce, companies, and more. Please reach out to arrange a private, personalized, no-cost program for your group or to invite us to your local event or health fair.

- Our Place Restaurant
- FSU Advocacy Center

COMMUNITY EDUCATION & OUTREACH

Hamilton County

Understanding Alzheimer's and Dementia

Friday, January 16, 12 p.m.

UF/IFAS Extension, 1143 NW US Highway 41, Jasper 32052

Brain Bingo

Friday, January 23, 1 p.m.

UF / IFAS Extension, 1143 NW US Highway 41, Jasper 32052

Brain Bus Stop at Stephen Foster Folk Culture Center State Park

Saturday, May 23, 9:30 a.m.

Stephen Foster Folk Center, 11016 Lillian Saunders Dr., White Springs 32096

Brain Bus Stop at Stephen Foster Folk Culture Center State Park

Sunday, May 24, 9:30 a.m.

Stephen Foster Folk Center, 11016 Lillian Saunders Dr., White Springs 32096

Leon County

The Impact of Alzheimer's and Dementia in the Community

Tuesday, January 27, 4 p.m.

The Grove at Canopy, 2601 Crestline Rd., Tallahassee 32308



PANHANDLE & GREATER TALLAHASSEE

Bay, Calhoun, Escambia, Franklin, Gadsden, Gulf, Hamilton, Holmes, Jackson, Jefferson, Lafayette, Leon, Liberty, Madison, Okaloosa, Santa Rosa, Suwannee, Taylor, Wakulla, Walton & Washington Counties

Brain Bus Stop at Springtime Tallahassee

Friday, March 27, 9 a.m.

Springtime Tallahassee Festival, 600 E Park Ave., Tallahassee 32301

Brain Bus Stop at LeMoyne's Chain of Parks Art Festival

Saturday, April 18, 10 a.m.

LeMoyne's Chain of Parks Art Festival 125 N Gadsden St, Tallahassee 32301

Brain Bus Stop at LeMoyne's Chain of Parks Art Festival

Sunday, April 19, 10 a.m.

LeMoyne's Chain of Parks Art Festival 125 N Gadsden St, Tallahassee 32301

Awareness Presentation

Wednesday, July 15, 8:30 a.m.

Tallahassee Senior Center, 1400 N Monroe St, Tallahassee 32303

Liberty County

10 Warning Signs of Alzheimer's

Tuesday, January 20, 10 a.m.

Liberty County Senior Center, 15629 Co Rd 12, Bristol, FL 32321

Madison County

10 Warning Signs of Alzheimer's

Wednesday, April 1, 9:30 a.m.

Madison County Senior Center 1161 SW Harvey Greene Dr., Madison 32340

Wakulla County

Awareness Presentation

Monday, January 12, 10 a.m.

Wakulla Senior Center, 33 Michael Drive, Crawfordville 32327

Brain Bus Brain Bingo

Monday, January 26, 10 a.m.

Wakulla Senior Center, 33 Michael Drive, Crawfordville 32327

CAREGIVER SUPPORT GROUPS

Leon County

3rd Monday at 2 p.m.

The Grove at Canopy, 2601 Crestline Rd, Tallahassee, 32308



Okaloosa County

1st Wednesday at 2 p.m. CST

Niceville Senior Center, 201 Campbell Drive, Niceville, 32578

2nd Wednesday at 2 p.m. CST

Crestview Senior Activity Center, 205 Stillwell Blvd., Crestview 32539





GREATER GAINESVILLE, JACKSONVILLE & OCALA

Alachua, Baker, Bradford, Clay, Columbia, Dixie, Duval, Gilchrist, Levy, Marion, Nassau, Putnam, St. Johns, & Union Counties



Donna Lee

Community Engagement Manager

850.583.8758 | dmlee@alz.org | [LinkedIn](#)

For virtual programs see table of contents.

PRIVATE AND PERSONALIZED PROGRAMS

We tailor programs for specific groups such as civic organizations, chambers of commerce, companies, and more. Please reach out to arrange a private, personalized, no-cost program for your group or to invite us to your local event or health fair. Thank you to the following organization(s).

- UF Medical Guild
- Embassy Suites

COMMUNITY EDUCATION & OUTREACH

Alachua County

Brain Bus Stop at Gateway Grand Hotel and Conference Center

Saturday, January 10, 10 a.m.

Gateway Grand Hotel, 4200 NW 97th Blvd, Gainesville 32606

Brain Bus Stop at HCA Florida North Florida Hospital Senior Center Melrose

Monday, February 2, 2 p.m.

HCA Florida North Florida Hospital Senior, 5818 Centre Street, Melrose 32666

Baker County

Brain Bus Stop at American Legion Post 83

Friday, January 31, 10 a.m.

American Legion Post 83, 150 S. Lowder St., Mcclenny 32063

Bradford County

Brain Bus Stop at HCA Florida North Florida Hospital Starke Emergency Room

Monday, February 2, 9 a.m.

HCA Florida North Florida Hospital, 922 E Call St., Starke 32091



GREATER GAINESVILLE, JACKSONVILLE & OCALA

Alachua, Baker, Bradford, Clay, Columbia, Dixie, Duval, Gilchrist, Levy,
Marion, Nassau, Putnam, St. Johns, & Union Counties

Clay County

Brain Bus Stop at Thrasher Horne Center

Thursday, March 12, 10 a.m.

Thrasher Horne Center, 2900 Thrasher Horne Ave., Orange Park 32065

Dixie County

Brain Bus Stop at Suwannee River Fair Grounds

Saturday, May 2, 9 a.m.

Suwannee River Fair Grounds, 17851 90 Ave., Fanning Springs 32693

Brain Bus Stop at Suwannee River Fair Grounds

Saturday, May 16, 9 a.m.

Suwannee River Fair Grounds, 17851 90 Ave., Fanning Springs 32693

Duval County

Veteran Stand Down and Resource Fair

Saturday, January 24, 8 a.m.

VyStar Veterans Memorial Arena, 300 A Philip Randolph Blvd, Jacksonville 32202

Brain Bus Stop at Adam Herbert University Center

Friday, January 31, 10 a.m.

Adam Herbert University Center, 12000 Alumni Dr., Jacksonville 32224

Brain Bus Stop at Cecil Pines

Friday, March 13, 9 a.m.

Cecil Pines- A Front Porch Community, 6008 Lake Cove Ave., Jacksonville 32221

Brain Bus Stop at Spirit of the Living God Ministries

Saturday, April 4, 10 a.m.

Spirit of the Living God Ministries, 5043 Timothy Lane, Jacksonville 32210

Brain Bus Stop at Jax Community Fair

Saturday, May 23, 2026

Adam W. Herbert University Center, 12000 Alumni Dr, Jacksonville 32224

Levy County

Brain Bus Stop at Dogan S. Cobb Municipal Building

Saturday, January 24, 11 a.m.

Dogan S. Cobb Municipal Building, 660 E.Hathaway Ave., Bronson 32621



Brain Bus Stop at City Hall

Saturday, February 28, 11 a.m.

City Hall, 50 NW Main St., Williston 32696

Brain Bus Stop at Camp Anderson

Thursday, March 26, 10 a.m.

Camp Anderson, 536 NE 168th Ave, Old Town 32680

Marion County**Brain Bus Stop at Web Field**

Monday, January 19, 10 a.m.

Web Field 1501 West Silver Springs Blvd., Ocala 34475

Brain Bus Stop at HCA Florida West Marion Hospital

Wednesday, February 4, 2 p.m.

HCA Florida West Marion Hospital, 4600 SW 46th Ct., Ocala 34474

Brain Bus Stop at Mary Sue Rich Community Center

Friday, February 6, 10 a.m.

Mary Sue Rich Community Center, 1821 NW 21st Ave, Ocala 34475

Brain Bus Stop at HCA Florida Ocala Hospital

Wednesday, February 4, 9 a.m.

HCA Florida Ocala Hospital, 1431 SW 1st Ave., Ocala 34471

Nassau County**Brain Bus Stop at YMCA At Wildlight**

Saturday, June 6, 10 a.m.

YMCA At Wildlight, 251 Breezeway St., Yulee 32097

Putnam County**Brain Bus Stop at HCA Florida Putnam Hospital**

Tuesday, February 3, 10 a.m.

HCA Florida Putnam Hospital, 611 Zeagler Dr., Palatka 32177

Brain Bus Stop at First Presbyterian Church

Thursday, April 30, 9 a.m.

First Presbyterian Church, 123 S. Second Street Palatka 32177



GREATER GAINESVILLE, JACKSONVILLE & OCALA

Alachua, Baker, Bradford, Clay, Columbia, Dixie, Duval, Gilchrist, Levy, Marion, Nassau, Putnam, St. Johns, & Union Counties

St. Johns County

Brain Bus Stop at Dementia Caregiver Conference,

Saturday, January 10, 9 a.m.

Dementia Caregiver Conference, 179 Marine Street St., Augustine 32084

The Impact of Alzheimer's and Dementia in the Community

Saturday, January 10, 10 a.m.

River House, 179 Marine St., St. Augustine 32084

Brain Bus Stop at Renaissance Resort

Friday, February 21, 10 a.m.

Renaissance Resort, 500 S. Legacy Trl St., Augustine 32092

CAREGIVER SUPPORT GROUPS

Alachua County

2nd Friday, Noon

Senior Healthcare Center at Crown Pointe, 2205 NW 40th Terr., Gainesville

Duval County

2nd Wednesday, 3:30 p.m.

River Garden Hebrew Home, 11401 Old, St. Augustine Rd., Jacksonville 32258

2nd Wednesday, 6 p.m.

Palms Presbyterian Church, 3410 3rd St. South, Jacksonville Beach 32250

2nd Thursday, 1:30 p.m.

Luther Callaway Public Library, 104 NE 3rd Street, Chiefland 32626

Marion County

3rd Monday 11 a.m..

Mary Sue Rich Community Center, 1821 NW 21st Ave., Ocala 34475

3rd Friday, 2:30 p.m.

Ocala VA Clinic, 4826 SW 49th Rd., Ocala 34474

*for Veteran caregivers or caregivers of Veterans

St. Johns County

2nd Thursday, 10 a.m.

St Anastasia Catholic Church, 5205 A1A S, St. Augustine 32080



JOIN the Alzheimer's Association

VOLUNTEER OPPORTUNITIES:

- Community connector
- Community educator
- Support group facilitator
- Event committee member
- Advocate
- Brand ambassador
- Data entry volunteer



*Reach out to your local community engagement manager to join our team!

GREATER ORLANDO, FLAGLER & VOLUSIA

Flagler, Orange, Seminole & Volusia Counties



Lyndsey Taylor

Senior Manager Community Engagement

407.543.9429 | lyndsey@alz.org | [LinkedIn](#)

For virtual programs see table of contents.

PRIVATE AND PERSONALIZED PROGRAMS

We tailor programs for specific groups such as civic organizations, chambers of commerce, companies, and more. Please reach out to arrange a private, personalized, no-cost program for your group or to invite us to your local event or health fair. Thank you to the following organization(s).

- The Florida Hotel
- Stetson University

COMMUNITY EDUCATION & OUTREACH

Flagler County

Brain Bus Stop at Flagler County Fair Grounds

Sunday, April 26, 11 a.m.

Flagler County Fair Grounds, 150 Sawgrass Rd. Bunnell 32110

Brain Bus Stop at George Washington Carver Community Center

Saturday, January 10, 11 a.m.

George Washington Carver Community Center, 201 E. Drain St., Bunnell 32110

Brain Bus Stop at FPC High School

Saturday, March 21, 10 a.m.

FPC High School, 5500 State Rte 100, Palm Coast 32164

Seminole County

The Impact of Alzheimer's and Dementia in the Community

Tuesday, January 27, 10:30 a.m.

One Senior Place, 715 Douglas Ave., Altamonte Springs 32714

Volusia County

Brain Bus Stop at Volusia Memorial Funeral Home & Park

Friday, January 23, 9:30 a.m.

Volusia Memorial Funeral Home & Park, 548 N Nova Rd., Ormond Beach 32174



CAREGIVER SUPPORT GROUPS

Flagler County

2nd Monday, 11 a.m.

Market Street Assisted Living, 2 Corporate Drive, Palm Coast 32137

2nd and 4th Monday, 3:30 p.m.

St. Elizabeth Ann Seton Catholic Church, 4600 Belle Terre Pkwy., Palm Coast

Orange County

1st Monday, 7 p.m.

Forest Lake Seventh Day Adventist Church, 515 Harley Lester Ln., Apopka 32703

1st Wednesday, 6 p.m.,

Neurology One, 92 N. Dean Rd., Suite 100, Orlando 32825

*Bilingual/Spanish Caregiver Support Group

2nd Monday, 4 p.m.

One Senior Place- Greater Orlando, 715 Douglas Ave., Altamonte Springs 32714

1st Thursday, 6 p.m.

Spring Hills Lake Mary, 3655 W Lake Mary Blvd., Lake Mary 32746

3rd Thursday, 3 p.m.

The Mayflower, 1850 Mayflower Ct., Winter Park 32792

Volusia County

1st Tuesday, 12 p.m.

Brookdale Deland, 1210 N. Stone St., Deland 32720

1st Friday, 10:30 a.m.

Port Orange Presbyterian Church, 4662 S. Clyde Morris Blvd., Port Orange

3rd Tuesday at 10:30 a.m.

Aberdeen, 50 Allwood Green Blvd., Ormond Beach 32174



3rd Wednesday, 6 p.m.

The Blake @ LPGA, 1635 N Williamson Blvd., Daytona Beach 32117

3rd Thursday, 10:30 a.m.

Arya at Debary, 838 Signature Dr., Debary 32713



GREATER POLK & THE VILLAGES

Hardee, Highlands, Lake, Polk & Sumter Counties



PRIVATE AND PERSONALIZED PROGRAMS

We tailor programs for specific groups such as civic organizations, chambers of commerce, companies, and more. Please reach out to arrange a private, personalized, no-cost program for your group or to invite us to your local event or health fair. Thank you to the following organization(s).

- Maranatha Village
- Highlands Ridge Community Health Center
- Harbor Hills County Club
- Lake Wales Rotary

COMMUNITY EDUCATION & OUTREACH

Hardee County

Brain Bus Stop at Crystal Lake Village

Wednesday, January 14, 9 a.m.

Crystal Lake Village, 2441 Hibiscus Ln., Wauchula 33873

Brain Bus Stop at Peace River Electric Cooperative

Saturday, March 21, 9:30 a.m.

Peace River Electric Cooperative, 210 Methany Rd., Wauchula 33873

Highlands County

Brain Bus Stop at Emmanuel United Church of Christ

Sunday, February 22, 11 a.m.

Emmanuel United Church of Christ, 3115 Hope St., Sebring 33875

Brain Bus Stop at Sebring Falls

Thursday, February 26, 9 a.m.

Sebring Falls, 2100 Caribbean Road E. Sebring 33870



GREATER POLK & THE VILLAGES

Hardee, Highlands, Lake, Polk & Sumter Counties

Awareness Presentation

Friday, January 30, 12 p.m.

Family Extended Care, 5005 Sun N Lake Blvd., Sebring 33872

Brain Bus Stop at The Bluffs of Sebring

Monday, March 23, 8:30 a.m.

The Bluffs of Sebring, 6750 US Hwy 27 N, Sebring 33870

Polk County

Brain Bus Stop at Mulberry Public Library

Wednesday, February 11, 10 a.m.

Mulberry Public Library, 905 NE 5th St, Mulberry 33860

Sumter County

Brain Bus Stop at Wildwood Community Center

Friday, March 13, 9 a.m.

Wildwood Community Center, 6500 Powell Rd., Wildwood 34785

MCI/EARLY STAGE/YOUNG ONSET SUPPORT GROUPS

Registration required, please call 800.272.3900.

Sumter County

1st Friday, 10 a.m.

Charter Research, The Villages 32162. *First Steps, in-person or virtual

CAREGIVER SUPPORT GROUPS

Lake County

3rd Wednesday, 1:30 p.m.

Waterman Village, 445 Waterman Ave., Mt. Dora 32757

Polk County

1st Thursday, 11 a.m.

Methodist Temple, 2700 South Florida Ave., Lakeland 33803

2nd Tuesday, 12 p.m.

Hawthorne Inn, 6150 Lakeland Highlands Rd., Lakeland 33813

*lunch provided

3rd Monday, 11 a.m.

Schalamar Creek Clubhouse Garden Room, 4500 US-92, Lakeland 33801



3rd Tuesday, 1:30 p.m.

3601 Cypress Gardens Rd., Winter Haven 33884

4th Thursday, 9:30 a.m.

Solivita Baltic Room, 395 Village Dr., Kissimmee 34759

Sumter County

2nd Thursday, 2 p.m.

Wildwood Community Center, 6500 Powell Rd., Wildwood, FL 34785





CITRUS & HERNANDO COUNTIES



Stefanie Wardlow, M.A.
Senior Manager, Community Engagement
727.270.9862 | swardlow@alz.org | [LinkedIn](#)
For virtual programs see table of contents.

PRIVATE AND PERSONALIZED PROGRAMS

We tailor programs for specific groups such as civic organizations, chambers of commerce, companies, and more. Please reach out to arrange a private, personalized, no-cost program for your group or to invite us to your local event or health fair.

COMMUNITY EDUCATION & OUTREACH

Citrus County

Brain Bus Stop at Florida Manatee Festival

Saturday, January 17, 9 a.m.

Citrus Avenue, Crystal River 34428

Brain Bus Stop at Florida Manatee Festival

Sunday, January 18, 9 a.m.

Citrus Avenue, Crystal River 34428

Brain Bus Stop at The Chet Cole Enrichment Center

Thursday, April 9, 10 a.m.

The Chet Cole Enrichment Center, 5325 W. Safari Lane, Lecanto 34461

Hernando County

Brain Bus Stop at Brookridge Community Property Owners

Wednesday, January 28, 10 a.m.

Brookridge Community Clubhouse, 8150 Hampton St., Brooksville 34613

Brain Bus Stop at Linda Pederson Park

Multiple days, March 6, 7 & 8, 9 a.m.

Linda Pederson Park, 6400 Shoal Line Boulevard, Spring Hill 34607



CITRUS & HERNANDO COUNTIES



Be a
COMMUNITY CONNECTOR!

Ask me how.

*Reach out to your local community engagement manager to join our team!



GREATER TAMPA BAY

Hillsborough, Pinellas & Pasco Counties



Makeba Huntington-Symons, M.A.

Senior Community Engagement Manager

727.220.4446 | mahuntingtonsymons@alz.org

For virtual programs see table of contents.

PRIVATE AND PERSONALIZED PROGRAMS

We tailor programs for specific groups such as civic organizations, chambers of commerce, companies, and more. Please reach out to arrange a private, personalized, no-cost program for your group or to invite us to your local event or health fair.

- Eventing
- Rasmussen University

COMMUNITY EDUCATION & OUTREACH

Hillsborough County

Health Fair

Saturday, January 24, 10 a.m.

Mid Florida Bank Community Room, 20401 Bruce B. Downs, Tampa 33647

The Empowered Caregiver: Building Foundations of Caregiving

Saturday, January 24, 11 a.m.

First Baptist Church of Progress Village, 8722 Progress Blvd., Tampa 33619

The Empowered Caregiver: Building Foundations of Caregiving & Supporting Independence

Saturday, January 31, 11 a.m.

First Baptist Church of Progress Village, 8722 Progress Blvd., Tampa 33619

The Empowered Caregiver: Communicating Effectively

Saturday, February 7, 11 a.m.

First Baptist Church of Progress Village, 8722 Progress Blvd., Tampa 33619

The Empowered Caregiver: Responding to Dementia-Related Behaviors

Saturday, February 21, 11 a.m.

First Baptist Church of Progress Village, 8722 Progress Blvd., Tampa 33619



GREATER TAMPA BAY

Hillsborough, Pinellas & Pasco Counties

Brain Bus Stop at Alzheimer's Institute University of South Florida

Saturday, March 7, 10 a.m.

University of South Florida 4001 E. Fletcher Avenue Tampa 33613

Pinellas County

Understanding Alzheimer's and Dementia

Saturday, January 24, 10 a.m.

Macedonia Missionary Baptist Church, 450 East Oakwood St., Tarpon Springs 34689

Brain Bus Stop at Central Park Performing Arts Center

Thursday, January 29, 10 a.m.

Central Park Performing Arts Center, 105 Central Park Dr., Largo 33771

Brain Bus Stop at Dunedin History Museum

Saturday, March 28, 3 p.m.

Dunedin History Museum/Railroad Ave West, 349 Main St., Dunedin 34698

CAREGIVER SUPPORT GROUPS

Hillsborough County

4th Monday 1 p.m.

St. Andrew Presbyterian Church, 1239 W Del Webb Blvd, Rm 2, Sun City Center

2nd Tuesday, 12 p.m.

Hyde Park Methodist, 500 W. Platt Street, Tampa 33606. RSVP required.

(Hybrid, in-person and virtual via Zoom)

3rd Tuesday, 6:30 p.m. & 4th Wednesday at 2 p.m.

Tessera of Brandon, 1320 Oakfield Drive, Brandon 33511. RSVP required.

(Hybrid, in-person and virtual via Zoom)

3rd Wednesday, 12 p.m.

St. James United Methodist, 16202 Bruce B. Downs Blvd., Tampa 33647

1st Thursday, 3 p.m.

Phyllis Busansky Adult Day Center, 4102 West Spruce Street, Tampa 33607

1st Thursday, 6 p.m.

Arden Courts of Largo, 300 Highland Ave., Largo 33770



2nd Thursday, 3 p.m.

Plant City Adult Day Center, 1205 S. Waller Street, Plant City 33566

3rd Thursday at 3 p.m.

Wimauma Adult Day Center, 16621 Lagoon Shore Blvd., Wimauma 33598

*Respite available

Pinellas County

Every Monday, 9:30 a.m.

Unity of Palm Harbor, 1960 Tampa Road, Palm Harbor 34683

1st and 3rd Monday, 1 p.m.

Madonna Ptak Memory Disorders Clinic, 430 Morton Plant St., Ste. 401, Clearwater

Every Wednesday, 10 a.m.

Hale Activity Ctr. Dunedin, 330 Douglas Avenue, Dunedin 34698

1st, 2nd, & 3rd Thursday, 2 p.m.

St. Anthony's Memory Disorders Center, Professional Office Building

1201 5th Avenue, N., Suite 309, St. Petersburg 33705

2nd Tuesday, 9:30 a.m.

Largo Public Library, 120 Central Park Drive, Largo 33771

2nd Tuesday, 10 a.m.

Arden Courts of Palm Harbor, 2895 Tampa Road, Palm Harbor 34684

2nd Wednesday, 12:15 p.m.

East Lake Public Library, 4125 E. Lake Road S., Palm Harbor 34685

3rd Wednesday, 6 p.m.

TLC Adult Day Care & Recreation Center, 3970 Tampa Rd., Unit J., Oldsmar 34677



GREATER TAMPA BAY

Hillsborough, Pinellas & Pasco Counties

4th Thursday 10 a.m.

Craft Kafe Downtown 200 Central Avenue, St. Petersburg 33701

4th Thursday 10 a.m.

The Plaza at The Palms of Largo, 385 Alt Keene Rd, Largo 33771

Pasco County

1st Thursday, 10 a.m.

Land O' Lakes Public Library, 2818 Collier Pkwy., Land O' Lakes 34639

2nd Tuesday, 6 p.m.

Regency Park Library, 9701 Little Rd., New Port Richey, 34654

2nd Thursday, 1 p.m.

New Port Richey Public Library, 5939 Main St, New Port Richey, FL 34652

2nd Wednesday, 3 p.m.

Compass Rose of Zephyrhills, 37411 Eiland Blvd., Zephyrhills 33542

3rd Wednesday, 6 p.m.

Land O' Lakes United Methodist Church, 6209 Land O'Lakes Blvd., Land O' Lakes





GREATER SARASOTA & SUN CITY CENTER

Desoto, Manatee & Sarasota Counties



Silvia Caldwell, LPN

Community Engagement Manager

727.270.9894 | sicaldwell@alz.org | [LinkedIn](#)

For virtual programs see table of contents.

PRIVATE AND PERSONALIZED PROGRAMS

We tailor programs for specific groups such as civic organizations, chambers of commerce, companies, and more. Please reach out to arrange a private, personalized, no-cost program for your group or to invite us to your local event or health fair. Thank you to the following organization(s).

- Live Oak RV Park
- Waterlefe Golf & River Club
- Leisure Lake
- Pleasant Park
- Paradise Bay
- Heather Hills
- Discovery Village
- Grand Villa of Sarasota
- Meadows Community Association
- West Manatee Fire District

COMMUNITY EDUCATION & OUTREACH

DeSoto County

Brain Bus Stop at Turner Agri-Civic Center

Tuesday, January 13, 4 p.m.

Turner Agri-Civic Center, 250 NE Roan St. Arcadia 34266

Manatee County

Manatee County Falls Prevention Expo

Wednesday, January 28, 10 a.m.

State College of Florida, 5840 26th Street West, Bradenton 34207

Healthy Living for Your Brain and Body

Thursday, January 29, 11 a.m.

Manatee County Public Library System, 6081 26th Street, West Bradenton 34208



Brain Bus Stop at Safety Jam – Health & Traffic Safety Expo

Saturday, February 28, 10 a.m.

Bradenton State College of Florida, 5840 26th St. W., Bradenton 34207

Manatee County Health & Wellness Expo 2026

Tuesday, April 7, 4 p.m.

Bradenton Area Convention Center, 1 Haben Blvd, Palmetto 34221

Sarasota County

10 Warning Signs of Alzheimer's

Tuesday, February 17, 12 p.m.

Grand Park Sarasota, 10012 Canaveral Cir., Sarasota 34241

10 Warning Signs of Alzheimer's

Friday, February 27, 12 p.m.

Grand Park Sarasota, 10012 Canaveral Cir., Sarasota 34241

Brain Bus Stop at Robarts Arena

Friday, March 13, 5 p.m.

Robert's Arena - Sarasota Fair, 3000 Ringling Blvd., Sarasota 34237

Brain Bus Stop at Robarts Arena

Monday, March 17, 4 p.m.

Robert's Arena - Sarasota Fair, 3000 Ringling Blvd., Sarasota 34237

Caregiver Support Groups

DeSoto County

2nd Thursday, 12 p.m.

Senior Friendship Center, 917 N Arcadia Ave., Arcadia 34266

Manatee County

1st & 3rd Wednesday, 10 a.m.

Emmanuel Baptist Church, 8305 US-301, Parrish 34219

1st Thursday at 10 a.m.

Westminster Bradenton at The Manor, 1700 21st Avenue West, Bradenton 34205

2nd & 4th Thursday, 10 a.m.

Lakewood Ranch YMCA, 5100 Lakewood Ranch Blvd., Bradenton 34211



GREATER SARASOTA & SUN CITY CENTER

Desoto, Manatee & Sarasota Counties

Sarasota County

Every Monday at 10 a.m.

Church of Palms, 3224 Bee Ridge Rd., Sarasota 34239

1st Tuesday, 11:30 a.m.

Frances T. Bourne Jacaranda Library, 4143 Woodmere Park Blvd, Venice 34293

3rd Wednesday, 10 a.m.

San Pedro Catholic Church, 14380 Tamiami Trail, North Port 34287



SOUTHWEST FLORIDA

Charlotte, Collier, Glades, Hendry, Lee & Monroe Counties



Lisa L. Kiddon

Community Engagement Manager

727.316.8341 | llkiddon@alz.org | [LinkedIn](#)

For virtual programs see table of contents.

PRIVATE AND PERSONALIZED PROGRAMS

We tailor programs for specific groups such as civic organizations, chambers of commerce, companies, and more. Please reach out to arrange a private, personalized, no-cost program for your group or to invite us to your local event or health fair.

- Cascades at Estero
- Riverwoods Plantation
- Island Walk
- Hilton Naples

COMMUNITY EDUCATION & OUTREACH

Charlotte County

Brain Bus Stop at Fisherman Village

Saturday, February 7, 10 a.m.

Fisherman's Village, 1200 W Retta Esplanade, Punta Gorda 33950

Brain Bus Stop at Taste of Punta Gorda

Friday, March 8, 11 a.m.

Taste of Punta Gorda, 100 Nesbit Street Punta Gorda 33950

Collier County

Brain Bus Stop at Saint John the Evangelist Catholic Church

Tuesday, January 22, 8 a.m.

Preparing for Aging Symposium, 625 111th Ave. N, Naples 34108

Brain Bus Stop at Greyhawk

Monday, January 26, 10 a.m.

Greyhawk, 9275 Horned Lake Dr., Naples 34120



SOUTHWEST FLORIDA

Charlotte, Collier, Glades, Hendry, Lee & Monroe Counties

Impact of Alzheimer's and Dementia in the Community - Faith Based

Tuesday, February 3, 10 a.m.

St Marks Episcopal Church, 1101 N Collier Blvd. Marco Island 34145

Lee County

Brain Bus Stop at Riverwoods Plantation Estero

Wednesday, January 14, 10 a.m.

Riverwoods Plantation Estero, 4600 Robert E. Lee Blvd., Estero 33928

Brain Bus Stop at Bonita Shores Club House

Saturday, January 24, 10:30 a.m.

Bonita Shores Club House, 315 West Ave., Bonita Springs 34134

Brain Bus Stop at Elks Club

Sunday, February 1, 1 p.m.

Elks Club, 3231 Coconut Rd., Bonita Springs 34134

Brain Bus Stop at Lee Health Sports Complex

Monday, February 16, 10 a.m.

Lee Health Sports Complex, 14100 Six Mile Cypress Parkway, Ft. Myers 33912

Brain Bus Stop at Preparing for Aging Symposium

Tuesday, February 24, 8 a.m.

Gulf Coast Church of Christ, 9550 6 Mile Cypress Pkwy., Fort Myers 33966

CAREGIVER SUPPORT GROUPS

Charlotte County

2nd Monday, 5:15 p.m.

ActivAge at Chelsea Place, 3626 Tamiami Trl., Port Charlotte 33952

2nd Tuesday, 4 p.m.

Punta Gorda Isles Civic Association, 2001 Shreve St., Punta Gorda 33950

Lee County

1st Tuesday at 10 a.m.

Cypress Cove, 10200 Cypress Cove Drive, Fort Myers 33908



2nd Wednesday at 1 p.m. and 4th Friday at 10 a.m.
Good Shepherd United Methodist Church, 2951 Trail Dairy Cir., North Fort Myers

2nd Thursday at 10 a.m.
The Terraces at Bonita Springs, 26455 S. Tamiami Trail, Bonita Springs 34134

3rd Tuesday at 10 a.m.
Gulf Coast Village 1333 Santa Barbara Blvd., 4th Floor Craft Room, Cape Coral

3rd Thursday at 10 a.m.
Lee Healthy Life Center, Coconut Point, 23450 Via Coconut Point, Estero 33928



GREATER TREASURE COAST, BREVARD & OSCEOLA

Brevard, Indian River, Martin, Okeechobee, Osceola & St. Lucie Counties



Evelyn Espinal, BBA

Community Engagement Manager

305.503.0468 | eaespinal@alz.org | [LinkedIn](#)

For virtual programs see table of contents.

PRIVATE AND PERSONALIZED PROGRAMS

We tailor programs for specific groups such as civic organizations, chambers of commerce, companies, and more. Please reach out to arrange a private, personalized, no-cost program for your group or to invite us to your local event or health fair.

- Eventing
- UPS

COMMUNITY EDUCATION & OUTREACH

Brevard County

Brain Bus Stop at Merritt Island

Friday, February 13, 9 a.m.

Merritt Square Mall, 777 E Merritt Island Cswy., Merritt Island 32952

Indian River

Brain Bus Stop at Intergenerational Recreation Center

Saturday, February 7, 10 a.m.

Intergenerational Recreation Center, 1590 9th St SW, Vero Beach 32962

Brain Bus Stop at Indian River County Fairgrounds and Expo Center

Thursday, April 23, 9:30 a.m.

Indian River County Fairgrounds and Expo, 7955 58th Ave., Vero Beach 32967

Okeechobee County

Brain Bus Stop at Okeechobee Agri-Civic Center

Saturday, January 31, 9 a.m.

Okeechobee Agri-Civic Center, 4601 Highway 710, Okeechobee 34974



Osceola County

Brain Bus Stop at UF Extension Services

Saturday, April 11, 10 a.m.

UF Extension Services, 1921 Kissimmee Valley Lane, Kissimmee 34744

St. Lucie County

Brain Bus Stop at St Lucie Council on Aging

Thursday, January 15, 10 a.m.

St Lucie Council on Aging, 1505 Orange Ave, Fort Pierce 34950

Impact of Alzheimer's-Corporate

Friday, February 13, 11:30 a.m.

FSU, 2498 S. 35 St., Fort Pierce 34981

St Nicholas Greek Festival

Saturday, February 21, 12 p.m.

St Nicholas Greek Orthodox Church, 2525 South 25th St. Fort Pierce.34981

CAREGIVER SUPPORT GROUPS

Brevard County

2nd and 4th Tuesday, 10:30 a.m.

Rockledge Presbyterian Church, 921 Rockledge Dr., Rockledge 32955

St. Lucie County

2nd & 4th Tuesday at 10:30 a.m.

Harbor Place, 3700 SE Jennings Road, Port St. Lucie, 34952

2nd Thursday, 10 a.m.

Golden Ponds Home Community, 1800 Golden Ponds Dr., Fort Pierce 34945





PALM BEACH COUNTY



Olivia Matute, B.S.

Community Engagement Manager

772.236.7607 | omcurtis@alz.org | [LinkedIn](#)

For virtual programs see table of contents.

PRIVATE AND PERSONALIZED PROGRAMS

We tailor programs for specific groups such as civic organizations, chambers of commerce, companies, and more. Please reach out to arrange a private, personalized, no-cost program for your group or to invite us to your local event or health fair. Thank you to the following organization(s)

- Lyndsey Davis Community Center
- Comprehensive Center for Brain Health UM
- Prime Expos
- Villagio Reserve
- Baywinds

COMMUNITY EDUCATION & OUTREACH

Health Fair

Saturday, January 24, 10 a.m.

St. John Baptist Church, 615 NW 1st St., Delray Beach 33444

Health Fair

Thursday, February 5, 5 p.m.

Hester Center 1901 N. Seacrest Blvd, Boynton Beach FL 33435

Brain Bus Stop at Eddie Lee Rhodes Gymnasium

Saturday, February 7, 1 p.m.

Eddie Lee Rhodes Gymnasium, 360 E. Main St., Pahokee 33476

Health Fair

Tuesday, March 24, 8 a.m.

Florida Atlantic University, 777 Glades Rd., Boca Raton 33431



PALM BEACH COUNTY

Brain Bus Stop at Torry Island

Saturday, April 18, 10 a.m.

Torry Island, 5000 West Canal Street North, Belle Glade 33430

Brain Bus Stop at Hilton Palm Beach Airport

Thursday, May 14, 10:30 a.m.

Hilton Palm Beach Airport, 150 Australian Ave., West Palm Beach 33406

MCI / EARLY STAGE / YOUNG ONSET SUPPORT GROUPS

Registration required, please call 800.272.3900.

2nd Wednesday, 2 p.m.

Brain Matters Research, Delray Beach 33445

1st Thursday, 1:30 p.m.

Palm Beach Neurology & Premiere Research Institute, West Palm Beach 33407

2nd Wednesday, 4 p.m.

JEM Research Institute, Lake Worth 33462

CAREGIVER SUPPORT GROUPS

2nd Tuesday, 10:30 a.m.

Wellington Bay, 2590 Wellington Bay Dr., Wellington 33414

2nd Wednesday, 1 p.m.

Mae Volen Center 1515 W. Palmetto Park Rd., Boca Raton 33486

2nd Thursday, 1:30 p.m.

Palm Beach Premiere Research, 4631 N. Congress Ave., West Palm Beach

3rd Tuesday, 11 a.m.

YMCA, 9600 South Military Trail, Boynton Beach 33436

4th Tuesday, 11 a.m.

Brain Matters Research, 800 NW 17th Ave., Delray Beach 33445

4th Tuesday, 4:15 p.m.

JEM Research Institute, 142 John F Kennedy Dr., Lake Worth 33462



4th Wednesday, 1 p.m.

Mae Volen Center, 1515 W Palmetto Park Rd., Boca Raton 33486

4th Thursday, 6 p.m.

New Day Adult Day Care, 301 Ebbtide Dr., Suite H, N., Palm Beach 33408





Samrah Mitha, MPH

Community Engagement Manager

786.847.7456 | snmitha@alz.org | [LinkedIn](#)

For virtual programs see table of contents.

PRIVATE AND PERSONALIZED PROGRAMS

We tailor programs for specific groups such as civic organizations, chambers of commerce, companies, and more. Please reach out to arrange a private, personalized, no-cost program for your group or to invite us to your local event or health fair.

- BSO- Lauderdale by the Sea District
- Prime Expos
- The Meadows of Crystal Lake
- Century Village East- Deerfield
- Leisureville Pompano
- Kings Point- Tamarac
- Colony Point
- YMCA Hollywood
- YMCA Hallandale
- YMCA Fort Lauderdale
- David Posnack Jewish Community Center
- Hopewell Baptist Church

COMMUNITY EDUCATION & OUTREACH

Brain Bus Stop at Nova Southeastern University

Saturday, February 14, 12 p.m.

Nova Southeastern University, 3625 College Avenue, Davie 33314

Brain Bus Stop at St. Ann's Episcopal Church

Saturday, February 21, 10 a.m.

St. Ann's Episcopal Church, 705 NW 1st Ave, Hallandale Beach 33009

CAREGIVER SUPPORT GROUP

1st and 3rd Saturday, 10 a.m.

John Knox Village, 651 SW 6th St., Pompano Beach, FL 33060



2nd Tuesday, 5:30 p.m.

The Meridian Waterways, 3001 E. Oakland Park Blvd., Ft. Lauderdale 33306

3rd Wednesday, 2 p.m.

Northwest Regional Library, 3151 University Dr., Rm 214, Coral Springs 33065

3rd Wednesday, 6 p.m.

Covenant Living of Florida, 9215 W. Broward Blvd., Fort Lauderdale 33306



MIAMI-DADE COUNTY



Joe H. Baldelomar, Psy.M.

Bilingual Community Engagement Manager

786.761.5524 | jhbaldelomar@alz.org | [LinkedIn](#)

For virtual programs see table of contents.

PRIVATE AND PERSONALIZED PROGRAMS

We tailor programs for specific groups such as civic organizations, chambers of commerce, companies, and more. Please reach out to arrange a private, personalized, no-cost program for your group or to invite us to your local event or health fair.

- Miami-Dade County Aviation Department's (MDAD)
- Doubletree Miami Airport
- City of Aventura Police Department

COMMUNITY EDUCATION & OUTREACH

Healthy Living for your Brain and Body

Tuesday, January 21, 11 a.m.

North Dade Regional Library, 2455 NW 183rd St., Miami Gardens 33056

Health Fair

Thursday, January 29, 10 a.m.

Key Biscayne Community Center; 10 Village Green Way, Key Biscayne 33149

Health Fair

Saturday, January 31, 10 a.m.

Mother of Our Redeemer Catholic Parish, 8445 NW 186th St., Miami 33015

Caregiver Stress

Wednesday, February 18, 11 a.m.

North Dade Regional Library, 2455 NW 183rd St., Miami Gardens 33056

Brain Bus Stop at Miami Springs Woman's Clubhouse and Park Street

Saturday, February 21, 10 a.m.

Miami Springs Woman's Clubhouse, 200 Westward Dr., Miami Springs 33166



Brain Bus Stop at Miami Dade College Medical Campus

Saturday, March 7, 9 a.m.

Miami Dade College Medical Campus, 950 NW 20th St., Miami, 33127

Brain Bus Stop at Barry University

Tuesday, March 10, 10 a.m.

Barry University, 11300 NE 2nd Ave., Miami Shores 33161

Understanding Alzheimer's and Dementia

Wednesday, March 18, 11 a.m.

North Dade Regional Library, 2455 NW 183rd St., Miami Gardens 33056

Brain Bus Stop at Opa-Locka Church of Our Lord

Saturday, March 21, 11 a.m.

Opa-Locka Church of Our Lord, 2010 Ali Baba Ave., Opa-Locka, 33054

Health Fair

Wednesday, March 25, 10 a.m.

Barry University, 11300 NE 2nd Ave., Miami Shores 33161

Understanding Alzheimer's and Dementia

Wednesday, April 15, 11 a.m.

North Dade Regional Library, 2455 NW 183rd St., Miami Gardens 33056

CAREGIVER SUPPORT GROUPS

Miami-Dade County

2nd Monday, 6 p.m., In-Spanish

Coral Gables Branch Library, 3443 Segovia Street, Coral Gables 33134

2nd Thursday, 12:30 p.m.

Northeast Dade, Aventura Library, 2930 Aventura Blvd., Aventura 33180

2nd Friday, 12:30 p.m.

Pinecrest Community Center, 5855 Killian Dr., Pinecrest 33156

4th Tuesday 7 p.m.

The Palace Suites, 11377 SW 84th St., Miami 33173

4th Thursday, 12:30 p.m.

Coral Gables Adult Activity Center, 2 Andalusia Ave., Coral Gables 33134

4th Friday, 1 p.m.

Northeast Dade - Aventura Branch Library, 2930 Aventura Blvd., Aventura



VOLUNTEER

with the

Alzheimer's Association

VOLUNTEER OPPORTUNITIES:

- Community connector
- Community educator
- Support group facilitator
- Event committee member
- Advocate
- Brand ambassador
- Data entry volunteer

For more information email alzflnews@alz.org or reach out to your local community engagement manager.



COMMUNITY ENGAGEMENT



Keith Gibson

Sr. Director, Community Engagement

561.414.2365 | kgibson@alz.org | [LinkedIn](#)

Although African Americans are more likely than Whites to have Alzheimer's or another dementia, studies show that they are less likely to have a diagnosis. And delays in diagnosis mean that African Americans, Hispanics and others are not getting treatments when they are most likely to be effective at improving quality of life.



THE INTERSECTION OF IDD AND ALZHEIMER'S



Katie Fahrenbruch

Director, Community Engagement

850.696.0814 | kafahrenbruch@alz.org | [LinkedIn](#)



DID YOU KNOW

Individuals with **Down syndrome** have a higher than **90%** lifetime risk of developing **Alzheimer's disease**.

Resources

- [Down Syndrome and Alzheimer's](#)
- [NDSS Aging and Down Syndrome Guidebook](#)
- [NDSS Alzheimer's and Down Syndrome: A Practical Guidebook for Caregivers](#)
- [NTG Early Detection Screen for Dementia](#)

SAVE THE DATE

Brain Health & Aging Summit:
Supporting the IDD Community
March 25, 2026
Miami, FL and Online



FOR PROFESSIONALS

CARE PROVIDERS

The Alzheimer's and Dementia Care ECHO® Program for Professional Care Providers

The Alzheimer's and Dementia Care ECHO Program connects multidisciplinary dementia care experts with professional care providers in a free continuing education series of interactive, case-based video conferencing sessions.

Project ECHO aims to improve health outcomes through a team-based approach while reducing geographic barriers and the cost of care. This dementia care training series from the Alzheimer's Association is one of the first in the country focused on improving access to quality dementia care in the long-term setting. [Learn more.](#)

See the impact of Project ECHO

The 2025 Annual Report shows our efforts to empower professionals to deliver high-quality dementia care in their communities.

[Download the PDF](#)

ALZHEIMER'S AND PUBLIC HEALTH ACTION IN FLORIDA



Alzheimer's disease is a growing public health crisis in Florida, and the impact of Alzheimer's is projected to rise. A comprehensive public health approach is essential to improve community health, support the well-being of those living with cognitive decline and their families, and reduce the risk of dementia throughout communities. The most recent data show:

- 580,000 people aged 65 and older are living with Alzheimer's in Florida.
- 18.6% of people aged 45 and older have subjective cognitive decline in Florida.
- 870,000 family caregivers provide essential support to people living with dementia in Florida.
- 1.3 billion hours of unpaid care are provided by dementia caregivers in Florida.
- \$28.4 billion is the value of unpaid care provided in Florida.
- \$3.7 billion is the cost of Alzheimer's to the state Medicaid program.

[Learn more.](#)



Empowering Professionals in the Fight Against Dementia

What is ALZPro?

ALZPro is the Alzheimer's Association's hub for professional resources. It unites care resources, research, data platforms, clinical guidelines, continuing education and implementation tools — all on one trusted platform. ALZPro empowers professionals to reduce risk, advance early detection, improve care and expand equitable access.

The ALZPro Advantage

ALZPro equips you with essential tools to deliver equitable, evidence-informed, person-centered care.

ALZPro provides:

- **Instant access to streamlined tools, resources, research**
and training
- **Timely, relevant scientific findings and clinical insights,**
tailored for busy professionals
Practical resources that directly support your work and the people you serve
The opportunity to connect and collaborate with peers and leading experts
- **Opportunities for continuing education credits, online**
training and certifications

Join the professionals shaping the future of dementia care at alz.org/ALZPro.

FOR RESEARCHERS

RESEARCH

Scientific Conferences

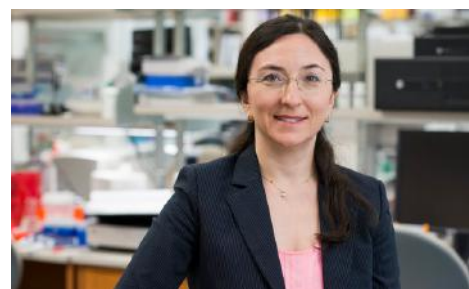
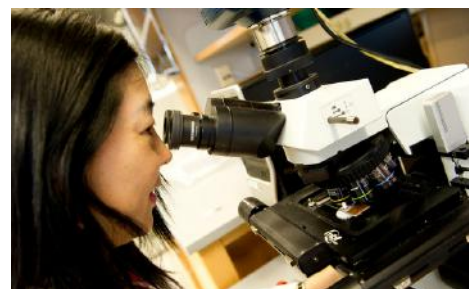
The Alzheimer's Association offers year-round opportunities for the scientific community to network and learn about Alzheimer's and dementia research. Events include the Alzheimer's Association International Conference® (AAIC®) — the world's largest meeting dedicated to advancing dementia science — and a variety of in-person and virtual conferences, symposia and other events. [Learn more.](#)

Welcome to the ISTAART Community

The Alzheimer's Association International Society to Advance Alzheimer's Research and Treatment (ISTAART) is a diverse global network of scientists, clinicians and dementia professionals. Members of this professional organization share common goals: the pursuit of knowledge, collaboration and breakthroughs to advance the research and treatment of Alzheimer's disease and other dementia. When you join ISTAART, you'll have the opportunity to connect with colleagues worldwide, explore avenues for networking and mentorship, and stay on the leading edge of scientific advancements. [Learn more.](#)

Grant Programs

The Alzheimer's Association International Research Grant Program (IRGP) funds investigations to advance our understanding of Alzheimer's disease, identify new treatment strategies, improve care for people with dementia and further our knowledge of brain health and disease prevention. [Learn more.](#)



DO WHAT YOU LOVE. HELP END ALZHEIMER'S.

Hiking, golfing, gaming, crafting, play pickleball or bridge, host a cookout or purple party — no matter what your passion is, you can make it a fundraiser to end Alzheimer's and all other dementia.

So select an activity, pick a date and fundraise for a future without Alzheimer's.

Visit alz.org/dowhatyoulove to get started.

**DO WHAT
YOU LOVE
TO END ALZ**[™]
ALZHEIMER'S  ASSOCIATION[®]



Florida Galas



For sponsorship opportunities and more in the Tampa Bay Area,
email Christine Feller at clfeller@alz.org



For sponsorship opportunities and more in Greater Orlando,
email Denise Ward at dlward@alz.org



For sponsorship opportunities and more in South Florida,
email Liesl Mejias at limejias@alz.org

**WALK
TO END
ALZHEIMER'S**
ALZHEIMER'S ASSOCIATION

THANK YOU

FOR AN INCREDIBLE 2025 SEASON



RALLY in TALLY

JAN.
26-27
2026

REGISTRATION
OPEN

For more information,
email jbraisted@alz.org

 **ALZHEIMER'S[®]
ASSOCIATION**

The Florida Capitol



Stay Up to Date

Weekly E-News

Every Wednesday, you'll receive the latest information on Alzheimer's care and support, advances in research, upcoming events in your chapter, as well as inspirational stories and resources for people living with the disease and their caregivers. Sign up at alz.org/enews.



Follow & Tag Us on Social!

Chapter Accounts

Central & North Florida Chapter | @AlzCnfl
[Facebook](#) | [Instagram](#) | [X](#)

Florida Gulf Coast Chapter | @AlzFIGulf
[Facebook](#) | [Instagram](#) | [X](#)

Southeast Florida Chapter | @AlzSefl
[Facebook](#) | [Instagram](#) | [X](#)

Statewide Accounts

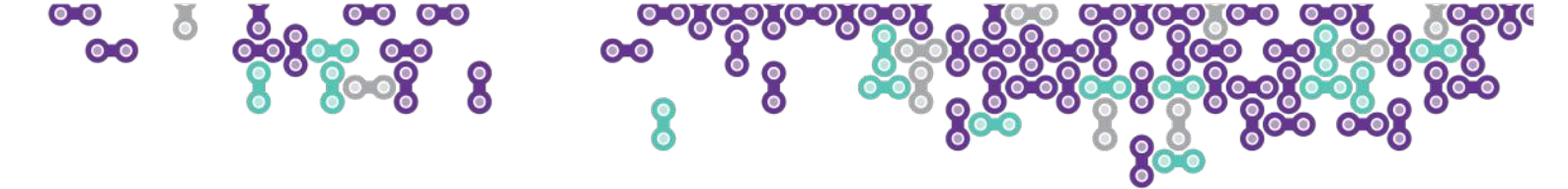
LinkedIn	Alzheimer's Association, Florida
TikTok	@AlzFlorida
YouTube	@AlzFlorida



Alz MindFL - Florida's Alzheimer's & Dementia Blog

Another great way to stay up to date is by subscribing to our blog, Alz MindFL. The blog features stories from across Florida including care tips, research updates, volunteer spotlights, inspirational stories, upcoming events and more. Check it out and subscribe at alzmindfl.org.





Advancing Alzheimer's and dementia research starts with you. Help shape the next breakthrough with TrialMatch®.



It takes **everyone** to advance Alzheimer's research.

By joining research studies, you can help us develop the next generation of dementia treatments, diagnostic tools, care and prevention strategies.

Get involved through the Alzheimer's Association TrialMatch® — a tool for people with cognitive impairment, dementia, caregivers and healthy participants to quickly and easily learn more about research opportunities taking place throughout the United States and across the world. Confidentially search hundreds of drug and non-drug studies, sign up, receive email notifications about new opportunities or connect with research teams.

Participate in three easy steps:

1. Begin your journey by signing up on our dedicated TrialMatch platform.
2. Answer 10 simple questions about yourself or the person you're helping to sign up to help personalize your study matches.
3. Review your study matches to explore studies that may be a good fit.

Get started today.



alz.org/TrialMatch | 800.272.3900

trialmatch®
ALZHEIMER'S ASSOCIATION®



Click for local support,
information,
resources, upcoming
events and more.



VISIT ALZ.ORG

Caring for someone with Alzheimer's isn't easy.

Reaching us is.

24/7 Helpline: 800.272.3900



Get empowered in your Alzheimer's journey

Take action with the
My ALZ Journey app



A diagnosis can feel overwhelming, but My ALZ Journey can help you navigate your diagnosis of Alzheimer's or another dementia and move forward.

Download the app today in the Apple App Store or Google Play Store to learn what to expect and how to plan ahead.

alz.org/MyALZJourney

If you have any inquiries, feel free to reach out to us anytime at 800.272.3900.

We want to recognize the essential contributions of our volunteers and everyone who supports our vision: a world without Alzheimer's and all other dementia®.

*Thank
you!*

ALZHEIMER'S  ASSOCIATION®