



COMMUNITY PROGRAMS & EVENTS

Alzheimer's Association®
Florida Chapters
800.272.3900 | alz.org®



CONTENTS



The Alzheimer's Association® is proud to coordinate services in Florida through three chapters: Central and North Florida, Florida Gulf Coast, and Southeast Florida. We serve Floridians by providing education, awareness, outreach and support.

Please use this guide to explore local programming and events. For additional resources visit Community Resource Finder at alz.org/crf.

Welcome	03
Meet Our Team	04
Information & Support	05
Virtual Programs	06
On-Demand Programs	09
Brain Health and Awareness	10
Panhandle & Greater Tallahassee	11
Greater Gainesville, Jacksonville & Ocala.....	15
Greater Orlando, Flagler & Volusia	20
Greater Polk & The Villages	23
Citrus & Hernando	27
Greater Tampa Bay	29
Greater Sarasota & Sun City Center	34
Southwest Florida	37
Greater Treasure Coast, Brevard & Osceola...40	
Palm Beach County	43
Broward County	46
Miami-Dade County	48
Community Engagement	52
The Intersection of IDD and Alzheimer'	53
For Professionals	54
Care Providers	
Public Health	
For Researchers	56
Your Impact	57
Other Ways to Get Involved	58

WELCOME

The Alzheimer's Association, Florida Chapters, serves all 67 counties in our beautiful state. We offer education, outreach, and support to everyone facing Alzheimer's and other dementias within our community, including individuals living with the disease, caregivers, professionals, families, and community members. Our commitment extends to advocating for the needs and rights of those confronted with Alzheimer's disease and promoting essential research towards treatment, prevention, and ultimately, a cure.

We provide programs through various formats: virtually, by telephone, on-demand, and in person. Most of our programs are offered at no charge, with some exceptions for professional programs. Additionally, we tailor programs for specific groups such as civic organizations, chambers of commerce, companies, and more. Please reach out to your local Community Engagement Manager to arrange a private and personalized program for your group or to invite us to your local event or health fair.

Volunteer with the Alzheimer's Association

Volunteers play a crucial role in positively impacting the lives of those facing Alzheimer's and dementia. By volunteering with the Alzheimer's Association, you become part of a dedicated network working to combat this devastating disease, honor loved ones, and provide care and support to those in need. Learn more at volunteer.alz.org.

Explore Various Opportunities:

- Community Educator
- Support Group Facilitator
- Community Connector
- Alzheimer's Advocate
- Brand Ambassador
- Event Committees
- And more!

LEARN MORE



Meet Our Team

Care and Support

Alexis Jacobs, JD, FCCM
Panhandle & Greater Tallahassee

Donna Lee
Greater Gainesville, Jacksonville, & Ocala

Lyndsey Taylor
Greater Orlando, Volusia & Flagler

Stefanie Wardlow, M.A.
Citrus & Hernando

Makeba Huntington-Symons, M.A.
Greater Tampa Bay

Jody Streussnig, BAA
Greater Polk & The Villages

Silvia Caldwell, LPN
Greater Sarasota & Sun City Center

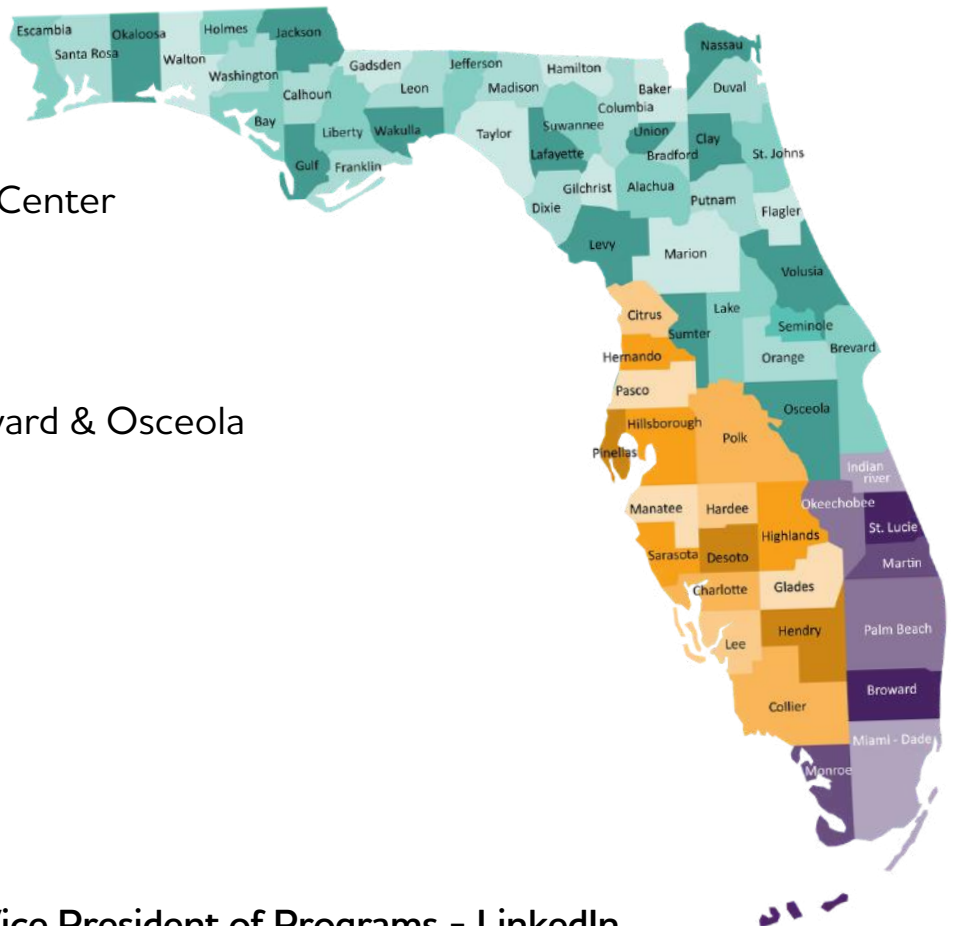
Lisa L. Kiddon
Southwest Florida

Evelyn Espinal, MSW
Greater Treasure Coast, Brevard & Osceola

Olivia Matute, B.S.
Palm Beach

Samrah Mitha, MPH
Broward

Joe H. Baldelomar, Psy.M.
Miami-Dade



Regional

Julie Shatzer, MSW, LCSW, Vice President of Programs - [LinkedIn](#)

Kasia Sherwin, MNM, Director of Grants and Data

Keith Gibson, Senior Director, Community Engagement

Stefanie Wardlow, M.A., Senior Manager, Community Engagement and Brain Bus

INFORMATION & SUPPORT



Welcome to ALZConnected®

ALZConnected is a dedicated community where people with Alzheimer's, their caregivers, and others affected by the disease can share answers, opinions, ideas, and support. Learn more at alzconnected.org



Care Consultations

Living with mild cognitive impairment, Alzheimer's disease, or other dementia profoundly impacts multiple generations. Each person has a unique role, spouses, siblings, children of all ages, and friends—all contributing to the care team. This journey demands careful consideration, strategic planning, and above all, a well-thought-out plan.

Care Consultations from the Alzheimer's Association can help you to:

- Navigate difficult caregiving decisions and family issues.
- Assess current needs and anticipate future care challenges.
- Develop an effective care plan and problem-solve barriers.
- Receive supportive listening in a confidential, nonjudgmental environment.

Our professional staff has the knowledge to guide you through a variety of topics. People reach out for many different reasons. Not sure what to ask or where to start? That's okay, too. Just give us a call and we'll guide you from there. The service is free and is at no cost to you.

Consultations are available several ways:

- **Phone:** Call 800.272.3900 for 24/7 support; use 711 for TRS operator.
- **Live Chat:** Access via the green button on our website, available 8 a.m. to 8 p.m. ET, Monday to Friday. alz.org/help-support.
- **Online Form:** Fill out a [form](#) for assistance, with a response within 24 hours.

Build an Action Plan with ALZNavigator™

Whether you're a caregiver, a person living with dementia, or someone concerned about memory loss, find the support you need with ALZNavigator. Just answer a few questions about your situation and ALZNavigator will guide you to the resources and tools you need today and throughout each step of the disease — all in one place. alz.org/alznavigator



VIRTUAL PROGRAMS

Apr.
2

ALZ TALKS: Opening the Door to New Alzheimer's Treatments
3 p.m. ET

[> LEARN MORE](#)

Apr.
14

BUILDING BRAIN-HEALTHY HABITS
12 p.m. ET

[> LEARN MORE](#)

May
12

IMPACT OF ALZHEIMER'S-PUBLIC SERVICE
12 p.m. ET

[> LEARN MORE](#)

Jun.
9

**THE EMPOWERED CAREGIVER:
Building Foundations of Caregiving**
12 p.m. ET

[> LEARN MORE](#)

VIRTUAL PROGRAMS

VIRTUAL SUPPORT GROUPS

When you're facing difficult times, having a good support network you can turn to for advice and encouragement may help you feel connected and give you a sense of belonging and purpose. Connecting with others like you virtually may help put your own experiences living with the disease in perspective, and provide you with the support and encouragement necessary to move beyond your diagnosis.

Caregiver Support Groups

- 2nd & 4th Tuesday, 10 a.m. ET
- 2nd Tuesday, 7 p.m. ET
- 2nd Wed., 12:30 p.m./11:30 a.m. ET
- 3rd Tuesday, 1:30 p.m. ET
- 3rd Tuesday, 3 p.m. ET
- 3rd Tuesday, 6 p.m. ET
- 3rd Thursday, 12:30 p.m. ET
- 4th Thursday, 1 p.m. ET
- 4th Saturday, 3:30 p.m. ET

Caregiver Support Group in Spanish

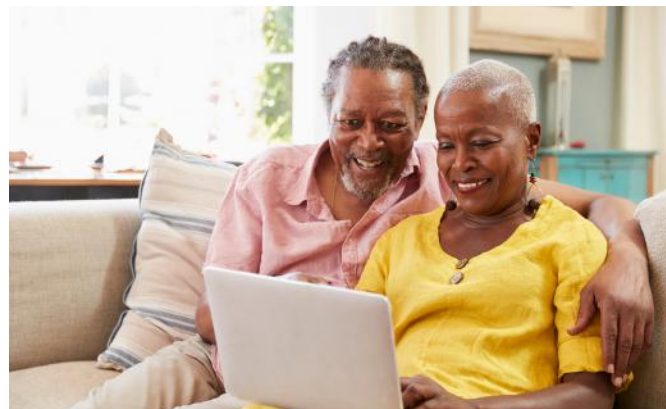
- 1st Thursday, 12:30 p.m. ET

Early Stage Support Group

- 1st Friday, 10 a.m. ET
- 3rd Tuesday, 1:30 p.m. ET



Call the 24/7 Helpline at 800.272.3900 for instructions on how to log into the virtual meeting.



VIRTUAL PROGRAMS

VIRTUAL AME CHURCH CAREGIVER SUPPORT GROUPS

In partnership with the AME Church, the Alzheimer's Association offers virtual caregiver support groups for those caring for someone living with Alzheimer's or another dementia. These monthly sessions provide a safe space for caregivers to share experiences, receive support, and connect with others facing similar challenges.

- 4th Thursday, 7 p.m. ET
- 4th Sunday, 5 p.m. ET

Call the 24/7 Helpline at 800.272.3900 for instructions on how to log into the virtual meeting.



ON-DEMAND PROGRAMS

EXPLORE RECORDED PROGRAMS

Transitions in Care

Moving a loved one with dementia into a long-term care community can be emotionally challenging. This program offers tips and support to help caregivers assess needs, explore options, understand coverage and stay involved after the move. [Click to learn more.](#)

Access on-demand webinars at [Alzprogramsanytime.org](https://www.alzprogramsanytime.org)

We have topics under the following categories:



Empowered Caregiver

Learn how to navigate the responsibilities of caring for someone living with dementia.



Brain Health & Warning Signs

Identify the warning signs of Alzheimer's, learn how to reduce your risk and more.



Population-Specific Resources

Understand how to work with specific communities including those with intellectual and developmental disabilities, deafness or hard of hearing and more.



Latest Research

Discover the latest advancements in Alzheimer's and dementia research.



Impact of Alzheimer's & Dementia in the Community

Access education for general audiences, a faith-based audience, corporate/business/provider audiences and public service audience (law enforcement, first responders, EMT and firefighters).



En Español (Spanish Language Videos)

información sobre el Alzheimer y otras demencias.



BRAIN HEALTH AND AWARENESS

BRAIN BUS

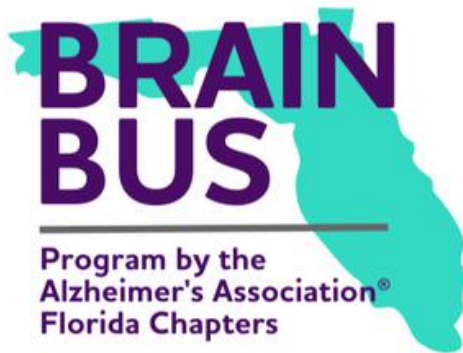


The Brain Bus raises awareness of Alzheimer's and related dementias and addresses the benefits of early detection, early diagnosis, brain health and risk reduction. With two mobile units and virtual offerings the Brain Bus program reaches all counties throughout Florida. See each county for a full schedule of stops.



Rob Harris
Community Engagement
Manager

Aramiz Gonzalez
Bilingual Community
Engagement Manager



The Brain Bus is sponsored in part by State of Florida Department of Elder Affairs and the Area Agency on Aging For Southwest Florida.

Take charge of your brain health

Make a plan with our free Brain Health Habit Builder.

Brain Health Habit Builder
ALZHEIMER'S ASSOCIATION

Brain Health Habit Builder is not intended to take the place of professional medical advice.



PANHANDLE & GREATER TALLAHASSEE

Bay, Calhoun, Escambia, Franklin, Gadsden, Gulf, Hamilton, Holmes, Jackson, Jefferson, Lafayette, Leon, Liberty, Madison, Okaloosa, Santa Rosa, Suwannee, Taylor, Wakulla, Walton & Washington Counties

ary



Alexis Jacobs, JD, FCCM

Community Engagement Manager

407.543.9427 | amjacobs@alz.org | [LinkedIn](#)

For virtual programs see table of contents.

PRIVATE AND PERSONALIZED PROGRAMS

We tailor programs for specific groups such as civic organizations, chambers of commerce, companies, and more. Please reach out to arrange a private, personalized, no-cost program for your group or to invite us to your local event or health fair.

COMMUNITY EDUCATION & OUTREACH

Hamilton County

Brain Bus Stop at Stephen Foster Folk Culture Center State Park

Saturday, May 23, 9:30 a.m.

Stephen Foster Folk Center, 11016 Lillian Saunders Dr., White Springs 32096

Brain Bus Stop at Stephen Foster Folk Culture Center State Park

Sunday, May 24, 9:30 a.m.

Stephen Foster Folk Center, 11016 Lillian Saunders Dr., White Springs 32096

Jefferson County

Brain Bus Stop at Monticello-Jefferson County Chamber of Commerce

Friday, June 19, 3 p.m.

Chamber of Commerce, 420 Washington St., Monticello 32344

Brain Bus Stop at Monticello-Jefferson County Chamber of Commerce

Saturday, June 20, 3 p.m.

Chamber of Commerce, 420 Washington St., Monticello 32344

Leon County

Brain Bus Stop at LeMoyne's Chain of Parks Art Festival

Saturday, April 18, 10 a.m.

LeMoyne's Chain of Parks Art Festival 125 N Gadsden St, Tallahassee 32301

PANHANDLE & GREATER TALLAHASSEE

Bay, Calhoun, Escambia, Franklin, Gadsden, Gulf, Hamilton, Holmes, Jackson, Jefferson, Lafayette, Leon, Liberty, Madison, Okaloosa, Santa Rosa, Suwannee, Taylor, Wakulla, Walton & Washington Counties

Brain Bus Stop at LeMoyne's Chain of Parks Art Festival

Saturday, April 18, 10 a.m.

LeMoyne's Chain of Parks Art Festival 125 N Gadsden St, Tallahassee 32301

Health Fair

Saturday, April 18, 9 a.m.

Big Bend Hospice, 1723 Mahan Center Blvd., Tallahassee 32308

Brain Bus Stop at LeMoyne's Chain of Parks Art Festival

Sunday, April 19, 10 a.m.

LeMoyne's Chain of Parks Art Festival 125 N Gadsden St, Tallahassee 32301

Awareness Presentation

Wednesday, July 15, 8:30 a.m.

Tallahassee Senior Center, 1400 N Monroe St, Tallahassee 32303

Madison County

10 Warning Signs of Alzheimer's

Wednesday, April 1, 9:30 a.m.

Madison County Senior Center 1161 SW Harvey Greene Dr., Madison 32340

Suwannee County

Brain Bus Stop at Live Oak Public Library

Friday, May 15, 10 a.m.

Live Oak Public Library, 1848 South Ohio Avenue, Live Oak 32064

Walton County

Brain Bus Stop at Life Enrichment Center Defuniak Springs

Wednesday, April 8, 11 a.m.

Life Enrichment Center, 312 College Ave., Defuniak Springs 32435

CAREGIVER SUPPORT GROUPS

Leon County

3rd Monday at 2 p.m.

The Grove at Canopy, 2601 Crestline Rd, Tallahassee, 32308



Okaloosa County

1st Wednesday at 2 p.m. CST

Niceville Senior Center, 201 Campbell Drive, Niceville, 32578

2nd Wednesday at 2 p.m. CST

Crestview Senior Activity Center, 205 Stillwell Blvd., Crestview 32539

Santa Rosa County

3rd Wednesday at 6 p.m.

Navarre Gardens, 2640 Hwy 87 S. Navarre 32566



GREATER GAINESVILLE, JACKSONVILLE & OCALA

Alachua, Baker, Bradford, Clay, Columbia, Dixie, Duval, Gilchrist, Levy, Marion, Nassau, Putnam, St. Johns, & Union Counties



Donna Lee

Community Engagement Manager

850.583.8758 | dmlee@alz.org | [LinkedIn](#)

For virtual programs see table of contents.

PRIVATE AND PERSONALIZED PROGRAMS

We tailor programs for specific groups such as civic organizations, chambers of commerce, companies, and more. Please reach out to arrange a private, personalized, no-cost program for your group or to invite us to your local event or health fair. Thank you to the following organization(s).

- Embassy Suites

COMMUNITY EDUCATION & OUTREACH

Bradford County

Health Fair

Thursday, April 30, 10 a.m.

First Presbyterian Church, 123 S. Second Street Palatka 32177

Dixie County

Brain Bus Stop at Suwannee River Fair Grounds

Saturday, May 2, 9 a.m.

Suwannee River Fair Grounds, 17851 90 Ave., Fanning Springs 32693

Brain Bus Stop at Suwannee River Fair Grounds

Saturday, May 16, 9 a.m.

Suwannee River Fair Grounds, 17851 90 Ave., Fanning Springs 32693

Duval County

Brain Bus Stop at UNF Osprey Fountains Multi-Purpose Room #2,

Thursday, April 2, 10 a.m.

UNF Osprey Fountains, 4654 Osprey Ridge Rd, Jacksonville 32224



GREATER GAINESVILLE, JACKSONVILLE & OCALA

Alachua, Baker, Bradford, Clay, Columbia, Dixie, Duval, Gilchrist, Levy, Marion, Nassau, Putnam, St. Johns, & Union Counties

Brain Bus Stop at Spirit of the Living God Ministries

Saturday, April 4, 10 a.m.

Spirit of the Living God Ministries, 5043 Timothy Lane, Jacksonville 32210

Brain Bus Stop at Jax Community Fair

Saturday, May 23, 2026

Adam W. Herbert University Center, 12000 Alumni Dr, Jacksonville 32224

Marion County

10 Warning Signs of Alzheimer's

Friday, May 1, 11 a.m.

Stone Creek Reunion Center Ballroom, 6111 SW 89 th Court Rd., Ocala 34481

Nassau County

Brain Bus Stop at YMCA At Wildlight

Saturday, June 6, 10 a.m.

YMCA At Wildlight, 251 Breezeway St., Yulee 32097

Brain Bus Stop at Courtyard at Amelia Island

Friday, June 12, 8 a.m.

Courtyard at Amelia Island, 2700-1 Atlantic Ave., Fernandina Beach 32034

Brain Bus Stop at Courtyard at Amelia Island

Saturday, June 13, 8 a.m.

Courtyard at Amelia Island, 2700-1 Atlantic Ave., Fernandina Beach 32034

Putnam County

Brain Bus Stop at First Presbyterian Church

Thursday, April 30, 9 a.m.

First Presbyterian Church, 123 S. Second Street Palatka 32177

Health Fair

Saturday, April 11, 10 a.m.

Putnam County Fair Grounds, 118 Fairgrounds Rd, East Palatka 32131



CAREGIVER SUPPORT GROUPS

Alachua County

2nd Friday, Noon

Senior Healthcare Center at Crown Pointe, 2205 NW 40th Terr., Gainesville

Duval County

2nd Wednesday, 3:30 p.m.

River Garden Hebrew Home, 11401 Old, St. Augustine Rd., Jacksonville 32258

2nd Wednesday, 6 p.m.

Palms Presbyterian Church, 3410 3rd St. South, Jacksonville Beach 32250

2nd Thursday, 1:30 p.m.

LPL Financial, LLC, 6 S Main St., Chiefland 32626

Marion County

3rd Monday 11 a.m..

Mary Sue Rich Community Center, 1821 NW 21st Ave., Ocala 34475

3rd Friday, 2:30 p.m.

Ocala VA Clinic, 4826 SW 49th Rd., Ocala 34474

*for Veteran caregivers or caregivers of Veterans

St. Johns County

2nd & 4th Thursdays, 10 a.m.

Homeport Christian Church, 5605 US 1 South, St. Augustine 32086

GREATER GAINESVILLE, JACKSONVILLE & OCALA

Alachua, Baker, Bradford, Clay, Columbia, Dixie, Duval, Gilchrist, Levy, Marion, Nassau, Putnam, St. Johns, & Union Counties



JOIN the Alzheimer's Association

VOLUNTEER OPPORTUNITIES:

- Community connector
- Community educator
- Support group facilitator
- Event committee member
- Advocate
- Brand ambassador
- Data entry volunteer



*Reach out to your local community engagement manager to join our team!

GREATER ORLANDO, FLAGLER & VOLUSIA

Flagler, Orange, Seminole & Volusia Counties



Lyndsey Taylor

Senior Manager Community Engagement
407.543.9429 | lctaylor@alz.org | [LinkedIn](#)
For virtual programs see table of contents.

PRIVATE AND PERSONALIZED PROGRAMS

We tailor programs for specific groups such as civic organizations, chambers of commerce, companies, and more. Please reach out to arrange a private, personalized, no-cost program for your group or to invite us to your local event or health fair. Thank you to the following organization(s).

- The Florida Hotel
- Stetson University

COMMUNITY EDUCATION & OUTREACH

Flagler County

Brain Bus Stop at Flagler County Fair Grounds

Sunday, April 26, 11 a.m.

Flagler County Fair Grounds, 150 Sawgrass Rd. Bunnell 32110

Brain Bus Stop at Saint Elizabeth Ann Seton Catholic Church

Saturday, May 30, 9 a.m.

St. Elizabeth Ann Seton Church, 4600 Belle Terre Pkwy., Palm Coast 32164

Brain Bus Stop at Flagler Farmers Market

Saturday, June 27, 9 a.m.

Flagler Farmers Market, South 2nd Street &, S Central Ave., Flagler Beach 32136

Orange County

Brain Bus Stop at OCPS Academic Center for Excellence

Saturday, April 11, 10 a.m.

OCPS Academic Center for Excellence, 701 West Livingston St., Orlando 32805



Seminole County

Brain Bus Stop at Lake Concord Park

Friday, April 10, 6 p.m.

Lake Concord Park, 95 Triplet Lake Dr., Casselberry 32707

Volusia County

Brain Bus Stop at Volusia Memorial Funeral Home Port Orange

Friday, April 24, 10 a.m.

Memorial Funeral Home, 4815 Clyde Morris Blvd, Port Orange 32129

CAREGIVER SUPPORT GROUPS

Flagler County

2nd Monday, 11 a.m.

Market Street Assisted Living, 2 Corporate Drive, Palm Coast 32137

2nd and 4th Monday, 3:30 p.m.

St. Elizabeth Ann Seton Catholic Church, 4600 Belle Terre Pkwy., Palm Coast

Orange County

1st Monday, 7 p.m.

Forest Lake Seventh Day Adventist Church, 515 Harley Lester Ln. 32703

1st Wednesday, 6 p.m.,

Neurology One, 92 N. Dean Rd., Suite 100, Orlando 32825

*Bilingual/Spanish Caregiver Support Group

2nd Monday, 4 p.m.

One Senior Place- Greater Orlando, 715 Douglas Ave., Altamonte Springs 32714

1st Thursday, 6 p.m.

Spring Hills Lake Mary, 3655 W Lake Mary Blvd., Lake Mary 32746

3rd Thursday, 3 p.m.

The Mayflower, 1850 Mayflower Ct., Winter Park 32792



Volusia County

1st Tuesday, 12 p.m.

Brookdale Deland, 1210 N. Stone St., Deland 32720

1st Friday, 10:30 a.m.

Port Orange Presbyterian Church, 4662 S. Clyde Morris Blvd., Port Orange

3rd Tuesday at 10:30 a.m.

Aberdeen, 50 Allwood Green Blvd., Ormond Beach 32174

3rd Wednesday, 6 p.m.

The Blake @ LPGA, 1635 N Williamson Blvd., Daytona Beach 32117

3rd Thursday, 10:30 a.m.

Arya at Debary, 838 Signature Dr., Debary 32713



GREATER POLK & THE VILLAGES

Hardee, Highlands, Lake, Polk & Sumter Counties



Jody Mathewson, BAA
Senior Manager, Community Engagement
239.294.1729 | jmathewson@alz.org | [LinkedIn](#)
For virtual programs see table of contents.

PRIVATE AND PERSONALIZED PROGRAMS

We tailor programs for specific groups such as civic organizations, chambers of commerce, companies, and more. Please reach out to arrange a private, personalized, no-cost program for your group or to invite us to your local event or health fair. Thank you to the following organization(s).

- Harbor Hills County Club

COMMUNITY EDUCATION & OUTREACH

Lake County

Brain Bus Stop at Lake Minoa

Thursday, April 16, 10 a.m.

Lake Minoa, 1480 Buena Vista Blvd, The Villages 32162

Polk County

Brain Bus Stop at Polk County Sheriff's Office

Friday, May 8, 7 a.m.

PCSO Sheriff Operation Center, 1891 Jim Keene Blvd., Winter Haven 33880

Brain Bus Stop at First Presbyterian Church

Tuesday, May 12, 8 a.m.

First Presbyterian Church, 175 Lake Hollingsworth Dr., Lakeland 33801

Brain Bus Stop at RP Funding

Saturday, May 30, 10 a.m.

RP Funding, 701 W. Lime St., Lakeland 33815

Brain Bus Stop at Munn Park

Saturday, June 20, 9 a.m.

Munn Park, 201 E Main St. Lakeland 33801



GREATER POLK & THE VILLAGES

Hardee, Highlands, Lake, Polk & Sumter Counties

MCI/EARLY STAGE/YOUNG ONSET SUPPORT GROUPS

Registration required, please call 800.272.3900.

Sumter County

1st Friday, 10 a.m.

Charter Research, The Villages 32162. *First Steps, in-person or virtual

CAREGIVER SUPPORT GROUPS

Lake County

3rd Wednesday, 1:30 p.m.

Waterman Village, 445 Waterman Ave., Mt. Dora 32757

Polk County

1st Thursday, 11 a.m.

Methodist Temple, 2700 South Florida Ave., Lakeland 33803

2nd Tuesday, 12 p.m.

Hawthorne Inn, 6150 Lakeland Highlands Rd., Lakeland 33813

*lunch provided

3rd Monday, 11 a.m.

Schalamar Creek Clubhouse Garden Room, 4500 US-92, Lakeland 33801

3rd Tuesday, 1:30 p.m.

3601 Cypress Gardens Rd., Winter Haven 33884

4th Thursday, 9:30 a.m.

Solivita Baltic Room, 395 Village Dr., Kissimmee 34759

Sumter County

2nd Thursday, 2 p.m.

Wildwood Community Center, 6500 Powell Rd., Wildwood, 34785







CITRUS & HERNANDO COUNTIES



Stefanie Wardlow, M.A.
Senior Manager, Community Engagement
727.270.9862 | swardlow@alz.org | [LinkedIn](#)
For virtual programs see table of contents.

PRIVATE AND PERSONALIZED PROGRAMS

We tailor programs for specific groups such as civic organizations, chambers of commerce, companies, and more. Please reach out to arrange a private, personalized, no-cost program for your group or to invite us to your local event or health fair.

COMMUNITY EDUCATION & OUTREACH

Citrus County

Brain Bus Stop at The Chet Cole Enrichment Center

Thursday, April 9, 10 a.m.

The Chet Cole Enrichment Center, 5325 W. Safari Lane, Lecanto 34461

Hernando County

Brain Bus Stop at Blueberry Festival in Florida Classic Park

Friday, May 8, 5 p.m.

Florida Classic Park, 5360 Lockhart Road, Brooksville 34602

Brain Bus Stop at Blueberry Festival in Florida Classic Park

Saturday, May 9, 9 a.m.

Florida Classic Park, 5360 Lockhart Road, Brooksville 34602

Brain Bus Stop at Blueberry Festival in Florida Classic Park

Sunday, May 10, 9 a.m.

Florida Classic Park, 5360 Lockhart Road, Brooksville 34602

CITRUS & HERNANDO COUNTIES



**Be a
COMMUNITY CONNECTOR!**

Ask me how.

*Reach out to your local community engagement manager to join our team!

GREATER TAMPA BAY

Hillsborough, Pinellas & Pasco Counties



Makeba Huntington-Symons, M.A.

Senior Community Engagement Manager

727.220.4446 | [mahuntingtonsymons@alz.org](mailto:mahuntingsymons@alz.org)

For virtual programs see table of contents.

PRIVATE AND PERSONALIZED PROGRAMS

We tailor programs for specific groups such as civic organizations, chambers of commerce, companies, and more. Please reach out to arrange a private, personalized, no-cost program for your group or to invite us to your local event or health fair.

- Eventing

COMMUNITY EDUCATION & OUTREACH

MCI/EARLY STAGE/YOUNG ONSET SUPPORT GROUPS

Registration required, please call 800.272.3900.

Hillsborough County

1st Tuesday 6:30 p.m.

Bayshore Presbyterian Church, 2515 Bayshore Blvd, Com. Room, Tampa 33629

4th Friday 11 a.m.

National Louis University, 6550 W Hillsborough Ave., Tampa 33634

CAREGIVER SUPPORT GROUPS

Hillsborough County

4th Monday 1 p.m.

St. Andrew Presbyterian Church, 1239 W Del Webb Blvd, Rm 2, Sun City Center



GREATER TAMPA BAY

Hillsborough, Pinellas & Pasco Counties

2nd Tuesday, 12 p.m.

Hyde Park Methodist, 500 W. Platt Street, Tampa 33606. RSVP required.
(Hybrid, in-person and virtual via Zoom)

3rd Tuesday, 6:30 p.m. & 4th Wednesday at 2 p.m.

Tessera of Brandon, 1320 Oakfield Drive, Brandon 33511. RSVP required.
(Hybrid, in-person and virtual via Zoom)

2nd Tuesday, 12 p.m.

Hyde Park Methodist, 500 W. Platt Street, Tampa 33606. RSVP required.
(Hybrid, in-person and virtual via Zoom)

3rd Tuesday, 6:30 p.m. & 4th Wednesday at 2 p.m.

Tessera of Brandon, 1320 Oakfield Drive, Brandon 33511. RSVP required.
(Hybrid, in-person and virtual via Zoom)

3rd Wednesday, 12 p.m.

St. James United Methodist, 16202 Bruce B. Downs Blvd., Tampa 33647

1st Thursday, 3 p.m.

Phyllis Busansky Adult Day Center, 4102 West Spruce Street, Tampa 33607

1st Thursday, 6 p.m.

Arden Courts of Largo, 300 Highland Ave., Largo 33770

2nd Thursday, 3 p.m.

Plant City Adult Day Center, 1205 S. Waller Street, Plant City 33566

3rd Thursday at 3 p.m.

Wimauma Adult Day Center, 16621 Lagoon Shore Blvd., Wimauma 33598
*Respite available

4th Thursday at 2 p.m.

Bloomingdale Adult Day Center, 3940 Canoga Park Dr., Brandon, FL 33511

4th Friday, at 10 a.m.

National Louis University, 6550 W Hillsborough Ave., Tampa 33634

Pasco County

1st Thursday, 10 a.m.

Land O' Lakes Public Library, 2818 Collier Pkwy., Land O' Lakes 34639

2nd Tuesday, 6 p.m.

Regency Park Library, 9701 Little Rd., New Port Richey, 34654

2nd Thursday, 1 p.m.

New Port Richey Public Library, 5939 Main St, New Port Richey, FL 34652

2nd Wednesday, 3 p.m.

Compass Rose of Zephyrhills, 37411 Eiland Blvd., Zephyrhills 33542

3rd Wednesday, 6 p.m.

Land O' Lakes United Methodist Church, 6209 Land O'Lakes Blvd., Land O' Lakes

Pinellas County

Every Monday, 9:30 a.m.

Unity of Palm Harbor, 1960 Tampa Road, Palm Harbor 34683

1st and 3rd Monday, 1 p.m.

Madonna Ptak Memory Disorders Clinic, 430 Morton Plant St., Ste. 401, Clearwater

Every Wednesday, 10 a.m.

Hale Activity Ctr. Dunedin, 330 Douglas Avenue, Dunedin 34698

1st, 2nd, & 3rd Thursday, 2 p.m.

St. Anthony's Memory Disorders Center, Professional Office Building
1201 5th Avenue, N., Suite 309, St. Petersburg 33705

2nd Tuesday, 9:30 a.m.

Largo Public Library, 120 Central Park Drive, Largo 33771

2nd Tuesday, 10 a.m.

Arden Courts of Palm Harbor, 2895 Tampa Road, Palm Harbor 34684

2nd Tuesday, 6:30 p.m.

The Karol Hotel Crown Boardroom, 2675 Ulmerton Rd. Clearwater 33762

GREATER TAMPA BAY

Hillsborough, Pinellas & Pasco Counties

2nd Wednesday, 12:15 p.m.

East Lake Public Library, 4125 E. Lake Road S., Palm Harbor 34685

3rd Wednesday, 6 p.m.

TLC Adult Day Care & Recreation Center, 3970 Tampa Rd., Unit J., Oldsmar

4th Thursday 10 a.m.

Craft Kafe Downtown 200 Central Avenue, St. Petersburg 33701

4th Thursday 10 a.m.

The Plaza at The Palms of Largo, 385 Alt Keene Rd, Largo 33771



GREATER SARASOTA & SUN CITY CENTER

Desoto, Manatee & Sarasota Counties



Silvia Caldwell, LPN

Community Engagement Manager

727.270.9894 | sicaldwell@alz.org | [LinkedIn](#)

For virtual programs see table of contents.

PRIVATE AND PERSONALIZED PROGRAMS

We tailor programs for specific groups such as civic organizations, chambers of commerce, companies, and more. Please reach out to arrange a private, personalized, no-cost program for your group or to invite us to your local event or health fair. Thank you to the following organization(s).

- Ridgewood MHP
- Discovery Village

COMMUNITY EDUCATION & OUTREACH

Manatee County

Manatee County Health & Wellness Expo 2026

Tuesday, April 7, 4 p.m.

Bradenton Area Convention Center, 1 Haben Blvd, Palmetto 34221

Building Brain-Healthy Habits

Wednesday, May 27, 12:45 p.m.

Redeemer Lutheran Church, 6311 3rd Ave. West Bradenton 34209

Caregiver Support Groups

DeSoto County

2nd Thursday, 12 p.m.

Senior Friendship Center, 917 N Arcadia Ave., Arcadia 34266

Manatee County

1st & 3rd Wednesday, 10 a.m.

Emmanuel Baptist Church, 8305 US-301, Parrish 34219

1st Thursday at 10 a.m.

Westminster Bradenton at The Manor, 1700 21st Avenue West, Bradenton



2nd Tuesday at 6 p.m.

Bradenton Research Center, 3924 9th Ave W., Bradenton 34205

4th Wednesday 10 a.m.

Key Clinical Research, 6060 26th Street West, Bradenton 34207

2nd & 4th Thursday, 10 a.m.

Elan Manatee, 7375 Stone River Road, Bradenton 34203

Sarasota County

Every Monday at 10 a.m.

Church of Palms, 3224 Bee Ridge Rd., Sarasota 34239

1st Tuesday, 11:30 a.m.

Frances T. Bourne Jacaranda Library, 4143 Woodmere Park Blvd, Venice 34293

3rd Wednesday, 10 a.m.

San Pedro Catholic Church, 14380 Tamiami Trail, North Port 34287

Every Thursday at 4 p.m.

Church of Palms, 3224 Bee Ridge Rd., Sarasota 34239



GREATER SARASOTA & SUN CITY CENTER

Desoto, Manatee & Sarasota Counties



SOUTHWEST FLORIDA

Charlotte, Collier, Glades, Hendry, Lee & Monroe Counties



Lisa L. Kiddon

Community Engagement Manager

727.316.8341 | lkiddon@alz.org | [LinkedIn](#)

For virtual programs see table of contents.

PRIVATE AND PERSONALIZED PROGRAMS

We tailor programs for specific groups such as civic organizations, chambers of commerce, companies, and more. Please reach out to arrange a private, personalized, no-cost program for your group or to invite us to your local event or health fair.

- Hilton Naples
- Clewiston Country Club
- Pelican Preserve

COMMUNITY EDUCATION & OUTREACH

Charlotte County

Brain Bus Stop at Sacred Heart Church

Thursday, April 9, 9 a.m.

Sacred Heart Church, 211 W. Charlotte Ave., Punta Gorda 33950

Brain Bus Stop at Human Services of Charlotte County

Thursday, April 16, 9 a.m.

Human Services, 21500 Gibraltar Dr., Port Charlotte 33952

Brain Bus Stop at YMCA Port Charlotte

Wednesday, May 20, 10 a.m.

YMCA Port Charlotte, 19333 Quesada Ave., Port Charlotte 33948

Collier County

Health Fair

Monday, April 27, 10 a.m.

Baker Senior Center, 6200 Autumn Oaks Lane, Naples 34119



SOUTHWEST FLORIDA

Charlotte, Collier, Glades, Hendry, Lee & Monroe Counties

Brain Bus Stop at Seminole Hotel & Casino Immokalee

Thursday, May 21, 10 a.m.

Seminole Hotel & Casino Immokalee, 506 1st, Immokalee 34142

Glades County

Brain Bus Stop at Moore Haven

Wednesday, June 24, 9:30 a.m.

Moore Haven, 301 10th St., Moore Haven 33471

Brain Bus Stop at V A Health Care Center

Thursday, June 4, 9 a.m.

VA Health Care Center, 2489 Diplomat Pkwy E., Cape Coral 33909

CAREGIVER SUPPORT GROUPS

Charlotte County

1st Tuesday, 5:15 p.m.

Hatchery, 42881 Lake Babcock Drive, Suite 200 Babcock Ranch 33908

2nd Monday, 5:15 p.m.

ActivAge at Chelsea Place, 3626 Tamiami Trl., Port Charlotte 33952

2nd Tuesday, 4 p.m.

Punta Gorda Isles Civic Association, 2001 Shreve St., Punta Gorda 33950

Lee County

1st Tuesday at 10 a.m.

Cypress Cove, 10200 Cypress Cove Drive, Fort Myers 33908

2nd Wednesday at 1 p.m. and 4th Friday at 10 a.m.

Good Shepherd United Methodist Church, 2951 Trail Dairy Cir., North Fort Myers

2nd Thursday at 10 a.m.

The Terraces at Bonita Springs, 26455 S. Tamiami Trail, Bonita Springs 34134

3rd Tuesday at 10 a.m.

Gulf Coast Village 1333 Santa Barbara Blvd., 4th Floor Craft Room, Cape Coral



3rd Thursday at 10 a.m.

Lee Healthy Life Center, Coconut Point, 23450 Via Coconut Point, Estero 33928



GREATER TREASURE COAST, BREVARD & OSCEOLA

Brevard, Indian River, Martin, Okeechobee, Osceola & St. Lucie Counties



Evelyn Espinal, BBA

Community Engagement Manager

305.503.0468 | eaespinal@alz.org | [LinkedIn](#)

For virtual programs see table of contents.

PRIVATE AND PERSONALIZED PROGRAMS

We tailor programs for specific groups such as civic organizations, chambers of commerce, companies, and more. Please reach out to arrange a private, personalized, no-cost program for your group or to invite us to your local event or health fair.

- Eventing

COMMUNITY EDUCATION & OUTREACH

Brevard County

Health Fair

Thursday, April 2, 11 a.m.

Palm Cottages, 3821 Sunnyside Ct, Rockledge 32955

Health Fair

Tuesday, April 21, 11 a.m.

IRC Healthy Start, 625 Highland Drive SW, Vero Beach 32962

Health Fair

Friday, April 24, 10 a.m.

Viera Regional Community Center, 2300 Judge Fran Jamieson Way, Melbourne 32940

Indian River

Brain Bus Stop at Indian River County Fairgrounds and Expo Center

Thursday, April 23, 9:30 a.m.

Indian River County Fairgrounds and Expo, 7955 58th Ave., Vero Beach 32967

Okeechobee County

Supporting Brain Health in Our Community

Saturday, April 11, 11 a.m.

Kiwanis Park, 350 NW 6th Ave., Okeechobee 34972



Osceola County

Brain Bus Stop at UF Extension Services

Saturday, April 11, 10 a.m.

UF Extension Services, 1921 Kissimmee Valley Lane, Kissimmee 34744

St. Lucie County

Supporting Brain Health in Our Community

Friday, April 3, 10 a.m.

Florida Blue, 3213 SW Port St Lucie Blvd, Port St. Lucie 34953

Health Fair

Saturday, April 11, 10 a.m.

Early Learning Coalition, 2000 Virginia Avenue Fort Pierce 34982

Alzheimer's Community Forum

Thursday, April 16, 12 p.m.

Harbor Place, 3700 SE Jennings Rd, Port St. Lucie 34952

Health Fair

Saturday, April 25, 10:30 a.m.

River of Life Fellowship Church, 3950 Juanita Avenue, Ft. Pierce 34946

Brain Bus Stop at Clover Park

Saturday, April 25, 9 a.m.

Clover Park, 31 NW Stadium Dr., Port St. Lucie 34986

Brain Bus Stop at United Against Poverty, Inc.

Saturday, May 9, 9 a.m.

United Against Poverty, Inc., 2520 Orange Avenue, Fort Pierce 34947

CAREGIVER SUPPORT GROUPS

Brevard County

2nd and 4th Tuesday, 10:30 a.m.

Rockledge Presbyterian Church, 921 Rockledge Dr., Rockledge 32955



St. Lucie County

2nd & 4th Tuesday at 10:30 a.m.

Harbor Place, 3700 SE Jennings Road, Port St. Lucie, 34952

2nd Thursday, 10 a.m.

Golden Ponds Home Community, 1800 Golden Ponds Dr., Fort Pierce 34945



Olivia Matute, B.S.

Community Engagement Manager

772.236.7607 | omcurtis@alz.org | [LinkedIn](#)

For virtual programs see table of contents.

PRIVATE AND PERSONALIZED PROGRAMS

We tailor programs for specific groups such as civic organizations, chambers of commerce, companies, and more. Please reach out to arrange a private, personalized, no-cost program for your group or to invite us to your local event or health fair. Thank you to the following organization(s)

- Prime Expos
- Huntington Lakes

COMMUNITY EDUCATION & OUTREACH

Brain Bus Stop at Hester Community Center

Saturday, April 4, 10 a.m.

Hester Community Center, 1901 N Seacrest Blvd., Boynton Beach 33435

Brain Bus Stop at Palm Beach Neuroscience Institute

Thursday, April 16, 10 a.m.

Neuroscience Institute, 7593 W. Boynton Beach Blvd STE 140, 33437

Brain Bus Stop at Torry Island

Saturday, April 18, 10 a.m.

Torry Island, 5000 West Canal Street North, Belle Glade 33430

Brain Bus Stop at Hilton Palm Beach Airport

Thursday, May 14, 10:30 a.m.

Hilton Palm Beach Airport, 150 Australian Ave., West Palm Beach 33406

Brain Bus Stop at Faith Based Health Educators

Saturday, June 6, 10 a.m.

Faith Based Health Educators, 560 East Main Place Pahokee 33476

PALM BEACH COUNTY

MCI / EARLY STAGE / YOUNG ONSET SUPPORT GROUPS

Registration required, please call 800.272.3900.

2nd Wednesday, 2 p.m.

Brain Matters Research, Delray Beach 33445

1st Thursday, 1:30 p.m.

Palm Beach Neurology & Premiere Research Institute, West Palm Beach 33407

2nd Wednesday, 4 p.m.

JEM Research Institute, Lake Worth 33462

CAREGIVER SUPPORT GROUPS

2nd Tuesday, 10:30 a.m.

Wellington Bay, 2590 Wellington Bay Dr., Wellington 33414

2nd Wednesday, 1 p.m.

Mae Volen Center 1515 W. Palmetto Park Rd., Boca Raton 33486

2nd Thursday, 1:30 p.m.

Palm Beach Premiere Research, 4631 N. Congress Ave., West Palm Beach

3rd Tuesday, 11 a.m.

YMCA, 9600 South Military Trail, Boynton Beach 33436

4th Tuesday, 11 a.m.

Brain Matters Research, 800 NW 17th Ave., Delray Beach 33445

4th Tuesday, 4:15 p.m.

JEM Research Institute, 142 John F Kennedy Dr., Lake Worth 33462



4th Wednesday, 1 p.m.

Mae Volen Center, 1515 W Palmetto Park Rd., Boca Raton 33486

4th Thursday, 6 p.m.

New Day Adult Day Care, 301 Ebbtide Dr., Suite H, N., Palm Beach 33408



Samrah Mitha, MPH

Community Engagement Manager

786.847.7456 | snmitha@alz.org | [LinkedIn](#)

For virtual programs see table of contents.

PRIVATE AND PERSONALIZED PROGRAMS

We tailor programs for specific groups such as civic organizations, chambers of commerce, companies, and more. Please reach out to arrange a private, personalized, no-cost program for your group or to invite us to your local event or health fair.

- Prime Expos

COMMUNITY EDUCATION & OUTREACH

Brain Bus Stop at Seminole Hard Rock

Monday, April 6, 10 a.m.

Seminole Hard Rock, 1 Seminole Way, Davie 33314

Brain Bus Stop at African-American Research Library and Cultural Center

Tuesday, June 23, 10:30 a.m.

Research Library and Cultural Center, 2650 Sistrunk Blvd, Fort Lauderdale 33311

CAREGIVER SUPPORT GROUP

1st and 3rd Saturday, 10 a.m.

John Knox Village, 651 SW 6th St., Pompano Beach, FL 33060

2nd Tuesday, 5:30 p.m.

The Meridian Waterways, 3001 E. Oakland Park Blvd., Ft. Lauderdale 33306

3rd Wednesday, 2 p.m.

Northwest Regional Library, 3151 University Dr., Rm 214, Coral Springs 33065

3rd Wednesday, 6 p.m.

Covenant Living of Florida, 9215 W. Broward Blvd., Fort Lauderdale 33306





MIAMI-DADE COUNTY



Joe H. Baldelomar, Psy.M.

Bilingual Community Engagement Manager

786.761.5524 | jhbaldelomar@alz.org | [LinkedIn](#)

For virtual programs see table of contents.

PRIVATE AND PERSONALIZED PROGRAMS

We tailor programs for specific groups such as civic organizations, chambers of commerce, companies, and more. Please reach out to arrange a private, personalized, no-cost program for your group or to invite us to your local event or health fair.

- Doubletree Miami Airport

COMMUNITY EDUCATION & OUTREACH

Brain Bus Stop at Sunrise of Coral Gables

Tuesday, April 14, 12 p.m.

Sunrise of Coral Gables, 1000 Ponce De Leon Blvd., Coral Gables 33134

Brain Bus Stop at New Life Baptist Church

Saturday, April 18, 10 a.m.

New Life Baptist Church, 1365 NW 54th St , Miami 33142

Understanding Alzheimer's and Dementia

Wednesday, April 15, 11 a.m.

North Dade Regional Library, 2455 NW 183rd St., Miami Gardens 33056

Brain Bus Stop at Milander Center of the Arts and Entertainment

Thursday, April 30, 10 a.m.

Milander Center of the Arts and Entertainment, 4800 Palm Ave., Hialeah 33012

Brain Bus Stop at North Dade Regional Library

Saturday, May 30, 2 p.m.

North Dade Regional Library, 2455 NW 183 St., Miami Gardens 33056



Brain Bus Stop at New Birth Baptist Church

Sunday, May 31, 9:30 a.m.

New Life Missionary Baptist Church, 1365 NW 54th St., Miami 33142

Brain Bus Stop at Westchester Regional Library

Wednesday, June 10, 10 a.m.

Westchester Regional Library, 9445 Coral Way, Miami 33165

Brain Bus Stop at Senior Planet

Friday, June 12, 10 a.m.

Senior Planet, 317 NW 28th St., Wynwood 33127

Brain Bus Stop at UF IFAS

Saturday, June 13, 9 a.m.

UF IFAS, 18710 SW 288th St., Homestead 33030

CAREGIVER SUPPORT GROUPS

Miami-Dade County

2nd Monday, 6 p.m., In-Spanish

Coral Gables Branch Library, 3443 Segovia Street, Coral Gables 33134

2nd Thursday, 12:30 p.m.

Northeast Dade, Aventura Library, 2930 Aventura Blvd., Aventura 33180

2nd Friday, 12:30 p.m.

Pinecrest Community Center, 5855 Killian Dr., Pinecrest 33156

4th Tuesday 7 p.m.

The Palace Suites, 11377 SW 84th St., Miami 33173

4th Thursday, 12:30 p.m.

Coral Gables Adult Activity Center, 2 Andalusia Ave., Coral Gables 33134



VOLUNTEER

with the

Alzheimer's Association

VOLUNTEER OPPORTUNITIES:

- Community connector
- Community educator
- Support group facilitator
- Event committee member
- Advocate
- Brand ambassador
- Data entry volunteer

For more information email alzflnews@alz.org or reach out to your local community engagement manager.



COMMUNITY ENGAGEMENT



Keith Gibson

Sr. Director, Community Engagement

561.414.2365 | kgibson@alz.org | [LinkedIn](#)



DID YOU KNOW

Although African Americans and Hispanics are more likely than Whites to have Alzheimer's or another dementia, studies show that they are less likely to have a diagnosis. And delays in diagnosis mean that certain groups are not getting treatments when they are most likely to be effective at improving quality of life. For more information, please see the Association's Alzheimer's Disease Facts and Figures special report on [Race, Ethnicity and Alzheimer's in America](#) (PDF).

Resources

- [Veterans and Dementia](#)
- [Asian Americans and Pacific Islanders and Alzheimer's](#)
- [Black Americans and Alzheimer's](#)
- [Hispanic Americans and Alzheimer's](#)
- [LGBTQ+ Community Resources for Dementia](#)
- [Native Americans and Alzheimer's](#)



THE INTERSECTION OF IDD AND ALZHEIMER'S



DID YOU KNOW

Individuals with Down syndrome have a higher than 90% lifetime risk of developing Alzheimer's disease.

Resources

- [Down Syndrome and Alzheimer's](#)
- [NDSS Aging and Down Syndrome Guidebook](#)
- [NDSS Alzheimer's and Down Syndrome: A Practical Guidebook for Caregivers](#)
- [NTG Early Detection Screen for Dementia](#)

BRAIN HEALTH & AGING SUMMIT

MARCH 25, 2026

Join experts in neuroscience, public health, and aging services for a deep dive into the latest research and real-world strategies for improving cognitive wellness through diet, daily habits, policy, and community support. This live and interactive event will bring together professionals and advocates committed to advancing brain health through equity, innovation, and care.

- Learn more and RSVP for [in-person attendance](#)
- Learn more and RSVP [for virtual attendance](#)



FOR PROFESSIONALS

CARE PROVIDERS

The Alzheimer's and Dementia Care ECHO® Program for Professional Care Providers

The Alzheimer's and Dementia Care ECHO Program connects multidisciplinary dementia care experts with professional care providers in a free continuing education series of interactive, case-based video conferencing sessions.

Project ECHO aims to improve health outcomes through a team-based approach while reducing geographic barriers and the cost of care. This dementia care training series from the Alzheimer's Association is one of the first in the country focused on improving access to quality dementia care in the long-term setting. [Learn more.](#)

See the impact of Project ECHO

The 2025 Annual Report shows our efforts to empower professionals to deliver high-quality dementia care in their communities.

- [Download the PDF](#)

ALZHEIMER'S AND PUBLIC HEALTH ACTION IN FLORIDA



Alzheimer's disease is a growing public health crisis in Florida, and the impact of Alzheimer's is projected to rise. A comprehensive public health approach is essential to improve community health, support the well-being of those living with cognitive decline and their families, and reduce the risk of dementia throughout communities. The most recent data show:

- 580,000 people aged 65 and older are living with Alzheimer's in Florida.
- 18.6% of people aged 45 and older have subjective cognitive decline in Florida.
- 870,000 family caregivers provide essential support to people living with dementia in Florida.
- 1.3 billion hours of unpaid care are provided by dementia caregivers in Florida.
- \$28.4 billion is the value of unpaid care provided in Florida.
- \$3.7 billion is the cost of Alzheimer's to the state Medicaid program.

[Learn more.](#)

Empowering Professionals in the Fight Against Dementia

What is ALZPro?

ALZPro is the Alzheimer's Association's hub for professional resources. It unites care resources, research, data platforms, clinical guidelines, continuing education and implementation tools — all on one trusted platform. ALZPro empowers professionals to reduce risk, advance early detection, improve care and expand equitable access.

The ALZPro Advantage

ALZPro equips you with essential tools to deliver equitable, evidence-informed, person-centered care.

ALZPro provides:

- **Instant access to streamlined tools, resources, research**
and training
- **Timely, relevant scientific findings and clinical insights,**
tailored for busy professionals
Practical resources that directly support your work and the people you serve
The opportunity to connect and collaborate with peers and leading experts
- **Opportunities for continuing education credits, online**
training and certifications

Join the professionals shaping the future of dementia care at alz.org/ALZPro.

FOR RESEARCHERS

RESEARCH

Scientific Conferences

The Alzheimer's Association offers year-round opportunities for the scientific community to network and learn about Alzheimer's and dementia research. Events include the Alzheimer's Association International Conference® (AAIC®) — the world's largest meeting dedicated to advancing dementia science — and a variety of in-person and virtual conferences, symposia and other events. [Learn more.](#)

Welcome to the ISTAART Community

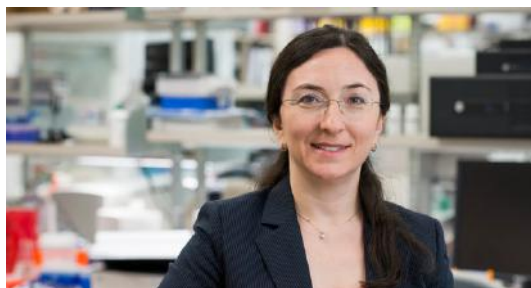
ISTAART is a global network of scientists and clinicians focused on advancing Alzheimer's research and treatment. Members collaborate to share knowledge and breakthroughs. Joining ISTAART allows you to connect with peers, explore networking opportunities, and stay updated on scientific advancements. [Learn more.](#)

Grant Programs

The Alzheimer's Association International Research Grant Program (IRGP) funds investigations to advance our understanding of Alzheimer's disease, identify new treatment strategies, improve care for people with dementia and further our knowledge of brain health and disease prevention. [Learn more.](#)

Upcoming Event

Research Grant Workshop on March 24, 2026, from 8:30–10:30 a.m. at FAU Boca Campus, with hybrid attendance options available. Join us to advance your research career. [Learn more.](#)



ALZHEIMER'S ASSOCIATION® FLORIDA CHAPTERS: YOUR IMPACT IN 2025

LEADING THE FIGHT AGAINST ALZHEIMER'S AND ALL OTHER DEMENTIA

ENGAGE INDIVIDUALS AND COMMUNITIES.

- Reached nearly 80,000 Floridians through education, care and support, awareness and the 24/7 Helpline.
- Provided education and support to more than 20,000 Floridians in all 67 counties through the Alzheimer's Association Brain Bus and mobile brain health outreach.



ACCELERATE RESEARCH, TRANSLATION AND IMPLEMENTATION.

- Awarded \$7.8 million in active research funding at Florida institutions
- Selected 58 individuals from FL institutions to serve as grant reviewers
- Engaged with 400+ scientists, clinicians and dementia professionals across Florida through the ISTAART program



4 STRATEGIC LEVERS OF CHANGE

ENABLE COMMUNITIES AND SYSTEMS TO DELIVER QUALITY AND EQUITABLE CARE.

- Florida advocates rallied for critical federal and state legislation:
 - Supported \$10 million in additional state funding to reduce respite care wait times and other caregiver services
 - Lobbied in support of new legislation in Congress, including the Alzheimer's Screening and Prevention (ASAP) Act, Credit for Caring Act and the Accelerating Access to Dementia & Alzheimer's Provider Training (AADAPT) Act



FOSTER COLLABORATION AND UNDERSTANDING.

- Engaged more than 2,400 volunteers across the state to educate and build awareness to reduce stigma, focus on brain health and advocate for individual and community needs
- Partnered with the Florida Department of Elder Affairs to reach nearly 69,000 Floridians through awareness education



ONLY POSSIBLE THROUGH YOUR DONATIONS



\$6 MILLION
raised through
24 Walk to End Alzheimer's events



\$600K
raised through
Do What You Love to End ALZ



\$1.3 MILLION
raised through
3 galas

24/7 Helpline
800.272.3900

alz.org®

Scan for more
resources



DO WHAT YOU LOVE. HELP END ALZHEIMER'S.

Hiking, golfing, gaming, crafting, play pickleball or bridge, host a cookout or purple party — no matter what your passion is, you can make it a fundraiser to end Alzheimer's and all other dementia.

So select an activity, pick a date and fundraise for a future without Alzheimer's.

Visit alz.org/dowhatyoulove to get started.

DO WHAT YOU LOVE TO END ALZ
ALZHEIMER'S ASSOCIATION



Florida Galas



For sponsorship opportunities and more in the Tampa Bay Area, email Christine Feller at cfeller@alz.org



For sponsorship opportunities and more in Greater Orlando, email Denise Ward at dlward@alz.org



For sponsorship opportunities and more in South Florida, email Liesl Mejias at limejias@alz.org

**WALK
TO END
ALZHEIMER'S**
ALZHEIMER'S ASSOCIATION

THANK YOU

FOR AN INCREDIBLE 2025 SEASON



We Need Your Voice

BECOME AN ADVOCATE TODAY!



Because of advocates, we've passed critical legislation and increased federal research funding. Our work isn't done.

We'll train you to advocate. Whatever your experience and availability, we're eager to have you on our advocacy team!

- Meet with elected officials.
- Share your story.
- Spark conversation on social media.
- Engage the media.
- Widen our reach.
- Build relationships with officials and staff.

CONTACT US

Jennifer Braisted | jbraisted@alz.org

 [@alzadvocacyfl](https://twitter.com/alzadvocacyfl)

 [@alzadvocacyfl](https://www.instagram.com/alzadvocacyfl)



Stay Up to Date

Weekly E-News

Every Wednesday, you'll receive the latest information on Alzheimer's care and support, advances in research, upcoming events in your chapter, as well as inspirational stories and resources for people living with the disease and their caregivers. Sign up at alz.org/enews.



Follow & Tag Us on Social!

Chapter Accounts

Central & North Florida Chapter | @AlzCnfl
[Facebook](#) | [Instagram](#) | [X](#)

Florida Gulf Coast Chapter | @AlzFIGulf
[Facebook](#) | [Instagram](#) | [X](#)

Southeast Florida Chapter | @AlzSefl
[Facebook](#) | [Instagram](#) | [X](#)

Statewide Accounts

[LinkedIn](#) Alzheimer's Association, Florida
[TikTok](#) @AlzFlorida
[YouTube](#) @AlzFlorida



Alz MindFL - Florida's Alzheimer's & Dementia Blog

Another great way to stay up to date is by subscribing to our blog, Alz MindFL. The blog features stories from across Florida including care tips, research updates, volunteer spotlights, inspirational stories, upcoming events and more. Check it out and subscribe at alzmindfl.org.





Advancing Alzheimer's and dementia research starts with you. Help shape the next breakthrough with TrialMatch®.



It takes **everyone** to advance Alzheimer's research.

By joining research studies, you can help us develop the next generation of dementia treatments, diagnostic tools, care and prevention strategies.

Get involved through the Alzheimer's Association TrialMatch® — a tool for people with cognitive impairment, dementia, caregivers and healthy participants to quickly and easily learn more about research opportunities taking place throughout the United States and across the world. Confidentially search hundreds of drug and non-drug studies, sign up, receive email notifications about new opportunities or connect with research teams.

Participate in three easy steps:

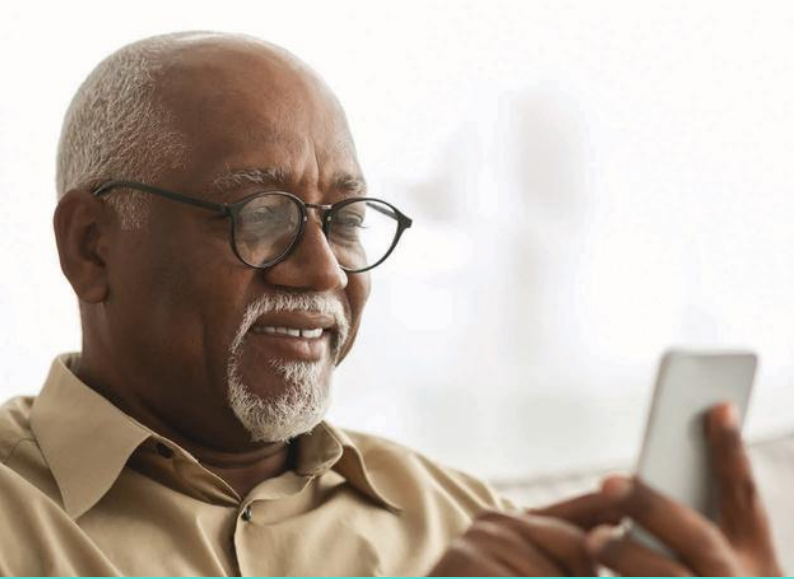
1. Begin your journey by signing up on our dedicated TrialMatch platform.
2. Answer 10 simple questions about yourself or the person you're helping to sign up to help personalize your study matches.
3. Review your study matches to explore studies that may be a good fit.

Get started today.



alz.org/TrialMatch | 800.272.3900

trialmatch[®]
ALZHEIMER'S ASSOCIATION



Click for local support, information, resources, upcoming events and more.



VISIT ALZ.ORG

Caring for someone with Alzheimer's isn't easy.

Reaching us is.

24/7 Helpline: 800.272.3900



Get empowered in your Alzheimer's journey

Take action with the My ALZ Journey app



A diagnosis can feel overwhelming, but My ALZ Journey can help you navigate your diagnosis of Alzheimer's or another dementia and move forward.

Download the app today in the Apple App Store or Google Play Store to learn what to expect and how to plan ahead.

alz.org/MyALZJourney

If you have any inquiries, feel free to reach out to us anytime at 800.272.3900.

We want to recognize the essential contributions of our volunteers and everyone who supports our vision: a world without Alzheimer's and all other dementia®.

*Thank
you!*

ALZHEIMER'S  ASSOCIATION®