



# AI-Assisted Orchestration in Wireline Telecom Engineering

Bridging AI Reasoning, Engineering Tools, and Human  
Governance in Telecom Network Design



## Introduction

# The Coordination Gap in Modern Telecom Engineering

Broadband network expansion continues to accelerate as telecom operators invest heavily in fiber infrastructure to support rising connectivity demand. However, despite advancements in automation technologies, many wireline projects still experience operational challenges during design and deployment phases.

Engineering teams regularly encounter issues such as design-to-field mismatches, permit rejections, documentation revisions, and delays in final handovers. These challenges affect delivery timelines, increase operational costs, and create uncertainty across project stakeholders.

The root cause is rarely the lack of automation.

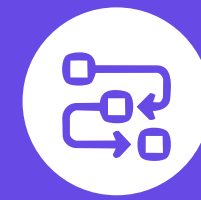
Modern engineering environments already rely on deterministic systems such as Computer-Aided Design (CAD) platforms, Geographic Information Systems (GIS), and rule-based automation scripts. These technologies execute predefined tasks with accuracy and repeatability.



However, the real coordination challenge occurs in areas such as:



Interpreting engineering intent from unstructured inputs



Sequencing multiple tools and workflows



Maintaining state across complex design updates



Ensuring governance oversight during decision making

As AI adoption expands across industries, telecom leaders face an important question:

**How can AI reasoning capabilities be introduced without compromising deterministic execution, regulatory compliance, and engineering accountability?**

This eBook introduces Techwave's AI-assisted orchestration framework, supported by Nalora, a governance-driven approach in which:

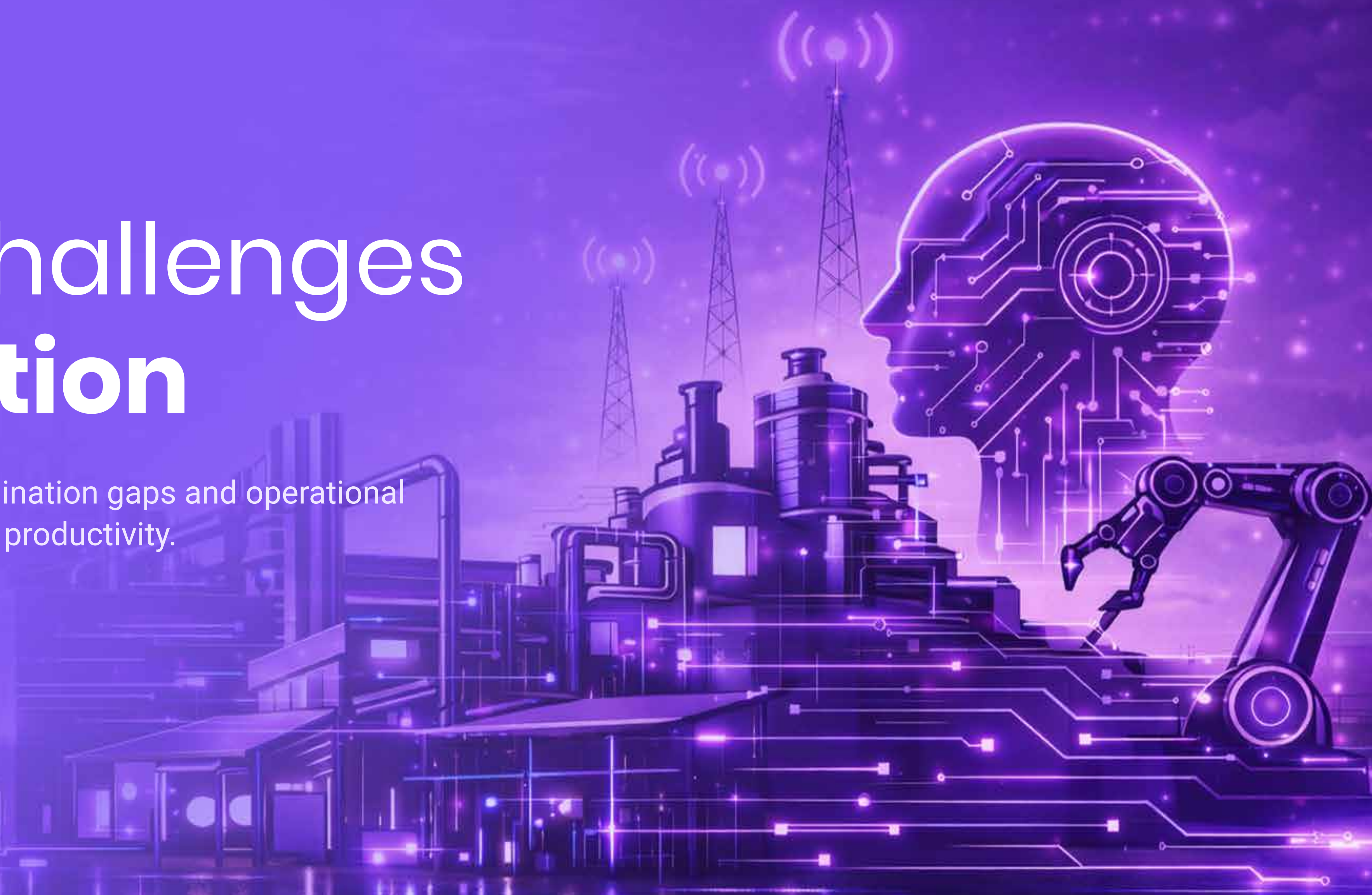
- ✔ **AI functions as a reasoning and coordination layer**
- ✔ **Deterministic CAD and GIS automation performs execution**
- ✔ **Engineers remain responsible for validation and approval**

This model allows telecom organizations to improve efficiency while maintaining trust, compliance, and operational control.

Chapter 1

# Industry Challenges in AI Adoption

Wireline network projects face coordination gaps and operational inefficiencies impacting engineering productivity.



### Design-to-Field Mismatches

Mismatch between design plans and field conditions.

### Repeated Survey Corrections

Ongoing revisions due to incomplete or changing data.

### Rework in As-Built Documentation

Updates needed for final network documentation.

### Regulatory Permit Review Cycles

Multiple review cycles with regulatory authorities.

### Increasing Onboarding Time for Engineerers

Engineers learn CAD, GIS, automation, workflows for efficient design.

## Operational Challenges

## < 50% Efficiency

### Capital Inefficiencies Due to Delays

- Idle crews and adjusted schedules
- Procurement and work costs escalate
- Reduced efficiency of network rollouts
- Delays disrupt construction schedules and increase costs

# 1.1 Operational Pressures in Wireline Projects

Wireline network design projects operate in a highly regulated and time-sensitive environment. Even with modern automation tools such as CAD systems and GIS platforms, several operational challenges continue to affect project timelines and engineering productivity.

**These challenges usually arise from coordination gaps between planning, design, and field execution:**



## Design-to-Field Mismatches

One of the most common challenges in wireline engineering is the difference between the planned design and actual field conditions.

Engineers typically design network routes using digital maps and design layers within CAD or GIS platforms. However, when field teams begin construction, they may discover obstacles that were not visible in the design stage, such as:

- Incorrect or outdated map data
- Physical infrastructure limitations
- Environmental or regulatory restrictions
- Utility conflicts with other underground or aerial infrastructure

When these discrepancies occur, the design must be revised and validated again. This leads to delays, additional surveys, and extra engineering effort.



## Repeated Survey Corrections

Engineering surveys are conducted to validate the feasibility of network routes before construction begins. However, survey results often require multiple corrections due to incomplete data, changing field conditions, or misinterpretation of engineering instructions.

Each correction requires engineers to revisit the design, update network layers, and revalidate the route. These repeated survey adjustments increase engineering workload and slow down the overall design cycle.



## Regulatory Permit Review Cycles

Wireline infrastructure projects require approval from regulatory authorities and local councils. These permits are necessary for activities such as trenching, pole installations, and right-of-way access.

Permit submissions often go through several review cycles. Authorities may request revisions to documentation, route plans, or compliance with details before granting approval.

Each revision requires engineering teams to update design documents, regenerate reports, and resubmit information.



## Rework in As-Built Documentation

After construction is completed, telecom operators must produce as-built documentation that accurately reflects the final network infrastructure.

### This documentation includes:

- Finalized network routes
- Updated GIS layers
- Equipment placement records
- Bill of materials and engineering reports



## Increasing Onboarding Time for Engineering Staff

Modern wireline design environments involve multiple software tools, automation scripts, and engineering workflows. New engineers must learn how to navigate these tools before they can work efficiently.

### Training often includes:

- Understanding CAD design interfaces
- Executing automation scripts
- Managing GIS data layers
- Following internal workflow procedures



## Capital Inefficiencies Due to Delays

Operational delays in the design phase often translate into financial inefficiencies. When engineering work slows down, construction schedules are affected. As a result:

- Construction crews may remain idle while waiting for design corrections
- Equipment procurement schedules may shift
- Project costs may increase due to repeated work

These delays reduce the overall efficiency of network rollout programs and affect return on infrastructure investments.

## 1.2 The Limitations of Traditional Automation

Automation tools play an important role in telecom engineering by executing predefined tasks quickly and accurately. However, these tools depend heavily on structured inputs and predefined workflows.

They perform well when instructions are clear and standardized. But when engineers receive unstructured information such as redlines, field notes, or complex design changes, additional coordination is required.

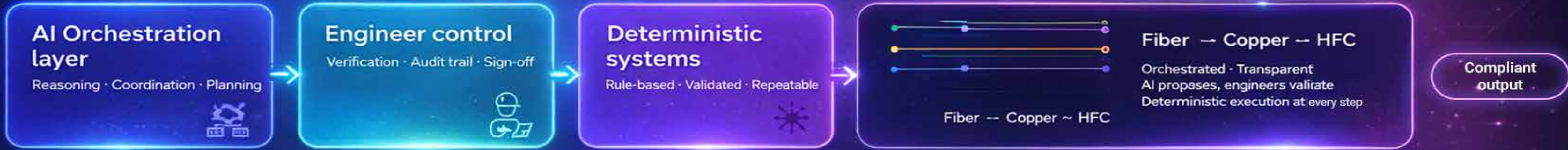
**As a result, engineering teams still spend considerable time in:**

- ≡ **Interpreting instructions**
- ≡ **Determining which tools to use**
- ≡ **Sequencing tasks across multiple systems**
- ≡ **Managing dependencies between workflows**

The core challenge is not the speed of automation. The challenge lies in coordinating engineering workflows effectively. This coordination gap is what AI-assisted orchestration aims to address.

# 1.3 AI Automation vs. Engineering Reality

## TELECOM INFRASTRUCTURE



VS

## OTHER INDUSTRIES



Telecom engineering demands AI orchestration



## AI Over Black-Box Automation in Telecom

Across many industries, AI is often promoted as a fully autonomous technology capable of replacing human decision-making. While this approach may work in some digital applications, telecom infrastructure design operates under very different conditions. Network planning and engineering decisions must be accurate, auditable, and compliant with regulatory standards.

Fully autonomous or “black-box” AI systems, where decision logic is not easily visible or explainable, can create risks in such environments. If an AI system generates a design change that engineers cannot clearly verify or trace, it may lead to compliance issues, design errors, or operational failures.

Infrastructure elements such as fiber routes, copper networks, and Hybrid Fiber-Coaxial (HFC) systems cannot rely on approximations. They require validated, rule-based execution.

For this reason, telecom engineering requires AI orchestration, where AI supports reasoning and coordination, while deterministic systems and engineers retain control of execution and validation.