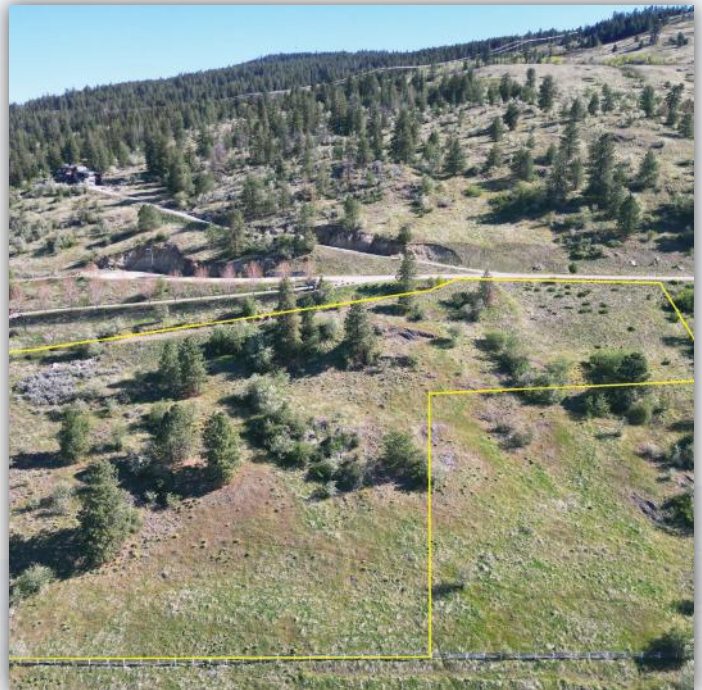


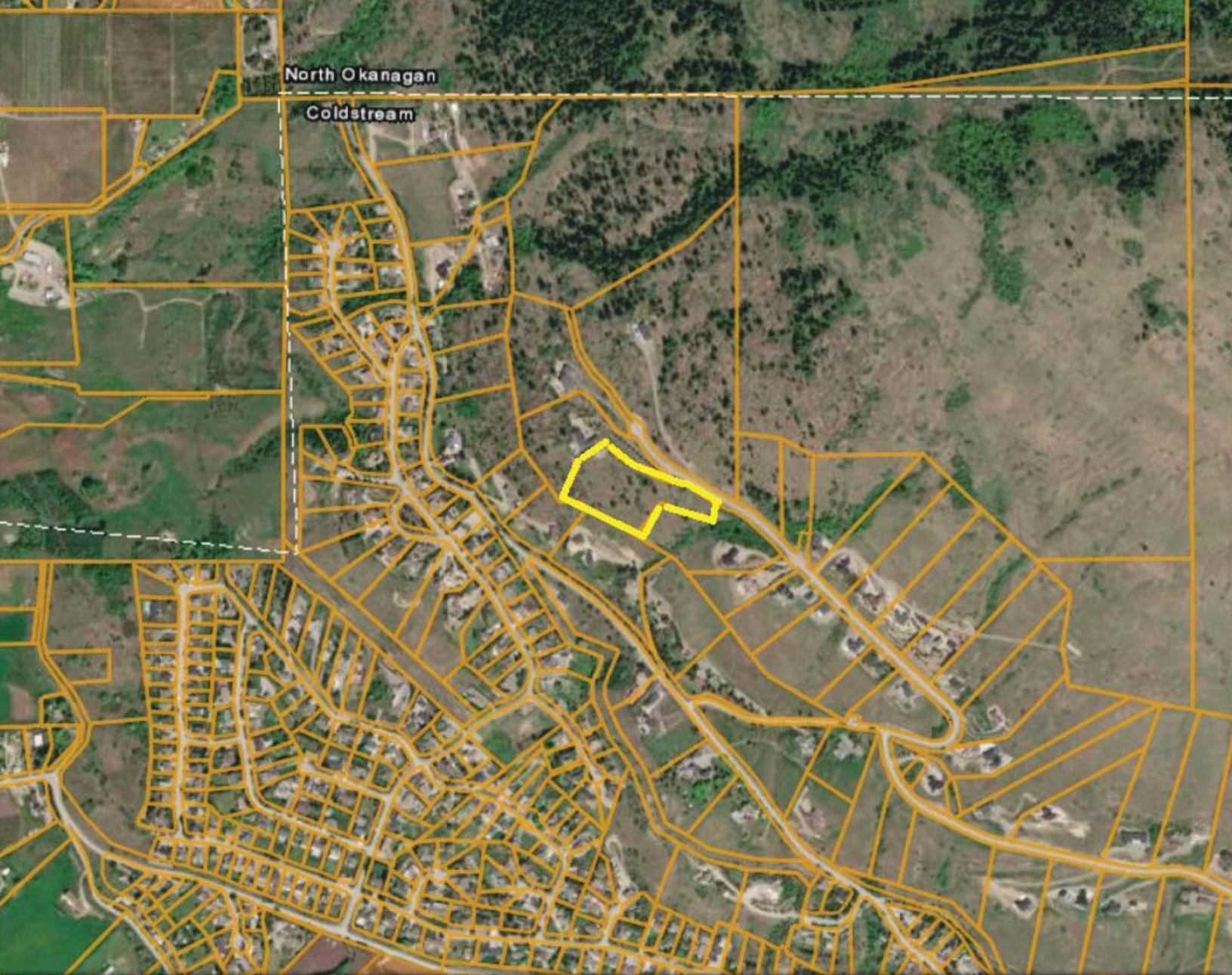
Online Timed Auction
5± Acre Vacant Residential
Parcel with Lakeview's
Coldstream, BC



5± Acre Lakeview Lot in the Okanagan

Build your dream home in one of Coldstream's most desirable settings. This 4.97± acre vacant residential parcel in Cypress Point at Coldstream Valley Estates offers sweeping views of Kalamalka Lake, the Coldstream Valley, surrounding mountains, and the City of Vernon. With a private hillside setting, paved road access, and services at the lot line, this property provides an exceptional opportunity for a custom executive home, outdoor living space, or private retreat. Located just minutes from city amenities, schools, beaches, and recreation, this rare Okanagan lot combines natural beauty, privacy, and convenience.





MARK YOUR CALENDAR

This Parcel Will Sell By Online Timed Real Estate Auction.



Auction Dates:

- Bidding Opens - 10 AM July 7 (PT)
- Bids Start Closing - 10 AM July 9 (PT)



Buy-It-Now:

An unconditional Buy it Now option is available until June 23rd.
Contact us for details.

HOW TO PLACE YOUR BID

1

In order to bid on any of our auctions, make sure to go to online bidding from your desktop or access the bidding platform directly from our app.

LOGIN

SIGN UP

Check that you are **logged in** to your account in the top right corner, and that you are **registered** for the auction.

2

Go to your desired sale and click or tap

LOTS

REGISTER TO BID

31 LOTS

3

Navigate to the lot you'd like to bid on and click or tap

PLACE BID

4

Bidding increases in **increments**. You can enter a custom bid or select an increment from the dropdown menu.

CAS

DISMISS ANY USE OF COOKIES POP-UPS THAT COULD INTERFERE WITH YOUR ABILITY TO BID.

Cookies help us deliver our services. By using our services, you agree to our use of cookies.

DISMISS

[Learn more.](#)

MAX BID

- The **Max Bid** is the highest amount you have bid on a lot and is only visible to you. Until someone bids above it, you are the **Winning Bidder**. You can edit your Max Bid at anytime.
- Our **Auto Max Bidding System** ensures that if another bidder places a bid below your Max Bid, they will be instantly outbid until you reach one increment higher than your max bid.

INDIVIDUAL LOTTING

- Most of the lots in our auctions have different closing times and are subject to their own time extension, not affecting other lots' closing time.

GROUP LOTTING

- Group Lotting** means that several lots are bundled together and share the same closing time.
- Group Lots can be identified by the thin gray outline surrounding them, and **GROUP (## Lots)** in the top left corner.

Note: Each lot within the group can be sold at a different price and/or to a different buyer

TIME EXTENSION

If a bid is placed in the last 2 minutes of the close time, the countdown will automatically reset to 2 minutes to ensure everyone has time to bid.

WATCH LIST

You can save the lots you're interested in by clicking the "watch" button or on the star icon ★ next to the lot number. By activating "watch" on a lot, you will be notified of any changes or updates.

WINNING BIDDER

When you are the **Winning Bidder**, your bid will be **bold** and **blue** with your Max Bid to the right and **WINNING** displayed over the lot.

JUMP THE BID




Click or tap the **Jump The Bid** button immediately or at anytime to implement your Max Bid as the current bid, displayed to all bidders.

BEING OUTBID

If you are **Outbid**, you will still see your last bid with the new current bid to the right, and **OUTBID** displayed over the image.

If your bid matches the current Max Bid, your bid and the current bid will be the same, but you will still be outbid.

GROUP (25 Lots)

	LOT 1001 Parcel 1: +/-484 acres - Feedlot NW, SW, SE 8-15-7-W2 & NE DESCRIPTION Contact: Ria Braaksma 780-446-3006 Location: Grenfell, SK
WINNING	Bidding CA\$51,000 (Max: CA\$55,000) <input type="button" value="EDIT BID"/> - Or - <input type="button" value="JUMP THE BID"/>
	LOT 1002 Parcel 2: +/-159.83 acres - NW 7-15-7 W2 DESCRIPTION Contact: Ria Braaksma 780-446-3006 Location: Grenfell, SK
OUTBID	You Bid CA\$235,000 <input type="button" value="PLACE BID"/> Current Bid CA\$236,000
	LOT 1003 Parcel 3: +/-159.9 acres - NW 12-15-8 W2 DESCRIPTION Contact: Ria Braaksma 780-446-3006 Location: Grenfell, SK
OUTBID	You Bid CA\$320,000 <input type="button" value="PLACE BID"/> Current Bid CA\$320,000



**QUESTIONS ABOUT OUR AUCTION
PROCESS OR REGISTRATION?**

TEAM AUCTIONS

Sekura Auctions Since 1966

Real Estate Office
587-464-2125

QUESTIONS ABOUT THE PROPERTY?



Norman Ferris
250-565-7998

TEAMACTIONS.COM

This parcel will sell by Unreserved
Online Timed Real Estate Auction

SCAN FOR MORE INFO

