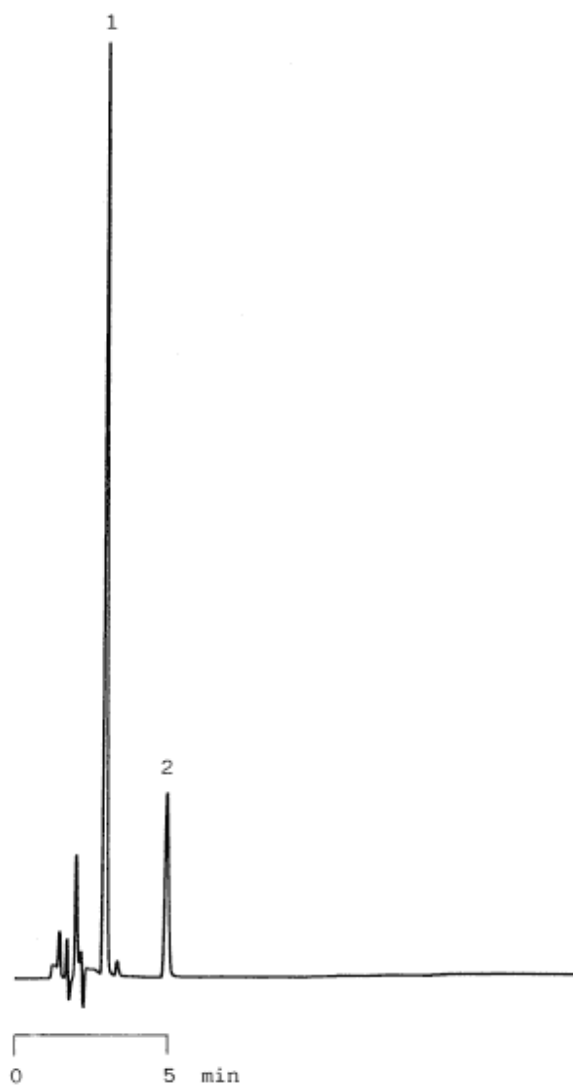


10. Synthetic food dyes in Fish paste

Data No. LA065-0000



Column : Inertsil ODS-2
5 μ m
150 \times 4.6 mm I.D.

Solutes : 1. R-3
2. R-106

Column Cat. No. : 5020-01101

Eluent : CH₃CN/CH₃OH/10 mM (NH₄)₂HPO₄ = 20/25/55

Flow rate : 1.0 mL/min.

Col. Temp. : 50°C

Detection : VIS 530 nm

Injection Vol. :

Sample : Synthetic Food Dyes