

Winchelsea Star

Price \$1



Your Weekly Community Newspaper

Since 1977

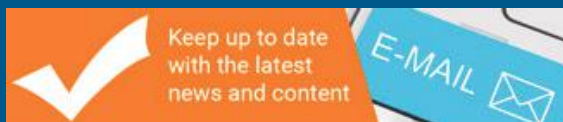
Vol 46 Ed 12

Tuesday 4 April 2023

winchelseastar.org.au

Students from our local dance school,
Mel's Dance Central, at the Colac Kana Festival

Page 3



**SUBSCRIBE AND LET US COME TO YOU,
EVERY EDITION FREE ONLINE**

winchelseastar.org.au

eldersrealestate.com.au

Elders

You're in Safe Hands With Peter Lindeman Delivering Exceptional Results for Over 20 Years

If you're thinking of selling a Rural or Lifestyle acreage property on the Bellarine, the Barwon or beyond then think Peter Lindeman. Peter spent 20 years managing farms before jumping the fence to sell them; and over the last 20 years he's helped clients achieve extraordinary results, more often than not surpassing their expectations. Why not let Peter show you how he can help you achieve an outstanding result for your property.

Peter Lindeman
RURAL AND LIFESTYLE SALES MANAGER – ELDERS GEELONG



P: 0418 525 609 E: peter.lindeman@elders.com.au



WARNOCOORT 12 TRASKS ROAD

★★★★★ **Seller review**

“ The sale of Kelowna was quick, painless and brilliantly handled by Peter Lindeman, from Elders Geelong, and we can't thank him enough. Peter came highly recommended, by a friend, and he certainly lived up to his impressive reputation. He's such a lovely chap. Easy to chat with. Has years of experience. And genuinely cares about his clients and buyers. Plus he turned a load of heritage quinces, from our orchard, into the most delicious jelly and paste. Is there no end to the man's talents! If you think you can't use an Agent from out of town, think again. We did. And we couldn't be happier. Elders are very lucky to have this Geelong Team! ”

★★★★★ **Buyer review**

“ Peter Lindeman was an absolute gentleman throughout the negotiation's for a property I recently purchased in the Western District. It was a difficult few days to get through but Peter was kind caring and honest! What more can you ask for from the agent when purchasing something that means so much to you. I'd like to take this opportunity to thank you sincerely Peter for helping me achieve my dream of owning this property that I have loved and held so dear to me since I was a small boy :-) ”



BARRABOOL 215 ANDERSONS ROAD

★★★★★ **Seller review**

“ Peter was our agent for a farm sale. We had engaged him with other transaction, and as with the others he did not disappoint. He gave us all he had to get us a great result. Having been in a large number of property transactions over the years he is unquestionably the best agent we have had.

We couldn't recommend him highly enough. ”

★★★★★ **Buyer review**

“ We really couldn't say enough about how professional/helpful Peter Lindeman was during and after our search for a property in Victoria. We were very particular what we wanted and where; location is key! Peter Listened to what we wanted never wasted our time showing us properties that didn't fit our needs. Tricky negotiation, but thanks to Peter it all turned out very well. ”

Elders Real Estate, Unit 3/2-6 Rutland Street, Newtown Vic Ph (03) 5225 5000



Students from Mel's Dance Central at the Colac Kana Festival

Melanie Dobrovoljni

On Saturday 18th March, the dance students of our local dance school, Mel's Dance Central attended their first dance event for the year, The Colac Kana Festival.

The students aged from 2 years to late teens performed a 10 minute showcase at The Colac Memorial Square on the day. The Colac Kana was themed

'circus' and the students enjoyed dancing to the array of music that was themed appropriately for the event. With bright colourful costumes and choreography, the students took to the stage and performed a spectacular showcase for the large audience attending.

Following the performance, the students were then involved in the parade which took place down Murray Street, Colac.

The dancers continued to wow the crowd as they also performed down the main street of Colac in the parade, showcasing the choreography they had learnt in preparation for the event.

Mel's Dance Central are still taking enrolments for their Winchelsea dance classes. Further information can be found on their website www.melsdancecentral.com.au.



Winchelsea Community House Inc.

A6247K ABN: 48 932 340 254

- A 28 Hesse Street, Winchelsea, Vic. 3241
- P (03) 5267 2028
- E manager@winchhouse.org.au

Wendy Greaves

Our Term 2 Program will be released in a couple of weeks so stay tuned for what is coming up. In the meantime two new things are now available to register for.

We wish everyone a happy and safe easter. The Community House will be closed on Friday 7th April and Monday 10th April for Easter Public Holidays.

Fermenting Workshop

Saturday 22nd April, 2023
 10am-2pm (approx.)
 Cost \$150 per person (light lunch provided and goodies to take home)
 Winchelsea Shire Hall
 Bookings now open via email to reception@winchhouse.org.au

Winchelsea High Tea

Saturday 13th May, 2023
 2pm-4pm
 Cost \$60 per person
 Winchelsea Shire Hall
 Bookings now open via Eventbrite <https://winchelseahightea.eventbrite.com.au>




CLIMATE EMERGENCY GRANTS

PITCH your PROJECT!

Looking to fund a climate action project?

Tell us your idea by submitting an Expression of Interest, then pitch your project for a community vote! Top projects will each receive \$5,000.

In this 2023 round, Expressions of Interest will be considered for partnership projects between two eligible applicants who will contribute equally to a project to the value of \$10k (with \$5k awarded to each partner to manage).

More information surfcoast.vic.gov.au/grants

Submit your EOI by 7 May, 2023.




holistic health colac


Helping you find permanent relief from chronic physical, mental or emotional conditions

KINESIOLOGY
SPINAL FLOW TECHNIQUE
HYPNOTHERAPY
QUIT SMOKING
REIKI

Karen Wigley

0409 706 727
admin@holistichealthcolac.com.au
www.holistichealthcolac.com.au

WINCHELSEA R.S.L



Winchelsea R.S.L invites you to attend R.S.L clubrooms First Sunday of each Month 1pm - 3pm

To view the extensive records of local service men and women. Items of interest.

R.S.L clubrooms are located in 1914 - 1918 Memorial Grandstand At Winchelsea Football Club Main Entrance




growing Winchelsea
Towards 10,000.

Chiropractic - Remedial Massage - Myotherapy - Sound Healing - Breathwork

Chiropractic care for:

Stress & Anxiety
Body Aches & Tension
Poor Sleep

Pain Management
Family Wellbeing
Health Longevity




03 5267 2240 Shop 4/21 Hesse St Winchelsea   <https://onebodychiropractic.com.au/>



Winchelsea and Moriac locals creating their own community plans

Surf Coast Shire Council is supporting Moriac and Winchelsea locals to develop three-year community plans.

Working groups have been set up in Winchelsea and Moriac with community surveys about to start shortly. Other engagement opportunities will include focus groups and community dinners.

Tony Phelps of the Winchelsea Community Planning Working Group said it was about giving everyone in the community the chance to have their say, picking out the common themes, and putting it all together into a master plan for actioning.

“This is an independent pilot project funded by the Surf Coast Shire but they are completely hands-off. The project will see community members design and participate in a community driven process by exploring what matters locally and what people are motivated to act upon,” he said.

“The final plan is not a list of wants for Council, or anyone, to fund. It’s a plan for locals to make happen whatever is the best way to make happen.”

“The end goal is the Community Plan itself, to be available primarily to local people but also going to Council as a guide for future planning.”

Surf Coast Shire Cr Adrian Schonfelder said it was a true community-led project. “Locals know best what makes their



Winchelsea Community Planning Working Group

township special and what it needs to thrive,” he said.

“We want Moriac and Winchelsea communities to be the driving force behind their community plans and priorities for their towns and the actions that come from this.”

The Deans Marsh and district community were the first in the Surf Coast Shire to develop a community plan in 2019, and now its residents are

seeing the benefits of the community-initiated projects being realised. This includes the Deans Marsh Community Dinner Program, the PowerMaD renewable energy project, local food initiatives and the establishment of the Deans Marsh Streetscapers, who are planning for streetscape improvements.

Find out more and get involved at surfcoast.vic.gov.au/CommunityPlanning.

Winchelsea Probus takes a stroll down country roads

Linda Carter

A small group from Winchelsea Probus went to Morning Melodies at the Sphinx to enjoy lunch and a John Denver tribute.

A very enjoyable show where everyone knew the songs and sang along with the performer. We also bumped in to a group from ADAS who also had the same idea.

Thanks to Don for getting us there and back safely and for the detour along the docks to see the new Tasmanian Ferry terminal and luckily the ferry was in.

A great day out.





We've been heard! Native quail shoot slashed



Victoria's "recreational" native Stubble Quail shoot has been slashed by two months

Regional Victorians OTDS Inc.

In an historic win for our tiny native Stubble Quail, restrictions have been placed on recreational quail shooters for the first time. The shooting season normally runs for three months from the first Saturday in April, before sunrise every day.

This year it will run from April 26, to just May 30, commencing at 8am each day. This will bring some relief to surrounding communities and help in a small way to protect the little birds' numbers.

Regional Victorians Opposed to Duck Shooting Inc. (RVOTDS) has been relentless in our campaign to ban quail shooting. We are grateful to decision makers for hearing us, and for implementing measures to minimise the carnage.

Population Concerns

Our native Stubble Quail numbers have been crashing, according to government harvest data. Arthur Rylah Institute spokespeople/GMA have advised that harvest data is a good indicator of population trends.

The regulator's first-ever "count*" (*recommended further reading) of this little bird early last year found just 101 of them (miraculously extrapolated up to 3.1 million with a high co-efficient of variation, or error indicator, of 29%). This was before unprecedented flooding would have taken an ugly toll on many of those remaining. (Quail are adversely impacted by fire and flood: Frith & Carpenter 1980).

Damage to Farmers' Crops and Victorian Ecosystems

To top things off, inexplicably, it is still legal to use toxic lead ammunition in quail shooting. Lead ammunition was banned from use in duck shooting decades ago (but is still used illegally as is reported most duck shooting seasons.)

According to a Department of Sustainability & Environment report, each ammunition cartridge holds 30-45g of lead. Multiply 30g by the average number of 175,000 shot quail each year in Victoria (Game Management Authority harvest estimates) and one gets a staggering 5 tonnes of lead potentially pumped into Victorian (including food-producing) environments each season - without even adding in the lead deposited by missed shots.



What's in a name?

Council has revised its Place Naming Policy and invites you to comment on the draft.

Council often receives requests for naming of streets, parks, reserves, facilities, and plaques. The policy helps Council make decisions about requests.

The policy now includes reference to plaques and memorials and also reflects Council's commitment to reconciliation and gender equity.

Naming places, features and localities can be an important way to recognise and celebrate Traditional Owners and preserve First Nations languages, and to celebrate diversity.

Tell us your thoughts on the draft policy. Read more about it via surfcoast.vic.gov.au/placenaming and have your say by 7 May.

Winchelsea Primary School Celebrating Harmony Week



David Peel

The week beginning Monday 20th March and finishing Sunday March 26th March was Harmony Week.

This day came about in 1999 at a time when the focus shifted from racism to harmony. It was deemed that the nation could live in harmony as we progress forward as a nation.

Harmony Week is the celebration that recognises our diversity and brings together Australians from all different backgrounds. It's about inclusiveness, respect and a sense of belonging for everyone.

As a school celebrated Harmony Week by creating a flower display. The theme for our display was 'Everyone Belongs' and the orange colours of the flowers recognises the importance of deep

conversations and social communication. Orange is the colour used to represent Harmony Week.

Teachers used this activity as a spring board to initiate conversations about inclusiveness, diversity and belonging, as well as being a fun engaging activity for all.

Next time you visit our school you will be greeted by our amazing display (Pictured).

Lupton BUILDERS

SPECIALISING IN QUALITY

REGISTERED
Building Practitioner

<ul style="list-style-type: none"> • NEW HOMES • ALTERATIONS • GARPORTS • BATHROOMS 	<ul style="list-style-type: none"> • EXTENSIONS • DECKS • VERANDAHS • WINDOW REPLACEMENTS 	<ul style="list-style-type: none"> • RENOVATIONS • PERGOLAS • RE-GLADS
---	---	---

<p style="margin: 0; font-size: small;">LEIGH LUPTON 0438 840 104</p>	<p style="margin: 0; font-size: small;">CHRIS LUPTON 0407 681 514</p>
---	---

LEIGHLUPTON17@GMAIL.COM EST. 1977

NATURAL GAS CONNECTIONS

M. & L DRAYTON
PLUMBING SERVICES

YOUR LOCAL LICENSED

- PLUMBERS (24356)
- GAS FITTERS
- GAS CONVERTERS
- CARBON MONOXIDE TESTING

MARK 0428 520 142

Winchelsea Star

Articles are most welcome and must carry the name and address of the sender.

Weekly deadline is 5pm Friday.

Copy for sports results and weekend events is Sunday 6pm (4pm for hard-copy articles/results left at IGA) unless by prior arrangement.

Copy should be emailed to news@winchelseastar.org.au or left at IGA Supermarket.

The Winchelsea Star reserves the right to edit or not publish any article.

Views expressed are not necessarily those of the Winchelsea Star or its Committee.

500 online subscribers, 250 copies printed for outlets around Winchelsea.

Free subscription to digital version at winchelseastar.org.au

© Winchelsea Star Org. Inc.
All rights reserved.

Winchelsea Star Organisation Inc.
Reg. No. A1479, ABN: 57 207 411 958
winchelseastar.org.au
Po Box 5, Winchelsea, Vic, 3241

Editors:

Cerrie Fogan, Yvonne Stevens
Judy Cameron
editor@winchelseastar.org.au

Advertising:

Sasha Gauntlett and Neil McInnes
advertising@winchelseastar.org.au
0408 102 802

Layout/Sub Editors:

Susan Corby, Charles Corby
Stuart Fountain
production@winchelseastar.org.au

Committee

President: Mick O'Mara
president@winchelseastar.org.au

Treasurer: Cathy Cheadle
treasurer@winchelseastar.org.au

Secretary: Tony Phelps
secretary@winchelseastar.org.au

Committee Members:
Linda Carter

Printer: Mud Group
Website: Winch Websites



VALE Rev Nagi Habib

Helen Rolls

Rev Nagi Habib was the Minister at St Thomas's, Winchelsea, Holy Trinity, Barrabool and St Paul's, Deans Marsh from 2001 to 2005.

We remember and appreciated Nagi's loving and caring ministry among us. Following his retirement in 2005 Nagi and his wife Pam moved to Clunes.

Until recently Nagi often took on long term locum appointments within the Ballarat Diocese, including in 2022 at Dimboola and surrounding parishes.



Sadly Nagi died on March 3rd after a short illness.

Our deepest sympathy is extended to Pam and their son Michael and their grandchildren Tanna and Canon.

WINCHELSEA LIONS CLUB

PAPER RECYCLING

Paper depot rear of
Senior Citizens Rooms
Harding Street
NEWSPAPERS,
MAGAZINES,
PHONE BOOKS WANTED



RAISING FUNDS FOR
OUR TOWN & DISTRICT
5267 2011 or 0408 520 606

Winchelsea Men's Shed



For The Community

51 Hesse Street

Every Wednesday from 9:30am

New members always welcome

For more detail contact:
Ray Atkinson (Co-ordinator)
0407 839 139

or
winchmensed@gmail.com

Need a job done?
Woodworking jobs,
furniture repairs, small jobs.
Drop in and talk to us.

Women's Workshop

Wednesdays 2:00 to 4:30pm.

Learn practical home
maintenance skills.

Learn basic woodworking
design & construction
techniques and hand tool use.

Discuss your ideas/needs with us.

SMS Stuart - 0468 358 282 at the
Winchelsea Men's Shed

email: winchmensed@gmail.com



MARKET dates for 2023

- | | |
|--------------------------|---------------------------|
| 1 st January | 2 nd July |
| 5 th February | 6 th August |
| 5 th March | 3 rd September |
| 2 nd April | 8 th October |
| 7 th May | 5 th November |
| 4 th June | 3 rd December |

Did You Know? The Winchelsea LTC is open

Tony Phelps

The sports hall next to Winchelsea Primary School, otherwise known as the Winchelsea LTC (Leisure Time Centre), is once more available for public use. It was actually completed and handed over to the school to manage just before last Christmas.

Extensive repair work to walls and flooring was a joint operation between the Department of Education under its Schools Building Authority and Surf Coast Shire Council. A heavy duty concrete skirt now surrounds the building to keep out the damp, and the floor has finally been finished inside.

The LTC is a significant asset for Winchelsea, and is available to the public for bookings via the school office. It has a basic kitchen, toilets, change rooms, and audience seating along one side. A modular stage can also be hired and setup if needed.

Back in May 2021, hundreds of Winchelsea residents signed a petition requesting Surf Coast Shire investigate the long delays and repeated failures in getting the floor fixed after it first buckled



in 2017. Our local Councillors and state politician joined in the efforts to get the long-running situation satisfactorily resolved.

This is a great outcome for the local community, and all credit to the Surf Coast Shire staff for pushing through to get it done, and funding their share of the repairs. It's now time for Winchelsea to make the most of this hard-floor

indoor space for all sorts of activities. It's previously housed a Flower & Garden Show, school shows, karate, basketball, discos, film nights, funerals, Neighbourhood Watch presentations, roller derby, and much more.

So if someone you know is looking for a large, indoor, hard-floor space in Winchelsea - be sure to consider the LTC!

**2023
DANCE
ENROLMENTS
NOW OPEN!**

**Winchelsea dance
classes commence
1st February 2023**

REGISTER NOW

www.melsdancecentral.com.au

Pro School Adults
Beginner - Advanced Levels

24-hour cat curfew across Surf Coast Shire

All cats within the Surf Coast Shire will need to be confined to their owner's premises from 30 September 2023, under a 24-hour cat curfew adopted by Council.

By confining registered cats in both urban and rural zones to their owner's premises, the 24-hour curfew is likely to reduce cats' impact on neighbours and their pets, and wildlife.

Councillor Kate Gazzard said the curfew enables Council to promote responsible pet ownership. "During community engagement in 2021, we heard that cats harming wildlife was one of the three biggest concerns from the 734 survey respondents," Cr Gazzard said. "We also heard that 55% of respondents said they would like a 24-hour cat curfew in both rural and urban areas to minimise trespassing by cats and to help protect the native wildlife, particularly birds.

"As a result, the DAMP identified an action to investigate and make recommendations regarding extending the cat confinement order."



Winchelsea Community Facebook pages

What's on in Winchelsea

**FLYERS, LOCAL EVENTS,
SMALL BUSINESS,
PROMOTING WINCHELSEA**

facebook.com/WhatsoninWinchelsea

Winchelsea FREE

FREE ONLY

facebook.com/groups/winchelseafree

Winchelsea Community Information AUSTRALIA

POSITIVE DISCUSSION

facebook.com/
groups/207538644446972

Winchelsea Classifieds 3241

FOR SALE ONLY

facebook.com/
groups/216942861684082

Winchelsea Lost and Found

LOST PETS

facebook.com/
groups/768187693217518

Winchelsea Op Shop

facebook.com/
HospitalAuxiliaryOpShopWinchelsea

Winchelsea Shire Hall (Community Centre)

facebook.com/WinchelseaShireHall

Winchelsea Community House

facebook.com/
winchelseacommunityhouse

Winchelsea Coronavirus Community Support Group

facebook.com/
groups/2676957719207927/

The Green Winchelsea Residents

facebook.com/
groups/515322772623126

Growing Winchelsea Inc

facebook.com/growingwinch

Winchelsea Star

facebook.com/TheWinchelseaStar

Winchelsea Movie Club

facebook.com/winchelseamovies

Winchelsea Community Market

facebook.com/100083362387611

Winchelsea Land and River Care Group

facebook.com/envirowinchelsea/

Upper Barwon Landcare Network

facebook.com/UpperBarwonLandcare

Winchelsea & District Historical Society Inc.

facebook.com/
Winchelseaanddistricthistoricalsociety/

Winchelsea Wildlife Shelter

www.winchelseawildlifeshelter.com/

SCARS - Surf Coast Animal Rescue Service

facebook.com/groups/415211698950674

Winchelsea Gardeners

facebook.com/
groups/779878518703025

Winchelsea & District Historical Society

facebook.com/
Winchelseaanddistricthistoricalsociety/

Winchelsea Repertory Society Inc

facebook.com/winchrep/

Winchelsea Globe Theatre

facebook.com/Winchelsea-Globe-
Theatre-164790897641678

Winchelsea Uniting Church

facebook.com/winchelseaunitingchurch

St Thomas' Anglican Church

facebook.com/StThomasWinchelsea

St John the Baptist Catholic Church

facebook.com/pages/Winchelsea-
Catholic-Church/101775670163180

Winchelsea Mainly Music

facebook.com/
groups/668500343953191/

Winchelsea Health Club

facebook.com/WinchelseaHealthClub

Winchelsea Playgroup 2019

facebook.com/
groups/551663435367031

Winchelsea Girl Guides

www.guidesvic.org.au/

Winchelsea/Modewarre Scouts

facebook.com/1stModewarreScouts

Winchelsea Fire Brigade

facebook.com/winchelseafirebrigade/

Winchelsea SES

facebook.com/groups/WinchSES

Country Women's Association - CWA Winchelsea Branch

facebook.com/pg/CWAWinchelsea/

Winchelsea Bowls Club

facebook.com/Winchelsea-Bowls-
Club-533783333344345/

Winchelsea Blues Cricket Club

facebook.com/groups/8999049476/

Winchelsea Blues FC

facebook.com/WinchelseaFNC/

Mel's Dance Studio

facebook.com/melsdancecentral

Winchelsea Golf Club

facebook.com/winchelseagc/
facebook.com/
groups/1324943804676697

Winchelsea Kyokushin Karate Club

facebook.com/winchelseakyokushin

WYLD Winchelsea Youth Leisure and Drop in

facebook.com/
groups/569737570027065/

Lions Club of Winchelsea

facebook.com/LionsWinchelsea

Winchelsea Probus

facebook.com/893535194971083
10am 1st Mon month at Sen Citz Hall

Deans Marsh Primary School

Harmony Day

Russell Taylor-Shaw

Everyone belongs at Deans Marsh Primary School, and our school's recent celebration of Harmony Day was another way of showcasing this message.

The school celebrated the national day, uniting students, teachers, and parents for a multicultural extravaganza. Students shared stories of their families' multicultural backgrounds.

There was a special food tasting of different traditional foods.

Students and parents joined with Widya Luvtari Dance Troupe to perform a Balinese Kecak dance and Sumatran Padang dance.

Best Harmony Day ever!



A big & loud DMPS thank you to:

- Peter & Sarah Bruchmuller for storytelling & cooking.
- David Rubin De Celis Leal for singing & cooking.
- Jade Frederiksen & Alison Dean for cooking & contributing.
- Mo Ahmat for running activities & cooking.
- Liza Bush & Hayley Bennett for contributing.
- Widya Luvtari Dance Troupe.
- Bu Julienne Welsh our Indonesian teacher who ran the event.
- & All our fabulously inclusive students & staff.

Deans Marsh is a wonderful place with unique nature and wild life. Our school wishes to acknowledge that we are on the traditional lands of the Gadubanud people. We pay our respects to their elders, past, present, and future.

Give your feedback - should place naming policy increase focus on gender equity and Traditional Owners?

Surf Coast Shire Council is seeking public feedback on its place naming policy following amendments which include increasing focus on gender equity and Traditional Owner representation.

Council resolved at its March meeting to endorse the updated policy for public exhibition and comment during April.

The policy now includes a previously accompanying policy for plaques and memorials, and:

- Changes considerations of naming after people, including opting against naming after living people, and discouraging naming after deceased people.
- Encourages consideration of gender equity when initiating and assessing naming proposals.
- Encourages consideration of adopting First Nations language names where appropriate, provided consultation has been undertaken with any relevant Registered Aboriginal Party or Traditional Owner group.

- Streamlines naming approval processes.

The policy applies to the naming of parks, reserves, roads, facilities and features, and all plaques or memorials installed within Surf Coast Shire.

“The place naming and plaques and memorials policies were due for review. It is important that they are updated to provide for a consistent and contemporary approach to our naming approvals process, reflecting our cultural identity and diversity,” Cr Rose Hodge said.

“As part of that we have increased focus on gender equity and Traditional Owners with the hope of easing some imbalances.

“As things stand our town names are four times more likely to be derived from a male rather than a female, roads are three times more likely and parks twice as likely, and we have no information indicating that gender diverse people have been commemorated with a naming at any time.

“Unfortunately we are less certain about names with Traditional Owner origins.

Council has focused on acknowledging Traditional Owners through the naming of community buildings in recent years, including Kurrabee Myaring Community Centre, meaning ‘merry laugh, here in this place’, Wurdi Baierr Stadium, meaning ‘big gathering place’.”

The policy discourages naming after deceased people in recognition that community attitudes and opinions can change over time.

In circumstances where naming after a deceased person or family group is being considered, aspects to be assessed include significance of contribution to community, achievements, history and association with an area and the submission’s alignment with other policy principles.

People can view the policy and provide feedback via surfcoast.vic.gov.au/placenaming.

Feedback will be reviewed before a final policy is presented to Council to consider for adoption

Cheaper regional fares now in effect

The cost of a daily ticket on the entire V/Line regional Victorian network is now capped at the same prices as metropolitan daily fares – currently \$9.20 for a full fare or \$4.60 for a concession. On a weekend or public holiday, daily fares are capped at \$6.70 and currently just \$3.35 for concession.

For those who take long-distance V/Line journeys, the regional fare cap can save people more than \$40 for each and every one-way journey on the regional public transport network.

The cap also applies to interstate travel within 60 kilometres of the Victorian border, as well as Albury, Merimbula, Deniliquin and Mt Gambier, to ensure those living in border communities in New South Wales and South Australia benefit as well. The fare cap applies to all PTV regional buses, town buses and V/Line trains and coaches.

Reinvigorating Cultural Fire

Traditional Owners in the south west are being supported to conduct cultural burning on Country as part of ongoing work towards Aboriginal self-determination.

Gunditj Mirring Traditional Owners Aboriginal Corporation and Eastern Maar Aboriginal Corporation will each receive a grant as part of the Cultural Fire Grants.

State-wide, 10 projects will be funded by the \$6.3 million program, assisting Traditional Owners to conduct cultural burns across the Victorian landscape.

The grant program supports Aboriginal Victorians to care for Country, investing in projects that promote self-determination through land management and enhance cultural and environmental values on Country.

DEECA is investing \$22.5 million over four years to reinvigorate Traditional Owner-led cultural land and fire management practices as part of the

broader Reducing Bushfire Risk funding.

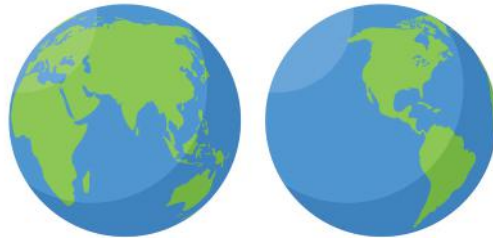
The program contributes to achieving the vision of the Victorian Traditional Owner Cultural Fire Strategy and supports existing partnerships between Traditional Owners and state agencies.

Cultural fire is used by Traditional Owners to heal Country and fulfil their rights and obligations to care for Country.

Before colonisation, cultural burning was used for a wide range of purposes, including protecting Country, providing habitat for wildlife and the harvesting of resources.

Deputy Chief Fire Officer, Andrew Morrow says, “We’re supporting Traditional Owners to lead cultural burning across the region and helping to create a space for traditional land management practices.”

For more information, visit www.environment.vic.gov.au/grants/cultural-fire-grants



The Climate Report

Judy Cameron

The Intergovernmental Panel on Climate Change (IPCC) AR6 Synthesis Report was released recently and, again, contains some very sobering predictions. The report's authors built on more than 14,000 scientific papers to produce a 3,949-page report, which was then approved by 195 governments.

I intend to contribute a weekly report, in 'bite size' pieces, on the latest data and learnings on the state of the climate of our little planet.

So here we go:

Key IPCC Conclusions on Climate Change Impacts and Adaptations

- Impacts of climate change are occurring now.
- Key impacts and the most vulnerable places can now be identified.
- There are very likely to be impacts due to altered frequencies and intensities of extreme weather, climate and sea-level events.

- The report includes a major change from previous IPCC in the ability of scientists to attribute specific extreme weather events.
- The global carbon budget to keep below 1.5 °C is estimated at 500 billion more tonnes of greenhouse gas, which would need the whole world to be net zero before 2050.
- There is a more than 50% chance that global temperature rise will reach or surpass 1.5 °C between now and 2040 across studied scenarios, and under a high-emissions pathway, specifically, the world may hit this threshold even sooner - by 2037
- Cuts to emissions need to be "deep, rapid and sustained" if the world is to limit warming to 1.5 this decade
- If warming goes above that, adaptation will likely be too much for some communities and ecosystems to survive

I am reminded of the words in Monty Python's Galaxy song. These are the first three verses:

Galaxy Song

Whenever life gets you down, Mrs. Brown
 And things seem hard or tough
 And people are stupid, obnoxious or daft
 And you feel that you've had quite enough
 Just remember that you're standing on a planet that's evolving
 And revolving at nine hundred miles an hour
 That's orbiting at nineteen miles a second, so it's reckoned
 A sun that is the source of all our power
 The sun and you and me and all the stars that we can see
 Are moving at a million miles a day
 In an outer spiral arm, at forty thousand miles an hour
 Of the galaxy we call the 'milky way'

(Songwriters: Eric Idle / Trevor Jones)

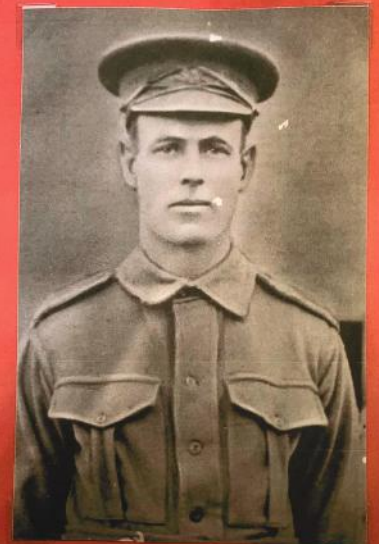
Winchelsea Historical Society

Winchelsea Street Names



Witcombe Street

Leslie Egbert Joshua
 Witcombe died of wounds
 in World War 1.



PRIVATE LESLIE E. J. WITCOMBE

Free Community Service Advertisements

Services and Activities in Winchelsea



TRAIN SERVICES

To Geelong

Mon - Fri

6:41 am, 7:59am, 11:34am,
2:01pm, 7:37pm

Sat and Sun

9:35am, 1:36pm, 7:18pm

To Warrnambool:

Mon - Fri

9:29am, 2:56pm, (to Colac
5:27pm), 6:45pm, 8:53pm

Sat and Sun

8:47am, 2:49pm, 8:37pm

Country Women's Association



7pm Second Wednesday of Month
Winchelsea Senior Citizens' Hall

Bus to the Hub

For reservations on the weekly bus
to the Eastern Reserve Hub,
please phone 52671202.

Surf Coast Mobile Library

Surf Coast Mobile Library
parked in Hesse Street
(outside Shire Hall) on Fridays
between 2:00 and 5:00pm
unless it is a Public Holiday.
Hesse St, Fridays, 2pm-5pm

Winchelsea Taxi

0429 672 888 or 5267 2888

Wheelchair accessible
10 seater bus available.

Winchelsea SES

Meeting and training
2nd Wednesday

Training 4th Wednesday

Visitors and inquiries welcome

0408 102 802

Winchelsea and District Combined Probus Club



Meets 1st Monday of the
month at 10am. Senior
Citizens Rooms, Harding
St, Winchelsea. New
members always
welcome.

Enquiries Linda 0439 817 263.

Body Therapy Classes

Yoga, Pilates, Qi Gung and Mindfulness Meditation Practices

Tuesdays 6.15pm \$13 Cash
Catholic Church Hall -School Term Only

Dr Haidee Benning, 0428 177 964

Winchelsea Playgroup

Every second Thursday 10am-12pm
St Thomas Anglican Church Hall
cnr Barwon Tce and Hopkins St, Winchelsea
Contact: Melissa 0456181268
Facebook - Winchelsea Playgroup 2019
New families welcome

Winchelsea Girl Guides

Our Unit meets at the Catholic Church
Hall, Harding St Winchelsea
each Monday 4.30pm-6pm
All girls 5yrs- 15yrs Welcome!
Contact Yvonne Orchard 0448 672 630
or Bonnie Stokes 0401 386 274

1st Modewarre and Winchelsea Scout Group

Joey's: Tuesdays of school term 5-6pm
Cubs: Mondays of school term 6:30-8pm
Scouts: Tuesdays of school term
6:30-8:30pm

All at Modewarre Hall, Cape Otway Rd
Venturers: Wed at Walton's Rd Venturer Den
Contact Marie McPadden 0409 330147

Winchelsea Transfer Station

Opening Hours

Monday	Closed
Tuesday	2pm-4pm
Wednesday	Closed
Thursday	2pm - 4pm
Friday	Closed
Saturday	1.30pm - 3.30pm
Sunday	9.30am - 12.30pm

55 Cressy Road, Winchelsea.

Accepts household garbage,
mixed commercial and industrial waste,
mixed construction and demolition
waste. Accepts recyclable materials.
Accepts one recycle bin two waste bins.
Does NOT accept clean fill.

What's happening in Winchelsea

Hinterland Art School

Seeking experienced local, male and female figure drawing life models.

Mondays 6.30 - 8.30 Term 2 2023

Winchelsea

Contact: Louise Hall.

e.hinterlandartschool@gmail.com

m.0493 479 447

WINCHELSEA SHIRE HALL

1860

Winchelsea Land and Rivercare

Working bees are back for 2023

First Saturday of the month. 9am – 10.30

April 1, May 6.

Meet at Guye Reserve, Barwon Terrace

This month will be spreading mulch and weeding again.

Winchelsea Hospital Op Shop

Hours Friday to Monday 10am -3pm



NO DONATIONS TIL FURTHER NOTICE

Sale - \$1 per item of selected clothing.

FOR SALE 5 Ewe lambs Black suffolk X

Born July 2022

Also good for the freezer.

Call John on 5288 7255

Painter Wanted Urgently

For small local job picket fence in winchelsea needs to be completed by April 14th

Enquiries: 0405 632 802
Meryl Greig

What is this??
Appearing at the football ground



Blues News

Janet Fletcher

WELCOME TO BLUE'S NEWS

FOOTY'S BACK!

Grass roots football is alive and well with a big crowd at Winchelsea's Eastern Reserve last Saturday to take part in viewing the opening round twilight game against Belmont Lions. The Reserves kicked off at 3.30pm in what was a much better day weather wise than predicted, the rain held off and quite still conditions prevailed. The Canteen kept humming along for both matches and the W.F.N.C. is very grateful to the Lions Club of Winchelsea for not only handling the "Gate" but with assisting with feeding the big crowd with their popular "Chuck Wagon"

RESERVES:

The revamped Reserves side started really well out of the blocks with a blistering 5 goals 1 point to Belmont Lions 1 goal in their opening first quarter of season 2023. The Blues standard of play didn't drop away in the second quarter but their accuracy certainly did kicking 6 points to Belmont's 2 goals straight. The Blues came out firing after the long break at half time and poured on 5 goals 3 points to the Belmont side's 1 goal.

In the fourth quarter it was all Blues as they continued to add 5 goals 1 point and keep the Lions scoreless.

Great work Blues, it's been a long time since the Reserves have had such a dominating win of that nature. Coach Hayden Forssman would have been very

pleased with the opening round outcome.

**Winchelsea Blues 15.11.101
def Belmont Lions 4.0.24**

GOALS:

Aaron Cook 4, Zach Ross 2, Jarrod Winzer 2, Zedaki Copland, Robbie Gleeson, Josh Boreland, Ollie Mahncke, Hayden Wilson, Callum Nankervis, Bailey Forssman all 1 goal.

BEST:

Bailey Forssman, Zach Ross, Shaun Morris, Zedakai Copland, Hayden Wilson, Ollie Mahncke.

SENIORS:

The long awaited start to the season for the new recruits and Coach Christian Shaw had finally arrived and it was Belmont Lions who took the points in the opening quarter, they had certainly come to play. Belmont have had an aggressive recruitment drive and have certainly brought a better brand of football to the table than in previous seasons. So how would the Blues respond to Belmont's dominant first quarter??

The Blues started to claw their way back in the second quarter kicking 4.4 to Belmont's 3.2

Just before the half time break things got a little heated and yellow cards were delivered to players from both sides.

After half time the Blues reappeared to be certainly more focused on their game plan and kicked 4 goals 5 points to the Lion's pressured 6 points. The tide was turning the Blues way and in what was a

fairly tough encounter for the full 4 quarters the home side finally got on top with a 1 goal 5 points to 4 points in the fourth from Belmont to take the first win of the season.

A well earned 4 points for the Winchelsea Blues in their opening round.

**Winchelsea Blues 11.15.81
def Belmont Lions 7.14.56.**

GOALS:

Leigh Ellis 3, Tom Henry 3, Lachie Kendall 2, Brenton Rees, Ed Smith, Tom Stephenson all 1 goal.

BEST:

Lachie Kendall, Tom Henry, Fin Parish, Ed Smith, Tom Stephenson, Brenton Rees.

Round 2 April 15 sees the Blues host Bell Post Hill at Eastern Reserve in another twilight game - the Reserves will start at 3.30 and the Seniors at 5.30pm.

During the twilight games the Junior Netballers were selling raffle tickets for Junior Netball with some lovely Easter prizes donated. Many thanks to everyone who donated so generously.

Lucky winners were :

First prize – Hayley Atkinson, Second Jess Loney, Third Andrew Doyle, and Fourth Meg Royal.

Lovely to see Life Member and Club Historian Shirley Leak out of hospital and back barracking for her beloved Blues last Saturday at Eastern Reserve.

Also President Daniel Greskie, wife Jess, young son Hugh and baby Sid viewed the twilight game for a Blues win.

THE BLUE'S BISTRO:

It was a big night at the Blue's Bistro last Thursday night for our first night back for Thursday night dinners. Thank you to everyone for your patience, this week we will be trying a slightly different way of ordering to see if the process can be made a little smoother.

This week on the Menu we have on offer Chicken Satay, Lasagne, and Seafood Baskets

The Club looks forward to welcoming back the 'Bus to the Hub' programme this week, it will be great to have all our regular patrons and perhaps a few new ones as well.

SAFE AND HAPPY EASTER EVERYONE

GO BLUES!!



**WINCHELSEA
CONCRETING**

• Driveways • Sheds • Decorative Concrete • Raft Slabs

Robert Murphy
☎ 0438 235 237
✉ winchelseaconcreting@outlook.com



AN EASTER JOURNEY

with the

WINCHELSEA COMBINED CHURCHES

Maundy Thursday 6th April

Holy Thursday Mass
St John's Catholic Church – 7pm
 Further details – Marg: Ph: 0418 983 0056

Good Friday 7th April – 10.30am

Way of the Cross Walk by the river
Starting at the Picnic Shelter
 (Below the Swimming Pool)
Concluding with Hot Cross Buns
at St John's Catholic Church
 (If raining, assemble in St John's Catholic Church Hall)
 Further details - Lyn: Ph: 0400 649 652

Easter Vigil Saturday 8th

St John's Catholic Church 6pm

Easter Day Sunday 9th April – Services

Uniting Church 9.30AM
St Thomas Anglican Church 10AM





EASTER BLESSINGS TO ALL

Winchelsea Churches



Winchelsea Uniting Church

Hesse St, Winchelsea 3241
 uca.winchelsea@gmail.com
 0475 777 301
 Services 9.30am Sundays

St John's Catholic Church

Harding St, Winchelsea 3241
 Father Joseph Panackal
 0404598558

St Thomas' Anglican Church

Barwon Tce, Winchelsea
 Rev'd A. Lynne Clarke
 stthomaswac@gmail.com
 0477 672 042

Catholic Easter Ceremonies

HOLY THURSDAY:

St. Johns Winchelsea 7pm

GOOD FRIDAY:

Stations of the Cross Walk St. Mary
 MacKillop Bannockburn 10am,
 Winchelsea 10am

COMMUNION SERVICE:

Friday 7th April St. Mary MacKillop
 Bannockburn 3pm

EASTER VIGIL:

St. Johns Winchelsea Sat 8 April 6pm,
 St. Josephs Meredith Sat 8 April 8pm

EASTER SUNDAY:

St. Brigids Anakie 9am, St. Mary
 MacKillop Bannockburn 11am

SAT/SUN MASS TIMES

St. John Winchelsea
 @ 6pm – April 1,8,15,22,29
 St. Brigid Anakie
 @ 9am – April 2,9,16,30
 St. Joseph Meredith
 @ 9am – April 23
 St. Mary MacKillop Bannockburn
 @ 11am – April 2,9,16,23,30
 Sacred Heart Inverleigh
 @ 4pm – April 16

St Thomas Anglican Church Winchelsea

There will be a short service at 9.30 am on Good Friday 7th April,
 before we join the other two churches in Winch for a Good Friday Walk by the river
 at 10.30 am.

Please join us for joyful worship on Easter Sunday, 9th April, at 10.00 am!

Lynne Clarke

Thought for the Week

Life is an experience God's children
 go through that's made of gladness
 and much sadness.

But we must know both the bitter and sweet
 if we want a good life that is full and
 complete, for each trial we suffer
 and every shed tear.

Just gives us new strength to persevere.

John Bader, Accredited Lay Preacher



All About **Mowers & Chainsaws**
 Repairs to all makes and models of ride on mowers, domestic mowers, pumps, chainsaws, brushcutters and small engines.
 Trading Hours: Mon - Fri 8am - 5pm Saturday 8am - 12 noon
5267 2266 Cnr Princes Hwy & Lennox St Winchelsea
 www.allaboutmowers.com.au
 accounts@allaboutmowers.com.au

FERRIS CDX STIHL BRIGGS & STRATTON VICTA

Simco Plumbing and Gasfitting
 24/7 Emergency service Ph:0400643976

- All General Plumbing and Gasfitting
- Roof and Gutters, Hot Water service changeover
- Split Systems, Air Conditioning and Wood Heaters
- Irrigation, Septic and Treatment plants
- Excavation, Bobcat and Tipper
- Rain water Tank installation
- Renovations and Extensions
- Gas conversions and servicing

Simon McGillivray
 Lic: 109610. Free quotes, Fast and friendly service

Water Delivery
WAZZA'S WATER CARTAGE
 Stainless Tanker Up to 22,000 ltr loads
 Barwon Water Registered
 Domestic & Rural Water Supplies

Call Wazza
 Mob: 0428 877 260
 Email: wazza@wazzas.com.au Web: wazzaswater.com

Scott McDonald
0423 413 829

S.J.R AUTOMOTIVE
 ABN 842 483 846 39
 13 ALSOP DRIVE, WINCHELSEA VIC 3841

SOUTHERN GRAIN STORAGE PTY. LTD.
 AG SUPPLIES FERTILISER GRAIN STORAGE SEED CLEANING
(03) 5267 2351

STS ACCOUNTING GROUP
Your Taxation & Superannuation Specialists.
 Winchelsea
5267 2673
 www.surftax.com.au

DAVIC AG
CONTRACTING AND EARTHMOVING
 For all your harvesting needs
 Mowing, raking, round bailing, paddock prepping, spreading and sowing
 Call Dave on **0417 579 973** Bambra

 **Café La Hoot**
 have you tried 'owl' coffee?
 1 willis st cafelahooot@gmail.com 0407 528 999

Riverlee Winchelsea Artists Collective Exhibition coming

Veronica McDonald

As the whole countryside around us is gearing up for many Art Shows over Easter and the school holidays, the painters of the Riverlee Winchelsea Artists Collective are quietly working away in their studios preparing for their inaugural exhibition on the long weekend in June in the Winchelsea Shire Hall, which we lovingly and hopefully call our community art and cultural space.

Just for interest ... in case you wondered ... a collective of artists is called a "colony".

A further little snippet ... in case you wondered a group of rabbits is also called ... wait for it ... a colony.

Oh dear ... why did I write that !!!

However I digress ... back to the story.

These Women of the Hinterland, predominantly water colour artists, are quietly working to develop their painting skills. Forever searching for ideas and subjects, they are using the countryside and the beauty of nature to stimulate their creativity.

At the invitation by Georgie Thomson of Ingleby Homestead, the Riverlee Watercolour Class, under the tuition of Dee Matheson journeyed to her property to become inspired.

We breathed in the history and the beauty.

Most of the class painted diligently. Some talked, some took photos and some pretended.

Our portfolio of work is growing and we are looking forward to our show.



30 cats and kittens seized after confidential tip-off

RSPCA

RSPCA's Major Investigations Team has just concluded a large-scale law enforcement operation at two properties in the Ballarat region and have seized 30 cats and kittens under warrant that are now safely in the organisation's care.

After receiving a tip-off from a member of the community, RSPCA Inspectors from the Major Investigations Team executed six warrants across two properties this morning under Victoria's Prevention of Cruelty to Animals Act 1986 (POCTAA) and Domestic Animals Act 1994 (DAA). The warrants were

executed as part of an investigation into a suspected illegal kitten rearing and selling operation.

The cats and kittens were found in unsanitary, confined conditions and many did not have access to water.

The sale of animals in public places such as parks, roadsides, and car parks is illegal in Victoria under the Domestic

Animals Act 1994. Dogs and cats must be sold from a registered domestic animal business, a private residence, or a place where an animal sale permit is in place. Offences under the Domestic Animals Act carry a penalty of 164 units for individuals, equating to \$30,326.88.

Offences under the Prevention of Cruelty to Animals Act 1986 carry a penalty of 250 penalty units, equating to \$46,230 or imprisonment for 12 months.

RSPCA Victoria's Inspectorate received 1,922 reports involving cats and kittens in the 2021/22 financial year, with a total of 6,687 cats and kittens involved across these reports.

All reports made to RSPCA Victoria's Major Investigations Team must be lodged via <https://rspcavic.org/tip-off-form> or by calling 9224 2222. Facebook messages and emails through unofficial channels do not constitute an official cruelty report.



MRP Steelworx

@Matthew Partridge C
 ☎0418672634C
 @enrpsteelworx@yahoo.com.au

Welding Service

- Onsite welding
- Farm maintenance
- Farm machinery & equipment repairs
- Cattle & sheep yards
- Custom built trailers
- Supply & install gates

NO MATTER WHAT YOUR PROBLEM, DODDS ELECTRIX CAN DEFUSE THE SITUATION.

RURAL, INDUSTRIAL, COMMERCIAL. DOMESTIC
 PHONE 0438 887 360
 EMAIL: DODDSY@FASTMAIL.FM
 PO BOX 36 BIRREGURRA, VICTORIA 324
 REC: 17520 ABN: 64 581 250 880



5234 6585 0417 385 984
 For all your domestic & stock water.
 Also available for road and civil construction
 Local owned and operated.

OZ TREES NURSERY & TREE PLANTING SERVICES

- Affordable seedlings—over 200 species
 - Complete plantation service—farm forestry, shelter, aesthetics
 - Deep ripping & mound ploughing. Rotary bed forming
 - Our experienced staff will help you select species for your site conditions and needs
- Also available—tree planting tools, milk cartons, plastic tree guards & bamboo stakes



569 Warrowie Rd. Colac
 P: 5233 6280 F: 5233 6393
 E: info@oztrees.com.au
 W: www.oztrees.com.au
 Open Monday—Friday
 9am—4:30pm

Phone OzTrees for professional advice,

TRENCHES & HOLES PTY LTD.



PHILLIP ROBERTSON
 ☎ 0427 672 945
WINCHELSEA

- General Earth Works
- Driveways
- Trencher
- Kanga Loader
- Grader
- Excavator Work (3.5 & 6.5 Tonne)
- Tip Truck
- Rock Breaker
- Post Holes & Shed Footings

A.B.N 74006896898



WINCH WEBSITES
 WEB SOLUTIONS SIMPLIFIED.

WEBSITES

GROW business
 INCREASE reach
 SAVE time



Find out what a website could do for you
winchwebsites.com.au
 04 887766 20

CONCRETER
 Alister Aitken

No job to big or small

- Driveways - Carports - Crossovers - Footpaths - Sheds Slabs - Colored Concrete - Concrete sealing - Exposed Aggregate - & more -

Call or text for a no obligation free quote

Servicing our local Winchelsea & Surrounding Areas

alaitken.aa@gmail.com or Alister - 0411 871 950

A.B.N 47 228 574 460



St Vincent de Paul Society
good works

Covering Meredith, Bannockburn, Anakie, Lethbridge, Inverleigh, Teesdale, Shelford, Elaine and Winchelsea

52219170

Monday - Friday 9am to 2 pm
<http://www.vinnies.org.au>

A caring Catholic organisation offering “a hand up” to all people in need.

COVID-19 Weekly Data

Chief Health Officer Update

There were 5,225 COVID-19 cases reported in Victoria this week, an increase of 17 per cent on the previous week. The average daily number of new cases this week was 746, up from 638 last week.

The seven-day rolling average of patients with COVID in Victorian hospitals is 184. There are currently 185 COVID patients in Victorian hospitals. There are currently 8 COVID patients in intensive care. There are 4 cleared cases in ICU. There are 2 COVID patients on a ventilator. The seven-day rolling average of patients in intensive care in Victorian hospitals is 9. In the past three months, 2,591 COVID

patients were hospitalised in Victoria.

A total of 35 COVID-related deaths were reported to the department in the past week. An average of 5 deaths were reported each day in the past week. This represents a 4.6 per cent decrease when compared to the same period the previous month.

The total number of reported COVID-related deaths in Victoria since the pandemic began is 7,459.

COVID-19 epidemiological summary

Victoria continued to see an increase in Covid cases and hospitalisation this week, recording a 17 per cent increase in Covid cases and a 1 per cent increase in Covid hospitalisations.

This increase in transmission is being driven by the combination of waning immunity and the growth in recent weeks of multiple Omicron sub-variants, particularly XBB.1.5.

The Omicron XBB recombinant strains are the most prevalent in wastewater detections, with XBB.1.5 and XBB.1.9.1 accounting for 42 per cent of detections. Detections of these variants have grown over the past 6 weeks. Additional XBB sub-lineages such as XBB.1.16 have also recently emerged.

XBF now represents 25 per cent of detections, followed by CH.1.1 (11 per cent) and other BA.2.75 sub-lineages (combined 5 per cent). A group of variants at low levels, and those which cannot be classified due to new mutations, make up 17 per cent of detections.


Steps to protect yourself and others

With increasing cases and hospitalisations, now is an important time to take steps to help reduce transmission and the impact on the health system. Now is the perfect time to get your 2023 booster vaccine if you're eligible.

Protecting yourself from getting infected is the best way to protect yourself and the community. If you don't get Covid, you can't spread Covid.


These six steps can help you stay ahead of Covid:

- Wear a mask: a high-quality and well-fitted mask can protect you and others from the virus
- Get your 2023 booster: new bivalent vaccines targeting Omicron variants are available at your GP or local pharmacy. To find out if you're eligible for your next booster, visit the Coronavirus website
- Let fresh air in: open windows and doors when you can, it reduces the spread of the virus
- Get tested: if you have symptoms, take a rapid antigen test
- Stay at home: if you have Covid, you should stay at home for at least five days and until you have no symptoms
- Talk to your doctor: if you are at risk of falling very sick, you may be eligible for COVID medicines

Coming to COPACC these School Holidays... 

On by Circa

Wednesday, 19 April 2023 | 07:00 PM



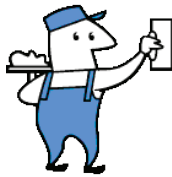
Tickets: Adult \$40
 Concession/Student : \$37
 COPACC Member \$36

Image credit: Pia Johnston

Plasterer & Painter

Daryl Hecker

Domestic & Commercial
Renovations & Repairs
Suspended Ceilings
Dustless Sanding
New Homes
Extensions



Ph 0419 194 799

Antique Repairs

By **Doug Burns** est. 1976

- All Furniture
- French polishing
- Carving
- Veneering
- Wood Turning
- Porcelain



Unusual Requests Welcome

180 Barwon Terrace, Winchelsea

0428 672 704

B & H Modifications Bob Verity



55 Stephenson Road
Winchelsea 3241
Ph: 5267 2467
Mobile: 0411 610 678

Industrial Sewing Machine Work

Caravan Annexes, Trailer Covers,
Shade Sails, Alterations and
Repairs to
Camping and Tents.
Clear PVC Blinds
Repairs to CLEAN Horse Rugs
No Job Too Small
Email: bobverity@southernphone.com.au

Knuckey's Winchelsea

Ph: 5267 2011

Knuckey's have in stock a complete
range of batteries to suit tractor,
heavy machinery, cars, utes

The largest range of the best oil for
your vehicles—**CASTROL**—
'when only the best will do'

The largest range of V belts.
A, B, C, D M Sections
Bolts and nuts for all occasions
Steel cut to size

AFS BOOKKEEPING



*"Your
local
bookkeeper"*

Bookkeeping
Administration
Payroll
BAS Services
Xero / Myob
Reckon / Quickbooks
Registered BAS Agent

Angelique Snetselaar

0456 077 485

info@afsbookkeeping.com.au
www.afsbookkeeping.com.au



52672192 R & K Creative Framing

for all your framing needs
free quotes
pension discount
specialist in Age &
Disability Modifications
Ray & Kim Jansen
10 Witcombe st
Winchelsea 3241
Ray The Home
Maintenance HANDYMAN
abn 47928623462

0414672192



Winchelsea
Supermarket

Trading Hours
Monday to Saturday
8.30am to 7.30pm
Sunday
10am to 7pm

Ph: 5267 2676
29 Main St, Winchelsea



mainly music
est. 1990

Fun, Interactive music sessions for
pre-school children (0-4 y.o.) and
parents/caregivers

When: Mondays from 10 to 11 am
(runs during school terms)

Where: St Thomas' Hall
25 Barwon Tce.

To Enquire ring: **0407838256**

direct TEMPORARY FENCING

FOR HIRE - SUPPLIED & ERECTED - 7 DAYS
GEELONG - BELLARINE - COLAC - SURF COAST
PHONE CAM 0417 310 800

DownRyte Excavations



- Excavations
- Drilling and Piling
- Rock Placement
- Tree and Stump Removal

Sean Hunwick

Mobile: 0409 447 288
Email: downryte@activ8.net.au

Kyeema

Rural Fencing Pty. Ltd.

Jason Armstrong & Jay Hawker

1080 Prices Lane, Ombertley, Victoria, 3241

0419 565085 (Jason)
0416 585817 (Jay)
kyeemafam@kyeemafam.com.au

Also incorporating domestic and rural tree trimming services.



Winchelsea Bowls Club

Kitty 'n Jack

On Sunday 26th of March the Davey Bath Classic/Knuckey Day was held for the first time in the past three years. It was a very successful day with over 60 players of whom a quarter would have been new or inexperienced players. Everyone had a great time and thank you to John and Rob Knuckey for their sponsorship, all workers on the day and everyone who provided a scrumptious and plentiful afternoon tea. The winners of the event were the team of Christine Whelen, Wendy Walters and Peter Marshman.

On Friday the 31st of March the Annual Presentation evening was held in the clubrooms along with nibbles and plentiful pizzas from The Black Pearl. It was a terrific chance to all get together, celebrate the year that has been and enjoy the fellowship of the evening.

Saturday Winter Bowls will commence 29th April at 12 midday. Names to be in by early Saturday morning on sign up sheets.

The Winchelsea Bowls Club will hold its Annual General Meeting on Sunday



John Knuckey, Christine Whelen, Peter Marshman, Wendy Walters, Rob Knuckey

28th of May at 10.30 am. Two course lunch provided after the conclusion of the meeting.

Signing off after a greatly improved season for the club 2022/23 and may the bowls be with you!!

The Torquay Pickleball Club has offered to run a 'come and try' in Winchelsea. If anyone is interested please contact Jill at the Shire Hall. Email: shirehall@winchouse.org.au

What is Pickleball?

Pickleball is a "racquet and ball" sport with a perfect balance of court dimensions, rules, and equipment to afford all skill levels and age groups enjoyment and success on court.

Using a paddle and plastic "wiffle" ball, played on a hard surface indoors or outdoors, the game is a combination of tactical shots, patience, and easy to learn strokes, which encourages an inclusive play environment with no need for modifications or adaptations to cater for gender, ability, or age differences.

Pickleball is both fun and challenging with a combination of long rallies and a blend of soft and rapid-fire shots; where the best athlete must earn their points not purely by athleticism, power, and speed, but also through the use of positioning, patience, tactics, and touch.

Finally pickleball, and the sense of community achieved through pickleball,



provides connections, social, mental, and physical well-being benefits, which are just some of the reasons players are passionately embracing this sport at such a rapid rate both in Australia and globally.

Pickleball in Australia is welcoming, accessible, and safe; striving to be

equitable, diverse and inclusive. The aim of Pickleball Australia is to continue to grow pickleball as a player-centric and values-based sport for all.

The rapid growth of pickleball in Australia resulted in the establishment of the Pickleball Australia Association in 2020.



Speeding? Significant fines apply.

If you speed, you can expect a minimum fine of \$231 and 1 demerit point. Police and speed cameras can be anywhere, so why take the risk?

Chances are you will be caught.

Anywhere. Anytime. Anyone.





Aquafire Healing
HEALING THROUGH NATURE
FELLOW/ATP
2021-2022

**Transforming Your Health
 Through the Healing Power of Nature**

**NATUROPATHIC MEDICINE • HERBAL MEDICINE
 NUTRITIONAL MEDICINE • HOMOEOPATHY
 REMEDIAL MASSAGE**

**www.aquafirehealing.com
 Ph: 0415 530 276**

Moriac Veterinary Clinic
0447 781 089
PHONE 24 HOURS
784 Hendy Main Road Moriac
info@moriacvet.com
www.moriacvetclinic.com.au
HOURS // Monday - Friday: 8am - 5pm

**R.A.K. DAVIS
 & SONS**

**CARTAGE
 CONTRACTORS**

WINCHELSEA

**SUPPLIER OF ALL QUARRY MATERIALS, TRUCK HIRE
 CARTAGE OF GRAIN, LIME, GYPSUM & SUPER
 LANDSCAPE & GARDEN SUPPLIES**

**56 WILLIS ST, WINCHELSEA
 Ph – 5267 2094
 Ryan – 0438 672 281
 Email: rakdavis@bigpond.com**

All your caulking & waterproofing needs

- Bathrooms (tiles, mirrors, vanities, bathtubs, shower)
- Kitchens • Flooring (skirtings, tiles, floorboards)
- Splash Backs • Pool Joints • Brick Work
- Expansion Joints

Phone/Text/Email: luke@westcoastsealants.com

**LUKE BATH
 CAULKING CONTRACTOR**

0406 845 098
 westcoastsealants.com
 PROVIDING QUALITY WORK SINCE 1995

STORAGE KING

SIMPLE STORAGE SOLUTIONS

- Personal & Business Storage
- Boat, Caravan & Vehicle Storage
- High Security Premises
- Individually Alarmed Units
- Electric Gate Access
- 7 Day Access & CCTV

YOUR STORAGE PROBLEMS SOLVED

**5267 3116
 6 ALSOP DRIVE, WINCHELSEA 3241**

HESSE RURAL HEALTH

Volunteers Required

- Bus Driver & Outings Assistant
- Resident Visitor
- Events and Activities Assistant
- Group Wheelchair Walks Assistant
- Appointments Escort
- Social Support Activities
- Gardening - Winchelsea

Volunteers are essential to our aged care system, supporting the wellbeing of older people in their homes and in residential settings

For more information please contact Jessica Culhane, Communications and Community Partnership Officer via phone on **031 5267 1200** or via email jculhane@hesse.vic.gov.au

Funeral Planning
Working out what is best for you.
 Prepaid Funerals, Funeral Bonds, Pay-by instalments...

There are many options and its important to make the right choice.

Alyson Burchell will be available by appointment to answer any questions about funerals and planning ahead.

For more information or to make an appointment contact Sue on 5221 4788

**Tuckers Community Office,
 Surf Coast Taxation Services, 22 Willis Street,
 Winchelsea**

**First Tuesday of the Month,
 by appointment 10.00am - 12.00pm**

Caring for families since 1883

Tuckers
Tuckers & Macmillan Services
...for a life worth celebrating

5221 4788
www.tuckers.com.au



Breeze Health and Wellness, Exercise Physiology
32-34 Main Street, Winchelsea (old post office)
 Chronic disease? Injured? Wanting improved athletic performance?
 We can help you manage, rehabilitate and prevent many common ailments through movement.
 Speak with your GP about a referral for a care plan.
 Private health accepted - no referral needed.
 Call Brenton on 0428 790 023 to discuss or email breezehealthandwellness@gmail.com
 Exercise is Medicine, Motion is Lotion. Move with Ease at Breeze.

Winchelsea AUTO SERVICES
One stop auto shop
17 Alsop Drive

- ❑ LOG BOOK SERVICE
- ❑ AUTO ELECTRICAL
- ❑ TOWING
- ❑ AIR CONDITIONING
- ❑ CLUTCH & BRAKES
- ❑ TYRES
- ❑ WHEEL ALIGNMENT
- ❑ BATTERIES

CAR, TRUCK REPAIRS & Roadworthys

PH: 5267 3001

Mob: 0417 137 457

Pixie Wash
 Mobile Doggie Care
 Dogs up to 20kg
Pixie Heath
 0417 586 080

Located at 36 Main Street, Winchelsea 3241

For any enquires or bookings please contact the clinic on 5292 8028.
 Or visit our website: www.winchmc.com.au

Opening Hours:
 Monday - Friday 8:00am - 5:00pm
 (Monday Evening Clinics available and selected Saturdays)

Our clinic accepts online bookings via the app called HotDoc.
 Download the app on the App Store or Google Play or head to our website.

RONNIE.
 Winchelsea's pet groomer.
 For appointments
0436 008 989
tangopetgrooming@gmail.com

Water Supply Specialists

WATER SOLUTIONS

74 Dennis Street, Colac
 5231 1861

ALL THINGS WATER:

- PUMPS - PIPES
- FITTINGS - TANKS
- POOL CHEMICALS
- IRRIGATION
- WATER PURIFICATION
- SOLAR - REPAIR

GREAT Bundle Deal on Bosch Hot Water... FROM ELGAS

Buy any Bosch Bluetooth continuous flow hot water model - 16Litre, 20Litre or 26Litre and **Receive \$100* in Elgas bonus LPG gas credits**

*For more details: www.elgas.com.au/appliances/bosch-optional-16-20-26-lpg-bundle-sale

AND... for new customers, an additional \$80 WORTH OF LPG GAS CREDITS when you open a new LPG Gas account with Elgas**

**Further details can be viewed at www.elgas.com.au

Ask about the Elgas Easy Payment Plan - 12 months interest free*** on selected LPG appliances

***Further details can be viewed at: www.elgas.com.au/epp

Automatic tanker gas bottle refill OR gas bottle exchange refill is available for home or business...
 Call today or visit our website for our many customer benefits and latest offers

131 161
www.elgas.com.au

- Domestic and Commercial hire equipment • Industrial welding gas
- Digging and Earthmoving equipment • New trailers and trailer repairs
- Firewood • Stockists of Royal Oil Lubricants products
- LPG for domestic and commercial requirements

Give Chris and the Team a call on **5232 1177** or email info@colachire.com.au

www.colachire.com.au

101 Wallace St Colac 3250



Winchelsea Towing

24 Hour Accident and Breakdown Towing

0418 535 402



M & L DRAYTON

PLUMBING SERVICES

REG No 24356 C/A No C02594

- Domestic and Rural Plumbing
- Roofing
- Sewerage & Septic
- LPG & Natural Gas Connections
- Motorised Drain Cleaning
- Backhoe Hire

Phone Mark 5288 7244
PO BOX 98 WINCHELSEA 3241
Mobile 0428 520 142

HF RICHARDSON

PROPERTY

Servicing all your real estate needs
 Ken McDonald **0418 524 150**



Residential | Rural Lifestyle | Agricultural Farms



Charles Stewart & Company are leading livestock and real estate service providers covering Victoria's south west

	LIVESTOCK
Jamie McConachy	0418 522879
Peter McConachy	0408 522878
Matt Nelson	0428 315400
Gerard Bohan	0400 005541
Lachie Barclay	0438 346291
John Thornton	0408 526367
Dougal McIntyre	0439 575612
Ross Spitty	0419 539717
	REAL ESTATE
Michael Stewart	0418 520467
Daryl Osborne	0419 388341
Anthony McDonald	0418 593597
Gerard Bohan	0400 005541
Stephen Lugg	0417 556098
Josh Lamanna	0417 586032



Office
 56 Bromfield Street, Colac
www.charlesstewart.com.au

Green Lead Electrical
 Connecting you to a greener future
REC 23618
0467 097 101



Servicing Geelong & the Surf Coast

Specialising in all residential electrical work including:

- Switch board & lighting upgrades
- Outdoor lighting
- Electrical safety checks
- Energy efficient LED lighting
- Ceiling sweep fans & ventilation
- Energy saving advice

Phone Martin Wilkinson:
0467 097 101
greenlead@outlook.com

132268-CG18-14

MGT BUILDING & CONSTRUCTION

NEW HOMES | EXTENSIONS | RENOVATIONS

Ph: 0409 433 687





YOU'RE INVITED

Happy 20th Birthday Community Bank Surfcoast

To show our appreciation, we are celebrating our 20th birthday by seeking to fulfil the 'wish-lists' of our local not-for-profit groups and organisations by providing an extra \$200,000 back to our community.

When Wednesday 1 February - Sunday 30 April

Contact us via Facebook, in Branch, a Director, or our Community Engagement Advisor -
Kelly 0459 997 102

B Bendigo Bank

Bendigo and Adelaide Bank Limited ABN 11 068 049 178, AFSL/Australian Credit Licence 237879 OUT_28055147, 20/02/2023

Winchelsea Star

Since 1977



Commercial | Industrial | Domestic

HAMILTONS

Truck & Bobcat Hire
Give Aaron a Call
0438 438 623

5234 6585 0417 385 984
For all your septic tank, grease traps and interceptor pits servicing. Locally owned and operated

Winchelsea Taxis is now Surfcoast Taxis

Our fleet of vehicles are growing to all late models and we are covering an extended area including Winchelsea, Colac, Bannockburn, Inverleigh, Great Ocean Road and Geelong.
We have a fleet of 10 seater Maxi Vans, all with capacity to carry wheelchairs.

Surfcoast Taxis Pty Ltd
All Bookings: 0408 325 992
Fax: 5267 2699
Email: bannotaxis@gmail.com
(Admin or Stan 0429 672 888)
66A Batson Street
Winchelsea 3241

Accounts NDIS provider. TAC, DVA etc

NDIS provider number 4050001044
NDIS provider number 4050001048

Book your next ride with **smarHAIL**

Book Track Pay Rate

Download on the App Store GET IT ON Google Play

Wightons Lawyers

Dispute Resolution & Litigation
Debt Collection
Property Law
Wills & Estates
Powers of Attorney
Business Law
Family Law

By appointment only

22 Willis Street, Winchelsea
ph. 5221 8777

www.wightons.com.au