

# Winchelsea Star

Price \$1

Your Weekly Community Newspaper

Since 1977

Vol 46 Ed 40

Tuesday 17 October 2023

[winchelseastar.org.au](http://winchelseastar.org.au)



Meet Leah Nicholls and Jason Nogueira and their daughters Arielle, Aurora and Ailani who live in the Green Estate. Leah graduated with her Masters in Primary School Teaching this year and is the PE teacher at Winchelsea Primary School where the girls go to school. More page 20

# Winchelsea Adventure Play Space

## Final Consultation

Latest updated plans for Winchelsea's Adventure Play Space promise fun times, with elements to stimulate and delight including an accessible flying fox, embankment slide and elevated cubby pods.

Surf Coast Shire Council has released a 3D render showing an aerial view of the layout of the space, which will adjoin and enhance existing play facilities in the gathering space beside the Barwon River.

Council is now seeking community input on final design elements, focusing on materials and colours to be used. "We are delighted to have reached this final planning stage and look forward to seeing the play space taking shape and creating countless new adventures for kids and families," Cr Heather Wellington said.

"Due to various challenges the planning and design process has proven lengthy but we thank Winchelsea community members for their patience and input along the way, right down to the primary school children who shared wishlist ideas for play elements.

"The final product will be welcoming, inclusive, challenging and fun for users and will complement the existing active recreation and play facilities, which will remain"

The Adventure Play Space will include:

- Flying fox with wheelchair access and accessible seat
- Three tree canopy pods with internal access and linked by cargo net bridges
- Embankment slide and climb, with rock climbing holds
- Inclusive spinner
- Log steppers
- Nature play cubby house and sculpture
- Talking tubes connecting bush cubbies
- Timber balancing boards
- Rock scramble.
- 

All existing trees on the site will be retained and protected. The project also includes improvements to accessibility, with ramps between the new adventure play space, existing playground and new gathering space shelter.

Council expects to call tenders for the park construction later this year to early next year, with work expected to be completed between May and July 2024.

Council has welcomed \$250,000 funding for the project from Sport and Recreation Victoria and has liaised with SRV on design.

People can view design options and complete the survey via [surfcoast.vic.gov.au/barwonriverplay](http://surfcoast.vic.gov.au/barwonriverplay) before 31 October.

**PINK IS THE COLOUR  
OF LOVE, OF LIFE,  
OF FUN, OF CARE,  
WE WEAR.**

### YOU'RE INVITED

To help us ensure more families have the care and support of a McGrath Breast Care Nurse.

DATE: Saturday 28th October 2023

TIME: 3 to 5pm

LOCATION: Winchelsea Shire Hall

FOR MORE INFORMATION CONTACT:

Colleen 04 21210401 or Winchelsea IGA



### WINCHELSEA HIGH TEA HELP TO SUPPORT MCGRATH BREAST FOUNDATION

**SATURDAY 28<sup>TH</sup> OCTOBER 2023  
3PM-5PM**

**WINCHELSEA SHIRE HALL**

**COST \$40**

**(INCLUDES A GLASS OF BUBBLES OR ORANGE JUICE,  
SANDWICHES, SAVORIES, PATISSERIES, SCONES, TEA & COFFEE)**



**FOR MORE INFORMATION OR TO PURCHASE  
TICKETS PLEASE RING COLLEEN 042 121 0401 OR  
WINCHELSEA IGA**





## Adventure Play Space

### Layout and elements for Winchelsea's new Adventure Play Space are finalised but community members can help guide some finishing design touches.

A new 3D render gives an aerial view of park components. Community members can view the render via [surfcoast.vic.gov.au/barwonriverplay](https://surfcoast.vic.gov.au/barwonriverplay) and help choose materials and colours to be used in the space. This final consultation remains open until 31 October.

The Adventure Play Space will adjoin and enhance existing play facilities beside the Barwon River, providing an inclusive, fun and challenging environment.

The park will include:

- Flying fox with wheelchair access and accessible seat
- Three tree canopy pods with internal access and linked by cargo net bridges
- Embankment slide and climb, with rock climbing holds

- Inclusive spinner
- Log steppers
- Nature play cubby house and sculpture
- Talking tubes connecting bush cubbies
- Rock scramble

All existing trees on the site will be retained and protected.

Community consultations, including input from Winchelsea Primary School pupils has helped shape the adventure space designs. Sport and Recreation Victoria has contributed \$250,000 to the project and also shared input on design.

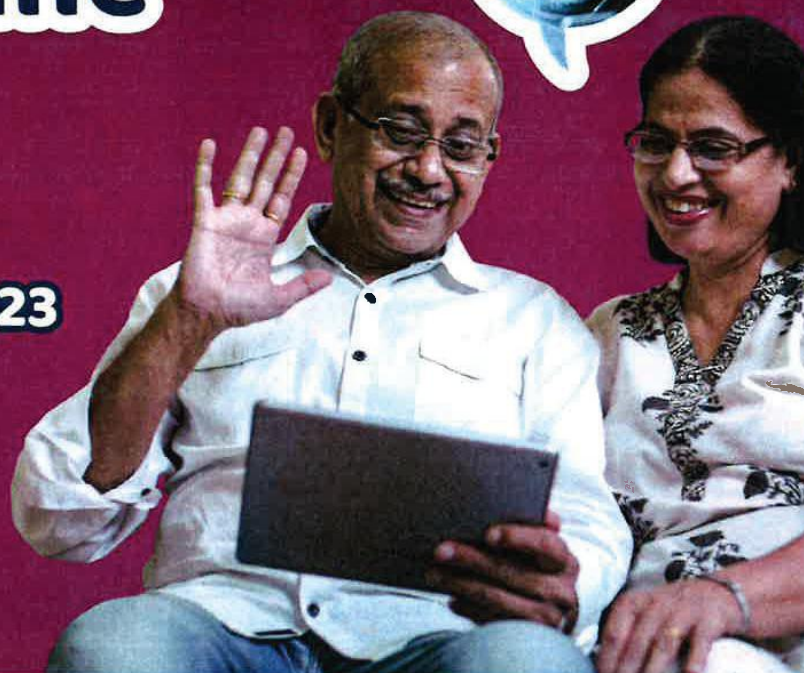
Council expects to call tenders for construction later this year to early next year, with construction expected to be completed between May and July 2024.

[surfcoast.vic.gov.au/winchprojects](https://surfcoast.vic.gov.au/winchprojects)



# Get Online Week

16-22 October 2023



Get **free** and **friendly** help to improve your digital skills and get connected.

Scam Awareness Session

Thursday 19<sup>th</sup> October

10am - 12 noon

Winchelsea Shire Hall

Morning Tea Provided

**FREE SESSION**

Find more Get Online Week events happening this year:

Call **1300 795 897**

or visit [www.getonlineweek.com](http://www.getonlineweek.com)

**#GetOnlineWeek**

a campaign by  
 **Good Things**  
Foundation Australia

 **get  
online  
week**  
16-22 Oct 2023



# Winchelsea Star COMMUNITY NOTICEBOARD FREE ADS

The Winchelsea Star is pleased to print Announcements of local Births, Engagements, Marriages, Birthdays, Anniversaries, Deaths and Funerals. Email [editor@winchelseastar.org.au](mailto:editor@winchelseastar.org.au) or leave at Winchelsea IGA

## SHREDDED PAPER

Winchelsea Lions Club has shredded paper suitable for bedding for pet mice, guinea pigs etc, chicken boxes or worm farms. Available for gold coin donation at the Lions paper shed behind Senior Citizens, Harding St. 0476 475 422.

## FOR SALE 4000 WINCHELSEA COMMUNITY BANK SHARES

RSD Share Registry  
PO Box 30, BENDIGO 3552  
Ph 03 5445 4222  
[shares@rsdregistry.com.au](mailto:shares@rsdregistry.com.au)  
For and on behalf of Bob Verity

## Winchelsea Community Market



Shire Hall  
9am - 1pm

## MARKET DATES

Sunday 5th November  
Sunday 3rd December

## TAKEAWAY CUP CARRIERS

Winchelsea Lions Club has for sale takeaway cup carriers coated with a non toxic finish. They will fit in the side pocket of your car door, at hand and ready for re use.

A one off cost to you  
\$2 for a 2 cup carrier, \$4 for 4.  
Help your local Lions Club raise money for your community.  
Inquiries 0476 475 422.



## Trevor Green 70th Birthday Party

1 - 5pm 22 October 2023  
The Member's Room at The Hub  
Family and Friends Invited  
RSVP 7 October 2023  
0408 520 877 or 0410 165 346



## LIONS BBQ'S

HAVE STARTED AGAIN  
FIRST SATURDAY  
OF THE MONTH  
OUTSIDE IGA  
9AM - 12 NOON  
BUY A SNAG & HELP  
RAISE FUNDS FOR YOUR  
LOCAL COMMUNITY

Would you like to learn more  
about what goes on at your local  
men's shed?

## WINCHELSEA MEN'S SHED OPEN DAY

Tour the shed, wander through the community garden, and chat to Surf Coast Shire Mayor, Cr Liz Pattison.

## WEDNESDAY 18 OCTOBER

51 Hesse Street, Winchelsea

9.30am to 3.30pm - sausage sizzle 11.30am to 2pm.

Open days will also be held at:

- Anglesea and District Men's Shed (17 & 18 October)
- Lorne Men's Shed (17 October)
- Torquay Women's Sharing Shed and Torquay Men's Shed (17 October).

Part of Positive Ageing Month celebrations across the Surf Coast Shire.

[surfcoast.vic.gov.au/PositiveAgeingMonth](http://surfcoast.vic.gov.au/PositiveAgeingMonth)



# Winchelsea Star

## contact us

### NEWS and ARTICLES ARE MOST WELCOME

Include name and address of the sender  
 Email [news@winchelseastar.org.au](mailto:news@winchelseastar.org.au)  
 Leave hard copy at IGA Supermarket

### DEADLINES

#### 5pm Fridays

4pm Sundays - hard copy articles left at IGA  
 6pm Sundays - sports results and weekend events

### FREE DIGITAL SUBSCRIPTION

[winchelseastar.org.au](http://winchelseastar.org.au)

### ADVERTISING

[advertising@winchelseastar.org.au](mailto:advertising@winchelseastar.org.au) 0408 102 802  
 600 online subscribers,  
 250 copies printed for outlets around Winchelsea

## follow us

### ONLINE

[winchelseastar.org.au](http://winchelseastar.org.au)

### FACEBOOK

[facebook.com/TheWinchelseaStar](https://facebook.com/TheWinchelseaStar)

### PRODUCTION

<b>Editors:</b>	Cerrie Fogan, Yvonne Stevens, Judy Cameron
<b>Advertising:</b>	Sasha Gauntlett, Neil McInnes
<b>Design:</b>	Tony Phelps, Susan Corby
<b>Printing:</b>	Winchelsea Community House
<b>Website:</b>	Winch Websites

### COMMITTEE

<b>President:</b>	<a href="mailto:president@winchelseastar.org.au">president@winchelseastar.org.au</a> Mick O'Mara
<b>Treasurer:</b>	<a href="mailto:treasurer@winchelseastar.org.au">treasurer@winchelseastar.org.au</a> Cathy Cheadle
<b>Secretary:</b>	<a href="mailto:secretary@winchelseastar.org.au">secretary@winchelseastar.org.au</a> Tony Phelps
<b>Members:</b>	Linda Carter, Sasha Gauntlett, Neil McInnes, Judy Cameron, Yvonne Stevens, Cerrie Fogan,

© Winchelsea Star Org. Inc. All rights reserved  
 Winchelsea Star Organisation Inc.  
 Reg. No. A0053999F, ABN: 75 941 529 279  
[winchelseastar.org.au](http://winchelseastar.org.au) PO Box 5, Winchelsea, 3241  
 Views expressed are not necessarily those of the  
 Winchelsea Star or its Committee. The Winchelsea  
 Star reserves the right to edit or not publish any article.



## You can write for the Star

We want the Star to inform, engage, inspire, and interest the residents of Winchelsea and surrounds. And we need your writings to get there.

The Star has no actual reporters or designated writers - we publish what you send us. If you have some news, an opinion, an interest or perspective, or a story - we'd love you to send it in for publication.

The Star loves to hear anything of direct interest to the Winchelsea community. The more local content we can put in, the better!

### How much can I write?

You can write just one article. You can start a new column about something you're interested in. You can send us a series of articles on a theme. What would **you** write about?

Your article can spread over 1 or 2 pages (approx 850 words) or you can write longer pieces and split them across multiple editions.

Add a photo or two, an article title and author's name (preferably).

### Can you publish my photos?

A picture is worth a thousand words - but context is very interesting too! If you have a photo you'd like in the Star, add a few words describing where, when, who, why and/or what.

### Ask permission to use photos

When you send us a photo, you give us implied permission for reproduction.

You have liability when publishing an image, so be sure you own the image or have written approval to use it. It is easy for copyright owners to find stolen images online, where the Star can be found.

### Legalities

Our Editors will not approve anything libellous (ie. when a false statement is published in written form and does harm to a victim). The Star is a community newspaper - 'for' and 'against' opinions on contentious topics are welcome, but attacking individuals or groups is not.

We look forward to hearing from you.

Simply email [editor@winchelseastar.org.au](mailto:editor@winchelseastar.org.au)



# Winchelsea Churches



## Winchelsea Uniting Church

Hesse St, Winchelsea 3241  
uca.winchelsea@gmail.com  
0475 777 301  
Services 9.30am Sundays

## St John's Catholic Church

Mass Times - October  
Winchelsea - St. John The Baptist  
@ 6pm Sat. Oct. 7/14/21/28

Mass Times - November  
Winchelsea - St. John the Baptist  
@ 6pm Sat. NOV. 4/11/18

Harding St, Winchelsea 3241  
Father Joseph Panackal  
0404598558

## St Thomas' Anglican Church

Barwon Tce, Winchelsea  
Rev'd Phil Jacobson  
stthomaswac@gmail.com  
0477 672 042

## Thought for the Week

"When everything is quiet and we're lost in meditation, Our souls are than preparing for a deeper dedication that will make it wholly possible to quietly endure the violent world around us, for in God we are secure. And, girded with his knowledge."

**John Bader,**  
Former U/C Accredited Lay Preacher

## Winchelsea Lions visit Port Fairy



Linda Carter

Last week Winchelsea Lions Club took advantage of their free seniors travel and took a day out to Port Fairy.

After a delay of 45 minutes due to a problem on the track at Warrn Ponds we were finally enjoying a relaxing train ride to Warrnambool followed by a bus to Port Fairy.

Unfortunately the weather wasn't the best but we enjoyed a delicious lunch at the Star of the West hotel. Afterwards some explored the town, did some retail therapy or just relaxed.

A lovely day out made all the better by the free transport.



John Hutton, Don Smith, Robbie Clark, Murray Bennett



# Reani Mawson wins Gold in SSA Region Championships

## Angie Mawson

Winchelsea's Reani Mawson is part of the Grovedale College Yr 8 girls 4 x 100m 2023 relay side.

The speedy quartet had previously won their Athletics carnival and then Geelong Secondary Schools Athletics Championship back in term 2. The girls raced well and took out the blue ribbon in the final.

Winning this event sent them to compete in the School Sports Victoria Regional Championships held in Melbourne last Tuesday 10th October.

The experience gained from this competition and event was amazing. The relaxed group were determined to just do the best they could, as they lined up against 7 other schools from all over Victoria.

The young Grovedale College team "ran like the wind" coming away convincing win and a Gold Medal at the end of the competition.

They will now race on Monday night next week at Albert Park in the SSV State Championship against the other top 6 fasted schools to qualify in the state.

Good luck Reani and your team mates and enjoy this exciting experience.



At Victoria Police, you will enjoy a purposeful career making a real difference in your community. With more benefits including a generous starting salary, 9 weeks paid leave, and access to ongoing training and support. Start your career with Victoria Police today.

Authorised by the Victorian Government, 1 Treasury Place, Melbourne



**MADE  
FOR  
MORE**





# Cost is a barrier to healthcare for older Australians

Ian Henschke

New research from National Seniors Australia suggests 68% of older people have recently gone without or hesitated to access essential healthcare because of cost.

The report is based on a survey of nearly 6000 people aged 50 and older.

The survey found only 32% of respondents said cost had not affected their access to health care.

Chief Advocate Mr Ian Henschke said, unsurprisingly, older people with limited wealth have greater barriers to accessing health care. For those who missed out because of cost, almost a third said it had negatively affected their health or wellbeing.

“Most Australians expect to receive lifelong universal healthcare, but it is clearly not the case,” he said.

The survey showed differences in the proportion of older people experiencing cost related barriers according to type of health care being accessed:

- Mental health care, dental treatment and dental checkups were the most likely to be forgone, with 20%-26% of respondents unable to afford them on one or more occasion.
- Prescription medication and GP appointments were the least likely to be skipped because of cost, but even they were unaffordable for 5%-7% of older people.
- On top of these numbers, for every form of healthcare the survey enquired about another 21%-33% of people hesitated over the cost.

National Seniors Australia survey respondents reported various health and wellbeing consequences of going without care including untreated problems, undiagnosed conditions, worsening symptoms and mental health impacts.

Some reported having to wait until their conditions were bad enough to require hospitalisation, with an 81-year-old explaining because he can't afford

minor medical treatment at a GP, he waits until he can be transported to hospital for other more serious incidents.

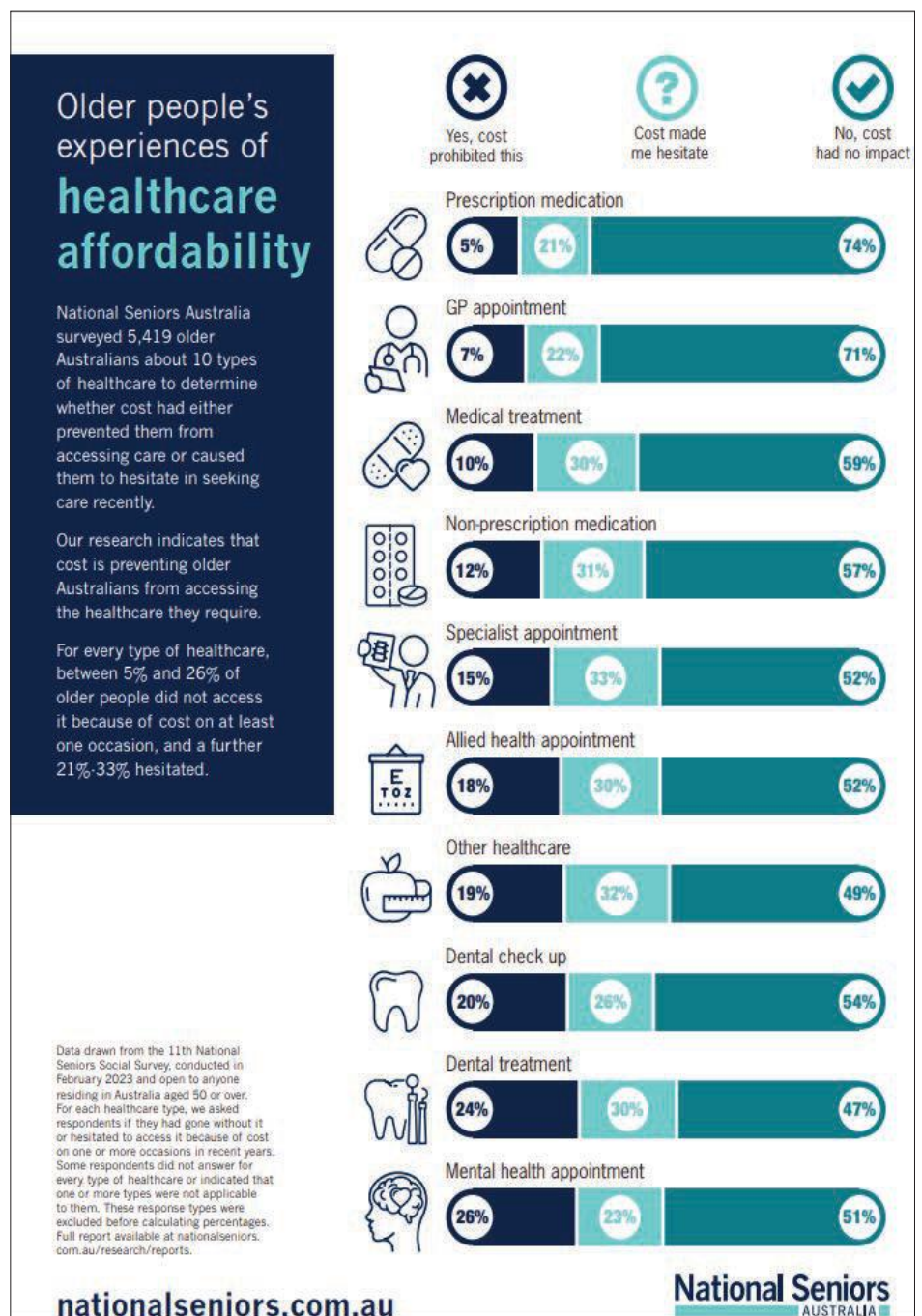
The situation is similar among the 832 respondents who had been on an elective surgery public waiting list, 46% of whom could not afford to pay privately to speed things up.

Many suffered continuing pain, immobility, sensory disablement, mental

health impacts or worsening symptoms while waiting, sometimes to the point of needing emergency care.

“Timely and affordable access to all types of health care helps prevent disability and promotes quality of life for older Australians,” said Mr Henschke.

The report can be downloaded from [2023-NSA-Healthcare-Affordability-and-Accessibility.pdf](https://nationalseniors.com.au/research/reports/2023-NSA-Healthcare-Affordability-and-Accessibility.pdf) ([nationalseniors.com.au](https://nationalseniors.com.au))



# Victoria's duck abundance survey about to begin

The Game Management Authority (GMA) will begin its annual aerial survey of Victoria's game duck population on Monday, 16 October 2023.

The survey will be conducted by experienced wildlife biologists, who will record the presence, species and number of game ducks at more than 870 waterbodies across Victoria, including wetlands, farm dams, sewerage treatment plants, streams and rivers.

Satellite imaging will then be used to determine the amount of wetland habitat available and, together with abundance estimates, will inform an estimate of the total abundance of Victoria's game duck species.

The GMA is continuing this research in 2023, in line with existing government policy, as part of the Victorian Government's Sustainable Hunting Action Plan 2021-24 and commitment to introducing adaptive harvest management.

GMA Chief Executive Officer, Graeme Ford said regularly collecting data is critical to understanding what drives the abundance and productivity of game duck populations.

"Victoria's approach to adaptive harvest management depends on abundance and habitat data being collected consistently and regularly so we can accurately predict future abundance, based on environmental conditions at the time," Mr Ford said.

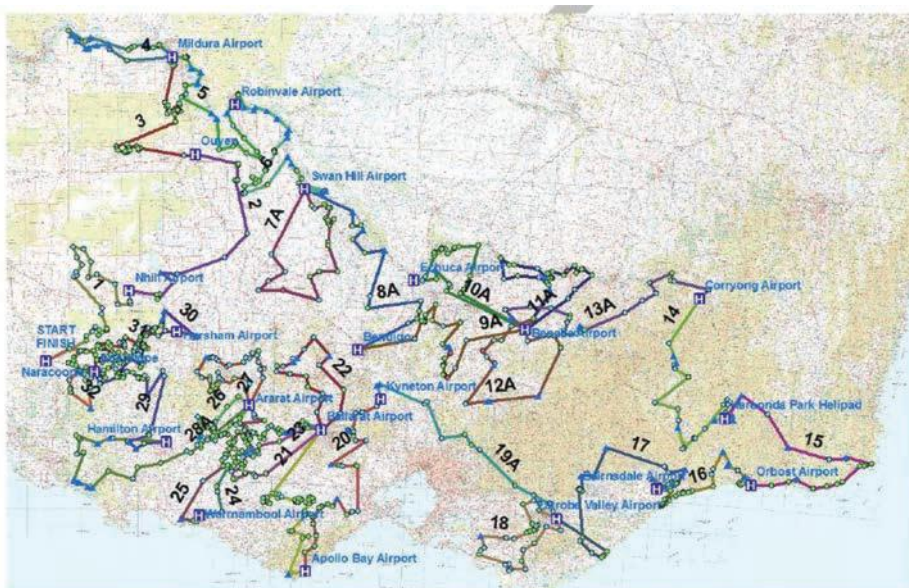
"This research benefits wildlife conservation by increasing our understanding of the ecology of Victoria's game duck populations and the health of their habitats."

The 2023 survey is scheduled to take place from Monday, 16 October – Thursday, 2 November. The flight schedule may change from day to day, depending on weather conditions or other factors.

Residents in surveyed areas may see a helicopter flying at low levels for a short time and for no longer than is necessary. The safety of people and livestock is a priority.

The results of the survey will be published on the GMA website in 2024, following analysis of the survey data.

For more information, visit: [gma.vic.gov.au/research/duck-research](http://gma.vic.gov.au/research/duck-research)



## NOTICE OF AGM

### Winchelsea Community House Inc.

No. A6247K

Notice is hereby given of the Annual General Meeting to be held on Wednesday 18 October, 2023, at 7.00pm in the Shire Hall Building, 28 Hesse St. Winchelsea.

An invitation will be sent to all current 2022 members.

All other interested people are asked to email [manager@winchhouse.org.au](mailto:manager@winchhouse.org.au) so an invitation can be sent.

Membership, which allows attendees to vote, is \$2.00 and payable at the AGM.

#### AGENDA ITEMS INCLUDE:

1. Annual reports from co-ordinators & Committee of Management including annual statement of income and expenditure.
2. Constitution changes to comply with new ACNC requirements. Please contact [manager@winchhouse.org.au](mailto:manager@winchhouse.org.au) to receive a copy.
3. Nominations called from the floor for Chairperson, Treasurer, Secretary/Public Officer as well as five (5) Ordinary Members for the Committee.

The Chairperson will allow any business that is relevant to the Annual General Meeting to be brought forward.

*Tony Phelps, Chairperson*



## WINCHELSEA GOLF CLUB

Ph 5267 2660

Great little country 9 hole golf course run by an enthusiastic team of volunteers.



## Winchelsea Bowls Club

Our Bowling Club has a beautiful garden setting in the heart of the town. For the complete newcomer to lawn bowls, looking for a sporting activity that promises much fun and enjoyment with a competitive element, then the friendly, welcoming atmosphere of our Bowling Club is be

Ph 5267 2241

[Facebook.com/Winchelsea-Bowls-Club-533783333344345/](https://www.facebook.com/Winchelsea-Bowls-Club-533783333344345/)

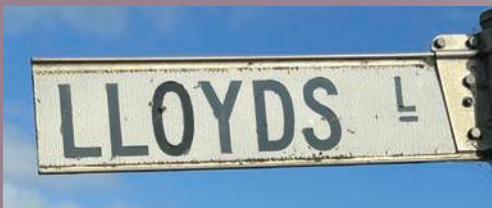
## Winchelsea Historical Society

### Winchelsea Street Names

#### LLOYDS LANE

Lloyds owned property at the end of the lane.

Fred Lloyd was by repute the man who loaded the Duke of Edinburgh's shotguns for him during the famous 1867 rabbit shoot.



#### Norman Phillip LLOYD

##### Enlistment Details:

<b>Service No:</b>	V131146
<b>Stated Age:</b>	23 years
<b>Status:</b>	Single
<b>Occupation:</b>	Hairdresser
<b>Religion:</b>	Church of England
<b>Next of Kin:</b>	Father: A Lloyd
<b>Enlistment Place:</b>	Winchelsea
<b>Enlisted Date:</b>	21.03.1941
<b>Rank:</b>	Gunner
<b>Unit:</b>	77th Mobile Searchlight Batt
<b>Discharge Date:</b>	16.10.1944
<b>Awards and Medals:</b>	1 1939-45 Star 2. Pacific Star 3. Defence Medal 4. Australian Service Medal



##### History

Phil was born on the 29.04.1917 at Winchelsea, the son of Albert and Victoria May Lloyd nee Jennings. The family lived at Buckley, Victoria when Phil was born. They then moved to a farm just off the Lorne Road, Winchelsea in 1918, where Phil grew up. He was educated at the Winchelsea School. When he left school he went to work as a hairdresser. He listed that he lived in Winchelsea when he enlisted.



## Winchelsea Community House and Shire Hall

Hours: Monday-Friday 9.00am -2.00pm

Address: 28 Hesse Street, Winchelsea

Phone: 52672028

[www.winchhouse.org.au](http://www.winchhouse.org.au)

Email: [reception@winchhouse.org.au](mailto:reception@winchhouse.org.au)

### Term 4, 2023

#### **Sound Healing Sessions**

When: Mon 13th Nov, 2023 7.30pm-8.30pm

Winchelsea Shire Hall Space

\$40 per session, Bookings now open

Please call Vicki on 0400 149 749

#### **Chatty Cafe**

When: Friday mornings 10.30am-12 noon

Winchelsea Shire Hall Space

No bookings required

We will have our Chatty Café Volunteers present to welcome you.

Next session Friday 20 Oct

#### **Crochet Group**

When: Alternate Saturday afternoons

1.30pm, Winchelsea Community House Space

\$5 per session

#### **Drop in – Makers' Create**

Where in Winch' can you.....?

Mono print your very own Christmas cards?

Design beautiful, felted Christmas table

place mats and coasters?

Paint? Draw and skill share?

Winchelsea Community House Star Room

Cost \$25 per session

All materials provided.

Bookings : [Hinterlandartschool@gmail.com](mailto:Hinterlandartschool@gmail.com)

PH: 0493 479 447

#### **Knitting Group**

Come along and learn to knit or

bring your knitting project and come

and chat with others.

When: Thursday mornings 10.30am-12 noon

Winchelsea Community House

#### **Get Online Week Event FREE EVENT!**

Scam's Awareness Session

Thursday 19 October, 2023

10am – 12 noon Winchelsea Shire Hall

Morning Tea Provided!

#### **Singing Group**

When: Wednesday afternoons

4.45pm-6.00pm, Winchelsea

Shire Hall Space

8 sessions (4/10 to 22/11/23)

\$60, Con \$50 Under 16 Free.

#### **Responsible Service of Alcohol**

When: Monday 23 October, 2023

6pm-10.15pm Winchelsea Shire Hall

Next session Saturday 21st Oct, 2023

Bookings: [www.liqcon.com.au/goodsports](http://www.liqcon.com.au/goodsports)

password Goodsports, click Winchelsea Session

#### **Painting Classes – All The Basics and More!**

Thursdays 5 Oct-7 Dec, 23 (10 weeks) \$550

A class that progresses through water-based

mediums, with a dual focus on subject matter

and materials.

Try out watercolour pencils, water soluble

graphite, combined with watercolours and

gouache, while revisiting the colour wheel and

colour mixing.

Bookings : [Hinterlandartschool@gmail.com](mailto:Hinterlandartschool@gmail.com)

PH: 0493 479 447

#### **First Aid and CPR (Additional Date!)**

Saturday 11 November, 2023

Please contact Winchelsea Community House

for bookings.

Next session: Thursday 26 October, 2023

Cost CPR Only \$70, Full First Aid \$170

Community Houses such as ours provide programs and activities to learn new skills, brush up on your existing skills and more than anything to connect with others in your community and reduce social isolation. New skills may help you with employment and build your confidence to in turn help others. Activities such as singing and sound healing help your mind and reduce any unwanted stresses. Have a think about doing something for yourself and join in our activities.



## Winchelsea Pram Walks

Explore pram-friendly walking routes in your local area with a member of the Surf Coast Shire Child and Family Health team.

Come along, have a chat, and meet other parents with little ones!

No bookings required, simply show up!

Third Tuesday of the month  
Cafe La Hoot, 1 Willis Street,  
Winchelsea, 3241

**FREE**

Tuesday, 19 September 2023 |  
10:00 AM - 11:00 AM

Tuesday, 17 October 2023 |  
10:00 AM - 11:00 AM

Tuesday, 21 November 2023 |  
10:00 AM - 11:00 AM

Child and Family Health 5261 0549  
childandfamily@surfcoast.vic.gov.au



## National Nutrition Week 2023!

This National Nutrition Week we asked our Dietitian Chantelle for some tips on budget-friendly, nutritious and delicious ways to achieve your daily 5 servings of vegetables.

Choose frozen and tinned vegetables, not just fresh: Frozen and tinned vegetables have a longer shelf-life than fresh and are often cheaper. Frozen vegetables are harvested at peak ripeness and snap-frozen so you are not missing out on quality.

Make at least half of your plate vegetables at lunch and dinner: Eating at least half plate (or 2 cups) vegetables guarantees at least 2 serves of vegetables at a meal to help you get your 5 serves in.

Use cold water to bring vegetables/herbs back to life: Bring limp looking vegetables or herbs back to life by placing them in cold, iced water.

For more tips and tricks on how to get more out of your veg, visit [www.tryfor5.org.au](http://www.tryfor5.org.au)

For specific advice tailored to you, book an appointment with Chantelle today by calling 5267 1200.

## Teddy Bears Picnic!

**Melissa (Mel) Oberin, Winchelsea Playgroup**

On Thursday 5th October Winchelsea Playgroup enjoyed a Teddy Bears Picnic with a very special guest - a GIANT teddy!

Our children had fun playing and wrestling with our giant teddy, as well as painting and colouring teddy-themed pictures, playing little picnics with our other teddies and feeding them lots of yummy toy food. We also had a comfy Teddy Reading Spot with moon-chairs, teddies and lots of teddy-themed books.

Then it was on to a delicious sit-down 'real' picnic with a red-and-black-checked picnic tablecloth, gorgeous fruit platters, yummy teddy-bear cookies, tasty apple and raspberry bars and more.

*Our next Playgroup session is on Thursday 19th October, 10am-12pm for \$5 per family at St Thomas Anglican Church Hall (where Mainly Music is held) - check our Facebook page 'Winchelsea Playgroup 2019' for details.*





# WINCHELSEA FACEBOOK

## Non-profit community Groups and Pages

What's on in Winchelsea	facebook.com/WhatsoninWinchelsea
Winchelsea FREE	facebook.com/groups/winchelseafree
Winchelsea Community Information	facebook.com/groups/207538644446972
Winchelsea Classifieds 3241	facebook.com/groups/216942861684082
Winchelsea Lost and Found	facebook.com/groups/768187693217518
Winchelsea Op Shop	facebook.com/HospitalAuxiliaryOpShopWinchelsea
Winchelsea Shire Hall	facebook.com/WinchelseaShireHall
Winchelsea Community House	facebook.com/winchelseacommunityhouse
Winchelsea Coronavirus Community Support Group	facebook.com/groups/2676957719207927/
The Green Winchelsea Residents	facebook.com/groups/515322772623126
Growing Winchelsea Inc	facebook.com/growingwinch
Winchelsea Star	facebook.com/TheWinchelseaStar
Winchelsea Movie Club	facebook.com/winchelseamovies
Winchelsea Community Market	facebook.com/100083362387611
Winchelsea Land and River Care Group	facebook.com/envirowinchelsea/
Upper Barwon Landcare Network	facebook.com/UpperBarwonLandcare
Winchelsea & District Historical Society Inc	facebook.com/Winchelseaanddistricthistoricalsociety/
Winchelsea Wildlife Shelter	www.winchelseawildlifeshelter.com/
SCARS - Surf Coast Animal Rescue Service	facebook.com/groups/415211698950674
Winchelsea Gardeners	facebook.com/groups/779878518703025
Winchelsea & District Historical Society	facebook.com/Winchelseaanddistricthistoricalsociety/
Winchelsea Repertory Society Inc	facebook.com/winchrep/
Winchelsea Globe Theatre	facebook.com/Winchelsea-Globe-Theatre-164790897641678
Winchelsea Uniting Church	facebook.com/winchelseaunitingchurch
St Thomas' Anglican Church	facebook.com/StThomasWinchelsea
St John the Baptist Catholic Church	facebook.com/pages/Winchelsea-Catholic-Church/101775670163180
Winchelsea Mainly Music	facebook.com/groups/668500343953191/
Winchelsea Health Club	facebook.com/WinchelseaHealthClub
Winchelsea Playgroup 2019	facebook.com/groups/551663435367031
Winchelsea Girl Guides	www.guidesvic.org.au/
Winchelsea/Modewarre Scouts	facebook.com/1stModewarreScouts
Winchelsea Fire Brigade	facebook.com/winchelseafirebrigade/
Winchelsea SES	facebook.com/groups/WinchSES
Country Women's Association - CWA Winchelsea Branch	facebook.com/pg/CWAWinchelsea/
Winchelsea Bowls Club	facebook.com/Winchelsea-Bowls-Club-533783333344345/
Winchelsea Blues Cricket Club	facebook.com/groups/8999049476/
Winchelsea Blues FC	facebook.com/WinchelseaFNC/
WYLD Winchelsea Youth Leisure and Drop in	facebook.com/groups/569737570027065/
Lions Club of Winchelsea	facebook.com/LionsWinchelsea

# Christ Church Birregurra ~ Open Gardens ~ 2023

Saturday 4th November  
Sunday 5th November  
10am – 4pm

~ Enjoy three of Birregurra's Finest Gardens ~

\* Ticket sales at Christ Church only  
(cnr Beal & Sladen Streets)  
\$25 for three Gardens  
(includes tea/coffee)  
\$10 per single Garden

\* Plant stall in Church Grounds

\* Contact Barbara ~ 03 52362655  
~ 0427 568 007

~ Anglican Parish of Colac ~  
[www.anglicancolac.org](http://www.anglicancolac.org)



## Winchelsea Land and Rivercare Working Bee on the River

9am – 10.30 First Saturday of each month

Oct 7 - weeding and tidying.  
Nov 4 – weeding, water watch training

Meet at Guye Reserve, Barwon Terrace  
Bring: gloves, hoe/spade.

Enquiries: Stewart 0428 672054 Rod 0428 549318

This years plantings are looking very healthy  
so any help greatly appreciated.

**Everyone and anyone welcome**

## 50 MARATHONS IN 50 DAYS FOR NICU\*



**Help Tom raise funds to give premature babies the best chance to thrive**

Inspired by sister Zoe and niece Sylvie, Tom will run 50 marathons between 9 December 2023 and 28 January 2024 (50 days) to raise funds to purchase Kangaroo Chairs for families to cuddle their babies and to support life-changing research.

All funds raised will support the Royal Women's Hospital's Newborn Intensive Care Unit. All donations are tax deductible.



# Winchelsea Cricket Club

<winchelseacricketclub1858@outlook.com>



We had a father son duo play for our B-Grade side this week.  
Mathew Tench (dad-left) Jaxon Tench (son-right)

## Winchelsea Cricket Club Dinners

When: Thursday 19th  
October

Where: The Hub - Eastern  
Reserve

Time: Service starts at  
6.30pm







A-Grade team photo - we now wear a coloured kit for one day games. Photo is showcasing the boys in their colours.

## WCC Round 2 Results



**A-Grade** Winchelsea 129 def by Portarlington 8/176

S Murdoch 58 not out	A Korth 3/24
J Stephenson 15	C Watson 2/26
C Watson 15	D Lenehan 1/13
	G Schreurs 1/29
	S Murdoch 1/40

**B-Grade** Winchelsea 6/125 deg by Queenscliff 2/126

M Tench 37	L Lenehan 1/17
R Edwards 31	R Edwards 1/33
LZampatti 15	

Brought to you by



## ROUND THREE

SATURDAY 21ST OCTOBER - 1PM START



**A-GRADE**  
AT COLLENDINA  
RECREATION RESERVE



**VS**



**B-GRADE**  
AT EASTERN RESERVE




# SERVICES AND ACTIVITIES IN WINCHELSEA

## VLINER TRAIN SERVICES

### TO MELBOURNE:

Mon - Fri 6:41 am, 7:57am, 11:14am, 2:08pm, 7:23pm  
Sat - Sun 9:26am, 1:30pm, 7:18pm

### TO WARRNAMBOOL:

Mon - Fri 8:56am, 11:55am, 2:50pm, 5:27pm,  
6:45pm, 8:50pm  
Sat - Sun 8:47am, 2:46pm, 8:34pm



## COUNTRY WOMEN'S ASSOCIATION

7pm second Wednesday of month  
Winchelsea Senior Citizens' Hall



## WINCHELSEA SES

Every Wednesday  
Visitors and inquiries welcome  
0408 102 802



**WINCHELSEA AND DISTRICT  
COMBINED PROBUS CLUB**  
Meets 1st Monday of the month at 10am.  
Senior Citizens Rooms,  
Harding St, Winchelsea.  
New members always welcome.

## WINCHELSEA TRANSFER STATION

**55 Cressy Road, Winchelsea**

Monday	Closed	Tuesday	2pm-4pm
Wednesday	Closed	Thursday	2pm - 4pm
Friday	Closed	Saturday	1.30-3.30pm
Sunday	9.30-12.30pm		

Accepts household garbage, mixed commercial and industrial waste, mixed construction and demolition waste.

Accepts recyclable materials.

Accepts one recycle bin two waste bins.

Does NOT accept clean fill.



## WINCHELSEA GIRL GUIDES

Our Unit meets at the Catholic Church Hall,  
Harding St Winchelsea each Monday 4.30pm-6pm  
All girls 5yrs- 15yrs Welcome!  
Contact Yvonne Orchard 0448 672 630



## 1ST MODDA AND 1ST WINCHELSEA SCOUT GROUP

**Joey's:** Tuesdays of school term 5-6pm  
**Cubs:** Mondays of school term 6:30-8pm  
**Scouts:** Tuesdays of school term 6:30-8:30pm  
All at Modewarre Hall, Cape Otway Rd



## BUS TO THE HUB

For reservations on the weekly bus to the Eastern Reserve Hub, please phone 52671202.

## SURF COAST MOBILE LIBRARY

**Hesse St, Fridays, 2pm-5pm**  
Surf Coast Mobile Library  
parked in Hesse Street (outside Shire Hall)  
Fridays between 2:00 and 5:00pm

## WINCHELSEA TAXI

0429 672 888 or 5267 2888

Wheelchair accessible  
10 seater bus available.

## WINCHELSEA PLAYGROUP

Every second Thursday 10am-12pm  
St Thomas Anglican Church Hall  
cnr Barwon Tce and Hopkins St, Winchelsea  
Contact: Melissa 0456181268  
Facebook - Winchelsea Playgroup 2019



# Letter to the Editor

## What About Us?

Did anyone see The Addy Thursday 5/10/23, page 15? 45 M POOLA STEP CLOSER. Will enhance Torquay's gateway.

Yet we haven't even got started on our upgrade, haven't got the sea at our front door.

We live inland and schools around us bus to Winchelsea to use our pool, which was to benefit Winchelsea and district.

Come on TORQUAY fair go we deserve better. Might as well clean our pool fill it for another year.

**MAKE A NOISE WINCHELSEA PEOPLE LOUD AND CLEAR**

*Concerned Citizen.*

Freepik



A fun new citizen science campaign is underway, encouraging children and families to play their part protecting Victoria's precious environment and agriculture.

Biosecurity Vic Executive Director Katherine Clift said the Great Biosecurity Quest is about protecting what we value by preventing and managing harm by pests and diseases.

'In Victoria, we have a beautiful natural environment and a thriving agriculture industry, and we have a responsibility to protect them,' Dr Clift said. 'Play your part in the Great Biosecurity Quest by joining via the Agriculture Victoria website. You can become a Watchout Warrior by keeping an eye out for potential risks during October and together, we can reduce the threat of diseases and pests in Victoria.'

Participants can download or print Agriculture Victoria's new citizen science toolkit and keep an eye out for some of the state's highest plant and pest risks.

'Grab a magnifying glass, take your toolkit and see what you can find,' Dr Clift said. 'This is a great way for children and families to get outside – whether it be in a backyard, park or garden. If you find an unusual plant, pest or disease you think we should know about, you can report via our website.'

And as well as the benefits of getting out in nature, two lucky Watchout Warriors will take home an iPad Mini – one for answering a citizen science question and the other for naming Agriculture Victoria's new mascot.

The Great Biosecurity Quest runs 9-22 October – learn how to join via the Agriculture Victoria website.

## Renewables powerhouse leads the way at Export Awards

Victorian renewable energy solutions company, Sunpower Renewables – which manufactures state-of-the-art, simple to use and lightweight portable lithium solar generators – won the sustainability and green economy award and was named Victorian Exporter of the Year.

Sunpower Renewables exports its innovative products to a diverse range of markets including the Pacific Islands, Singapore, Thailand, India, Sri Lanka, Bangladesh, the UAE, Saudi Arabia, Lebanon, South Africa, Kenya, North America, Canada, the UK, France and Spain.



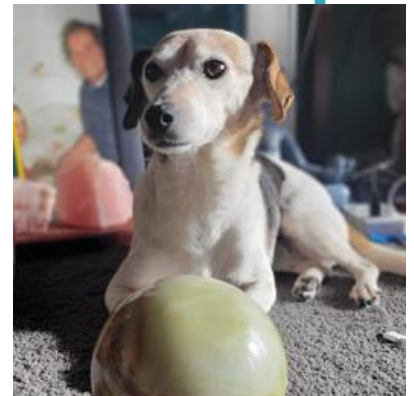
# Know Your Neighbours



Meet Leah Nicholls, Jason Nogueira and their daughters Arielle 10 1/2, Aurora 9 and Ailani 6 who all go to Winchelsea Primary School.

Leah graduated with her Masters in Primary School Teaching at the start of the year and Ms Nicholls is currently the PE teacher at Winchelsea Primary.

Jason is employed at Ford - Research and Development Centre in North Geelong as a Chassis CAE (computer-aided engineering) Engineer working on the design of the Ford Ranger and Everest platform.



The family were living in Berwick and the daily drive to Geelong wasn't ideal and it only made sense to move somewhere closer to work.

Other members of their family are the furry ladies Lily, a 13 year old Jack Russell / Beagle cross and the two cats, Saffron and Jupiter.

Jason says, "We picked Winchelsea as we wanted to build our home and Winchelsea had large blocks on offer at the time at the new Green estate.

We moved from Berwick in March 2020. We have been here a little over 3.5 years and we really love Winch and the community and hope to make it our lifelong home.

The community thrives on social interaction and support, which we hope to give in the coming years as residents. "



## Plan ahead to keep safe from Thunderstorm Asthma

Victorians are reminded to protect themselves and their loved ones from the risk of epidemic thunderstorm asthma by using Victoria's risk forecasting system this grass pollen season.

Grass pollen season, which runs from the start of October until the end of December, brings a seasonal increase in asthma and hay fever – and the chance of thunderstorm asthma.

Epidemic thunderstorm asthma occurs when many people develop asthma symptoms over a short time caused by high amounts of grass pollen and a certain type of thunderstorm.

Victoria's forecasting system, operating from October 1 until 31 December, enables people who have asthma or seasonal hay fever – and are at risk – to plan ahead to reduce their risk.

The forecasting system gives a three-day forecast showing the risk of this type of event, from low (green), moderate (orange) to high (red) risk, across the nine weather districts.

The epidemic thunderstorm asthma risk forecast is available daily through the VicEmergency website and app, and community members can set up a watch zone to receive advice and warnings for their area. It is also on [health.vic.gov.au](http://health.vic.gov.au) and the Melbourne Pollen website and app.

Melbourne experienced the world's largest epidemic thunderstorm asthma event on 21 November 2016, which resulted in 10 deaths and thousands of people developing breathing difficulties in a very short time.

On high-risk forecast days, Victorians with asthma or spring hay fever can reduce their risk by avoiding storms, particularly the wind gusts that come before them. They should go indoors, close windows and doors turn off air conditioners bringing air in from outside.

For more information on thunderstorm asthma and asthma first aid, visit the Better Health Channel.

# Join a Community Service Group



**Landcare**  
Victoria



All your caulking & waterproofing needs  
 • Bathrooms (files, mirrors, vanities, bathtubs, shower)  
 • Kitchens • Flooring (skirtings, files, floorboards)  
 • Splash Backs • Pool Joints • Brick Work  
 • Expansion Joints  
 Phone/Text/Email: luke@westcoastsealants.com



**LUKE BATH**  
CAULKING CONTRACTOR

0406 845 098  
westcoastsealants.com

PROVIDING QUALITY WORK SINCE 1995

**WINCH WEBSITES**  
WEB SOLUTIONS SIMPLIFIED.

## WEBSITES

**GROW** business  
**INCREASE** reach  
**SAVE** time



Find out what a website  
could do for you  
[winchwebsites.com.au](http://winchwebsites.com.au)  
04 887766 20



**STS**  
ACCOUNTING  
GROUP  
**Your Taxation  
&  
Superannuation  
Specialists.**

Winchelsea

**5267 2673**

[www.surftax.com.au](http://www.surftax.com.au)

ventlg0064



**SOUTHERN  
GRAIN STORAGE**  
PTY. LTD.

**AG SUPPLIES FERTILISER GRAIN STORAGE SEED CLEANING**

**(03) 5267 2351**

## Simco Plumbing and Gasfitting

24/7 Emergency service Ph:0400643976

- All General Plumbing and Gasfitting
- Roof and Gutters, Hot Water service changeover
- Split Systems, Air Conditioning and Wood Heaters
- Irrigation, Septic and Treatment plants
- Excavation, Bobcat and Tipper
- Rain water Tank installation
- Renovations and Extensions
- Gas conversions and servicing

Simon McGillivray

Lic:109610. Free quotes, Fast and friendly service

## DAVIC AG

### CONTRACTING AND EARTHMOVING

For all your harvesting needs

Mowing, raking, round bailing, paddock prepping, spreading and sowing

Call Dave on **0417 579 973** Bambra

*mels*  
MEL'S DANCE CENTRAL Est.2011

**Dance**  
**ENROLMENTS**  
**NOW OPEN!**  
**Winchelsea**  
**Dance Classes**  
**REGISTER NOW**

JAZZ - THEATRICAL TAP - HIP-HOP  
CLASSICAL BALLET - CONTEMPORARY  
Pre-School - Adults  
Beginner - Advanced Levels

[www.melsdancecentral.com.au](http://www.melsdancecentral.com.au)

**Kyeema**  
Rural Fencing Pty. Ltd.

Jason Armstrong & Jay Hawker

1080 Prices Lane, Ombersley, Victoria, 3241  
**0419 565085 (Jason)**  
**0416 585817 (Jay)**  
 kyeemafam@kyeemafam.com.au

Also incorporating domestic and rural tree trimming services.

52672192 **R & K Creative Framing**  
for all your framing needs

free quotes pension discount specialist in Age & Disability Modifications

Ray & Kim Jansen  
10 Witcombe st  
Winchelsea 3241  
0414672192

Ray The Home  
Maintenance HANDYMAN  
abn 47928623462

**mainly music**  
est. 1990

Fun, Interactive music sessions for pre-school children (0-4 y.o.) and parents/caregivers

*When: Mondays from 10 to 11 am (runs during school terms)*

*Where: St Thomas' Hall  
25 Barwon Tce.*

To Enquire ring: **0407838256**

All About **Mowers & Chainsaws**

Repairs to all makes and models of ride on mowers, domestic mowers, pumps, chainsaws, brushcutters and small engines.

Trading Hours: Mon - Fri 8am - 5pm Saturday 8am - 12 noon

**5267 2266** Cnr Princes Hwy & Lennox St Winchelsea  
[www.allaboutmowers.com.au](http://www.allaboutmowers.com.au)  
 accounts@allaboutmowers.com.au

FERRIS COX STIHL BRIGGS & STRATTON VICTA

**GUIM DESIGNS**  
**CARPENTRY**

- DECKS - SAUNAS
- FLOORING - PERGOLAS
- WEATHERBOARDS
- HORSE SHEDS
- CLADDING - FENCES

ALL THINGS TIMBER AND MORE...

INSTAGRAM [guim\\_designs](https://www.instagram.com/guim_designs)

CALL PAT ON  
**0401 232 674**

## OZ TREES NURSERY & TREE PLANTING SERVICES

- Affordable seedlings—over 200 species
  - Complete plantation service—farm forestry, shelter, aesthetics
  - Deep ripping & mound ploughing. Rotary bed forming
  - Our experienced staff will help you select species for your site conditions and needs
- Also available—tree planting tools, milk cartons, plastic tree guards & bamboo stakes



569 Warrowie Rd. Colac  
P: 5233 6280 F: 5233 6393  
E: info@oztrees.com.au  
W: www.oztrees.com.au  
Open Monday—Friday  
9am—4:30pm

Phone OzTrees for professional advice,

# MRP Steelworx

Matthew Partridge  
p 0418 672 334  
e mrpsteelworx@yahoo.com.au

### Welding Service

- Onsite welding
- Farm maintenance
- Farm machinery & equipment repairs
- Cattle & sheep yards
- Custom built trailers
- Supply & install gates



5234 6585 0417 385 984  
For all your domestic & stock water.  
Also available for road and civil construction  
Local owned and operated.

Scott McDonald  
0423 413 829



ABN 942 453 848 39  
13 ALSOP DRIVE, WINCHELSEA VIC 3241

## direct TEMPORARY FENCING

FOR HIRE - SUPPLIED & ERECTED - 7 DAYS  
GEELONG - BELLARINE - COLAC - SURF COAST  
PHONE CAM 0417 310 800

### DownRyte Excavations



- Excavations
- Drilling and Piling
- Rock Placement
- Tree and Stump Removal

Sean Hunwick  
Mobile: 0409 447 288  
Email: downryte@activ8.net.au

## CONCRETER

Alister Aitken

### No job to big or small

- Driveways - Carports - Crossovers - Footpaths - Sheds Slabs - Colored Concrete - Concrete sealing - Exposed Aggregate - & more -

Call or text for a no obligation free quote

Servicing our local Winchelsea & Surrounding Areas

alaitken.aa@gmail.com or Alister - 0411 871 950

A.B.N 47 228 574 460

## B & H Modifications

### Bob Verity

55 Stephenson Road  
Winchelsea 3241  
Ph: 5267 2467  
Mobile: 0411 610 678



## Industrial Sewing Machine Work

Caravan Annexes, Trailer Covers,  
Shade Sails, Alterations and  
Repairs to  
Camping and Tents.  
Clear PVC Blinds  
Repairs to CLEAN Horse Rugs  
No Job Too Small  
Email: bobverity@southernphone.com.au

# WINCHELSEA CONCRETING

• Driveways • Sheds • Decorative Concrete • Raft Slabs

Robert Murphy

☎ 0438 235 237

✉ winchelseaconcreting@outlook.com

## Knuckey's Winchelsea

Ph: 5267 2011

Knuckey's have in stock a complete range of batteries to suit tractor, heavy machinery, cars, utes

The largest range of the best oil for your vehicles—**CASTROL**—  
'when only the best will do'

The largest range of V belts.  
A, B, C, D M Sections  
Bolts and nuts for all occasions  
Steel cut to size

**NO MATTER WHAT  
YOUR PROBLEM, DODDS  
ELECTRIX CAN DEFUSE  
THE SITUATION.**

RURAL, INDUSTRIAL, COMMERCIAL DOMESTIC  
PHONE 0438 887 360  
EMAIL: DODDSY@FASTMAIL.FM  
PO BOX 36 BIRREGURRA, VICTORIA 324  
REC: 17520 ABN: 64 581 250 880



**5234 6585 0417 385 984**

*For all your septic tank, grease traps  
and interceptor pits servicing.  
Locally owned and operated*

## Antique Repairs

By **Doug Burns** est. 1976

- All Furniture
- French polishing
- Carving
- Veneering
- Wood Turning
- Porcelain



*Unusual Requests Welcome*

180 Barwon Terrace, Winchelsea

**0428 672 704**



**Winchelsea  
Supermarket**

Trading Hours

**Monday to Saturday**

8.30am to 7.30pm

**Sunday**

10am to 7pm

**Ph: 5267 2676**

29 Main St, Winchelsea

## TRENCHES & HOLES PTY LTD.



**PHILLIP ROBERTSON**

**☎ 0427 672 945**

**WINCHELSEA**

- General Earth Works
- Driveways
- Trencher
- Kanga Loader
- Grader
- Excavator Work (3.5 & 6.5 Tonne)
- Tip Truck
- Rock Breaker
- Post Holes & Shed Footings

A.B.N 74006896898

**M & L DRAYTON**

**PLUMBING SERVICES**

REG No 24356 C/A No C02594

- Domestic and Rural Plumbing
- Roofing
- Sewerage & Septic
- LPG & Natural Gas Connections
- Motorised Drain Cleaning
- Backhoe Hire

**Phone Mark 5288 7244**

PO BOX 98 WINCHELSEA 3241

**Mobile 0428 520 142**

**WAZZA'S  
WATER CARTAGE**

*Stainless Tanker Up to 22,000 ltr loads  
Barwon Water Registered*

**Domestic & Rural Water Supplies**

Call Wazza

Mob: 0428 877 260

Email: wazza@wazzas.com.au Web: wazzaswater.com



**Café La Hoot**

have you tried  
'owl' coffee?

1 willis st [cafelahoot@gmail.com](mailto:cafelahoot@gmail.com) 0407 528 999





Social Workers  
Nurses

Search  **jobs that matter**

Psychologists  
Occupational Therapists

# MAKE A DIFFERENCE WITH A CAREER IN MENTAL HEALTH

**Victoria's mental health and wellbeing system is changing.**

There's never been a better time to join Victoria's public mental health and wellbeing system. There are hundreds of rewarding jobs and career opportunities where you can make a difference to Victorians within a supportive and encouraging environment.

To make a difference to your mental health career, visit  
**[jobsthatmatter.vic.gov.au](https://jobsthatmatter.vic.gov.au)**

Authorised by the Victorian Government, 1 Treasury Place, Melbourne





**Moriac Veterinary Clinic**

**0447 781 089**

**PHONE 24 HOURS**

**784 Hendy Main Road Moriac**

**info@moriacvet.com**

**www.moriacvetclinic.com.au**

**HOURS // Monday - Friday: 8am - 5pm**

**GREAT Bundle Deal on Bosch Hot Water...**

**FROM ELGAS**  
Buy any Bosch Bluetooth continuous flow hot water model - 16Litre, 20Litre or 26Litre and **Receive \$100\* in Elgas bonus LPG gas credits**



\*For more details: www.elgas.com.au/appliances/bosch-aptflow-16-20-26-lpg-bundle-sale

**AND... for new customers, an additional \$80 WORTH OF LPG GAS CREDITS\*\* when you open a new LPG Gas account with Elgas**



\*\*Further details can be viewed at www.elgas.com.au

**Ask about the Elgas Easy Payment Plan - 12 months interest free\*\*\* on selected LPG appliances**

\*\*\*Further details can be viewed at: www.elgas.com.au/epp

**Automatic tanker gas bottle refill OR gas bottle exchange refill is available for home or business...**

Call today or visit our website for our many customer benefits and latest offers

**131 161**  
[www.elgas.com.au](http://www.elgas.com.au)

**ELGAS**



**SIMPLE STORAGE SOLUTIONS**

- Personal & Business Storage
- Boat, Caravan & Vehicle Storage
- High Security Premises
- Individually Alarmed Units
- Electric Gate Access
- 7 Day Access & CCTV

**YOUR STORAGE PROBLEMS SOLVED**

**5267 3116**

**6 ALSOP DRIVE, WINCHELSEA 3241**

**NATURAL GAS CONNECTIONS**

**M. & L DRAYTON PLUMBING SERVICES**

**YOUR LOCAL LICENSED**

- PLUMBERS (24356)
- GAS FITTERS
- GAS CONVERTERS
- CARBON MONOXIDE TESTING

**MARK 0428 520 142**



**MCGREGOR PROJECT SERVICES**

**Winchelsea Local Resident & Business**

**Contact: Cam McGregor**  
Production Tree Nursery

**Ph: 0437 700 754**

**Services offered**

**Production**

- Agricultural/horticultural plantings (natives/exotics) for bulk windbreaks, screenings, driveway features.
- Irrigation - Full service - Commercial/Industrial/Domestic
- Revegetation services - agricultural/roadways/excavation sites/rail/civil
- Drainage Infrastructure - wetlands, matting, fabric
- Consulting
- Maintenance - contract/Ad hoc
- Contract tree/plant growing

Winchelsea  
**Medical Clinic**

**Located at 36 Main Street, Winchelsea 3241**

For any enquires or bookings please contact the clinic on 5292 8028.  
Or visit our website: [www.winchmc.com.au](http://www.winchmc.com.au)

Opening Hours:

Monday - Friday 8:00am - 5.00pm

(Monday Evening Clinics available and selected Saturdays)



Our clinic accepts online bookings via the app called HotDoc.  
Download the app on the App Store or Google Play or head to our website.

- Domestic and Commercial hire equipment
- Industrial welding gas
- Digging and Earthmoving equipment
- New trailers and trailer repairs
- Firewood
- Stockists of Royal Oil Lubricants products
- LPG for domestic and commercial requirements

Give Chris and the Team a call on **5232 1177** or email [info@colachire.com.au](mailto:info@colachire.com.au)

[www.colachire.com.au](http://www.colachire.com.au)

**101 Wallace St Colac 3250**



# MGT BUILDING & CONSTRUCTION

NEW HOMES | EXTENSIONS | RENOVATIONS

Ph: 0409 433 687



WINCHELSEA  
**Osteopathic  
Clinic**

## Special Offer to New Patients

To express gratitude for the community's support, the clinic is extending an offer to new patients.

**Receive \$10 off your initial consultation**

until October 31st by mentioning this article in the Star.

T&Cs for special offer: 1/ Offer only valid for patients who have not previously attended the Winchelsea Osteopathic Clinic or Moksha Project. 2/ Offer redeemable with the following practitioners: Candice, Nick, Andrew, and Jackson. 3/ Not redeemable with any other offer or in conjunction with GP CDM/EPC plans. 4/ Offer ends October 31st, 2023.



- ❑ LOG BOOK SERVICE
- ❑ AUTO ELECTRICAL
- ❑ TOWING
- ❑ AIR CONDITIONING
- ❑ CLUTCH & BRAKES
- ❑ TYRES
- ❑ WHEEL ALIGNMENT
- ❑ BATTERIES

## CAR, TRUCK REPAIRS & Roadworthys

PH: 5267 3001

Mob: 0417 137 457

17 Alsop Drive

**HESSE RURAL HEALTH**

- Acute Care\*
- Urgent Care\*
- Residential Aged Care\*
- Community Nursing
- Dietetics
- Physiotherapy
- Occupational Therapy

- Diabetes Education
- Social Support Groups
- Counselling
- Home Care
- Health Promotion

\* services from Winchelsea only

[www.hesseruralhealth.com.au](http://www.hesseruralhealth.com.au)  
P: (03) 5267 1200 E: [reception@hesse.vic.gov.au](mailto:reception@hesse.vic.gov.au)

# R.A.K. DAVIS & SONS

## CARTAGE CONTRACTORS

WINCHELSEA

SUPPLIER OF ALL QUARRY MATERIALS, TRUCK HIRE

CARTAGE OF GRAIN, LIME, GYPSUM & SUPER

LANDSCAPE & GARDEN SUPPLIES

56 WILLIS ST, WINCHELSEA

Ph – 5267 2094

Ryan – 0438 672 281

Email: [rakdavis@bigpond.com](mailto:rakdavis@bigpond.com)

## Funeral Planning

*Working out what is best for you.*

Prepaid Funerals, Funeral Bonds, Pay-by instalments...

There are many options and its important to make the right choice.

Alyson Burchell will be available by appointment to answer any questions about funerals and planning ahead.



For more information or to make an appointment contact Sue on 5221 4788

Tuckers Community Office,  
Surf Coast Taxation Services, 22 Willis Street,  
Winchelsea

**First Tuesday of the Month,  
by appointment 10.00am - 12.00pm**

Caring for families since 1883

**Tuckers**  
Funeral & Bereavement Service  
...for a life worth celebrating

5221 4788  
[www.tuckers.com.au](http://www.tuckers.com.au)



# Digital Antennas

Have the professional do the job correctly

- Latest Digital Technology
- New Kingray Boosters
- Fully Equipped Mobile Vans With Qualified Technicians stocked with large range of cables & connectors
- TV Brackets
- Digital TV Antennas with: Heavy duty construction
- Durable plastics for harsh Australian conditions
- Manufactured by our team in Geelong



**WE SERVICE THE BELLARINE,  
THE SURFCOAST AND GEELONG**

**SALES &  
INSTALLATIONS**

**Hi-Gain Antennas P/L**  
**1/21 Leather St, Breakwater**  
**Ph: 5222 2711**

**Monday – Thursday 7.30am – 4.30pm**  
**Friday 6.30am – 10.30am**





## Water Supply Specialists

WATER SOLUTIONS

74 Dennis Street, Colac  
5231 1861



ALL THINGS WATER:

- PUMPS - PIPES
- FITTINGS - TANKS
- POOL CHEMICALS
- IRRIGATION
- WATER PURIFICATION
- SOLAR - REPAIR

# HESSE RURAL HEALTH



## Volunteers Required

Volunteers are one of Hesse's greatest assets, playing a vital role to enhance the quality of Hesse services & client experiences.

- Bus Driver
- Outings Assistant
- Resident Visitor
- Events & Activities Assistant
- Group Wheelchair Walkers
- Appointment Escort
- Social Support Activities
- Gardening - Winchelsea
- Hospital Auxiliary Member
- Consumer Advisory Committee
- Marketing & Fundraising Committee

For more information please contact Hesse on  
(03) 5267 1200 or via email [reception@hesse.vic.gov.au](mailto:reception@hesse.vic.gov.au)

## Winchelsea Men's Shed



**For The Community**  
**Men's Shed Kindling/Offcuts**  
 Bags of Kindling/timber offcuts are available for pick up from the Men's Shed on Wednesday's from 9.30 to 2.30.  
 If you need a delivery made you can call Bill on 0438 083 373.  
 The price for a bag of kindling is now \$7.00 (up from \$5.00).  
**Nesting Boxes**  
 Bird or animal nesting boxes are available from The Men's Shed. These can be made to order.  
 Call in on any Wednesday to have a chat.

## Winchelsea Taxis is now Surfcoast Taxis

Our fleet of vehicles are growing to all late models and we are covering an extended area including Winchelsea, Colac, Bannockburn, Inverleigh, Great Ocean Road and Geelong.  
 We have a fleet of 10 seater Maxi Vans, all with capacity to carry wheelchairs.

**Surfcoast Taxis Pty Ltd**  
**All Bookings: 0408 325 992**  
**Fax: 5267 2699**  
**Email: [bannotaxis@gmail.com](mailto:bannotaxis@gmail.com)**  
 (Admin or Stan 0429 672 888)  
 66A Batson Street  
 Winchelsea 3241



Accounts NDIS provider. TAC, DVA etc  
 NDIS provider number 4050001044  
 NDIS provider number 4050001048

Book your next ride with **smarHAIL**



Book Track Pay Rate

Download on the App Store | GET IT ON Google Play

## Wightons Lawyers

Dispute Resolution & Litigation  
 Debt Collection  
 Property Law  
 Wills & Estates  
 Powers of Attorney  
 Business Law  
 Family Law  
 By appointment only

22 Willis Street, Winchelsea  
 ph. 5221 8777

[www.wightons.com.au](http://www.wightons.com.au)



Mental Health Support/Coaching  
 Phone Tanya on 0490 340 076  
[www.awakenlifecoaching.com.au](http://www.awakenlifecoaching.com.au)



# 'Reliable equipment matters to me.'

Need new equipment to keep your business growing? Or is your old equipment running out of steam? If so, it's time to talk with a business specialist.

If reliable equipment matters to you, call Julie on 04 6621 7889 or search 'Bendigo Bank Equipment Finance'.

Community Bank · Winchelsea & District 5267 3189

**Bendigo Bank**

Terms, conditions, fees, charges and lending criteria apply. Bendigo and Adelaide Bank Limited, ABN 11 068 049 178 AFSL / Australian Credit Licence 237879. (1678614-1720176) (03/22) OUT\_31643351, 13/09/2023

**M&B WOOD PLUMBING**  
 Call Matt - 0418 319 357  
[mbwoodplumbing.au](http://mbwoodplumbing.au)

**Servicing Winchelsea & surrounds**

- General maintenance & blocked drains
- Gas fitting & hot water service upgrades
- New homes & renovations

## WINCHELSEA LIONS CLUB PAPER RECYCLING

Paper depot rear of Senior Citizens Rooms  
 Harding Street  
 NEWSPAPERS,  
 MAGAZINES,  
 PHONE BOOKS WANTED



RAISING FUNDS FOR  
 OUR TOWN & DISTRICT  
 5267 2011 or 0408 520 606

Commercial | Industrial | Domestic

**HAMILTONS**  
 Truck & Bobcat Hire  
 Give Aaron a Call  
**0438 438 623**

### Winchelsea Men's Shed



For The Community

51 Hesse Street

Every Wednesday from 9:30am

New members always welcome

For more detail contact:  
 Ray Atkinson (Co-ordinator)  
 0407 839 139

or  
[winchmensed@gmail.com](mailto:winchmensed@gmail.com)

Need a job done?  
 Woodworking jobs,  
 furniture repairs, small jobs.  
 Drop in and talk to us.

**Pixie Wash**  
 Mobile Doggie Care  
 Dogs up to 20kg  
**Pixie Heath**  
 0417 586 080



# Lupton BUILDERS

SPECIALISING IN QUALITY



REGISTERED Building Practitioner

- NEW HOMES
- ALTERATIONS
- CARPORTS
- BATHROOMS
- EXTENSIONS
- DECKS
- VERANDAHS
- WINDOW REPLACEMENTS
- RENOVATIONS
- PERGOLAS
- RE-GLADS

LEIGH LUPTON  
0438 840 104

CHRIS LUPTON  
0407 681 514

LEIGHLUPTON17@GMAIL.COM

Est. 1977

# BLUES

WINCHELSEA F.N.C.



Chiropractic - Remedial Massage - Myotherapy - Sound Healing - Breathwork

## Chiropractic care for:

- Stress & Anxiety
- Body Aches & Tension
- Poor Sleep
- Pain Management
- Family Wellbeing
- Health Longevity



03 5267 2240 Shop 4/21 Hesse St Winchelsea



<https://onebodychiropractic.com.au/>



## HF RICHARDSON

PROPERTY

Servicing all your real estate needs

Ken McDonald **0418 524 150**



Residential | Rural Lifestyle | Agricultural Farms



Charles Stewart & Company are leading livestock and real estate service providers covering Victoria's south west

	LIVESTOCK
Jamie McConachy	0418 522879
Peter McConachy	0408 522878
Matt Nelson	0428 315400
Gerard Bohan	0400 005541
Lachie Barclay	0438 346291
John Thornton	0408 526367
Dougal McIntyre	0439 575612
Ross Spitty	0419 539717

	REAL ESTATE
Michael Stewart	0418 520467
Daryl Osborne	0419 388341
Anthony McDonald	0418 593597
Gerard Bohan	0400 005541
Stephen Lugg	0417 556098
Josh Lamanna	0417 586032



Office  
56 Bromfield Street, Colac  
[www.charlesstewart.com.au](http://www.charlesstewart.com.au)

## Green Lead Electrical

Connecting you to a greener future  
REC 23918

0467 097 101



## Servicing Geelong & the Surf Coast

Specialising in all residential electrical work including:

- Switch board & lighting upgrades
- Outdoor lighting
- Electrical safety checks
- Energy efficient LED lighting
- Ceiling sweep fans & ventilation
- Energy saving advice

Phone Martin Wilkinson:

**0467 097 101**

[greenlead@outlook.com](mailto:greenlead@outlook.com)

1132268-CG18-14





Winchelsea Football & Netball Club Inc.

## NOTICE OF 2023 ANNUAL GENERAL MEETING 12 November 2023

Winchelsea Football & Netball Club Inc: A0042798Y  
70 Hopkins Street, Winchelsea 3241.  
Post Office Box 56. Winchelsea 3241.  
www.winchelseafnc.vcfl.com.au

Affiliated with the Geelong & District Football League

The ANNUAL GENERAL MEETING WILL BE HELD ON  
SUNDAY 12 NOVEMBER at 11am Members Room, Eastern  
Reserve.

All positions have been declared vacant: President,  
Vice Presidents (2), Secretary, Treasurer and General  
Committee. New nominations will be presented.

If you wish to nominate, please fill out a Nomination Form  
(available from the Foxes Den Cafe, and /or Janet Fletcher  
0400 783 408) and send to the Secretary, PO Box 56,  
Winchelsea PO, or e-mail winchelseafnc@hotmail.com

Nomination forms must be received fourteen (14) days  
prior to the A.G.M. ie: 29 October 2023. Nomination forms  
must have the signature of the Nominee, a Nominator  
and a Secunder.

Nominations will be displayed on the Club's website/facebook  
page 7 days prior to the A.G.M.

Please consider becoming a volunteer for the W.F.N.C. and  
help guide the Club throughout what will be an exciting 2024  
Football and Netball season.

GO BLUES!

### WINCHELSEA FOOTBALL & NETBALL CLUB INC. COMMITTEE NOMINATION FORM

I \_\_\_\_\_ hereby nominate  
for the incoming Committee of Management for W.F.N.C. Inc.  
FOR THE SEASON OF 2023/24, as (please tick position)

Nominee's Signature: \_\_\_\_\_

PRESIDENT	<input type="checkbox"/>	SECRETARY	<input type="checkbox"/>
VICE PRESIDENT	<input type="checkbox"/>	VICE PRESIDENT	<input type="checkbox"/>
TREASURER	<input type="checkbox"/>	COMMITTEE MEMBER	<input type="checkbox"/>

NOMINATED BY \_\_\_\_\_

SIGNED BY \_\_\_\_\_

SECONDED BY \_\_\_\_\_

SIGNED BY \_\_\_\_\_



Growing Winchelsea Membership

## 2023 Annual General Meeting AGM 2 November 2023

Dear Members

This correspondence serves as notice for the upcoming  
2022-2023 Annual General Meeting (AGM)

The AGM will be held as per the below schedule

Date	Thursday 2 November 2023
Time	7:00pm - 9:00pm
Location	Winchelsea Shire Hall 28 Hesse Street Winchelsea VIC 3241

All positions will be declared vacant  
with the following positions open for nomination

- President
- Vice President
- Treasurer
- Secretary
- Committee members



Subcommittee reports will be tabled  
for each of the following subcommittees

- Arboretum
- Barwon Park
- Market
- Planning and Infrastructure

Members are encouraged to attend with light supper provided.

All queries are to be directed to  
secretary@growingwinchelsea.com.au

Kind regards, John Tebbutt, President, Growing Winchelsea

### NOMINATION FORM

2023-2024 Executive or Committee Member

I wish to nominate .....

For the position of .....

Nominated by .....

Signature of Nominator .....

Date .....

I am a current member of Growing Winchelsea Inc.  
and agree to be nominated for the above position.

Signature of Nominee .....

Date .....

Nomination forms are to be forwarded to  
the GW Secretary prior to the election of office bearers.  
secretary@growingwinchelsea.com

