

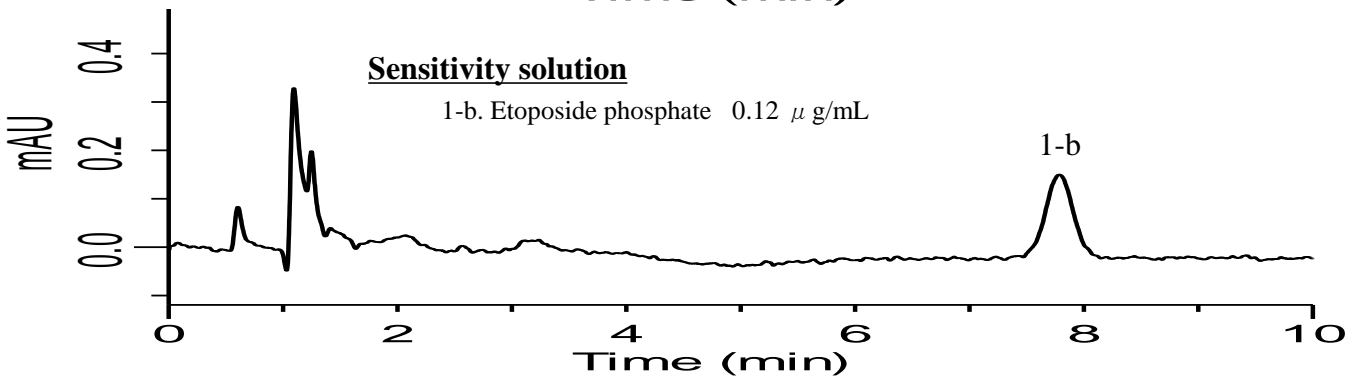
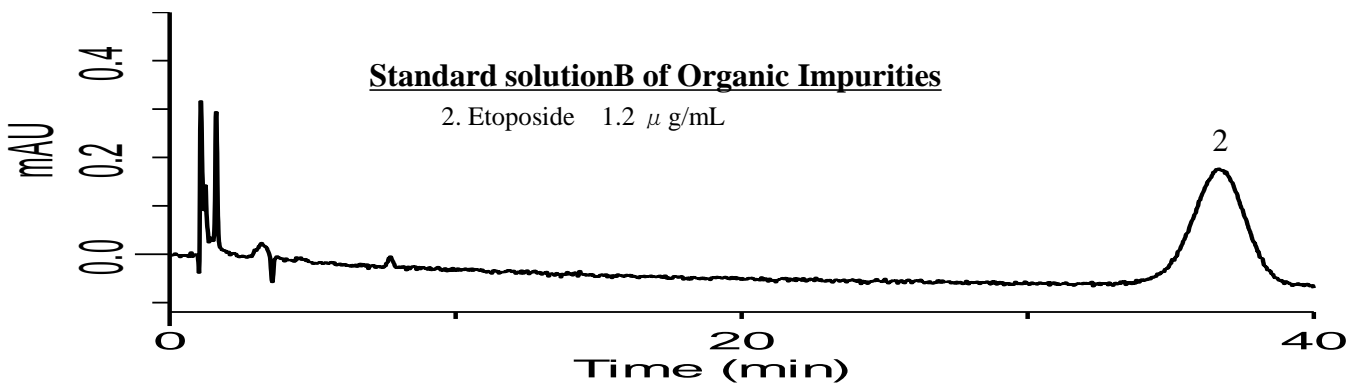
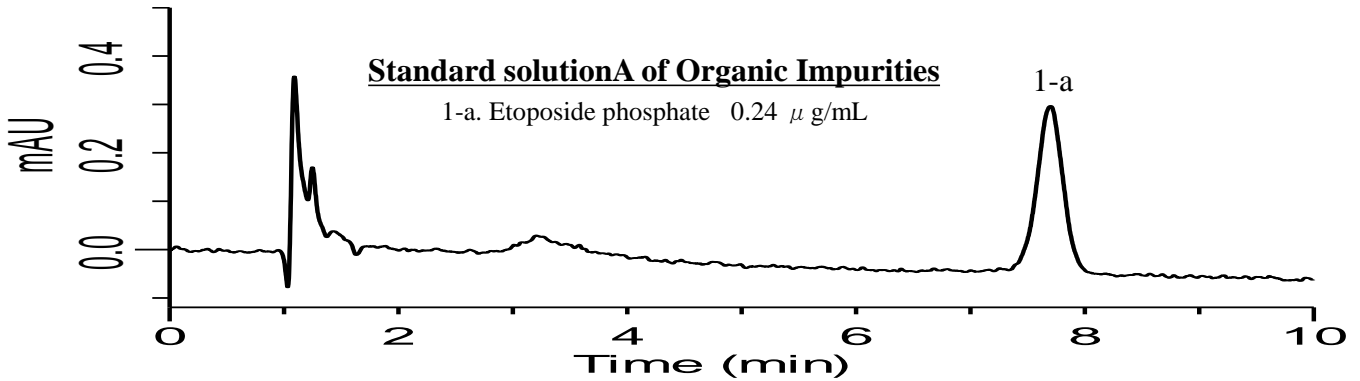
# InertSearch for LC

Inertsil Applications

## Analysis of Etoposide phosphate

(Under the Condition of draft for USP)

Data No. LB624-0812



### Conditions

**System** : GL7700 HPLC system  
**Column** : InertSustain Phenyl  
(5  $\mu$  m, 150 x 4.6 mm I.D.)  
**Column Cat. No.** : 5020-16327  
**Eluent** : A) CH<sub>3</sub>CN  
B) SolutionA\*  
A/B = 15/85, v/v\*\*  
**Flow Rate** : 1.5 mL/min  
**Col. Temp.** : 40 °C  
**Detection** : UV 230 nm (PD7752 PDA Detector)  
**Injection Vol.** : 25  $\mu$  L  
**Sample** : Standard

### Analyte

1. Etoposide phosphate  
2. Etoposide

RSD of the peak area of 1-a (%) (n=6) : 2.77 ( $\leq$  10)

RSD of the peak area of 2 (%) (n=6) : 2.85 ( $\leq$  10)

S/N for 1-b : 41.3 ( $\geq$  10)

\* 2.3g/L of ammonium phosphate, monobasic in water.

\*\* Acetonitrile and SolutionA (15 : 85). Adjust with phosphoric acid to a pH 2.5.