



# marimekko

WALLCOVERINGS VOL. 5

BY  
JANNELLI&VOLPI  
**JV**



## COLLABORATION

5th edition for Marimekko Jannelli&Volpi partnership!

Here is the new selection about young and ancient design by the Finnish Interior Home. Powerful iconic designs like Unikko, Kippis, Boo boo, together with newest design by Carina Seth Andersson and Maija Louekari. Unique taste and high-quality wallcoverings bring joy to our everyday lives through bold prints and colours.

## THE STORY

Marimekko is a Finnish design house celebrated worldwide for its original prints and colours. Founded in 1951 by a visionary woman Armi Ratia, Marimekko is said to be one of the world's first real lifestyle brands combining fashion and home decoration into one unique point of view. Through timeless, distinctive and functional designs, Marimekko wants to empower people to be happy as they are and bring joy to their everyday lives through bold prints and colours.



VELJEKSET design Maija Louekari

### TIMELESSNESS DESIGN

"Marimekko is not about trendy fashion, with a few minor exceptions. We make lasting and timeless products.

Timelessness may, however, occasionally come into fashion by chance, like now." Armi Ratia, 1978.

### FREEDOM OF CREATIVITY

We foster a carefree environment where our talented designers and craftsmen are guided, inspired and encouraged to truly express themselves.

We simply ask for our products to have an authentic, living soul.

### UNIKKO DESIGN

Maija Isola's (1927-2001) remarkable career as a textile designer began in 1949 in Marimekko and lasted 38 years. She designed more than 500 fabric patterns.

She drew inspiration for her work from traditional folk art, nature, and modern visual art alike.

Her design Unikko (poppy) continue to be an essential part of Marimekko's collections.



ARMI RATIA founder



MAIJA ISOLA designer



UNIKKO design Maija Isola

**RASYMATTO DESIGN**

Maija Louekari is a Helsinki-based freelance illustrator and designer who has studied at the University of Art and Design Helsinki.

The starting point of her career was in 2003 when she won a design competition co-organised by Marimekko and the University of Art and Design Helsinki. Her pattern *Räsymatto*, one of her most loved patterns in Marimekko's collection, is now available also as wall cover.



RÄSYMATTO design Maija Louekari

MAIJA LOUEKARI designer

**KIPPIS**

design Maija Louekari



N°14100

**ILTAVILLI**

design Miina Äkkijyrkkä



N°14105

**ILTAVILLI**

design Miina Äkkijyrkkä



N°14106

**RUUTUKAAVA**

design Maija Louekari



N°14111

**BOTTNA**

design Anna Danielsson



N°14131

**BUBI**

design Maija Louekari



N°23300

**LINTUKOTO**

design Maija Louekari



N°23305

**LINTUKOTO**

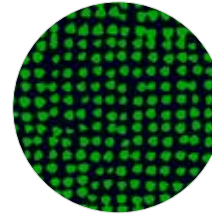
design Maija Louekari



N°23306

**ORKANEN**

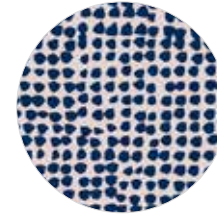
design Carina Seth-Andersson



N°23310

**ORKANEN**

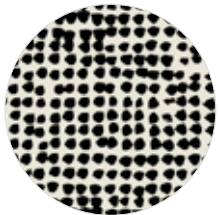
design Carina Seth-Andersson



N°23311

**ORKANEN**

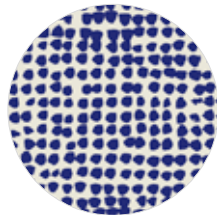
design Carina Seth-Andersson



N°23312

**ORKANEN**

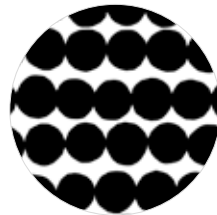
design Carina Seth-Andersson



N°23313

**RÄSYMATTO**

design Maija Louekari



N°23320

**RÄSYMATTO**

design Maija Louekari



N°23321

**YÖN VARJO**

design Sanna Annukka



N°23325

**YÖN VARJO**

design Sanna Annukka



N°23326

**PIENI TIARA**

design Erja Hirvi



N°23330

**PIENI TIARA**

design Erja Hirvi



N°23331

**PIENI TIARA**

design Erja Hirvi



N°23332

**VELJEKSET**

design Maija Louekari



N°23340

**VELJEKSET**

design Maija Louekari



N°23341

**VELJEKSET**

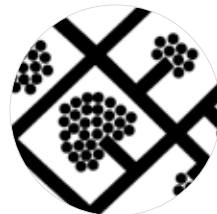
design Maija Louekari



N°23342

**SPALJE**

design Carina Seth-Andersson



N°23345

**SPALJE**

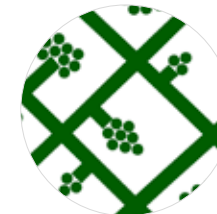
design Carina Seth-Andersson



N°23346

**SPALJE**

design Carina Seth-Andersson



N°23347

**UNIKKO**

design Maija Isola



N°23350

**UNIKKO**

design Maija Isola



N°23351

**UNIKKO**

design Maija Isola



N°23352

**UNIKKO**

design Maija Isola



N°23353

**UNIKKO**

design Maija Isola



N°23354

**YSTÄVÄT**

design Maija Louekari



N°23360

**YSTÄVÄT**

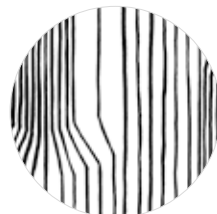
design Maija Louekari



N°23361

**FREKVENSSI**

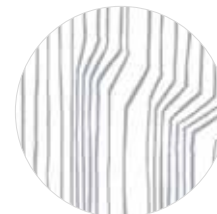
design Harri Koskinen



N°23365

**FREKVENSSI**

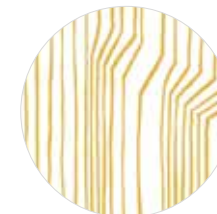
design Harri Koskinen



N°23366

**FREKVENSSI**

design Harri Koskinen



N°23367

**BOBOO**

design Katsuji Wakisaka



N°23370

**LUMIMARJA**

design Erja Hirvi



N°23375

**LUMIMARJA**

design Erja Hirvi



N°23376

**PIENET KIVET**

design Maija Isola



N°23380

**PIENET KIVET**

design Maija Isola



N°23381



YÖN VARJO design Sanna Annukka



BUBI design Maija Louekari



KIPPIS design Majja Louekari



LINTUKOTO design Majja Louekari



SPALJE design Carina Seth-Andersson



PIENET KIVET design Maija Isola





PIENI TIARA design Erja Hirvi



RUUTUKAAVA design Maija Louekari



BOTTNA design Anna Danielsson



BO BOO design Katsuji Wakisaka



LUMIMARJA design Erja Hirvi



FREKVENSSI design Harri Koskinen



ILTAVILLI design Miina Äkkijyrkkä



ORKANEN Carina Seth-Andersson



[www.jv-wallcoverings.com](http://www.jv-wallcoverings.com)

**HEAD OFFICE** Via Cassino d'Alberi 19 | 20067 | Tribiano | Milano (Italy) - **JVSTORE** via Melzo 7 | 20129 | Milano (Italy) | tel +39 02 20523.1

[info@jannellievolti.it](mailto:info@jannellievolti.it) | [customer@jannellievolti.it](mailto:customer@jannellievolti.it)