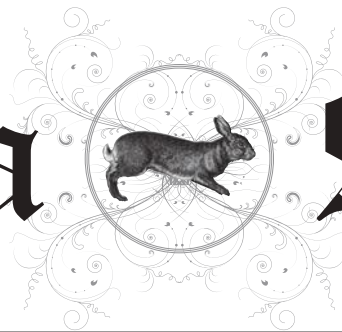


# Winchelsea Star

Price \$1

Your Weekly Community Newspaper

Since 1977



Vol 46 Ed 31

Tuesday 15 August 2023

[winchelseastar.org.au](http://winchelseastar.org.au)



Victoria Hastings came to Australia on a working holiday 33 years ago, met her husband Michael Hastings - and stayed here!  
She loves living and working in Winchelsea



Winchelsea  
Community  
Groups  
Join today!

**Quick  
Response  
Grants**

**NOW OPEN!**

Grants of up to \$3,000 for equipment and community led projects

To apply: [surfcoast.vic.gov.au/Grants](http://surfcoast.vic.gov.au/Grants)

[surfcoast.vic.gov.au](http://surfcoast.vic.gov.au)



## Looking for your bin collection dates?



### Check collections anytime



via **SCRRApp** (free waste app) under Services (rolling 12 month calendar) [surfcoast.vic.gov.au/SCRRApp](http://surfcoast.vic.gov.au/SCRRApp)

Smith St, Lorne

at [surfcoast.vic.gov.au/mybin](http://surfcoast.vic.gov.au/mybin) (enter your address to check your next collection day)



at [surfcoast.vic.gov.au/calendars](http://surfcoast.vic.gov.au/calendars) to get a 12 month calendar ending in October

### If you still need a printed calendar for 2023/24, you can:



go to [surfcoast.vic.gov.au/calendars](http://surfcoast.vic.gov.au/calendars) to download and print a PDF version of the November-October calendar



download and print a PDF of the rolling 12 month calendar via the Services tab on **SCRRApp**



go to [surfcoast.vic.gov.au/optin](http://surfcoast.vic.gov.au/optin) and complete the form by COB on Thursday, 31 August\* and we'll post you a calendar in October

(Call us on **5261 0600** if you need help completing the form)  
\*Only ratepayers can opt-in to receive a printed calendar



**Download SCRRApp NOW**

... it's got you sorted



[surfcoast.vic.gov.au/SCRRApp](http://surfcoast.vic.gov.au/SCRRApp)



# Our Winchelsea Neighbours

## Victoria Hastings



"The Vault" at 30 Main Street Winchelsea specialises in Australiana and Australian made goods and has been operating now for 17 years. It stocks a large range of ostrich leather goods, dusters and ostrich eggs, along with a huge range of other gifts - goods with a point of difference for all ages and interests.

The shop was established to assist in the distribution of the Hastings farm's products and provide a unique shop in the town to attract people to stop in town. To add to this, ostrich farm tours have been added to attract bus groups, clubs and groups to visit the area.

The Vault is open on the weekends 10 am til 4 pm. From October to the end of April, it will be open on Fridays as well. During the week, it is also open by appointment.



The Hastings Ostrich Farm is open for guided farm tours in spring, summer and autumn for groups of 10 or more by appointment.

Victoria Hastings grew up near the small village of Epwell in Oxfordshire, England.

She came to Australia on a working holiday 33 years ago, met her now husband Michael - and the rest as they say, is history!

**"I love living in Winchelsea, it's such a great community and you can get pretty much everything you need here. Everyone is friendly and supportive."**

Victoria loves reading, gardening, cooking, her family, volunteering in the community, all her farm animals and coffee. (Not necessarily in that order!)

Victoria and Michael own and operate Hastings' Ostrich Farms and 'The Vault' farm shop, as well as Whiteline Speckle Park Stud. They also have a commercial Angus herd - which keeps them very busy!

The day to day running of the farms takes up all of Victoria's time and then she is in the farm shop on weekends.





# Cat curfew drop-in sessions

## Are you a cat owner?

Now's the time to prepare for the 24-hour cat curfew, starting in the Surf Coast Shire on 30 September.

Chat to our Ranger Services team at a drop-in session on **SATURDAY 19 AUGUST** at:



### TORQUAY FARMER'S MARKET

1 Merrijig Drive  
9.30am to 10.30am



### ANGLESEA COMMUNITY HOUSE

5 McMillan Street  
11.30am to 12.30pm



### WINCHELSEA SHIRE HALL

28 Hesse Street  
2pm to 3pm

**From 30 September**, Council's revised cat confinement order requires all cats within the municipality to be confined at all times to the owner's premises unless the cat is appropriately restrained.

Learn more about how modifications can be made to your property and your cat's behaviour to comply with the 24-hour curfew by attending a drop-in session, or visit

[surfcoast.vic.gov.au/CatCurfew](http://surfcoast.vic.gov.au/CatCurfew).



THEATRE OF THE DAMNED PRESENTS  
**WILLY RUSSELL'S**  
 MUSICAL  
**BLOOD**  
*Brothers*  
 August 18th - 26th  
 AT BELMONT HIGH SCHOOL  
 PERFORMING ARTS CENTRE  
 BOOKINGS THROUGH  
[www.trybooking.com/CFSQB](http://www.trybooking.com/CFSQB)  
[theatreofthedamned22@gmail.com](mailto:theatreofthedamned22@gmail.com) Tony 0425 786 843



## Winchelsea Pram Walks

Explore pram-friendly walking routes in your local area with a member of the Surf Coast Shire Child and Family Health team. Come along, have a chat, and meet other parents with little ones!

No bookings required, simply show up!

Third Tuesday of the month

Cafe La Hoot, 1 Willis Street, Winchelsea, 3241  
FREE

Tuesday, 15 August 2023 | 10:00 AM - 11:00 AM  
Tuesday, 19 September 2023 | 10:00 AM - 11:00 AM  
Tuesday, 17 October 2023 | 10:00 AM - 11:00 AM  
Tuesday, 21 November 2023 | 10:00 AM - 11:00 AM

Child and Family Health 5261 0549  
[childandfamily@surfcoast.vic.gov.au](mailto:childandfamily@surfcoast.vic.gov.au)



## More recreation space for Common

Community members and visitors will have greater scope for enjoying Winchelsea Common's flora, fauna and open space, with Council preparing to reopen its former go-kart track area.



This space has remained closed since areas of the much-loved Common were reopened early in 2022, but a 2016/17 Future Use Plan designating it for full remediation as an active recreation zone will soon be realised.

Sections of the Common were reopened in March 2022 following extensive work by the then Department of Environment, Land, Water and Planning and Council to clean up contamination from former gun club activities and prepare the site for restricted public access.

The former go-kart area contains contaminated soil from throughout the Common, but is safely capped with non-contaminated soil.

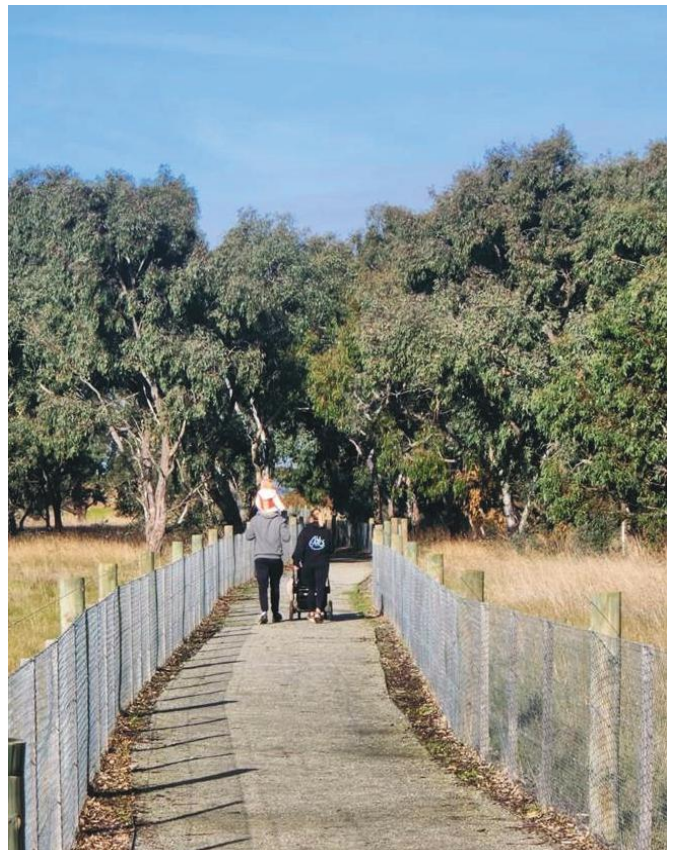
An Environmental Management Plan restricts excavation and movement of soil within the space however we are planning to complete works to activate the space with walking paths, seating and a new path cross-over into the area by the end of 2023, within a budget of \$150,000.

The works will improve amenity and increase access to a beautiful viewing area of the Common, including one of the Common's sentinel River Redgums.

Information on the scope of the works will be shared with the community early in September 2023.

Improvements as part of rehabilitation work at the Common already being enjoyed by the community include an all-weather shared path, an off-leash dog area, mown grass play area, landscaping, and protection of areas of sensitive vegetation.

Interpretative signage will also soon be installed.



# Digital Antennas

Have the professional do the job correctly

- Latest Digital Technology
- New Kingray Boosters
- Fully Equipped Mobile Vans With Qualified Technicians stocked with large range of cables & connectors
- TV Brackets
- Digital TV Antennas with: Heavy duty construction
- Durable plastics for harsh Australian conditions
- Higher in gain and directivity



**WE SERVICE THE BELLARINE,  
THE SURFCOAST AND GEELONG**

**MANUFACTURED  
BY US  
IN GEELONG**

**Hi-Gain Antennas P/L**  
**SALES & INSTALLATIONS**

**Ph: 5222 2711**

**Monday – Thursday 7.30am – 4.30pm**  
**Friday 6.30am – 10.30am**



# Come, join in the fun and raise money to help Max

The Winchelsea Bowls Club is gearing up to host a fundraising trivia night on Friday September 1st at 7:00 PM. The Trivia Night aims to raise funds to support the promising young junior bowler, Max Heaton-Harris, who will be representing Victoria at the prestigious School Sport Australia Championships.

The event will take place at the Winchelsea Bowls Club located at 45 Hesse Street.

Max Heaton-Harris, a dedicated and talented junior bowler, has earned the honor of representing Victoria at the School Sport Australia Championships in Tweed Heads later this year. The Winchelsea Bowls Club recognises his exceptional skills and is committed to ensuring that Max's dreams are realised. The funds raised from the trivia night will contribute towards Max's participation and travel expenses for the event.

The Trivia Night promises a fun filled challenging evening. Participants can look forward to testing their knowledge on a wide range of topics while supporting a great cause. The event will feature multiple rounds of trivia questions, ensuring that there's something for everyone to enjoy. Attendees will also have the opportunity to win exciting prizes generously donated by local businesses and supporters of Max's journey.

Registration for the trivia night is now open, and participants are encouraged to secure their spots early. Tickets are priced at \$10 with all proceeds going towards Max's championship endeavor. The Winchelsea Bowls Club invites both individuals and teams of 8 to join in the trivia fun and contribute to this meaningful cause.

For further information about the event or to register, please contact Kristen at 0413 880 575.

**TRIVIA NIGHT**

Fundraiser for junior Max Heaton-Harris representing Victoria at the School Sport Australia Championships in Tweed Heads!

Join the ultimate trivia night extravaganza and put your knowledge to the test for a thrilling evening of brain-teasing fun and exciting prizes.

**Friday 1st Sept, 2023 07:00 PM**  
Winchelsea Bowls Club  
45 Hesse St Winchelsea

Tables of 8 - \$10 per person  
Call or sms to 0413880575 to book your spot.  
Haven't got a team, don't worry we can help!  
Book now - everyone welcome!  
BYO Nibbles/Snacks - Drinks at bar prices

\*Places are limited\*

# Winchelsea Star

## contact us

### NEWS and ARTICLES ARE MOST WELCOME

Include name and address of the sender  
 Email [news@winchelseastar.org.au](mailto:news@winchelseastar.org.au)  
 Leave hard copy at IGA Supermarket

### DEADLINES

#### 5pm Fridays

4pm Sundays - hard copy articles left at IGA  
 6pm Sundays - sports results and weekend events

### FREE DIGITAL SUBSCRIPTION

[winchelseastar.org.au](http://winchelseastar.org.au)

### ADVERTISING

[advertising@winchelseastar.org.au](mailto:advertising@winchelseastar.org.au) 0408 102 802  
 600 online subscribers,  
 250 copies printed for outlets around Winchelsea

## follow us

### ONLINE

[winchelseastar.org.au](http://winchelseastar.org.au)

### FACEBOOK

[facebook.com/TheWinchelseaStar](https://facebook.com/TheWinchelseaStar)

### PRODUCTION

<b>Editors:</b>	Cerrie Fogan, Yvonne Stevens, Judy Cameron
<b>Advertising:</b>	Sasha Gauntlett, Neil McInnes
<b>Design:</b>	Tony Phelps, Susan Corby
<b>Printing:</b>	Winchelsea Community House
<b>Website:</b>	Winch Websites

### COMMITTEE

<b>President:</b>	<a href="mailto:president@winchelseastar.org.au">president@winchelseastar.org.au</a> Mick O'Mara
<b>Treasurer:</b>	<a href="mailto:treasurer@winchelseastar.org.au">treasurer@winchelseastar.org.au</a> Cathy Cheadle
<b>Secretary:</b>	<a href="mailto:secretary@winchelseastar.org.au">secretary@winchelseastar.org.au</a> Tony Phelps
<b>Members:</b>	Linda Carter, Sasha Gauntlett, Neil McInnes, Judy Cameron, Yvonne Stevens, Cerrie Forgan,

© Winchelsea Star Org. Inc. All rights reserved  
 Winchelsea Star Organisation Inc.  
 Reg. No. A0053999F, ABN: 75 941 529 279  
[winchelseastar.org.au](http://winchelseastar.org.au) PO Box 5, Winchelsea, 3241  
 Views expressed are not necessarily those of the  
 Winchelsea Star or its Committee. The Winchelsea  
 Star reserves the right to edit or not publish any article.



## You can write for the Star

We want the Star to inform, engage, inspire, and interest the residents of Winchelsea and surrounds. And we need your writings to get there.

The Star has no actual reporters or designated writers - we publish what you send us. If you have some news, an opinion, an interest or perspective, or a story - we'd love you to send it in for publication.

The Star loves to hear anything of direct interest to the Winchelsea community. The more local content we can put in, the better!

### How much can I write?

You can write just one article. You can start a new column about something you're interested in. You can send us a series of articles following a theme. What would **you** write about?

Your article can spread over 1 or 2 pages (approx 850 words), or you can write longer pieces and split them across multiple editions.

Add a photo or two, an article title and author's name (preferably).

### Can you publish my photos?

A picture is worth a thousand words - but context is very interesting too! If you've taken a photo you'd like in the Star, add a few words describing where, when, who, why and/or what.

### Ask permission to use photos

When you send us a photo, you give us implied permission for reproduction.

You have liability when publishing an image, so be sure you own the image or have written approval to use it. It is easy for copyright owners to find stolen images online, where the Star can be found.

### Legalities

Our Editors will not approve anything libellous (ie. when a false statement is published in written form and does harm to a victim). The Star is a community newspaper - 'for' and 'against' opinions on contentious topics are welcome, but attacking individuals or groups is not.

We look forward to hearing from you.  
 Simply email [editor@winchelseastar.org.au](mailto:editor@winchelseastar.org.au)





## The Climate Report Judy Cameron

Those of us on Twitter – or X as it is now known - know it can be a toxic place and full of misinformation. But it is also useful for alerting us to important issues.

Here are a few from this week:

### **Environment Victoria@EnviroVic**

"The survey found only two mature Murray cod in a 140km stretch of river" This is a river system in crisis. With the next drought around the corner, we need to make sure rivers have the water they need to survive!

### **Australian Conservation Foundation@AusConservation**

Platypus numbers are in decline, and this unique creature is now at risk of localised extinction in parts of its range. Land clearing, dams and drought destroy important platypus habitat, leaving them with nowhere to go. Extreme events like bushfire can put pressure on populations too. This September, we're asking people like you to head down to their local creek or river, find a quiet place on the bank, try to spot a platypus and record what you see. Go to [www.acf.org.au/platy-project](http://www.acf.org.au/platy-project) for more information.

### **Renew@reneworgau**

Our recent report found Victorians could cut their heating bills in the winter months by as much as 75 per cent if they ditched gas in favour of efficient reverse-cycle airconditioning. #GetOffGas Once upon a time...there was a good case for gas: when the alternatives were wood and oil heating and electricity generated by burning coal, gas really was a cleaner fuel.

### **Fossil Ad Ban@FossilAdBan**

Melbourne's @YarraCouncil implemented a ban on fossil fuel advertising. A great outcome for the health of the community. 150 submissions have been made to the Senate Greenwashing Inquiry from groups including @climatecouncil @accgovau @TheAusInstitute @WWFAustralia and @AusConservation just to name a few. Let's keep the momentum going. Head to <http://fossiladban.org> to find out how you can support a ban on fossil fuel advertising and sponsorships.

### **ABC News@abcnews**

Three-hundred residents in the New South Wales city of Goulburn band together to build their own solar energy project on the edge of town.

### **Wendy Harmer@wendy\_harmer**

Kaumaha #hawaiifires. Looking at Hawaii with empathy and dread because here in OZ, we cannot forget the toll of Australia's 'Black Summer' bushfires of 2019:

- 24.3 million hectares burned
- 33 people died
- 3 billion native animals perished or displaced
- 3,000 homes lost

### **Prof Michael E. Mann@MichaelEMann**

Planetary warming (and e.g. the extreme weather events driven by it) stabilizes when human carbon emissions reach zero.

The "tools" that can accomplish that task are:

- ✓ renewable energy transition
- ✓ smart grids and energy conservation
- ✓ decarbonization of societal infrastructure

## Capture the Coast:

### Calendar Photo Competition

#### Terri Heard

One Agency Surf Coast's wildly popular photo competition is back -- for a fifth year!

One Agency is inviting all amateur and professional photographers to submit their favourite Surf Coast photos for a chance to feature in the highly anticipated 2024 calendar.

Shaun O'Callaghan, One Agency Surf Coast Director, said the brief is simple: capture what you love about Torquay, Jan Juc, Bellbrae, and Bells Beach (postcode 3228).

"Whether it's beautiful beaches, awe-inspiring landscapes, sick surf, mesmerizing sunrises or sunsets, vibrant wildlife, charming streetscapes, or captivating countryside – let your creativity run wild!

"Brace yourselves for an epic competition, as the esteemed local surf photographer, Ed Sloane, will take on the tough task of judging the extraordinary entries once again," he added.

Snap away with your camera or smartphone, as long as your photos meet the high-quality print standards of A4 size (minimum 300 DPI) – the possibilities are endless!

As well as being handpicked to grace the pages of One Agency's calendar, the winning photographers will receive well-deserved recognition through photo credits, extensive social media exposure, media coverage, and other promotional avenues.

It's not just the judges who have a say! The public will also have the opportunity to vote for their favourite shot from the selection of winners. Keep an eye on One Agency's Facebook Page for updates.

The 2024 calendars will be available FREE of charge for everyone. Make sure to swing by One Agency's office at 22 Bristol Road Torquay towards the end of the year to collect your copy.

To enter, email low-resolution versions of your photos, including the photo location, your name, email, and phone number, to [torquay@oneagency.com.au](mailto:torquay@oneagency.com.au) by Monday 25 September 2023.

More information can be found online at [oneagencysurfcoast.com.au](http://oneagencysurfcoast.com.au).

# Winchelsea Star **COMMUNITY Noticeboard**

## **FREE ADS**

email  
editor@winchelseastar.org.au  
or leave at Winchelsea IGA

## **FREE SOIL**

Good clay for improving sand or mixing  
with compost for garden beds  
Call Dimon 52 672 987

## **Dancing at Wurdale Hall**

220 Wurdale Road  
Saturday 12 August 7.30pm-11.30pm  
Cost \$10.00  
Supper provided,  
Raffle and door prize  
Music supplied by Charles Pedder  
A good time guaranteed.  
Contact Maureen.0409253188  
or Ray.0438830638

## **Free to a good home TV unit.**

Fits 33 inch TV. Phone 0439 817 263



## **FOR SALE**

### **THE GOON SHOW BOOKS**

8 Spike Milligan, 2 Peter Sellars \$30

**Citroen Car Mats** 1 Pair \$15

**Car Brochures** (European)

Various Prices.

Phone 0425 872 122

## **POSITION WANTED**

Local mum seeks casual position  
as companion for elderly lady or  
as house sitter, pet sitter,  
horse care etc. Ph: 52 672 987

## **WINCHELSEA HOSPITAL OP SHOP:**

Op Shop closed Monday 14th August  
due to Annual General Meeting.

## **Free THE MONTHLY magazines**

Box of magazines Judy 0409417562



## **Trevor Green 70th Birthday Party**

1 - 5pm 22 October 2023

The Member's Room at The Hub

Family and Friends Invited

RSVP 7 October 2023

Contact 0408 520 877 or 0410 165 346

The Winchelsea Star is pleased to print Announcements  
of local Births, Engagements, Marriages, Birthdays, Anniversaries,  
and Deaths and Funerals.

Email editor@winchelseastar.org.au or leave at Winchelsea IGA

## Ongoing opportunities to get more involved with Friends of the Barwon



Our committee continues to put a great deal of voluntary time and effort into FOTB in our fight for a healthier river system. We would love to get more of our Friends actively involved with our work and there are a range of ways that your skills can be put to good work.

We are looking for Friends with skills including;

- computer,
- website and social media management,
- photography,
- research and involvement with relevant advisory committees.

If you would like to get more involved as a Committee member or in other ways that could help, please email Liz Hamilton at friendsofthebarwon@gmail.com or ring 0400 780680 and briefly outline what skills and time commitments you may be able to provide as well as your contact details.

# Community Calendar Competition

Entries open Friday 18 August - Friday 15 September

The 13 winning artists will receive a \$300 cash prize and artist acknowledgment in the Calendar.

Entries open Friday 18 August and close Friday 15 September at 5pm.

To view the full terms and conditions and to enter, visit [surfcoast.vic.gov.au/calendarcomp](http://surfcoast.vic.gov.au/calendarcomp).



Peace Dove by Clancy Morrissey, one of the calendar's 2023 Child category winners

The Surf Coast Shire Community Calendar Competition will return with a refresh, in a bid to showcase more emerging local artists.

This year's competition sees 'child' and 'youth' split into two separate categories. Councillor Rose Hodge welcomed the updated eligibility criteria, which requests that artwork is no larger than 600mm x 600mm and is ready to hang.

"All eligible entries in the competition are displayed at a community exhibition at Anglesea Art House," Cr Hodge said.

"Last year's exhibition received an extraordinary response, so much so, the curators almost ran out of wall space. We hope the revised criteria will open up more opportunities for artists, make for a wonderful exhibition, and showcase the winning pieces in the Calendar in the best possible way."

As part of criteria changes, artists who have appeared in the Calendar in the past two years are not eligible to enter. This change seeks to ensure best possible access to the program and highlight a diverse range of community artists.

The Community Calendar Competition invites entries from Surf Coast Shire residents and ratepayers. All eligible entries will be on display at the Community Calendar Exhibition, launched at Anglesea Art Space on Friday 13 October at 6pm. The exhibition's opening weekend is Saturday 14 October and Saturday 15 October. It then continues in October, open from Tuesday to Sunday.

A judging panel will select its 12 favourite works across the four categories – child, youth, open 2D and open 3D, while a People's Choice vote will determine the piece that will be on the cover.

"I encourage eligible local artists to enter the competition," Cr Hodge said. "It offers fantastic exposure for all entrants, who get a thrill out of being featured in an exhibition. It's an even bigger thrill for the winners, to see their work in a publication that is distributed far and wide."

## Protection for sports playing women and girls

The State Government is backing the development of an innovative chest protection vest as an added layer of injury prevention for women and girls who play contact sport.

Breakthrough Victoria is investing \$148,000 into Geelong-based sportstech company Zena Sport, which has developed the world's most advanced breast and rib protection vest for women and girls who play contact sport such as football (soccer), AFL and rugby.

The Zena Z1 Vest is made from a liquid polyurethane foam that is injected directly into the fabric of the vest and molded to create a single, seamless barrier between the ball or elbow and the breast tissue or ribs.

Designed in collaboration with Deakin University, the vest absorbs the initial impact of a blow and distributes the energy over a larger area to reduce the likelihood of injury. According to research undertaken by Zena, breast injury is an issue that lacks awareness despite the high instance of contact-induced injury among female athletes.

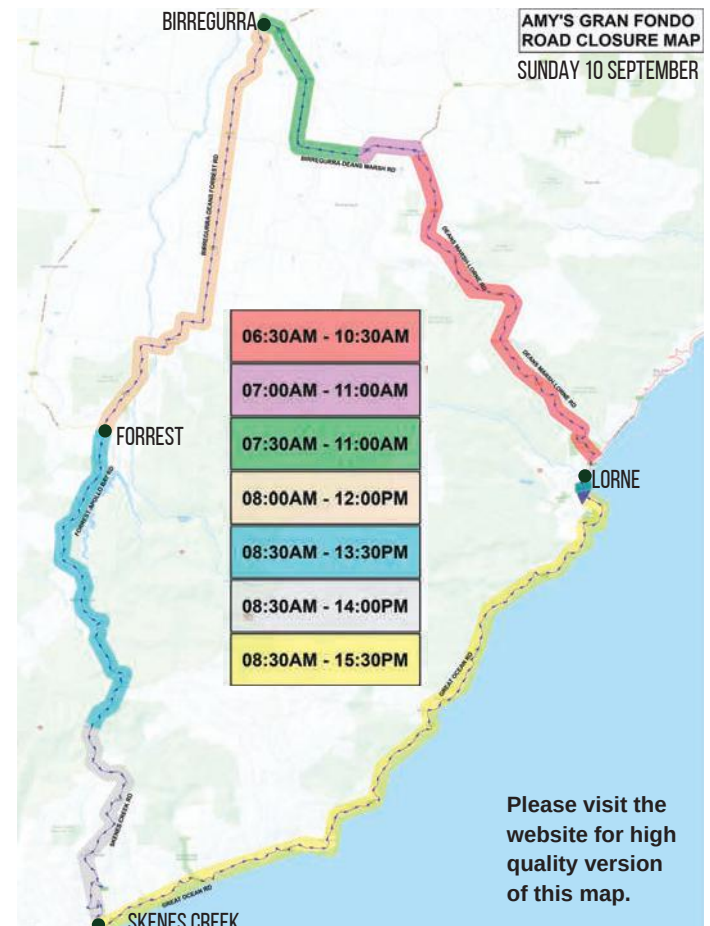
Zena Sport was established in 2018 by former AFL team captain Brad Johnson and his partner Donna Johnson, after seeing the need for inclusive protective gear for women and girls who play contact sport.

## Amy Gran Fondo ride Road closure information

Amy's Great Ocean Road Gran Fondo is set to return on 9-10 September 2023! Amy's Great Ocean Road Gran Fondo is an internationally recognised, world-class event, held on fully closed roads in one of the most picturesque destinations on the planet – the Great Ocean Road.

### Road Closures

Amy's Great Ocean Road Gran Fondo is regarded as one of Australia's safest cycling events. To ensure the safety of all event participants and the community, temporary changes to traffic conditions must be implemented. Appropriate traffic control measures are approved by Victoria Police and the relevant road authority will be temporarily installed on all intersections and access points to private property that provide vehicle access onto the course. For further traffic information please visit : Amy Gran Fondo Road Closures Info



### Register your interest for 2025!

This year it was announced that the 2025 UCI World Gran Fondo Championships will be held in conjunction with the Amy's Gran Fondo, in Lorne. This double whammy of international and national exposure is going to be a great economic boost for our region and we would love to hear from you. If you would like to be a part of this exciting event weekend (October 2025), please email: XXJF@SJC.com.au to register your interest.

*Hesse Hearts of Gold*

**MASQUERADE BALL**

Black Tie - Barwon Park Mansion  
105 Inverleigh Rd - Winchelsea

**Saturday · October 28 · 5PM**

*Ticket enquiries contact Hesse Rural Health  
52671200 or reception@hesse.vic.gov.au*



# Change of guard for Hesse Rural Health Board of Directors

From July, Hesse Rural Health welcomed five new Directors to its Board. This followed the departure of many long serving Board Directors, who completed their appointments on the 30th June.

Hesse thanks and acknowledges the below departing Board Directors, for their commitment and service in ensuring Hesse continues providing safe and effective person centred care.

- **Kathy Taylor:** Director for 9 years, including 5 years as the Board Chair and time as Chair of the Board Marketing and Fundraising Committee.
- **Michelle Stocks:** Director for 9 years, and a member of the Hesse Community and Consumer Advisory Committee (including time as the Chair).
- **Therese O'Loughlin:** Director for 6 years, and a member of the Care and Clinical Governance Committee including a recent period as Chair.
- **Peter Nemtsas:** Director for 5 years, including time as Chair of the Board Building Committee.
- **Claire Winter-Irving:** Who started on the Hesse Board in July last year, however due to her new role with the Victorian Department of Health had to end her term early.

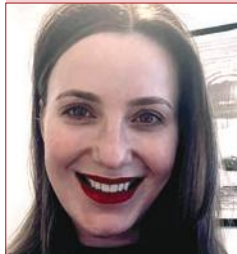
Joining the remaining four Hesse Board Directors, are the following new Directors:

- **Vesna Allan:** Legal practitioner living in Geelong. Currently Chief Legal Counsel, Governance and Risk Officer for the City of Greater Geelong, with an interest in construction and capital works, and public sector experience in corporate governance. Holds a Graduate Certificate of Corporate Governance and Risk Management, and recently completed the Australian Institute of Company Directors course.
- **Claire Goodwin:** Radiation Therapist with clinical and operational leadership experience, currently managing overall daily management of a radiation oncology centre. Masters of Health and Human Services Management and a Masters of Business Administration. Lives in Melbourne with family on the Surf Coast.
- **Angela Hurren:** Experienced public practice accountant (CPA) with a Bachelor of Commerce, currently working for Lorne Accounting Group. Living in Winchelsea and committed to giving back to community, current Winchelsea CFA Secretary, and previously Winchelsea Primary School Council member.
- **Melika Sukunda:** Finance professional and previous audit supervisor, currently Manager Finance, Procurement and Assets for Nillumbik Shire Council. A member of Institute of Chartered Accountants and enrolled in Australian Institute of Company Directors Company Directors Course.
- **Kym Peter:** Experienced Registered Nurse and Midwife, and previous Nursing Director at Bendigo Health, Wimmera Health Care Group, Ballarat Health Service, and Lorne Community Hospital. Current Project Lead for a Planned Surgical Reform Initiative in the Hume Region, Masters in Clinical Nursing, Business Degree in Economics. Experienced Board Director living in Newtown, completed the Aged Care Accreditation program and current member of the Australian College of Critical Care Committee, Victoria Branch.

Ian Whiting, Chair of Hesse Rural Health's Board of Directors, welcomes the new Directors and is pleased that Hesse continues to ensure fair representation of both women and men on our nine member Board.

"Our new Directors brings a great and diverse range of expertise in finance, legal and clinical practice, to complement the existing Hesse Board Directors skillset, and they are all a welcome addition to the Board," Hesse Rural Health Board Chair, Ian Whiting said.

Hesse Rural Health is thankful for the departing Board Director's years of dedicated service and expertise, and wish them all well in their many other pursuits and community activities.



Vesna Allan



Claire Goodwin



Angela Hurren



Melika Sukunda



Kym Peter

# SERVICES AND ACTIVITIES IN WINCHELSEA

## VLINE TRAIN SERVICES

### TO MELBOURNE:

Mon - Fri 6:41 am, 7.57am, 11:14am, 2:08pm, 7:23pm  
Sat - Sun 9:26am, 1:30pm, 7:18pm

### TO WARRNAMBOOL:

Mon - Fri 8.56am, 11.55am, 2:50pm, 5.27pm,  
6:45pm, 8:50pm  
Sat - Sun 8:47am, 2:46pm, 8:34pm



## COUNTRY WOMEN'S ASSOCIATION

7pm second Wednesday of month  
Winchelsea Senior Citizens' Hall



## WINCHELSEA SES

Every Wednesday  
Visitors and inquiries welcome  
0408 102 802



## WINCHELSEA AND DISTRICT COMBINED PROBUS CLUB

Meets 1st Monday of the month at 10am.  
Senior Citizens Rooms,  
Harding St, Winchelsea.  
New members always welcome.

## WINCHELSEA TRANSFER STATION

55 Cressy Road, Winchelsea

Monday	Closed	Tuesday	2pm-4pm
Wednesday	Closed	Thursday	2pm - 4pm
Friday	Closed	Saturday	1.30-3.30pm
Sunday	9.30-12.30pm		

Accepts household garbage, mixed commercial and industrial waste, mixed construction and demolition waste.

Accepts recyclable materials.

Accepts one recycle bin two waste bins.

Does NOT accept clean fill.

## WINCHELSEA GIRL GUIDES

Our Unit meets at the Catholic Church Hall,  
Harding St Winchelsea each Monday 4.30pm-6pm  
All girls 5yrs- 15yrs Welcome!  
Contact Yvonne Orchard 0448 672 630  
or Bonnie Stokes 0401 386 274



## 1ST MODDA AND 1ST WINCHELSEA SCOUT GROUP

**Joey's:** Tuesdays of school term 5-6pm  
**Cubs:** Mondays of school term 6:30-8pm  
**Scouts:** Tuesdays of school term 6:30-8:30pm  
All at Modewarre Hall, Cape Otway Rd  
**Venturers:** Wed at Walton's Rd Venturer Den  
Contact Marie McPadden 0409 330147

## BUS TO THE HUB

For reservations on the weekly bus  
to the Eastern Reserve Hub,  
please phone 52671202.

## SURF COAST MOBILE LIBRARY

Hesse St, Fridays, 2pm-5pm  
Surf Coast Mobile Library  
parked in Hesse Street (outside Shire Hall)  
Fridays between 2:00 and 5:00pm  
unless it is a Public Holiday.

## WINCHELSEA TAXI

0429 672 888 or 5267 2888

Wheelchair accessible  
10 seater bus available.

## WINCHELSEA PLAYGROUP

Every second Thursday 10am-12pm  
St Thomas Anglican Church Hall  
cnr Barwon Tce and Hopkins St, Winchelsea  
Contact: Melissa 0456181268  
Facebook - Winchelsea Playgroup 2019  
**New families welcome**



## Welcome to Blue's News:

Last Saturday the Winchelsea Blues travelled to West Oval home turf of the Geelong West Giants in what was the last "away" game for season 2023. There were mixed results by the end of the day. On the Netball court it proved to be generally a good day, A grade having a stunning win, B grade a stunning loss, and may now be out of their Finals campaign. The football field also had mixed results for the afternoon.

## Community Day:

This week is Round 18 the last of the home and away games and the W.F.N.C. will host Anakie Football & Netball Club. There will be no charge at the Gate, entry is free, there will be face painting available inside next to the Canteen starting at 12.30pm and the Animal Nursery Farm is coming to Eastern Reserve from 1pm until 3pm. There will be food options available, the Canteen will be only doing salad rolls for the footballers and netballers and will not be operating as usual. There is a full day of Netball and the Reserves kick off at 12pm, followed by the Seniors at 2pm.

## Junior Football:

The Under 10 side had their last game for 2023 last Saturday and will have their Presentations this Thursday evening at Eastern Reserve. There has been great improvement from the whole side, Coach Lachie Kendall has been terrific in his role as Coach and Byron Mathison driving the Teams Management has also been fantastic! Everyone is looking to next year to continue the rebuild of Junior sides for the W.F.N.C.

None of this rebuild would have been possible without the help and support of this group of parents – they too have been working hard over the season - well done everyone!

"From little things big things grow!"

## Blue's Bistro:

This week the Menu is .....

CHICKEN SCHNITZEL / PARMI

SHEPHERD'S PIE

MARY'S FAMOUS BATTERED FISH

DESSERT

APPLE CRUMBLE / CHOCOLATE RIPPLE CAKE

## RESERVES:

### Winchelsea Blues were defeated by Geelong West Giants.

There were late withdrawals from the Senior side which of course left the Reserves struggling for numbers, that coupled with a growing injury list made the game difficult to approach. The game was a must win for the Reserves to play Finals this season in what is a very even, tight Ladder situation. The Reserves have had a solid season in 2023 with 11 wins and are still struggling to make the Finals after last weeks loss, which is very disappointing. To say the team was flat after the game is an understatement.

#### GOALS:

Will McNeil 1, Coby Eagle 1.

#### BEST:

Bailey Forssman, Will McNeil, Damian Tabakovic, Shaun Morris, Jack O'Brian, Luke Carmichael

## SENIORS:

### Winchelsea Blues 12.9.81 defeated Geelong West Giants 3.9.27

The weather for the day so far had been clear, sunny with no wind but all that changed at 2pm when the Senior game started. It poured. The ground surface quickly became very slippery and the centre turning into a mud patch. The standard of play was poor from both sides due to the terrible conditions – The Blues leading by a point 1.3 to G.W.G 1.2 at quarter time. The rain continued throughout the second quarter and it was G.W.G. who went into the long break leading by a point 2.4 to the Blues 2.3.

The rain cleared after half time and the Winchelsea Blues stood up and took control of the game. They kicked 3 goals 4 points allowing the Geelong West Giants a solitary point in the third quarter, and went on with a great display in the conditions during the last. Great effort Blues giving Coach Christian Shaw his first win against the G.W.G. and on their home ground, with a substantial injury list as well.

#### GOALS:

Leigh Ellis 4, Ed Smith 4, Jordan Huff 2, Fin Parish 1, Caleb Brown 1

#### BEST:

Ed Smith, Jonty Scott, Luke Henry, Tavae Sauni, Lachie Gemmill, Tom Moloney

# GO BLUES!



## Winchelsea and District Historical Society

[facebook.com/Winchelseaanddistricthistoricalsociety/](https://facebook.com/Winchelseaanddistricthistoricalsociety/)

### Winchelsea Street Names



#### ORCHARDS ROAD

Pioneers of the area. Family had property on the road.

Alfred Orchard, Boer War 1900.

### VET in senior secondary schools a popular choice

Victoria has been named the only Australian state to increase its number of school students in Vocational Education and Training.

Latest figures from the National Centre for Vocational Education Research show students in VET in secondary schools rose 1.1 percent to 52,350 last year in Victoria. Nationally, numbers were down by 3.3 percent. The only other jurisdiction to record an increase was the Northern Territory.

Our secondary school students get tailored advice to consider whether VET is right for them. They complete a personal Morrisby career diagnostic profile, receiving subject and career counselling before choosing their senior secondary pathway.

The VCE Vocational Major is a new course within the VCE that sees students pursue their career goals while building skills for work and life. The curriculum includes literacy and numeracy skills, work-related and personal skills, and practical experience in one or more industries through VET.

While every VCE Vocational Major student does VET, any VCE student can include VET in their program.

For more information about the changes to senior secondary education, visit [vic.gov.au/oneVCE](https://vic.gov.au/oneVCE)

Opportunity for Victorian students to retrace footsteps of Australian men and women on Gallipoli

Secondary school students in Victoria will be given an opportunity to develop a deep understanding of the Anzac legacy and Australia's connection to Türkiye with the 2023 Premier's Spirit of Anzac Prize competition.

Minister for Veterans Natalie Suleyman today announced the opening of the prize - an annual award program for Victorian students in Years 9 to 12.

Ten students will be selected to embark on an unforgettable journey to battlefields and commemorative sites in Türkiye, retracing the experience of Australian men and women at war on the Gallipoli Peninsula and surrounds and learning about the making of the Anzac legend.

The Spirit of Anzac Prize also offers students the opportunity to participate in a unique educational program that fosters understanding and appreciation for our nation's Anzac spirit.

By entering the competition, students can convey their interpretation of the Anzac spirit via written, creative, or digital formats.

To apply or find out more about the prize, visit [vic.gov.au/SOAP](https://vic.gov.au/SOAP).

### Applications open for Teaching Excellence Program 2024

The State Government is supporting and developing teachers' skills through our Teaching Excellence Program.

500 of our best and brightest teachers will take part in the 2024 TEP, a year-long training program for teachers to explore unique ways of making learning meaningful for their students.

TEP is open to teachers with at least 3 years' experience, and involves conferences, subject specific study days, learning communities for participants to share their ideas, as well as self-directed projects to test their new and improved skills.

During the program, Master teachers - highly-trained specialists in the key learning areas of Arts, English, Humanities, Languages, Technologies, Science, Mathematics and Health and Physical Education - also provide expert guidance and wisdom to participants.

Once graduated from the program, teachers can apply for a Teaching Innovation Fellowship grant through the Academy to receive ongoing support and take their learning even further.

To apply or find out more about TEP, visit [academy.vic.gov.au/professional-learning/teaching-excellence-program](https://academy.vic.gov.au/professional-learning/teaching-excellence-program)





# Winchelsea Historical Society

Hesse Street Winchelsea 1-4pm Wednesday, 10-3 Fridays

<https://www.facebook.com/Winchelseaanddistricthistoricalsociety>

## Margaret Reid

The Winchelsea and District Historical Society was formed when a meeting of like-minded residents was held in 1980.

The collection has grown over the last 40+ years and continues to grow with donations of photos and other memorabilia from the community. This is much appreciated and helps to preserve the changing face of Winchelsea and district.

Our collection includes photos (people, businesses, homes etc the list goes on), physical objects, clothing, Koenig aboriginal artefacts, books, maps etc etc. We are always looking for more to add to the current collection especially if there is a local connection.

So if you have a photo/s or small objects with that Winchelsea connection and are thinking of disposing of it, please contact us at the Historical Society.

On a more personal note, a bit about our membership. We currently have 12 members with 4 or 5 active members who regularly attend the history centre each Wednesday and Friday.

Our President, Sandra Jones, has lived in Winchelsea for 27 years and has been a member of the Historical Society for 25. She has also been involved with many community organisations including the Community Bank, Probus, Information Centre, Tourist and Traders and has been on a number of committees including Winchouse.

Sandra is a former teacher/artist, forming Riverlee Art Group. Her other interests include Family History and history in general, art and architecture and gardening.

Shirley Leak is a valuable member of our team. Most would know Shirley for her passion for the Winchelsea Football and Netball Club. As the Football Club historian, Shirley has a vast collection of football memorabilia which includes about 50 albums of photos and newspaper cuttings. She also enjoys collecting newspaper cuttings about local interests and events.

Shirley has also been involved with Lions Club, Landcare and Colac and District Netball Club. The Leak family have been in the district since 1848.

Lindsay Bennett, Vice President, was born in Winchelsea and is also a valuable member of the society and helps with the facebook page adding photos twice a week. He also has a wide knowledge of Winchelsea and the indigenous people of



the area. Lindsay has a wide range of interests including travelling and family history.

Margaret Reid, Secretary/Treasurer has lived and worked in Winchelsea all her life, attending the local school and then working in the school office until retirement 6 years ago. She has been involved with various community groups over the years including Repertory Society and Band Support Group.

At the history centre Margaret is currently checking, updating, collating and digitizing many areas of the collection. Margaret has enjoyed history with a special interest in family history, tracing her family back to the early 1600's. Her other interests are reading, gardening and travelling.

The remainder of our membership are "silent" members except for 2 – Trevor Green and Bruce Bartier who attend when they can and help out where needed.

The Centre is open on Wednesday afternoon (1-4pm) and Friday (10am-3pm).

To find out more about what the collection holds please call in and have a look around – you will be very surprised at what you will find!!

Our facebook page is well worth a look also.

More importantly, remember before you throw it out contact the Historical Society about donating it.

**OZ TREES NURSERY  
& TREE PLANTING SERVICES**

- Affordable seedlings—over 200 species
  - Complete plantation service—farm forestry, shelter, aesthetics
  - Deep ripping & mound ploughing. Rotary bed forming
  - Our experienced staff will help you select species for your site conditions and needs
- Also available—tree planting tools, milk cartons, plastic tree guards & bamboo stakes



569 Warrowie Rd. Colac  
P: 5233 6280 F: 5233 6393  
E: info@oztrees.com.au  
W: www.oztrees.com.au  
Open Monday—Friday  
9am—4:30pm

Phone OzTrees for professional advice,

**MRP  
Steelworx**

Matthew Partridge  
p 0418 672 334  
e mrpsteelworx@yahoo.com.au

**Welding Service**

- Onsite welding
- Farm maintenance
- Farm machinery & equipment repairs
- Cattle & sheep yards
- Custom built trailers
- Supply & install gates

**Plasterer  
& Painter**

Daryl Hecker

Domestic & Commercial  
Renovations & Repairs  
Suspended Ceilings  
Dustless Sanding  
New Homes  
Extensions



Ph 0419 194 799

*direct*  
**TEMPORARY  
FENCING**

FOR HIRE - SUPPLIED & ERECTED - 7 DAYS  
GEELONG - BELLARINE - COLAC - SURF COAST  
PHONE CAM 0417 310 800

**DownRyte Excavations**



- Excavations
- Drilling and Piling
- Rock Placement
- Tree and Stump Removal

Sean Hunwick  
Mobile: 0409 447 288  
Email: downryte@activ8.net.au

**CONCRETER**

Alister Aitken

**No job to big or small**

- Driveways - Carports - Crossovers - Footpaths - Sheds Slabs - Colored Concrete - Concrete sealing - Exposed Aggregate - & more -

Call or text for a no obligation free quote

Servicing our local Winchelsea & Surrounding Areas

alaitken.aa@gmail.com or Alister - 0411 871 950

A.B.N 47 228 574 460

**B & H Modifications**

**Bob Verity**



55 Stephenson Road  
Winchelsea 3241  
Ph: 5267 2467  
Mobile: 0411 610 678

**Industrial Sewing  
Machine Work**

Caravan Annexes, Trailer Covers,  
Shade Sails, Alterations and  
Repairs to  
Camping and Tents.  
Clear PVC Blinds  
Repairs to CLEAN Horse Rugs  
No Job Too Small  
Email: bobverity@southernphone.com.au

**WINCHELSEA  
CONCRETING**

• Driveways • Sheds • Decorative Concrete • Raft Slabs

**Robert Murphy**

☎ 0438 235 237

✉ winchelseaconcreting@outlook.com

**Knuckey's Winchelsea**

**Ph: 5267 2011**

Knuckey's have in stock a complete range of batteries to suit tractor, heavy machinery, cars, utes

The largest range of the best oil for your vehicles—**CASTROL**—  
'when only the best will do'

The largest range of V belts.  
A, B, C, D M Sections  
Bolts and nuts for all occasions  
Steel cut to size

# Winchelsea Churches



## Winchelsea Uniting Church

Hesse St, Winchelsea 3241  
uca.winchelsea@gmail.com  
0475 777 301  
Services 9.30am Sundays

## St John's Catholic Church

August Mass Times  
5pm  
August 5th, 12th, 19th, 26th  
Harding St, Winchelsea 3241  
Father Joseph Panackal  
0404598558

## St Thomas' Anglican Church

Barwon Tce, Winchelsea  
Rev'd Phil Jacobson  
stthomaswac@gmail.com  
0477 672 042

//

### Thought for the Week

"With healing,  
bones become stronger  
in the places that were broken.  
The same is true of broken hearts.  
Open yourself to the healing energy  
embedded deep in the universe  
and in God's heart."

**John Bader,**  
Former U/C Accredited

Geelong & South Western Rail Heritage Society Inc.  
IAN: A0049909K P.O. Box 1953, Geelong 3220.



## Christmas in Winter Sunday 20 August 2023

Enjoy an open fire, warm food and drinks, as we celebrate  
Christmas in July - in August! at Birregurra Railway Station

Birregurra Railway Station was constructed in 1877  
of Portarlington brick, with extensions added in 1890.  
It has a veranda along the passenger platform supported  
by cast iron posts. French doors and open fire places are a feature.  
Restoration works have been carried out over the past two decades  
and are ongoing. Volunteers assist to maintain the building and grounds  
and it costs several thousand dollars each year to do so.  
This event is to help raise funds to maintain the station.

Relax in front of a warming open fire whilst enjoying  
a two course hot dinner with drinks 3 pm and 7 pm (or later)!

You will be welcomed into the historic station building  
with a complimentary drink. Enjoy the open fire with nibbles and drinks.  
Around 5 pm, Hors D'oeuvres, a hot two course roast dinner  
and plum pudding dessert will be served.  
Additional drinks may be purchased from a cash bar at moderate prices.  
Please advise if you have any special dietary requirements.

**BOOKING AND COST: Adult \$75**

Bookings are to be made only on line at [www.trybooking.com/CKDDT](http://www.trybooking.com/CKDDT)

ENQUIRIES: Michael Menzies 0419 546 251,  
preferably between 7.00 pm and 9.30 pm weeknights.

## WINCHELSEA GOLF CLUB

Ph 5267 2660



Results: Mens

Mid-Week ending 9/8/23

1st - Max Bubb 34pts

2nd - David Lewis 32pts

NTP - donation to club



**NO MATTER WHAT  
YOUR PROBLEM, DODDS  
ELECTRIX CAN DEFUSE  
THE SITUATION.**

RURAL, INDUSTRIAL, COMMERCIAL, DOMESTIC  
PHONE 0438 887 360  
EMAIL: DODDSY@FASTMAIL.FM  
PO BOX 36 BIRREGURRA, VICTORIA 324  
REC: 17520 ABN: 64 581 250 880



**5234 6585 0417 385 984**

*For all your septic tank, grease traps  
and interceptor pits servicing.  
Locally owned and operated*

## Antique Repairs

By **Doug Burns** est. 1976

- All Furniture
- French polishing
- Carving
- Veneering
- Wood Turning
- Porcelain



*Unusual Requests Welcome*

180 Barwon Terrace, Winchelsea

**0428 672 704**



**Winchelsea  
Supermarket**

Trading Hours  
**Monday to Saturday**

8.30am to 7.30pm

**Sunday**

10am to 7pm

**Ph: 5267 2676**

29 Main St, Winchelsea

## TRENCHES & HOLES PTY LTD.



**PHILLIP ROBERTSON**

☎ **0427 672 945**

**WINCHELSEA**

- General Earth Works
- Driveways
- Trencher
- Kanga Loader
- Grader
- Excavator Work (3.5 & 6.5 Tonne)
- Tip Truck
- Rock Breaker
- Post Holes & Shed Footings

A.B.N 74006896898

**Scott McDonald**  
**0423 413 829**



**S.J.R AUTOMOTIVE**

ABN 942 483 846 39  
13 ALSOP DRIVE, WINCHELSEA VIC 3841



**Wadawurrung**  
Traditional Owners  
Aboriginal Corporation

Water Delivery

**WAZZA'S**  
WATER CARTAGE

Stainless Tanker Up to 22,000 ltr loads  
Barwon Water Registered

Domestic & Rural Water Supplies

Call Wazza

Mob: 0428 877 260

Email: wazza@wazzas.com.au Web: wazzaswater.com



**Café La Hoot**

have you tried  
'owl' coffee?

1 willis st [cafelahoot@gmail.com](mailto:cafelahoot@gmail.com) 0407 528 999



## WINCHELSEA FACEBOOK GROUPS AND PAGES

What's on in Winchelsea: Promoting Winchelsea Flyers, Local Events, Small Business	facebook.com/WhatsoninWinchelsea
Winchelsea FREE Free only	facebook.com/groups/winchelseafree
Winchelsea Community Information Australia positive discussion	facebook.com/groups/207538644446972
Winchelsea Classifieds 3241 For Sale only	facebook.com/groups/216942861684082
Winchelsea Lost and Found Lost Pets	facebook.com/groups/768187693217518
Winchelsea Op Shop	facebook.com/HospitalAuxiliaryOpShopWinchelsea
Winchelsea Shire Hall (Community Centre)	facebook.com/WinchelseaShireHall
Winchelsea Community House	facebook.com/winchelseacommunityhouse
Winchelsea Coronavirus Community Support Group	facebook.com/groups/2676957719207927/
The Green Winchelsea Residents	facebook.com/groups/515322772623126
Growing Winchelsea Inc	facebook.com/growingwinch
Winchelsea Star	facebook.com/TheWinchelseaStar
Winchelsea Movie Club	facebook.com/winchelseamovies
Winchelsea Community Market	facebook.com/100083362387611
Winchelsea Land and River Care Group	facebook.com/envirowinchelsea/
Upper Barwon Landcare Network	facebook.com/UpperBarwonLandcare
Winchelsea & District Historical Society Inc	facebook.com/Winchelseaanddistricthistoricalsociety/
Winchelsea Wildlife Shelter	www.winchelseawildlifeshelter.com/
SCARS - Surf Coast Animal Rescue Service	facebook.com/groups/415211698950674
Winchelsea Gardeners	facebook.com/groups/779878518703025
Winchelsea & District Historical Society	facebook.com/Winchelseaanddistricthistoricalsociety/
Winchelsea Repertory Society Inc	facebook.com/winchrep/
Winchelsea Globe Theatre	facebook.com/Winchelsea-Globe-Theatre-164790897641678
Winchelsea Uniting Church	facebook.com/winchelseaunitingchurch
St Thomas' Anglican Church	facebook.com/StThomasWinchelsea
St John the Baptist Catholic Church	facebook.com/pages/Winchelsea-Catholic-Church/101775670163180
Winchelsea Mainly Music	facebook.com/groups/668500343953191/
Winchelsea Health Club	facebook.com/WinchelseaHealthClub
Winchelsea Playgroup 2019	facebook.com/groups/551663435367031
Winchelsea Girl Guides	www.guidesvic.org.au/
Winchelsea/Modewarre Scouts	facebook.com/1stModewarreScouts
Winchelsea Fire Brigade	facebook.com/winchelseafirebrigade/
Winchelsea SES	facebook.com/groups/WinchSES
Country Women's Association - CWA Winchelsea Branch	facebook.com/pg/CWAWinchelsea/
Winchelsea Bowls Club	facebook.com/Winchelsea-Bowls-Club-533783333344345/
Winchelsea Blues Cricket Club	facebook.com/groups/8999049476/
Winchelsea Blues FC	facebook.com/WinchelseaFNC/
Mel's Dance Studio	facebook.com/melsdancecentral
Winchelsea Kyokushin Karate Club	facebook.com/winchelseakyokushin
WYLD Winchelsea Youth Leisure and Drop in	facebook.com/groups/569737570027065/
Lions Club of Winchelsea	facebook.com/LionsWinchelsea
Winchelsea Probus	facebook.com/893535194971083
Winchelsea Golf Club	facebook.com/winchelseagc/ facebook.com/groups/1324943804676697

## Call for First Peoples to oversee treaty negotiations

Victoria's First Peoples are invited to nominate for the Treaty Authority to oversee Treaty negotiations between State Government and Aboriginal Victorians.

The independent panel appointed to recruit Treaty Authority members is seeking nominations for five First Peoples.

The 'independent umpire' to ensure a fair treaty process, the Treaty Authority was established under the Treaty Authority Agreement to facilitate negotiations and resolve any disputes.

In May, an independent panel was appointed by the First Peoples' Assembly of Victoria and the State Government to oversee the selection process of Treaty Authority members. The panel includes Karinda Taylor, Eddie Cubillo, Marcus Clarke, Richard Wynne, and Auntie Vicki Clark OAM.

A nation-leading institution, the Treaty Authority draws on international best practice, adapted for Victoria to ensure Aboriginal lore, law and cultural authority are observed and upheld.

Nominations for the five inaugural members of the Treaty Authority are now open and will close on Monday 28 August.

For more information on how to apply, or to nominate a candidate to be a Treaty Authority Member, email IndigCareers at [treaty@indigcareers.com.au](mailto:treaty@indigcareers.com.au)

## Giving children a voice for safer hospital care

The Victorian Government will introduce a new system to support young hospital patients and their carers to easily raise their concerns with health workers if they notice worrying changes in their child's condition.

The government today announced Safer Care for Kids, a new family-led project from Safer Care Victoria (SCV) to improve outcomes for children in emergency care.

Since the Government established SCV in 2017, its annual Sentinel Events Report has shared investigations and outcomes from tragic events in hospitals, providing recommendations to prevent similar events from ever happening again.

Every year, hundreds of thousands of children present to Victorian hospitals – and while the majority receive the best of care, SCV's work highlights rare instances where this is not the case.

This year's report showed an increase in notified sentinel events related to patient deterioration, particularly among children – and the report provides three key recommendations into the care of children, which the Government will deliver in full.

The report highlighted deterioration as the most significant factor contributing to paediatric sentinel events, and the recommendations will support clinicians to better recognise and respond to patient deterioration.

The new escalation system will be designed in close consultation with health services, and follows the

successful implementation of similar processes in other jurisdictions.

We know that parents know their children best and the escalation system will be available across the state, giving parents and carers an alternative pathway to raise concerns, if they feel they are not being listened to.

A virtual paediatric consultation system will also be introduced, which will provide 24-hour access to specialist paediatric experts and services. This will be particularly beneficial to smaller regional health services when treating acutely unwell children.

The third change will be the mandated use of standardised and age-specific charts whenever a child's vital signs are recorded. The standardised charts, known as the Victorian Children's Tool for Observation and Response (VICTOR), are already used in many Victorian health services to recognise and respond to clinical deterioration in children.

Safer Care for Kids will be implemented in partnership with families who have lived experience of sentinel events involving children, and in close consultation with health services across Victoria.

This year's Sentinel Events Report documented the total number of annual sentinel events have risen to 240 in 2021-22, up from 168 the previous year.

This was an expected increase in line with the growth of reported sentinel events since SCV was established in 2017 – which led to an improvement in reporting and a growing culture of transparency on safety risk issues and a willingness to learn from patient harm.

---

## Global Citizen International youth leadership summit for Melbourne next March

Young leaders from Australia and around the world will come together with global entertainers in a major event in Melbourne to fast-track action on issues such as poverty and climate change.

Melbourne will host a Global Citizen international youth leadership summit in March next year. It will include a thought leadership conference bringing young leaders from across the Asia Pacific together with international students, philanthropists and leaders from

business, media, culture and politics.

It will culminate with a music event with artists to be announced in coming months. Global Citizen events convene the biggest names in music and entertainment alongside world leaders and prominent advocates. Previous events have included the participation of Chris Martin, Pharrell Williams, Katie Holmes, French President Emmanuel Macron, Canadian Prime Minister Justin Trudeau and Malala Yousafzai.

The summit will provide an international platform to highlight Melbourne and

Victoria as Australia's knowledge capital and premier global study destination.

There are more than 140,000 international students from 160 countries studying in Victoria, making Melbourne the most diverse student city in the world.

Headquartered in New York and with its Oceania team based in Melbourne, Global Citizen works to defeat poverty, demand equity and defend the planet in partnership with young leaders, government and business.



## Monitoring of salinity levels in Barwon River at Winchelsea

Corangamite Catchment Management Authority, as the statutory manager of the Lough Calvert Drainage Scheme, commenced releases from the Scheme on 21 July 2023.

Releases commenced at a conservative 6ML/day to enable the wetting of the channel, infrastructure to be tested and the gauges to be calibrated.

The outlet flows were gradually increased across the week, and kept below the levels that would trigger any concerns with salinity at Winchelsea.

Rain during the first week caused inflows into Lake Colac to increase and in response the Corangamite CMA increased releases to maintain lake levels while avoiding downstream impacts. This decision successfully maintained the Lake level across the weekend.

Corangamite CMA has a water quality monitoring plan in place, with numerous water quality gauges that measure salinity, flow, and water level at Lake Colac, along the drainage channel and downstream along Birregurra Creek and the Barwon River.

Last Monday, the gauges along the Barwon River at Kildean Lane and Winchelsea showed that salinity was increasing, and the outlet flows were subsequently decreased.

The Corangamite CMA further reduced releases to mitigate this increase in salinity at Winchelsea, whilst managing for downstream erosion that could result from sudden changes in flows.

Wormbete Creek and other waterways that flow into the Barwon River are contributing to high levels at Winchelsea. Site monitoring this past week at Wormbete Creek showed salinity levels above 5300 EC. Corangamite CMA is now continuing to monitor salinity in Wormbete Creek and other nearby waterways to understand how these streams contribute to salinity changes in the Barwon River at Winchelsea.

The salinity level at 9am on Monday 7th August had reduced to 2269 EC at the Barwon River at Winchelsea.

For the complete newcomer to lawn bowls, looking for a sporting activity that promises much fun and enjoyment with a competitive element, then the friendly, welcoming atmosphere of our Bowling Club is be the place to be.

**Ph 5267 2241**

**[Facebook.com/Winchelsea-Bowls-Club-53378333344345/](https://www.facebook.com/Winchelsea-Bowls-Club-53378333344345/)**

### M & L DRAYTON PLUMBING SERVICES

REG No 24356 C/A No C02594

- Domestic and Rural Plumbing
- Roofing
- Sewerage & Septic
- LPG & Natural Gas Connections
- Motorised Drain Cleaning
- Backhoe Hire

**Phone Mark 5288 7244**  
PO BOX 98 WINCHELSEA 3241  
**Mobile 0428 520 142**



## Winchelsea Land and Rivercare

First Saturday of each month 9am – 10.30

**Planting time - come and give a hand!**

Meet at Guye Reserve, Barwon Terrace

**Come and join us, all helpers welcome**

Winchelsea *mel*



MEL'S DANCE CENTRAL

# MID-YEAR DANCE ENROLMENTS

**! NOW OPEN !**

FOR ALL AGES PRE-SCHOOL - ADULTS

Jazz - Theatrical Tap - Contemporary  
Hip-Hop - Classical Ballet

[www.melsdancecentral.com.au](http://www.melsdancecentral.com.au)




All your caulking & waterproofing needs

- Bathrooms (files, mirrors, vanities, bathtubs, shower)
- Kitchens • Flooring (skirtings, files, floorboards)
- Splash Backs • Pool Joints • Brick Work
- Expansion Joints

Phone/Text/Email: [luke@westcoastsealants.com](mailto:luke@westcoastsealants.com)



**LUKE BATH**  
CAULKING CONTRACTOR

0406 845 098  
[westcoastsealants.com](http://westcoastsealants.com)  
PROVIDING QUALITY WORK SINCE 1995

52672192 **R & K Creative Framing**  
for all your framing needs

free quotes  
pension discount  
specialist in Age & Disability Modifications

Ray & Kim Jansen  
10 Witcombe st  
Winchelsea 3241  
0414672192

Ray The Home  
Maintenance HANDYMAN  
abn 47928623462



**mainly music**  
est. 1990

Fun, Interactive music sessions for pre-school children (0-4 y.o.) and parents/caregivers

**When:** Mondays from 10 to 11 am  
(runs during school terms)

**Where:** St Thomas' Hall  
25 Barwon Tce.

To Enquire ring: **0407838256**


*All About*

## Mowers & Chainsaws

Repairs to all makes and models of ride on mowers, domestic mowers, pumps, chainsaws, brushcutters and small engines.

Trading Hours: Mon - Fri 8am - 5pm Saturday 8am - 12 noon

**5267 2266** Cnr Princes Hwy & Lennox St Winchelsea  
[www.allaboutmowers.com.au](http://www.allaboutmowers.com.au)  
[accounts@allaboutmowers.com.au](mailto:accounts@allaboutmowers.com.au)

**GUIM DESIGNS**  
**CARPENTRY**

- DECKS - SAUNAS
- FLOORING - PERGOLAS
- WEATHERBOARDS
- HORSE SHEDS
- CLADDING - FENCES

ALL THINGS TIMBER AND MORE...

INSTAGRAM [guim\\_designs](https://www.instagram.com/guim_designs)

CALL PAT ON  
**0401 232 674**



## Winchelsea Community House and Shire Hall

Hours: Monday-Friday 9.00am -2.00pm

Address: 28 Hesse Street, Winchelsea

Phone: 52672028

[www.winchhouse.org.au](http://www.winchhouse.org.au)

Email: [reception@winchhouse.org.au](mailto:reception@winchhouse.org.au)



### Term 3, 2023

#### Basic Barista/Coffee Making Skills

Coffee 101— Learn all the basics in making a superb cup of liquid gold. Gain some hands on experience for hospitality or simply to grow your skills for your coffee machine at home. Café Skills short 4 session course.

Participation Certificate on completion

When: Fridays 28/7, 4/8, 11/8 and 25/8 10am-12 noon

\$50 for 4 weeks, Winchelsea Shire Hall Kitchen

Bookings essential to [reception@winchhouse.org.au](mailto:reception@winchhouse.org.au)

#### Sound Healing Sessions

When: Wed 16th August & Thur 14th Sep

7.30pm-8.30pm, Winchelsea Shire Hall Space

\$40 per session, Bookings now open

Please call Vicki on 0400 149 749

#### Chatty Café

When: Friday mornings 10.30am-12 noon

Winchelsea Shire Hall Space

No bookings required

We will have our Chatty Café Volunteers present to welcome you.

#### Crochet Group

When: Alternate Saturday afternoons

1.30pm, Winchelsea Community House Space

\$5 per session

Next session: Saturday 26<sup>th</sup> August, 2023

#### Experienced Tai Chi

When: Friday mornings 9.30am-10.30am

Winchelsea Community House Space

\$10 per session

#### Knitting Group

Come along and learn to knit or bring your knitting project and come and chat with others.

When: Thursday mornings, 10.30-12 noon

Winchelsea Community House

#### Singing Group

When: Fortnightly on Wednesday afternoons

4.45pm-6.00pm, Winchelsea Shire Hall Space

\$5 per session. Under 16 Free

Next session: Wednesday 23<sup>rd</sup> August, 2023

#### Power Saving Bonus

Have you claimed your power saving bonus under the current round which opened on March 23<sup>rd</sup>.

We are here to assist you with this \$250 claim.

Bring your power bill (all pages) and bank a/c details.

Community Houses such as ours provide programs and activities to learn new skills, brush up on your existing skills and more than anything to connect with others in your community and reduce social isolation.

New skills may help you with employment and build your confidence to in turn help others. Activities such as singing and sound healing help your mind and reduce any unwanted stresses. Have a think about doing something for yourself and join in our activities.

## AFS BOOKKEEPING



"Your local bookkeeper"

Bookkeeping  
Administration  
Payroll  
BAS Services  
Xero / Myob  
Reckon / Quickbooks  
Registered BAS Agent

Angelique Snetselaar

0456 077 485

info@afsbookkeeping.com.au  
www.afsbookkeeping.com.au



# SOUTHERN GRAIN STORAGE PTY. LTD.

AG SUPPLIES FERTILISER GRAIN STORAGE SEED CLEANING

(03) 5267 2351



5234 6585 0417 385 984

For all your domestic & stock water.  
Also available for road and civil construction  
Local owned and operated.

**Kyeema**  
Rural Fencing Pty. Ltd.  
Jason Armstrong & Jay Hawker  
1080 Prices Lane, Ombersley, Victoria, 3241  
0419 565085 (Jason)  
0416 585817 (Jay)  
kyeemafarm@kyeemafarm.com.au  
Also incorporating domestic and rural tree trimming services.



## Your Taxation &

## Superannuation Specialists.

Winchelsea

5267 2673

www.surftax.com.au

vent1g10064

## The Little Laundry

- Standard size load washing/drying clothes, next day service
- Free pick up/delivery 5km radius IGA
- Blanket washing (no animal bedding please)
- Ironing available
- Other options and deals available

Melissa 0488 444 351

## CARPENTRY SERVICES

Decks - Pergolas - Carports  
Home Repairs - Maintenance  
Renovations

**SURF COAST & OTWAY CONSTRUCTIONS**

Phone Lachie - 0438 477 274

## Simco Plumbing and Gasfitting

24/7 Emergency service Ph:0400643976

- All General Plumbing and Gasfitting
- Roof and Gutters, Hot Water service changeover
- Split Systems, Air Conditioning and Wood Heaters
- Irrigation, Septic and Treatment plants
- Excavation, Bobcat and Tipper
- Rain water Tank installation
- Renovations and Extensions
- Gas conversions and servicing

Simon McGillivray

Lic:109610. Free quotes, Fast and friendly service

WINCH WEBSITES  
WEB SOLUTIONS SIMPLIFIED.

# WEBSITES

GROW business  
INCREASE reach  
SAVE time



Find out what a website could do for you

winchwebsites.com.au

04 887766 20

## DAVIC AG

## CONTRACTING AND EARTHMOVING

For all your harvesting needs

Mowing, raking, round bailing, paddock prepping, spreading and sowing

Call Dave on **0417 579 973** Bamba

# New Residential Nature Strip Policy and Guidelines for Surf Coast Shire



Council's Residential Nature Strip Policy and Guidelines give residents clear directions about permitted uses, such as:

- Approved surface treatments
- Plant heights
- Growing of edible plants
- Installations
- Maintenance responsibilities

Some examples include:



Well-kept grass and modest plantings are preferred for their environmental benefits. They also have a cooling effect and help soften streetscapes. Additional plantings are not permitted in areas within the Bushfire Management Overlay.



Mulch is permitted (except in areas within the Bushfire Management Overlay) but should not take up the entire nature strip.



Hard, impervious surfaces such as gravel, pavers and artificial grass are no longer permitted as they lead to more stormwater run-off and materials being washed into waterways.



Residents are required to maintain nature strip grass and any plants, excluding street trees, which are solely Council's responsibility.

View the Residential Nature Strip Policy and Guidelines at: [surfcoast.vic.gov.au/NatureStrip](http://surfcoast.vic.gov.au/NatureStrip)

## The policy and guidelines:

- Will not be applied retrospectively, however we may direct a resident to remove any structure or planting that is a safety risk.
- Differ between areas that are inside and outside of the Bushfire Management Overlay.

Residents wishing to undertake works varying from the Residential Nature Strip Guidelines and Policy will need to apply for a permit from Council.



Located at 36 Main Street, Winchelsea 3241

For any enquires or bookings please contact the clinic on 5292 8028.  
Or visit our website: [www.winchmc.com.au](http://www.winchmc.com.au)

### Opening Hours:

Monday - Friday 8:00am - 5:00pm

(Monday Evening Clinics available and selected Saturdays)



Our clinic accepts online bookings via the app called HotDoc.  
Download the app on the App Store or Google Play or head to our website.

## NATURAL GAS CONNECTIONS

M. & L DRAYTON  
PLUMBING SERVICES

YOUR LOCAL LICENSED

- PLUMBERS (24356)
- GAS FITTERS
- GAS CONVERTERS
- CARBON MONOXIDE TESTING

MARK 0428 520 142



Water Supply Specialists

WATER SOLUTIONS

74 Dennis Street, Colac  
5231 1861



ALL THINGS WATER:

- PUMPS - PIPES
- FITTINGS - TANKS
- POOL CHEMICALS
- IRRIGATION
- WATER PURIFICATION
- SOLAR - REPAIR





**Moriac Veterinary Clinic**

**0447 781 089**

**PHONE 24 HOURS**

784 Hendy Main Road Moriac

info@moriacvet.com

www.moriacvetclinic.com.au

**HOURS // Monday - Friday: 8am - 5pm**

Commercial | Industrial | Domestic

**HAMILTONS**

**Truck & Bobcat Hire**

**Give Aaron a Call**

**0438 438 623**



**MCGREGOR  
PROJECT SERVICES**

**Winchelsea  
Local Resident &  
Business**

Contact:  
Cam McGregor  
Production Tree Nursery

Ph: 0437 700 754

Services  
offered

  
**Production**

- Agricultural/horticultural plantings (natives/exotics) for bulk windbreaks, screenings, driveway features.
- Irrigation – Full service – Commercial/Industrial/Domestic
- Revegetation services – agricultural/roadways/excavation sites/rail/civil
- Drainage Infrastructure – wetlands, matting, fabric
- Consulting
- Maintenance – contract/Ad hoc
- Contract tree/plant growing



**SIMPLE STORAGE SOLUTIONS**

- Personal & Business Storage
- Boat, Caravan & Vehicle Storage
- High Security Premises
- Individually Alarmed Units
- Electric Gate Access
- 7 Day Access & CCTV

**YOUR STORAGE PROBLEMS SOLVED**

**5267 3116**

6 ALSOP DRIVE, WINCHELSEA 3241

**HESSE  
RURAL  
HEALTH**

**Volunteers Required**

Volunteers are one of Hesse's greatest assets, playing a vital role to enhance the quality of Hesse services & client experiences.



- Bus Driver
- Outings Assistant
- Resident Visitor
- Events & Activities Assistant
- Group Wheelchair Walkers
- Appointment Escort
- Social Support Activities
- Gardening - Winchelsea
- Hospital Auxiliary Member
- Consumer Advisory Committee
- Marketing & Fundraising Committee

For more information please contact Hesse on  
(03) 5267 1200 or via email reception@hesse.vic.gov.au



**Landcare  
Victoria**

- Domestic and Commercial hire equipment
- Industrial welding gas
- Digging and Earthmoving equipment
- New trailers and trailer repairs
- Firewood
- Stockists of Royal Oil Lubricants products
- LPG for domestic and commercial requirements

Give Chris and the Team a call on **5232 1177** or email [info@colachire.com.au](mailto:info@colachire.com.au)

[www.colachire.com.au](http://www.colachire.com.au)

101 Wallace St Colac 3250





- ❑ LOG BOOK SERVICE
- ❑ AUTO ELECTRICAL
- ❑ TOWING
- ❑ AIR CONDITIONING
- ❑ CLUTCH & BRAKES
- ❑ TYRES
- ❑ WHEEL ALIGNMENT
- ❑ BATTERIES

## CAR, TRUCK REPAIRS & Roadworthys

**PH: 5267 3001**

**Mob: 0417 137 457**

**17 Alsop Drive**

## HESSE RURAL HEALTH



- Acute Care\*
- Urgent Care\*
- Residential Aged Care\*
- Community Nursing
- Dietetics
- Physiotherapy
- Occupational Therapy

- Diabetes Education
- Social Support Groups
- Counselling
- Home Care
- Health Promotion

\* services from Winchelsea only

[www.hesseruralhealth.com.au](http://www.hesseruralhealth.com.au)

P: (03) 5267 1200 E: [reception@hesse.vic.gov.au](mailto:reception@hesse.vic.gov.au)

**Winchelsea Towing**  
**24 Hour Accident and Breakdown Towing**  
**0418 535 402**



TANGO



Pet Grooming

**RONNIE.**

Winchelsea's  
pet groomer.

For appointments

**0436 008 989**

[tangopetgrooming@gmail.com](mailto:tangopetgrooming@gmail.com)

**R.A.K. DAVIS  
& SONS**

**CARTAGE  
CONTRACTORS**

**WINCHELSEA**

**SUPPLIER OF ALL QUARRY MATERIALS, TRUCK HIRE**

**CARTAGE OF GRAIN, LIME, GYPSUM & SUPER**

**LANDSCAPE & GARDEN SUPPLIES**

**56 WILLIS ST, WINCHELSEA**

**Ph – 5267 2094**

**Ryan – 0438 672 281**

**Email: [rakdavis@bigpond.com](mailto:rakdavis@bigpond.com)**

## Funeral Planning

*Working out what is best for you.*

Prepaid Funerals, Funeral Bonds, Pay-by instalments...

There are many options and its important to make the right choice.

Alyson Burchell will be available by appointment to answer any questions about funerals and planning ahead.



For more information or to make an appointment contact Sue on 5221 4788

Tuckers Community Office,  
Surf Coast Taxation Services, 22 Willis Street,  
Winchelsea

**First Tuesday of the Month,  
by appointment 10.00am - 12.00pm**

*Caring for families since 1883*

**Tuckers**  
Funeral & Bereavement Service  
*...for a life worth celebrating*

5221 4788  
[www.tuckers.com.au](http://www.tuckers.com.au)





# Watch your money grow 4.90%\* p.a.

Secure your savings and grow your money with a fixed 12 month term deposit rate of 4.90% p.a. - minimum investment from \$5,000.

A Bendigo term deposit may be just what you or your business needs to get the most from your money.

Call us on 03 5289 1787 and lock in your rate today.

Community Bank • Winchelsea & District 5267 3189

## **B** Bendigo Bank

\*Rate valid at 11/08/2023 and is subject to change, interest paid at maturity. Terms, conditions, fees and charges apply. This information does not consider your financial objectives or needs. You should consider whether this product is appropriate for you. Terms and conditions and TMD available on our website. Bendigo and Adelaide Bank Limited ABN 11 068 049 178 AFSL /Australian Credit Licence 237879. (A1732400-1732177) OUT\_30791292, 09/08/2023

## **M&B WOOD PLUMBING**

Call Matt - 0418 319 357  
[mbwoodplumbing.au](http://mbwoodplumbing.au)

### Servicing Winchelsea & surrounds

- General maintenance & blocked drains
- Gas fitting & hot water service upgrades
- New homes & renovations



## GREAT Bundle Deal on Bosch Hot Water... FROM ELGAS

Buy any Bosch Bluetooth continuous flow hot water model - 16Litre, 20Litre or 26Litre and Receive \$100\* in Elgas bonus LPG gas credits



\*For more details: [www.elgas.com.au/appliances/bosch-aptflow-16-20-26-lpg-bundle-sale](http://www.elgas.com.au/appliances/bosch-aptflow-16-20-26-lpg-bundle-sale)

AND... for new customers, an additional \$80 WORTH OF LPG GAS CREDITS\*\* when you open a new LPG Gas account with Elgas



\*\*Further details can be viewed at [www.elgas.com.au](http://www.elgas.com.au)

Ask about the Elgas Easy Payment Plan - 12 months interest free\*\*\* on selected LPG appliances

\*\*\*Further details can be viewed at: [www.elgas.com.au/epp](http://www.elgas.com.au/epp)

Automatic tanker gas bottle refill OR gas bottle exchange refill is available for home or business....

Call today or visit our website for our many customer benefits and latest offers

**131 161**  
[www.elgas.com.au](http://www.elgas.com.au)

**ELGAS**

## Winchelsea Men's Shed



For The Community

51 Hesse Street

Every Wednesday from 9:30am

New members always welcome

For more detail contact:  
 Ray Atkinson (Co-ordinator)  
 0407 839 139

or  
[winchmensed@gmail.com](mailto:winchmensed@gmail.com)

Need a job done?  
 Woodworking jobs,  
 furniture repairs, small jobs.  
 Drop in and talk to us.

Chiropractic - Remedial Massage - Myotherapy - Sound Healing - Breathwork

## Chiropractic care for:

Stress & Anxiety  
 Body Aches & Tension  
 Poor Sleep

Pain Management  
 Family Wellbeing  
 Health Longevity

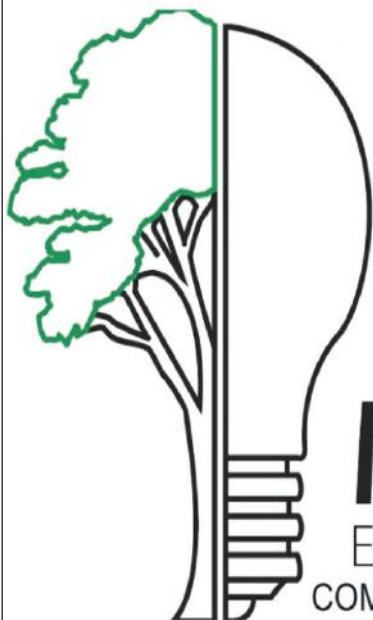


03 5267 2240 Shop 4/21 Hesse St Winchelsea



<https://onebodychiropractic.com.au/>





admin@mirneeelectricalsolutions.com

Angus Leigh: 0484139858

'THE ELECTRICAL EXPERTS'

**MIRNEE**  
ELECTRICAL SOLUTIONS  
COMMERCIAL | DOMESTIC | INDUSTRIAL

# WINCHELSEA LIONS CLUB

## PAPER RECYCLING

Paper depot rear of Senior Citizens Rooms  
Harding Street  
**NEWSPAPERS, MAGAZINES, PHONE BOOKS WANTED**



RAISING FUNDS FOR OUR TOWN & DISTRICT  
5267 2011 or 0408 520 606

## HESSE RURAL HEALTH

### Volunteers Required

Volunteers are one of Hesse's greatest assets, playing a vital role to enhance the quality of Hesse services & client experiences.



- Bus Driver
- Outings Assistant
- Resident Visitor
- Events & Activities Assistant
- Group Wheelchair Walkers
- Appointment Escort
- Social Support Activities
- Gardening - Winchelsea
- Hospital Auxiliary Member
- Consumer Advisory Committee
- Marketing & Fundraising Committee

For more information please contact Hesse on (03) 5267 1200 or via email [reception@hesse.vic.gov.au](mailto:reception@hesse.vic.gov.au)

### Winchelsea Men's Shed



For The Community  
**Men's Shed Kindling/Offcuts**  
Bags of Kindling/timber offcuts are available for pick up from the Men's Shed on Wednesday's from 9.30 to 2.30.

If you need a delivery made you can call Bill on 0438 083 373. The price for a bag of kindling is now \$7.00 (up from \$5.00).

#### Nesting Boxes

Bird or animal nesting boxes are available from The Men's Shed. These can be made to order. Call in on any Wednesday to have a chat.

## Winchelsea Taxis is now Surfcoast Taxis

Our fleet of vehicles are growing to all late models and we are covering an extended area including Winchelsea, Colac, Bannockburn, Inverleigh, Great Ocean Road and Geelong.

We have a fleet of 10 seater Maxi Vans, all with capacity to carry wheelchairs.

**Surfcoast Taxis Pty Ltd**  
All Bookings: 0408 325 992  
Fax: 5267 2699  
Email: [bannotaxis@gmail.com](mailto:bannotaxis@gmail.com)  
(Admin or Stan 0429 672 888)  
66A Batson Street  
Winchelsea 3241



Accounts NDIS provider. TAC, DVA etc

NDIS provider number 4050001044  
NDIS provider number 4050001048

Book your next ride with **smarHAIL**

Book Track Pay Rate

Download on the App Store GET IT ON Google Play

## Wightons Lawyers

Dispute Resolution & Litigation

Debt Collection

Property Law

Wills & Estates

Powers of Attorney

Business Law

Family Law

By appointment only

22 Willis Street, Winchelsea  
ph. 5221 8777

[www.wightons.com.au](http://www.wightons.com.au)



# Lupton BUILDERS

SPECIALISING IN QUALITY



REGISTERED Building Practitioner

- NEW HOMES
- ALTERATIONS
- CARPORTS
- BATHROOMS
- EXTENSIONS
- DECKS
- VERANDAHS
- WINDOW REPLACEMENTS
- RENOVATIONS
- PERGOLAS
- RE-CLADS

LEIGH LUPTON  
0438 840 104

CHRIS LUPTON  
0407 681 514

LEIGHLUPTON17@GMAIL.COM

Est. 1977

# Winchelsea Star



Since 1977

ISSN 2202-6851



9 772202 685002

## HF RICHARDSON

PROPERTY

Servicing all your real estate needs

Ken McDonald **0418 524 150**



Residential | Rural Lifestyle | Agricultural Farms



Charles Stewart & Company are leading livestock and real estate service providers covering Victoria's south west

	LIVESTOCK
Jamie McConachy	0418 522879
Peter McConachy	0408 522878
Matt Nelson	0428 315400
Gerard Bohan	0400 005541
Lachie Barclay	0438 346291
John Thornton	0408 526367
Dougal McIntyre	0439 575612
Ross Spitty	0419 539717

	REAL ESTATE
Michael Stewart	0418 520467
Daryl Osborne	0419 388341
Anthony McDonald	0418 593597
Gerard Bohan	0400 005541
Stephen Lugg	0417 556098
Josh Lamanna	0417 586032



Office  
56 Bromfield Street, Colac  
www.charlesstewart.com.au

## Green Lead Electrical

Connecting you to a greener future  
REC 23618

0467 097 101



## Servicing Geelong & the Surf Coast

Specialising in all residential electrical work including:

- Switch board & lighting upgrades
- Outdoor lighting
- Electrical safety checks
- Energy efficient LED lighting
- Ceiling sweep fans & ventilation
- Energy saving advice

Phone Martin Wilkinson:

**0467 097 101**

[greenlead@outlook.com](mailto:greenlead@outlook.com)

1132288-CG1B-14

# MGT BUILDING & CONSTRUCTION

NEW HOMES | EXTENSIONS | RENOVATIONS

Ph: 0409 433 687

