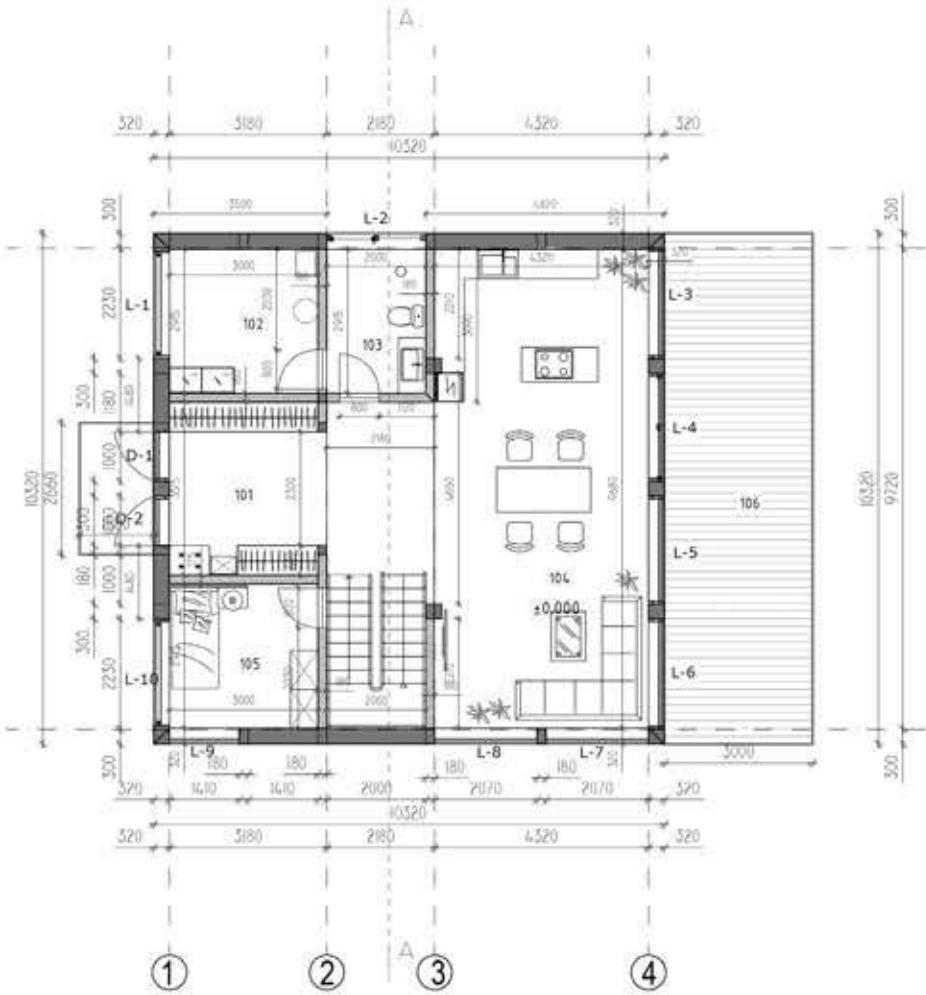






UAB Janolex is pleased to announce the introduction of a new category of wooden Fachwerk houses. This addition represents our commitment to combining traditional architectural excellence with modern innovation. Fachwerk, a classic European timber-framing technique, is renowned for its distinctive exposed wood beams and infill panels, creating structures that are both aesthetically striking and structurally robust. Our Fachwerk houses are designed to offer superior quality, durability, and timeless appeal, catering to those who seek both elegance and functionality in their homes. The main structure is made of high-quality glulam wood, ensuring enhanced strength, stability, and resistance to warping. This engineered wood not only reinforces the durability of the frame but also contributes to the overall energy efficiency and sustainability of the house.









Proven technology

Modern Fachwerk style

Strength and durability

Glued laminated timber

Bright, spacious interiors with top-quality windows

Large triple-glazed windows integrated into the building's structure

Precise craftsmanship and guaranteed quality

High-quality production according to "Janolex" standards

Eco-friendliness and sustainability

Lower carbon footprint

A++ Energy Efficiency

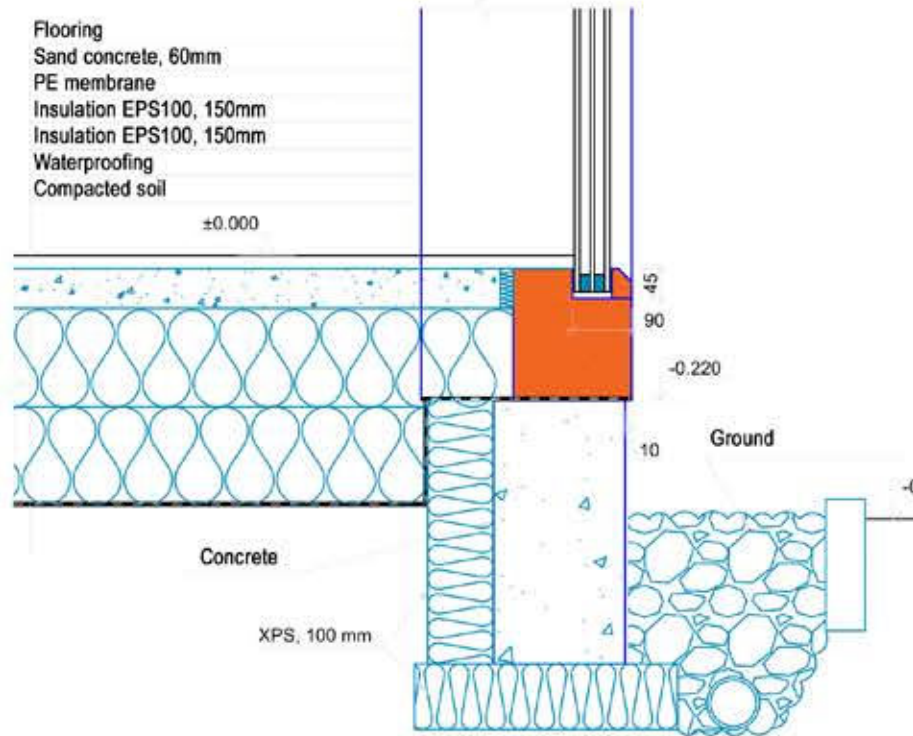
Optimal price for the highest quality

Prices range from 1350 €/m² to 1700 €/m²

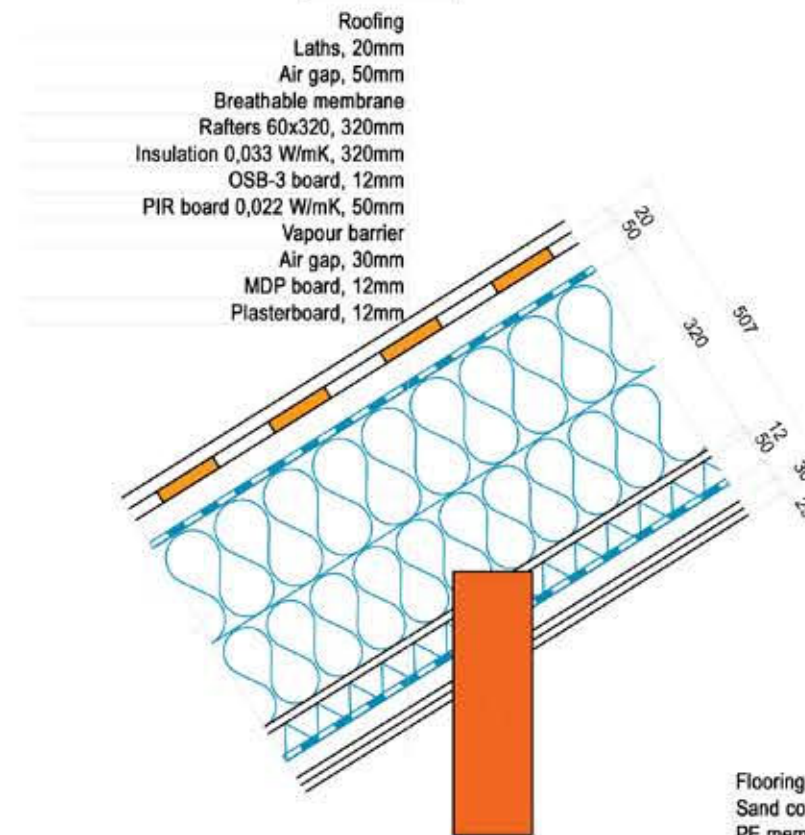
Customization options

Flexible interior layout

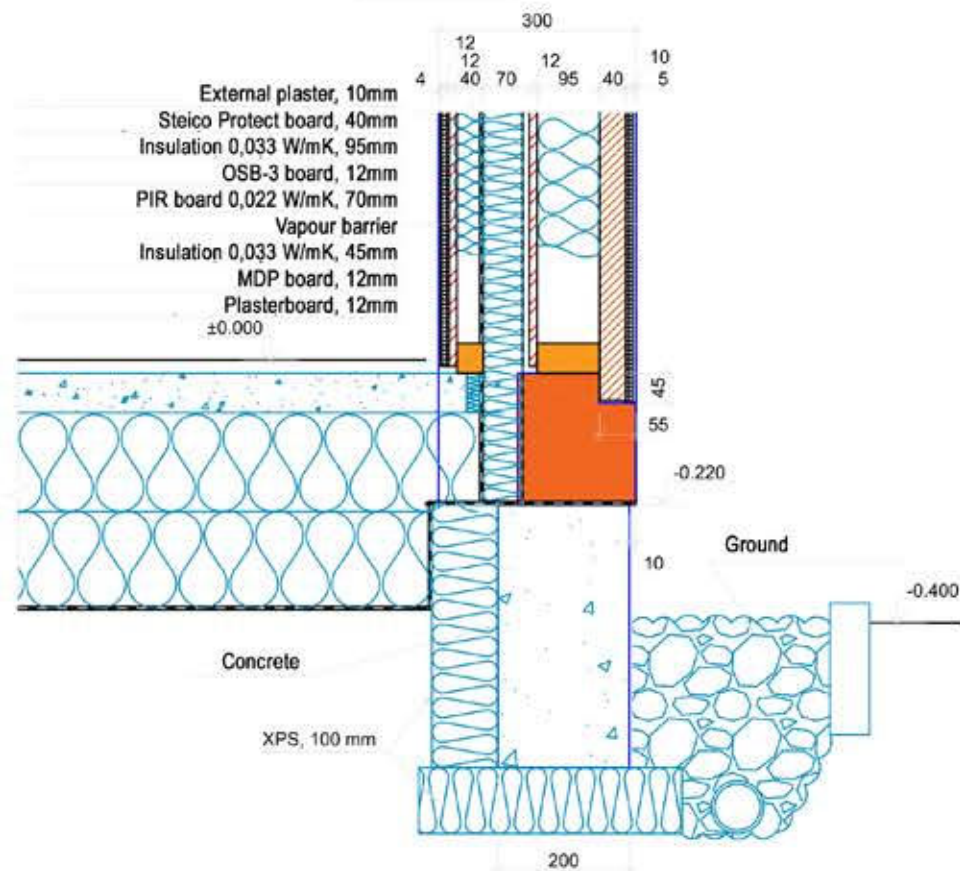
Wall detail



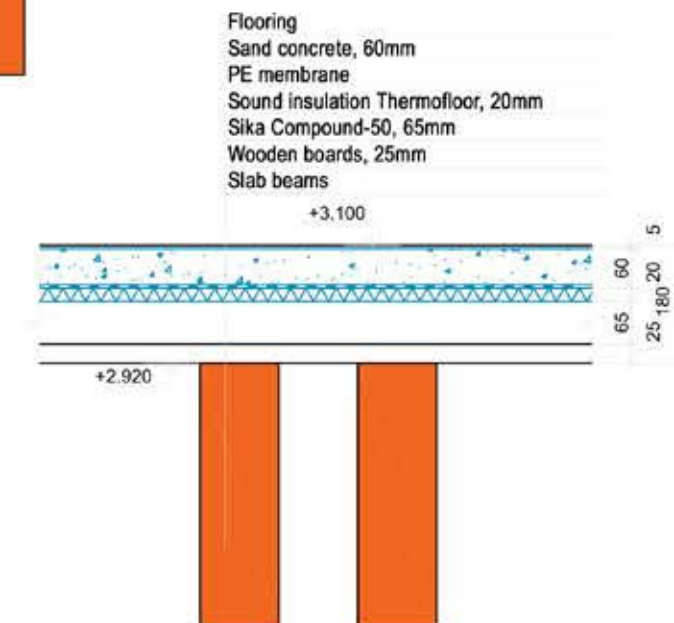
Roof detail



Wall detail



Slab detail



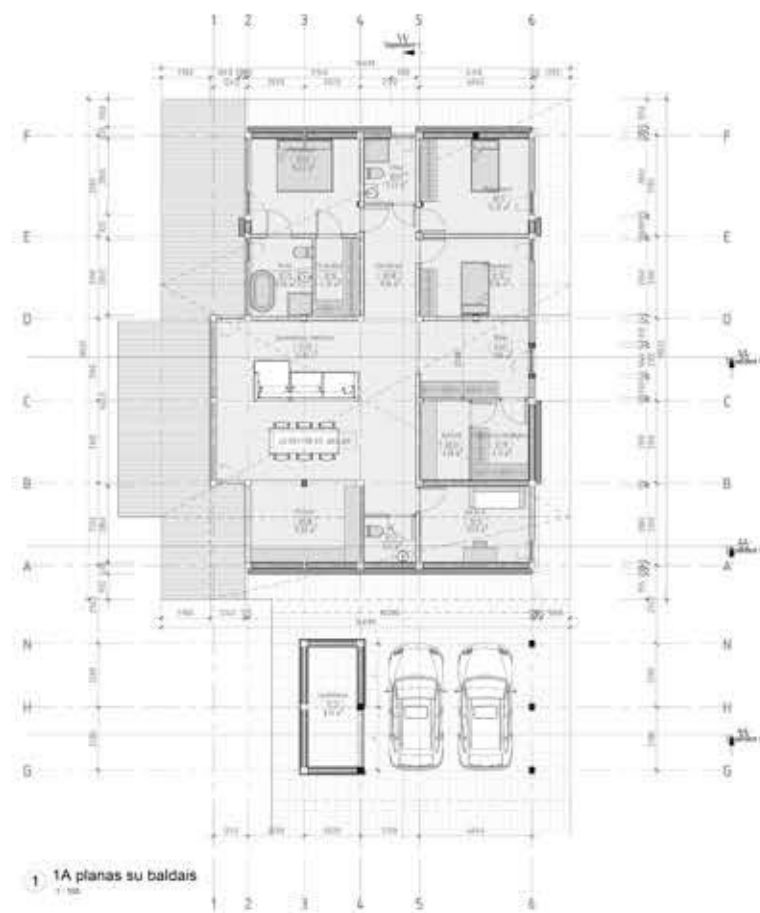


70 m²





160 m²



Let's be modern but still classic, proven technology.



Janolex
Ilgoji g. 54, Lindiniškės, 14181 Vilniaus r. sav.
www.janolex.com