

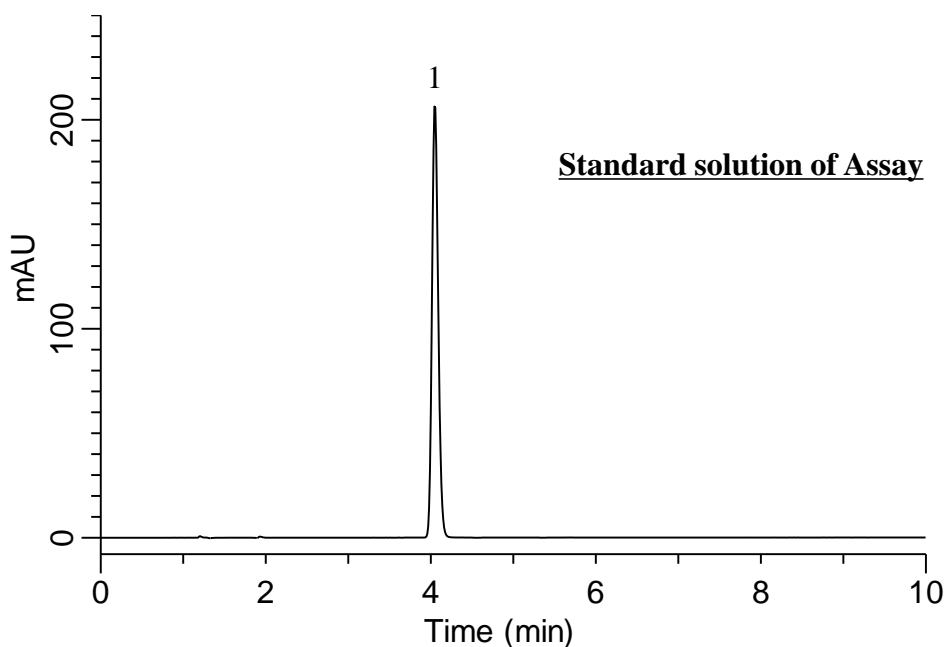
InertSearch for LC

Inertsil Applications

Analysis of Levetiracetam

(Under the Condition of USP42-NF37 1S, Levetiracetam Tablets)

Data No. LB636-0871



Conditions

System : GL7700 HPLC system
Column : InertSustainSwift C18
(4 μ m, 250 x 4.6 mm I.D.)
Column Cat. No. : 5020-
Eluent : A) CH₃CN
B) Buffer*
A/B = 8/92, v/v
Flow rate : 2.0 mL/min
Col. Temp. : 40 °C
Detection : UV 220 nm (PD7752 PDA Detector)
Injection Vol. : 10 μ L
Sample : Standard

Analyte:

1. Levetiracetam 350 mg/L

Symmetry factor : 1.26 (\leq 2.0)

RSD of the peak area (%) (n=6) : 0.19 (\leq 2.0)

* 1.4 g/L of monobasic potassium phosphate and 0.6 g/L of sodium 1-heptanesulfonate, adjusted with phosphoric acid to a pH of 2.8.

【NOTE】

Operating pressure often exceeds 20 MPa. In that case, the column will not be immediately unavailable, but its lifetime may be a little shorter.