



Natureworks MEGAFAUNA Reconstructions

info@natureworks.com.au

www.natureworks.com.au

07 3289 7555





Megafauna Reconstructions - Birds

BULLOCKORNIS - GENYORNIS NEWTONI

This was a large flightless bird that lived in Australia approximately 2 metres in height they vanished about 25,000 years ago.

It would have weighed about 200kg. It was one of the last of the giant mihirungs (or thunderbirds).

Natureworks produced this megafauna bird in 1992 for the Gondwana Rainforest Sanctuary exhibit in Brisbane Australia.

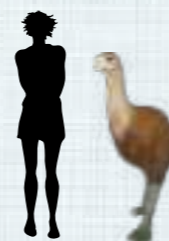


Bullockornis in rainforest diorama



Bullockornis survived until about 26,000 years ago

160246
Genyornis Newtoni
- Bullockornis
Extinct Megafauna Bird
L 159 x W 57 x H 174cm - 25.6kg





Megafauna Reconstructions - Birds

DROMORNIS MURRAYI
ALSO KNOWN AS THE "DEMON DUCK OF DOOM"

THE DEMON DUCK OF DOOM STANDS AT ABOUT
L 120CM X W 60CM H 200CM



Dromornis Murrayi - in production





Megafauna Reconstructions - Birds

DROMORNIS MURRAYI
ALSO KNOWN AS THE "DEMON DUCK OF DOOM"

Natureworks dromornis murrayi
reconstructions shown in workshop



DROMORNIS MURRAYI IN LIFE

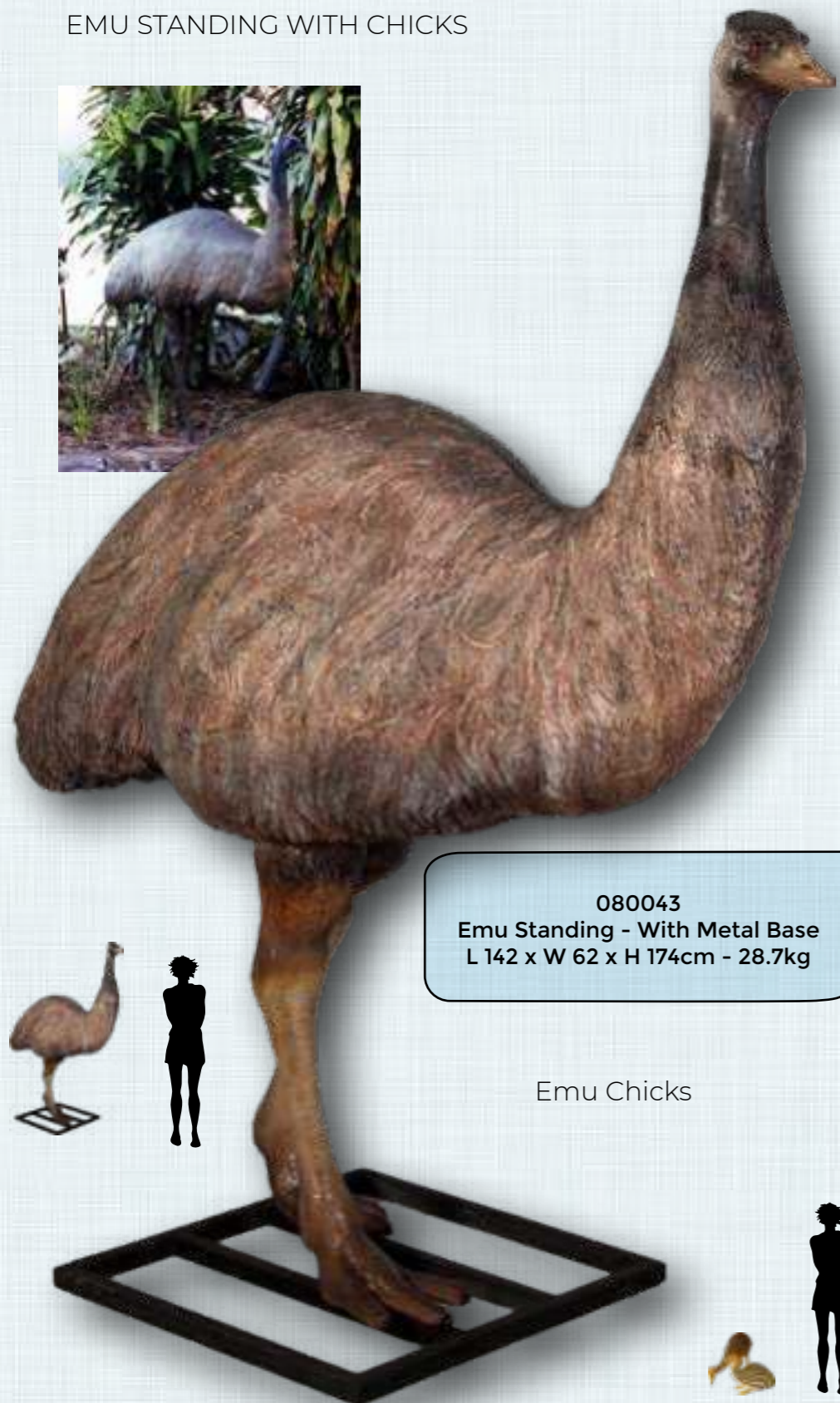
This model represents the best estimation of the life appearance of Dromornis murrayi. It has been made to the proportions of the largest complete bones available, which we now know belonged to male individuals. Therefore the model specifically represents a male. Note the unusual ornamentations at the front of the beak. These were probably used as sexual display to mates.



Megafauna Reconstructions - Birds

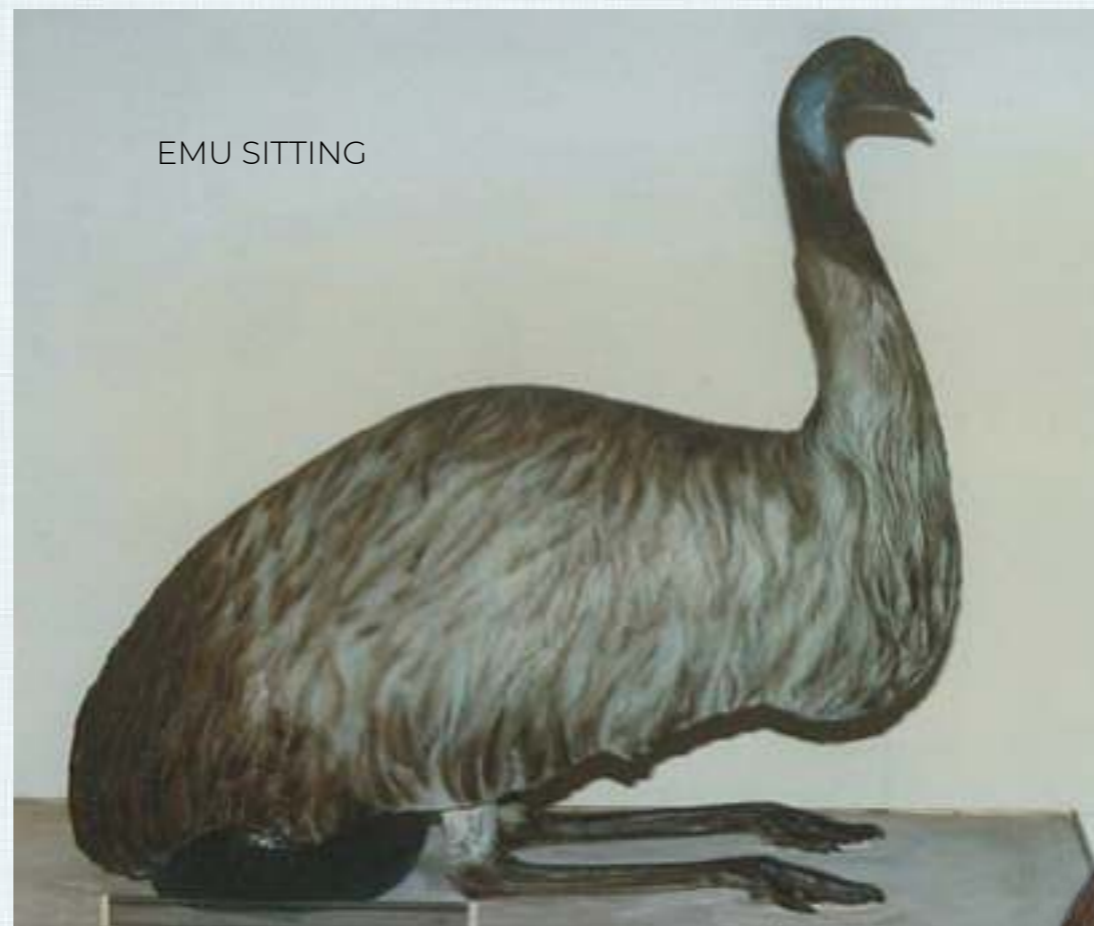
GROUND DWELLING BIRDS

EMU STANDING WITH CHICKS



080043
Emu Standing - With Metal Base
L 142 x W 62 x H 174cm - 28.7kg

Emu Chicks



EMU SITTING

NW.Emu R
Emu resting
L 142 x W 62 x H 120cm - 20kg

080156
Emu Chicks - set of 2
L 50 x W 33 x H 19cm - 1.9kg



Y.3360
Emu Standing - With Metal Base
L 142 x W 64 x H 179cm - 28kg

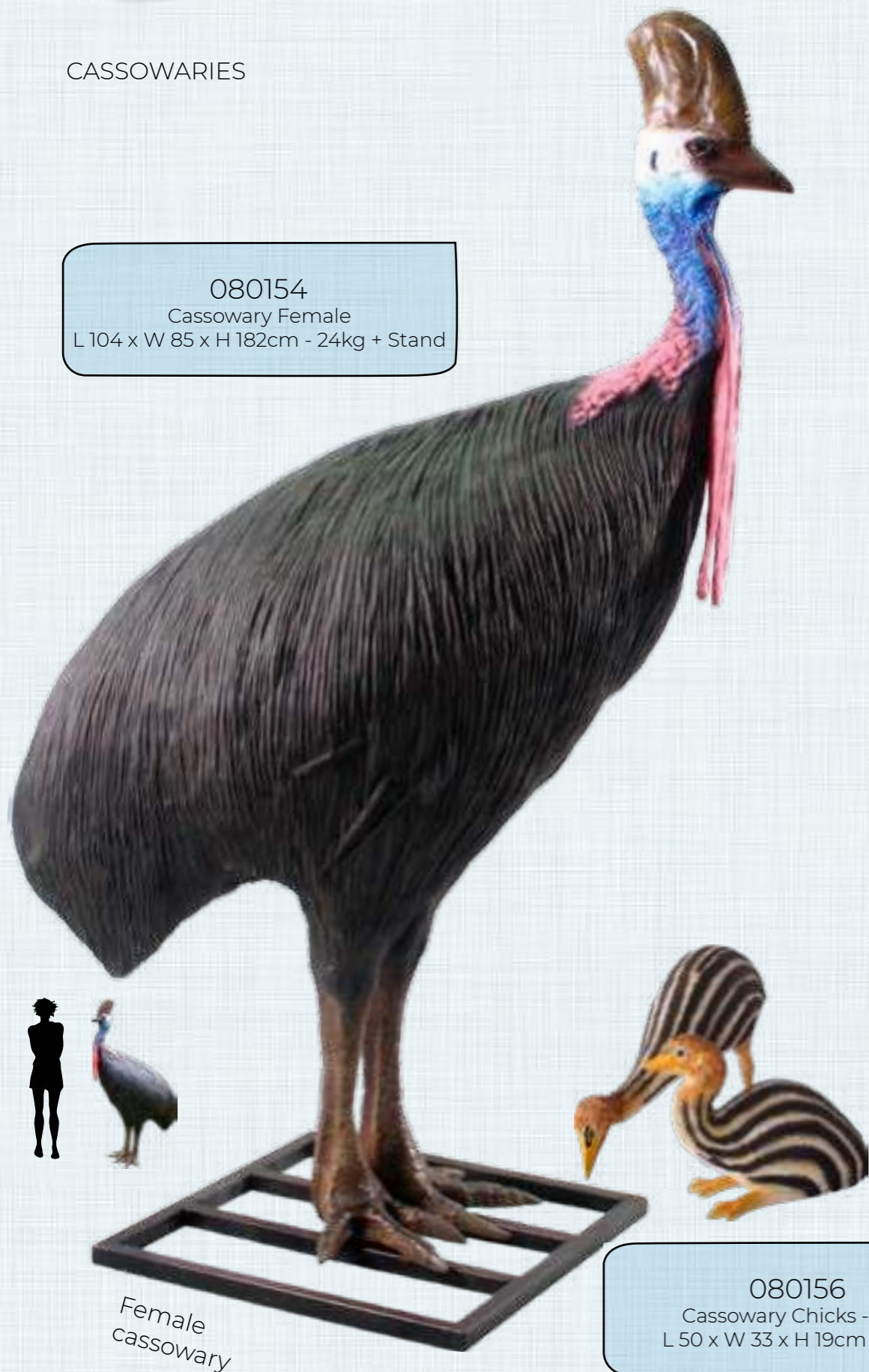




Megafauna Reconstructions - Birds

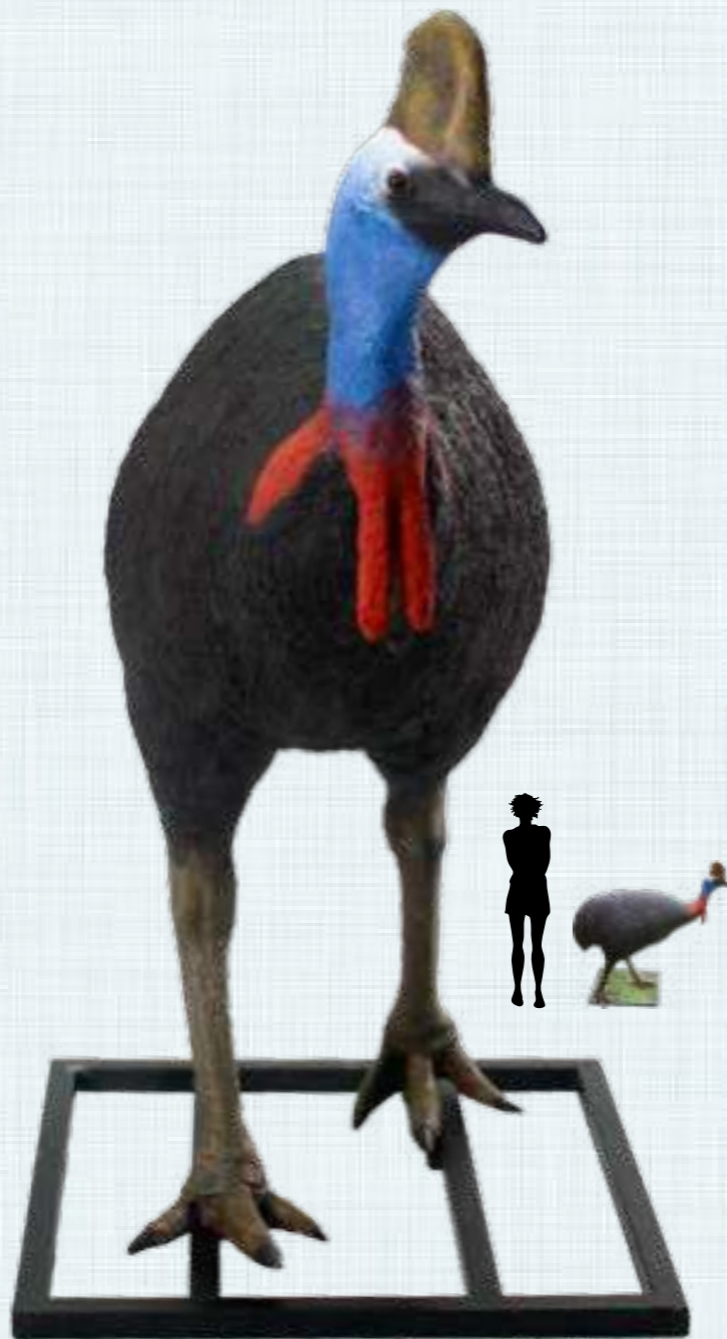
CASSOWARIES

080154
Cassowary Female
L 104 x W 85 x H 182cm - 24kg + Stand



Female cassowary

080156
Cassowary Chicks - pair
L 50 x W 33 x H 19cm - 1.9kg



Male cassowary



Cassowary family displayed in a museum exhibit with mural art

080155
Cassowary Male
L 114 x W 62 x H 119cm - 17 kg + stand



Megafauna Reconstructions - Birds

HAAST EAGLE - 3M WING SPAN



GIANT GOORI GOORI

The Dreamtime Cultural Centre in Rockhampton commissioned the addition of the aboriginal child riding the Goori Goori Bird to portray the legend of a giant eagle which carried off an aboriginal child as in Aboriginal Dreamtime folk law



Giant eagles ruled the skies during the Pleistocene era across Australia and New Zealand where the Haast Eagle ruled the roost. These eagles reached a wingspan of over 3 metres.



Megafauna Reconstructions - Birds

GIANT SCRUB TURKEY - 3 OR 4 GIANT RELATIVES OF THE MODERN DAY SCRUB TURKEYS ARE KNOWN OF IN THE FOSSIL RECORD.



NW. Mega Turkey
Turkey - Megafauna Brush Turkey on
base plate
L 90 x W 30 x H 79cm - 8kg



GIANT SCRUB TURKEY



Key points:

Australia was once home to five large megapodes, relatives of the brush turkey

Three of those are new species revealed in fossils from WA and SA.

Finding could debunk notion brush turkey descended from large megapode ancestor

Analysis of fossils suggests Australia was once home to five species of now-extinct giant megapodes — chunky, chicken-esque cousins of modern mound-building brush turkeys and mallee fowl.

The largest of these extinct birds weighed eight kilograms and was about four times the size of today's brush turkey.



Megafauna Reconstructions - Mammals

Ghost Bats hanging in Caves

GHOST BATS



Hanging Ghost Bat - Coloured Grey



Hanging Ghost Bat - Coloured Grey



Ghost Bat face - close up of real Ghost bat



Ghost Bats hanging - Gondwana Exhibit



Flying Version - Rubber Mould



Flying Version - Rubber Mould underside detail



Flying Version - Rubber Mould



Large Ghost bats are part of the Macroderma family which lived in the caves of ancient Riversleigh and fed on small rodents, frogs and lizards

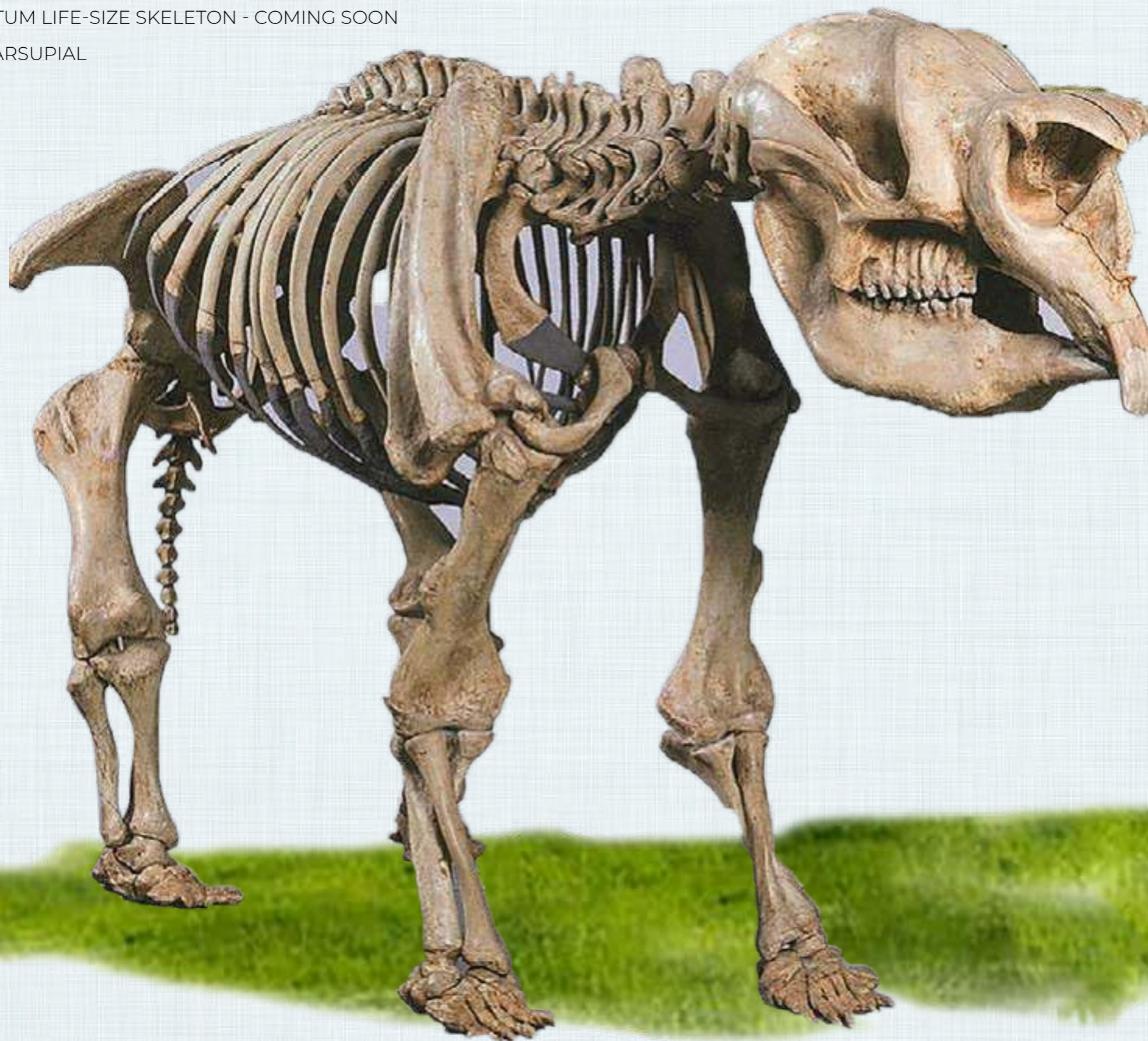




Megafauna Reconstructions - Mammals

DIPROTODON OPTATUM LIFE-SIZE SKELETON - COMING SOON

GIANT TAPIR LIKE MARSUPIAL





Megafauna Reconstructions - Mammals

DIPROTODON OPTATUM

GIANT TAPIR LIKE MARSUPIAL

THIS WAS THE LARGEST MARSUPIAL IN THE
MEGAFUNA RECORD IN THE WORLD.

THE MODEL IS APPROXIMATELY
L 300CM X W 100CM X H 200M



Scaled clay
model

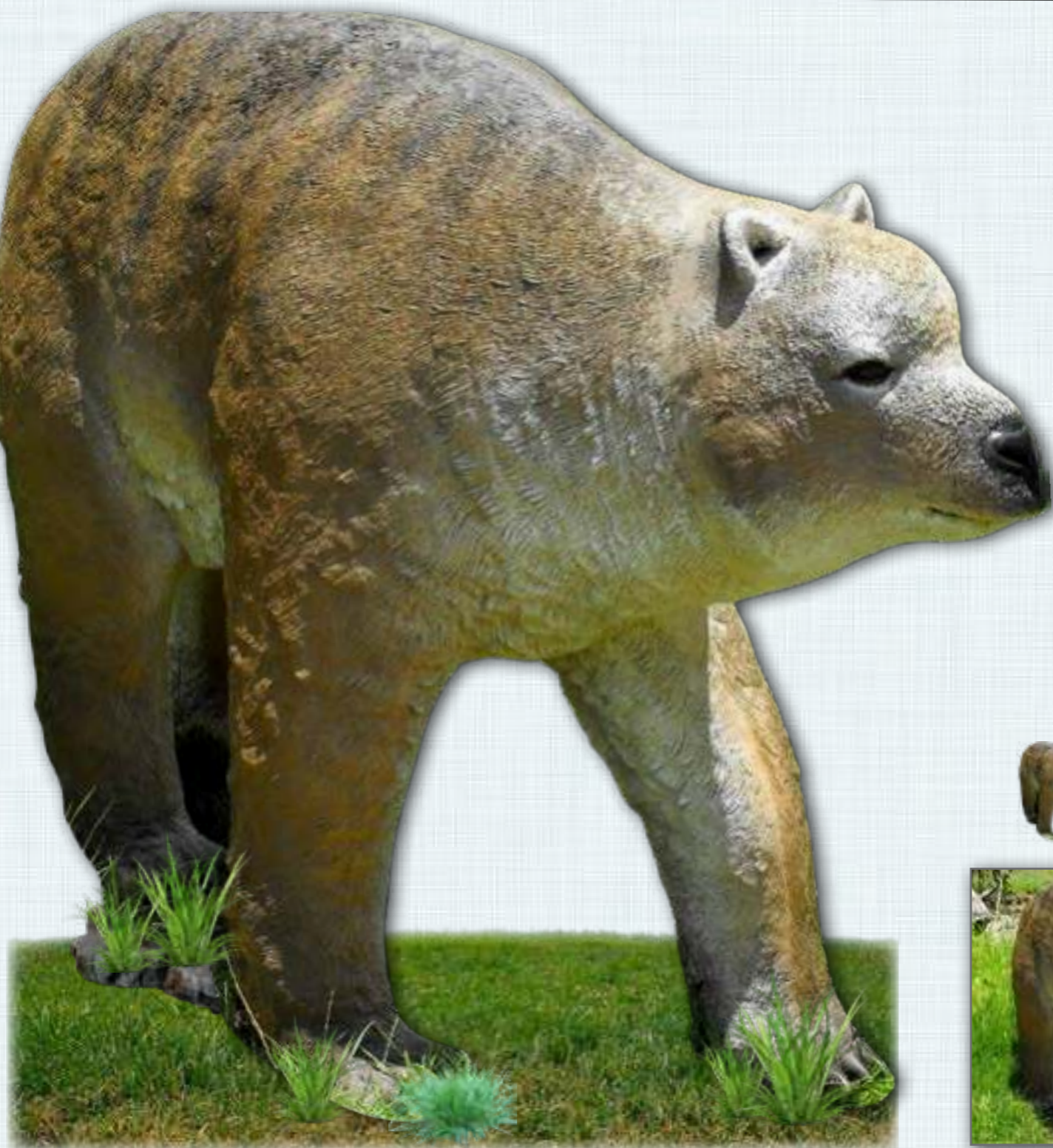


Megafauna Reconstructions - Mammals

HULOTHERIUM THOMASETTI

THE MOUNTAIN DIPROTODON

EXT-102
Hulotherium or Diprotodon
L 210 x W 55 x H 130cm - 35kg



Refer to our Fossil Dig Section for a larger view of Diprotodon fossil replica



This was a 300 kilogram relative of the much larger Diprotodon Optatum found over the entire Australian continent.

It was bear-like in form and was New Guinea's equivalent of China's Panda.

Natureworks has also recently completed a fossil dig of the Hulotherium for Port Moresby's Nature park



Megafauna Reconstructions - Mammals

LITO KOALA

LITO KOALA IN GONDWANA EXHIBIT

Lito koala is an ancestral koala which inhabited ancient rainforests about 25 million years ago





Megafauna Reconstructions - Mammals

MADONNA & CHILD - A SMALL DIPROTODON

These medium sized diprotodons are shown coming to the waters edge to drink. Many such animals stepped out onto limestone encrustations only to fall in and drown. Their fossils remains became cemented to the river bed.

MADONNA & CHILD -GONDWANA RAINFOREST EXHIBIT

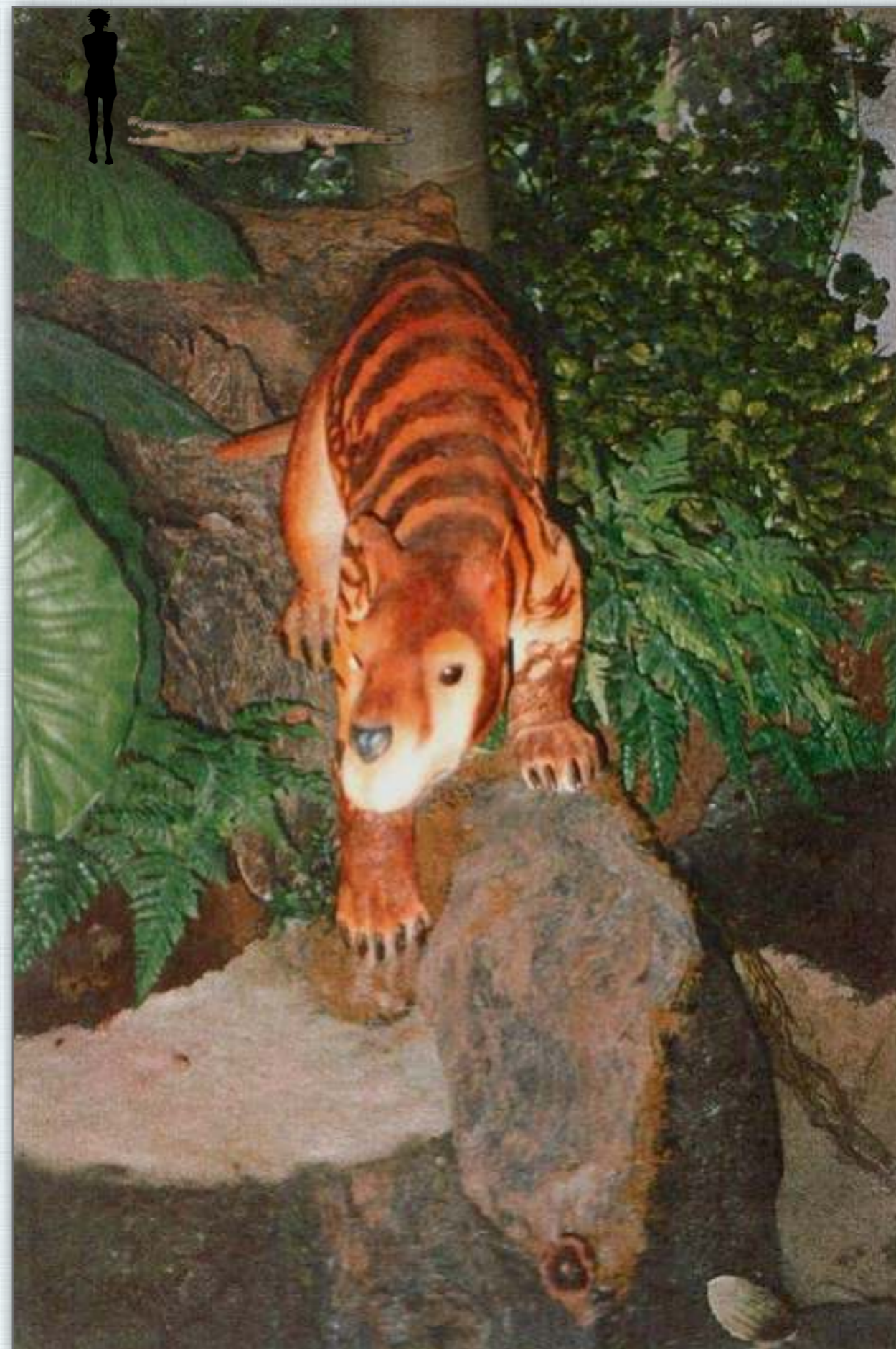




Megafauna Reconstructions - Mammals

NAMILAMADETA - AN ANCIENT BROWSING MARSUPIAL

Namilamadeta - Displayed in Gondwana Rainforest Sanctuary





Megafauna Reconstructions - Mammals

OBDURODON DICKSONI

Obdurodon Dicksoni
Riversleigh
Platypus like animal

Australian Megafauna Platypus
Crouching

The Obdurodon was first discovered at Riversleigh in 1985. It was slightly larger than the modern day platypus. It was found in The Ringtail Site at Riversleigh.

Riversleigh Illustration



Natureworks Exhibit





Megafauna Reconstructions - Mammals

OBDURODON THARALKOOLSCHILD
AN ANCIENT RIVERSLEIGH PLATYPUS

Obdurodon tharalkoolschild
Riversleigh
Platypus like animal

Platypus on rock base
L 100 x W 45 x H 55cm - ?kg





Megafauna Reconstructions - Mammals

PROPLEOPUS CHILLAGOENSIS

A CARNIVOROUS KANGAROO FROM THE PLIOCENE & PLEISTOCENE PERIODS

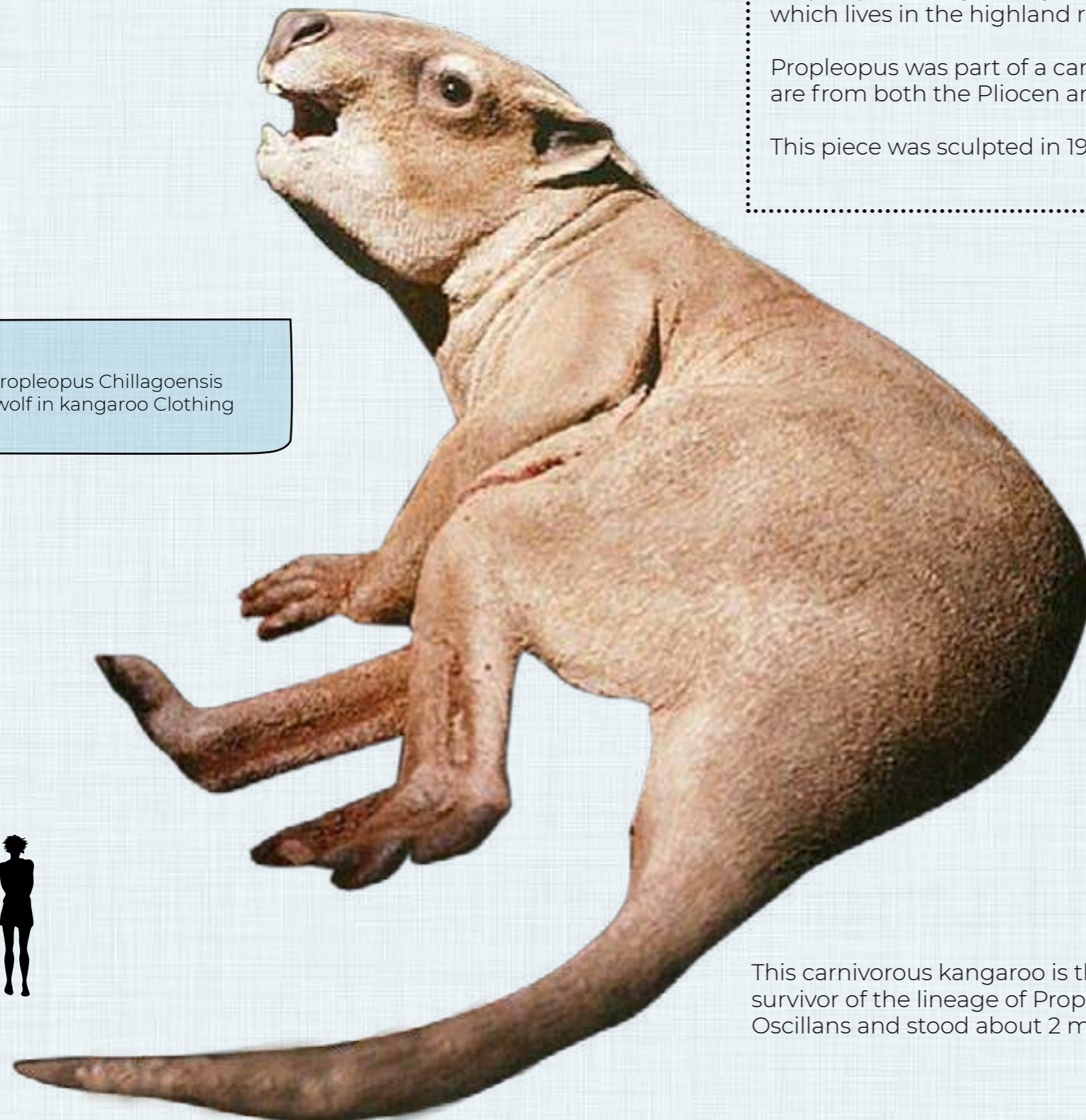
This tertiary mammal is related to the living rat-kangaroos (Potoroidae) which contains many members which are omnivorous.

Propleopus is very closely related to the Musky Rat-Kangaroo - *Hypsiprymaodon Mosehatus*, which lives in the highland rainforest of North Queensland.

Propleopus was part of a carnivorous group of kangaroos called the Propleopine Kangaroos are from both the Pliocene and the Pleistocene

This piece was sculpted in 1995 for the Riversleigh Fossil Interpretive Centre at Mt Isa.

Propleopus Chillagoensis
A wolf in kangaroo Clothing



This carnivorous kangaroo is the last survivor of the lineage of Propleopus Oscillans and stood about 2 metres tall.



Megafauna Reconstructions - Mammals

PALORCHESTES AZAEL-ADULT BUNYIP LIKE MARSUPIAL

PALORCHESTES AZAEL-ADULT BUNYIP
LIKE MARSUPIAL
L ? X W X H ? - - 40KG



REFERENCE
IMAGE

IN PRODUCTION





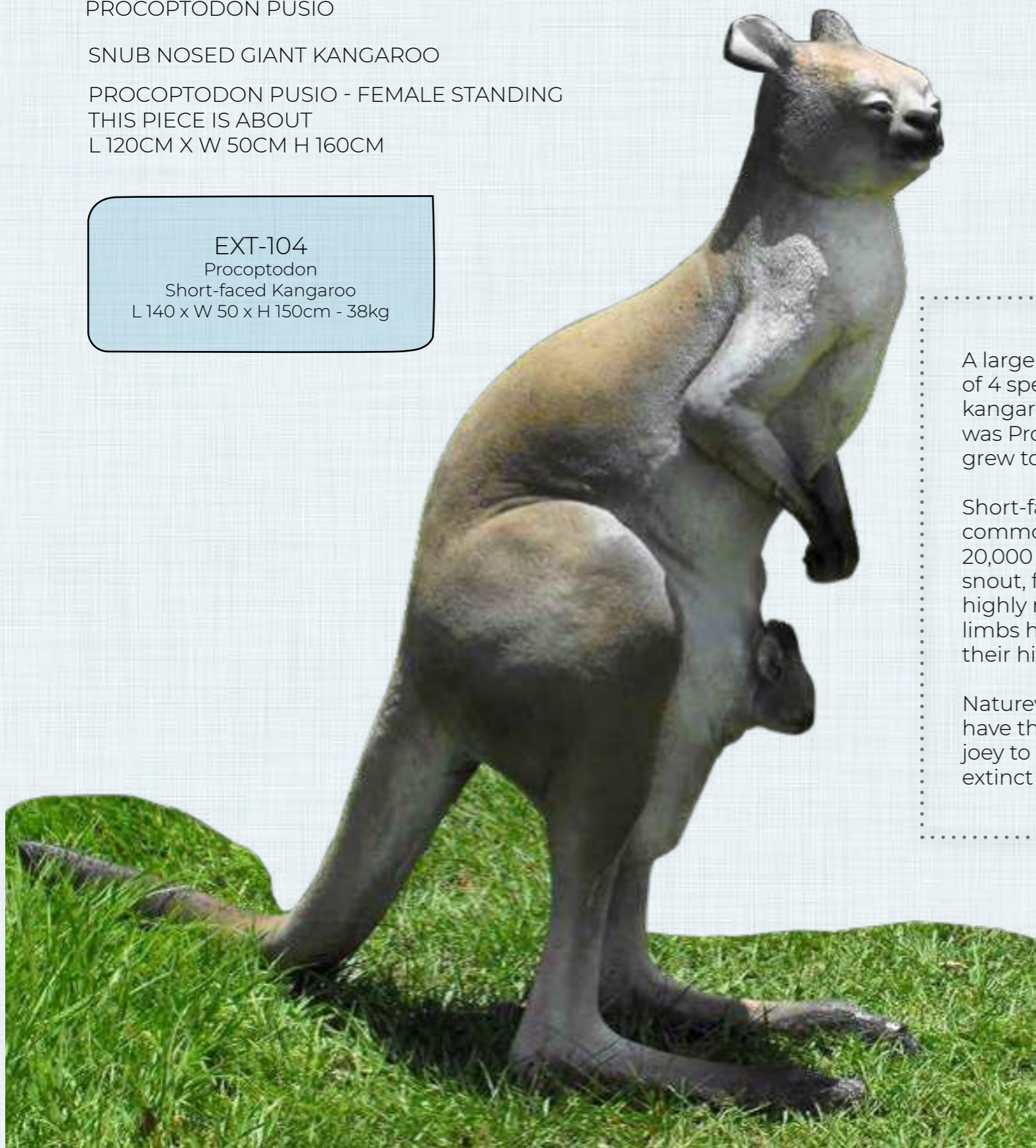
Megafauna Reconstructions - Mammals

PROCOPTODON PUSIO

SNUB NOSED GIANT KANGAROO

PROCOPTODON PUSIO - FEMALE STANDING
THIS PIECE IS ABOUT
L 120CM X W 50CM H 160CM

EXT-104
Procoptodon
Short-faced Kangaroo
L 140 x W 50 x H 150cm - 38kg



A large short-faced kangaroo, one of 4 species of giant Pleistocene kangaroos, the largest of which was Procoptodon goliah which grew to almost 3 metres.

Short-faced kangaroos were common in Australia until about 20,000 years ago. They had a short snout, forward facing eyes and highly mobile arms. Their front limbs had two long fingers and their hind foot had only one toe.

Natureworks are proud to now have this Procoptodon Pusio with joey to add to our collection of extinct megafauna





Megafauna Reconstructions - Mammals

PROCOPTODON GOLIAH
STANDING - GIANT MALE SHORT
NOSED KANGAROO

THIS PROCOPTODON GOLIAH
STANDS PROUDLY AT 2.8M HIGH

Order now

1.8m

CLAY MODEL SHOWN
HERE - IN PRODUCTION -
FRONT VIEW

CLAY MODEL SHOWN HERE -
SIDE VIEW

2.8m





Megafauna Reconstructions - Mammals

PHASCOLONUS GIGAS



It was the largest and most unusual of several large extinct wombats that inhabited Australia during the Pleistocene era

EXT-103
Phascolonus Wombat
Large Short Nosed Wombat
L 130 x W 60 x H 95cm - 30kg

It was the largest and most unusual of several large extinct wombats that inhabited Australia during the Pleistocene era.

This wombat was the first megafauna reconstruction by David Joffe in 1981. It was based on the drawing by Peter Schouten in the Australian Museum publication of Prehistoric Animals of Australia.

Its feet were not as suited for burrowing as are the modern day wombats, indicating it may have been a grazing animal similar to the Diprotodons.





Megafauna Reconstructions - Mammals

STEROPODON



Steropodon - in diorama exhibit





Megafauna Reconstructions - Mammals

THYLACINE GIANT - (THYLACINUS CYNOCEPHALUS)

TASMANIAN TIGER - 3 X LARGER THAN LIFE

Larger Than Life Thylacine (Tasmanian Tiger) POA

This 3 x larger than life Tasmanian Tiger or (Thylacinus Cynocephalus) was commission by the Launceston City Council as a playground feature in 2014.

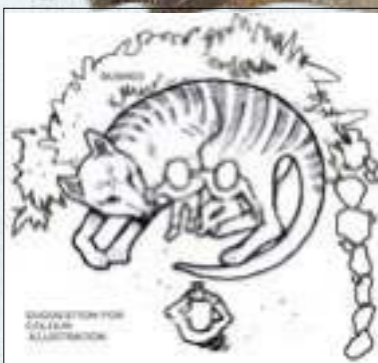
Thylacinus Potens the "powerful thylacine" was a larger and more heavily built ancestor of the modern thylacine, but nowhere near as big as the sculpture below.

In developing this piece, we ensured that it was built to Australian standards and is a heavily steel reinforced

sculpture in fibreglass.

It is now a centre piece for the Launceston Park in Tasmania - This sculpt also provides an education based play experience of the unique megafauna of Tasmania that has only become extinct in the last 50 years.

Natureworks can custom build almost anything, so if you are thinking about a unique sculpture for a playground please give Natureworks a call on 07 3289 7555



Concept Art





Megafauna Reconstructions - Mammals

THYLACINE - DOG SIZED CARNIVOROUS MARSUPIAL

Note: The back of this stone plinth is flat to enable wall mounting; this is not a full 3D sculpt

090020WM
Tasmanian Tiger
On Rock Plinth - Wall mount
L 173 x W 47 x H 125cm - 30kg



These Thylacines (Tasmanian Tigers) became extinct in Tasmania the 1930's following an extermination campaign waged by sheep farmers.

Tasmanian Tiger - Free Standing
Coming Soon

THYLACINE - WALL MOUNT



090020FS
Tasmanian Tiger
Free Standing
L 150 x W 37 x H 125cm - 10kg

THYLACINE
FREE STANDING

Same stance as above but without the rock





Megafauna Reconstructions - Mammals

THYLACINE - TASMANIAN TIGER

This piece was originally sculpted as part of the Riversleigh Interpretive Centre in Mount Isa Queensland and described by Prof. Michael Archer's team based on fossils recovered from the world heritage site at Riversleigh in North West Queensland



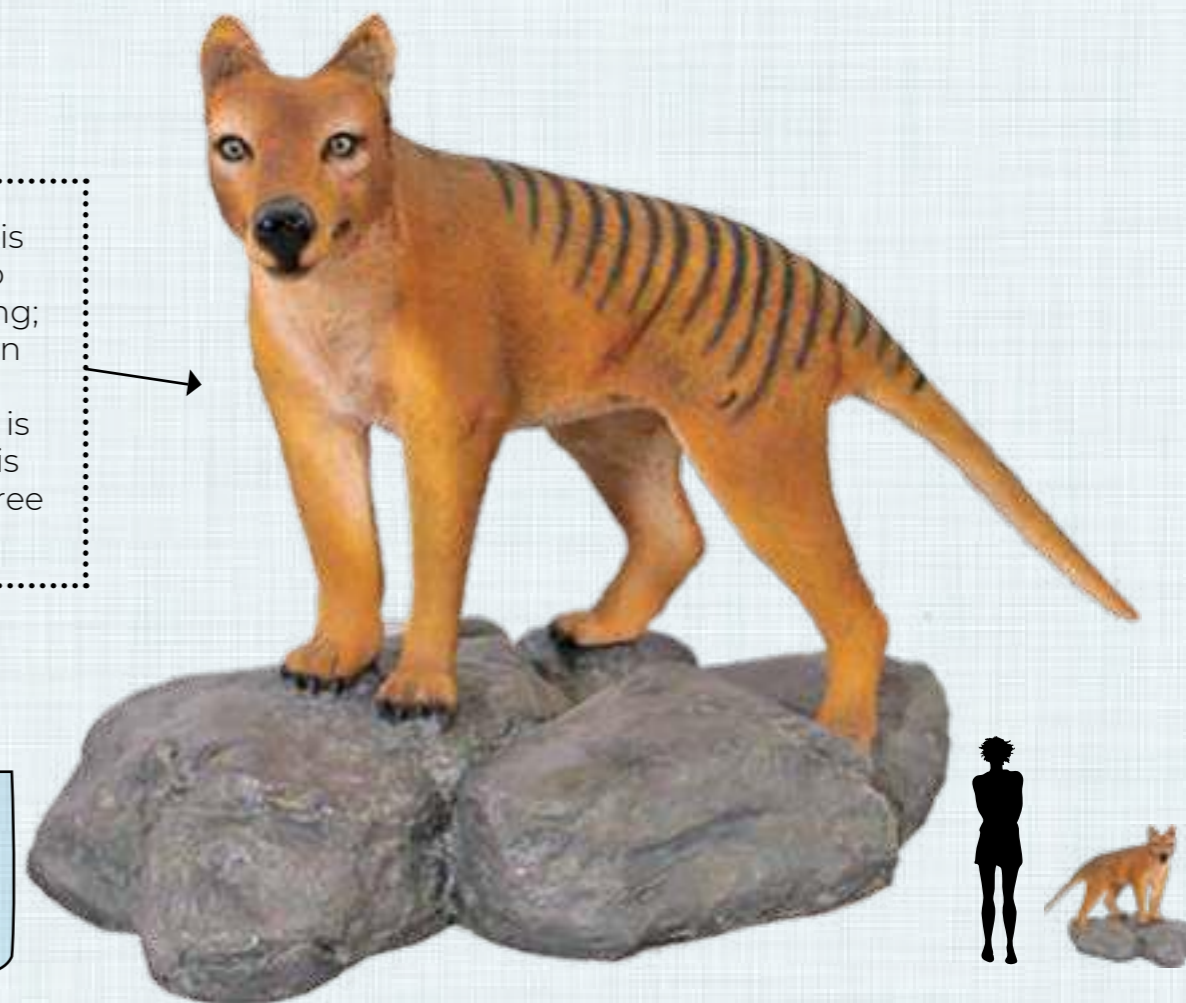
THYLACINE - ON ROCK
CAN BE WALL MOUNTED

100101FS
Tasmanian Tiger
Free Standing
L 150 x W 30 x H 60cm - 10kg



Note: The back of this stone plinth is flat to enable wall mounting; whilst the Tasmanian Tiger is positioned slightly forward and is a full 3D sculpt and is generally sold as a free standing display

100101
Tasmanian Tiger on Rock
L 103 x W 46 x H 70cm - 11.3kg





Megafauna Reconstructions - Mammals

THYLACINE - TASMANIAN TIGER

NW Thylacine - MO
Tasmanian Tiger
mouth open - new sculpt
Free standing
L 173 x W 47 x H 125cm - 31kg

Coming Soon





Megafauna Reconstructions - Mammals



THYLACOLEO LEAPING - MARSUPIAL LION - ON ROCK BASE

THYLACOLEO LEAPING ON ROCK
THIS PIECE IS ABOUT
L 150CM X W 60CM H 200CM





Megafauna Reconstructions - Mammals

THYLACOLEO - LEAPING- ON ROCK BASE

THYLACOLEO - LEAPING OUTSIDE



THYLACOLEO - LEAPING MT ISA INTERPRETIVE CENTRE



THYLACOLEO - LEAPING IN NATUREWORKS WORKSHOP





Megafauna Reconstructions - Mammals

TASMANIAN DEVIL

100049
Tasmanian Devil
L 75 x W 20 x H 31cm - 2.8kg

The Tasmanian Devil is not extinct, but was around during the megafauna period

Although Tasmanian Devils are not extinct, similar sized devils as found today and much larger were prevalent during the Pleistocene





Megafauna Reconstructions - Mammals

THYLACOLEO CARNIFEX- STANDING -
MARSUPIAL LION WITH 1 LEG RAISED

EXT-101
Thylacoleo
Marsupial Lion
L 140 x W 70 x H 80cm - 15kg

During the Pleistocene, the large Thylacoleo Carnifex roamed most of Australia except the arid centre.

The large lion-sized sabre toothed tigers were their evolutionary equivalent in the Americas. They had a set of pincer like incisors and enormous flesh cutting teeth.

Thylacoleo was Australia's apex predator. It had a long claw on its thumb and possum-like toes on its hind limbs and would have moved freely through the tree tops, enabling it to pounce on prey from above.

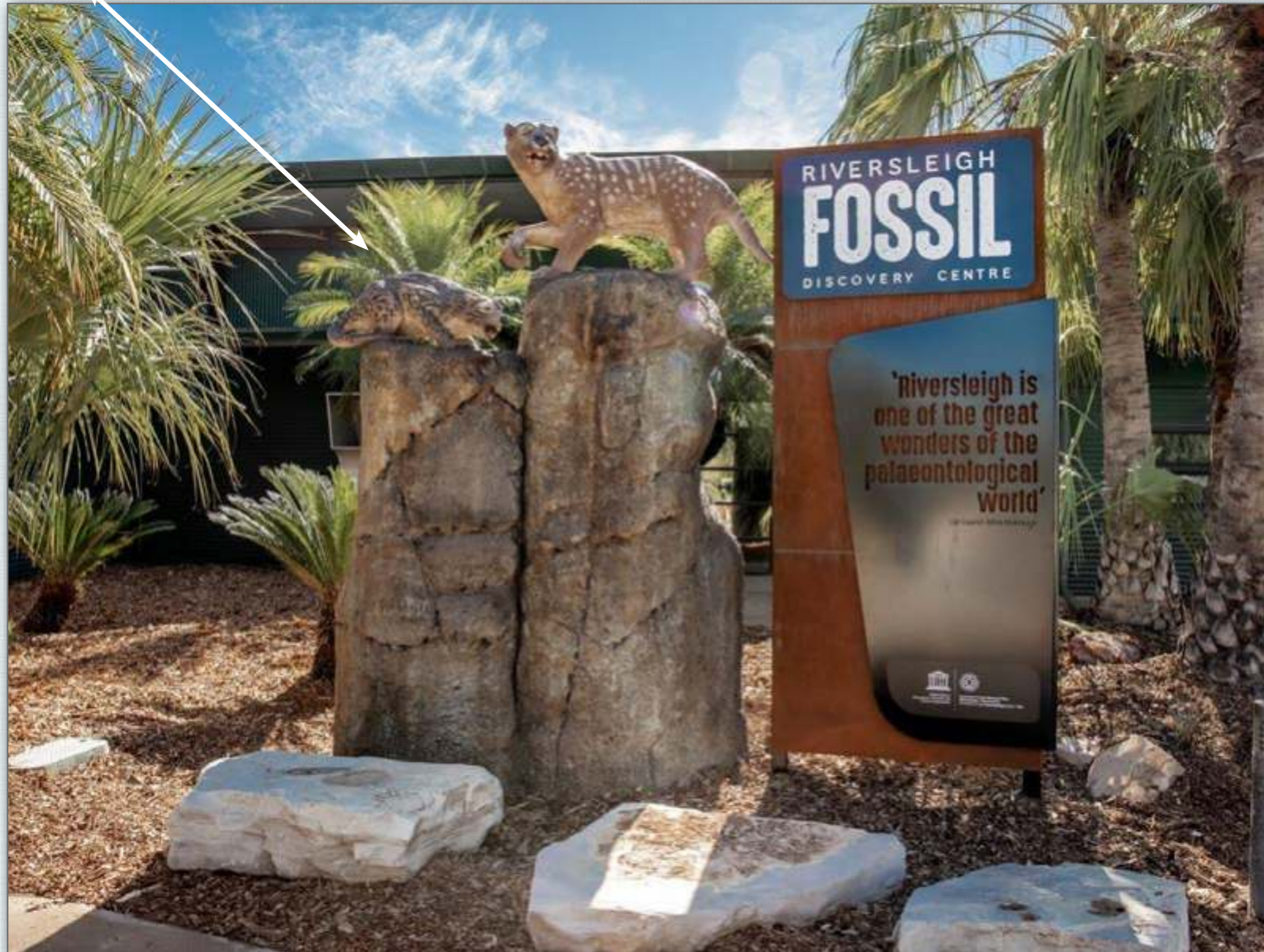




Megafauna Reconstructions - Mammals

WAKALEO- MARSUPIAL LION REPRODUCTION - CROUCHING POSE

WAKALEO LION ON ROCK BOULDER COMPLETED FOR RIVERSLEIGH FOSSIL DISCOVERY CENTRE ENTRY



Marsupial Lions on Rock Boulder - Concept Art

Side view





Megafauna Reconstructions - Mammals

WAKALEO - A LEOPARD - SIZED MARSUPIAL LION

The first remains of Wakaleo were found at Riversleigh in the mouth of a crocodile skull.

This was a leopard sized marsupial lion which may have evolved into the larger lion-sized carnivore of the later Pleistocene.

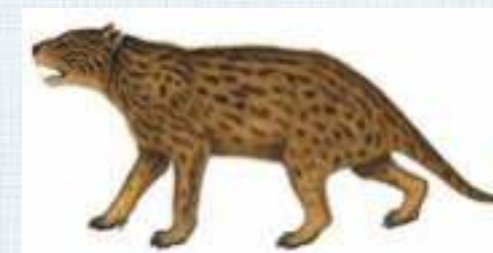


Gondwana Rainforest Exhibition showing Wakaleo within the rainforest



Building the diorama - Wakaleo within the rainforest

Wakaleo photo reference - side view





Megafauna Reconstructions - Mammals

WAKALEO- MARSUPIAL LION REPRODUCTION

MEGAFAUNA MINI-GOLF - CONCEPT ART





Megafauna Reconstructions - Mammals

ZAGLOSSUS HACKETTI
HACKETT'S GIANT ECHIDNA



Natureworks custom-designed this Zaglossus Hacketti to be part of the Megafauna exhibit at David Fleay's Wildlife Park - on the Gold Coast.

The national conservation park highlights the need to preserve our wildlife and provides a valuable resource for educating its visitors to help look after our existing unique Fauna.

Characteristics.

- This sculpture has been created with the known information of only a few bones that have been found in Western Australia dating back to the Pleistocene.
- 1 metre high
- 600mm long
- Custom designed and painted as a Megafauna Monotreme

ZAGLOSSUS ADULT
CONCEPT ILLUSTRATION



IN PRODUCTION - UNPAINTED

ZAGLOSSUS ADULT & BABY
CONCEPT ILLUSTRATION





Megafauna Reconstructions - Reptiles

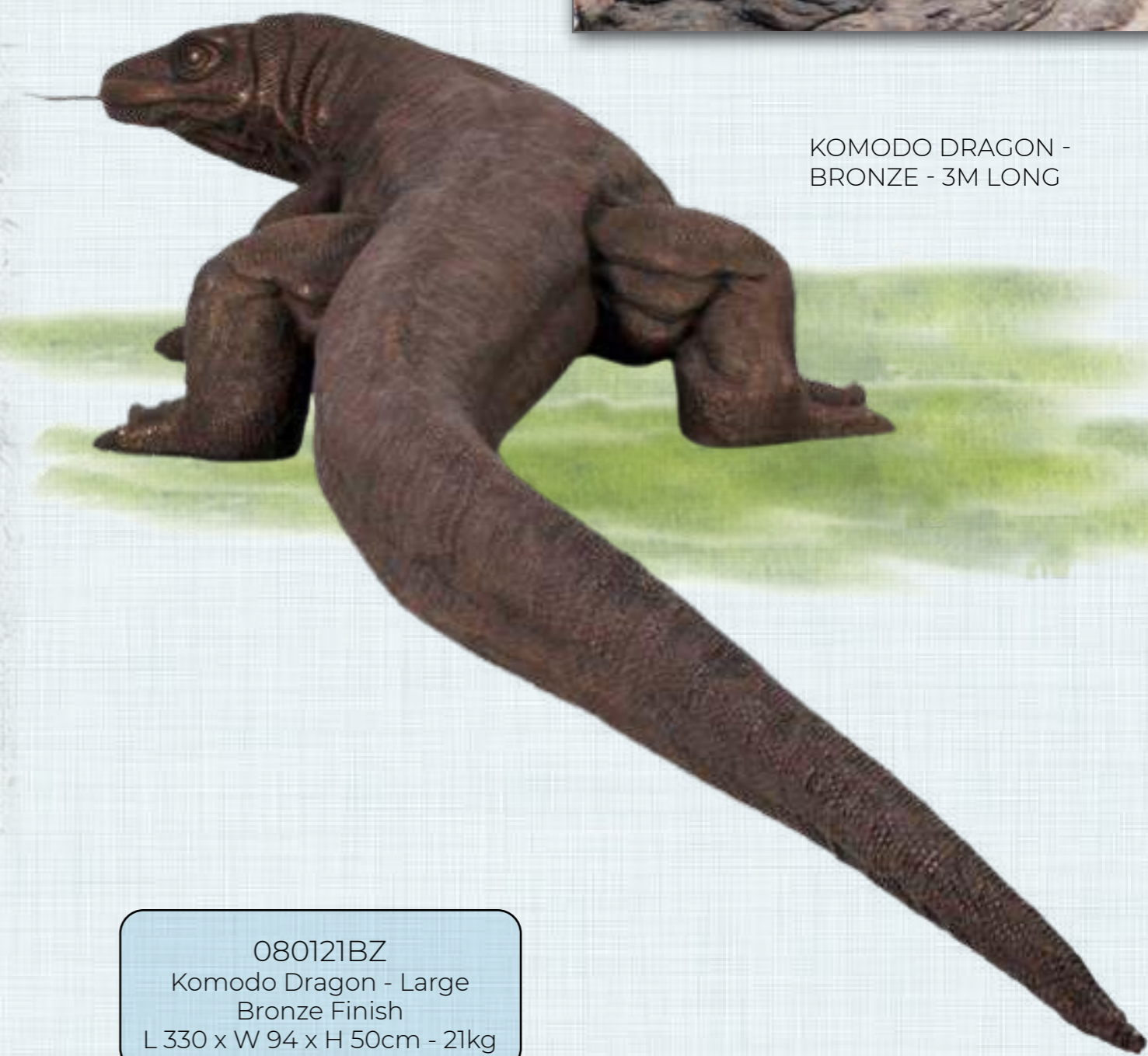
KOMODO DRAGON - BROWN -
3M LONG

The Komodo Dragon has recently been accepted as having been widely distributed throughout the mainland continent during the Pleistocene.

As such it is now considered a relic of the Australian megafauna landscape.



KOMODO DRAGON -
BRONZE - 3M LONG



080121
Komodo Dragon - Large
Natural Finish
L 330 x W 94 x H 50cm - 21kg



080121BZ
Komodo Dragon - Large
Bronze Finish
L 330 x W 94 x H 50cm - 21kg



Megafauna Reconstructions - Reptiles

KOMODO DRAGON - PAINTED AS A BELLS
MONITOR - BLACK & WHITE - 3M LONG

080121BZ
Komodo Dragon - Large
Bells Monitor paint finish
L 330 x W 94 x H 50cm - 21kg



Komodo Dragon - Bells monitor outside at Natureworks





Megafauna Reconstructions - Reptiles

KOMODO DRAGON - BROWN -
168CM LONG

120001
Komodo Dragon
5.5ft - Small
L 168 x W 55 x H 32cm - 10kg





Megafauna Reconstructions - Reptiles

KOMODO DRAGON - BROWN -
2M LONG

KOMODO DRAGON WITH CURVED
TAIL - 2 METRES



Komodo Dragon in production at Natureworks sculpture studio





Megafauna Reconstructions - Reptiles

GIANT MARSUPIAL CARCASE - KOMODO'S LEFTOVER FEAST

This piece is about
L 70CM X W 75 CM H 10CM

THIS RECONSTRUCTION IS LIGHTWEIGHT EASY TO PLACE INTO A DISPLAY.

IT CERTAINLY ADDS TO AN AUTHENTIC LANDSCAPE SETTING WHERE THERE WOULD BE REMAINS OF VARIOUS WILD ANIMALS.

THIS IS A VERY AUTHENTIC LOOKING RECONSTRUCTION.

ALL OF THE DECAYED ANIMAL BONES HAVE BEEN COLLECTED AND RECONSTRUCTED AS THEY WOULD HAVE PERISHED IN THE WILD.

AVAILABLE AS A SINGLE ITEM ON A FLAT BASE PLATE

CONSTRUCTED IN A DURABLE FIBREGLASS MATERIAL WITH ALL THE ADDITIONAL TEXTURING AND COLOURS - SHOWN HERE IN THE PHOTOGRAPH





Megafauna Reconstructions - Reptiles

KOMODO DRAGON - LARGER THAN LIFE - MEGALANIA

SHOWN IN OUTDOOR ASIAN TEMPLE SETTING LOOKING DOWN TO GREET THE VISITOR ENTERING THE EXHIBIT - 6 METRE TOTAL LENGTH



Komodo Dragon - during installation- Australian Reptile Park



Custom Signage - ancient rock effect



Komodo Dragon in production



Komodo Dragon tail in production

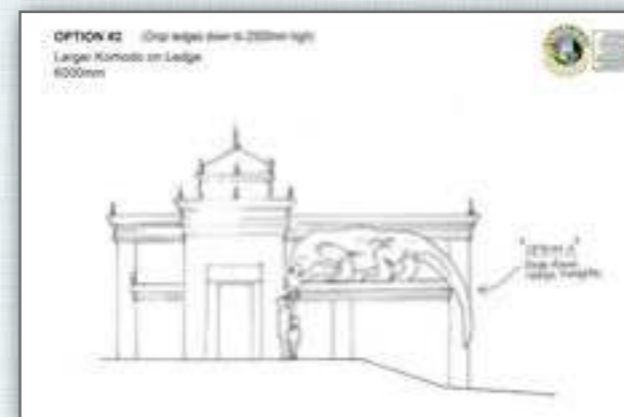
This is a new sculpture of a 6m Long Megalania sized Komodo Dragon painted with a stone-like finish to crown the entrance to the Komodo Dragon Temple at the Australian Reptile Park at Ourimbah in New South Wales.

Natureworks now has sculpted a number of decorative facade elements so as to provide authenticity to this spectacular temple built to provide a display of live Komodo Dragons which appear to have taken over the ruins of the temple

A reproduction of a shredded Asian water buffalo carcass in fibreglass emerging from a dried muddy water hole completes the story.

Natureworks now has 5 different Megalania sculptures in different poses and is planning its own ambush setting of a herd of diprotodons being sized up for an attack at the edge of a water hole.

Custom concept Art





Megafauna Reconstructions - Reptiles

MEGALANIA - GREEN - 7M

THIS SIZED MEGALANIA WAS ORIGINALLY SCULPTED FOR MT ISA FOSSIL CENTRE- BEST DISPLAYED OVERHEAD LOOKING DOWN AT VIEWER



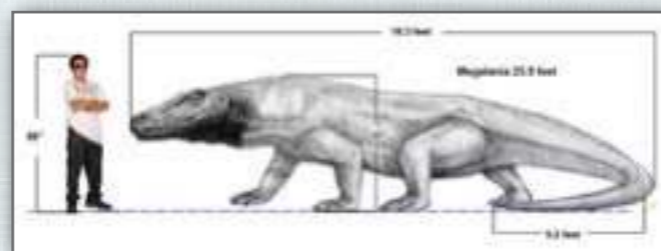


Megafauna Reconstructions - Reptiles

MEGALANIA - BROWN
KOMODO DRAGON PAINT FINISH



130099
Megalania
Brown Version
L 716 x W 160 x H 168cm - 257kg

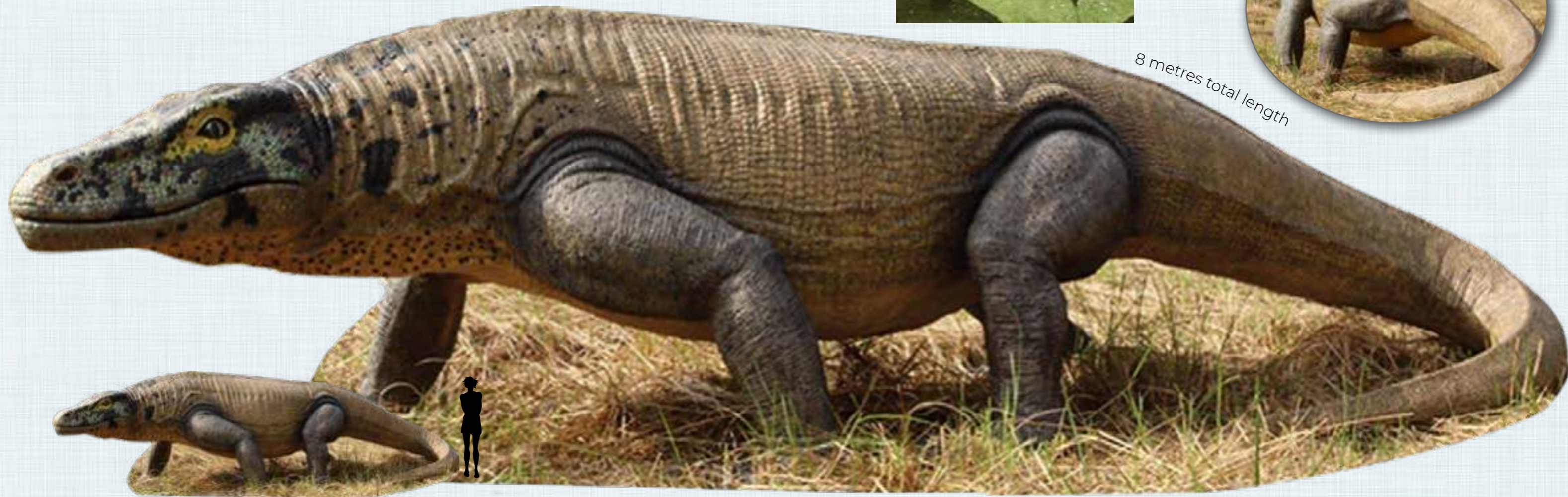


This Giant Megalania was a major land predator of the Australian Continent in the Pleistocene era. This piece is a new addition to our megafauna collection. It will provide a great focal point for an education based play experience for children. It has been designed as a playground friendly Australian outdoor/indoor element and will provide a powerful connection between the modern day contemporary fauna and our prehistoric past.

The viewpoint has recently been generally adopted that the modern Komodo Dragon would have occurred also over mainland Australia. Fossils of the Komodo have not yet been found.

It is up to anyone's guess how big the biggest megalania may have been, but the reconstruction by Natureworks at 8 metres in length is not a fantasy but a likely reality.

8 metres total length





Megafauna Reconstructions - Reptiles

MEGALANIA - BLACK & WHITE BELLS MONITOR PAINT FINISH



130099
Megalania
Bell's Monitor Version
L 716 x W 160 x H 168cm - 257kg



8 metres total length

Also Available 3 metre Megalania





Megafauna Reconstructions - Reptiles

MEIOLANIA OWENI

GIANT HORNED TORTOISE

MEIOLANIA - GIANT HORNED TURTLE
THIS PIECE IS ABOUT
L 200CM X W 80CM H 85CM

Giant Horned Turtles have been found in Pleistocene deposits, throughout North East Australia on Lord Howe Island and in New Caledonia.

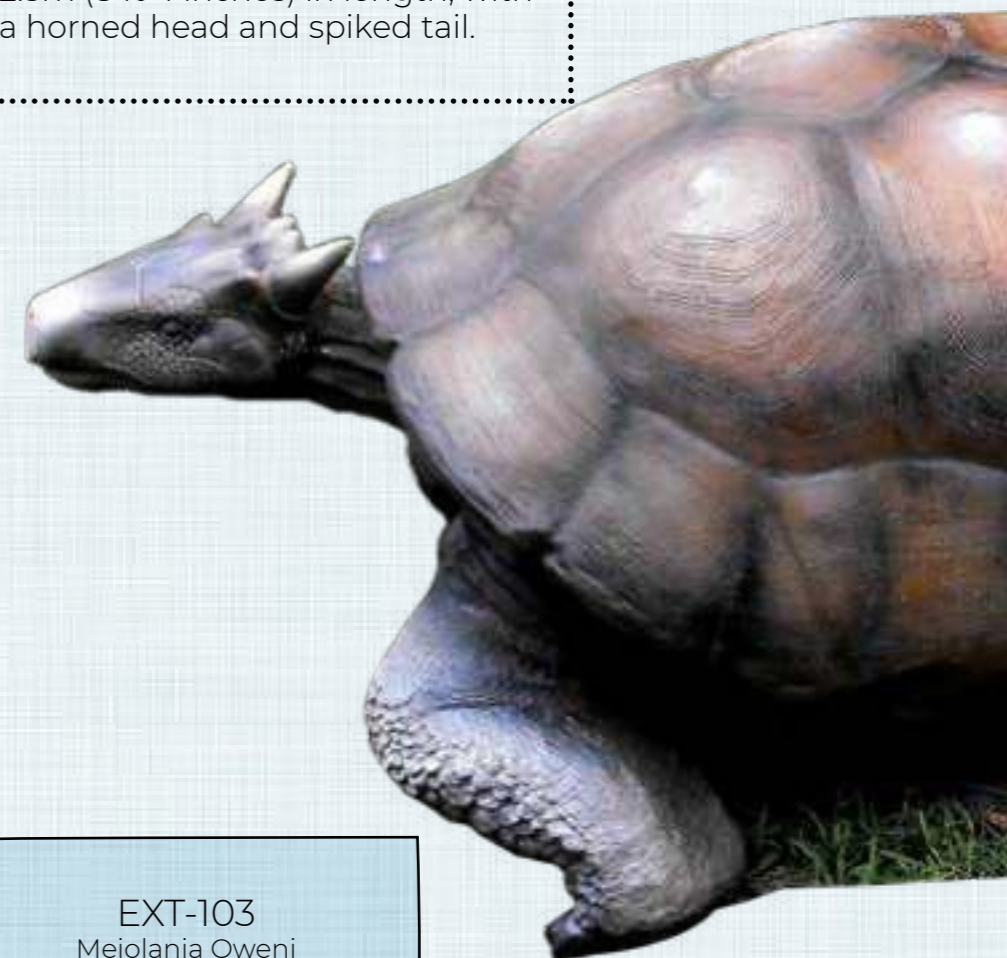
They grew to over 2 metres in length and weighed over 200kgs.

These turtles ate plants and could not have retracted their heads into their shell due to their horns.

Natureworks has recently sculpted this piece to add to our Australian Megafauna Collection.



"Meiolania" was a genus of huge terrestrial turtles measuring up to 2.5m (8 ft 4 inches) in length, with a horned head and spiked tail.



EXT-103
Meiolania Oweni
Giant Horned Tortoise
L 200 x W 80 x H 85cm - 32kg



Megafauna Reconstructions - Reptiles

WONAMBI NARACOORTENSIS - - GIANT PYTHON -HORIZONTAL MOUNT ON BRANCH - 5M

In Production

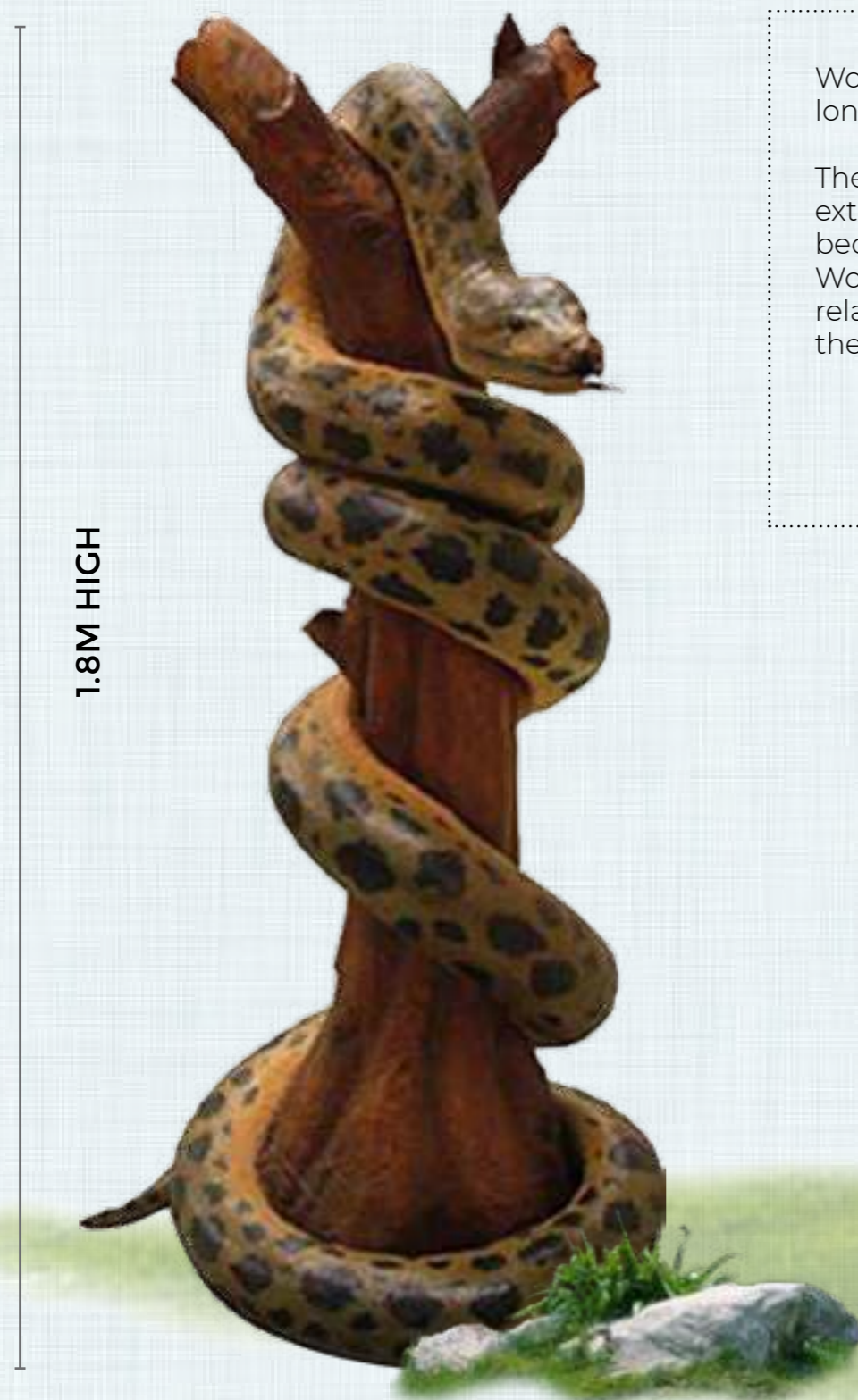
This 6m plus Matsoiid snake was found in the caves of Southern Australia making it as large as the Anaconda of South America





Megafauna Reconstructions - Reptiles

WONAMBI - ON TREE STUMP



Wonambi means serpent of the Dreamtime. It was up to 9 metres long with a body diameter of about 30cm.

The family of Madtsoiidae of which Wonambi is a species became extinct elsewhere in the world about 50 million years ago. It became extinct in Australia approximately 55 million years ago plus. Wonambi is from the Pliocene/Pleistocene eras and its close relative Yurlunggur found at Riversleigh in North Queensland are the two best known of all matsoiid snakes.





Megafauna Reconstructions - Reptiles

MONTYPYTHONOIDES RIVERSLEIGHENSIS ON CYCAD TRUNK
6M HIGH

Montypythonoides riversleighensis is a species of fossil python discovered by Michael Archer and described from Oligocene Miocene deposits at Riversleigh in North West Queensland. Specimens up to 7m long have been recorded. Many different species of snakes are recorded in these fossil deposits.

In 2005 Natureworks re-created this giant 7 metre python wrapped around a 5 metre tall Lepidozamia hopeii cycad as a spectacular entry-statement to the Wild Island adventure playground at Currumbin Sanctuary tourist attraction.

Currumbin Sanctuary entry display



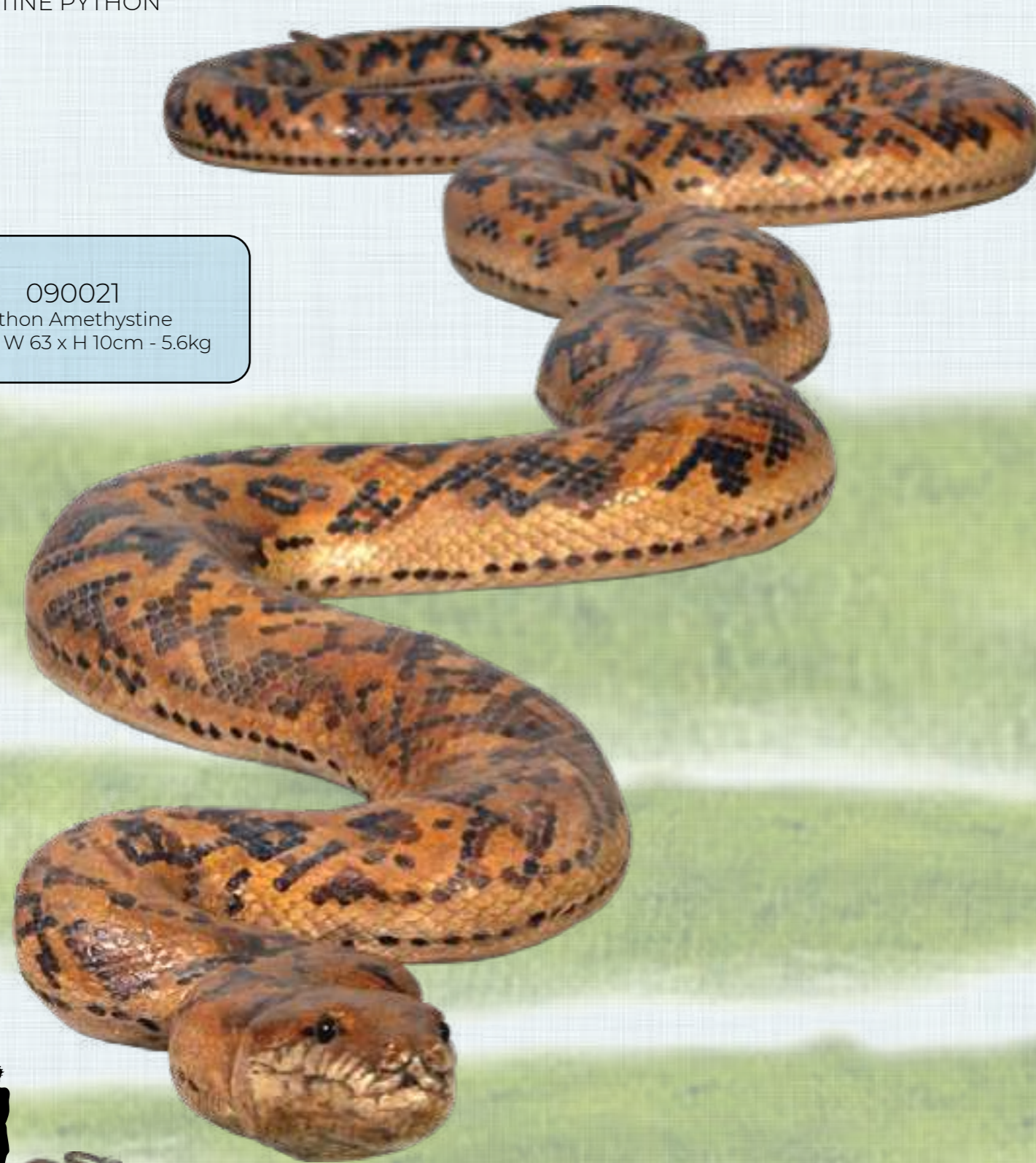
Ancient Riversleigh Python on Cycad





Megafauna Reconstructions - Reptiles

AMETHYSTINE PYTHON



090021
Python Amethystine
L 253 x W 63 x H 10cm - 5.6kg



New 4.5m version also available

NOTE:

- A 4.5 metre version also available - by special order only.
- This larger version is a reproduction of an amethystine python of approximately 8.5m in length.
- It is one of the worlds largest snakes. It is a slender python for its size and is not able to prey on the large animals that its relative the anaconda of South America can.



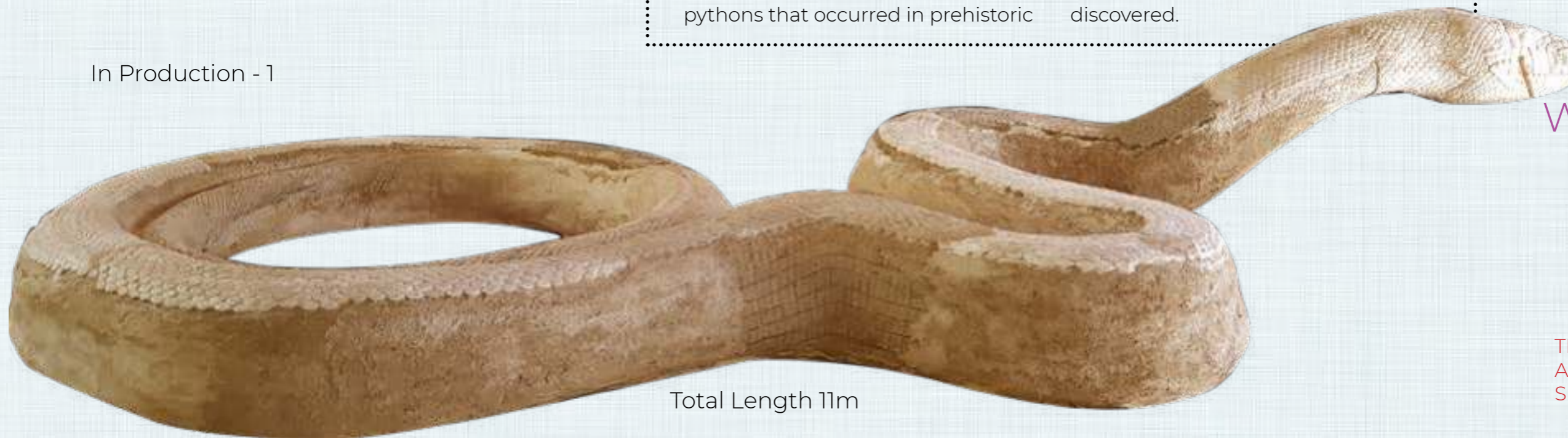
Megafauna Reconstructions - Reptiles

MONTYPYTHONOIDES RIVERSLEIGHENSIS
GIANT PYTHONS OF THE PLEISTOCENE - 11M

Just how big did Wonambi or Montypythonoides actually grow to? Only a very small number of fossils of prehistoric pythons have been found in Australia. As there were millions of pythons that occurred in prehistoric

times, it is easily conceivable that some of them would have reached proportions far greater than the estimates of size suggested by the size of the few snake fossils so far discovered.

In Production - 1



Total Length 11m

WHAT COLOUR & DESIGN WOULD YOU LIKE?

THESE GIANT SNAKES CAN BE ADAPTED TO SUIT VARIOUS SPECIES



In Production - 2 - Scale detail completed

Giant Python - Sandpit & Climber - This spectacular sculpture can be painted to match the many different colour variations of carpet pythons found throughout Australia & the world

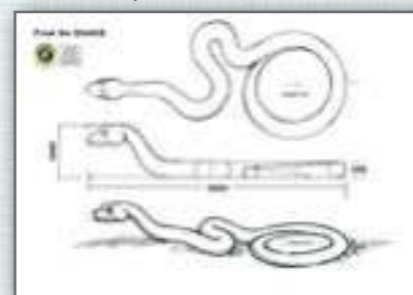
Rainbow Serpent With Sandpit and splash pool



Giant Python - Sandpit & Climber



Concept Art



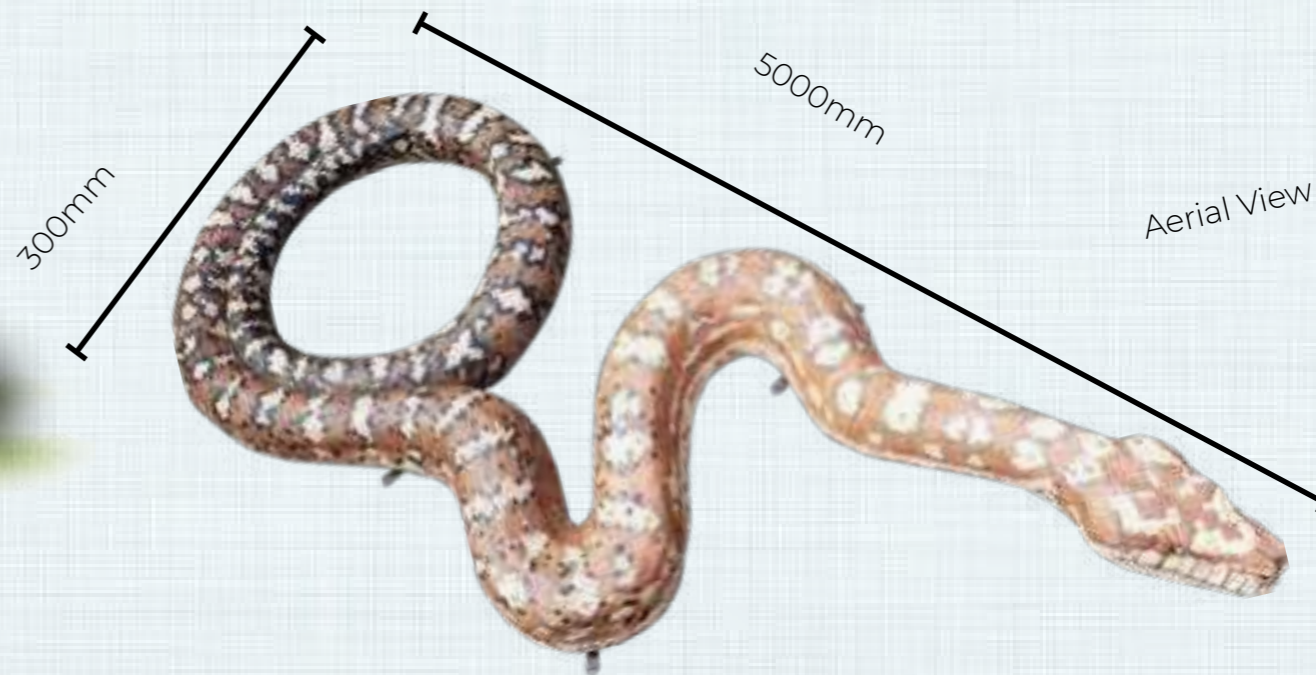


Megafauna Reconstructions - Reptiles

CENTRALIAN CARPET PYTHON - GIANT



Size Comparison



Aerial View



5000mm

1000mm

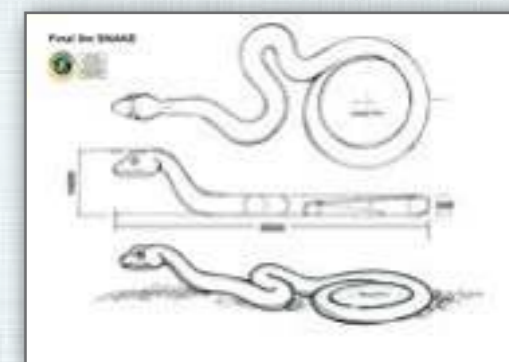
In Production - Scale detail completed

Front View

Head View - Showing Scale detail

3 - Rear View

Concept Art





Megafauna Reconstructions - Reptiles

CENTRALIAN CARPET PYTHON - GIANT

Completed Playgrounds



Delivery



Side View





Megafauna Reconstructions - Reptiles

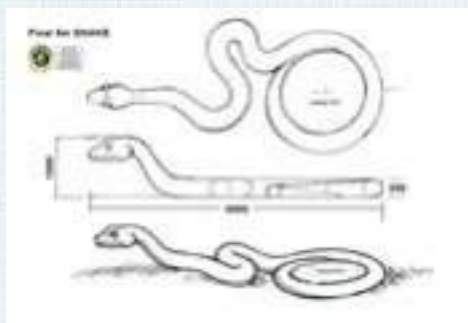
CARPET PYTHON- GIANT

Size - Length 5000mm x Width 300mm x Height - 1000mm

Aerial View



Concept Art



Delivery



In Production - Scales & Paint nearly completed

Giant Pythons are known from several discoveries throughout Australia in the fossil record. It is not known just how big the biggest of these may have been.

Certainly the Yurlunggur genus, found at Riversleigh in Queensland and also in the Northern Territory grew to at least 9 metres

and 30cm in diameter.

As only a very small number of fossils pythons have been found, It is likely that there would have been many much larger pythons which occurred over the entire continent over many millions of years.



Megafauna Reconstructions - Reptiles

TITANABOA - GIANT PYTHON - SNAKE

Size - Length 5000mm x Width 300mm x Height - 1000mm





Megafauna Reconstructions - Reptiles

GIANT PYTHON SNAKE - FOR PLAYGROUND - MUNGERIE HOUSE

Making of the Mungerie House Giant Snake



Snakes body showing detail of scales - - Image 1



Head & Body taking shape - Image 2



First Coat of Paint being applied - Image 3



Second Coat of Paint applied - Image 4



Second Coat of Paint to head - Image 5



This giant playground snake is a spectacular playground item. It has detailed scales & paintwork which wraps around the sandpit providing a Fun, safe themed area for all age groups. It also doubles up as seating for adults to use whilst the children play in the sandpit.





Megafauna Reconstructions - Reptiles

CROCODILE 28FT - SALTWATER

Saltwater Crocodiles have been recorded up to 28ft in length, how big could they have grown to over the last 10 million years?

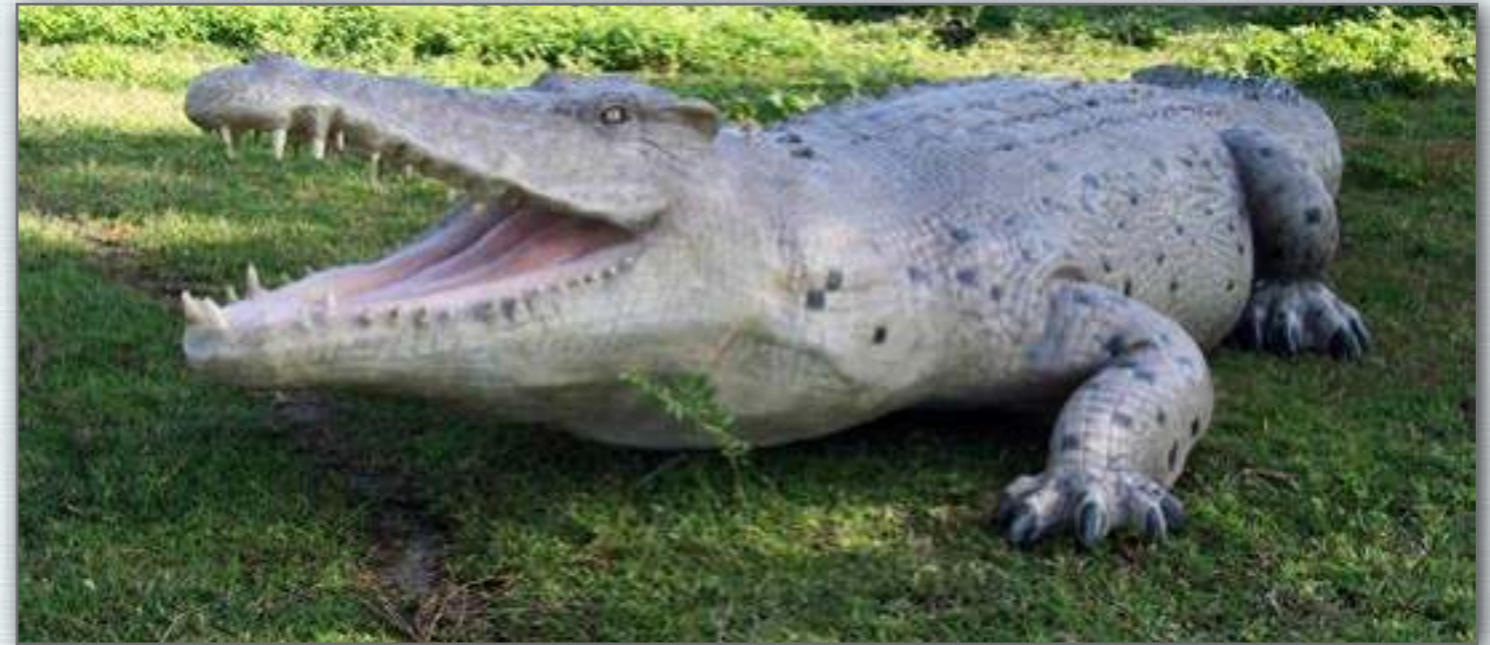
The largest of Natureworks crocodiles is this 28ft or 8.5 m long saltwater crocodile.

Story behind the 28ft Pawlowski Crocodile

This is a reconstruction of the largest crocodile in Australia, shot by Mrs Krys Pawlowski in 1957 on the banks of the Norman River (Northern Territory). It measured 28ft 4" or 8.63m, a size unheard of in Australia and one that still draws scepticism from some people today.

Natureworks realistic life-size fibreglass crocodile statues add the WOW FACTOR to any garden outlets, mini-golf courses and reptile reserves or movie setting.

Interested in the astonishing full story behind how this enormous crocodile became famous. Published by the Australian news – ["Death of Monster"](#)

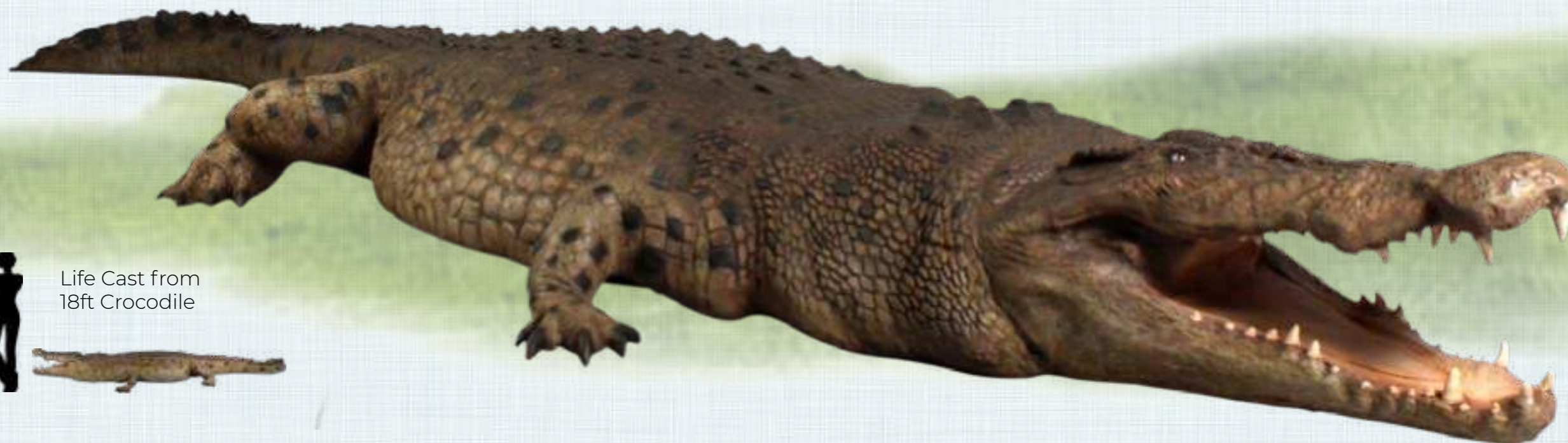




Megafauna Reconstructions - Reptiles

CROCODILE 18FT - SALTWATER

110090
Crocodile 18ft Saltwater
Mouth Open
L 470 x W 142 x H 38cm - 78kg



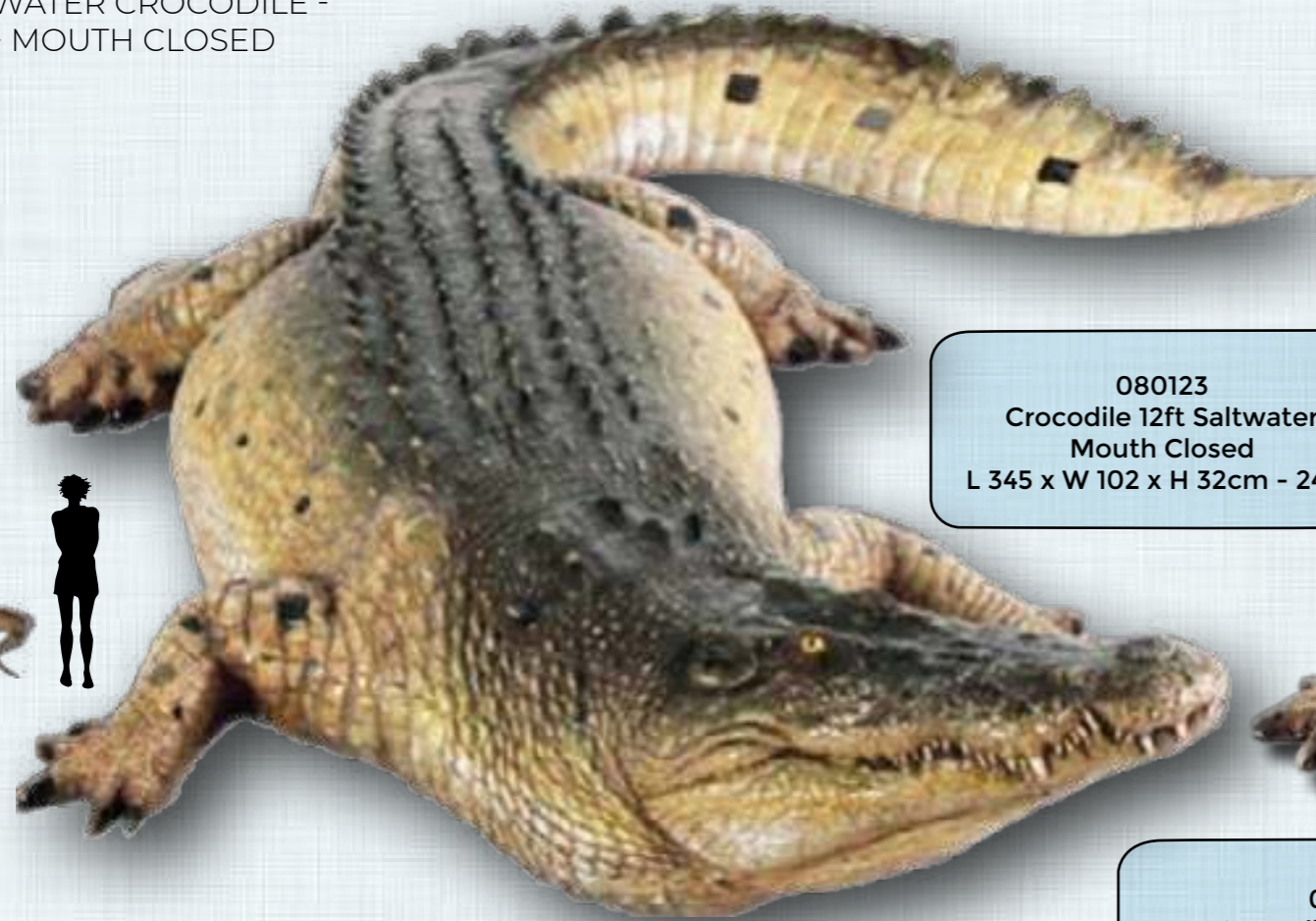
Life Cast from
18ft Crocodile





Megafauna Reconstructions - Reptiles

SALTWATER CROCODILE -
12FT - MOUTH CLOSED



080123
Crocodile 12ft Saltwater
Mouth Closed
L 345 x W 102 x H 32cm - 24kg



ALSO AVAILABLE IN
BRONZE FINISH

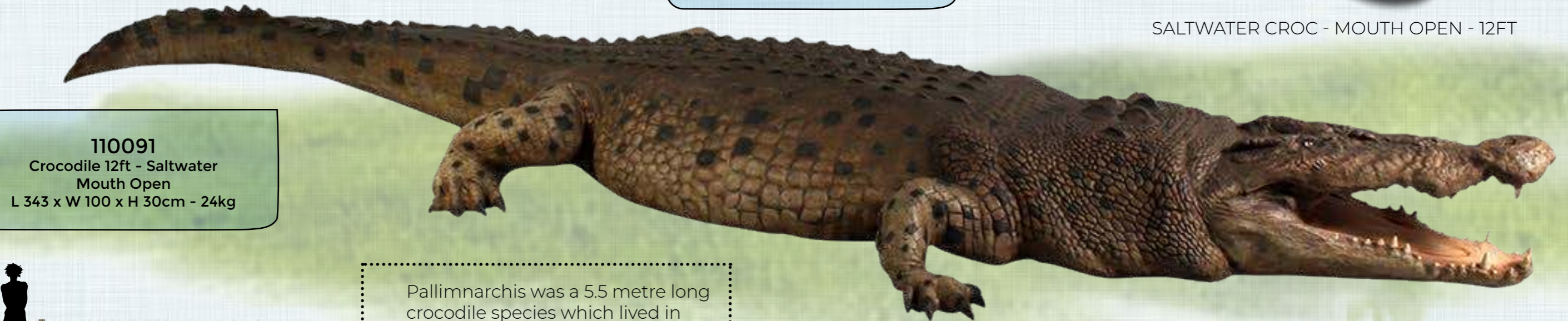
"LIFE CAST"



080123BZ
Crocodile 12ft Saltwater
Mouth Closed - BRONZE
L 345 x W 102 x H 32cm - 24kg

SALTWATER CROC - MOUTH CLOSED - 12FT

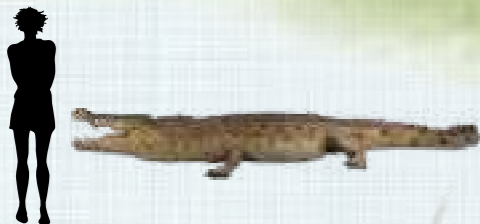
SALTWATER CROC - MOUTH OPEN - 12FT



110091
Crocodile 12ft - Saltwater
Mouth Open
L 343 x W 100 x H 30cm - 24kg

Pallimnarchis was a 5.5 metre long crocodile species which lived in the Gregory River 20,000 years ago during the Pliocene and Pleistocene

PALLIMNARCHIS - 5.5M
ANCIENT CROCODILE





Megafauna Reconstructions - Reptiles

QUINKANA MELOLDI CROCODILE -
WALKING - MOUTH CLOSED-4FT -

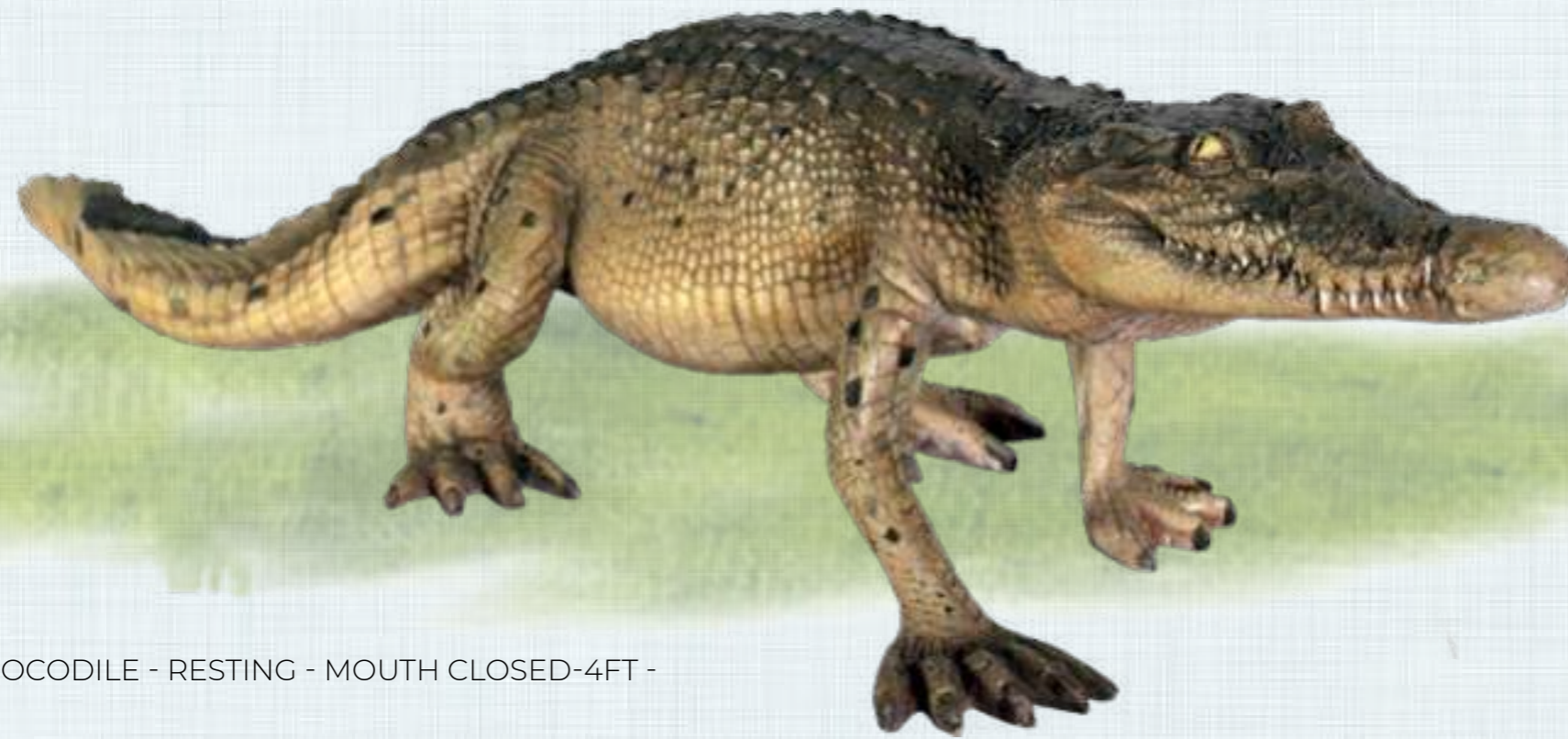
This walking Quinkana meloldi crocodile was found by Willis in 1997 at the White Hunter site in Riversleigh North Western Queensland in a late Oligocene deposit.

The species was named in 1997 for Ulrich Melold a German astronomer.

080112
QUINKANA MELOLDI Crocodile
4ft walking
Mouth Closed
L 129 x W 28 x H 39.4cm - 2.8kg



Crocodile walking outside



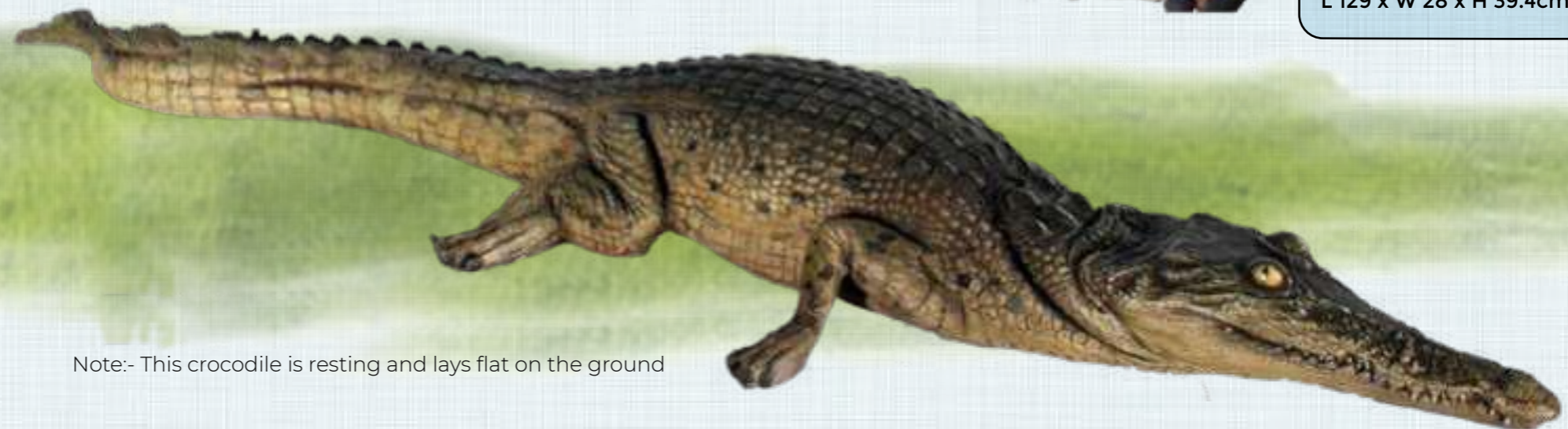
CROCODILE - RESTING - MOUTH CLOSED-4FT -



Crocodile walking near creek



080111
Crocodile 4ft walking
Mouth Closed
L 129 x W 28 x H 39.4cm - 2.8kg



Note:- This crocodile is resting and lays flat on the ground



Megafauna Reconstructions - Reptiles

QUINKANA FORTIROSTRUM CROCODILE-
WALKING - MOUTH CLOSED-6M

Coming
soon

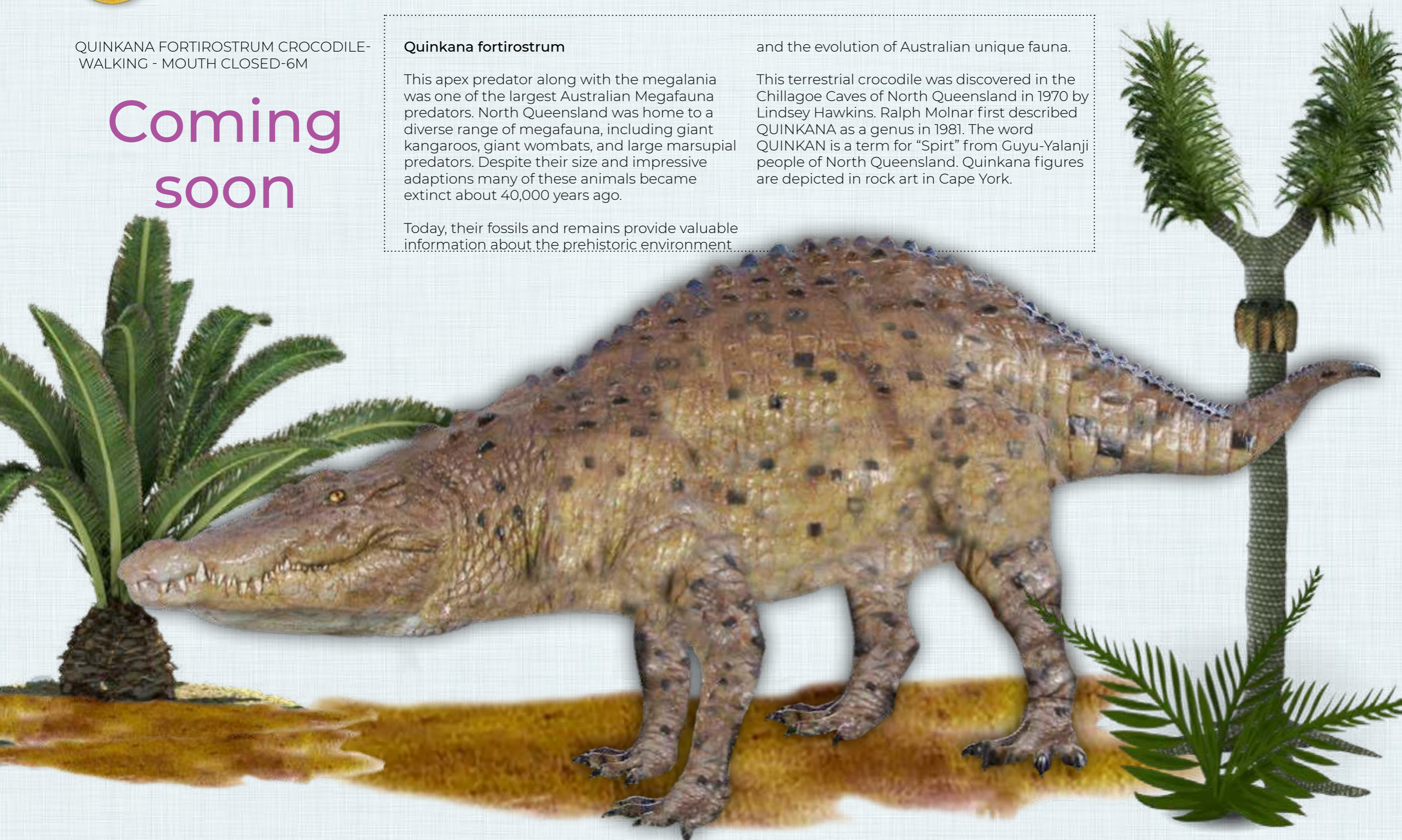
Quinkana fortirostrum

This apex predator along with the megalania was one of the largest Australian Megafauna predators. North Queensland was home to a diverse range of megafauna, including giant kangaroos, giant wombats, and large marsupial predators. Despite their size and impressive adaptations many of these animals became extinct about 40,000 years ago.

Today, their fossils and remains provide valuable information about the prehistoric environment

and the evolution of Australian unique fauna.

This terrestrial crocodile was discovered in the Chillagoe Caves of North Queensland in 1970 by Lindsey Hawkins. Ralph Molnar first described QUINKANA as a genus in 1981. The word QUINKAN is a term for "Spirit" from Guyu-Yalanji people of North Queensland. Quinkana figures are depicted in rock art in Cape York.



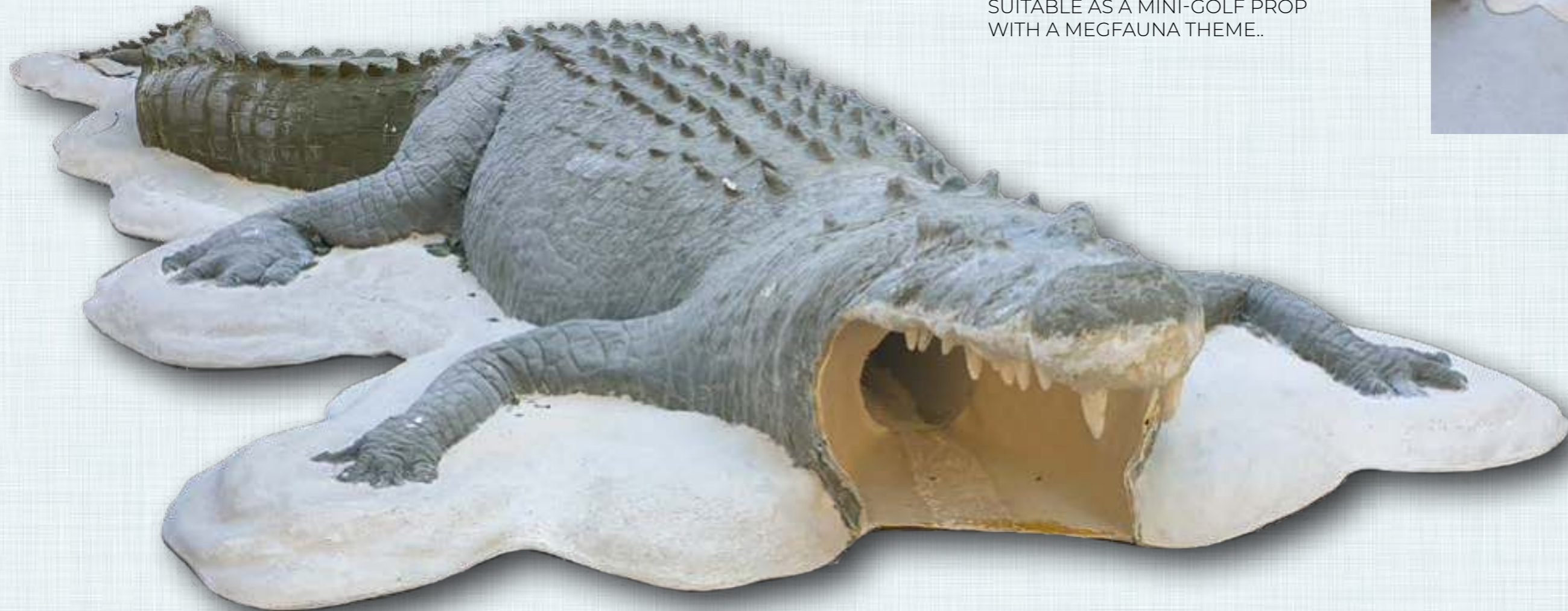


Megafauna Reconstructions - Reptiles

SALTWATER CROCODILE - 11 FT -
MOUTH OPEN - MINI-GOLF PROP



SUITABLE AS A MINI-GOLF PROP
WITH A MEGFAUNA THEME..





Megafauna Reconstructions - Reptiles

PARACYCLOTOSAURUS DAVIDI
GIANT LABYRINTHODONT
AMPHIBIAN

The complete fossil skeleton of this animal was found in St. Peters N.S.W in 1958 and remains one of the most complete amphibian skeletons ever discovered.

Measuring at over 2.25 metres it is from the Triassic Era.

It was sculpted as part of a prehistoric diorama for the Gondwana Rainforest Sanctuary in Brisbane.



Paracyclotaurus davidi
A Giant Labyrinthodont Amphibian



PARACYCLOTOSAURUS DAVIDI
Giant Labyrinthodont Amphibian



Labyrinthodont Amphibian
Illustration Reference



The complete fossil skeleton of this animal was found in St. Peters N.S.W in 1958 and remains one of the most complete amphibian skeletons ever discovered.
Measuring at over 2.25 metres it is from the Triassic Era.
It was sculpted as part of a prehistoric diorama for the Gondwana Rainforest Sanctuary in Brisbane.



Megafauna Reconstructions - Birds

FLAMINGO STANDING
FLAMINGOS WERE PART OF
THE PLEISTOCENE LANDSCAPE
IN ANCIENT AUSTRALIA .

THIS PIECE IS ABOUT
L 60CM X W 25CM H 80CM



FLAMINGOS - NATURAL



FLAMINGOS - PINK



Megafauna Reconstructions - Fossil Digs

AUSTRALIAN TERTIARY MAMMAL
FOSSIL DIG

Note - This Fossil Dig is shown vertically as they are an attractive wall decor, but it is also intended for horizontal use buried with sand.

130108
Fossil Dig
Australian Tertiary Mammal
Large Outdoor
L 250 x W 230 x H 60cm - 61kg

This Australian exploratory fossil dig casting is in the shape of Australia, showing prehistoric animals that roamed our lands many years ago.

It is intended as an educational play piece for indoor / outdoor area to be used as an exploratory dig for young palaeontologists to explore.

The fossils are positioned into the logical geographical locations of the Australian continent where they occurred.





Megafauna Reconstructions - Fossil Digs

AUSTRALIAN FRESHWATER
DOLPHIN DIG - EXTINCT MEGAFUNA

This Australian Freshwater Dolphin Dig provides an educational experience for young palaeontologists to understand the skeletal structure of our prehistoric freshwater dolphins that existed in our not too distant past.

130112
Fossil Dig
Australian Freshwater Dolphin
Large Outdoor
L 270 x W 130 x H 20cm - 61kg

Note - This Fossil Dig is shown vertically but is intended to lay flat on the ground and buried with sand.





Megafauna Reconstructions - Fossil Digs

HULOTHERIUM FOSSIL DIG
MOUNTAIN DIPROTODON

Note:

This version does NOT include sides. This allows for fossil to sit flat within an existing sandpit.



Length - 1800mm

Width - 1100mm



Fossil Dig in childcare centre

Note - This Fossil Dig is shown vertically as they are an attractive wall decor, but it is also intended for horizontal use buried with sand.



140093
Hulotherium Fossil Dig
(Mountain Diprotodon)
L 1800 x W 150 x H 1100cm - 40kg



Megafauna Reconstructions - Fossil Digs

DIPROTODON OPTATUM - GIANT MARSUPIAL FOSSIL DIG SANDPIT

Height of sandpit
Wall Sides - 190mm



Diprotodon Optatum - Giant Marsupial fossil dig sandpit is designed with a border to enable it to be filled with sand. This is to provide children with an interactive discovery play piece whereby the hidden skeleton can be gradually uncovered with brushes and spades.

Note - This Fossil Dig is shown vertically as they are an attractive wall decor, but it is also intended for horizontal use buried with sand.



Width - 15000mm

NWFDDO
Diprotodon Optatum
Giant Marsupial
Fossil Dig Sandpit
L 200 x W 1500 x H 19cm - 40kg



Length - 2000mm



Megafauna Reconstructions - Fossil Digs

GENYORNIS NEWTONI - LARGE FLIGHTLESS BIRD
- FOSSIL DIG SANDPIT

Length 1800mm

Width 1100mm



Genyornis Newtoni sandpit is designed with a border to enable it to be filled with sand. This is to provide children with an interactive discovery play piece whereby the hidden skeleton can be gradually uncovered with brushes and spades.



Note - This Fossil Dig is shown vertically as they are an attractive wall decor, but it is also intended for horizontal use buried with sand.

NWFDGN
Genyornis Newtoni
Large Flightless Bird
Fossil Dig Sandpit
L 180 x W 110 x H 190mm - 40kg

Height of sandpit
Wall Sides - 190mm





Megafauna Reconstructions - Fossil Digs

THYLACOLEO CARNIFEX - MARSUPIAL LION
FOSSIL DIG SANDPIT

Length 1800mm x Width 1100mm x Depth ? - Weight Approx 30kg

Height of sandpit
Wall Sides - 190mm



Thylacoleo Carnifex - Marsupial Lion sandpit is designed with a border to enable it to be filled with sand. This is to provide children with an interactive discovery play piece whereby the hidden skeleton can be gradually uncovered with brushes and spades.

Note - This Fossil Dig is shown vertically as they are an attractive wall decor, but it is also intended for horizontal use buried with sand.

Width - 1100mm

Length - 1800mm

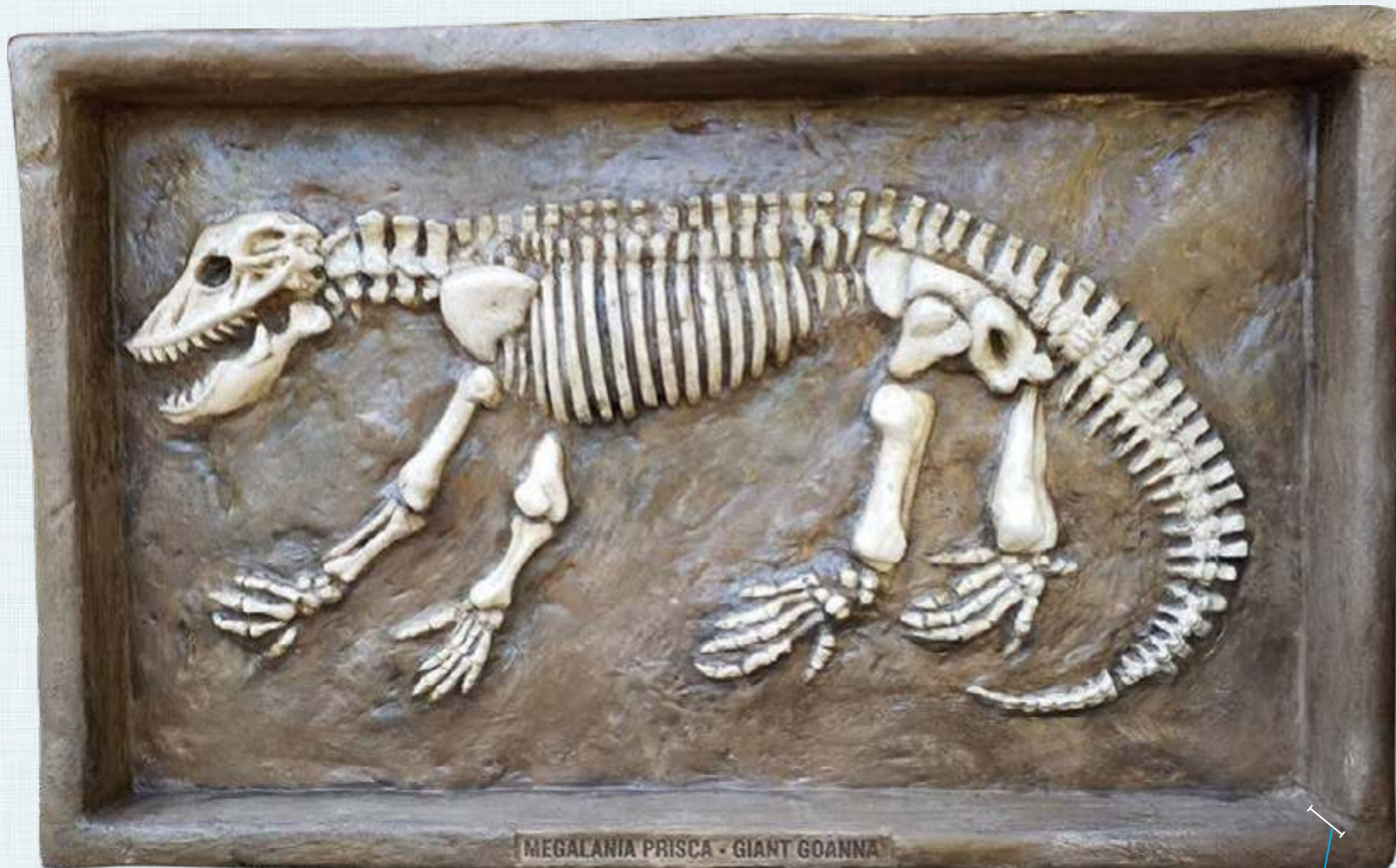
NWFDTC
Thylacoleo Carnifex
Marsupial Lion
Fossil Dig Sandpit
L 180 x W 110 x H 19cm - 40kg





Megafauna Reconstructions - Fossil Digs

MEGALANIA PRISCA - GIANT GOANNA
FOSSIL DIG SANDPIT



Width - 1500mm

Length - 2400mm

Height of sandpit wall
Sides - 190mm



Megalania Prisca - Giant Goanna Fossil Dig Sandpit is designed with a border to enable it to be filled with sand. This is to provide children with an interactive discovery play piece whereby the hidden skeleton can be gradually uncovered with brushes and spades.

Note - This Fossil Dig is shown vertically as they are an attractive wall decor, but it is also intended for horizontal use buried with sand.

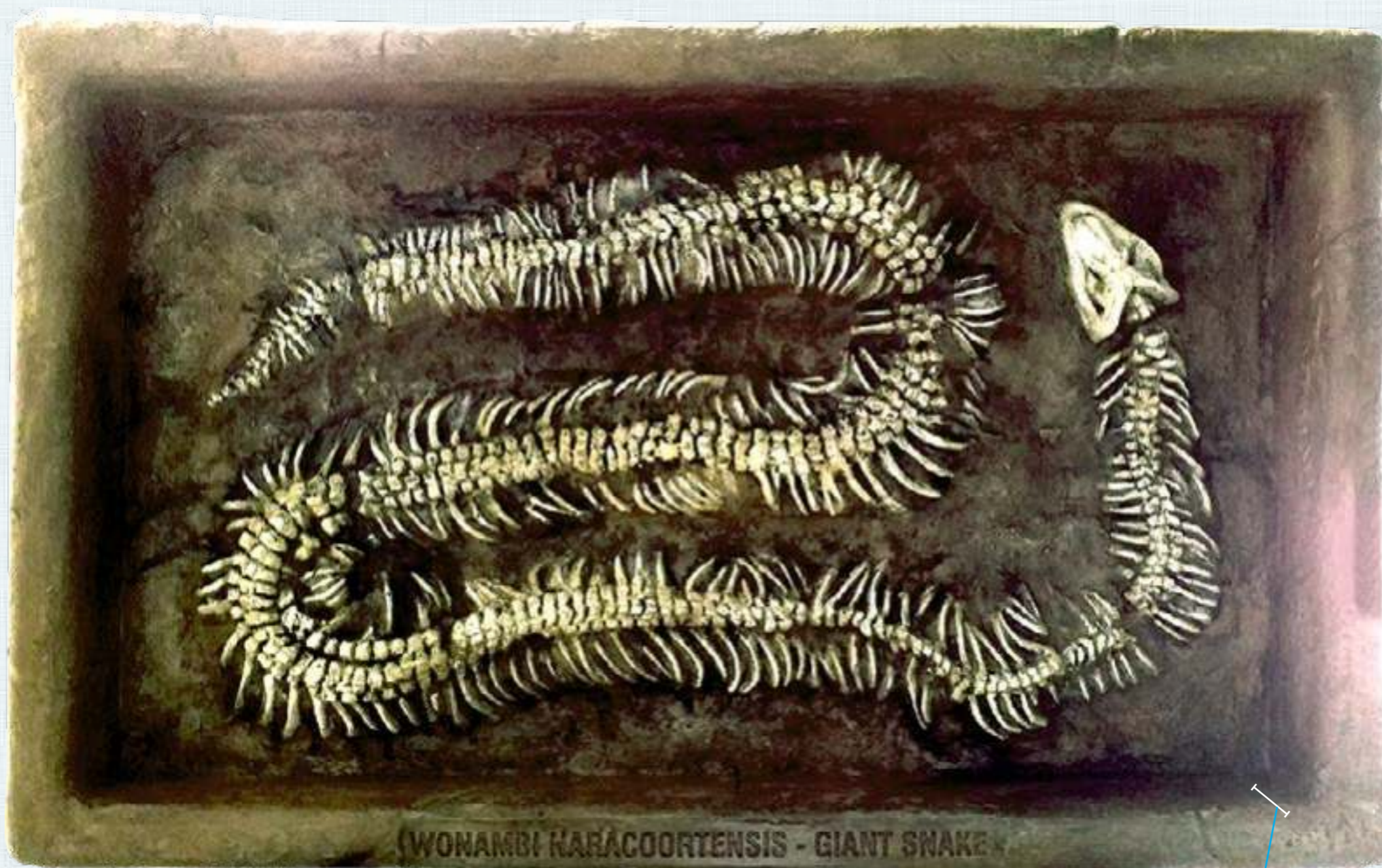
NWFDMP
Megalania Prisca - giant Goanna
Fossil Dig Sandpit
L 240 x W 150 x H 19cm - 40kg





Megafauna Reconstructions - Fossil Digs

WONAMBI NARACOORTENSIS - GIANT SNAKE FOSSIL DIG SANDPIT



WONAMBI NARACOORTENSIS - Giant Snake Fossil Dig Sandpit is designed with a border to enable it to be filled with sand. This is to provide children with an interactive discovery play piece whereby the hidden skeleton can be gradually uncovered with brushes and spades.

Note - This Fossil Dig is shown vertically as they are an attractive wall decor, but it is also intended for horizontal use buried with sand.

Width - 1100mm

Length - 1800mm

Height of sandpit wall
Sides - 190mm

NWFDWN
Wonambi Naracoortensis
Giant Snake Fossil Dig Sandpit
L 180 x W 110 x H 19cm - 40kg





Megafauna Reconstructions - Fossil Digs

PROCOPTODON GOLIAH - GIANT KANGAROO
FOSSIL DIG SANDPIT



Procoptodon Goliah - Giant Kangaroo Fossil Dig Sandpit is designed with a border to enable it to be filled with sand. This is to provide children with an interactive discovery play piece whereby the hidden skeleton can be gradually uncovered with brushes and spades.

Note - This Fossil Dig is shown vertically as they are an attractive wall decor, but it is also intended for horizontal use buried with sand.

Width - 1100mm

Length - 1800mm

Height of sandpit wall
Sides - 190mm

NWFDPG
Procoptodon Goliah
Giant Kangaroo Fossil Dig
Sandpit
L 180 x W 110 x H 19cm - 40kg





Megafauna Reconstructions - Fossil Digs

RIVERSLEIGH PREHISTORIC SWAMP SCENE
BRONZE FINISH

RIVERSLEIGH PREHISTORIC SWAMP SCENE - BRONZE FINISH

THIS PIECE IS ABOUT
L 100CM X W 5CM H 60CM

This is a 3 dimensional bas-relief interpretation of the painting of D-SITE by Dorothy Dunphy in the book Riversleigh by Mike Archer & Susan Hand & Henk Godthelp

A unique bronze wall plaque depicting Australian megafauna habitat with flora & fauna
Length 100cm x 5cm wide x 60cm High



Various finishes available





Megafauna Reconstructions

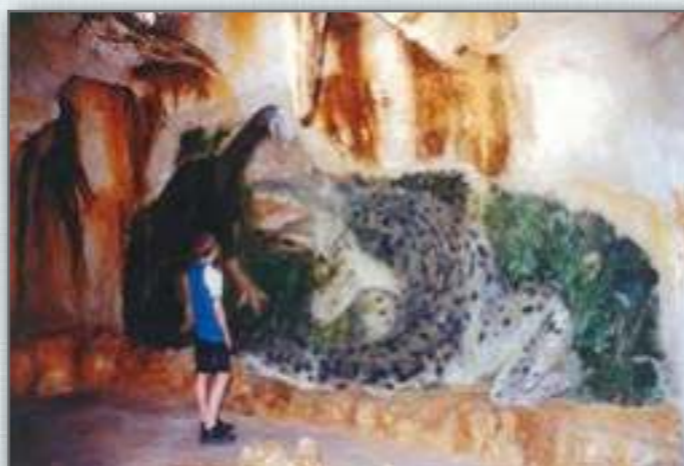
THE D-SITE INTERPRETIVE CENTRE
3D WALL RELIEF AT RIVERSLEIGH - NW QLD

GIANT CROCODILE ATTACKS
BARAWERTONENSIS - BAS RELIEF

THIS WOULD NEED TO BE MORPHED ONTO
A VERTICAL WALL AND REJOINED

THIS PIECE IS ABOUT
L 600CM X W 40CM H 250CM

This inside wall relief in 3D depicts a moment back in time when the giant terrestrial crocodile Baru Wickeni attacks a giant Dromornithid Ratite (Big Bird)



Natureworks was commissioned to design and build the entire interpretive centre and toilet block in 2003 for the world heritage listed D-Site. The hero piece for this site was the bas-relief of the giant crocodile and bird morphed into the cave structure.

Two different giant dromornithids also known as mihirungs, thunder-birds or demon ducks are known from Riversleigh. Shown in the plaque is Bullockornis or "Big Bird". The other bird species recorded was Barawertornis tedfordi. These huge flightless birds occurred from late Oligocene to Early Miocene.

D-site Interpretive centre Riversleigh exterior entrance



D-site Interpretive centre Riversleigh







Megafauna Reconstructions - Exotic

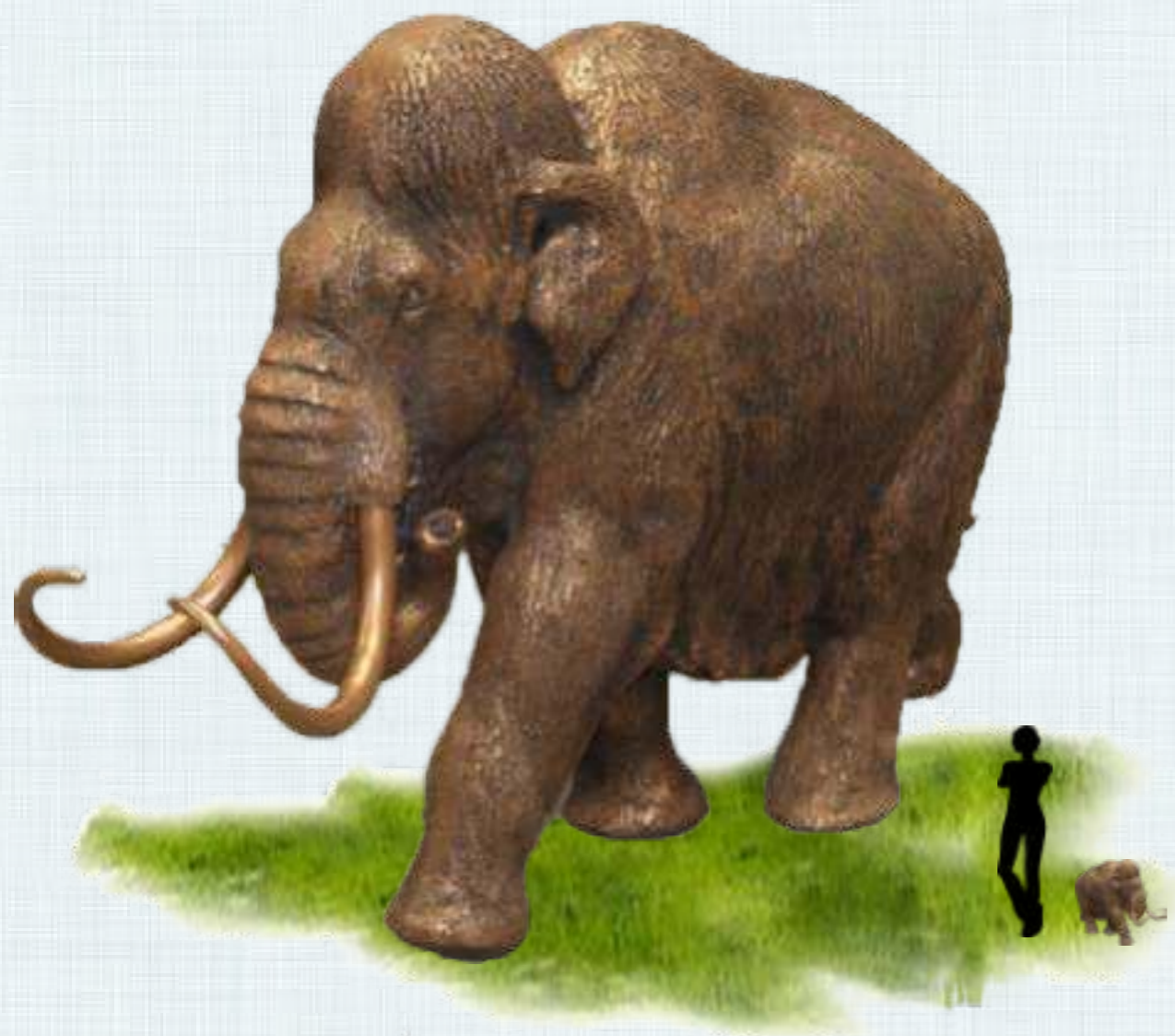
MAMMOTH - DEFINITIVE
NATURAL & BRONZE

MAMMOTH - DEFINITIVE - BRONZE

110014BZ
Mammoth - Definitive
Bronze Finish
L 70 x W 22 x H 49cm - 3kg

110014
Mammoth - Definitive
L 70 x W 22 x H 49cm - 3kg

MAMMOTH - DEFINITIVE - NATURAL





Megafauna Reconstructions - Exotic

SCRUB TURKEY - GIANT

DODO BIRD - STANDING ON
BASE

THIS PIECE IS ABOUT
L 71CM X W 53CM H 93CM

DODO BIRD - STANDING ON BASE





Megafauna Reconstructions - Exotic

DODO BIRD - EXOTIC



Rear View



The Dodo (*Raphus Cucullatus*) was a flightless bird which once lived on the island of Mauritius. The last bird was killed in 1681. It was slow, fat, flightless and tasty!

At 40lbs in weight it was a favourite food source for early sailors wanting to dine regularly on fresh roast chicken on their sea-journeys. It was just under 1 metre tall.

Due to the fact that the Dodo bird has become a symbol for man-made extinctions, Natureworks decided to undertake the reconstruction of this famous bird in 2015.

120007
Dodo Bird
L 71 x W 53 x H 93cm - 13.2kg



Megafauna Reconstructions

Megafauna Exhibit

1. Phascolonus Wombat
2. Wakaleo on log
3. Komodo dragon 3m
4. Bullockornis
5. Thylacine on rock
6. Zaglossus Giant Echidna
7. Meiolania Tortoise
8. Monitor lizard life size on tree out side of the exhibit

 <p>NATUREWORKS DESIGN • STUDIOS • ARTISTS • WORKSHOPS</p> <p>732 MT GLOIOUS RD HIGHVALE QLD 4520 PH: +61 7 3289 7555 FX: +61 7 3289 7788 E: info@natureworks.com.au W: www.natureworks.com.au</p>	<p>COPYRIGHT: NATUREWORKS Copyright Natureworks Pty Ltd ALL RIGHTS RESERVED Under no circumstances is this concept allowed to be copied in whole or part without written permission of NATUREWORKS NON DISCLOSURE APPLIES © Natureworks Pty Ltd</p>
--	---





Natureworks On-site Megafauna Swamp



Natureworks On-site Megafauna Swamp





Natureworks On-site Megafauna Swamp



Natureworks On-site Megafauna Swamp



Natureworks On-site Megafauna Swamp