

Report for Dedham Parish Council
on
Royal Square Consultation

February 2024



Plumb Associates
Communities – Environment

Table of contents		Page
Executive Summary		3
1. Remit & Context		
	Background to the project	5
	Royal Square - Current surface issues	5
2. Methodology		
	The consultation survey	6
	Survey drop off points	6
3. Survey Contents		
	Survey Results	7
	Survey Results Totals	8
	Open Survey Question 1, Survey Question 2.1+ 2.2	9
	Open Survey Question 3	10
	Open Survey Questions 4,5 & 6	11
	Analysis of open question text comments	15
	Themes emerging from open text responses	16
4. Conclusions		19
Appendices		
Appendix 1	Survey Template (attached separately)	21
Appendix 2	Other 'Option 4' sketches from respondents	27
Tables		
Table 1	Open Questions 4,5 & 6 survey themes	11
Figures		
Figure 1	Analysis of open question text comments	15
References		33

Executive Summary

Plumb Associates were approached by Dedham Parish Council to independently review the results of the Royal Square Consultation, having had experience of conducting and reviewing other consultations for a variety of clients in the public, charity, and private sectors.

The consultation was continuing a project started by previous Parish Council members in 2021, where designs for upgrading Royal Square were drawn up. A survey was distributed in the Parish Magazine and was available on the Parish Council website in November 2023 with a 6 week timeframe for replies and received 209 responses, 180 of which were from the CO7 6 postcode most relevant to the consultation. Response rates equate to approx. 20% of the 1,000 residential properties and businesses who received the Parish Magazine/survey.

The survey contained three design options to upgrade Royal Square and had several open-ended questions, allowing free text responses, many of which were detailed or had separate letters accompanying them.

Of those expressing a preference most people felt none of the plans were suitable for the village. The non-parking option 3 was the most divisive of the three plans, having most supporters but also most critics. Its supporters felt it would give the village more of a focal point as a square and not a car park, somewhere for residents to sit, meet and chat. Its critics were mainly concerned with the lack of parking, and the disturbances a market would bring, and for some respondents appeared to take some garden from neighbouring properties. Of the two parking options provided plan number 1 was marginally better received overall as offering least change and matching the current finish of The Drift.

These choices were further endorsed by a 52% scoring 0/1, when asked if Options 1+2 would improve parking in Dedham. (80 people from those responding to this question).

In terms of individual elements of any design being popular, mostly respondents felt leaving things alone or retaining and stabilising the existing gravel would be preferable.

Keeping the cobbles around the War Memorial was also a popular answer.

Respondents were concerned that the upgrade seemed unnecessary and wanted to know risk assessment evidence, costs and the lifespan of the various materials proposed before making further comment. Value for money in a cost of living crisis was also a concern, with some responses asking for monies to benefit the village overall as reduced Colchester City Council services were being redirected towards other high priority services.

Overall villagers felt passionately that the character of Dedham should not be compromised by using unsuitable building materials which might look out of place next to Grade 1 listed buildings, or which would make it look more urbanised.

The ability of proposed materials to withstand constant usage, and the threat of sandstone slabs getting stained by oil, slippery or icy in winter was also a concern, as

was the orientation of the spaces meaning cars needed to reverse onto footpaths to get out of newly defined spaces.

Parking and the volume of cars and traffic was the biggest concern for most respondents. In an Area of Outstanding Natural Beauty villages like Dedham need to achieve a balance between serving the needs of its local population and meeting the needs of tourists the local businesses also serve.

Whilst some public houses have limited customer parking most shops and facilities do not, making access to the chemist, post office and local shops a daily necessity.

The option for some form of short stay parking was suggested, enough to allow local people to stop and shop, not long enough for visitors or tourists to take up parking spaces for long periods.

Some hierarchy of parking priorities was suggested overall: residents in the village getting permits and access to the High Street and Royal Square before visitors/tourists who should be using the public car parks only.

Mill Road Public Car park is only 3-5 minutes' walk away from Royal Square with 127 spaces (2 for coaches) and would be the obvious choice for most visitors and tourists, unless they require disabled parking, which some respondents also said was lacking in the High Street/Royal Square. Whilst there are 6 disabled parking spaces at Mill Road the pavements and footpaths are quite narrow and slightly uphill towards the High Street, with overgrown vegetation an occasional hurdle. For mobility impaired residents needing a short stay, dedicated bays would no doubt be of benefit in the high street.

Mill Pond car park a little further on from Mill Road car park has an additional 30 spaces and is less than a 10 minute walk to Royal Square for visitors/tourists.

Of those who thought the upgrade should be a lower priority for the use of Parish Council funds, a long list of other uses benefiting the village overall was given, including more public toilets, facilities and services around the river, better overall maintenance of footpaths, signage, drains and vegetation. Some of these services come under the remit of Colchester City or Essex County Council.

12% of those responding (17 people) had no concerns about the potential disruption the project might bring, and felt the current surface looked messy and was hard to navigate with a wheelchair or buggy. Many were keen to see the project commence and were thankful to the Parish Council for progressing the project. There were still queries about the costs of each proposal and one request for information on income generation and increased Tourism with option 3.

1. Remit & Context

The Upgrade of Royal Square was originally discussed by previous members of the Dedham Parish Council in 2021, who wanted to carry out maintenance as the custodians of the square. The condition of the pavement surface and potential upgrade has been a standing item on the parish Council minutes and in the budget for capital works which are publicly available since that time. Nigel Cowlin Landscape Planning and Design had already designed the Drift footpath across the park in resin bound gravel. The Parish council asked him to design some options for the Royal Square as a follow-on phase. He designed two options for a 12 vehicle carpark using a revised orientation perpendicular to the highway, as the current layout of parking spaces at right angle to the highway are too close to the memorial for some of the cars to reverse. The two parking designs were subsequently posted publicly on the parish council website in 2021, and a third non parking/occasional market option was added in March 2022.

The current surface is loose gravel on an impermeable bituminous base. This can migrate onto the highway and cause issues with stone chips. Highways authorities do not allow an unbound gravel so close to the main highway and being on a slope makes the situation more complicated. Continuing with the same materials (gravel on tarmac) as a remediation measure would not appear to be an option, therefore the Parish Council looked at new designs with a natural paving or resin bound gravel.

2. Methodology

The consultation about three design options was held in November/December 2023 to ascertain the views of local villagers before going further. A survey was created in-house by Dedham Parish Council. This was circulated in the parish magazine at the start of November, which went to approximately 1,000 properties in the postcode area CO7 6, both residential and businesses. There was a 6-week timeframe to respond, ending on the 31st December 2023. The survey included visuals for three design options (two with parking and one as a non-parking option). The survey was also circulated on the Parish Council website and was picked up by Dedham Vale Society and links to it were circulated to their members.

Drop off points for the surveys were:

- The Parish Clerk (address supplied)
- The Church and The Co-op, both of which had collection boxes
- By email

Parish Council minutes record that a public exhibition was held on Monday 4th December from 2pm prior to the Parish Council meeting.

There was limited social media promotion: Dedham Vale Voice and Dedham Notes disseminated links to access the survey on Facebook. Dedham Vale Society suggested a template for responses to be used by its members, on Questions 1+2. This was observed on the survey responses where some text had been copied verbatim.

See the Survey Template at Appendix 1

3. The Survey

Question 1 was an **open question** with a free text box, which asked respondents to review the plans and then express a preference with their reasoning.

Question 2 was **closed** and had two parts:

- In 2.1 respondents were asked to score each of the proposed options between 1 and 5 (with 1 being strongly disagree and 5 being strongly agree).
- In 2.2 respondents were again asked to score between 1 and 5 if the proposed carpark redesign plans would make it easier to park at Royal Square (with parking design options 1 and 2).

Question 3 **was open ended**, and asked for elements of specific designs respondents would like to see incorporated into another design option.

Question 4 **was open ended** and asked what concerns respondents had, if any, about the plans to upgrade Royal Square taking place?

Question 5 **was open ended** and asked what considerations would you most like the Council to take on board when they're reviewing plans?

Question 6 **was open ended** and asked for any further thoughts' respondents might have on this topic.

Finally, space for respondents' details was left (optional). This has allowed the plotting of postcodes to see the reach of the survey, the majority of which were from the CO7 6 postcode area.

Survey Results – Totals

209 survey responses were returned in varying stages of completion:

Some fully completed, some partially completed, some were attached to fuller letters which space on the survey form did not allow for, some comments were received by email.

- 183 surveys were from the CO7 6 Postcode (one survey contained 6 names which counted as 6 responses)
- 20 were completed with a postcode outside CO7 6, and
- 6 further which were anonymous.

These numbers represent approximately:

- 18% of the 1000 surveys distributed within the CO7 6 area, or
- 20% from the total of all responses. This includes 20 surveys outside the CO7 6 area and may have been driven by promotion by the Dedham Vale Society which has 699 followers on its Facebook page, and the Dedham Vale Voice which has 6k members on its Facebook page.

(Where % are given in this report, these have been rounded up or down to the nearest whole number).

Because of the open ended nature of 5 of the 6 survey questions many detailed responses were received, covering a wide variety of topics. Some responses were a mixture of survey and accompanying letter.

A retrospective survey was created by Plumb Associates with topic headings created to capture the number of responses and themes across all questions. Respondents often commented on themes from other questions on a different answer, therefore comments captured through the retrospective questionnaire were amalgamated afterwards by topic, making it clearer to see how many people felt most strongly about what issue, overall. All 209 responses were then manually uploaded into the online survey giving a clearer picture of the responses in a graph format.

NB. The totals for the following figures are taken from the 180 responses giving a CO7 6 postcode. (Totals from the out of area postcodes or anonymous emails giving no postcode at all would not significantly change the overall results).

Survey Question 1

Of the people that answered this question, the highest scoring answers were:

- 34% (50 people) expressed concern that a 'No change option' had not been included in the survey and disliked all three design options.
- 18% (26 people) liked Option 3 (non-parking option) as one that brought back Royal Square as a focal Point in the village, not just as a car park.
- 16% (24 people) preferred Option 1 of the parking options as the one that offered the least change but with some suggestions about changing the parking orientation.
- 21% (14%) disliked all design options and wanted to retain/stabilise the present gravel surface.

These results are further endorsed by the answers to the closed question regarding scoring of the three design options in Question 2.

Survey Question 2.1

Of the people that answered the question, 'The proposed plans will improve Royal Square' favourable votes were all in low figures:

- Non-parking option 3 had the highest score of 5 (strongly agree) with 24% (36 people) but also the highest score of 1 (strongly disagree) of 68% (103 people) and was the most divisive option of the those presented.
- Option 1 had 16% (25 people) voting a score of 5 (strongly agree), but also 48% (75 people) scoring it 1 (strongly disagree) Votes scoring 2,3 or 4 made this option more evenly distributed between those strongly agreeing it would improve Royal square and those that thought it wouldn't improve parking.
- Option 2 had 52% (80 people scoring it 1, and only 12% (18 people) scoring it a 5. Votes scoring 2,3 or 4 made this option slightly less evenly distributed between those strongly agreeing it would improve Royal square and those that thought it wouldn't improve parking than Option 1.
- Ultimately scoring across the board was in low figures which echoes the comments made in Question 1, that most people either wanted no change or as little as possible (retaining/stabilising the current surface)

Survey Question 2.2

This question only related to parking design options 1 and 2 and asked if the proposed carpark redesign plans would make it easier to park at Royal Square? Of the people that answered the question the scoring was in low figures for

- Strongly agreeing 20% (31 people)
- Strongly disagreeing 46% (81 people) with a further 6 % (9 people) making a point of scoring this Zero
- 12% (9 people) scored this a 3 – showing ambivalence towards any benefits.

Survey Question 3

This question asked if there were any elements of a specific design option which people would like to see incorporated in another design option?

Of those that answered the top scoring answer with 31% (30 people) was

- Leave things alone/There should be an option for 'No Change', along with various additional comments for why this should be the case (also echoed throughout other questions).
 - Parking availability must be maintained
 - Don't change the character of Royal Square
 - We don't need a seating area we have a park behind it!
 - Dedham is a village not a town
 - The Drift was finished (and carried out) in a most shoddy manner. The edges were ragged + did not match up causing multiple trip hazards
 - Spend the money on a better located tourist car park landscaped out of sight

12% (12 people) said they wanted

- Some way of retaining/stabilising the historic gravel surface to prevent migration onto roads/

A further 12% (12 people) said

- Keep existing cobbles; the look is in keeping with memorial + stops motorists driving too close to it/ If parking is retained you could keep existing highway land and cobbles.

Open Survey Questions 4, 5 + 6

Question 4 What concerns do you have, if any, about the plans to upgrade Royal Square taking place?

Question 5 What considerations would you most like the council to take on board when they're reviewing plans?

Question 6 We are interested in any further thoughts you might have on this topic. Please share them below

These three questions being open ended elicited many detailed responses that cross referenced each other. They have been amalgamated here for culminative totals.

NB: % are expressed as a proportion who answered each question.

Theme	Question 4	Question 5	Question 6	Totals
Potential disruption/ Lack of parking during the works/parking is removed (after works/needed for welfare of residents + businesses/ Hopper service would be good /What makes Dedham special is its businesses, people rely on being able to park nearby (not as far as Mill Lane)	15% (22 people)	21% (29 people)	5% (5 people) 2% (2 people)	(58 people) 43%
Waste of money/ Use money for other things*	11% (15 people)		37% (41 people)	(56 people) 48%
Unnecessary (Risk Assessment?) Exercise already cost thousands of pounds Controversial nature of their proposals + lack of evidence or need/Need for change – evidence of accidents?	15% (22 people)	2% (2 people)	6% (6 people) 2% (2 people)	(32 people) 25%
Concerns on practicality of parking design/Reversing out onto footpaths	9% (13 people)	10% (13 people)		(26 people) 19%
No Concerns/Square needs to be improved – good to see this beginning/Ensure it is completed on time/Thank You	12% (17 people)		2% (2 people) 4% (4 people)	(23 people) 18%
Cost of each option + lifespan? Value for Money	7% (10 people)	7% (9 people)		(19 people) 14%
Plans affect the character of the village	6% (8 people)	8% (11 people)		(19 People) 14%
Accidents: preventing slips + trips with materials that ice over level surfacing for the mobility restricted/more trees = more leaves: slippery in wet weather Gravel argument is specious		7% (9 people)	7% (7 people)	(16 people) 14%

Theme	Question 4	Question 5	Question 6	Totals
Option 3 would be nice but still need parking/Yes to 3, no central space in the High Street to sit and take some time/keeping parking spaces for people who bought houses with no parking is crazy/make it available for parking when not in use by market stalls/		3% (4 people)	2% (2 people) 7% (7 people) <1% (1 person) <1% (1 person)	(15 people) 14%
Views of RS residents + implications for Grade 1 listed buildings		9% (12 people)		(12 people) 9%
Keep the Cobbles /preserve the integrity of the war memorial/ I put cobbles round the memorial and its worked all these years	2% (3 people)	5% (7 people)	2% (2 people)	(12 people) 9%
Finishes: Durability of bonded/bound gravel/Oil stains +Tyre marks on sandstone Unsuitable modern materials against old buildings.	5% (7 people)	3% (4 people)		(11 people) 8%
No Option 3 – not enough parking as it is/Dedham supports surrounding Hamlets too/Got trees + seating at Churchyard /Takes some of our garden/Grammer school garden	<1% (1 person)		3% (3 people) 5% (5 people)	(9 people) 9%
Residents Parking Permit for High Street and Assembly Rooms/Make Royals Square Residents only		2% (3 people)	5% (5 people)	(8 people) 7%
No to making village more of a car park / minimise number of cars in the village/restrict visitors/safer for pedestrians	3% (4 people)	3% (4 people)		(8 people) 6%
Drainage Concerns Water run off (NB: Also comes up in Waste of money/spend it on other things)	4% (5 people)			(5 people) 4%
Landscaping + Appearance: Keep the Holly Tree. No to new trees/balance between practical and scenic/natural appearance	2% (3 people)	2% (2 people)		(5 People) 4%
Plenty of parking already /Is it necessary		3% (4 people)		(4 people) 3%
Tidiness/Aesthetics/Clean up the outer areas of the village too		3% (4 people)		(4 people) 3%
Other options suggested*			3% (3 people) <1% (1 person)	(4 people) 4%

Theme	Question 4	Question 5	Question 6	Totals
Pedestrianised areas as Option 3 should be included/ With some sheltered seating even if semi -permanent or seasonal/Would be in favour of banning cars from Dedham High Street (Except for shop workers and disabled)? Would be great if Royal Square was car free		2% (2 people)	2% (2 people)	(4 people) 4%
No Market Stalls Parking Noise, who will police it? Trade lost from existing traders in Dedham, great inconvenience to residents who live in the square and close surrounding areas/A market/seating area swill just attract more tourists + associated issues to the heart of the village			3% (3 people)	(3 people) 3%
DPC should concern itself more with what residents deal with daily	<1% (1 person)	2% (2 people)		(3 people) 3%
Encourage a regular market day/would love more farmers market options		2% (3 people)		(3 people) 2%
Make it a short stay car park for visits to shops/chemist etc. 20-30 min		2% (3 people)		(3 people) 2%
Disabled parking bays – at least 2		2% (2 people)		(2 people) 2%
Preserve what is good and add what is better/ If you can maintain trees in Option 3 why can't you do it now for footpaths?		2% (2 people)		(2 people) 2%
Environment/sustainable: If you must opt for a car park outcome then make it exclusively Electric vehicles (to encourage Environ-friendly) No parking at all will encourage Bus use. Bins. Bike Racks		2% (2 people)		(2 people) 2%
Don't upgrade just resurface	1.5% (2 people)			(2 people) 1.5%
Royal Square Covenant queries	1.5% (2 people)			(2 people) 1.5%
Leave Highway alone , and area around memorial, belongs to highways	1.5% (2 people)			(2 people) 1.5%
Options 1+2 parking could be suspended if a market is held	1.5% (2 people)			(2 people) 1.5%
Parking kept wherever possible. It has market charter pop up events can still occur.	<1% (1 person)			<1% (1 person)

Theme	Question 4	Question 5	Question 6	Totals
Stop discouraging cars!	<1% (1 person)			<1% (1 person)
To fully realise how nice this will be better graphics needed: photographs or similar projects	<1% (1 person)			<1% (1 person)
Concerned the vocal minority will prevail!	<1% (1 person)			<1% (1 person)
Timescales – do work quickly		<1% (1 person)		<1% (1 person)
Get a bonafide contractor – not those that do pothole repairs/ subsidence + drainage, previous repairs short term + ineffective		<1% (1 person)		<1% (1 person)
Toilets down by the river? Managing seaside area? Underground bins with openings at street level situated near river as they do in Europe spend money on stopping the riverbank becoming a public beach		<1% (1 person)		<1% (1 person)
Remove the awful cobbles around the base of the war memorial as they are horrible to walk on		<1% (1 person)		<1% (1 person)
Control current footfall don't try to boost it		<1% (1 person)		<1% (1 person)
Dedham should be vibrant, developed economically/ Dedham needs to attract visitors/History information		<1% (1 person)		<1% (1 person)
Would be great if playpark could be upgraded/renewed		<1% (1 person)		<1% (1 person)
This questionnaire will as you know fall through the cracks with only a few responding and not always the right few! Maybe more than one public consultation {needed} at more than one venue.		<1% (1 person)		<1% (1 person)
I see option 3 was an afterthought!		<1% (1 person)		<1% (1 person)

*List of suggestions on what else the money could be spent on can be found below

*List of other options to the plans proposed listed below

Analysis of open question 4, 5 & 6 text comments

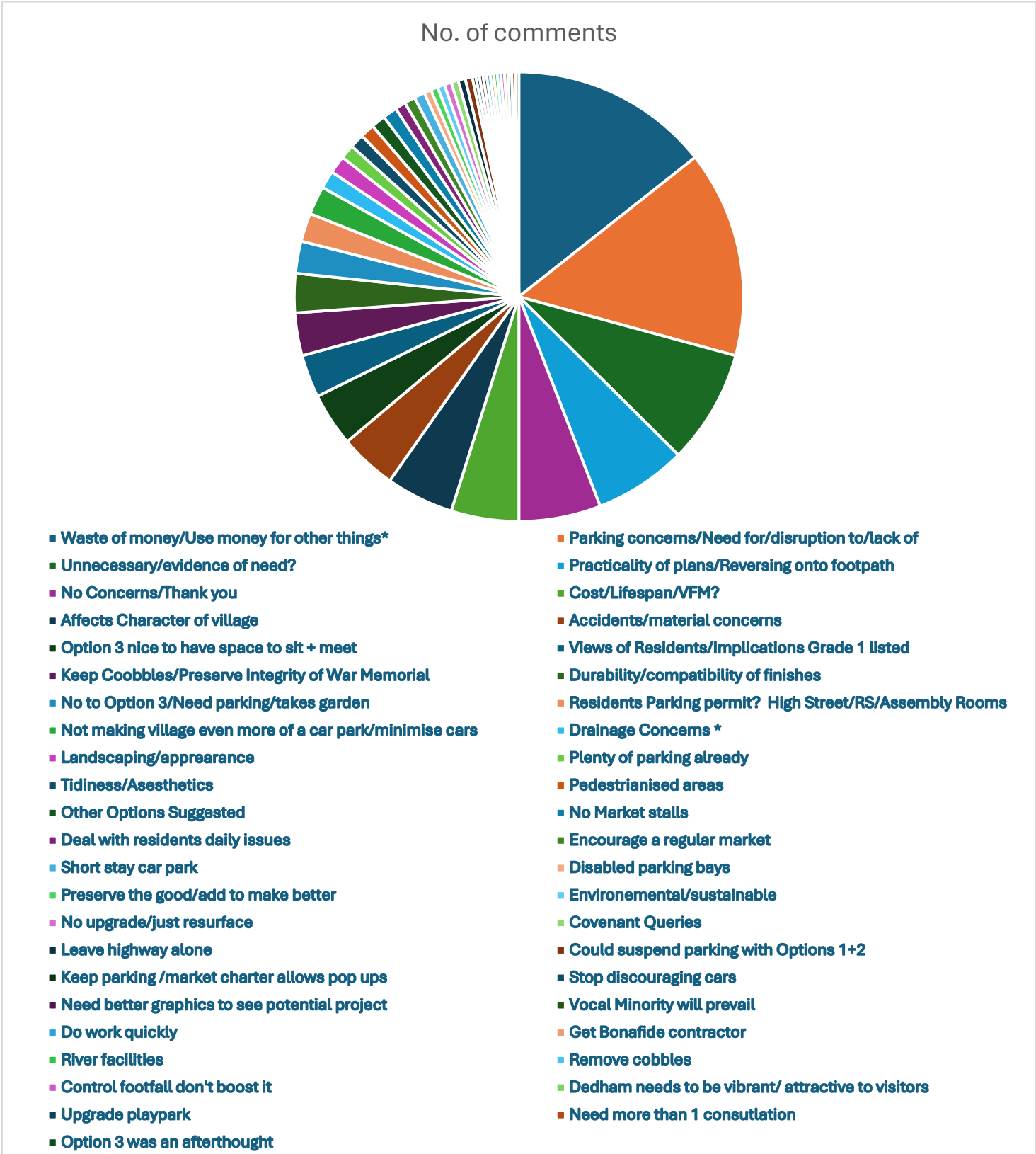


Figure 1 – Note - List runs left to right, most to fewest response themes

Themes emerging from Open Text Questions 4, 5 & 6

Use {Royal Square Upgrade} money for other things:

Beyond the closed questions on parking option preferences, the highest scoring theme overall was that Dedham villagers would prefer to see Parish Council Funds spent on other items, and confusion over why the Royal Square upgrade took priority over other more day to day issues. Some of the items listed below will come under the remits of Colchester Borough and Essex County Councils.

General parking issues

The seasonal influx of tourists and day trippers already present a challenge to Dedham. Insufficient visitor parking is a concern and street parking surrounding the centre of Dedham would appear to be troublesome. The provision of a Hopper service connecting Manningtree Rail Station with the villages of Dedham Vale was mentioned, as was the Coggeshall service, self-funding and running since 2016.^{i ii}

Short stay parking

Need for some short stay car parking in the street say 30 min remainder to stay 2 hours. make parking during the day short term and free for 30 mins shopping, then charges thereafter.

Additional Parking suggestions

Some respondents wanted the Parish Council to buy additional land (the field) and turn it into a proper facility, whilst others felt there was already enough parking (Mill Road) usage of which needed to be encouraged, particularly by tourists/visitors.

It was also suggested that having marked bays on the high street might help parking, which appeared to have helped on the church side of the village.

Fourth 'Plan' Options

- Create a parking and flexible community space.
- Bonded gravel, with the current parking orientation, marked bays, memorial as is
- If you must opt for a car park outcome, then make it exclusively Electric vehicles (to encourage Environ-friendly)
- No parking at all will encourage Bus use.
- Sketches provided (see Appendices)

River Facilities

Alleviating river issues in summer, with better bin provision. Villagers feel it becomes dirty overcrowded and unpleasant by the river. Cleaning + tidying up under the river bridge was also mentioned.

Summer Tourism

Villagers feel that the summer tourism has negative impacts for them and requires additional facilities and services to cope. Isolated respondents felt protection was needed

for locals, who get abuse from tourists who are defecating in public. There were several comments decrying the quality of life in Dedham in the summer.

Toilets

Several respondents requested public toilets in Mill Lane car park, as visitor numbers had increased these were needed.

War Memorial

In addition to the feelings of most people to leave the War Memorial as it stands (with cobbles) there was a request by several respondents to clean it, as it was going green with moss and was hard to read the names.

Drainage

(This item also came up as an item of concern in Q4). Part of respondents concerns over upgrading Royal Square was the ability of new materials to cope with rainwater, currently absorbed into the loose gravel surface. There were many general comments on the current state of drains generally in Dedham: some blocked outside Munnings all the way up the hill for at least 3 years, others blocked drains with grass growing through the grills and gulleys requiring cleaning out on Castle Hill. One respondent cited clearance of ditches to assist road water run-off, while another requested solving the recurring subsidence and drainage first In Royal Square).

Signage

As a general theme of maintaining the appearance of the village, cleaning, restoring, and replacing dirty, broken, or missing finger signposts, knocked down speed and warning signs was mentioned. One respondent asked if there would be new signage to explain new arrangements Royal Square arrangements? There were queries on where the defibrillator is, and requests for countryside signage explaining strict codes for rubbish/cutting wire fences.

Footpaths/Vegetation maintenance/Street Sweeping

Many comments on general tidiness and maintenance of the village centred on the need better vegetation management, keeping footpaths cut and tidy from overhanging branches, maintaining pavements around the village where build up is making them narrow and dangerous to use, upgrading the local footpaths and spending money employing someone to sweep up leaves instead of relying on volunteers. Cutting back hedges throughout the village some of which are a pedestrian hazard and obscure road warning signs, Attention to overhanging trees as they can affect power supplies. Maintenance of uneven paving slabs, cleaning bus shelters, upkeep of parking bay markings, yellow lines and general road marking, keeping the main car parks clean, employing additional road, path, gutter sweepers and litter collectors, and removing discarded verge debris, were all seen as higher priorities in the village.

Lighting and Potholes

One respondent said the lighting down the Drift has highlighted how dark and potentially dangerous (potholes in the road) the rest of the Drift is between the sports pavilion and Southfields footpaths.

Rubbish Bins/Dog Waste bins

There were several requests for more/larger bins around the boatyard which needed collecting more regularly at peak times, also dog waste bins at each end of footpaths.

Sports Facilities

One respondent suggested spending the money on the school-football pitch to make it all weather

Local vulnerable people

A few respondents were aware that the current economic climate has impacted on Colchester City Council's financial position, and they have many more very important demands on their resources, such as the sick elderly + infirm. Please re-allocate the villages rate payers monies to causes where all residents will benefit and pride in our village will be restored.

4. Conclusions

The issue of the Royal Square Upgrade has been a topic of debate for Dedham for several years, and in trying to comply with Highways regulations the Parish Council is in a complicated position. The current council members are continuing an agenda item from 2021, which many long standing villagers see as unnecessary, and of which Royal Square residents are understandably wary. As an area of Outstanding Natural beauty, the Dedham Vale is promoted as an Essex gem and tourist destination. Naturally this brings conflict to those who reside in the village, with the influx of seasonal visitors whom local businesses welcome.

As the Royal Square upgrade appears to have divided opinions on the need for improvements, further communication needs to take place with residents now the consultation has highlighted their biggest concerns: need/cost/drainage issues/orientation of spaces/reversing onto footpaths.

Serving the needs of car users is obviously the biggest issue for those who responded to the survey, but better use of current facilities and a hierarchy of who parks where and for how long might offer a good compromise while ongoing talks around Royal Square continues. Disabled parking should also be a priority for those in the High Street.

Buying additional land for parking could certainly become an income generator after purchase but may bring with it many more of the visitor types being criticised for poor behaviour by survey respondents. If a dedicated Hopper service is considered too costly to run, sharing one with a neighbouring area (like Coggeshall) may make the running costs more attractive and might encourage some visitors to use public transport and leave their cars behind.

The option of a non-parking square allowing markets had some supporters, as much for giving the village an enhanced visual focal point and place for residents to stop and rest or chat with other villagers. Whilst it is true that there are other benches for people to use (in the churchyard), they are not in the centre of the village where some residents might like to see the hustle and bustle of daily life occur. It was also clear that for some the option was supported to keep Dedham from looking more of a car park than it already does.

Many of the items listed by respondents as being worthy of higher priority for spending than the Royal Square upgrade do appear to fall under the Parish Council's remit which is published on their website. This includes Drainage, Highways, Litter, Tourism, Traffic Calming, Transport and War Memorials.

The list of items in the survey responses could serve as a starting point for a revised village action plan (Parish Website contains one dated 2011 with a progress report in 2012) or act as starting point for further consultation on village priorities. This would go some way to showing respondents to the survey a feeling their voices have been heard and allow them to fully appreciate the scale of expectation against the budgets to fulfil them.

Appendices

Appendix 1 Survey Template



Dedham Parish Council

Public Consultation for redevelopment of Royal Square

Questionnaire

Introduction

Dedham Parish Council are reviewing plans to upgrade the Royal Square.

As custodians of the Square we have concerns about the loose gravel surface and the risk that it could migrate onto the road, causing safety issues.

Also the manoeuvrability of cars with the current parking layout perpendicular to the road is poor, particularly given the restrictions around the war memorial.

To assess the design options available we are considering plans prepared by a landscape architect to replace the loose gravel with a natural stone paving and / or bonded gravel, as well as turn the direction of parking so it's parallel to the road.

We are also considering an alternative scheme to remove the carpark altogether and replace it with a market square, including formal trees and seating.

We are interested in the views of all Dedham residents and businesses and would appreciate 1-2 minutes of your time to answer some short questions.

Proposal's

The outline proposals for the Square for consultation purposes are shown on the following three drawings, attached to this questionnaire:

Plan Drawing 1

Carpark redesign option 1 - bonded gravel with central paved area

Plan Drawing 2

Carpark redesign option 2 - whole area in natural paving

Plan Drawing 3

Non-parking sketch 3 - bonded gravel with sandstone flag central area and formal trees

Questions

1. Firstly, please review these three plans. Which of these do you prefer and why?

2. Bearing in mind the plans you've just seen for Royal Square, on a scale of 1 to 5, to what extent do you agree or disagree with the following, with 1 being strongly disagree and 5 being strongly agree.

2.1 The proposed plans will improve Royal Square?

OPTION	SCORE 1 - 5
Plan Drawing 1 - Carpark redesign option 1	
Plan Drawing 2 - Carpark redesign option 2	
Plan Drawing 3 - Non-parking option	

2.2 The proposed carpark redesign plans will make it easier to park at Royal Square?

OPTION	SCORE 1 - 5
Plan Drawings 1 and 2 - Carpark redesign	

3. Are there any elements of a specific design option which you would like to see incorporated in another design option?

Questions

4. What concerns do you have, if any, about the plans to upgrade Royal Square taking place?

5. What considerations would you most like the Council to take on board when they're reviewing plans?

6. We are interested in any further thoughts you might have on this topic.
Please share them below:

Thank you for your time, if you have any other questions or thoughts please get in touch.

Your Details

Name:

.....

Address:

.....

.....

.....

Postcode:

Date:

Please return to the clerk at
Dedham Parish Council by
31st December 23

Post to

Carol Harbach
The Gem
Nayland Road
Great Horkesley
Colchester
CO6 4HA

Or use collection box in
Dedham Church or Co-op

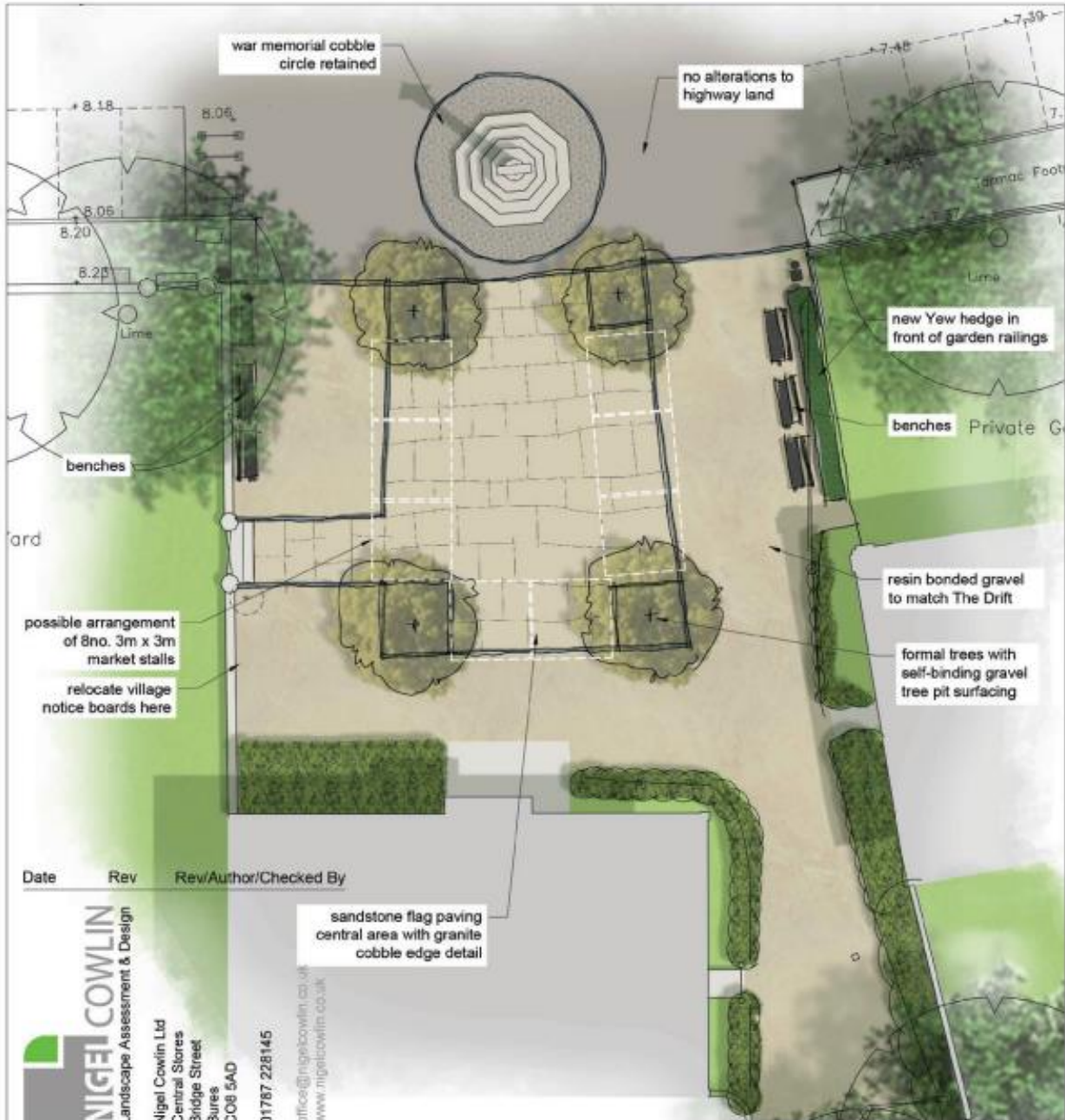
Option 1



Option 2



Option 3



Date	Rev	Rev/Author/Checked By

NIGEL COWLIN
 Landscape Assessment & Design
 Nigel Cowlin Ltd
 Central Stores
 Bridge Street
 Bures
 CO8 5AD
 01767 228145
 office@nigelcowlin.co.uk
 www.nigelcowlin.co.uk

client:
Dedham Parish Council

project:
Royal Square

drawing title:
Non-parking option sketch design 3

scale: 1:200 @ A4 drawn by: NC

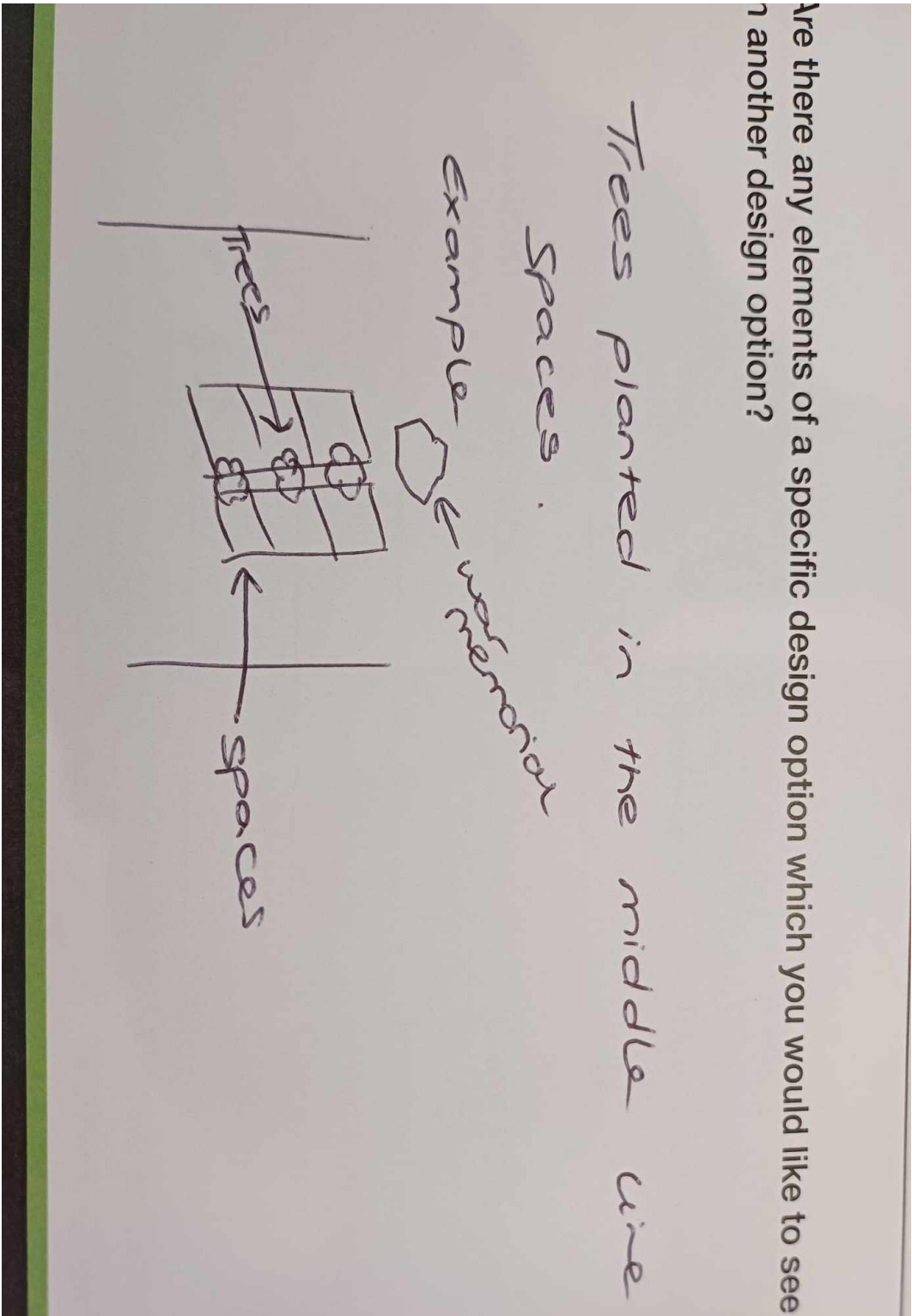
date: 03 March 2022 chkd by: AK

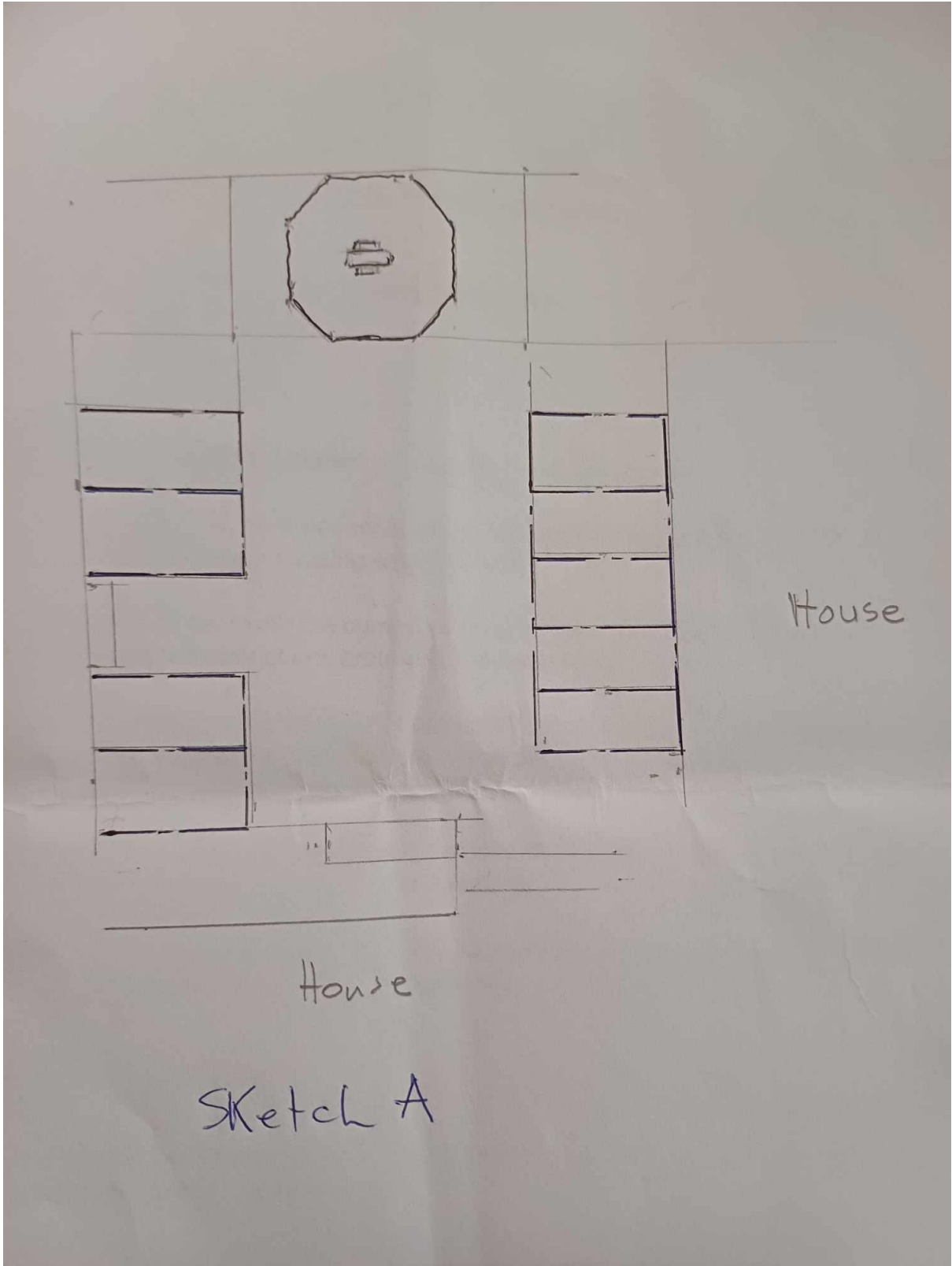
drawing number: NC19.583-143 revision: -

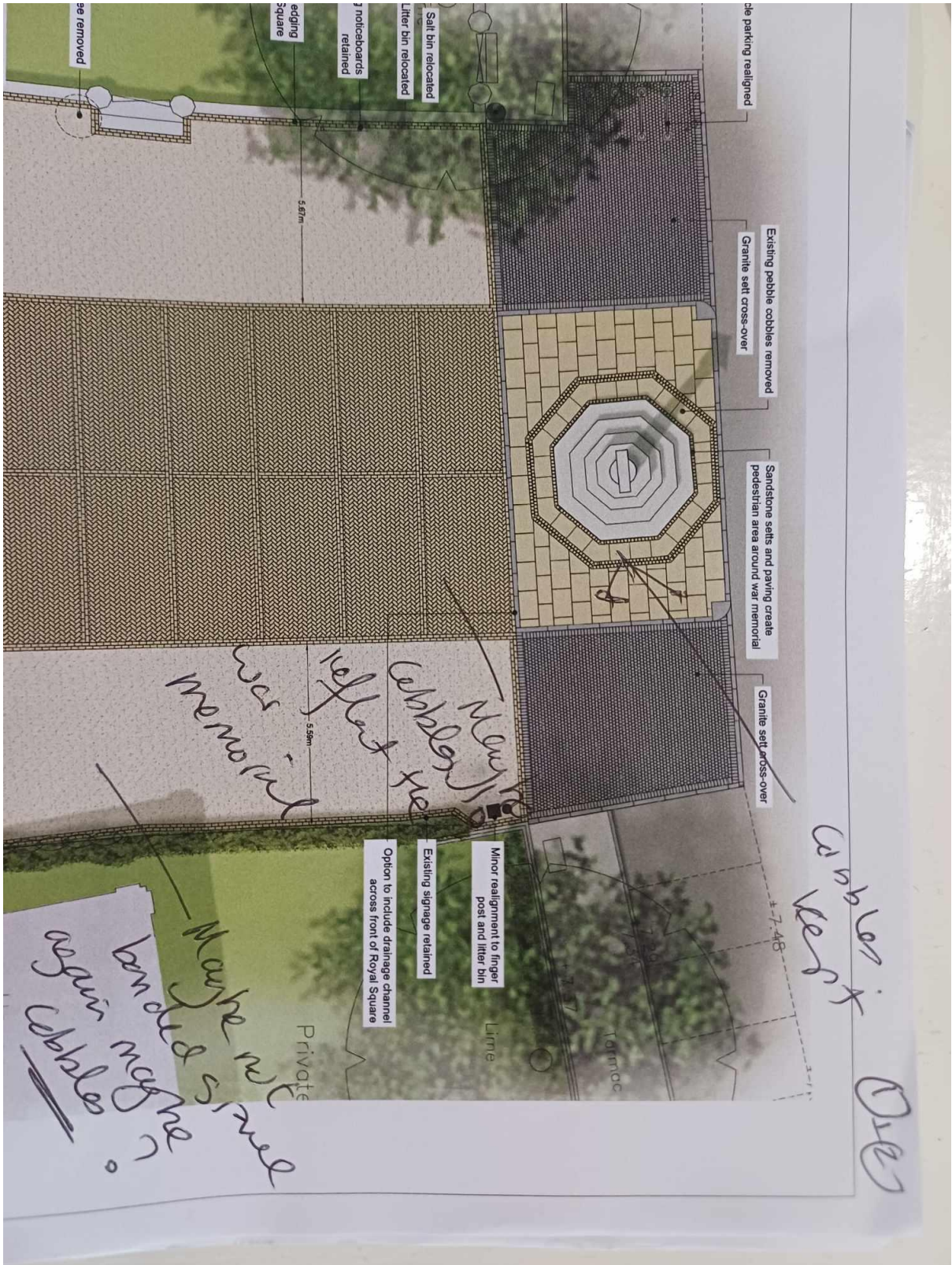


C:\DROPSBOX\NC PROJECT FILES\2019\19.583 ROYAL SQUARE\07 NC PROJECT DRAWINGS\100 5_SKETCH DRAWINGS\19.583-5143 NON-PARKING OPTION SKETCH DESIGN 3

Appendix 2 - Sketches of '4th Options' from respondents







References

ⁱ <https://www.harwichandmanningtrestandard.co.uk/news/8434231.manningtree-hopper-bus-extended-for-visitors/>

ⁱⁱ <https://www.coggeshallbus.co.uk/>