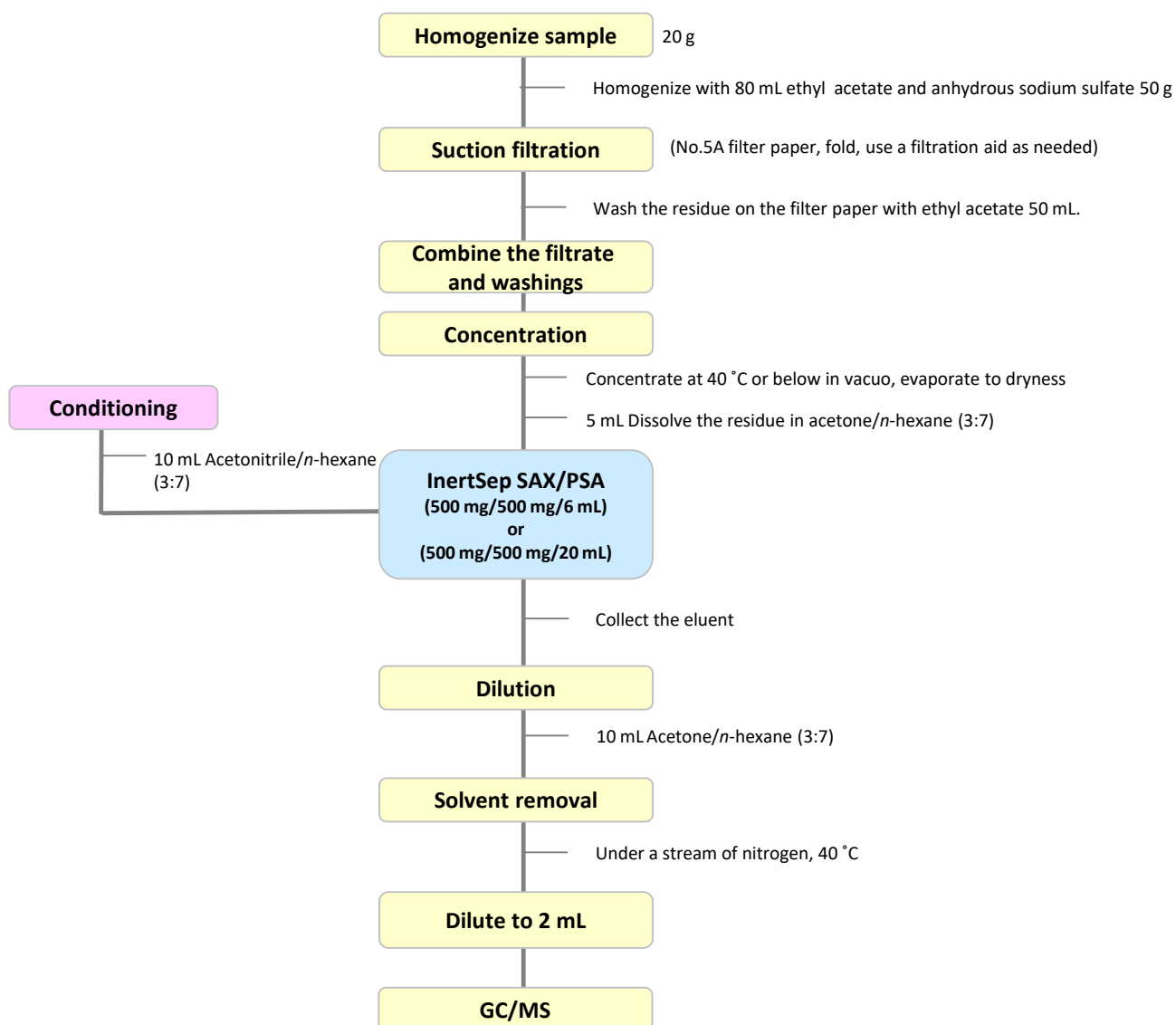


In the early 1990s, a rapid screening assay using SAX/PSA laminated mini-columns known as the LUKEII method was developed by the US FDA. In Japan, it has been recognized and utilized as a highly useful screening assay. The flow diagram below shows an example of the use of ethyl acetate as an extraction solvent for rapid sample pretreatment prior to GC-MS analysis for pesticide residues (with reference to the FDA's LUKE II method).

•1. Flow diagram of solid phase pretreatment

[Example of pretreatment of pesticide residues using SAX/PSA minicolumns]



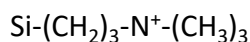
NOTE) This is a method developed by GL Sciences based on literature information. Reference: Journal of Health Science, 51(5) 617-627 (2005)

2. Products for solid-phase extraction

[InertSep SAX/PSA]

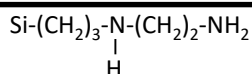
InertSep SAX PSA is a two-layer cartridge for SAX and PSA. InertSep SAX is a solid phase in which a trimethylaminopropyl group is attached to silica gel, and InertSep PSA is a solid phase in which an ethylenediamine N propyl group is attached to silica gel. By making it into two layers it is suitable for sample cleanup for residual pesticide analysis, etc.

InertSep SAX



Mean particle size : 45 μm
 Carbon : 10 %
 Surface Area : 450 m^2/g
 Pore volume : 0.7 mL/g
 Pore size : 60 \AA
 Ion exchange capacity : 0.7 meq/g
 PKa : (-)
 PH range of use : 2 - 8
 Remarks : OH - ion pair

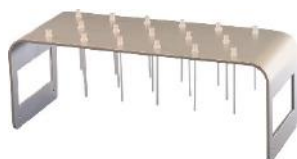
InertSep PSA



Mean particle size : 65 μm
 Carbon : 11.5 %
 Surface Area : 450 m^2/g
 Pore volume : 0.7 mL/g
 Pore size : 60 \AA
 Ion exchange capacity : 1.5 meq/g
 PKa : (10.1, 10.9)
 PH range of use : 2 - 8

Product name	Column size	Qty.	Cat.No.
InertSep SAX/PSA Recommended for this application	250 mg / 250 mg / 3 mL	50 bottles	5010-68100
	500 mg / 500 mg / 6 mL	30 bottles	5010-68101
	500 mg / 500 mg / 20 mL	20 bottles	5010-68104
	1 g / 1 g / 20 mL	20 bottles	5010-68105

[GL-SPE Gravity Flow Manifold]



This is a simple and inexpensive manifold that is optimal for gravity based solid phase extraction. It is fitted with 24 integrated polypropylene luer fitting delivery tips.

Product name	Qty.	Cat.No.
GL-SPE Gravity Flow Manifold	Sets	5010-50430

[Empty reservoirs with adapters]



Recommended for this application

A convenient empty reservoir with the adapter already attached, for connection to a solid phase column.

Product name	Qty.	Cat.No.
25 mL reservoir with 1,3,6 mL adapter	12	5010-60015
50 mL reservoir for 12,20 mL adapters	12	5010-60016
200 mL reservoir for 60 mL adapters	12	5010-60017

GL Sciences disclaims any and all responsibility for any injury or damage which may be caused by this data directly or indirectly. We reserve the right to amend this information or data at any time and without any prior announcement.

GL Sciences, Inc. Japan

22-1 Nishishinjuku 6-Chome
 Shinjuku-ku, Tokyo,
 163-1130, Japan
 Phone: +81-3-5323-6620
 Fax: +81-3-5323-6621
 Email: world@glsc.co.jp
 Web: www.glsciences.com

GL Sciences B.V.

De Sleutel 9
 5652 AS Eindhoven
 The Netherlands
 Phone: +31 (0)40 254 95 31
 Email: info@glsciences.eu
 Web: www.glsciences.eu

GL Sciences (ShangHai) Ltd.

Tower B, Room 2003,
 Far East International Plaza,
 NO,317 Xianxia Road,
 Changning District.
 Shanghai, China P.C. 200032
 Phone: +86 (0)21-6278-2272
 Email: contact@glsciences.com.cn
 Web: www.glsciences.com.cn

GL Sciences, Inc. USA

4733 Torrance Blvd. Suite 255
 Torrance, CA 90503
 Phone: 310-265-4424
 Fax: 310-265-4425
 Email: info@glsciencesinc.com
 Web: www.glsciencesinc.com

International Distributors

Visit our Website at www.glsciences.com/distributors