

Semiahmoo: A Premier Residential Resort Community in the Pacific Northwest

SEMIAHMOO NEWS

WHAT'S INSIDE

President's Message	2
General Manager's Note	3
Maintenance Corner	3
Did you Know?	4
Into the Wild	5
Recipe of the Month	6
Semiahmoo Sights	7
Community Spotlight:	10
Summer Fun & Events	11



STAFF DIRECTORY

General Manager - Aaron Hasson - 360-371-7796 ext. 3 gm@srahoa.com

Architectural Standards Administrator - Carroll Ballard - 360-371-7796 ext. 1 ascadmin@srahoa.com

Office Administrator - Lori Thorne - 360-371-7796 ext. 2 lori@srahoa.com

Administrative Assistant - Elisa Claassen - 360-371-7796 ext. 4 elisa@srahoa.com

Maintenance Director - Leroy Dougall - 360-371-7796 ext. 5 maintenance@srahoa.com

Board of Directors - board@srahoa.com



PRESIDENT'S MESSAGE

Heading Safely Into the Holiday

Fireworks Unlawful in All of West Blaine

The Semiahmoo Resort Association (SRA) is in an urban forested area. Practicing fire prevention helps our community reduce wildfire risk and protect lives and property. In the City of Blaine, it is unlawful to discharge fireworks in all areas west of Shintaffer Rd including:

- inside the Semiahmoo gates
- all of the Semiahmoo Spit & Marina
- all parks and beaches

Consequences of Violations:

- violating fireworks laws can result in fines, confiscation of fireworks, and potentially misdemeanor or even felony charges
- individuals may also be held civilly liable for property damage or injuries caused by their fireworks

SRA Community Rule #22:

All fireworks and explosive devices are banned behind the gates of Semiahmoo (effective 06-12-06). Effective on July 1, 2017 all fireworks and explosive devices are banned on Semiahmoo Spit as well as in all other areas within the Semiahmoo Resort Association Community.

SRA Fireworks Fines:

- fine up to \$250 for first offense
- up to \$500 for each repeat offense

If you see anyone setting off fireworks, please:

- immediately call the Blaine Police non-emergency number 360-676-6911 or 911 as appropriate
- report the incident to the SRA office gm@srahoa.com

Let's have a —Safe and Happy— 4th of July.



President Debbie Paquin

Welcome to the Board and to Semiahmoo: Mark and Luc

Board Member Appointment

Luc Clement has been appointed to the SRA Board of Directors. Luc has a work background as a military officer and is currently a tech industry executive. He also volunteers as Gleneagle Villas I and II Vice President. Welcome Luc!



Luc Clement

Semiahmoo Resort, Golf and Spa General Manager



Mark Andrew

Mark Andrew, Regional Vice President for Columbia Hospitality, is back in the role of Semiahmoo Resort, Golf and Spa General Manager (GM). He previously served as GM in 2013-2016. Welcome back Mark!

GENERAL MANAGER'S NOTE



Aaron Hasson

The second half of the 2025 Dues assessments will be sent out after the 4th of July weekend. Please remember that the second half dues are due by August 5 to avoid any late fees assessed to your account. If you have not already done so and wish to have your dues taken directly from your bank account, please contact the office to get the necessary paperwork to fill out as soon as possible. Also, new gate codes are on those statements and will take effect at the end of July.

The first half of 2025 financials are looking good, and SRA expenses are tracking well to our budget as we move towards summer and fall. The General Manager has been working with the Finance Committee to finalize the Budget for 2026

and to have a completed budget ready for Board approval in late July / early August.

With the weather getting nicer, the grass and foliage growing, landscaping companies returning to their regular schedule, we ask that you remind your landscape teams to remove all yard clipping and debris. This does not mean to blow them into the streets or dump them on another property within the Semiahmoo community. We appreciate your cooperation in this matter.

As we near the 4th of July holiday, we want everyone to enjoy their holiday weekend, but the SRA Board of Directors would like to remind all community members that fireworks are illegal in the City of Blaine and inside the communities of Semiahmoo. Please report any incidents of firework use to the Blaine Police Department.

If you have any questions or concerns, please do not hesitate to contact the SRA office and speak with anyone in the office.

Have a great Summer.



MAINTENANCE CORNER

In April, May, and June, the Maintenance team accomplished the tasks listed below.

- Maintained the SRA roads with the street sweeper.
- Cleaned gated entries, flower beds, parks, and traffic circles to start planting for the summer. Summer planting will be completed in June.
- Cleaned and cleared gate tracks and inspected gate rollers and bearings for wear and tear.
- Added two new employees to the Maintenance Team. Joe, who will be full-time and Jordyn (Clove) who will be our summer help until September.
- Started the summer routine for mowing so that each area can be attended to regularly.
- Started overseeing work on the SRA Beach Stairs at Boundary Ridge repairs.

Upcoming tasks listed below.

- Start up normal street sweeping schedule on Friday each week.
- Review Roads and curbs throughout community to devise plans for summer repairs as needed.



Photo of a double rainbow over the SRA Center the end of March by SRA Maintenance member Mike Larson.

DID YOU KNOW?

Submitted by Patricia Oliveros of the Communications Committee

We hope you are enjoying the summer season! As the warm weather continues, we want to remind you of a few key things:

Watering Restrictions: The city of Blaine, Washington, has a voluntary watering schedule in place from June 1st to September 15th. Residents with odd-numbered street addresses can water on Wednesdays, Fridays, and Sundays, while those with even-numbered addresses can water on Tuesdays, Thursdays, and Saturdays. Mondays are designated as non-watering days. This schedule aims to conserve water during peak summer demand.

Upcoming Events: We encourage you to support local events in our community, city and county. Below are links of interest.

- <https://www.semiahmoo.com/experiences.php#!/>
- <https://www.blainechamber.com/events>
- <https://www.whatcomtalk.com/bellingham-events-calendar/>

Townhalls. The SRA welcomes your participation in the upcoming meetings.

<https://www.semiahmooresortassociation.com/meetings-and-events/>

Contact Information: Do not hesitate to use the contact page on our website if you have any questions.

- <https://www.semiahmooresortassociation.com/contact-us/>

Brian Morton of Drayton Hillside saw this beaver exploring the low tide mud flats of Drayton Harbor in early April. The beaver came ashore behind Morton's home for about 45 minutes, got back in the water and swam away. Elisa Claassen, in the office, saw a family of deer in early April.



INTO THE WILD: WHERE ARE ALL THE BEES?

BY JENNIFER PLOMBON
OF THE ENVIRONMENTAL COMMITTEE

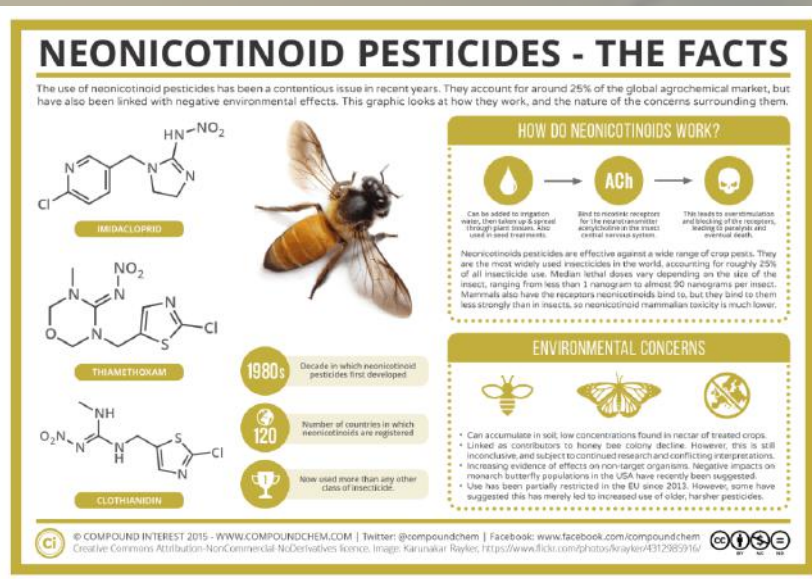
It has been estimated that up to 70% or more of honeybee colonies in the U.S. will be wiped out this year, a devastating loss. The causes are parasites, habitat loss, climate change and pesticides, and this huge loss of bees is a huge loss for everyone, since they will be unavailable to pollinate the millions of plants that depend on bees to reproduce. The loss of bees is worldwide and accelerating.



Bees are important for pollination. (Online image.)

Most food crops are now pollinated by commercial bee businesses, which haul their hives around the country to the crops that are ready for pollination. But since 2006, there has been a steady decrease of bees returning to their hives after going out to forage. Called “Colony Collapse Disorder,” the causes are many and unclear, but the USDA says that “sublethal exposure” to pesticides is one of the biggest threats to bees. The deadliest pesticides

are neonicotinoids, or neonics, which are widely used throughout the world. They are formulated to attack the nervous systems of insects, and bees are insects, so they attack and harm bees as well as the pests they are meant to kill. They are taken up by the plant and remain in the plant tissues and soil, often for years. One single kernel of corn treated with neonics contains enough active ingredients to kill 80,000 bees! They also harm birds, butterflies, salmon, bats, Orcas, and many other species, and as an active ingredient in some pet flea collars, have been implicated in the deaths of over 1700 pets. Since 2021, The Center for Biological Diversity has been asking the EPA to ban neonics and New Jersey, Maine and Nevada have severely restricted their use; they are banned in the European Union and Switzerland. And now



Information from www.compoundchem.com.

Washington State has stepped up; starting January 1, 2026, neonics may not be used on plants, trees or turf in this state except by licensed applicators and for the production of a food crop. They may be used to treat an urgent pest threat, but there are restrictions on that use as well. While not as helpful as an outright ban, this will curtail the casual use of neonics on non-crop plants by private, unlicensed citizens who may lack the knowledge to use them safely and effectively. The bill is Substitute Senate Bill 5972, and in the months to come before January, the Environmental Committee will be educating Semiahmoo residents and the landscapers we use about this bill and its implications. You can read the Center for Biological Diversity’s statement here: <https://tinyurl.com/39d575r7>

RECIPE OF THE MONTH:

Kelli Moquin submitted this recipe. She is a resident of St. Andrews Green.



Ingredients

- ♦ 180 g flour (1 1/2 cup)
- ♦ 67 g old-fashioned rolled oats (3/4 cup)
- ♦ 1/2 tsp baking powder
- ♦ 1/2 tsp baking soda
- ♦ 1/2 T salt
- ♦ 113 g butter (1 cup)
- ♦ 213 g brown sugar (1 cup)
- ♦ 1 tsp vanilla
- ♦ 1 large egg
- ♦ 75 g chopped Medjool dates (1/2 c)
- ♦ Flaky sea salt


The Communications Committee solicits recipes from members and from area chefs for this portion of the SRA Newsletter.

Oatmeal Date Smash Cookies

Preparation

- In a medium bowl, whisk together flour, oats, baking powder, baking soda, and salt.
- In a large bowl, whisk the melted butter, sugar, and vanilla until smooth and homogenous. Add the egg and whisk until fluffy, combined and creamy. Add the dry ingredients and use a flexible spatula to stir until no flour is visible.
- Line a baking sheet with parchment paper. Scoop the dough into 15—50g pieces, place on a prepared baking sheet, cover and refrigerate for at least one hour or up to two days.
- Bake at 375 degree for 10 minutes until puffed and golden brown. Remove from the oven and use a flat spatula to press each cookie flat — eliminating puffing.
- Return the cookies to the oven and turn the oven off. Leave the cookies inside for approximately four minutes — until the cookies are slightly darker and puff back up.
- Remove the baking sheet from the oven. Press the cookies flat again and sprinkle with flaky sea salt. Let the cookies cool completely on the baking sheet before serving.

SEMIAMMOO SIGHTS



WELCOME TO SEMIAHMOO GOLF & COUNTRY CLUB

Join One of Washington's Premier Private Golf Clubs in the Northwest

SUMMER IS HERE & CONSIDER JOINING THE CLUB — Enjoy golf at the Pacific Northwest's premier private golf course, designed by Arnold Palmer. Semiahmoo Golf & Country Club offers members the experience of private country club life with unlimited access to golf, driving range, tennis courts, and a seasonal swimming pool. It is open year-round, and this 7,005-yard tree-lined masterpiece allows golfers to

(Below) Photographer Linda Gray is the featured artist at the Semiahmoo Golf & Country Club for May and June. For the last 13 years she has captured the region's natural landscapes — from misty forests to rugged coastlines — and seamlessly blended them with elements of fashion photography. She also leads private adventures through Pacific Northwest Guided Tours. (Linda Gray)



The Great Blue Heron Grill at the Golf Club offers weekly specials from Chef Kelly and her kitchen including Sunday brunch. Wednesdays are Prime Rib Night. Thursdays are fish specials at lunch. Closed Mondays and Tuesdays. Book for special events.



GREAT BLUE HERON GRILL

Open to the Public, Come Dine with Us!

Additional July and August events are still being planned by the Semiahmoo Resort and Golf Club and Golf Course. Please check with Kristen Gomes, lead concierge, at the Resort or see the website for more details at "Experiences" to sign up as soon as possible to secure your spot. You can also check with the Golf Course for any tournaments and events. The SRA Weekly will also alert to special opportunities Fridays. (Photos above courtesy of the Resort.)

WELCOME TO SEMIAHMOO

TRADEMARK COLLECTION BY WYNDHAM



Above: Looking for family-friendly fun? Daily movies at the Discovery Theater at the Resort, featuring a 156" HD Projector and 50 comfortable leather chairs. Movies are shown daily at 5:30 p.m. (G or PG) and 8:00 p.m. (PG-PG13). Open to Resort guests and no reservations are required. Selections noted at the front desk. Check out the ongoing fitness classes, pickleball, and guide bird tours also offered to guests and fitness club members.

Below: Shake up your night at Semiahmoo Resort with a fun and hands-on mixology class in the Victoria Room. Join the expert mixologist for unforgettable evenings of cocktails, creativity, and some friendly competition. Dates: May 5th for Cinco de Mayo, June 20 for Summer Solstice, July 29 for Mid-Summer, Aug. 3 for Watermelon Day. Sign up online.



Left: Summertime moves entertainment from the inside to the outdoors with live music on Seaview Lawn between the hotel, Packers, and the beach.



The outdoor schedule — with BBQ from June 26-Sept. 12. Times: 5-7 p.m.

- June 26—Joe & Kelly
 - July 4—The Shakedown
 - July 10—Cory Philips
 - July 24—Ron Hardt & Jimmy Wright
 - July 31—Alex Britton
 - Aug. 7—Charlie Partin
 - Aug. 14—Free Harmony
 - Aug. 21—Joe & Kelly
 - Aug. 28—Cory Phillips
 - Sept. 12—Alex Britton
- Additional live music available at Packers Kitchen + Bar.

Town Hall Meetings March 29 & June 14, 2025



What is the purpose of Town Halls? The SRA membership voted for the Board of Directors to sponsor Town Hall meetings throughout the year to be more accessible and address issues valued by the community. The first Town Hall of 2025 had a general theme and also followed up on a concern voiced at a Town Hall in 2024

regarding wildfire awareness and prevention. More detailed information on this topic was covered in the June 2025 Town Hall. The following Town Halls are being planned: August/September (at a date and time to be determined) to discuss the 2026 SRA Budget and October 25 for the Annual General Meeting. All members are encouraged to attend in person or via Zoom. Past meetings can be watched on the SRA YouTube channel. (Photos by Elisa Claassen and Darcee Woods)



A magnificent rainbow was visible early in the morning in March. It was especially vivid and stayed for what seemed a longer stint over the Semiahmoo Park beach. According to Wikipedia, the primary rainbow arc shows red on the outer part and violet on the inner side. In double rainbows, such as here, the second arc has the order of the colors is reversed. (Elisa Claassen)

**SRA
UPCOMING**

**BOARD
MEETINGS**

7/16, 8/20, 9/17 AT 4 P.M.

NEW TIME

SRA CONFERENCE ROOM

**JOIN IN PERSON OR VIA
ZOOM**



**MEETINGS ARE ALSO POSTED ON YOUTUBE FOR
FUTURE VIEWING.**

COMMUNITY SPOTLIGHT:
MEET ROBYN & DAVID EMMERSON
AND RON & SHARON LIGHTERINK

SEVERAL FAMILIES WHO HAVE LEFT — AND RETURNED

Submitted by Kathy Stauffer
of the Communications Committee

It's always interesting to see who decides to call Semiahmoo home and how they discovered our community. The number one way that people hear about Semiahmoo is from their friends who live here. Such was the case for David and Robyn Emmerson who visited good friends from Tucson, Donald and Susan Pitt in 2008. After one short crabbing trip on a sunny August day in Boundary Bay with Captain Stan Bianchi aboard the infamous Kathy "B", Robyn and David decided to buy a piece of land to build their dream retirement home. Their second-row lot in Boundary Ridge offered endless views and sunsets and with no "time-to-build" restriction, it was the perfect way to plan for the future. The Emmersons became part of the Semiahmoo family in September of 2009. As building costs escalated, Robyn and David opted to buy an existing home just down the street from their lot in Boundary Ridge. That purchase was made in 2013 and the renovations began. After countless summers of great views and good friends, they finally decided to build their dream home. David loves a good project—



Robyn & David Emmerson (Courtesy Photo). Photo of Ron & Sharon Lighterink not available.

wife Robyn not so much. They sold the Belted Kingfisher Road property in 2023 and purchased their third Semiahmoo property—a home on Osprey Road in St. Andrews Green in 2024. After a complete remodel the Emmersons are now ready for Summer of 2025 to be their best one yet. The best thing for the Emmersons about Semiahmoo, besides our beautifully cool PNW summers, are the friendships that they have cultivated over the years — and that includes their friendship with their builder Tim Creelman.

You might think this story unique...but for many people, the journey is the same. Ron and Sharon Lighterink first came to Semiahmoo in 2001 when some friends of theirs from Northern California told them about this amazing place they had visited. Although their friends never purchased or returned to Semiahmoo again, Ron and Sharon quickly visited and bought their lot on Canvasback within walking distance to the club and by June of 2002 they were in their new summer/part-time home. For almost 16 years they enjoyed the golf course, their friends, the beauty of the area and especially the small town living of life in Blaine. Ron and Sharon decided it might be best to downsize and they moved to Arizona full-time in 2018. In 2024, Ron and Sharon decided they had been gone long enough from this place they had loved for over 20 years. They bought a small Country Club Villa—again walking distance to the golf course—and remodeled it before they arrived for the summer of 2024. After a quick round of golf, it was as if they had never left!

Why do people call Semiahmoo home? The natural beauty of this amazing piece of ground combined with the lifetime friends you make over the years. The journey may be different for each of us but everyone is enjoying the ride.

Summer Fun: Into the Woods

Written by Elisa Claassen, SRA Staff

According to local historians, who have read diaries of pioneering families, Whatcom County was once covered by heavy forests which have been greatly reduced by harvesting for the logging industry as well as making way for homes and farms over the past 100-plus years. Those who seek time in the forests can do so and spend little money — unless the particular area requires paid parking permits. After planning numerous outings for in-town and out-of-town guests, I've highlighted a few of many wooded areas. None of these require permits. All can be accessed quite easily for short visits.

Access to forests without driving far



Whatcom Falls Park Bridge in the Fall. The public park is part of the Bellingham Parks system off of Lakeway Drive. (Elisa Claassen)

Stimpson Family Nature Reserve/Bellingham

The reserve contains 370 acres with a pond in the Lake Whatcom Watershed between the Geneva district of Bellingham, Lake Whatcom, and the Sudden Valley community. It is protected by the Whatcom Land Trust and the Bellingham Parks and Recreation Department. A small gravel parking lot is accessed off of Lake Louise Road but hikers must slow down and look for it. From the parking lot, a pit toilet is available in a nicely-maintained building and a trail map is easily visible. Please note this is not adapted for disabilities although much of the trail is fairly flat. Two options for walking are available: one is a loop trail with 300 feet of elevation gain through dense forest which also has



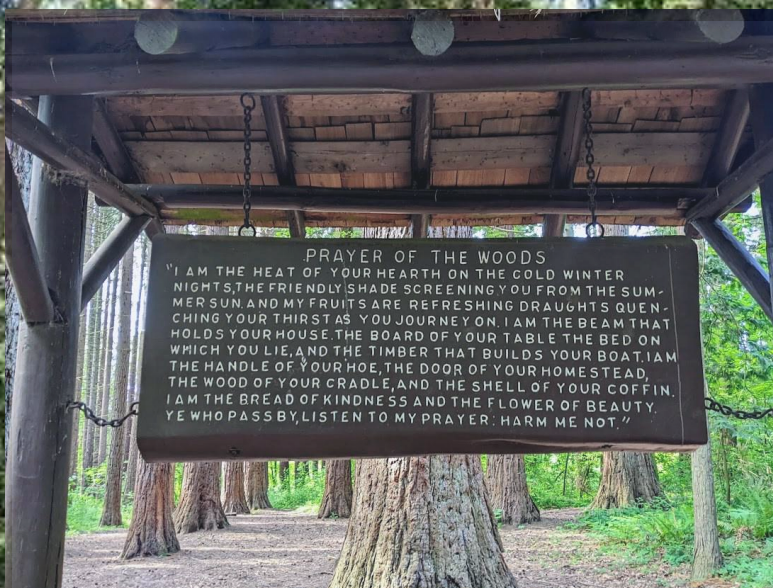
Stimpson Family Nature Reserve is located off of Lake Louise Road near Sudden Valley. (Elisa Claassen)

ferns and wetlands. While the lake is nearby, it is not visible. The reserve, versus a park per se, was acquired through several phases from the Trillium Corporation, Western Washington University and the Stimpson family. Managers request dogs not visit. Sudden Valley residents often access the trails from their homes. The woods have been kept as natural as possible and sometimes walkers need to duck under a fallen tree. For more information, see <https://www.whatcomcounty.us/3691/Stimpson-Family-Nature-Reserve> and <https://whatcomlandtrust.org/project/stimpson-nature-reserve/>.

Berthusen Park/Lynden

Berthusen Park is off of Berthusen Road minutes from the Guide Meridian. A white picket fence alerts drivers to turn in and follow the road past a home and red barn down and over a bridge over Bertrand Creek and into the forest area. There are numerous parking options. The City of Lynden Parks

Department has jurisdiction over this former farm homesteaded in 1883 by Hans Berthusen, per the city's website. The Berthusen's red barn and privy (outhouse) are listed on the Register of Historic Places and built from trees grown on the property. When the Berthusens died in 1943 and 1944 their entire 236 acres were given to the people of the city of Lynden. The site has picnic areas, group shelters, playgrounds, and old growth forest for hiking. Antique tractor displays are used by local groups for family-friendly farming promotional events as well as several other community clubs for model airplanes and shooting. Trail maps can be seen online at <https://www.lyndenwa.org/facilities/facility/details/>



Prayer of the Woods within Redwood Park in Surrey, B.C.
Online sources attribute it to Alberto de Veiga Simoes in 1914.
It was originally written in Portuguese. (Elisa Claassen)

the annual Tractor Pull. Other community clubs use the site for model airplanes and shooting. Trail maps can be seen online at <https://www.lyndenwa.org/facilities/facility/details/Berthusen-Park-4> or special signage has been installed to identify the trails by local Boy Scout troops. The main trails are Eagle and Owl.

Whatcom Falls /Bellingham

Sack dab in the middle of Bellingham, this 241-acre park is minutes from the freeway and the shopping areas of Lakeway Drive as well as from downtown Bellingham. This public park has areas easily accessed by all — and a few other areas requiring steady feet. Located along Silver Beach Road winding off of Lakeway Drive at a light, it is adjacent to the historic Bayview Cemetery (also operated by the City of Bellingham's Parks Department). A second entrance at 1401 Electric Avenue is located near a neighborhood shopping area, closer to a playground in a separate section.

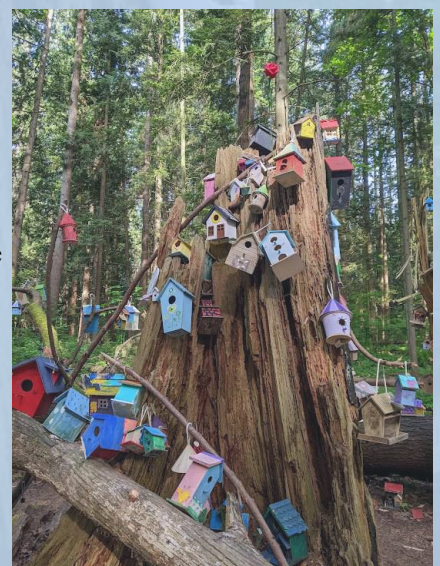
According to Wikipedia, the park has four sets of waterfalls. It also has a fishing pond for children, two tennis courts, athletic fields, picnic areas, and playgrounds, but the trail system is the focal point — and the primary breathtaking waterfall is seen from a historic stone Works Progress Administration (WPA) bridge, circa 1939-1940, that has been one of the most photographed sites in Bellingham. On June 10, 1999, the Olympic Pipeline ruptured in the park, leaking 237,000 gallons of gasoline into the creek which later ignited with the loss of forest sections and three young people. For more information about the park,, see the park website: <https://cob.org/services/recreation/parks-trails/parks-guide/whatcom-falls-park>.

Redwood Park/Surrey, B.C.

This park is rather hidden to many. The easiest route for American visitors is to cross the border at the Blaine truck crossing and proceed north along the highway and up the hill to a light at 104 Avenue by a fire station. Turn right (east), proceed several blocks and the park's entrance is well marked. For those interested in identifying the trees, newer labels have been safely attached to the sections of trees.

It's easy to drive by and not notice it since the entrance is off of a secondary road. Since so much TV filming is done immediately north of the border between White Rock and Chilliwack, this park has been the setting of scenes in several shows in recent years. It has a wheelchair-accessible playground, rustic picnic shelters from past generations, updated parking lots, and a hillside for playing or sledding. Deaf twins Peter and David Brown were gifted the then recently-logged property in 1893 by their father with the intent of the brothers becoming farmers. Instead, their farming efforts weren't as successful as their decision to obtain seeds of 33 trees from around the world including Redwoods. While they rebuilt a forest of trees from multiple countries, they chose to live in the middle in a treehouse. A replica of the tree house stands today in their memory. (They died in 1949 and 1958.) A hidden part of the park is not necessarily sanctioned by the parks department but has grown in popularity especially by children. The fairy forest contains possibly hundreds of small birdhouses colorfully decorated by children. It is located at 13450 -104 Avenue in Surrey.

For more information, see <https://www.surrey.ca/parks-recreation/parks/redwood-park>.



Fairy forest within Redwood Park in Surrey, B.C. Children bring in painted birdhouses with messages.
(Elisa Claassen)

UPCOMING EVENTS: BLAINE



Above: 2nd Saturday Art Walks continue. From 4 to 6:30 p.m. Start at the Blaine Art Gallery at 922 Peace Portal Drive, continue to Blind Bird Art Studio at 264 H Street, and stop in at Blaine businesses along the way that also feature art on their walls. Remember the dates of July 8 and August 12 and bring a friend.



To the top left: Kids' Splash Day on Friday, July 18 from 12 p.m. to 2 p.m. at Third and Martin streets in Blaine. It's a great way for the kids to cool down and beat the heat. The Blaine Public Works Department will shut down the street location with inflatable sprinklers, serve hot dogs, and snack, and Sugar Shack ice cream truck will be on site. Free.

To the right and to the bottom: Six exciting days — July 7-13— of rehearsals, combos, improv, composition, and other great classes for teens with an internationally recognized faculty culminating in a jazz concert featuring student big bands, combos and vocal groups PLUS multiple performances by visiting jazz artists. Sponsored by the Pacific Arts Association, an all volunteer organization, that produces annual series of concerts by professional artists throughout the year in Blaine at the Blaine School Performing Arts Center.



BLAINE HARBOR MUSIC FESTIVAL



Above: The Big Fourth of July celebration with a parade at Noon and fireworks at night. You can easily spend the day with the Farmers Market full of vendors, grab lunch, annual Friends of the Library book sale at the Blaine Library, and visit the free car show. Additional fireworks at Birch Bay along the water and also at Bellingham's waterfront. The Peoples Bank 4th of July Spectacular has partnered with the Bellingham Regional Chamber of Commerce and the Port of Bellingham for fireworks at 10:30 p.m. at Zuanich Park along with a beer garden, food trucks, free kids zone earlier in the day.

Right: Drayton Harbor Pirate Festival is August 2 at the Blaine Boating Center at 235 Marine Dr. in Blaine. It has family-oriented activities: 40-plus food and craft vendors, sea shanty performances, live music, scavenger hunts, pet contests, and more.



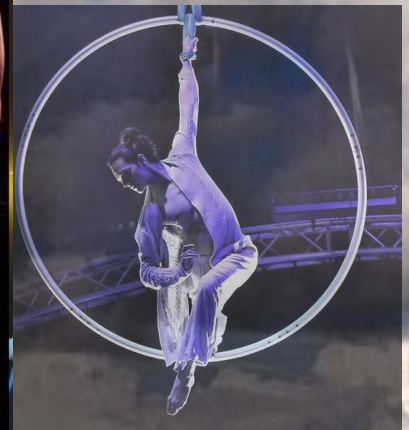
UPCOMING EVENTS: WHATCOM COUNTY

This is a sampling of Whatcom County activities.

Additional ones online at the visitor's center site <https://www.bellingham.org/events>.



To the left: Bellingham Festival of Music presents Artistic Director Marcelo Lehninger leading the Festival Orchestra in "London Calling" with Cellist Sterling Elliott. on July 5 at 7:30 p.m. at the WWU Performing Arts Center on campus. The festival is annually in July. More information at <https://bellinghamfestival.org/>



Above: Sunset Kayak Trips start in May and continue every week on Wednesday and Friday until September 12. Cost: \$99. Moondance Sea Kayak Adventures lead the sunset outings to view local harbor seals or otter families. All trips include guided instruction, tandem sea-worthy sea kayaks and all kayak gear. Good for beginners and experienced paddlers alike. Weight limit of 250 pounds per person. More information at 360-738-7664 or <https://www.moondancekayak.com/>

Check the Whatcom County Tourism site for additional kayaking and boating activities.

Above: Shoestring Circus starts on June 6 and occurs every week on Sunday, Thursday, Friday, and Saturday until June 22. Admission: \$16-\$48. It is located under the Big Top Tent on Granary Avenue near Bellingham's waterfront. Returning favorites and new characters through a set of "The Museum." Mischief. Surprise. Circus skills. Shows run approximately 90 minutes, with a 15-minute intermission. The tent will open 40 minutes prior to showtime. Tickets can be purchased online. More to see nearby in downtown Bellingham before you attend!

The circus tours between Washington cities Bellingham, Olympia, Orting, and Vancouver. For more information, see <https://>

Photos courtesy of their respective websites and companies.

UPCOMING EVENTS: SUMMER FUN

SUMMER PROGRAMS: Kids and Family



Bellingham Parks Department has programs to provide organized, safe, and positive experiences for youth and teens to allow them to explore their creative side, foster personal growth, develop an appreciation for the environment and discover their passions. All programs require pre-registration. Camps are arranged by age groups and have different topics each week, such as Fantastic Fantasy, The Need for Speed, Join the Circus, Ocean Mermaids, Superheroes, Survivor, Games Galore, and more. The costs varies between \$256 to \$335 a week.

Additionally, the department offers Skate Camp, Smart Trips Adventure Camps, activities for toddlers, Friday Youth Trips that are one-day outings and free Fun Fritdays on July 18, Aug. 8 and Aug. 22 from 11 a.m. to 2 p.m. at the Central Bellingham Library Lawn for all ages. For more information, see <https://cob.org/services/recreation/activities/youth-and-teen-programs>

Bellingham Training & Tennis Club— Eight-week Tennis Clinics for ages five and older.. Call 360-733-5050. Facility in Fairhaven.

Blaine-Birch Bay Park & Recreation District— Summer Day Camps– Starting June 23 through Aug. 14. Opportunities for children to enjoy outdoor activities, make new friends, and explore the beauty of Birch Bay State Park. Topics include geology, Greek mythology, astronomy, fun and fitness, wilderness safety, and a treasure hunt! Classes include Registration is online. https://blainewa.myrec.com/info/activities/program_details.aspx?ProgramID=29913

Wild Whatcom — Camps available for Grades 1-8 and also Preschool (ages 3-5). See <https://www.wildwhatcom.org/summer-camps>

This is a sampling of opportunities for children. Also check out music camps, theater, STEM, the YMCA, scouting programs, Jansen Art Center, and local churches.

SUMMER 2025 DAY CAMPS IN BIRCH BAY

JUNE 23 - AUGUST 14 AGES 5 - 12 YEARS

MON- THU 9 A.M. - 4 P.M. \$150/WEEK SCHOLARSHIPS AVAILABLE

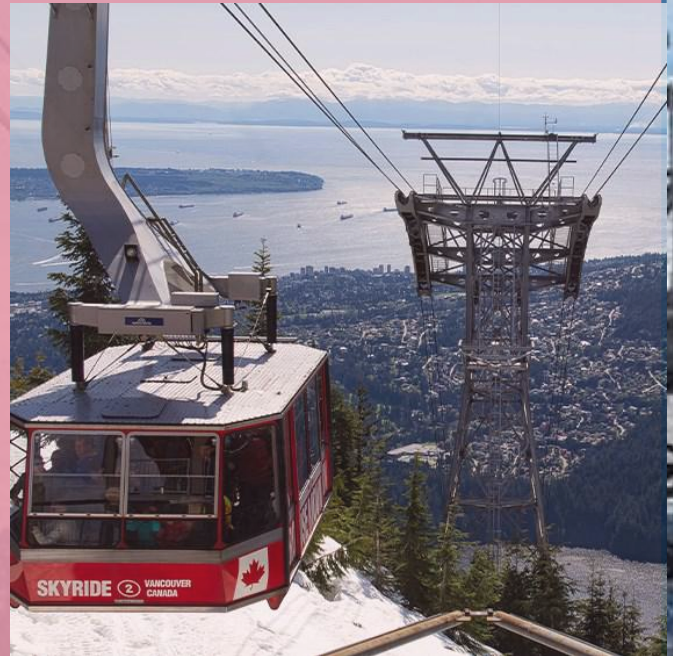
June 23 - 26 :	Rock Star Explorers
July 7 - 10 :	Myths and Legends
July 14 - 17 :	Cosmic Quest
July 21 - 24 :	EcoQuest Adventures
July 28 - 31 :	Fun and Fitness
August 4 - 7 :	Raiders of the Lost Artifact
August 11 - 14 :	Survivor

REGISTRATION NOW OPEN:
BBBPARKANDREC.ORG | QUESTIONS? CALL/TEXT 360-656-6416

SUMMER FUN: Focus on Travel & Views

Whatcom County-based Bellair Shuttle has lots of options for those wanting to watch baseball games in Seattle, explore plant nurseries, cheer on horse races, and cruise local waters. It also goes further afield — even out of the country to Portugal, Antarctica, and the Seine River in Germany. Trips tend to sell out, so call and schedule early and get on their list for first dibs. See website for more opportunities and details: <https://bellairtoursandadventures.com/>

Thursday, June 26—Grouse Mountain Lunch—\$219 per person (plus taxes). Take a tram ride to the top of Grouse Mountain, where you will have time to explore the beauty of the mountain and pristine views. After free time in the fresh air, enjoy a deluxe buffet lunch in the Observatory Room. The tour requires a valid passport, Enhanced Driver's License or Nexus card to the bus driver when boarding. The fee includes transportation in a motorcoach, tour host, round-trip ticket to Grouse Mountain, lunch, and snacks. Departure from Birch Bay Square at 8 a.m. Return to the square at 5 p.m.



Friday, July 4—Fourth of July Cruise on Bellingham Bay — \$199 per

person (plus taxes). Enjoy a delicious cracked crab and baked chicken dinner on board while cruising around Chuckanut and Bellingham bays. Then settle near Squalicum Harbor for Bellingham's big Fourth of July firework celebration. The bar is stocked with beverages from Northwest breweries and vineyards. Space is limited. Fee includes transportation on the bus, designated tour host, three-and-a-half hours of cruising, the dinner, and fireworks show. Depart Birch Bay Square at 6 p.m. and return at 12:45 a.m.

Monday, July 14 — Vancouver's Stanley Park — \$199 per person (plus taxes). The tour begins with a private 3-course gourmet lunch in the Tearoom at Stanley Park where you'll enjoy a West Coast-inspired menu set amongst the trees of the park with views of the ocean. An old-fashioned horse-drawn tram and meander in comfort through the natural beauty of the 1,000-acre park. Bring a camera. Contact Bellair for details and availability.



CRUISE



ART



SPORTS



FLY AWAY TRIP



SOLD OUT

Day Trip: Lummi Island

Elisa Claassen
SRA Staff Story and
Photos

LUMMI ISLAND – While most of the San Juan Islands require a plane ride or a planned lengthy ferry ride, Whatcom County's Lummi Island is only seven minutes or so via a small ferry from shore to island. Many county residents rarely go to the island and are missing out. When is the best time to go: During the artist studio open houses when more of the private areas of the island are open to visitors — and free.



Family outings not far away Only a seven-minute ferry ride

Getting to the Island

From Interstate 5, take the Slater Road exit #260 to the west, turn left after several miles at the Silver Reef Casino operated by the Lummi Island tribe, and follow Haxton Way through Lummi Island Reservation lands to the ferry (which is marked by small signs) at Gooseberry Point. The drive is around 25 minutes from Bellingham. Much of the drive is fairly wooded.

You may drive onto the ferry, bring or ride a bike, or walk on to the ferry, depending on your plans. If going to the studios, a car will be of help on the island.. If you are in good physical condition, by all means pack a bike. If you want to simply go to the island to eat, walk on and save on the cost of the car. Cars can be parked on the mainland side.

Occasionally, the ferry undergoes repairs and goes into scheduled dry dock outages. A list of fares is also available online and posted at the ferry dock. The charge for passengers/pedestrians is \$8 for one round trip. Children under 12 with a parent ride free. Children 12 to 18 are also free of fees. (Subject to change.) A more detailed chart gives fares for bicycles, motorcycles, vehicle and driver, and larger vehicles. A \$25 million grant was awarded by the Washington State Department of Transportation to replace the ferry with an electric-battery hybrid ferry and build related infrastructure. For the current situation of the Whatcom Chief ferry, operated by Whatcom County since 1962, see <https://www.whatcomcounty.us/382/Lummi-Island-Ferry>. The current ferry can carry up to 100 passengers and 16 standard-sized vehicles.

During holiday weekends, with potentially more traffic, the ferry operates more frequently than the published schedule displays. Get in line and patiently wait your turn and don't be squeamish when ferry staff indicate to park inches from other cars. Have your fare ready as the ride is short and staff will collect it on the way over.

What is on the island?

The island, originally called Skallaham by the Lummi Indians, was charted for the first time in 1792 by Spanish explorers who called it Isla de Pacheco. Records, noted on Lummi-island.com, mention the island also being called McLaughlin's Island or a time before it became Lummi Island in 1853 by the U.S. Geodetic Survey. The first permanent settler was Captain Christian Tuttle who came by canoe in 1871. A road in the middle of the island bears the family name and many tombstones also have that name in the island's small cemetery in the middle of the island.



For those traveling to the island today, it is rural with no shopping malls, movie theaters, or larger employers. The population of 905 in a 2019 count lives on the north end. The southern half of the island has a mountain and a former rock quarry. It does have a small school for elementary grades, a corner grocery store, a branch of the Whatcom County Library System, a post office, small eatery, and beach access. A few trails can also be accessed to the public who know where to look.

The Lummi Island Heritage Trust has purchased a 120-acre parcel on Lummi Mountain near the Aiston Preserve and creates an increased focus on protecting the wooded areas of the island's southern mountainous region. A new trail is explained at liht.org. On one attempt to climb the main trail at the Otto Preserve's Baker Preserve, it was a bit steeper than anticipated. As the island's website explains: "This is a vigorous hike up a steep, winding trail. The hike is 1.64 miles with a 1,060 foot elevation gain to an overlook with magnificent views of Rosario Strait and the San Juan Islands." The small parking lot can be missed so drive slowly. It has a small parking lot on Seacrest Road (which require looking at a map) . No dogs are allowed at this preserve.

On the north end of the island, The Curry Preserve has easier trails through fields and forest. The group's maintaining these areas request visitors come by daylight hours, stay on the trails, not litter, and only have dogs on leash. The access point is at 3560 Sunrise Road.

Note: Some of the roadway around the island's western edge are quite close to the water with barriers nearby so drive cautiously and watch for locals who are walking and biking – or pulling their boats in from fishing.

For decades, the island's artists have opened up their studio spaces to the public to visit and hopefully purchase some art in the process. The events are usually timed along with Memorial Day weekend, Labor Day weekend with another weekend or two thrown into the mixture. A downloadable flyer showing the participants is on the group's website (<http://www.lummi-island.com/artists-studio-tour>) and paper copies of the maps are available at the community store

near the door. Artists usually have paintings, notecards, jewelry, photography, sculpture, glass items, or any number of other things. While some of the artists may sell their works locally, some actually focus on national marketplaces or museums.



SUMMER FUN:

Whatcom by Air

Scheduled flights and charters are options

By Elisa Claassen
SRA Staff—Story and Photos

BELLINGHAM — I stopped by the San Juan Airlines office, at 4167 Mitchell Way with easy-to-see signage, on a Saturday afternoon with the intention of speaking to the Operations Manager Tammy Wilcox, who had just returned from traveling herself. Wilcox, who has worked for several airlines, said she also loves traveling herself and suggested to me the opportunity to jump into the plane heading out to pick up a passenger from Friday Harbor on San Juan Island. In contrast to taking the ferry boats from the busy terminal in Anacortes — which is around an hour drive from Bellingham and then riding the ferries for another hour to the quaint day trip destination — I climbed in, put on my seatbelt, and was fascinated flying above the many San Juan Islands. Since my maternal grandparents had a cottage on the shores of Orcas Island when I was growing up, I looked down and saw it as well as homes perched atop hillsides, a better visual representation of the height of the mountains on some of the islands, roadways, boats and even ferries. I looked for whales but couldn't see them or recognize them on this flight.

The pilots went through a brief safety lecture, smiled, and within minutes we taxied onto the main runway and were airborne a short time later. The flight was quite smooth, the views were amazing, and we got to our destination within about 20 minutes. (Going to Orcas Island is literally only 13 minutes of flight for those looking at another short option.) Our passenger was ready within minutes and I was able to chat with him briefly over the noise of the plane. I told him of my project. He lives in California and has a vacation condo in the islands which he visits regularly, taking advantage of flights from Oakland to Bellingham and then walking across the tarmac to San Juan Airlines to get to his destination in the quickest way possible.

Once we returned I talked more with Wilcox and asked why she enjoys her job. “My favorite parts of my job are helping passengers plan and execute their travel plans. I personally love to travel and enjoy helping others do the same. The other thing I enjoy is being part of a small business and having a hand in the growth of the company.” Wilcox said the company was purchased several years ago by an owner in Friday Harbor.

What makes this small regional airline special? One visitor to the office was a former pilot of theirs who now flies a small private corporate jet service. The flight experience is great for the pilots who have the opportunity to land in very different small landing strips. In fact, for customers, booking a flight may involve going on a regularly scheduled flight or creating your own destination. Wilcox said they have regular customers being flown into the islands or in and out of Point Roberts for work projects when time is money and they need to get there quickly. She also said that some people have difficulty with crossing two international borders by land into or out of Port Roberts and the flight approach is a good solution — especially if they don't have a Nexus or a Passport. As summer approaches more tourists jump aboard their three- or five-passenger Cessna planes



excursions to fishing, beaches, hiking. Just because it isn't on the schedule doesn't mean it isn't possible. Wilcox said to ask them and if their destination has a place to land, then they will price it out, and see if it can be accommodated including for groups of three or five.

One place they could land was at a horse camp for a local teen who wanted to attend, Wilcox said. The ranch had either a driveway or a grass strip. San Juan suggests flights to Campbell River on Vancouver Island for fishing, eastern Washington for wine tasting. International flights to Bellingham include Boundary Bay, Victoria, Vancouver International Airport, Nanaimo, Tofino; they also fly to Boeing Field in Seattle. Scenic flight tours can be designed and recently San Juan took passengers over the Skagit Valley tulip fields; another option is to fly over the San Juan Islands in a one-hour flight.

Within Whatcom County San Juan offers a regular schedule with daily flights to Orcas Island, Friday Harbor and Roche Harbor on San Juan Island, Lopez Island and Blakely Island. Since Lynden does have a runway, they have landed there also. The flights currently vary between \$95 and \$114 one-way. (Subject to change.) The cost for Point Roberts' flights are \$148 each way. (Passengers can also choose to return via the San Juan ferry system for free since fares are taken going west bound only.) Simply arrive 15 minutes before your flight. Let their staff know if you need to be somewhere at a specific time or have a critical appointment to maintain. Requests can be made online and 95% of requests can be confirmed from these online submissions.

For those with questions about the airline, e-mail info@sanjuanairlines.com or call -1-800-874-4434 between 7 a.m. and 5 p.m. daily. The website contains information about flying with Visual Flight Rules (VFR) in rugged terrain. For those wishing to fly with San Juan to San Juan Island and explore, the airline does cross promotions with Suzy's Mopeds and San Juan Safaris.

Several San Juan Islands at a Glance (There are plenty more!)

Lopez Island - Considered the "Friendly Isle," Lopez is 15 miles long with 63 miles of shoreline and 2,500 permanent residents. The Visitor Center says sheep and llamas as well as wine grapes and orchards are here for bicycle riders to peddle by. Several sites of interest include the Lopez Ferry Terminal, Odlin Park, Lopez Village, Lopez Island Historical Society and Museum, and Shark Reef.



Orcas Island - Many are most familiar with Orcas through Hallmark Channel and other movies or may have had family living there at one time. Moran State Park has 5,252 acres to drive or hike through topped by Mount Constitution and a lookout tower. Small communities and towns dot the landscape – Olga, Doe Bay, Deer Harbor, West Sound, and Eastsound. Historic Rosario Resort was once home to a wealthy shipbuilder and has a restaurant, spa, marina, museum, and accommodations. Eastsound has shopping, dining options, and a farmers market.



Firewise Info

HOME IGNITION ZONE CHECKLIST

Immediate Zone (Home and 0-5ft)

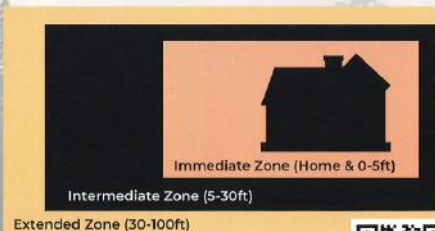
- ☐ Clean roof & gutters of debris
- ☐ Install 1/8 inch metal mesh screening on vents
- ☐ Maintain 8 inches of clearance between the siding & ground
- ☐ Remove flammable material from the first five feet
- ☐ Clean debris off decks or porches & remove flammable items stored underneath

Intermediate Zone (5-30ft)

- ☐ Create fuel breaks
- ☐ Remove ladder fuels
- ☐ Keep lawns & native grasses mowed to 4 inches

Extended Zone (30-100ft)

- ☐ Dispose of heavy accumulation of ground litter & debris
- ☐ Remove dead vegetation
- ☐ Remove slash piles
- ☐ Store firewood at least 30 ft away from the home



WWW.WHATCOMCD.ORG/WILDFIRE



For those who missed the Town Hall, about wildfire safety, it is available on YouTube. Residents can contact Robert Walters to ask questions.

Whatcom
CONSERVATION DISTRICT

ROBERT WALTERS
Wildfire Resilience Specialist

6975 Hannegan Road
Lynden, WA 98264
www.whatcomcd.org

(360) 526-2361 ext. 106
rwalters@whatcomcd.org



Local sunset photo taken over the golf course by Darce Woods

WE LOVE OUR PETS

Please remember to leash pets at all times per the City of Blaine law and SRA CC&Rs.

Please carry waste bags and pick up after your pet.

At the Semiahmoo BeachWhat a wonderful world...

Photos by Elisa Claassens, Staff

