



# FAIR Newsletter

26-June 2026



إعادة  
Saudi Re





# CHARTING THE COURSE FORWARD WITH RESILIENCE AND AMBITION

With two A level ratings, reflecting the financial and competitive strength, Saudi Re continues to chart the course forward with steady strides toward new dawns.

[www.Saudi-re.com](http://www.Saudi-re.com)

Saudi Reinsurance Company  
Regulated by Insurance Authority

إعادة  
Saudi Re



## Global

### Shedding light on uninsured loss: **Moody's**

The protection gap — the difference between total economic losses and the share that insurance actually covers — is a widening, systemic risk.

[Read more](#)

## Global

### Mapping organisational exposure to geopolitical risk: **Lockton**

Geopolitical risk is no longer defined by isolated events but exerts a persistent influence on how organisations operate. It increasingly shapes decisions on where to invest, how supply chains are configured, and how workforces are deployed.

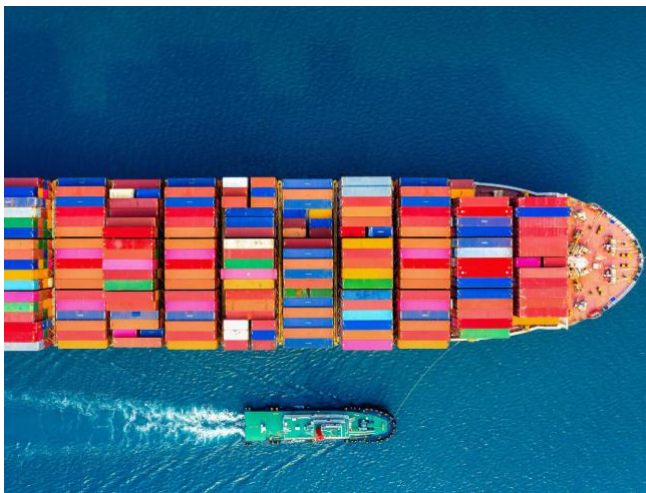
[Read more](#)



## Global Safety and Shipping Review 2026: Allianz

Shipping industry is transitioning toward a new equilibrium defined by higher volatility and uncertainty, which will necessitate a greater strategic emphasis on resilience over pure cost efficiency.

[Read more](#)



## Global Lloyd's List: Piracy & Security

Stay informed with the latest news, analysis and market insight on the piracy and security threats impacting the shipping industry.

[Read more](#)



## Global Lloyd's unveils US\$400mn marine war risk consortium for Hor- muz ships

Global insurer Chubb will act as lead underwriter and work alongside participating Lloyd's syndicates and specialist market partners.

[Read more](#)

## Global What Does Iran Collect When the Fee Is Zero?: House of Saud

The insurance architecture is the permanent structure; the fee is the variable that Iran can adjust at will once the waiver expires.

[Read more](#)

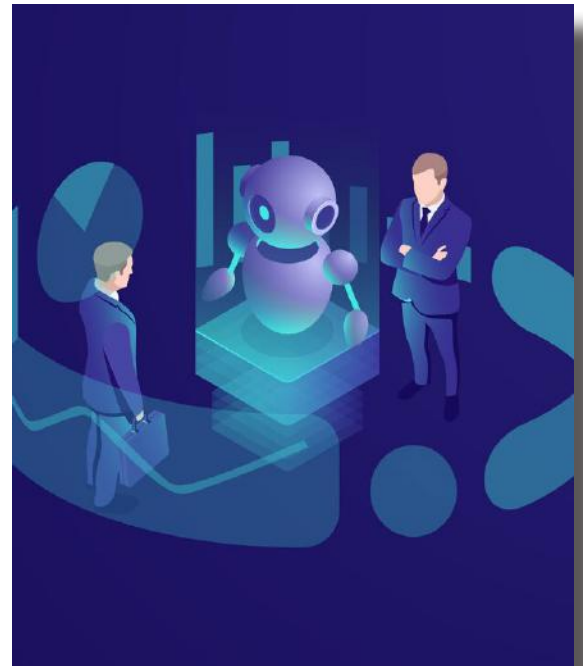


## Global

### Inside the AI modeling race reshaping catastrophe risk

The actuarial methodology powering insurance risk models is advancing faster than most carriers realize. Here is what is changing.

[Read more](#)



## Global

### Which AI is right for your insurance brokerage? A practical guide to the models that matter in 2026

For insurance brokers handling sensitive client data, the wrong choice isn't just inefficient. It could be a compliance problem.

[Read more](#)



## Algeria

The new agricultural risk insurance mechanism will initially cover cereal farming

CNMA has developed a new insurance scheme for agricultural activity, dedicated to covering major risks related to climate change, mainly drought.

[Read more](#)

## Hong Kong

Hong Kong insurers shrug off crackdown fears: CGS International

Hong Kong insurance companies are expected to maintain solid growth despite recent investor fears over tighter cross-border financial regulations, which analysts at CGS International call overdone.

[Read more](#)



## India

### 630 GB stolen

The compromised data includes over 200,000 corporate and client files including highly confidential engineering specifications, quality standards, and proprietary schematics belonging to TEPL's primary global original equipment manufacturers (OEMs), specifically Apple Inc. and Tesla Inc.

[Read more](#)



## India

### BMS opens Mumbai capability centre

The company said this is part of their strategy to build data, analytics and artificial intelligence (AI) capability at scale.

[Read more](#)



## Japan

### Best's Market Segment Report: AM Best Maintains Stable Outlook on Japan's Non-Life Insurance Segment

The sustained depreciation of the Japanese Yen has cut both ways for the non-life market, generating translation gains on overseas earnings while simultaneously driving up claims costs in the voluntary and fire lines.

[Read more](#)

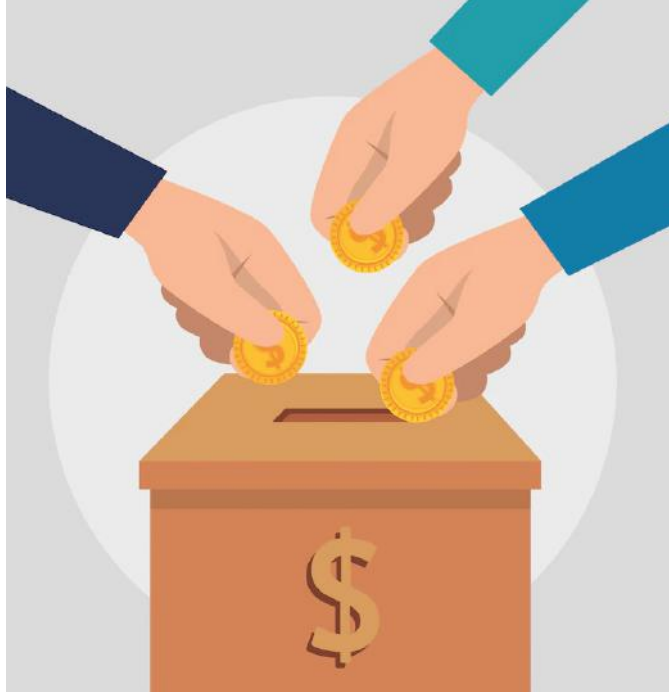
## Japan

### Japanese insurers sold domestic superlong bonds as yields soared

Local insurers sold a net ¥201.2 billion (\$1.25 billion) of Japanese sovereign debt due in more than 10 years, according to the latest Japan Securities Dealers Association data.

[Read more](#)





## Kenya

### PCF disburses Sh390.8mn in insurance claims

The Policyholders Compensation Fund (PCF) has paid out Sh390.8 million to policyholders and claimants affected by the collapse of insurance companies.

[Read more](#)

## Kenya

### Equity Group to Venture into Insurance Business in the DRC

Equity Group plans to spend some US\$ 12Million to roll out a life insurance business in the DRC and another US\$ 13.37 Million to set up a General Insurance Business Unit.

[Read more](#)



## KSA

### Al Rajhi Takaful doubles its share capital

Al Rajhi Takaful's shareholders approved a 100% increase in the company's share capital, raising it from 1 billion SAR (262.4 million USD) to 2 billion SAR (524.8 million USD).

[Read more](#)

تكاful الراجحي  
Al Rajhi Takaful



## Morocco

### AtlantaSanad adds new ISO quality stamp as it rolls out more digital services

AtlantaSanad Assurance has received new ISO 9001:2015 quality certifications for its health and automobile insurance businesses as the company continues to invest in customer service and digital tools.

[Read more](#)



## Pakistan

### ADB Approves \$700 Million Loan to Transform Pakistan's Insurance Sector

This program supports the transformation of Pakistan's insurance sector from a legacy, rules-based framework to a modern, risk-based, and market-oriented system.

[Read more](#)

## Qatar

### QGIRCO named 'Most Innovative Motor Insurance Company in Qatar 2026'

The award honours QGIRCO's continued investment in digital transformation, making online motor insurance one of the fastest and most affordable options in the Qatari market.

[Read more](#)



**QATAR GENERAL**

INSURANCE & REINSURANCE CO. S.A.Q

---

## South Africa

### Floods in South Africa: May 2026: JBA

The floods highlight the growing financial and humanitarian impacts of severe flooding across the region, particularly in areas of low insurance penetration and high property and infrastructure exposure and vulnerability.

[Read more](#)



## South Korea

### 50 More Home-Based Medical Care Centers Selected to Strengthen Medical and Care Ser- vices

The Ministry of Health and Welfare has newly designated 50 medical centers for home-based medical care for long-term care insurance beneficiaries through an open call for the Pilot Project for Long-Term Care Home-based Medical Care Centers.

[Read more](#)



## Turkiye

### HDI Sigorta Agrees to Transfer HDI Katılım Sigorta to Aydın Group

The move reflects HDI Sigorta's intention to sharpen its focus on core strategic priorities while enabling the subsidiary to continue its journey under a new ownership structure.

[Read more](#)

## UAE

### Manulife Launches Takaful Wealth Protection and Legacy Solution

In response to the increasingly sophisticated needs of affluent families and business owners across the Middle East, North Africa, and South Asia region.

[Read more](#)



## UAE

### Middle East tensions could slow listed UAE insurers' revenue growth to 10%

UAE insurance market will maintain robust underwriting results throughout 2026. Rate increases following floods in early 2024, combined with a low level of claims in most of 2025 and into 2026, have supported underwriting profits.

[Read more](#)



## Uganda

### Insurance Industry Leaders Spotlight Opportunities in 2026/27 Budget

Emerging investments in oil and gas, infrastructure, healthcare, education and technology offer significant growth potential for insurers.

[Read more](#)



## Algeria

### Compagnie Centrale de Réassurance: 2025 results

Compagnie Centrale de Réassurance (CCR) reported turnover of 53.028 billion DZD (406.8 million USD) for the fiscal year 2025, representing a 6% increase year-over-year.

[Read more](#)



## Egypt

### Regulator issues reinsurance requirements for insurers

Under the new requirements, an insurer must prepare a reinsurance policy that explains the reasons for resorting to reinsurance as a risk transfer tool and the economic feasibility of the company taking up reinsurance.

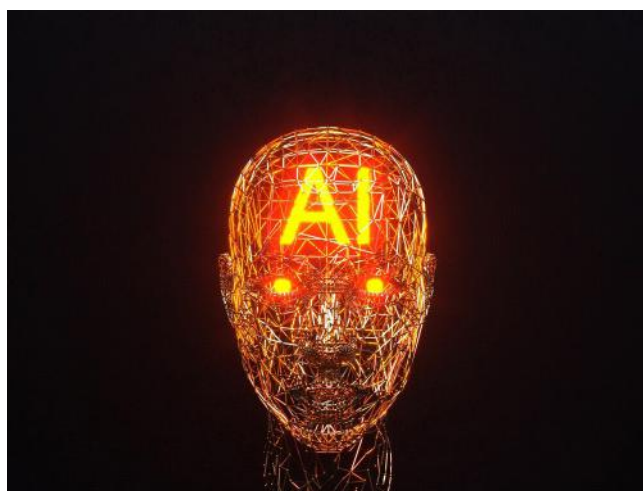
[Read more](#)

## India

### IRDAI forms working group on AI

The seven-member working group, will study AI's impact, including potential challenges and risks, and assess implications for insurers, policyholders and the insurance ecosystem.

[Read more](#)





## Nigeria

### 'Insurance Industry Entering Into Transformative Era With Demand for Higher Governance Standards'

This legislation presents us with a unique opportunity to rebuild trust, strengthen resilience, and reposition insurance as a vital engine of economic stability.

[Read more](#)

## Philippines

### IC Directs Regulated Entities to Facilitate Claims Processing in Earthquake-hit Localities

Expedite the processing, approval, and payment of claims for damage attributable to said disasters, including relaxation of company procedures and documentary requirements.

[Read more](#)



---

## South Korea

### FSC Introduces Updates to AI Guidelines in Financial Sector

At current stage, AI should be used as a means of assistance, which requires human supervision, and the ultimate responsibility for decision-making lies with the AI supervisor.

[Read more](#)



## South Korea

### FSS orders insurers to notify consumers of claim standard changes in Korea

Many consumers received hospital treatment trusting existing claim payment practices, only to learn after their claims were denied that the insurer had changed its review standards.

[Read more](#)



## Al-Ahleia Insurance Company

Al-Ahleia Insurance Company S.A.K.P. Outlook Revised To Positive On Continued Profitable Growth; 'A-' Ratings Affirmed: S&P

Al-Ahleia Insurance Co. has maintained its strong underwriting performance and prudent investment profile, and significantly strengthened its business model over the past few years.

[Read more](#)

## Kuwait Reinsurance Co. K.S.C.

Kuwait Reinsurance Co. K.S.C. Outlook Revised To Positive On Continued Profitable Growth; 'A-', 'gcAAA' Ratings Affirmed: S&P

Kuwait Reinsurance Co. has managed to combine strong growth and sound underwriting over the last few years, leading to a net income that grew 2.4x in 2022-2025 and growing capital buffers.

[Read more](#)



## **Al Buhaira National Insurance Co.**

UAE-Based Al Buhaira National Insurance Co. PSC  
'B-' Rating Affirmed; Outlook Remains Stable: S&P

The stable outlook reflects our expectation that ABNIC will maintain its improved operating performance and capital adequacy at current levels.

[Read more](#)

## **Euro Arab Insurance Group**

Jordan-Based Euro Arab Insurance Group 'BB-' Rating Affirmed; Outlook Stable: S&P

The stable outlook reflects our expectation that the company will, over the next 12 months, continue to grow its business profitably while strengthening its capital adequacy to our 99.99% benchmark.

[Read more](#)



## Kuwait Islamic Takaful Insurance

### AM Best Assigns Credit Ratings to Kuwait Islamic Takaful Insurance Company K.S.C. (closed)

AM Best has assigned a Financial Strength Rating of A- (Excellent) and a Long-Term Issuer Credit Rating of “a-” (Excellent) to Kuwait Islamic Takaful Insurance Company K.S.C. (closed) (KIC Takaful) (Kuwait). The outlook assigned to these Credit Ratings (ratings) is stable.

[Read more](#)

## MAPFRE Sigorta

### Fitch Affirms MAPFRE Sigorta’s IFS Rating at ‘AA+(-tur)’; Outlook Stable

The affirmation reflects MAPFRE Sigorta’s importance to its parent, MAPFRE, S.A. (Issuer Default Rating: A/Stable), and its strengthened capitalisation and resilient financial performance.

[Read more](#)



## Neova Sigorta

### Fitch Upgrades Neova Sigorta's National IFS Rating to 'AA-(tur)'; Outlook Stable

The upgrade reflects improvements to Neova Sigorta's business risk profile, supported by active reduction of the motor third party liability (MTPL) business and the growth in other non-motor lines.

[Read more](#)

## Zhonglu Insurance

### Fitch Affirms Zhonglu Insurance's IFS at 'BBB'; Outlook Stable

The rating affirmation reflects the insurer's 'Moderate' company profile and improved earnings, partly offset by a narrower risk-based capital buffer due to continued rapid business growth.

[Read more](#)



## SanlamAllianz

### Names new CEO

Hennie Nel has been appointed Chief Executive Officer (CEO) of SanlamAllianz.

[Read more](#)



# إعادة Saudi Re



## قطر

### قطاع التأمين.. نمو مستدام مدفوع بقوة الاقتصاد والتحول الرقمي

تشير البيانات إلى أن التأمين التقليدي يستحوذ على نحو 93% من إيرادات السوق، مقابل 7% للتأمين التكافلي، ما يعكس استمرار هيمنة التأمينات العامة مع نمو تدريجي لقطاع التكافل.

للمزيد

## قطر

### الشركة القطرية العامة للتأمين واعادة التأمين (QGIRCO) تحصد جائزة "شركة تأمين السيارات الأكثر ابتكاراً في قطر 2026"

نجحت القطرية العامة في إعادة ابتكار تجربة تأمين السيارات عبر إطلاق منصة رقمية بالكامل تتيح للعملاء الحصول على أسعار التغطية وإصدار الوثائق في غضون دقائق.

للمزيد



**QATAR GENERAL**

INSURANCE & REINSURANCE CO. S.A.Q



## الخليج العربي

تراجع تكاليف تأمين الشحن  
البحري لمرور السفن عبر مضيق  
هرمز بأكثر من 50%

أقساط تأمين الشحن البحري انخفضت من نحو  
5% من قيمة السفينة إلى قرابة 2% بعد احتساب  
الخصومات ما وفر مئات الآلاف من الدولارات لكل  
رحلة، فيما كانت بعض ناقلات النفط العملاقة تتحمل  
تكاليف تأمين بملايين الدولارات أسبوعياً خلال ذروة  
التوتر.

للمزيد

## الجزائر

ضوابط تدقيق جديدة للبنوك  
وشركات التأمين ومؤسسات البورصة

تعتمد المدونة الإطار المفاهيمي المعتمد دولياً، والقائم  
على ثلاث مراحل تتمثل في تحديد التهديدات، وتقييمها،  
ثم اتخاذ التدابير المناسبة لمعالجتها، مع إلزام محافظ  
الحسابات بتوثيق جميع هذه الإجراءات في ملف المهمة.

للمزيد

