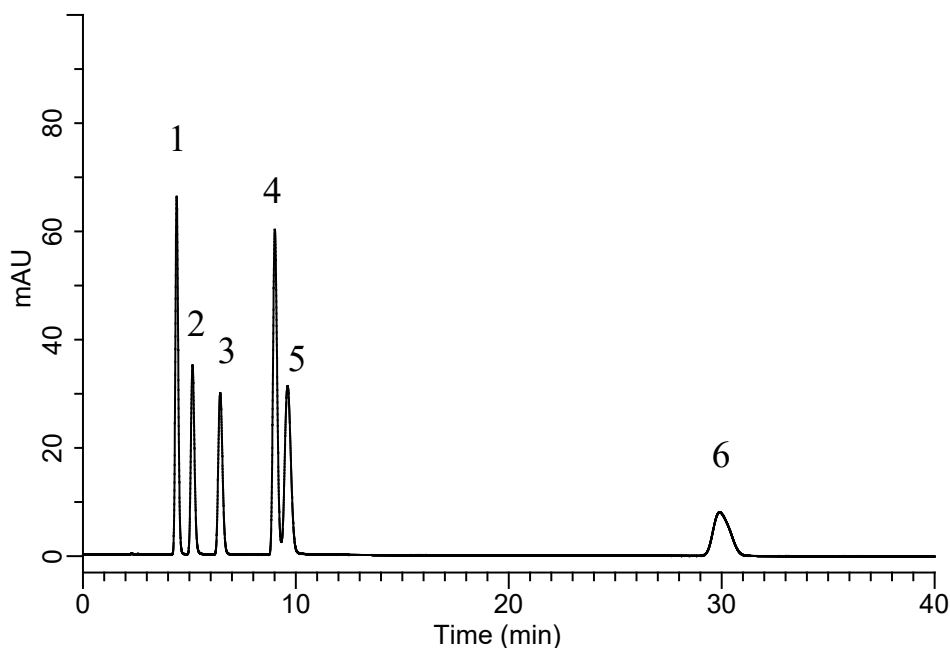


# InertSearch for LC

Inertsil Applications

## Analysis of ATP related compounds

Data No. LB712-0696



### Conditions

**System** : Chromaster HPLC system  
**Column** : InertSustain C30  
(5  $\mu$  m, 250 x 4.6 mm I.D.)  
**Column Cat. No.** : 5020-17145  
**Eluent** : 20 mM  $K_2HPO_4$  in  $H_2O$  (pH7.0,  $H_3PO_4$ )  
**Flow Rate** : 1.5 mL/min  
**Col. Temp.** : 40  $^{\circ}C$   
**Detection** : UV 260 nm  
**Injection Vol.** : 10  $\mu$  L  
**Sample** : Standard

### Analyte:

1. 5'-IMP	100 mg/L
2. 5'-AMP	100 mg/L
3. 5'-ADP	100 mg/L
4. Hypoxanthine	100 mg/L
5. 5'-ATP	100 mg/L
6. Inosine	100 mg/L