

# Good Buys

CAMPAIGNS 9-10 '25

Last  
Chance  
SALE

Fashion and jewelry picks  
at can't-be-beat prices.

WHILE SUPPLIES LAST. NO RETURNS. ALL SALES FINAL.



#### ❖ Sheer Back Dress

Black V-neck dress with sheer long sleeves and back. Back slit with double-button closure at neck and zipper closure at bottom of slit. Body: polyester/spandex. Trim and lining: 100% polyester. Center back length: 36½" on M; 38" on 1X. Machine wash, line dry. Imported.

S(4-6) **495-034**      XL(16) **495-159**  
 M(8-10) **495-049**      1X(18W-20W) **495-182**  
 L(12-14) **495-053**      2X(22W-24W) **495-201**  
 reg. \$49.99      3X(26W-28W) **495-220**  
**\$24.99**



#### ❖ Lace-Front Blouse

Red high-neck blouse with lace appliqué and long balloon-style sleeves. Double-button closure on back neck. Viscose/spandex. Center back length: 26½" on M and 1X. Machine wash, dry flat. Imported.

XL(16) **495-766**      2X(22W-24W) **594-438**  
 1X(18W-20W) **593-580**      3X(26W-28W) **594-806**  
 reg. \$53.99  
**\$25.99**



2-piece set

#### ❖ Wide Ribbed 2-Piece Set

Grey wide-ribbed, lounge set. Top with V-neck, button-front placket and long sleeves. Bottoms with elastic waistband and side seam pockets. Polyester/rayon/spandex. Center back length: 20" on M; 22" on 1X. Inseam: 27½" on all sizes. Machine wash, line dry. Imported.

S(4-6) **508-753**  
 M(8-10) **508-940**  
 L(12-14) **509-032**  
 XL(16) **509-161**  
 1X(18W-20W) **509-339**  
 2X(22W-24W) **509-396**  
 3X(26W-28W) **509-468**  
 reg. \$49.99

**\$24.99 the set**



#### ❖ Rib Knit Tank Dress and Cardigan

Plum tank dress with open-front cardigan. Polyester/spandex. Center back length for cardigan: 36" on M; 37" on 1X. Center back length for dress: 35" on M; 36" on 1X. Machine wash and dry. Imported.

S(4-6) **784-179**      1X(18W-20W) **784-331**  
 M(8-10) **784-198**      2X(22W-24W) **784-350**  
 L(12-14) **784-236**      3X(26W-28W) **784-365**  
 XL(16) **784-308**  
 reg. \$49.99

**\$23.99**

# SAVE UP TO 50%

pages 2-3



## ❖ Sheer Holiday Dress

Sapphire-blue knit dress with full-length navy, blue and silver metallic sheer overlay. Body: polyester/metallic. Lining: 100% polyester. Center back length: 36" on M and 1X. Machine wash, line dry. Imported.

M(8-10) **138-810** 1X(18W-20W) **138-949**

L(12-14) **138-881** 2X(22W-24W) **139-490**

XL(16) **138-934** 3X(26W-28W) **139-649**

reg. \$49.99

**\$22.99**



## ❖ Tie-Back Glitter Top

Blue/green metallic tunic-style top with scoop back with tie detail. Body: cotton/polyester/metallic fiber. Trim: viscose/polyester/spandex. Center back length: 31" on M; 33" on 1X. Machine wash and dry. Imported.

S(4-6) **495-785**

XL(16) **495-838**

M(8-10) **495-819**

1X(18W-20W) **495-842**

L(12-14) **495-823**

2X(22W-24W) **495-857**

reg. \$42.99

3X(26W-28W) **495-861**

**\$20.99**



## ❖ Lace Pant

Black pull-on lace pant with lining, side seam pockets and flat-front waist with elastic back. 100% polyester. Inseam for lining: 23" on all sizes. Inseam for outer lace layer: 28½" on all sizes. Machine wash and dry. Imported.

S(4-6) **752-318** 1X(18W-20W) **752-705**

M(8-10) **752-341** 2X(22W-24W) **753-080**

L(12-14) **752-629** 3X(26W-28W) **753-094**

XL(16) **752-633**

reg. \$49.99

**\$25.99**



## ❖ Satin Button Front Dress

Deep teal dress with collar, button front, long sleeves with button cuff and self-tie sash at waist. 100% polyester. Center back length: 38" on M; 39" on 1X. Machine wash, line dry (remove sash before washing). Imported.

M(8-10) **434-383**

1X(18W-20W) **434-474**

L(12-14) **434-402**

2X(22W-24W) **434-489**

XL(16) **434-417**

3X(26W-28W) **434-493**

reg. \$49.99

**\$25.99**

# SAVE UP TO 45%

pages 4-5



## ❖ Printed Extended Sleeve Top

Multi-stripe top with round neckline and extended shoulder-meets-cap-sleeve design. Rayon/spandex. Center back length: 21" on M; 23" on 1X. Machine wash, dry flat. Imported.

reg. \$24.99

**\$12.99 each**

Blue Stripe

M(8-10) **599-630**

L(12-14) **599-994**

XL(16) **600-033**

1X(18W-20W) **600-181**

2X(22W-24W) **600-220**

Rose Stripe

M(8-10) **598-759**

L(12-14) **599-296**

XL(16) **599-349**

1X(18W-20W) **599-353**

2X(22W-24W) **599-368**

4-PACK



## ❖ 4-Pack of Tees

Includes dusty green, blush, black-and-white print and light purple crew-neck tees with short sleeves. Cotton/polyester. Center back length: 25" on M; 27" on 1X. Machine wash and dry. Imported.

M(8-10) **760-365**

1X(18W-20W) **760-418**

L(12-14) **760-370**

2X(22W-24W) **760-590**

XL(16) **760-384**

3X(26W-28W) **760-604**

reg. \$49.99

**\$23.99 the pack**



## ❖ Button-Down Tunic

Blue stripe collared shirt with button-front placket, long sleeves with cuff and fabric self-tie belt at waist. 100% polyester. Center back length: 36" on M; 37" on 1X. Machine wash and dry. Imported.

M(8-10) **668-569**

1X(18W-20W) **669-106**

L(12-14) **668-679**

2X(22W-24W) **669-269**

XL(16) **669-068**

3X(26W-28W) **669-326**

reg. \$46.99

**\$23.99**



## ❖ Long-Sleeve Grommet Dress

Black long-sleeve dress with an open neck, grommet and lacing detail at shoulder and self-tie fabric belt at waist. Polyester/spandex. Center back length: 36" on M; 37" on 1X. Machine wash, line dry (remove self-tie belt before washing). Imported.

S(4-6) **753-261**

M(8-10) **753-276**

L(12-14) **755-116**

XL(16) **755-120**

1X(18W-20W) **755-135**

2X(22W-24W) **755-298**

3X(26W-28W) **755-317**

reg. \$46.99

**\$23.99**





#### ❖ Twofer Top

Black V-neck dress with sheer long sleeves. Body: polyester/spandex. Trim and lining: 100% polyester. Center back length: 36½" on M; 38" on 1X. Machine wash, line dry. Imported.

M(8-10) **759-289** 1X(18W-20W) **759-480**

L(12-14) **759-308** 2X(22W-24W) **760-035**

XL(16) **759-312** 3X(26W-28W) **760-274**

reg. \$46.99

**\$23.99**



#### ❖ Hoodie Dress

Dusty rose dress with drawstring hood, front kangaroo pocket and long sleeves with cuff. Polyester/rayon/spandex. Center back length: 34½" on M; 37" on 1X. Machine wash and dry. Imported.

M(8-10) **602-256**

1X(18W-20W) **602-294**

L(12-14) **602-260**

2X(22W-24W) **602-309**

XL(16) **602-275**

3X(26W-28W) **602-313**

reg. \$49.99

**\$24.99**



#### ❖ Sporty Leggings

Dusty blue classic-fit, pull-on leggings with two side pockets and elastic waistband. Polyamide/spandex. Inseam: 26½" on all sizes. Machine wash, dry flat. Imported.

M(8-10) **600-473** 1X(18W-20W) **601-211**

L(12-14) **600-511** 2X(22W-24W) **601-250**

XL(16) **600-655**

reg. \$46.99

**\$23.99**



#### ❖ Printed Dress

Printed sleeveless, knee-length dress with V-neck. Cinched waist with self-tie fabric belt. Back tie-closure. Lined. Body and lining: 100% polyester. Center back length: 39½" on M; 40½" on 1X. Machine wash, line dry. Imported.

S(4-6) **506-822** 1X(18W-20W) **506-932**

M(8-10) **506-860** 2X(22W-24W) **506-947**

L(12-14) **506-909** 3X(26W-28W) **506-951**

XL(16) **506-928**

reg. \$49.99

**\$27.99**



#### ❖ Contrast Stitch Animal Pullover

Black and grey animal-print pullover with waffle texture, magenta contrast stitching and high-low hem. 100% polyester. Center back length: 25½" on M; 27" on 1X. Machine wash and dry. Imported.

M(8-10) **199-293** 1X(18W-20W) **199-475**

L(12-14) **199-384** 2X(22W-24W) **199-494**

XL(16) **199-403** 3X(26W-28W) **199-638**

reg. \$46.99

**\$19.99**



#### ❖ Black Print Pullover

Blue soft brushed knit top with black floral print, V-neck and long sleeves. Polyester/spandex. Center back length: 31" on M; 32" on 1X. Machine wash, line dry. Imported.

M(8-10) **507-685**

L(12-14) **507-780**

XL(16) **507-795**

reg. \$44.99

**\$22.99**

1X(18W-20W) **507-800**

2X(22W-24W) **507-829**

3X(26W-28W) **507-833**



#### ❖ Mixed Open Knit Sweater

Navy multi-pattern open-knit sweater with round neckline and long sleeves. 100% cotton. Center back length: 23" on M; 26" on 1X. Hand wash, dry flat. Imported.

M(8-10) **666-619** 1X(18W-20W) **666-972**

L(12-14) **666-638** 2X(22W-24W) **667-285**

XL(16) **666-862** 3X(26W-28W) **667-380**

reg. \$53.99

**\$29.99**



#### ❖ Quilted Pullover

Ivory soft-quilted crew-neck pullover with long sleeves and a rounded hem with side splits. Shell and fill: 100% polyester. Lining: polyester/spandex. Center back length: 24" on M; 26" on 1X. Machine wash and dry. Imported.

M(8-10) **665-589**

L(12-14) **665-760**

XL(16) **665-828**

reg. \$39.99

**\$20.99**

1X(18W-20W) **665-832**

2X(22W-24W) **665-851**

3X(26W-28W) **665-976**

# SAVE UP TO 50%

pages 6-7

## ❖ Plaid PJ Set

Two-piece set comes in a plaid drawstring bag. Ivory top with contrast overlock stitch and crew neck and short sleeves. Plaid bottoms with side seam pockets and drawstring waist. 100% cotton. Machine wash and dry. Imported. reg. \$46.99

**\$23.99 each set**

### Men:

Center back length: 29" on L.

Inseam: 30" on all sizes.

S **663-529** XL **663-567**

M **663-548** XXL **663-605**

L **663-552**

### Women:

Center back length: 25½" on M; 27" on 1X.

Inseam: 30" on all sizes.

S(4-6) **663-696** XL(16) **663-806**

M(8-10) **663-787** 1X(18W-20W) **663-830**

L(12-14) **663-791** 2X(22W-24W) **663-863**

3X(26W-28W) **663-878**



Comes in a coordinating drawstring bag



## ❖ Embossed Pullover

Olive stretch-velour pullover with animal-print embossing, crew neck and long sleeves. Polyester/spandex. Center back length: 24" on M; 26" on 1X. Machine wash and dry. Imported.

S(4-6) **436-242** 1X(18W-20W) **436-352**

M(8-10) **436-257** 2X(22W-24W) **436-439**

L(12-14) **436-295** 3X(26W-28W) **436-534**

XL(16) **436-333**

reg. \$46.99

**\$22.99**



## ❖ Quarter-Zip Pullover

Dusty green pullover with mock neck, front quarter-zip and long sleeves with snap detail on cuffs. Polyester/rayon/spandex. Center back length: 25" on M; 26" on 1X. Machine wash and dry. Imported.

M(8-10) **596-043** 1X(18W-20W) **597-240**

L(12-14) **597-126** 2X(22W-24W) **597-312**

XL(16) **597-183** 3X(26W-28W) **597-551**

reg. \$49.99

**\$25.99**

# SAVE UP TO 50%

pages 8-9



## ❖ Distressed Sneaker

Distressed grey metallic faux-leather lace-up sneaker with ivory faux-shearling trim on back, tongue and lining. Man-made materials. Imported.

6 508-476 9 508-681

7 508-571 10 508-696

8 508-658 11 508-700

reg. \$39.99

**\$20.99**



## ❖ Grommet Mule

Black faux-leather, slip-on mule with silver grommet and faux-suede bow detail. Man-made materials. Imported.

6 757-563 9 757-597

7 757-578 10 757-601

8 757-582

reg. \$44.99

**\$21.99**



## ❖ 2-Pack Slouch Socks

Includes pink and ivory tall slouchy ribbed-knit socks. Polyester/spandex/rubber. 11½" L (fully extended). Fits shoe sizes 6-10. Machine wash and dry. Imported.

**438-981**

reg. \$14.99

**\$6.99 the pack**



## ❖ Sporty Clog

Tan slip-on clog with sporty, chunky outsole, adjustable strap and buckle detail. Platform outsole: 1" L. Man-made materials. Imported.

6 785-596 9 785-653

7 785-600 10 785-687

8 785-615 11 785-710

reg. \$49.99

**\$24.99**





❖ **Men's 2-Pack Cozy Socks**

Includes dark grey and ivory crew-length socks. Polyester/spandex. Fits shoe sizes 7-11½. Machine wash and dry. Imported.

**663-500**

reg. \$12.99

**\$4.99 the pack**



❖ **Women's 2-Pack Cozy Socks**

Includes ivory and rose crew-length socks. Polyester/spandex. Fits shoe sizes 6-10. Machine wash and dry. Imported.

**663-495**

reg. \$12.99

**\$4.99 the pack**



❖ **3-Pack Ankle Socks**

Pack of 3 multicolor socks with cushioned arch support. Polyester/rubber/spandex. Fits shoe sizes 6-10. Machine wash and dry. Imported.

**600-344**

reg. \$12.99

**\$5.99 the pack**



❖ **3-Pack Scallop-Edge Socks**

Includes black, grey and ivory scalloped-edge socks with rib-textured detail on front. Polyester/spandex. Fits shoe sizes 6-10. Machine wash and dry. Imported.

**785-539**

reg. \$16.99

**\$7.99 the pack**



#### ❖ Fashion Cape

Plaid open-front cape with black blanket-stitch detail. Drapes over shoulders. 100% polyester. Total body length: 56" on XS-XL; 61" on 1X-3X. Dry clean only. Imported.

XS(0-2)-XL(16) **494-789**

1X(18W-20W)-3X(26W-28W) **494-956**

reg. \$46.99

**\$24.99**



#### ❖ Casual Headband

Over-the-ear headband with tonal stitching and adjustable closure. Polyester/rayon/spandex. One size fits most; 25" total length. Machine wash and dry. Imported.

reg. \$6.99

**\$2.99 each**

Dusty  
Green  
**602-347**

Dusty  
Rose  
**602-423**

#### ❖ Knit Scarf

Grey lightweight oversized scarf with contrast blue-edge stitching. Polyester/cotton. 72" L x 35" W. Machine wash and dry. Imported.

**602-810**

reg. \$19.99

**\$8.99**

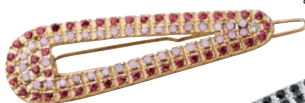


# SAVE UP TO 55%

pages 10-11



Goldtone/Pink  
and Red Stones  
**605-150**



Silvertone/  
Jet- and Hematite-  
colored Stones  
**605-714**



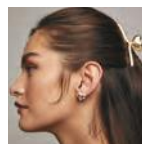
## Perfect Pavé Hairpin Set

Sets of two. Each pin, approx. 2½" L.  
reg. \$16.99

**\$5.99 each set**



hair clip and  
earring set



## Puffed Heart Hair Clip and Earring Set

Goldtone. Clip, 3½" L. Pierced studs, ½" L.  
**757-688** reg. \$16.99

**\$5.99 the set**



## ❖ Shiny Tote

Black fabric and leatherlike tote with magnetic closure. Includes detachable zipper pouch. Upper portion and inner pouch: 100% polyester. Base and handles: man-made materials. Approx. 15¼" L x 4¼" W x 13¼" H. Handle drop, 11" L. Inner pouch: 7" L x ¼" W x 4" H. Imported. **434-106**

\$39.99 retail value

**\$17.99**



## ❖ Embossed Crossbody Bag

Black double-compartment crossbody bag with matte faux-crocodile texture, zipper closures and adjustable strap. Man-made materials. 7" L x 5" H x ¾" D. Strap drop: 25" when fully extended. Imported. **757-559**

reg. \$28.99

**\$12.99**

# SAVE UP TO 60%

pages 12-13

## Pearly Heart Collection

Goldtone with pearly accent stones.

### Trio Necklace

16½" L with 3½" extender. Heart trio pendant, approx. 1" L.

**757-620**

reg. \$12.99

**\$6.99**

### Trio Pull-Cord Bracelet

One size fits most; adjustable pull cord. Smallest heart, ¼" L; largest, ½" L.

**757-635**

reg. \$12.99

**\$6.99**

### Ring

Approx. ½" W.

8 **757-654**

10 **757-673**

reg. \$9.99

**\$3.99**



## Pearly Elegance Victorian Set

Pearlesque beads with clear stone and goldtone bead accents.

Two-row necklace, 14¼" L with 4" extender. Pierced studs, approx. ½" L.

**496-542**

reg. \$29.99

**\$14.99 the set**



necklace and earring set





**Mother-of-Pearl  
Sincere Heart Bracelet**

With mother-of-pearl hearts. One size fits most; adjustable pull-cord bracelet.  
reg. \$16.99

**\$6.99 each**



**Beads of Empowerment Bracelet**

Multicolor beads with goldtone accents and CZ charm. Stretches to fit most.  
reg. \$9.99

**\$4.99 each**



**Pearly Delight  
Linear Earrings**

Goldtone with pearlesque details. Approx. 2" L drops. Fishhook. Pierced.

**441-491**

reg. \$12.99

**\$4.99**



**Pearly Delight Pull-Cord  
Bracelet**

Goldtone with pearlesque details. One size fits most.

**441-362**

reg. \$12.99

**\$4.99**



Silvertone/Jet-  
and Hematite-  
colored Stones  
605-752



Goldtone/  
Pink and  
Red Stones  
605-767

**Perfect Pavé  
Hoop Earrings**  
Approx. 1½" L.  
Pierced.  
reg. \$12.99  
**\$4.99 each pair**

**Knotted Orbital  
Pendant  
Necklace**

Silvertone with  
pavé stone  
accents.  
30" L with 3½"  
extender.  
496-739  
reg. \$24.99  
**\$10.99**



**Pavé Wave  
Necklace and  
Earring Set**

Goldtone twist  
detail with  
pavé stones.  
Necklace,  
16½" L with  
3½" extender.  
Lobster closure.  
Pierced drops,  
2" L.  
513-562  
reg. \$19.99  
**\$7.99  
the set**



**Interlocking  
Crystal Hoop Earrings**

Silvertone with pavé stone  
accents. Approx. 1¾" L.  
Pierced. 496-796  
reg. \$19.99  
**\$7.99**



**Bold Pavé Chain Link Collection**

Silvertone links accented with pavé stones.

**Necklace and Earring Set**  
Necklace, 16½" L with 3½"  
extender. Lobster closure.  
Pierced drops, 1½" L. 511-890  
reg. \$24.99  
**\$10.99 the set**

**Bracelet**  
7¼" L with 1½"  
extender. Lobster  
closure. 511-961  
reg. \$16.99  
**\$7.99**

**Pavé Teardrop  
Pendant Necklace  
and Earring Set**

Pear-shaped pavé  
drops. 16½" L  
with 3½" extender.  
Pendant, 1" L.  
Lobster closure.  
Pierced drops, 1" L.  
Goldtone 511-813  
Silvertone 511-828  
reg. \$19.99  
**\$8.99 each set**



# SAVE UP TO 60%

pages 14-15

## Sweetheart Sparkle Statement Earrings

Goldtone with pearlesque stones and colored glass stones. Approx. 2½" L. Pierced. **680-357** reg. \$16.99

**\$6.99**

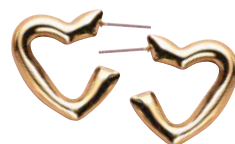


## Goldtone Love Hoop Earrings

Goldtone. Approx. 1" L. Pierced. **680-672**

reg. \$9.99

**\$3.99**



## Paired Hearts Statement Earrings

Goldtone with red enamel. Approx. 1" L. Pierced. **680-759** reg. \$12.99

**\$6.99**



**Gleaming Silvertone Collection**  
Silvertone with purple and clear accent stones.

## Necklace and Earring Set

Necklace, 26" L with 3½" extender. Pendant, approx. 2½" L. Pierced earrings, ¾" L. **681-941** reg. \$22.99

**\$6.99 the set**

## Stretch Bracelet

Stretches to fit most. ¾" W. **682-130** reg. \$19.99

**\$6.99**



Rose/Rose Goldtone/  
Abalone Stones  
**763-326**

Cross/Silvertone/  
Reconstituted  
Turquoise Stone  
**763-565**

## Divine Love Necklace and Earring Set

Necklaces, 16" L with 3½" extender. Pendants range from 1¼"-1½" L. Pierced drops range from ¾"-1" L. reg. \$16.99

**\$6.99 each set**



# SAVE UP TO 60%

pages 16-17



necklace and  
earring set

## Filigree Statement Collar Necklace and Earring Set

Goldtone. Necklace, 16½" L with 3½" extender.  
Lobster closure. Pierced drops, 1" L.

**512-551**

reg. \$24.99

**\$10.99 the set**



Jet Black/  
Silvertone  
**513-141**



Crystal  
Clear/  
Goldtone  
**513-266**

## Winged Brilliance Earrings

Jewel-tone glass  
stones with CZ  
accent. Approx. 1½"  
L. Pierced.  
reg. \$16.99



Emerald  
Green/  
Goldtone  
**513-065**

**\$6.99 each pair**

## Blue Cluster Tonal Collection

Shades of blue glass  
stones set in silvertone.

### Necklace

16½" L with 3½" extender.  
Pendant, 1¼" L. Lobster  
closure.

**514-588**

reg. \$12.99

**\$5.99**

### Earrings

Drops, 1" L. Pierced.

**514-650**

reg. \$12.99

**\$5.99**

### Ring

Approx. 1" W.

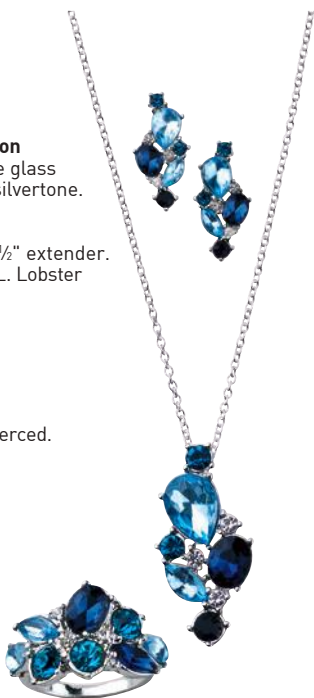
6 **514-592**

8 **514-611**

10 **514-630**

reg. \$12.99

**\$5.99**



## Romantic Red Beaded Set

Three-piece set.  
Mother-of-pearl  
pendant and motifs,  
plus colored faceted  
beads set in  
goldtone. Necklace,  
18" L with 3½"  
extender. Bracelet,  
one size fits most.  
Earrings, approx.  
1½" L. Pierced.

**667-672**

reg. \$32.99

**\$14.99 the set**

necklace,  
earring and  
bracelet set



**Ribbon Woven Chain Collection**

Goldtone links entwined with black ribbon fabric.

**Collar Necklace**

16½" L with 3½" extender.

**511-320**

reg. \$16.99

**\$6.99**

**Bracelet**

7¼" L with 1" extender.

**511-718**

reg. \$12.99

**\$4.99**

**Hoop Earrings**

With CZ stone accent. Approx. 2" L. Pierced.

**511-809**

reg. \$12.99

**\$4.99**



**Starry Droplets Collection**

Silvertone with sparkling stones and iridescent teardrop stone accents.

**Lariat Necklace**

16½" L with 3½" extender. Drop, approx. 2½" L.

**513-744**

reg. \$16.99

**\$6.99**

**Linear Earrings**

Drops, approx. 2" L. Pierced.

**513-797**

reg. \$12.99

**\$4.99**



**Midnight Garden Collection**

Jet black glass stones set in goldtone.

**Necklace**

With pavé accents. 18" L with 3½" extender.

**496-887**

reg. \$29.99

**\$14.99**

**Earrings**

Approx. 1¾" L drops.

Pierced. **496-906**

reg. \$19.99

**\$7.99**



Goldtone/  
Clear Stones  
**602-055**



Silvertone/  
Sapphire-  
colored  
Stones  
**602-131**

### Eternal Grace Pavé Necklace

With glass stones. 16½" L with 3½" extender. Pendant, ½" L. reg. \$12.99

**\$4.99 each**



Clear/Goldtone **602-222**



Blue/Silvertone **602-170**



Rose/Goldtone **602-199**

### Sparkle Color Pop Bracelet

With glass stones. 7¼" L with 1" extender. reg. \$9.99

**\$4.99 each**

### Interlaced Metal Collection

Interwoven and chain-link designs set in goldtone.

#### Link Necklace

16½" L with 3½" extender. Lobster closure. **606-600** reg. \$19.99

**\$7.99**

#### Link Bracelet

7¼" L with 1" extender. Lobster closure. **606-615** reg. \$12.99

**\$4.99**

#### Dome Ring

½" W.  
8 **606-581**  
10 **606-596**  
reg. \$12.99

**\$4.99**



# SAVE UP TO 60%

pages 18-19

**Gleaming Collection**  
Statement metal  
hoops set in goldtone.

**Ripple  
Hoop Earrings**  
1½" L. Pierced.  
**606-467**  
reg. \$16.99

**\$6.99**

**Twist Hoop Earrings**  
1½" L. Pierced.  
**606-471**  
reg. \$16.99

**\$6.99**

**Hammered  
Hoop Earrings**  
2" L. Pierced.  
**606-486**  
reg. \$12.99  
**\$4.99**



**Statement Mesh  
Hoop Earrings**  
Silvertone. Approx.  
1½" L. Pierced.  
**598-376**  
reg. \$12.99

**\$4.99**

**Cascading Mesh  
Tassel Necklace**  
Silvertone. 26" L with 3½"  
extender. **598-319**  
reg. \$29.99  
**\$13.99**



**Modern Mist  
Collection**  
Set in silvertone.

**Necklace and  
Earring Set**  
Marbled blue and grey  
beads with silvertone  
accents. Necklace, 32" L  
with 3½" extender. Drops,  
approx. 1" L. Pierced.  
**612-420**  
reg. \$22.99

**\$8.99 the set**

**Statement Ring**  
Blue oval  
cat-eye stone.  
Approx. 1" L.  
6 **612-545**  
8 **612-617**  
10 **612-621**  
reg. \$12.99  
**\$4.99**



Goldtone/  
Mother-of-Pearl  
**606-209**

Silvertone/Lapis  
**606-400**

genuine  
mother-of-  
pearl

necklace  
and earring  
sets

genuine  
lapis

**Harmonious Beauty  
Necklace and Earring Set**  
With a semi-precious stone and clear glass  
stone accents. Necklace, 16½" L with 3½"  
extender. Pierced drops, approx. 1½" L.  
reg. \$22.99

**\$8.99 each set**

# SAVE UP TO 55%

pages 20-21



## **Lovestruck Mother-of-Pearl Necklace and Earring Set**

Mother-of-pearl stone with pavé accents set in goldtone. 16 1/2" L with 3 1/2" extender. Pendant, 1" L. Lobster closure. Pierced drops, 3/4" L.

**772-551** reg. \$16.99

**\$6.99**



## **Modern Square Mesh Strap Watch**

Unisex. 10" L with 40mm x 45mm case. Water-resistant to 3 ATM.

**598-180**  
reg. \$39.99

**\$17.99**



## **Heartfelt Love Pavé Ombré Collection**

Glass stones in shades of yellow and pink set in goldtone.

### **Bracelet**

One size fits most; adjustable pull cord. 1" L pendant.

**664-420**

reg. \$16.99

**\$6.99**

### **Ring**

1/2" W.

6 **664-161** 10 **664-400**

8 **664-248**

reg. \$12.99

**\$4.99**

### **Necklace**

16 1/2" L with 3 1/2" extender. Pendant, 1" L. Lobster closure.

**663-940** reg. \$16.99

**\$6.99**

### **Earrings**

3/4" L. Pierced.

**664-051** reg. \$16.99

**\$6.99**

### **Watch**

Leatherlike strap, 9" L. Goldtone case, 28mm diam. Water-resistant to 3 ATM.

**663-920** reg. \$39.99

**\$17.99**





**Sculpted Metal  
Teardrop Collection**  
Teardrop designs  
in goldtone.

**Necklace and  
Earrings Gift Set**

Layered necklace,  
16½" L with 3½" extender.  
Pendant, ¾" L. Lobster  
closure. Includes two  
pairs of earrings;  
largest: ¾" L. Pierced.

**433-980**  
reg. \$19.99

**\$8.99 the set**

**Bypass Bangle**

Hinge bangle.  
One size fits most.  
**605-145**  
reg. \$16.99

**\$6.99**

**Bypass Ring**

½" W.  
6 433-994  
8 434-000  
10 434-068  
reg. \$12.99

**\$5.99**



**Love Struck  
Earring Pack**

Set of four goldtone  
studs with CZ  
accent stone,  
colored enamel and  
clear glass stones.  
¼" L. Pierced.

**667-634**  
reg. \$16.99

**\$6.99  
the pack**



set of 4 pairs

## STAINLESS STEEL



his and  
hers rings

unisex  
earrings



### Stainless Steel Chain Reaction Collection

Stainless steel with  
gold ion-plated  
accents.

### His/Hers Two-Tone Unisex CZ Earrings

With CZ stone. ¼" L.

Pierced.

**762-592**

reg. \$24.99

**\$12.99**

### Band Ring

Sizes:

His	Hers
9 <b>762-645</b>	7 <b>762-808</b>
10 <b>762-679</b>	8 <b>762-827</b>
11 <b>762-740</b>	9 <b>762-846</b>
13 <b>762-760</b>	

reg. \$29.99

**\$13.99 each**

### Unisex CZ Necklace

With CZ stone accent.

17" L with 1" extender.

Pendant, 1¼" L.

Spring-ring closure.

**762-520**

reg. \$32.99

**\$14.99**

### His/Hers Two-Tone Bangle

One size fits most.

His	Hers
<b>762-626</b>	<b>762-630</b>

reg. \$44.99

**\$21.99 each**

unisex  
necklace



his and hers  
bangles



# SAVE UP TO 50%

pages 22-23

## Sterling Silver Stunning Heart Drop CZ Collection

CZ stones set in  
.925 sterling silver.

### Necklace

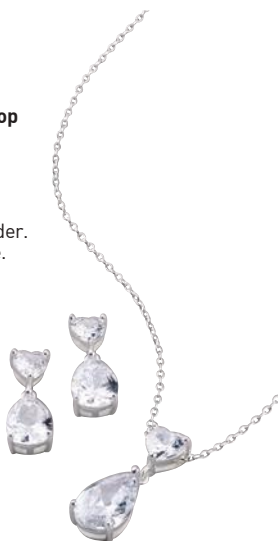
17" L with 1" extender.  
Spring-ring closure.  
Pendant, 1" L.  
1-carat total  
weight equivalent.  
**678-494**  
reg. \$58.99

**\$27.99**

### Earrings

Drops, ¾" L.  
4.5-carat total  
weight equivalent.  
Pierced. **680-247**  
reg. \$58.99

**\$27.99**



## Sterling Silver Forever Love CZ Collection

CZ stones set in  
.925 sterling silver.

### Necklace

17" L with 1" extender.  
Spring-ring closure.  
1-carat total weight  
equivalent.  
**675-514**  
reg. \$64.99

**\$31.99**

### Eternity Ring

3-carat total  
weight  
equivalent.  
6 **675-590**  
7 **676-290**  
8 **676-305**  
9 **677-670**  
reg. \$58.99

**\$27.99**



## Sterling Silver Genuine Garnet Collection

Genuine garnet stones set  
in .925 sterling silver.

### Genuine Garnet and CZ Necklace

With CZ stone. 17" L  
with 1" extender.  
Pendant, 1" L. Spring-  
ring closure. **601-427**  
reg. \$53.99

**\$24.99**

### Genuine Garnet and CZ Ring

With CZ stone. ½" W.  
6 **601-503**  
7 **601-761**  
8 **601-776**  
9 **601-848**  
reg. \$46.99

**\$22.99**

### Genuine Garnet Stud Earrings

¾" L.  
Pierced.  
**601-890**  
reg. \$42.99

**\$21.99**



genuine  
garnet  
stones



# Quilty Pleasure

...without the guilt!  
**Save over 60%.**

## ❖ Quilted Puffer Bag

Black quilted bag with top zipper closure, inner pocket and handle with quilted detail. Body and strap: 100% nylon. Lining: 100% polyester. 16" L x 11½" H x 4" D. Handle drop, 12" L. Imported. \$49.99 retail value

**100-692**

**\$17.99**



While supplies last. No returns. Final sale. Check out more products on [avon.com](https://www.avon.com).

© 2025 The Avon Company. All rights reserved.

CAMPAIGNS 9-10, 2025

THE AVON COMPANY  
165 BROADWAY, NY, NY 10006

**avon.com**



8 88761 73596 2

Single 4771911

Effective until \_\_\_\_\_



See our commitment at  
[www.avon.com/animal-welfare](https://www.avon.com/animal-welfare)