

✦ casa ✦
BRANCA

COLLECTION I

Welcome Home

It's about time... Your well-earned dose of color is here! Introducing Casa Branca, a vision for the home from designer Alessandra Branca.

Featuring refined wovens, playful prints, and textural wallpapers—as well as porcelains and embroidered linens for the table and bed—this debut collection is born of Alessandra's renowned eye for "the mix." We can't wait to see where you take it!

















Animal Kingdom

REVERSIBLE
WOVEN FABRIC

Repeat: 28¾" H x 42½" V

Width: 58"

Content: 100% Linen



Nudo



Celery



Celery



Sky



Indigo





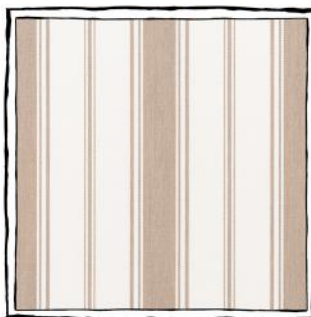
Branca Stripe

PERFORMANCE FABRIC

Repeat: 4½" H

Width: 55"

Content: Solution-Dyed Acrylic



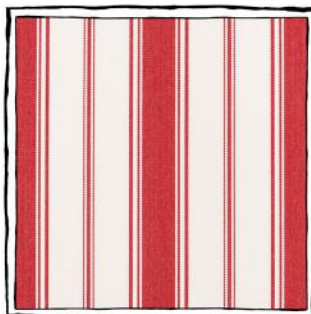
Latte



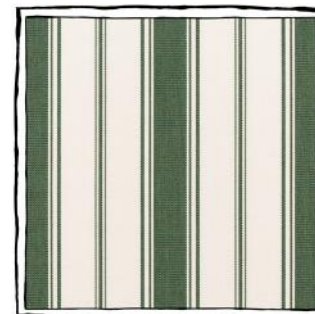
Mushroom



Peach



Branca Red



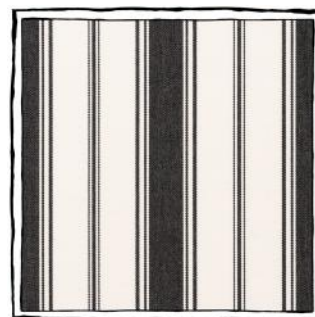
Moss



Portuguese



Blu



Nero

Branca Stripe

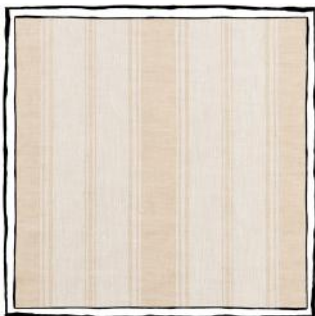
REVERSIBLE WOVEN FABRIC

Repeat: 3½" H

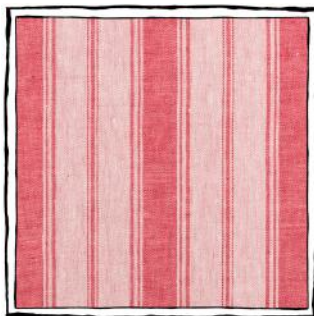
Width: 58"

Content: 100% Linen

Inspired by a room at Potsdam and applied with great love for over 25 years, the Branca Stripe is a pattern you can play with. Create zigzags or concentric squares on pillows, or use it as banding. Call upon a variety of Branca Stripes from across our Wovens, Performance, and Madagascar Wallpaper lines to experiment with scale and texture in an interior.



Nudo



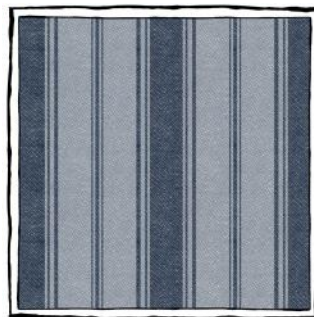
Pom



Roman



Sky



Indigo



Bruno





Cestino

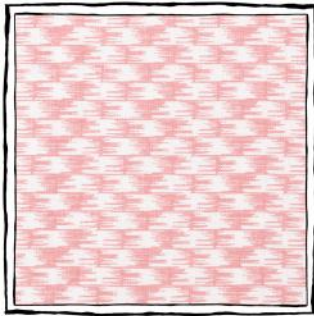
PRINTED FABRIC

Repeat: 2" H x 1 1/16" V

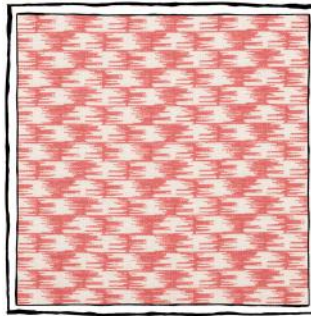
Width: 52"

Content: 100% Linen

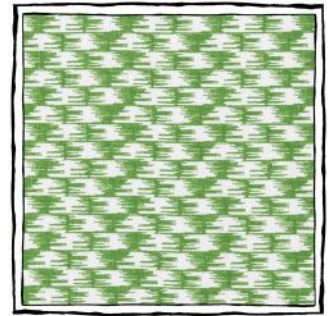
The pattern and structure of a basket – or “cestino” in Italian – is familiar, but we have adapted it for new applications and a subtle visual pun. Equally at home with contemporary art, floral prints, and striking white leather, Cestino can be organic or graphic, depending on its use.



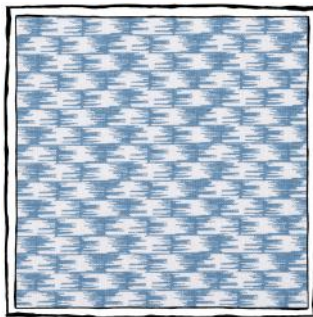
Salmon



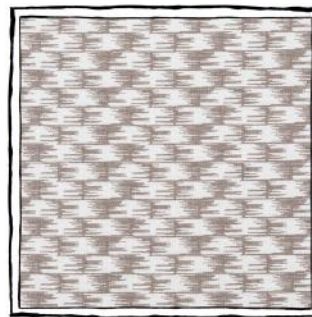
Coral



Tennis



French



Pewter

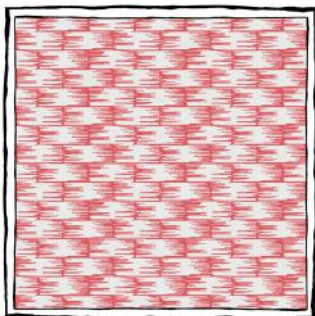
Cestino

WALLPAPER

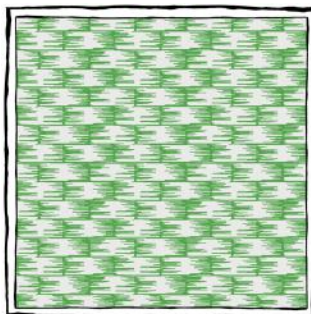
Repeat: 2" H x 1 1/16" V

Width: 26"

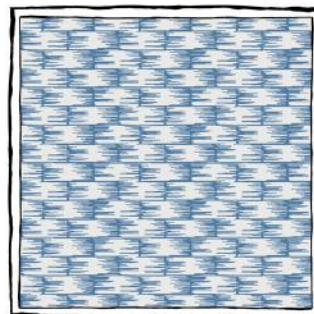
Content: 100% Paper



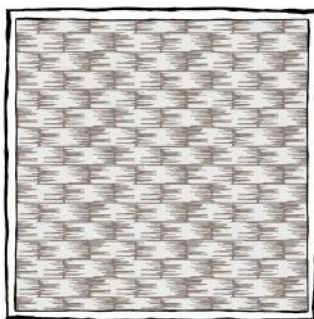
Coral



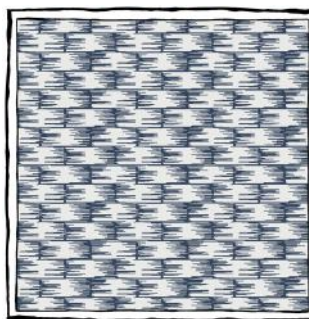
Tennis



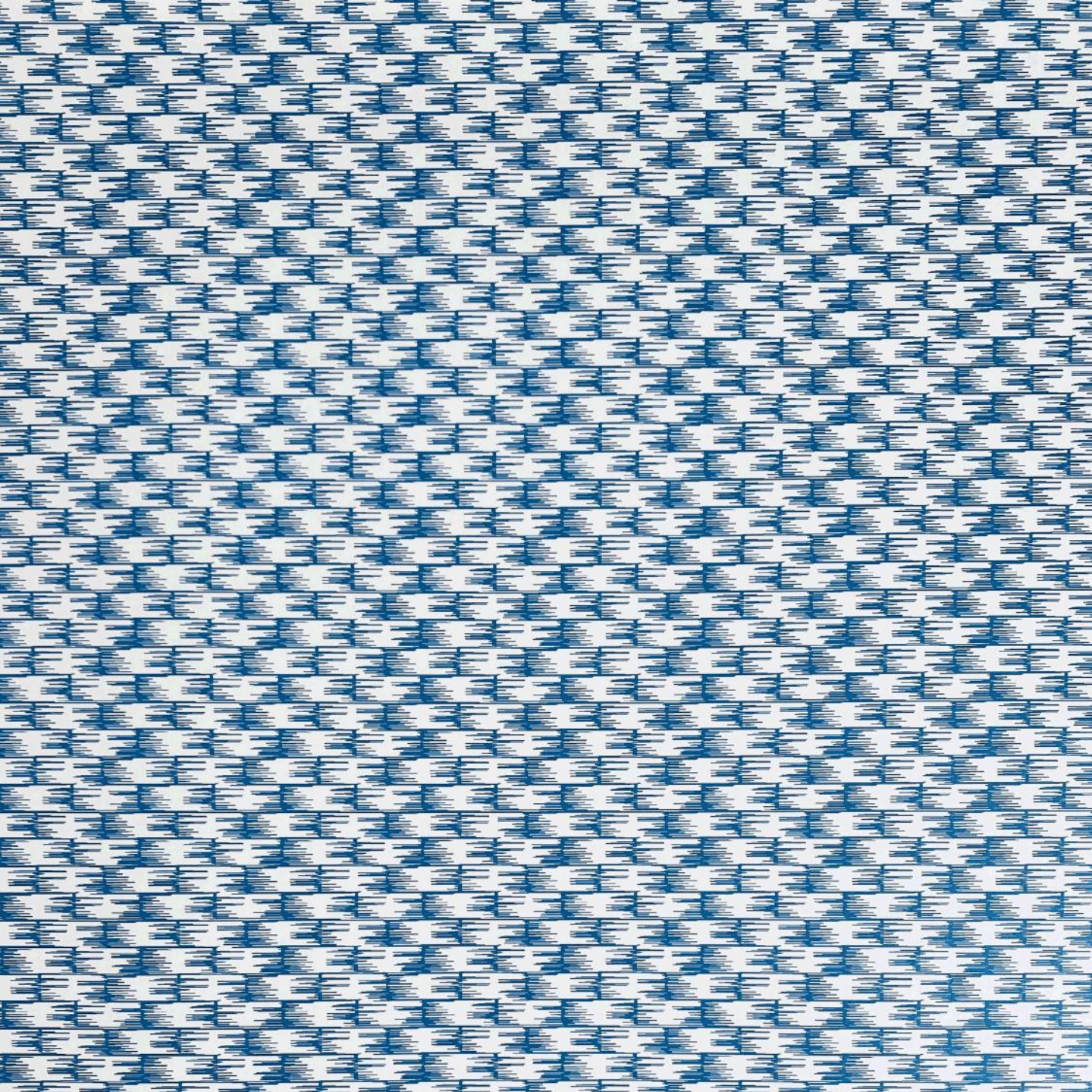
French



Pewter



Eleuthera





Damasco

PRINTED FABRIC

Repeat: 26" H x 25 $\frac{1}{2}$ " V

Width: 52"

Content: 100% Linen

Based on a 16th-century Italian damask, this pattern is a painterly twist on a classic. Our Damasco is designed with an antique and worn effect that highlights its textural qualities. Long considered a symbol of fertility, the featured pomegranate motif has been similarly used to invoke power.



Salmon



Saffron



Sky



French



Pewter

Damasco

WALLPAPER

Repeat: 26" H x 25 $\frac{4}{5}$ " V

Width: 26"

Content: 100% Paper



Coral



Pewter



Pewter





Damasco

REVERSIBLE
WOVEN FABRIC

Repeat: 28¾" H x 29½" V

Width: 58"

Content: 100% Linen



Nudo



Pom



Roman



Indigo



Bruno

Fiamma

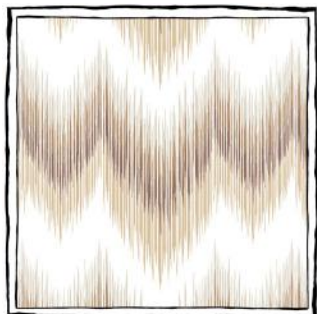
PRINTED FABRIC

Repeat: 8⁵/₈" H x 9" V

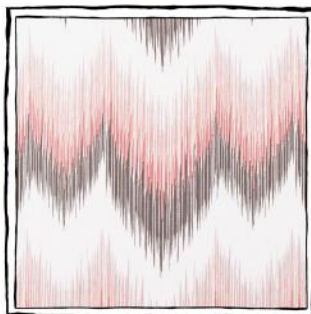
Width: 52"

Content: 100% Linen

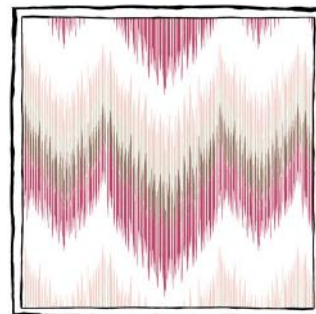
This lively pattern is inspired by one of Alessandra's favorite rugs at chateau Vaux-le-Vicomte and works wonderfully on a chair, pillow, or as an accent. Cut it out as a valance, or use it in full repeat on sofas and chairs. Presented in vibrant combinations of warm and cool colors.



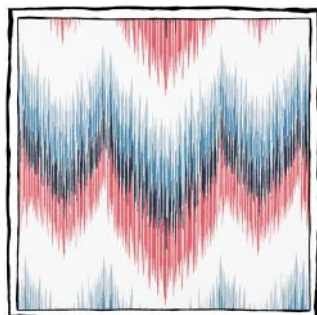
Natural & Taupe



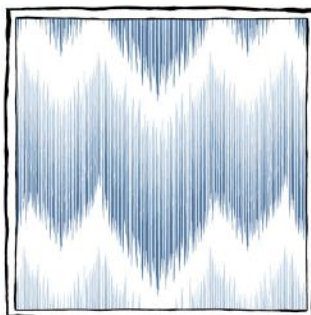
Pewter & Powder



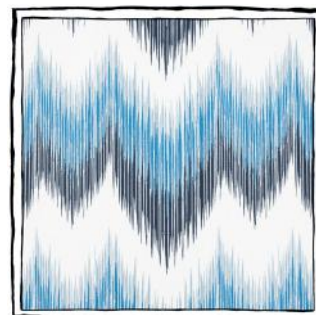
Cerise & Powder



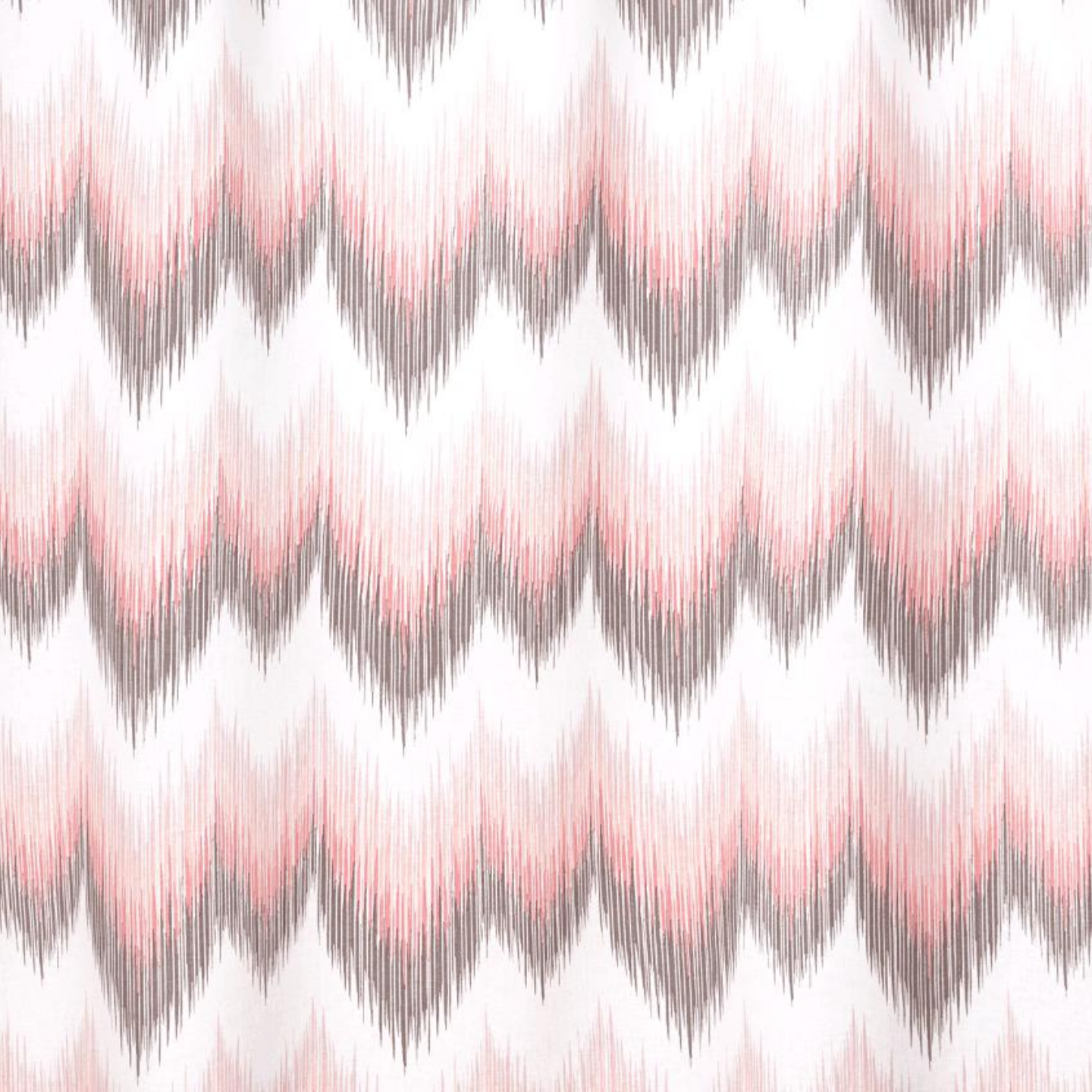
Coral & Sky



Portuguese



Navy & Sky





Foglia

REVERSIBLE
PERFORMANCE FABRIC

Repeat: 27½" H x 37½" V

Width: 55"

Content: Solution-Dyed Acrylic



Latte & Ivory



Latte & Ivory



Latte & Ivory



Ivory & Moss



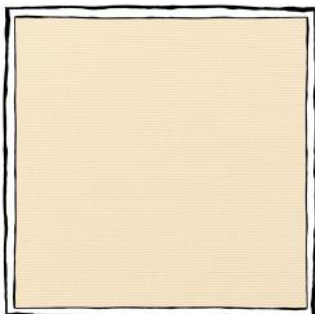
Ivory & Moss

Giardino

PERFORMANCE FABRIC

Width: 55"

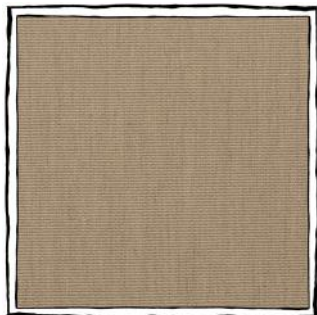
Content: Solution-Dyed Acrylic



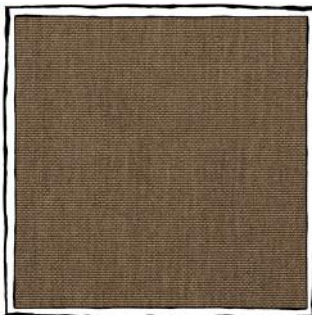
Ivory



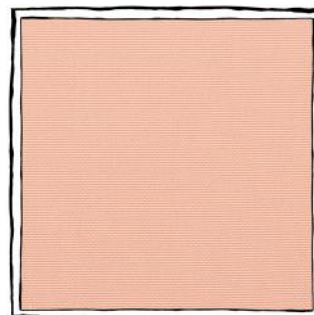
Branca Red



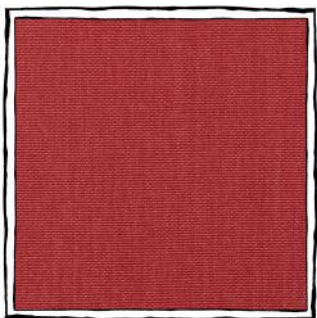
Latte



Mushroom



Peach



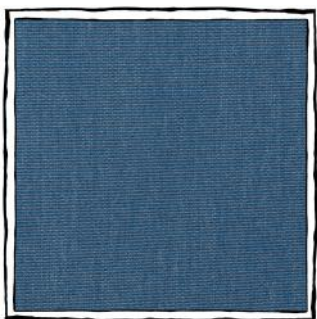
Branca Red



Moss



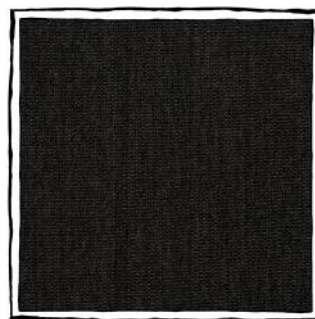
Portuguese



Portuguese

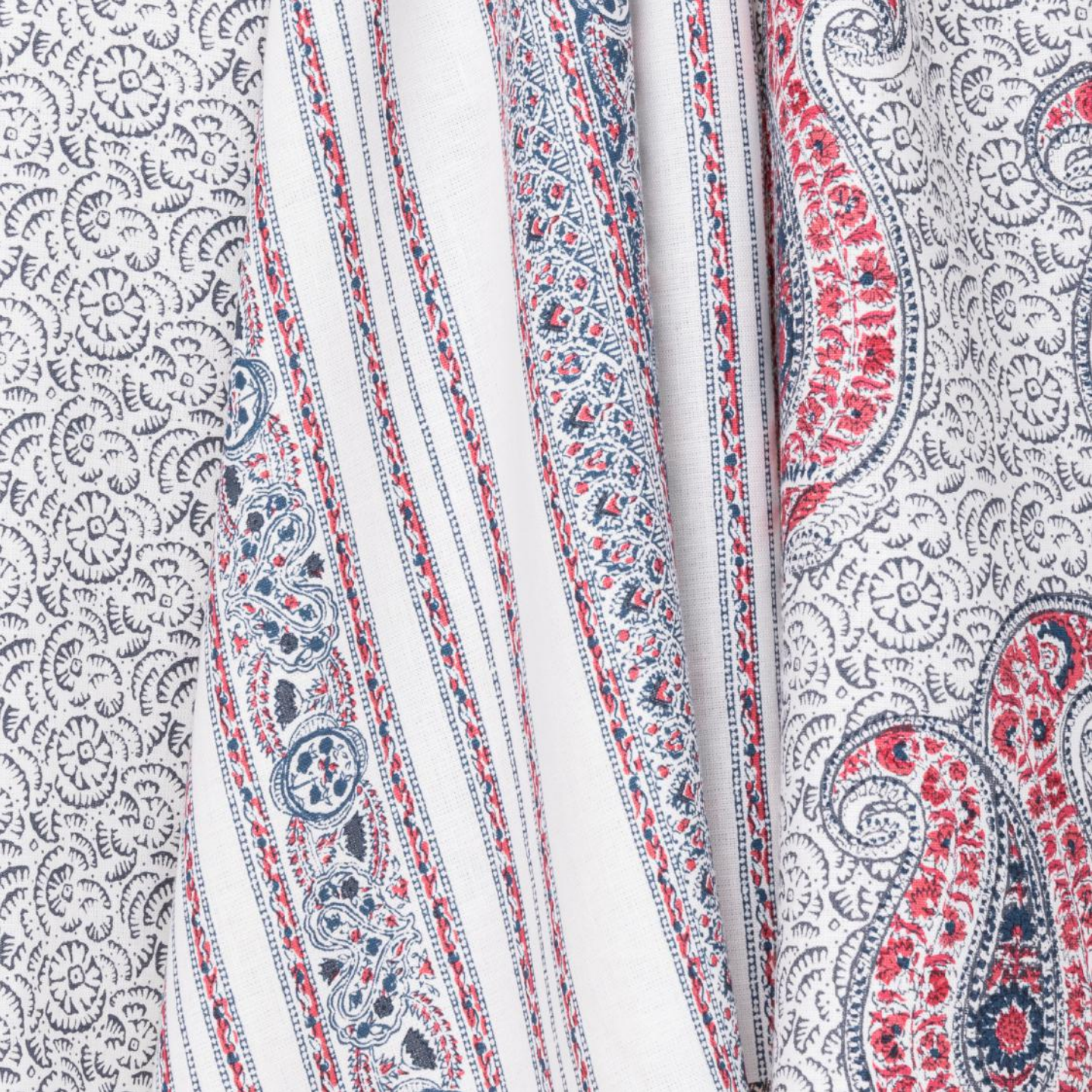


Blu



Nero







Jaipur Paisley

PRINTED FABRIC

Repeat: 8 $\frac{5}{8}$ " H x 17 $\frac{7}{8}$ " V

Width: 51 $\frac{1}{2}$ "

Content: 100% Linen

Named after India's famed Pink City, Jaipur Paisley is based on early Indian paisley patterns. Our Jaipur series is an update to the motif, featuring unexpected color combinations.



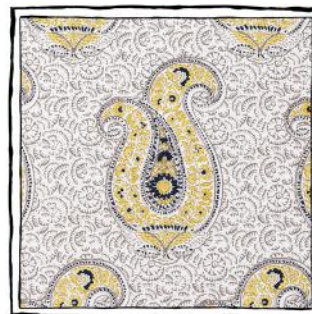
Coral & Salmon



Coral & French



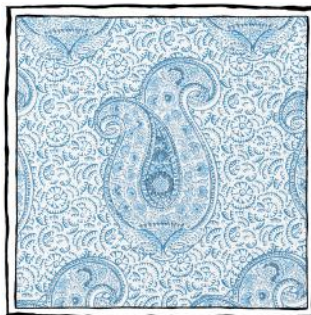
Cerise & Sable



Pewter & Saffron



Tennis & Cerise



French & Sky



Indigo & Imperial

Jaipur Stripe

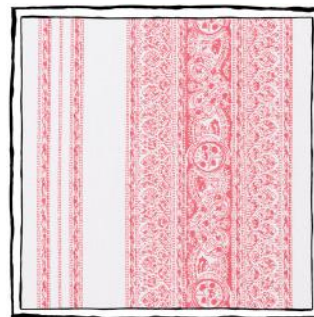
PRINTED FABRIC

Repeat: 17⁵/₁₆" H x 10³/₁₆" V

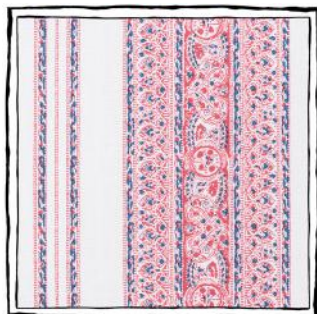
Width: 51¹/₂"

Content: 100% Linen

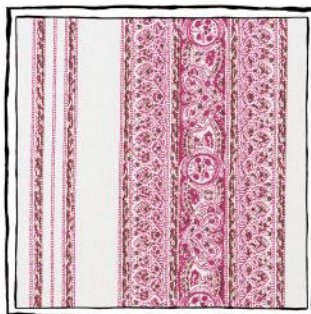
Adapted from our Jaipur Paisley, this rich paisley is elegantly broken up into a stripe that yearns to stretch from ceiling to floor. Use the pattern in full, break it up as trim on a chair and pillow, or use it as banding.



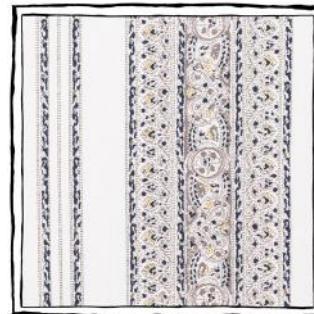
Coral & Salmon



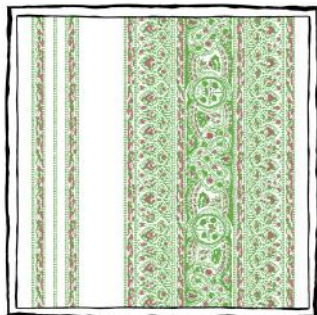
Coral & French



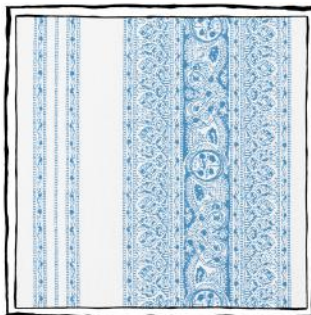
Cerise & Sable



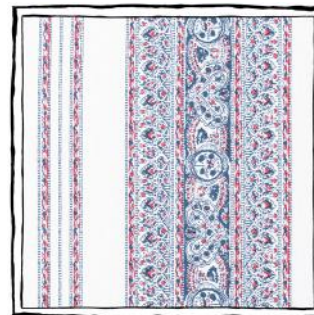
Pewter & Saffron



Tennis & Cerise

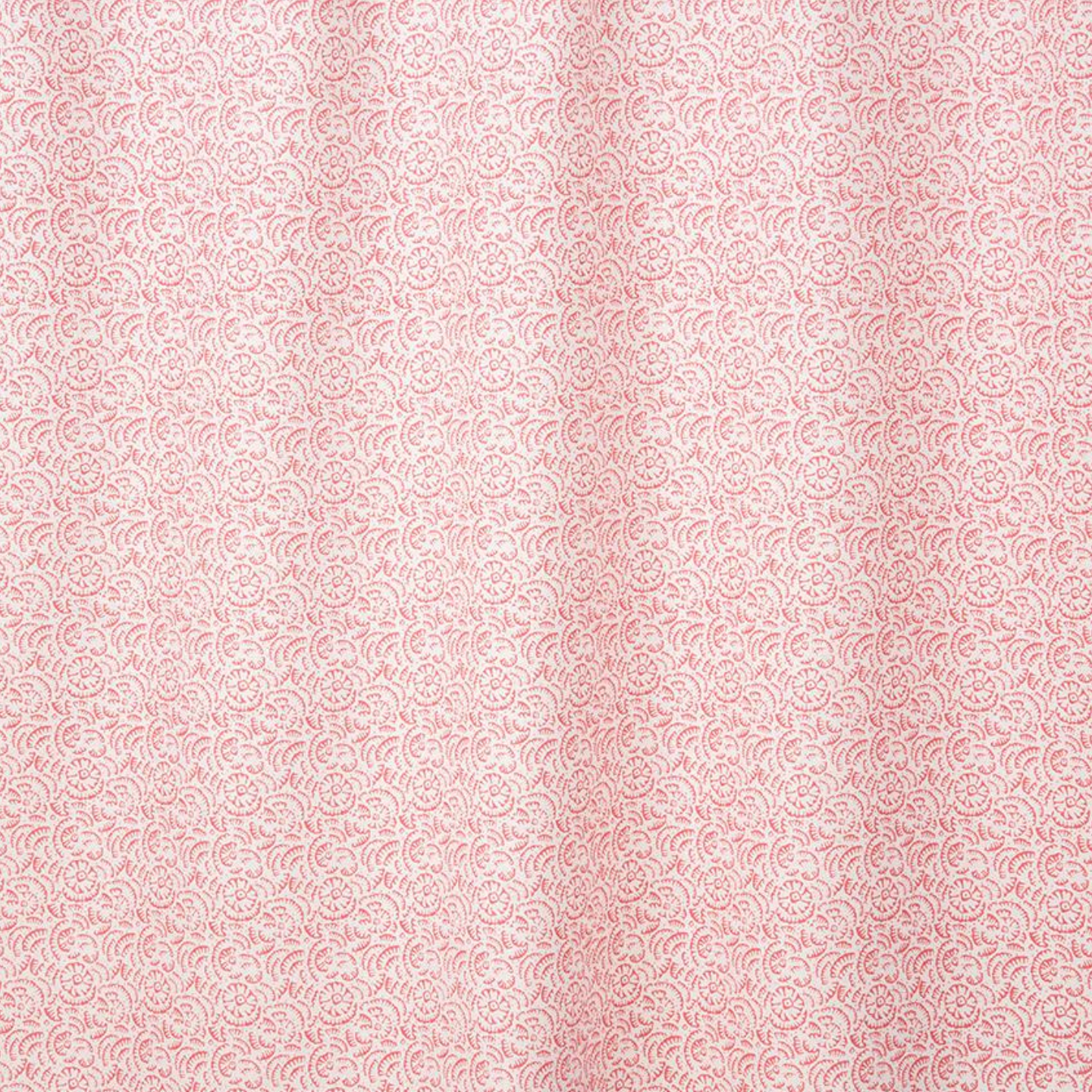


French & Sky



Indigo & Imperial





Jaipur Fiore

PRINTED FABRIC

Repeat: 27/8" H x 3" V

Width: 52"

Content: 100% Linen

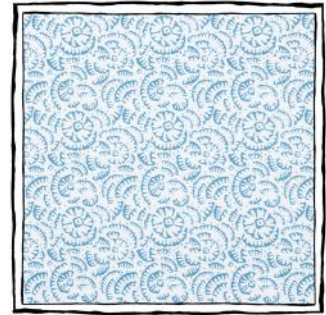
A graphic re-interpretation of a field of daisies, Jaipur Fiore reveals a playful design up close while delicately blending from a distance. The pattern forms the background of our Jaipur Paisley, and is as striking on its own as with its coordinates.



Coral



Cerise



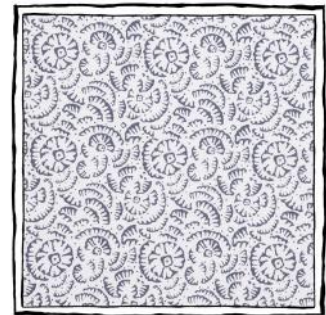
French



Tennis



Pewter



Indigo

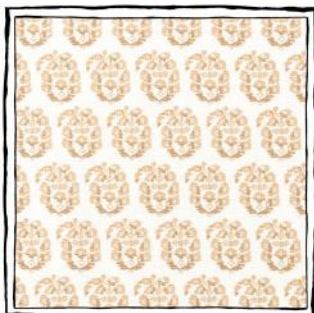
Jodhpur

PRINTED FABRIC

Repeat: 1¼" H x 2⅝" V

Width: 52¼"

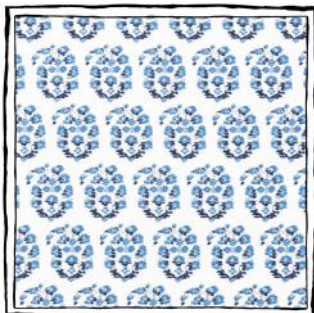
Content: 100% Linen



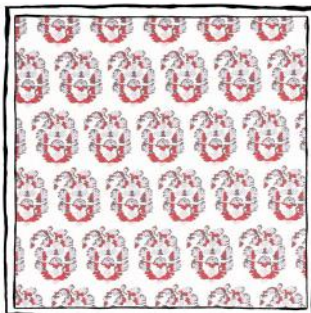
Natural & Toast



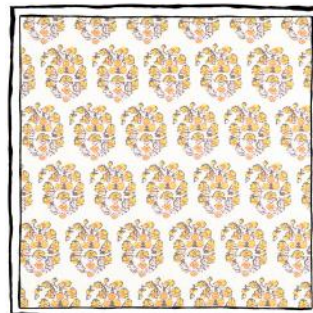
Coral & Sky



Royal & Sky



Coral & Sky



Salmon & Roman



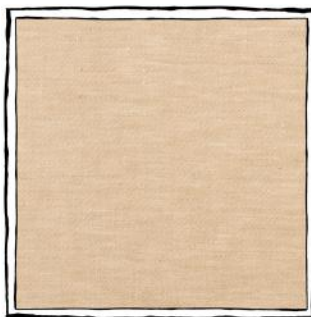


Lino

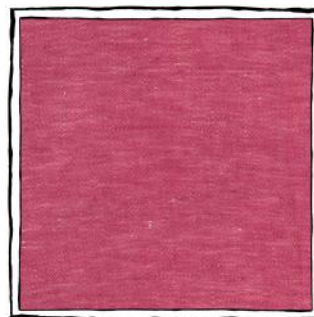
WOVEN FABRIC

Width: 58"

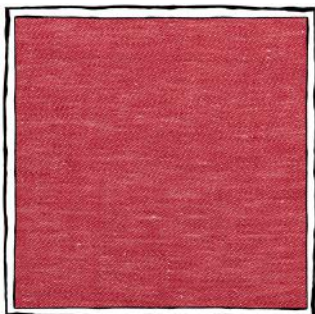
Content: 100% Linen



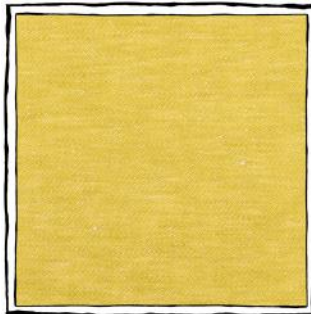
Nudo



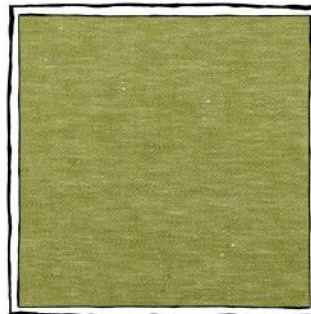
Cerise



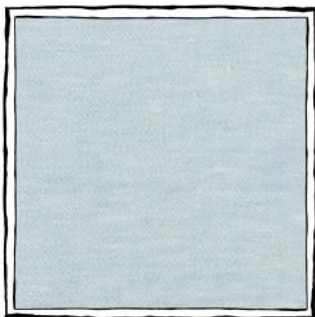
Pom



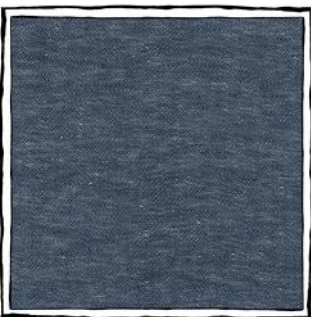
Roman



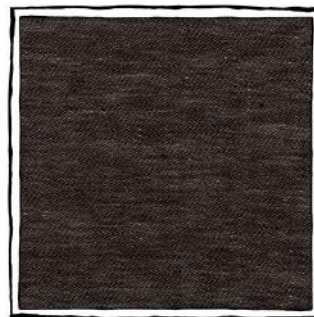
Celery



Sky



Indigo



Bruno

Mini Branca Stripe

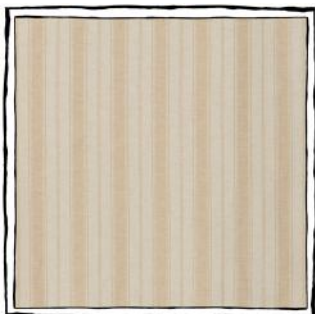
REVERSIBLE
WOVEN FABRIC

Repeat: 1½" H

Width: 58"

Content: 100% Linen

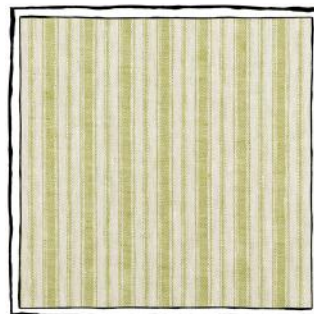
The subtle, textured effect of this miniature interpretation of our Branca Stripe makes it perfect for upholstery, as an accent, or on window treatments.



Nudo



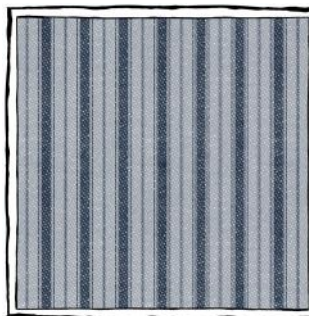
Cerise



Celery



Sky



Indigo





Nantes

PRINTED FABRIC

Repeat: 18" H x 14¾" V

Width: 54½"

Content: 100% Linen

Fresh and retro all at once, Nantes has a painterly quality that suspends time. This print works wonderfully in a breakfast room with its joyful fruits and flowers, and would similarly complement a dining room or bedroom. Nantes is based on an 18th-century silk, reinterpreted for today and offered in colors that bridge across our collections.



Salmon & Roman



Coral & Sky



Coral & French



Saffron & Coral



Celery & Shell



Violet Hour & Salmon

Madagascar

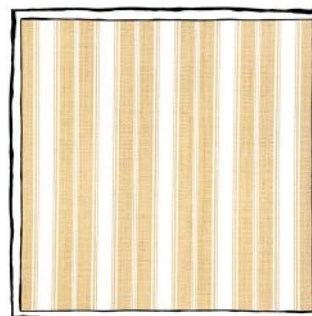
WALLPAPER

Content: 100% Paperweave



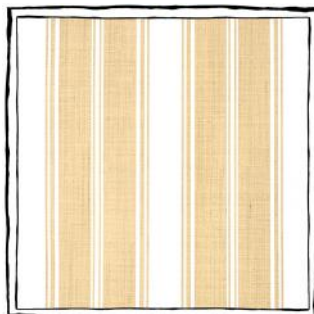
Animal Kingdom

*Repeat: 33" H x 50 $\frac{3}{4}$ " V
Width: 33"*



Branca Stripe Small

*Repeat: 4 $\frac{1}{5}$ " H
Width: 33 $\frac{3}{5}$ "*



Branca Stripe Medium

*Repeat: 11 $\frac{1}{5}$ " H
Width: 33 $\frac{1}{2}$ "*



Damasco

*Repeat: 16 $\frac{1}{2}$ " H x 16 $\frac{2}{5}$ " V
Width: 33"*



Foglia

*Repeat: 33 $\frac{1}{10}$ " H x 45 $\frac{1}{8}$ " V
Width: 33 $\frac{1}{10}$ "*



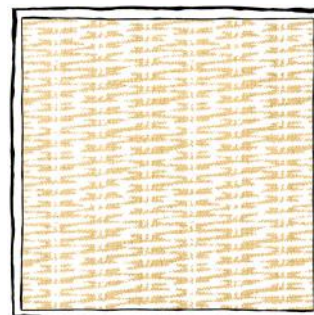
Papavero

*Repeat: 5 $\frac{7}{16}$ " H x 11" V
Width: 32 $\frac{9}{10}$ "*



Udaipur

*Repeat: 8 $\frac{1}{4}$ " H x 8 $\frac{4}{5}$ " V
Width: 33"*



Vimini

*Repeat: 5 $\frac{11}{16}$ " H x 6 $\frac{7}{10}$ " V
Width: 33 $\frac{3}{5}$ "*





• casa
BRANCA

• casa
BRANCA

Papavero

WALLPAPER

Repeat: 6½" H x 13" V

Width: 26"

Content: 100% Paper



Sky & Celery



Coral & Celery



Saffron & Natural



Coral & Celery



Off-White & Celery

Pavilion

PRINTED FABRIC

Repeat: 26" H x 25³/₈" V

Width: 52"

Content: 100% Linen

Pavilion is a lively, toile-like design inspired by an 18th-century Italian panel. It features a figural scene with architectural details, set upon a background of our Quadrato pattern.



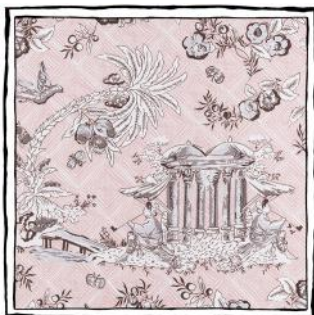
Natural & Espresso



Toast & Espresso



Toast & Coral



Powder & Espresso



Celery & Nero



Sky & Navy



Quadrato

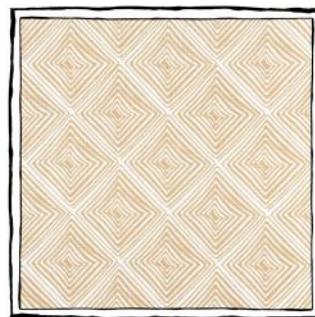
PRINTED FABRIC

Repeat: 27/8" H x 27/8" V

Width: 51"

Content: 100% Linen

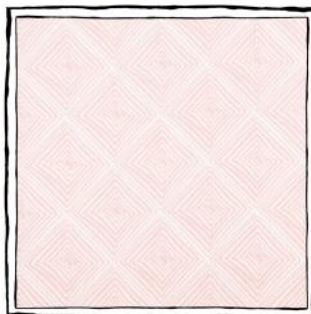
Its hand-drawn lines soften this concentric square design, rendering it with a wonderful neutral quality. Comfortable on any surface of a room or as an accent, Quadrato forms the background of our playful Pavilion print.



Toast



Sable



Powder



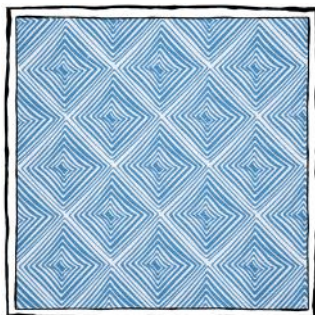
Cerise



Celery



Sky



French

Rosa Rigata

PRINTED FABRIC

Repeat: 6½" H x 14⅝" V

Width: 52"

Content: 100% Linen

Bold stripes balance a delicate Indian rose to create a soothing design.



Toast & Cerise



Toast & Sable



Sable & Cerise



French & Coral



Navy & French



Nero & Coral





Udaipur

PRINTED FABRIC

Repeat: 8⁵/₈" H x 9¹/₄" V

Width: 52"

Content: 100% Linen



Toast & Shell



Saffron & Toast



Toast & Natural



Saffron & Toast



French & Sky

Udaipur

PERFORMANCE FABRIC

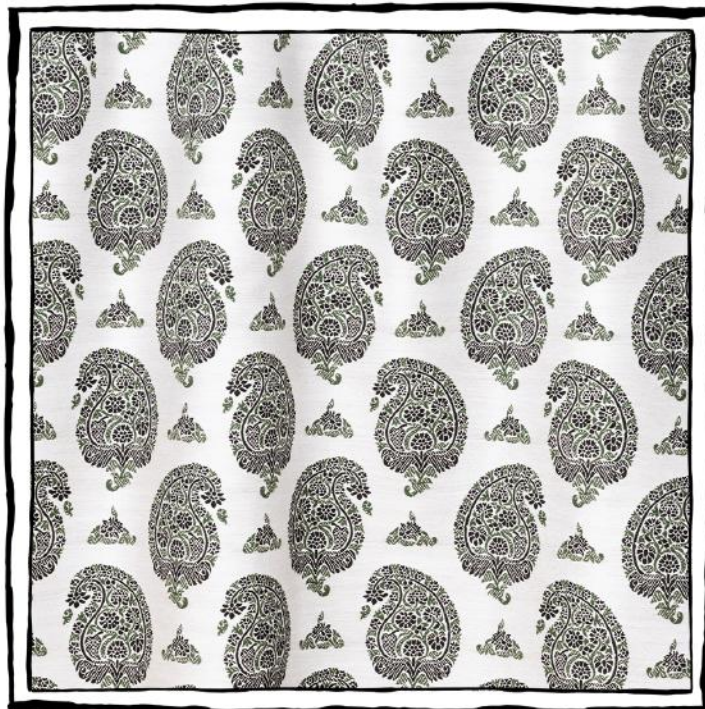
Repeat: 9 $\frac{7}{16}$ " H x 10 $\frac{4}{5}$ " V

Width: 55"

Content: Solution-Dyed Acrylic



Latte & Mushroom



Moss & Nero



Ivory & Sky



Moss & Nero



Portuguese & Sky





Vimini

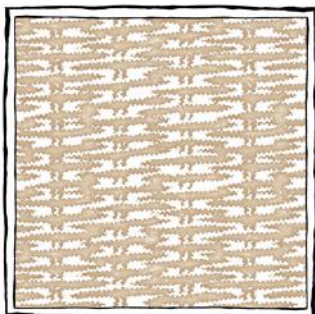
PRINTED FABRIC

Repeat: 5 $\frac{3}{16}$ " H x 6 $\frac{3}{16}$ " V

Width: 51 $\frac{1}{2}$ "

Content: 100% Linen

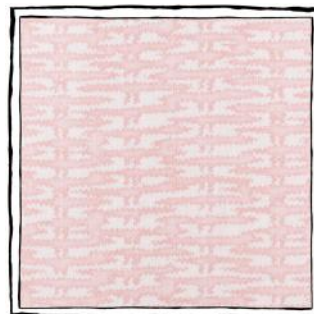
Vimini, or “Wicker” in Italian, is a visual pun on one of our favorite techniques. Organic and undulating in its three-dimensional form, it takes on a graphic quality when applied as a print. Mix it with a floral, or stage it as the backdrop for an otherwise clean and simple interior.



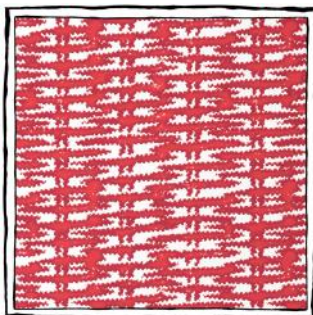
Toast



Sable



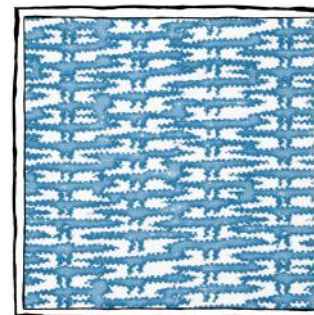
Powder



Imperial



Sky



French

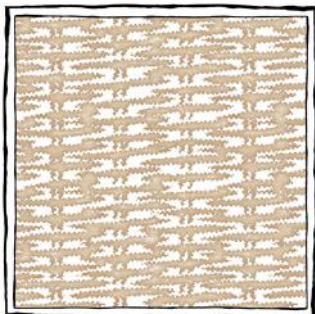
Vimini

WALLPAPER

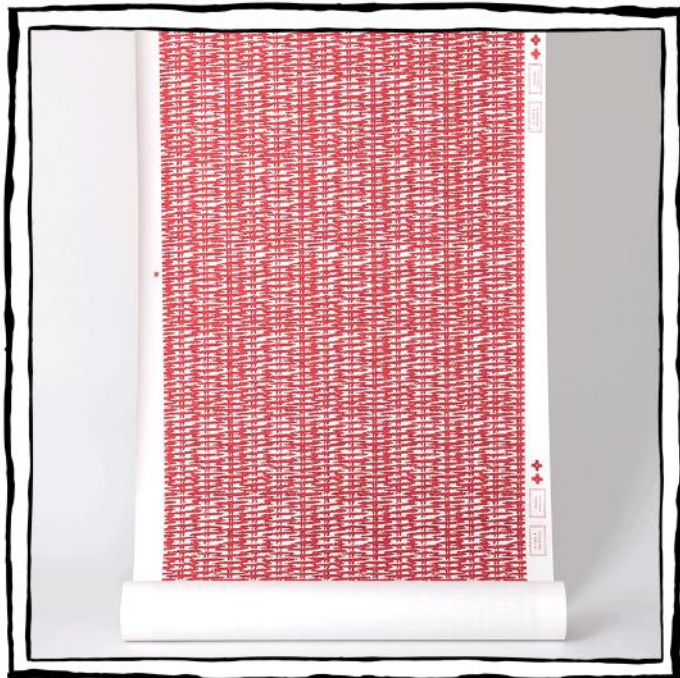
Repeat: $5\frac{3}{16}"$ H x $6\frac{3}{16}"$ V

Width: 26"

Content: 100% Paper



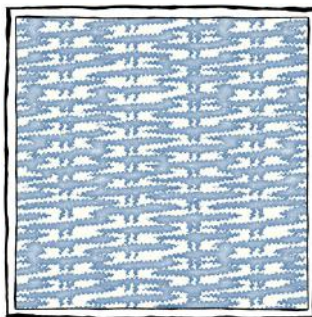
Toast



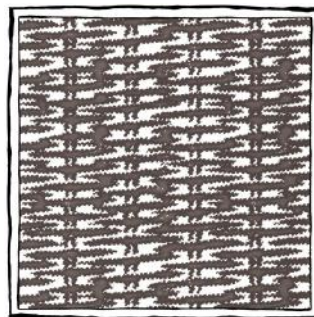
Coral



Sable



Portuguese



Pewter





Zig Zag

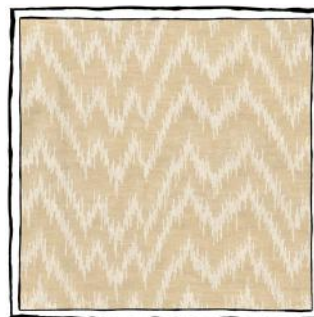
REVERSIBLE WOVEN FABRIC

Repeat: 7 $\frac{1}{10}$ " H x 7 $\frac{1}{2}$ " V

Width: 58"

Content: 100% Linen

Zig Zag introduces a modern look to the centuries-old flame stitch embroidery design it takes inspiration from.



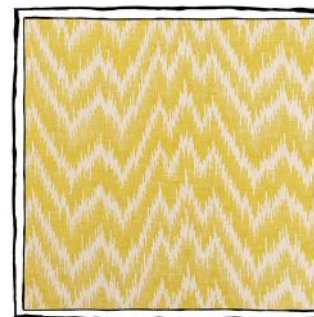
Nudo



Cerise



Pom



Roman



Sky



Indigo



Bruno



CASABRANCA.COM