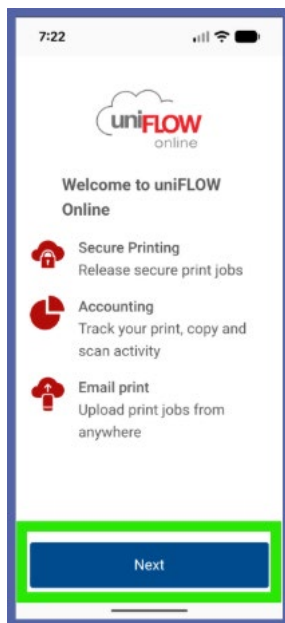


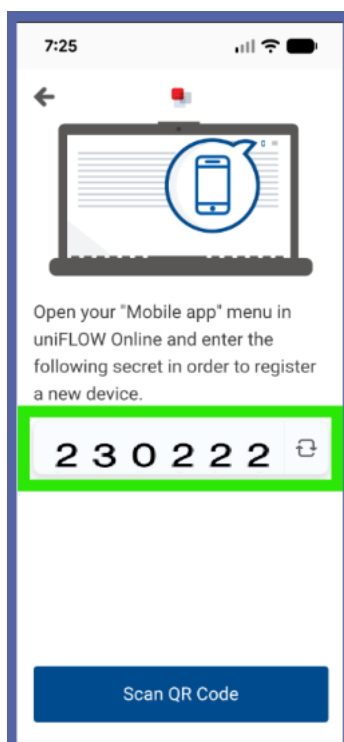
## How to Print from a Mobile Phone or Tablet

Install the uniflow Online Print & Scan app from the App Store/Google Play.

Open the app and click **Next**.



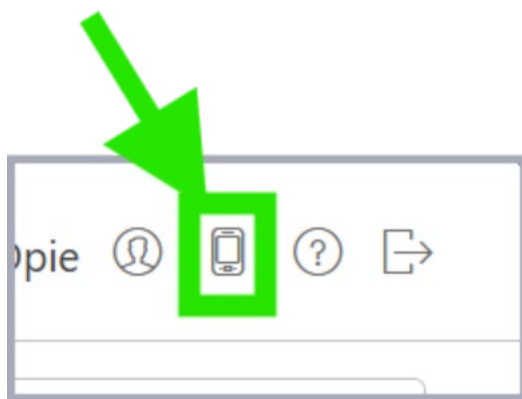
Your secret 6-digit code will be displayed on the next screen.



On your computer, go to <https://cornwallcollege.uk.uniflowonline.com/>.

Click Single Sign On.

Click the mobile app link in the top right corner.

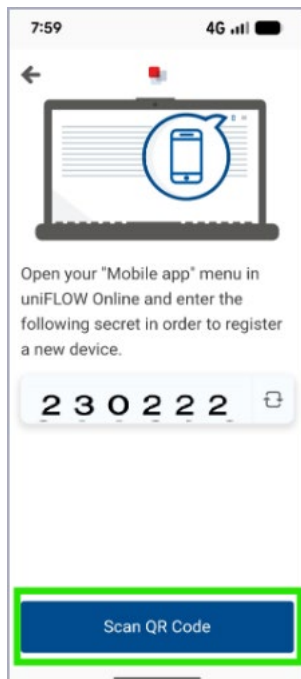


Enter your secret 6-digit code and click **Next**.

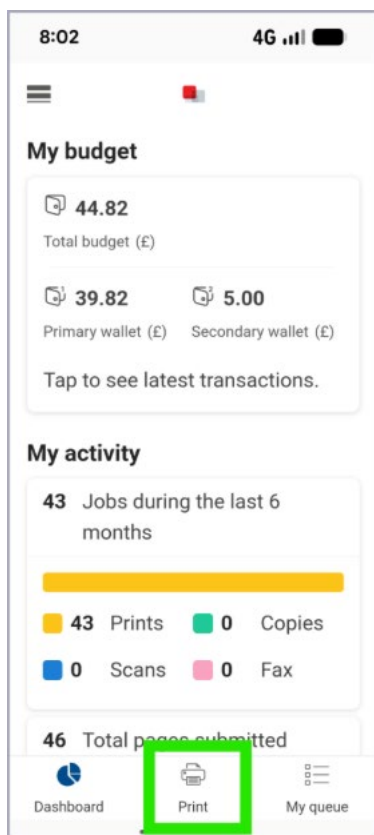
The image shows a screenshot of the 'CONNECT DEVICE' screen in uniFLOW Online. The screen displays instructions: 'To connect your phone to uniFLOW Online, download the app "uniFLOW Online Print & Scan" from the app store for your phone. Once installed, open the app and enter the displayed secret code.' Below the instructions are buttons for 'Download on the App Store' and 'GET IT ON Google Play'. A text input field labeled 'Secret \*' is highlighted with a green box, with a note below it: '6 digit secret code as shown on the mobile app login screen.' At the bottom of the screen are 'Cancel' and 'Next' buttons.

A QR code will appear on the next screen.

On your mobile device, click **Scan QR Code**.

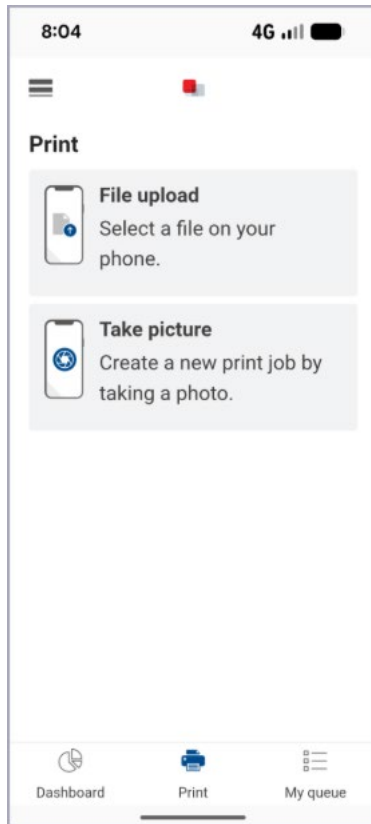


The uniFlow app will open on your mobile device.



The **Dashboard** screen shows your available credit and print\copy history.

Click **Print** and choose **File upload** or **Take a picture**.



Note: Your print job will remain in the queue for 3 days.

Supported Files:

- Portable Document Format (.pdf)
- Web Pages (.htm, .html)
- Text File (.txt, .text, .csv)
- XML Files (.xml)
- Rich Text Format (.rtf)
- Microsoft® Excel Files (.xlsx, .xlsm, .xlsb, .xltx, .xltm, .xls, .xlt, .xlm, .xlw)
- Microsoft® Word Documents (.docx, .doc, .docm, .dotx, .dotm, .dot)
- Microsoft® PowerPoint Presentations (.pptx, .ppt, .pptm, .ppsx, .pps, .ppsm, .potx, .potm)
- WordPerfect® Documents (.wpd)
- Bitmap Image File (.bmp)
- CompuServe Graphics Interchange Format (.gif)

- Icon Files (.ico)
- JPEG 2000 JP2 File Format Syntax (.jp2)
- Joint Photographic Experts Group Image Format (.jpeg, .jpg)
- Portable Network Graphics (.png)
- Tagged Image File Format (.tiff, .tif)