

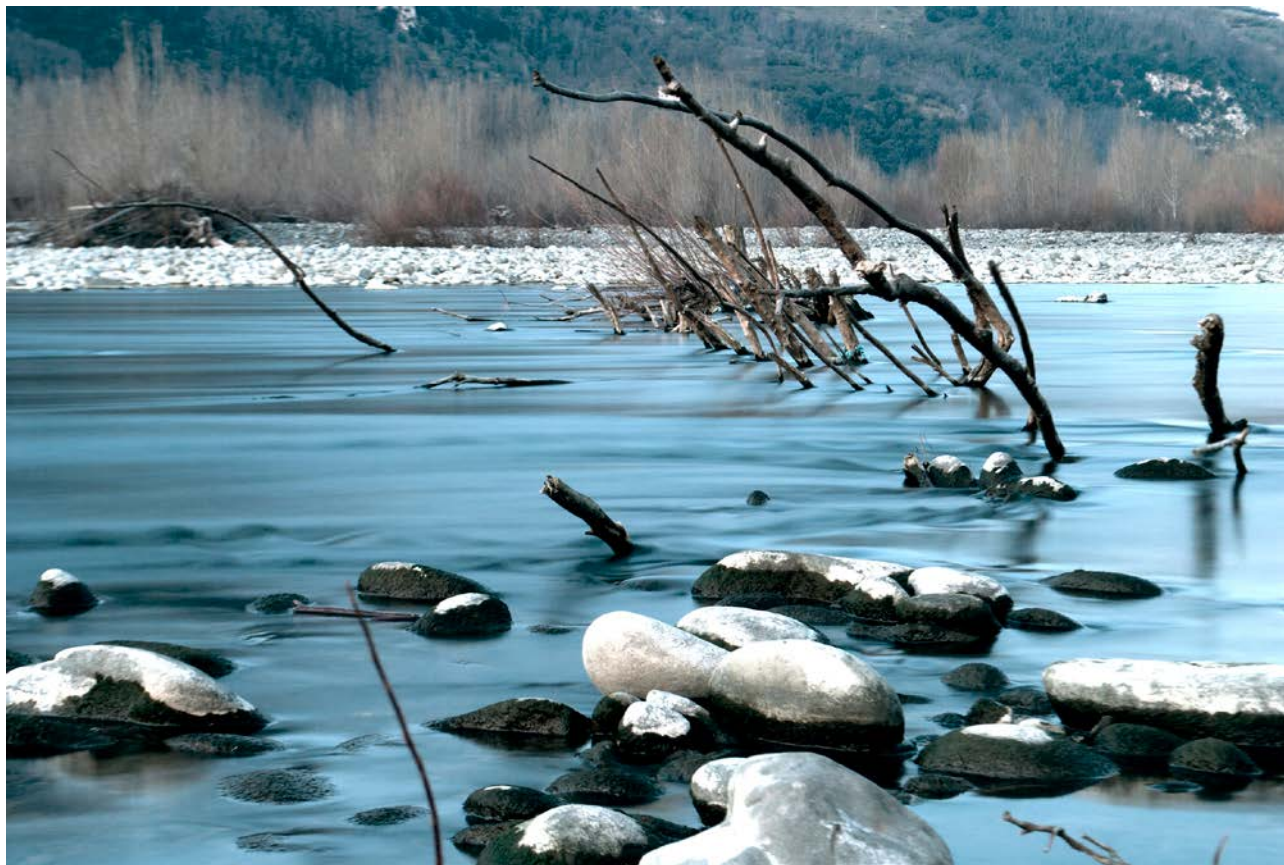
Jacob Lucius Cartwright

Photography

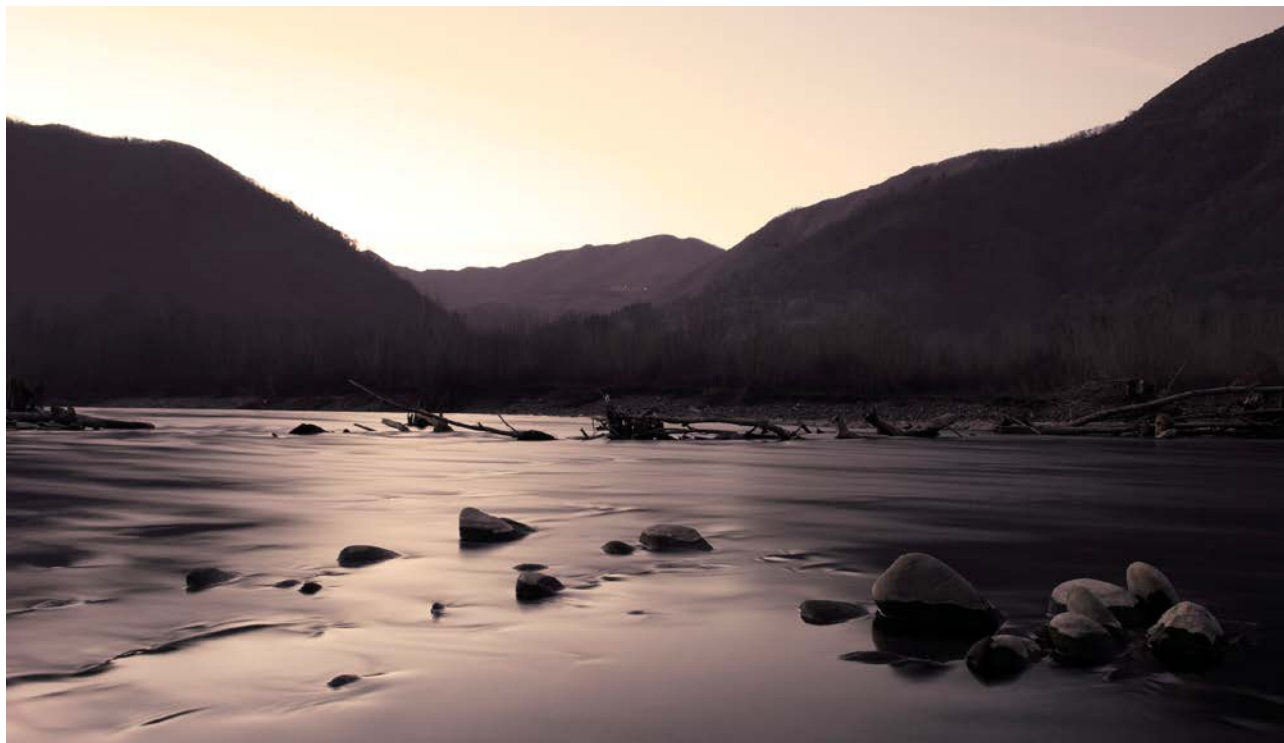
Series: Water
Riverlate 1



Riverlate 2



Riverlate 3



Riverlate 4



Riverlate 5



Riverlate 6



Series: Coalesce
Cat-Tail



Cat-Tail 3



Cat-Forest



Flocking



Gather 2



Coalesce



Envelope



Gather



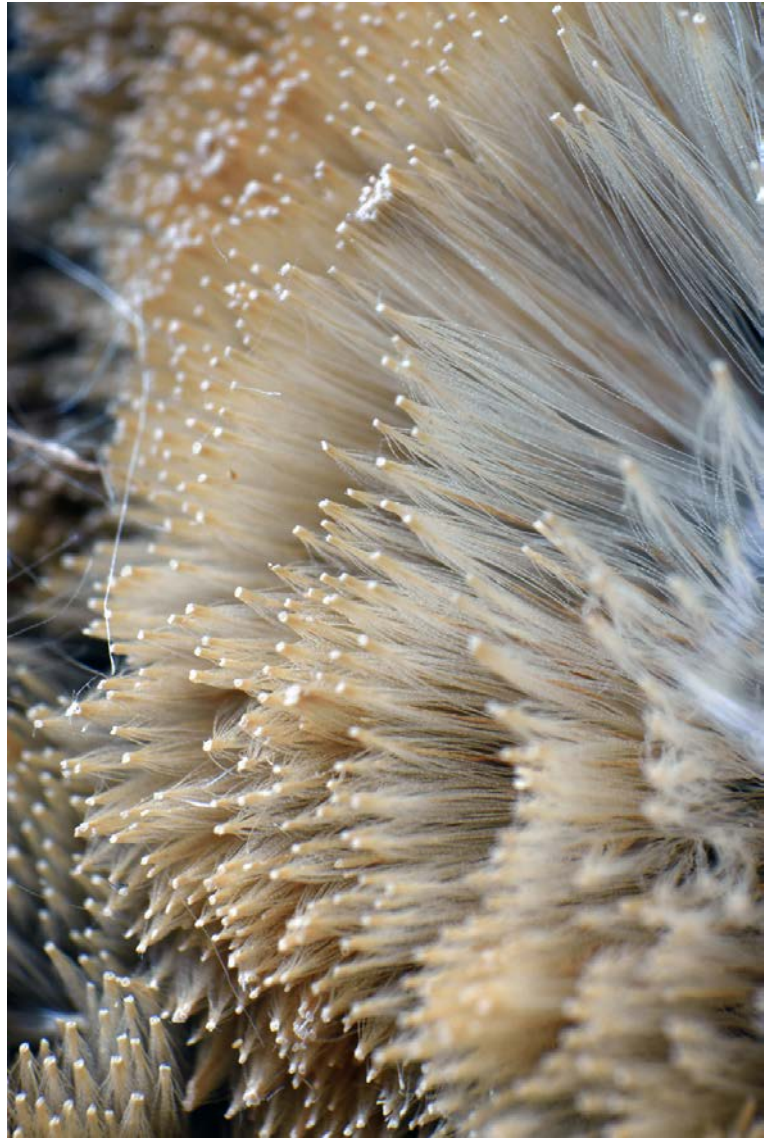
Immerse



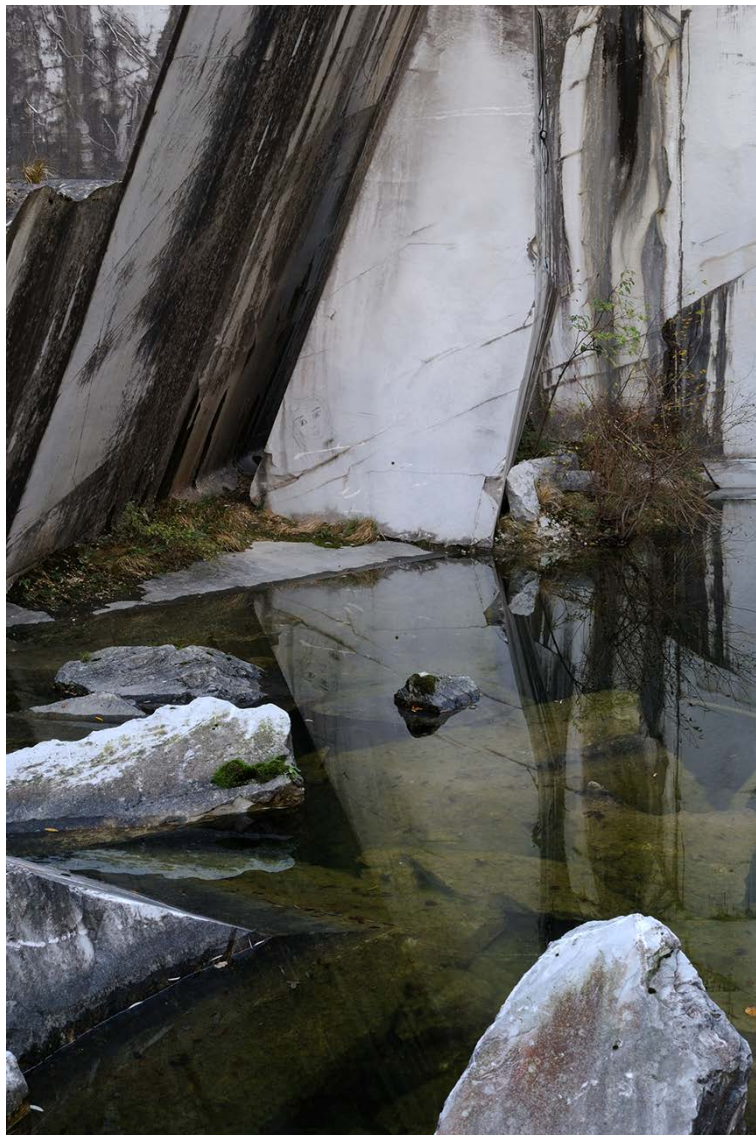
Press



Spread



Series: Reflections
Quarry Depths



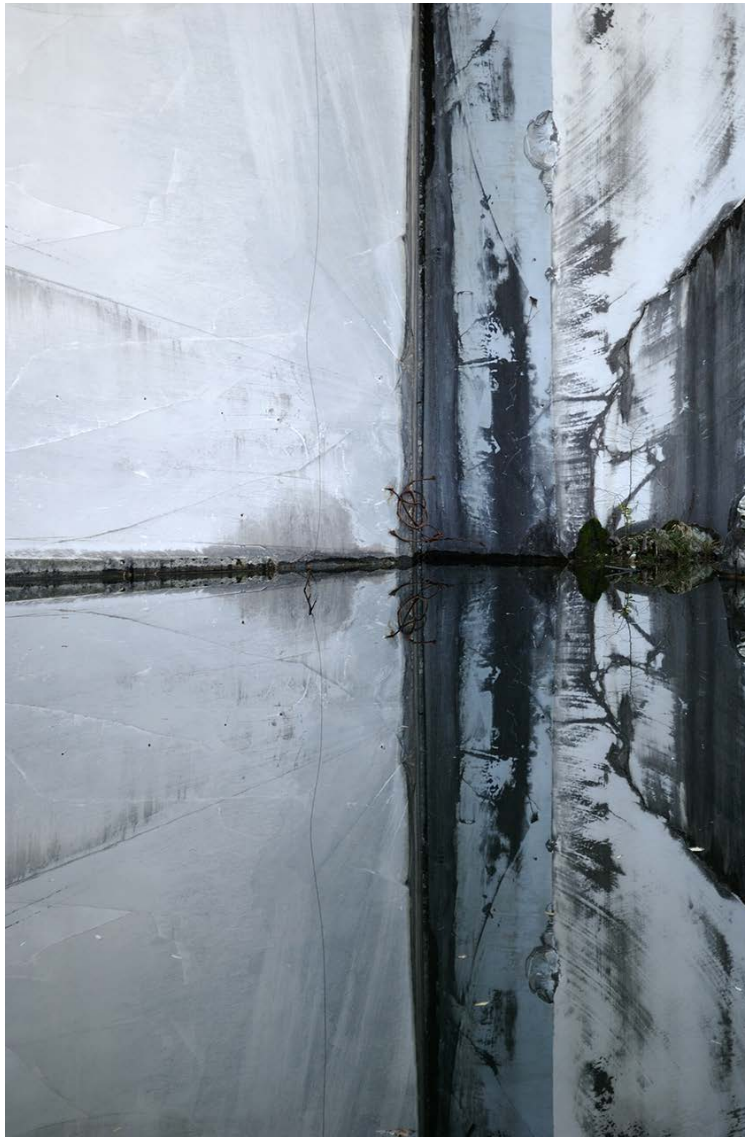
Quarry Reflection 1



Quarry Reflection 2



Quarry Reflection 3



Quarry Reflection 4



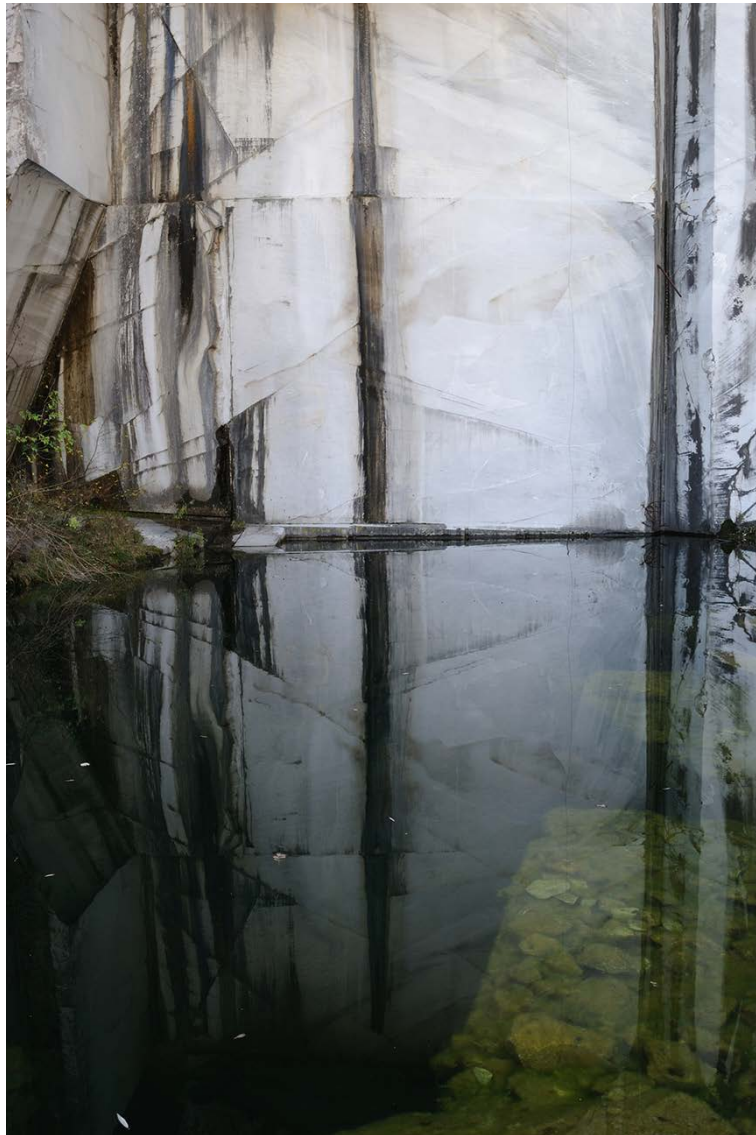
Quarry Reflection 7



Quarry Reflection 8



Quarry Reflection 9



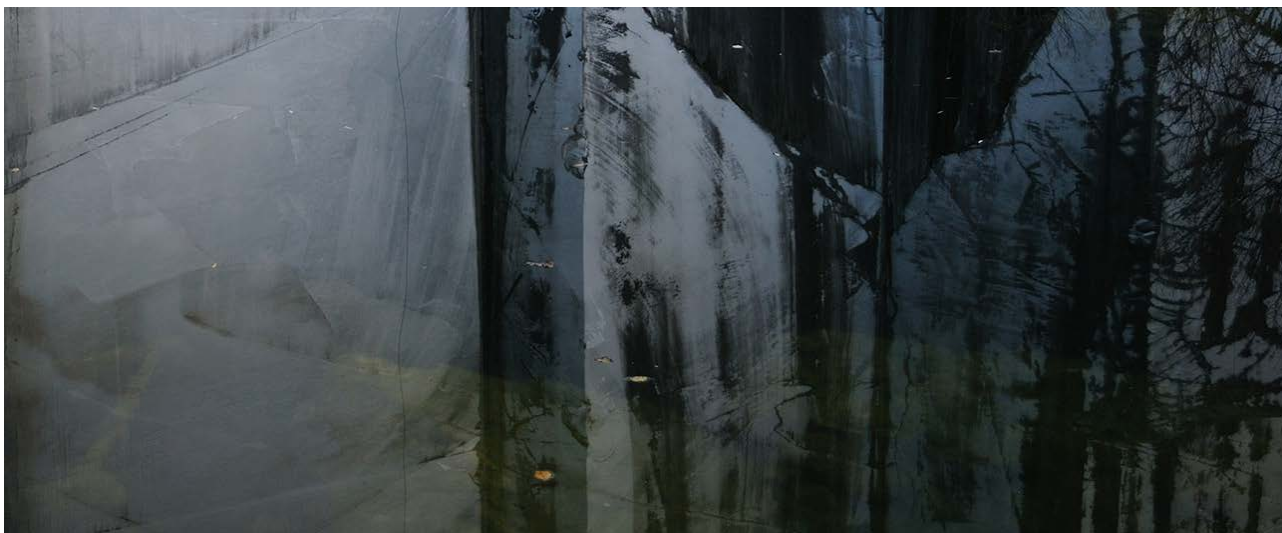
Quarry Wall 3



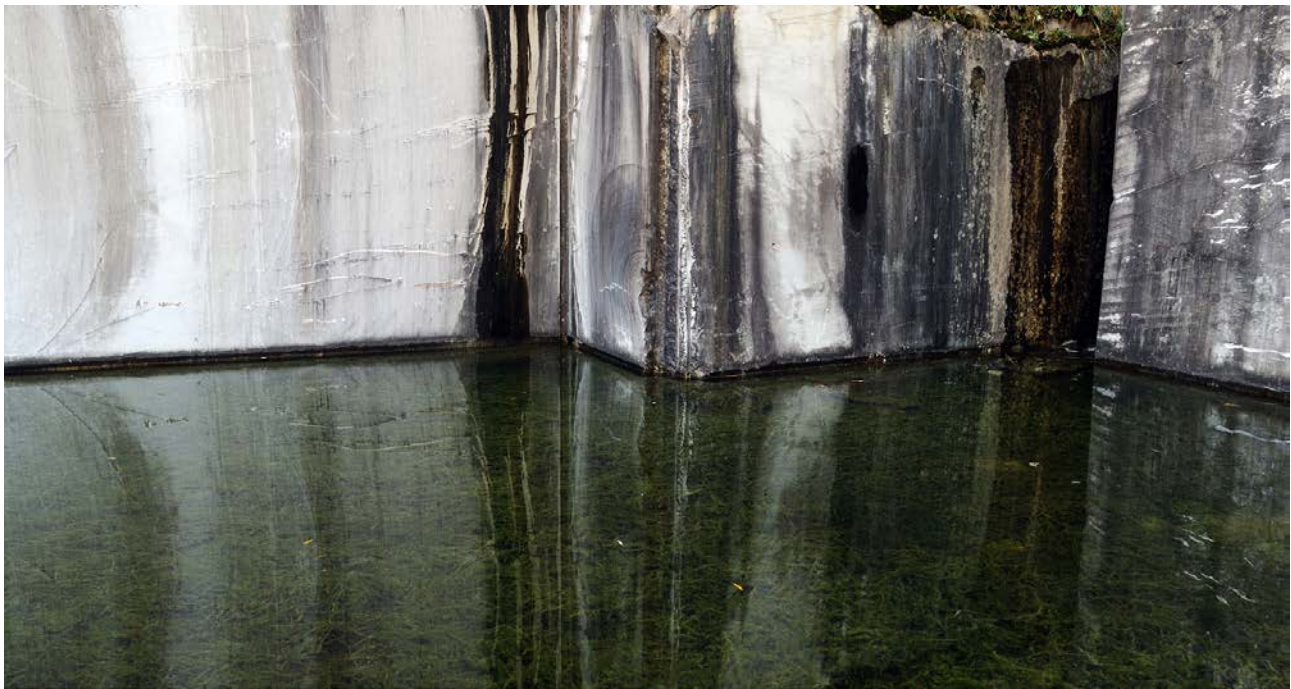
Lines



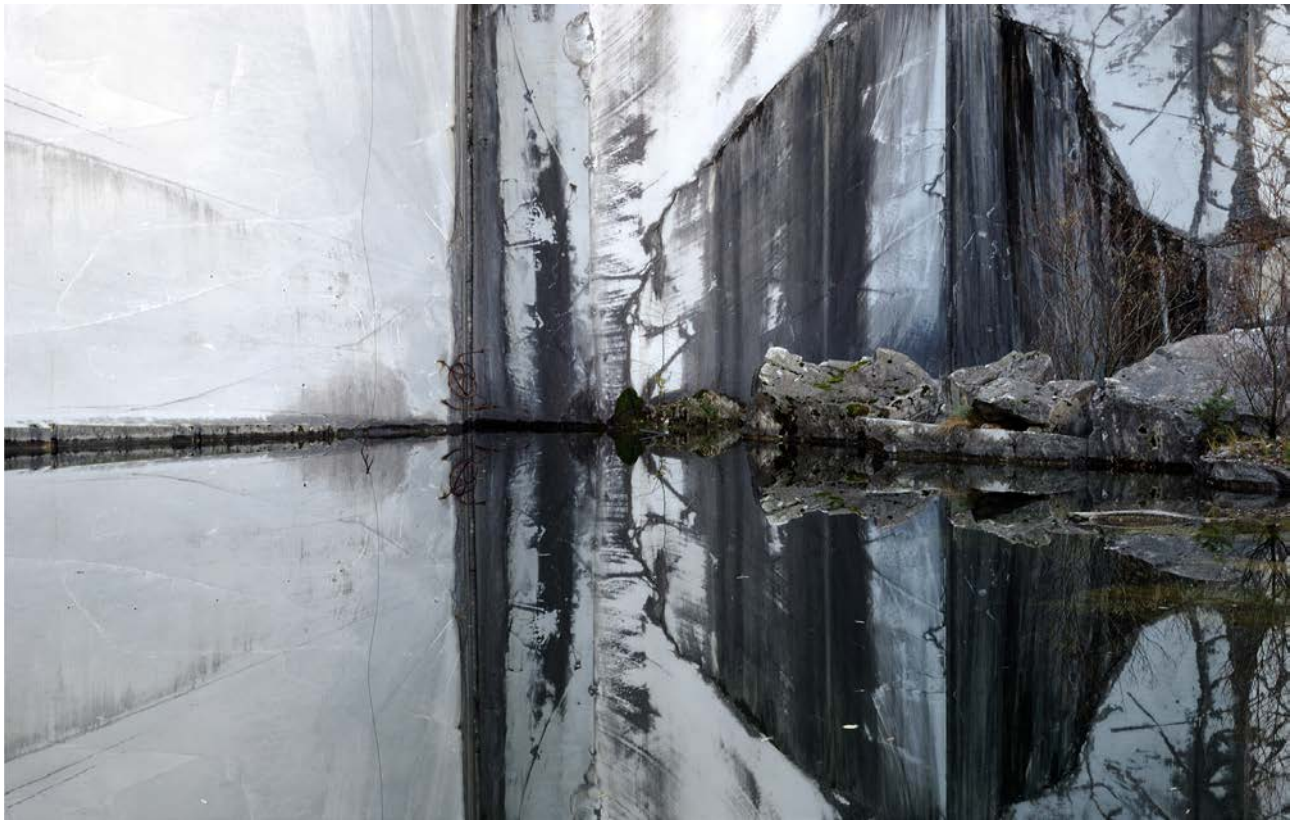
Quarry Pool



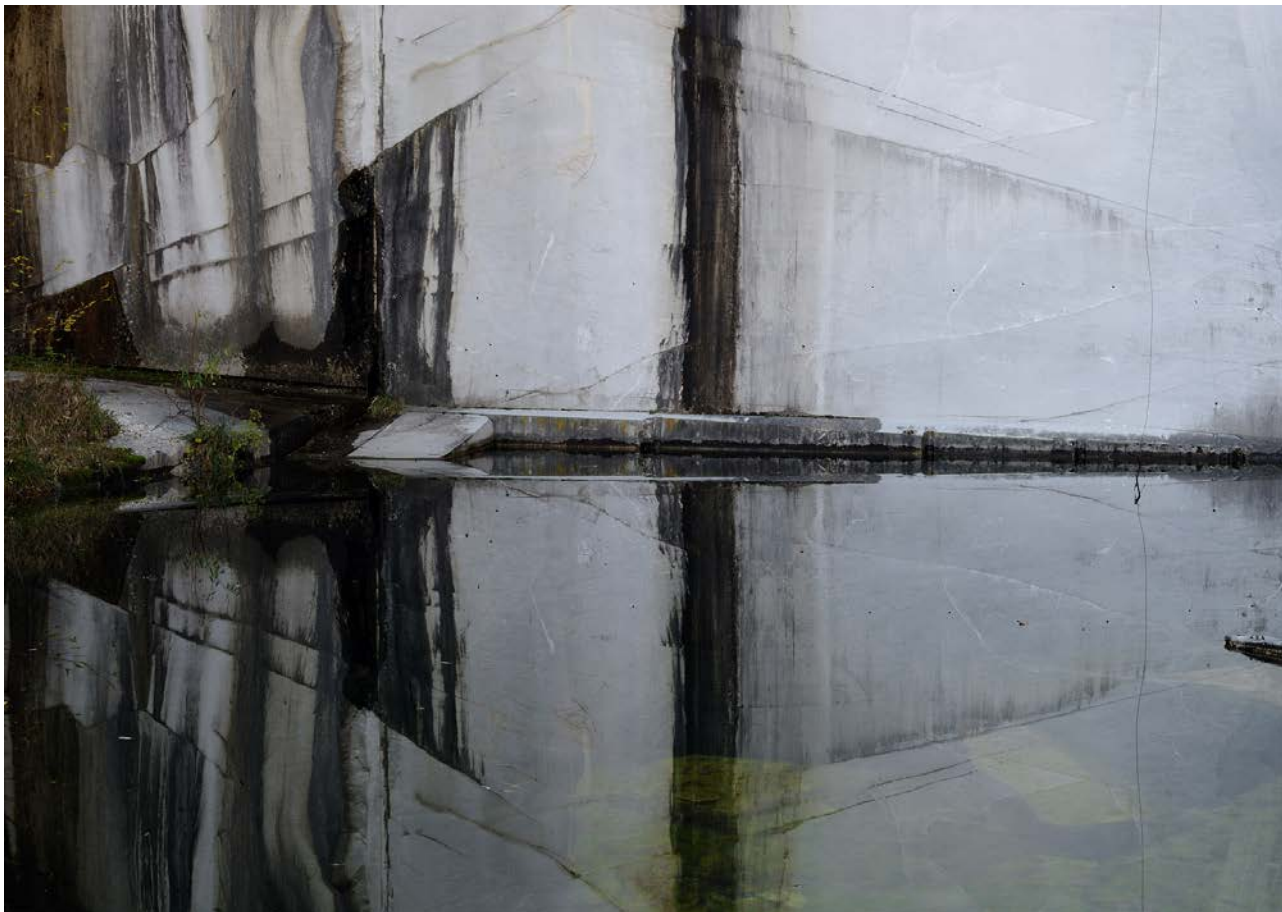
Quarry Reflection 5



Quarry Reflection 6



Quarry Reflection 10



Quarry Reflection II



Quarry Reflection 12



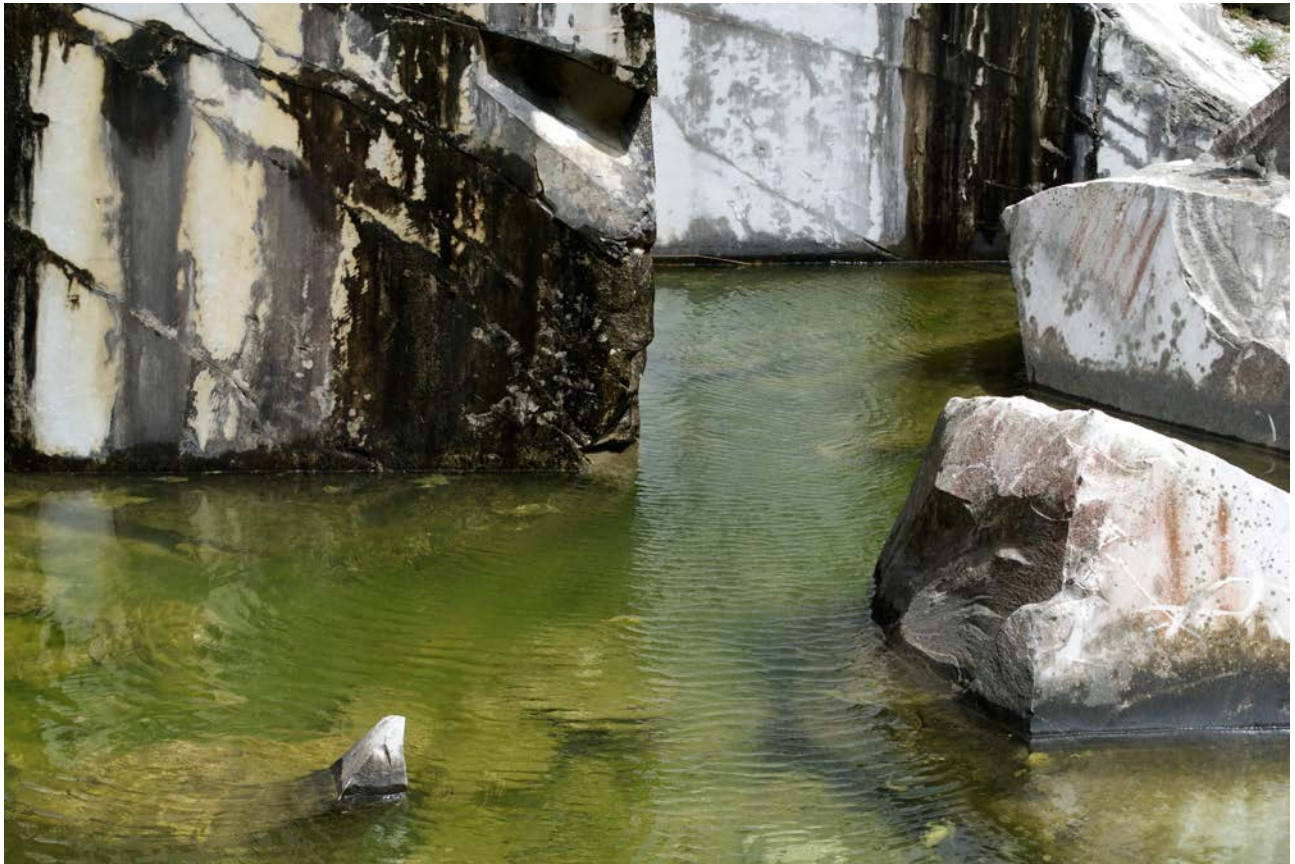
Quarry Wall 2



Quarry Wall 4

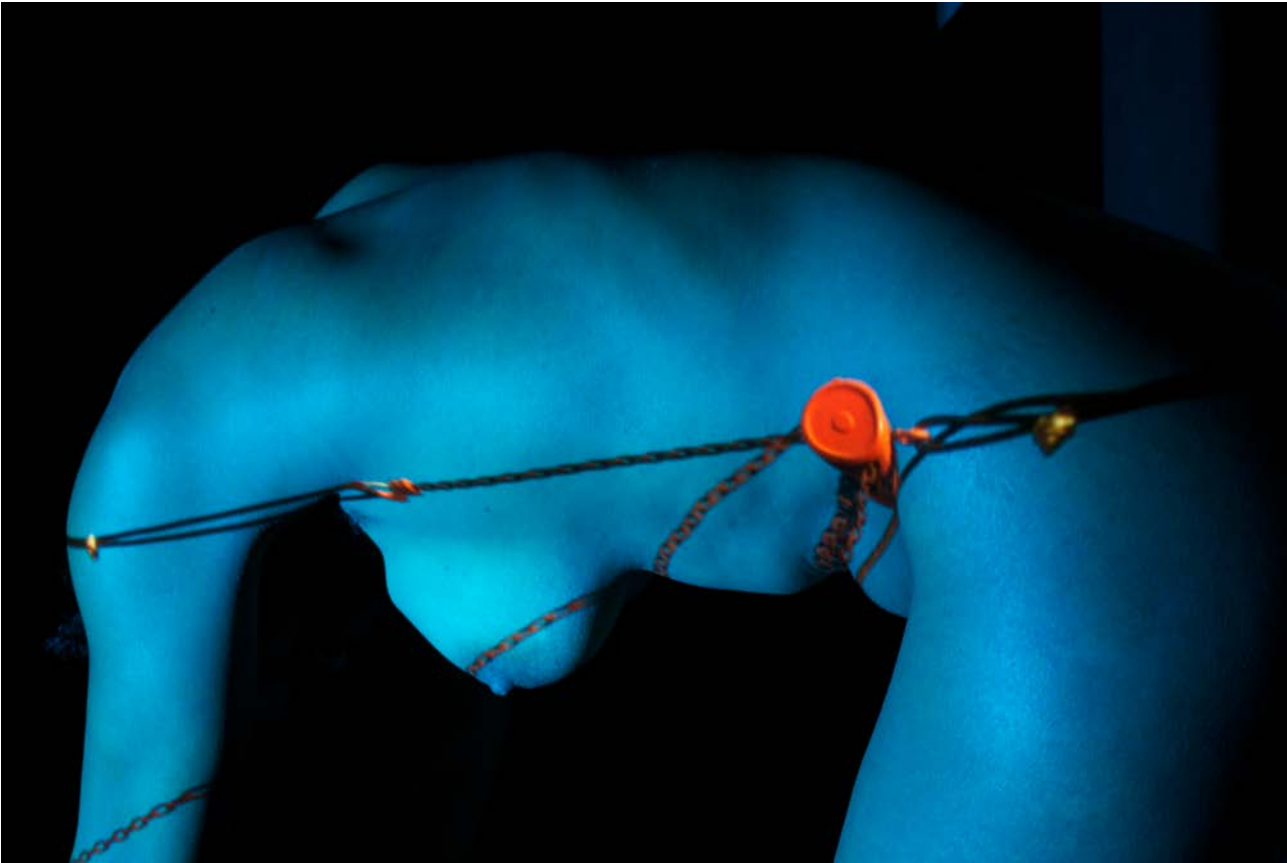


Wind in the Quarry

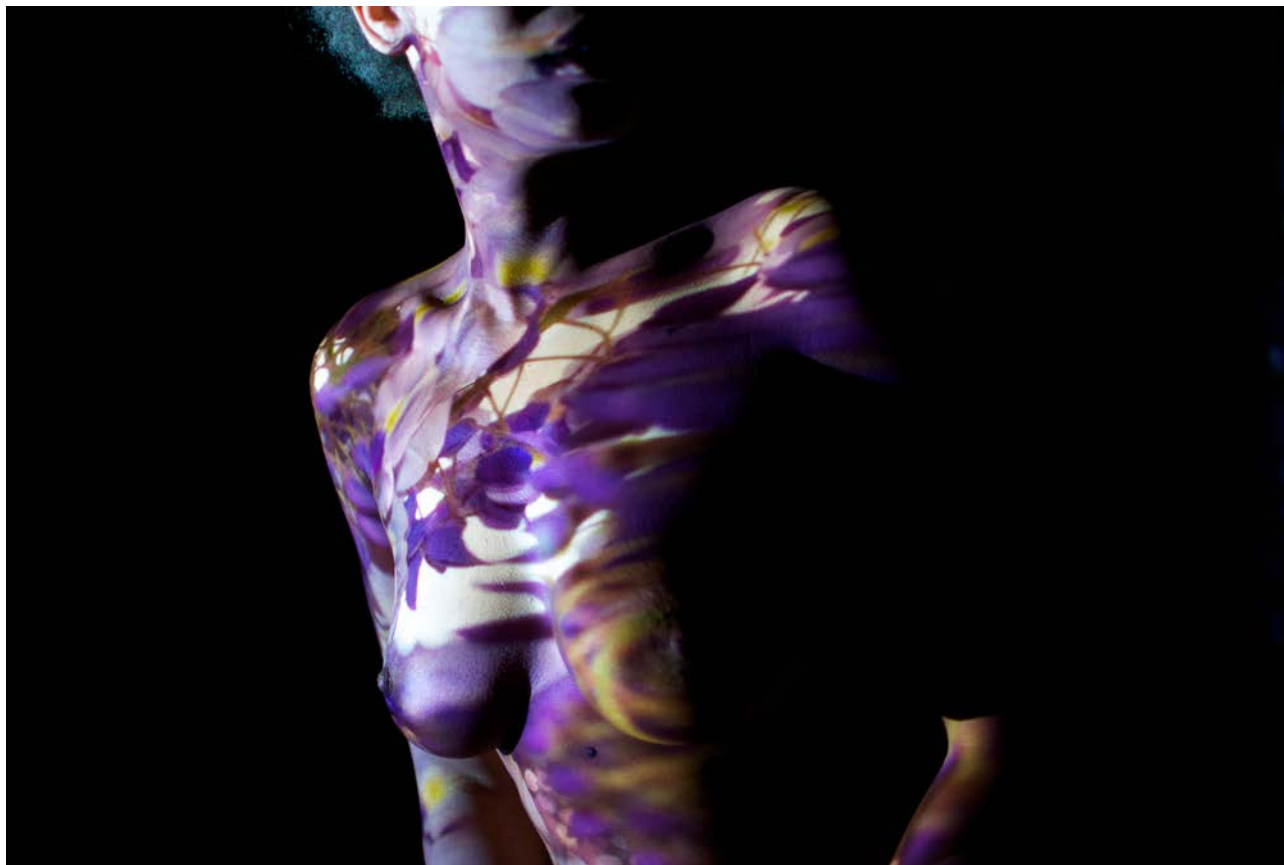


Series: Woman

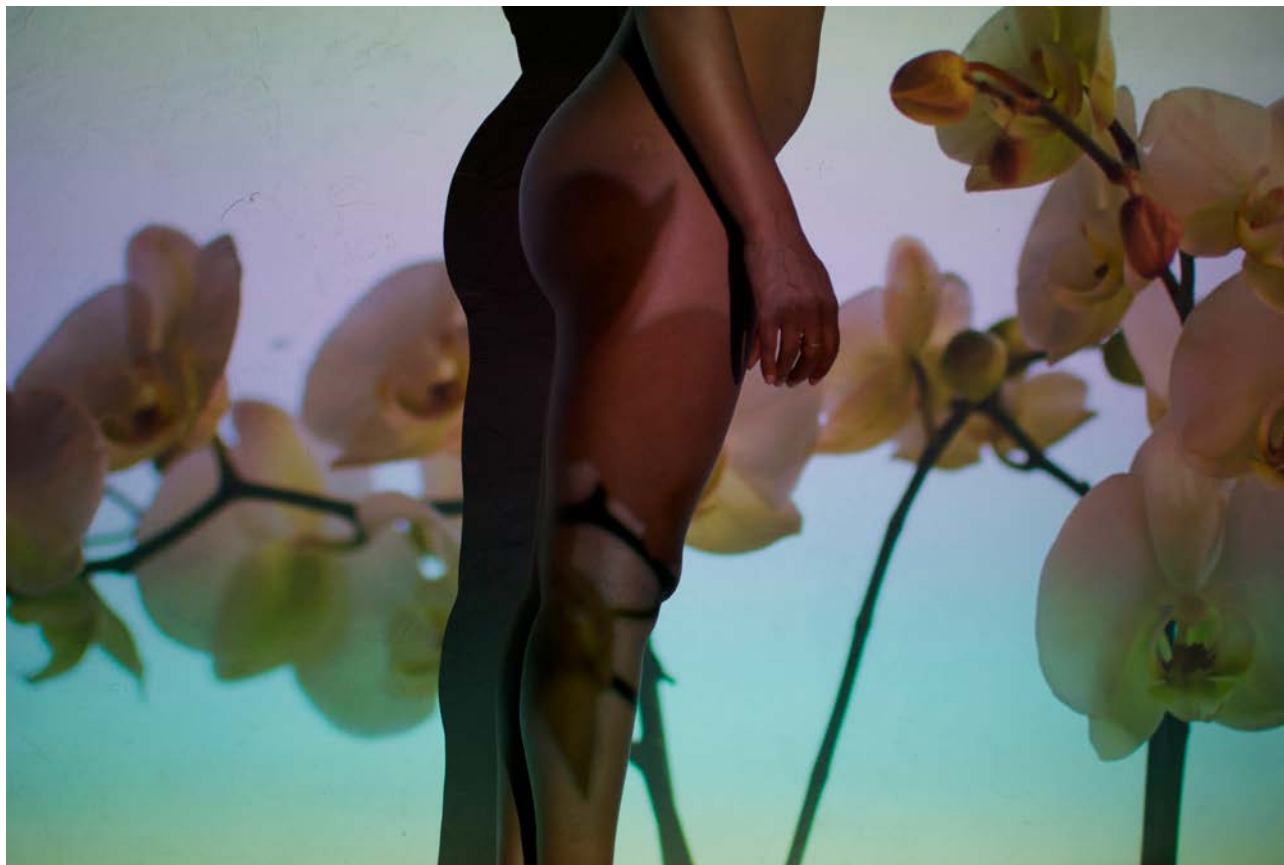
Blue



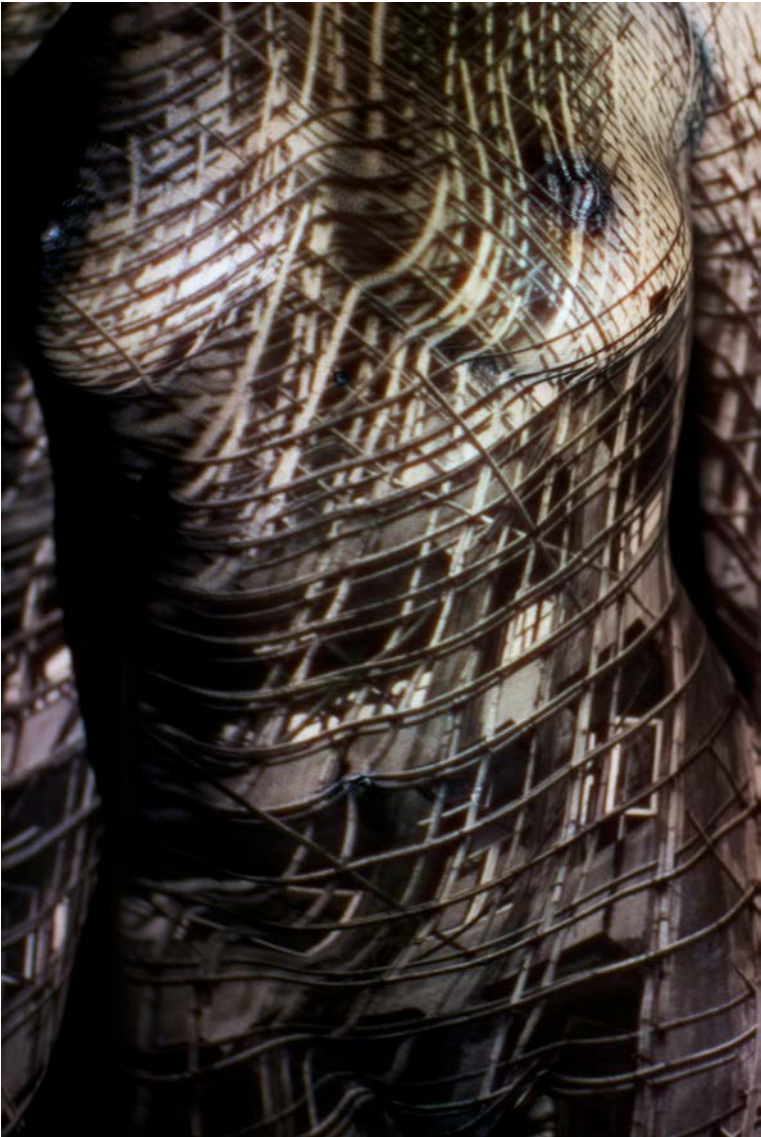
Earth



Flower



Bamboo



Construct



Red



Ribbon



Artist Bio

Jacob Lucius Cartwright was born in Ferntree Gully, Australia in 1982 and is of the 3rd generation of a family of artists. His unique training in art was an informal one but none the less permeated his daily life from an early age. On the other hand music and composition took on a more institutional aspect. At 12 he was accepted into the prestigious Victorian College of the Arts for secondary education studying music. He later studied on a full scholarship at the Interlochen Arts Academy in Michigan and then at 16 was accepted into the V.C.A. tertiary College for Music Composition. After many travels of both internal and external nature he slowly worked on the integration of resonance, form and the practice of listening. He can now be found in his studio's in Pietrasanta. Cartwright's approach to sculpture is made unique by his undeniable influence from the world of sound and resonance and in how the practice of listening brings him closer to his human nature and spirit. For him the direct act of creation - being present in the moment of discovery - is as important to him now when sculpting as it was improvising and subsequently composing music. He often interprets sound, frequency or resonance into form. His sound sculptures and installations are more conceptual and can be found in Bei Wu Art Foundation in Germany and his collaborative, site specific performance art has been presented in Lucca, Bagni di Lucca Art festival, Cartasia and InTeatro in Italy, Fabrik Potsdam in Germany and Saari Manor in Finland. He has been granted art residencies at the Saari Residence by Kone foundation in Finland, Mas des Graviers in France, Bei Wu Art Foundation in Germany and Villa Nappi in Italy.

His sculpture has been exhibited at the Hong Kong Visual Arts centre, The Art Walk in Tonfano, Tuscany, Paola Raffo Arte Contemporanea in Pietrasanta, Italy, La Rondine Gallery in Italy and Hong Kong, Leonida Estate in Tuscany, Biennale di Soncino in Cremona, Barcelona SWAB art fair, Axes Collective in Brussels, La Polveriera in Pietrasanta and Australia House in London. His works are in private collections in America, England, Germany, Switzerland, India, Norway, Hong Kong, Italy, Japan and Australia.

Jacob Lucius Cartwright è nato a Ferntree Gully, Australia nel 1982 ed è della terza generazione di una famiglia di artisti. La sua formazione artistica, unica nel suo genere, è stata informale, ma ha comunque permeato la sua vita quotidiana fin dalla più tenera età. D'altra parte la musica e la composizione hanno assunto un aspetto più istituzionale. A 12 anni fu accettato nel prestigioso Victorian College of the Arts per l'istruzione secondaria studiando musica. In seguito studiò con una borsa di studio completa all'Interlochen Arts Academy nel Michigan e poi a 16 anni fu accettato nel College terziario V.C.A. per la composizione musicale. Dopo molti viaggi di natura interna ed esterna ha lentamente lavorato sull'integrazione della risonanza, della forma e della pratica dell'ascolto. Ora può essere trovato nel suo studio a Pietrasanta. L'approccio di Cartwright alla scultura è reso unico dalla sua innegabile influenza dal mondo del suono e della risonanza e da come la pratica dell'ascolto lo avvicina alla sua natura umana e allo spirito. Per lui l'atto diretto della creazione - essere presente nel momento della scoperta - è tanto importante ora quando scolpisce quanto lo era improvvisare e successivamente comporre musica. Spesso interpreta il suono, la frequenza o la risonanza in forma. Le sue sculture sonore e le sue installazioni sono più concettuali e si possono trovare alla Bei Wu Art Foundation in Germania e la sua performance art collaborativa e site specific è stata presentata a Lucca, Bagni di Lucca Art festival, Cartasia e InTeatro in Italia, Fabrik Potsdam in Germania e Saari Manor in Finlandia. Gli sono state concesse residenze d'arte al Saari Residence dalla fondazione Kone in Finlandia, Mas des Graviers in Francia, Bei Wu Art Foundation in Germania e Villa Nappi in Italia.

La sua scultura è stata esposta all'Hong Kong Visual Arts centre, La Via della Arte in Tonfano, Tuscany, Paola Raffo Arte Contemporanea in Pietrasanta, Italy, La Rondine Gallery in Italia e a Hong Kong, Leonida Estate in Toscana, Biennale di Soncino a Cremona, Barcelona SWAB art fair, Axes Collective a Bruxelles, La Polveriera a Pietrasanta e Australia House a Londra. Le sue opere si trovano in collezioni private in America, Inghilterra, Germania, Svizzera, India, Norvegia, Hong Kong, Italia, Giappone e Australia.

For Contact

www.jacobcartwright.com

📷 @jacobcartwrightartist

5/2022

