



# BOLD



★★★★★  
**NAXOS**<sup>®</sup>  
CERAMICHE  
FINCIBEC GROUP

LIVING EMOTION  
MADE IN ITALY

## **LIVING EMOTION MADE IN ITALY**

As a perfect combination of research, creativity and design, NAXOS wall tiles aim to satisfy the most sophisticated trends in interior décor. The colour, structure and depth of NAXOS tiles are the result of continuous aesthetic testing and the application of state-of-the-art ceramic technologies to respond to the idioms of modern living.

## **EMOZIONE DA VIVERE MADE IN ITALY**

NAXOS rappresenta il perfetto connubio tra ricerca, creatività e design, con l'obiettivo di proporre ceramica a rivestimento capace di soddisfare le più raffinate tendenze d'arredo. Colore, struttura e profondità dei rivestimenti NAXOS sono il frutto di una continua sperimentazione estetica, unita all'applicazione delle più innovative tecnologie ceramiche per dare risposte ai moderni linguaggi dell'abitare.

★★★★★  
**NAXOS**<sup>®</sup>  
C E R A M I C H E  
FINCIBEC GROUP

# BOLD

---

## INDEX / 60x120

P. 10 **BEDROOM**  
Supreme / Hero



P.16 **OPEN SPACE**  
Hero / Idol / Concert



P.22 **WINE BAR**  
Solar / Lively



P.28 **BATHROOM**  
Silvery / Fire / Concert



P.34 **LIVING**  
Dynamic / Beat



P.40 **SHOP**  
Dynamic / Concert beige



P.46 **MASTER BATHROOM**  
Dynamic / Concert beige



## INDEX / 30x60

P. 62 **BATHROOM**  
Hero Silk



P. 66 **BATHROOM**  
Dynamic Silk / Beat Silk / Fairy Beige



P. 70 **BATHROOM**  
Hero Silk / Fairy Grey



P. 74 **BATHROOM**  
Supreme Silk / Dynamic Silk





IT DOES  
NOT BURN  
**NON BRUCIA**

ENVIRONMENT  
FRIENDLY  
**AMA  
L'AMBIENTE**

SAFE  
**SICURO**

HYGIENIC  
**IGIENICO**

LONG  
LASTING  
**DURA  
A LUNGO**

VERSATILE  
**VERSATILE**

RESISTANT  
**RESISTENTE**

STABLE  
**STABILE**

Questa comunicazione è realizzata in partnership con  
This communication is done in partnership with

**ceramica** ■ info

[www.ceramica.info](http://www.ceramica.info)





# FINE PORCELAIN STONEWARE. A SAFE CHOICE

## IL GRES PORCELLANATO. UNA SCELTA SICURA

FINE PORCELAIN STONEWARE IS CREATED OUT OF A BLEND OF TOP-QUALITY RAW MATERIALS, APPROPRIATELY PROCESSED AND FIRED AT A TEMPERATURE TILL 1250°C TO GUARANTEE COMPLETE VITRIFICATION.

PORCELAIN STONEWARE PRODUCTS OFFER OUTSTANDING HARDNESS, RESISTANCE, COMPACTNESS, NON-ABSORBENCY AND FROST-PROOFING, MAKING THEM UNIQUELY HIGH-PERFORMING MATERIALS FOR USE IN ARCHITECTURE IN A GREAT VARIETY OF DIFFERENT CONTEXTS.

**IL GRES FINE PORCELLANATO NASCE DA UN MIX DI MATERIE PRIME PREGIATE, OPPORTUNAMENTE LAVORATE E SOTTOPOSTE A COTTURA A UNA TEMPERATURA FINO A 1250°C CHE NE GARANTISCE LA PERFETTA GREIFICAZIONE.**

**I PRODOTTI IN GRES PORCELLANATO PRESENTANO CARATTERISTICHE DI ECCEZIONALE DUREZZA, RESISTENZA, COMPATTEZZA, INASSORBENZA E INGELIVITÀ CHE LI RENDE INIMITABILI, PER PRESTAZIONI, NELL'IMPIEGO IN ARCHITETTURA NEI PIÙ SVARIATI AMBITI DI UTILIZZO.**

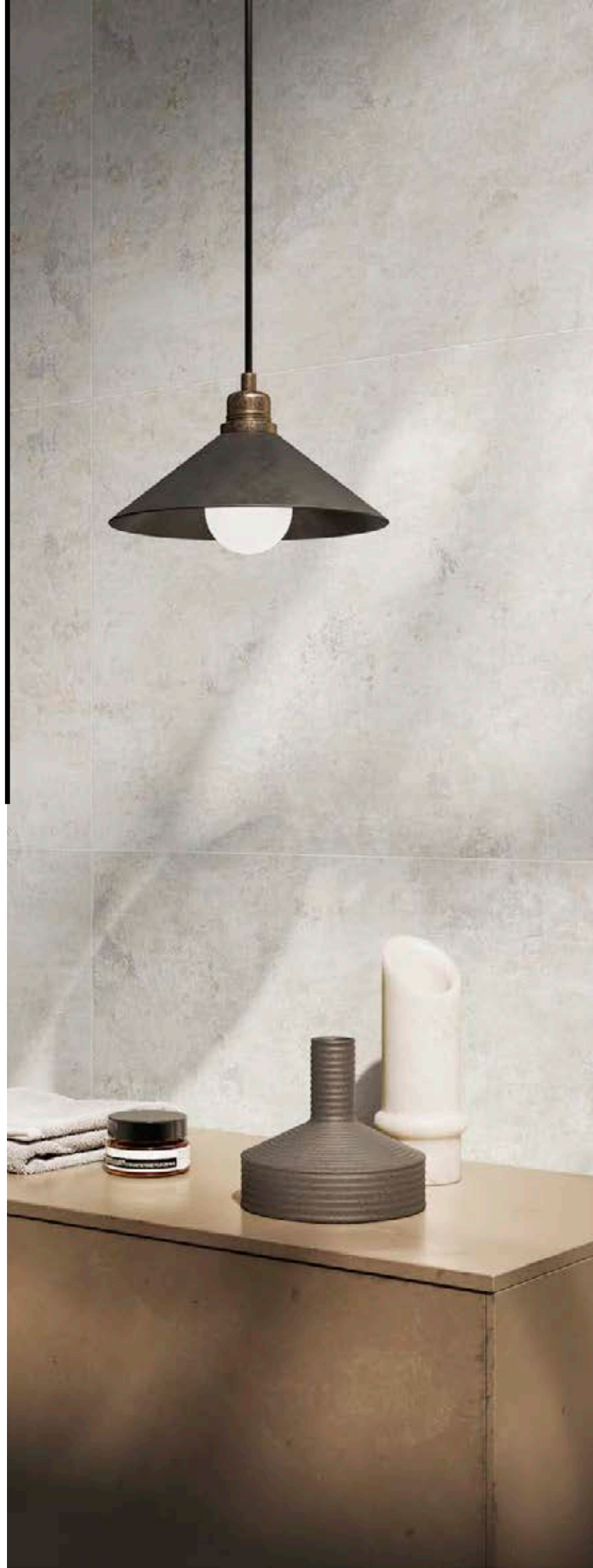


# BOLD

MATERIAL FOR  
CREATIVITY

A material for creativity, an original stylistic expression, the Bold collection elaborates the concept of textural effect through porcelain stoneware, originating an unprecedented texture, evocative in its chromatic declinations and iridescent reflections. Ceramic welcomes and enhances contemporary colours, a range of neutrals and bold tones to mix in contemporary interiors thanks to the versatility of the size and the exclusive mosaic decorations. The 7 mm thickness maintains the excellent technical performance of the surface, suitable for wall and floor installation.

**Materia per la creatività, espressione stilistica originale, la collezione Bold elabora il concetto di effetto materico attraverso il gres porcellanato per dare vita a una texture inedita, suggestiva nelle declinazioni cromatiche e nei riflessi cangianti. La ceramica accoglie e valorizza colori attuali, una gamma di neutri e di toni audaci da mescolare negli interni contemporanei attraverso la versatilità del formato e l'esclusività delle decorazioni a mosaico. Lo spessore 7 mm mantiene inalterate le prestazioni tecniche d'eccellenza della superficie che si presta alla posa in parete e a pavimento.**





## 7 MM PORCELAIN STONEWARE GRES PORCELLANATO 7 MM

Porcelain tile solutions with a thickness of 7 mm are an expression of the most innovative production technologies applied to the sector of ceramic tiling. Its reduced thickness maintains its extraordinary resistance, hygiene and maintenance of the material intact, with products that weigh less and are easier to handle and laying in making walls and floors, both in new builds and renovations.

**Le soluzioni in gres porcellanato con uno spessore di 7 mm sono espressione delle più innovative tecnologie produttive applicate al settore dei rivestimenti ceramici. Lo spessore contenuto mantiene intatte le straordinarie caratteristiche di resistenza, igiene e manutenzione del materiale a fronte di prodotti dal peso ridotto, più facili da posare, per realizzare pareti e pavimenti in nuovi interventi e ristrutturazioni.**

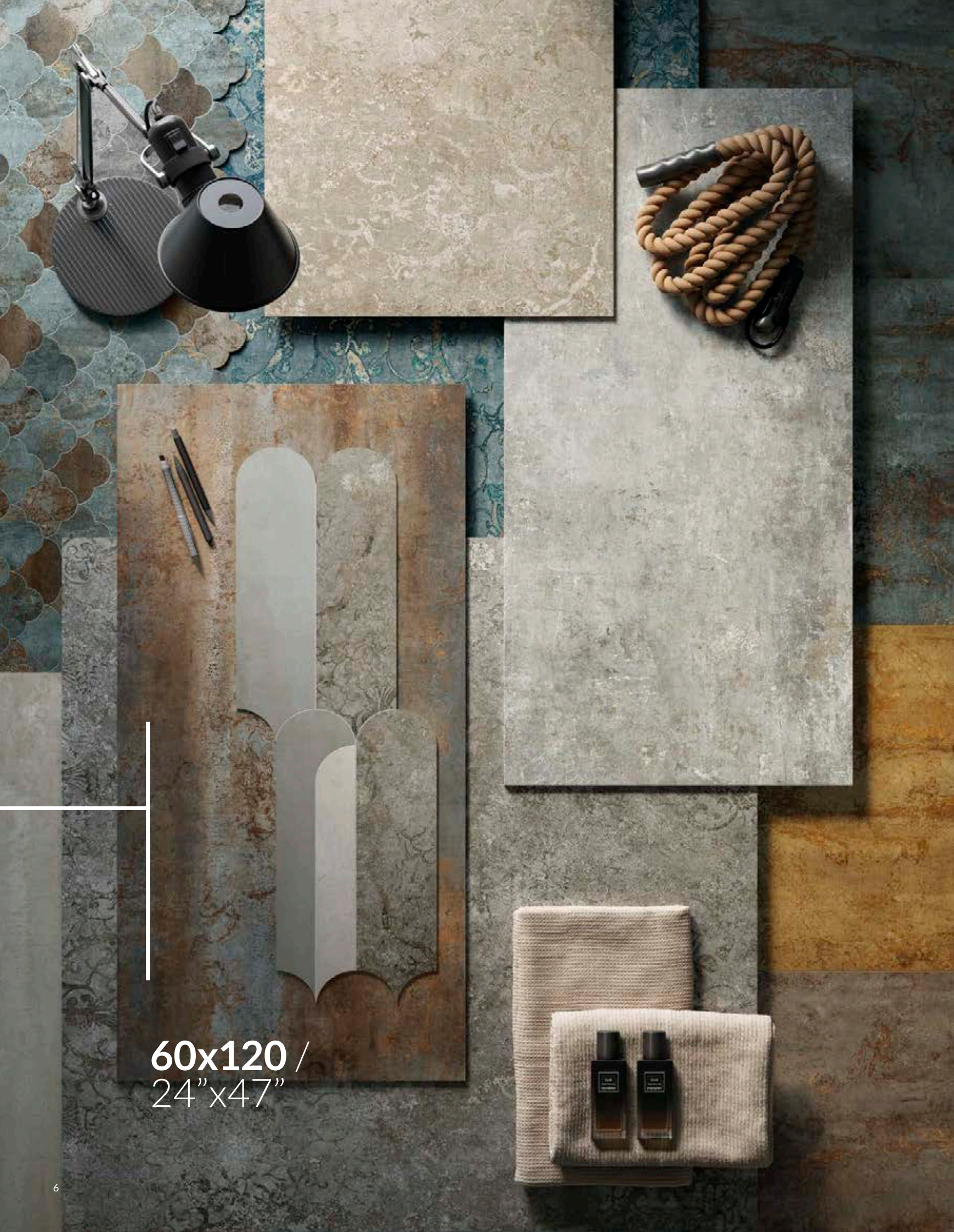
## NATURAL SURFACE SUPERFICIE NATURALE

The natural finish captures the original essence of the material and underlines its aesthetic qualities, such as colouring, veins and textures. Resistant and versatile, the natural surface finish is recommended for use on floors and walls in residential, commercial and public medium traffic areas.

**La finitura naturale permette di cogliere l'originale essenza materica del prodotto esaltandone le qualità estetiche, incluse le colorazioni e le eventuali venature e texture. Resistente e versatile, questa superficie è indicata per la posa a pavimento e a parete negli spazi residenziali, commerciali e pubblici a medio traffico.**







60x120 /  
24"x47"





---

# BOLD

MATERIAL FOR  
CREATIVITY

**60x120 /**  
**24"x47"**

FINE PORCELAIN STONEWARE  
GRES FINE PORCELLANATO

SURFACE  
SUPERFICIE

Natural  
Naturale

THICKNESS  
SPESSORE

7 mm

EDGE  
BORDO

Rectified  
Rettificato

SIZES  
FORMATI

120x120 \* 47"x47"  
60x120 24"x47"

\* Concert,  
Concert Beige



WATCH THE VIDEO

★★★★★  
**NAXOS**<sup>®</sup>  
FINCIBEC GROUP

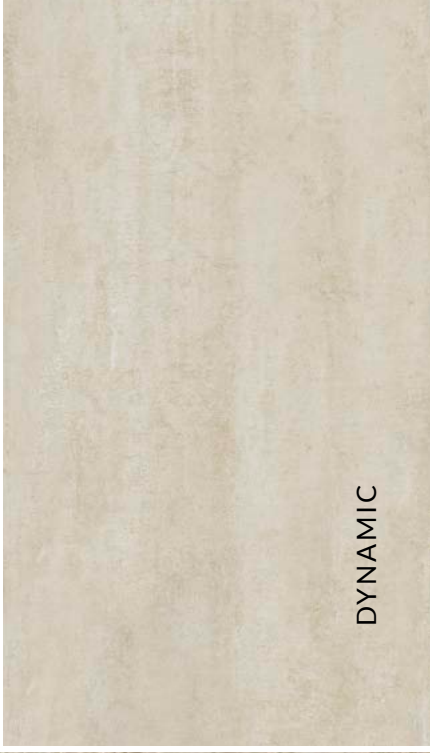




SILVERY



HERO



DYNAMIC



FIRE



CONCERT



CONCERT BEIGE



IDOL



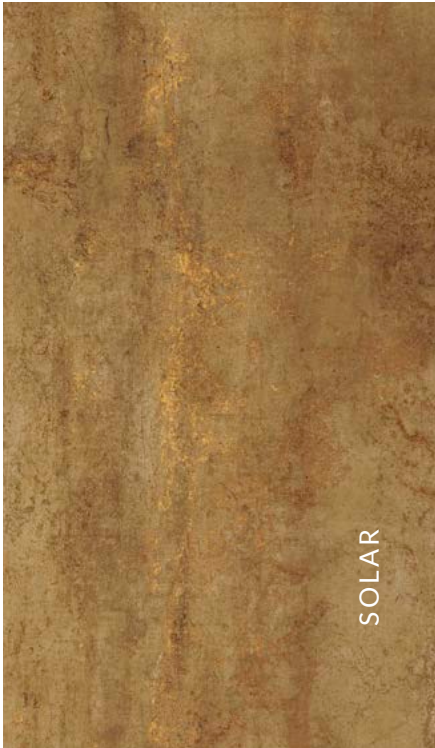
SUPREME



BEAT



LIVELY



SOLAR





SUPREME

# BOLD

BEDROOM

**60x120 / 24"x47"**

HERO







SETTING REALIZED WITH  
AMBIENTE REALIZZATO CON

WALL  
Supreme 60x120 cm nat. rect. - 24"x47"

FLOOR  
Hero 60x120 cm nat. rect. - 24"x47"









SETTING REALIZED WITH  
AMBIENTE REALIZZATO CON

WALL

Supreme 60x120 cm nat. rect. - 24"x47"

Hero 60x120 cm nat. rect. - 24"x47"

Fascia Symphony Mix

60x120 cm nat. rect. - 24"x47"

Modulo Arabesque Supreme 35x23 cm nat. rect. - 14"x9"

FLOOR

Hero 60x120 cm nat. rect. - 24"x47"









---

★★★★★  
**NAXOS**<sup>®</sup>  
FINCIBEC GROUP

SETTING REALIZED WITH  
AMBIENTE REALIZZATO CON

WALL  
Fascia Symphony Mix  
60x120 cm nat. rect. - 24"x47"

FLOOR  
Hero 60x120 cm nat. rect. - 24"x47"



# BOLD

OPEN SPACE

60x120 / 24"x47"

HERO

IDOL

CONCERT





SETTING REALIZED WITH  
AMBIENTE REALIZZATO CON

WALL  
Idol 60x120 cm nat. rect. - 24"x47"

FLOOR  
Concert 60x120 cm nat. rect. - 24"x47"









SETTING REALIZED WITH  
AMBIENTE REALIZZATO CON

WALL  
Hero 60x120 cm nat. rect. - 24"x47"  
Idol 60x120 cm nat. rect. - 24"x47"  
Modulo Suite Grey 29x50 cm nat. rect. - 11"x20"  
FLOOR  
Concert 60x120 cm nat. rect. - 24"x47"



★★★★★  
**NAXOS**  
FINCIBEC GROUP

SETTING REALIZED WITH  
AMBIENTE REALIZZATO CON

WALL

Hero 60x120 cm nat. rect. - 24"x47"

Modulo Suite Grey 29x50 cm nat. rect. - 11"x20"

FLOOR

Concert 60x120 cm nat. rect. - 24"x47"











SOLAR



LIVELY

**BOLD**

WINE BAR

**60x120 / 24"x47"**





SETTING REALIZED WITH  
AMBIENTE REALIZZATO CON

WALL

Lively 60x120 cm nat. rect. - 24"x47"

Solar 60x120 cm nat. rect. - 24"x47"

Modulo Arabesque Lively 35x23 cm nat. rect. - 14"x9"

FLOOR

Chestnut 20x120 cm nat. rect. - 8"x47"









SETTING REALIZED WITH  
AMBIENTE REALIZZATO CON

WALL

Lively 60x120 cm nat. rect. - 24"x47"

Solar 60x120 cm nat. rect. - 24"x47"

Modulo Arabesque Lively 35x23 cm nat. rect. - 14"x9"

FLOOR

Chestnut 20x120 cm nat. rect. - 8"x47"









★★★★★  
**NAXOS**<sup>®</sup>  
FINCIBEC GROUP

SETTING REALIZED WITH  
AMBIENTE REALIZZATO CON

WALL  
Lively 60x120 cm nat. rect. - 24"x47"

FLOOR  
Chestnut 20x120 cm nat. rect. - 8"x47"

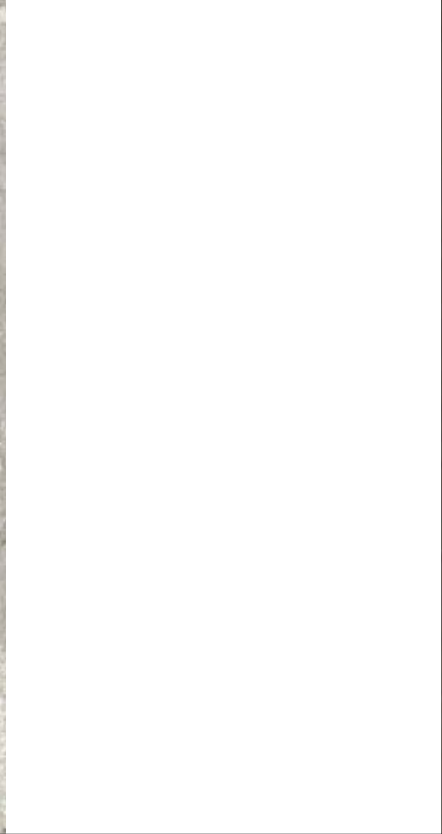




SILVERY



FIRE



CONCERT

# **BOLD**

BATHROOM

**60x120 / 24"x47"**





SETTING REALIZED WITH  
AMBIENTE REALIZZATO CON

WALL  
Silvery 60x120 cm nat. rect. - 24"x47"









SETTING REALIZED WITH  
AMBIENTE REALIZZATO CON

WALL

Fire 60x120 cm nat. rect. - 24"x47"

Silvery 60x120 cm nat. rect. - 24"x47"

Concert 60x120 cm nat. rect. - 24"x47"

Modulo Arabesque Concert 35x23 cm nat. rect. - 14"x9"

FLOOR

Concert 60x120 cm nat. rect. - 24"x47"



★ ★ ★ ★ ★  
**NAXOS**  
FINCIBEC GROUP

SETTING REALIZED WITH  
AMBIENTE REALIZZATO CON

WALL

Fire 60x120 cm nat. rect. - 24"x47"

Concert 60x120 cm nat. rect. - 24"x47"

Modulo Arabesque Concert 35x23 cm nat. rect. - 14"x9"











DYNAMIC

# BOLD

LIVING

**60x120 / 24"x47"**



BEAT





SETTING REALIZED WITH  
AMBIENTE REALIZZATO CON

WALL  
Beat 60x120 cm nat. rect. - 24"x47"









SETTING REALIZED WITH  
AMBIENTE REALIZZATO CON

WALL

Beat 60x120 cm nat. rect. - 24"x47"

Dynamic 60x120 cm nat. rect. - 24"x47"

FLOOR

Dynamic 60x120 cm nat. rect. - 24"x47"





SETTING REALIZED WITH  
AMBIENTE REALIZZATO CON

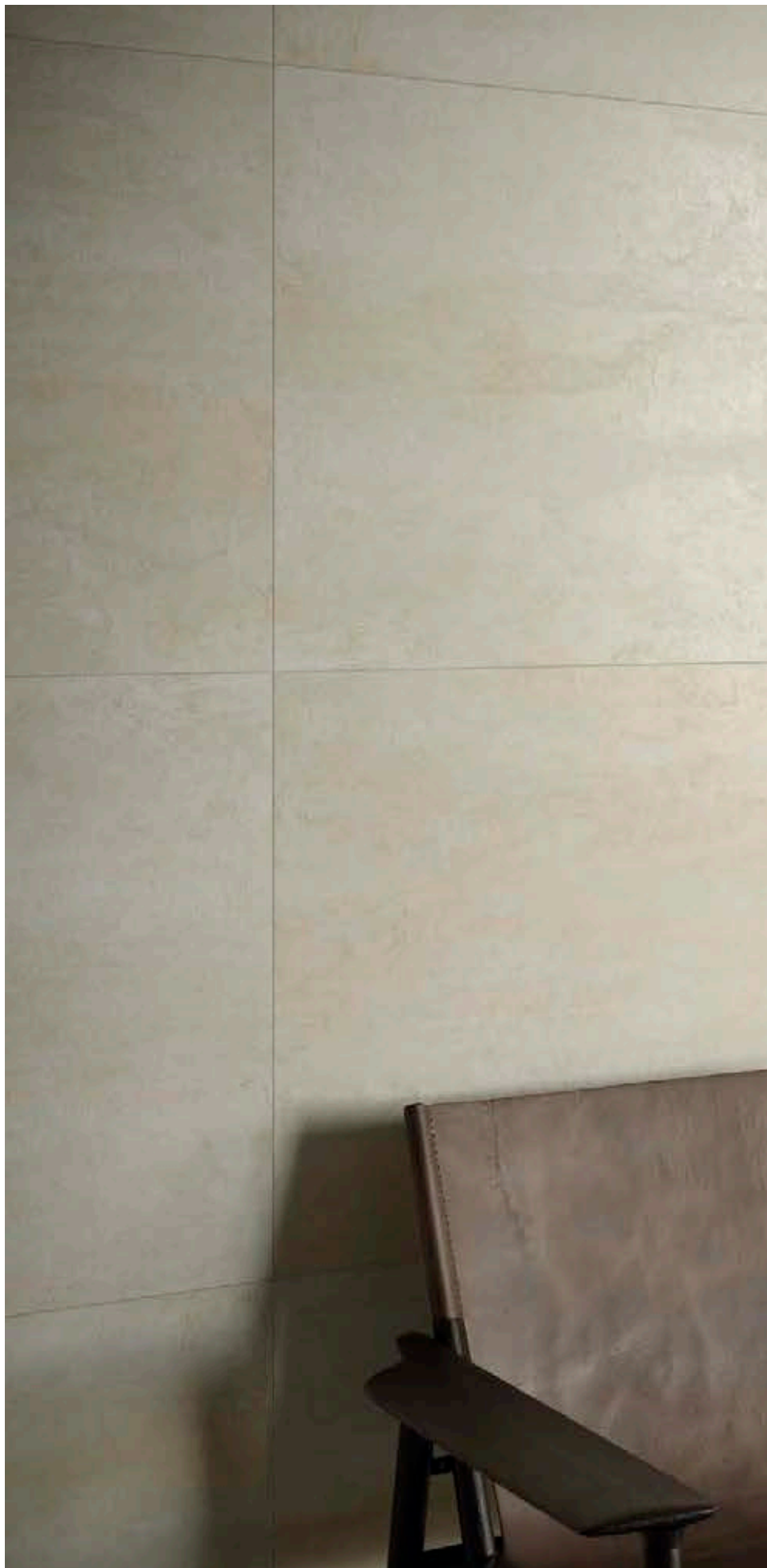
WALL

Beat 60x120 cm nat. rect. - 24"x47"

Dynamic 60x120 cm nat. rect. - 24"x47"

FLOOR

Dynamic 60x120 cm nat. rect. - 24"x47"










# BOLD

SHOP

60x120 / 24"x47"



DYNAMIC

CONCERT BEIGE





SETTING REALIZED WITH  
AMBIENTE REALIZZATO CON

WALL  
Modulo Suite Beige 29x50 cm nat. rect. - 11"x20"

FLOOR  
Concert Beige 120x120 cm nat. rect. - 47"x47"









SETTING REALIZED WITH  
AMBIENTE REALIZZATO CON

WALL

Dynamic 60x120 cm nat. rect. - 24"x47"

Concert Beige 60x120 cm nat. rect. - 24"x47"

Modulo Suite Beige 29x50 cm nat. rect. - 11"x20"

FLOOR

Concert Beige 120x120 cm nat. rect. - 47"x47"



---

★ ★ ★ ★ ★  
**NAXOS**  
FINCIBEC GROUP

SETTING REALIZED WITH  
AMBIENTE REALIZZATO CON

WALL  
Concert Beige 60x120 cm nat. rect. - 24"x47"

FLOOR  
Concert Beige 120x120 cm nat. rect. - 47"x47"









# BOLD

MASTER BATHROOM

**60x120 / 24"x47"**

DYNAMIC

CONCERT BEIGE





SETTING REALIZED WITH  
AMBIENTE REALIZZATO CON

WALL  
Dynamic 60x120 cm nat. rect. - 24"x47"  
Lastra Symphony 120x260 cm nat. rect. - 47"x102"

FLOOR  
Concert Beige 120x120 cm nat. rect. - 47"x47"









SETTING REALIZED WITH  
AMBIENTE REALIZZATO CON

WALL

Dynamic 60x120 cm nat. rect. - 24"x47"

Lastra Symphony 120x260 cm nat. rect. - 47"x102"

Modulo Arabesque Supreme 35x23 cm nat. rect. - 14"x9"

FLOOR

Concert Beige 120x120 cm nat. rect. - 47"x47"



---

★★★★★  
**NAXOS**<sup>®</sup>  
FINCIBEC GROUP

SETTING REALIZED WITH  
AMBIENTE REALIZZATO CON

WALL  
Modulo Arabesque Supreme 35x23 cm nat. rect. - 14"x9"







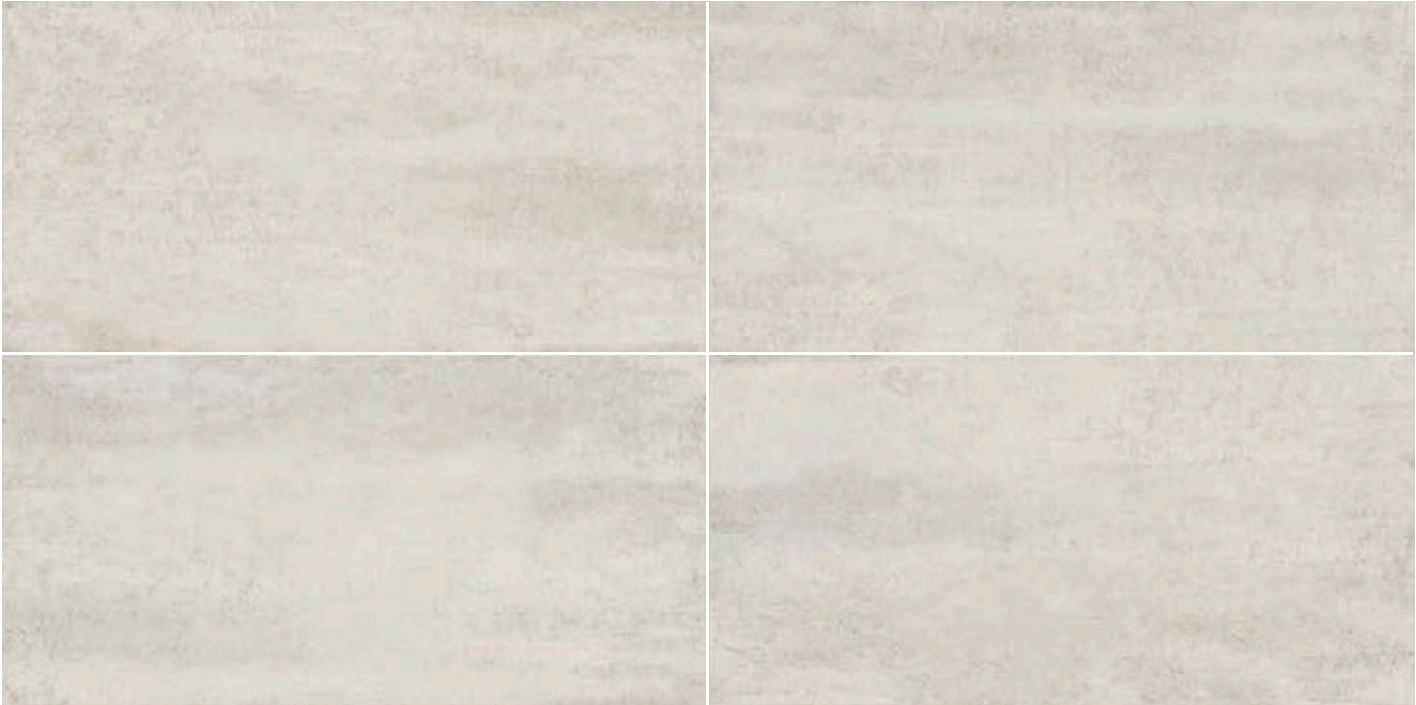


# BOLD

⊕ 7 mm

FINE PORCELAIN STONEWARE RECTIFIED | GRES FINE PORCELLANATO RETTIFICATO

## HERO



**133044** | HERO Natural Rectified  
60x120 cm - 24"x47"

■ 133

## IDOL



**133046** | IDOL Natural Rectified  
60x120 cm - 24"x47"

■ 133





## DYNAMIC



**133045** | DYNAMIC Natural Rectified  
60x120 cm - 24"x47"

■ 133

## FIRE



**133047** | FIRE Natural Rectified  
60x120 cm - 24"x47"

■ 133



# BOLD

7 mm

FINE PORCELAIN STONEWARE RECTIFIED | GRES FINE PORCELLANATO RETTIFICATO

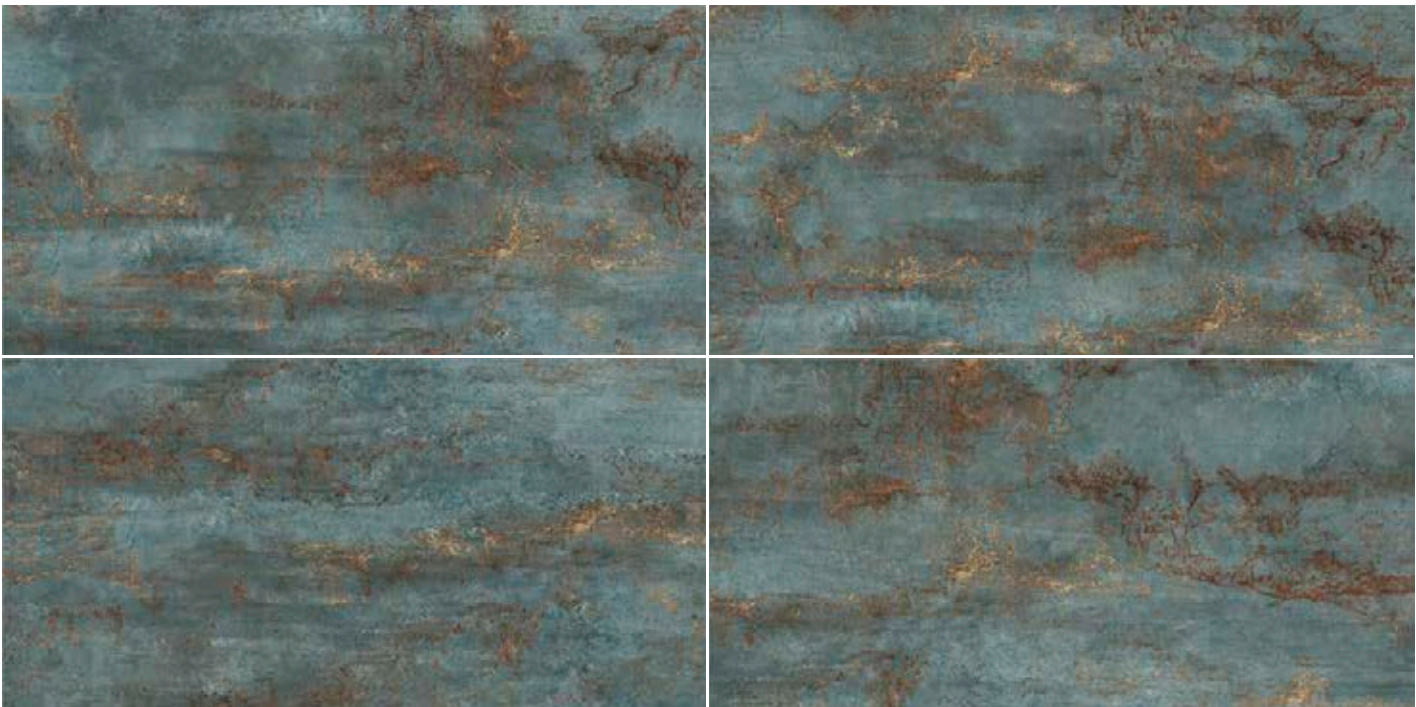
## SILVERY



**133049** | SILVERY Natural Rectified  
60x120 cm - 24"x47"

■ 133

## SUPREME



**133050** | SUPREME Natural Rectified  
60x120 cm - 24"x47"

■ 133





## SOLAR



**133452** | SOLAR Natural Rectified  
60x120 cm - 24"x47"

■ 133

## LIVELY



**133451** | LIVELY Natural Rectified  
60x120 cm - 24"x47"

■ 133



# BOLD

7 mm

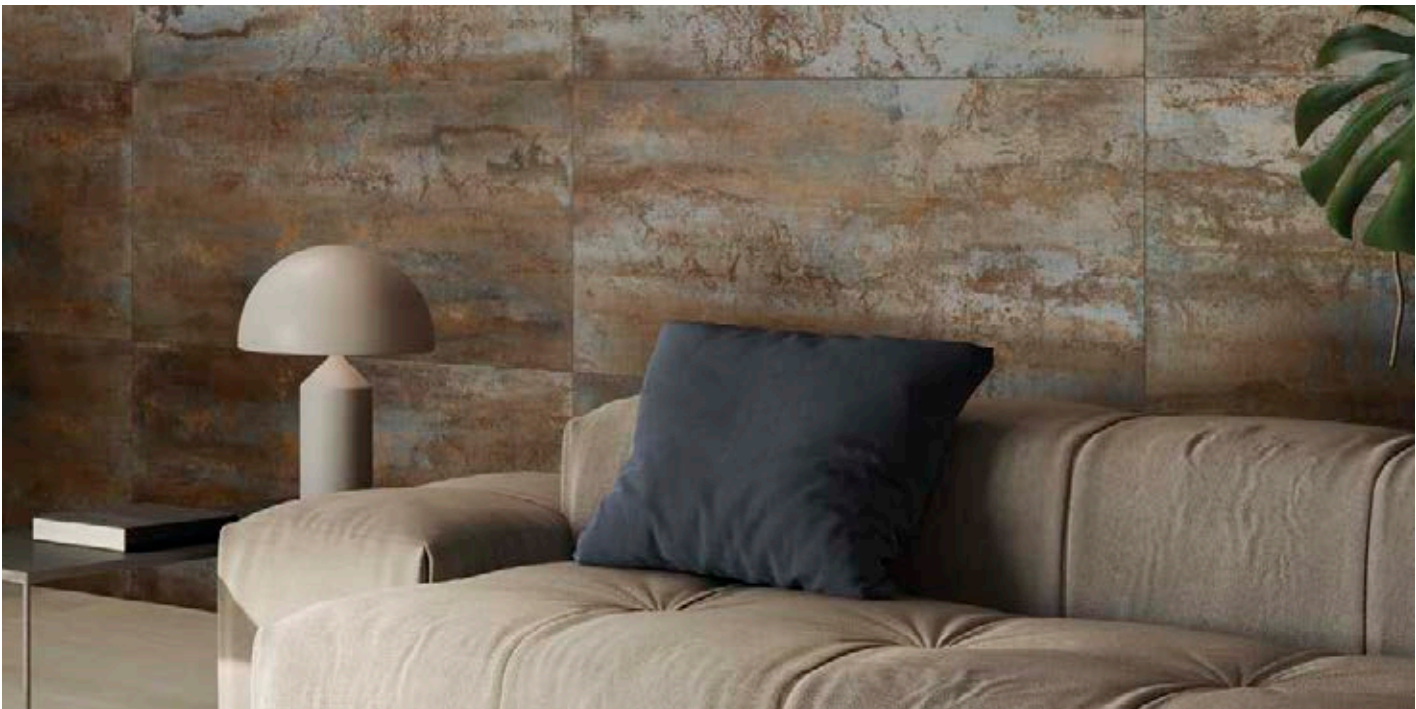
FINE PORCELAIN STONEWARE RECTIFIED | GRES FINE PORCELLANATO RETTIFICATO

## BEAT



**133051** | BEAT Natural Rectified  
60x120 cm - 24"x47"

■ 133







## CONCERT BEIGE



**133571** | CONCERT BEIGE Natural Rectified  
120x120 cm -47"x47"  
■ 157



**133052** | CONCERT BEIGE Natural Rectified  
60x120 cm -24"x47"  
■ 133

## CONCERT



**133570** | CONCERT Natural Rectified  
120x120 cm -47"x47"  
■ 157



**133048** | CONCERT Natural Rectified  
60x120 cm -24"x47"  
■ 133



# BOLD

7 mm

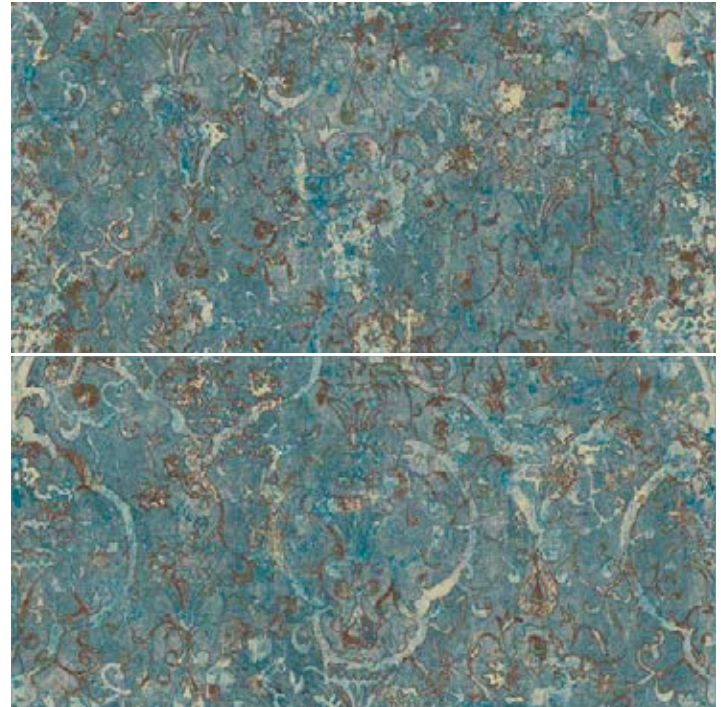
FINE PORCELAIN STONEWARE RECTIFIED | GRES FINE PORCELLANATO RETTIFICATO

DECORS | DECORI



**133497** | Lastra SYMPHONY Natural Rectified  
120x260 cm - 47"x102"

● 649



**134858** | Fascia SYMPHONY Mix Natural Rectified  
60x120 cm - 24"x47"

● 353

MOSAICS | MOSAICI



**134101** | MODULO  
SUITE BEIGE A+B  
Natural Rectified  
29x50 cm - 11"x20"

● 53

**134102** | MODULO  
SUITE GREYA+B  
Natural Rectified  
29x50 cm - 11"x20"

● 53



MOSAICS | MOSAICI  



**133572** | MODULO ARABESQUE SUPREME  
 Natural Rectified  
 35x23 cm - 14"x9"  
 ● 53



**133573** | MODULO ARABESQUE CONCERT  
 Natural Rectified  
 35x23 cm - 14"x9"  
 ● 53



**134100** | MODULO ARABESQUE LIVELY  
 Natural Rectified  
 35x23 cm - 14"x9"  
 ● 53



**133498** | HERO MOSAICO SU RETE  
 Natural Rectified  
 30x30 cm - 12"x12"  
 ■ 253



**133538** | DYNAMIC MOSAICO SU RETE  
 Natural Rectified  
 30x30 cm - 12"x12"  
 ■ 253



**133539** | IDOL MOSAICO SU RETE  
 Natural Rectified  
 30x30 cm - 12"x12"  
 ■ 253

COORDINATED FLOORS | PAVIMENTI COORDINATI



**131261** | CHESTNUT Natural Rectified  
 20x120 cm - 8"x47"  
 ■ 87



**128978** | NEST Natural Rectified  
 20x120 cm - 8"x47"  
 ■ 87



**131297** | NATURE Natural Rectified  
 20x120 cm - 8"x47"  
 ■ 87



**128980** | LARIX Natural Rectified  
 20x120 cm - 8"x47"  
 ■ 87

WEIGHTS AND PACKAGING | PESI E IMBALLI

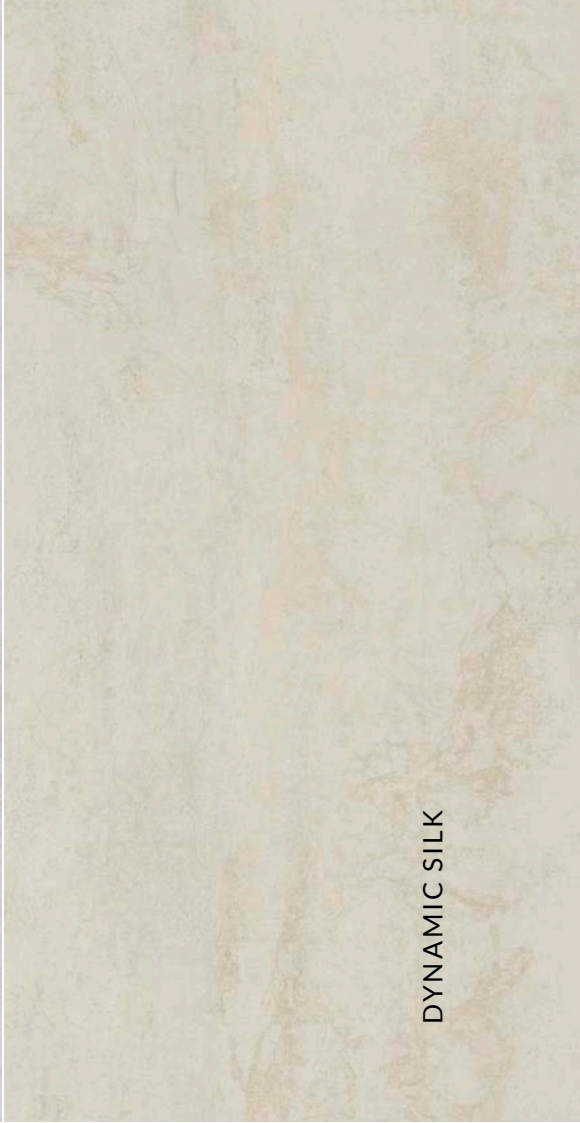
	120x120	60x120	FASCIA MIX 60x120	LASTRA 120x260	MOD. ARABESQUE 35x23	MOD. SUITE 29x50	MOS. 30x30	20x120
<b>Pc.</b>	2	3	1	1	5	4	11	4
<b>M²</b>	2,88	2,16	0,72	3,12	0,40	0,58	1,00	0,96
<b>Kg</b>	50,2	35,67	13,15	53	8	6,5	16,3	21,6

	120x120	60x120	FASCIA MIX 60x120	LASTRA 120x260 CASSA	MODULO ARABESQUE 35x23	MODULO SUITE 29x50	MOS. 30x30	20x120
<b>Pc.</b>	24	30	-	18	-	-	-	32
<b>M²</b>	69,12	64,8	-	56,16	-	-	-	30,72
<b>Kg</b>	1205	1070	-	954	-	-	-	691,2

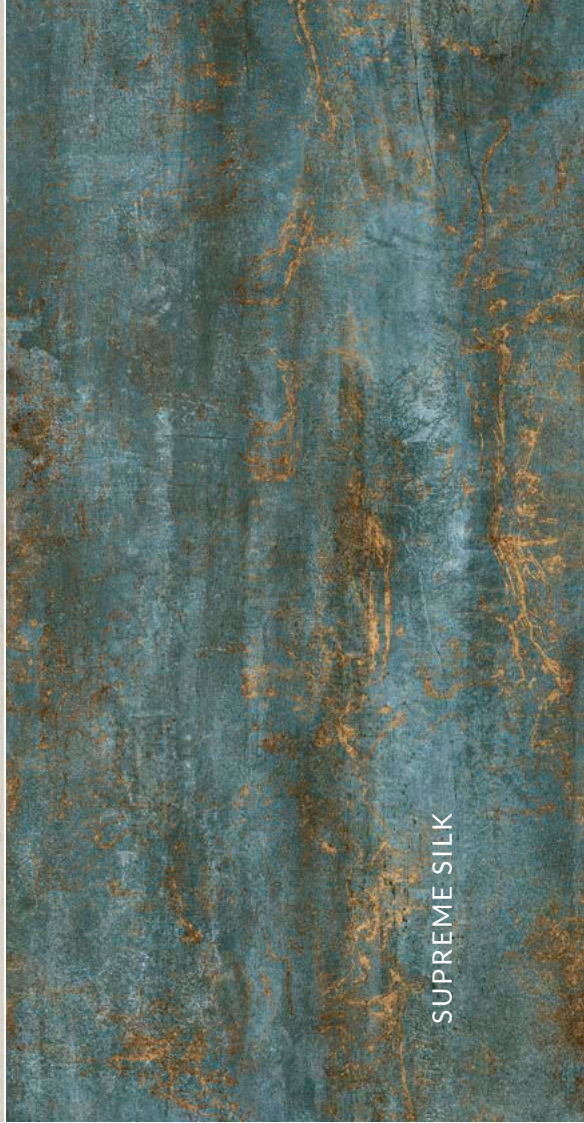




HERO SILK



DYNAMIC SILK



SUPREME SILK



BEAT SILK



FAIRY BEIGE



FAIRY GREY



---

# BOLD

MATERIAL FOR  
CREATIVITY

**30x60 /**  
**12"x24"**

FINE PORCELAIN STONEWARE  
GRES FINE PORCELLANATO

SURFACE  
SUPERFICIE

Natural  
Naturale

THICKNESS  
SPESSORE

**7 mm**

EDGE  
BORDO

Rectified  
Rettificato

SIZES  
FORMATI

**30x60 12"x24"**  
**60x60 24"x24"**

★★★★★  
**NAXOS**<sup>®</sup>  
FINCIBEC GROUP





**BOLD**

BATHROOM

**30x60 / 12"x24"**

SETTING REALIZED WITH  
AMBIENTE REALIZZATO CON

WALL  
Hero Silk 30x60 cm nat. rect. - 12"x24"  
Fascia Magic Mix 30x60 cm nat. rect. - 12"x24"





SETTING REALIZED WITH  
AMBIENTE REALIZZATO CON

WALL

Hero Silk 30x60 cm nat. rect. - 12"x24"

Mosaico Supreme Silk 30x30 cm nat. rect. - 12"x12"

FLOOR

Chestnut 20x120 cm nat. rect. - 8"x47"









SETTING REALIZED WITH  
AMBIENTE REALIZZATO CON

WALL

Hero Silk 30x60 cm nat. rect. - 12"x24"  
Fascia Magic Mix 30x60 cm nat. rect. - 12"x24"  
Mosaico Supreme Silk 30x30 cm nat. rect. - 12"x12"

FLOOR

Chestnut 20x120 cm nat. rect. - 8"x47"





SETTING REALIZED WITH  
AMBIENTE REALIZZATO CON

WALL

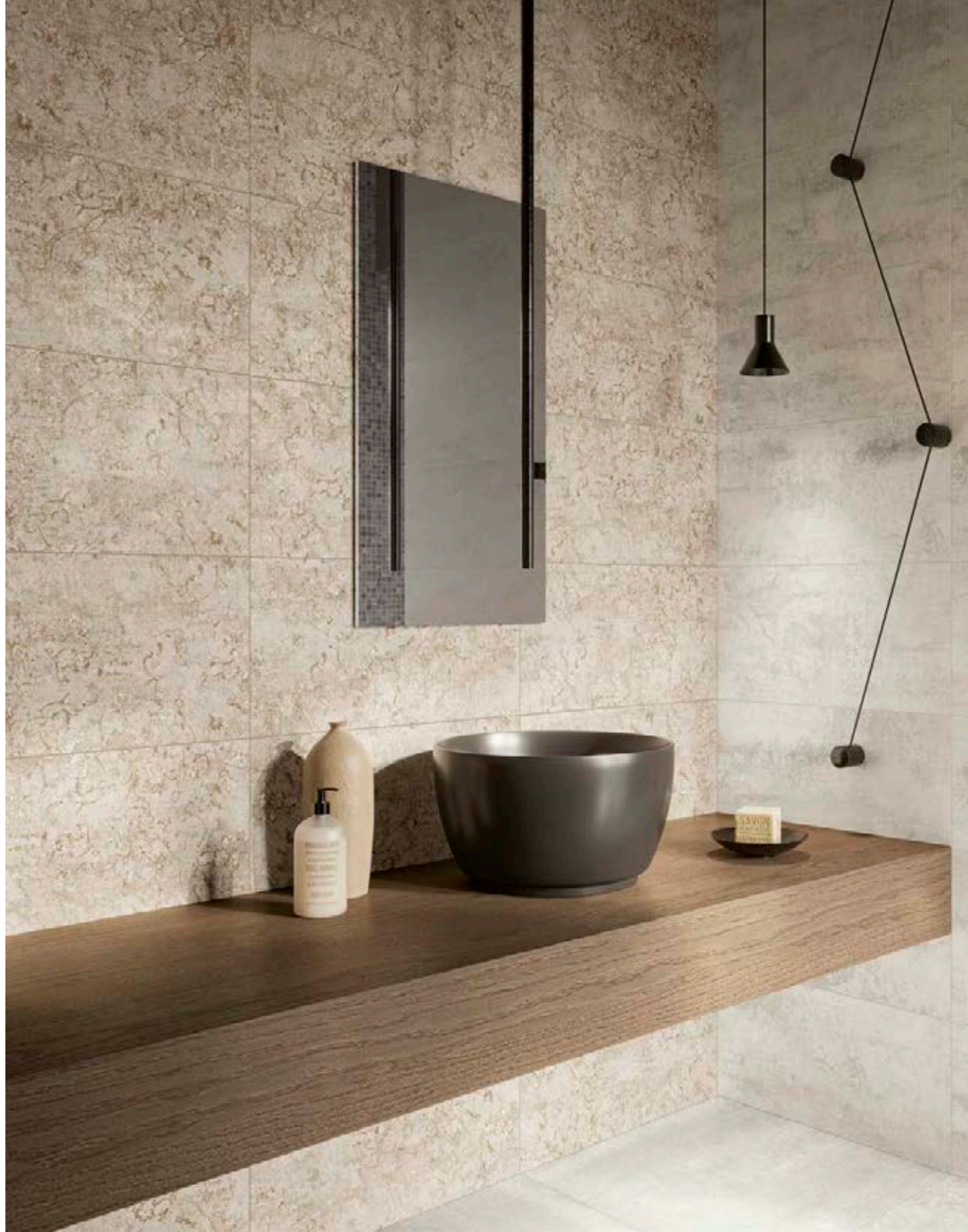
Beat Silk 30x60 cm nat. rect. - 12"x24"

Mosaico Beat Silk 30x30 cm nat. rect. - 12"x12"

FLOOR

Dynamic 60x60 cm nat. rect. - 24"x24"





**30x60 / 12"x24"**

**BOLD**

BATHROOM

SETTING REALIZED WITH  
AMBIENTE REALIZZATO CON

WALL  
Dynamic Silk 30x60 cm nat. rect. - 12"x24"  
Fairy Beige 30x60 cm nat. rect. - 12"x24"

FLOOR  
Dynamic 60x60 cm nat. rect. - 24"x24"









SETTING REALIZED WITH  
AMBIENTE REALIZZATO CON

WALL

Beat Silk 30x60 cm nat. rect. - 12"x24"  
Dynamic Silk 30x60 cm nat. rect. - 12"x24"  
Mosaico Beat Silk 30x30 cm nat. rect. - 12"x12"  
Fairy Beige 30x60 cm nat. rect. - 12"x24"

FLOOR

Dynamic 60x60 cm nat. rect. - 24"x24"





**30x60 / 12"x24"**

**BOLD**

BATHROOM

SETTING REALIZED WITH  
AMBIENTE REALIZZATO CON

WALL  
Hero Silk 30x60 cm nat. rect. - 12"x24"  
Fairy Grey 30x60 cm nat. rect. - 12"x24"





SETTING REALIZED WITH  
AMBIENTE REALIZZATO CON

WALL  
Hero Silk 30x60 cm nat. rect. - 12"x24"  
Mosaico Fairy Grey 30x30 cm nat. rect. - 12"x12"









SETTING REALIZED WITH  
AMBIENTE REALIZZATO CON

**WALL**

Hero Silk 30x60 cm nat. rect. - 12"x24"

Fairy Grey 30x60 cm nat. rect. - 12"x24"

Mosaico Fairy Grey 30x30 cm nat. rect. - 12"x12"

**FLOOR**

Idol 60x60 cm nat. rect. - 24"x24"





SETTING REALIZED WITH  
AMBIENTE REALIZZATO CON

WALL  
Supreme Silk 30x60 cm nat. rect. - 12"x24"

FLOOR  
Dynamic 60x60 cm nat. rect. - 24"x24"





**BOLD**

BATHROOM

**30x60 / 12"x24"**

SETTING REALIZED WITH  
AMBIENTE REALIZZATO CON

WALL  
Fascia Chrome Mix 30x60 cm nat. rect. - 12"x24"  
Dynamic Silk 30x60 cm nat. rect. - 12"x24"









SETTING REALIZED WITH  
AMBIENTE REALIZZATO CON

WALL

Supreme Silk 30x60 cm nat. rect. - 12"x24"

Dynamic Silk 30x60 cm nat. rect. - 12"x24"

Fascia Chrome Mix 30x60 cm nat. rect. - 12"x24"

Mosaico Fairy Beige 30x30 cm nat. rect. - 12"x12"

FLOOR

Dynamic 60x60 cm nat. rect. - 24"x24"



# BOLD

7 mm

FINE PORCELAIN STONEWARE RECTIFIED | GRES FINE PORCELLANATO RETTIFICATO



**135727** | HERO SILK Natural Rectified  
30x60 cm - 12"x24"  
■ 59



**135733** | DYNAMIC SILK Natural Rectified  
30x60 cm - 12"x24"  
■ 59



**135734** | SUPREME SILK Natural Rectified  
30x60 cm - 12"x24"  
■ 59



**135735** | BEAT SILK Natural Rectified  
30x60 cm - 12"x24"  
■ 59



**135736** | FAIRY BEIGE Natural Rectified  
30x60 cm - 12"x24"  
■ 59



**135737** | FAIRY GREY Natural Rectified  
30x60 cm - 12"x24"  
■ 59



**135393** | HERO Natural Rectified  
60x60 cm - 24"x24"  
■ 93



**135394** | DYNAMIC Natural Rectified  
60x60 cm - 24"x24"  
■ 93

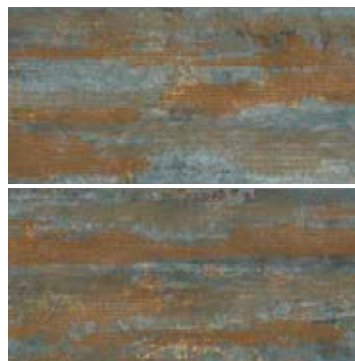


**135395** | IDOL Natural Rectified  
60x60 cm - 24"x24"  
■ 93

## DECORS | DECORI



**135739** | FASCIA MAGIC Mix  
30x60 cm - 12"x24"  
● 119



**135740** | FASCIA CHROME Mix  
30x60 cm - 12"x24"  
● 101





MOSAICS | MOSAICI



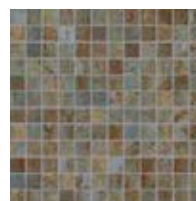
**135741** | SUPREME SILK  
 MOSAICO SU RETE  
 Natural Rectified  
 30x30 cm - 12"x12"  
 ■ 297



**135742** | FAIRY GREY  
 MOSAICO SU RETE  
 Natural Rectified  
 30x30 cm - 12"x12"  
 ■ 297



**135743** | FAIRY BEIGE  
 MOSAICO SU RETE  
 Natural Rectified  
 30x30 cm - 12"x12"  
 ■ 297



**135744** | BEAT SILK  
 MOSAICO SU RETE  
 Natural Rectified  
 30x30 cm - 12"x12"  
 ■ 297

COORDINATED FLOORS | PAVIMENTI COORDINATI



⌀ 9 mm



**131261** | CHESTNUT Natural Rectified  
 20x120 cm - 8"x47"  
 ■ 87



**128978** | NEST Natural Rectified  
 20x120 cm - 8"x47"  
 ■ 87

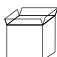



**131297** | NATURE Natural Rectified  
 20x120 cm - 8"x47"  
 ■ 87



**128980** | LARIX Natural Rectified  
 20x120 cm - 8"x47"  
 ■ 87

WEIGHTS AND PACKAGING | PESI E IMBALLI

	30x60	60x60	MOS. 30x30	20x120	FASCIA MIX 30x60
Pc.	8	4	11	4	2
M <sup>2</sup>	1,44	1,44	1	0,96	0,36
Kg	22,5	23	16,3	21,16	6,3

	30x60	60x60	20x120	MOS. 30x30	FASCIA MIX 30x60
Pc.	48	40	32	-	-
M <sup>2</sup>	69,12	57,6	30,72	-	-
Kg	1080	918,8	691,2	-	-



## USE CLASSES | CATEGORIE D'IMPIEGO

**C1** floor tiles recommended for low traffic areas  
piastrelle da pavimento consigliate per calpestio lieve

**C2** floor tiles recommended for light traffic areas  
piastrelle da pavimento consigliate per calpestio leggero

**C3** floor tiles recommended for medium-light traffic areas  
piastrelle da pavimento consigliate per calpestio medio leggero

**C4** floor tiles recommended for medium traffic areas  
piastrelle da pavimento consigliate per calpestio medio **7 mm**

**C5** floor tiles suitable for heavy traffic  
piastrelle da pavimento consigliate per calpestio intenso **9 mm**




TILES FOR WALLS  
PIASTRELLE PER RIVESTIMENTO PARETI



TILES FOR FLOORS  
PIASTRELLE PER RIVESTIMENTO PAVIMENTI

## SLIP RESISTANCE | SCIVOLOSITÀ

	STANDARD NORMA STANDARD	NATURAL SURFACE SUPERFICIE NATURALE
	B.C.R.A. (D.M.I. n. 236 μ>0,4)	> 0,40
	ANSI A137.1 (DCOF WET >0,42)	> 0,42
	DIN EN 16165 Annex B	R9 (7 mm) R10 (9 mm)
	DIN EN 16165 Annex A	A+B (MOS. 4,7x4,7)

For specific certificates and data, contact Fincibec SPA.

Per certificati specifici, e valori puntuali, contattare Fincibec SPA.

## COLOUR VARIATIONS | VARIAZIONI CROMATICHE



V1 EVEN APPEARANCE  
ASPETTO UNIFORME



V2 LIGHT VARIATION  
LIEVE VARIAZIONE



V3 MEDIUM VARIATION  
MEDIA VARIAZIONE



V4 STRONG VARIATION  
INTENSA VARIAZIONE

It is necessary to take the tiles from several different boxes when laying them.

è indispensabile all'atto della posa, prelevare le piastrelle da più confezioni.

## NOTES | NOTE

Fincibec reserves the right to modify its products without prior notice and cannot be held liable for direct or indirect damage caused by such modifications.

I prodotti possono essere modificati da Fincibec senza preavviso, respingendo ogni responsabilità su possibili danni diretti o indiretti causati da potenziali modifiche.

Always refer to the price list in force to ensure correct information and data on codes, packaging, and weight.

Verificare sempre la correttezza delle informazioni e dei dati relativi a codici, imballaggi e pesi, consultando il listino prezzi in vigore.

The colours shades, reported on the catalogue, are indicative.

Le tonalità dei colori riportate nel catalogo sono indicative.



## DURABILITY | DURABILITÀ



### EASY MAINTENANCE FACILE DA MANTENERE

Maintains its aesthetic and functional properties unaltered over the years with ordinary cleaning.

**Mantiene inalterate nel tempo le caratteristiche estetiche e funzionali con una normale pulizia ordinaria.**



### RESISTANT TO SUNSHINE RESISTENTE AI RAGGI SOLARI

Material will not fade even in direct contact with uv rays.

**Il materiale a diretto contatto con i raggi uv non subisce alcuna alterazione dei colori.**



### RESISTANT TO CHEMICAL AGGRESSION RESISTENTE ALL'ATTACCO CHIMICO

Resistant to chemical agents and acidic/basic substances used in home.

**Resiste agli agenti chimici e agli acidi/basi di uso domestico.**



### RESISTANT TO STAINS RESISTENTE ALLE MACCHIE

Impermeable to stains and easy to clean.

**Impermeabile alle macchie e quindi facilmente pulibile.**



### IMPERMEABLE IMPERMEABILE

Fine porcelain's stoneware compact nature prevents absorption of water and moisture.

**Grazie alla sua compattezza il gres porcellanato non assorbe acqua e non teme l'umidità.**



### RESISTANT TO FROST RESISTENTE AL GELO

Fine porcelain stoneware is frostproof and can withstand even the coldest winter weather.

**Il gres porcellanato è ingelivo e in grado di resistere ai climi più rigidi.**



### RESISTANT TO TEMPERATURE EXCURSIONS RESISTENTE AGLI SBALZI TERMICI

Remains unaltered by sudden changes in temperature.

**Resiste senza alterazioni alle repentine differenze di temperature.**



### RESISTANT AND UNALTERABLE RESISTENTE E INALTERABILE

Fine porcelain stoneware can be used to cover a great variety of different surfaces in residential and commercial buildings.

**Il gres porcellanato può essere utilizzato per rivestire molteplici superfici in ambito residenziale e commerciale.**



# BOLD

## HEALTH | SALUTE



### ZERO FORMALDEHYDE ZERO FORMALDEIDE

Will not give off formaldehyde emissions.

**Non rilascia formaldeide nell'ambiente.**



### ZERO VOCS ZERO VOCS

Fine porcelain stoneware is an inert material that does not emit volatile organic compounds (VOC).

**Le piastrelle in gres porcellanato sono un materiale inerte che non emette composti organici volatili (VOC).**



### ANALLERGIC ANALLERGICO

Contains no allergens.

**Non contiene allergeni.**



### ODOURLESS INODORE

Does not give off odours indoors or outdoors.

**Non rilascia odori nell'ambiente indoor e outdoor.**



### RESISTANT TO MICROBES RESISTENTE ALLA CRESCITA MICROBICA

Fine porcelain stoneware is an inert material which inhibits growth of bacteria and fungus.

**Le piastrelle in gres porcellanato sono un materiale inerte e pertanto inibiscono la crescita di batteri e funghi.**



### EASY TO CLEAN FACILE DA PULIRE

Can be cleaned with water or ordinary cleaning products for guaranteed hygiene.

**Pulibile con acqua o detergenti comuni per una garanzia di una igiene sicura.**



## SAFETY | SICUREZZA



### FIRE-RESISTANT RESISTENTE AL FUOCO

Fine porcelain stoneware tiles are incombustible, do not burn, do not give off fumes, and do not propagate flame in case of fire.

**Le piastrelle in gres porcellanato sono incombustibili, non bruciano, non emettono fumi, ne alimentano la propagazione delle fiamme in caso di incendio.**



### NON-SLIP ANTISCIVOLO

Fine porcelain stoneware surfaces can be made with non-slip surfaces.

**Alcune superfici in gres porcellanato possono essere realizzate con un'elevata resistenza allo scivolamento.**



### UNALTERABLE UNDER THE EFFECT OF HEAT INALTERABILE AL CALORE

Fine porcelain stoneware has low thermal expansion, making it ideal for use with underfloor heating systems.

**Il gres porcellanato garantisce una ridotta espansione termica e risulta ideale per sistemi di riscaldamento a pavimento.**

## ENVIRONMENT | AMBIENTE



### ENVIRONMENTALLY SUSTAINABLE ECOSOSTENIBILE

Fine porcelain stoneware has a low environmental impact throughout its lifespan, from production to disposal.

**Il gres porcellanato ha un basso impatto ambientale dalla fase di produzione a quella di smaltimento del prodotto.**



### RECYCLING RICICLO

Fine porcelain stoneware is easily recyclable as it is a homogeneous product made of inert natural materials.

**Le piastrelle in gres porcellanato sono facilmente riciclabili in quanto prodotti omogenei, costituiti da materiali naturali inerti.**



### EFFICIENCY AND ENERGY SAVINGS EFFICIENZA E RISPARMIO ENERGETICO

Fine porcelain stoneware saves energy thanks to its thermal inertia, which reduces indoor temperature excursion.

**Il gres porcellanato favorisce il risparmio energetico grazie all'elevata inerzia termica che riduce gli sbalzi di temperatura degli ambienti.**



# CARATTERISTICHE TECNICHE / GRES FINE PORCELLANATO COLORATO IN MASSA

TECHNICAL SPECIFICATIONS / COLOURED PORCELAIN STONWARE - TECHNISCHE EIGENSCHAFTEN / DURCHGEFÄRBTES FEINSTEINZEUG  
 CARACTÉRISTIQUES TECHNIQUES / GRÈS FIN CÉRAME COLORÉ EN MASSE - CARACTERÍSTICAS TÉCNICAS /  
 GRES FINO PORCELÁNICO TEÑIDO EN MASA - ТЕХНИЧЕСКИЕ ХАРАКТЕРИСТИКИ / МЕЛКОЗЕРНИСТЫЙ КЕРАМОГАНИТ, ОКРАШЕННЫЙ В МАССЕ  
 STANDARDS : UNI EN 14411 ANNEX G - B1α / UNI EN ISO 13006 ANNEX G - B1α

CARATTERISTICHE TECNICHE TECHNICAL DATA TECHNISCHE DATEN CARACTÉRISTIQUES TECHNIQUES CARACTERÍSTICAS TÉCNICAS ТЕХНИЧЕСКИЕ ХАРАКТЕРИСТИКИ		TIPO DI PROVA STANDARD OF TEST NORME DU TEST TESTNORM TIPO DE PRUEBA ТИП ТЕСТА	VALORI PRESCRITTI DALLE NORME INTERNATIONAL STANDARDS INTERNATIONALE NORMWERTE VALEURS PREVUES PAR LES NORMES VALORES PREVISTOS POR LAS NORMAS ПРЕДУСМОТРЕННЫЕ СТАНДАРТОМ	VALORE MEDIO AVERAGE VALUE MITTELWERT VALEURS MOYEN VALOR MEDIO СРЕДНЕЕ ЗНАЧЕНИЕ			
CARATTERISTICHE DIMENSIONALI - SIZE CHARACTERISTICS MASSEIGENSCHAFTEN - DETERMINATION DES CARACTÉRISTIQUES DIMENSIONNELLES CARACTERÍSTICAS DIMENSIONALES - РАЗМЕРНЫЕ ХАРАКТЕРИСТИКИ		REQUIREMENTS FOR NOMINAL SIZE N					
		7 cm ≤ N < 15 cm		N ≥ 15 cm			
		mm	%	mm			
	LATI - SIDES - SEITEN COTES - CANTOS РАЗМЕРЫ СТОРОН	FOR NON-RECTIFIED TILES	± 0.9	± 0.6	± 2.0	<b>CONFORME</b> COMPLYING - ERFÜLLT CONFORME - CONFORME СООТВЕТСТВУЕТ	
		FOR RECTIFIED TILES	± 0.4	± 0.3	± 1.0		
	SPESORE THICKNESS - DICKE ÉPAISSEUR - ESPESOR ТОЛЩИНА	EN ISO 10545-2	± 0.5	± 5.0	± 0.5	<b>CONFORME</b> COMPLYING - ERFÜLLT CONFORME - CONFORME СООТВЕТСТВУЕТ	
	RETTILINEITÀ DEGLI SPIGOLI STRAIGHTNESS OF SIDES - GERÄDLINIGKEIT DER KANTEN RECTITUDE DES ARÊTES - RECTIDUD DE LOS CANTOS КОСОГОЛЬНОСТЬ	FOR NON-RECTIFIED TILES	± 0.8	± 0.5	± 1.5	<b>CONFORME</b> COMPLYING - ERFÜLLT CONFORME - CONFORME СООТВЕТСТВУЕТ	
		FOR RECTIFIED TILES	± 0.4	± 0.3	± 0.8		
	ORTOGONALITÀ RECTANGULARITY - RECHTWINKLIGKEIT PERPENDICULARITÉ - ORTOGONALIDAD КРИВИЗНА СТОРОН	FOR NON-RECTIFIED TILES	± 0.8	± 0.5	± 2.0	<b>CONFORME</b> COMPLYING - ERFÜLLT CONFORME - CONFORME СООТВЕТСТВУЕТ	
		FOR RECTIFIED TILES	± 0.4	± 0.3	± 1.5		
	PLANARITÀ SURFACE FLATNESS - EBENFLÄCHIGKEIT PLANEITE DE SURFACE - PLANEIDAD КРИВИЗНА ЛИЦЕВОЙ ПОВЕРХНОСТИ	CENTRE CURVATURE	FOR NON-RECTIFIED TILES	± 0.8	± 0.5	± 2.0	<b>CONFORME</b> COMPLYING - ERFÜLLT CONFORME - CONFORME СООТВЕТСТВУЕТ
			FOR RECTIFIED TILES	± 0.6	± 0.4	± 1.8	
		EDGE CURVATURE	FOR NON-RECTIFIED TILES	± 0.8	± 0.5	± 2.0	
			FOR RECTIFIED TILES	± 0.6	± 0.4	± 1.8	
	WARPAGE	FOR NON-RECTIFIED TILES	± 0.8	± 0.5	± 2.0		
		FOR RECTIFIED TILES	± 0.6	± 0.4	± 1.8		
	ASSORBIMENTO D'ACQUA WATER ABSORPTION - WASSERAUFNAHME ABSORPTION D'EAU - ABSORCIÓN DE AGUA ВОДОПОГЛОЩЕНИЕ	EN ISO 10545-3	≤ 0.5%		≤ 0.1%		
	RESISTENZA ALLA FLESSIONE FLEXION RESISTANCE - BIEGEFESTIGKEIT RESISTENCIA A LA FLEXION - RESISTENCIA A LA FLEXIÓN ПРЕДЕЛ ПРОЧНОСТИ ПРИ ИЗГИБЕ	EN ISO 10545-4	S ≥ 700 N < F 7,5 mm		<b>CONFORME</b> COMPLYING - ERFÜLLT CONFORME - CONFORME СООТВЕТСТВУЕТ		
			S ≥ 1300 N ≥ F 7,5 mm				
			R ≥ 35 N/mm²				
	RESISTENZA ALL'URTO IMPACT RESISTANCE - STOSSFESTIGKEIT RESISTANCE AUX CHOCs - RESISTENCIA A LOS GOLPES УДАРСТОЙКОСТЬ	EN ISO 10545-5	VALORE DICHIARATO DECLARED VALUE - ANGEGEBENER WERT VALEUR DÉCLARÉE - VALOR DECLARADO ЗАЯВЛЕННОЕ ЗНАЧЕНИЕ		> 0,80		
	COEFFICIENTE DI DILATAZIONE TERMICA LINEARE COEFFICIENT OF LINEAR THERMAL-EXPANSION - LINEARER WÄRMEAUSENDNUNGSKOEFFIZIENT COEFFICIENT DE DILATION THERMIQUE LINEAIRE - COEFICIENTE DE DILATACIÓN TÉRMICA LINEAL - КОЭФФИЦИЕНТ ЛИНЕЙНОГО ТЕРМИЧЕСКОГО РАСШИРЕНИЯ	EN ISO 10545-8	VALORE DICHIARATO DECLARED VALUE - ANGEGEBENER WERT VALEUR DÉCLARÉE - VALOR DECLARADO ЗАЯВЛЕННОЕ ЗНАЧЕНИЕ		$\alpha = 6,7 \times 10^{-6} / ^\circ\text{C}$		
	RESISTENZA AGLI SBALZI TERMICI RESISTANCE TO THERMAL SHOCKS - BESTÄNDIGKEIT GEGEN TEMPERATURSCHWANKUNGEN RESISTANCE AUX CHOCs THERMIQUES - RESISTENCIA A LOS CHOQUES TÉRMICOS СТОЙКОСТЬ К ПЕРЕПАДАМ ТЕМПЕРАТУРЫ	EN ISO 10545-9	TEST SUPERATO SECONDO EN ISO 10545-1 TEST PASSED ACCORDING TO - TEST BESTANDEN NACH TEXTE DÉPASSÉ SELON - PRUEBA SUPERADA SEGÚN ИСПЫТАНИЕ ПРОЙДЕНО В СООТВЕТСТВИИ С		<b>NESSUN DANNO</b> NO DAMAGE - KEIN SCHADEN AUCUN DOMMAGE - NINGUN DANO БЕЗ ПОВРЕЖДЕНИЙ		
	DILATAZIONE ALL'UMIDITÀ (IN MM/M) MOISTURE EXPANSION (IN MM/M) - FEUCHTIGKEITSBEDINGTE AUSDEHNUNG (IN MM/M) - DILATATION A L'HUMIDITÉ (EN MM/M) - DILATACIÓN CON LA HUMEDAD (EN MM/M) - ВЛАЖНОСТНОЕ РАСШИРЕНИЕ (В MM/M)	EN ISO 10545-10	VALORE DICHIARATO DECLARED VALUE - ANGEGEBENER WERT VALEUR DÉCLARÉE - VALOR DECLARADO ЗАЯВЛЕННОЕ ЗНАЧЕНИЕ		MAX 0,1 mm / m		
	RESISTENZA AL GELO FROST RESISTANCE - FROSTBESTÄNDIGKEIT - RESISTANCE AU GEL RESISTENCIA AL HIELO - МОРОЗОСТОЙКОСТЬ	EN ISO 10545-12	TEST SUPERATO SECONDO EN ISO 10545-1 TEST PASSED ACCORDING TO - TEST BESTANDEN NACH TEXTE DÉPASSÉ SELON - PRUEBA SUPERADA SEGÚN ИСПЫТАНИЕ ПРОЙДЕНО В СООТВЕТСТВИИ С		<b>NESSUN DANNO</b> NO DAMAGE - KEIN SCHADEN AUCUN DOMMAGE - NINGUN DANO БЕЗ ПОВРЕЖДЕНИЙ		
	RESISTENZA AI PRODOTTI CHIMICI USO DOMESTICO E ADDITIVI PER PISCINA RESISTANCE TO HOUSEHOLD AND SWIMMING POOL CHEMICAL PRODUCTS BESTÄNDIGKEIT GEGEN HAUSHALTSCHIMIKALIEN UND ZUSATZSTOFFE FÜR SWIMMINGPOOLS - RESISTANCE AUX PRODUITS CHIMIQUES USAGE DOMESTIQUE ET ADDITIFS POUR PISCINE - RESISTENCIA A LOS PRODUCTOS QUÍMICOS DE USO DOMÉSTICO Y ADITIVOS PARA PISCINA - СТОЙКОСТЬ К ДЕЙСТВИЮ БЫТОВЫХ ХИМИЧЕСКИХ СРЕДСТВ, ДОБАВКАМ В БАССЕЙНЫ	EN ISO 10545-13	B MIN		<b>CONFORME</b> COMPLYING - ERFÜLLT CONFORME - CONFORME СООТВЕТСТВУЕТ		
	RESISTENZA A BASSE CONCENTRAZIONI DI ACIDI E ALCALI RESISTANCE TO LOW CONCENTRATIONS OF ACIDS AND ALKALI - BESTÄNDIGKEIT BEI NIEDRIGEN KONZENTRATIONEN VON SÄUREN UND LAUGEN - RESISTANCE À BASSES CONCENTRATIONS D'ACIDES ET ALCALIS - RESISTENCIA A BAJAS CONCENTRACIONES DE ÁCIDOS Y ALCALIS - СТОЙКОСТЬ К ДЕЙСТВИЮ НИЗКИХ КОНЦЕНТРАЦИЙ КИСЛОТ И ЩЕЛОЧЕЙ	EN ISO 10545-13	VALORE DICHIARATO DECLARED VALUE - ANGEGEBENER WERT VALEUR DÉCLARÉE - VALOR DECLARADO ЗАЯВЛЕННОЕ ЗНАЧЕНИЕ		<b>CONFORME</b> COMPLYING - ERFÜLLT CONFORME - CONFORME СООТВЕТСТВУЕТ		
	RESISTENZA AD ALTE CONCENTRAZIONI DI ACIDI E ALCALI RESISTANCE TO HIGH CONCENTRATIONS OF ACIDS AND ALKALI - BESTÄNDIGKEIT BEI HOHEN KONZENTRATIONEN VON SÄUREN UND LAUGEN - RESISTANCE À HAUTES CONCENTRATIONS D'ACIDES ET ALCALIS - RESISTENCIA A ALTAS CONCENTRACIONES DE ÁCIDOS Y ALCALIS - СТОЙКОСТЬ К ДЕЙСТВИЮ ВЫСОКИХ КОНЦЕНТРАЦИЙ КИСЛОТ И ЩЕЛОЧЕЙ	EN ISO 10545-13	VALORE DICHIARATO DECLARED VALUE - ANGEGEBENER WERT VALEUR DÉCLARÉE - VALOR DECLARADO ЗАЯВЛЕННОЕ ЗНАЧЕНИЕ		<b>CONFORME</b> COMPLYING - ERFÜLLT CONFORME - CONFORME СООТВЕТСТВУЕТ		
	RESISTENZA ALLE MACCHIE RESISTANCE TO STAINS - FLECKENBESTÄNDIGKEIT RESISTANCE AUX TACHES - RESISTENCIA A LAS MANCHAS УСТОЙЧИВОСТЬ К ПЯТНООБРАЗОВАНИЮ	EN ISO 10545-14	VALORE DICHIARATO DECLARED VALUE - ANGEGEBENER WERT VALEUR DÉCLARÉE - VALOR DECLARADO ЗАЯВЛЕННОЕ ЗНАЧЕНИЕ		<b>CONFORME</b> COMPLYING - ERFÜLLT CONFORME - CONFORME СООТВЕТСТВУЕТ		
	CESSIONE DI PIOMBO E CADMIO LEAD AND CADMIUM DISCHARGE - ABGABE VON BLEI UND CADMIUM PERTE DE PLOMB ET CADMIUM - CESIÓN DE PLOMO Y CADMIO ВЫДЕЛЕНИЕ СВИНЦА И КАДМИЯ	EN ISO 10545-15	VALORE DICHIARATO DECLARED VALUE - ANGEGEBENER WERT VALEUR DÉCLARÉE - VALOR DECLARADO ЗАЯВЛЕННОЕ ЗНАЧЕНИЕ		< AL LIMITE DI RILEVAMENTO < THAN INSTRUMENT LIMIT < UNMESSBARES WERT < LIMITE DE L'INSTRUMENT < LIMITE DEL INSTRUMENTO <НА ПРЕДЕЛЕ ОПРЕДЕЛИМОСТИ		

PER I CERTIFICATI SPECIFICI, E VALORI PUNTUALI, CONTATTARE FINCIBEC SPA - FOR SPECIFIC CERTIFICATES AND DATA, CONTACT FINCIBEC S.P.A. - FÜR SPEZIELLE ZERTIFIKATE UND PUNKTWERTE, FINCIBEC S.P.A. KONTAKTIEREN - POUR  
 LES CERTIFICATS SPÉCIFIQUES ET LES VALEURS PONCTUELLES, CONTACTER FINCIBEC S.P.A. - PARA LOS CERTIFICADOS ESPECÍFICOS Y LOS VALORES CONCRETOS, CONTACTE CON FINCIBEC S.P.A. - ВО ВОПРОСАХ СПЕЦИАЛЬНЫХ  
 СЕРТИФИКАТОВ И ПОКАЗАТЕЛЕЙ СВЯЖИТЕСЬ С FINCIBEC SPA.

ESCLUSO PEZZI SPECIALI ED ELEMENTI DECORATIVI  
 WITH THE EXCEPTION OF SPECIAL PIECES AND DECORS - A L'EXCEPTION DE PIÈCES SPÉCIALES ET ÉLÉMENTS DÉCORATIFS - AUSSCHLIEßLICH FORMSTÜCKE UND DEKORTEILE - EXCLUIDO PIEZAS ESPECIALES Y ELEMENTOS DECORATIVOS



★★★★★  
**NAXOS**<sup>®</sup>  
C E R A M I C H E  
F I N C I B E C G R O U P

**BOLD**

MATERIAL FOR CREATIVITY

FINE PORCELAIN STONEWARE RECTIFIED  
GRES FINE PORCELLANATO RETTIFICATO





**NAXOS**

Strada Statale 569, 169  
41014 - Solignano (Mo) Italy

Tel. +39 059 748811  
Fax +39 059 797376

info@naxos-ceramica.it  
www.naxos-ceramica.it

**FINCIBEC S.p.A.**

Sede legale: Via Valle d'Aosta, 47  
41049 Sassuolo (Mo) Italy  
Gruppo Fire S.R.L.

**FINCIBEC USA INC.**

420 Columbus Avenue  
Valhalla N.Y. 10595 USA  
info@fincibecusa.com



Fincibec S.p.A è socio di:

