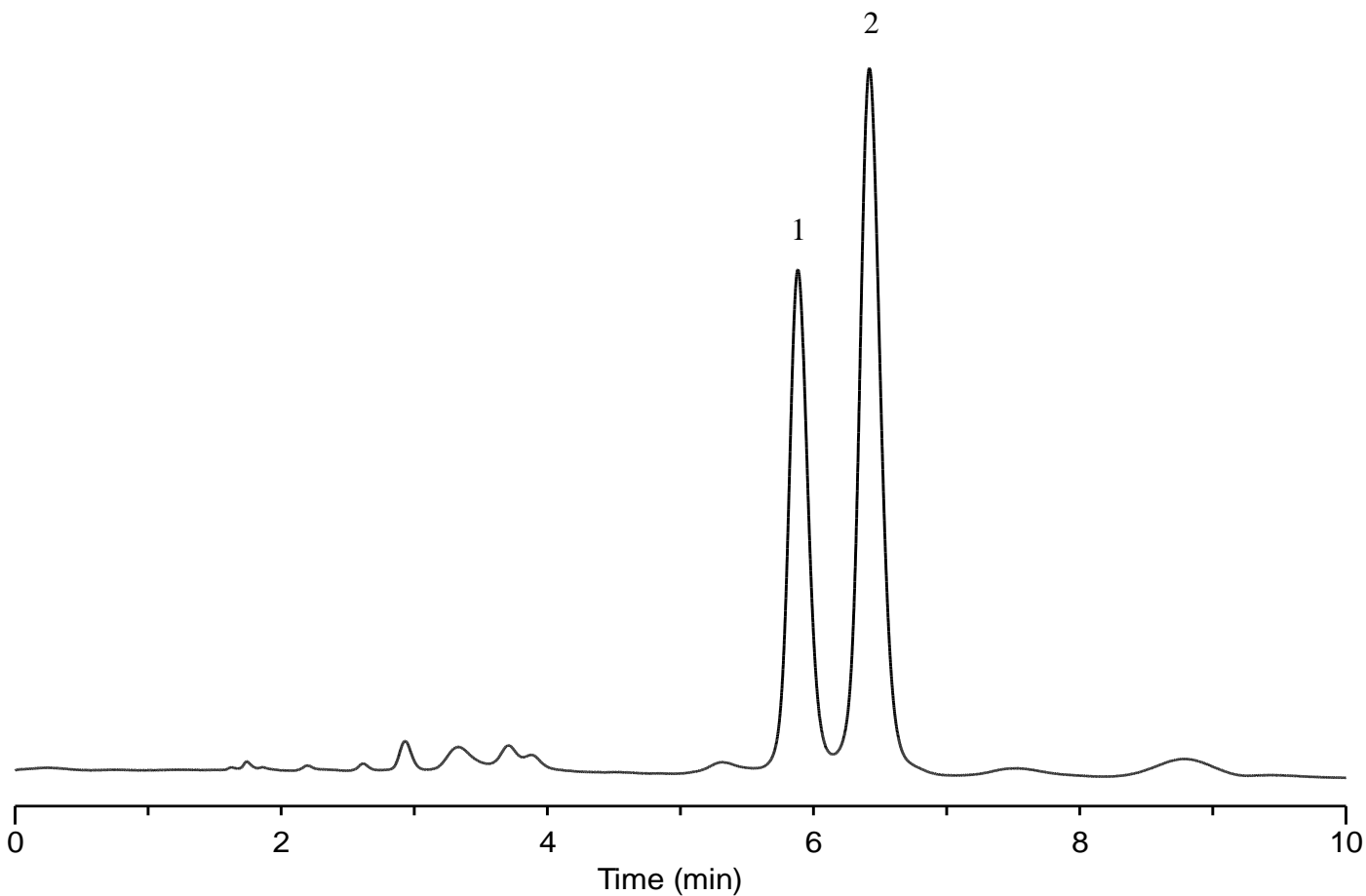


# InertSearch™ for LC

Inertsil™ Applications

## Analysis of Citral

Data No. LB608-0806



### Conditions

**Column** : InertSustain Cyano (5  $\mu$  m, 150 x 4.6 mm I.D.)

**Column Cat. No.** : 5020-89276

**Eluent** : A) CH<sub>3</sub>OH  
B) 0.1% H<sub>3</sub>PO<sub>4</sub> in H<sub>2</sub>O  
A/B = 40/60, v/v

**Flow rate** : 1.0 mL/min

**Col. Temp.** : 40 °C

**Detection** : UV 210 nm

**Injection Vol.** : 1  $\mu$  L

**Sample** : Standard

### Analyte:

1. Neral (*cis*-Citral) 1000 mg/L  
2. Geranial (*trans*-Citral) 1000 mg/L